

Alaska Department of Transportation & Public Facilities

Functional Classification Update

Michael Baker International

March 27, 2025

Project Team



Extended Project Team

Local Metropolitan Planning Organizations (MPOs)



**Federal Highway
Administration
Alaska Division**



Project consultant

**Michael Baker
INTERNATIONAL**



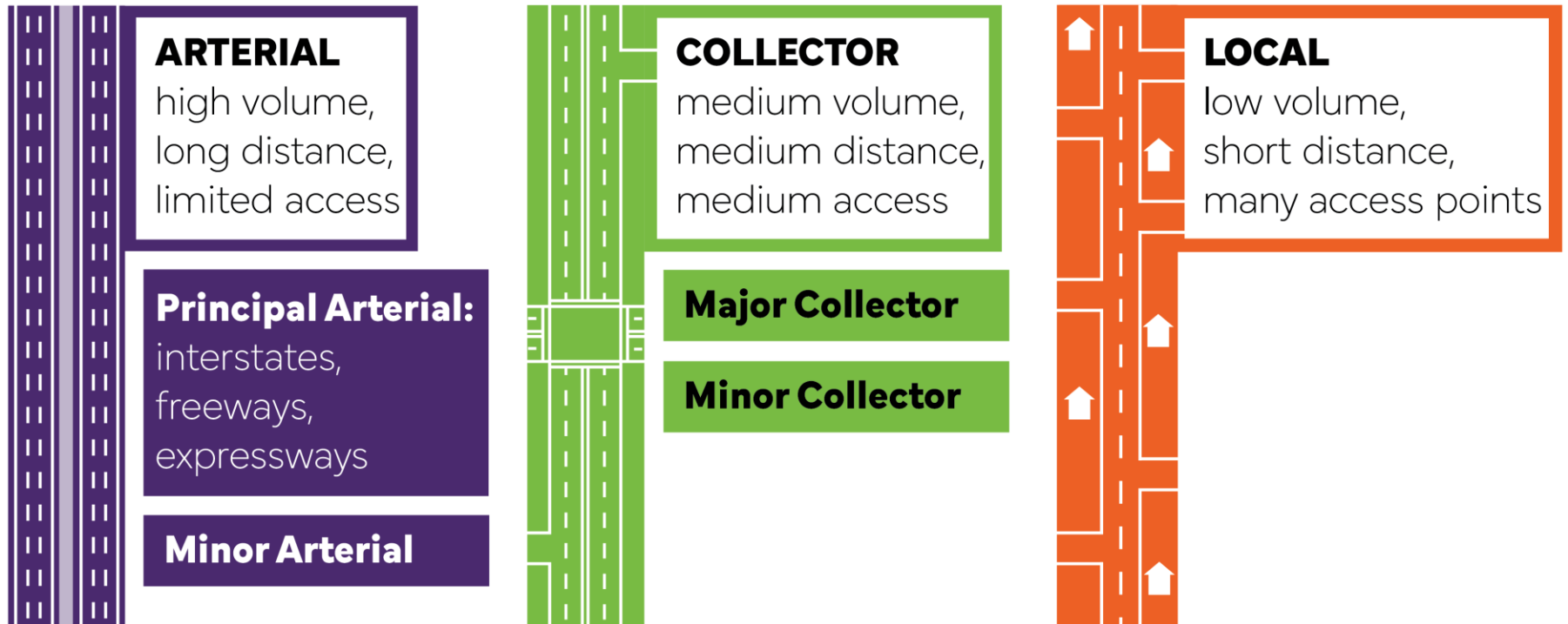
Why are we doing this project?

- FHWA requires all public roads to be reviewed and classified ***every 10 years***
- Alaska's last classification was in ***2013***



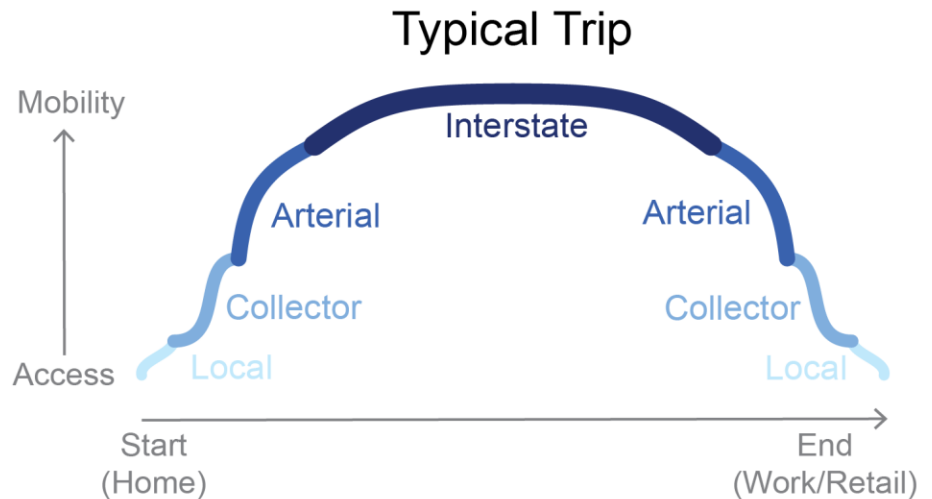
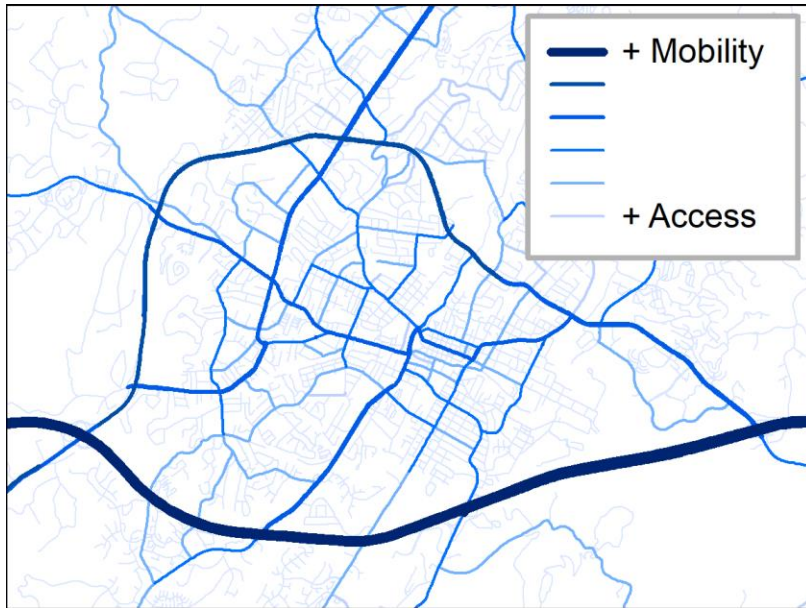
What is functional classification?

A way of categorizing public roads based on *how they are used*

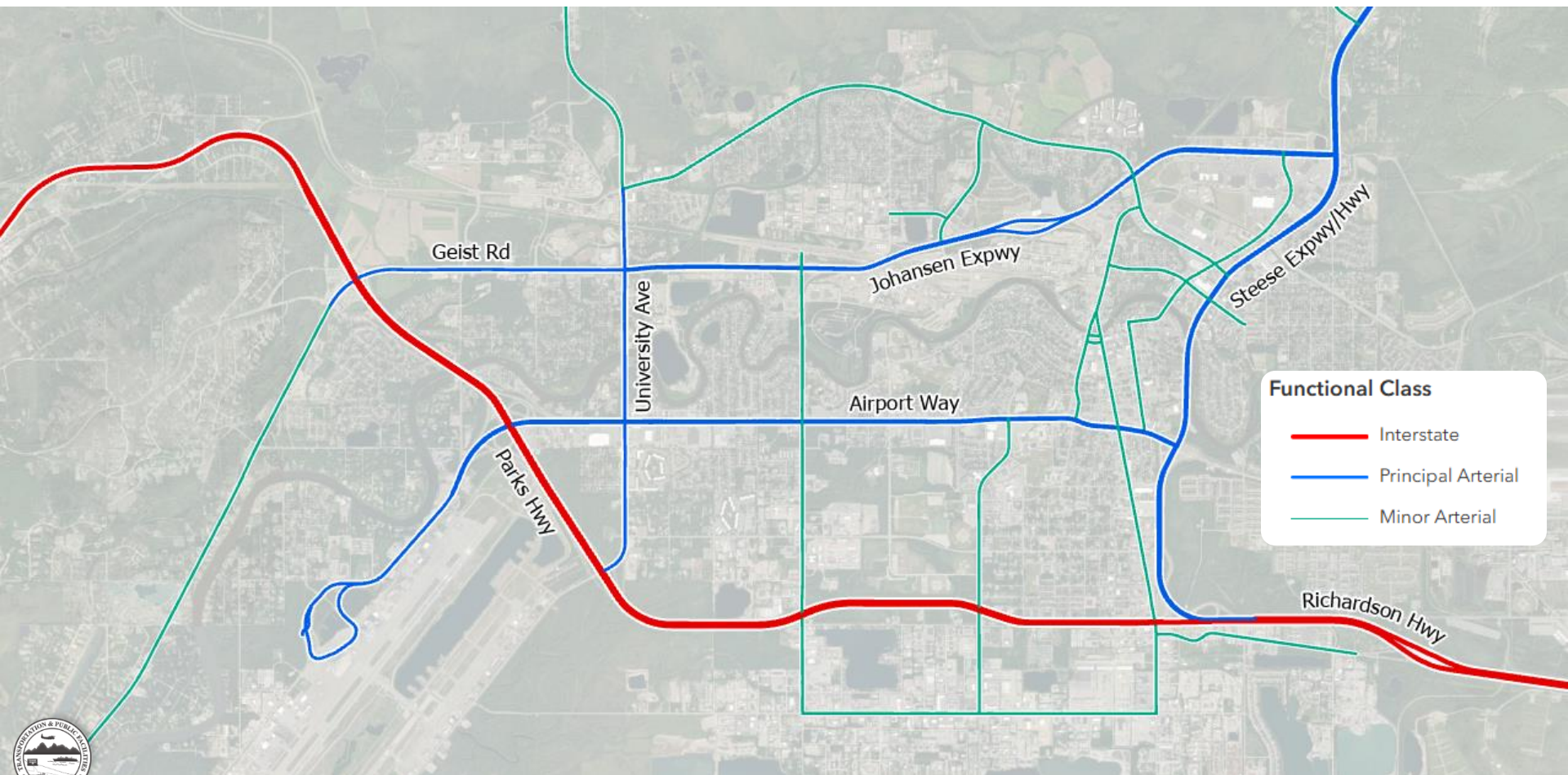


What is functional classification?

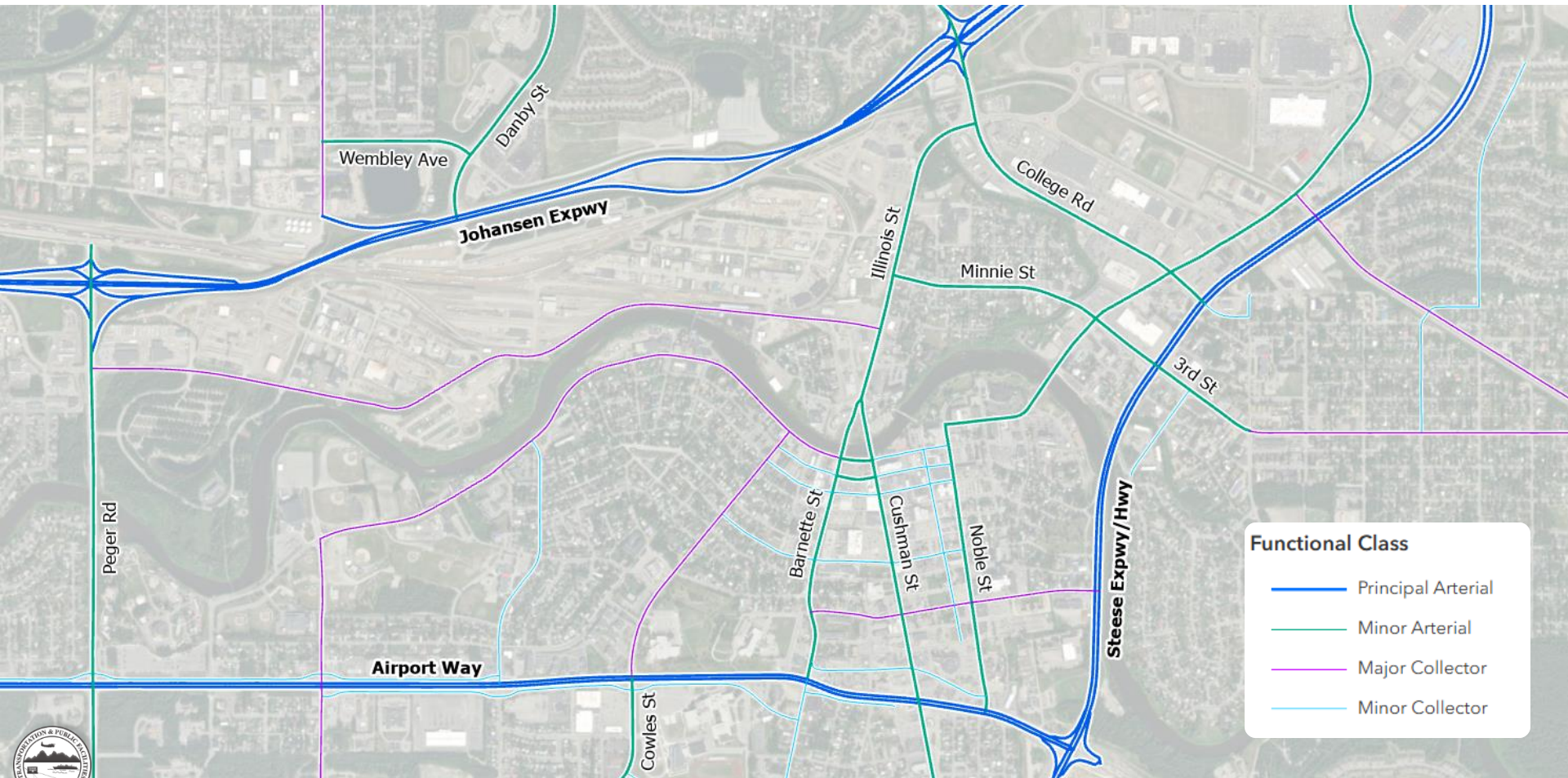
Based on the relative *mobility* and *access* provided by a given road



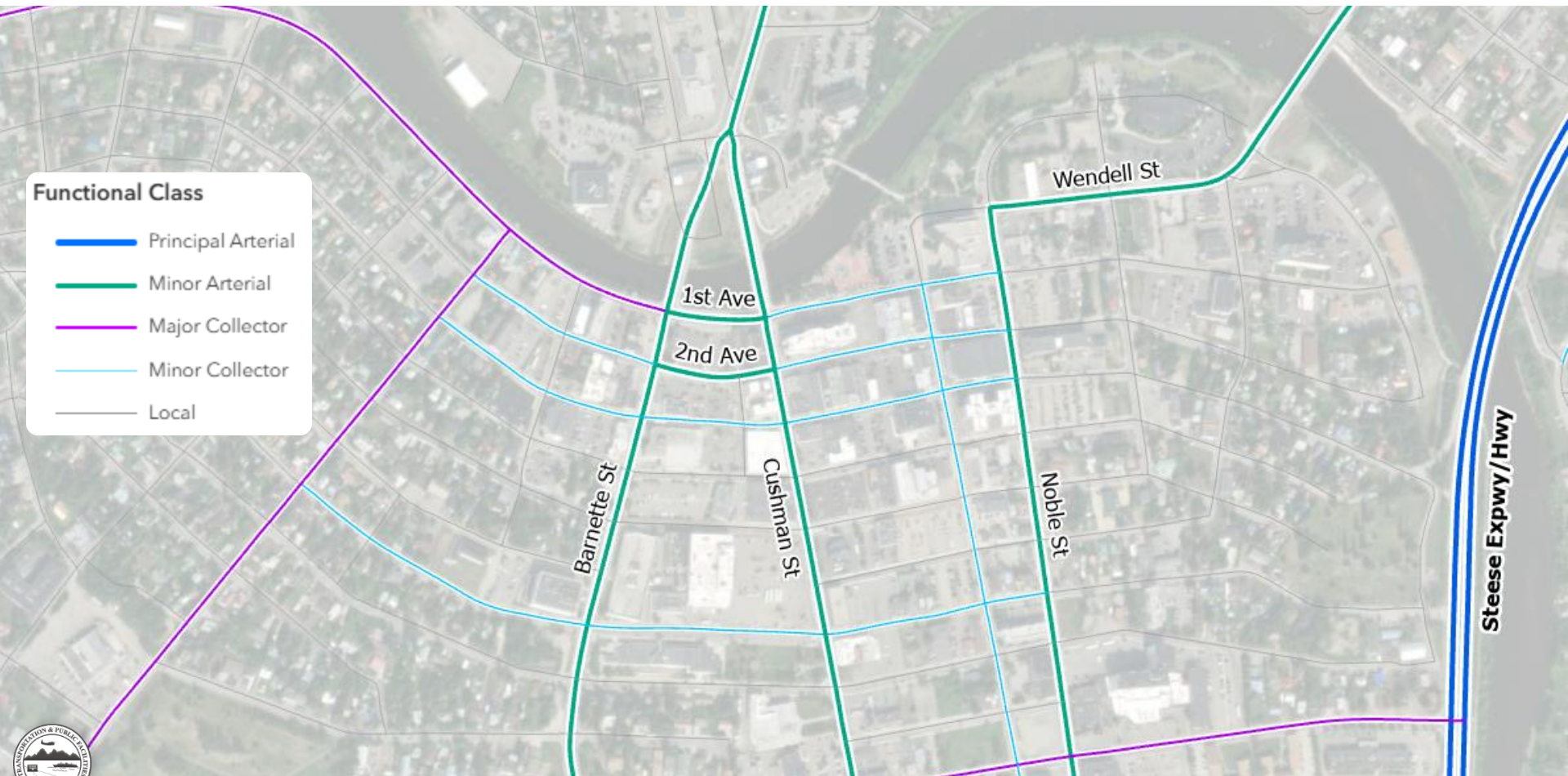
Arterials connect to the interstate and move traffic between communities



Collectors move traffic out to the **arterials**



Downtown Fairbanks has many **local** roads, numerous **collectors**, and few **arterials**



What gets classified?

Any road under the jurisdiction of, and maintained by, a public authority and open to public travel.

Included

- Alleyways
- Ramps
- Future roads
(approved for construction within 4 years)

Not Included

- Ice roads
- Water/ferry routes
- Boardwalks

How are decisions made?

Functional Classification

IS:

- A report of the current function of the road network
- Based on federal standards, but customized for Alaska

IS NOT:

- A way to communicate goals for the road network
- Driven by funding

Why does it matter?

Functional classification can influence:

MANAGEMENT

MAINTENANCE

FUNDING

DESIGN

EMERGENCY FUNDING

What are the criteria for classification?

Federal Highway Administration provides guidance.

Two types of criteria

● QUANTITATIVE ●

hard numbers, based on measurements

- Traffic volumes
- Number of intersections
- Speed limit
- Length of route
- Distance between routes
- Controlled or uncontrolled access



We use existing data to inform this part of the criteria



We collaborate with communities to inform this part of the criteria

● QUALITATIVE ●

subjective, based on local knowledge

- Types of destinations the route serves
- Local and statewide significance
- Whether route takes people to or through somewhere

Alaska-specific Criteria

Special consideration for Alaska's unique transportation network



Roads serving remote *airports* get classified as Collectors



Roads serving *seaports* or *ferry terminals* receive a higher classification

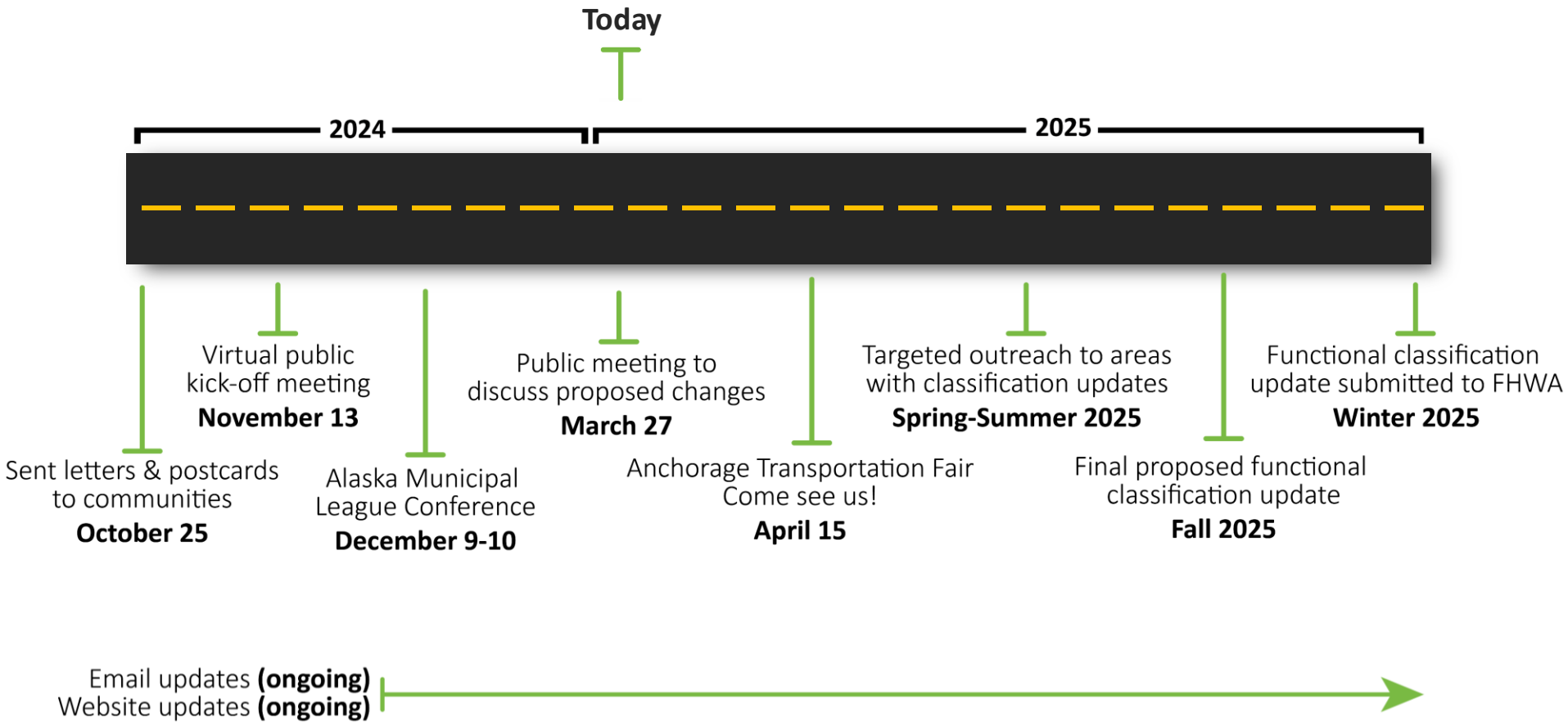


Areas disconnected from the core transportation network only have *Collectors* and *Locals* (unless population $\geq 2,500$)



What's next?

Project Schedule



We want to hear from you!

Review the proposed functional classification of any road in Alaska, and provide your feedback.

There's an app for that.

Alaska DOT&PF
Preliminary Functional Classification Review

What is Functional Classification? | How to Submit Feedback

Welcome to Alaska DOT&PF's functional classification feedback tool

This website allows you to review our statewide proposed functional classification updates and provide feedback. Please review the roads in your communities and let us know if you think we need to make changes before submitting the proposed functional classification to the Federal Highway Administration for approval. Your local insight is extremely valuable in this process! We are especially interested in your feedback on a road's context and how people use it that may not be apparent to someone unfamiliar with the area.

Need some help understanding functional classification and your role?

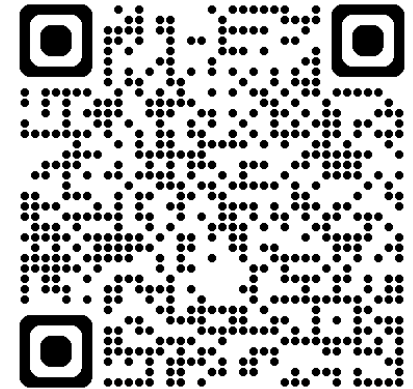
- Visit our [functional classification website](#) to learn more about the process
- View the [Alaska-specific criteria](#) we used to evaluate and update a road's functional classification
- Please contact our project manager if you have more questions: Lisa Idell-Sassi, Alaska DOT&PF, lisa.idell-sassi@alaska.gov

Next >

Search for name or FIPS code

- East Borough
- West Census Area
- Census Area
- ay Borough
- Chugach Census Area

Powered by Esri | Select Route >

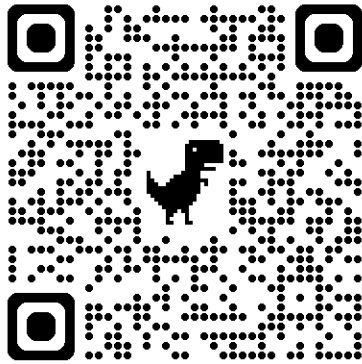


Stay Involved



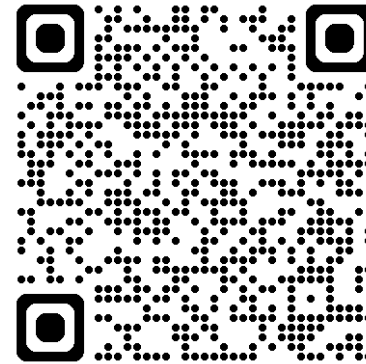
Project Website

<https://dot.alaska.gov/stwdplng/fclass/index.shtml>



Join our email list!

<https://lp.constantcontactpages.com/sl/uGtswCt>



Anchorage Transportation Fair

<https://anchorage-transportation-fair-baker.hub.arcgis.com>

Tuesday, April 15th, 2025

3:00 – 7:00 PM

@ Alaska Airlines Center





Questions?



THANK
YOU

