

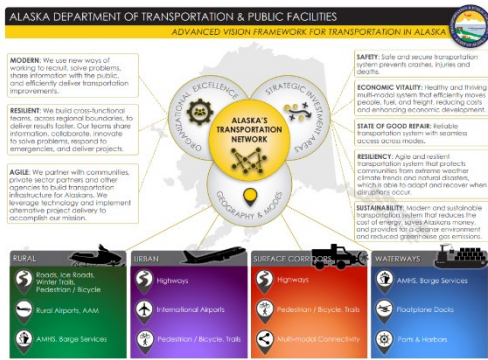
DOT&PF Complete Streets Policy Factsheet

The Alaska Department of Transportation & Public Facilities (DOT&PF) is in the early stages of developing a Complete Streets Policy. The policy is an approach to planning, designing, constructing, and maintaining streets and surface transportation. The foundation of a Complete Streets approach is to provide safe, accessible, and convenient transportation to all users, regardless of mode. The Complete Streets approach also prioritizes the needs of those whom the transportation system has historically disadvantaged.

Recent policy development accomplishments include virtual workshops and training in Complete Streets, internal Subject Matter Expert (SME) sessions, and in-person workshops in communities across the state. The draft policy recommendations will be available in July 2024.



DOT&PF is developing this policy to define actionable steps to reduce the number of non-motorized injury crashes and fatalities across Alaska. Along with creating DOT&PF’s Complete Streets policy, other policies, procedures, and manuals will be updated to incorporate the goals of Complete Streets. Developing a Complete Streets Policy is an action item in Alaska’s [Strategic Highway Safety Plan](#) and [Statewide Active Transportation Plan](#). Development of this policy is also a commitment DOT&PF made in becoming an Ally in Action in support of the National Roadway Safety Strategy. Below is a summary of [DOT&PF’s strategic plan](#) and an explanation of how Complete Streets impacts the strategic investment areas.



SAFETY

A safe and secure transportation system prevents crashes, injuries and deaths. Alaska ranks 23rd in pedestrian fatalities, with 59 pedestrian fatalities between 2016-2020, and has 1.6 deaths per 100,000 people each year. DOT&PF believes in our responsibility to proactively make our roads safe for everyone. Multiple elements of the complete streets policy will address risks and contributing factors of crashes, in particular for vulnerable road users.

ECONOMIC VITALITY

Fostering a healthy and thriving multi-modal system that efficiently moves people, and freight reduces costs and enhances economic development. Complete Streets builds and supports local economies with a transportation network that serves everyone. Complete Street projects cost over 75 percent less to build per mile compared to typical, car-focused transportation projects and they can bring a broad range of economic benefits for local economies, local governments, and communities including boosting employment levels, property values, investment from the private sector, and net new businesses.

STATE OF GOOD REPAIR

State of good repair and accessibility also shows how the environment can foster access for those with mobility, sensory, cognitive, and other disabilities to the greatest extent possible. Examples may include installing or upgrading curb ramps, improving year-round sidewalk maintenance, installing accessible pedestrian signals, and creating public alert systems when changes in the environment like a sidewalk detour, are expected. Providing reliable year-round access to all modes of transportation through state-of-good repair will be critical for the implementation of the complete streets policy.



RESILIENCY

Alaska is on the front lines of a changing climate. Our communities are experiencing stronger storms, earlier winter events, record precipitation, melting sea ice and an extensive permafrost thaw which has resulted in damaged homes and infrastructure. An agile and resilient transportation system that can adapt to changing conditions or disruptions protects communities from the impacts of extreme climate trends and natural disasters and is critical to the safety and prosperity of Alaska's communities. Transportation networks that accommodate and support multiple travel modes are more flexible and adaptable to the challenges and allow communities and responders options during events.

SUSTAINABILITY

A modern and sustainable system reduces the cost of energy, money, and provides for a cleaner reduced greenhouse gas emissions residents to pursue active energy efficient, and choose travel household needs. Alaska's system is diverse and unique, and reflect the need to be flexible based the facility. The core value of

EQUALITY:
Everyone gets the same – regardless if it's needed or right for them.



EQUITY:
Everyone gets what they need – understanding the barriers, circumstances, and conditions.



transportation saves Alaskans environment and and also allows transportation, be that fits their own transportation the policy will on the context of making streets safe

for all users will look different in different types of communities. In the context of Complete Streets, accessibility and equity means considering all users and giving extra consideration to those who face more systemic and structural barriers. This could take the form of reducing public transit fares, accommodations for those with disabilities, and ensuring that community input is a key part of the decision making and implementation process.