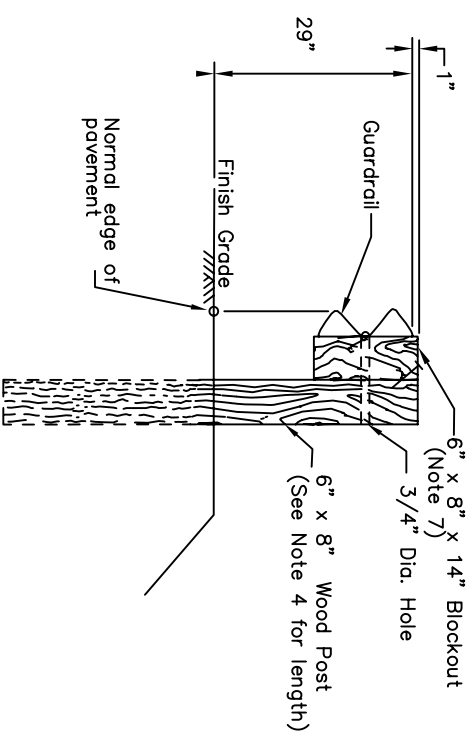
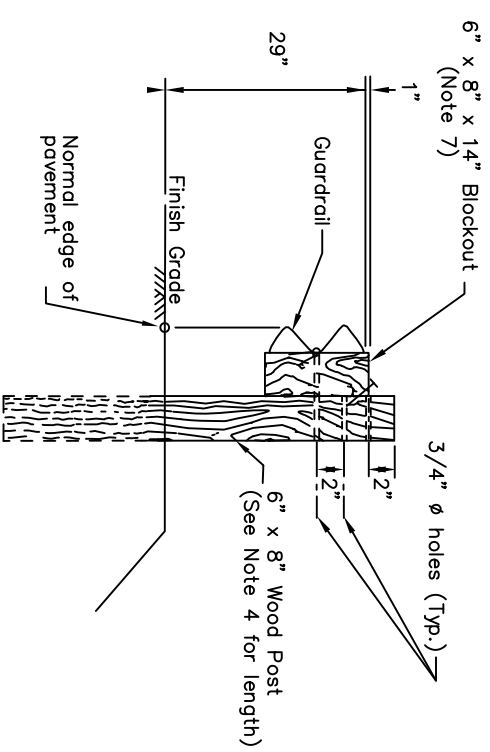


GENERAL NOTES:

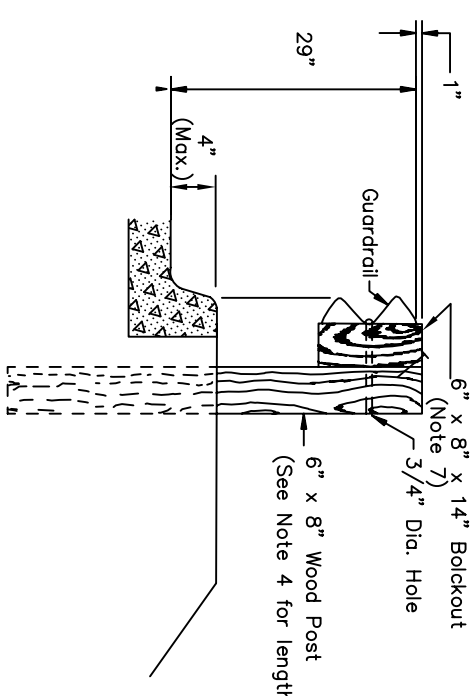
1. Attach guardrail reflectors at 50' centers beginning with the first post. Use Type A reflectors unless specified otherwise.
2. Provide hardware compliant with the AASHTO/AGC/ARTBA "A Guide to Standardized Highway Barrier Hardware," latest edition.
3. See Standard Drawing G-00 for hardware details.
4. See Standard Drawing G-10 for post lengths corresponding to different combinations of slope and behind-post embankment width.
5. Typical post spacing is 6'-3" center to center.
6. This barrier is acceptable under NCHRP 350, TL-3.
7. Use wood, rubber, plastic, or other NCHRP 350 or MASH approved blockouts designed to be used with wood posts.
8. Use 25 linear foot transition to match height of existing or new rail elements and end treatments.



TYPE I POST INSTALLATION



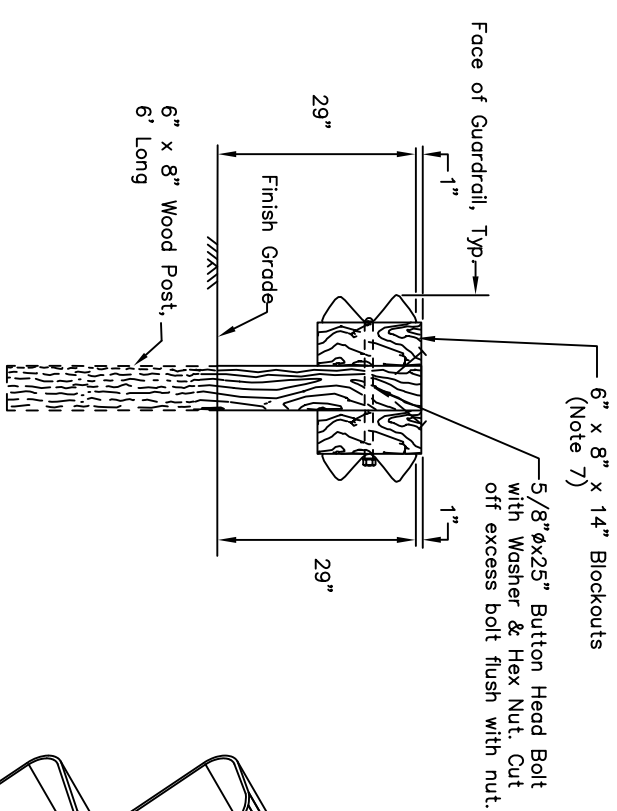
TYPE II POST INSTALLATION
(Facilitates raising rail for future overlays.)



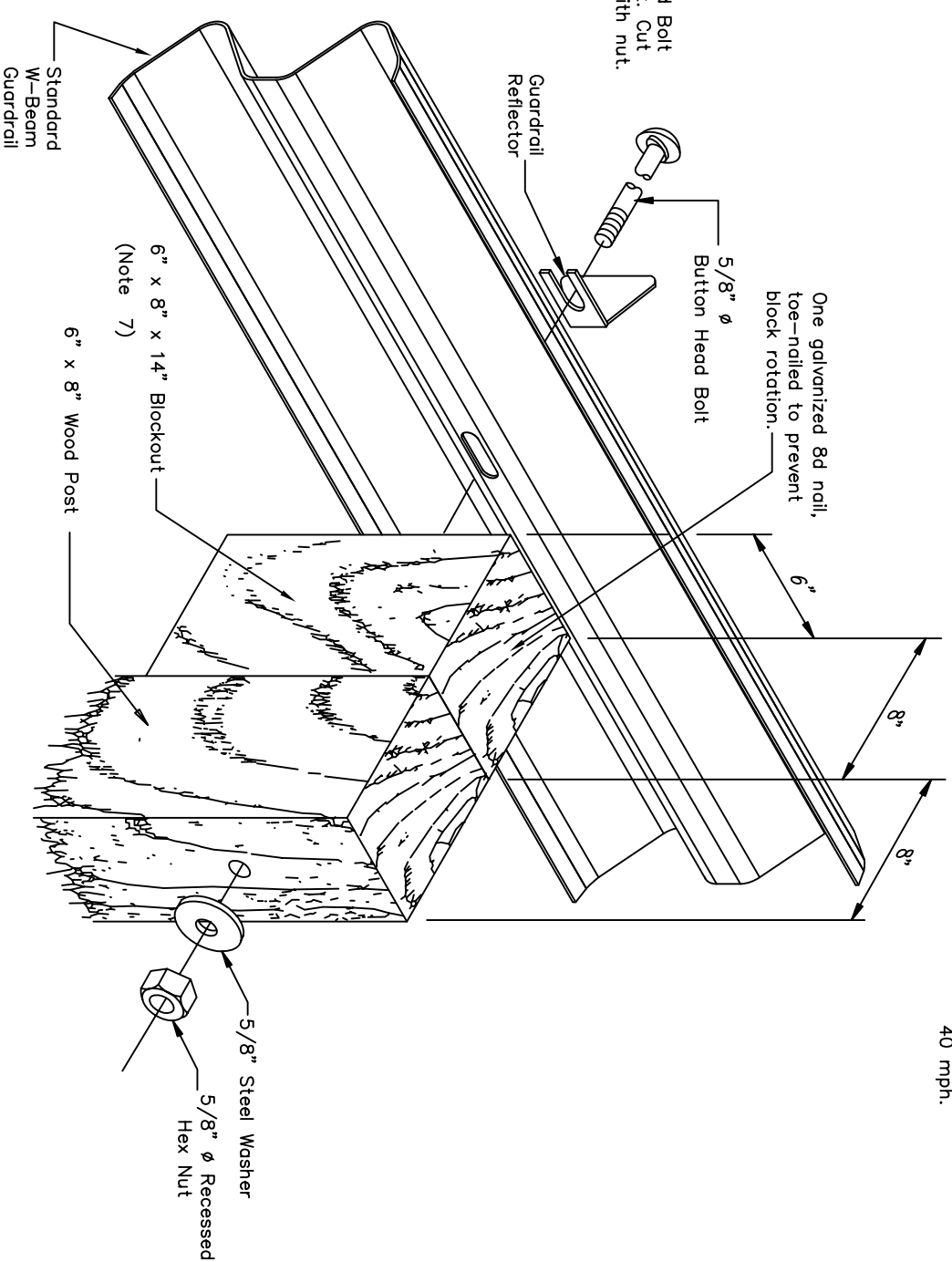
CURB DETAIL

TYPE III POST INSTALLATION

NOTE: Curb should not be installed with guardrail when the speed limit exceeds 40 mph.



TYPE IV DOUBLE SIDED INSTALLATION



ASSEMBLY DETAIL
(Type I post shown)

REVISIONS	
Date	Description
12/1/87	12'-0" behind post
5/15/89	Ret S&S to rough sawn
4/1/93	Hinge point note
1/1/96	Del. hardware/ add type II
3/15/99	Post length and misc
4/1/13	Double-sided detail and increase g.r. height

State of Alaska
Department of Transportation
& Public Facilities
**WOOD POST
W-BEAM GUARDRAIL**

APPROVED
DATE: 05/15/13