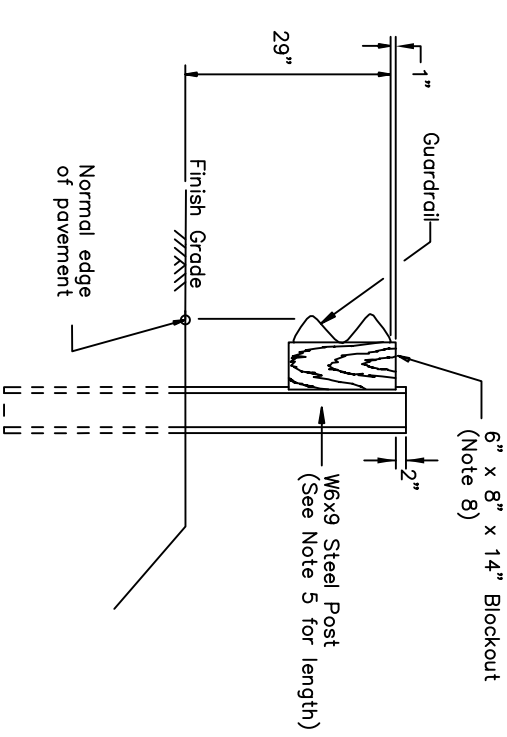
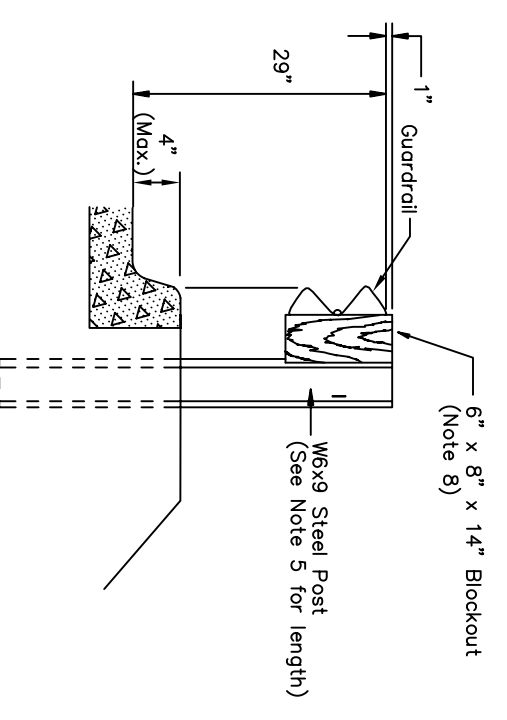


TYPE I POST INSTALLATION



TYPE II POST INSTALLATION
(Facilitates raising rail for future overlays.)



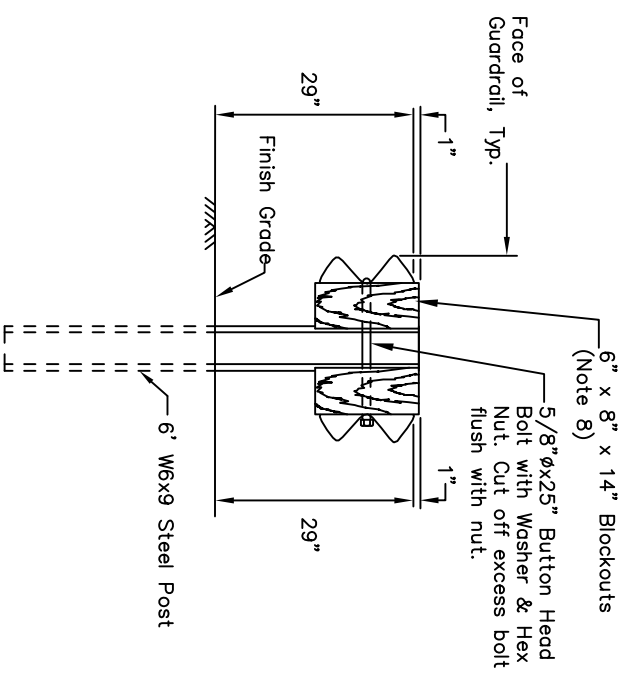
TYPE III POST INSTALLATION

NOTE: Curb should not be installed with guardrail when the speed limit exceeds 40 mph.

CURB DETAIL

GENERAL NOTES:

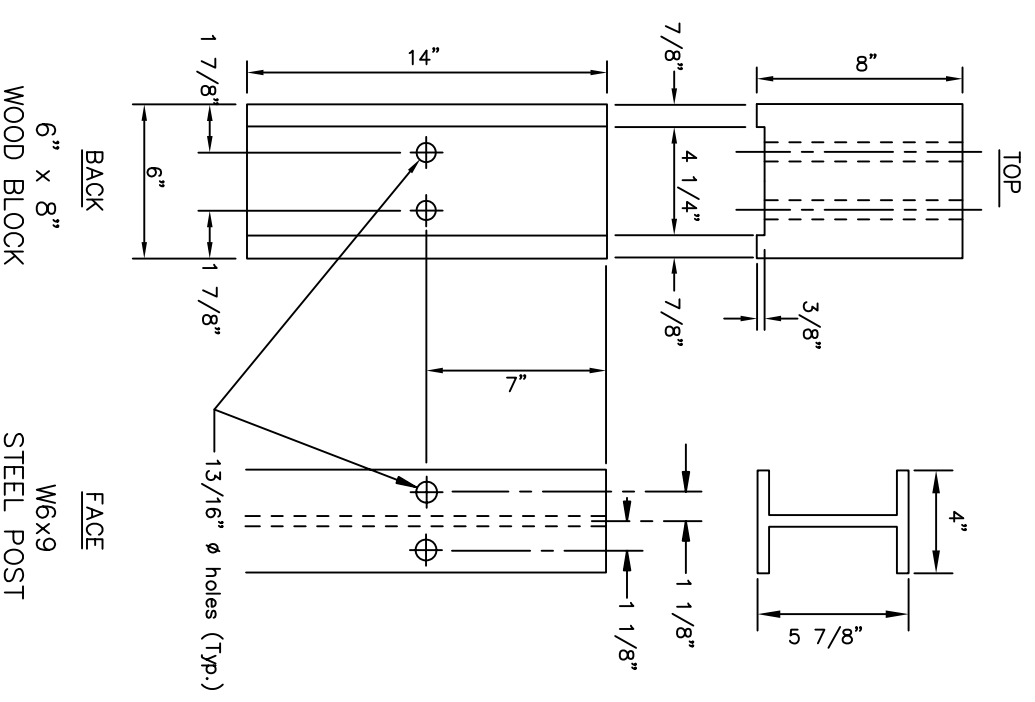
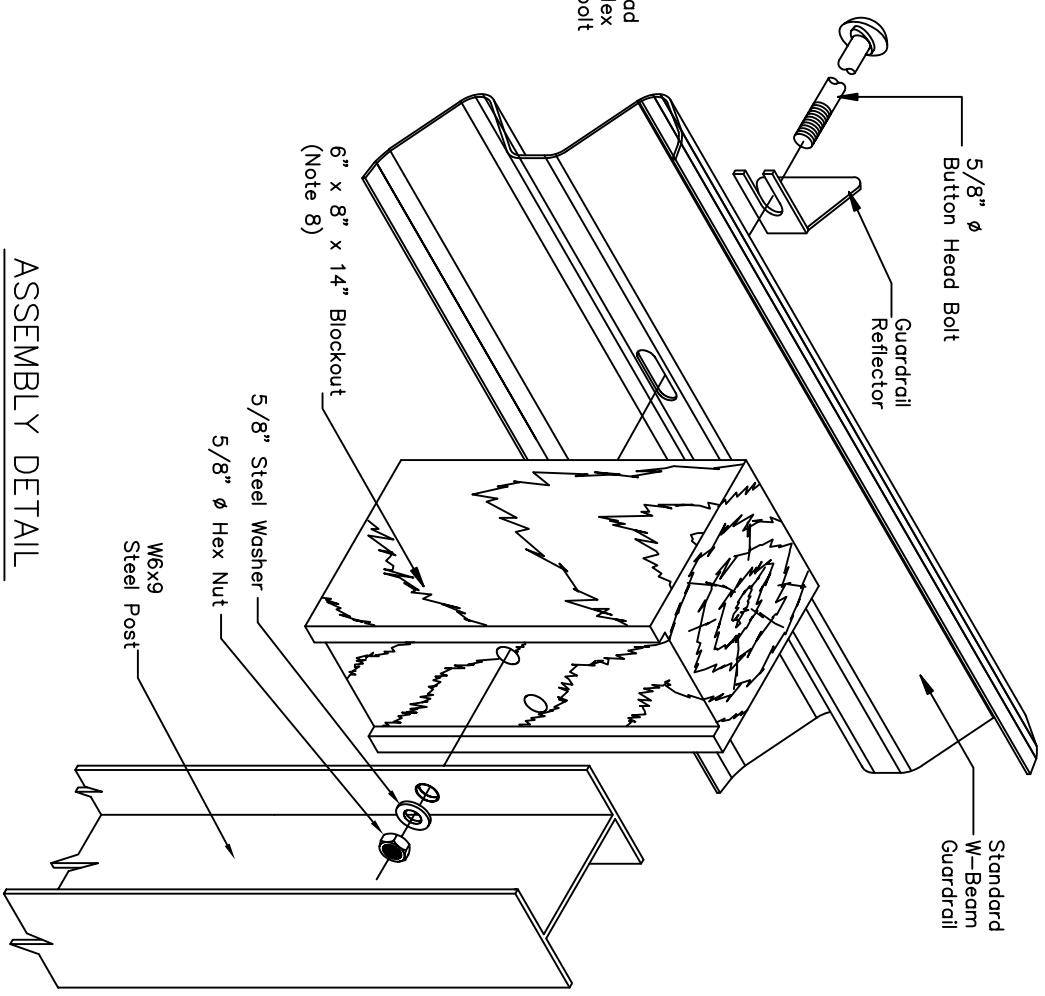
1. Attach guardrail reflectors at 50' centers beginning with the first post. Use Type A reflectors unless specified otherwise.
2. Provide hardware compliant with the AASHTO/AGC/ARTBA "A Guide to Standardized Highway Barrier Hardware," latest edition.
3. See Standard Drawing G-00 for hardware details.
4. Mount rail to block with bolt on approaching traffic side of block web.
5. See Standard Drawing G-10 for post lengths corresponding to different combinations of slope and behind-post embankment width.
6. Typical post spacing is 6'-3" center to center.
7. This barrier is acceptable under NCHRP 350, TL-3.
8. Use wood, rubber, plastic, or other NCHRP 350 or MASH approved blockouts designed to be used with steel posts
9. Use 25 linear foot transition to match height of existing or new rail elements and end treatments.
10. W6x8.5 steel post may be substituted for W6x9 steel post.



TYPE IV DOUBLE SIDED INSTALLATION

ASSEMBLY DETAIL

(Type I post shown)



REVISIONS	
Date	Description
3/1/83	Revised gen. notes
1/1/86	Revised hanger detail
3/15/99	Block and post length
4/1/13	Add double-sided detail and increase g.r. height

State of Alaska
Department of Transportation
& Public Facilities
STEEL POST
W-BEAM GUARDRAIL

APPROVED
DATE: 05/15/13