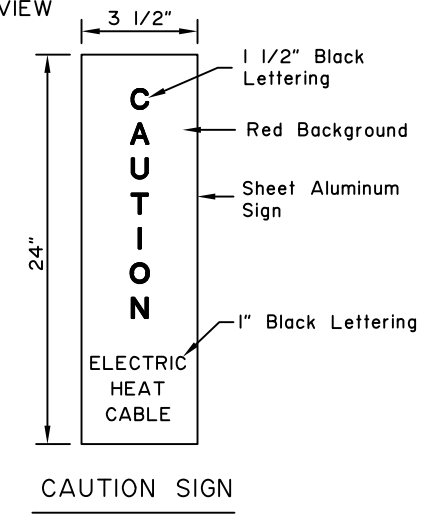
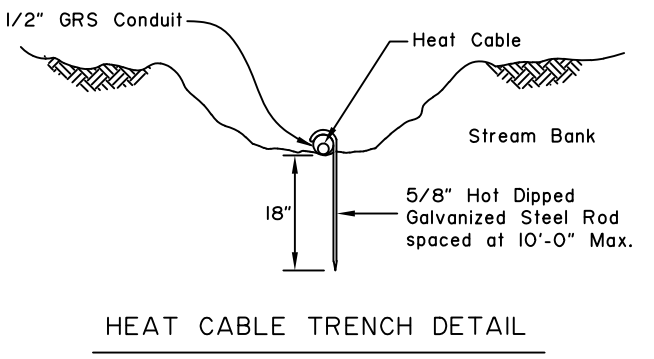
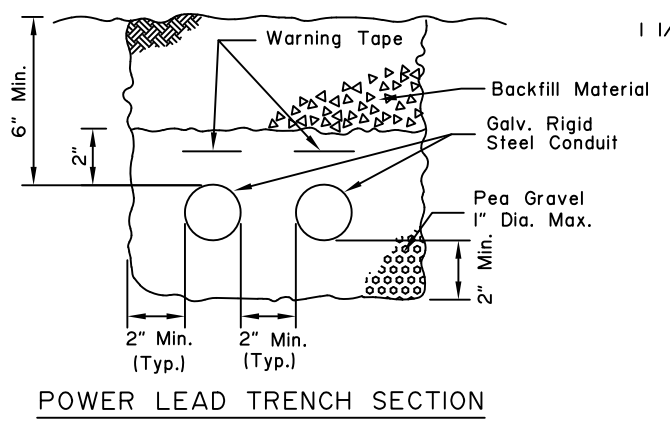
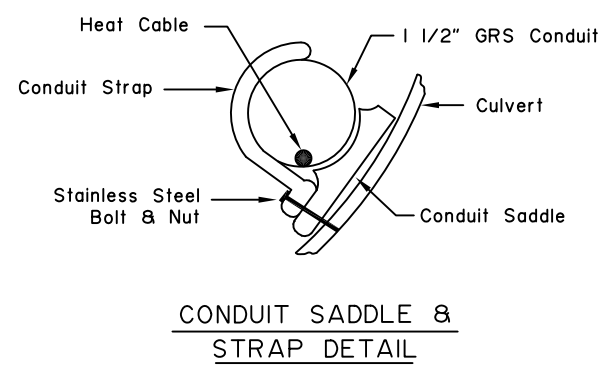
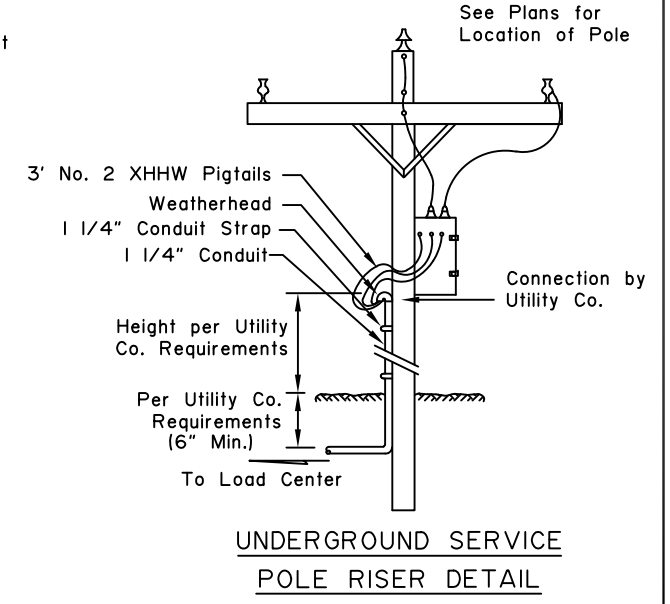
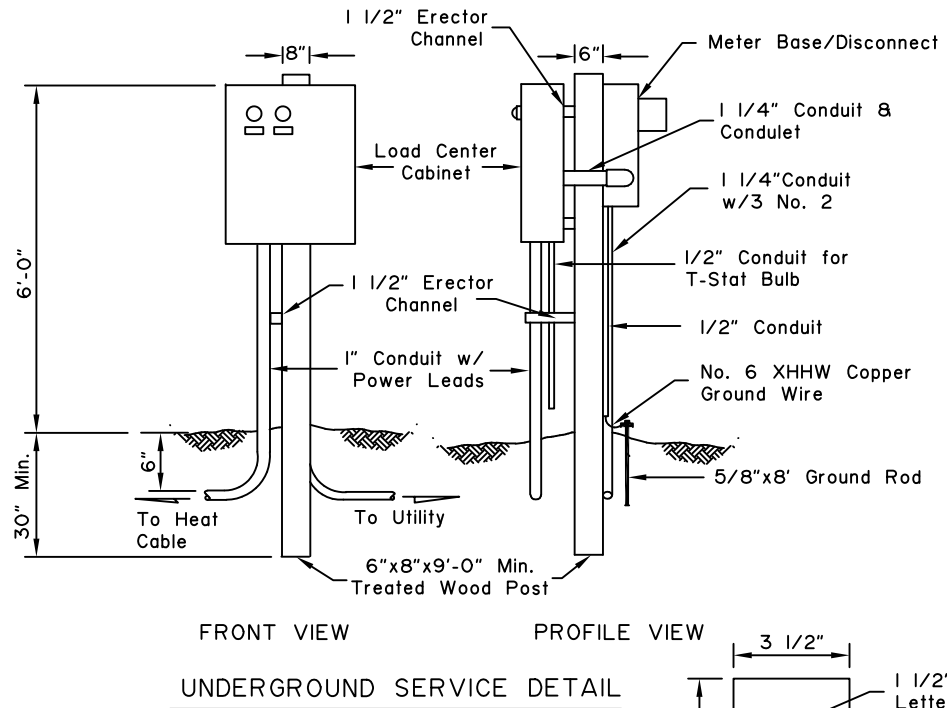
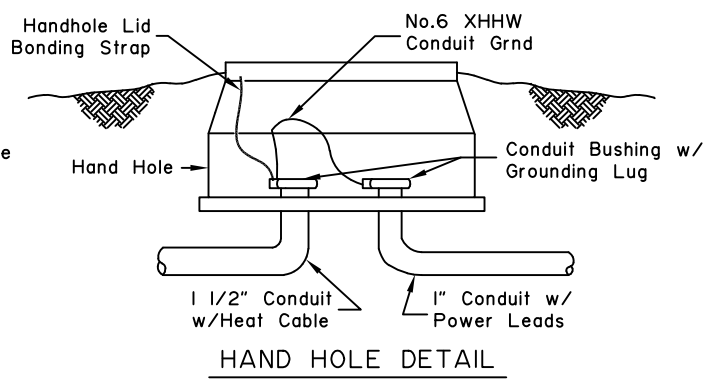
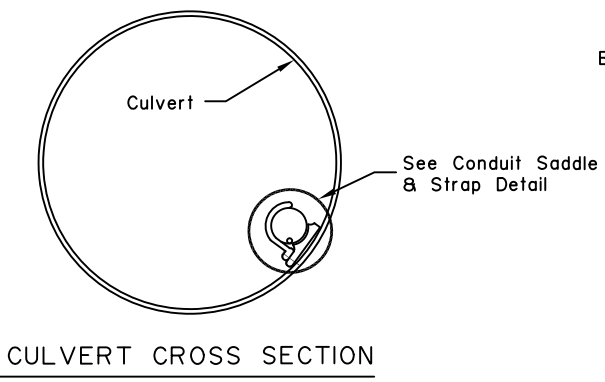
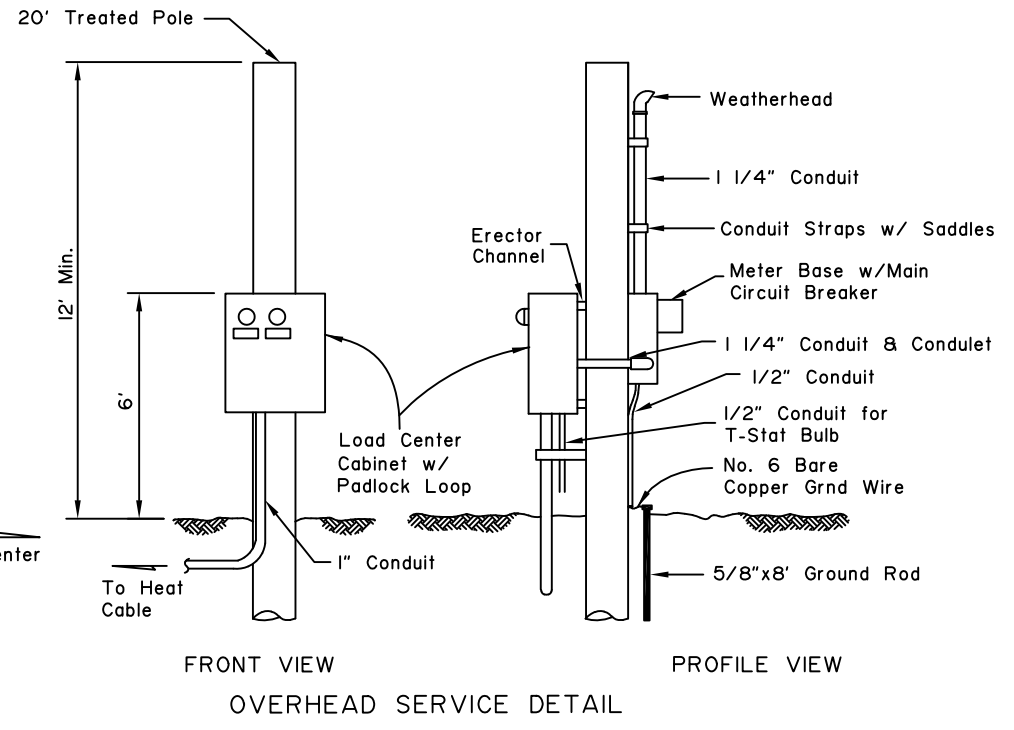
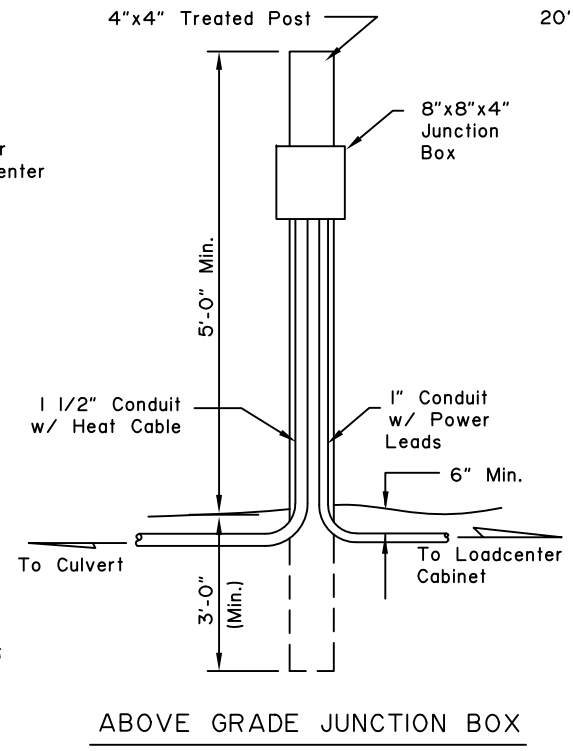
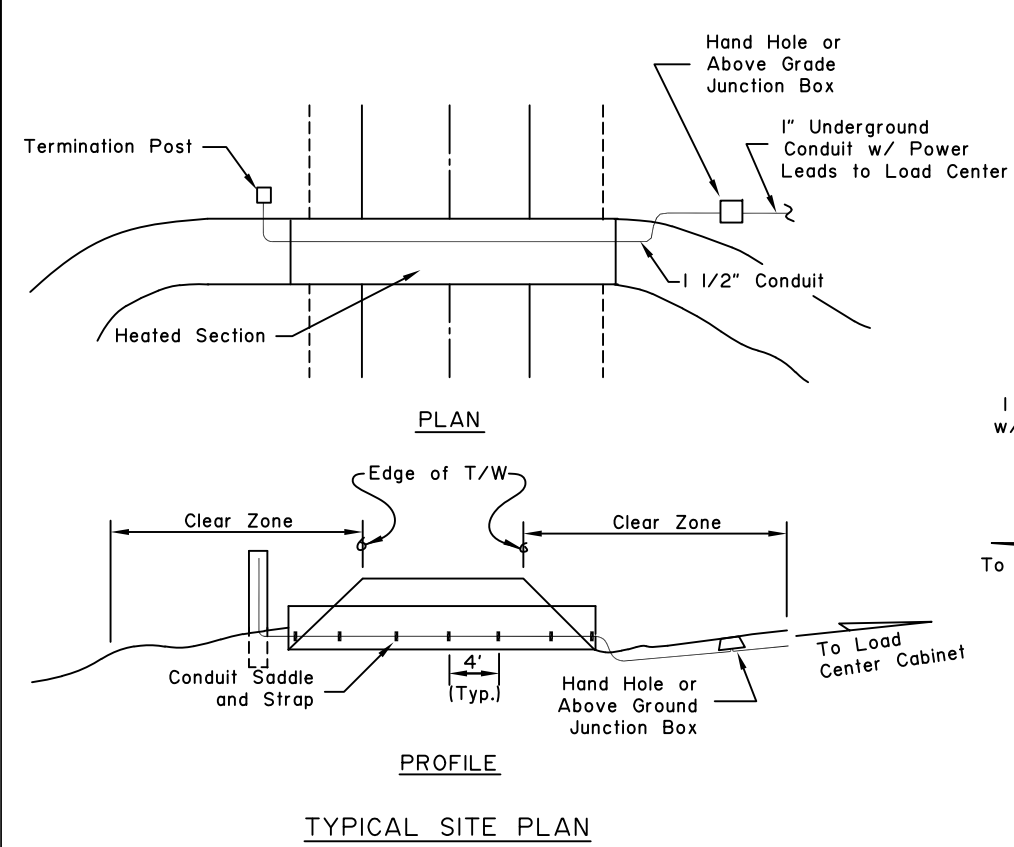


GENERAL NOTES:

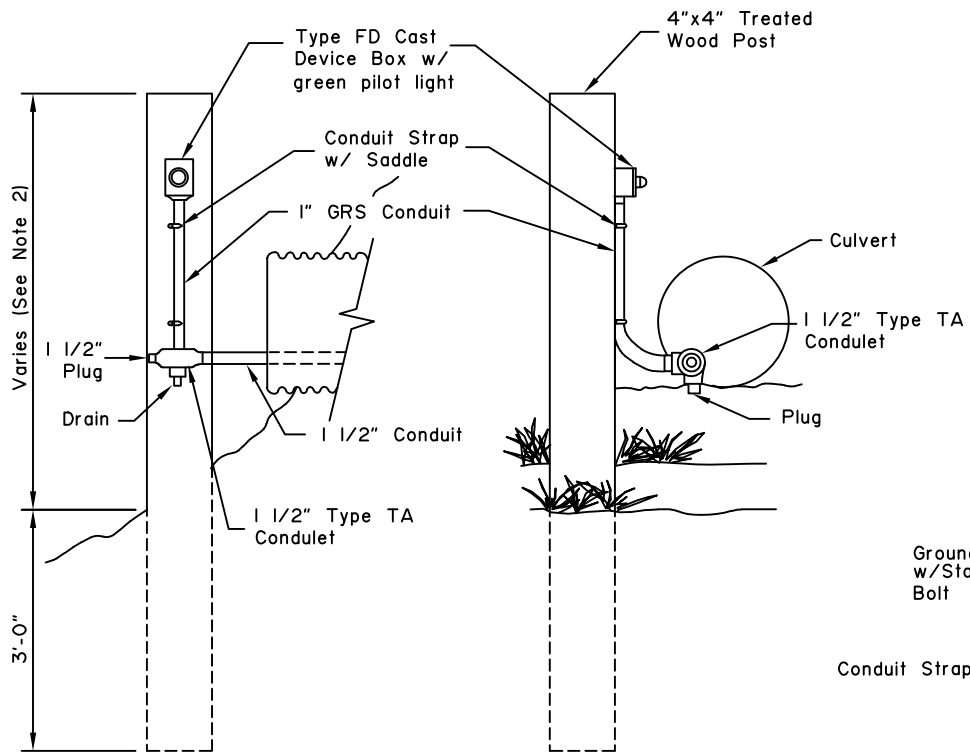
1. Load Center Cabinet shall be located outside of the clear zone and above high water.
2. Caution Sign shall be mounted to the side of treated posts facing highway at the culvert entry and exit and at the Loadcenter Cabinet.
3. See Alaska Highway Preconstruction Manual for 'Clear Zone' requirements.
4. Junction boxes shall be used in place of hand holes at wet locations and shall be mounted at 48" or at 24" above high water if greater than 48".



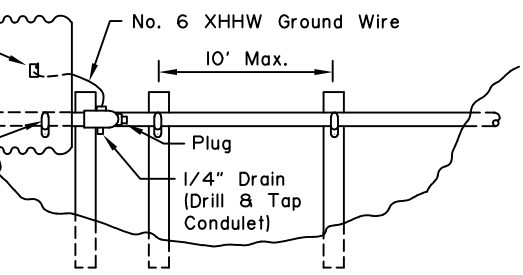
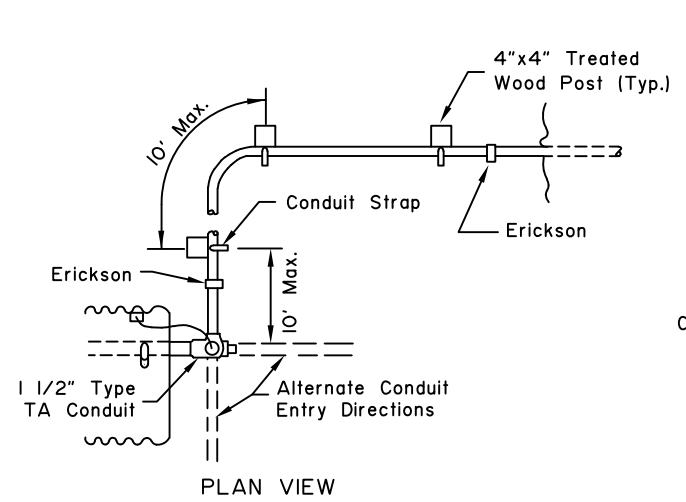
State of Alaska DOT&PF
 ALASKA STANDARD PLAN
CULVERT THAW WIRE INSTALLATION
 Adopted as an Alaska Standard Plan by: *Kenneth J. Fisher*
 Kenneth J. Fisher, P.E.
 Chief Engineer
 Adoption Date: 02/08/2019
 Last Code and Stds. Review By: Date:
 Next Code and Standards Review date: 02/08/2029

GENERAL NOTES:

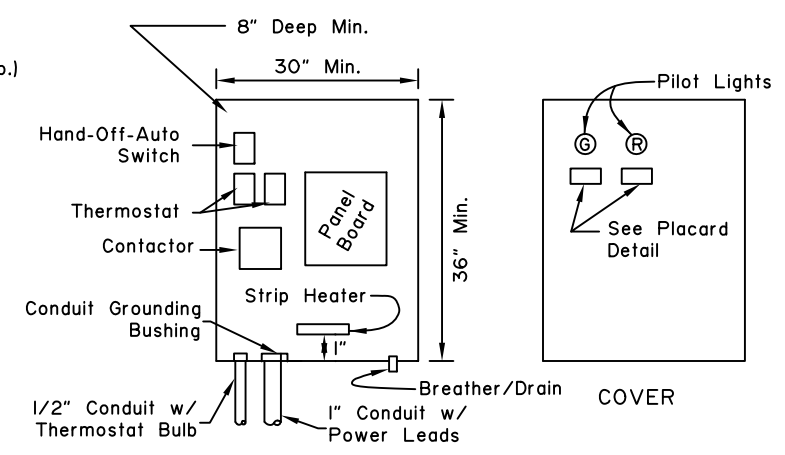
1. Loadcenter Cabinet panel face shall be placed parallel with the highway.
2. Type FD Cast Device Box w/green pilot light on the termination post shall be located a minimum of 6" above high water.



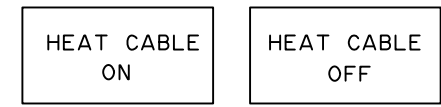
FRONT VIEW PROFILE VIEW
TERMINATION POST DETAIL



PLAN VIEW
ELEVATION
CULVERT ENTRY DETAIL



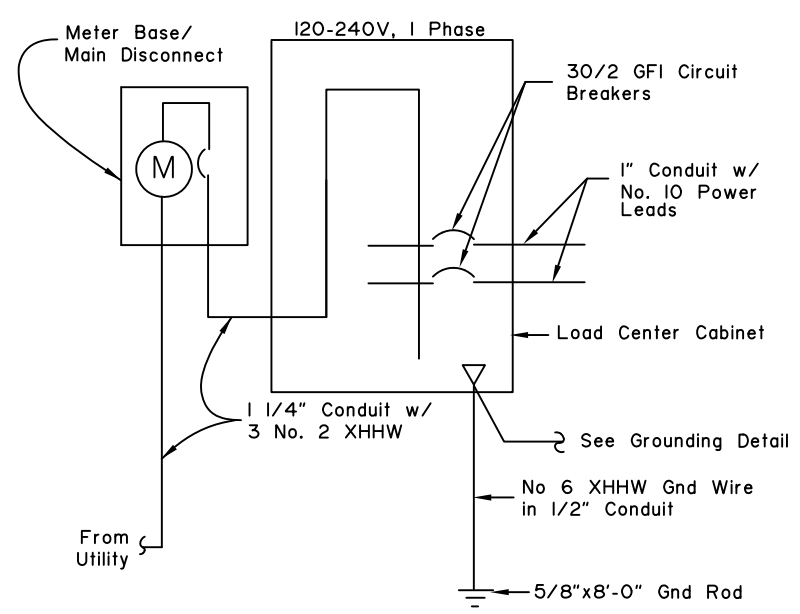
LOAD CENTER CABINET
(NEMA 4 Cabinet w/ Drip Shield)



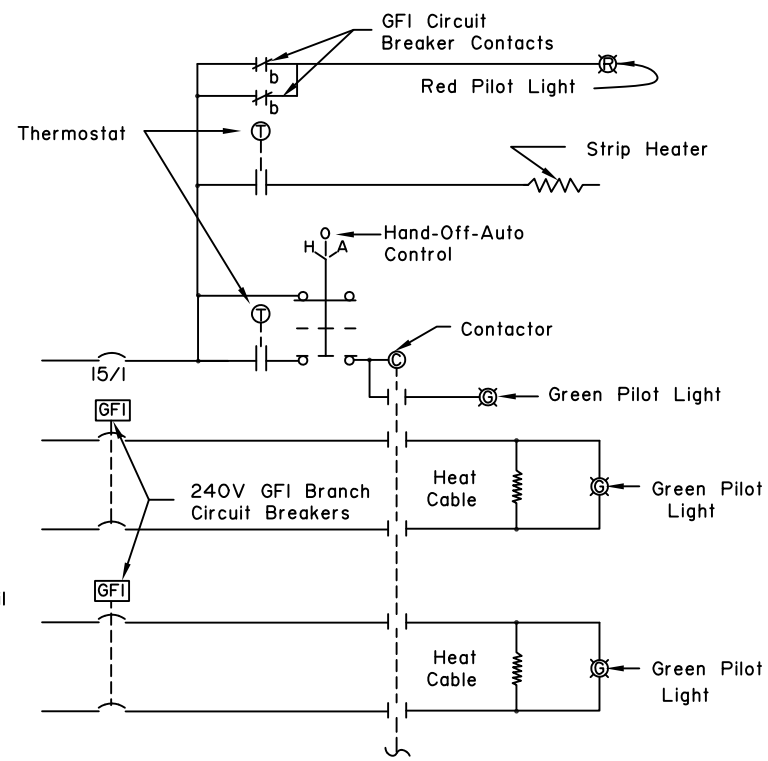
PLACARD DETAIL

SIZE	MAX. LENGTH
15/2	175 Ft.
20/2	240 Ft.
30/2	320 Ft.
40/2	415 Ft.

CIRCUIT BREAKER SIZING TABLE

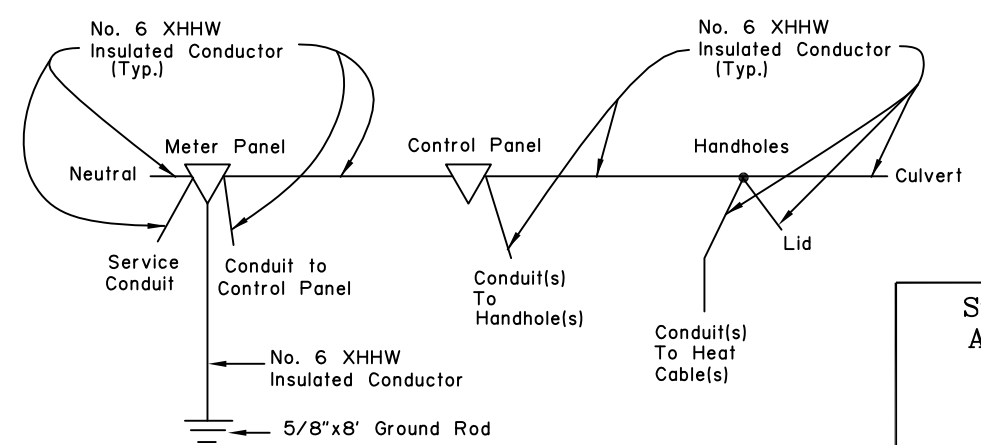


SINGLE LINE DIAGRAM



CONTROLS DIAGRAM

NOTE: May use same scheme for other quantities of Heat Cable Circuits.



GROUNDING DETAIL

State of Alaska DOT&PF
ALASKA STANDARD PLAN
CULVERT THAW
WIRE INSTALLATION

Adopted as an Alaska Standard Plan by: *Kenneth J. Fisher*
Kenneth J. Fisher, P.E.
Chief Engineer

Adoption Date: 02/08/2019

Last Code and Stds. Review By: Date:

Next Code and Standards Review date: 02/08/2029