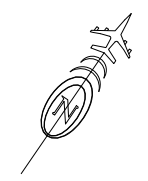
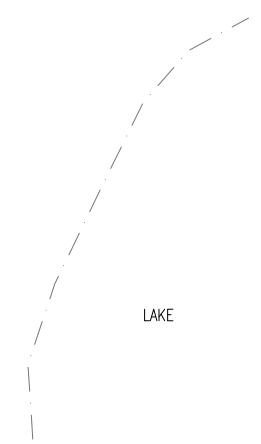
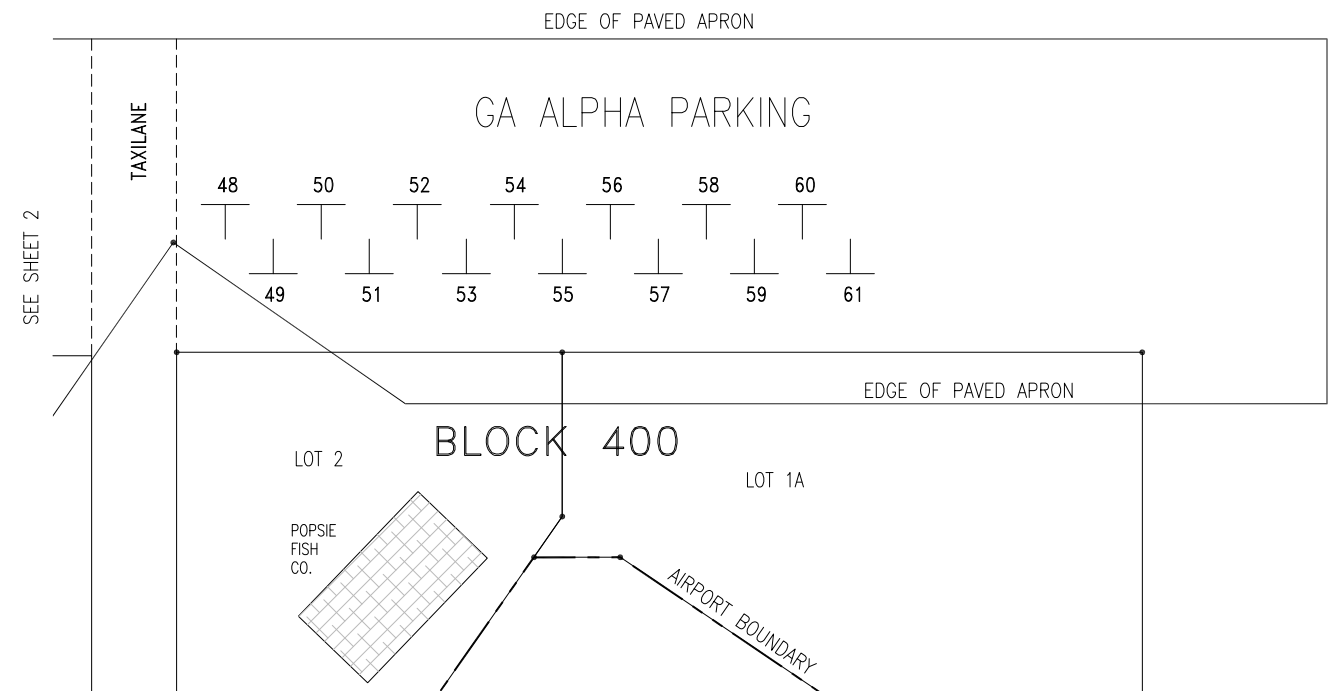


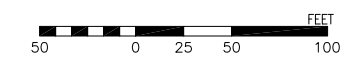
OVERFLOW TRANSIENT PARKING



CONTINUATION OF GA ALPHA PARKING

STATE OF ALASKA
DEPARTMENT OF TRANSPORTATION
AND PUBLIC FACILITIES
AVIATION LEASING

HOMER AIRPORT
TIEDOWN PLAN



BY	DATE	CHANGE

REVISIONS

APPROVED		
TINA SCHIMSCHAT CHIEF, AVIATION LEASING		
DATE:		
SCALE	DWN	CP
1" = 50'		
DATE	6/25/10	SHEET 3 OF 3

V:\Avi\A_10\Homer\Homer1-tiedowns3 Jun/28/10