

RUNWAY DATA		
	EXISTING	ULTIMATE
% WIND COVERAGE	NO DATA	AS
INSTRUMENT RUNWAY	NONE	R/W 35
RUNWAY SURFACE TYPE	GRAVEL	SAME
PAVEMENT STRENGTH	N/A	SAME
APPROACH SURFACES	20:1/20:1	20:1/34:1
APPROACH VISIBILITY MINIMUMS	1/2 MILE/2/4 MILE	1/2 MILE/2/3/4 MILE
RUNWAY LIGHTING	MIRL	SAME
RUNWAY MARKING	NONE	SAME
VISUAL APPROACH AIDS	NONE	PAPIS & REILS
R/W DIMENSIONS	100' X 3600'	SAME
R/W SAFETY AREA	150' X 4200'	SAME
R/W OBJECT FREE AREA (ROFA)	500' X 4200'	SAME
R/W OBSTACLE FREE ZONE (ROFZ)	400' X 4000'	SAME
1/2 W WIDTH	50'	SAME
1/2 W SAFETY AREA WIDTH	120'	SAME
1/2 W OFA	188'	SAME

AIRPORT DATA		
	EXISTING	ULTIMATE
AIRPORT ELEVATION (MSL)	50.5'	58'
AIRPORT REFERENCE CODE	B-II	B-II
MEAN DAILY MAX. TEMP. HOTTEST MONTH (JULY)	65°F	65°F
TAXIWAY LIGHTING	MITL	MITL
RAMP LIGHTING	NONE	NONE
NAVIGATION AIDS	BEACON, GPS	BEACON, GPS
COMMUNICATION AIDS	NONE	NONE
AIRPORT REFERENCE POINT (ARP)	LAT. 61°46'29.80"N	
	LONG. 151°19'09.84"W	
ULTIMATE STA. 128+00	LAT. 61°46'47.18"N	
THRESHOLD R/W 17 STA. 7+00	LAT. 61°18'04.89"W	
ULTIMATE STA. 110+00	LAT. 61°46'12.03"N	
THRESHOLD R/W 35 STA. 34+00	LAT. 61°18'14.68"W	
ULTIMATE STA. 146+00	LAT. 61°18'14.68"W	

DATA BASE CONTROL YEAR: NAD 83

LEGEND		
	EXISTING	ULTIMATE
PROPERTY LINE	---	---
BUILDING RESTRICTION LINE (B.R.L.)	---	---
DEVELOPMENT	---	---
WIND CONE & SEGMENTED CIRCLE STA. 6+90, 250' RT.	(Symbol)	(Symbol)
WIND CONE ONLY	(Symbol)	(Symbol)
BUILDINGS	(Symbol)	(Symbol)
ROADWAYS	---	---
REIL	---	---
AIRPORT REFERENCE POINT	(Symbol)	(Symbol)
ROTATING BEACON	(Symbol)	(Symbol)
ANTENNAE/TOWERS	(Symbol)	(Symbol)
PAPI	(Symbol)	(Symbol)
SHORELINE/WATERLINE	(Symbol)	(Symbol)
TREELINE	(Symbol)	(Symbol)
THRESHOLD	(Symbol)	(Symbol)
OVERHEAD POWER	(Symbol)	(Symbol)

- NOTES
- NO OFZ OBJECT PENETRATIONS.
 - NO THRESHOLD SITING SURFACE OBJECT PENETRATIONS.
 - ASP GRID BEARING FOR ULTIMATE R/W 17-35 IS N 06°50'17" E.
 - THE GEODETIC COORDINATES WERE CALCULATED FROM SURVEY CONTROL TIES TO REFERENCE MONUMENT #1 TO TRI STA. "RUSS".

NONSTANDARD CONDITIONS			
ITEM	STANDARD	EXISTING	ULTIMATE
LANDFILL DIST. FROM RUNWAY	5,000'	2,600'	5,000'

DESIGN_PKS	
DRAWN_CAT	
CHECKED_PDM	
BY	DATE
EJM	06/19/04
EJM	02/27/04
AS-BUILT	
AS-BUILT	
REVISIONS	

STATE OF ALASKA
DEPARTMENT OF TRANSPORTATION AND PUBLIC FACILITIES
NORTHERN REGION-DESIGN AND CONSTRUCTION-AVIATION

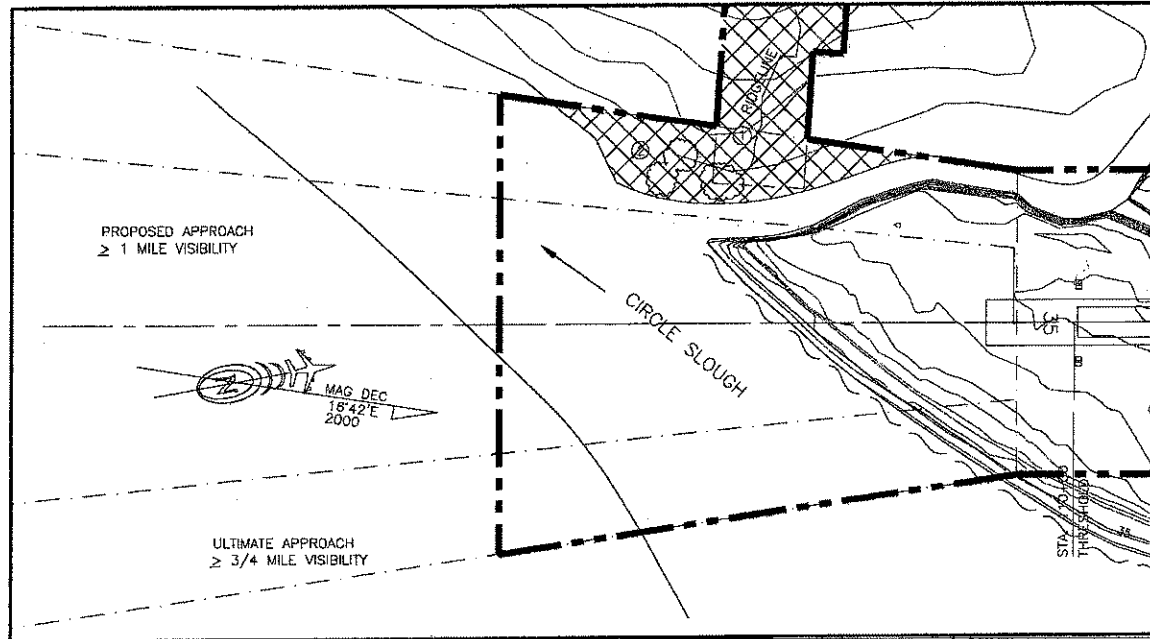
APPROVED *[Signature]* DATE 8/20/04

AIRPORT LAYOUT PLAN APPROVED
BY LETTER DATED: 8/30/04
[Signature]
AIRPORTS DIVISION,
ALASKAN REGION, AAL-601
AIRSPACE REVIEW #99AAL-161NRA

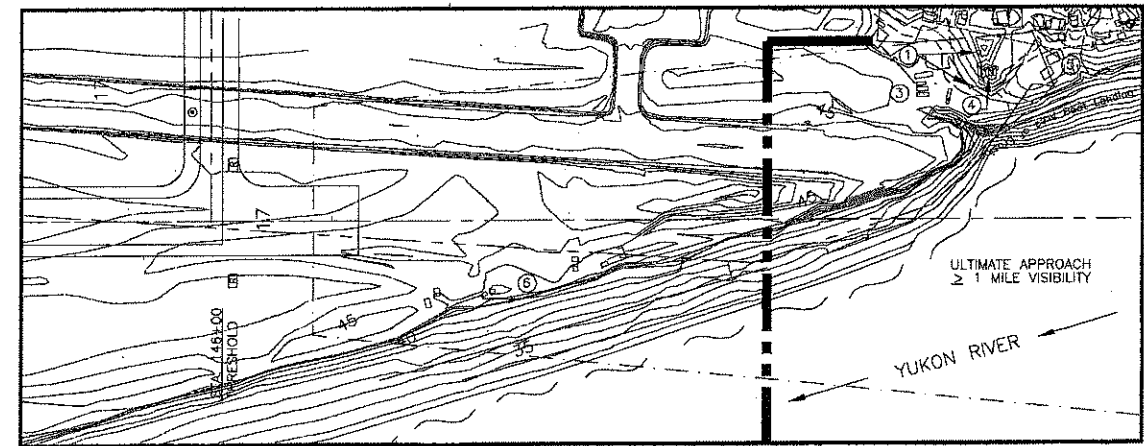
THIS ALP WAS PREPARED FROM AS BUILTS OF PROJECT 3-02-0249-01
DATED 12/15/03 AND SUPERCEDES THE PREVIOUS ALP APPROVED 2/14/00

RUSSIAN MISSION AIRPORT
AIRPORT LAYOUT PLAN

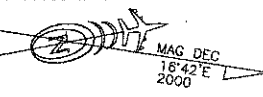
SHEET
1 OF 4



R/W 35 APPROACH PLAN

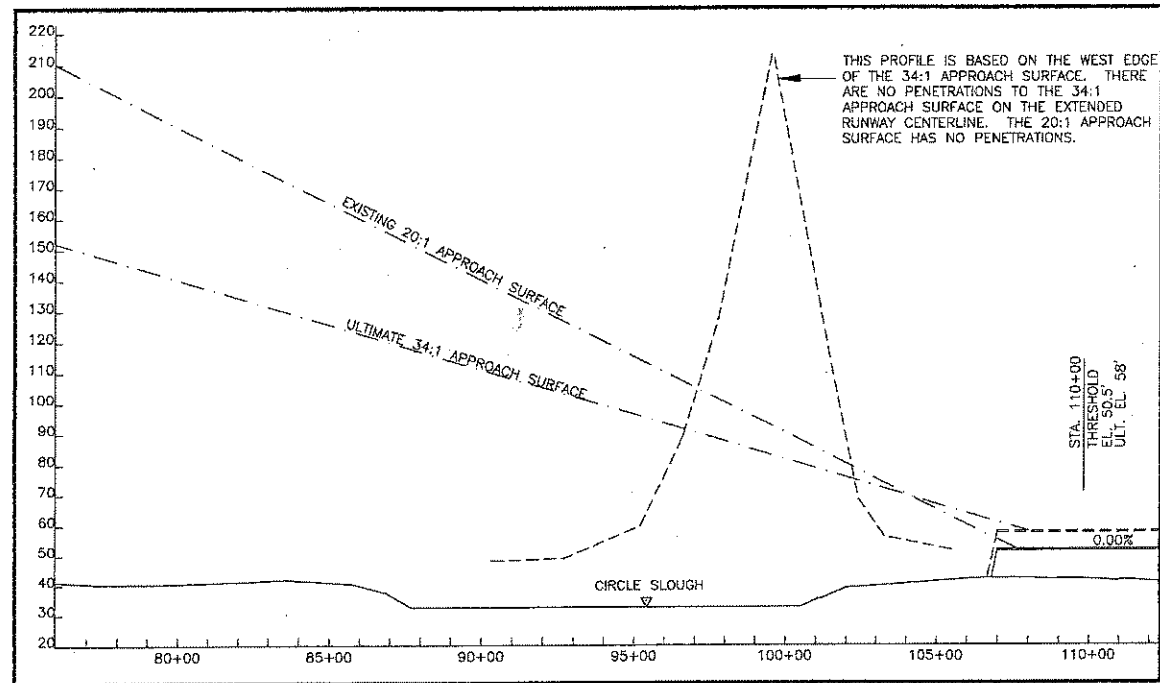


R/W 17 APPROACH PLAN

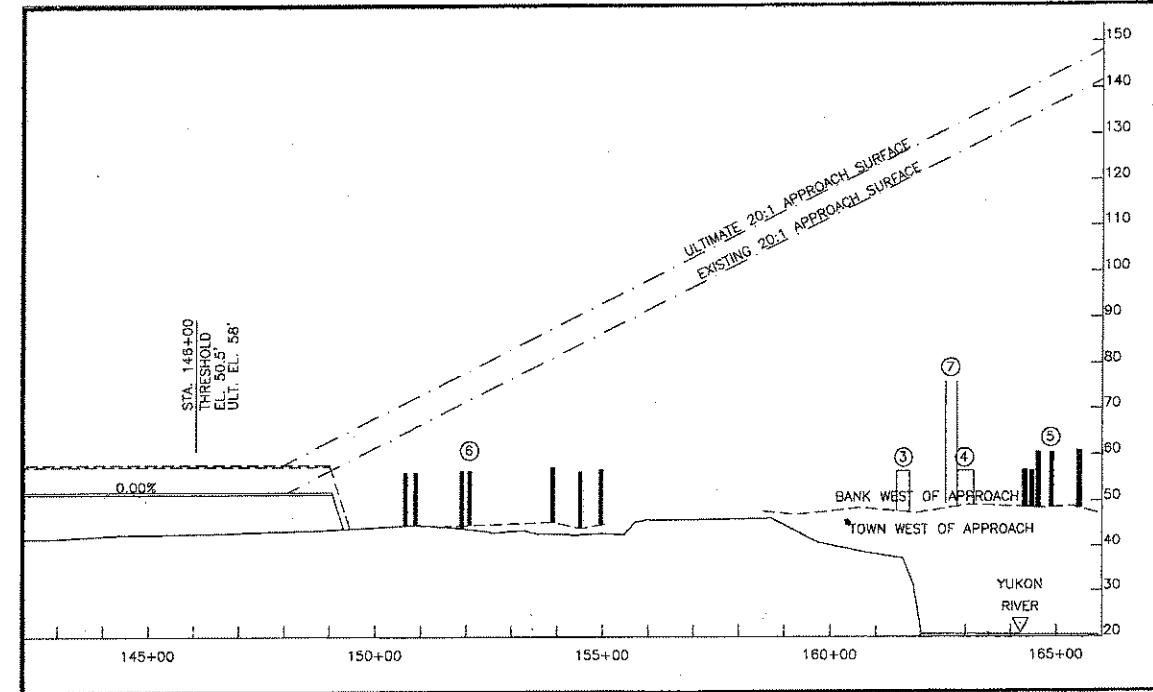


#	STRUCTURE NAME	TOP ELEV.	OBSTRUCTION MARKING (Y/N) EXISTING/ULTIMATE	REMARKS
5	MISC. BLDGS	62'±	N N	NONE; CITY OF RUSSIAN MISSION
6	SHACKS	58'±	N N	NONE; 14c1 CLAIMS

#	STRUCTURE NAME	TOP ELEV.	APPROACH SURFACE PENETRATION	PROPOSED DISPOSITION
1&2	BLUFF & TREES WEST OF APPROACH 35	215'	130'	TO BE REMOVED FOR ULTIMATE 34:1 APPROACH
3	TANKS WEST OF APPROACH 17	55'±	NONE	RELOCATION
4	TANKS WEST OF APPROACH 17	58'±	NONE	RELOCATION
5	BLDGS WEST OF APPROACH 17	62'±	NONE	NONE; CITY OF RUSSIAN MISSION
6	BLDGS EAST OF APPROACH 17	58'±	NONE	NONE; 14c1 CLAIMS
7	POWER POLES	76'±	NONE	NONE



R/W 35 APPROACH PROFILE



R/W 17 APPROACH PROFILE



DESIGN PKS
DRAWN CAT
CHECKED PDM

BY	DATE	REVISIONS

STATE OF ALASKA
DEPARTMENT OF TRANSPORTATION AND PUBLIC FACILITIES
NORTHERN REGION-DESIGN AND CONSTRUCTION-AVIATION

APPROVED *Patricia D. Miller* DATE 8/20/04
PATRICIA D. MILLER, P.E. ACTING DESIGN GROUP CHIEF

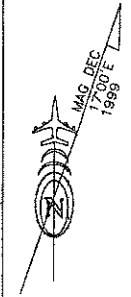
AIRPORT LAYOUT PLAN APPROVED
BY LETTER DATED: 8/20/04

J.M. [Signature]
AIRPORTS DIVISION,
ALASKAN REGION, AAL-601
AIRSPACE REVIEW #99AAL-161NRA

THIS ALP WAS PREPARED FROM AS BUILTS OF PROJECT 3-02-0248-01
DATED 12/15/03 AND SUPERCEDES THE PREVIOUS ALP APPROVED 2/14/00

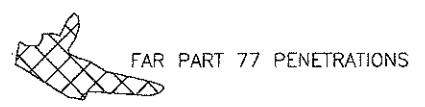
RUSSIAN MISSION AIRPORT
INNER APPROACHES
PLAN & PROFILES

SHEET 2 OF 4



#	STRUCTURE NAME	TOP ELEV.	SURFACE PENETRATION	PROPOSED DISPOSITION OF OBSTRUCTION
2	BLUFF & TREES WEST OF APPROACH 35	215'	+130'	TO BE REMOVED FOR ULTIMATE 34:1 APPROACH
8	HILLS IN HORIZONTAL SURFACE	350'	+300'	NONE
9	HILLS IN CONICAL AND HORIZONTAL SURFACES	550'	VARIES	NONE
10	HILLS IN HORIZONTAL AND TRANSITIONAL SURFACES	350'	VARIES	NONE

NOTE:
REFER TO THE INNER PORTION OF THE APPROACH SURFACE PLAN VIEW DETAILS FOR CLOSE-IN OBSTRUCTIONS.



THRESHOLD ELEVATIONS IN FEET
 PROPOSED ULTIMATE
 R/W 17 THRESHOLD ELEV. = 50.5' 58.0'
 R/W 35 THRESHOLD ELEV. = 50.5' 58.0'

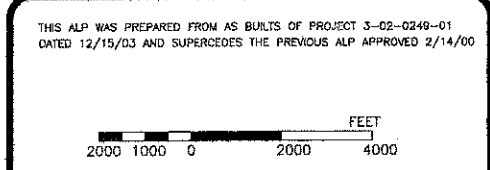
SEC. 31, T20N, R66W
 SEWARD MERIDIAN
 RUSSIAN MISSION (D-7) 1952

DESIGN_PKS
 DRAWN_CAT
 CHECKED_PDM

BY	DATE	REVISIONS

STATE OF ALASKA
 DEPARTMENT OF TRANSPORTATION AND PUBLIC FACILITIES
 NORTHERN REGION-DESIGN AND CONSTRUCTION-AVIATION
 APPROVED *[Signature]* DATE *8/20/04*
 PATRICIA D. MILLER, P.E. DESIGN GROUP CHIEF

AIRPORT LAYOUT PLAN APPROVED
 BY LETTER DATED: *8/20/04*
[Signature]
 AIRPORTS DIVISION,
 ALASKAN REGION, AAL-601
 AIRSPACE REVIEW #98AAL-161NRA



RUSSIAN MISSION AIRPORT
 AIRSPACE

SHEET
 3 OF 4

