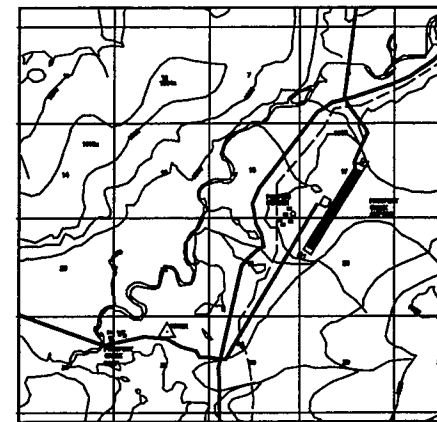


LOCATION MAP
NO SCALE



VICINITY MAP
SCALE: 1" = 1 MILE
T 23 N, R 14 W
USGS BETTLES (D-2)
FAIRBANKS MERIDIAN
1975

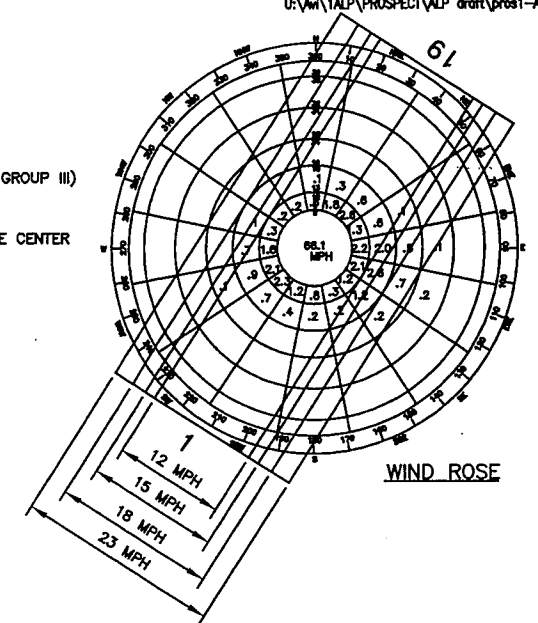


WIND DATA

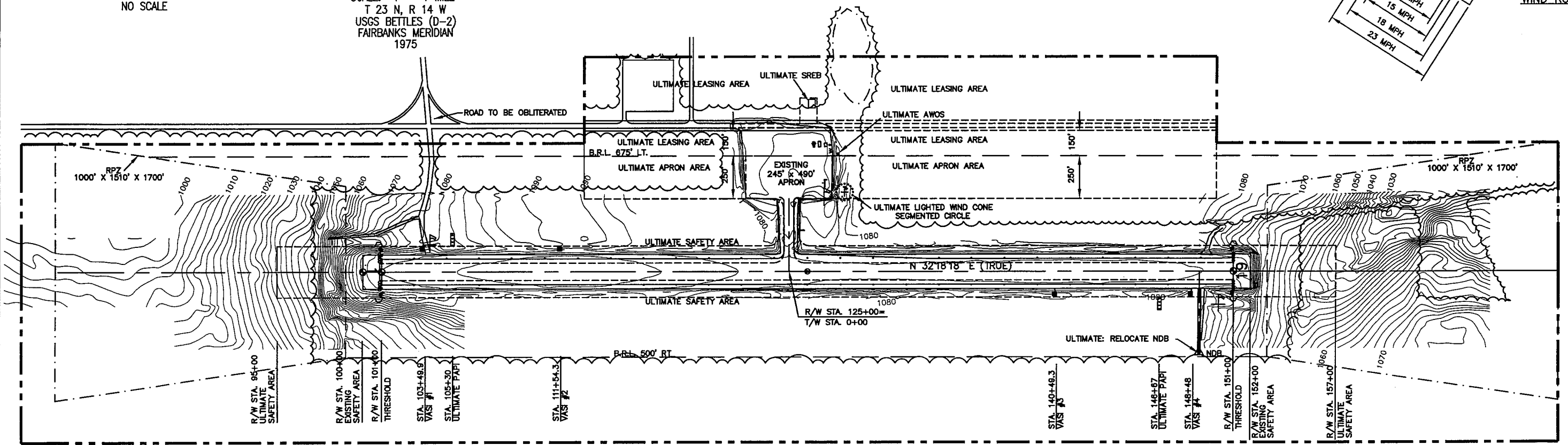
PERCENT WIND COVERAGE
RUNWAY 1-19:

12 MPH	= 91.78%
15 MPH	= 95.73%
18 MPH	= 95.23%
23 MPH	= 99.4% (DESIGN GROUP III)

WIND DATA PERIOD:
2/27/74 through 1/26/89
ENRI U OF A, ANCHORAGE, ALASKA CLIMATE CENTER



WIND ROSE



RUNWAY DATA

	RUNWAY 01-19	
	EXISTING	ULTIMATE
% WIND COVERAGE	18 MPH @ 92.23%	SAME
INSTRUMENT RUNWAY	NONE	SAME
RUNWAY SURFACE TYPE	GRAVEL	SAME
PAVEMENT STRENGTH	N/A	SAME
APPROACH SURFACES	34:1	SAME
APPROACH VISIBILITY MINIMUM	> 3/4 MILE	SAME
RUNWAY LIGHTING	MIRL	SAME
RUNWAY MARKING	NONE	SAME
VISUAL APPROACH AIDS	VASI, REL	PAPI, REL
R/W DIMENSIONS	150' X 5000'	100' X 5000'
R/W SAFETY AREA	200' X 5200'	300' X 5200'
R/W OBJECT FREE AREA (ROFA)	800' X 5200'	SAME
R/W OBSTACLE FREE ZONE (ROFZ)	400' X 5400'	SAME
T/W WIDTH	60'	SAME
T/W SAFETY AREA WIDTH	112'	118'
T/W OFA	186'	SAME

AIRPORT DATA

	EXISTING	ULTIMATE
AIRPORT ELEVATION (MSL)	1106.86'	SAME
AIRPORT REFERENCE CODE	B-II	SAME
MEAN DAILY HIGH TEMP. HOTTEST MONTH (JULY)	60°F	SAME
TAXIWAY LIGHTING	MIRL	SAME
RAMP LIGHTING	FLOODS	SAME
NAVIGATION AIDS	BEACON	BEACON, GPS
COMMUNICATION AIDS	NONE	SAME
AIRPORT REFERENCE POINT (ARP) STA. 128+00	LAT. N86°48'50.53"	LONG. W150°36'37.05"
THRESHOLD 1 STA. 101+00	LAT. N86°48'28.73"	LONG. W150°39'10.40"
THRESHOLD 19 STA. 151+00	LAT. N86°46'11.32"	LONG. W150°36'03.68"

LEGEND

	EXISTING	ULTIMATE
PROPERTY LINE	---	---
BUILDING RESTRICTION LINE (B.R.L.)	---	---
DEVELOPMENT	■	■
WIND CONE & SEGMENTED CIRCLE	⊙	⊙
WIND CONE ONLY	⊙	⊙
BUILDING	■	■
ROADWAY	---	---
FENCING	---	---
AIRPORT REFERENCE POINT	⊙	⊙
ROTATING BEACON	⊙	⊙
ANTENNA/TOWER	⊙	⊙
VASI	---	---
PAPI	---	---
SHORELINE/WATERLINE	⊙	⊙
TREELINE	---	---
THRESHOLD	---	---
OVERHEAD POWER	---	---
AWOS	---	---

NONSTANDARD CONDITIONS

ITEM	STANDARD	EXISTING	ULTIMATE
SAFETY AREA DIMENSIONS	300'x5200'	200'x5200'	300'x5200'

NOTES:

- NO OFZ OBJECT PENETRATIONS.
- NO THRESHOLD SITING SURFACE OBJECT PENETRATIONS.
- THE GEODETIC COORDINATES WERE CALCULATED FROM SURVEY CONTROL TIES TO USC & GS STATION "MILCLAY."
- DATA BASE CONTROL YEAR: NAD 83.
- THE ALASKA STATE PLANE GRID BEARING FOR RUNWAY 01-19 CENTERLINE IS N 32°18'18" E.

DESIGN	PKS		
DRAWN	EM		
CHECKED	CM		
BY	DATE	REVISIONS	

STATE OF ALASKA
DEPARTMENT OF TRANSPORTATION AND PUBLIC FACILITIES
NORTHERN REGION - DESIGN AND ENGINEERING SERVICES

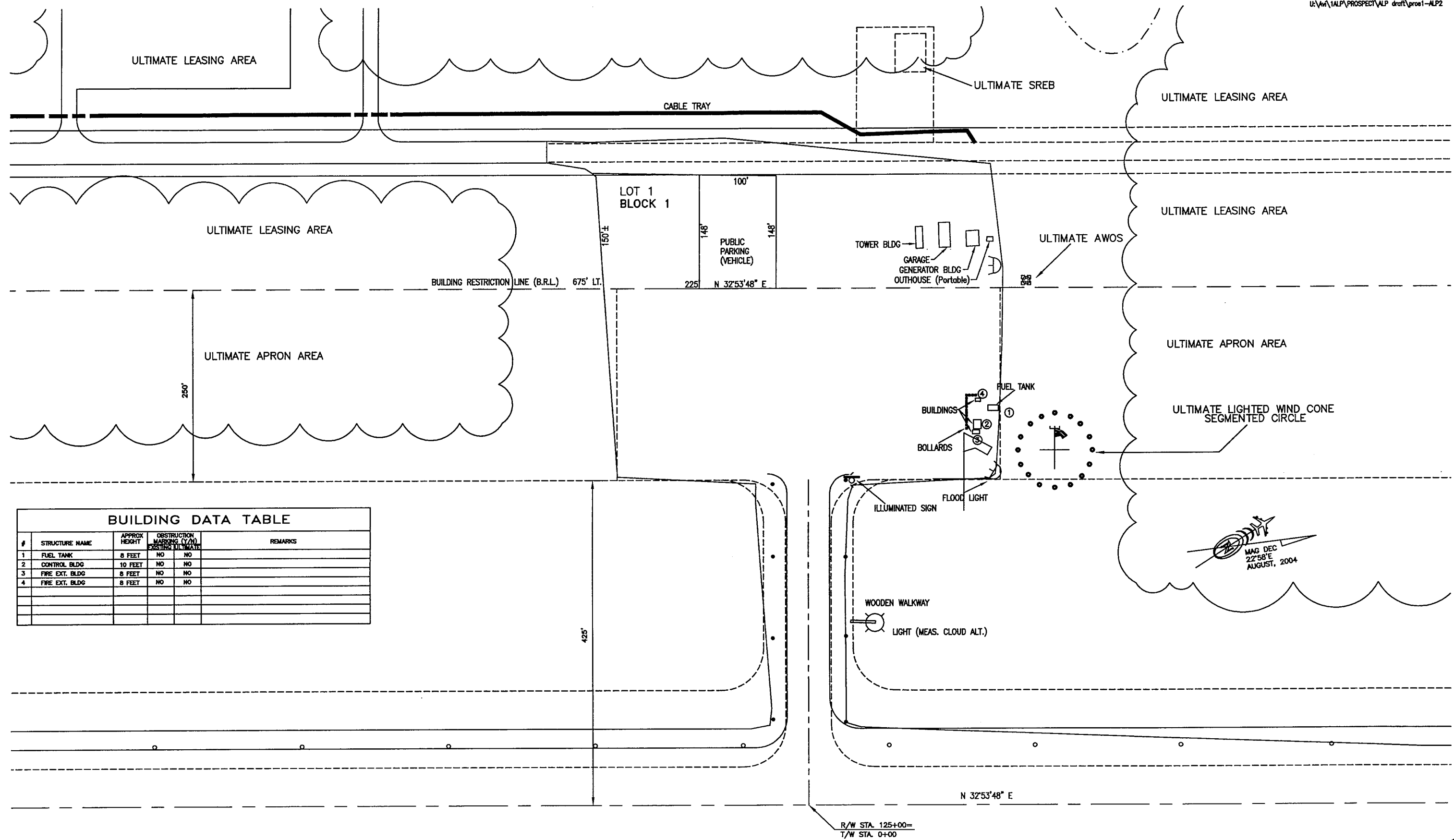
APPROVED
Patricia D. Miller
PATRICIA D. MILLER, P.E.

DATE 3/23/05
DESIGN GROUP CHIEF

AIRPORT LAYOUT PLAN APPROVED
BY LETTER DATED: 3/24/05
Matt Freeman
AIRPORTS DIVISION,
ALASKAN REGION, AAL-601
AIRSPACE REVIEW #02AAL-161NRA

THIS ALP WAS PREPARED FROM THE PROPERTY PLAN DATED 11/2/94 AND FROM THE ALYESKA PIPELINE PRELIMINARY DWGS DATED 2/4/92, 2/28/92, 3/3/92 AND FILE # 275A0292 DATED 3/12/92.

PROSPECT CREEK AIRPORT
AIRPORT LAYOUT PLAN



BUILDING DATA TABLE

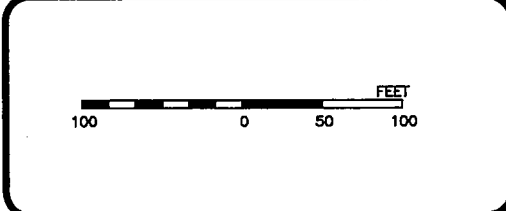
#	STRUCTURE NAME	APPROX HEIGHT	OBSTRUCTION MARKING (Y/N) EXISTING/ULTIMATE	REMARKS
1	FUEL TANK	8 FEET	NO NO	
2	CONTROL BLDG	10 FEET	NO NO	
3	FIRE EXT. BLDG	8 FEET	NO NO	
4	FIRE EXT. BLDG	8 FEET	NO NO	

DESIGN PKS
 DRAWN EJM
 CHECKED OML

BY	DATE	REVISIONS

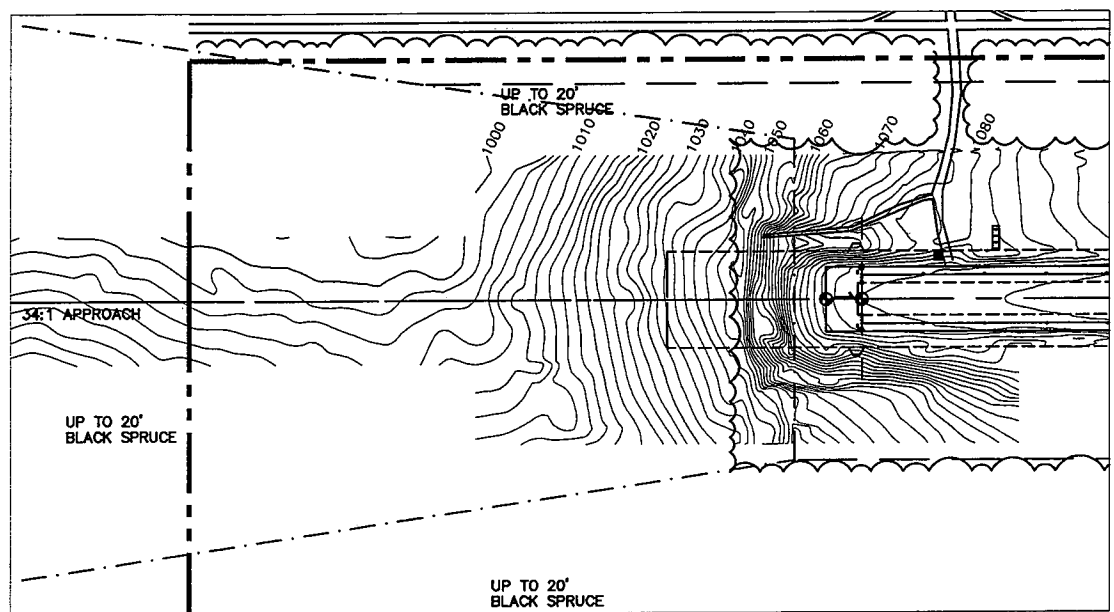
STATE OF ALASKA
 DEPARTMENT OF TRANSPORTATION AND PUBLIC FACILITIES
 NORTHERN REGION
 APPROVED Patricia D. Miller DATE 3/23/05
 PATRICIA D. MILLER, P.E. DESIGN GROUP CHIEF

AIRPORT LAYOUT PLAN APPROVED
 BY LETTER DATED: 3/24/05
Matt Freeman
 AIRPORTS DIVISION,
 ALASKAN REGION, AAL-601
 AIRSPACE REVIEW #02AAL-161NRA

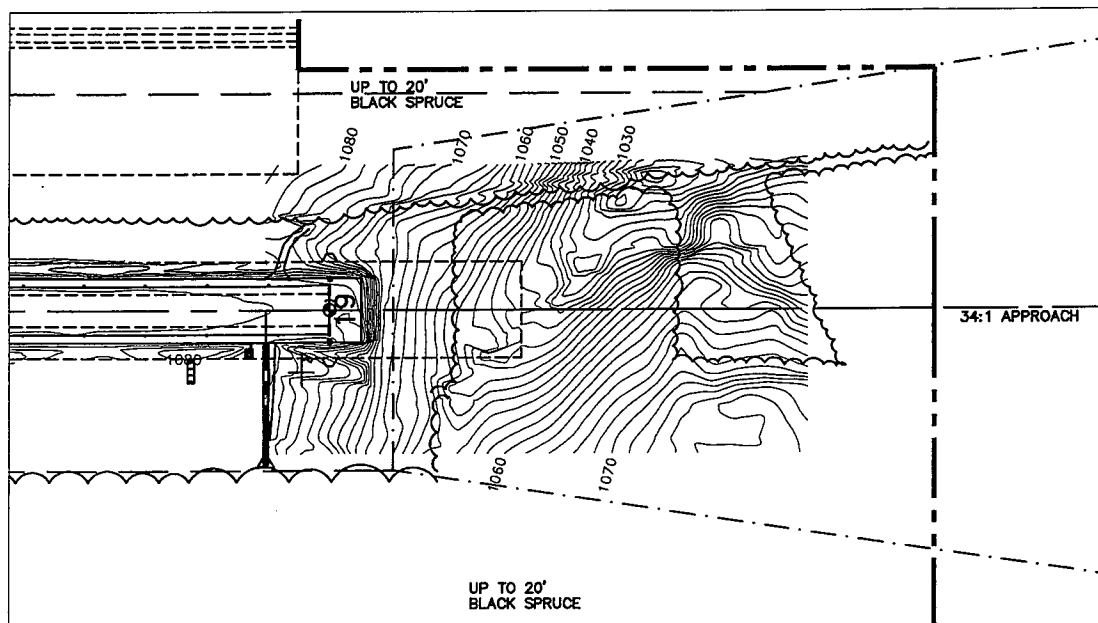
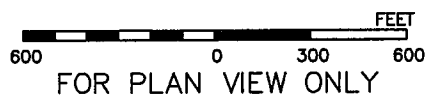


PROSPECT CREEK AIRPORT
 TERMINAL PLAN

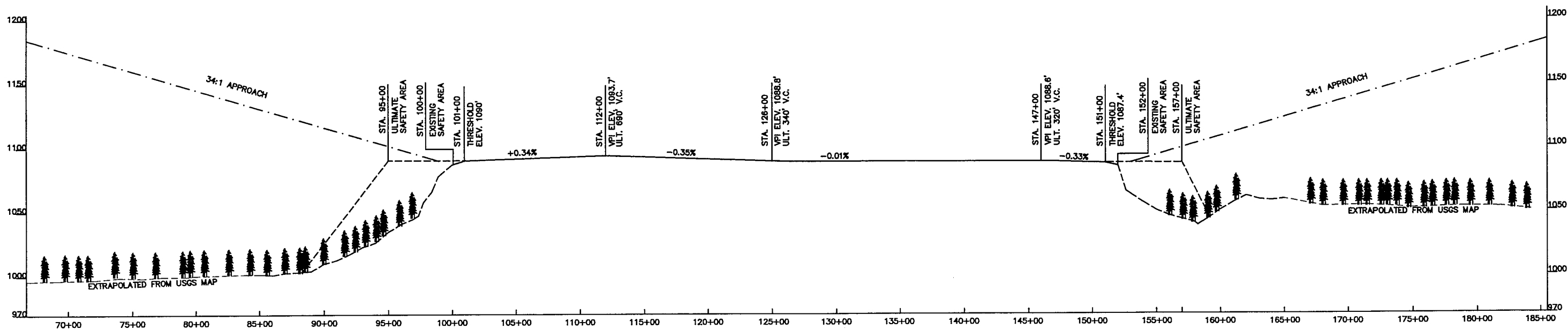
SHEET
 2 OF 4



APPROACH 01 PLAN



APPROACH 19 PLAN



RUNWAY 01-19 PROFILE

DESIGN PKS
 DRAWN EJM
 CHECKED CM

BY	DATE	REVISIONS

STATE OF ALASKA
 DEPARTMENT OF TRANSPORTATION AND PUBLIC FACILITIES
 NORTHERN REGION - DESIGN AND ENGINEERING SERVICES

APPROVED
Patricia D. Miller
 PATRICIA D. MILLER, P.E.

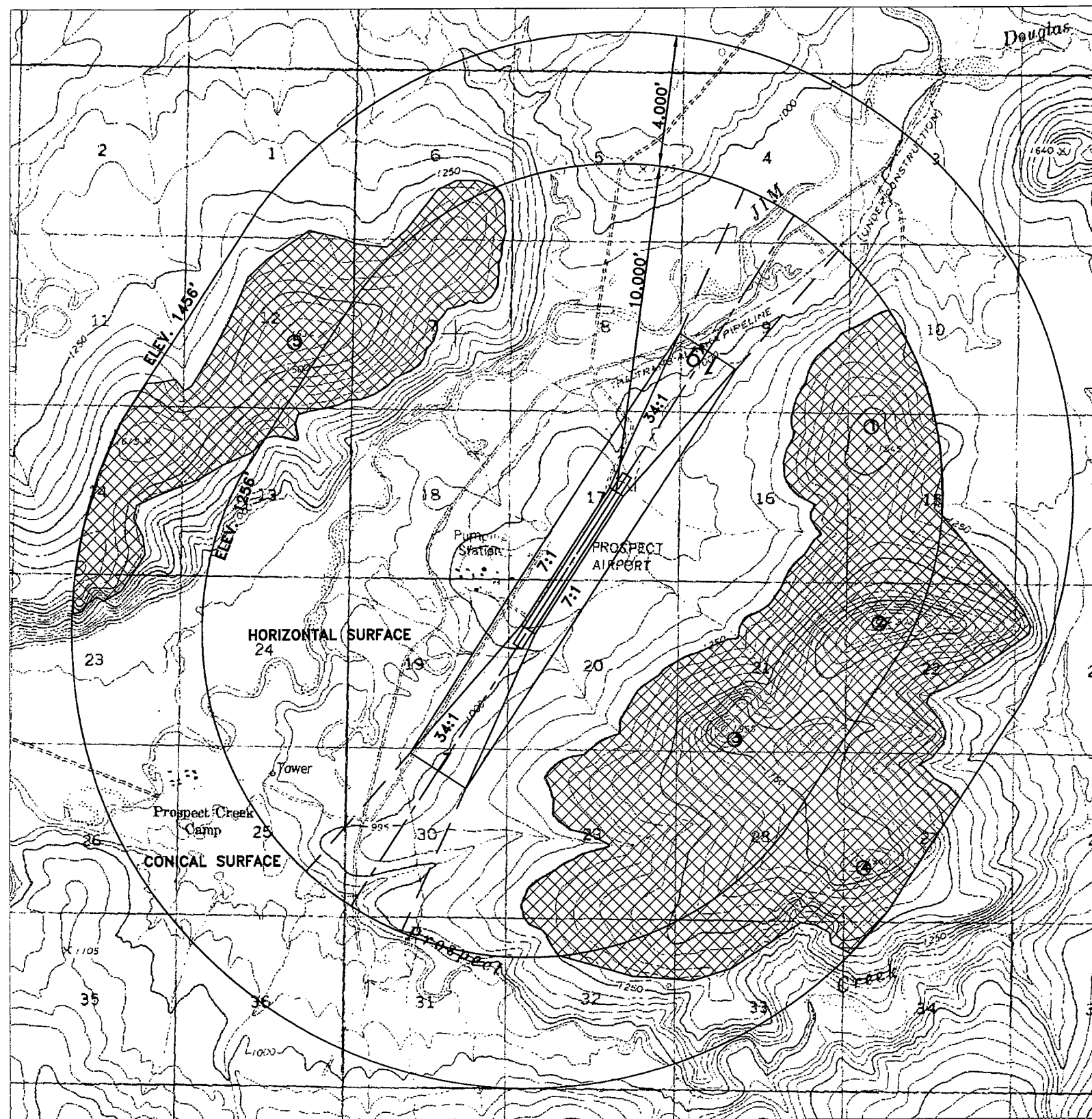
DATE 9/29/05
 DESIGN GROUP CHIEF

AIRPORT LAYOUT PLAN APPROVED
 BY LETTER DATED: 9/24/05
Matt Freeman

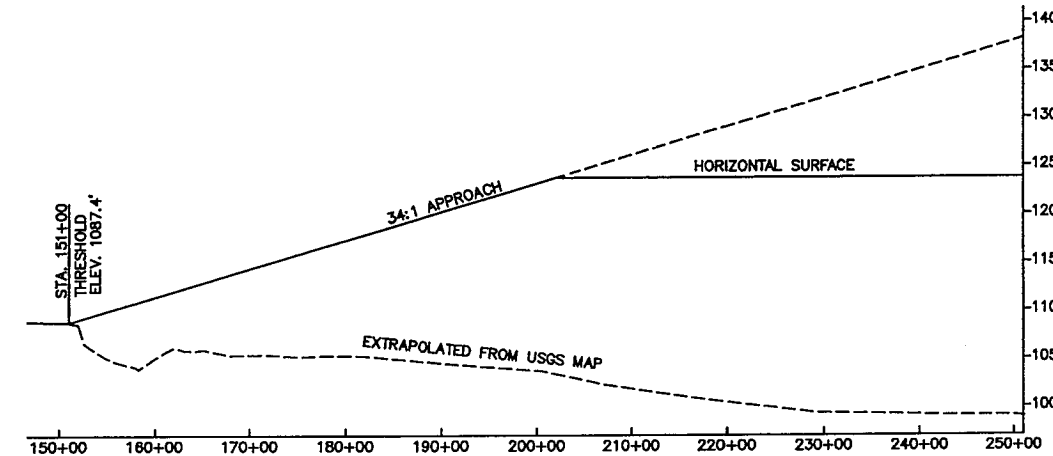
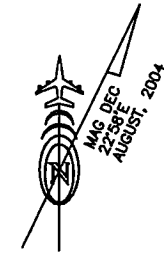
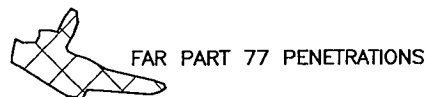
AIRPORTS DIVISION,
 ALASKAN REGION, AAL-601
 AIRSPACE REVIEW #02AAL-161NRA

PROSPECT CREEK AIRPORT
 INNER PORTION OF THE
 APPROACH SURFACES DRAWING

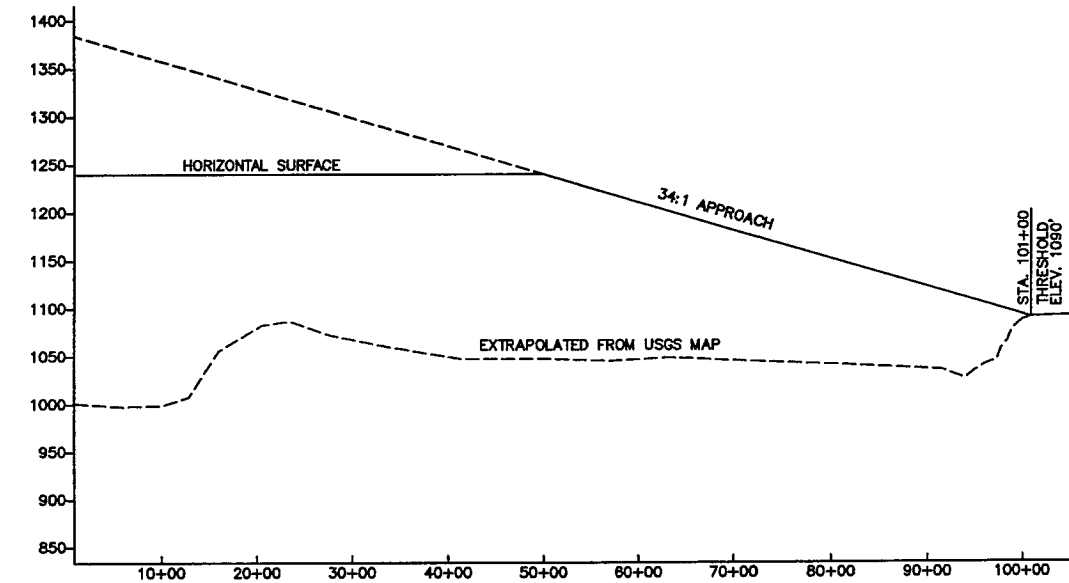
SHEET
3 OF
4



AIRSPACE DRAWING
 SEC. 17 & 20, T 23 N, R 14 W, FM, 1975
 USGS BATTLES (D-2)
 SCALE: 1" = 2000'



R/W 19 COMPOSITE APPROACH PROFILE



R/W 01 COMPOSITE APPROACH PROFILE

OBSTRUCTION TABLE				
#	STRUCTURE NAME	TOP ELEV.	APPROACH SURFACE PENETRATION	PROPOSED DISPOSITION OF OBSTRUCTION
1	HILL IN HORIZONTAL SURFACE	1545'	+290	NONE
2	HILL IN HORIZONTAL SURFACE	2025'	+770	NONE
3	HILL IN HORIZONTAL SURFACE	1955'	+700	NONE
4	HILL IN CONICAL SURFACE	1960'	+577	NONE
5	HILL IN CONICAL SURFACE	1634'	+387	NONE

DESIGN: PKS

DRAWN: EAM

CHECKED: CM

BY	DATE	REVISIONS

STATE OF ALASKA
 DEPARTMENT OF TRANSPORTATION AND PUBLIC FACILITIES
 NORTHERN REGION - DESIGN AND ENGINEERING SERVICES

APPROVED: *Patricia D. Miller* DATE: 3/23/05
 PATRICIA D. MILLER, P.E. DESIGN GROUP CHIEF

AIRPORT LAYOUT PLAN APPROVED
 BY LETTER DATED: 3/24/05
Matt Freeman

AIRPORTS DIVISION,
 ALASKAN REGION, AAL-601
 AIRSPACE REVIEW #02AAL-161NRA

PROSPECT CREEK AIRPORT
 APPROACH COMPOSITE PROFILES
 AND AIRSPACE

SHEET
 4 OF 4