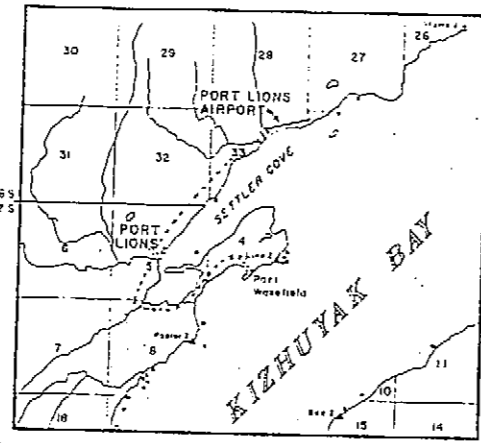
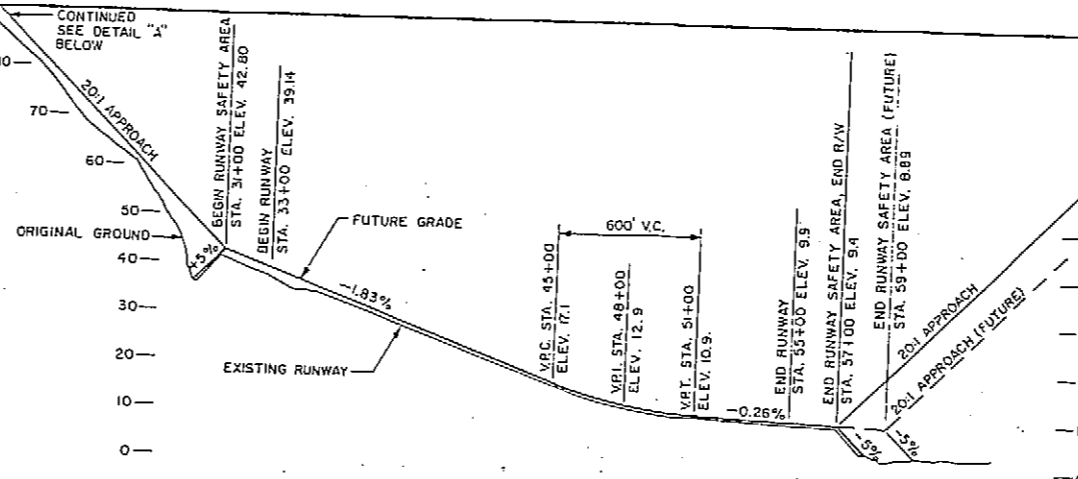
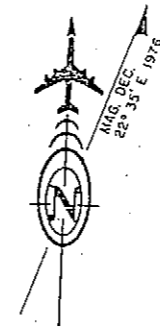


LOCATION MAP



VICINITY MAP

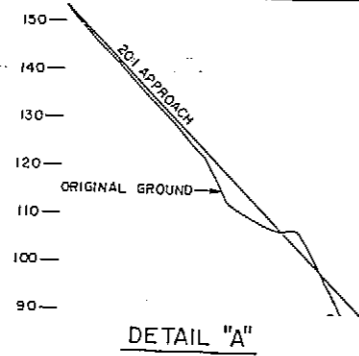


RUNWAY PROFILE

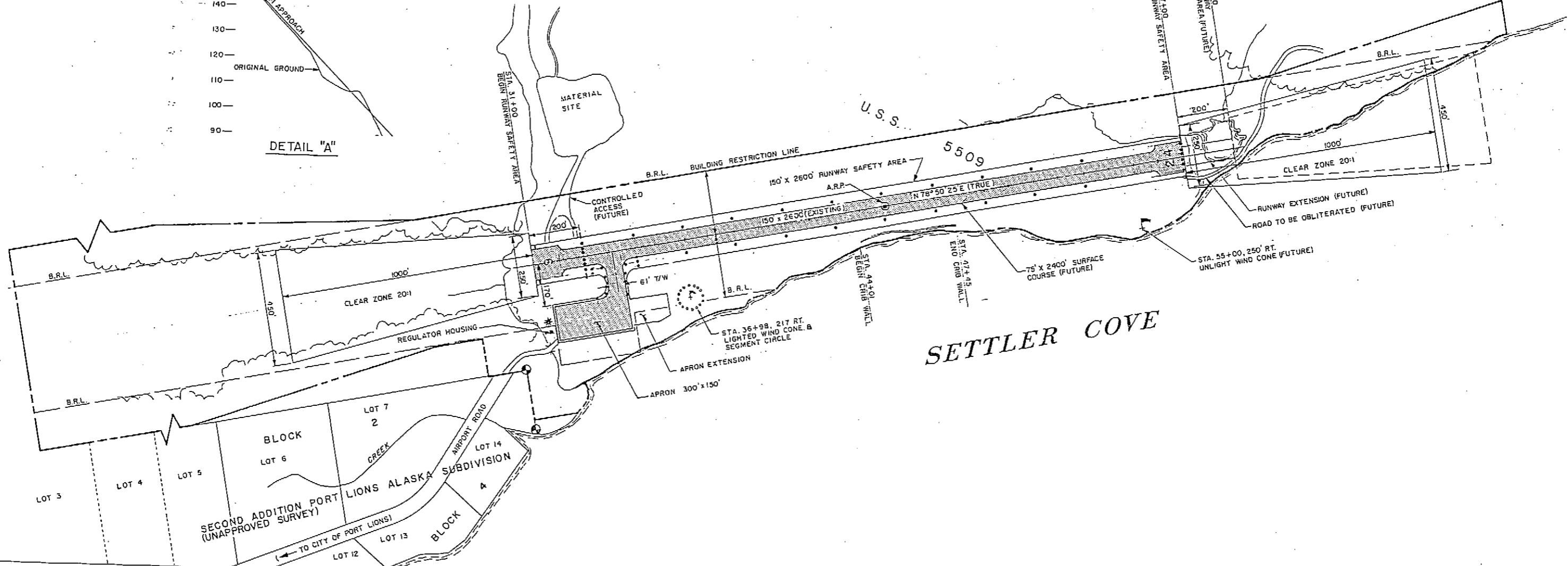
SCALE: HORIZONTAL 1" = 400'  
VERTICAL 1" = 20'

WIND DATA

NO WIND DATA AVAILABLE. TOPOGRAPHY PREVENTS ANY REALIGNMENT OF RUNWAY.



DETAIL "A"



BASIC DATA TABLE				
RUNWAY DATA 6-24				
	RUNWAY 10-28		RUNWAY	
	EXISTING	FUTURE	EXISTING	FUTURE
EFFECTIVE GRADIENT	1.28%	1.27%		
1/2 WIND COVERAGE	NOT AVAIL.	NOT AVAIL.		
INSTRUMENT RUNWAY	NONE	NONE		
PAVEMENT SURFACE	GRAVEL	GRAVEL		
PAVEMENT STRENGTH	NOT AVAIL.	NOT AVAIL.		
APPROACH SURFACES	20H	20H		
RUNWAY LIGHTING	M.I.	M.I.		
RUNWAY MARKING	NONE	NONE		
RUNWAY DIMENSION	75' x 2130'	75' x 2350'		
RUNWAY SAFETY AREA	150' x 2600'	150' x 2600'		
CATEGORY	3U I	3U I		

BASIC DATA TABLE		
AIRPORT DATA		
	EXISTING	FUTURE
AIRPORT ELEVATION	42.80'	
AIRPORT REFERENCE POINT (A.R.P.)	LOT 137° 53' 09" N	
	LONG. 152° 30' 37" W	
TAXIWAY LIGHTING	N.I.	N.I.
RAMP LIGHTING	NONE	FLOOD
NORMAL MAX. TEMP.		52.6°

LEGEND		
	EXISTING	FUTURE
PROPERTY LINE	---	---
BUILDING RESTRICTION LINE (B.R.L.)	---	---
AVIGATION AND HAZARD EASEMENT	---	---
BUILDINGS	■	■
AIRPORT REFERENCE POINT	●	●
WIND CONE OR SEGMENTED CIRCLE	---	---
RUNWAY BOUNDARY MARKER	---	---
ROADWAYS	---	---
STREAK	---	---
TREE LINE	---	---
ROCKY BEACH	---	---
SHORE LINE (MLW)	---	---
CRIB WALL	---	---
LIGHTING MED. INTENSITY	---	---
SURFACE COURSE	---	---
RUNWAY EXTENSION	---	---

BY	DATE	CHANGE
JJD	12-14-73	CORRECT R/W DES. & LENGTH
JLH	8-8-85	AS-BUILT
WJ	1-17-84	REVISED TRACT I BOUNDARY
	4-26-83	F.A.A. APPROVED

STATE OF ALASKA  
DEPARTMENT OF TRANSPORTATION  
AND PUBLIC FACILITIES  
AVIATION DESIGN AND CONSTRUCTION CENTRAL REGION

PORT LIONS AIRPORT  
AIRPORT LAYOUT PLAN

DESIGNED BY: *Tommy Gene Heinrich*  
TOMMY GENE HEINRICH, P.E. CHIEF DESIGN ENGINEER

APPROVED BY: *Brooks H. Wade*  
BROOKS H. WADE, P.E. EASTERN DISTRICT ENGINEER

SCALE: 1" = 200'

DATE: 4-11-83

SHEET 1 OF 1