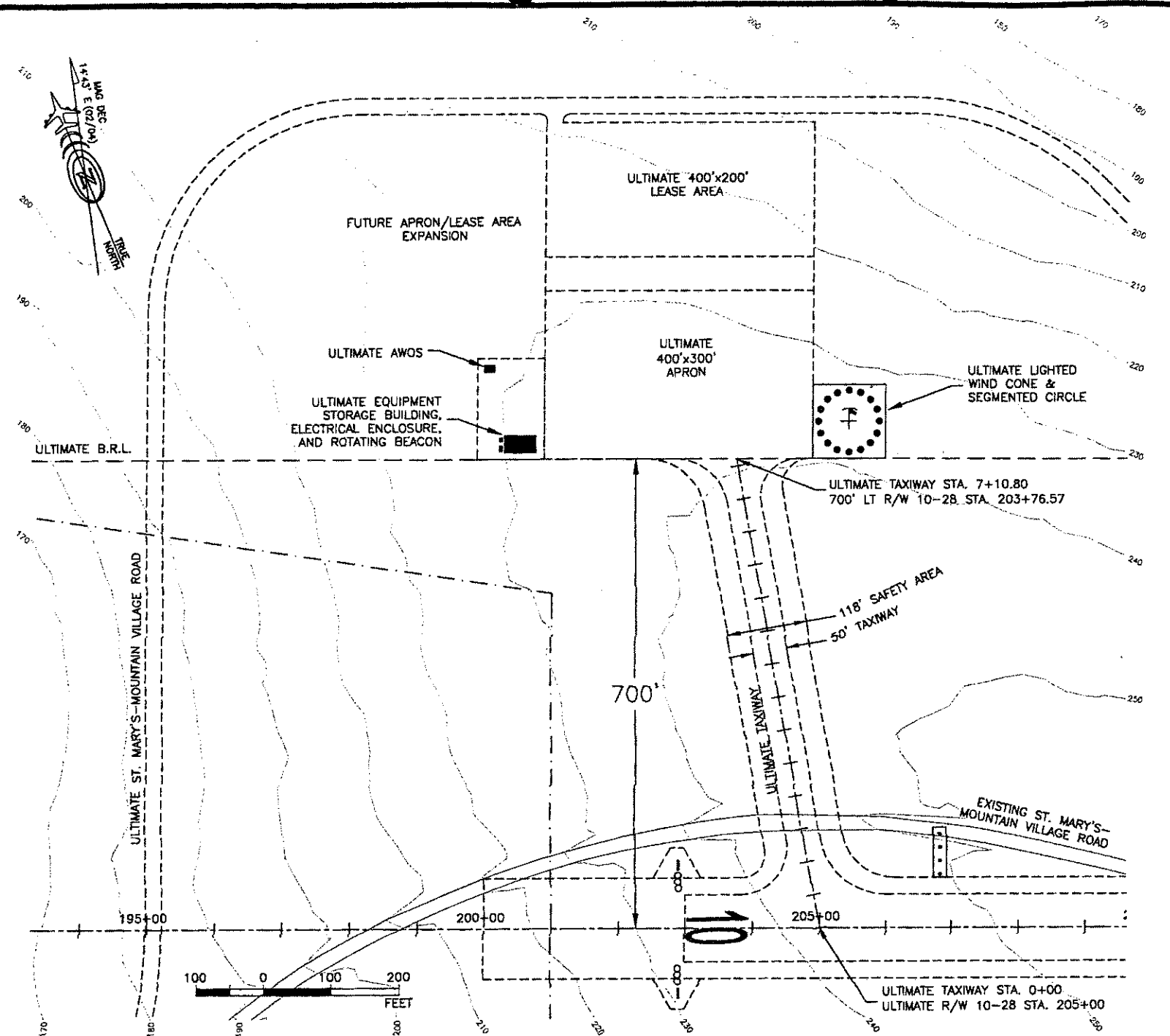


EXISTING TERMINAL AREA



ULTIMATE TERMINAL AREA

STRUCTURE	TOP ELEV (NAVD 88)	SURFACE PENETRATION	DISPOSITION
1) EXISTING AWOS	340.0'	27'	TO BE RELOCATED
2) EXISTING EQUIPMENT STORAGE BUILDING	335.8'	24'	TO BE RELOCATED
3) EXISTING TRAILER	332.7'	18'	TO BE RELOCATED

HORIZONTAL CONTROL: NAD 83

NOTE: EXISTING APRON, BUILDINGS, AND STRUCTURES TO BE REMOVED. ACCESS ROAD TO NEW WIND CONE TO BE ADDED FROM R/W 10-28.

ITEM	EXISTING (ABB)	ULTIMATE
TAXIWAY WIDTH	35'	50'
TAXIWAY SAFETY AREA WIDTH	80'	118'
TAXIWAY OBJECT FREE AREA	131'	188'
TAXIWAY LENGTH	559'	710.00'

NOTE: DESIGN GROUP III WILL BE USED FOR ULTIMATE TAXIWAY

DESIGN BY	
DRAWN BY	8/05
CHECKED BY	
DATE	5/21/04
FAA APPROVED	
REVISIONS	

STATE OF ALASKA
 DEPARTMENT OF TRANSPORTATION AND PUBLIC FACILITIES
 NORTHERN REGION

APPROVED
Patricia D. Miller
 PATRICIA D. MILLER, P.E.

DATE 5/14/04
 DESIGN GROUP CHIEF

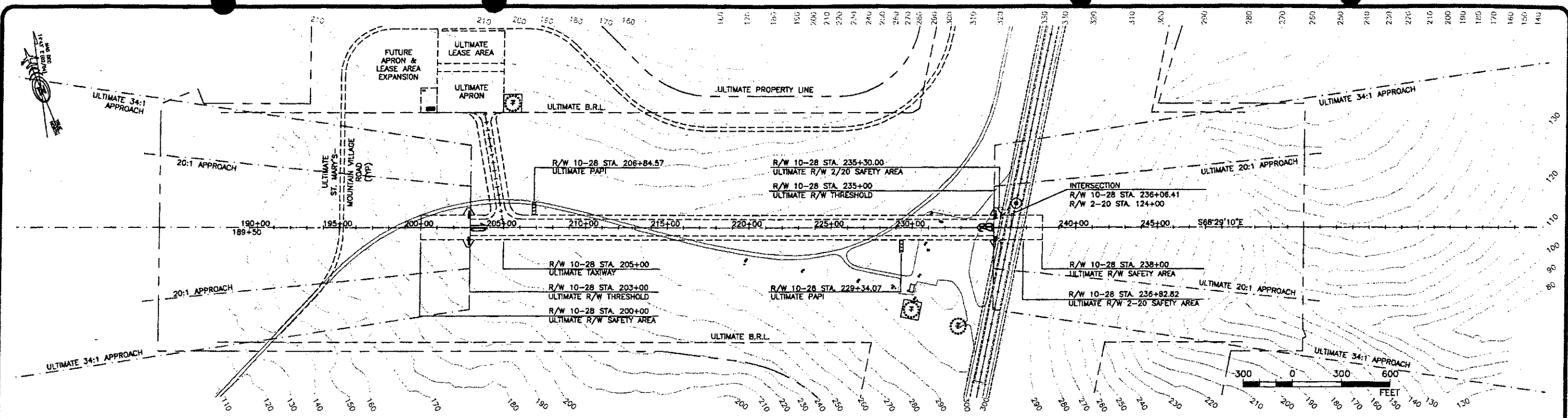
AIRPORT LAYOUT PLAN APPROVED
 BY LETTER DATED: 5/21/04

John T. Lovett
 AIRPORTS DIVISION,
 ALASKAN REGION, AAL-610
 AIRSPACE REVIEW # 01AAL-229NRA

PLANS DEVELOPED BY
 MACTEC
 ENGINEERING AND CONSULTING, Inc.

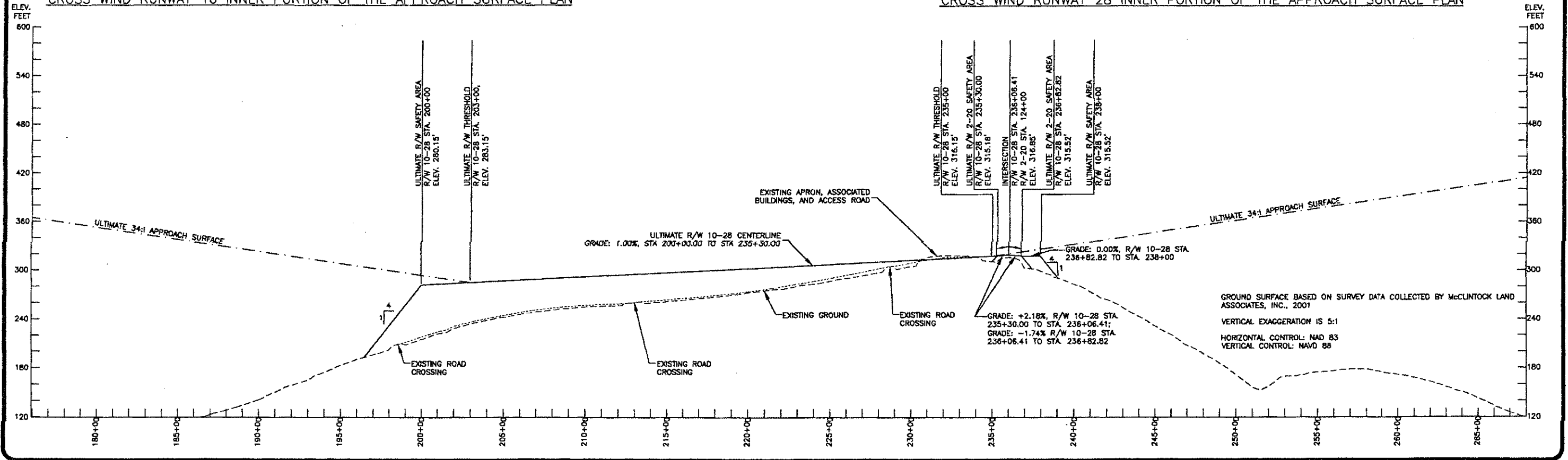
MOUNTAIN VILLAGE AIRPORT
 TERMINAL PLAN

SHEET
 2 OF
 6



CROSS WIND RUNWAY 10 INNER PORTION OF THE APPROACH SURFACE PLAN

CROSS WIND RUNWAY 28 INNER PORTION OF THE APPROACH SURFACE PLAN



DESIGN	KV
DRAWN	JK/SV
CHECKED	

BY	DATE	REVISIONS
	5/21/04	FAA APPROVED

STATE OF ALASKA
DEPARTMENT OF TRANSPORTATION AND PUBLIC FACILITIES
NORTHERN REGION

APPROVED
Patricia D. Miller
PATRICIA D. MILLER, P.E.

DATE 5/14/04
DESIGN GROUP CHIEF

AIRPORT LAYOUT PLAN APPROVED
BY LETTER DATED: 5/21/04

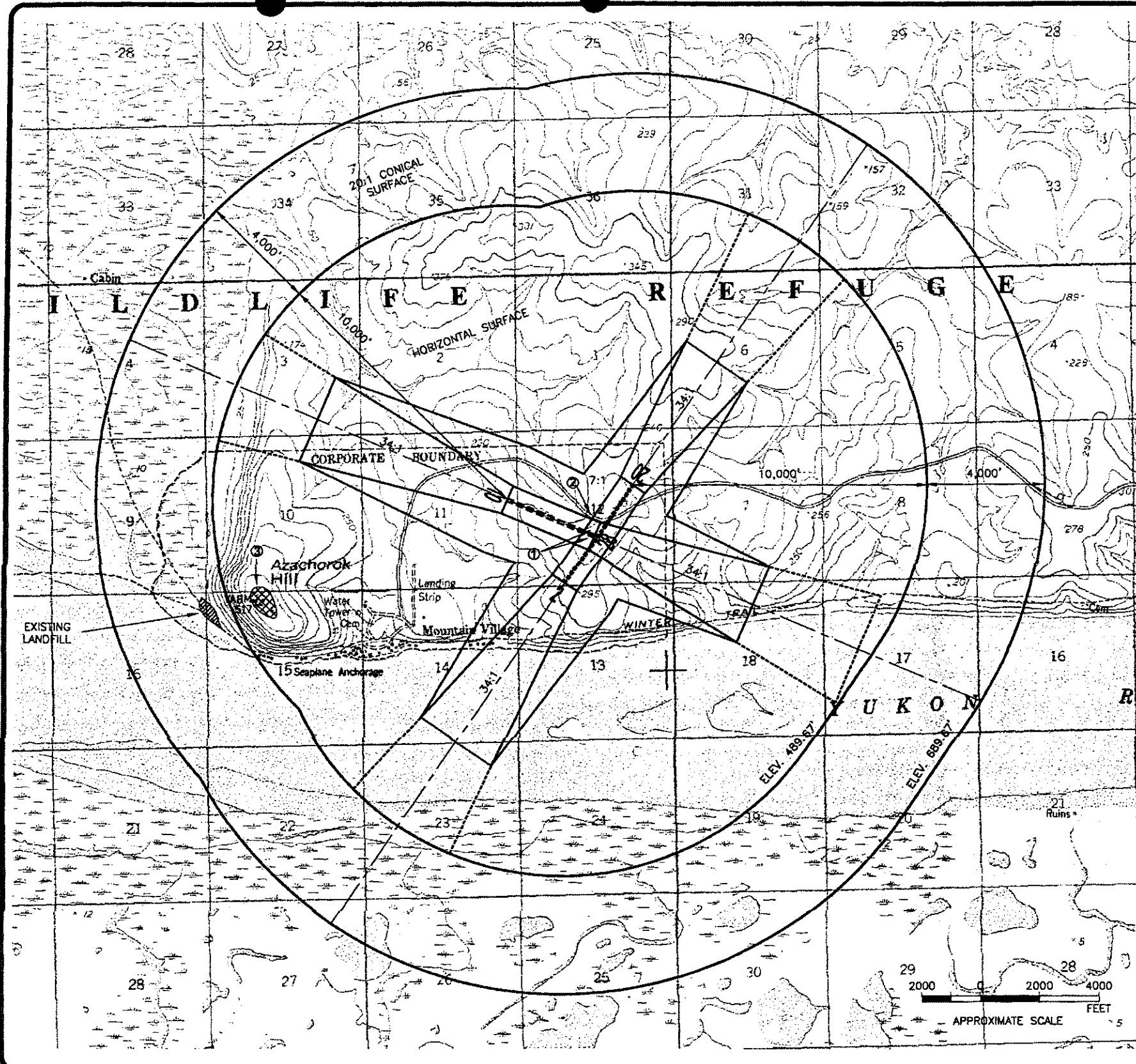
s/ John J. Lovett

AIRPORTS DIVISION,
ALASKAN REGION, AAL-610
AIRSPACE REVIEW # 01AAL-229NRA

PLANS DEVELOPED BY
MACTEC
ENGINEERING AND CONSULTING, Inc.

MOUNTAIN VILLAGE AIRPORT
CROSS WIND RUNWAY 10-28
INNER PORTION OF THE
APPROACH SURFACES
PLAN & PROFILE

SHEET
4
OF
6



FAR PART 77 OBSTRUCTIONS							
#	OBSTRUCTION	LOCATION	TOP ELEV.	R/W C/L ELEV.	SURFACE PENETRATION	SURFACE	DISPOSITION
1	EXISTING APRON, ASSOCIATED BUILDINGS & STRUCTURES, TAXIWAYS, ROADWAYS	R/W 10-28 STA. 225+00-238+00.	340.0	313.0	27'	PRIMARY	RELOCATE
2	ST. MARY'S-MOUNTAIN VILLAGE ROAD	R/W 10-28 STA. 233+50-235+00, 500-750 LT	311.8	313.04	13.28'	7:1	RELOCATE
3	AZACHOROK HILL	WEST OF RUNWAYS	515.3'	488.67'	25.63'	HORIZONTAL	NO ACTION

SECTION 12, T23N, R79W
 USGS KWIGLUK (A-4)
 SEWARD MERIDIAN
 1952

THRESHOLD 2 ELEVATION 298.99'
 THRESHOLD 20 ELEVATION 339.67'
 THRESHOLD 10 ELEVATION 283.04'
 THRESHOLD 28 ELEVATION 315.04'

NOTE: THE MOST CURRENT USGS MAP FOR THIS AREA, 1952, DOES NOT SHOW THE EXISTING AIRPORT AND THE CURRENT ST. MARY'S-MOUNTAIN VILLAGE ROAD LOCATIONS.

DESIGN
 DRAWN
 CHECKED

BY	DATE	REVISIONS

5/21/04 FAA APPROVED

STATE OF ALASKA
 DEPARTMENT OF TRANSPORTATION AND PUBLIC FACILITIES
 NORTHERN REGION

APPROVED
s/ Patricia D. Miller
 PATRICIA D. MILLER, P.E.

DATE 5/19/04
 DESIGN GROUP CHIEF

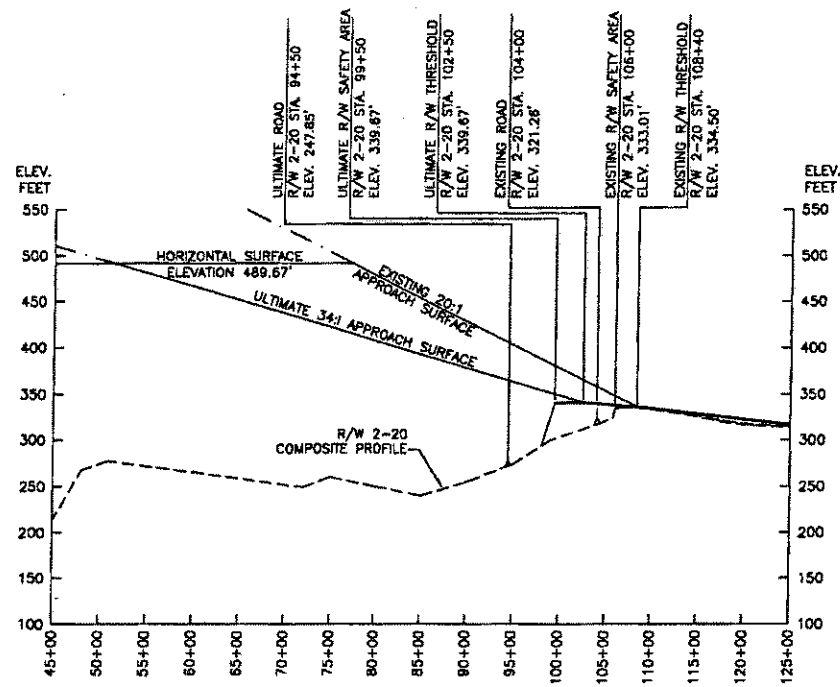
AIRPORT LAYOUT PLAN APPROVED
 BY LETTER DATED: 5/21/04

s/ John T. Lovett
 AIRPORTS DIVISION,
 ALASKAN REGION, AAL-610
 AIRSPACE REVIEW # 01AAL-229NRA

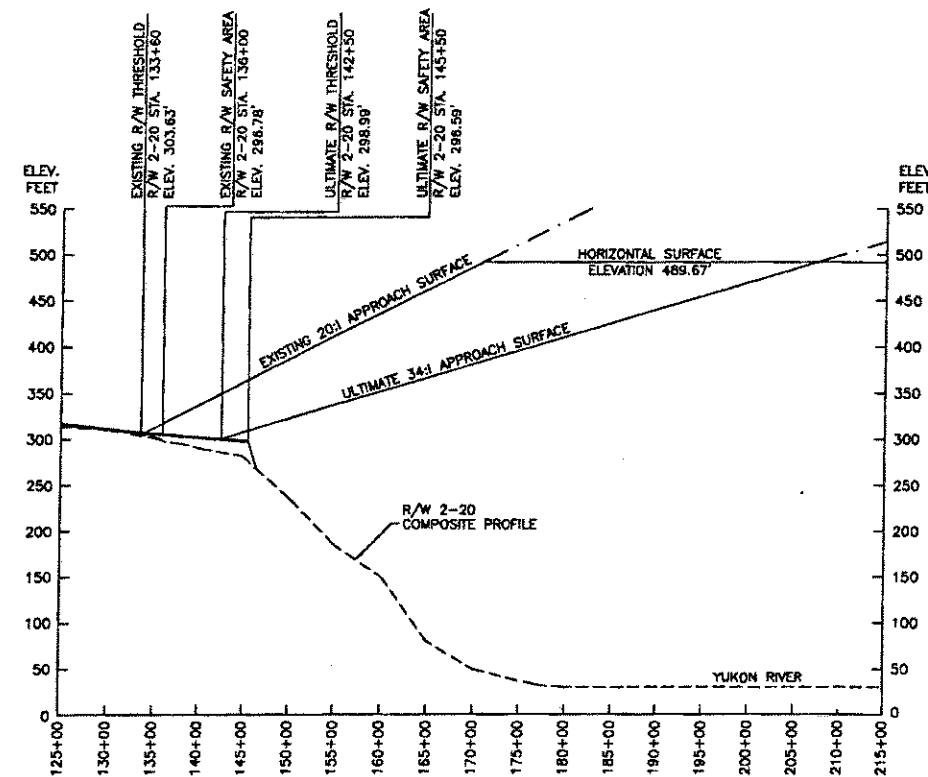
PLANS DEVELOPED BY
 MACTEC
 ENGINEERING AND CONSULTING, Inc.

MOUNTAIN VILLAGE AIRPORT
 AIRSPACE

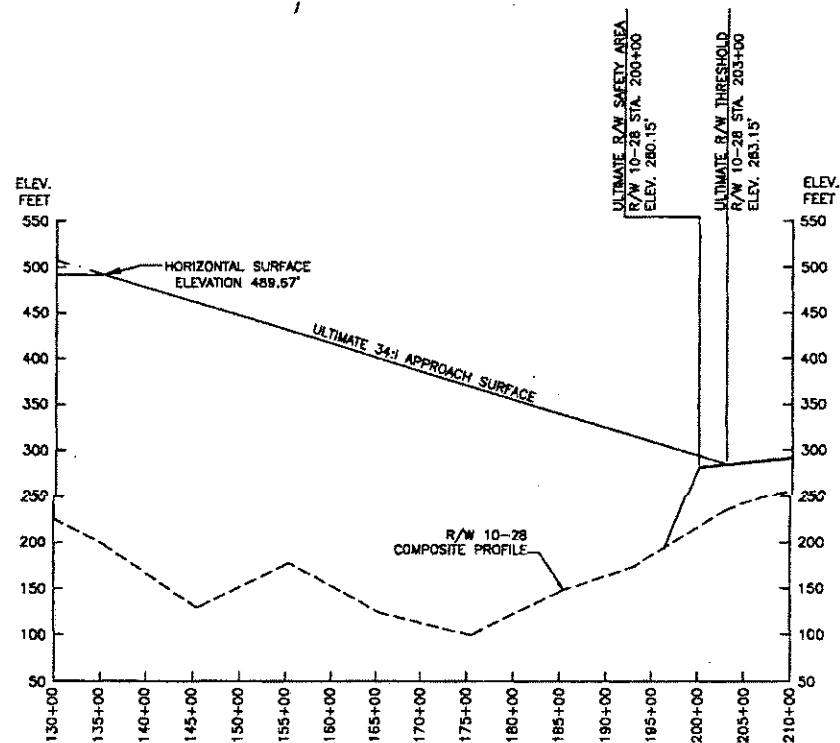
SHEET
 5
 OF
 6



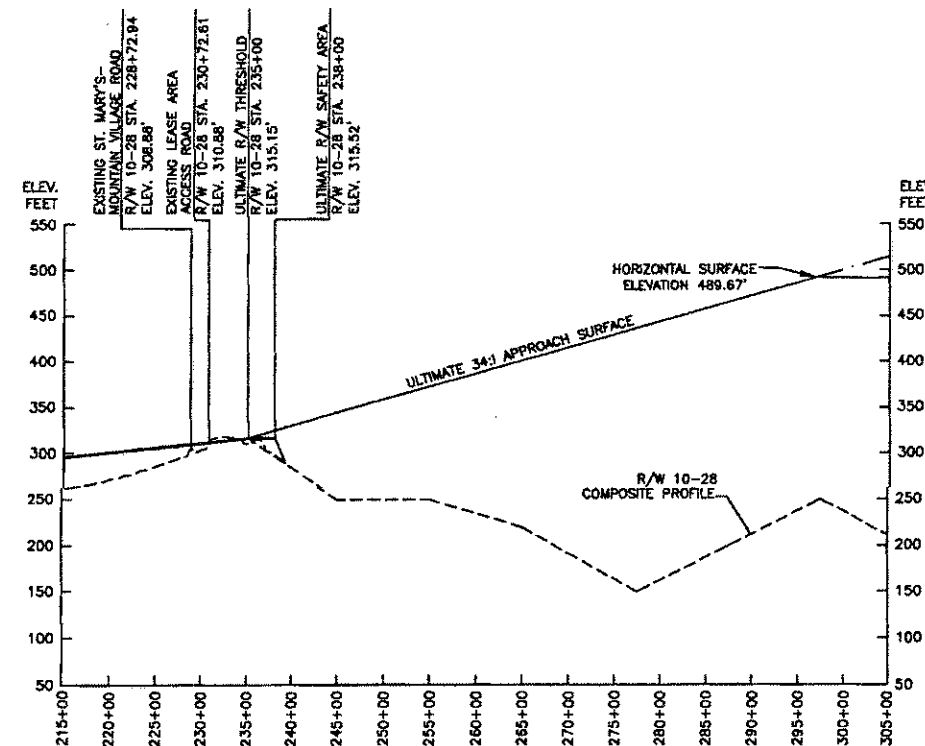
RUNWAY 20 COMPOSITE APPROACH PROFILE



RUNWAY 2 COMPOSITE APPROACH PROFILE



RUNWAY 10 COMPOSITE APPROACH PROFILE



RUNWAY 28 COMPOSITE APPROACH PROFILE

VERTICAL EXAGGERATION IS 10:1
NOTE: COMPOSITE GROUND SURFACE ELEVATIONS EXTRAPOLATED FROM SURVEY DATA AND USGS MAP.

DESIGN BY	
DRAWN BY	
CHECKED	
BY DATE	5/21/04
REVISIONS	FAA APPROVED

STATE OF ALASKA
DEPARTMENT OF TRANSPORTATION AND PUBLIC FACILITIES
NORTHERN REGION

APPROVED
Patricia D. Miller
PATRICIA D. MILLER, P.E.

DATE 5/19/04
DESIGN GROUP CHIEF

AIRPORT LAYOUT PLAN APPROVED
BY LETTER DATED: 5/21/04

s/ John T. Lovett
AIRPORTS DIVISION,
ALASKAN REGION, AAL-610
AIRSPACE REVIEW # 01AAL-229NRA

PLANS DEVELOPED BY
MACTEC
ENGINEERING AND CONSULTING, Inc.

MOUNTAIN VILLAGE AIRPORT
COMPOSITE APPROACH
PROFILES

SHEET
6 OF 6