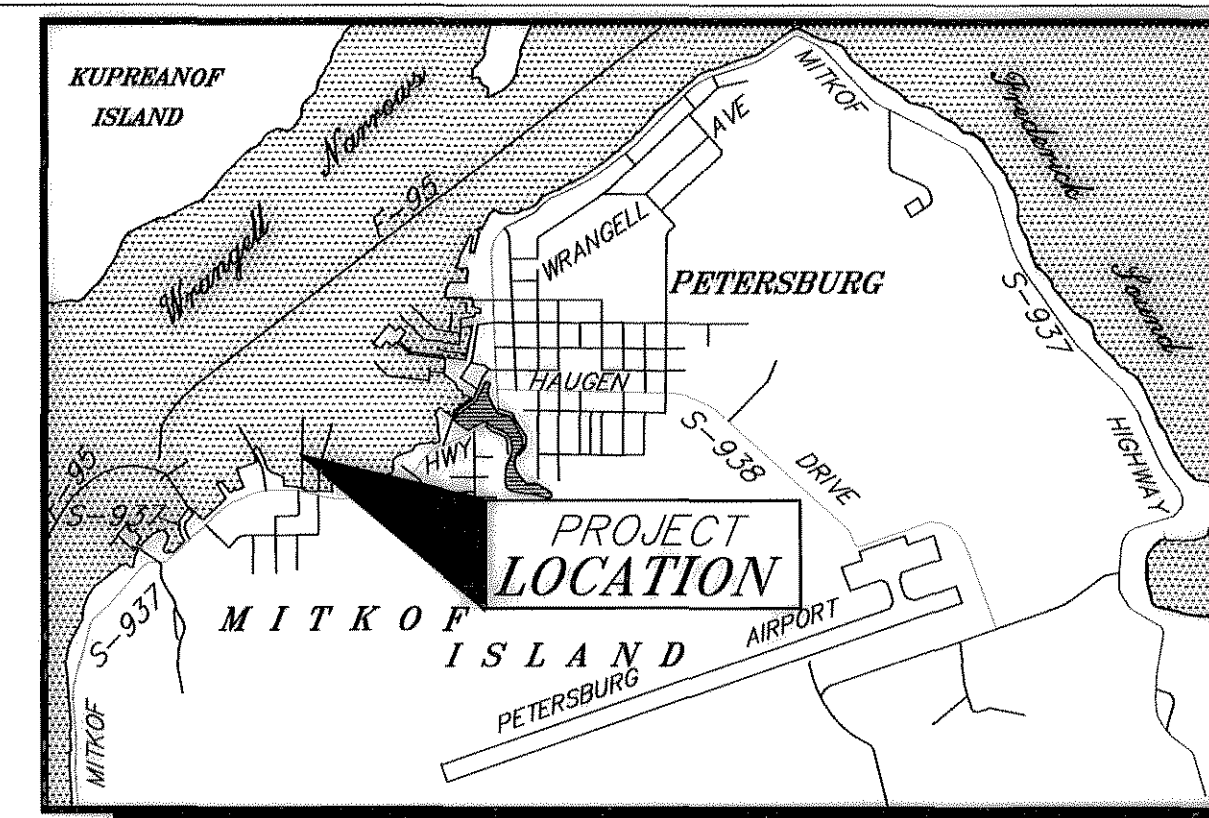
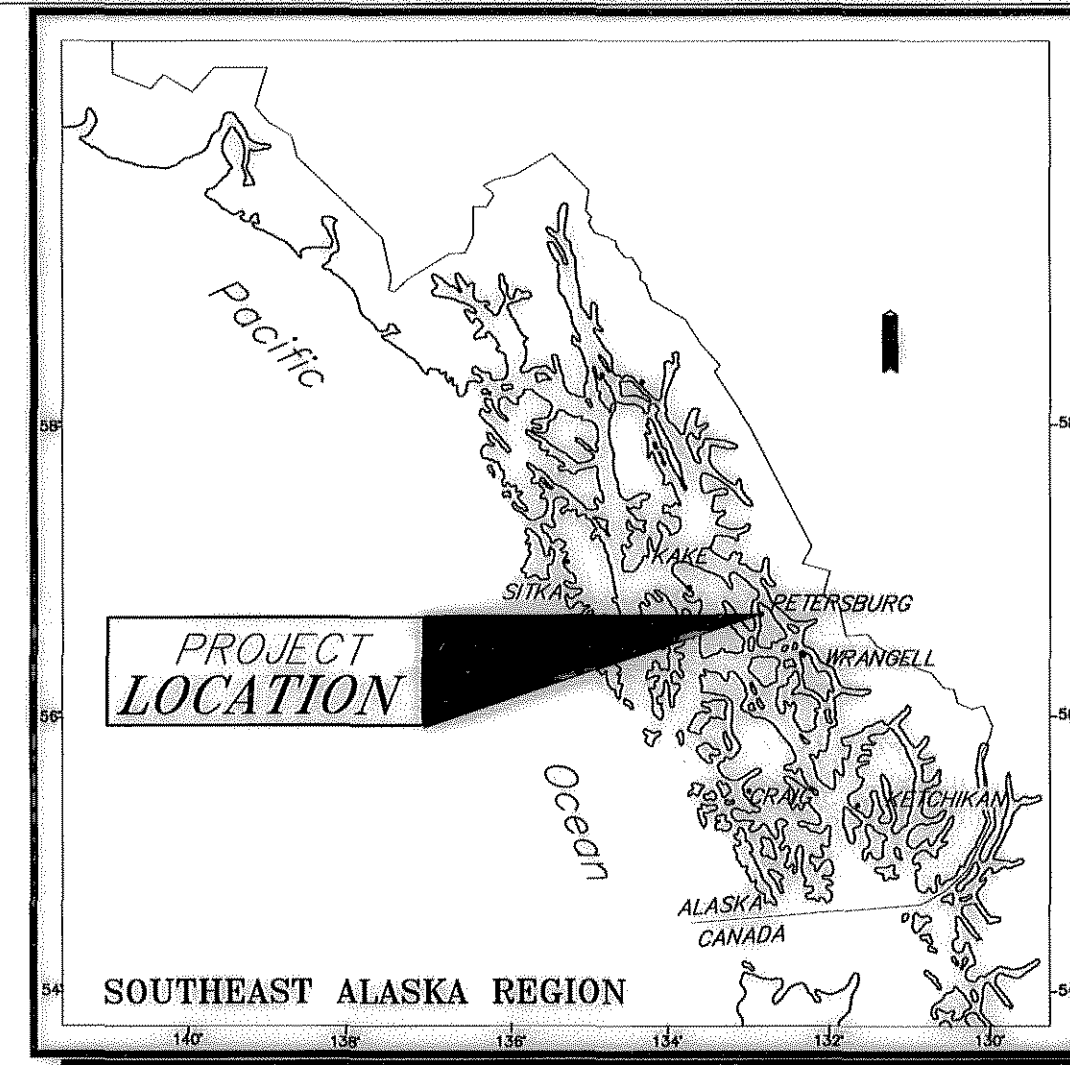
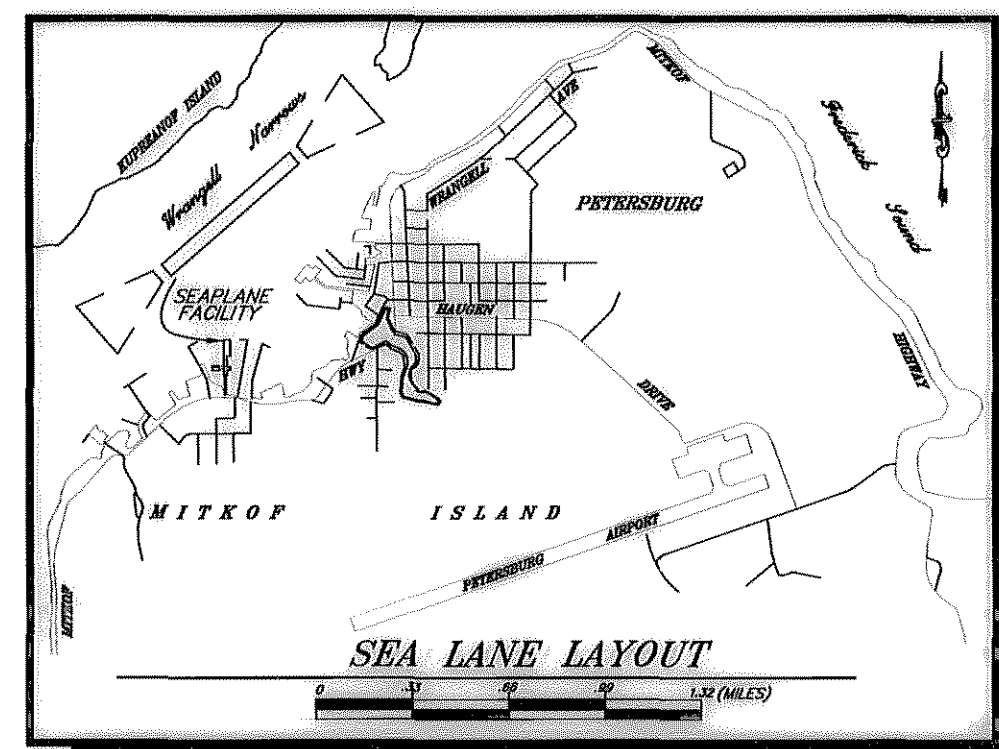


SEAPLANE FACILITY DATA	EXISTING	ULTIMATE
AIRPORT TYPE	UTILITY	UTILITY
AIRPORT IDENTIFIER	63A	63A
AIRCRAFT DESIGN GROUP/APPROACH SPEED CATEGORY	I/A	I/A
AIRPORT ELEVATION	SEA LEVEL	SEA LEVEL
MEAN MAXIMUM TEMPERATURE OF HOTTEST MONTH	63° F.	63° F.
WATERLANE DIMENSIONS	7000' x 250' ±	7000' x 250' ±
FLOAT ELEVATION	VARIABLES W/TIDE	VARIABLES W/TIDE
AIRPORT AND TERMINAL NAVIGATIONAL AIDS	NONE	NONE
FLOAT DIMENSIONS	VARIABLES	VARIABLES
PULL-UP RAMP WIDTH	15' & 18'	15' & 18'
MAXIMUM WING SPAN	79'	49'*
GANGWAY WIDTH	10'	10'
GRADIENT AT ELW	24.8%	24.8%
GRADIENT AT EHT	2.0%	2.0%
UTILITIES AVAILABLE	FLOAT LIGHTING	FLOAT LIGHTING, WATER

* EXCEPT FOR SPECIFIC DESIGNATED SLIPS/HANGARS FOR AIRCRAFT WITH 79' MAX. WINGSPAN.

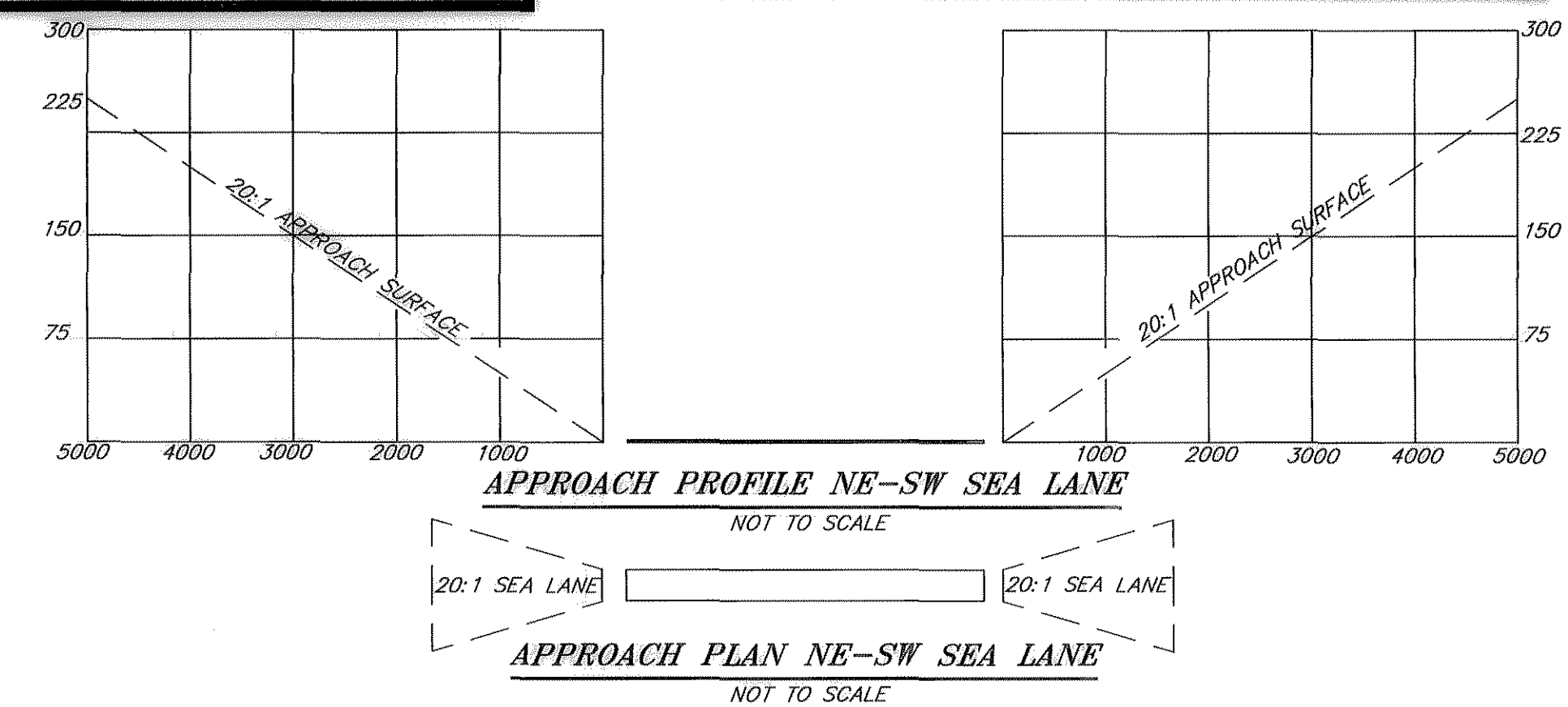
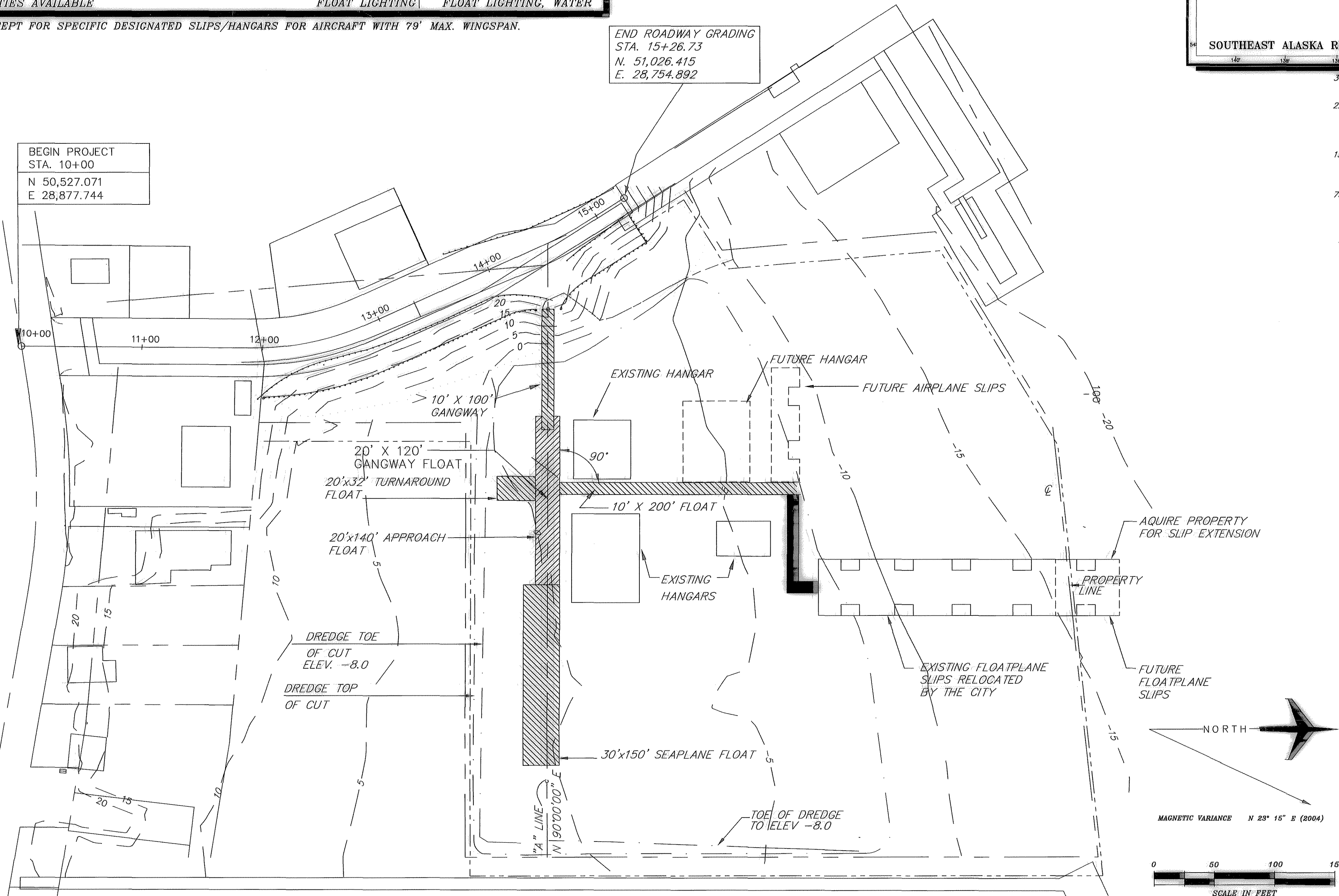
TIDAL DATA	
EHW	= 20.5'
EHT	= 19.5'
MHHW	= 15.7'
MHW	= 14.8'
H TL	= 8.1'
MLLW	= 0.0'
ELW	= -4.0'



INDEX OF SHEETS	
SHEET NO.	DESCRIPTION
1	AIRPORT LAYOUT DRAWING
2	AIRPORT PROPERTY MAP (EXHIBIT "A")

END ROADWAY GRADING
STA. 15+26.73
N. 51,026.415
E. 28,754.892

BEGIN PROJECT
STA. 10+00
N 50,527.071
E 28,877.744



The Lloyd R. Roundtree Seaplane Facility master plan update was undertaken with the master plan update for Petersburg James A. Johnson Airport. Coordination with airport users, members of the public, and representatives of City, State, and Federal government was accomplished through newsletters and public meetings.

Based aircraft are projected to remain at seven and remain 100 percent single-engine piston aircraft through the 20-year forecast period. Very little transient aircraft activity occurs because fuel is not available. The current split of general aviation operations, 50% itinerant and 50% local, is projected to continue through the 20-year forecast period.

ANNUAL AND PEAK DEMAND FORECASTS				
	2001	2007	2012	2022
Air Taxi Operations				
Annual	1,450	1,494	1,532	1,610
Peak Month	247	254	260	274
Design Day	8	8	8	9
Design Hour	1	1	1	1
General Aviation Aircraft Operations				
Annual	600	618	634	666
Peak Month	72	74	76	80
Design Day	2	2	2	3
Design Hour	0	0	0	1
Total Aircraft Operations				
Annual	2,050	2,112	2,166	2,276
Peak Month	319	328	337	354
Design Day	10	11	11	11
Design Hour	2	2	2	2

The Seaplane Facility will continue to be a General Aviation Airport according to the NPIAS and a Local Airport, providing secondary access to Petersburg, within the state airport system. The most demanding aircraft regularly using the Facility is a single-engine piston aircraft meeting ARC A-I. No change is projected through 2022.

One capital improvement project is proposed for implementation within the next five years. A water line should be extended to the hangars and slips to provide fresh water for washing seaplanes and cleaning debris, which reduces bird attraction.

Although not warranted by the forecasts, the Layout Plan shows how the docks might be extended to increase the number of slips and how a fourth hangar might be accommodated.

PLANNED: V.SKAGERBERG
DRAWN: SF/JL
CHECKED: V.SKAGERBERG

STATE OF ALASKA
DEPARTMENT OF TRANSPORTATION
AND PUBLIC FACILITIES
SOUTHEAST REGION PLANNING

PREVIOUS REVISION DATE: (previous revision)
APPROVED:
DATE: 3/22/05
VERNE SKAGERBERG, TRANSPORTATION PLANNER, FOR
ANDY HUGHES, CHIEF OF PLANNING

FAA AIRSPACE REVIEW NO: 04-AAL-203 NRA
FAA APPROVAL DATE: 3/22/05
BY:
FAA AIRPORT DIVISION, ALASKA REGION, AAL-610
SUBJECT TO CONDITIONS IN LETTER DATED: 3/22/05
PREVIOUS ALP FAA APPROVAL DATE: 30 April 1998

Lloyd R. Roundtree Seaplane Facility
Airport Layout Drawing

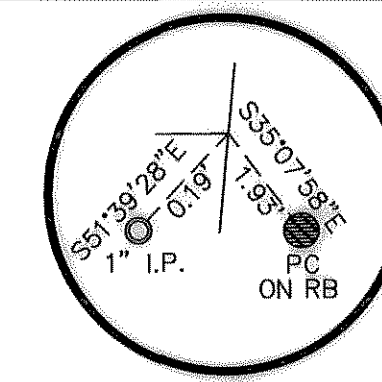
SHEET
1 OF 2

LEGEND

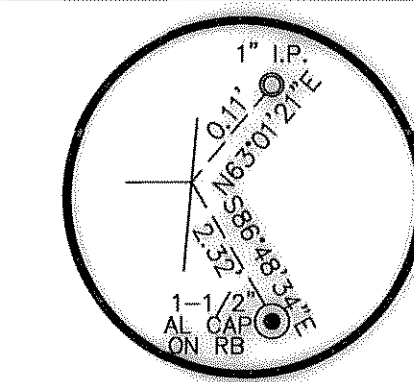
EXISTING BOUNDARY	
ULTIMATE BOUNDARY	

PROPERTY STATUS

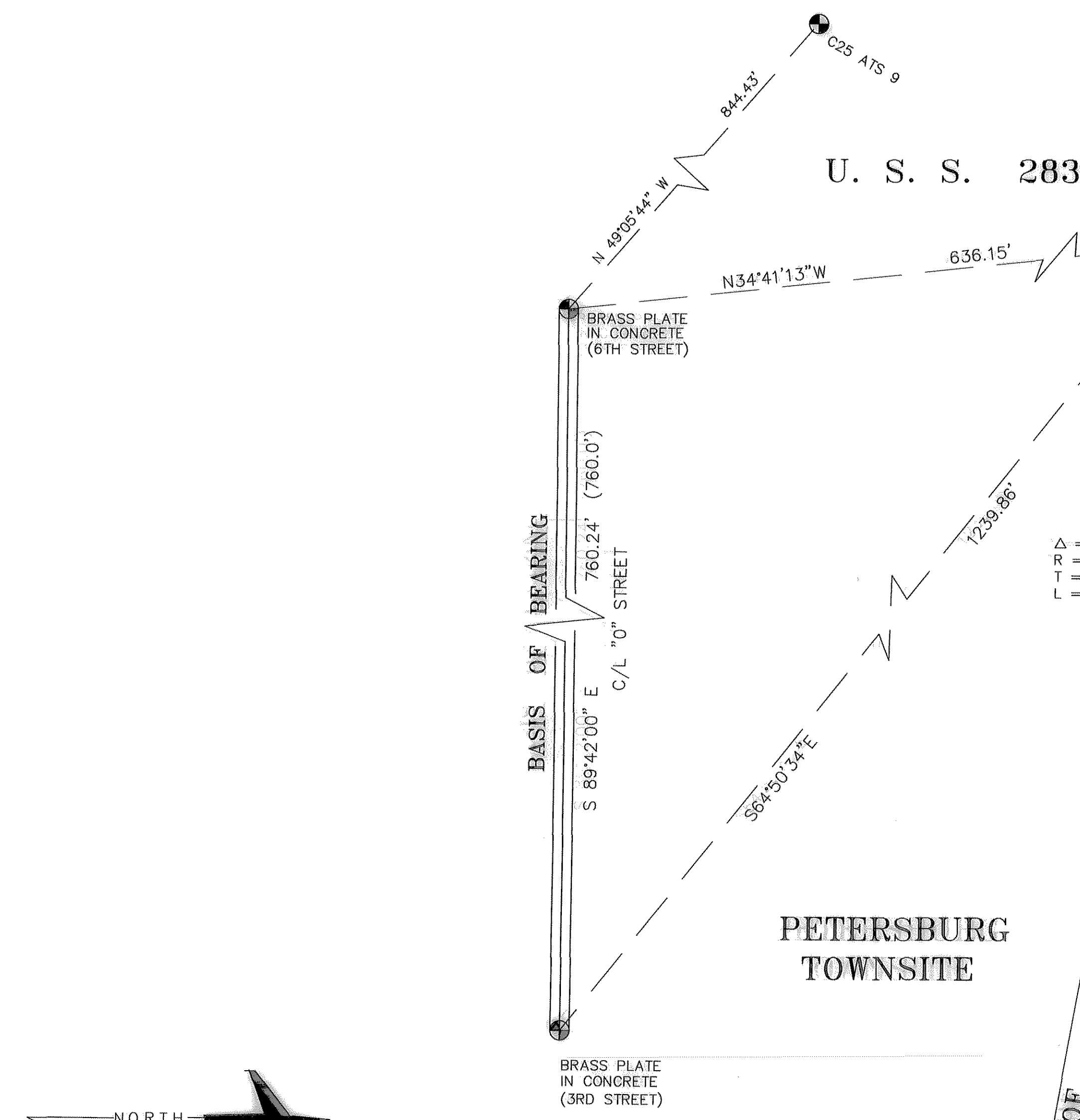
PARCEL	AREA	INTEREST ACQUIRED	DATE ACQUIRED
E-1	5.94 AC.	CORPORATION EASEMENT	7/7/94
E-2	0.5 AC.	CORPORATION EASEMENT	7/7/94



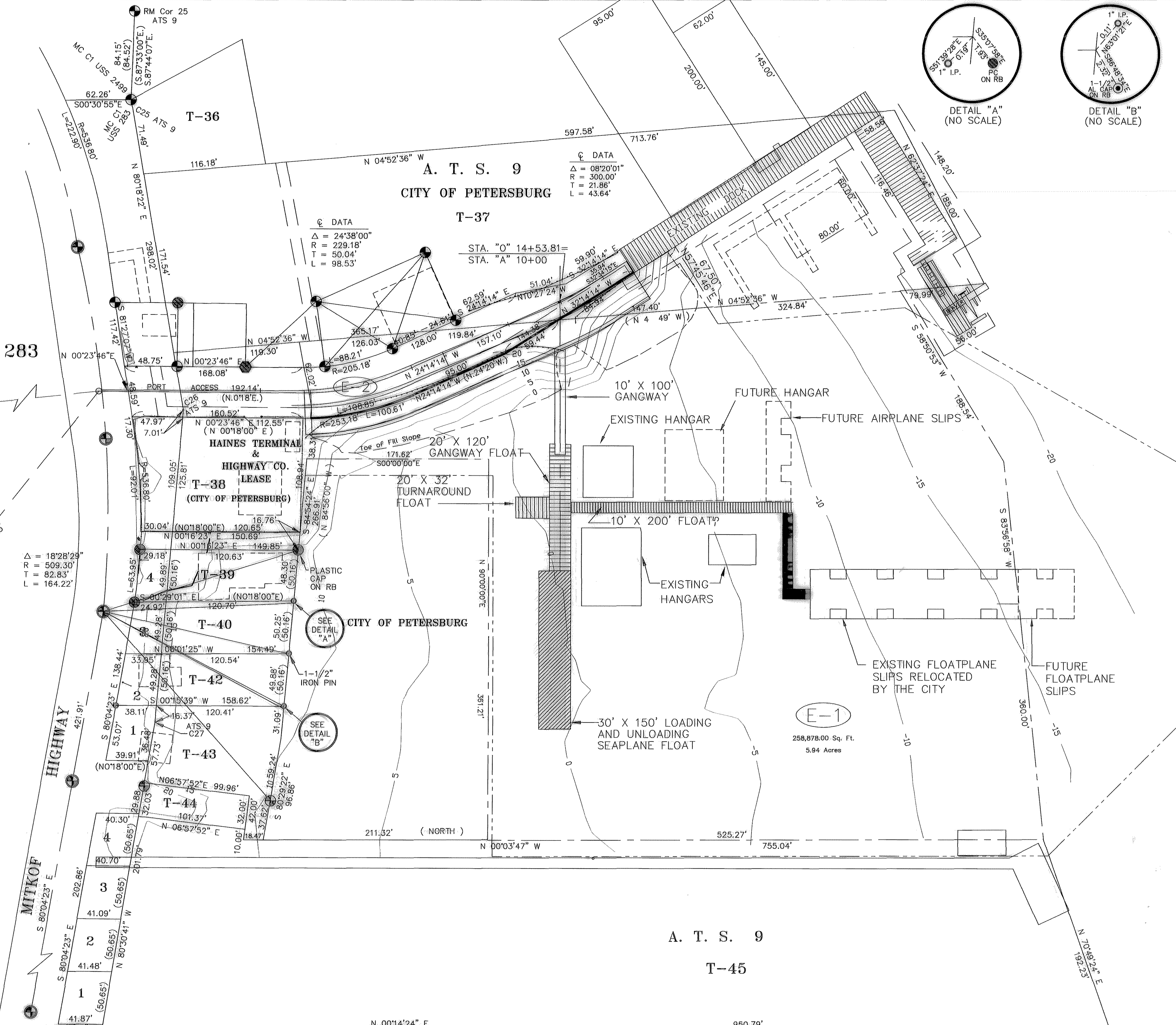
DETAIL "A"
(NO SCALE)



DETAIL "B"
(NO SCALE)



PETERSBURG TOWNSITE

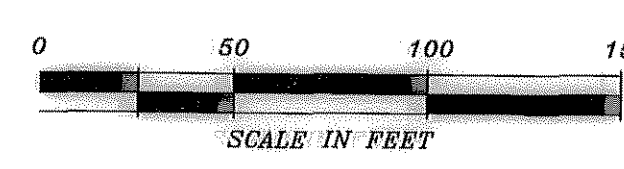


A. T. S. 9
T-45

E-1
258,878.00 Sq. Ft.
5.94 Acres



MAGNETIC VARIANCE N 29° 15' E (8004)



PLANNED: V.SKAGERBERG
DRAWN: SF/JL
CHECKED: V.SKAGERBERG

STATE OF ALASKA
DEPARTMENT OF TRANSPORTATION
AND PUBLIC FACILITIES
SOUTHEAST REGION PLANNING

PREVIOUS REVISION DATE: (previous revision)
APPROVED:
DATE: 3/22/05
VERNE SKAGERBERG, TRANSPORTATION PLANNER, FOR
ANDY HUGHES, CHIEF OF PLANNING

FAA AIRSPACE REVIEW NO: 04-AAL-203 NRA
FAA APPROVAL DATE: 3/22/05
BY:
FAA AIRPORT DIVISION, ALASKA REGION, AAL-610
SUBJECT TO CONDITIONS IN LETTER DATED: 3/22/05
PREVIOUS ALP FAA APPROVAL DATE: 30 April 1998

Lloyd R. Roundtree Seaplane Facility
Property Map (Exhibit A)

SHEET
2 OF 2