

NO.	DATE	REVISIONS	STATE	PROJECT DESIGNATION	YEAR	SHEET NO.	PLAN SET
			ALASKA	VAR	2020	1	A-K

STATE OF ALASKA

DEPARTMENT OF TRANSPORTATION
& PUBLIC FACILITIES

REVILLA & GRAVINA AIRPORT FERRY FACILITY IMPROVEMENTS KETCHIKAN, ALASKA

REVILLA NEW FERRY BERTH & UPLAND IMPROVEMENTS
PROJECT NO. SFHWY00085 / 0003209

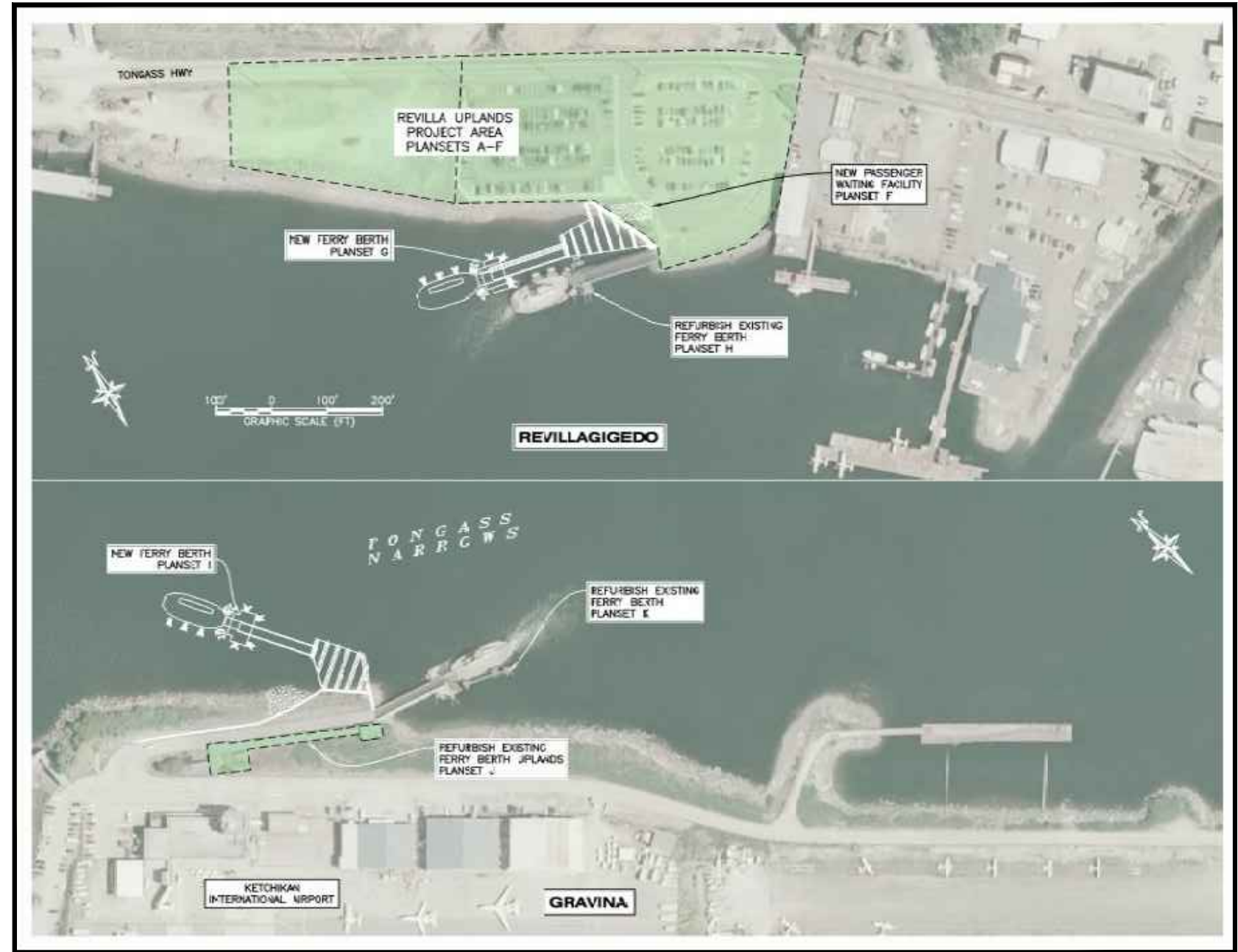
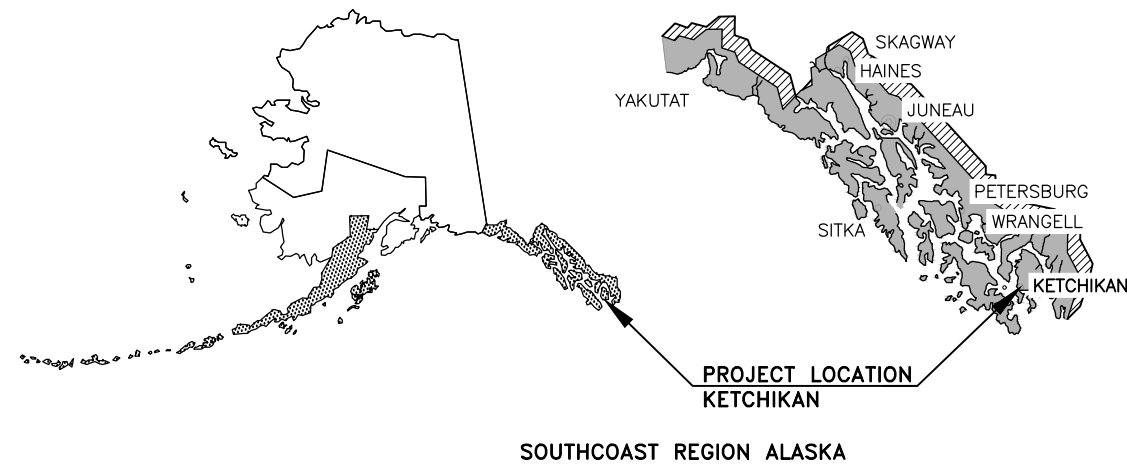
REVILLA NEW PASSENGER WAITING FACILITY
PROJECT NO. SFHWY00151 / 0952017

REVILLA REFURBISH EXISTING FERRY BERTH
PROJECT NO. SFHWY00150 / 0952021

GRAVINA NEW FERRY BERTH
PROJECT NO. SFHWY00109 / 0003213

GRAVINA REFURBISH EXISTING FERRY BERTH
PROJECT NO. SFHWY00153 / 0922010

**As Advertised:
March 04, 2020**



NEW SITE PLAN

PLANSET INDEX

PLANSET	DESCRIPTION
A	NORTH TONGASS HIGHWAY & UPLAND IMPROVEMENTS SFHWY00085/0003209
B	DROP OFF CANOPIES SFHWY00085/0003209
C	STORAGE BUILDING SFHWY00085/0003209
D	GENERATOR BUILDING SFHWY00085/0003209
E	ELECTRICAL-UPLANDS SFHWY00085/0003209
F	PASSENGER WAITING FACILITY SFHWY00151/0952017
G	REVILLA NEW FERRY BERTH SFHWY00085/0003209
H	REVILLA REFURBISH EXISTING FERRY BERTH SFHWY00150/0952021
I	GRAVINA NEW FERRY BERTH SFHWY00109/0003213
J	GRAVINA REFURBISH EXISTING FERRY BERTH - UPLANDS SFHWY00153/0922010
K	GRAVINA REFURBISH EXISTING FERRY BERTH SFHWY00153/0922010

SPECIFICATION INDEX

VOLUME	DESCRIPTION	APPLICABLE TO:
1	SPECIAL PROVISIONS & STANDARD MODIFICATIONS	PLANSETS A-K
2	SPECIAL PROVISIONS & STANDARD MODIFICATIONS	PLANSETS A-F
3	BUILDING SPECIFICATIONS	PLANSETS B, C, D & F
4	MECHANICAL & ELECTRICAL SPECIFICATIONS	PLANSETS B-F
5	SPECIAL PROVISIONS & STANDARD MODIFICATIONS	PLANSET G
6	SPECIAL PROVISIONS & STANDARD MODIFICATIONS	PLANSET H
7	SPECIAL PROVISIONS & STANDARD MODIFICATIONS	PLANSET I
8	SPECIAL PROVISIONS & STANDARD MODIFICATIONS	PLANSET J
9	BUILDING SPECIFICATIONS	PLANSET J
10	ELECTRICAL SPECIFICATIONS	PLANSET J
11	SPECIAL PROVISIONS & STANDARD MODIFICATIONS	PLANSET K

USE THESE PLANS IN CONJUNCTION WITH THE STATE OF ALASKA STANDARD SPECIFICATIONS FOR HIGHWAY CONSTRUCTION, 2017 EDITION AND THE PROJECT SPECIAL PROVISIONS.

STATE OF ALASKA
DEPARTMENT OF TRANSPORTATION & PUBLIC FACILITIES
6860 GLACIER HIGHWAY, JUNEAU, AK 99801
(907) 465-1763

APPROVED: *Kirk D. Miller* 3/3/2020
KIRK D. MILLER, P.E. DATE
REGIONAL PRECONSTRUCTION ENGINEER

CONCUR: *D. Lance Mearig* 3/3/2020
D. LANCE MEARIG, P.E. DATE
DIRECTOR, SOUTHCOAST REGION

TIDAL DATA

HTL	+19.7'
MHW	+14.6'
MLLW	0.0'
ELW	-5.3'

FILE G:\V\A\SFHWY00085\WF\Submittals\100% FINAL\1 - Cover & Survey-ROW Sheets\CAD files\01 - COVERSHEET.dwg 3/3/2020 10:16 LAYOUT TITLE SHEET DESIGNED ### CHECKED ### DRAFTED ###

FILE C:\Ktn\SFHWY0088\WF\Submittals\100% FINAL\1 - Cover & Survey-ROW Sheets\CAD files\02-03 - Revilla_Gravina\02\02\019 14:12 LAYOUT 2 DESIGNED STAFF CHECKED STAFF DRAFTED STAFF

MONUMENT NOTES:

1. IF ANY PAIR OF CONTROL POINTS DISAGREES FROM PUBLISHED VALUE BY MORE THAN 1:10,000 HORIZONTALLY OR VERTICALLY THEN A THIRD NETWORK POINT MUST BE TIED TO ASCERTAIN WHICH POINT IS IN ERROR OR HAS BEEN DISTURBED.

2. WHETHER LISTED OR NOT, ALL PROPERTY MONUMENTS, OR PROPERTY MARKERS, CORNERS OR ACCESSORIES WHICH WILL BE DISTURBED OR BURIED SHALL BE REFERENCED PRIOR TO BEING DISTURBED, AND RE-ESTABLISHED IN THEIR ORIGINAL HORIZONTAL POSITION AND A RECORD OF MONUMENT FORM IN ACCORDANCE WITH (A.S.34.65.040) AND (A.S.19.10.260) SHALL BE SUBMITTED TO THE CONSTRUCTION ENGINEER FOR REVIEW PRIOR TO RECORDING. COORDINATE VALUES LISTED ARE FOR INFORMATIONAL PURPOSES AND SHOULD BE USED TO RESET MONUMENTS ONLY AS A LAST RESORT.

3. WHEN POSSIBLE ALL ORIGINAL PRIMARY MONUMENTS SHALL BE SAVED AND RESET IN THEIR ORIGINAL HORIZONTAL POSITION AND A RECORD OF MONUMENT FORM IN ACCORDANCE WITH (A.S.34.65.040) AND (A.S.19.10.260) SHALL BE SUBMITTED TO THE CONSTRUCTION ENGINEER FOR REVIEW PRIOR TO RECORDING

4. RIGHT OF WAY LOCATION IS SHOWN FOR GRAPHICAL ORIENTATION PURPOSES ONLY. REFER TO ALASKA DOT&PF RIGHT OF WAY MAPS FOR RIGHT OF WAY INFORMATION.

5. HORIZONTAL AND VERTICAL CONTROL MUST BE FIELD VERIFIED BY THE CONTRACTOR. DISCREPANCIES WILL BE REPORTED TO DOT&PF CONSTRUCTION PROJECT ENGINEER.

EXISTING PROPERTY MONUMENTS TO BE REFERENCED & REPLACED					
Point #	Northing	Easting	Description	Station	Offset
502	120378.25	92545.99	ALCAP_FND_DIGMON_C-2-ATS1378_T.L.A-USS-1083-5453S	20+16.60	265.73R
503	120471.69	92408.86	REBAR5/8" FND_CAP-MISSING	18+53.02	248.41R
507	120606.53	92627.67	ALCAP3.25" FND_INCASE_NO-MARKINGS	19+81.74	25.94R
508	120454.73	92911.86	ALCAP2" FND_TW-19_LS7213	23+04.34	26.71R
511	120351.74	93057.63	ALCAP2" MARKS-GONE	24+87.99	28.01R
512	120332.95	93047.05	SPINHOLE_FND_2"ALCAP_BADLY-DAMAGED	24+91.77	49.24R
513	120156.30	92906.67	ALCAP2" FND_WC-MC_LS7214	24+95.58	274.85R
514	120221.20	92688.50	BC2" NO-MARKS_IN ABUTMENT	22+15.64	337.83R
1000	121028.84	91990.24	ALCAP3.25" S1687/S1083/ROW	12+20.28	43.65L
1094	120591.11	92789.84	ALCAP2" L1/L2/ROW	21+32.09	36.50L
1098	120526.79	92909.68	ALCAP2" L1/ROW	22+68.10	35.74L
1099	120532.65	92929.93	ALCAP2" L1/ROW	22+83.26	50.39L
1113	120508.84	92962.45	ALCAP2" L8/ROW	23+21.32	45.35L
1114	120481.83	92969.78	ALCAP2" L8/ROW	23+40.70	25.90L

ALL PROPERTY MONUMENTS IN THESE TABLES SHALL BE REFERENCED PRIOR TO DISTURBANCE FROM CONSTRUCTION AND RE-ESTABLISHED IN THEIR ORIGINAL HORIZONTAL POSITION AND A RECORD OF MONUMENT FORM IN ACCORDANCE WITH A.S.34.65.040 SHALL BE SUBMITTED TO DOT FOR REVIEW PRIOR TO RECORDING.

SURVEY CONTROL TABLE						
Point #	Northing	Easting	Elevation	Description	Station	Offset
4	120184.93	92717.60	23.34	ALCAP2" DOT_SET	22+58.33	356.27R
5	120468.85	92421.22	25.62	ALCAP2" DOT_SET	18+65.25	245.04R
6	120808.29	91962.89	29.62	ALCAP2" DOT_SET	13+00.78	163.50R

ALL SURVEY CONTROL MONUMENTS IN THIS TABLE ARE PROVIDED STRICTLY FOR SURVEY CONTROL. SHOULD ANY OF THEM BE DESTROYED DURING CONSTRUCTION THEY SHALL NOT BE REPLACED.

TONGASS HIGHWAY DESIGN ALIGNMENT									
SEGMENT	STATION	NORTHING	EASTING	DISTANCE	BEARING	STATION	RADIUS	LENGTH	DELTA
C1	10+00.00	121100.72	91779.02			11+33.95	1320.00	133.95	5°48'51"
L1	11+33.95	121031.34	91893.53	855.16	S61° 41' 48"E	19+89.11			
C2	19+89.11	120625.88	92646.45			20+24.06	5000.00	34.95	0°24'02"
L2	20+24.06	120609.41	92677.28	260.25	S62° 05' 50"E	22+84.31			
C3	22+84.31	120487.62	92907.28			24+69.61	920.00	185.30	11°32'24"
L3	24+69.61	120385.06	93061.23	80.39	S50° 33' 26"E	25+50.00			

NO.	DATE	REVISION	STATE	PROJECT DESIGNATION	YEAR	SHEET NO.	PLAN SET
			ALASKA	VAR	2019	2	A-K

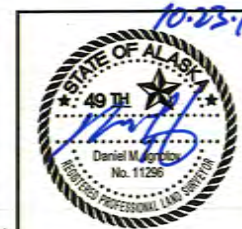
EXISTING PROPERTY					
Point #	Northing	Easting	Description	Station	Offset
504	121071.43	91788.83	BC2.5" FND_SHMON_NT_2	10+24.20	18.97R
505	121680.85	91215.19	BC2.5" FND_SHMON_NT_3	N/A	N/A
506	122115.56	90869.82	BC2.5" FND_SHMON_NT_4	N/A	N/A
509	120404.57	93086.29	ALCAP2" FND_ROW_LS13013	24+76.56	30.99L
510	120301.58	93208.74	SPINHOLE_FND_2" ALCAP_ROW_L2-2A	N/A	N/A
515	120222.08	93297.01	ALCAP_FND3.25"-S1528_ROW_1410S	N/A	N/A
1095	120675.47	92837.38	ALCAP2" L1/L2/L2	21+34.63	133.30L
1100	120603.87	92964.41	ALCAP2" WC/ROW/SFB	22+80.40	129.47L
1112	120579.39	93007.98	ALCAP2" WC/ROW/SFB	23+24.70	129.24L

THE MAP PROJECTION USED THIS SURVEY

Name: KTN LDP GRID 2016
 Projection type: Transverse Mercator
 Latitude of grid origin: 55°10'00.0"N (55.1666666666667)
 Central meridian (grid origin): 131°40'00.0"W (-131.666666666667)
 False northing: 50000.0 ft
 False easting: 100000.0 ft
 Grid scale factor: 1.000002
 Linear unit: Survey Feet
 Datum: D_NAD_1983_2011
 Ellipsoid: GRS_1980
 Semi-major axis (m): 6378137.0
 Inverse flattening: 298.257222101

VERTICAL CONTROL STATEMENT

ELEVATIONS LISTED ARE RELATIVE TO MEAN LOWER LOW WATER = 0.00' AND BASED ON TIES TO N.O.A.A. NATIONAL OCEAN SERVICE TIDE STATION AND BENCHMARK SERIES 9450460 TIDAL EPOCH 1/1983 - 12/2001 PUBLISHED 9/27/2011 LOCATED AT U.S.C.G STATION IN KETCHIKAN.



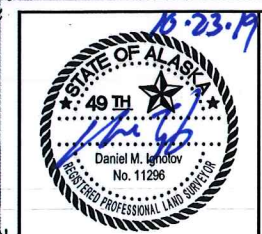
STATE OF ALASKA DEPARTMENT OF TRANSPORTATION AND PUBLIC FACILITIES
 6860 GLACIER HIGHWAY, JUNEAU, AK 99801
 (907) 465-1763
REVILLA & GRAVINA AIRPORT FERRY FACILITY IMPROVEMENTS

SURVEY CONTROL

NO.	DATE	REVISION	STATE	PROJECT DESIGNATION	YEAR	SHEET NO.	PLAN SET
			ALASKA	VAR	2019	3	A-K



FILE: C:\Ktr\SFHW\00085\WF\Submittals\100% FINAL\1 - Cover & Survey-ROW Sheets\CAD files\02-03 - Revilla_BDAL\1020\000\0019 14:00 LAYOUT 3
 DESIGNED STAFF
 CHECKED STAFF
 DRAFTED STAFF



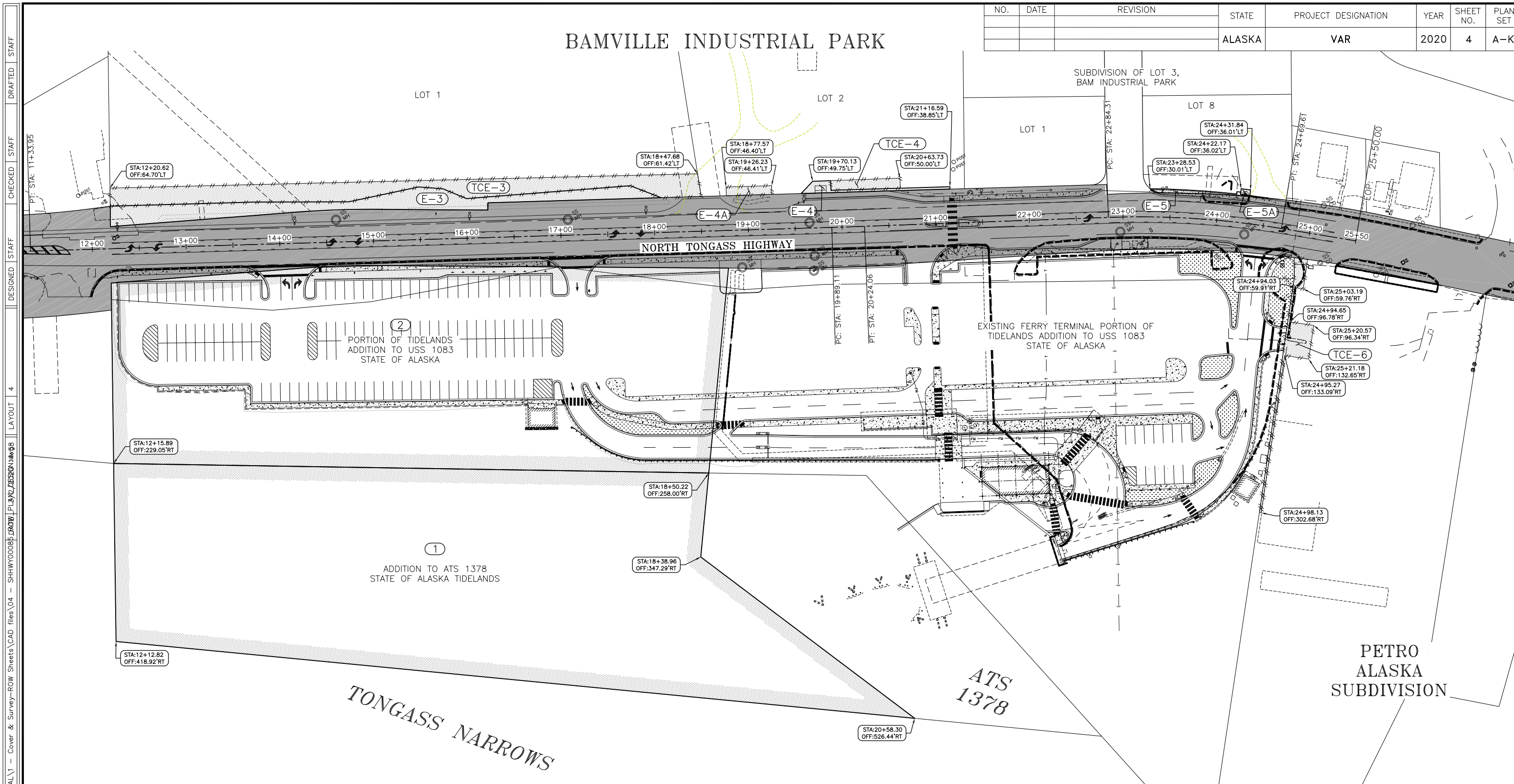
STATE OF ALASKA DEPARTMENT OF TRANSPORTATION
 AND PUBLIC FACILITIES
 6860 GLACIER HIGHWAY, JUNEAU, AK 99801
 (907) 465-1763
**REVILLA & GRAVINA AIRPORT FERRY
 FACILITY IMPROVEMENTS**

SURVEY CONTROL

DRAWING SCALES ARE FOR FULL-SIZE SHEETS. USE DIMENSIONS WHEN SCALE NOT SHOWN.

BAMVILLE INDUSTRIAL PARK

NO.	DATE	REVISION	STATE	PROJECT DESIGNATION	YEAR	SHEET NO.	PLAN SET
			ALASKA	VAR	2020	4	A-K



FILE: Q:\Ktn\SFH\00085\WF\Submittals\100% FINAL\1 - Cover & Survey-ROW Sheets\CAD files\04 - SHHW\00085\DRG\1 - LAYOUT 4
 DRAFTED | STAFF | CHECKED | STAFF | DESIGNED | STAFF | LAYOUT 4

NOTES:

- 1.) THIS SHEET IS FOR INFORMATIONAL PURPOSES ONLY, AND DOES NOT REPRESENT A BOUNDARY SURVEY.
- 2.) PARCEL PLATS AND ACQUISITION DOCUMENTS ARE ON FILE WITH THE DEPARTMENT. REFER TO THEM FOR ADDITIONAL DETAILS. SHOULD THERE BE ANY DISCREPANCY BETWEEN THIS SHEET AND THE ACQUISITION DOCUMENTS, THE ACQUISITION DOCUMENTS SHALL HOLD AS BEING CORRECT.

FOR INFORMATIONAL PURPOSES ONLY	STATE OF ALASKA DEPARTMENT OF TRANSPORTATION AND PUBLIC FACILITIES 6860 GLACIER HIGHWAY, JUNEAU, AK 99801 (907) 465-1763
	REVILLA & GRAVINA AIRPORT FERRY FACILITY IMPROVEMENTS
	PROPERTY & EASEMENT MAP

FILE C:\Ktm\SFHW0085\VF\Submittals\100% FINAL\1 - Cover & Survey-ROW Sheets\CAD files\05 - _Gravina_Survey\10-23-19\10-23-19.dwg / 2019 14:10 LAYOUT 5 DESIGNED STAFF CHECKED STAFF DRAFTED STAFF

MONUMENT NOTES:

1. IF ANY PAIR OF CONTROL POINTS DISAGREES FROM PUBLISHED VALUE BY MORE THAN 1:10,000 HORIZONTALLY OR VERTICALLY THEN A THIRD NETWORK POINT MUST BE TIED TO ASCERTAIN WHICH POINT IS IN ERROR OR HAS BEEN DISTURBED.
2. WHETHER LISTED OR NOT, ALL PROPERTY MONUMENTS, OR PROPERTY MARKERS, CORNERS OR ACCESSORIES WHICH WILL BE DISTURBED OR BURIED SHALL BE REFERENCED PRIOR TO BEING DISTURBED, AND RE-ESTABLISHED IN THEIR ORIGINAL HORIZONTAL POSITION AND A RECORD OF MONUMENT FORM IN ACCORDANCE WITH (A.S.34.65.040) AND (A.S.19.10.260) SHALL BE SUBMITTED TO THE CONSTRUCTION ENGINEER FOR REVIEW PRIOR TO RECORDING. COORDINATE VALUES LISTED ARE FOR INFORMATIONAL PURPOSES AND SHOULD BE USED TO RESET MONUMENTS ONLY AS A LAST RESORT.
3. WHEN POSSIBLE ALL ORIGINAL PRIMARY MONUMENTS SHALL BE SAVED AND RESET IN THEIR ORIGINAL HORIZONTAL POSITION AND A RECORD OF MONUMENT FORM IN ACCORDANCE WITH (A.S.34.65.040) AND (A.S.19.10.260) SHALL BE SUBMITTED TO THE CONSTRUCTION ENGINEER FOR REVIEW PRIOR TO RECORDING
4. RIGHT OF WAY LOCATION IS SHOWN FOR GRAPHICAL ORIENTATION PURPOSES ONLY. REFER TO ALASKA DOT&PF RIGHT OF WAY MAPS FOR RIGHT OF WAY INFORMATION.
5. HORIZONTAL AND VERTICAL CONTROL MUST BE FIELD VERIFIED BY THE CONTRACTOR. DISCREPANCIES WILL BE REPORTED TO DOT&PF CONSTRUCTION PROJECT ENGINEER.

Survey Control Table				
Point #	Northing	Easting	Elevation	Description
1	119750.65	90415.08	27.39	BC2" _KIA-33_FND
2	119061.74	91623.73	45.31	BC2" _AKDOT-2_SET
3	119480.23	91217.35	44.33	ALCAP2" _DOT_SET
500	119026.50	91630.97	45.61	BC2.5" _FND_S/R_C.L_P.I_8
501	118742.03	91781.67	33.77	BC2.5" _FND_S/R_C.L_P.I_9

CENTERLINE MONUMENTS 500 & 501 IN THIS TABLE SHALL BE PRESERVED IN PLACE. IF NOT POSSIBLE MONUMENTS WILL BE REFERENCED PRIOR TO DISTURBANCE AND REPLACED AT THEIR ORIGINAL HORIZONTAL POSITION. A RECORD OF MONUMENT FORM IN ACCORDANCE WITH A.S.34.65.040 SHALL BE SUBMITTED TO DOT & PF PROJECT ENGINEER FOR REVIEW PRIOR TO RECORDING FOR EACH MONUMENT.

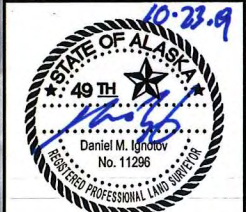
NO.	DATE	REVISION	STATE	PROJECT DESIGNATION	YEAR	SHEET NO.	PLAN SET
			ALASKA	VAR	2019	5	A-K

MAP PROJECTION USED THIS SURVEY

Name: KTN LDP GRID 2016
 Projection type: Transverse Mercator
 Latitude of grid origin: 55°10'00.0"N (55.166666666667)
 Central meridian (grid origin): 131°40'00.0"W (-131.666666666667)
 False northing: 50000.0 ft
 False easting: 100000.0 ft
 Grid scale factor: 1.000002
 Linear unit: Survey Feet
 Datum: NAD83 (2011)
 Ellipsoid: GRS_1980
 Semi-major axis (m): 6378137.0
 Inverse flattening: 298.257222101

VERTICAL CONTROL STATEMENT

ELEVATIONS LISTED ARE RELATIVE TO MEAN LOWER LOW WATER = 0.00' AND BASED ON TIES TO N.O.A.A. NATIONAL OCEAN SERVICE TIDE STATION AND BENCHMARK SERIES 9450460 TIDAL EPOCH 1/1983 – 12/2001 PUBLISHED 9/27/2011 LOCATED AT U.S.C.G STATION IN KETCHIKAN.



STATE OF ALASKA DEPARTMENT OF TRANSPORTATION AND PUBLIC FACILITIES
 6860 GLACIER HIGHWAY, JUNEAU, AK 99801
 (907) 465-1763

REVILLA & GRAVINA AIRPORT FERRY FACILITY IMPROVEMENTS

SURVEY CONTROL

DRAWING SCALES ARE FOR FULL-SIZE SHEETS. USE DIMENSIONS WHEN SCALE NOT SHOWN.