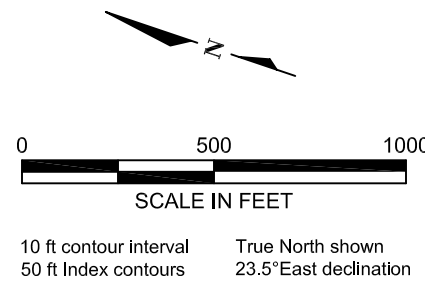



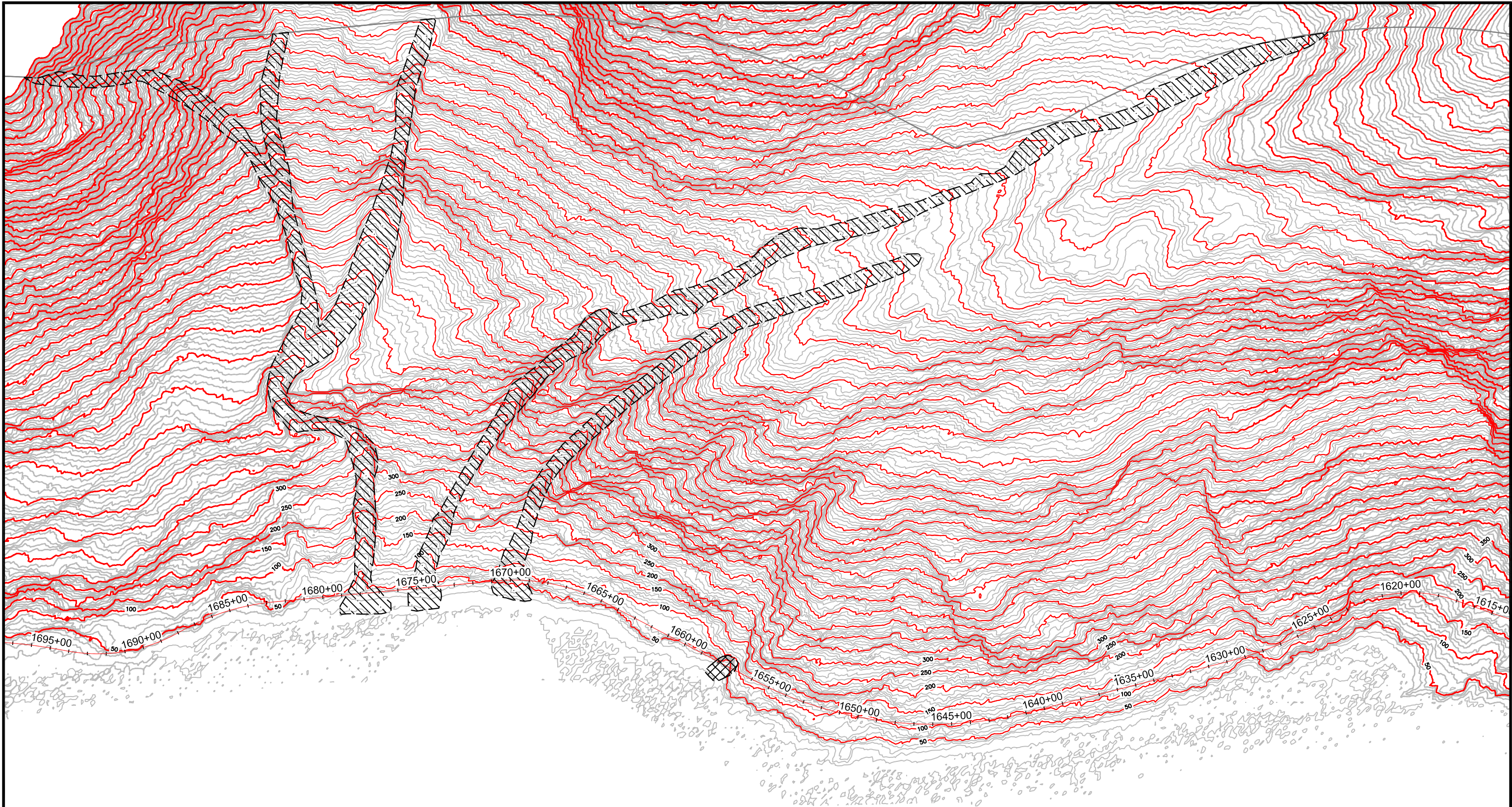
EXPLANATION:

- — APPROXIMATE HAZARD DELINEATION
- SYMBOL GEOLOGIC HAZARD
- | | | | |
|--|--------------------|--|----------------------------------|
| | DF - DEBRIS FLOW | | UPSLOPE MAPPING BOUNDARY |
| | RF - ROCKFALL | | 1530+00 INERTIAL REFERENCE POINT |
| | RS - ROCKSLIDE | | 2006 (IRP 2006) ALIGNMENT |
| | SR - SOIL RAVELING | | |
| | LS - LANDSLIDE | | |
| | HR - HAZARD ROCK | | |



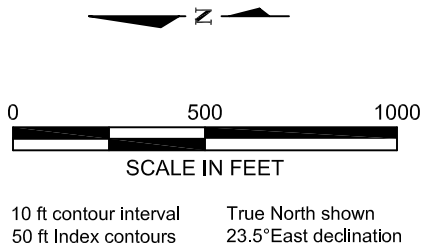
REFERENCE: Base map from LIDAR provided by ADOT&PF.

 Golder Associates Anchorage, Alaska	SCALE AS SHOWN	PRELIMINARY GEOLOGIC HAZARD MAP IRP 2006 1535+00 - 1615+00 LYNN CANAL, ALASKA	
	CADD AM/AF/EC		
	DATE 12/21/06		
	CHECK RGD	ADOT / LYNN CANAL HWY ZONE 4 / AK	
FILE No. 1 to 500 hazard.dwg	DATE 12/29/06		
PROJECT No. 063-5782	REV. 0	FIGURE 2	




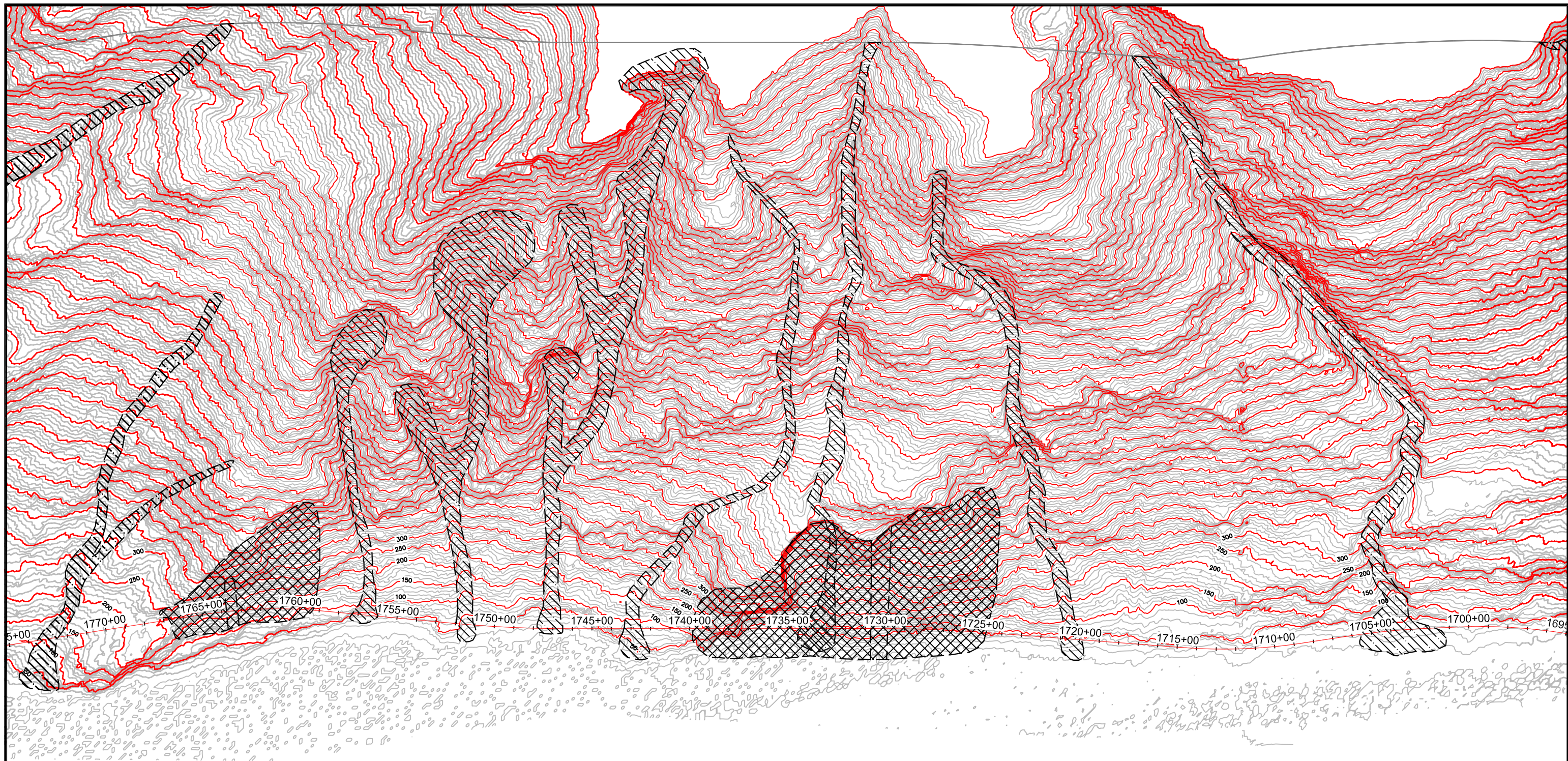
EXPLANATION:

---	APPROXIMATE HAZARD DELINEATION		
SYMBOL GEOLOGIC HAZARD			
	DF - DEBRIS FLOW		UPSLOPE MAPPING BOUNDARY
	RF - ROCKFALL		INERTIAL REFERENCE POINT
	RS - ROCKSLIDE		2006 (IRP 2006) ALIGNMENT
	SR - SOIL RAVELING		
	LS - LANDSLIDE		
	HR - HAZARD ROCK		



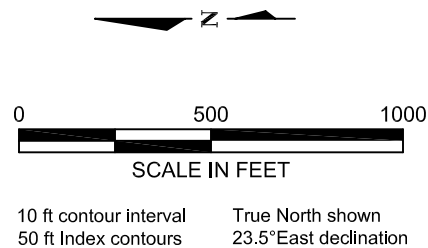
REFERENCE: Base map from LIDAR provided by ADOT&PF.

 Golder Associates Anchorage, Alaska	SCALE AS SHOWN	PRELIMINARY GEOLOGIC HAZARD MAP IRP 2006 1615+00 - 1697+00 LYNN CANAL, ALASKA	
	CADD AM/AF/EC		
	DATE 12/21/06		
	CHECK RGD		
FILE No. 1 to 500 hazard.dwg	DATE 12/29/06	ADOT / LYNN CANAL HWY ZONE 4 / AK	FIGURE 3
PROJECT No. 063-5782	REV. 0		



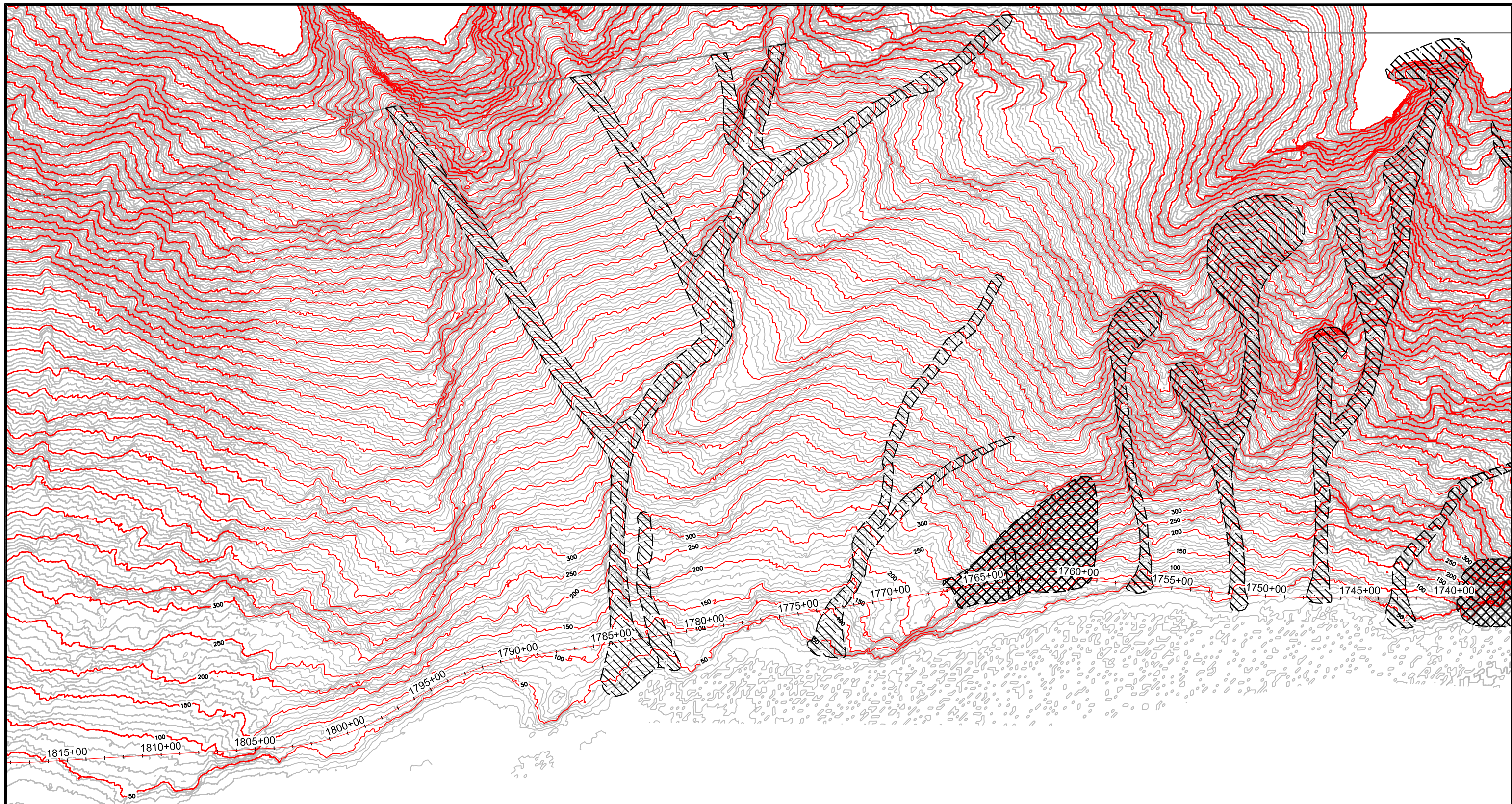
EXPLANATION:

---	APPROXIMATE HAZARD DELINEATION
SYMBOL GEOLOGIC HAZARD	
	DF - DEBRIS FLOW
	RF - ROCKFALL
	RS - ROCKSLIDE
	SR - SOIL RAVELING
	LS - LANDSLIDE
	HR - HAZARD ROCK
	UPSLOPE MAPPING BOUNDARY
	INERTIAL REFERENCE POINT 2006 (IRP 2006) ALIGNMENT



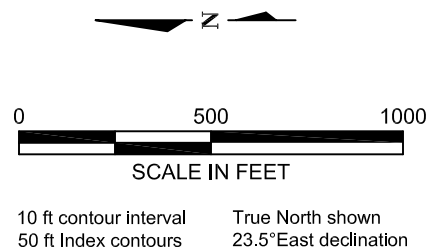
REFERENCE: Base map from LIDAR provided by ADOT&PF.

 Golder Associates Anchorage, Alaska	SCALE AS SHOWN	PRELIMINARY GEOLOGIC HAZARD MAP IRP 2006 1695+00 - 1775+00 LYNN CANAL, ALASKA	
	CADD AM/AF/EC		
	DATE 12/21/06		
	CHECK RGD	ADOT / LYNN CANAL HWY ZONE 4 / AK	
FILE No. 1 to 500 hazard.dwg	DATE 12/29/06		
PROJECT No. 063-5782	REV. 0	FIGURE 4	



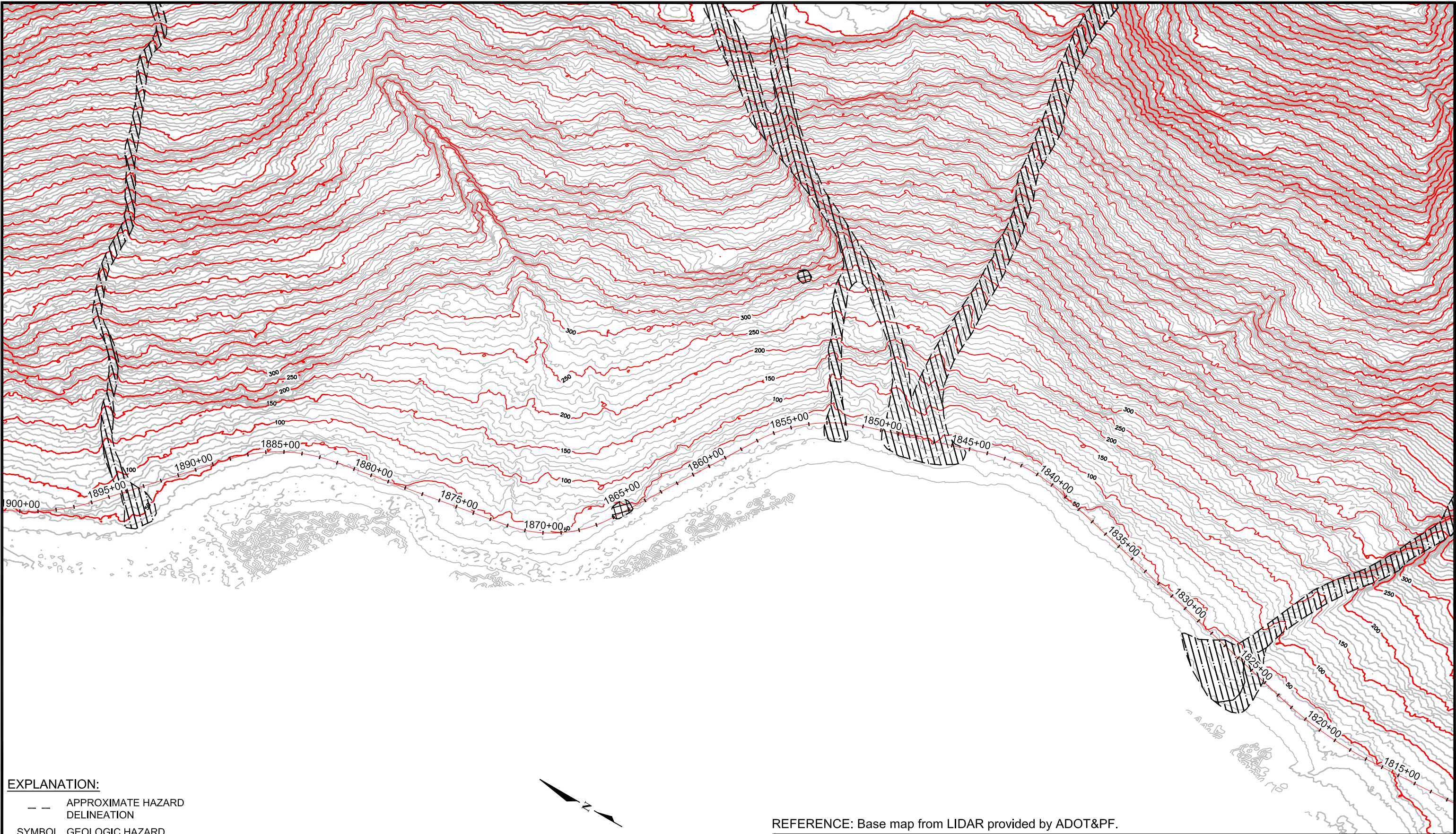
EXPLANATION:

---	APPROXIMATE HAZARD DELINEATION		
SYMBOL GEOLOGIC HAZARD			
	DF - DEBRIS FLOW		UPSLOPE MAPPING BOUNDARY
	RF - ROCKFALL		1530+00 INERTIAL REFERENCE POINT 2006 (IRP 2006) ALIGNMENT
	RS - ROCKSLIDE		
	SR - SOIL RAVELING		
	LS - LANDSLIDE		
	HR - HAZARD ROCK		



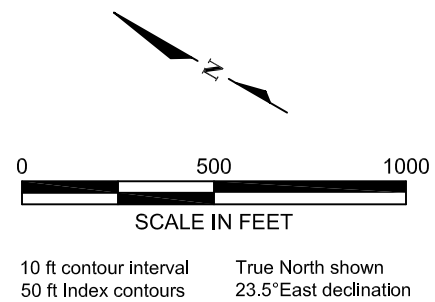
REFERENCE: Base map from LIDAR provided by ADOT&PF.

 Golder Associates Anchorage, Alaska	SCALE AS SHOWN	PRELIMINARY GEOLOGIC HAZARD MAP IRP 2006 1737+00 - 1818+00 LYNN CANAL, ALASKA	
	CADD AM/AF/EC		
	DATE 12/21/06		
	CHECK RGD	ADOT / LYNN CANAL HWY ZONE 4 / AK	
FILE No. 1 to 500 hazard.dwg	DATE 12/29/06		
PROJECT No. 063-5782	REV. 0	FIGURE 5	




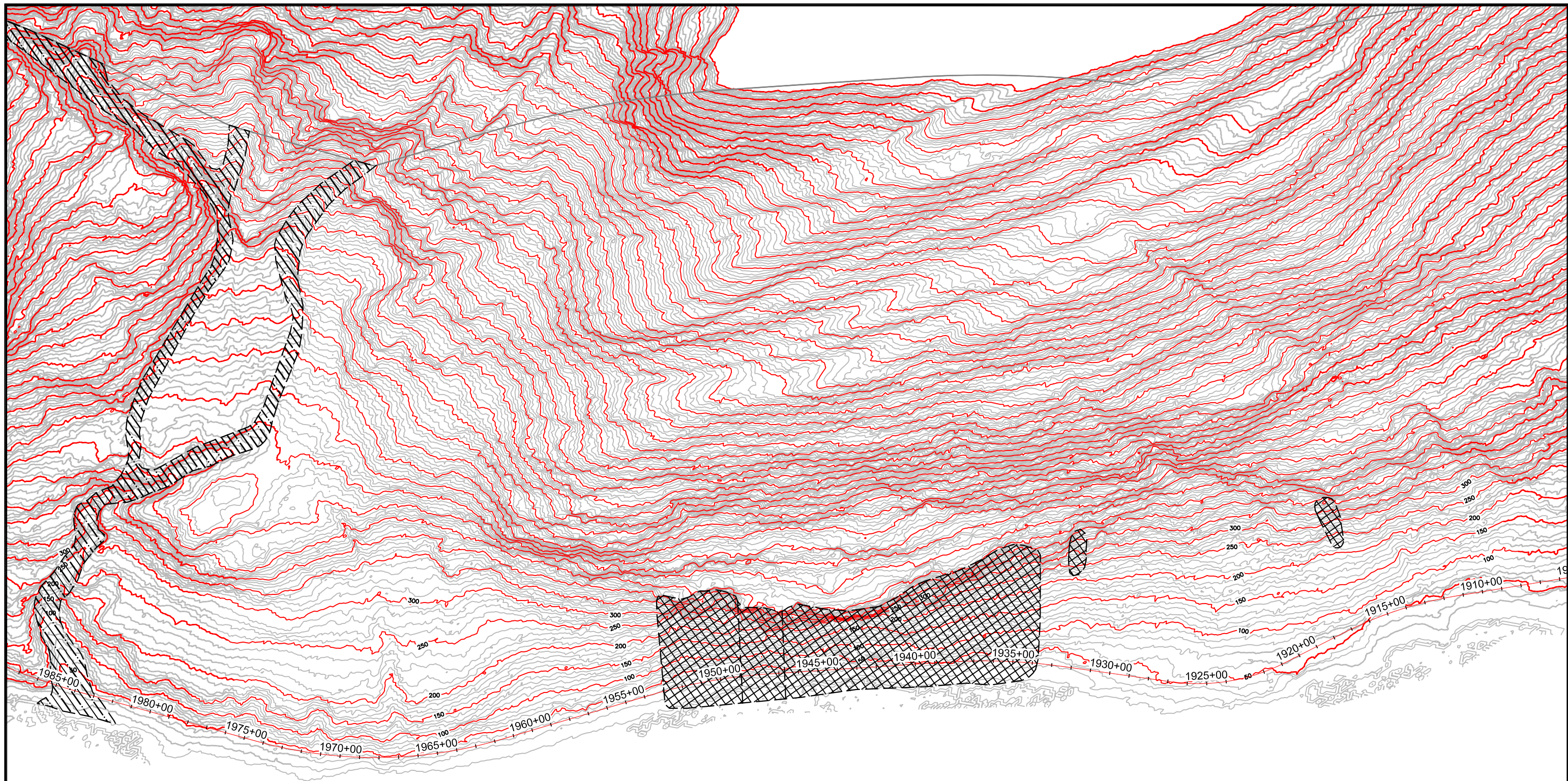
EXPLANATION:

- — APPROXIMATE HAZARD DELINEATION
- SYMBOL GEOLOGIC HAZARD**
- | | | | |
|--|--------------------|--|---------------------------|
| | DF - DEBRIS FLOW | | UPSLOPE MAPPING BOUNDARY |
| | RF - ROCKFALL | | INERTIAL REFERENCE POINT |
| | RS - ROCKSLIDE | | 2006 (IRP 2006) ALIGNMENT |
| | SR - SOIL RAVELING | | |
| | LS - LANDSLIDE | | |
| | HR - HAZARD ROCK | | |



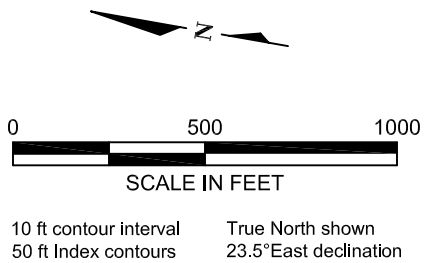
REFERENCE: Base map from LIDAR provided by ADOT&PF.

 Golder Associates Anchorage, Alaska	SCALE AS SHOWN	PRELIMINARY GEOLOGIC HAZARD MAP IRP 2006 1812+00 - 1900+00 LYNN CANAL, ALASKA	
	CADD AM/AF/EC		
	DATE 12/21/06		
	CHECK RGD	ADOT / LYNN CANAL HWY ZONE 4 / AK	
FILE No. 1 to 500 hazard.dwg	DATE 12/29/06		
PROJECT No. 063-5782	REV. 0	FIGURE 6	



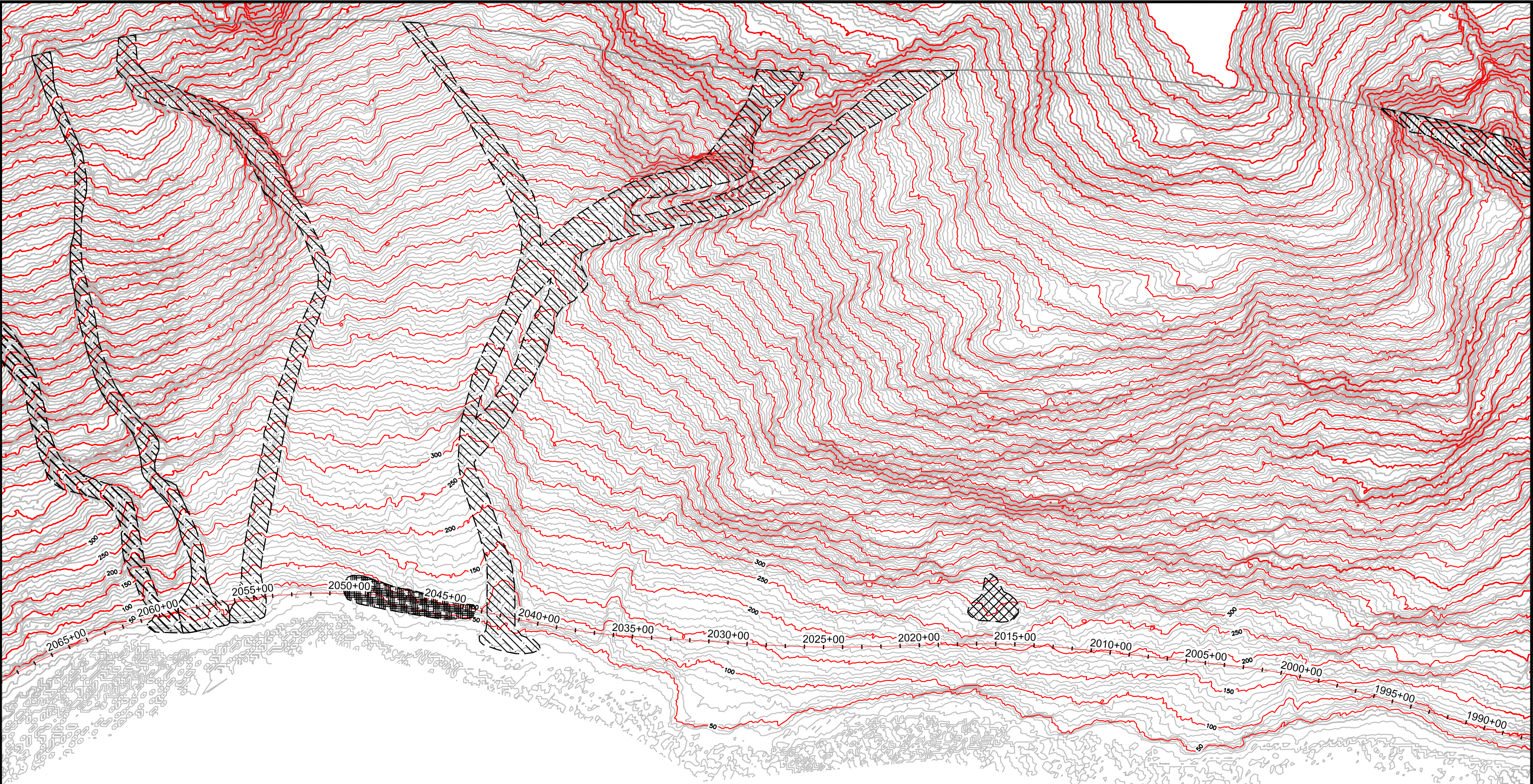
EXPLANATION:

---	APPROXIMATE HAZARD DELINEATION
SYMBOL GEOLOGIC HAZARD	
	DF - DEBRIS FLOW
	RF - ROCKFALL
	RS - ROCKSLIDE
	SR - SOIL RAVELING
	LS - LANDSLIDE
	HR - HAZARD ROCK
	UPSLOPE MAPPING BOUNDARY
1530+00	INERTIAL REFERENCE POINT
	2006 (IRP 2006) ALIGNMENT



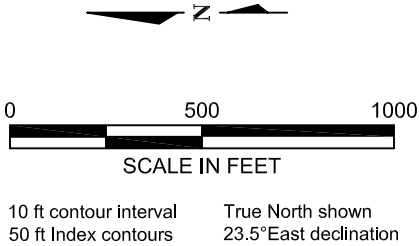
REFERENCE: Base map from LIDAR provided by ADOT&PF.

 Golder Associates Anchorage, Alaska	SCALE AS SHOWN	PRELIMINARY GEOLOGIC HAZARD MAP IRP 2006 1906+00 - 1987+00 LYNN CANAL, ALASKA	
	CADD AM/AF/EC		
	DATE 12/21/06		
	CHECK RGD	ADOT / LYNN CANAL HWY ZONE 4 / AK	
FILE No. 1 to 500 hazard.dwg	DATE 12/29/06		
PROJECT No. 063-5782	REV. 0	FIGURE 7	



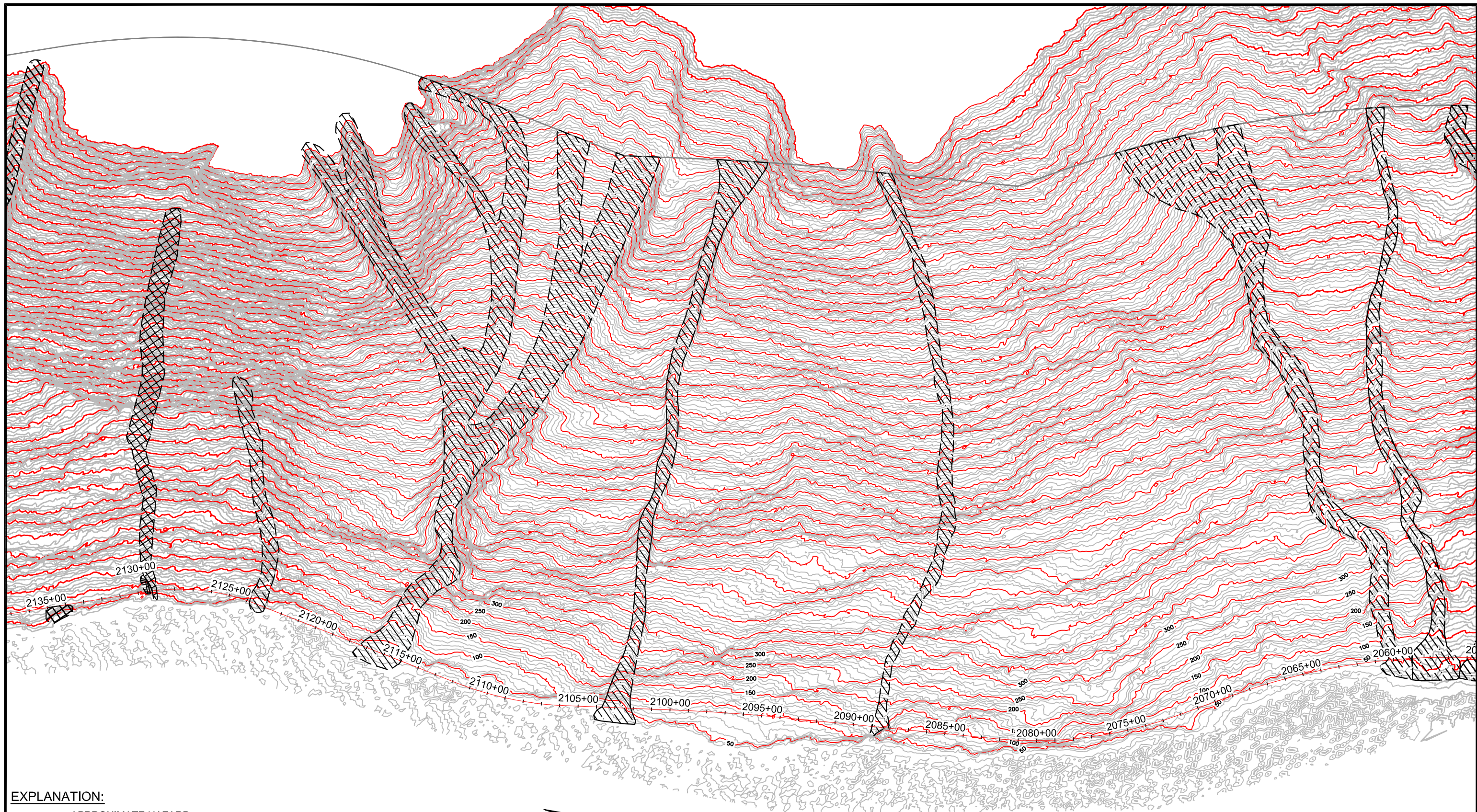
EXPLANATION:

- — APPROXIMATE HAZARD DELINEATION
- SYMBOL GEOLOGIC HAZARD
- | | | | |
|--|--------------------|--|---------------------------|
| | DF - DEBRIS FLOW | | UPSLOPE MAPPING BOUNDARY |
| | RF - ROCKFALL | | INERTIAL REFERENCE POINT |
| | RS - ROCKSLIDE | | 2006 (IRP 2006) ALIGNMENT |
| | SR - SOIL RAVELING | | |
| | LS - LANDSLIDE | | |
| | HR - HAZARD ROCK | | |



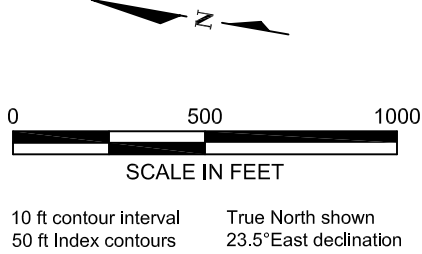
REFERENCE: Base map from LIDAR provided by ADOT&PF.

 Golder Associates Anchorage, Alaska	SCALE AS SHOWN	PRELIMINARY GEOLOGIC HAZARD MAP IRP 2006 1988+00 - 2068+00 LYNN CANAL, ALASKA	
	CADD AM/AF/EC		
	DATE 12/21/06		
	CHECK RGD	ADOT / LYNN CANAL HWY ZONE 4 / AK	
FILE No. 1 to 500 hazard.dwg	DATE 12/29/06		
PROJECT No. 063-5782	REV. 0	FIGURE 8	



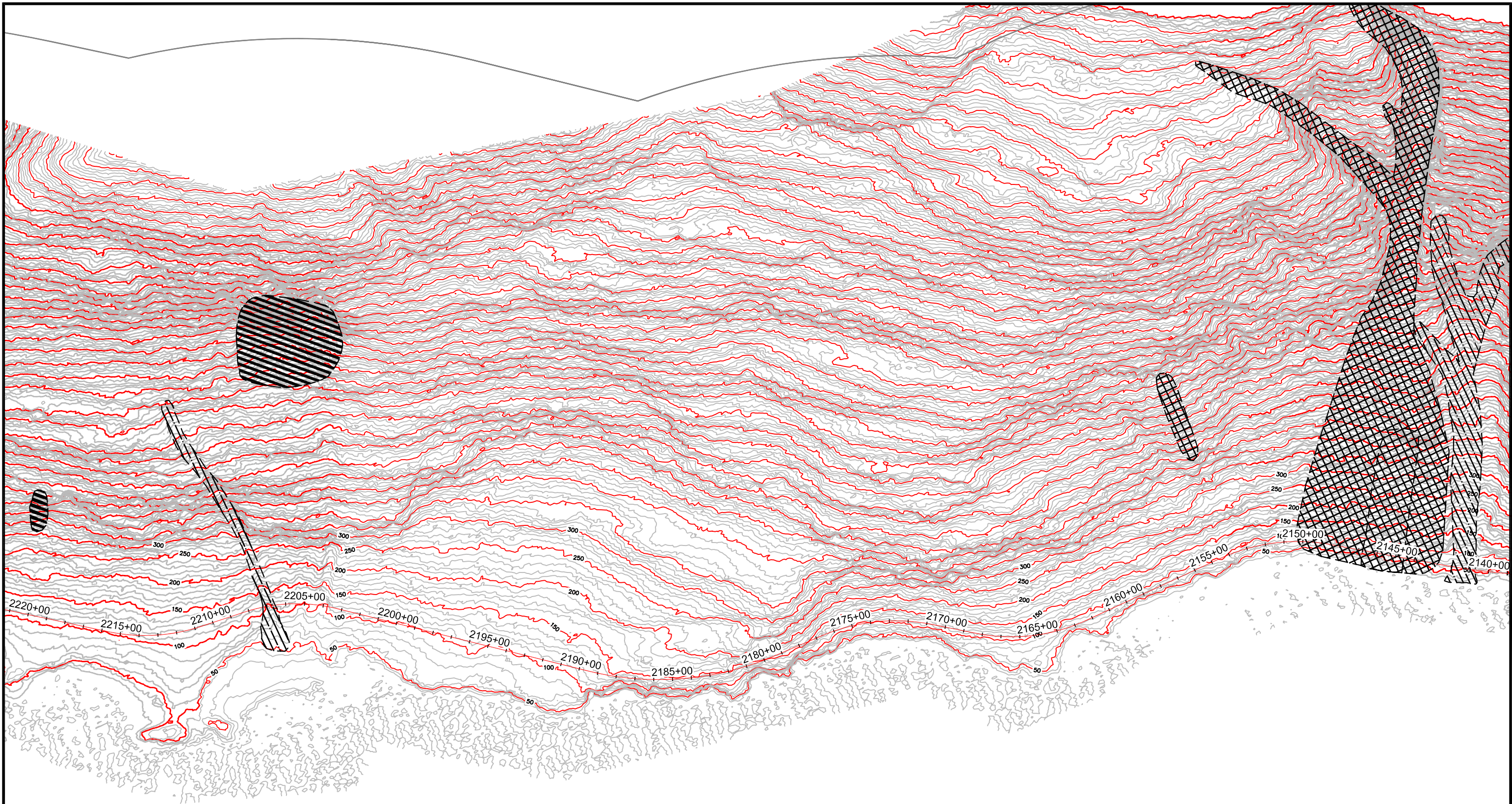
EXPLANATION:

---	APPROXIMATE HAZARD DELINEATION
SYMBOL GEOLOGIC HAZARD	
	DF - DEBRIS FLOW
	RF - ROCKFALL
	RS - ROCKSLIDE
	SR - SOIL RAVELING
	LS - LANDSLIDE
	HR - HAZARD ROCK
	UPSLOPE MAPPING BOUNDARY
	1530+00 INERTIAL REFERENCE POINT 2006 (IRP 2006) ALIGNMENT



REFERENCE: Base map from LIDAR provided by ADOT&PF.

 Golder Associates Anchorage, Alaska	SCALE AS SHOWN	TITLE PRELIMINARY GEOLOGIC HAZARD MAP IRP 2006 2056+00 - 2137+00 LYNN CANAL, ALASKA	
	CADD AM/AF/EC		
	DATE 12/21/06	ADOT / LYNN CANAL HWY ZONE 4 / AK	
	CHECK RGD		
FILE No. 1 to 500 hazard.dwg	DATE 12/29/06	FIGURE 9	
PROJECT No. 063-5782	REV. 0		



EXPLANATION:

- APPROXIMATE HAZARD
DELINEATION
- SYMBOL

GEOLOGIC HAZARD

DF - DEBRIS FLOW

RF - ROCKFALL

RS - ROCKSLIDE

SR - SOIL RAVELING

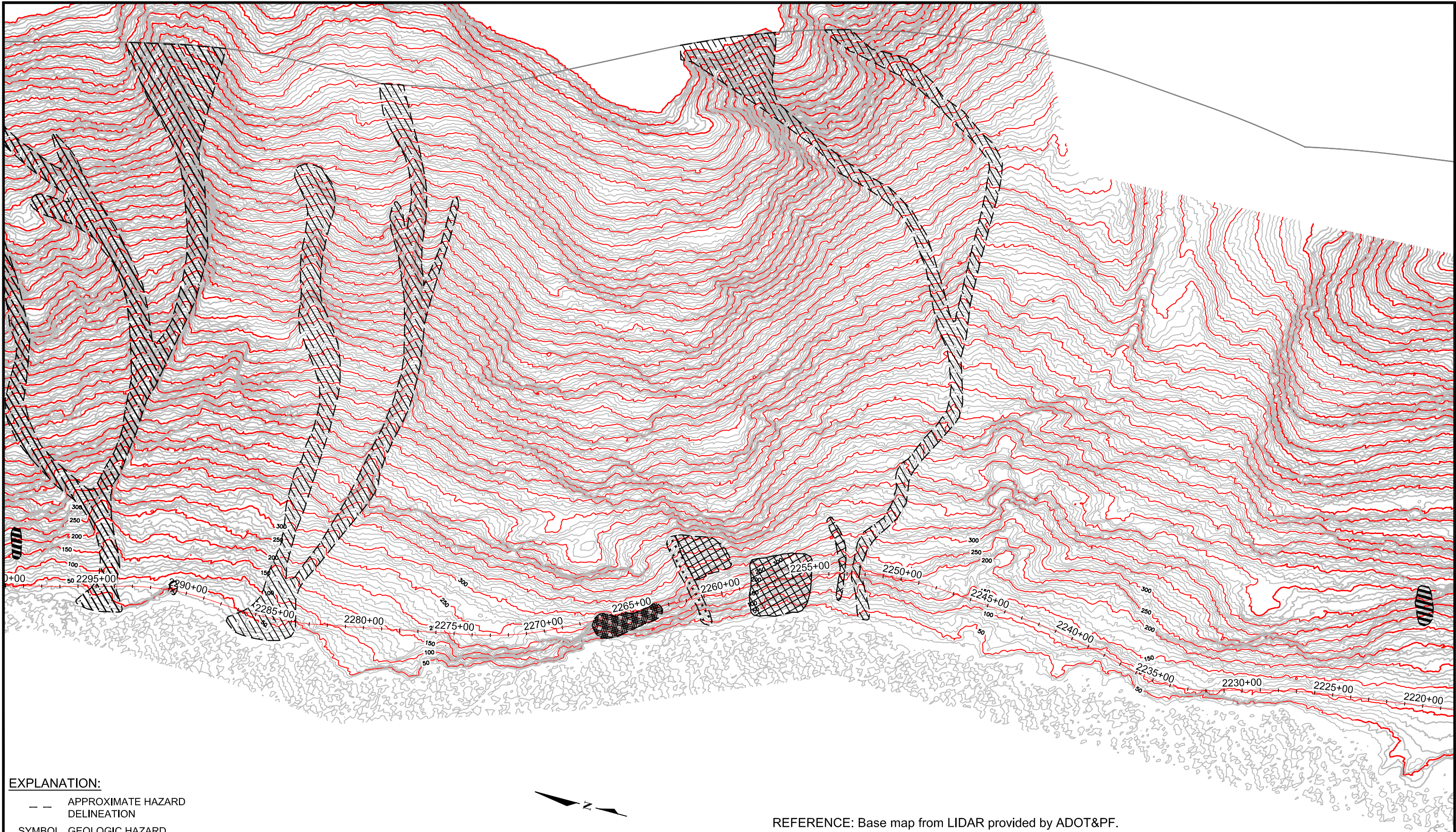
LS - LANDSLIDE

HR - HAZARD ROCK

1530+00

INERTIAL REFERENCE POINT
2006 (IRP 2006) ALIGNMENT

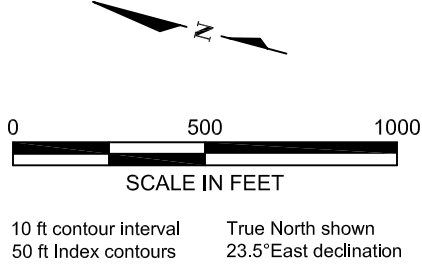
UPSLOPE MAPPING BOUNDARY
-
- REFERENCE: Base map from LIDAR provided by ADOT&PF.
- | | | | | |
|--|----------|------------|-----------------------------------|--|
| <div><div><div><div></div><div></div></div><div><div>Golder</div><div>Associates</div><div>Anchorage, Alaska</div></div></div></div> | SCALE | AS SHOWN | TITLE | PRELIMINARY GEOLOGIC
HAZARD MAP
IRP 2006 2139+00-2221+00
LYNN CANAL, ALASKA |
| | CADD | AM/AF/EC | | |
| | DATE | 12/21/06 | | |
| | CHECK | RGD | ADOT / LYNN CANAL HWY ZONE 4 / AK | FIGURE 10 |
| FILE No. | 1 to 500 | hazard.dwg | | |
| PROJECT No. | 063-5782 | REV. | 0 | |




EXPLANATION:

- APPROXIMATE HAZARD
DELINEATION
- SYMBOL

GEOLOGIC HAZARD
- DF - DEBRIS FLOW
- RF - ROCKFALL
- RS - ROCKSLIDE
- SR - SOIL RAVELING
- LS - LANDSLIDE
- HR - HAZARD ROCK
- UPSLOPE MAPPING BOUNDARY
- 1530+00
INERTIAL REFERENCE POINT
2006 (IRP 2006) ALIGNMENT



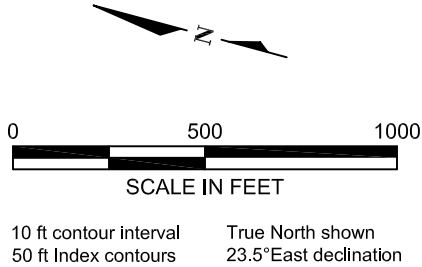
REFERENCE: Base map from LIDAR provided by ADOT&PF.

 Golder Associates Anchorage, Alaska	SCALE AS SHOWN	PRELIMINARY GEOLOGIC HAZARD MAP IRP 2006 2219+00-2300+00 LYNN CANAL, ALASKA	
	CADD AM/AF/EC		
	DATE 12/21/06		
	CHECK RGD	ADOT / LYNN CANAL HWY ZONE 4 / AK	
FILE No. 1 to 500 hazard.dwg	DATE 12/29/06		
PROJECT No. 063-5782	REV. 0	FIGURE 11	



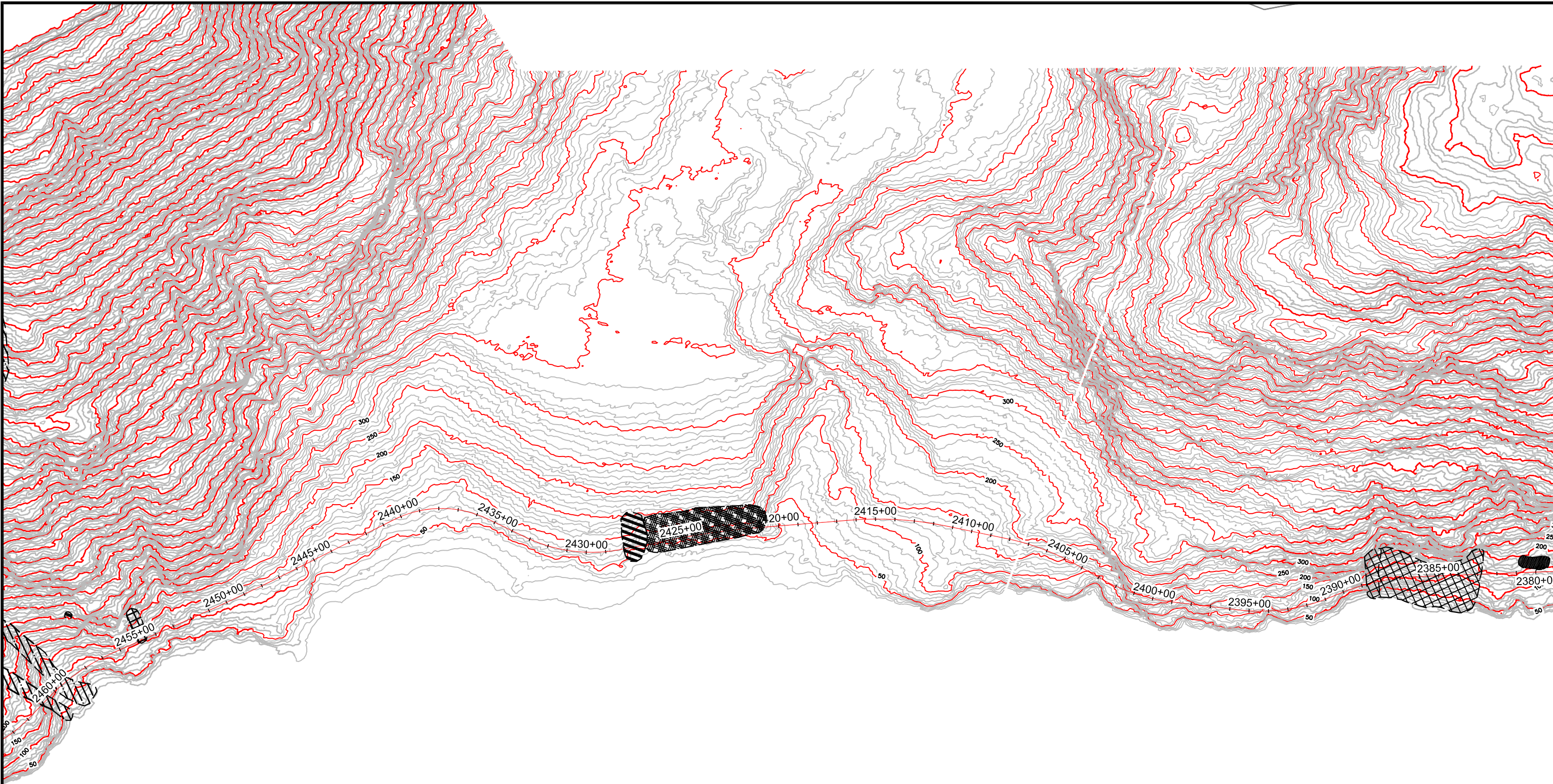
EXPLANATION:

---	APPROXIMATE HAZARD DELINEATION
SYMBOL GEOLOGIC HAZARD	
	DF - DEBRIS FLOW
	RF - ROCKFALL
	RS - ROCKSLIDE
	SR - SOIL RAVELING
	LS - LANDSLIDE
	HR - HAZARD ROCK
	UPSLOPE MAPPING BOUNDARY
	INERTIAL REFERENCE POINT 2006 (IRP 2006) ALIGNMENT



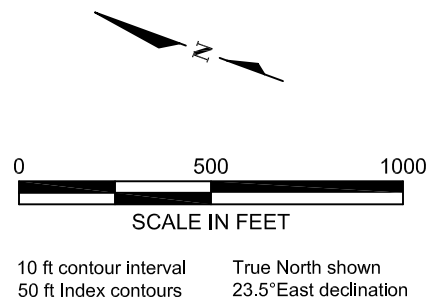
REFERENCE: Base map from LIDAR provided by ADOT&PF.

 Golder Associates Anchorage, Alaska	SCALE AS SHOWN	PRELIMINARY GEOLOGIC HAZARD MAP IRP 2006 2301+00 - 2381+00 LYNN CANAL, ALASKA	
	CADD AM/AF/EC		
	DATE 12/21/06		
	CHECK RGD	ADOT / LYNN CANAL HWY ZONE 4 / AK	
FILE No. 1 to 500 hazard.dwg	DATE 12/29/06		
PROJECT No. 063-5782	REV. 0	FIGURE 12	



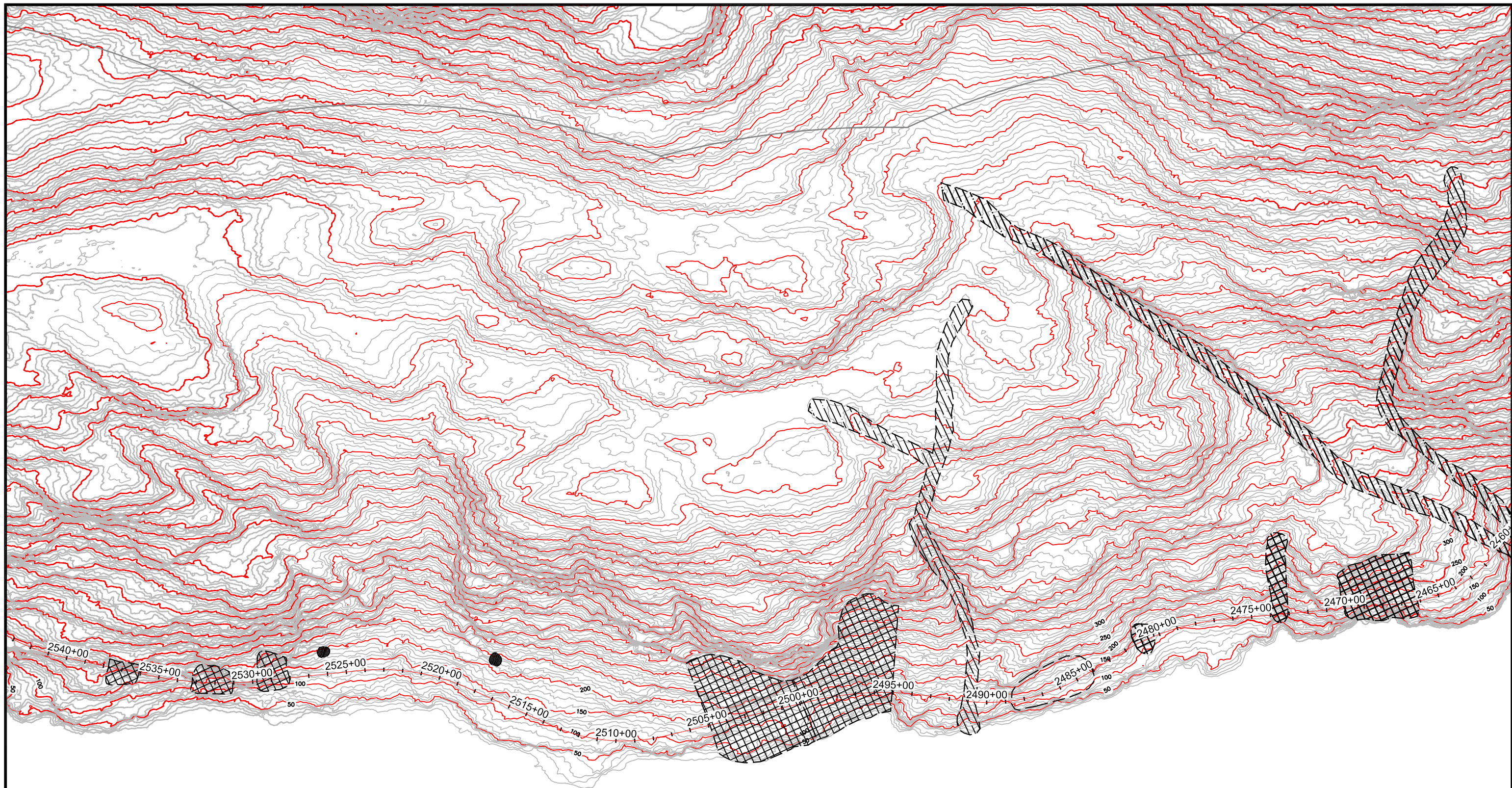
EXPLANATION:

---	APPROXIMATE HAZARD DELINEATION
SYMBOL GEOLOGIC HAZARD	
	DF - DEBRIS FLOW
	RF - ROCKFALL
	RS - ROCKSLIDE
	SR - SOIL RAVELING
	LS - LANDSLIDE
	HR - HAZARD ROCK
	UPSLOPE MAPPING BOUNDARY
	INERTIAL REFERENCE POINT 2006 (IRP 2006) ALIGNMENT



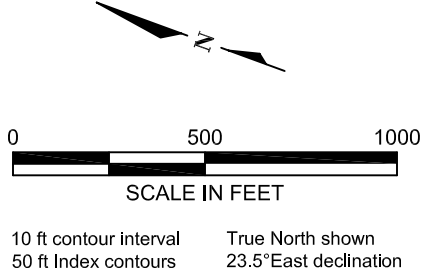
REFERENCE: Base map from LIDAR provided by ADOT&PF.

 Golder Associates Anchorage, Alaska	SCALE AS SHOWN	PRELIMINARY GEOLOGIC HAZARD MAP IRP 2006 2379+00 - 2463+00 LYNN CANAL, ALASKA	
	CADD AM/AF/EC		
	DATE 12/21/06		
	CHECK RGD	ADOT / LYNN CANAL HWY ZONE 4 / AK	
FILE No. 1 to 500 hazard.dwg	DATE 12/29/06		
PROJECT No. 063-5782	REV. 0	FIGURE 13	



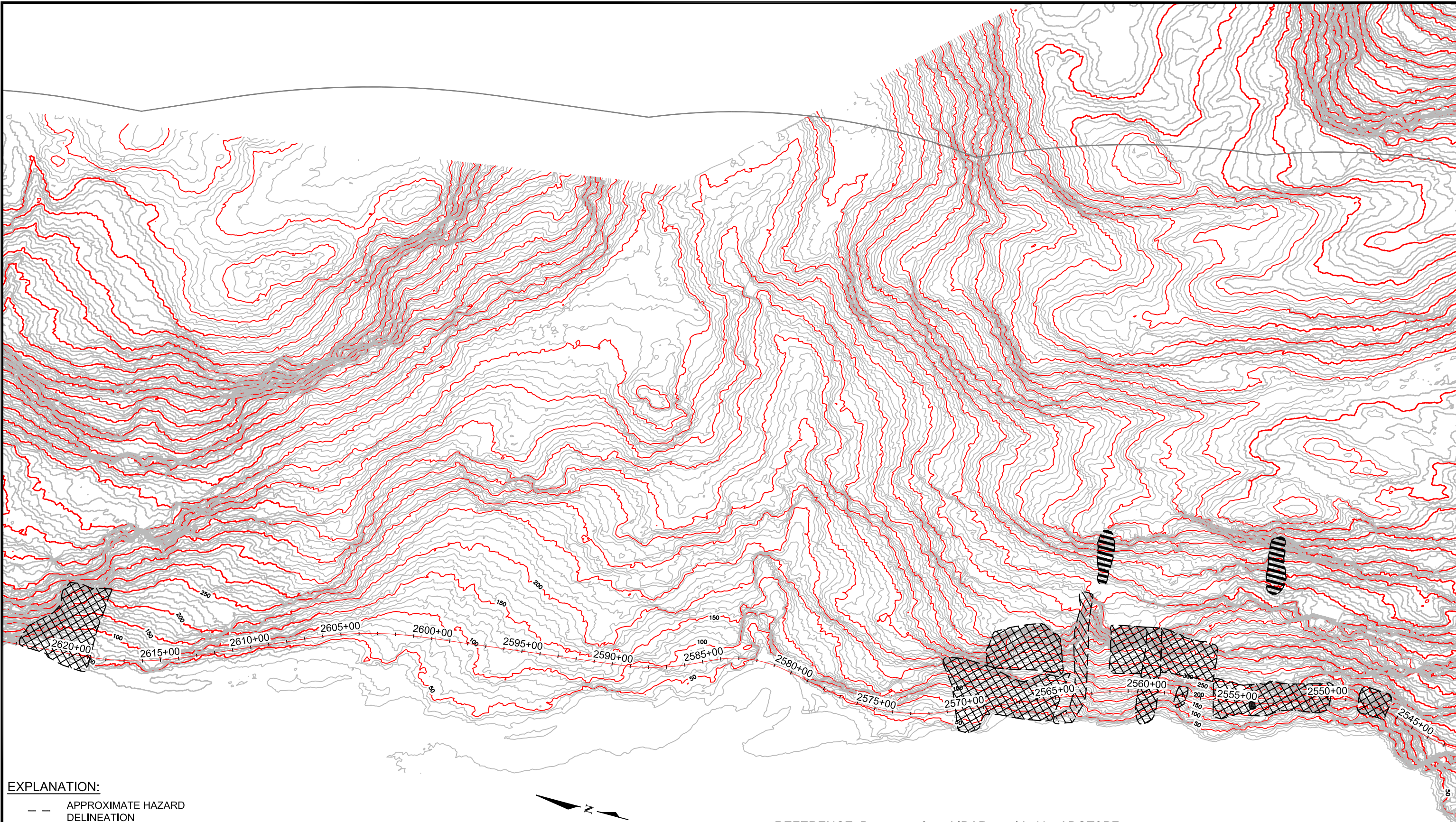
EXPLANATION:

- — APPROXIMATE HAZARD DELINEATION
- SYMBOL** **GEOLOGIC HAZARD**
- | | | | |
|--|--------------------|--|---------------------------|
| | DF - DEBRIS FLOW | | UPSLOPE MAPPING BOUNDARY |
| | RF - ROCKFALL | | INERTIAL REFERENCE POINT |
| | RS - ROCKSLIDE | | 2006 (IRP 2006) ALIGNMENT |
| | SR - SOIL RAVELING | | |
| | LS - LANDSLIDE | | |
| | HR - HAZARD ROCK | | |



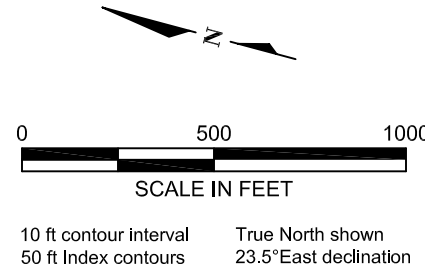
REFERENCE: Base map from LIDAR provided by ADOT&PF.

Golder Associates Anchorage, Alaska	SCALE AS SHOWN	PRELIMINARY GEOLOGIC HAZARD MAP IRP 2006 2461+00 - 2543+00 LYNN CANAL, ALASKA	
	CADD AM/AF/EC		
	DATE 12/21/06		
	CHECK RGD	ADOT / LYNN CANAL HWY ZONE 4 / AK	
FILE No. 1 to 500 hazard.dwg	DATE 12/29/06		
PROJECT No. 063-5782	REV. 0	FIGURE 14	



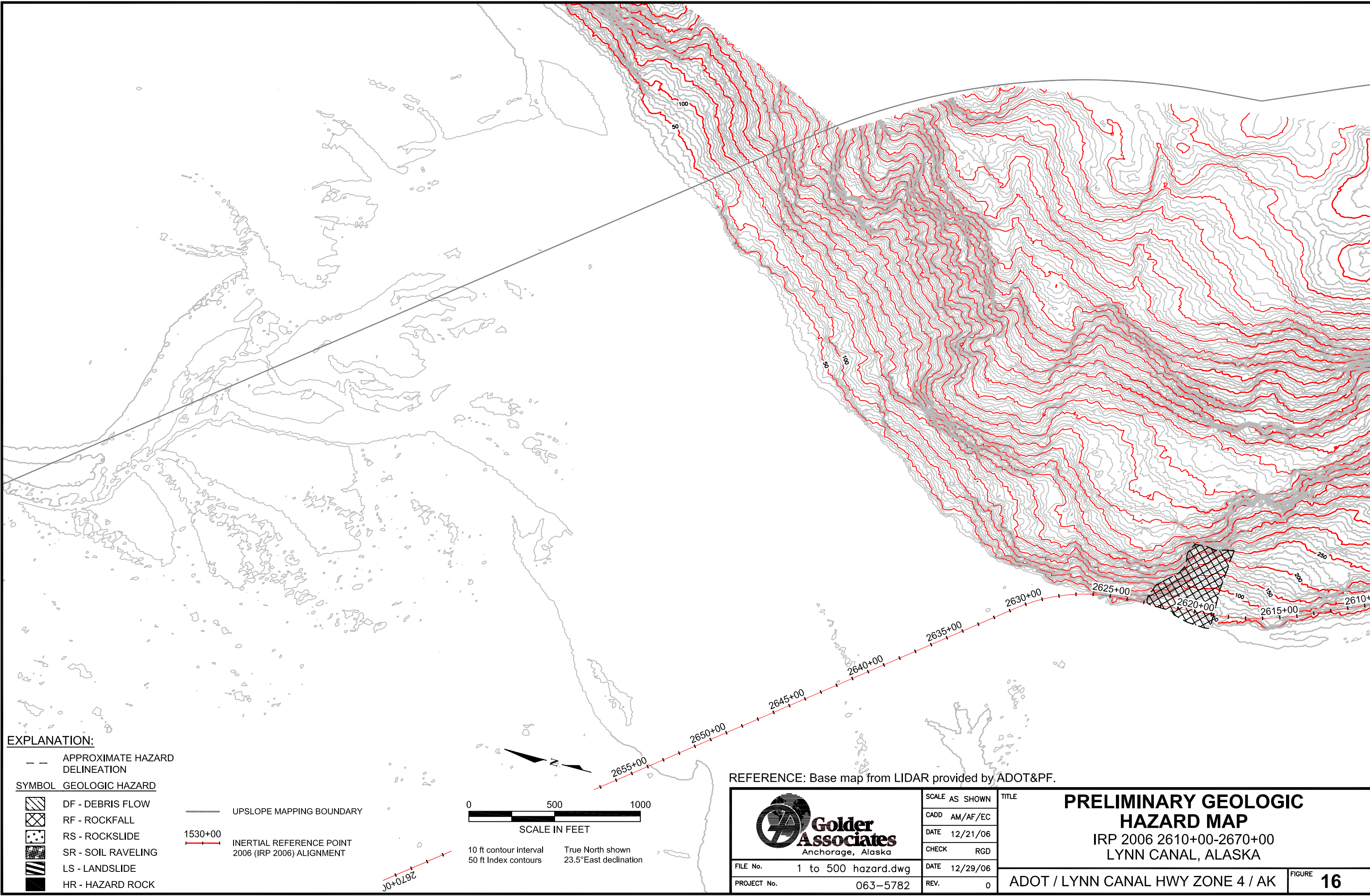
EXPLANATION:

- — APPROXIMATE HAZARD DELINEATION
- SYMBOL GEOLOGIC HAZARD
- | | | | |
|--|--------------------|--|----------------------------------|
| | DF - DEBRIS FLOW | | UPSLOPE MAPPING BOUNDARY |
| | RF - ROCKFALL | | 1530+00 INERTIAL REFERENCE POINT |
| | RS - ROCKSLIDE | | 2006 (IRP 2006) ALIGNMENT |
| | SR - SOIL RAVELING | | |
| | LS - LANDSLIDE | | |
| | HR - HAZARD ROCK | | |



REFERENCE: Base map from LIDAR provided by ADOT&PF.

 Golder Associates Anchorage, Alaska	SCALE AS SHOWN	PRELIMINARY GEOLOGIC HAZARD MAP IRP 2006 2543+00 - 2623+00 LYNN CANAL, ALASKA	
	CADD AM/AF/EC		
	DATE 12/21/06		
	CHECK RGD	ADOT / LYNN CANAL HWY ZONE 4 / AK	
FILE No. 1 to 500 hazard.dwg	DATE 12/29/06		
PROJECT No. 063-5782	REV. 0	FIGURE 15	

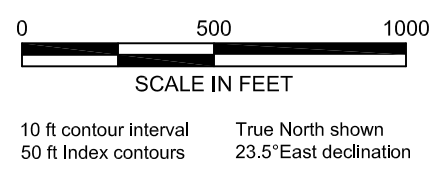


EXPLANATION:


- APPROXIMATE HAZARD
DELINEATION
- SYMBOL

GEOLOGIC HAZARD
- DF - DEBRIS FLOW
- RF - ROCKFALL
- RS - ROCKSLIDE
- SR - SOIL RAVELING
- LS - LANDSLIDE
- HR - HAZARD ROCK
- UPSLOPE MAPPING BOUNDARY
- 1530+00

INERTIAL REFERENCE POINT
2006 (IRP 2006) ALIGNMENT



REFERENCE: Base map from LIDAR provided by ADOT&PF.

 Golder Associates Anchorage, Alaska	SCALE AS SHOWN	PRELIMINARY GEOLOGIC HAZARD MAP IRP 2006 2610+00-2670+00 LYNN CANAL, ALASKA	
	CADD AM/AF/EC		
	DATE 12/21/06		
	CHECK RGD	ADOT / LYNN CANAL HWY ZONE 4 / AK	
FILE No. 1 to 500 hazard.dwg	DATE 12/29/06		
PROJECT No. 063-5782	REV. 0	FIGURE 16	