

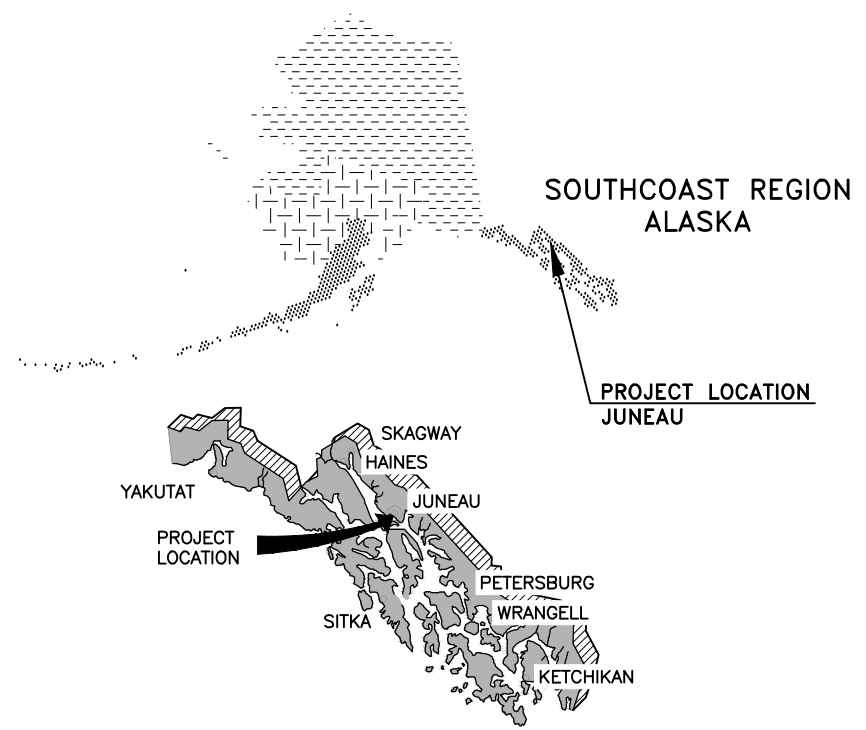
NO.	DATE	REVISION	STATE	PROJECT DESIGNATION	YEAR	SHEET NO.	TOTAL SHEETS
			ALASKA	SFHWHY00701 / 0003321	2026	A1	12
			CDS ROUTE: 296154	MILEPOINT: 0.00 TO 5.891			

STATE OF ALASKA
DEPARTMENT OF TRANSPORTATION
&
PUBLIC FACILITIES

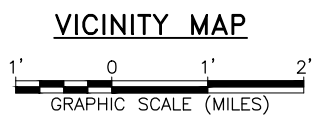
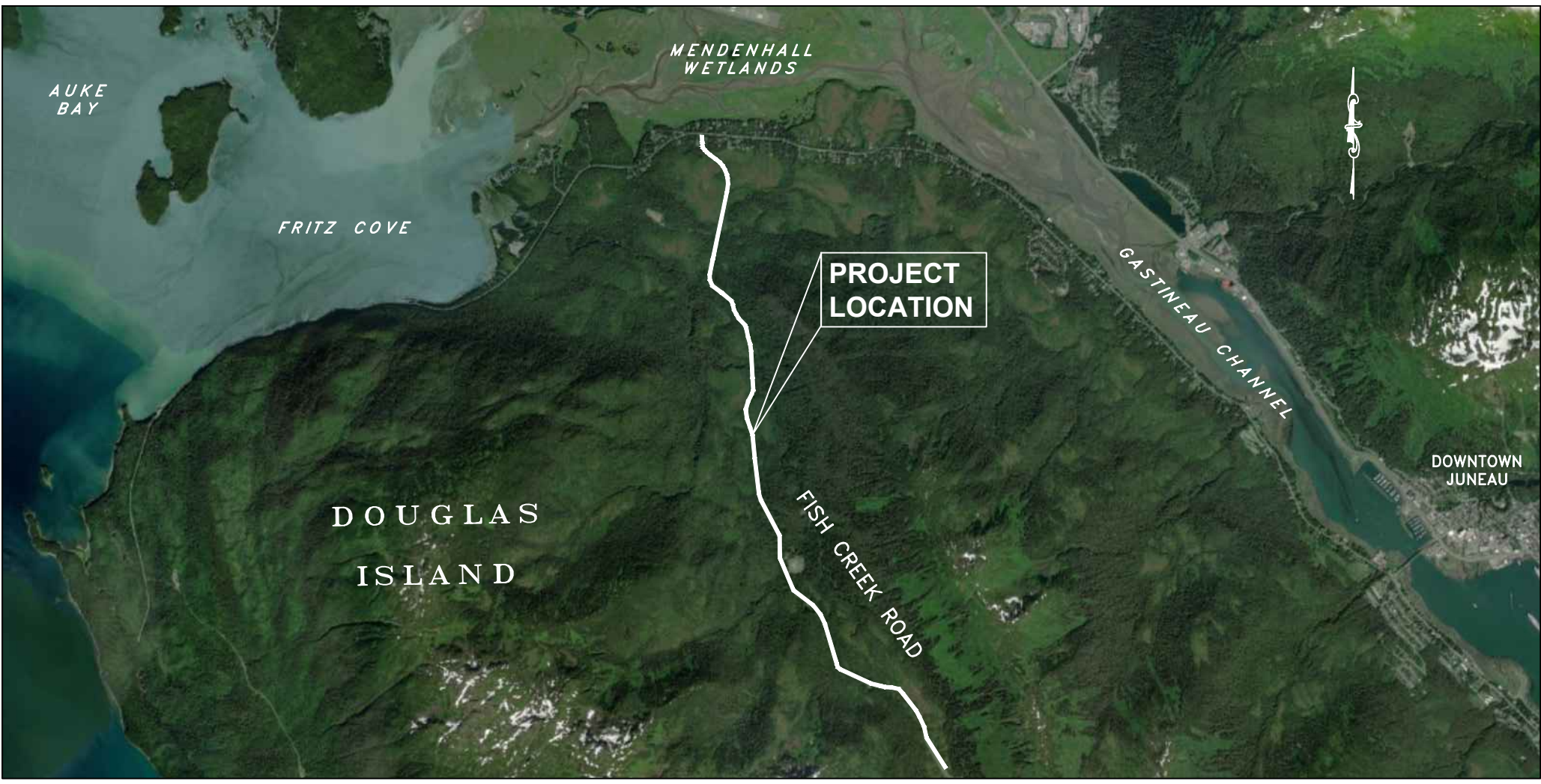
DESIGN DESIGNATIONS	
ADT (2024)	320
ADT (2037)	341
DHV (2024)	35
PERCENT TRUCKS (T)	1.97%
DIRECTIONAL SPLIT (D)	61%
DESIGN SPEED (V)	35 MPH

PROJECT SUMMARY	
WIDTH OF ROADWAY	28 FEET
LENGTH OF ROADWAY	5.89 MILES
LENGTH OF PROJECT	5.89 MILES

INDEX OF SHEETS	
SHEET NO.	DESCRIPTION
A1	TITLE SHEET
A2	ESTIMATE, LEGEND, SHEET LAYOUT & INDEX
B1	TYPICAL SECTIONS
C1	ESTIMATE OF QUANTITIES
D1	DETAILS
F1-6	PLAN SHEETS
T1	TRAFFIC CONTROL PLANS



PROPOSED HIGHWAY PROJECT
JNU FISH CREEK ROAD REPAIRS
PROJECT NO. SFHWHY00701/000321
PAVING, SPOT REPAIR, DITCH RECONDITIONING



JOEL OSBURN, P.E., PROJECT MANAGER
RYAN PEYTON, DESIGNER

STATE OF ALASKA
DEPARTMENT OF TRANSPORTATION
&
PUBLIC FACILITIES
APPROVED BY: **25% REVIEW** DATE _____
Kirk Miller, P.E.
Preconstruction Engineer, Southcoast Region
ACCEPTED FOR CONSTRUCTION: _____ DATE _____
Christopher Goins, P.E., C.M.
Regional Director, Southcoast Region

HWYS TITLE SHEET
C:\jnu\SFHWHY00701\PlanSet\JNU0701_A1-A1_Thu_May_14_26_05:24pm

NO.	DATE	REVISION	STATE	PROJECT DESIGNATION	YEAR	SHEET NO.	TOTAL SHEETS
			ALASKA	SFHWHY00701 / 0003321	2026	A2	12

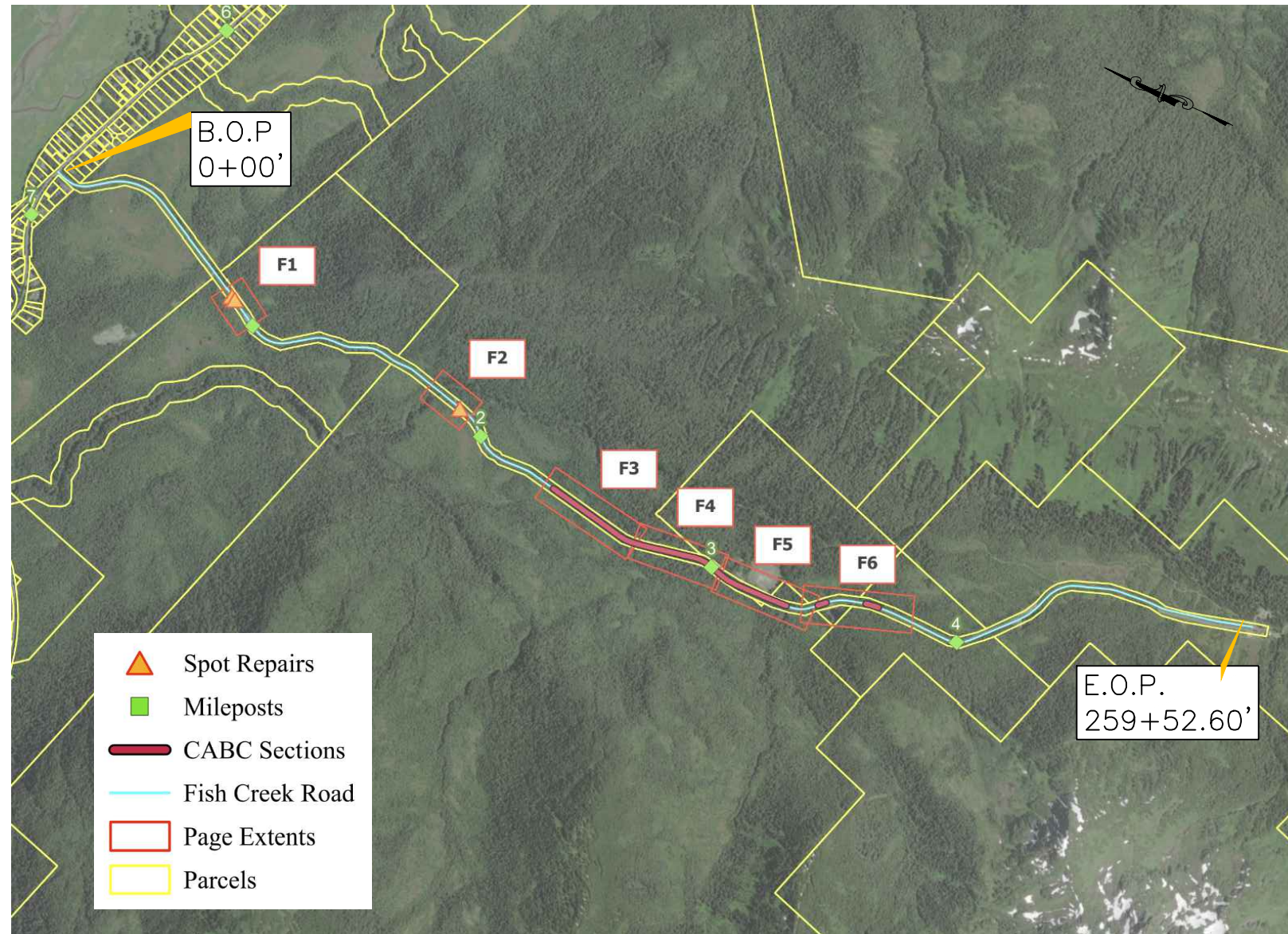
ABBREVIATIONS

ADF&G	ALASKA DEPARTMENT OF FISH & GAME
ADT	AVERAGE DAILY TRAFFIC
AK	ALASKA
ASDS	ALASKA SIGN DESIGN SPECIFICATION
BOP	BEGINNING OF PROJECT
CLR	CLEARANCE
CLSM	CONTROLLED LOW STRENGTH MATERIAL
CMP	CORRUGATED METAL PIPE
CPP	CORRUGATED POLYETHYLENE PIPE
CY	CUBIC YARD
DHV	DESIGN HOURLY VOLUME
DIA	DIAMETER
DWG	DRAWING
(E)	EXISTING
EOP	END OF PROJECT
ESAL	EQUIVALENT SINGLE AXLE LOAD
FT	FOOT
GALV	GALVANIZED
GRAIL	GUARD RAIL
HMA	HOT MIX ASPHALT
MIN	MINIMUM
MMA	METHYL METHACRYLATE
MPH	MILES PER HOUR
M&O	MAINTENANCE AND OPERATIONS
NTE	NOT TO EXCEED
N.T.S.	NOT TO SCALE
PC	POINT OF CURVATURE
PCE	PERMANENT CONSTRUCTION EASEMENT
PE	PROFESSIONAL ENGINEER
P.O.C.	POINT ON CURVE
PT	POINT OF TANGENCY
SF	SQUARE FOOT
SHLDR	SHOULDER
SHT	SHEET
SPECS	SPECIFICATIONS
STA	STATION
STD	TEMPORARY CONSTRUCTION EASEMENT
TCE	STANDARD
TCP	TRAFFIC CONTROL PLAN
TYP	TYPICAL

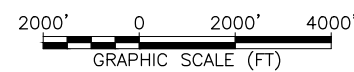
THE FOLLOWING ALASKA STANDARD PLANS APPLY TO THIS PROJECT:
C-06.00

GENERAL NOTES:

1. THIS PROJECT HAS NO SURVEY. INFORMATION CONTAINED IN THESE DOCUMENTS HAS BEEN COMPILED FROM AS-BUILT DRAWINGS.
3. THE CENTERLINE ALIGNMENT FOR FISH CREEK ROAD IS TAKEN FROM THE 2001 AS-BUILT DRAWINGS, AND A REFERENCE POINT IS USED FOR FIELD VERIFICATION - AT THE INTERSECTION OF CENTERLINES OF FISH CREEK ROAD AND NORTH DOUGLAS HIGHWAY. THE CONTRACTOR SHALL REESTABLISH SURVEY CONTROL DURING CONSTRUCTION.
4. CONTAIN ALL CONSTRUCTION WITHIN THE RIGHT-OF-WAY. DO NOT DISPOSE OF EXCESS MATERIAL WITHIN THE RIGHT-OF-WAY, UNLESS SPECIFICALLY CALLED FOR IN THE PLANS.



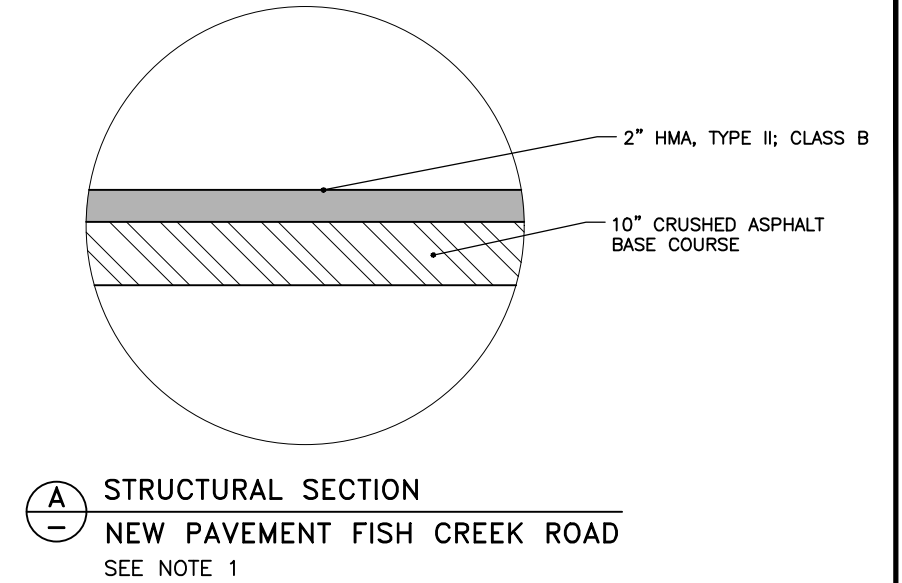
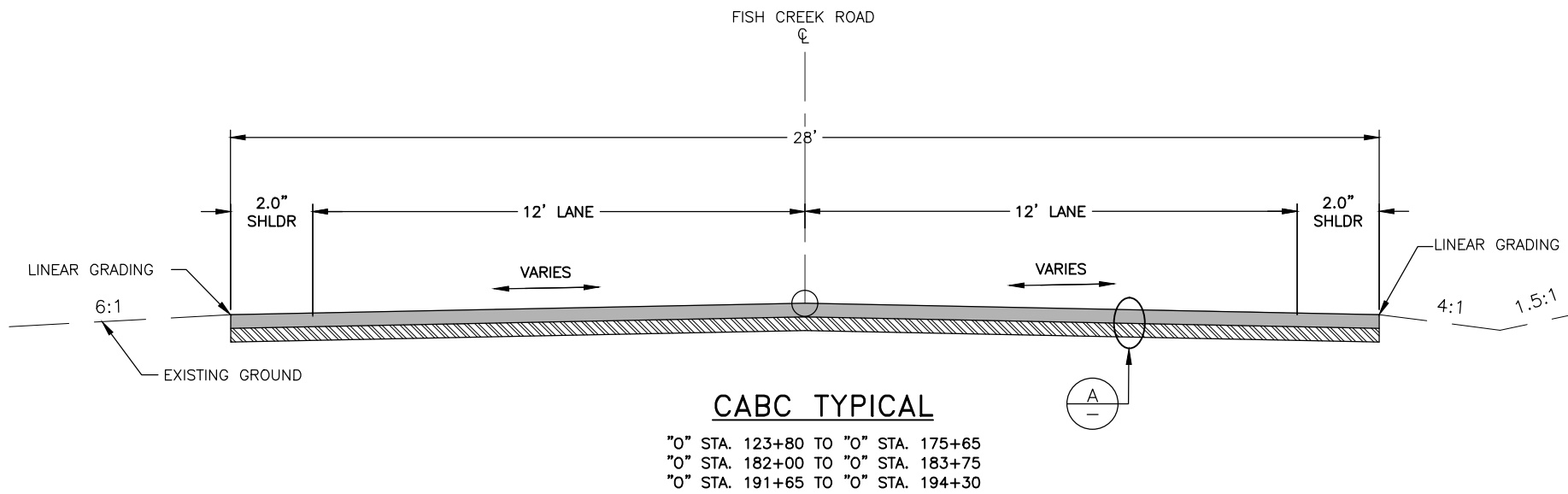
KEY MAP



LEGEND, & SHEET LAYOUT

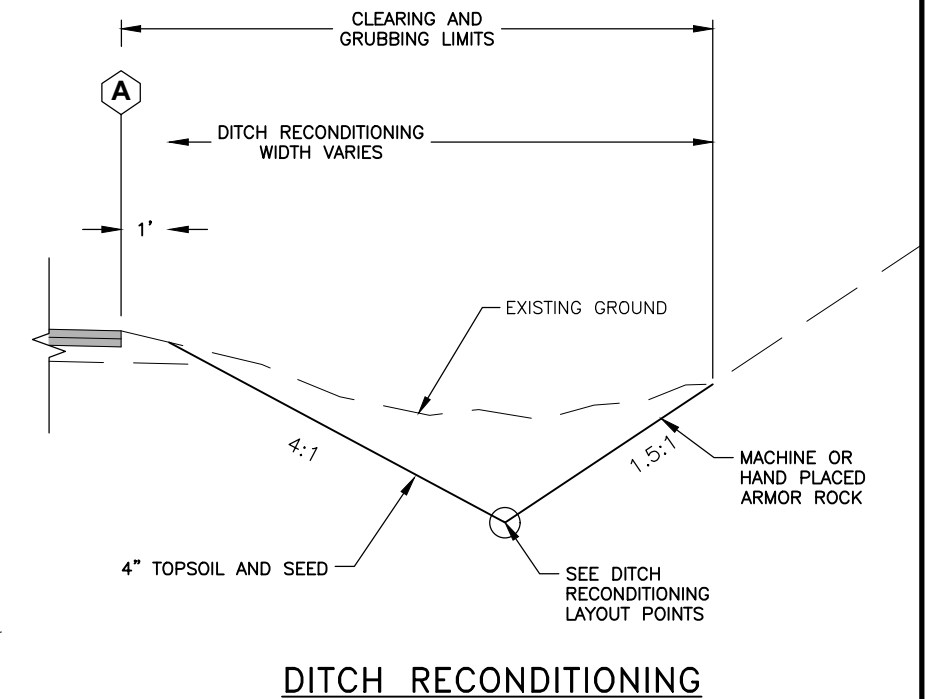
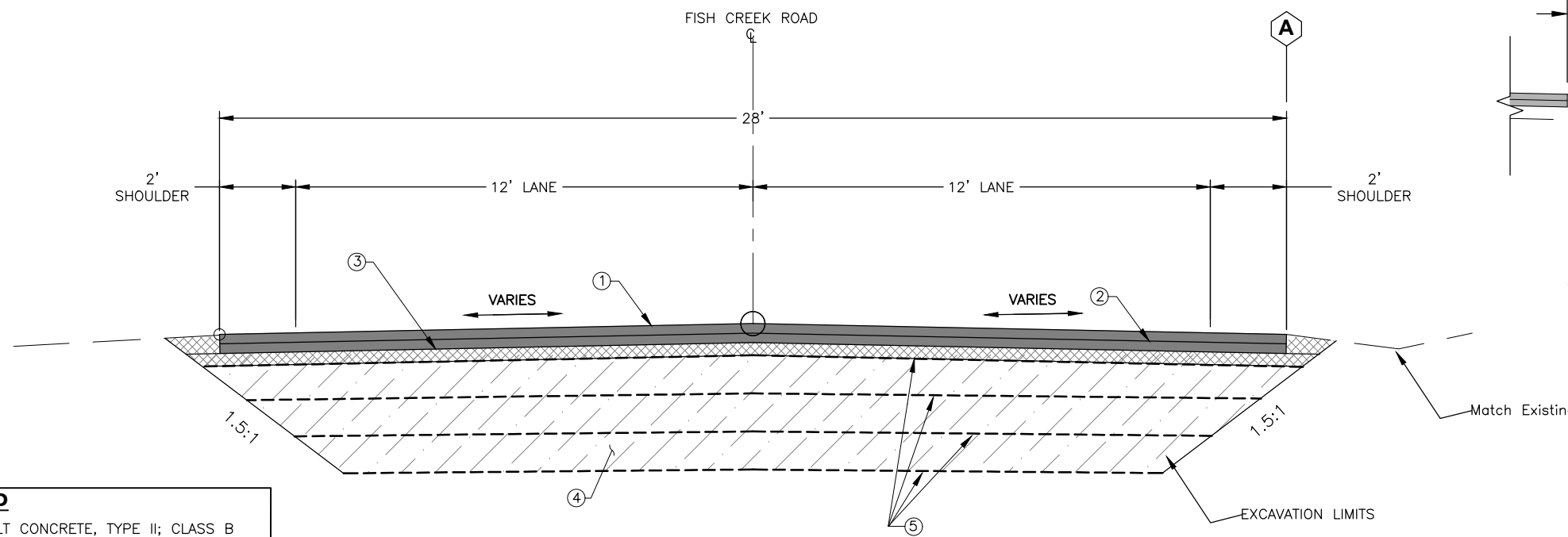
**25%
REVIEW**

NO.	DATE	REVISION	STATE	PROJECT DESIGNATION	YEAR	SHEET NO.	TOTAL SHEETS
			ALASKA	SFHWHY00701 / 0003321	2026	B1	12



NOTE:

1. CRUSHED ASPHALT BASE COURSE (CABC) CONSISTS OF PULVERIZING EXISTING ASPHALT PAVEMENT, ATB AND BASE COURSE TO A DEPTH OF 10 INCHES BELOW EXISTING SURFACE, THEN PLACING AND COMPACTING 10 INCHES OF CABC BACK.

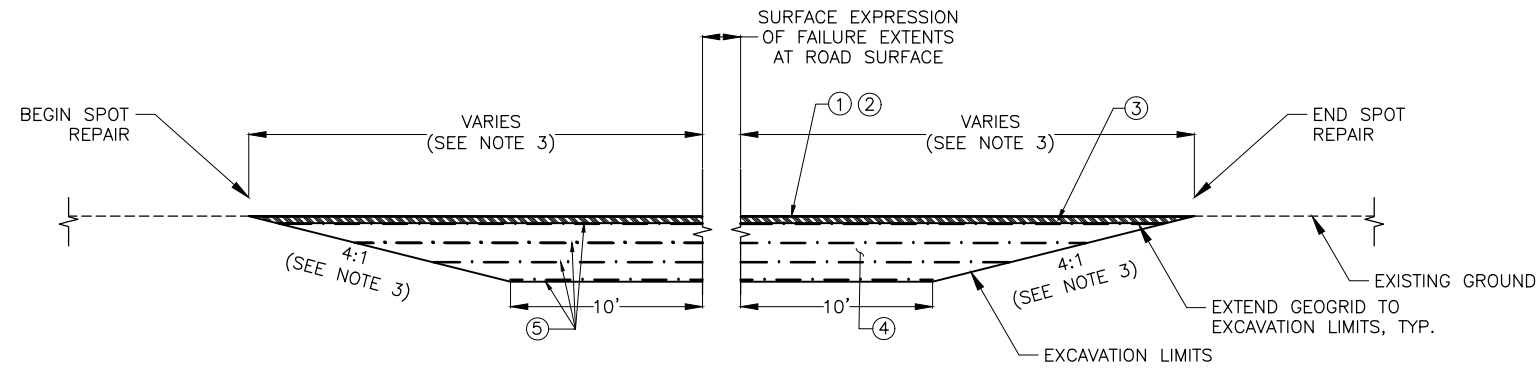


LEGEND	
①	4" ASPHALT CONCRETE, TYPE II; CLASS B
②	TACK COAT
③	6" AGGREGATE BASE COURSE, GRADING D-1
④	36" SELECTED MATERIAL TYPE A
⑤	GEOGRID REINFORCEMENT, CLASS 1

TYPICAL SECTIONS

25%
REVIEW

NO.	DATE	REVISION	STATE	PROJECT DESIGNATION	YEAR	SHEET NO.	TOTAL SHEETS
			ALASKA	SFHWHY00701 / 0003321	2026	D1	12



SPOT REPAIR TRANSITION DETAIL

LEGEND	
①	4" ASPHALT CONCRETE, TYPE II; CLASS B
②	TACK COAT
③	6" AGGREGATE BASE COURSE, GRADING D-1
④	36" SELECTED MATERIAL TYPE A
⑤	GEOGRID REINFORCEMENT, CLASS 1

GENERAL SPOT REPAIR NOTES:

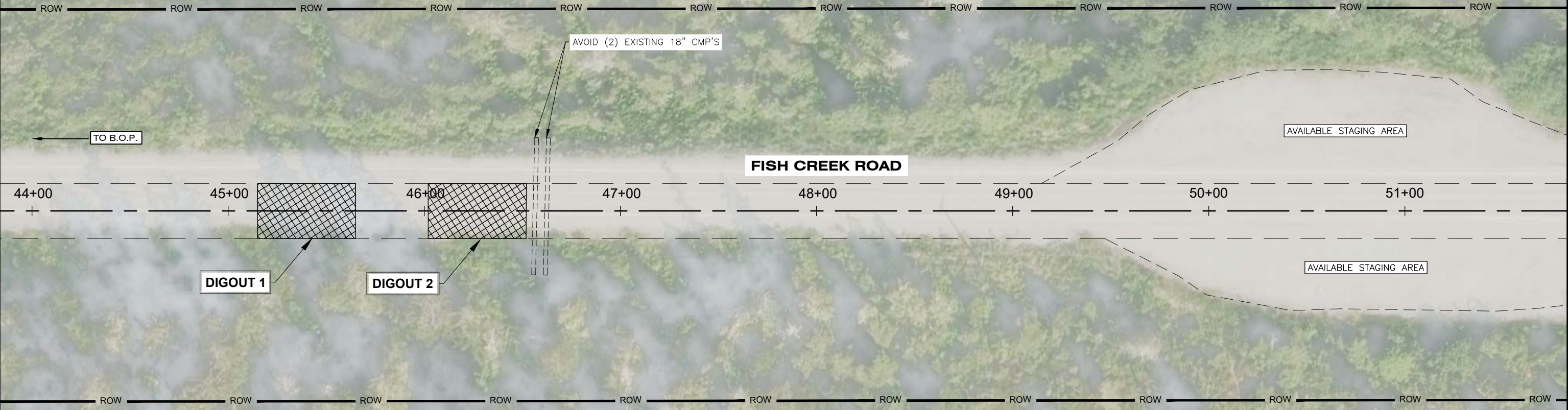
1. CONTRACTOR SHALL FIELD VERIFY LOCATION OF UTILITIES PRIOR TO BEGINNING EARTHWORK.
2. THE DEPARTMENT WILL ASSIST THE ENGINEER IN VERIFYING THE LOCATIONS OF THESE REPAIR AREAS IN THE FIELD PRIOR TO BEGINNING EARTHWORK.
3. PROFILE SLOPE IS SHOWN FOR A CLOSED WORKZONE. A 10:1 SLOPE IS REQUIRED WHEN OPENING THE EXCAVATION TO TRAFFIC DURING CONSTRUCTION.

PLANS DEVELOPED BY: STATE OF ALASKA DEPARTMENT OF TRANSPORTATION & PUBLIC FACILITIES, SOUTHCOAST REGION, 6860 GLACIER HWY, JUNEAU, AK 99801 (907)465-1763
 Q:\nu\SFHWHY00701\PlanSet\JUN0701_D1-D1_Thu_May/14/26 05:32pm

DETAILS

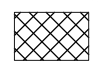
**25%
REVIEW**

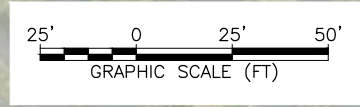
NO.	DATE	REVISION	STATE	PROJECT DESIGNATION	YEAR	SHEET NO.	TOTAL SHEETS
			ALASKA	SFHWHY00701 / 0003321	2026	F1	12



PLANS DEVELOPED BY: STATE OF ALASKA DEPARTMENT OF TRANSPORTATION & PUBLIC FACILITIES, SOUTHCOST REGION, 6860 GLACIER HWY, JUNEAU, AK 99801 (907)465-1763
 Q:\jnu\SFHWHY00701\PlanSet\JNU0701_F1-6-F1_Thu, Apr/30/26 03:25pm

LEGEND

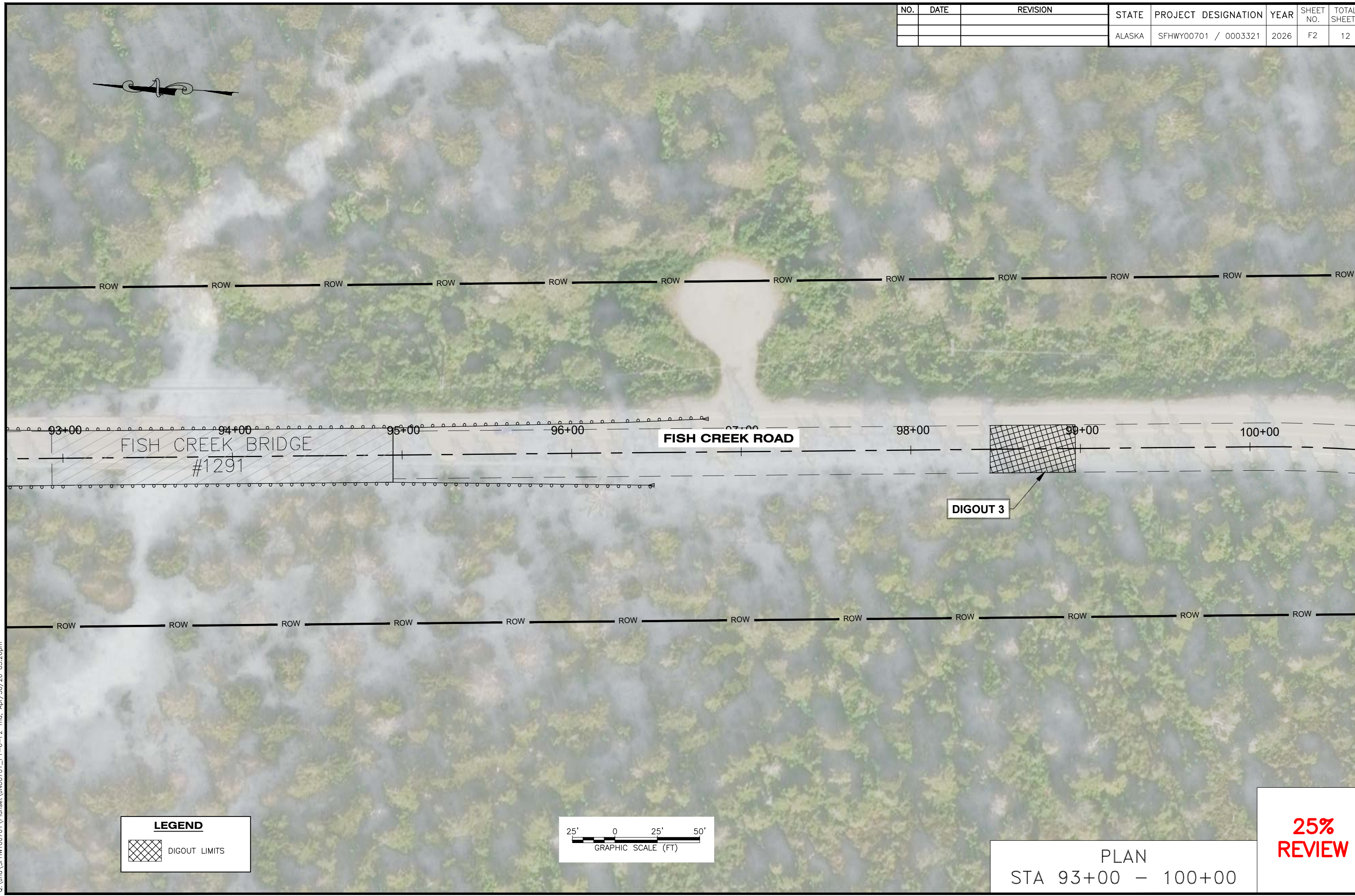
 DIGOUT LIMITS



PLAN
STA 44+00 - 51+50

**25%
REVIEW**

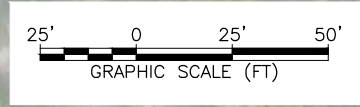
NO.	DATE	REVISION	STATE	PROJECT DESIGNATION	YEAR	SHEET NO.	TOTAL SHEETS
			ALASKA	SFH00701 / 0003321	2026	F2	12



PLANS DEVELOPED BY: STATE OF ALASKA DEPARTMENT OF TRANSPORTATION & PUBLIC FACILITIES, SOUTHCOST REGION, 8860 GLACIER HWY., JUNEAU, AK 99801 (907)465-1763
 Q:\jnu\SFH00701\PlanSet\JNU0701_F1_6-F2_Thu_Apr/30/26 03:26pm

LEGEND

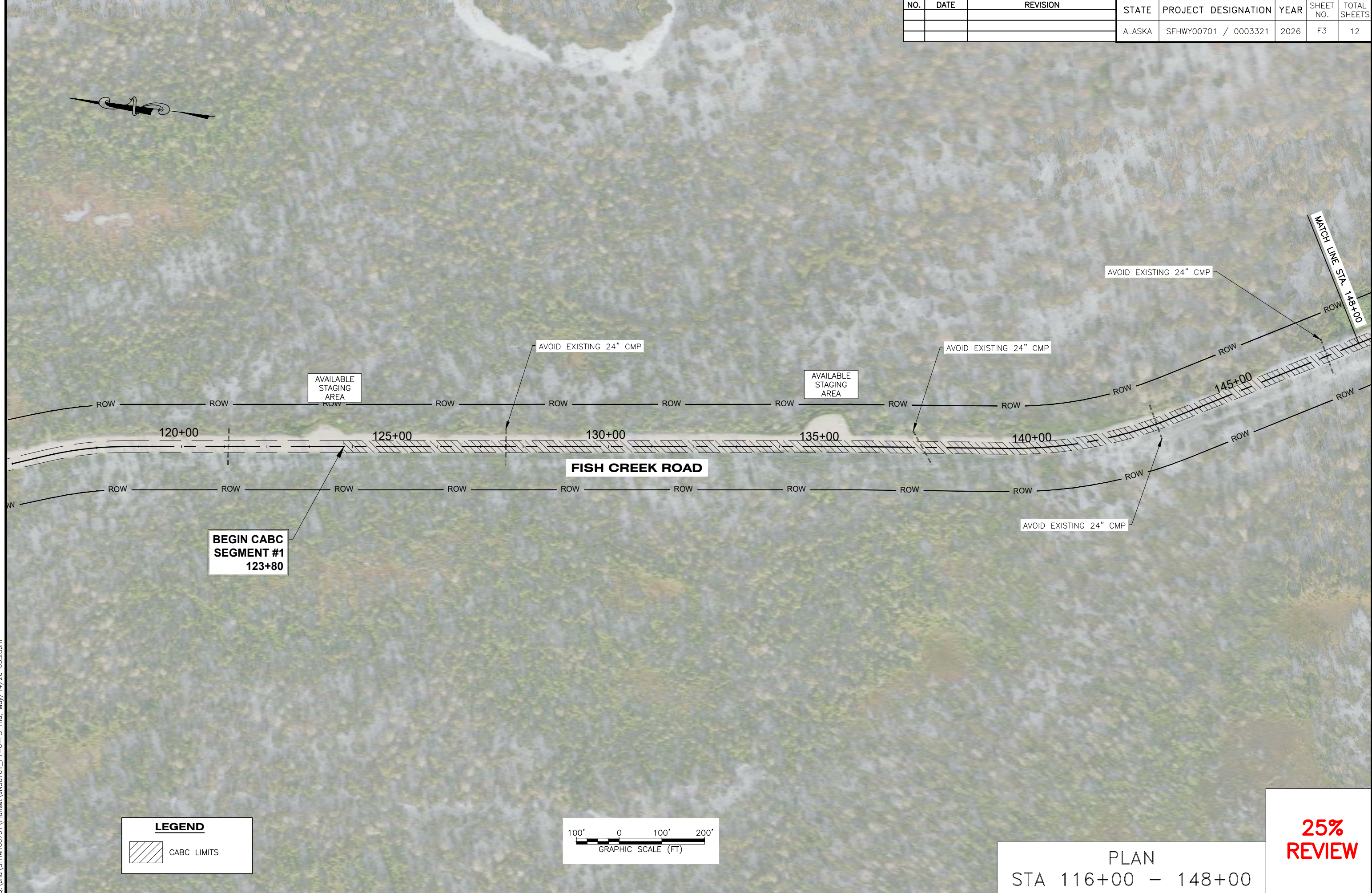
 DIGOUT LIMITS



PLAN
STA 93+00 - 100+00

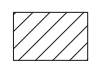
**25%
REVIEW**

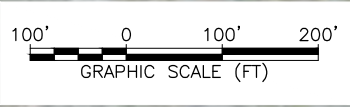
NO.	DATE	REVISION	STATE	PROJECT DESIGNATION	YEAR	SHEET NO.	TOTAL SHEETS
			ALASKA	SFHwy00701 / 0003321	2026	F3	12



PLANS DEVELOPED BY: STATE OF ALASKA DEPARTMENT OF TRANSPORTATION & PUBLIC FACILITIES, SOUTHCOAST REGION, 6860 GLACIER HWY, JUNEAU, AK 99801 (907)465-1763
 Q:\jnu\SFHwy00701\PlanSet\JNU0701_F1_6-F3_Thu_May/14/26_05:28pm

LEGEND

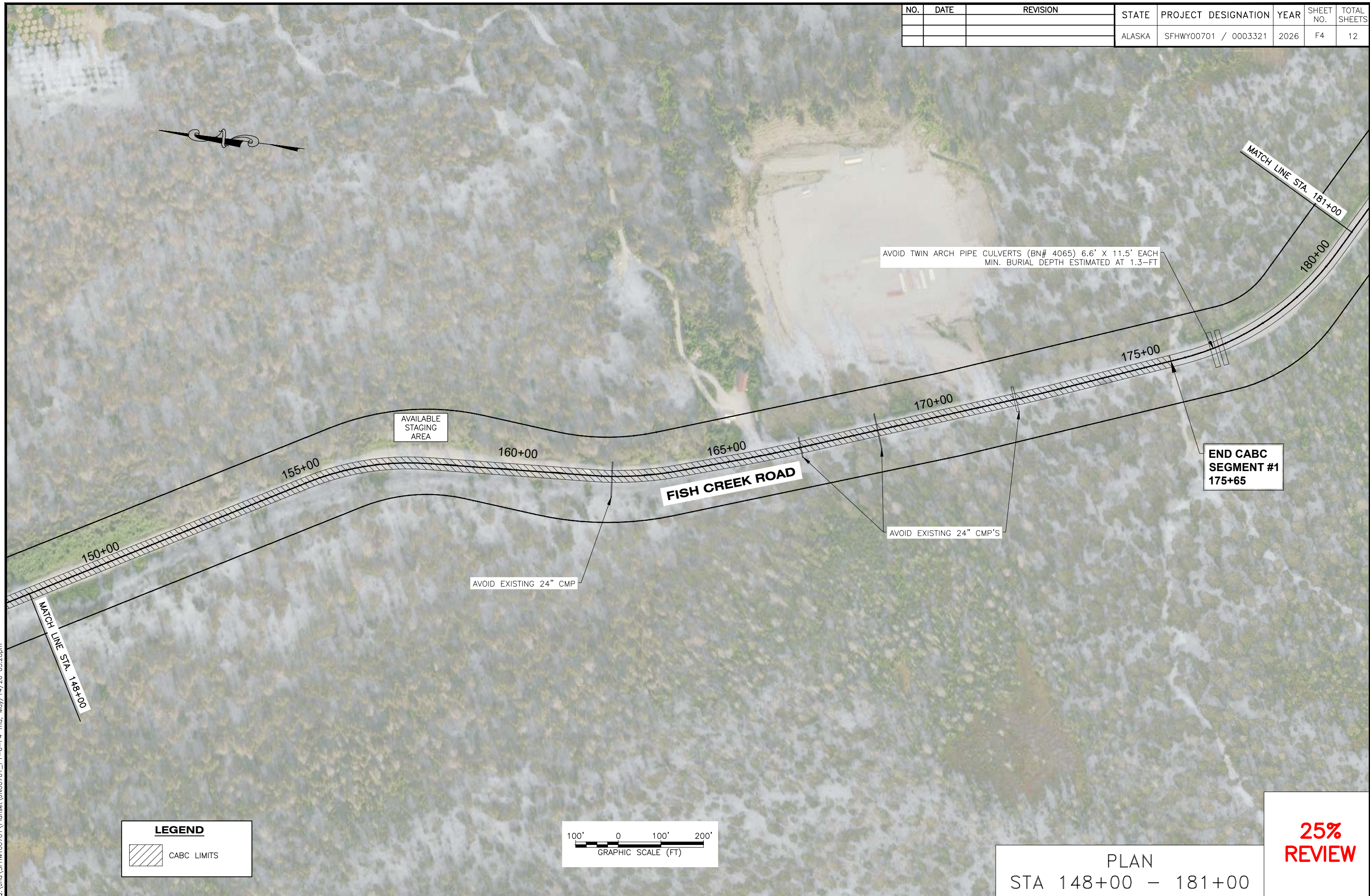
 CABC LIMITS



PLAN
STA 116+00 - 148+00

**25%
REVIEW**

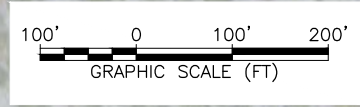
NO.	DATE	REVISION	STATE	PROJECT DESIGNATION	YEAR	SHEET NO.	TOTAL SHEETS
			ALASKA	SFHWHY00701 / 0003321	2026	F4	12



PLANS DEVELOPED BY: STATE OF ALASKA DEPARTMENT OF TRANSPORTATION & PUBLIC FACILITIES, SOUTHCOAST REGION, 6860 GLACIER HWY, JUNEAU, AK 99801 (907)465-1763
 Q:\jnu\SFHWHY00701\PlanSet\JNU0701_F1_6-F4_Thu_May/14/26_05:28pm

LEGEND

CABC LIMITS

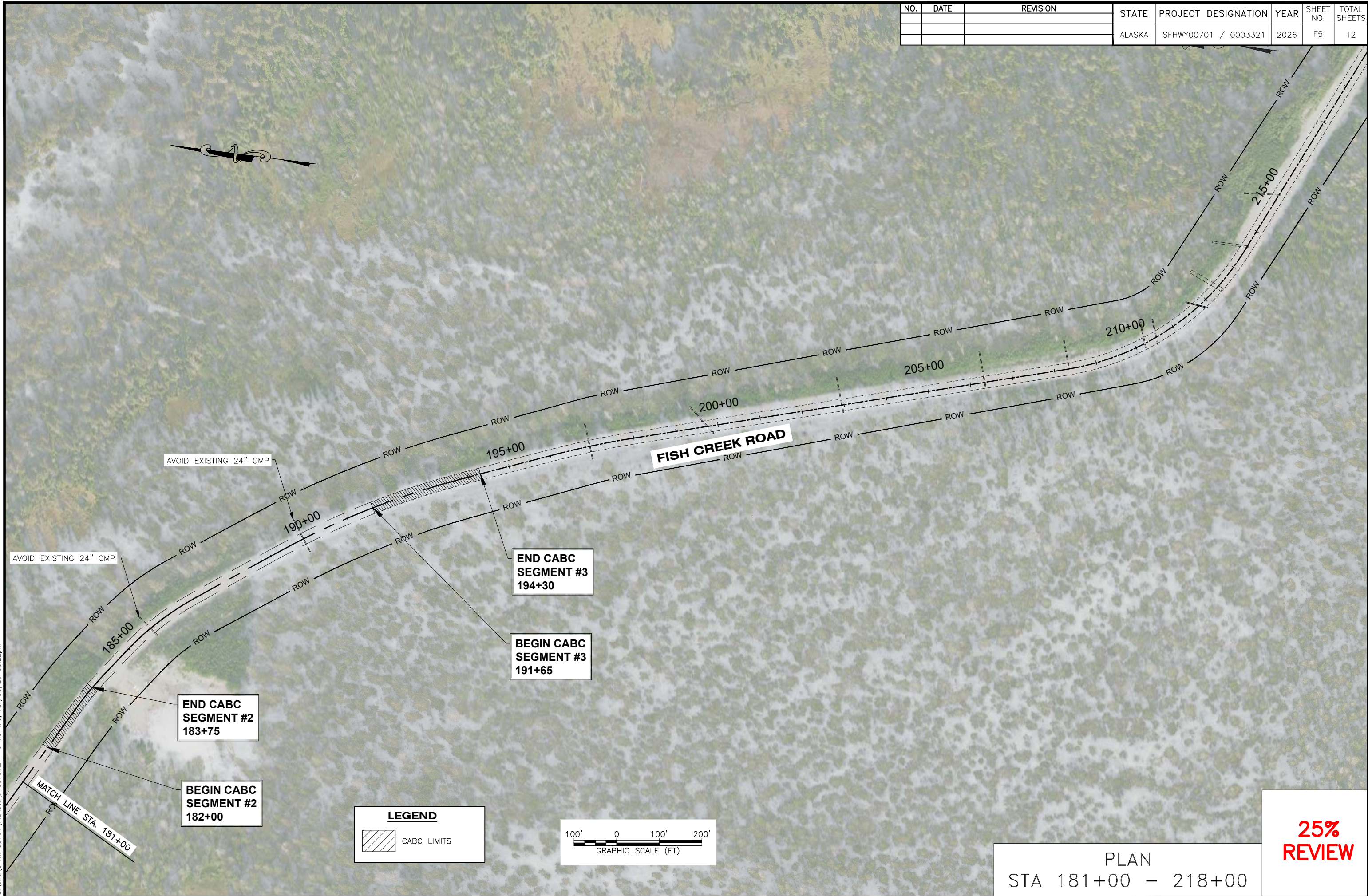


PLAN
STA 148+00 - 181+00

25%
REVIEW

NO.	DATE	REVISION	STATE	PROJECT DESIGNATION	YEAR	SHEET NO.	TOTAL SHEETS
			ALASKA	SFH00701 / 0003321	2026	F5	12

PLANS DEVELOPED BY: STATE OF ALASKA DEPARTMENT OF TRANSPORTATION & PUBLIC FACILITIES, SOUTHCOST REGION, 8860 GLACIER HWY, JUNEAU, AK 99801 (907)465-1763
 Q:\nu\SFH00701\PlanSet\JUN0701_F1-6-F5_Thu_Apr/30/26 03:22pm



AVOID EXISTING 24" CMP

AVOID EXISTING 24" CMP

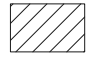
**END CABCLIMITS
SEGMENT #2
183+75**

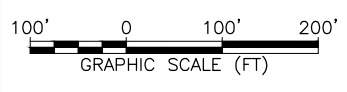
**BEGIN CABCLIMITS
SEGMENT #2
182+00**

**END CABCLIMITS
SEGMENT #3
194+30**

**BEGIN CABCLIMITS
SEGMENT #3
191+65**

LEGEND

 CABCLIMITS

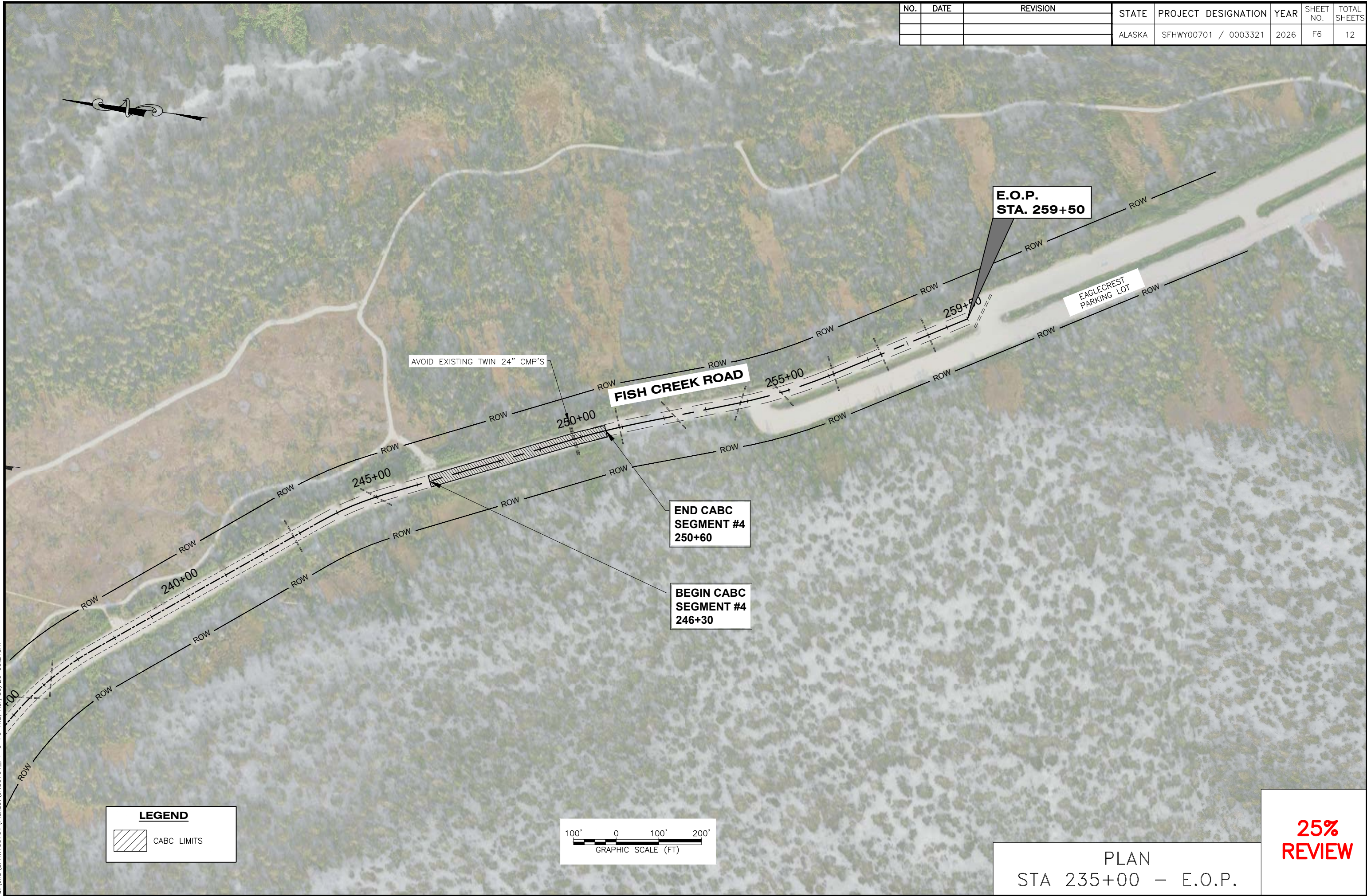


PLAN
STA 181+00 - 218+00

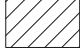
**25%
REVIEW**

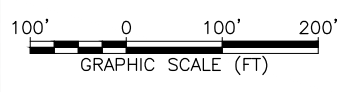
NO.	DATE	REVISION	STATE	PROJECT DESIGNATION	YEAR	SHEET NO.	TOTAL SHEETS
			ALASKA	SFHWHY00701 / 0003321	2026	F6	12

PLANS DEVELOPED BY: STATE OF ALASKA DEPARTMENT OF TRANSPORTATION & PUBLIC FACILITIES, SOUTHCOST REGION, 6860 GLACIER HWY, JUNEAU, AK 99801 (907)465-1763
 Q:\nu\SFHWHY00701\PlanSet\JUN0701_F1_6-F6_Thu, Apr/30/26 03:24pm



LEGEND

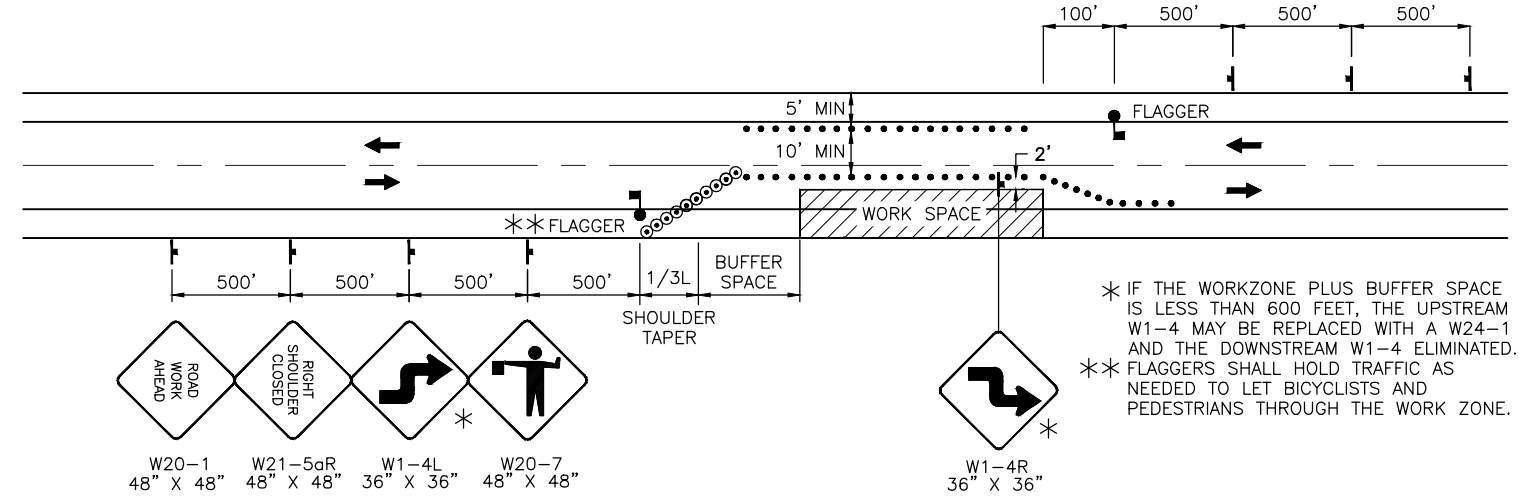
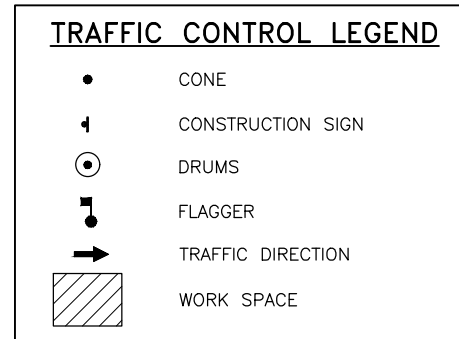
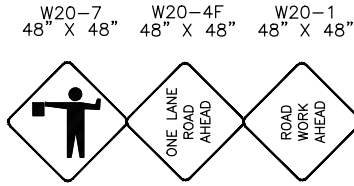
 CABC LIMITS



PLAN
STA 235+00 - E.O.P.

**25%
REVIEW**

NO.	DATE	REVISION	STATE	PROJECT DESIGNATION	YEAR	SHEET NO.	TOTAL SHEETS
			ALASKA	SFH00701 / 0003321	2026	T1	12



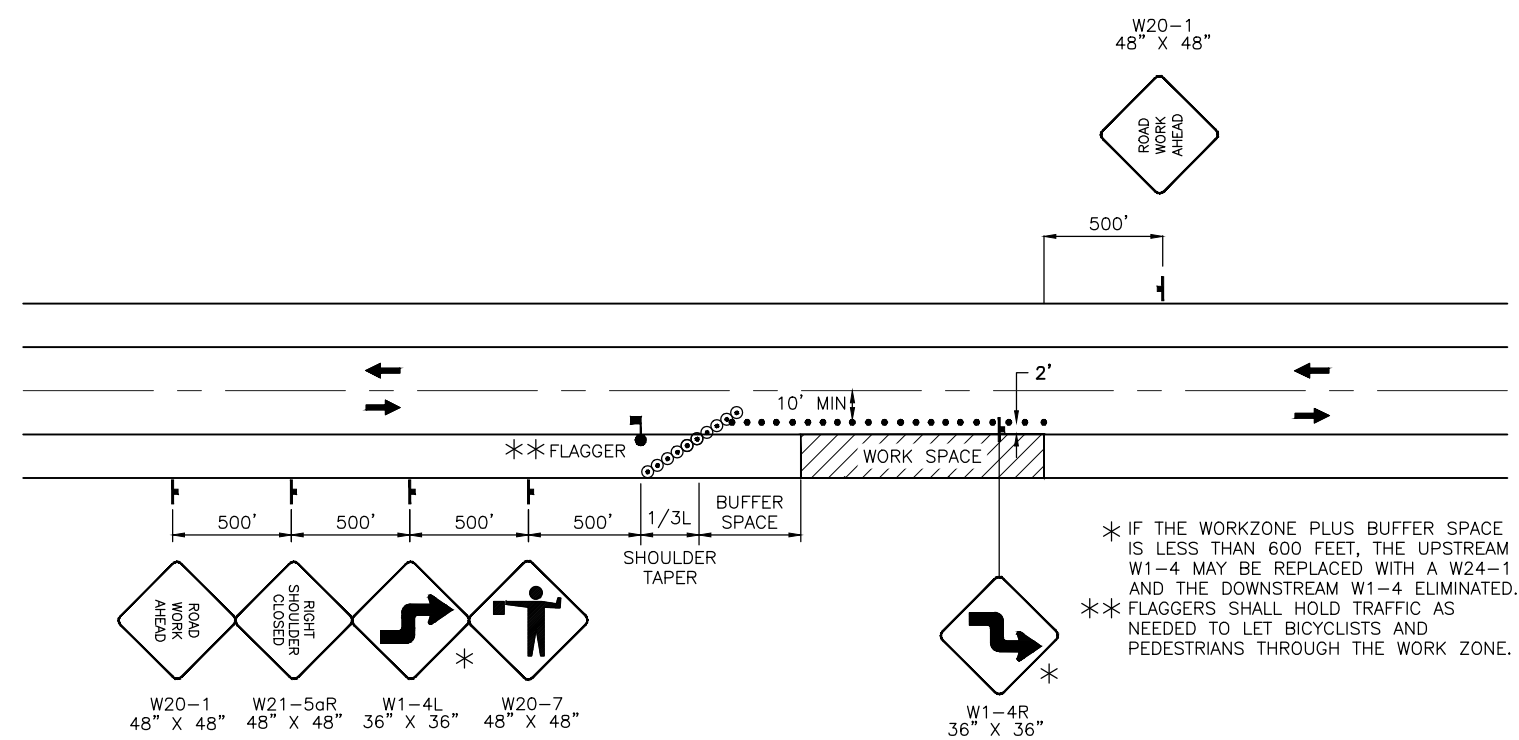
TWO LANE ROADWAY-SINGLE LANE CLOSURE

TCP SETUP TABLE

SPEED (MPH)	MIN SHOULDER TAPER LENGTH (L) IN FEET WIDTH OF OFFSET (W) IN FEET			MIN MERGING TAPER LENGTH (L) IN FEET WIDTH OF OFFSET (W) IN FEET			MIN NUMBER OF DEVICES WIDTH OF OFFSET (W) IN FEET			MAX DEVICE SPACING IN FEET		BUFFER SPACE (FT)
	4'	6'	8'	10'	11'	12'	10'	11'	12'	ALONG TAPER	ALONG TANGENT	
30	20	30	40	150	165	180	6	7	7	30	60	200
40	40	55	75	270	295	320	8	9	9	40	80	305

TRAFFIC CONTROL NOTES:

- IT IS THE INTENT OF THIS TRAFFIC CONTROL PLAN (TCP) TO ILLUSTRATE SOME, NOT ALL, OF THE TRAFFIC CONTROL SETUPS WHICH WILL BE REQUIRED ON THIS PROJECT.
- ALL TRAFFIC CONTROL PLANS SUBMITTED BY THE CONTRACTOR SHALL BE NUMBERED. ALL TRAFFIC CONTROL PLANS THAT USE A TYPICAL APPLICATION AS DESCRIBED IN THE MUTCD SHALL REFERENCE THE TYPICAL APPLICATION. EXAMPLE: TCP 3, MUTCD TA-10.
- FOR SINGLE LANE CLOSURE, CONTRACTOR SHALL MAINTAIN A TEMPORARY COMBINED PEDESTRIAN-BICYCLE PATH ON THE OPPOSITE SIDE OF THE HIGHWAY FROM THE WORK ZONE WITH A MINIMUM WIDTH OF 5'-0". CHANNELIZATION DEVICES SHALL BE USED BETWEEN THE TRAFFIC LANE AND TEMPORARY PATH.
- TEMPORARY DRIVING LANES SHALL HAVE A MINIMUM WIDTH OF 10'-0".
- MAINTAIN A MINIMUM OF ONE LANE TO BE OPEN FOR TRAFFIC AT ALL TIMES.
- CONSTRUCTION SIGNS SHALL BE PLACED SUCH THAT THEY DO NOT OBSCURE EXISTING TRAFFIC SIGNS.
- VERTICAL EDGES GREATER THAN 2" ARE NOT ALLOWED DURING NON-WORKING HOURS. LIMIT SHOULDER EXCAVATION TO AN AREA THAT CAN BE COMPLETELY BACKFILLED BY END OF WORK SHIFT.
- CONSTRUCTION SIGNING SHALL BE IN PLACE ONLY WHEN THE CONDITIONS EXIST FOR WHICH THE SIGNS ARE INTENDED.
- CONSTRUCTION CLEAR ZONE: MAINTAIN A MINIMUM WIDTH OF 2'-0" BETWEEN THE EDGE OF TRAFFIC LANE AND WORK SPACE AREA TO INSTALL CHANNELIZATION DEVICES AS DESCRIBED IN NOTE 2 OF TABLE 2 NOTES FROM ASP C-06.00.
- TRAFFIC RESTRICTIONS SHALL ONLY OCCUR DURING DAYTIME HOURS.
- FLAGGER(S) SHALL BE PRESENT AT ALL TIMES WHEN CHANNELIZATION DEVICES ARE IN PLACE.



SHOULDER CLOSURE

TRAFFIC CONTROL PLAN

**25%
REVIEW**