

# EGAN / YANDUKIN



## Intersection Improvements

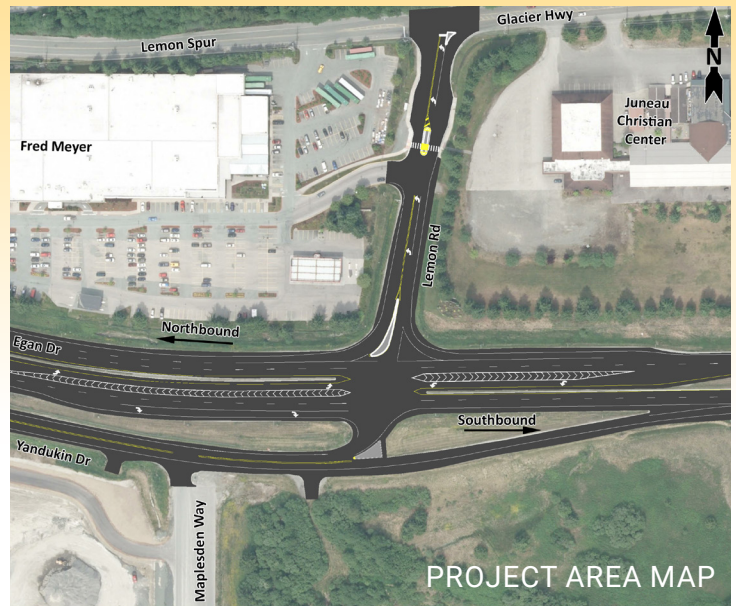
# Egan / Yandukin Intersection Improvements Project

## PROJECT FACT SHEET

### PROJECT OVERVIEW

In response to public safety and connectivity concerns at the intersection of Egan and Yandukin Drives in Juneau, Alaska, the Alaska Department of Transportation & Public Facilities (DOT&PF) is working on ways to make improvements for transportation users.

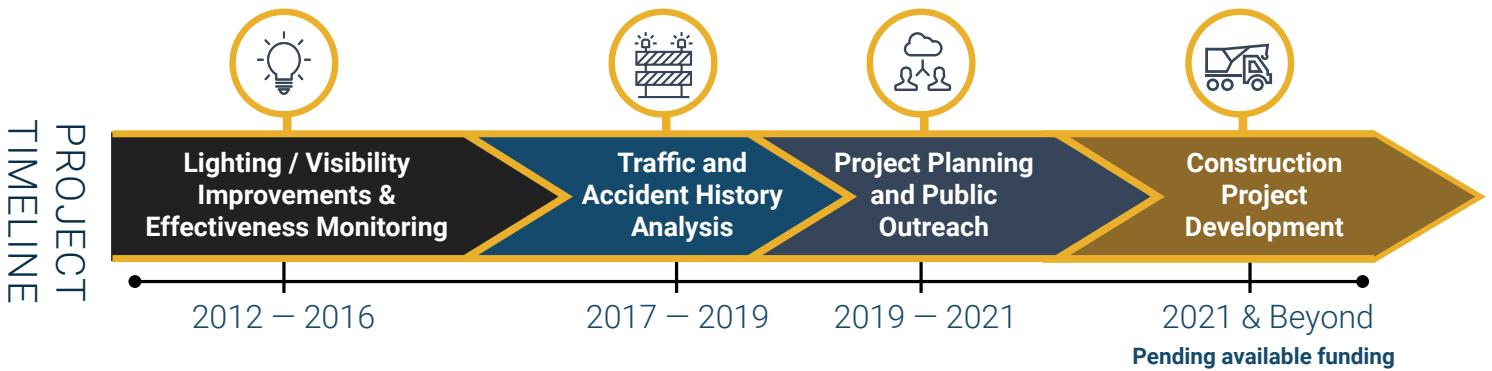
DOT&PF has determined that the traffic dynamics along the corridor are complex. For example, apparent factors in left-hand-turn crashes include driver difficulty in judging gaps in traffic. Insufficient traffic gaps and environmental conditions like darkness and wet or icy roads are contributing to crash severity and frequency. Previously identified potential improvement options create tradeoffs.



PROJECT AREA MAP

### IMPROVEMENT EFFORTS

DOT&PF is engaging the community of Juneau, and analyzing crash history and improvement options to figure out “right-sized” improvements for the Egan / Yandukin intersection. The Department has applied for funding for safety enhancements that can be implemented relatively quickly, and continues to develop other solutions to improve safety and connectivity in the area.



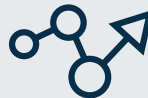
### PROJECT BENEFITS

1



Safety enhancements for motorists, pedestrians, and bicyclists

2



System connectivity and acceptable traffic flow

3



Improved pedestrian/bicycle access across the intersection

Questions? **James Brown, DOT&PF** | (907) 465-1796 [eganyandukin@alaska.gov](mailto:eganyandukin@alaska.gov)