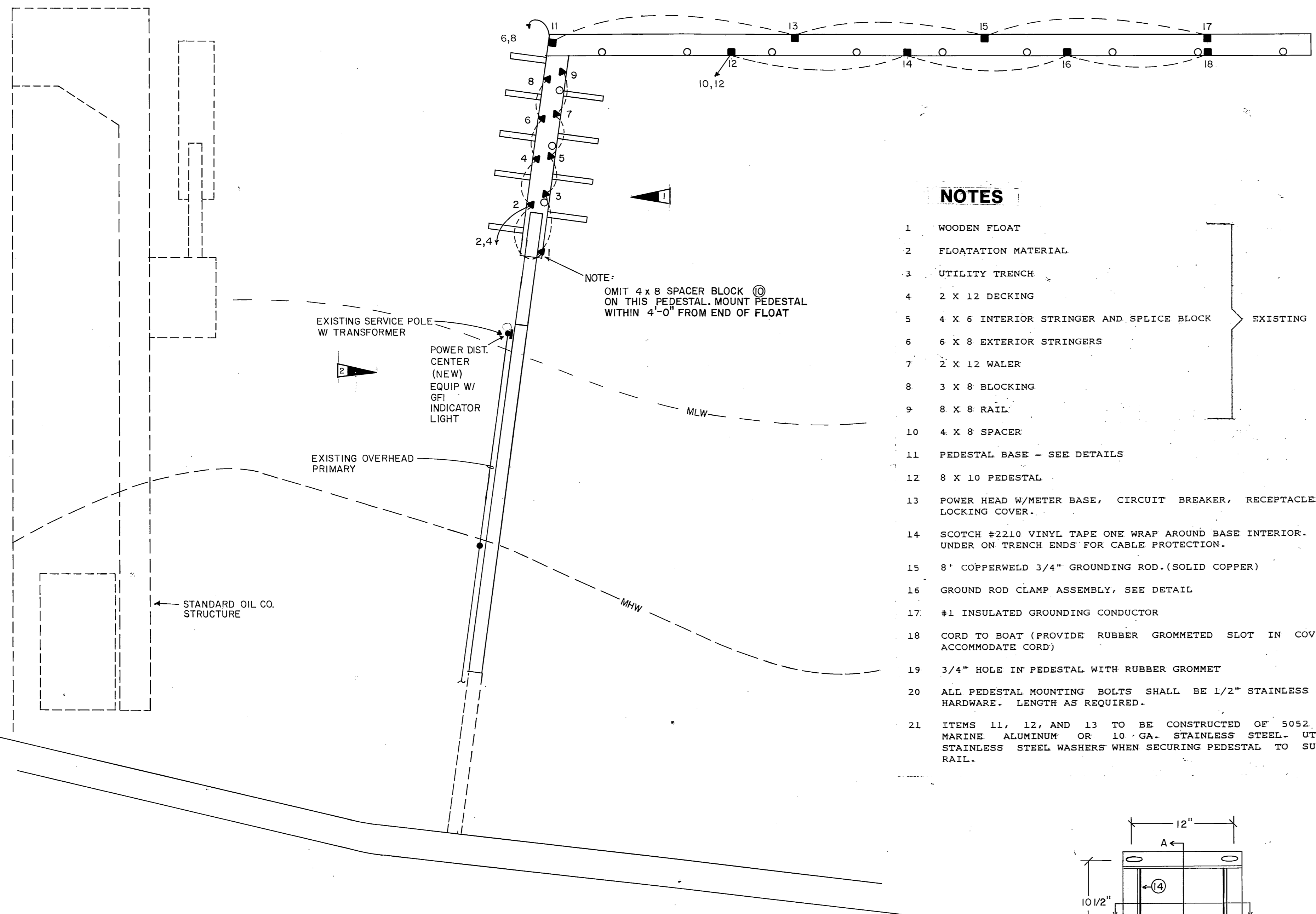
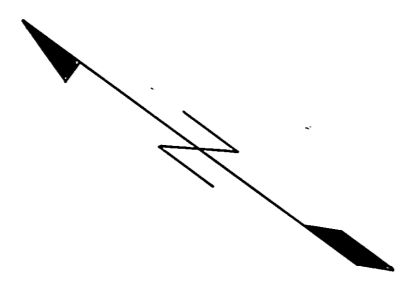


LEGEND

- CABLE WITHIN A FLOAT
- 120/240 V DOUBLE PEDESTAL
- ▼ 120 V DOUBLE PEDESTAL
- ≡ GROUND ELECTRODE
- PANEL
- ☼ WEATHERHEAD
- ▽ EQUIPMENT GROUND CONNECTION
- PILING

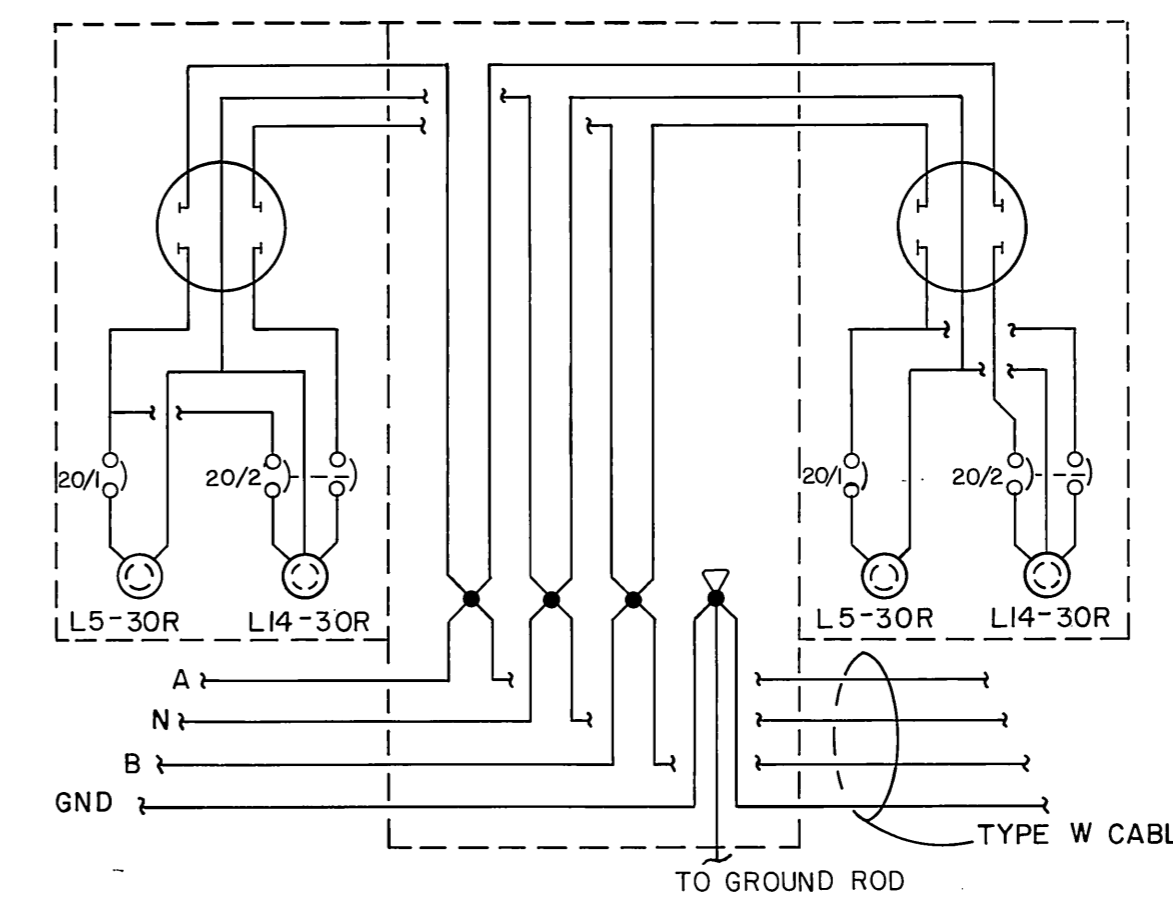


ELECTRICAL SITE PLAN
SCALE: 1"=30'

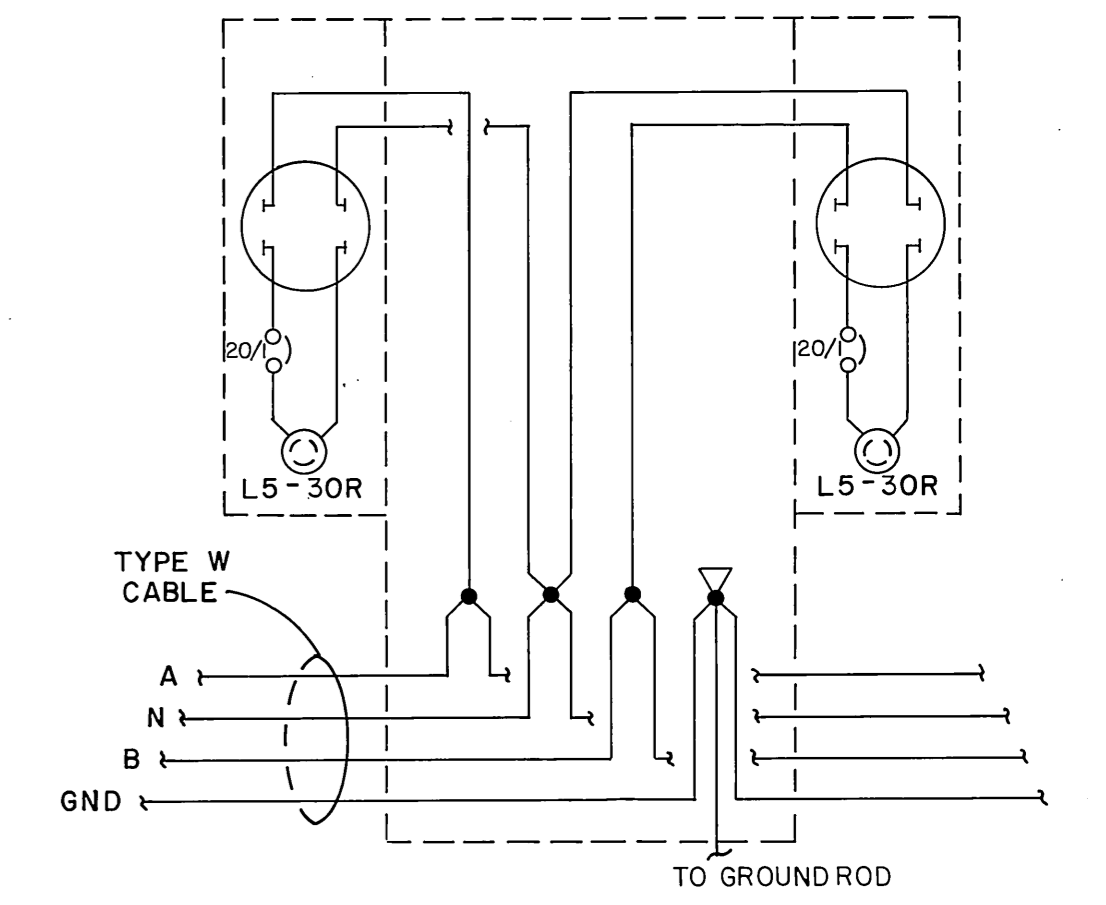
NOTES

- 1 WOODEN FLOAT
- 2 FLOATATION MATERIAL
- 3 UTILITY TRENCH
- 4 2 X 12 DECKING
- 5 4 X 6 INTERIOR STRINGER AND SPLICE BLOCK
- 6 6 X 8 EXTERIOR STRINGERS
- 7 2 X 12 WALKER
- 8 3 X 8 BLOCKING
- 9 8 X 8 RAIL
- 10 4 X 8 SPACER
- 11 PEDESTAL BASE - SEE DETAILS
- 12 8 X 10 PEDESTAL
- 13 POWER HEAD W/METER BASE, CIRCUIT BREAKER, RECEPTACLE AND LOCKING COVER.
- 14 SCOTCH #2210 VINYL TAPE ONE WRAP AROUND BASE INTERIOR. FOLD UNDER ON TRENCH ENDS FOR CABLE PROTECTION.
- 15 8' COPPERWELD 3/4" GROUNDING ROD. (SOLID COPPER)
- 16 GROUND ROD CLAMP ASSEMBLY, SEE DETAIL
- 17 #1 INSULATED GROUNDING CONDUCTOR
- 18 CORD TO BOAT (PROVIDE RUBBER GROMMETED SLOT IN COVER TO ACCOMMODATE CORD)
- 19 3/4" HOLE IN PEDESTAL WITH RUBBER GROMMET
- 20 ALL PEDESTAL MOUNTING BOLTS SHALL BE 1/2" STAINLESS STEEL HARDWARE. LENGTH AS REQUIRED.
- 21 ITEMS 11, 12, AND 13 TO BE CONSTRUCTED OF 5052 -H32 MARINE ALUMINUM OR 10 GA. STAINLESS STEEL. UTILIZE STAINLESS STEEL WASHERS WHEN SECURING PEDESTAL TO SUPPORT RAIL.

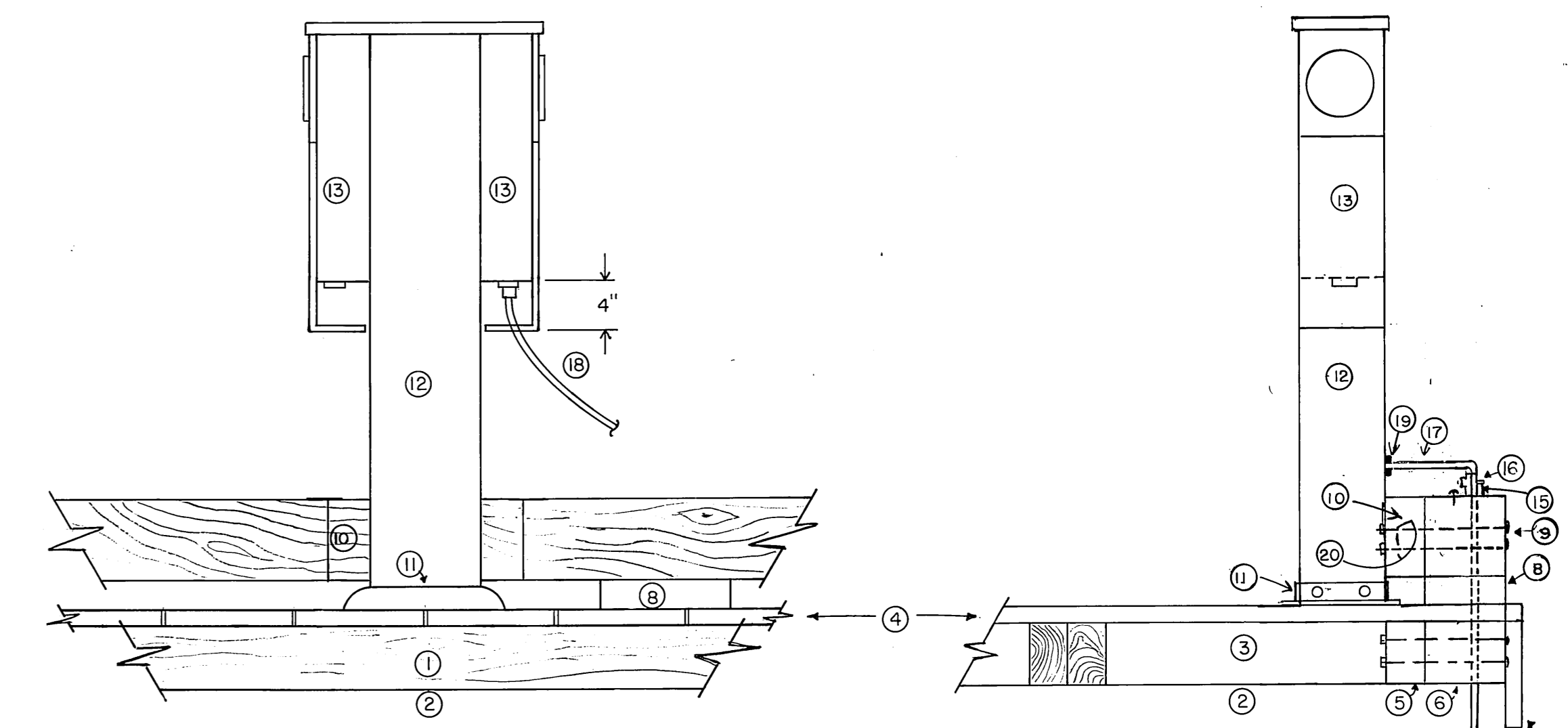
NOTE:
OMIT 4 X 8 SPACER BLOCK (10) ON THIS PEDESTAL. MOUNT PEDESTAL WITHIN 4'-0" FROM END OF FLOAT



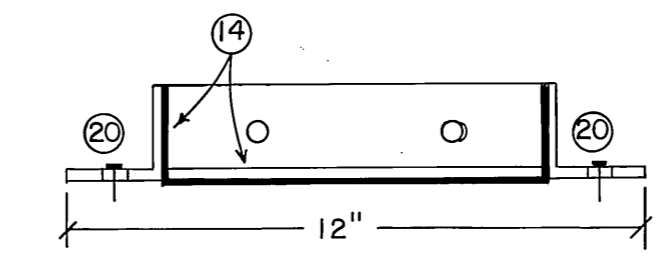
120/240 VOLT PEDESTAL RISER
NO SCALE



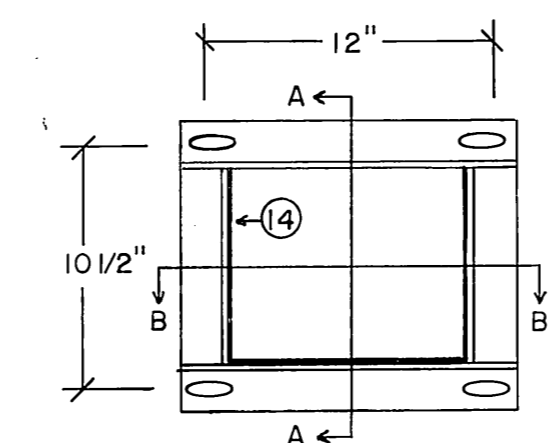
120 VOLT PEDESTAL RISER
NO SCALE



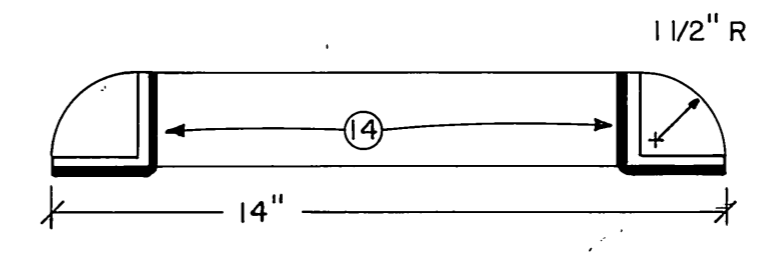
PEDESTAL
SCALE: 1"=1'-0"



SECTION A-A
SCALE: 3"=1'-0"

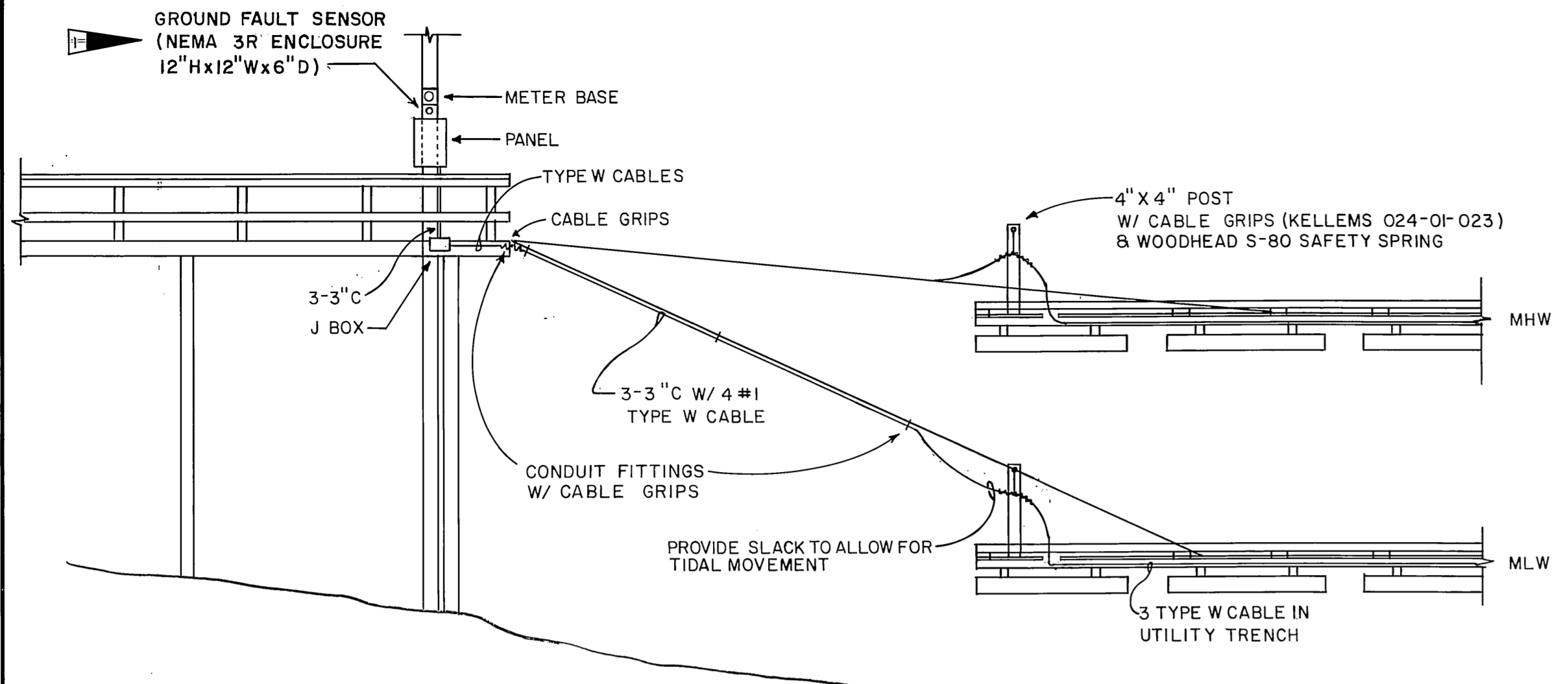


PEDESTAL BASE
SCALE: 1 1/2"=1'-0"

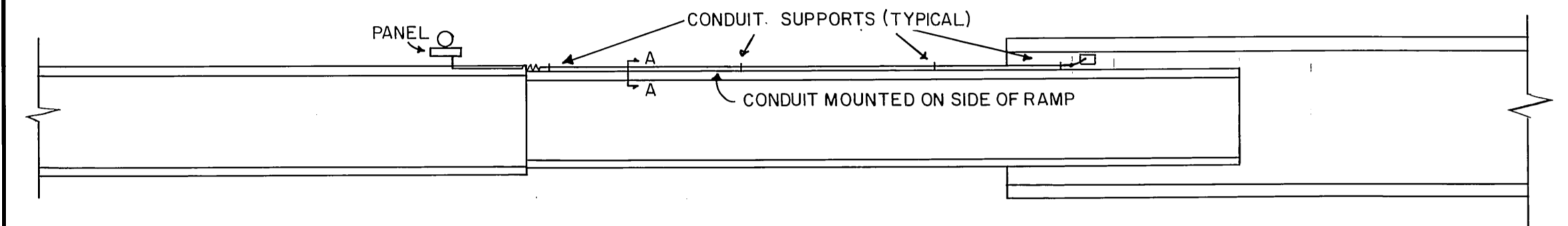


SECTION B-B
SCALE: 3"=1'-0"

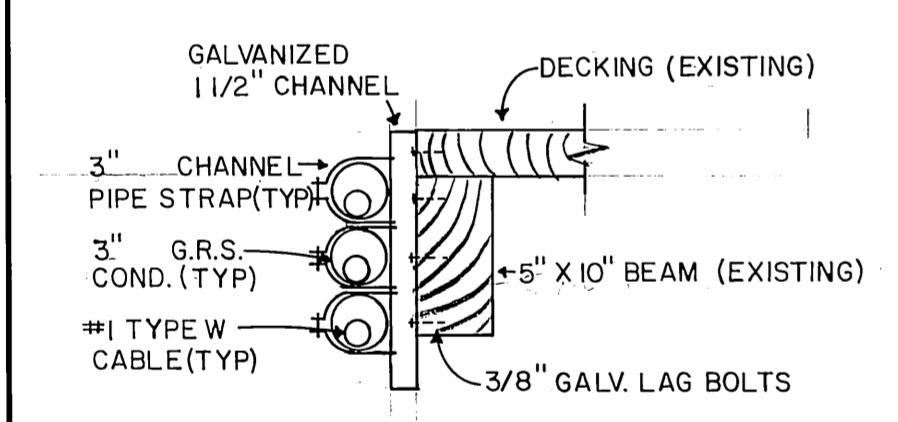
REVISION	DATE	DO NOT SCALE THIS DRAWING - USE DIMENSIONS						BY	
2	12/85	ADDITION OF GROUND FAULT INDICATOR LAMP						ISM	
1	12/85	OMISSION OF SPACER BLOCK, CHNG. TO NO. & TYPE OF PEDESTAL						ISM	
STAMP		STATE OF ALASKA DEPARTMENT OF TRANSPORTATION AND PUBLIC FACILITIES HARBOR DESIGN AND CONSTRUCTION							
		WRANGELL, STANDARD OIL FLOAT						ALASKA	
		ELECTRICAL MODIFICATIONS							
		SITE PLAN & DETAILS							
SCALE NOTED	SURVEYED	APPROVED							
DESIGNED_WBF	DRAWN_KK								
CHECKED_BCH	DATE_4/85								
PROJECT NUMBER X30018								SHEET E1 OF 2	



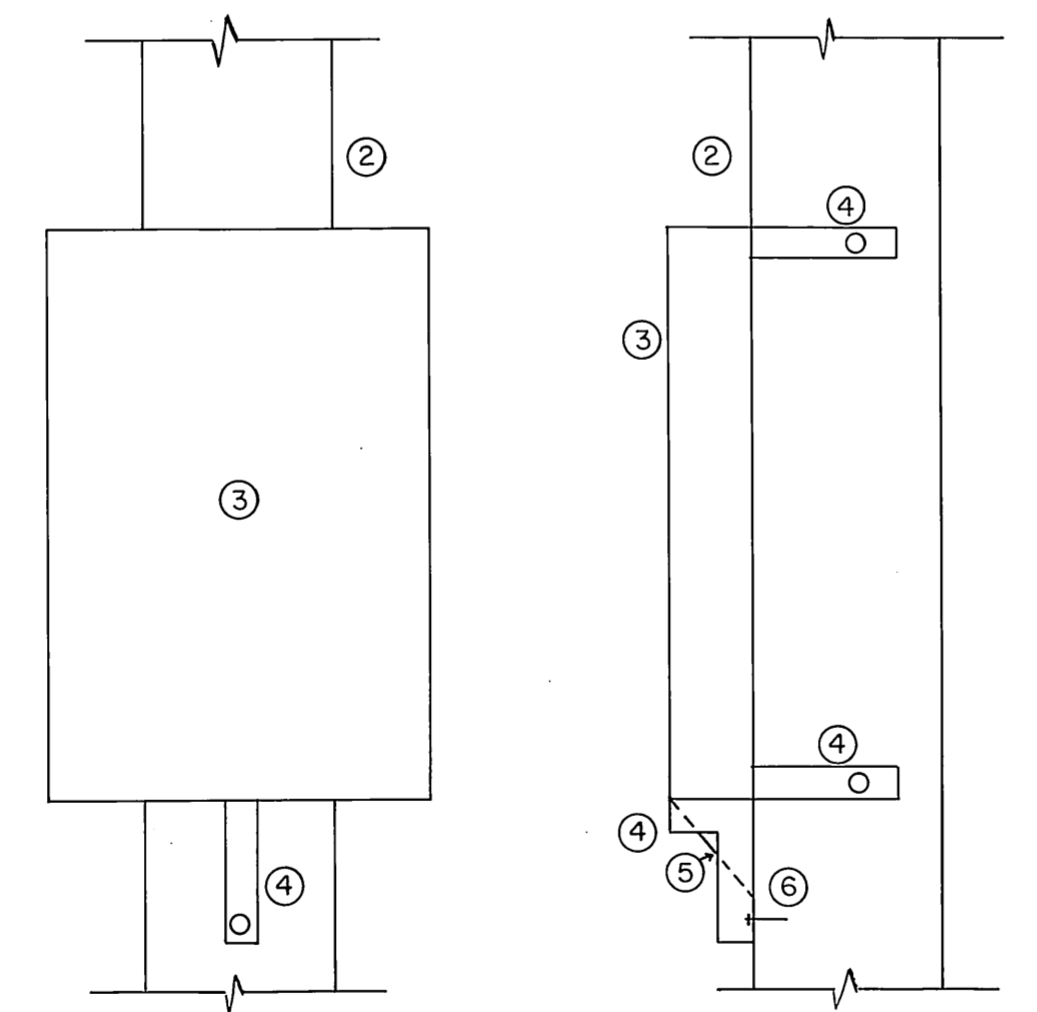
RAMP ELEVATION
SCALE: 1/8" = 1'-0"



RAMP PLAN
SCALE: 1/8" = 1'-0"

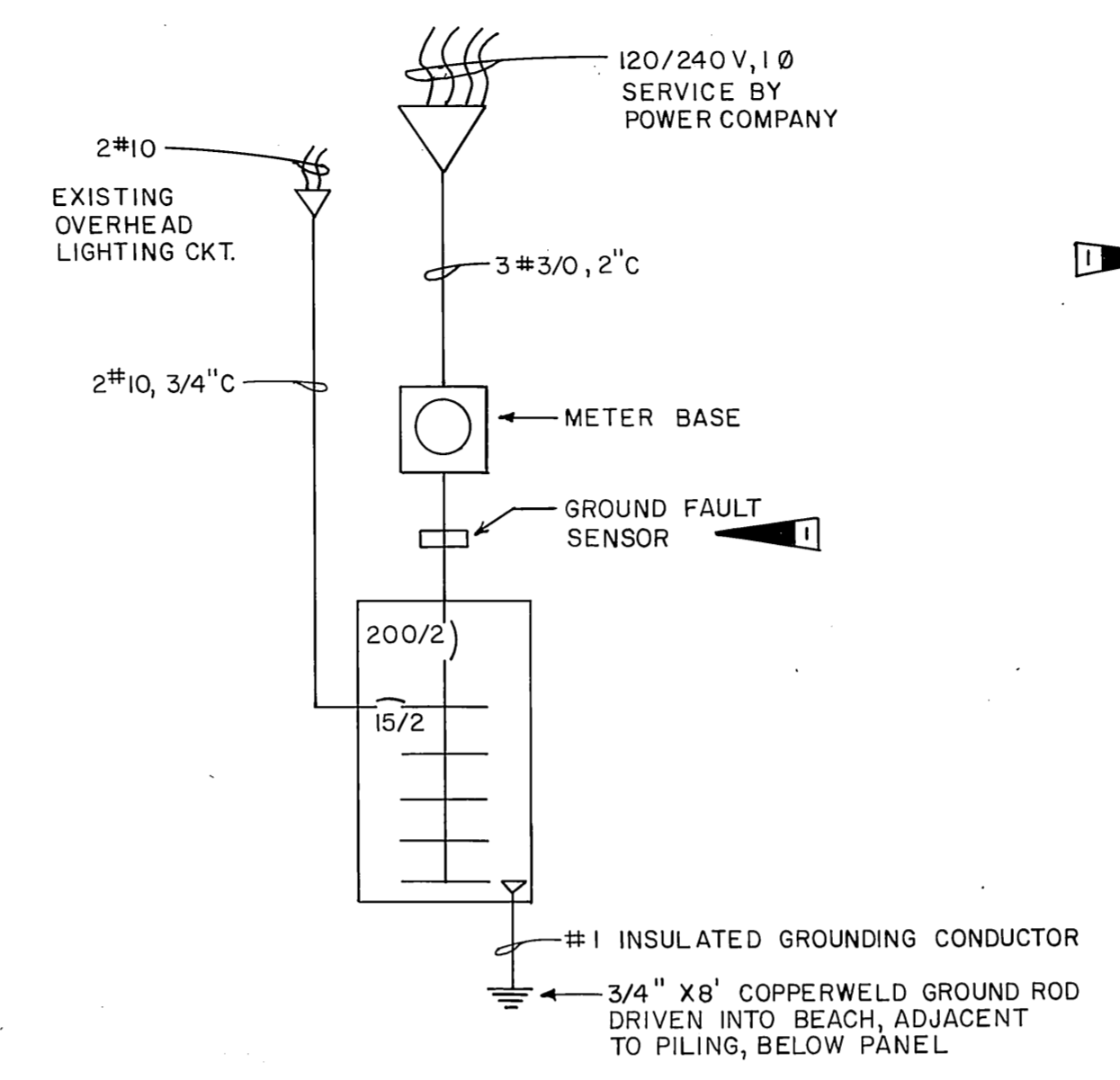


SECTION A-A
SCALE: 1" = 1'-0"



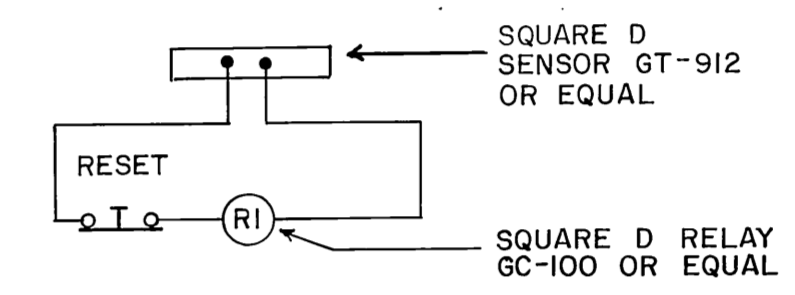
PANEL MOUNTING DETAIL
SCALE: 1" = 1'-0"

- NOTES:**
1. ALL MATERIAL SHALL BE STAINLESS STEEL OR 5052-H32 MARINE GRADE ALUMINUM
 2. SERVICE POLE (EXISTING)
 3. NEMA 3R ENCLOSURE
 4. 2" X 2" X 3/16" ANGLE BRACE
 5. 6" X 6" X 9" 3/16" PLATE WELDED TO BRACE
 6. 1/2" LAG BOLT
 7. PANELBOARD SHALL BE STAINLESS STEEL OR FIBERGLASS.



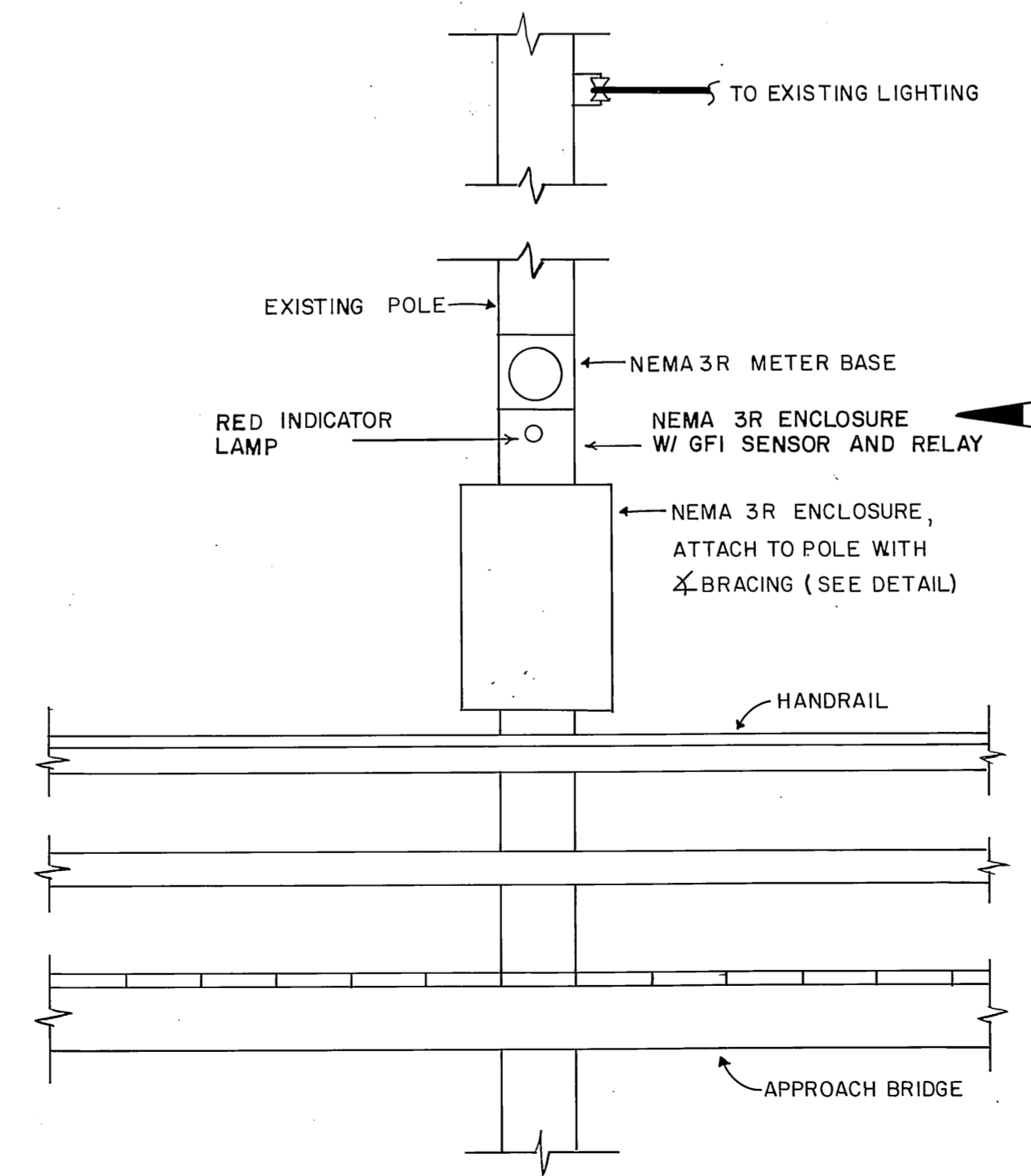
SINGLE LINE DIAGRAM
NO SCALE

WIRE		SIZE	VOLTS/PHASE		MAIN		LOCATION		MOUNT SURFACE	
NO.	SIZE	AMP/POLE	CT.	AØ	BØ	CT.	POLE	DESCRIPTION	NO.	SIZE
1	2/10	15/2	0.5	5.9	5.4	60/2	PEDESTALS #1 - 9	4/1	2	
3					5.9	5.4				4
5	2/12	20/1	0.1	4.8	4.7	60/2	PEDESTALS #11,13,15,17	4/1	8	
7					4.7	4.7				8
9					4.0	4.0	50/2	PEDESTALS #12,14,16,18	4/1	10
11					4.0	4.0				12
13								SPACE		16
15										18
17										18
19										20
TOTAL CONNECTED LOAD =		29 KVA/122 AMPS	14.7	14.6						



NOTE:
GROUND FAULT SENSOR IS FOR INDICATION OF FAULT ONLY. NO ELECTRICAL DISCONNECT IS DESIRED. LABEL INDICATOR LAMP "ON" FOR GROUND FAULT.

SCHEMATIC DIAGRAM - GROUND FAULT SENSOR
NO SCALE



POWER DISTRIBUTION POLE ELEVATION
SCALE: 1/2" = 1'-0"

12/85	ADDITION OF GROUND FAULT SENSOR	CSM
REVISION	DATE	BY
STAMP		DO NOT SCALE THIS DRAWING - USE DIMENSIONS
STATE OF ALASKA DEPARTMENT OF TRANSPORTATION AND PUBLIC FACILITIES HARBOR DESIGN AND CONSTRUCTION		
WRANGELL, STANDARD OIL FLOAT		ALASKA
ELECTRICAL MODIFICATIONS		
DETAILS		
SCALE NOTED	SURVEYED	APPROVED
DESIGNED_WRF	DRAWN_MM	
CHECKED_BCH	DATE_1/85	
PROJECT NUMBER	X30018	SHEET E2 OF 2