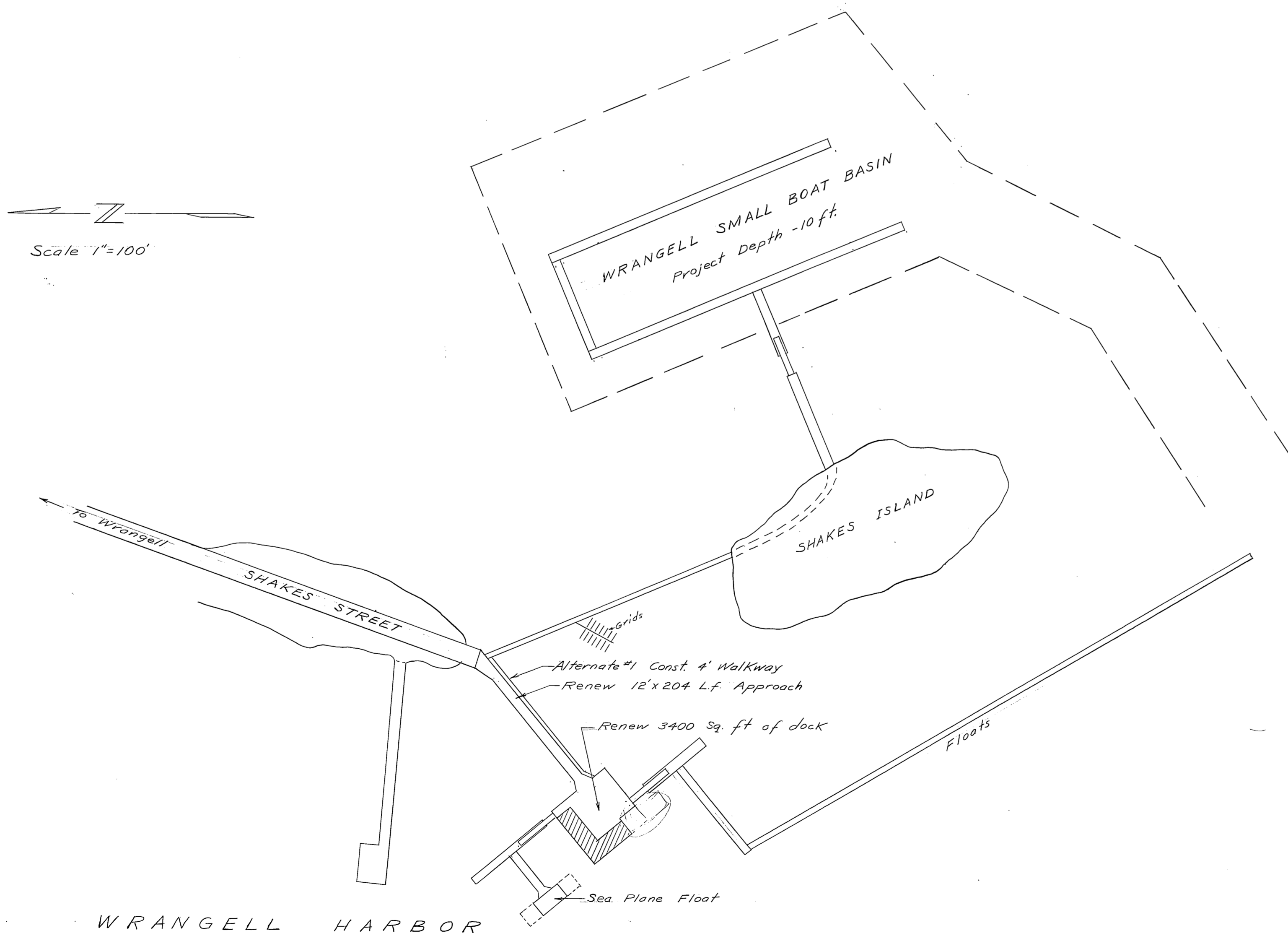
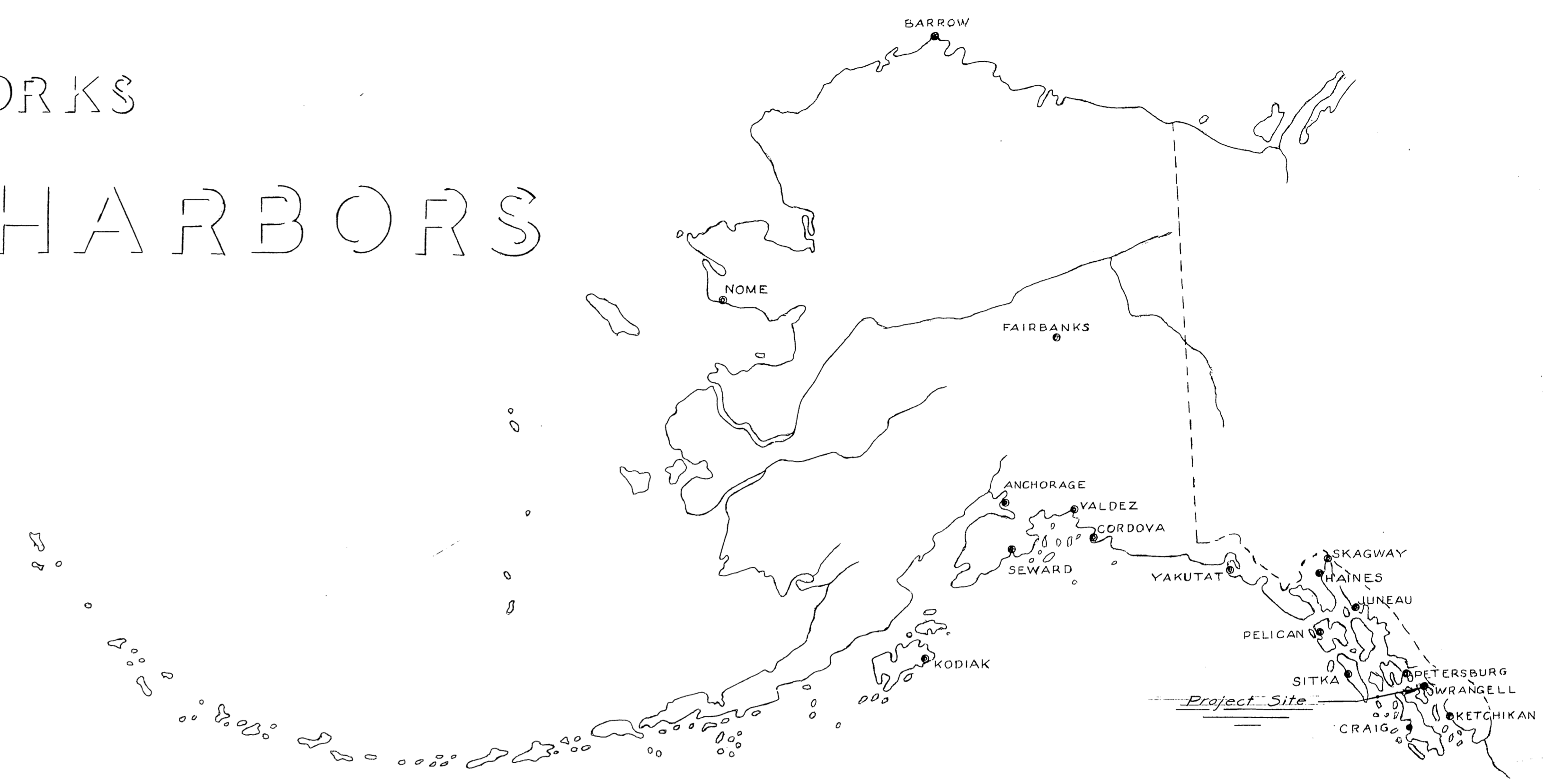


STATE OF ALASKA
 DEPARTMENT OF PUBLIC WORKS
 DIVISION OF WATER & HARBORS
WRANGELL DOCK & APPROACH
PROJECT NO. WA6118



Scale 1"=100'

WORK SUMMARY

Major units of this project include the dismantling of the existing Shakes St. approach trestle & dock & replacement of a new 12'x204' approach & 3400 sq. ft. of dock and the construction of a 4'x204' walkway.

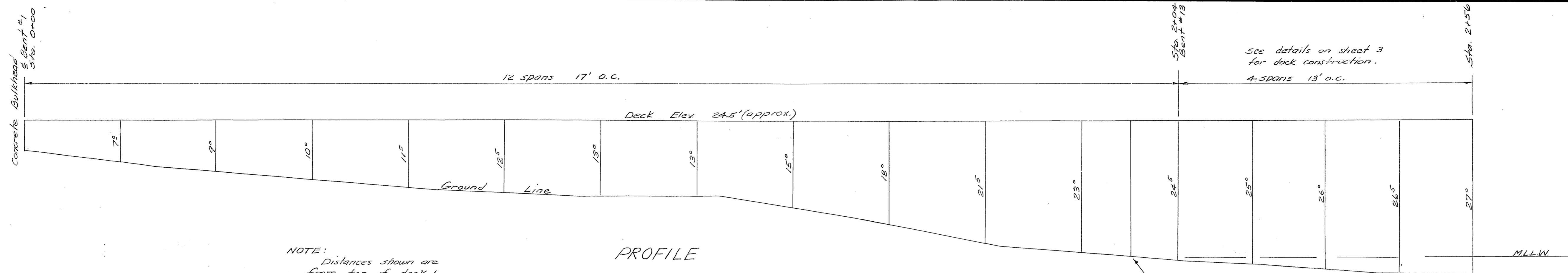
INDEX TO SHEETS

- TITLE & LOCATION SHEET..... SHEET 1
- PROFILE & TYPICAL SECTION..... SHEET 2
- DOCK CONSTRUCTION DETAILS... SHEET 3



AS BUILT

DATE 4/21/61 APPROVED *Cort B. Howard* COMMISSIONER



NOTE: Distances shown are from top of deck to ground line in feet.

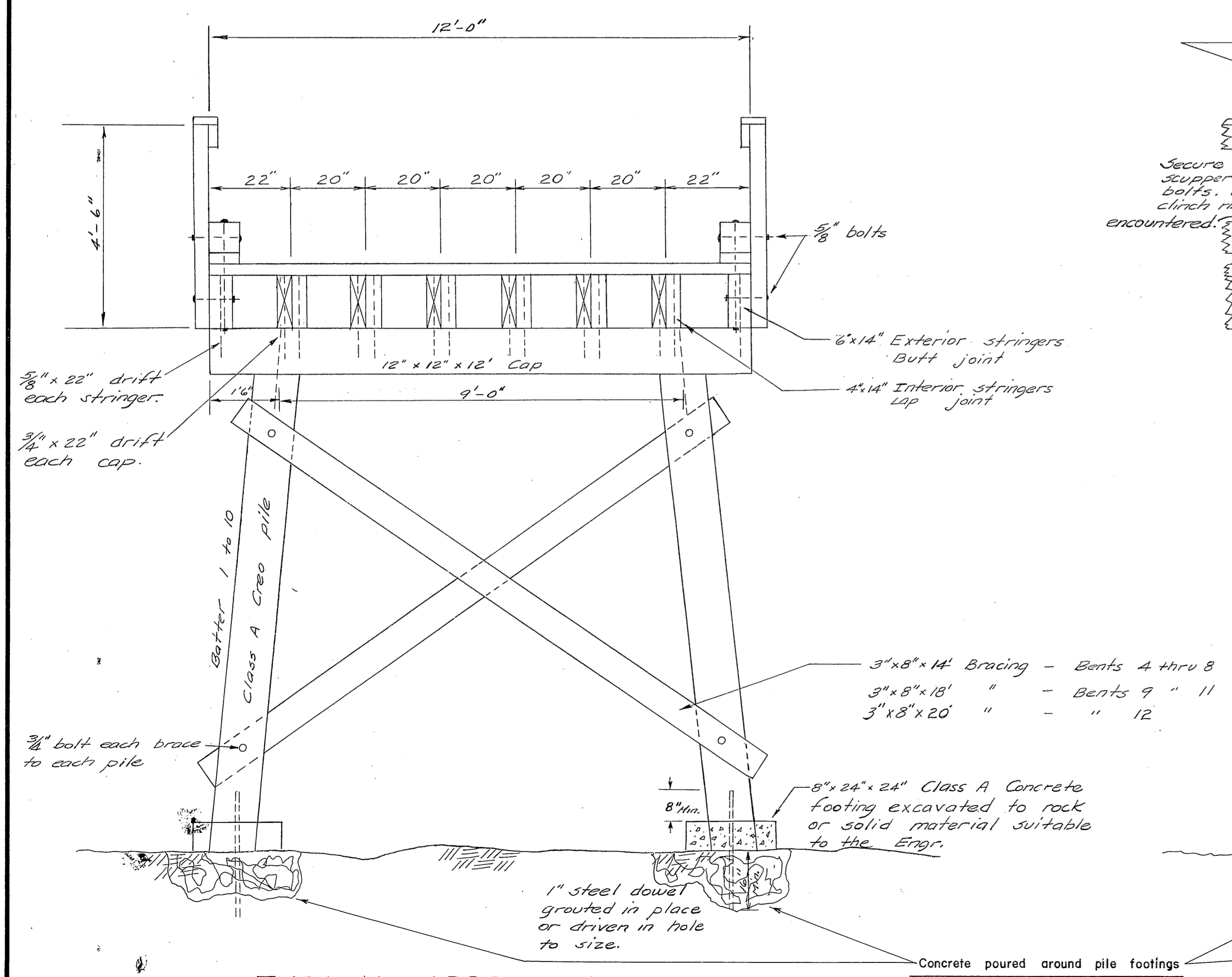
PROFILE
scale 1"=10'

Approach piling to be set on concrete footings. Piling may be driven where overburden is in excess of 3 ft.

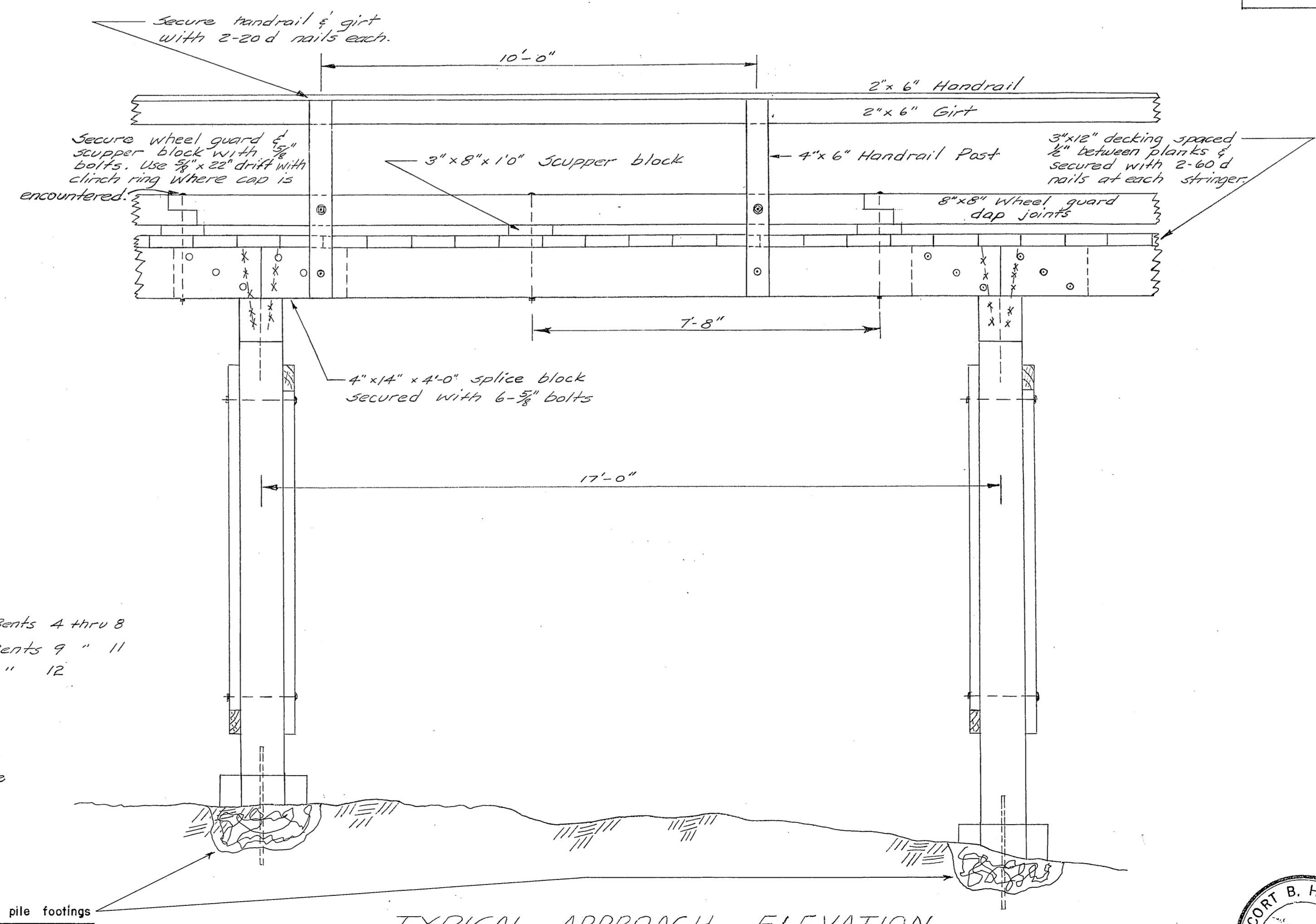
see details on sheet 3 for dock construction.

		MATERIALS			
	ITEM	GRADE	DRESSING	CREO. TREAT.	
DOUGLAS FIR	Piling	Class A		12" Ret.	
	Bracing	Construction	Rough	12" "	
	Caps	"	S 2 E	10" "	
	4x4 Stringers	"	"	" "	
	Splice Bl.	"	"	" "	
SITKA SPRUCE	6x4 Stringers	"	S 4 S	" "	
	Decking	"	S 1 S	None	
	Scupper Bl.	"	S 4 S	"	
	Wheel Gd.	"	"	"	
	Handrail Post	"	"	"	
	Girt	"	"	"	
	Handrail	"	"	"	

Extra bent in dock flare



TYPICAL APPROACH SECTION
scale 1/2"=1'-0"



TYPICAL APPROACH ELEVATION
scale 1/2"=1'-0"

Notes
All hardware to be galvanized with malleable iron washers between nut and wood surfaces. All bolts to be economy head type. Bolt holes to be drilled true size. Drift holes to be drilled 1/8" undersize. Drill holes to be treated with hot creo oil. All native wood bearing surfaces & joints to be treated with asphaltic roofing compound as described in the specifications.



NO.	DATE	REVISION	BY

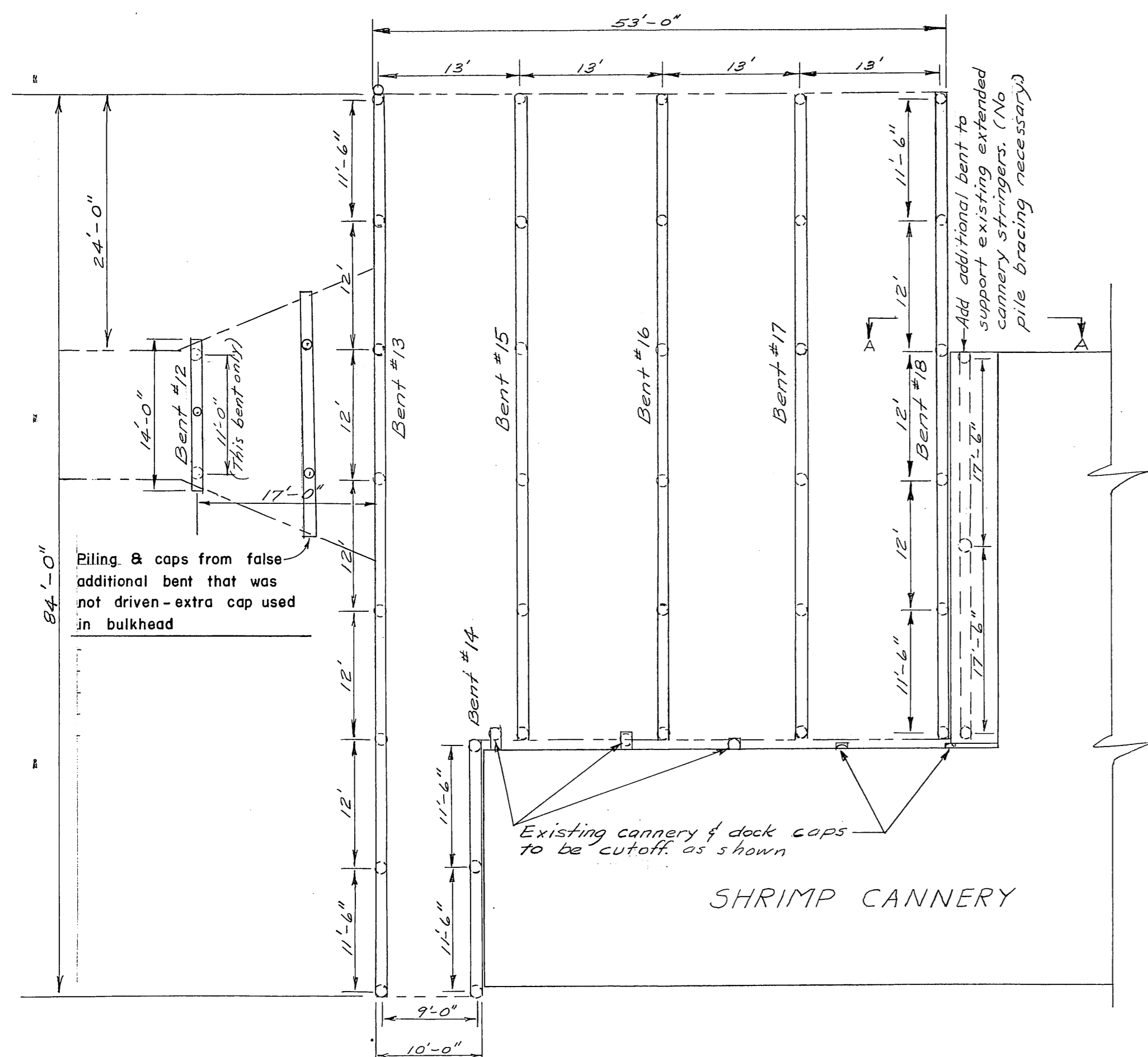
STATE OF ALASKA
DEPARTMENT OF PUBLIC WORKS
DIVISION OF WATER AND HARBORS

WRANGELL DOCK & APPROACH
Profile & Typical Section

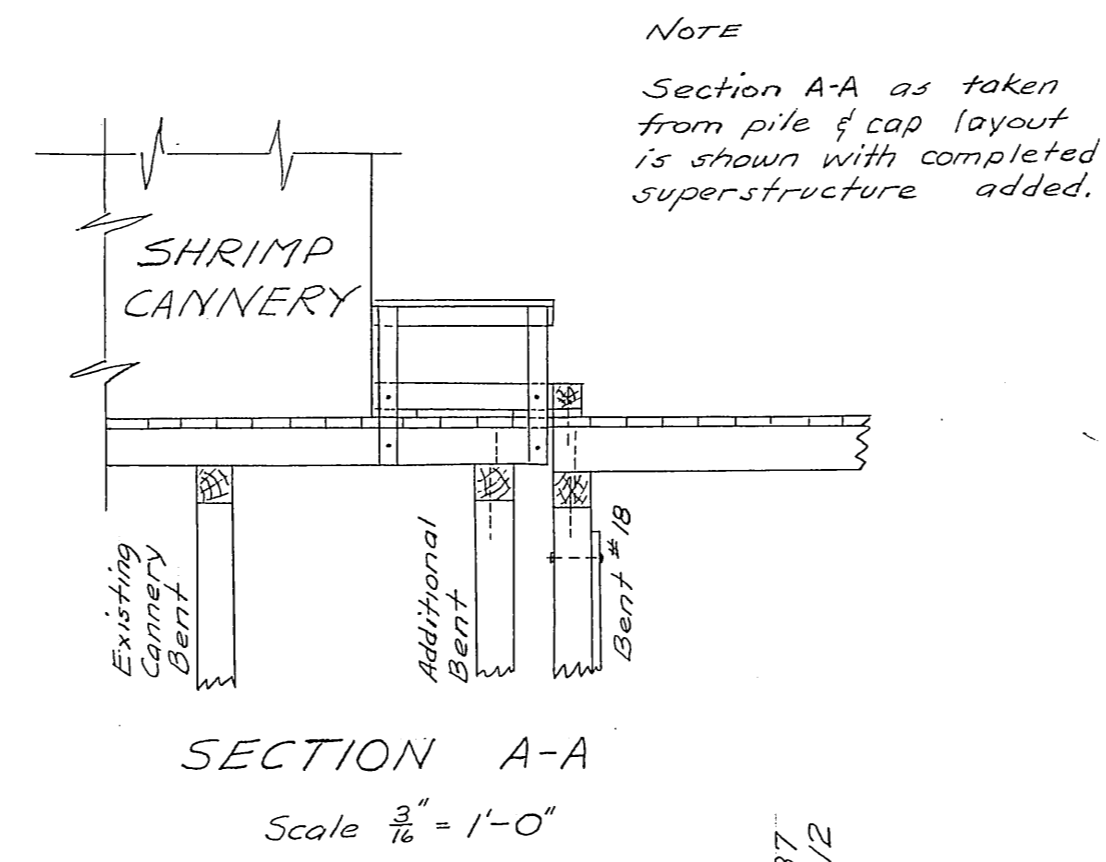
SCALE As shown
DATE April 25, 1961
PROJ. NO. WAB 6113

APPROVED *L.A. Deming*
COMMISSIONER

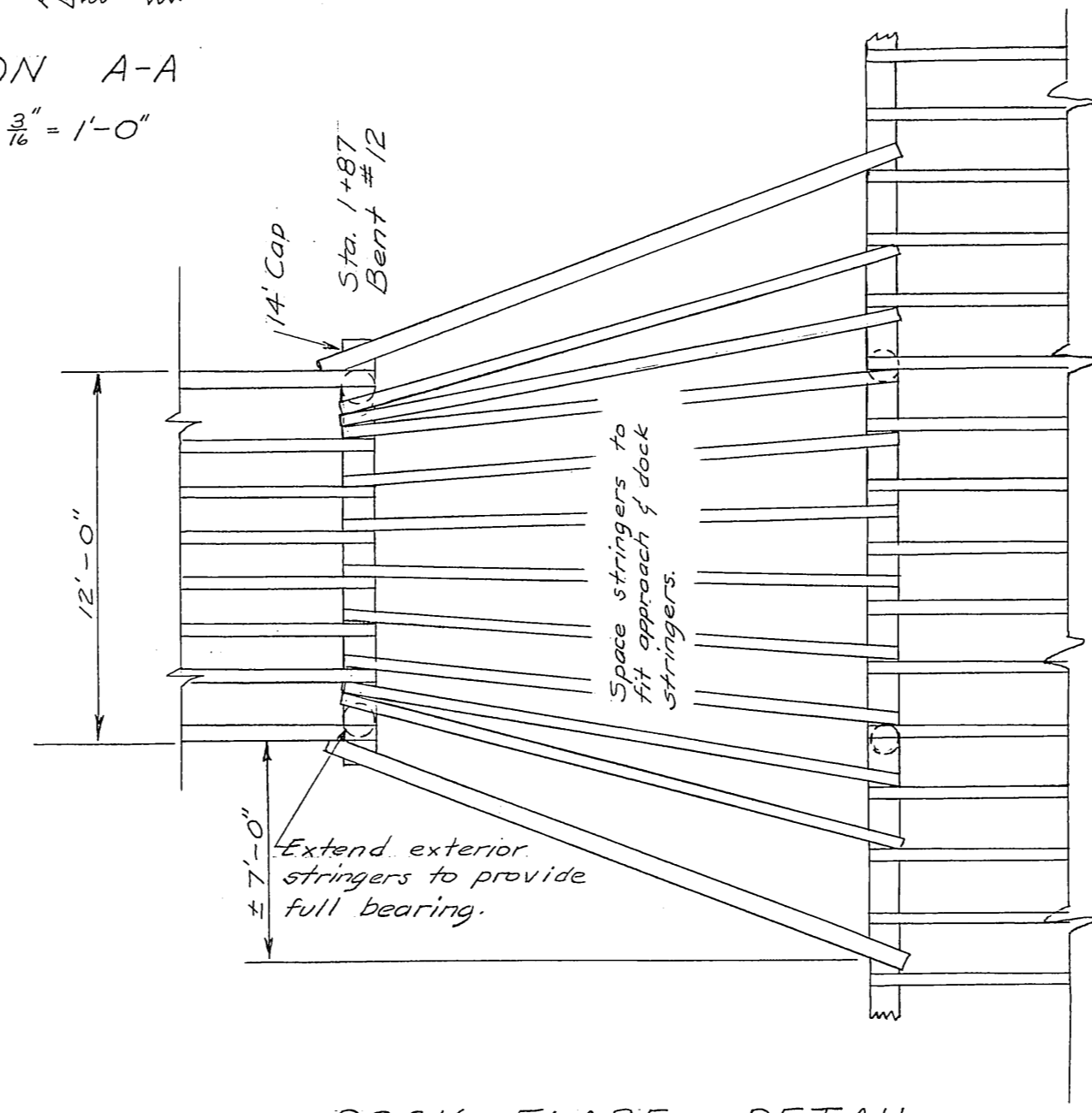
SURVEYED BY DS
DRAWN BY AS-aw
CHECKED BY BH



DOCK PILING & CAP LAYOUT
Scale 1"=10'

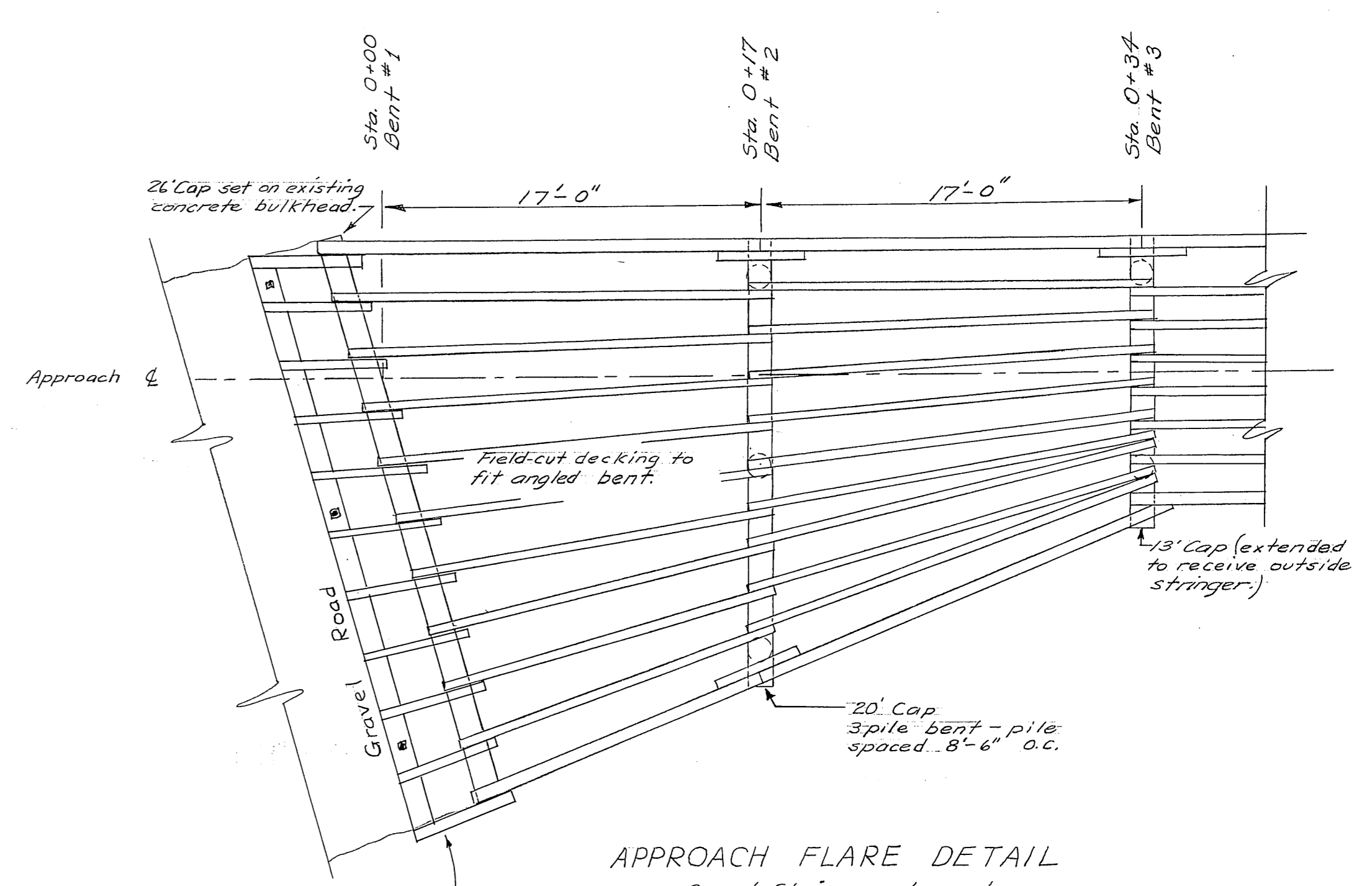


SECTION A-A
Scale 3/16"=1'-0"



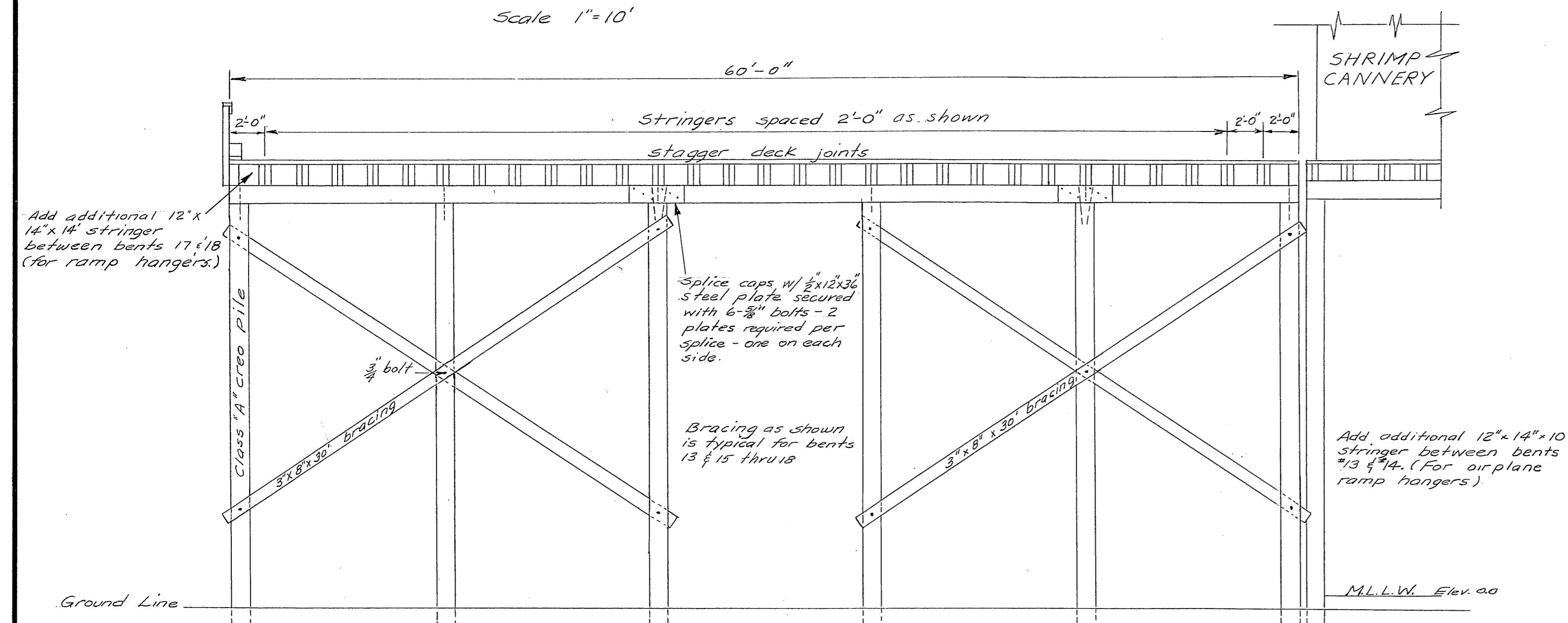
DOCK FLARE DETAIL
Cap & Stringer Layout
Scale 3/16"=1'-0"

NOTE
All flare stringers shall be of sufficient length to provide full bearing on caps.



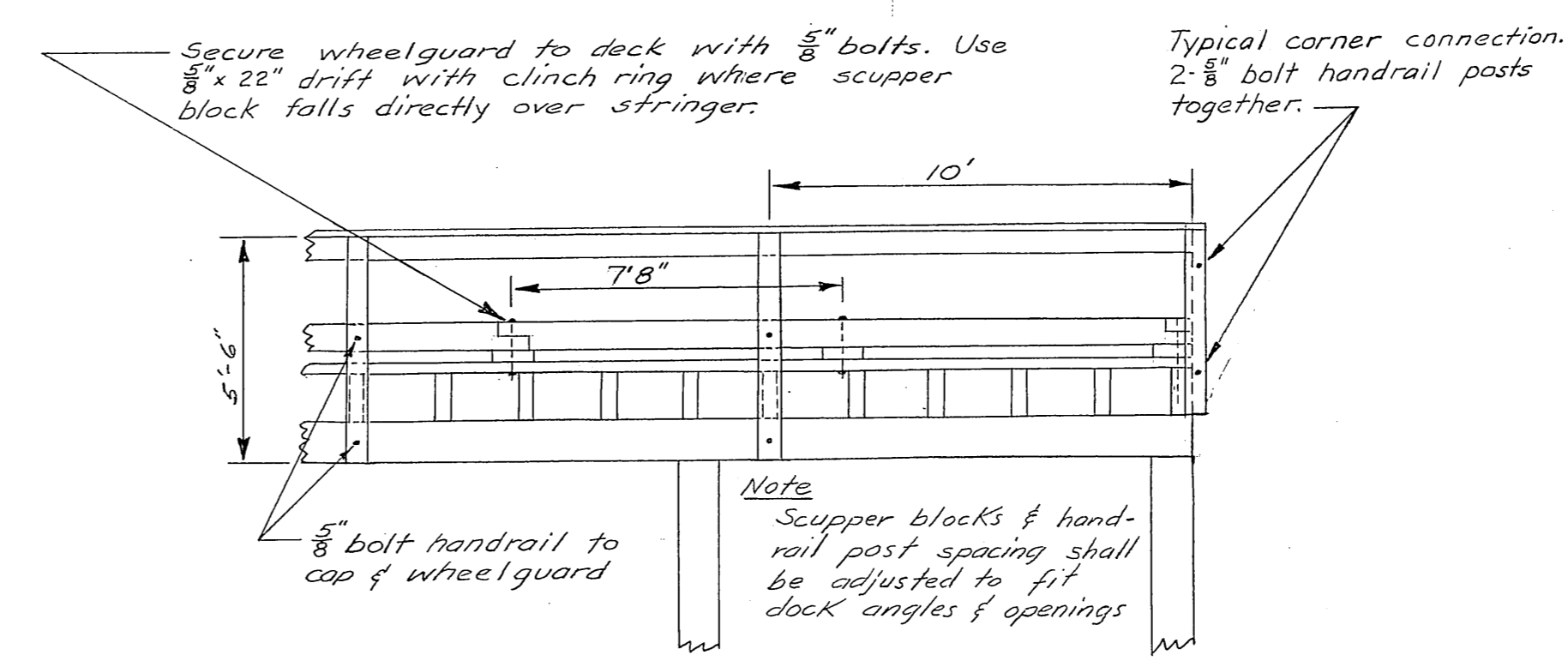
APPROACH FLARE DETAIL
Cap & Stringer Layout
Scale 3/16"=1'-0"

Extra cap & stringers used at start of the approach due to an error in the length of approach making it necessary to add 3'



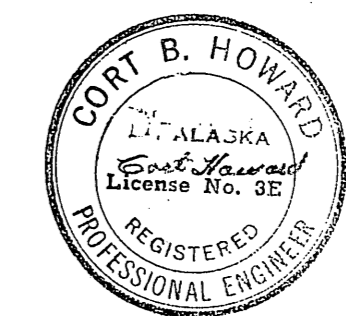
TYPICAL DOCK SECTION
All fastenings, materials, & dimensions shall conform to typical approach construction except as shown.
Scale 3/16"=1'-0"

Piling to be driven to refusal (overburden expected to vary from 3 to 6 feet.) Piling to be driven tip down.



HANDRAIL DETAIL
(For handrails parallel to caps)
Scale 1/4"=1'-0"

NOTES
Existing dock structure & approach to be dismantled. All piling to be pulled. Cero piles (33 dock pile & 14 approach pile) in good condition may be used on the approach. Any rot or splits shall be cut away in such a manner as to provide a completely sound pile in place. Centerline of new trestle shall follow (approx) that of the existing trestle. Omit handrails & wheelguards at both ramps & where buildings are encountered. Elev. of new structure will be governed by elev. of bent #1 (on concrete bulkhead).



NO.	DATE	REVISION	BY
STATE OF ALASKA DEPARTMENT OF PUBLIC WORKS DIVISION OF WATER AND HARBORS			
WRANGELL DOCK & APPROACH Dock Construction Details			
SCALE	As Shown	APPROVED	R. A. Downing COMMISSIONER
DATE	April 25, 1961		
PROJ. NO.	MA 618		
SURVEYED BY	DS	DRAWN BY	DS
		CHECKED BY	BH