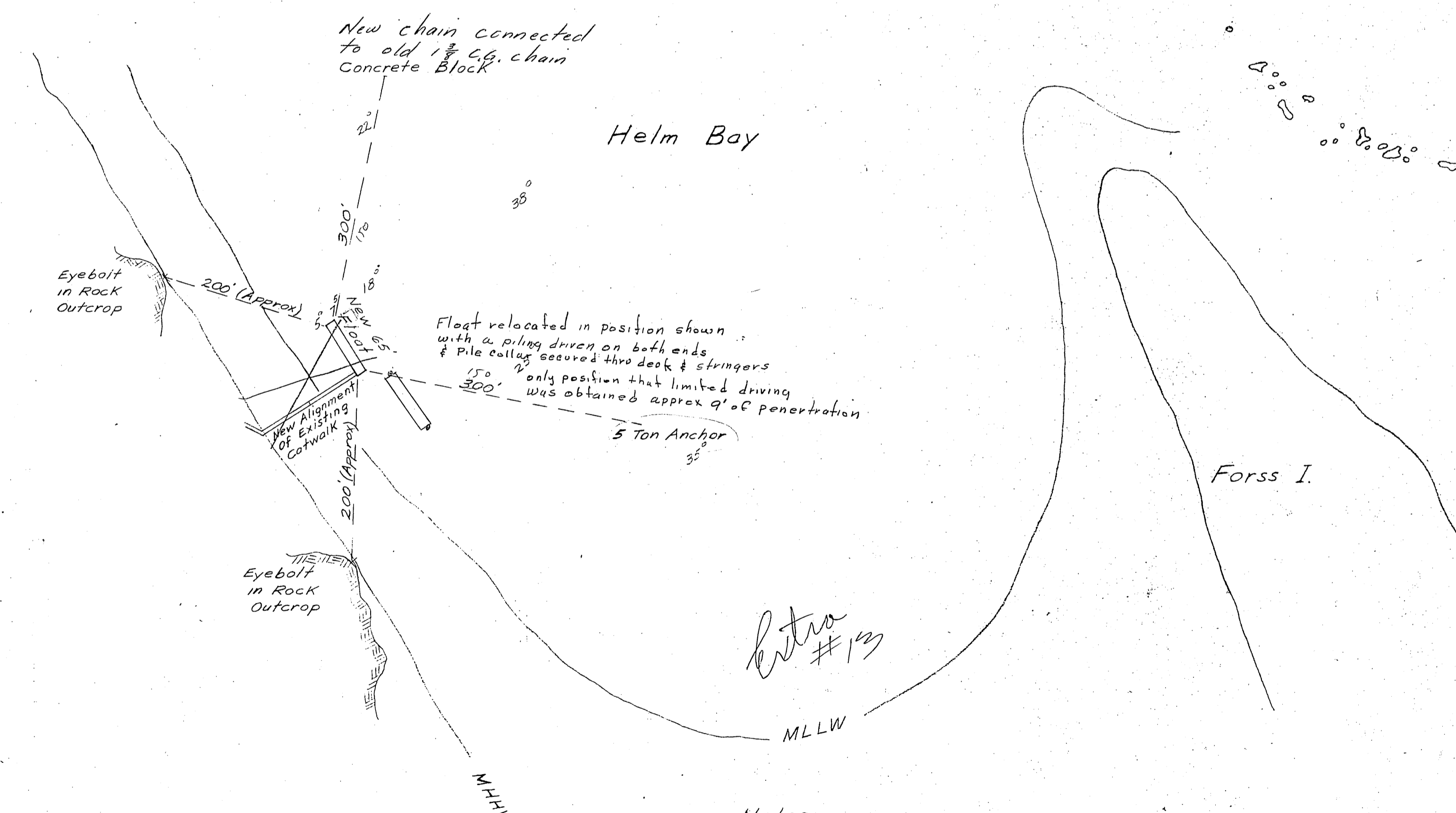
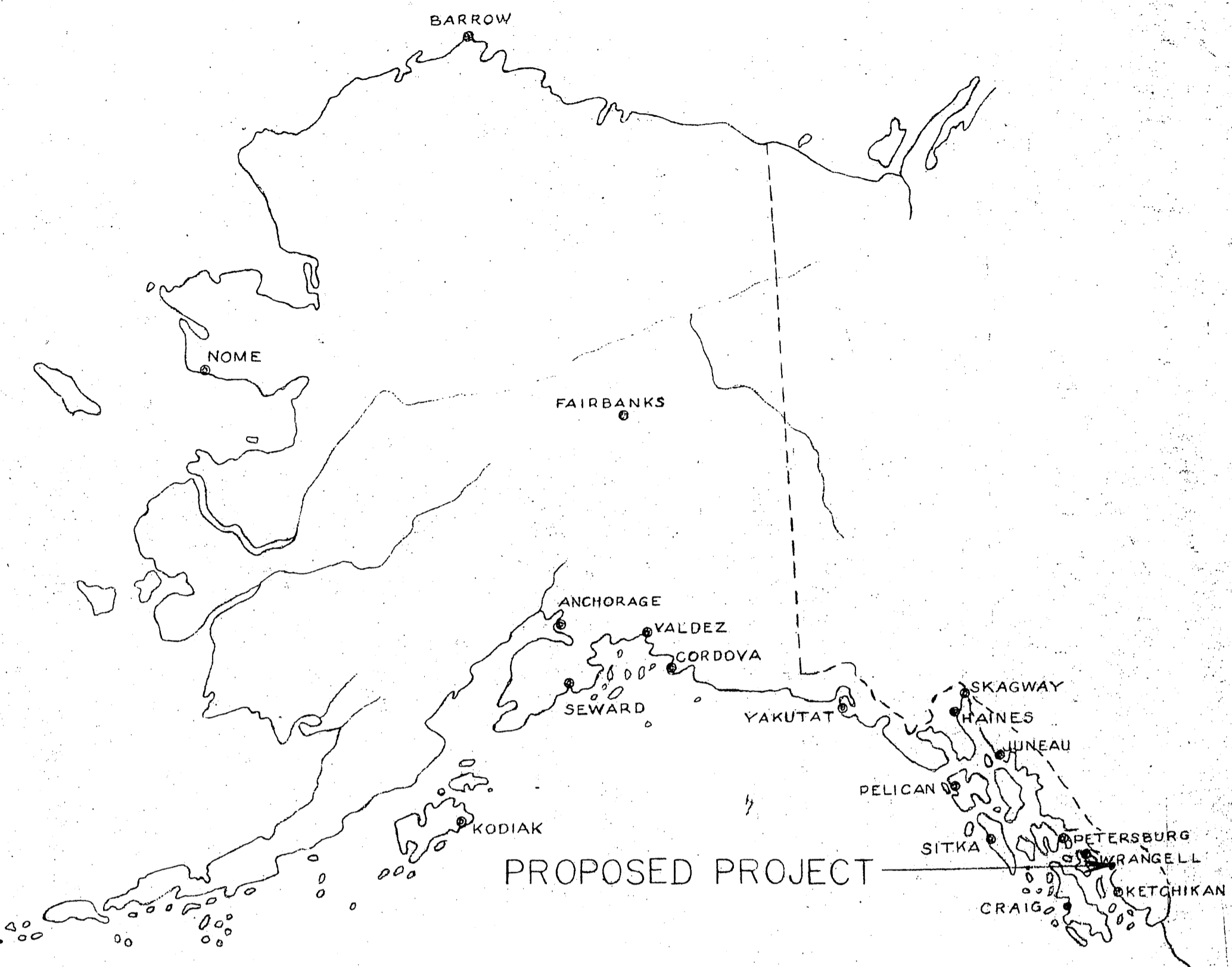


STATE OF ALASKA
 DEPARTMENT OF PUBLIC WORKS
 DIVISION OF WATER & HARBORS
HELM BAY FLOAT
PROJ. NO. W6110



WORK SUMMARY
 Major units of this project shall include construction & installation of a 12' x 65' float

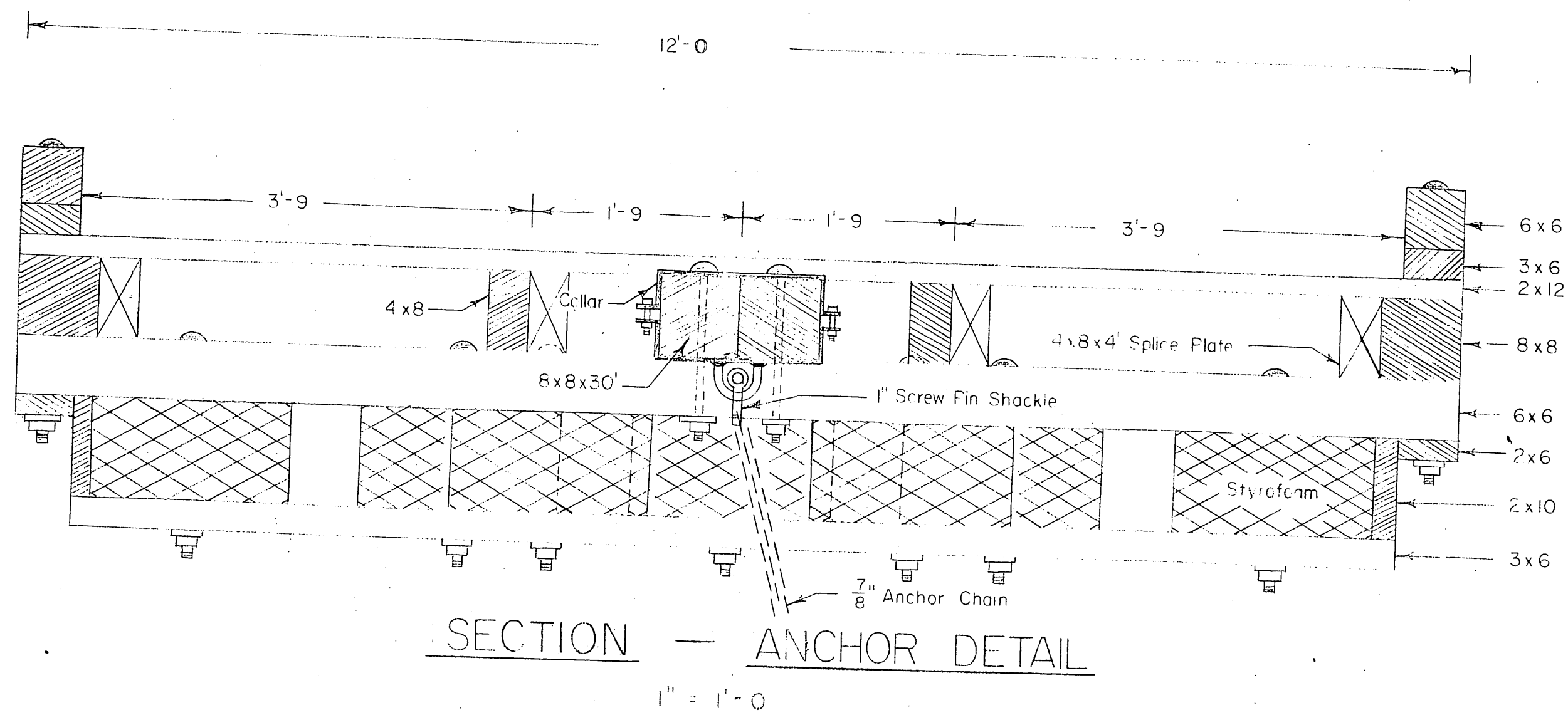
INDEX TO SHEETS
 LAYOUT SHEET ----- 1
 FLOAT DETAILS ----- 2

Intro #113

Notes
 Existing float to be removed & secured to the beach. Existing Catwalk (presently out of alignment) to be realigned approx. 90° to the shore line & secured to the new float with chain. The existing concrete block anchor presently located on the S.E. leg of the existing float is to be replaced with a 5-Ton anchor & the block used to anchor the N.E. leg of the new float. Anchor lines to be 3/8" galv. plow steel cable secured to 25' lengths of 3/8" galv. steel chain. The chain to be secured to the float as shown on the float details. Holes drilled in rock to be 1 1/2" x 24". Eyebolts to be 1" x 28" galv. steel secured in the hole with molten sulphur. 3/8" min. dia. eyebolts will be used to secure chain to float outboard stringer & catwalk sill.

Sounding in Feet, refer to MLLW

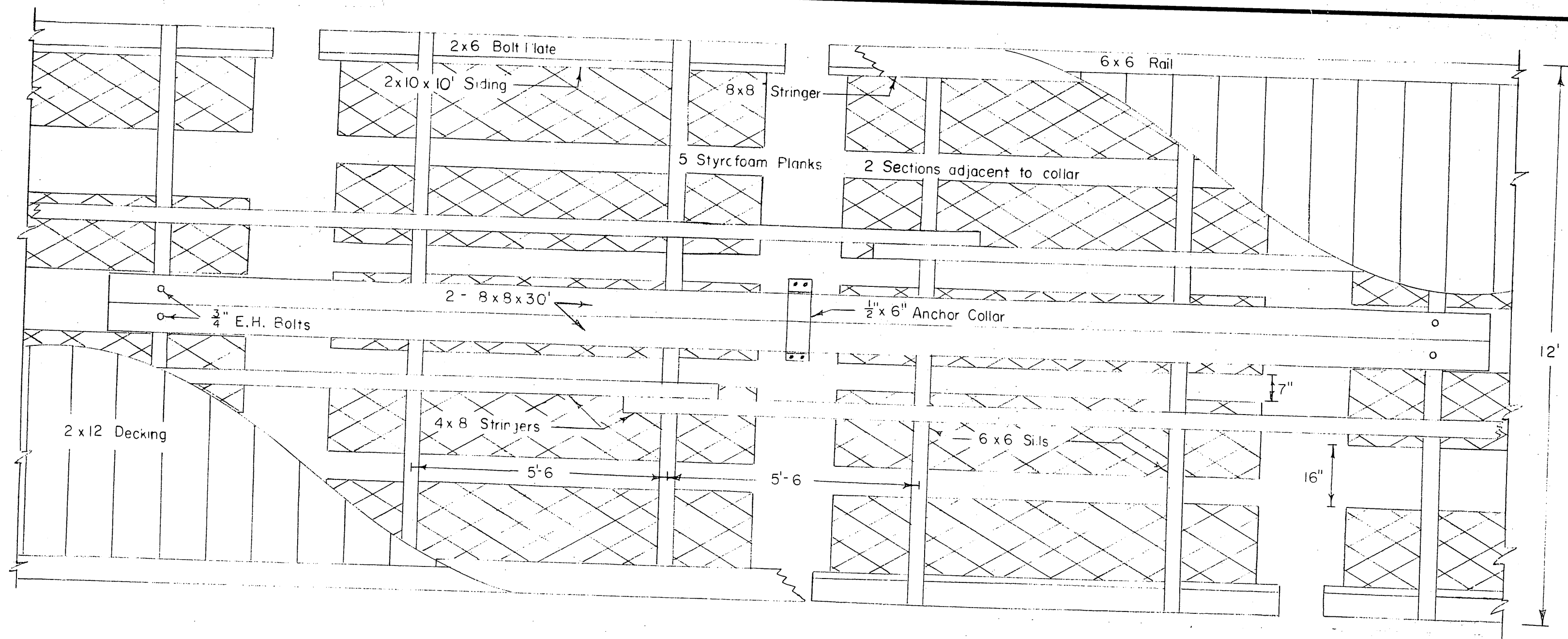
NO	DATE	REVISION	BY
STATE OF ALASKA DEPARTMENT OF PUBLIC WORKS DIVISION OF WATER AND HARBORS			
HELM BAY FLOATS HELM BAY, ALASKA			
SCALE 1"=100'		DATE 6-21-60	
PROJ NO. W6110		APPROVED <i>[Signature]</i> COMMISSIONER	
SURVEYED BY RPH		DRAWN BY D.D.S. CHECKED BY	



SECTION - ANCHOR DETAIL
1" = 1'-0"

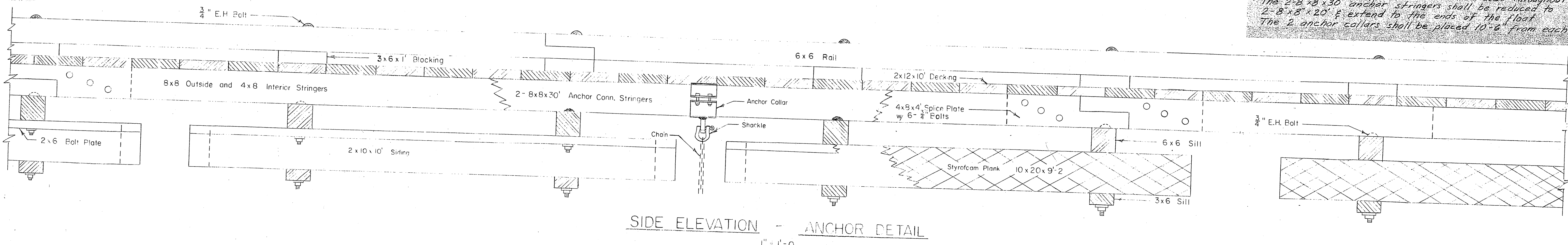
NOTE:

Anchor details same for all widths of float.

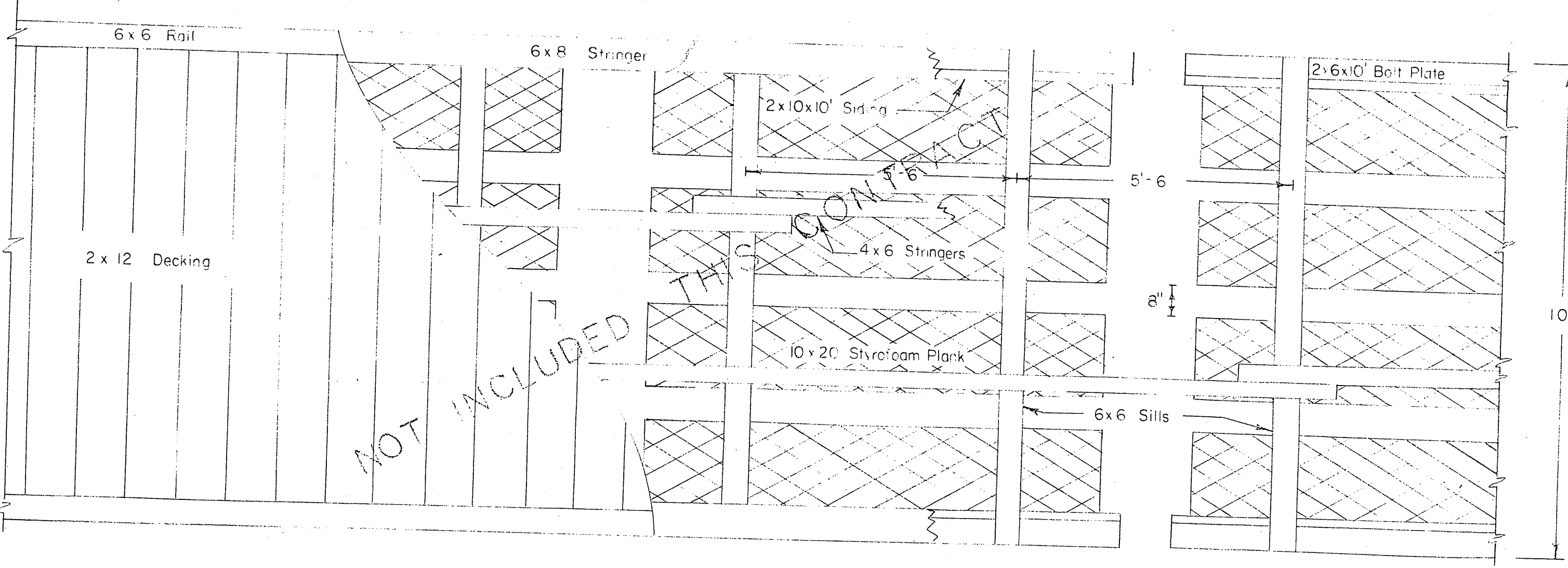


PLAN - ANCHOR DETAIL
1/2" = 1'-0"

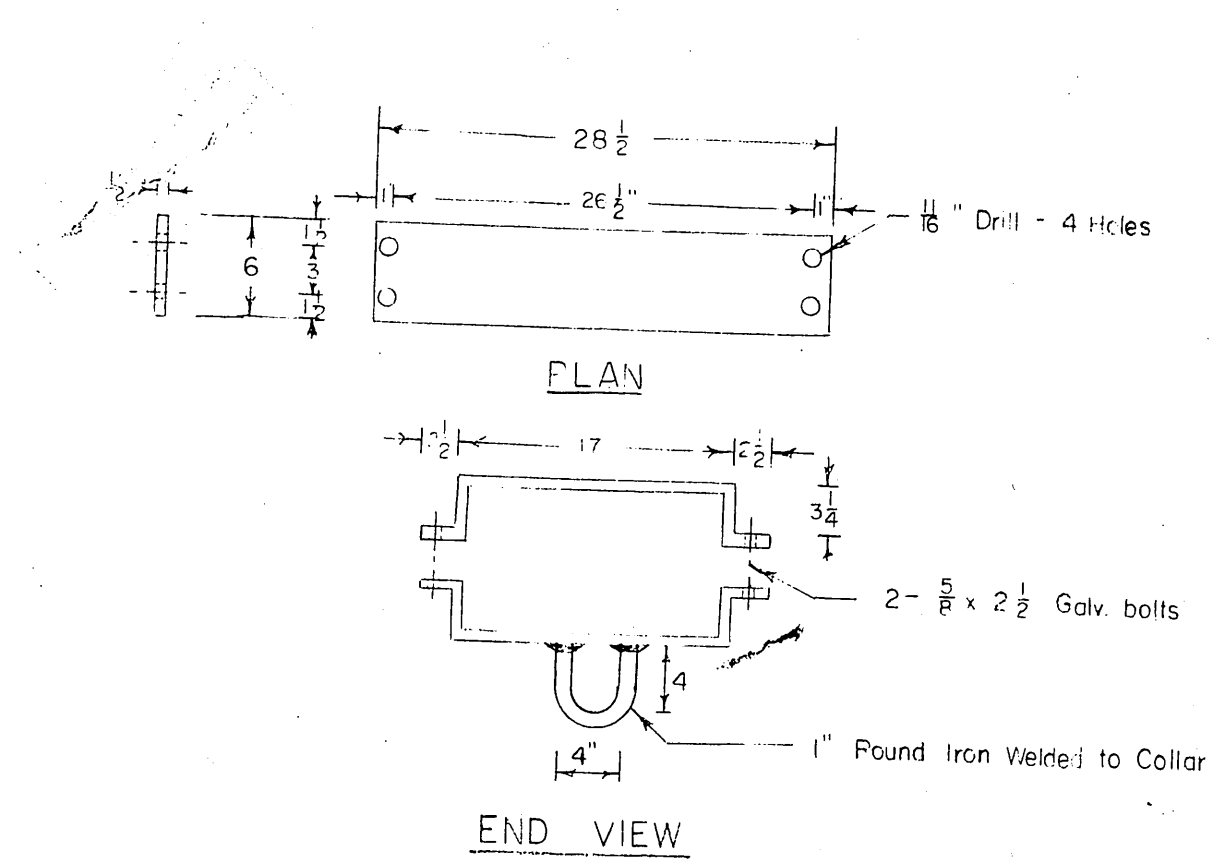
Float & Anchor details vary from that shown as follows:
5 styrofoam planks per section will be used throughout
The 2-8x8x30' anchor stringers shall be reduced to 2-8x8x20' & extend to the ends of the float
The 2 anchor collars shall be placed 10'-6" from each end



SIDE ELEVATION - ANCHOR DETAIL
1" = 1'-0"



PLAN - TYPICAL FLOAT
1/2" = 1'-0"



ANCHOR COLLAR DETAIL
1" = 1'-0"

	ROUGH	SELECT	STRUCT
SILLS (3x6)	"	S2S	"
" (6x6)	"	"	"
SIDING	ROUGH	CONSTRUCTION	"
BOLT PLATE	"	"	"
STRINGERS	S2E	"	"
BLOCKING	S1S	"	"
DECKING	"	"	"
TIE DOWN RAIL	ROUGH	"	"

NOTES

Bottom and top sills, bolt plate, siding and stringers to be Douglas Fir creosoted to 12 lb. retention. Decking, rail block and tie down rail to be Sitka Spruce. All hardware to be Galvanized. e.h. bolt = economy head bolt. Decking to be secured with two nails to each supporting member. A malleable iron washer to be between nut and wood surfaces in all instances, and a lock washer between nut and steel surfaces. A 2"x10"x1/8" end plate shall be nailed with 40 d nails to the siding members at each end of the float.

Native wood bearing surfaces & joints shall be treated with Western Marine Preservative WP1702

NO.	DATE	REVISION	BY
ALASKA HIGHWAY AND PUBLIC WORKS DEPARTMENT			
TYPICAL ANCHORED FLOATS			
SCALE	As Shown		
DATE	APPROVED R.A. Downing		
FILE NO.	ALASKA HIGHWAY COMMISSIONER		
SURVEYED BY	DRAWN BY RPH CHECKED BY WEIB		