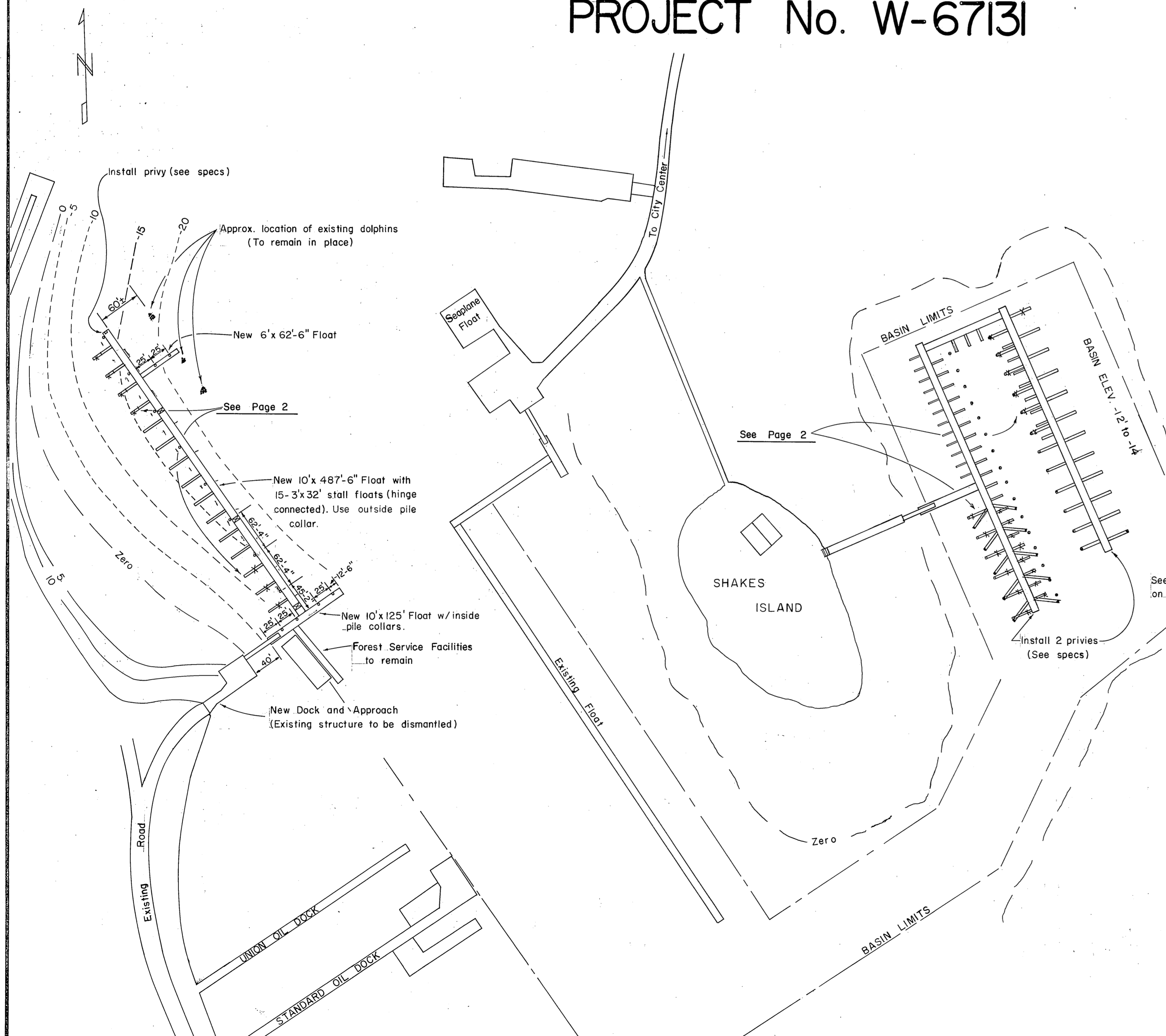
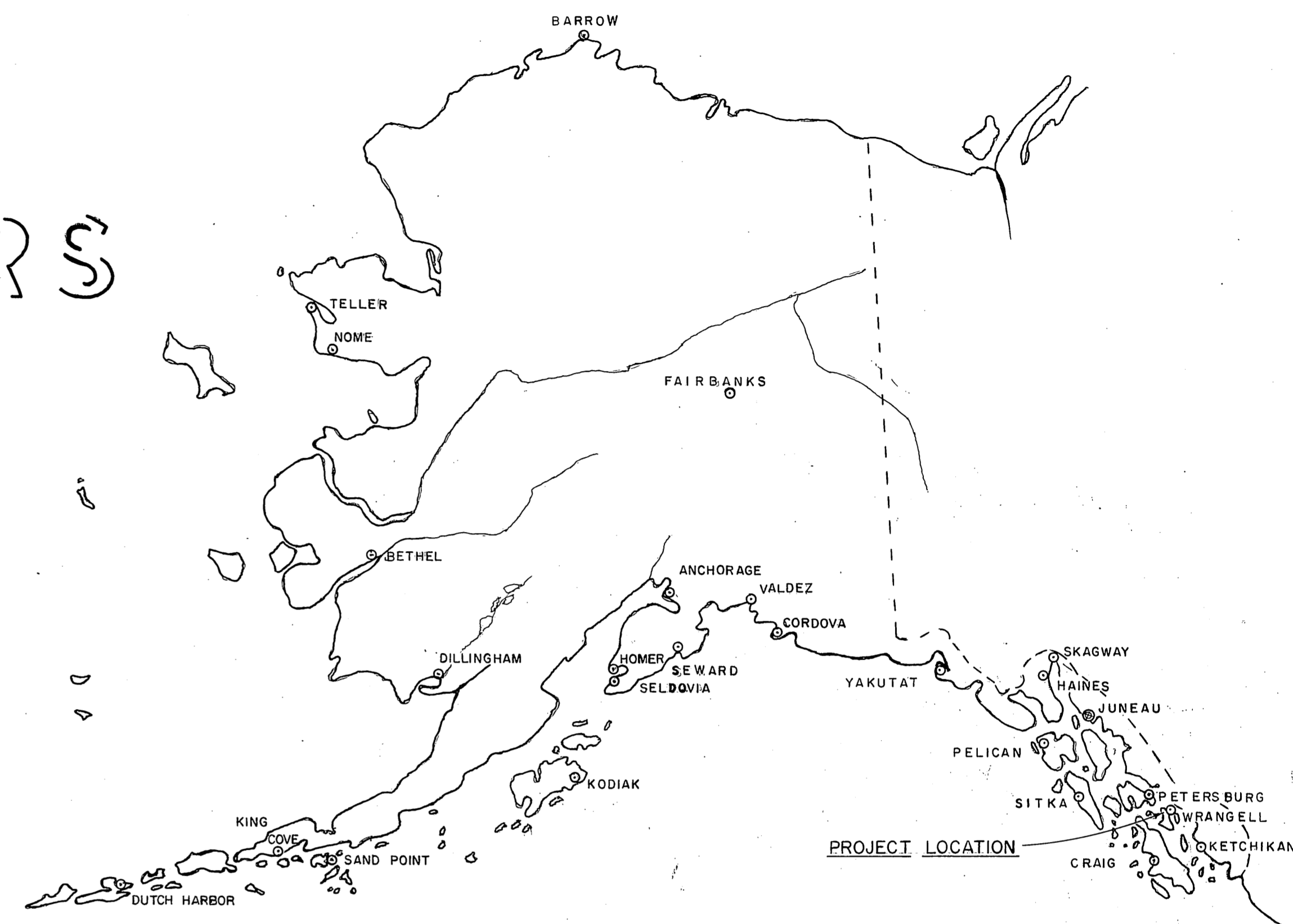


STATE OF ALASKA
 DEPARTMENT OF PUBLIC WORKS
 DIVISION OF WATER & HARBORS
 WRANGELL BOAT HARBOR FACILITIES
 PROJECT No. W-67131



See INNER HARBOR LAYOUT on Sheet No. 2 for details

NOTES

1. Existing floats adjacent to the breakwater and stall floats located in the Inner Harbor to be removed and disposed of in a manner acceptable to the engineer.
2. Existing 60' gangway to be salvaged and re-installed on new dock.
3. Existing utilities and 4" fuel pipeline located on breakwater float and dock to be removed by others.
4. Float pile penetration to be a minimum of 12' or refusal as may be determined by the engineer.
5. Float pile cutoff elev. to be +30.0' above MLLW.
6. All float piling on 10' wide float to be new Class A creosoted to 12 ret.
7. Of the 45 float & stall piling to be pulled 21 shall be selected & redriven in the 15 stall floats at the breakwater float & 6 stall floats in the inner harbor. Remaining salvaged piling shall be used in the approach & dock construction as req'd.

WORK SUMMARY

Major units of this project consist of removal & disposal of existing dock structure, log floats, & stall floats, pulling 25 creo. piling, redriving 21 19 salvaged piling, furnishing & driving 14 new creo. piling (880 L.F.), construction and installation of 11,360 ft² of polystyrene float, construction of 2,120 S.F. of dock & approach structure, & modification of 19 existing tire pile collars on existing floats.

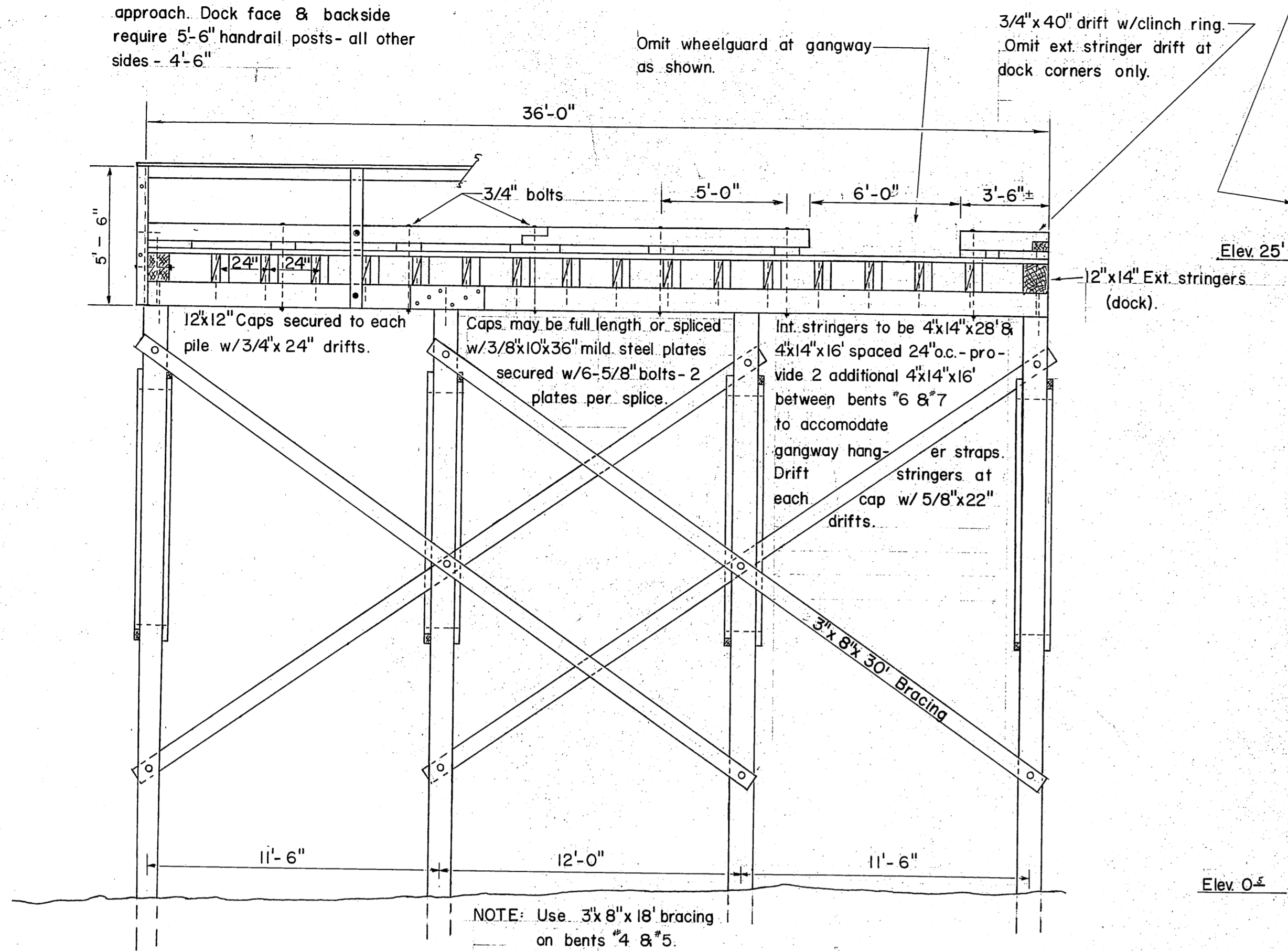
INDEX TO SHEETS

TITLE & LOCATION	SHEET
FLOAT LAYOUT & FABRICATION DETAILS	" 2
DOCK & APPROACH DETAILS	" 3
TYPICAL 10' FLOAT	" 4
TYPICAL STALL FLOATS	" 5
TYPICAL HINGE CONNECTION DETAILS	" 6

AS BUILT

DATE 9-22-66 APPROVED *[Signature]* COMMISSIONER

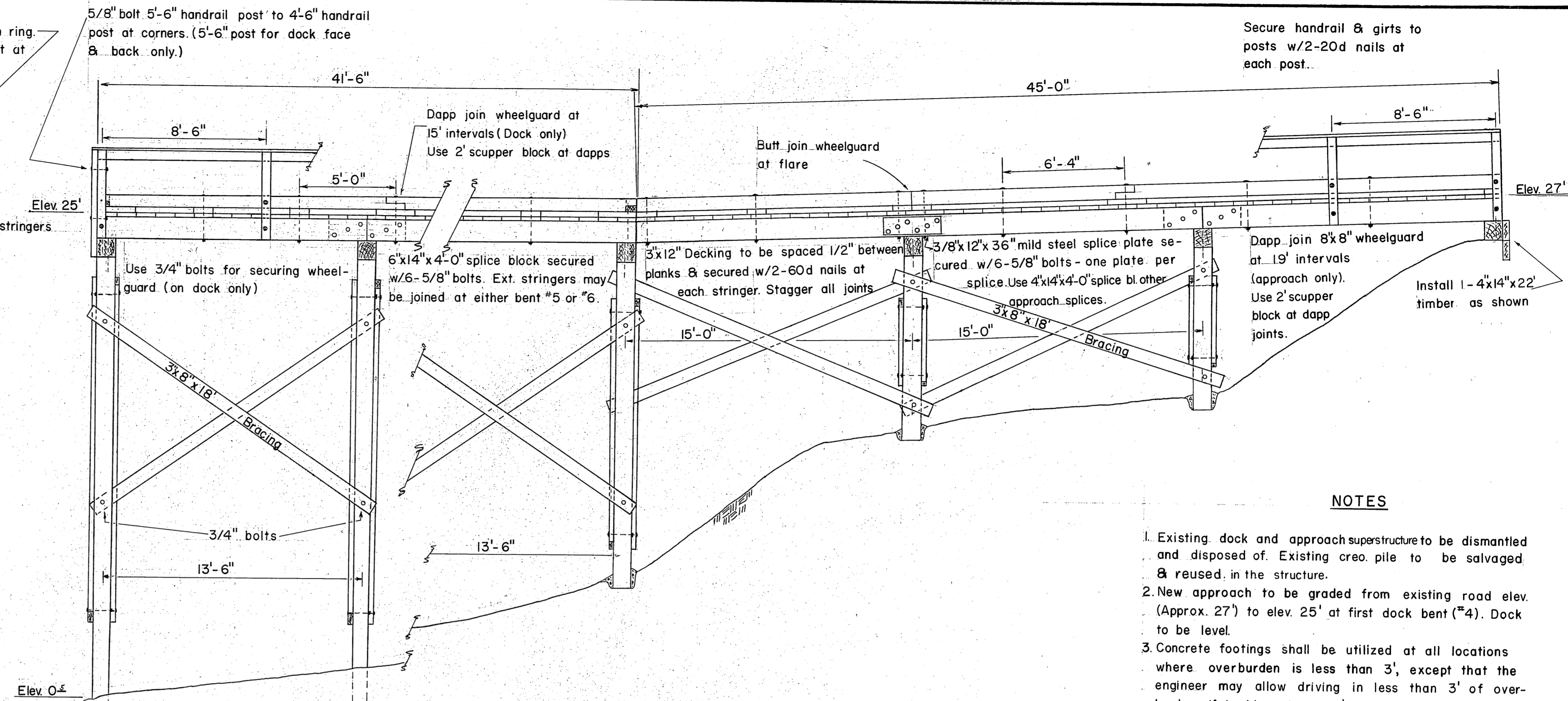
NOTE: Install handrails all sides dock & approach. Dock face & backside require 5'-6" handrail posts - all other sides - 4'-6"



All materials & fastenings shall conform to approach construction except as noted.

ELEVATION - DOCK FACE

1/4" = 1'-0"



END ELEVATION - DOCK & APPROACH

1/4" = 1'-0"

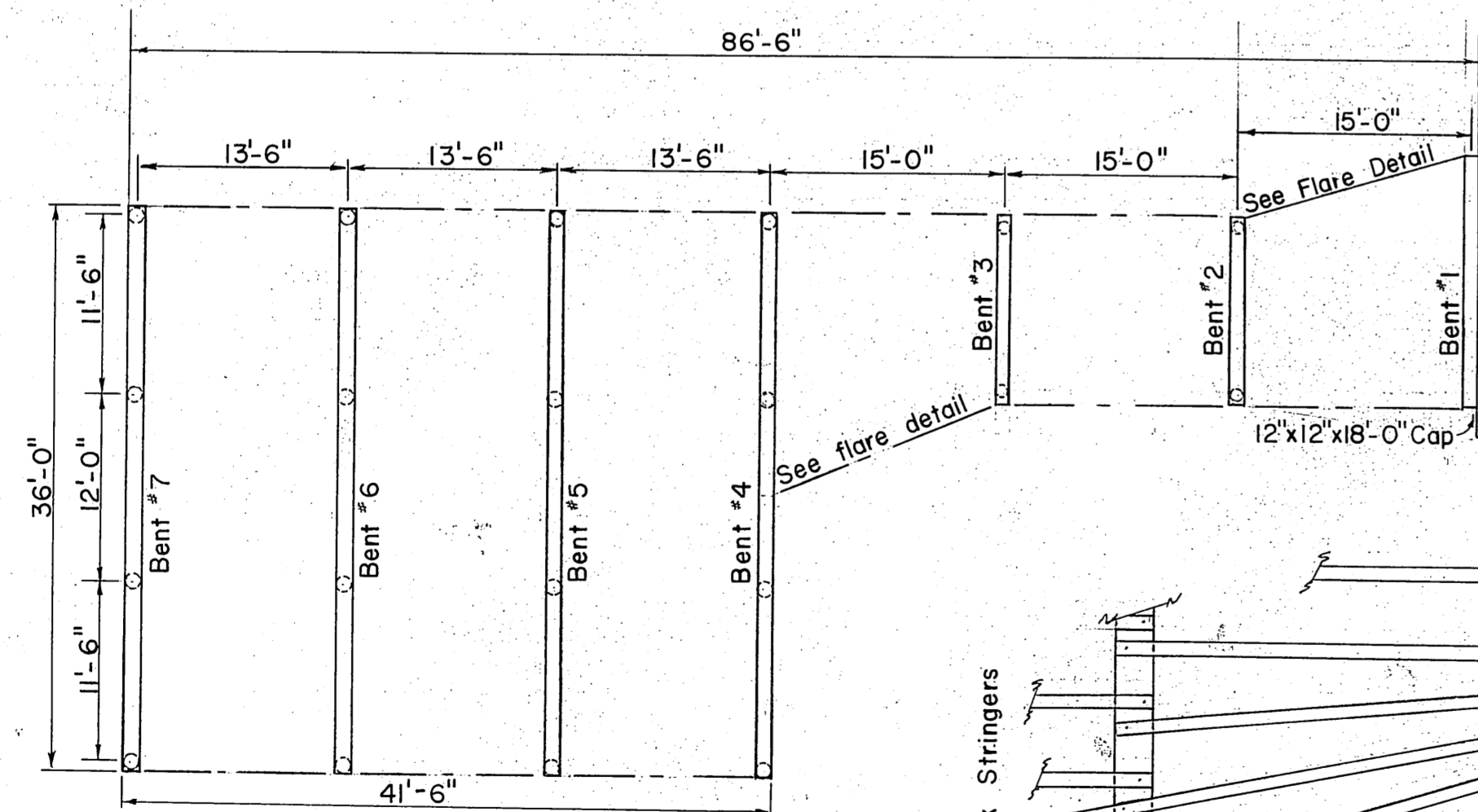
NOTES

- Existing dock and approach superstructure to be dismantled and disposed of. Existing creo. pile to be salvaged & reused in the structure.
- New approach to be graded from existing road elev. (Approx. 27') to elev. 25' at first dock bent (#4). Dock to be level.
- Concrete footings shall be utilized at all locations where overburden is less than 3', except that the engineer may allow driving in less than 3' of overburden, if in his opinion, mat'l is sufficiently firm to support the pile. Where applicable, pile shall be driven to refusal as determined by the engr.
- Existing gangway to be salvaged & refastened to the new dock stringers (beneath deck). Replace or repair one gangway hanger strap.

NOTES

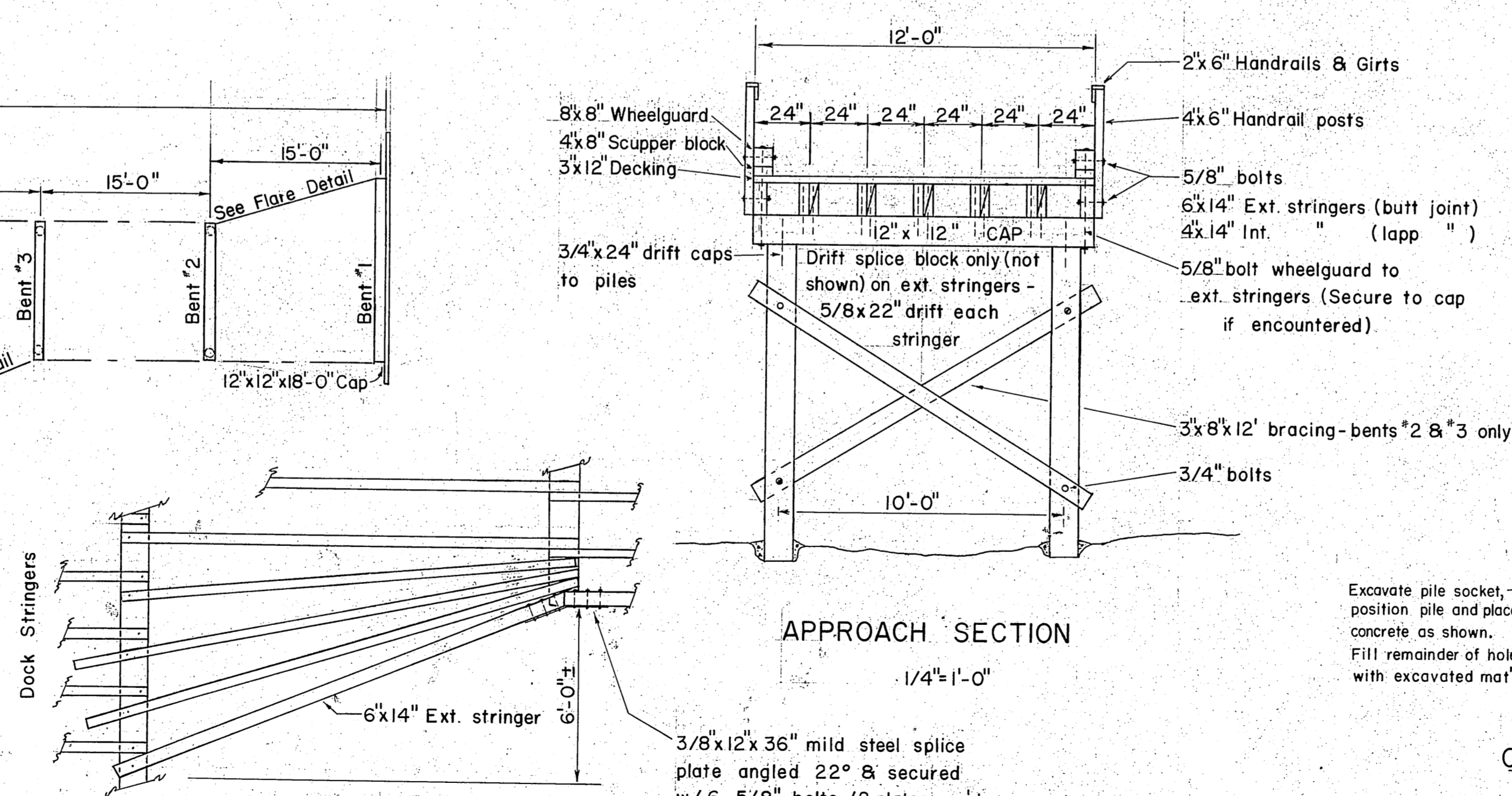
All hardware to be galvanized with malleable iron washers between nut and wood surfaces. All bolts to be of mushroom head type. Bolt holes to be drilled true size. Drift holes to be drilled 1/16" undersize. All pressure treated creosote material shall be cut to size prior to treatment.

- * All 12 creo. treatment to be full cell.
- * All 8 " " " " empty cell.



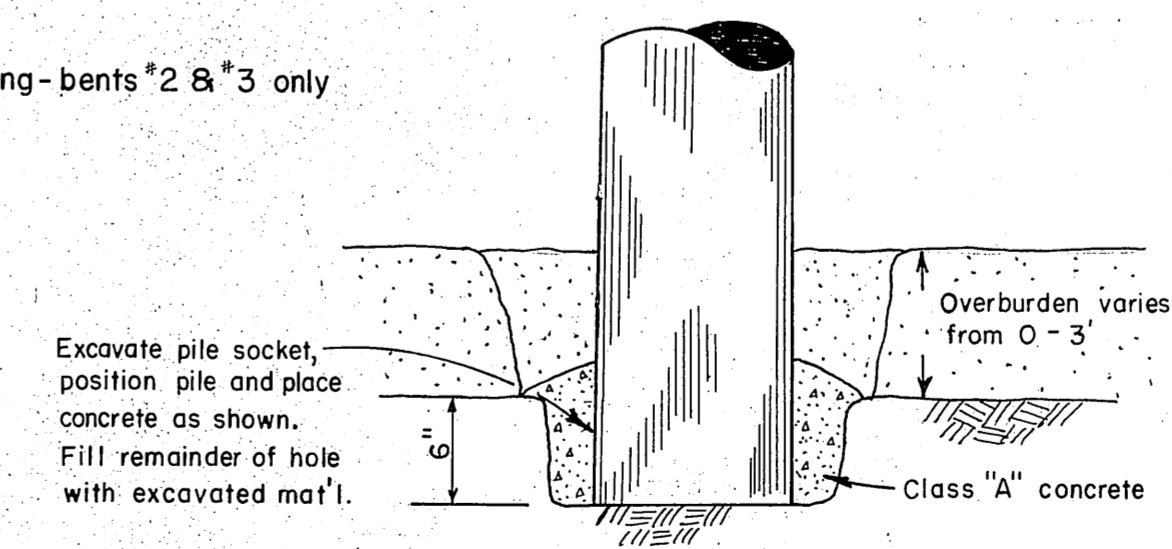
CAP - PILE LAYOUT

1" = 10'



APPROACH FLARE DETAIL

1/4" = 1'-0"



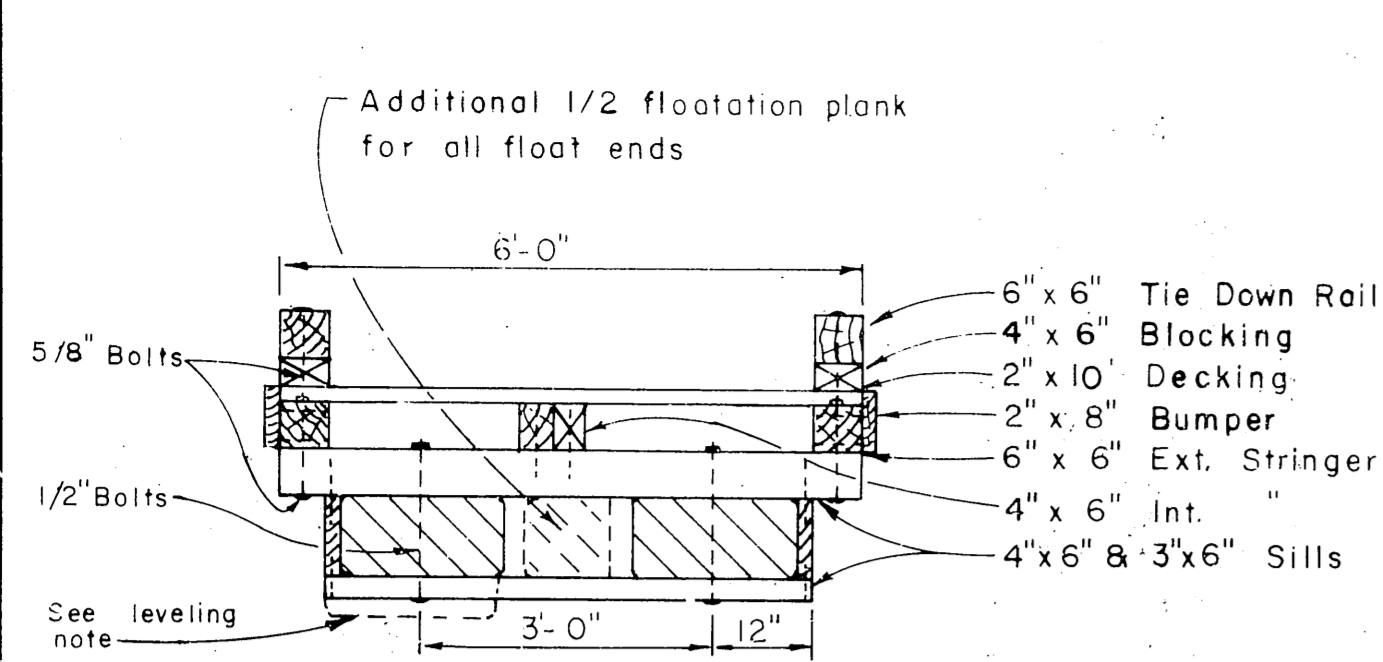
CONCRETE FOOTING DETAIL

1" = 1'-0"

MATERIALS				
ITEM	GRADE	DRESSING	CREO. TREAT	TYPE
Piling	Class B		*12 Ref.	Douglas Fir
Bracing	Construction	Rough		"
Caps	"	S-4-S	*8 Ref.	"
Ext. Stringers	"	"	"	"
Splice Blocks	"	S-2-E	"	"
Int. Stringers	"	"	"	"
Decking	"	S-1-S	"	"
Scupper Bl.	"	S-4-S	"	"
Wheelguard	"	"	"	"
Handrail Post	"	"	"	"
Girt	"	"	"	"
Handrail	"	"	"	"

DEPARTMENT OF PUBLIC WORKS
BUREAU OF WATER AND HARBORS
DOCK & APPROACH
CONSTRUCTION DETAILS

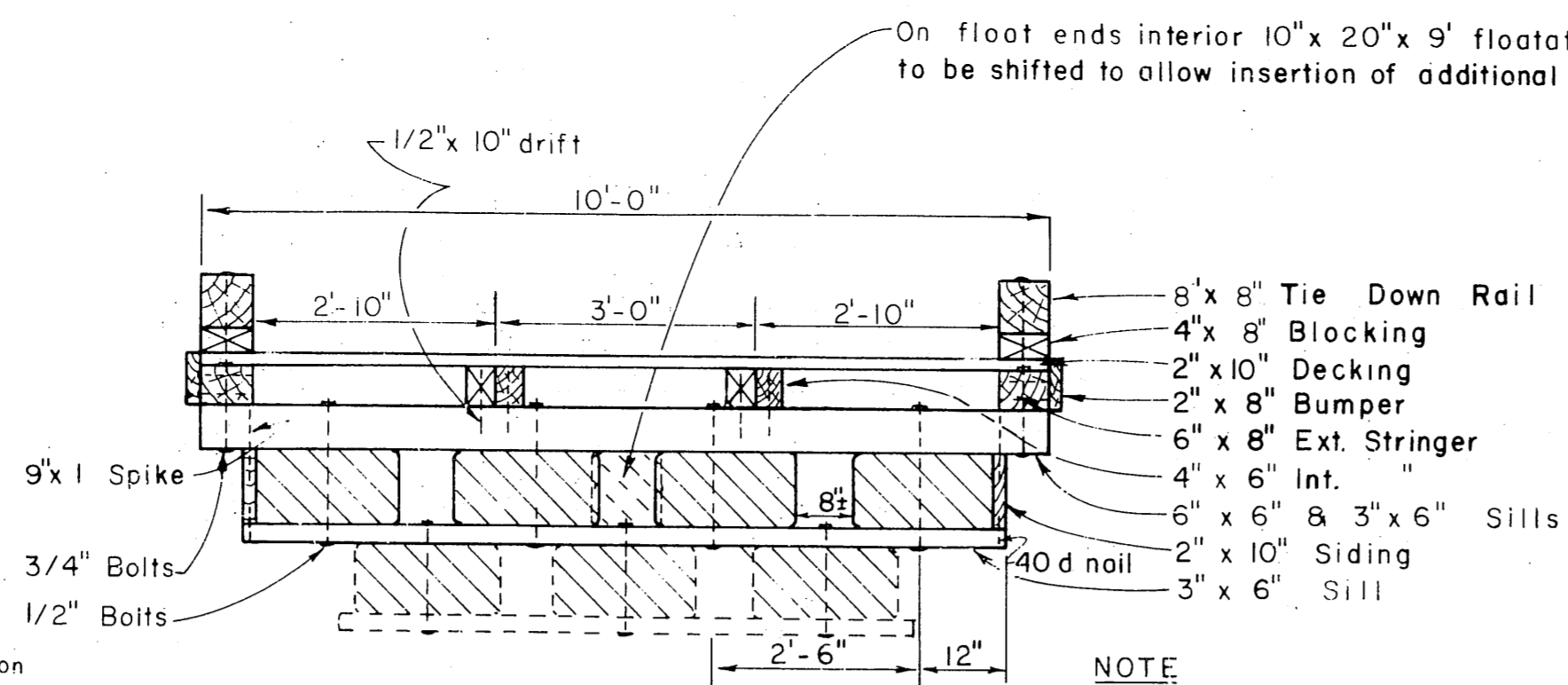
As shown
AUG. 30
W 67131
APPROVED DON STATTER
DIRECTOR



6' FLOAT SECTION
1/2" = 1'-0"

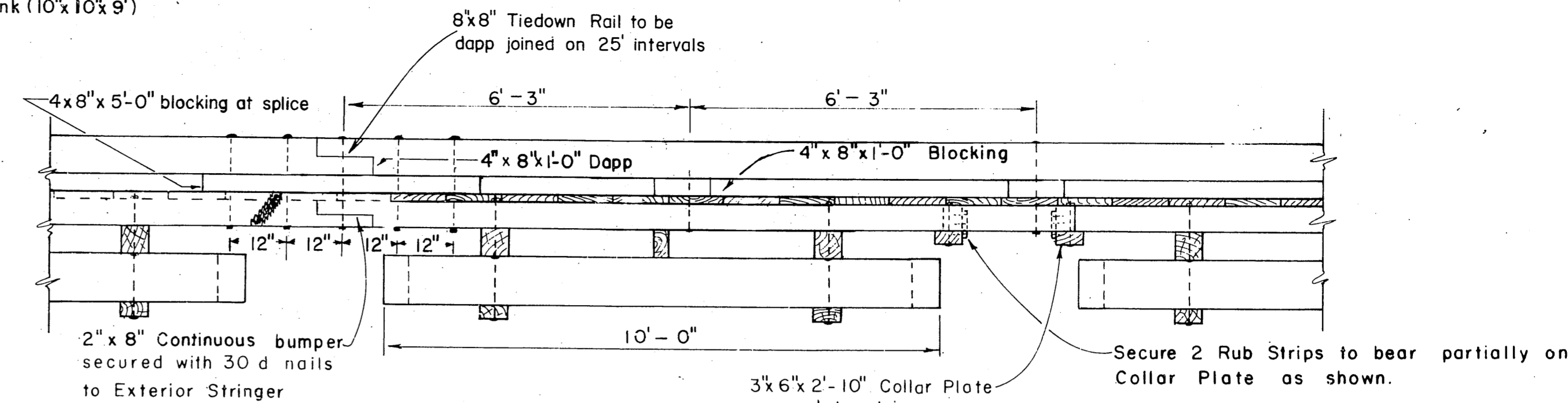
NOTE
6' float construction shall conform to 10' float constr. except as noted.

Leveling note
5'x20'x4' to 5' leveling floatation shall be installed as directed by the Engr. (required on approx. 20% of the still floats including 6' still floats) Place floatation between lower sill members with the outer edge bearing on siding members (cut side up) Pin floatation together with 1/2" x 14" dowel stock every 12".

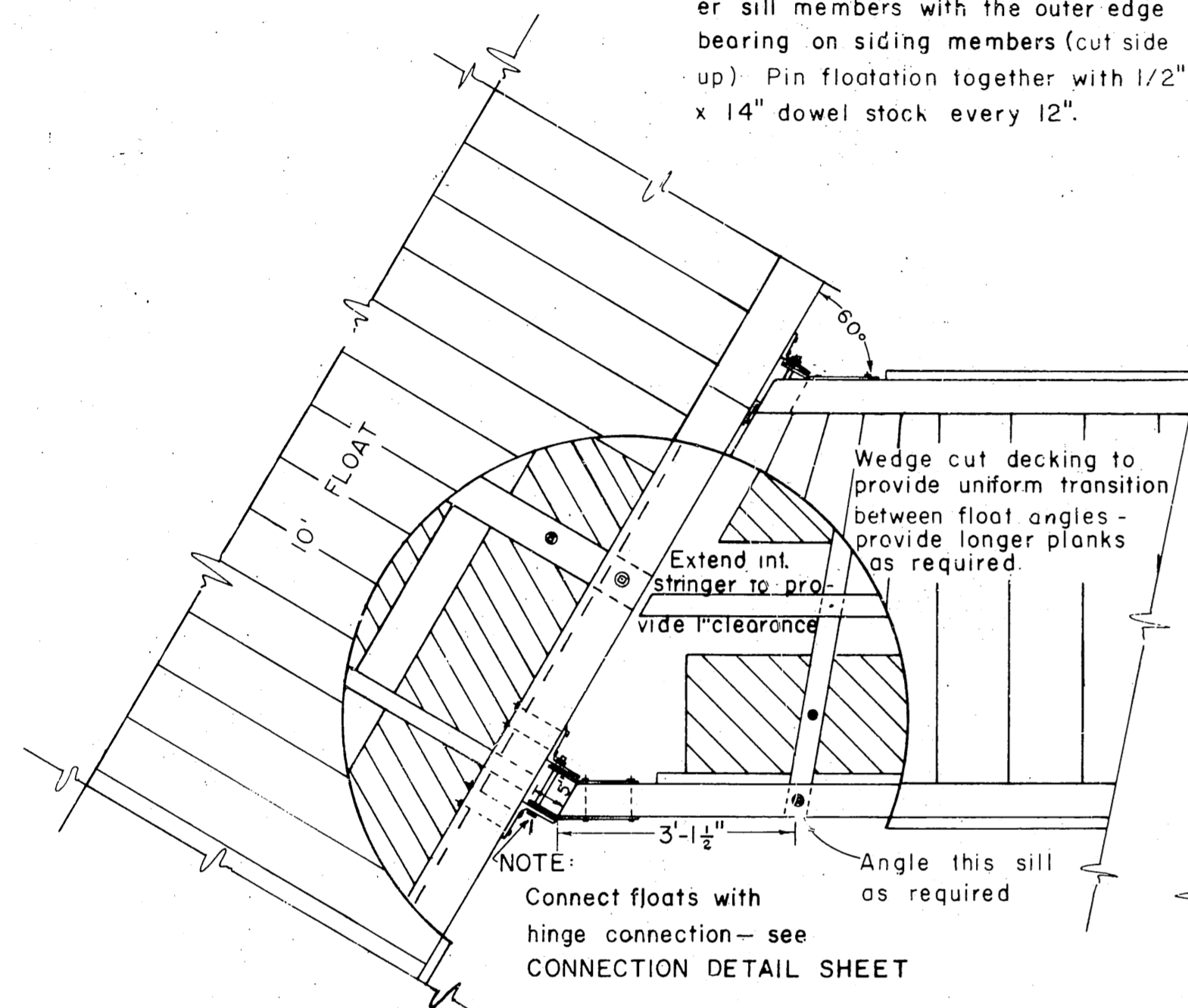


10' FLOAT SECTION
1/2" = 1'-0"

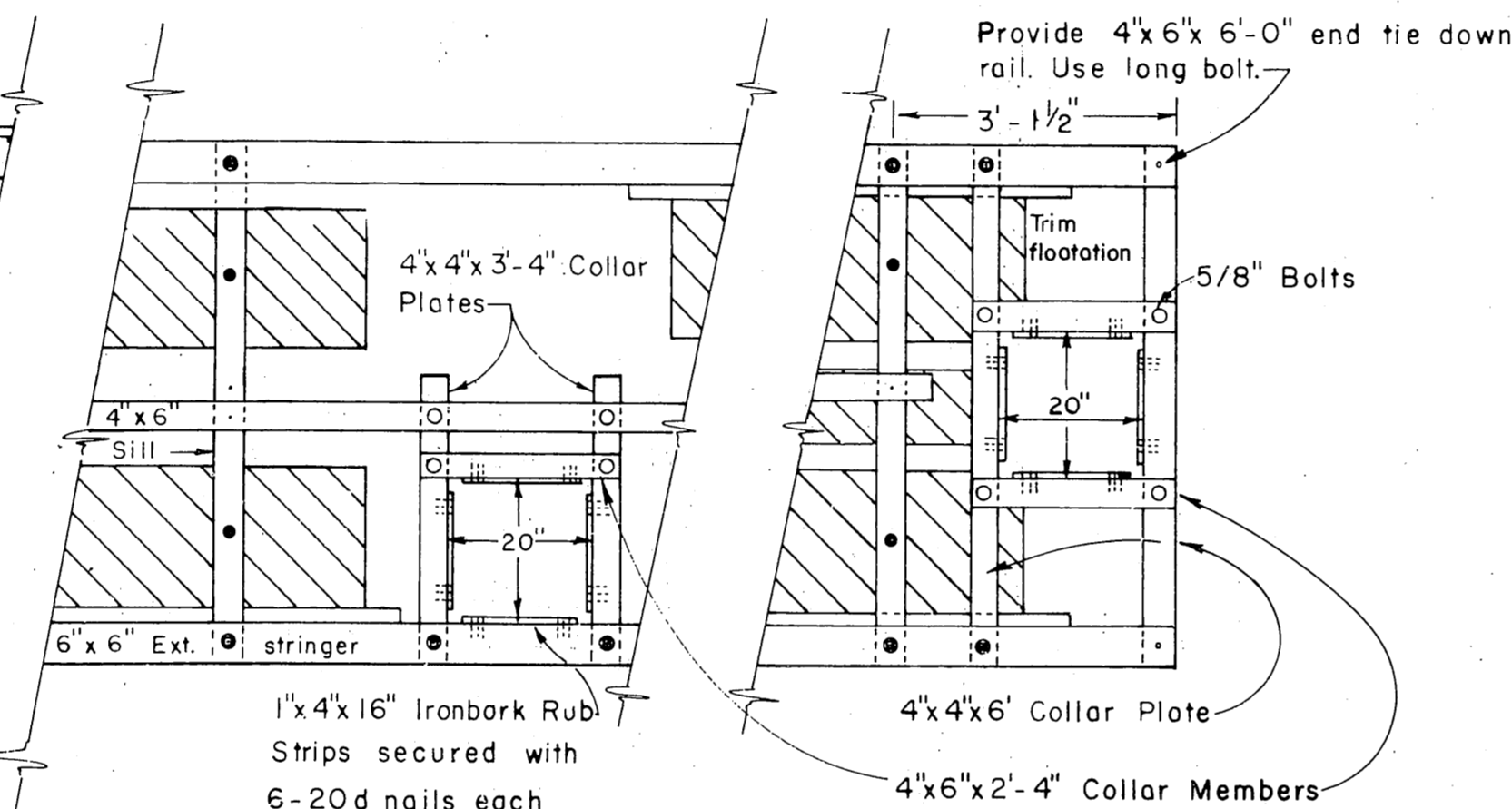
NOTE
Additional floatation to be added on gangway float section - 3 billets as shown timber gangway - 2 for steel gangway.



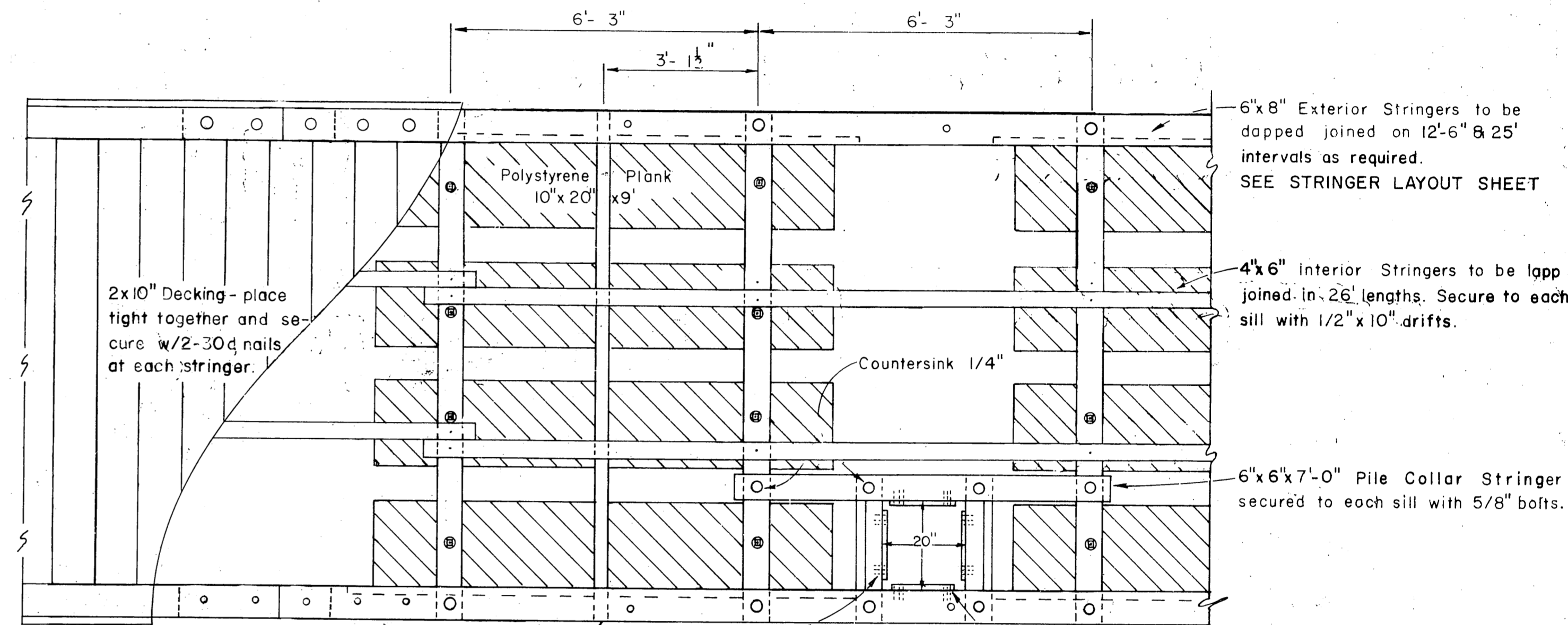
ELEVATION
1/2" = 1'-0"



NOTE
Connect floats with hinge connection - see CONNECTION DETAIL SHEET

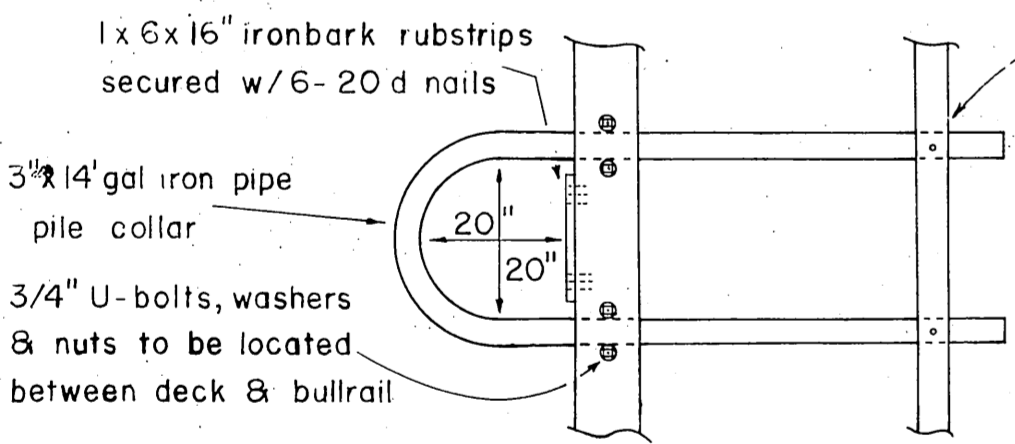


4"x6"x2'-4" Collar Members

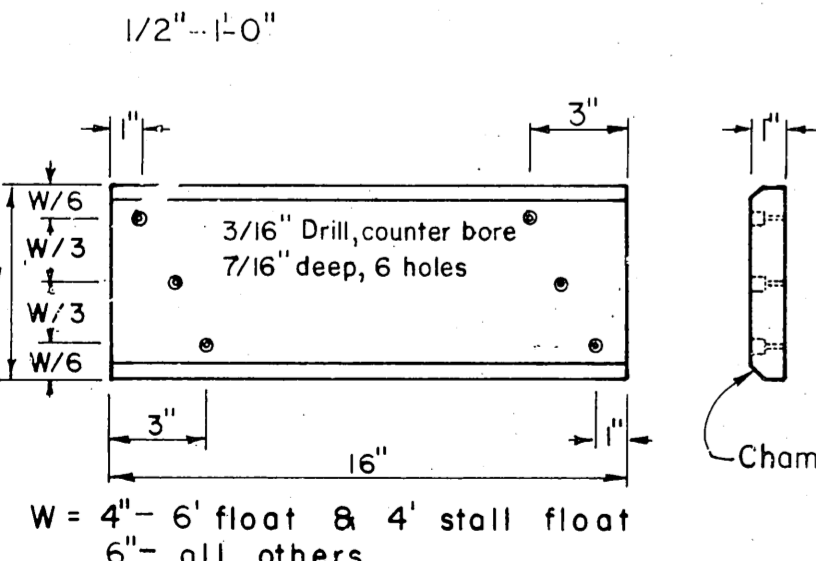


Place sill to exterior stringer bolts nuts down.

PLAN VIEW 10' FLOAT
1/2" = 1'-0"

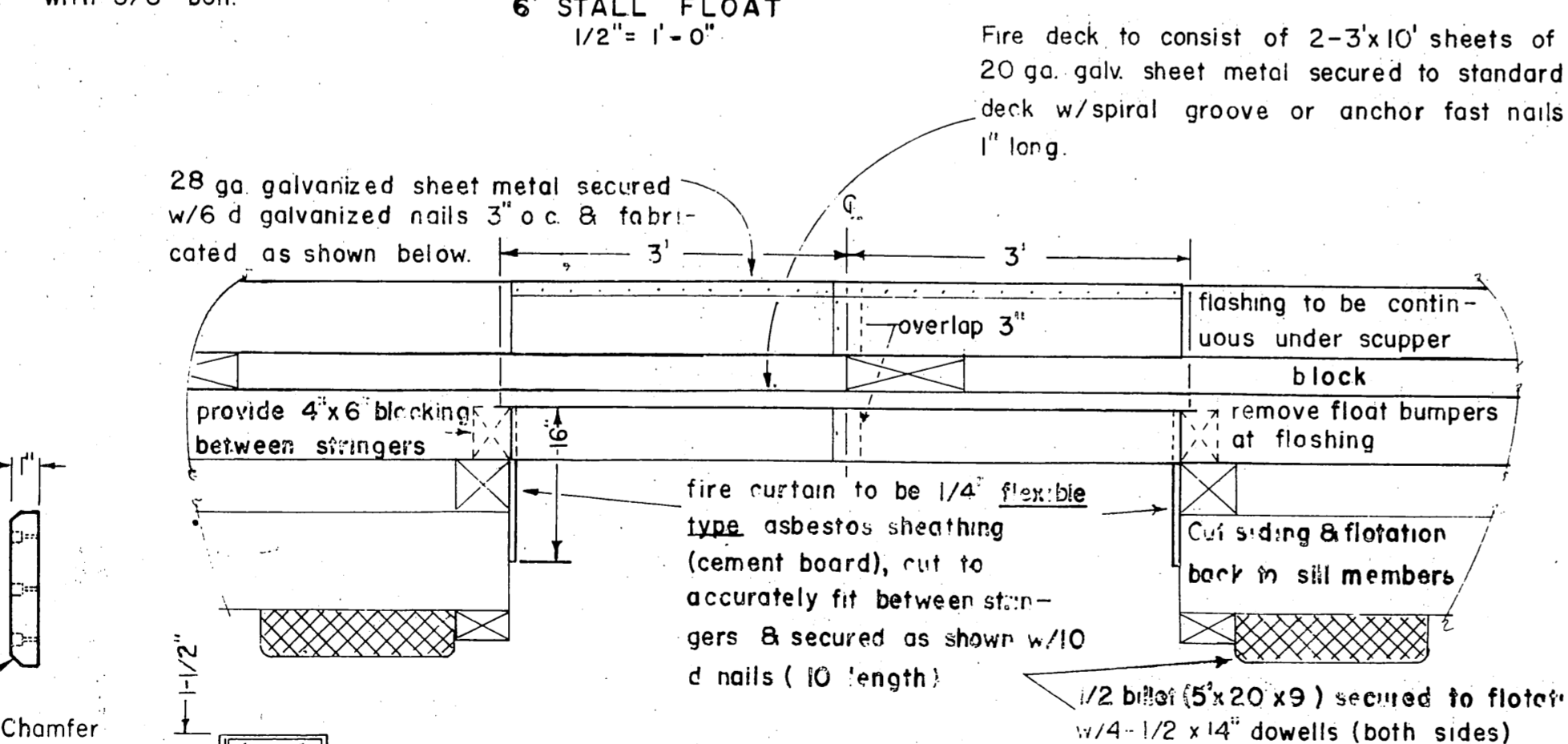


PIPE PILE COLLAR DETAIL
1/2" = 1'-0"



IRONBARK RUB STRIP
1" = 6"

CONNECTION & COLLAR DETAIL
6' STILL FLOAT
1/2" = 1'-0"



28 ga. galvanized sheet metal secured w/6 d galvanized nails 3" o.c. & fabricated as shown below.

Fire deck to consist of 2-3'x10' sheets of 20 ga. galv. sheet metal secured to standard deck w/spiral groove or anchor fast nails 1" long.

FIRE STOP DETAILS
Scale 3/4" = 1'-0"

NOTES
Prepunch 1/16" holes, 2" o.c. 1/4" from long edges. 1/16" holes, 8" o.c. 1/4" from ends, and 4 evenly spaced rows of 1/16" holes, 8" o.c. throughout sheet.
Provide 2 rows, 4 per row, spaced 12", of 6"x24 non-sold abrasive patches on fire deck.

* Exact width to conform to width of floatation material

MATERIALS		
ITEM	DRESSING	TREATMENT
3x6 - 4x6 & 6x6 upper sill	S-1-E 1/8" off	12 lbs. ret.
2x10 Siding	2x10 1/2"	" "
3x6 Lower Sill	Rough	" "
4x4 & 3x6 Collar Plates	Rough	8 lbs. ret.
4x6 Collar Members	S-2-E	" "
4x6 Interior Stringers	" "	" "
6x6 & 6x8 Ext. Stringers	S-4-S	" "
4x6 Collar Stringers	" "	" "
2x10 Decking	S-1-S-2-E	" "
4x6 & 4x8 Blocking	S-4-S	" "
6x6 & 8x8 Rail	" "	" "
2x8 Bumper	" "	" "

All material to be construction grade Douglas Fir
All piling will be Class A creosoted to 12 lbs. retention
All 12 lb. ret. creosoted treatment to be Full Cell
All 8 " " " " Empty Cell

PRE-DRILLED BOLT HOLES

COLLAR MEMBERS - all holes
SILLS - holes for floatation plank bolts
STRINGERS - 1. holes for stringer to sill bolts

TIE DOWN RAIL - all holes
PILE COLLAR STRINGER - 10' FLOAT - all holes

FIELD DRILLED BOLT HOLES

SILLS - 1. holes for stringer to sill bolts
2. pile collar stringer to sill
PILE COLLAR INT STRINGER - 6' FLOAT - all holes
RAIL BLOCKING - all holes
COLLAR PLATES - all holes
EXT. STRINGER - 1. holes for tie down rail bolts
2. " " " " pile collar plate bolts

REVISIONS MARCH 1965

- Omit end plates.
- Clarified pre-drilling note.
- Change decking gap from 1/2" to 3/4".
- Change 2"x10" rough siding members to 2"x10 1/2" actual size.
- Change 3"x6", 4"x6" and 6"x6" upper sills from rough to S-1-E 1/8" off.
- Revised hinge connection and 6' float pile collar.
- Change sill spacing from 6'-0" to 6'-3".

REVISIONS JAN 1966

- Add polyethylene barrier note
- Delete reference to extruded polystyrene billets
- Change deck nails from 20d to 30d

NOTES

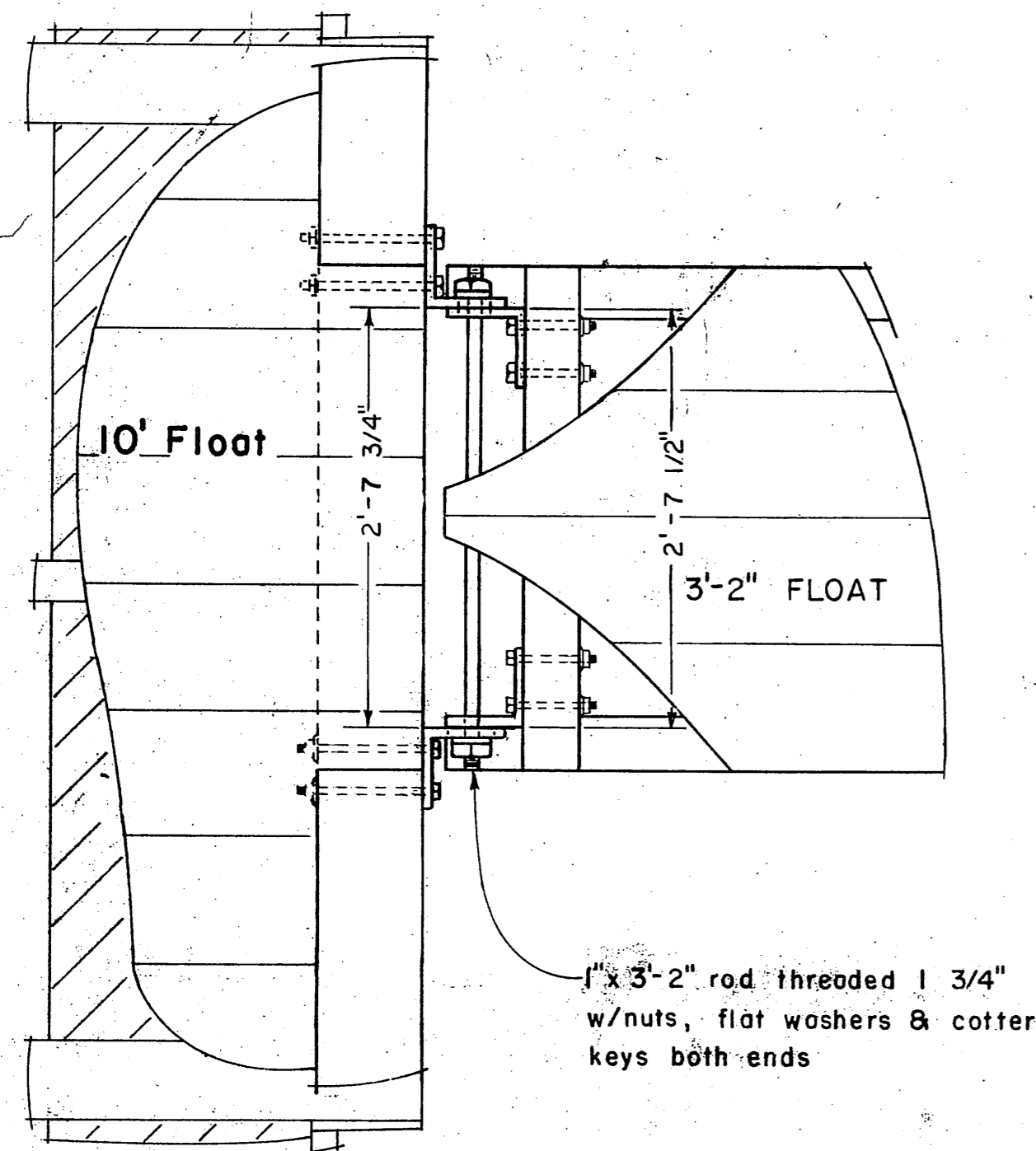
All hardware to be hot-dipped galvanized. A malleable iron washer shall be placed between all nut and wood surfaces. All bolts to be of the economy headed type. Bolt holes to be drilled true size except sill bolt holes for floatation planks 1/8" oversize. Drift holes to be drilled 1/16" undersize. All field drill holes shall be treated with hot creosote oil. All pressure treated creosote material shall be cut to size prior to treatment. Tie down rails shall extend across all float ends except under gangway. All bolt heads facing decking shall be countersunk 1/4" inch previous to treatment. Field drill all drift bolt holes. A barrier of 6 mil black polyethylene shall be placed between the contact surfaces of all creosote timber and floatation material (except float siding members)

REVISIONS JUNE 1966

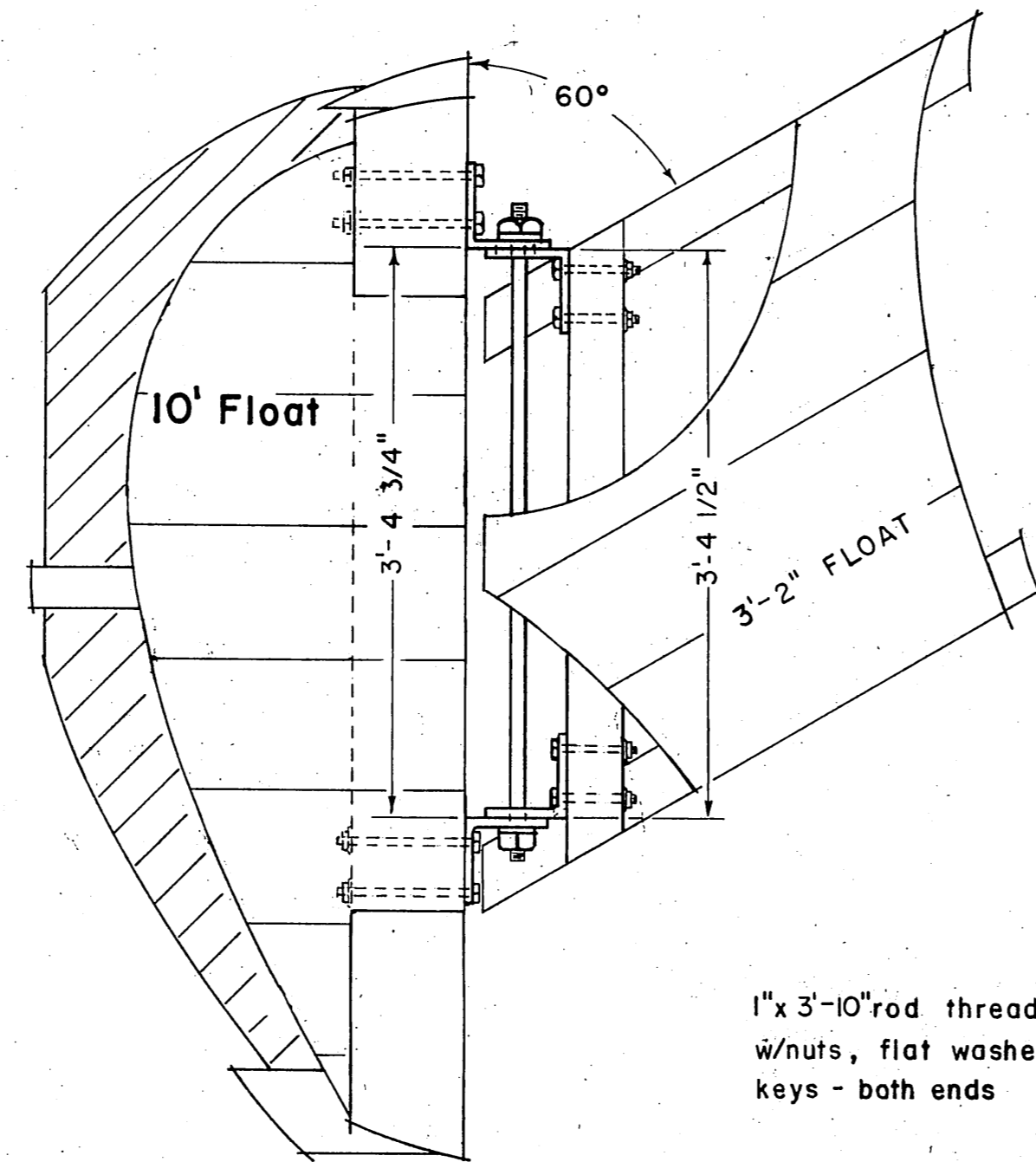
- Change deck to 2x10 placed tight together.
- Change stringer & rail splice locations - delete splice block

STATE OF ALASKA DEPARTMENT OF PUBLIC WORKS DIVISION OF WATER AND HARBORS		
TYPICAL FLOATS		
SCALE AS SHOWN	DATE March 1965	APPROVED DON STATTER DIRECTOR
DESIGNED BY RPH-DS	DRAWN BY D W	CHECKED BY DS

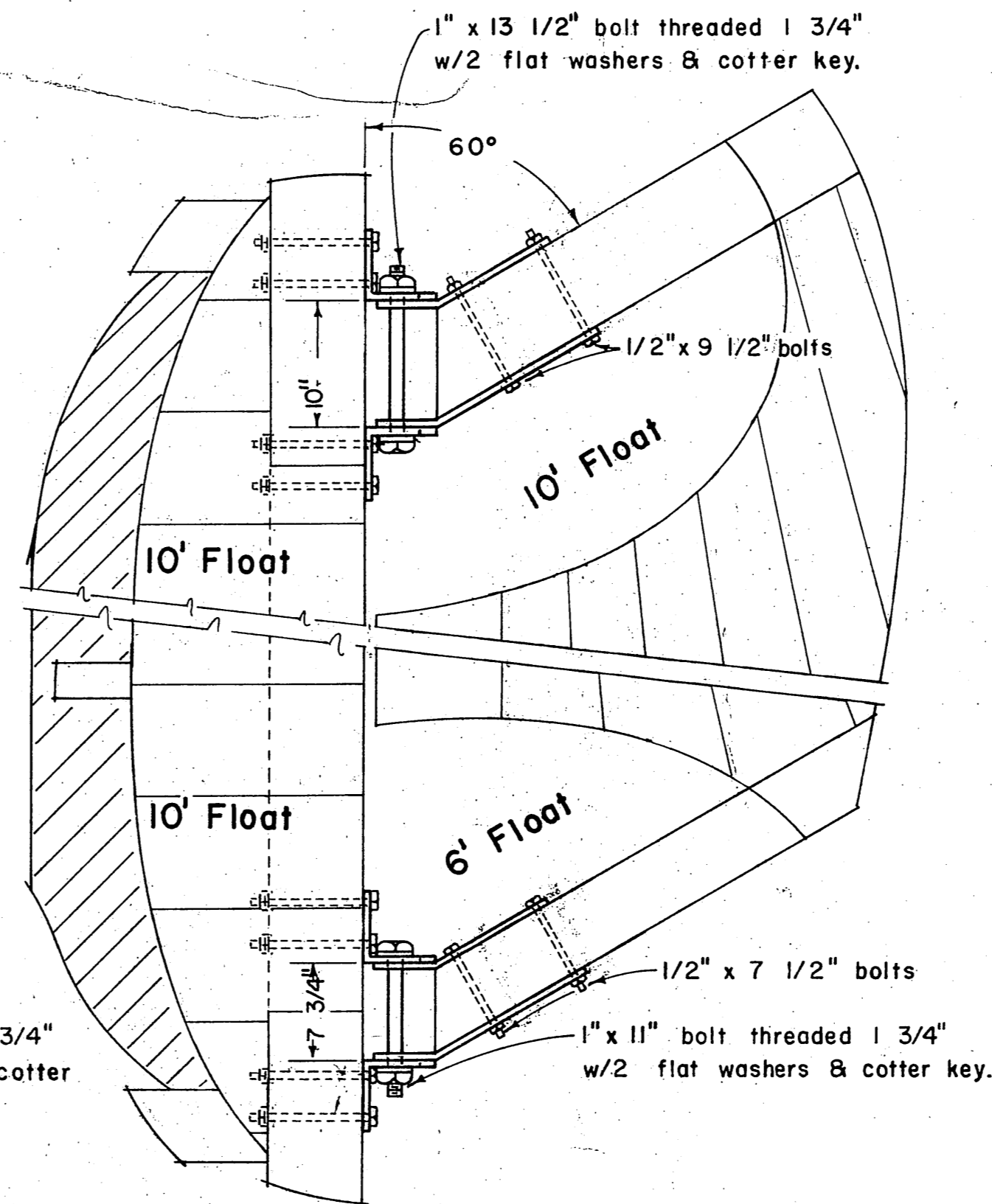
NOTE:
All cotter keys to be 3/16" x 1/4" -
drill holes located 1/2" from end of bolt.



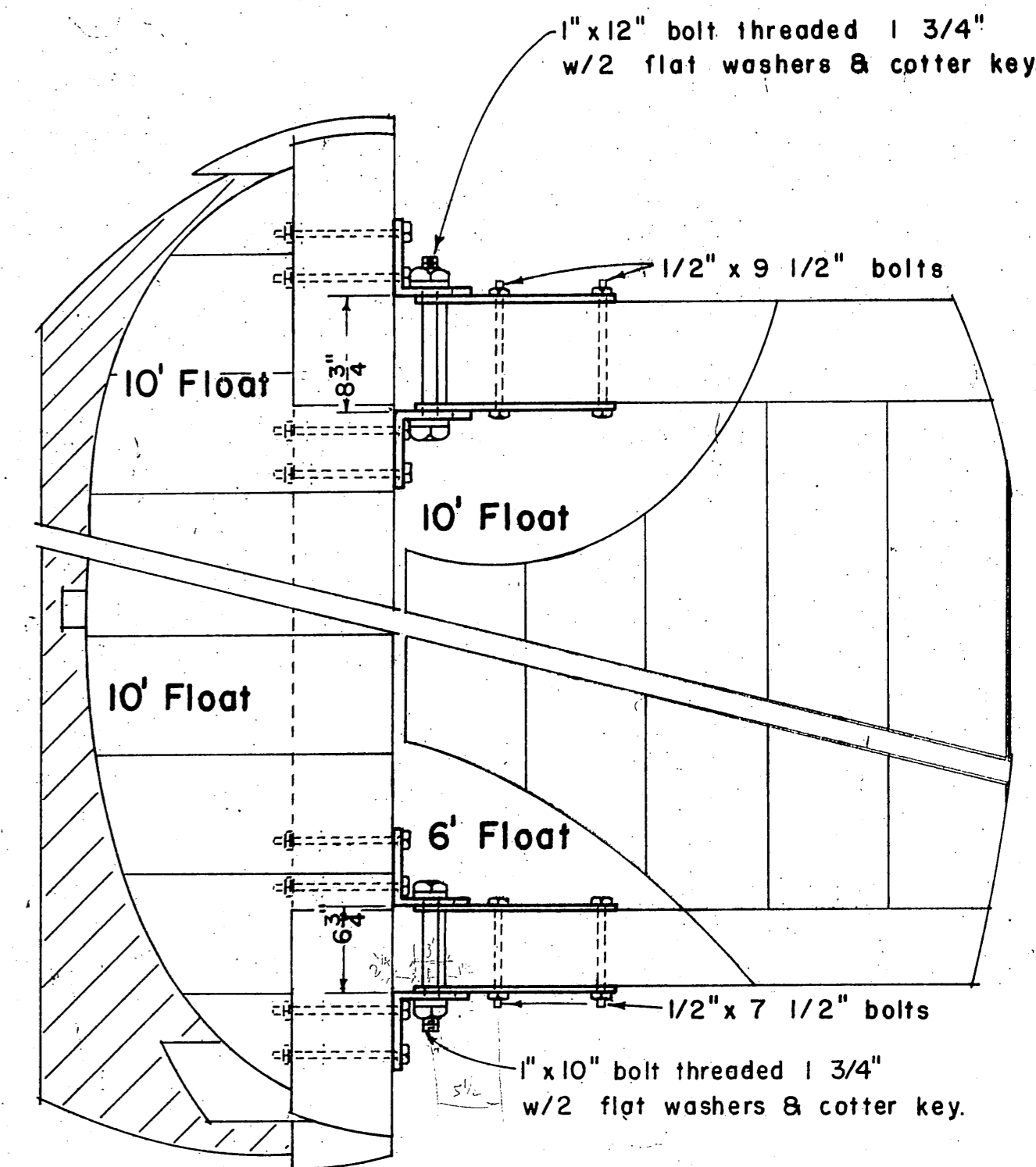
Plan - cutaway view



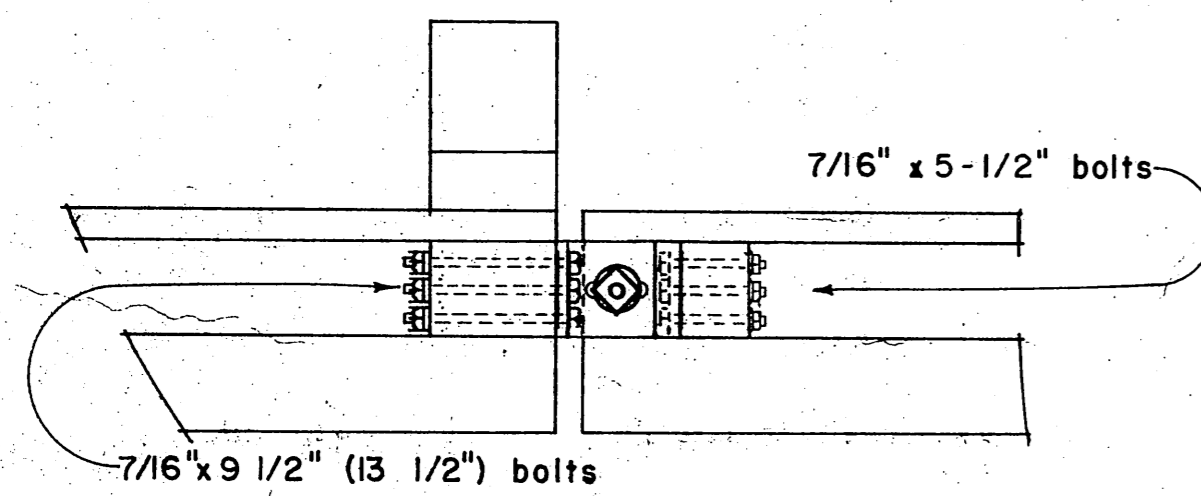
Plan - cutaway view



Plan - cutaway views

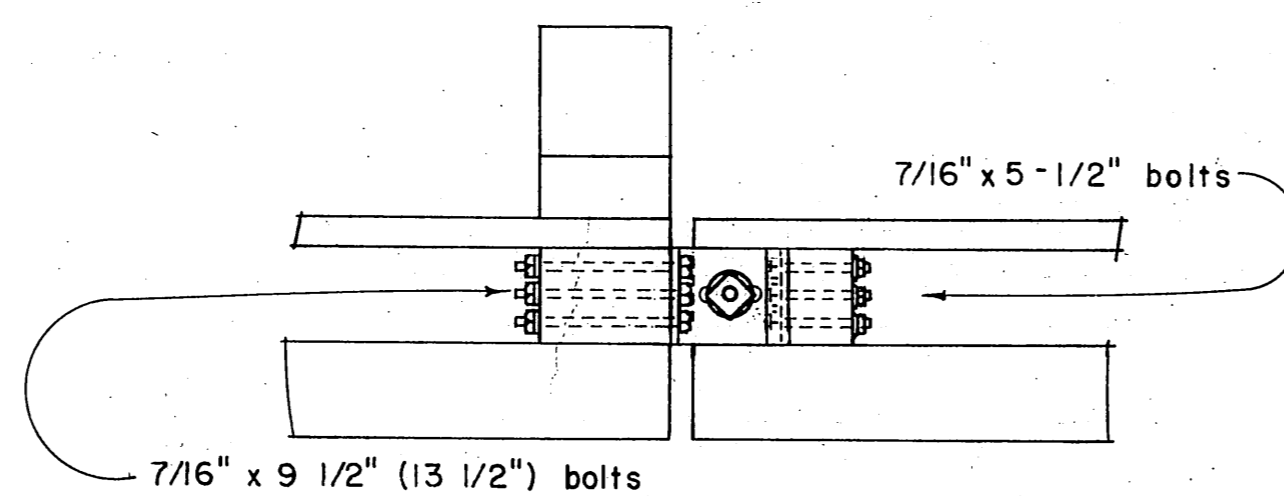


Plan - cutaway views



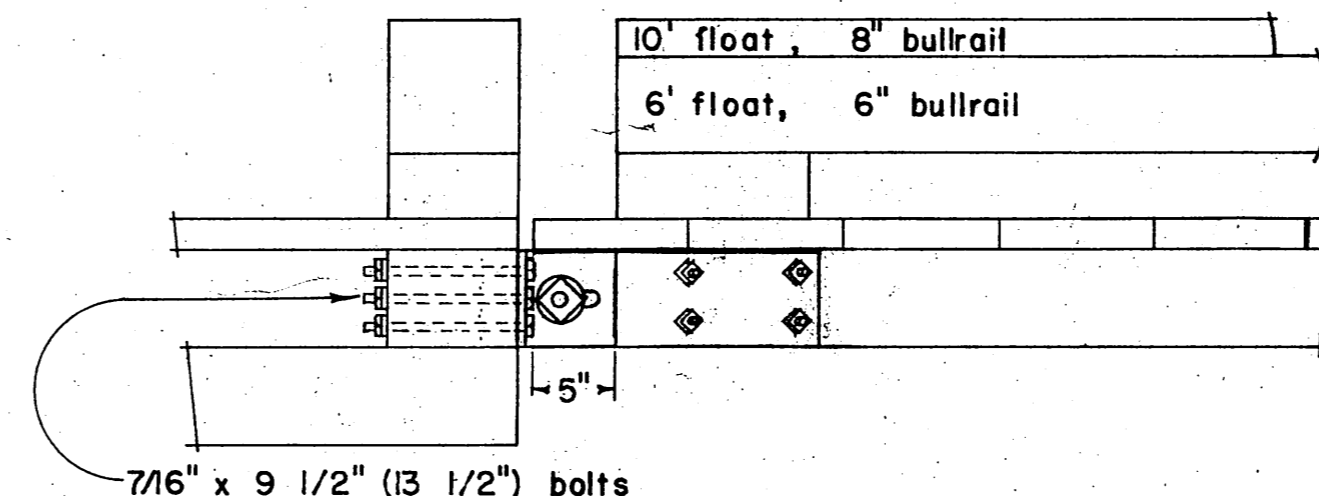
Elevation

4' FLOAT
Right angle connection
Scale 1" to 1'-0"



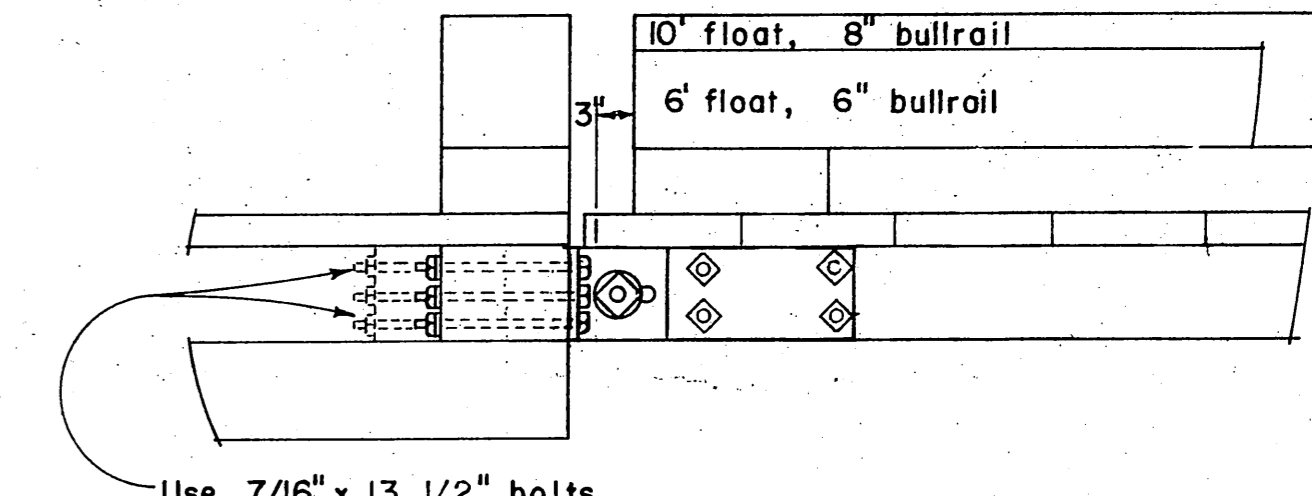
Elevation

4' FLOAT
60° angle connection
Scale 1" to 1'-0"



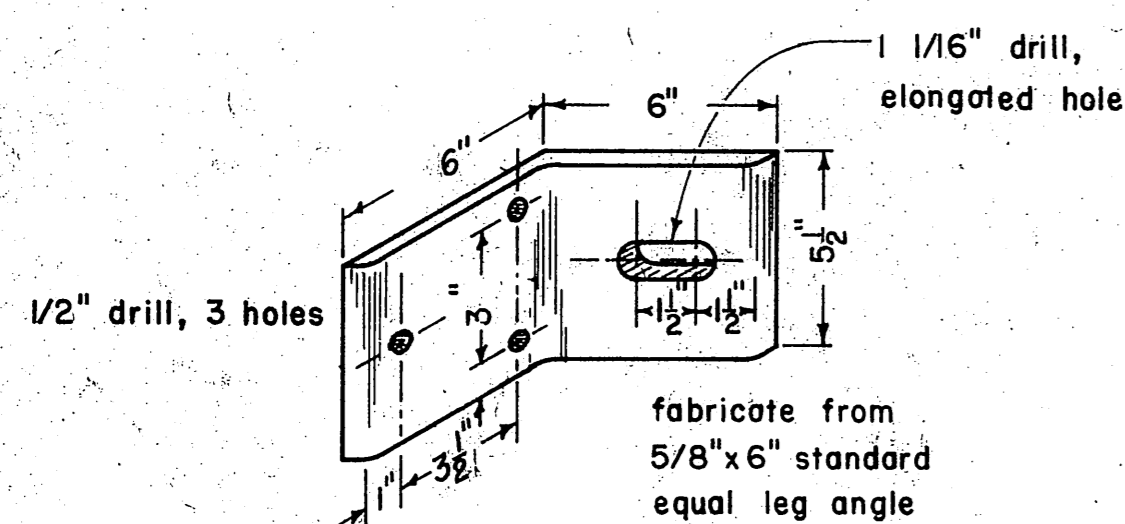
Elevation

6' & 10' FLOATS
60° angle connection
Scale 1" to 1'-0"

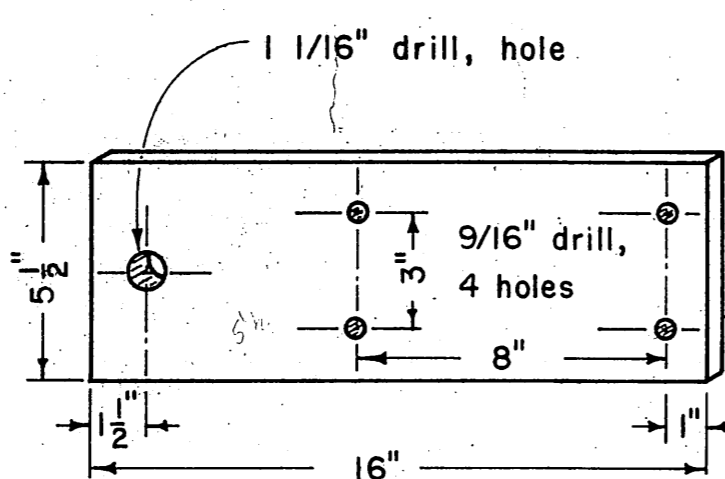


Elevation

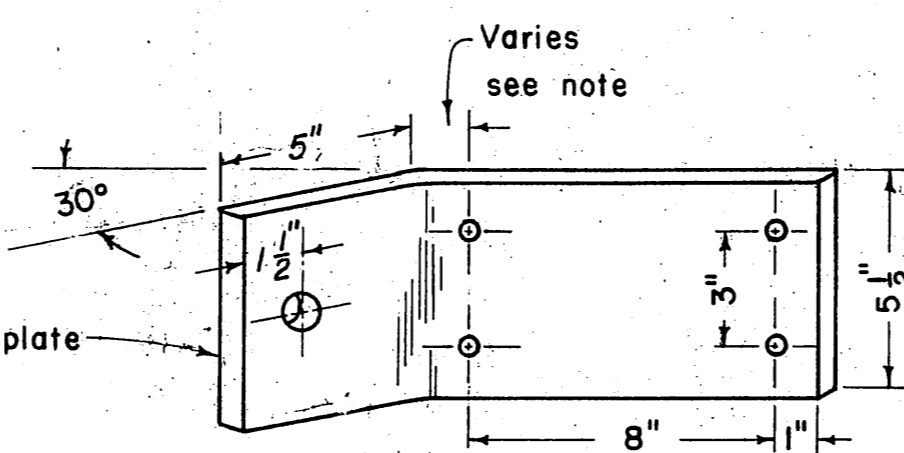
6' & 10' FLOATS
Right angle connections
Scale 1" to 1'-0"



ANGLE CLIP DETAILS



STANDARD PLATE DETAILS
Scale 1" to 5"



BENT PLATE DETAILS

Variable dimension note:
dimension to be -
2" all short side plates, for 16" plate
5 1/2" outside plates 6' angled float, for 19 1/2" plate
6 5/8" outside plates 10' angled float, for 20 5/8" plate

STATE OF ALASKA DEPARTMENT OF PUBLIC WORKS DIVISION OF WATER AND HARBORS	
TYPICAL HINGE CONNECTION DETAILS	
Scale - <i>As shown</i>	Approved - <i>DON STAFFER</i> Director
Date - <i>April 1965</i>	Proj. No. -
Designed by - <i>DS</i>	Drawn by - <i>BS</i> Checked by - <i>DS</i>
SHEET NO. 6 OF 8 SHEETS	