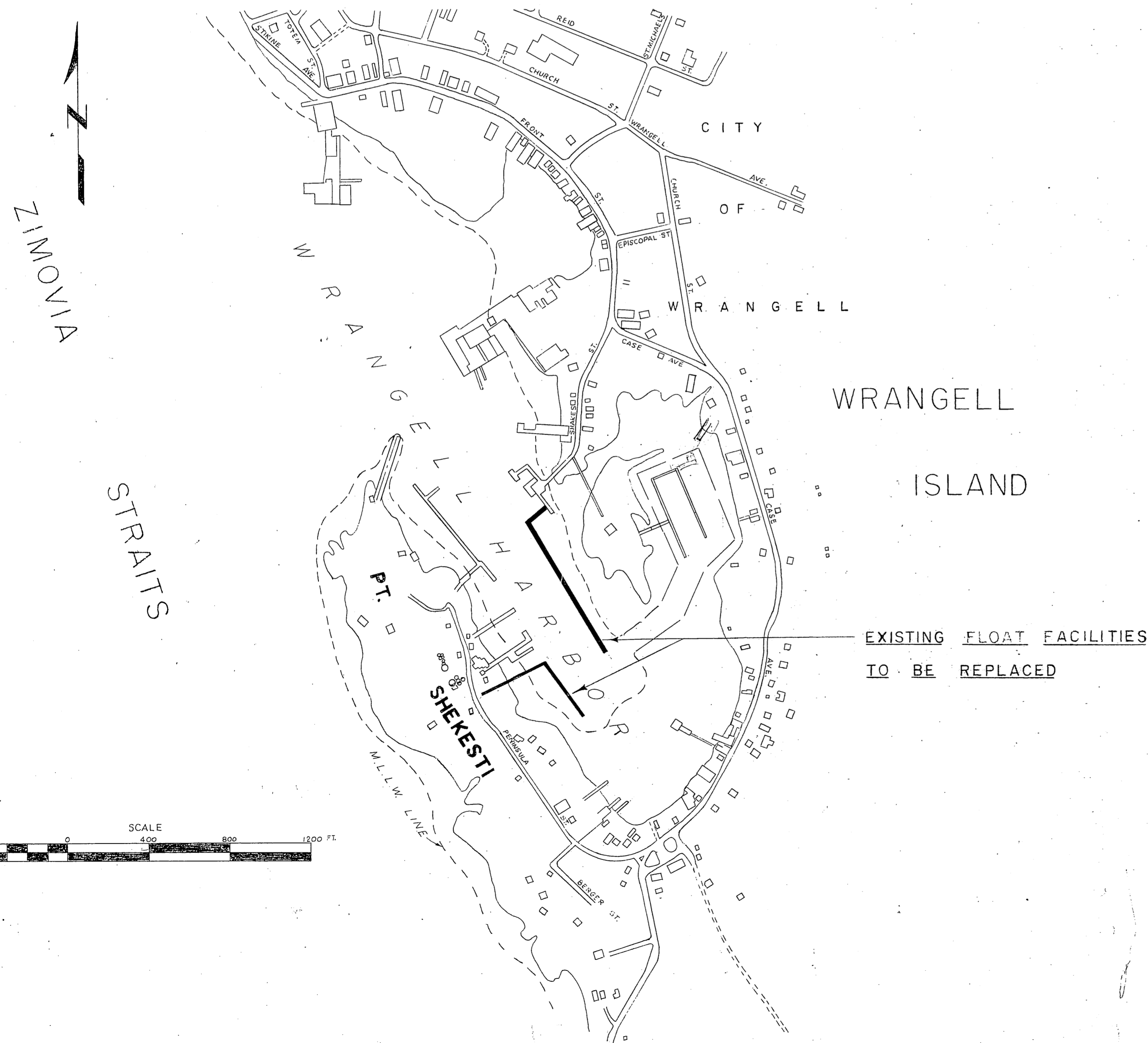
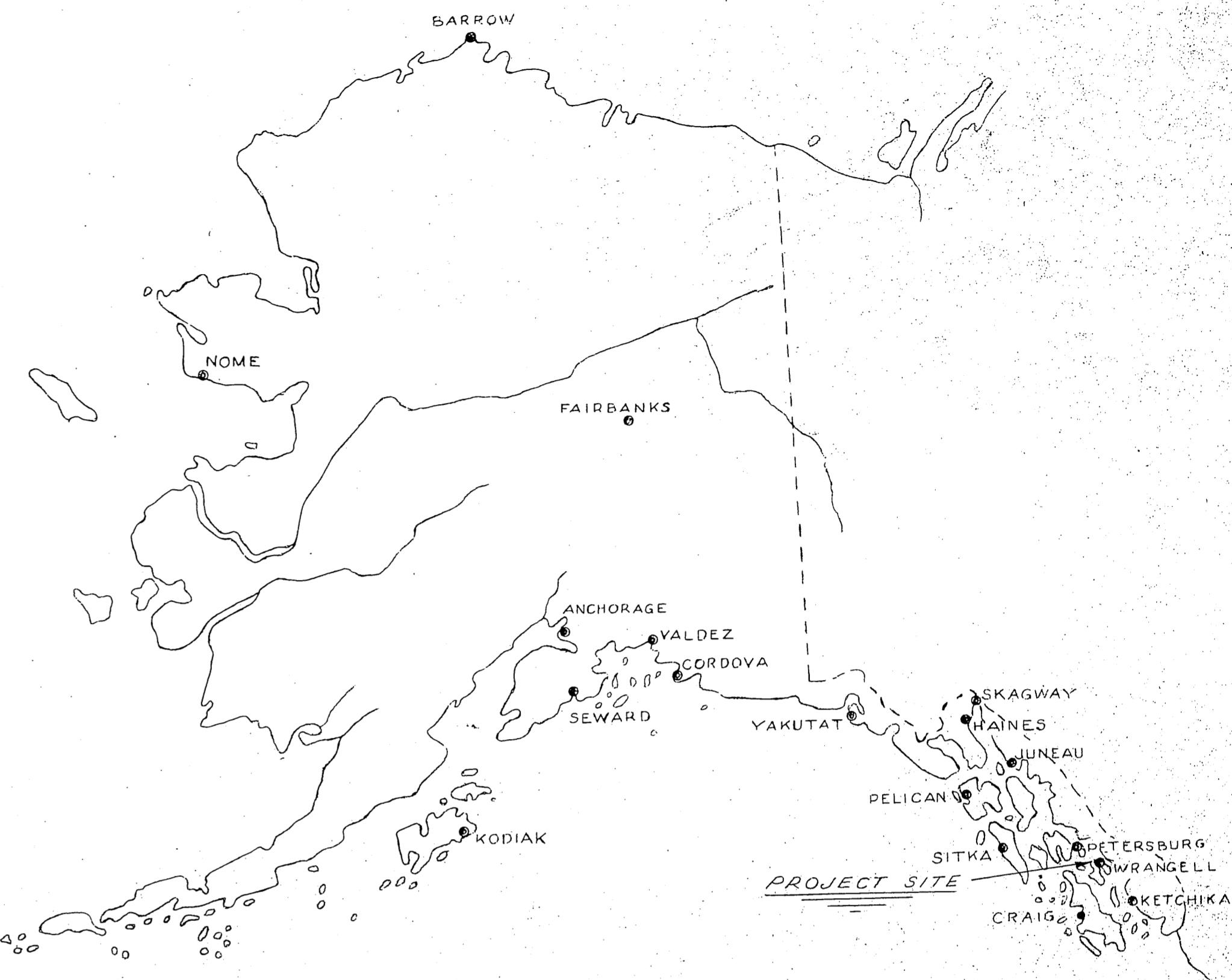


STATE OF ALASKA

DEPARTMENT OF PUBLIC WORKS

DIVISION OF WATER & HARBORS

WRANGELL BOAT HARBOR FACILITIES
PROJECT NO. W-6 3131



WORK SUMMARY

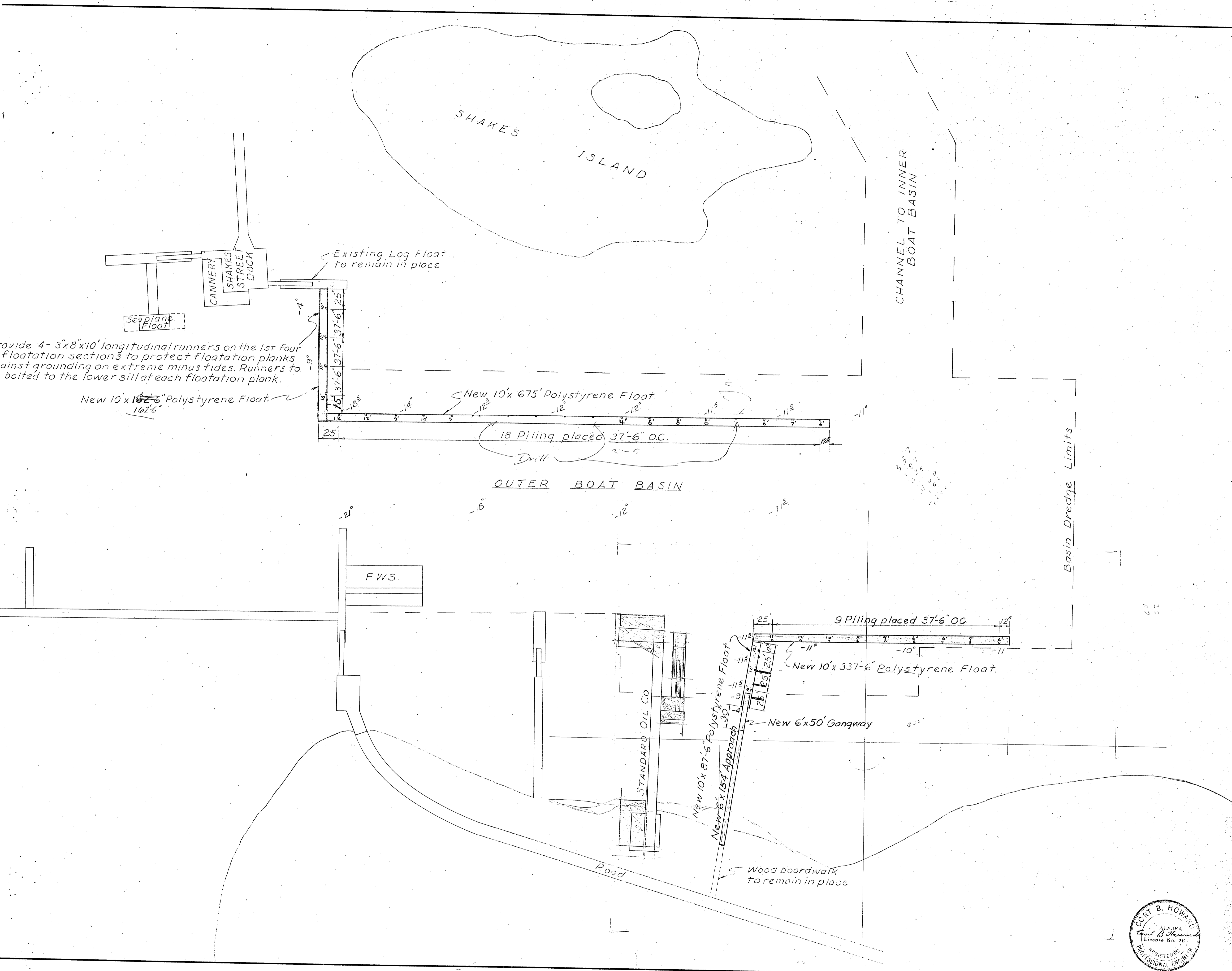
This project includes the removal of the existing approach, gangway & floats & pulling approx. 66 piling, furnishing & driving 1700 L.F. of float piling (34), construction & installation of 924 S.F. of approach structure, a 6'x50' Gangway & 12,625 S.F. of polystyrene float.

INDEX TO SHEETS

LOCATION & TITLE SHEET	SHEET
LOCATION & TITLE SHEET	1
FLOAT LAYOUT	2
APPROACH PROFILE-CONSTR. DETAILS	3
TYPICAL FLOATS	4
TYPICAL GANGWAY	5



DATE July 15, 1962 APPROVED *Jan. B. ...* ACTING COMMISSIONER

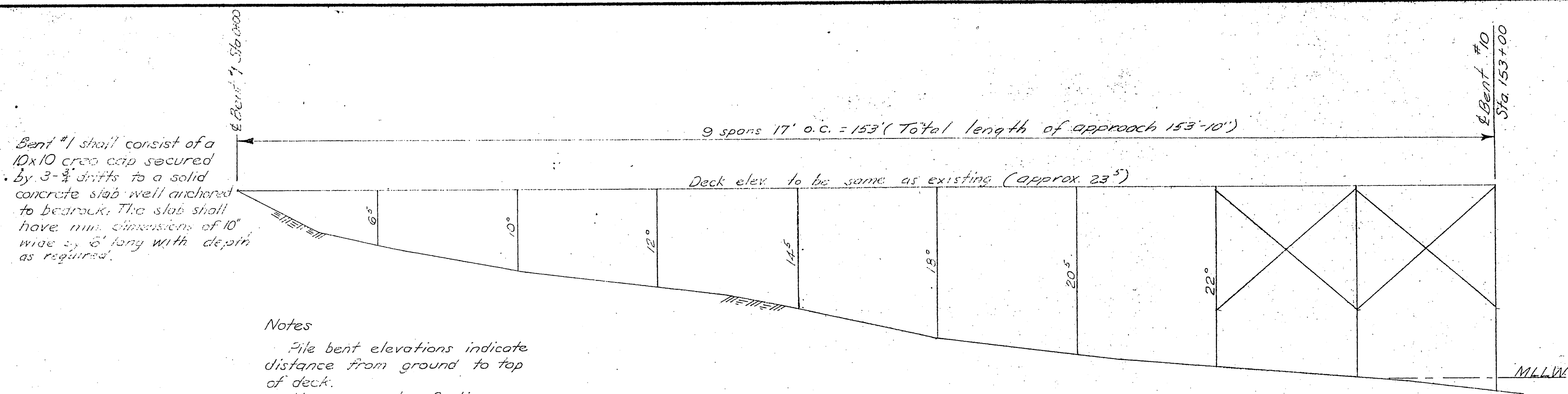


- ### NOTES
1. Existing Log Floats to be removed & disposed of by the contractor. Piling shall be pulled & turned over to the City of Wrangell.
 2. All Float piling to be driven butt down to 10 Ft. penetration or refusal as may be determined by the Project Engineer.
 3. Float piling elevation +28 Ft.
 4. Exact alignment of approach & Floats will be determined by the Project Engineer.

NO.	DATE	REVISION	BY
STATE OF ALASKA DEPARTMENT OF PUBLIC WORKS DIVISION OF WATER AND HARBORS			
WRANGELL BOAT HARBOR FACILITIES FLOAT LAYOUT			
SCALE 1" = 60'		DATE JULY 15, 1962	
PROJ. NO. W-6-3131		APPROVED <i>Don R. Baker</i> Acting COMMISSIONER	
SURVEYED BY <i>D. S. IV</i>		DRAWN BY <i>D. S. IV</i> CHECKED BY <i>D. S. IV</i>	



18
19
9 3
9 4 5



Bent #1 shall consist of a 10x10 creosote secured by 3-3/4 drifts to a solid concrete slab well anchored to bedrock. The slab shall have min. dimensions of 10' wide by 6' long with depth as required.

Notes

Pile bent elevations indicate distance from ground to top of deck.

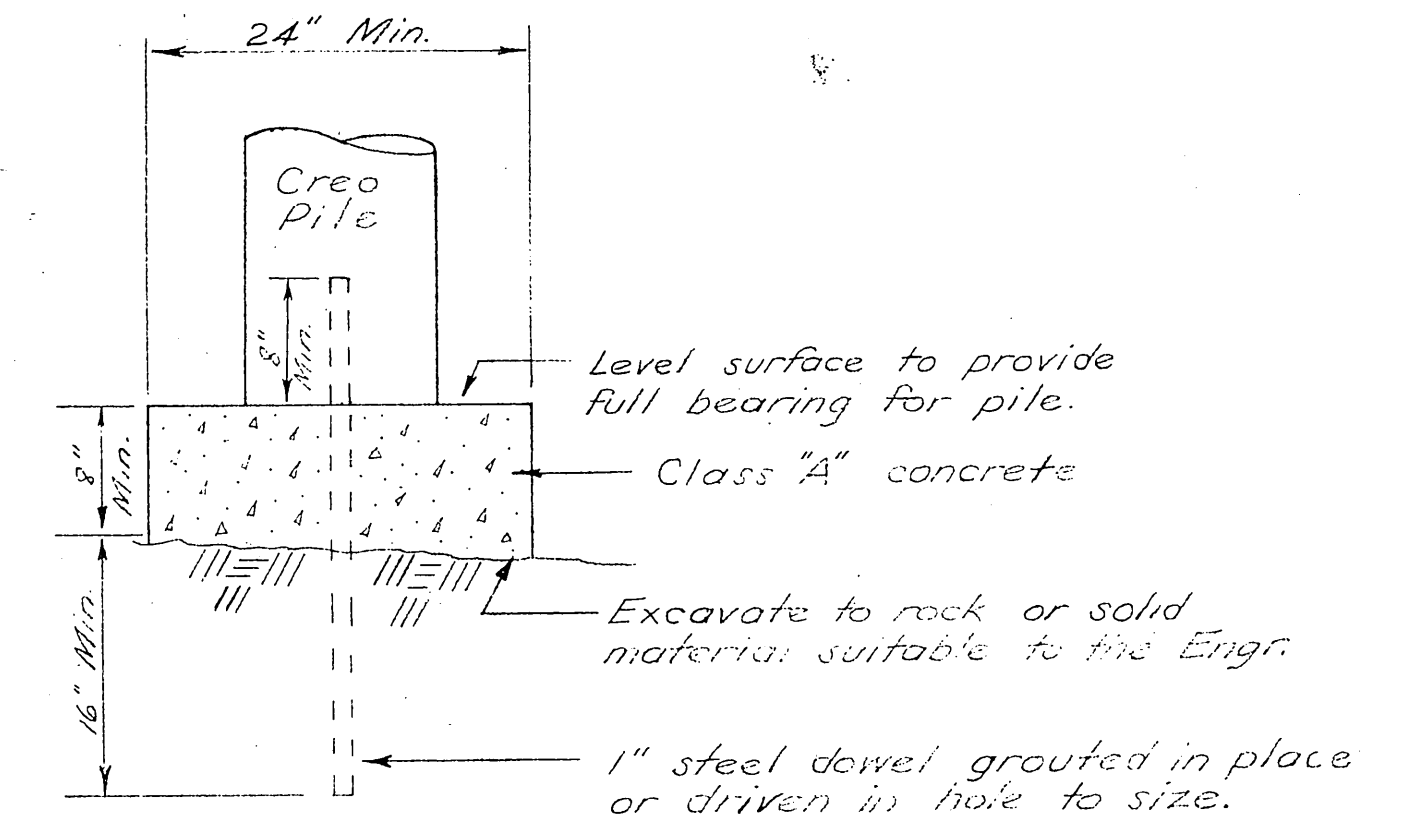
Use concrete footings on bents 1 thru 8. Piling may be driven where overburden exceeds 2ft.

PROFILE

Scale 1" = 10'

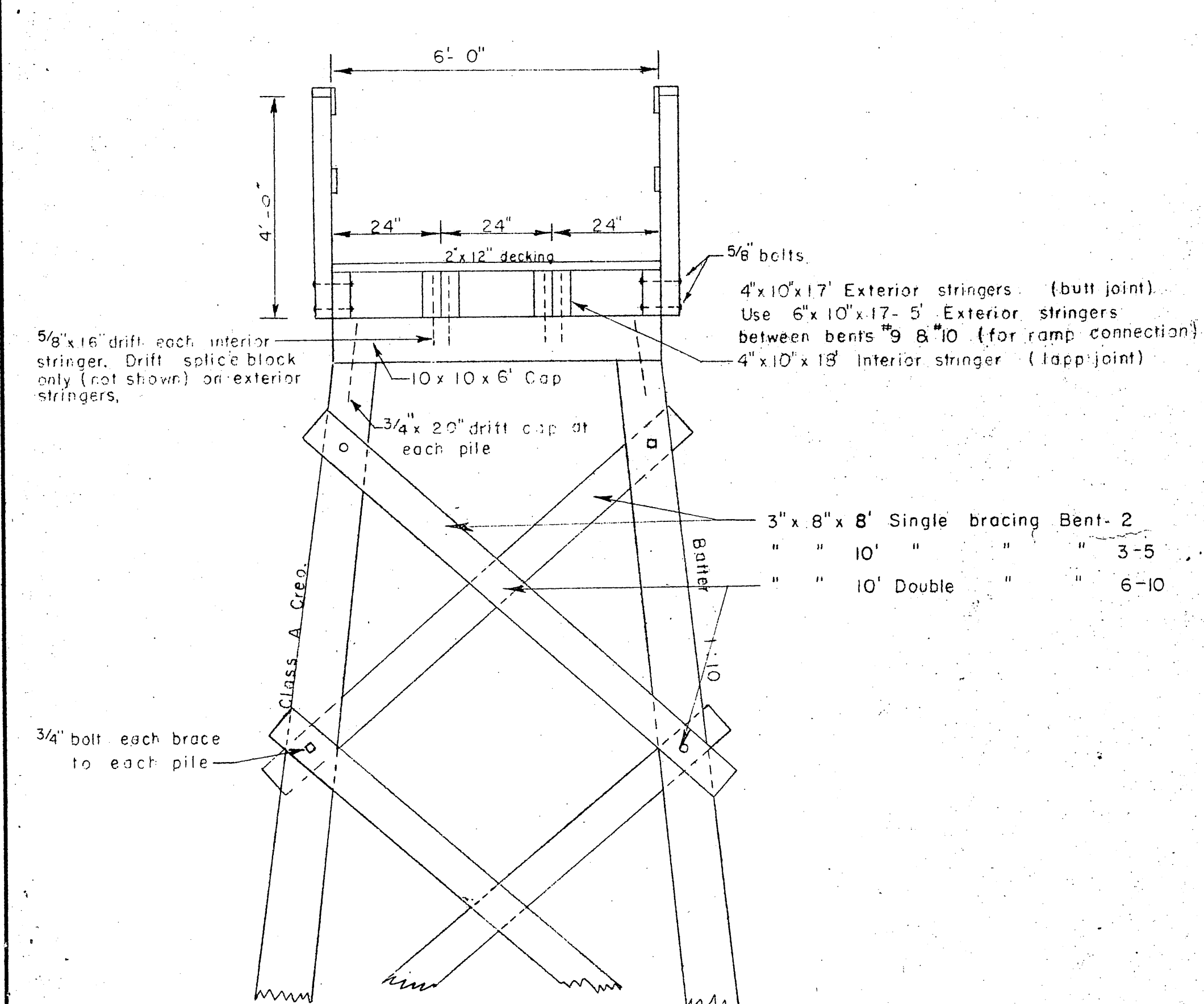
Note

Eight pieces of 3"x8"x24" longitudinal bracing shall be installed between bents 8, 9, & 10. Installation will be similar to X-bracing procedure.



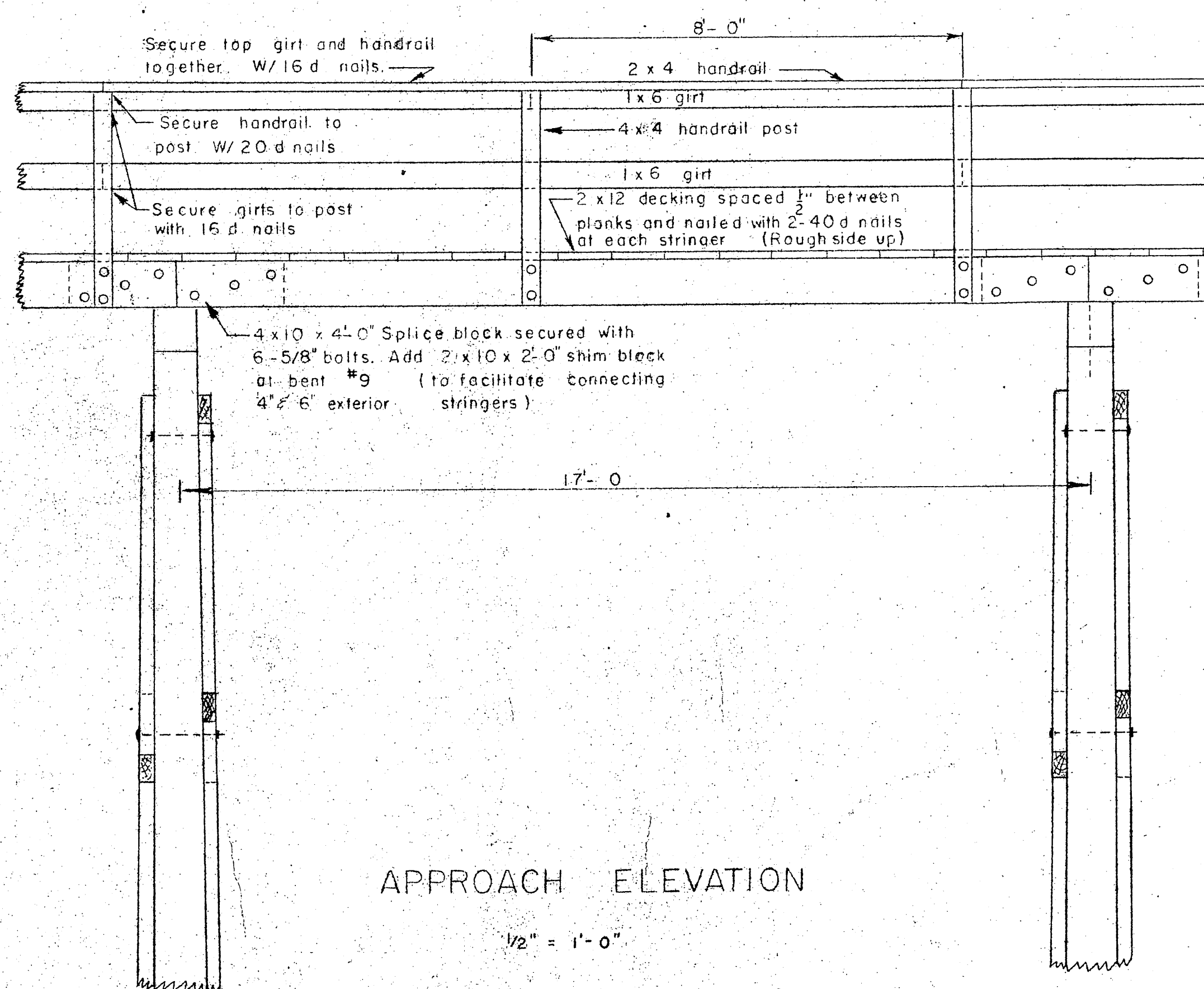
CONCRETE FOOTING DETAIL

Scale 1" = 1'-0"



APPROACH SECTION

1/2" = 1'-0"



APPROACH ELEVATION

1/2" = 1'-0"

MATERIALS				
ITEM	GRADE	DRESSING	TREATMENT	MATERIALS
PILING	CLASS A		12" RET.	DOUGLAS FIR OR
BRACING	CONST.	ROUGH	" "	WESTERN HEMLOCK
CAPS	" "	S4S	10" RET.	
STRINGERS	" "	S4S	" "	
SPLICE BLOCK	" "	" "	" "	
DECKING	" "	S1S	NONE	SITKA
HANDRAIL POST	" "	S4S	" "	SPRUCE
HANDRAILS	" "	" "	" "	
GIRTS	" "	" "	" "	

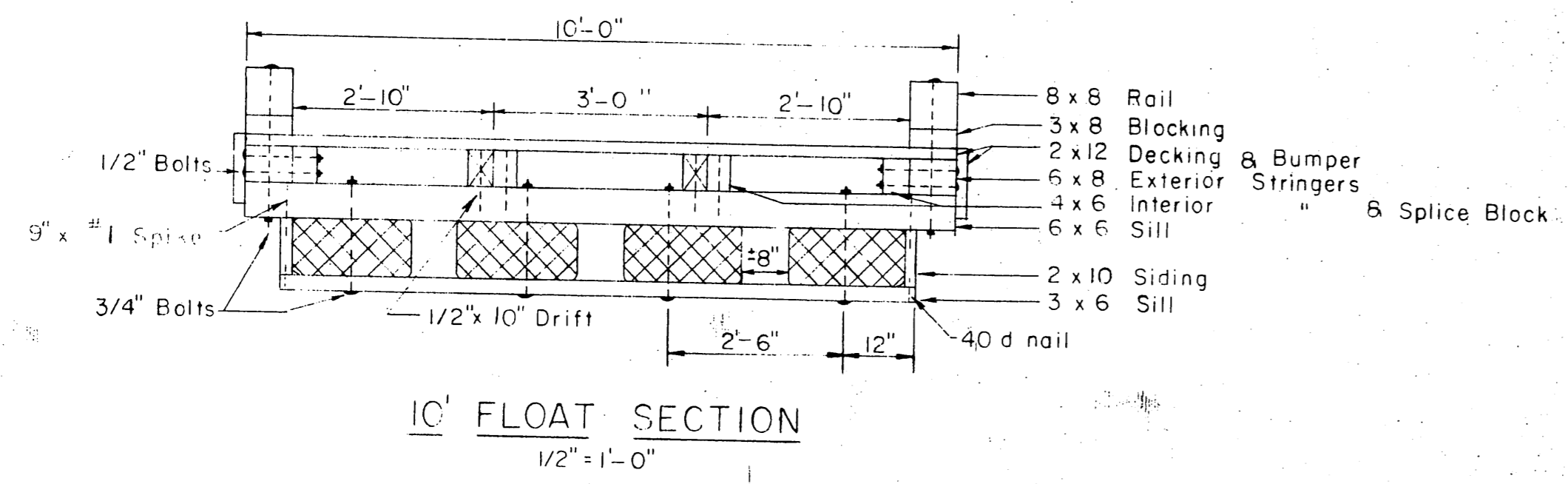
NOTES

All hardware to be galvanized with malleable iron washers between nut and wood surfaces.

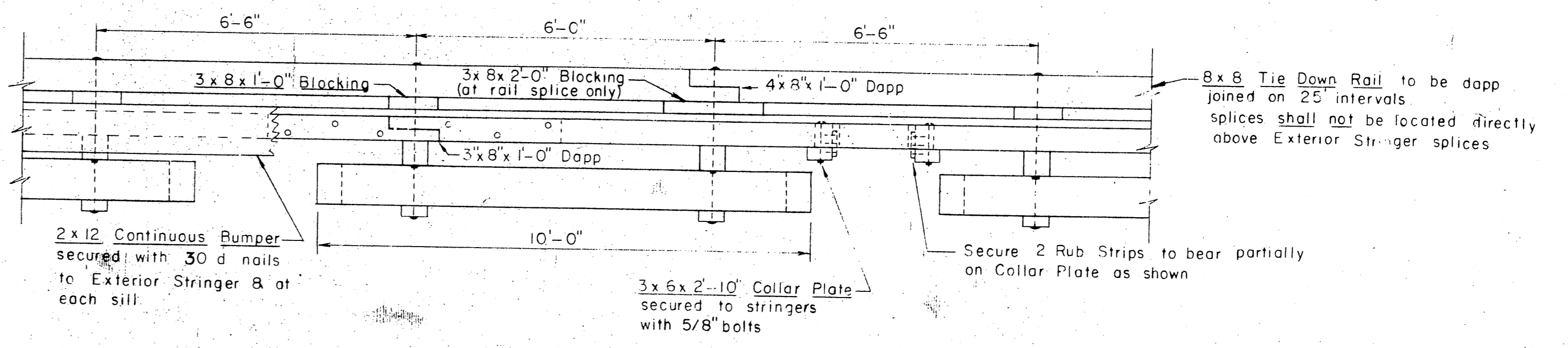
All bolts to be Mushroom Head Type. Bolt holes to be drilled true size. Drift holes to be drilled 1/16" undersize and treated with hot creosote oil. All creosote treated lumber shall be cut to size prior to treatment. All drill holes to be treated with hot creosote oil.

NO.	DATE	REVISION	BY
STATE OF ALASKA DEPARTMENT OF PUBLIC WORKS DIVISION OF WATER AND HARBORS			
WRANGELL BOAT HARBOR FACILITIES Approach Profile and Construction Details			
SCALE	As shown	APPROVED	Don Doble ACTING COMMISSIONER
DATE	July 15, 1962		
PROJ. NO.	W-63131		
SURVEYED BY	DS	DRAWN BY	DW
		CHECKED BY	DS

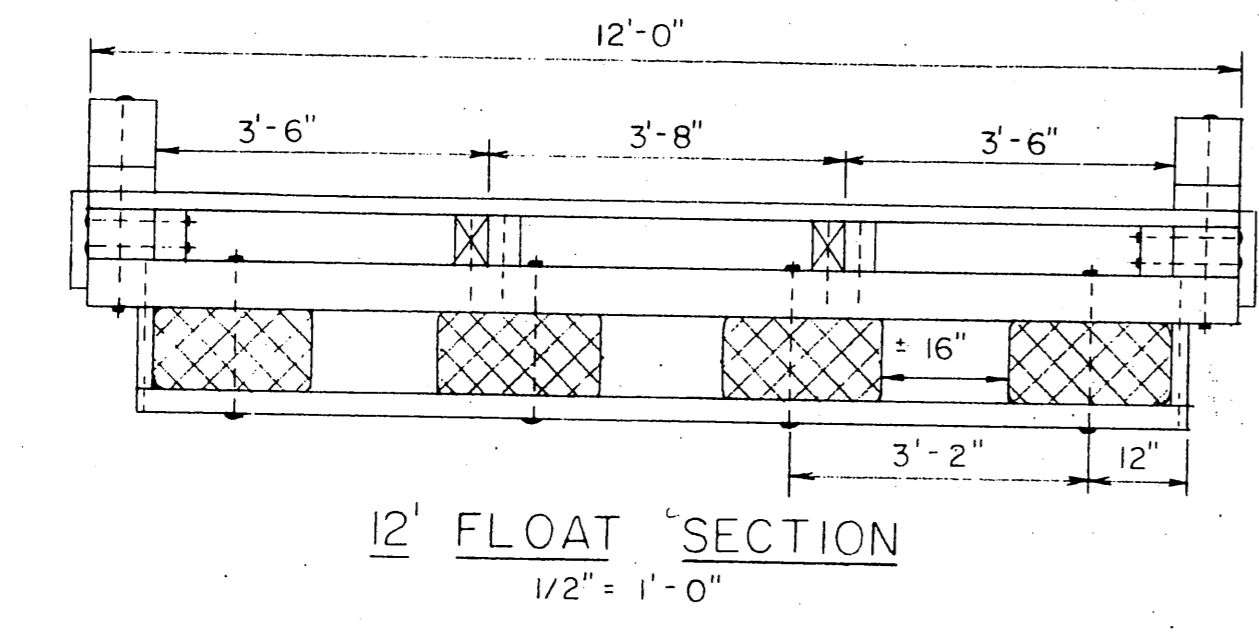




10' FLOAT SECTION
1/2" = 1'-0"

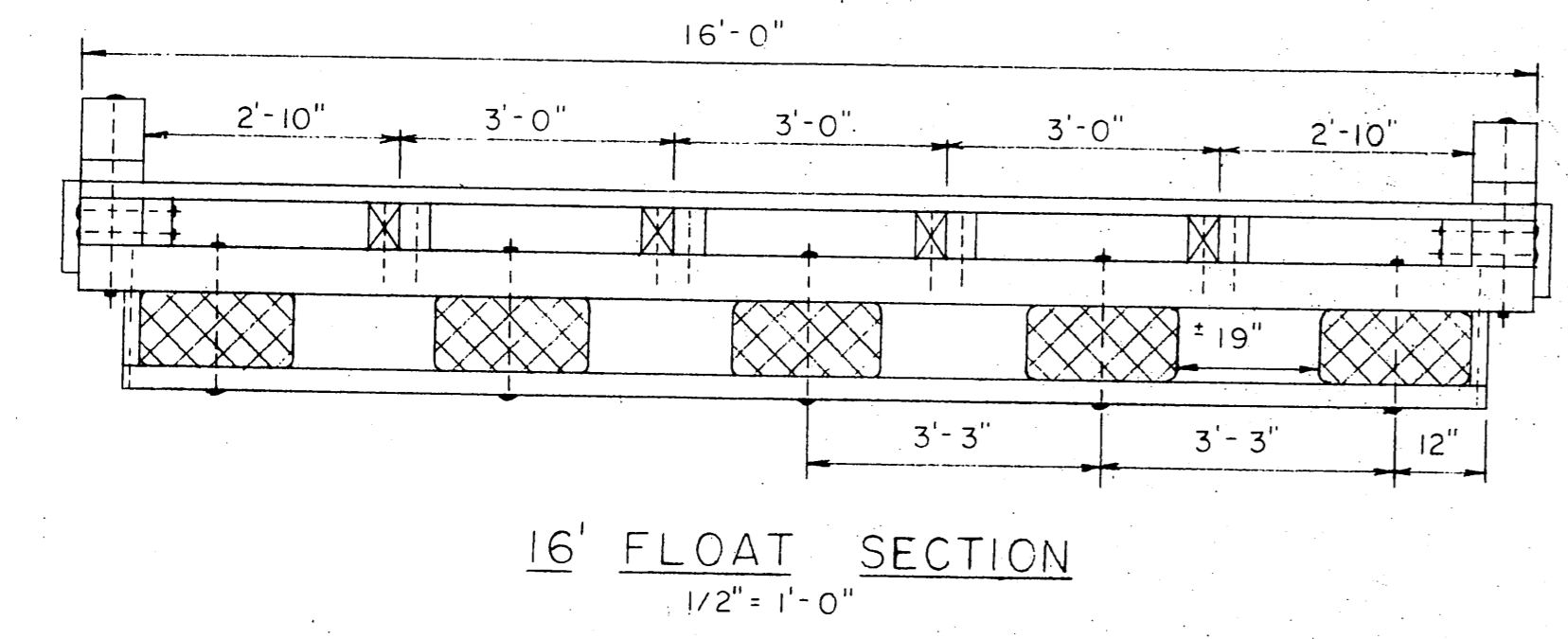


ELEVATION
1/2" = 1'-0"

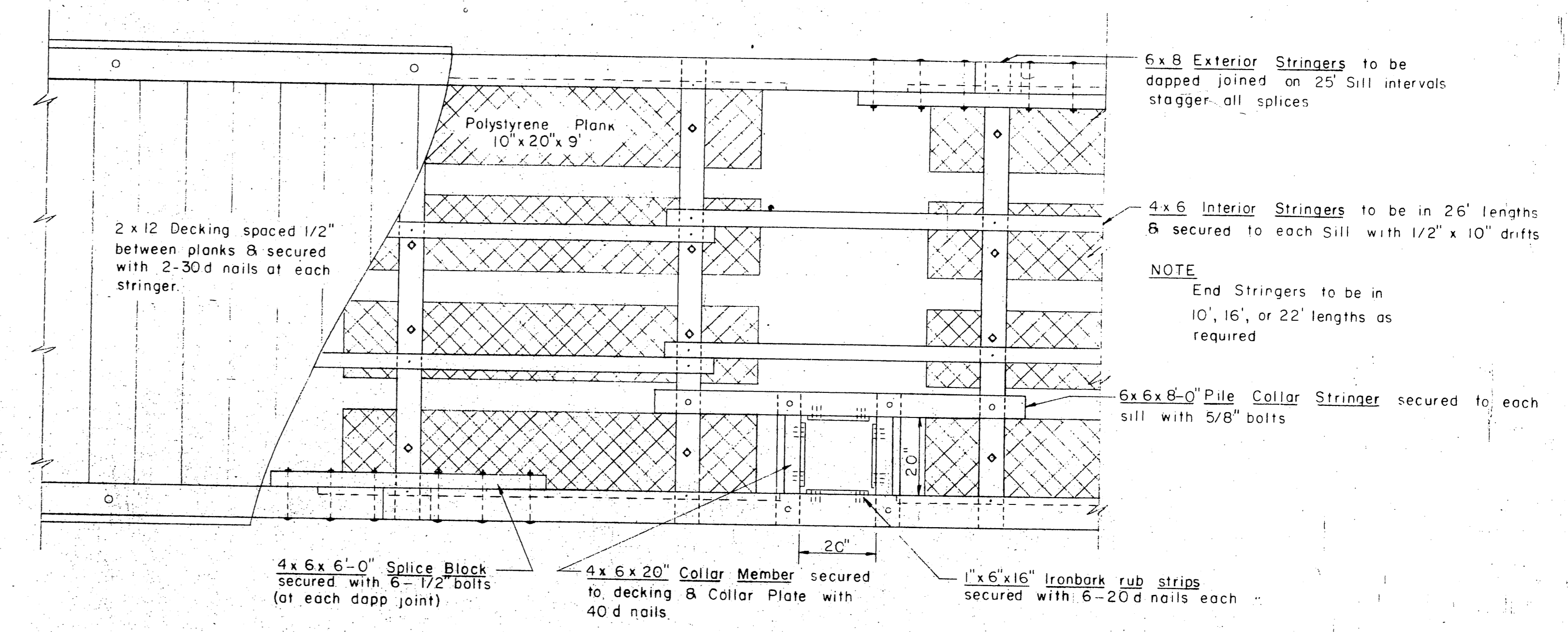


12' FLOAT SECTION
1/2" = 1'-0"

NOTE
12' & 16' Float construction shall conform to 10' Float construction except as noted.

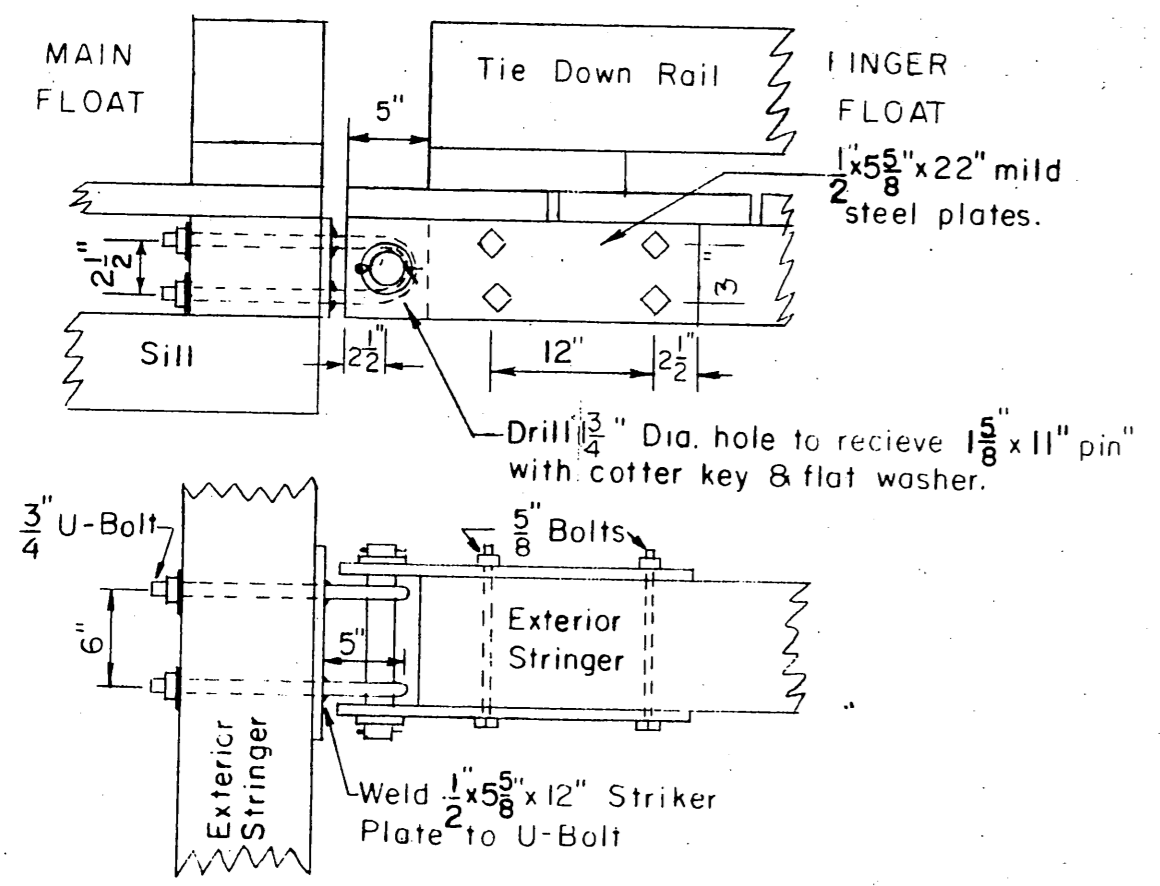


16' FLOAT SECTION
1/2" = 1'-0"

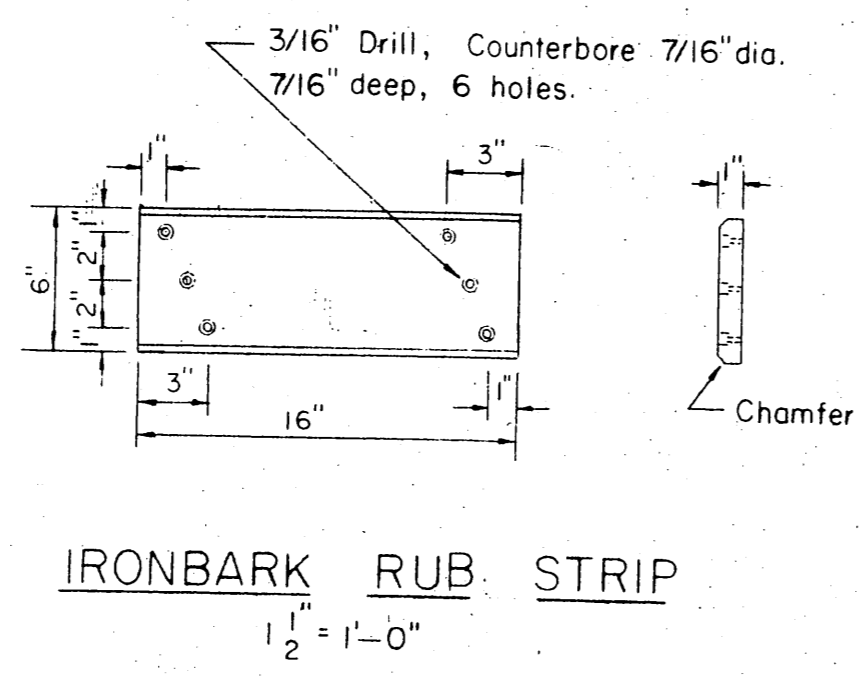


PLAN VIEW 10' FLOAT
1/2" = 1'-0"

NOTES
All hardware to be hot dip galvanized. A malleable iron washer shall be placed between all nut & wood surfaces. All bolts to be of the mushroom head type. Bolt holes to be drilled true size. Drift holes to be drilled 1/16" undersize. All drill holes shall be treated with hot creosote oil. All pressure treated creosote material shall be cut to size prior to treatment. Tie Down Rail & Blocking contact surfaces shall be treated with asphaltic roofing compound. An additional Polystyrene Plank shall be incorporated into each of the nearest 3 float sections wherever gangway rests on float. A 2x10 End Plate shall be securely nailed to float Siding members on all exposed float ends. Tie Down Rail shall be extended across all float ends. Flotation Plank bolt holes in all Sills & splice holes in all Exterior Stringers to be drilled prior to treatment. An additional half flotation plank (10'x10'x9') shall be added to the last flotation section on all float ends.



CONNECTION DETAIL
1" = 1'-0"



IRONBARK RUB STRIP
1/2" = 1'-0"

ITEM	GRADE	DRESSING	CREOSOTE TREAT.
3x6 Sill	Construction	Rough	12 Lbs Ret.
2x10 Siding	"	"	" " "
6x6 Sill	"	"	" " "
4x6 Interior Stringers	"	S2 E	" " "
6x8 Exterior	"	S4 S	" " "
4x6 Splice Block	"	S2 E	" " "
2x10 End Plate	"	Rough	" " "
2x12 Bumper	Construction	S1 S	None
2x12 Decking	"	"	"
3x8 Blocking	"	S4 S	"
8x8 Rail	"	"	"

All piling will be Class A, creosoted to 12" retention
* May be resawn to standard dressed dimensions



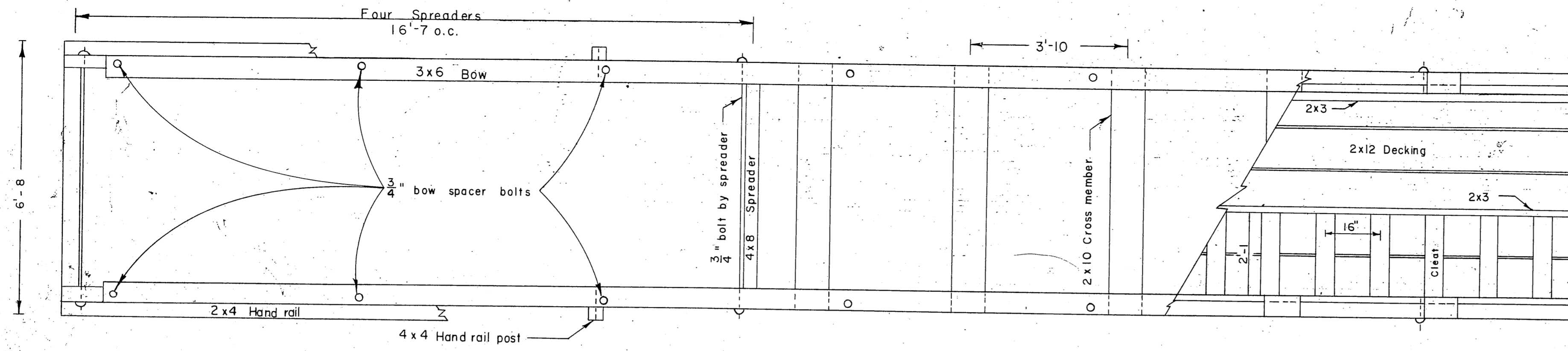
STATE OF ALASKA
DEPARTMENT OF PUBLIC WORKS
DIVISION OF WATER AND HARBORS

TYPICAL FLOATS

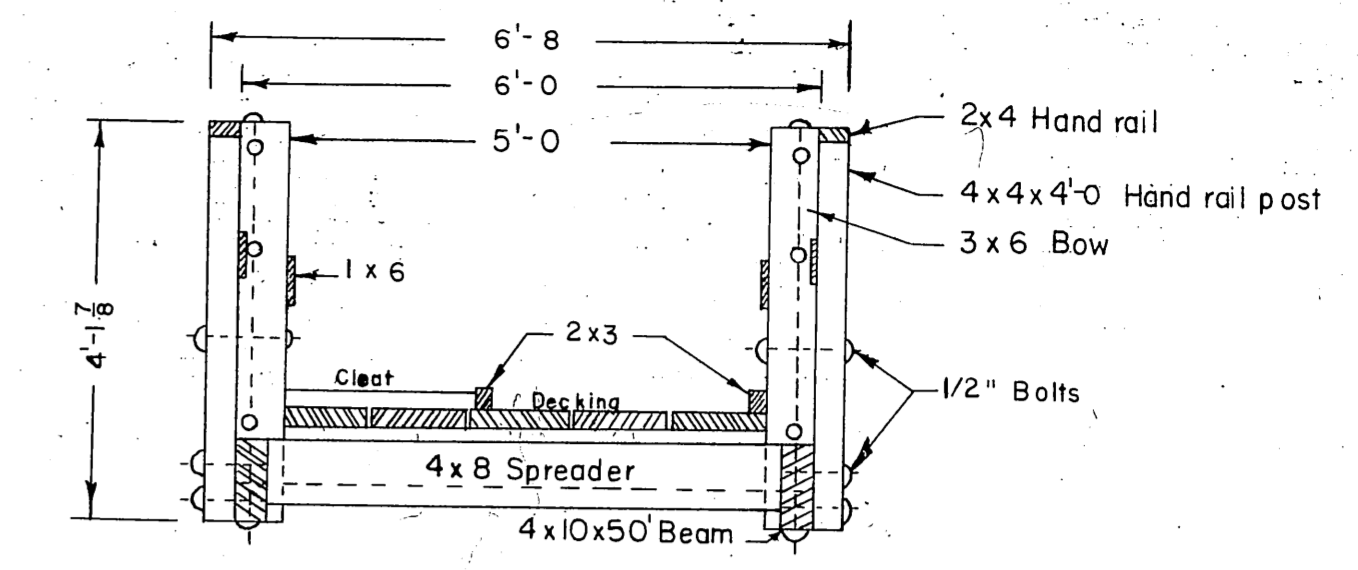
SCALE As Shown
DATE June 1962
PROJ. NO. _____
SURVEYED BY _____
DRAWN BY DS
CHECKED BY DK

APPROVED *[Signature]*
COMMISSIONER

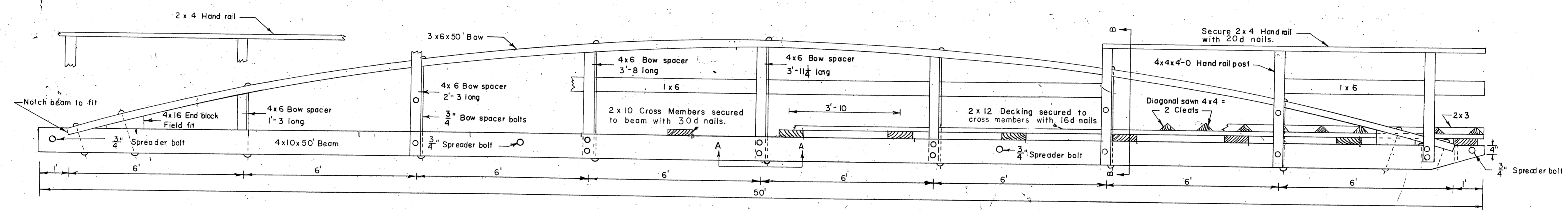
SHEET 4 OF 4 SHEETS



PLAN
1/2" = 1'



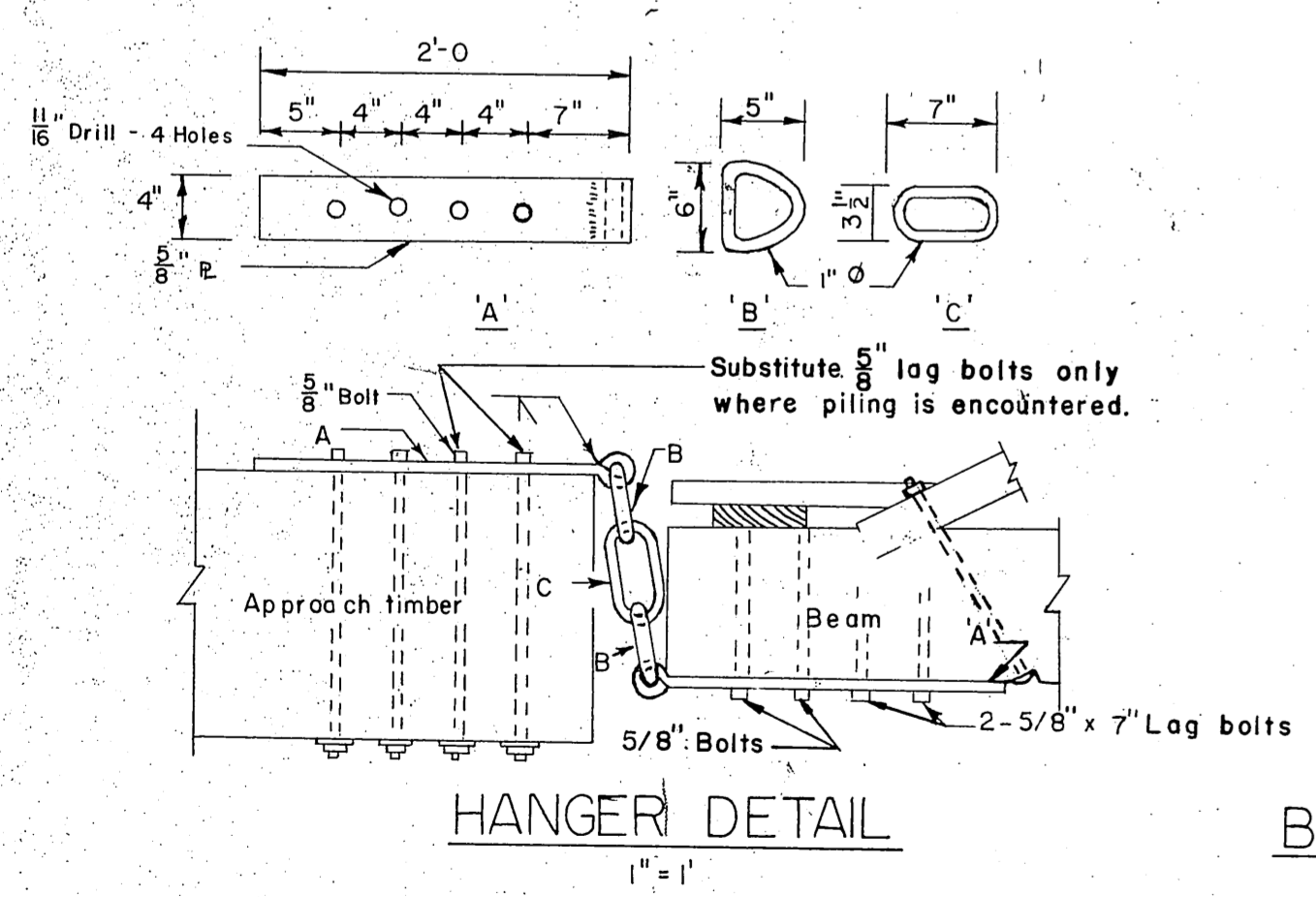
SECTION B-B
1/2" = 1'



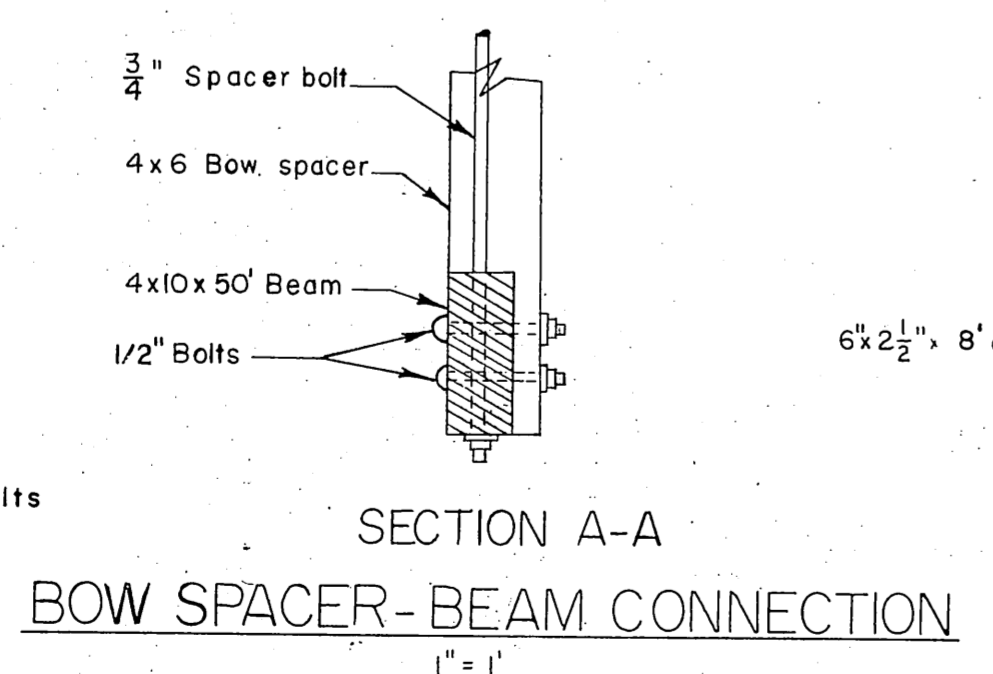
SIDE ELEVATION
1/2" = 1'

NOTE
Section A-A applies only to the 3 center Bow Spacers.
Remaining 4 Bow Spacers are flush with top of beam.
Bow Spacer heights are centerline measurement.

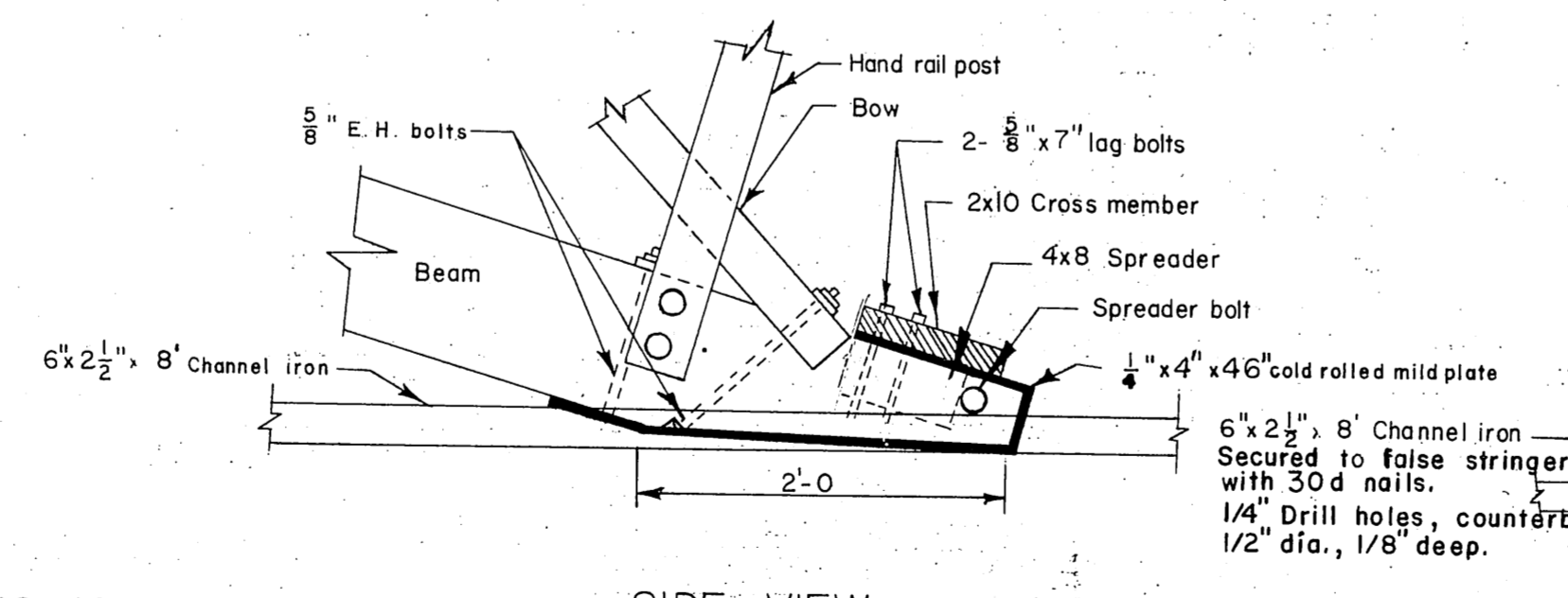
MATERIALS				
ITEM	GRADE	DRESSING	TREATMENT	MATERIALS
4x10 Beams	Select Struct.	Rough	Creo 10# ret.	Douglas Fir or Western Hemlock
3x6 Bow	"	S4S	Wolman Salt .5#cf.	"
4x6 "Spacer	Construction	"	"	"
2x10 Cross Member	"	Rough	"	"
4x8 Spreader	"	Rough	"	"
2x12 Decking	"	S1S2E	"	"
4x4 Cleats	"	Rough	"	"
2x3 Runners	"	"	"	"
2x4 Handrail	"	S4S	"	"
4x4 Posts	"	"	"	"
1x6 Girts	"	"	"	"



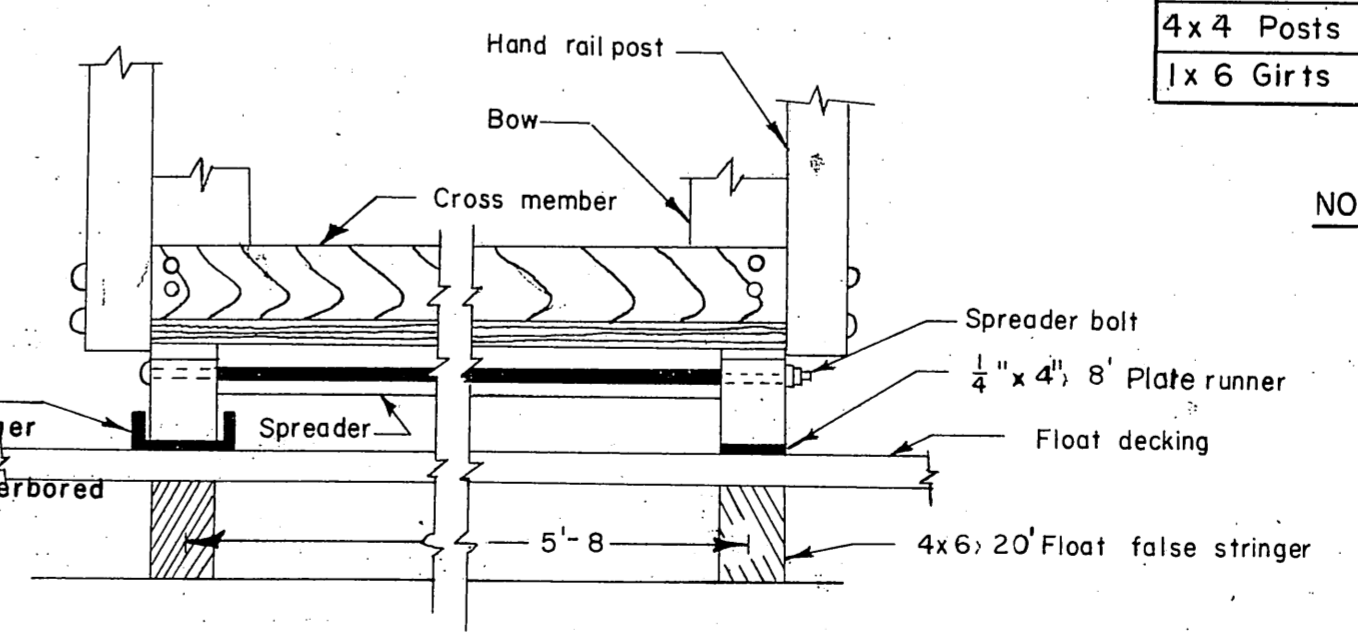
HANGER DETAIL
1" = 1'



SECTION A-A
BOW SPACER-BEAM CONNECTION
1" = 1'



SIDE VIEW



END VIEW

GANGWAY - FLOAT CONNECTION
1" = 1'

NOTES
All material shall be cut to size prior to treatment.
All hardware to be hot dipped galvanized.
All bolts to be of the mushroom headed type.
A malleable iron washer to be placed between nut & wood surfaces.
Lag bolts to be gimlet pointed.
All cuts & notches shall be treated with asphaltic roofing compound.



NO DATE	REVISION	BY
ALASKA DEPARTMENT OF PUBLIC WORKS		
DETAIL FLOAT GANGWAY		
SCALE As Shown	APPROVED R.A. Downing	COMMISSIONER
DATE July 21, 1960	DRAWN BY MGR	CHECKED BY RPH
FILE NO.		
SURVEYED BY		