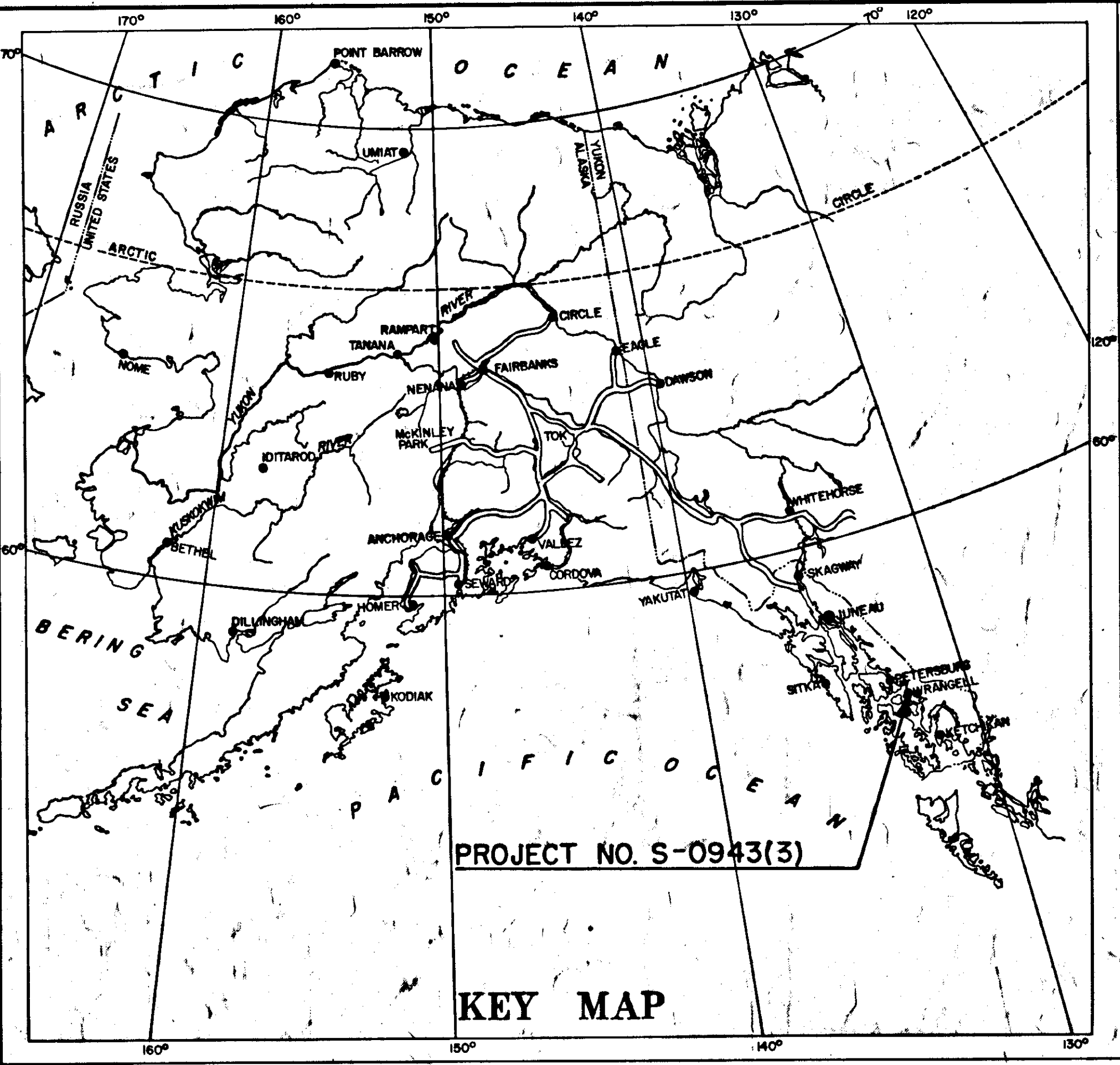


STATE	PROJECT DESIGNATION	YEAR	SHEET NO.	TOTAL SHEETS
ALASKA	S-0943(3)	1961	1	18



STATE OF ALASKA
DEPARTMENT OF PUBLIC WORKS
DIVISION OF HIGHWAYS

PLAN AND PROFILE
PROPOSED HIGHWAY PROJECT

NO. S-0943(3)
CITY THRU ROUTE
WRANGELL, ALASKA
GRADING & DRAINAGE
"AS BUILT"

INDEX OF SHEETS

SHEET NO.	DESCRIPTION
1	TITLE SHEET
2	TYPICAL SECTION & ESTIMATE OF QUANTITIES
3-6	PLAN & PROFILE
7 & 8	CULVERTS & MISCELLANEOUS WORK
9	BORROW PIT PLAT
10	SKETCH OF WASTE DISPOSAL AREA
11	SUMMARY OF MON. & MON. CASES
12	SUMMARY OF STANDARD SIGNS
S-1	STANDARD CULVERTS
S-2	STANDARD END SECTIONS
S-3	STANDARD APPROACHES
S-5	STANDARD BARRICADE
S-6	STANDARD PROJECT IDENTIFICATION SIGN
S-7	TYPICAL SIGNS

Detail cross sections for this project are available for inspection in the Headquarters office at Juneau.

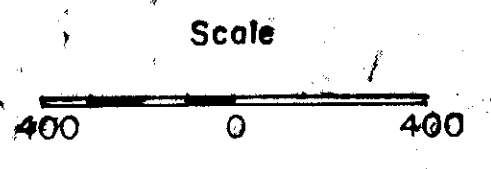
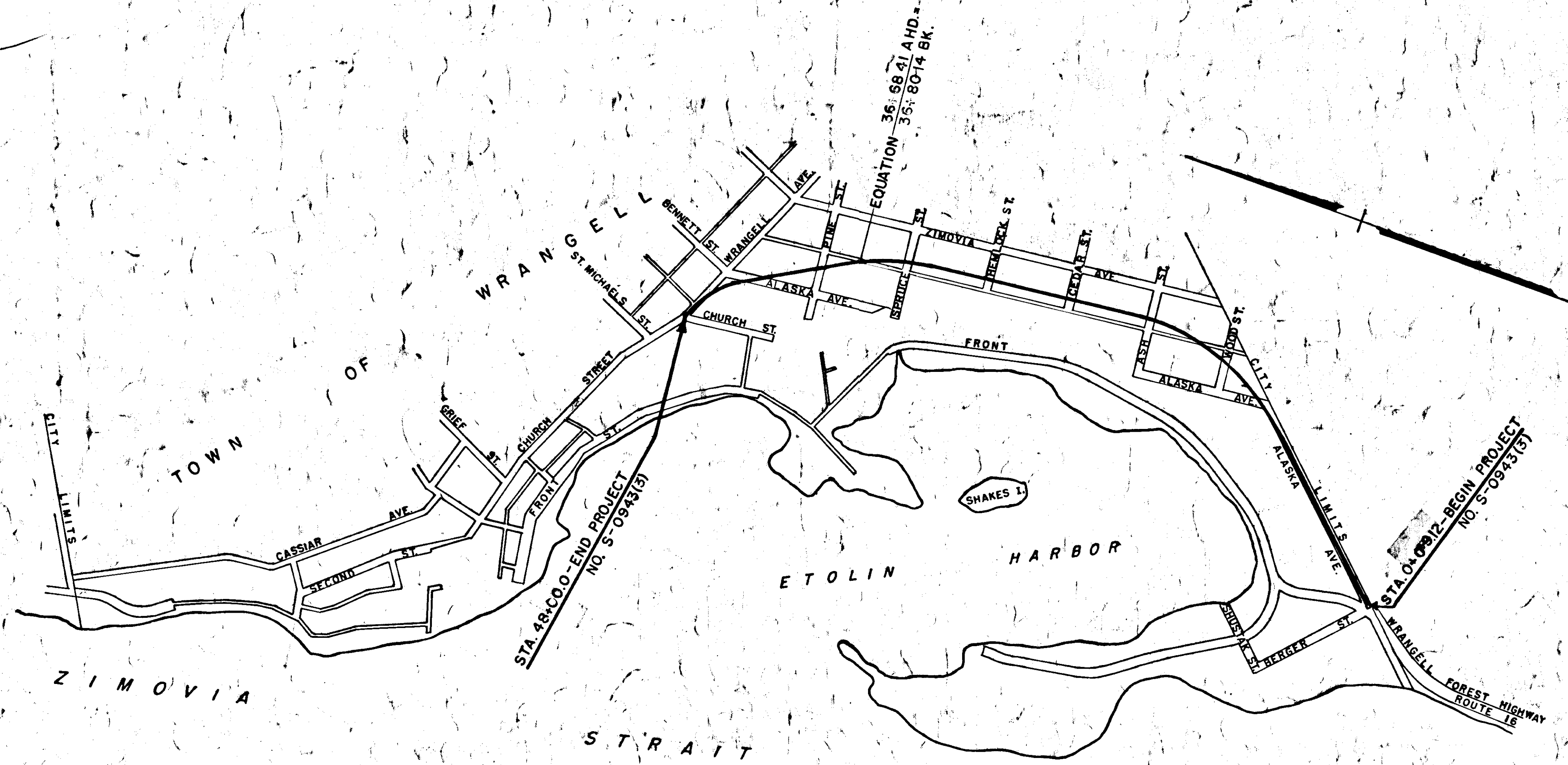
PROJECT SUMMARY

WIDTH OF SUBGRADE	42'
LENGTH OF GRADING & DRAINAGE	4,802.61=0.910 Mi.
TOTAL LENGTH OF PROJECT	4,802.61=0.910 Mi.

TYPE 0011 IMPROVEMENT!

DESIGN DESIGNATION

ADT (1960) = 550	D = 60 %
ADT (1980) = 1100	T = 5 %
DHV = 143	V = 30 MPH



CONVENTIONAL SIGNS

SECTION LINE	—
CULVERT	—
UTILITY POLE	●
"P" LINE	—
LINE TO BE CONSTRUCTED	—
MILE POST	61
RIGHT OF WAY LINE	—
TRAVELED WAY	—
WATER MAIN	—
SEWER LINE	—
MANHOLE (WATER)	—
MANHOLE (SEWER)	—
FIRE HYDRANT	—
UTILITY POLE TO BE MOVED	—
BRASS CAP MONUMENT & CASE	—
GATE VALVE	—

STATE OF ALASKA
DEPT. OF PUBLIC WORKS
DIVISION OF HIGHWAYS

APPROVED
F. D. Sherwood Date Nov 16, 1960
DIRECTOR, DIVISION OF HIGHWAYS

APPROVED
Antonia J. J. [Signature] Date 1/5/61
REGIONAL ENGINEER
BUREAU OF PUBLIC ROADS
REGION TEN

AS BUILT QUANTITIES AND CHANGES - Dec. 1962
AS BUILT QUANTITIES AND CHANGES - Checked

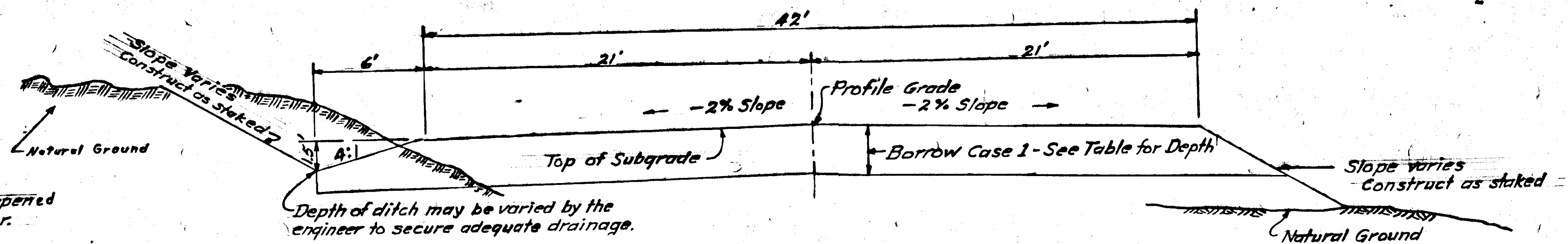
AS BUILT

TYPICAL SECTION OF IMPROVEMENT

TABLE OF SLOPES

Height of Cut or fill	Earth Slope
0' - 10'	4:1
10' - 15'	3:1
Over 15'	2:1

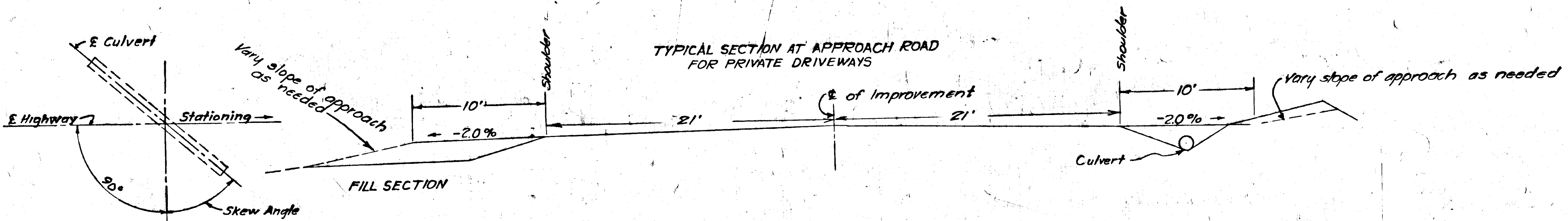
In rock, slopes shall be steepened as directed by the engineer.



GENERAL NOTES

1. Culvert lengths are approximate only and are subject to minor revisions.
2. Grades and alignment shown on these plans are subject to minor revisions.
3. All buildings, fences and power poles within Right-of-Way limits shall be removed by others.
4. Rock excavation to be placed in fill around culvert at station 37+80 as directed by engineer.
5. Water main must be protected by contractor at all times.

TYPICAL SECTION AT APPROACH ROAD FOR PRIVATE DRIVEWAYS



SKREW ANGLE

SUPERELEVATION

DEGREE OF CURVE	GRADES 0.00% - 3.99%	GRADES 4.00% - 6.00%	GRADES 6.00% & UP
1°	0.02	0.02	0.02
1° 30'	0.03	0.03	0.03
2°	0.04	0.04	0.04
2° 30'	0.05	0.05	0.05
3°	0.06	0.06	0.05
3° 30'	0.07	0.06	0.05
4°	0.08	0.06	0.05
Over 4°00'	0.08	0.06	0.05

Rate of superlevation shown in feet per foot width of roadway. Grades under 2% rotate superlevation from normal shoulder grade; grades 2% or over rotate superlevation about centerline. Rate of superlevation and length of transition may be decreased by the engineer due to reduced speed zones, excessive grades, insufficient distance between reversing curves or other such conditions. Full superlevation on curves shall not be less than 0.02 feet per foot. Begin superlevation 200' ahead of P.C.; end superlevation 200' past P.T. Hold full super from P.C. to P.T.

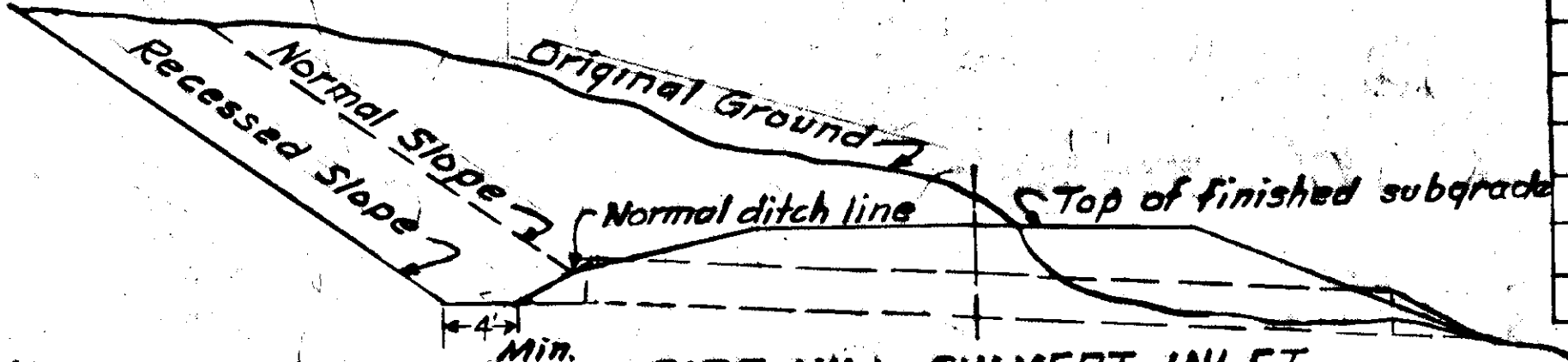
ESTIMATE OF QUANTITIES

FINAL QUANTITY	ITEM NO.	QUANTITY	UNIT	ITEM
8,804	100 (3)	8.6	Acre	CLEARING AND GRUBBING
29,030	102 (1)	30,000	Cu. Yd.	UNCLASSIFIED EXCAVATION
29,141	102 (4)	28,000	Cu. Yd.	BORROW EXCAVATION - CASE 1
9564	103 (1)	930	Cu. Yd.	EXCAVATION FOR STRUCTURES
12,606	105 (2)	12,000	Yd.-Mi.	OVERHAUL (2000' FREE HAUL)
108,855	105 (3)	103,000	Yd.-Mi.	OVERHAUL OF BORROW, CASE 1 (1000' Freehaul)
202	453 (4D)	202	Lin. Ft.	15" ASBESTOS-BONDED CORRUGATED METAL PIPE
1026	453 (4G)	1026	Lin. Ft.	24" ASBESTOS-BONDED CORRUGATED METAL PIPE
90	453 (4M)	90	Lin. Ft.	60" ASBESTOS-BONDED CORRUGATED METAL PIPE
80	454 (4F)	80	Lin. Ft.	43"x 27" ASBESTOS-BONDED CORRUGATED METAL PIPE-ARCH
267	457 (1)	267	Lin. Ft.	REMOVAL OF PIPE CULVERTS
12	460 (2D)	12	Each	BITUMINOUS-COATED METAL END SECTION FOR 15" CULVERT PIPE
29	460 (2G)	29	Each	BITUMINOUS-COATED METAL END SECTION FOR 24" CULVERT PIPE
2	460 (3F)	2	Each	BITUMINOUS-COATED METAL END SECTION FOR 43"x 27" PIPE ARCH
2	521 (7)	1	Each	ADJUSTING MANHOLES
13	560 (5)	13	Each	BRASS CAP MONUMENT
13	561 (1)	13	Each	MONUMENT CASES
3	584 (1)	3	Each	STANDARD SIGNS

TABLE OF BORROW

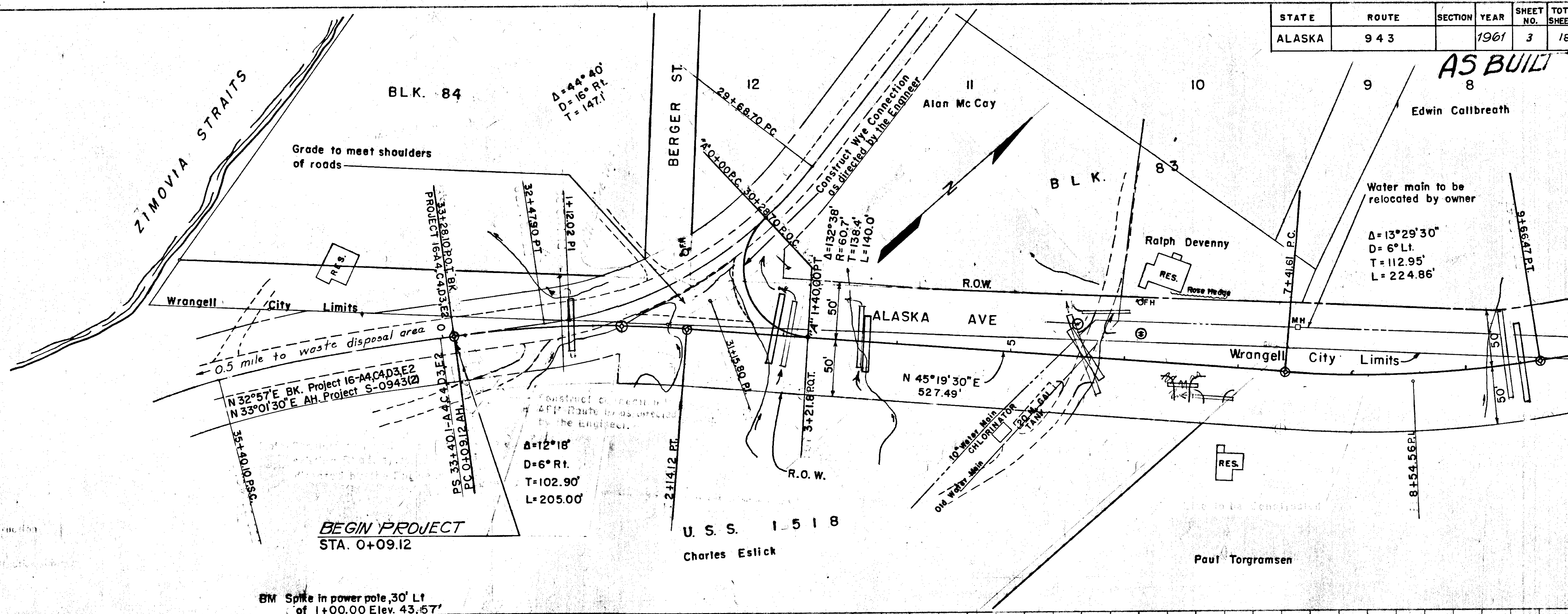
STATION - STATION	DEPTH	
0+09.12	17+90	18"
17+90	20+65	36"
20+65	39+10	18"
39+10	48+00	48"

Above depths may be varied as directed by the engineer.

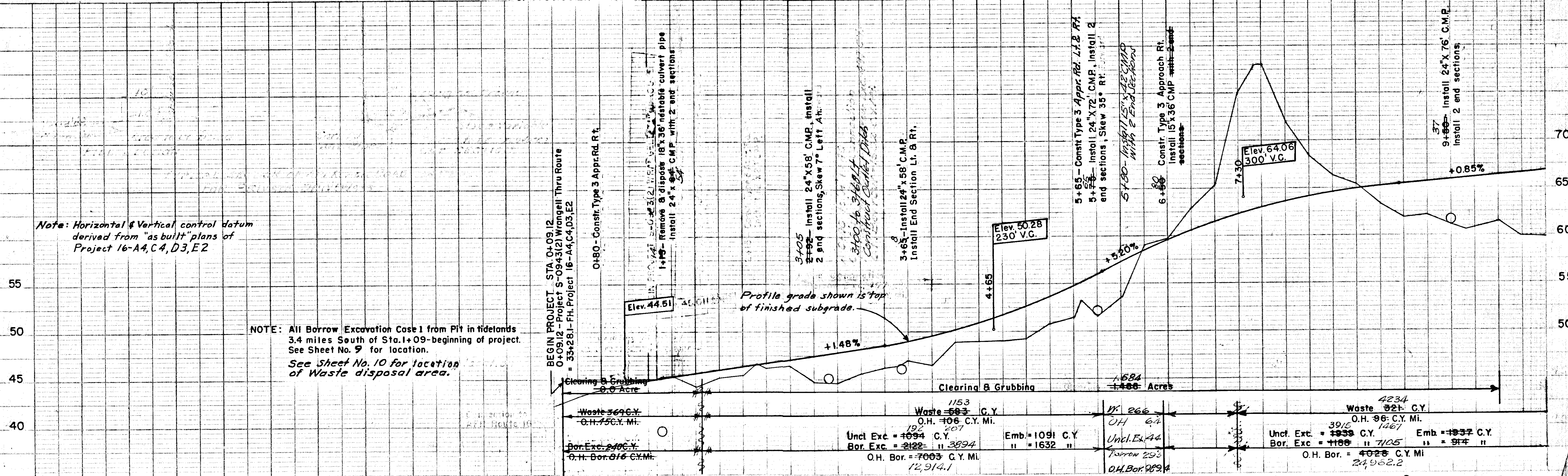


STATE	ROUTE	SECTION	YEAR	SHEET NO.	TOTAL SHEETS
ALASKA	943		1961	3	18

AS BUILT
8



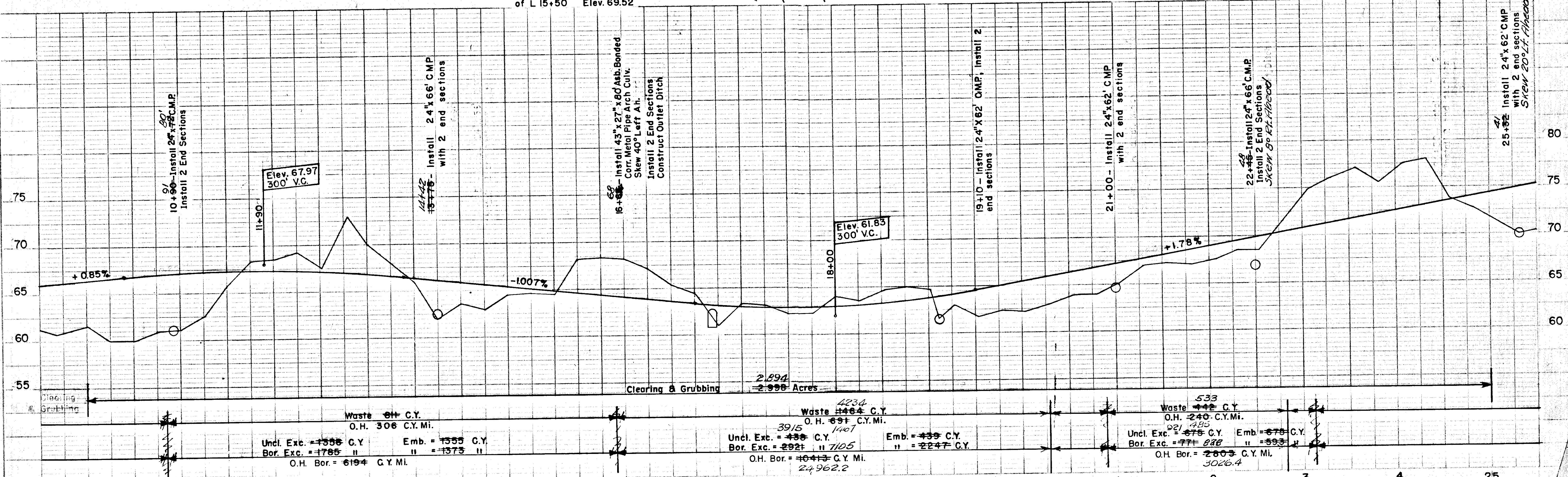
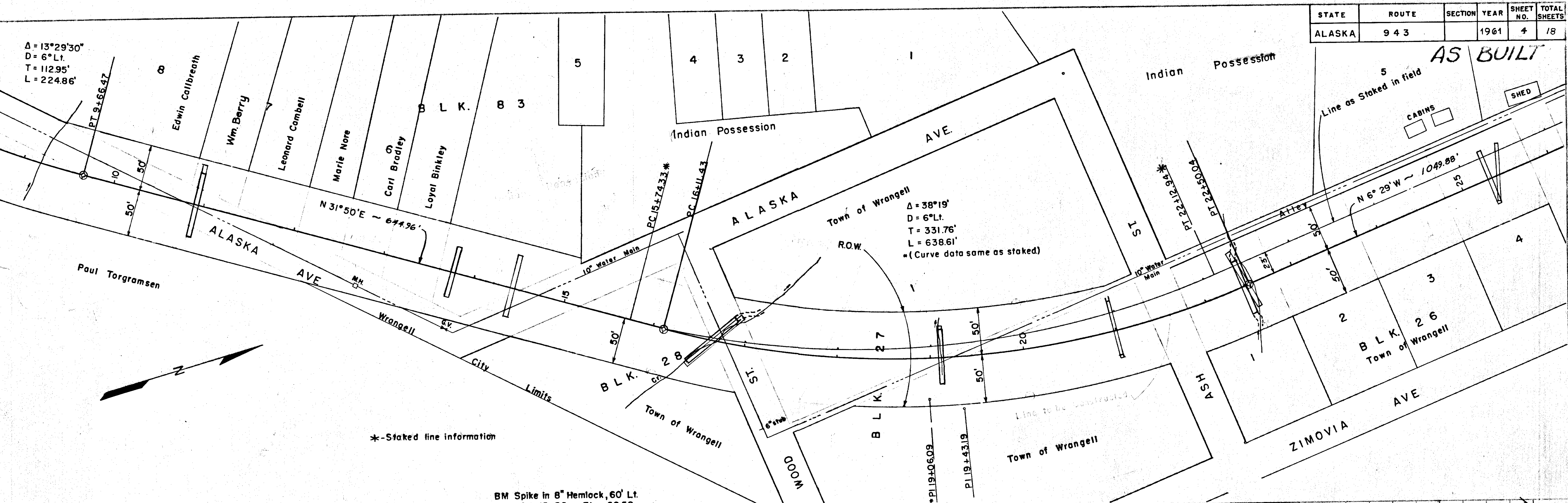
BM Spike in power pole, 30' Lt of 1+00.00 Elev. 43.57'



Note: Horizontal & Vertical control datum derived from "as built" plans of Project 16-A4,C4,D3,E2

NOTE: All Borrow Excavation Case 1 from Pit in tidelands 3.4 miles South of Sta. 1+09-beginning of project. See Sheet No. 9 for location. See Sheet No. 10 for location of Waste disposal area.

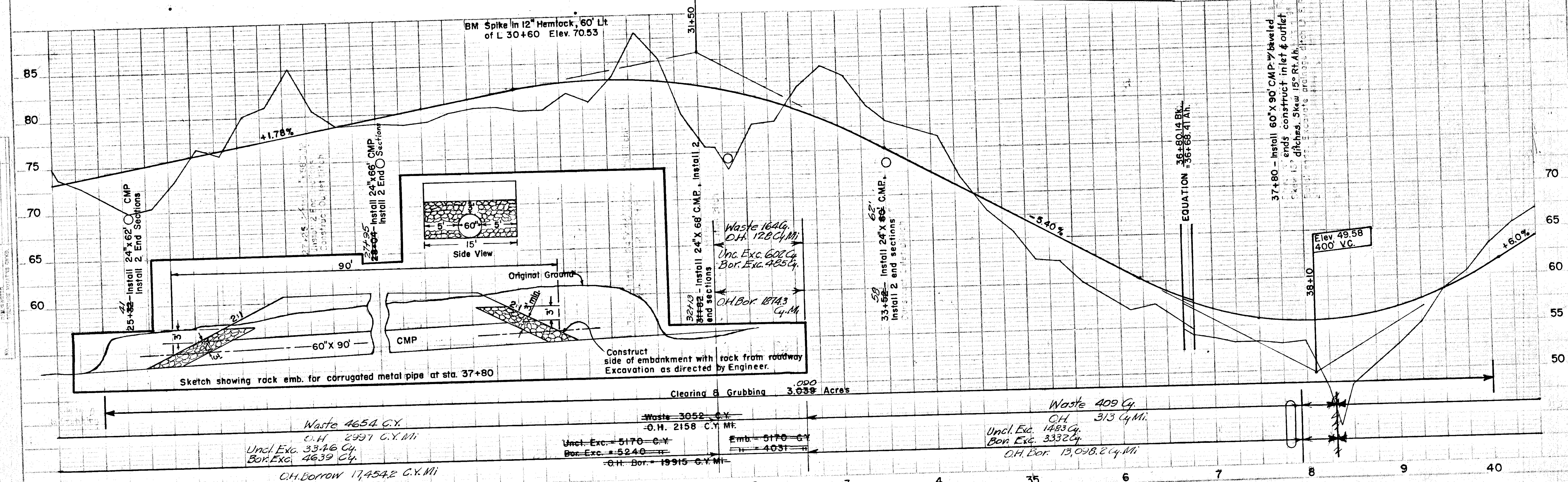
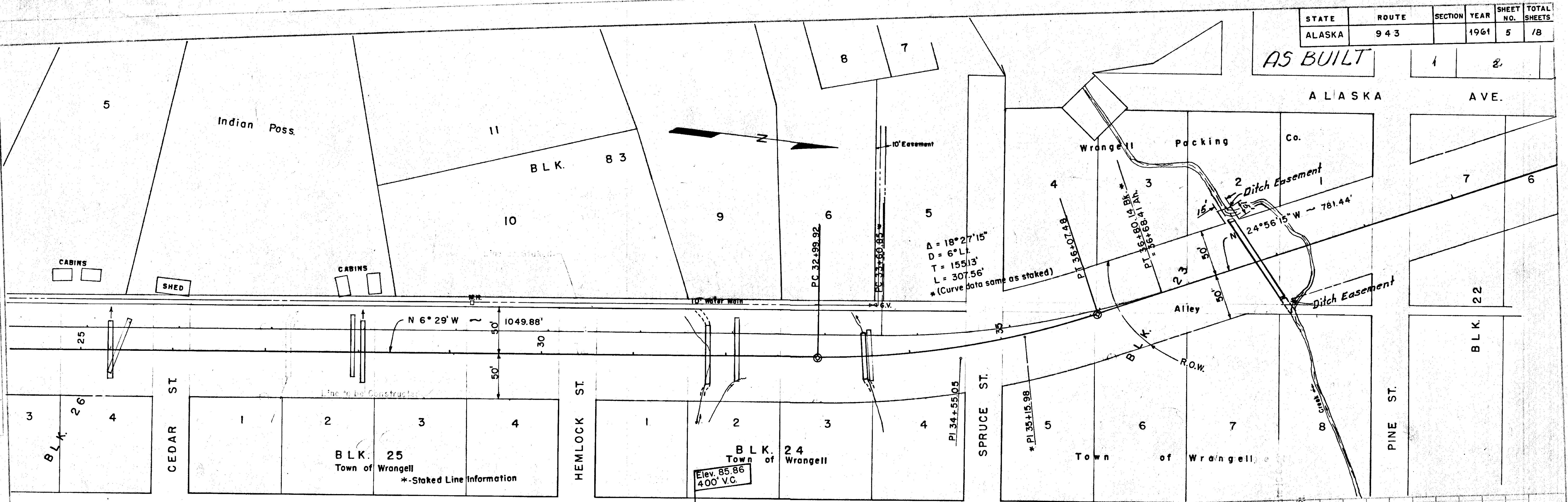
STATE	ROUTE	SECTION	YEAR	SHEET NO.	TOTAL SHEETS
ALASKA	943		1961	4	18



STATE	ROUTE	SECTION	YEAR	SHEET NO.	TOTAL SHEETS
ALASKA	943		1961	5	18

AS BUILT

1	2



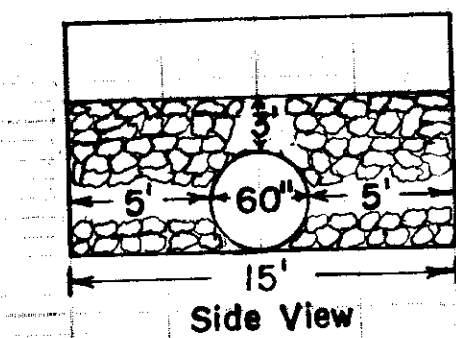
Waste 4654 C.Y.
O.H. 2997 C.Y. Mf.
Uncl. Exc. 3346 C.Y.
Bor. Exc. 4639 C.Y.
O.H. Borrow 17,454.2 C.Y. Mf.

Waste 3052 C.Y.
O.H. 2158 C.Y. Mf.
Uncl. Exc. 5170 C.Y.
Bor. Exc. 5240 C.Y.
O.H. Bor. 19915 C.Y. Mf.

Waste 409 C.Y.
O.H. 313 C.Y. Mf.
Uncl. Exc. 1483 C.Y.
Bor. Exc. 3332 C.Y.
O.H. Bor. 13,098.2 C.Y. Mf.

Clearing & Grubbing 3.639 Acres

Sketch showing rock emb. for corrugated metal pipe at sta. 37+80



Construct side of embankment with rock from roadway
Excavation as directed by Engineer.

EQUATION $36+80.14 \text{ BY } 36+86.41 \text{ AT}$

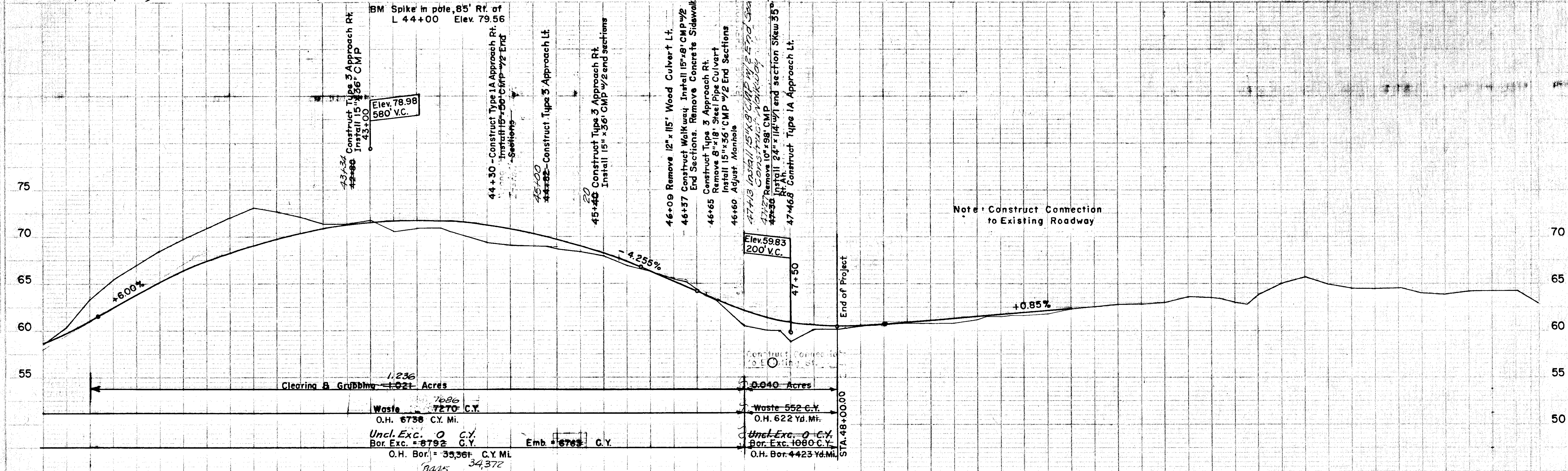
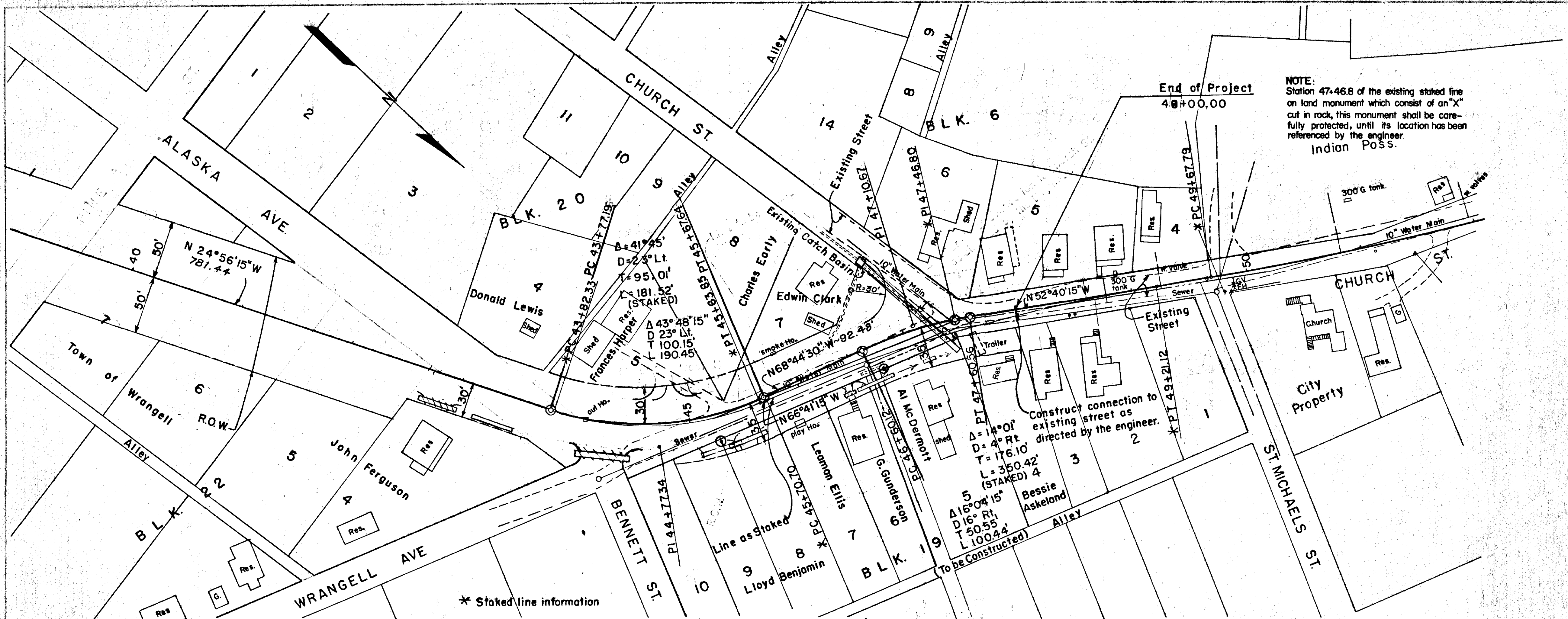
37+80 - install 60\"/>

Waste 1649
O.H. 128 C.Y. Mf.
Uncl. Exc. 600 C.Y.
Bor. Exc. 485 C.Y.
O.H. Bor. 1874.3 C.Y. Mf.

STATE	ROUTE	SECTION	YEAR	SHEET NO.	TOTAL SHEETS
ALASKA	943		1961	6	18

AS BUILT

NOTE:
Station 47+46.8 of the existing staked line on land monument which consist of an "X" cut in rock, this monument shall be carefully protected, until its location has been referenced by the engineer.
Indian Poss.



LIST OF CULVERTS AND MISCELLANEOUS WORK

STATION	DESCRIPTION	102(1) UNCLASSIFIED EXCAVATION CU. YD.	102(4) BORROW EXCAVATION CASE 1 CU. YD.	103(1) EXCAVATION FOR STRUCTURES CU. YD.	453(4D) 15" C.M.P. LIN. FT.	453(4E) 24" C.M.P. LIN. FT.	453(4M) 60" C.M.P. LIN. FT.	454(4F) 43"x27" CORR. METAL PIPE ARCH LIN. FT.	457(1) REMOVAL OF PIPE CULVERT	460(2D) METAL END SECTION EACH 15" C.M.P.	460(2E) METAL END SECTION EACH 24" C.M.P.	460(3F) METAL END SECTION EACH 43"x27" PIPE ARCH	521(7) ADJUST MANHOLE EACH	REMARKS
	NOTE: ALL C. M. P. SHALL BE ASBESTOS-BONDED. ALL METAL END SECTIONS SHALL BE BITUMINOUS COATED													AS BUILT
0 + 80	CONSTRUCT TYPE 3 APPROACH RT.	102	40											
1 + 45	REMOVE 18" x 36" C. M. P. INSTALL 24" x 36" C. M. P.	78	21	115.6 52		54 54		36			2			
2 + 92	INSTALL 24" x 58' C. M. P. SKEW 7° LEFT AH	17	20	37.5 25		58					2			
3 + 21.8 - "A" 1 + 40	CONSTRUCT WYE CONNECTION		497											
3 + 65	INSTALL 24" x 58' C. M. P.	1	20	29.6 25		58					2			
5 + 65	CONSTRUCT TYPE 3 APPROACH LT. & RT.		110											
5 + 75	INSTALL 24" x 72' C. M. P. SKEW 35° RT. AH	23	22	45.6 28		72					2			
6 + 50	CONSTRUCT TYPE 3 APPROACH RT. INSTALL 15" x 36' C. M. P.	465	60	7		36				12				
9 + 50	INSTALL 24" x 76' C. M. P.	2.4	24	36.1 24		76					2			
10 + 90	INSTALL 24" x 72' ^{80'} C. M. P.		23	37.2 25		80 72					2			
13 + 75	INSTALL 24" x 66' C. M. P.	48	21	35		66					2			
16 + 65	INSTALL 43" x 27" x 80' C. M. P. A. SKEW 40° LEFT, AH, CONSTRUCT OUTLET DITCH	5	33	67.5 25				80				2		
19 + 10	INSTALL 24" x 62' C. M. P.	73		53.5 25		62					2			TRENCH THRU EMBANKMENT
	INSTALL 24" x 62' C. M. P.	48	20	24.5 25		62					2			

LIST OF CULVERTS AND MISCELLANEOUS WORK

STATE ALASKA ROUTE 943 SECTION YEAR 1961 SHEET NO. 8 TOTAL SHEETS 18

AS BUILT

STATION

DESCRIPTION

NOTE: ALL C. M. P. SHALL BE ASBESTOS-BONDED
ALL METAL END SECTIONS SHALL BE BITUMINOUS COATED

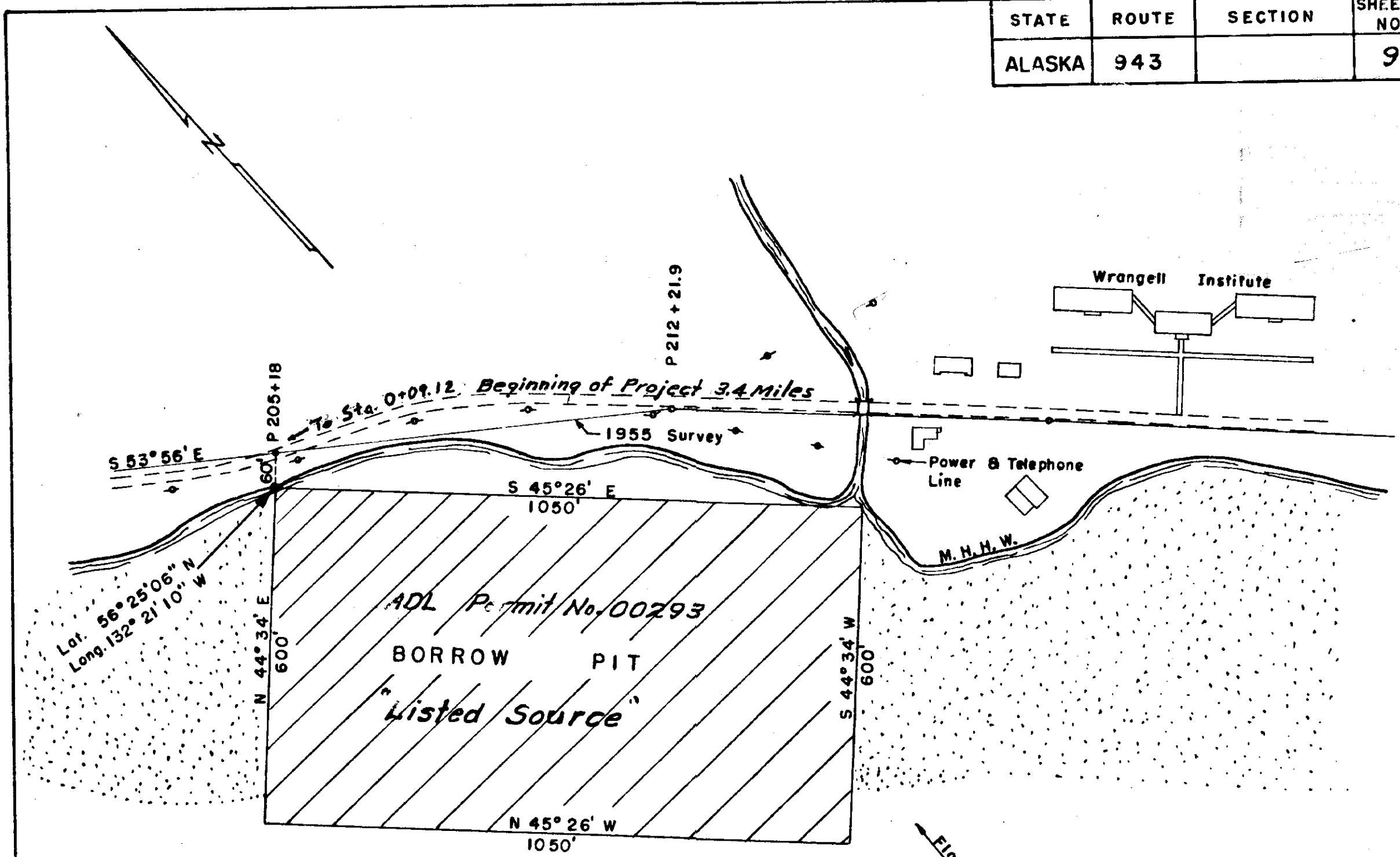
102(I) UNCLASSIFIED EXCAVATION CU. YD.
102(4) BORROW EXCAVATION CASE 1 CU. YD.
103(I) EXCAVATION FOR STRUCTURES CU. YD.
453(4D) 15" C.M.P. LIN. FT.
453(4G) 24" C.M.P. LIN. FT.
453(4M) 60" C.M.P. LIN. FT.
454(4F) 43"x27" CORR. METAL PIPE ARCH
457(I) REMOVAL OF PIPE CULVERT
460(2D) METAL END SECTION EACH 15" C.M.P.
460(2G) METAL END SECTION EACH 24" C.M.P.
460(3F) METAL END SECTION ARCH 43"x27" PIPE
521(I) ADJUST MANHOLE EACH

REMARKS

STATION	DESCRIPTION	102(I)	102(4)	103(I)	453(4D)	453(4G)	453(4M)	454(4F)	457(I)	460(2D)	460(2G)	460(3F)	521(I)	REMARKS
22 + 15 ⁴⁹	INSTALL 24" x 66' C. M. P.	940	11	356		66					2			
25 + 2 ⁴¹	INSTALL 24" x 62' C. M. P.	45	10	388		62					2			
27 + 0 ⁹⁵	INSTALL 24" x 66' C. M. P.	86	11	475		66					2			
32 + 12 ¹³	INSTALL 24" x 68' C. M. P.	7	12	213		68					2			
33 + 11 ⁵⁸	INSTALL 24" x 60' C. M. P.	71	19	725		60					2			
37 + 20	INSTALL 60" x 90' C.M.P. SKEW 15° RT. AH	45	16	28			90							BEVELED ENDS 2:1 SL
43 + 32 ³⁴	CONSTRUCT TYPE 3 APPROACH RT. INSTALL 15" x 36' C. M. P.	2	16	4	36					2			1	
44 + 30 ³⁰	Adjust sewer manhole Rt. CONSTRUCT TYPE 1 A APPROACH RT.	71	18	4	36					11				
45 + 28 ⁰⁰	INSTALL 15" x 36' C.M.P. CONSTRUCT TYPE 3 APPROACH LT.		17											
45 + 28 ²⁰	CONSTRUCT TYPE 3 APPROACH RT. INSTALL 15" x 36' C. M. P.	17	3	4	36						2			
46 + 59 ³⁷	CONSTRUCT WALKWAY. REMOVE CONC. S.W. INSTALL 15"x8' C.M.P.	4	2		8						2		1	
46 + 60	ADJUST SEWER MANHOLE													
46 + 62	CONSTRUCT TYPE 3 APPROACH RT. INSTALL 15"x36' CMP. REMOVE 8"x18' CULV.	4	18	4	36			18			2			
47 + 25 ²⁷	REMOVE 10" x 98' C. M. P. INSTALL 24"x111' C. M. P. SKEW 35° RT. AH	34	33	638		114		98				1		FRENCH THRU EMBANK
46 + 09 TO 46 + 90	REMOVE 12"x111' WOOD CULVERT Install 15"x8' CMP				8			115			2			
47 + 46.8	CONSTRUCT TYPE 1A APPROACH LT.		163										2	
		691	1510	888	202	1026	90	80	267	12	29	2	24	

STATE	ROUTE	SECTION	SHEET NO.	TOTAL SHEETS
ALASKA	943		9	18

GRAVEL PIT RESERVE
WRANGELL



Z I M O V I A

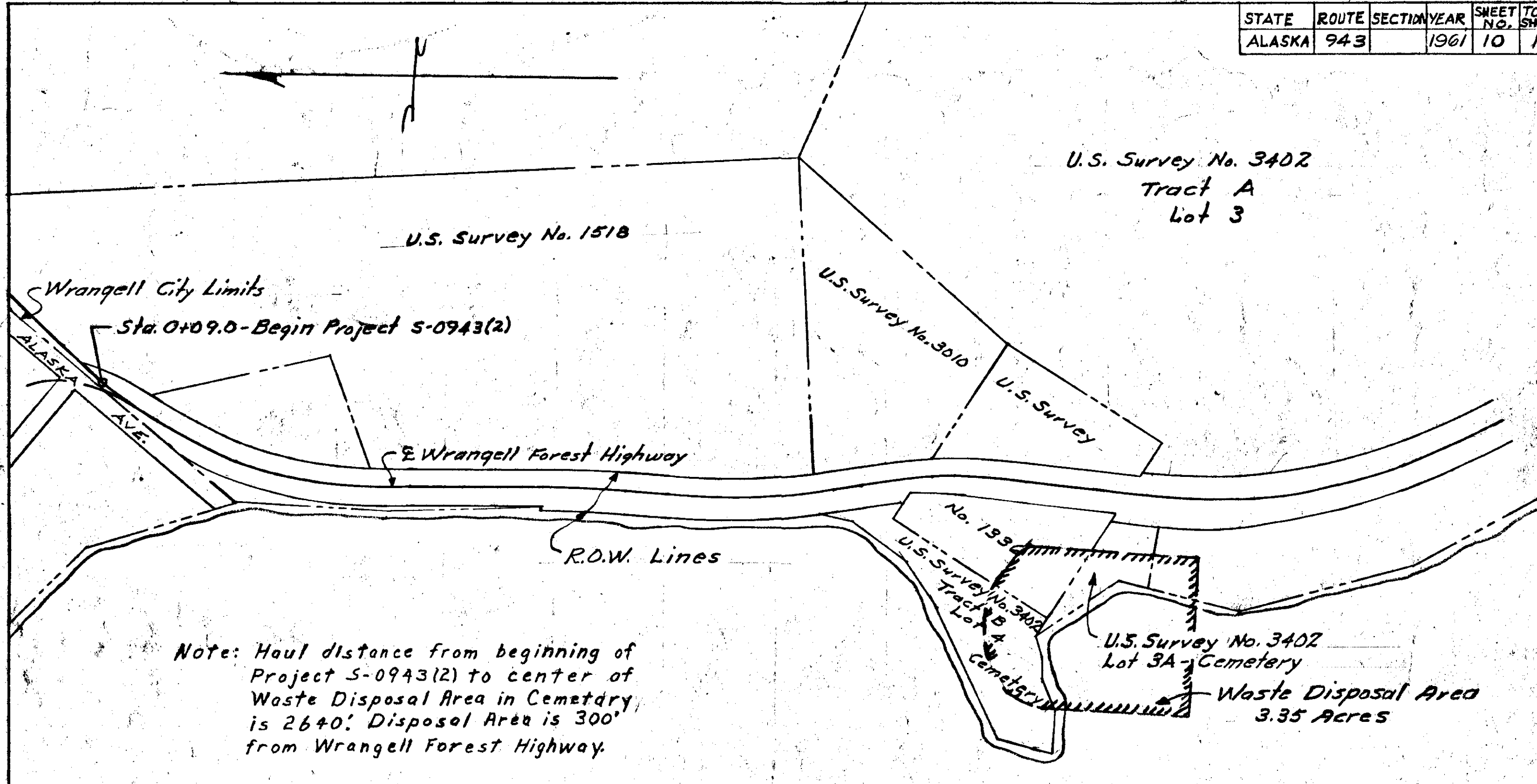
S T R A I T

U.S. DEPARTMENT OF COMMERCE
BUREAU OF PUBLIC ROADS
DIVISION 10
SKETCH SHOWING
GRAVEL PIT RESERVE
Scale: - 1" = 200'
JUNEAU, ALASKA Oct. 2, 1959

made by W.K.
checked by _____

AREA SHOWN THUS CONTAINING
. 14.5 ACRES MORE OR LESS

STATE	ROUTE	SECTION	YEAR	SHEET NO.	TOTAL SHEETS
ALASKA	943		1961	10	18



DEPARTMENT OF PUBLIC ROADS
 JUNEAU DIVISION
 LOCATION SKETCH
 OF
 WASTE DISPOSAL AREA
 PROJECT S-0943(2)
 WRANGELL, ALASKA
 Scale: 1" = 200' 2/24/60

