

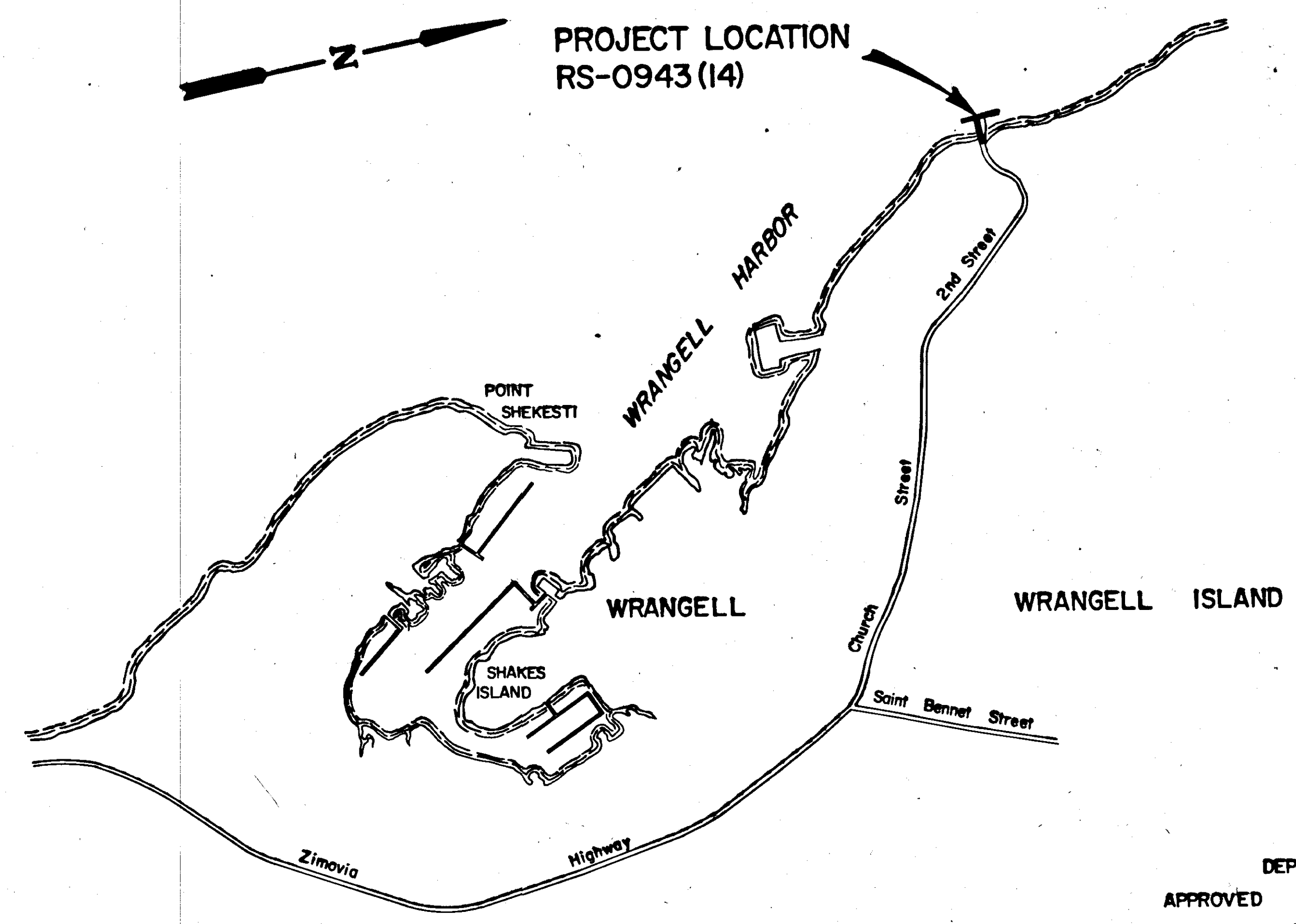
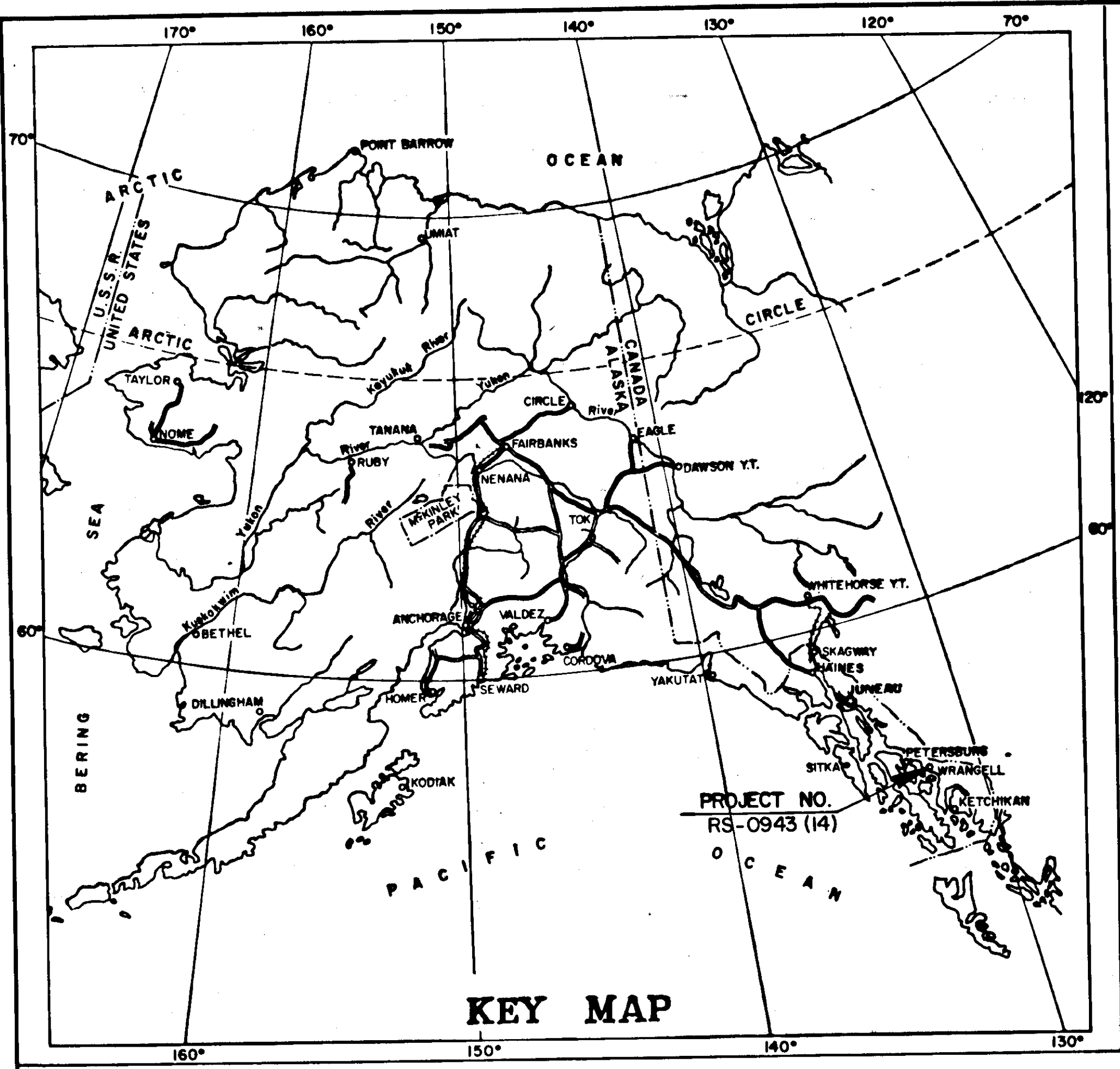
**STATE OF ALASKA
DEPARTMENT OF HIGHWAYS
AND
DEPARTMENT OF PUBLIC WORKS**

**RS-0943 (14)
FERRY TERMINAL FACILITIES
AT WRANGELL
*AS BUILT PLANS***

INDEX OF SHEETS

SHEET NO.	DESCRIPTION
1	TITLE SHEET
2	PLAN & PROFILE AND ESTIMATE OF QUANTITIES
3	PIPE PILE DOLPHIN DETAILS
4	CONSTRUCTION LAYOUT, PILE ANCHORAGE, & MISCELLANEOUS DETAILS
5	DOCK MODIFICATION & HANDRAIL LAYOUT
6	CATWALK, HANDRAIL & MISCELLANEOUS DETAILS

*Contractor: T.O. Padlock Co, Riley Pleas, Inc., J/V
Proj. Engineer: John McGrath to Nov. 17, 1977
John Edwards-Nov. 18, 1977 to Completion
Notice to Proceed: June 21, 1977
Final Inspection: May 4, 1978
Accepted for Traffic & Maintenance: May 4, 1978*

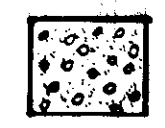




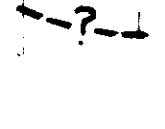



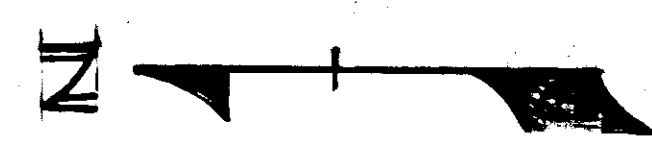
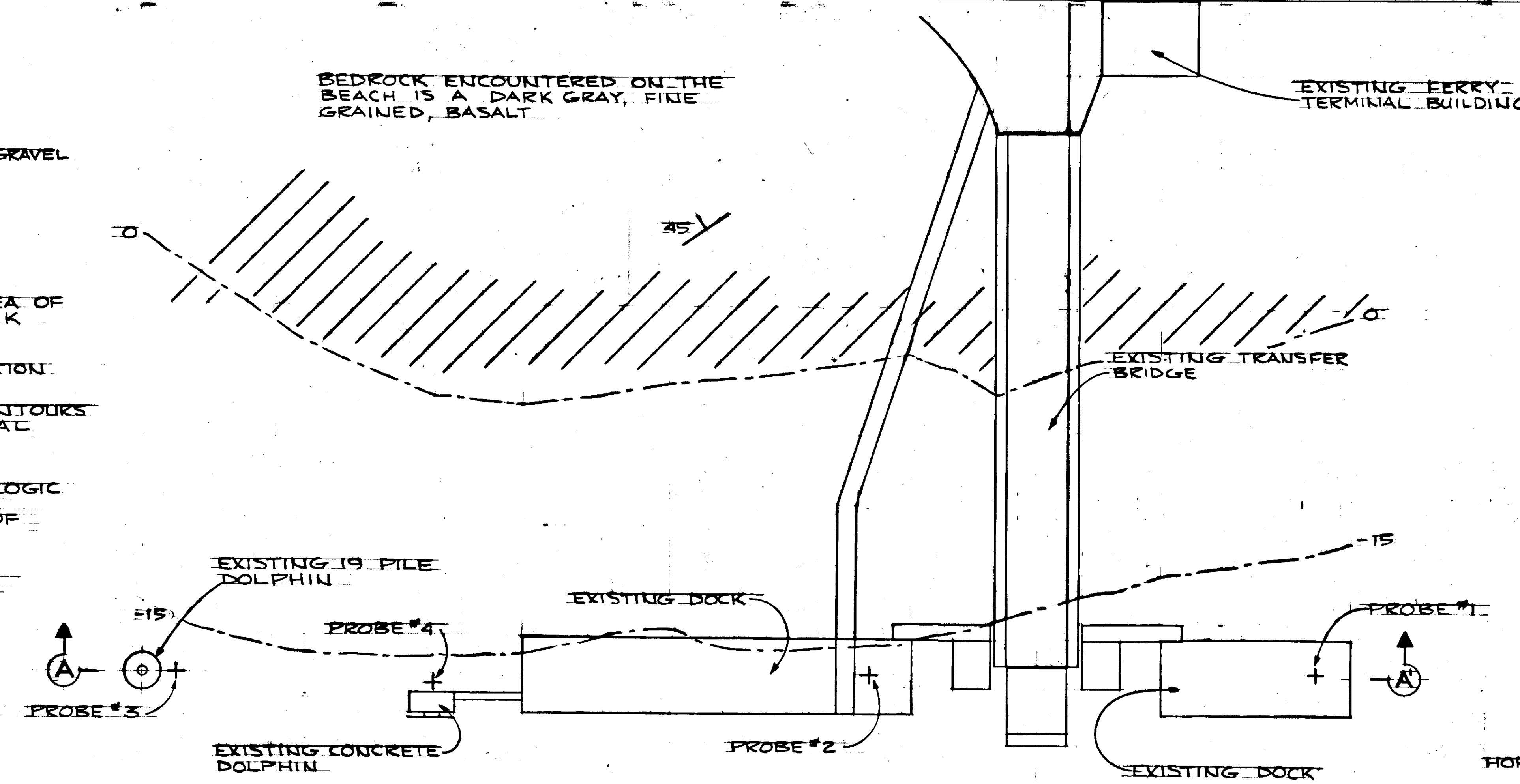
STATE OF ALASKA
DEPARTMENT OF HIGHWAYS
APPROVED
Wallace K. Wilson Date 4/11/77
SOUTHEASTERN DIVISION ENGINEER

STATE OF ALASKA
DEPARTMENT OF HIGHWAYS
APPROVED
W. Scorsell Date 4/11/77
COMMISSIONER OF HIGHWAYS

STATE	PROJECT DESIGNATION	YEAR	SHEET NO.	TOTAL SHEETS
ALASKA	RS-0943 (14)	1977	2	6

KEY

-  GRAVELLY SAND TO GRAVEL
-  BEDROCK OR TILL
-  APPROXIMATE AREA OF EXPOSED BEDROCK
-  PROBE HOLE LOCATION
-  BATHYMETRIC CONTOURS ON LINES OF EQUAL ELEVATIONS
-  APPROXIMATE GEOLOGIC CONTACT BETWEEN DIFFERENT TYPE OF MATERIAL
-  STRIKE AND DIP OF BEDROCK



DEPTH TO BEDROCK OR TILL

PROBE NO.	REFUSAL DEPTH*
1	NO REFUSAL TO 12 FEET
2	8 FEET
3	4 FEET
4	3 FEET

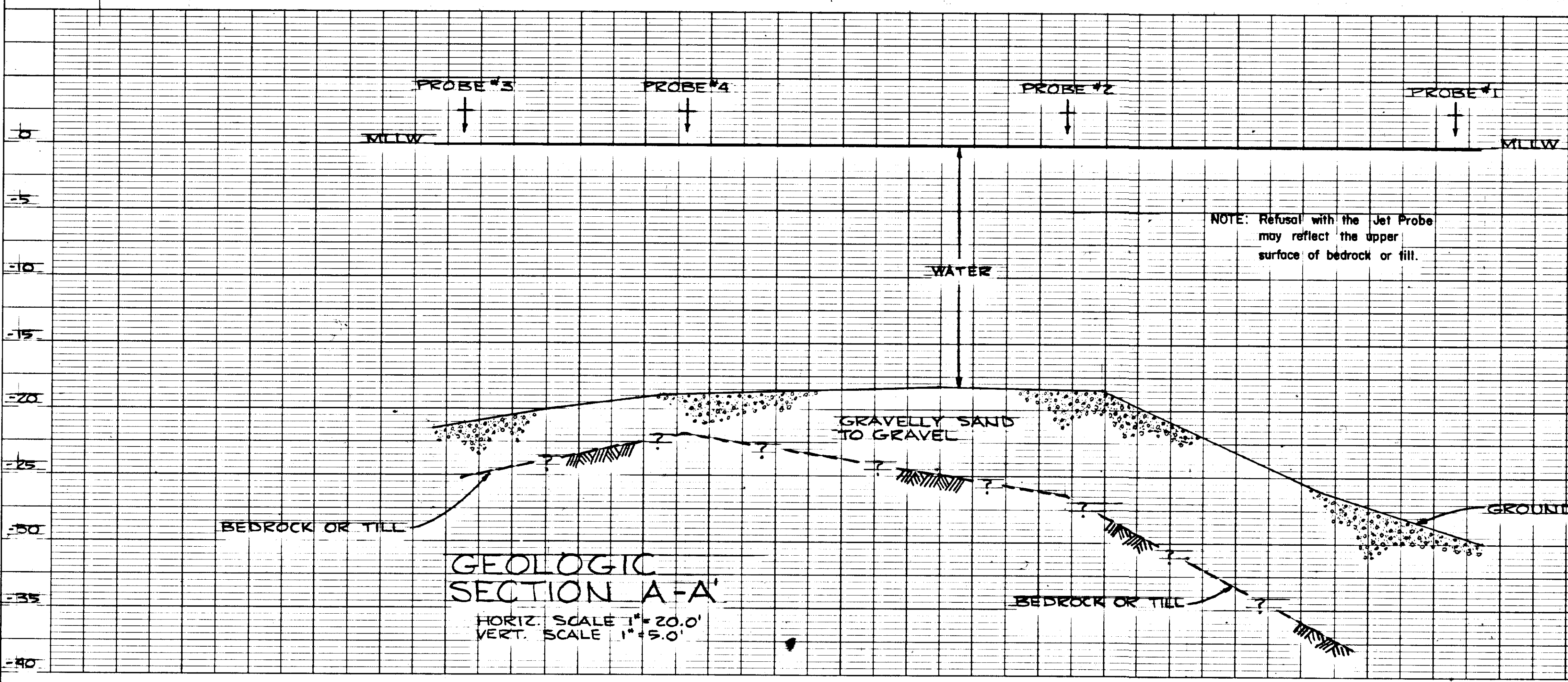
* FROM GROUND LINE

PLAN
HORIZ SCALE 1"=20'

ESTIMATE OF QUANTITIES

Item No.	Item	Unit	Quantity
1	Furnishing and Maintaining Engineering Facilities	L.S.	All Req'd
202 (1)	Removal of Structures and Obstructions	L.S.	All Req'd
504 (3)	Dolphin Steel, Furnished, Fabricated and Erected	L.S.	All Req'd
505 (11A)	Dolphin Pipe piles (18 inch O.D. x 7/16 inch wall thickness) Furnished and Driven	L.F.	1,295-1,156'
505 (11B)	Dolphin Pipe piles (12 inch nominal O.D. x 3/8 inch wall thickness) Furnished and Driven	L.F.	109
505 (12A)	Dolphin Pipe Pile Support leg driving shoe and Torsion fins, Furnished and Installed	Each	12-9
505 (12B)	Dolphin Pipe Pile fender leg driving shoe and Torsion fins, Furnished and Installed	Each	11/2
505 (13A)	Prestressed Dolphin Pipe Pile anchors (250 Kip Capacity) Furnished and Installed	Each	1-1
505 (13B)	Prestressed Dolphin Pipe Pile anchors (200 Kip Capacity) Furnished and Installed	Each	2-1
505 (13C)	Prestressed Dolphin Pipe Pile anchors (50 Kip Capacity) Furnished and Installed	Each	6-5
505 (13D)	Prestressed Dolphin Pipe Pile anchors (25 Kip Capacity) Furnished and Installed	Each	2
505(11C)	Credit Pipe Pile E.W.O. #1	L.S.	All Req'd
506(1)	Untreated Timber No. 2	L.S.	All Req'd
504(A)	Dolphin Steel Modification E.W.O. No. 3	L.S.	All Req'd
505(13E)	Prestressed Dolphin Pipe Pile Anchor (135 Kip Cap.) E.W.O. #A	EA.	1
505(13F)	Drive 3.5" Casings E.W.O. No. 5	L.S.	All Req'd

NOTE: Refusal with the Jet Probe may reflect the upper surface of bedrock or fill.

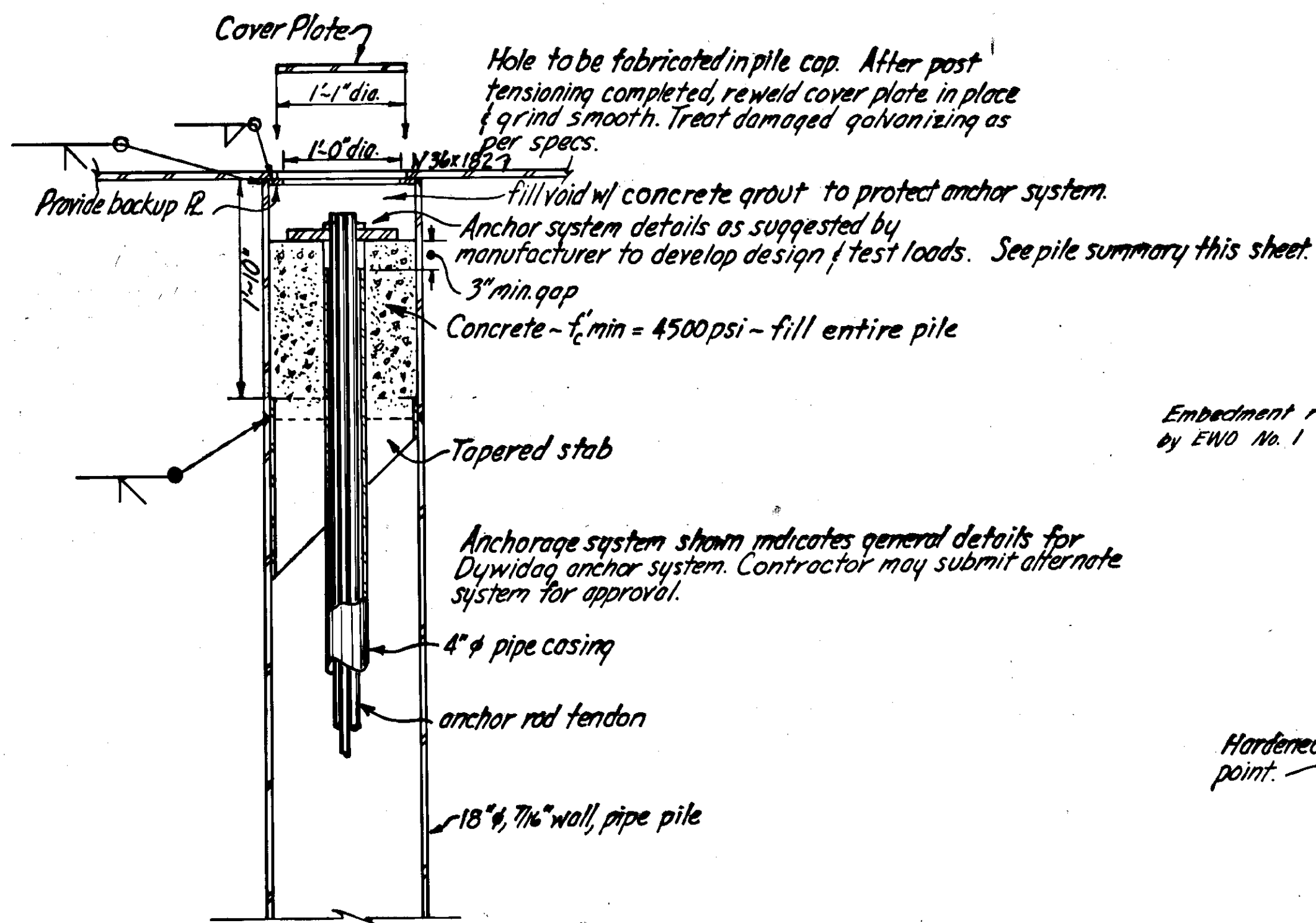


GEOLOGIC SECTION A-A
HORIZ. SCALE 1"=20.0'
VERT. SCALE 1"=5.0'

ENGINEERING GEOLOGY SECTION
MATERIALS DIVISION
ALASKA DEPARTMENT OF HIGHWAYS

WRANGELL FERRY TERM.

DATA: SML	PROJECT NO: RS-0943 (14)
DRAWN: SML	SCALE: AS NOTED
APPROVED: WEB	DATE: 3/1/77

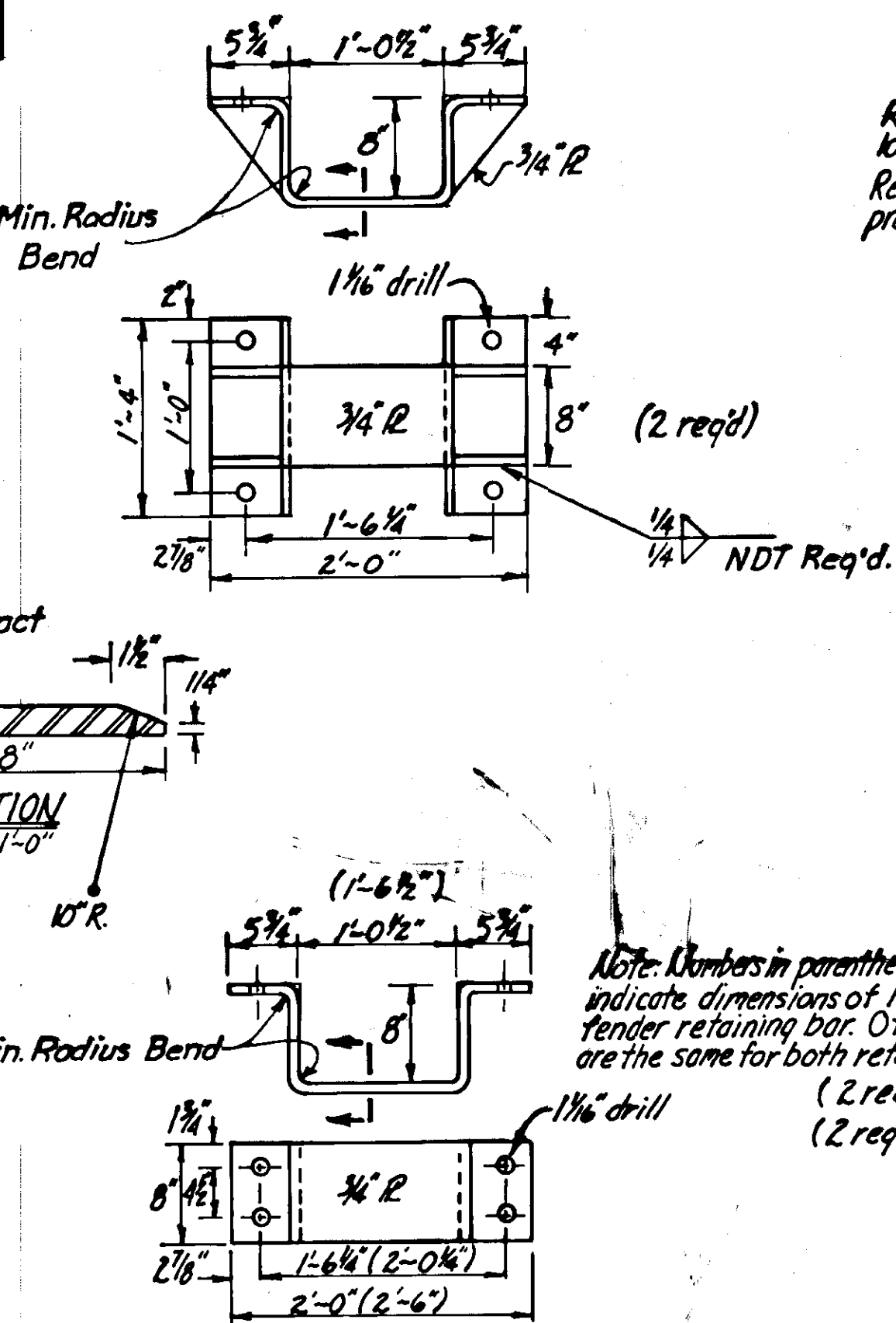
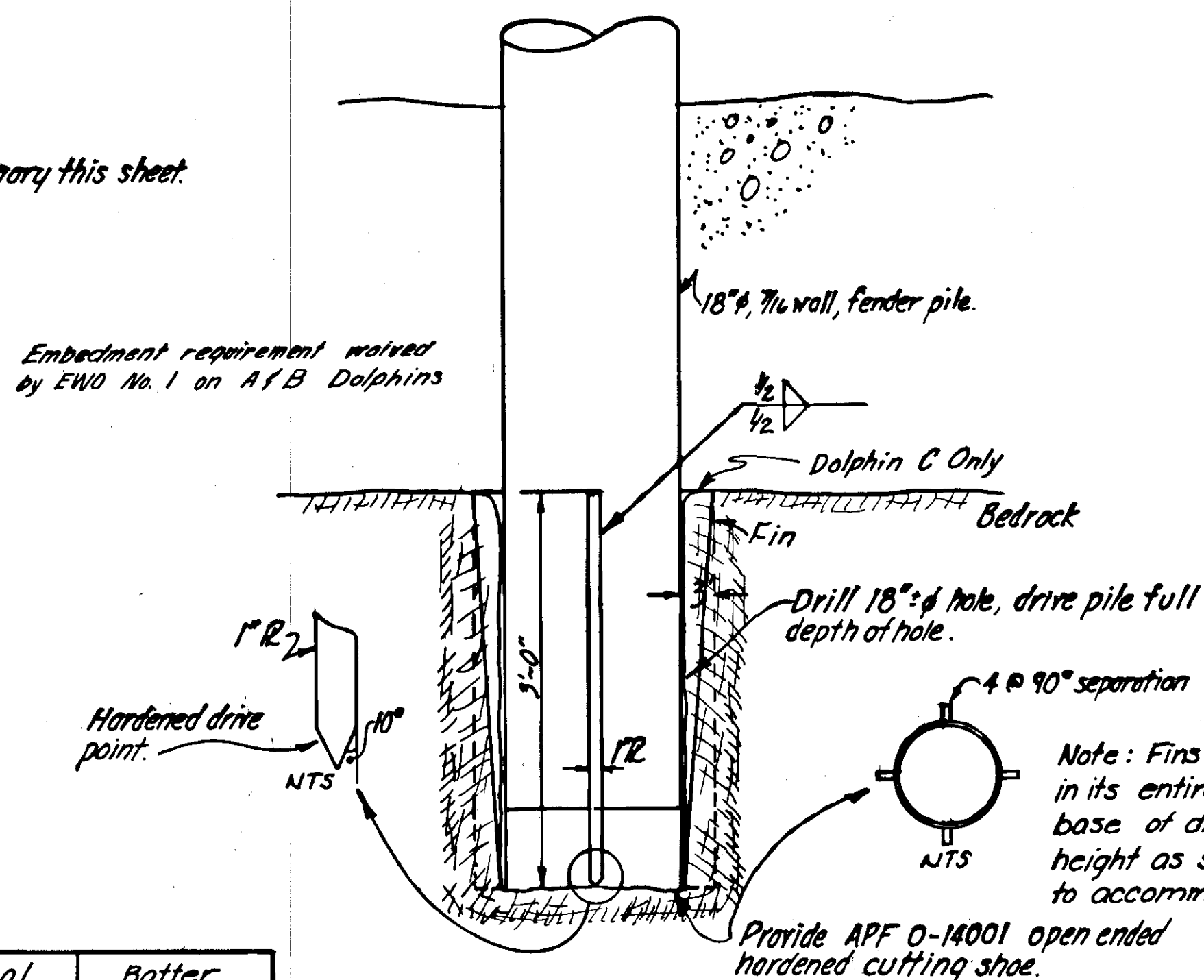
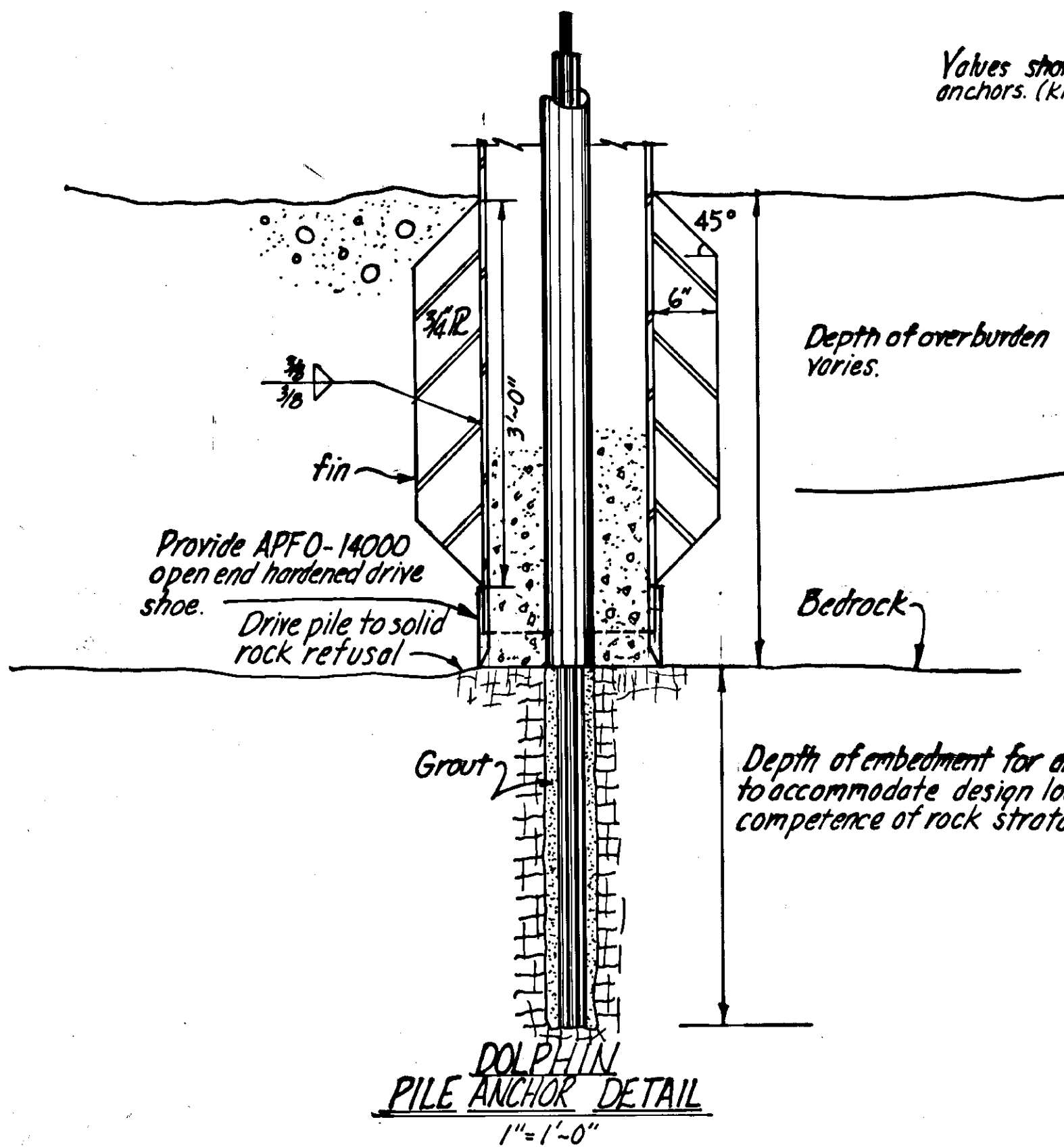


Note: All pen. welds are full pen.

Pile Summary	Type	Tip Elev.	Vertical		Batter	
			Max. up	Max. down	Max. up	Max. down
	Dolphin A	-46.00	200*(200)	100*	50*(50)	100*
	Dolphin B	-28.00	250*(250)	100*	50*(50)	125*
	Dolphin C	-26.00	200*(200)	100*	50*(50)	100*
	12" dia, 3/8" wall thickness	-30.00	25*(25)	25*	25*(25)	25*

* Estimated

Values shown in parenthesis are design post tension loads for anchors. (Kips)



Note: Numbers in parenthesis indicate dimensions of 1-6" fender retaining bar. Others are the same for both retaining bars. (2 req'd for 1-6" fender) (2 req'd for 1-0" fender)

Remove existing 19 pile dolphin at this location. Removed piles to become property of contractor.

Face of fender systems for dolphin "B", existing concrete dolphin, & dolphin "C" to be on same line. ±1.0'

Note: Elevations shown are to mudline. For bedrock elevation refer to Geologist recon. report.

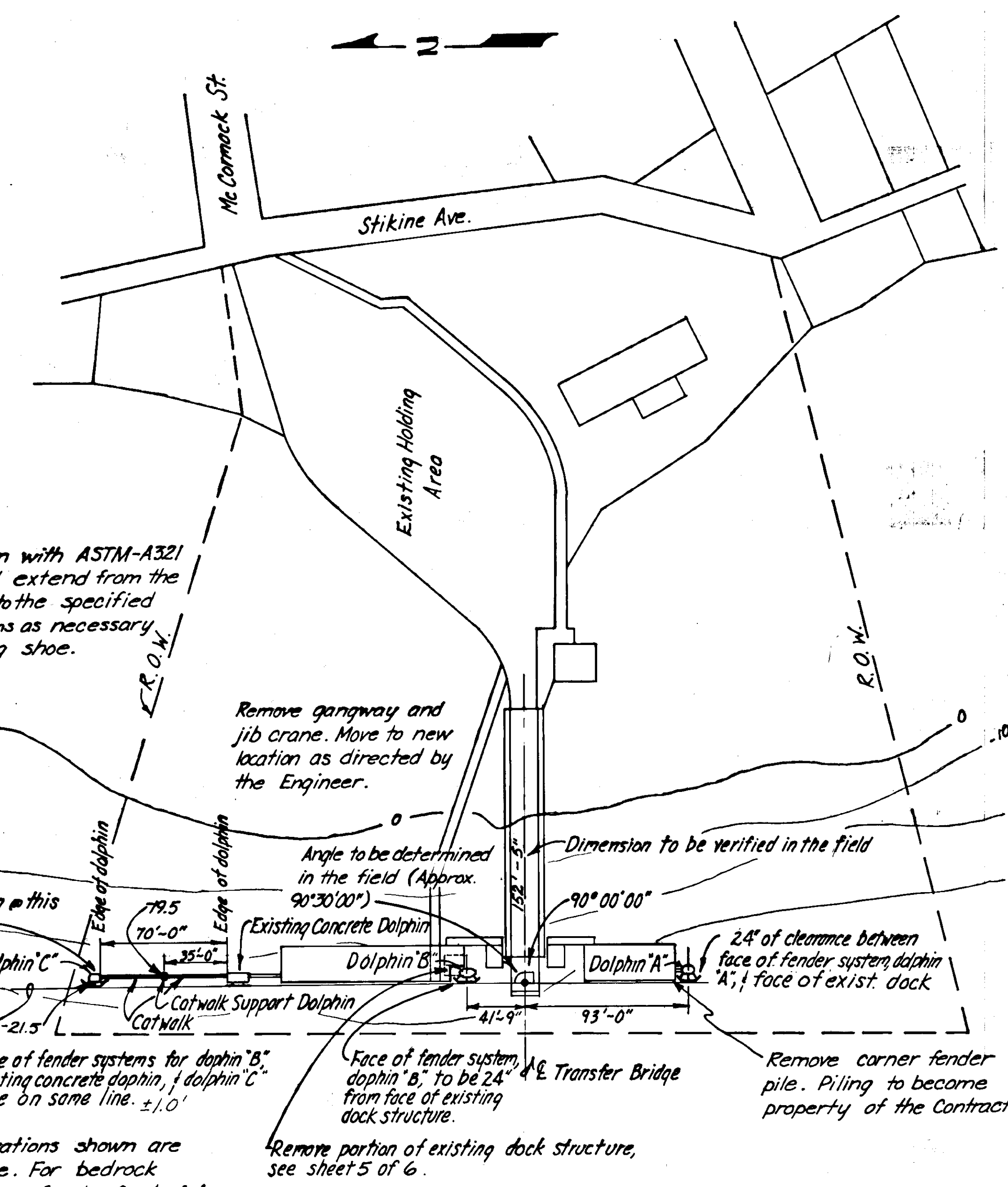
Remove gangway and jib crane. Move to new location as directed by the Engineer.

Angle to be determined in the field (Approx. 90°30'00")

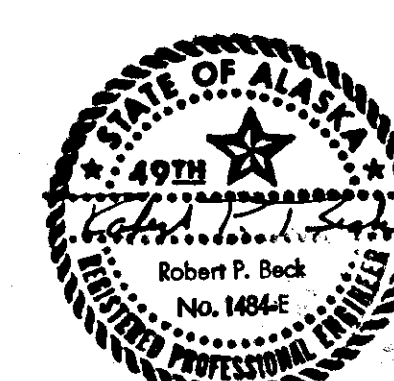
Face of fender system, dolphin "B", to be 24" ± Transfer Bridge from face of existing dock structure.

Remove portion of existing dock structure, see sheet 5 of 6.

Remove corner fender pile. Piling to become property of the Contractor.



WRANGELL TERMINAL LAYOUT
1" = 50.00'



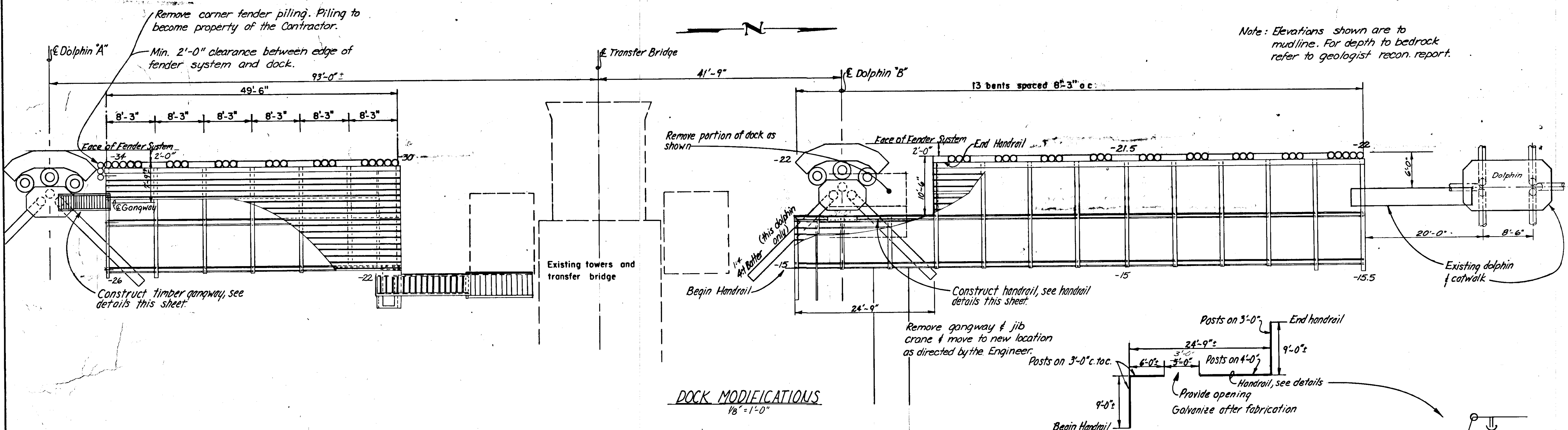
DO NOT SCALE THIS DRAWING - USE DIMENSIONS

STATE OF ALASKA
DEPARTMENT OF PUBLIC WORKS
DIVISION OF WATER AND HARBORS

CONSTRUCTION LAYOUT, PILE ANCHORAGE,
& MISCELLANEOUS DETAILS

SCALE: As noted	SURVEYED: JAL	APPROVED: Don Statter
DESIGNED: JAL	DRAWN: JAL	DIRECTOR
CHECKED: JAL	DATE: 3/9/77	
PROJECT NUMBER: RS-0943 (14)	SHEET 4 OF 6	

Note: Elevations shown are to mudline. For depth to bedrock refer to geologist recon report.

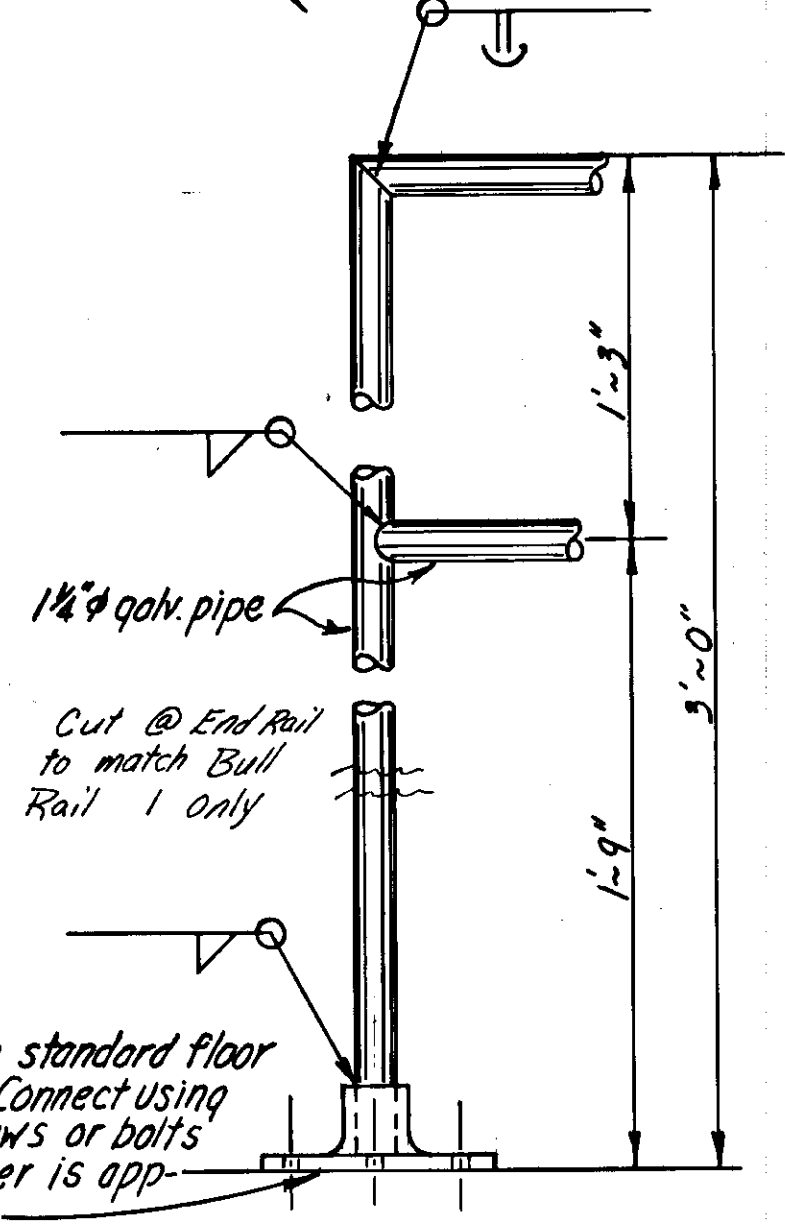
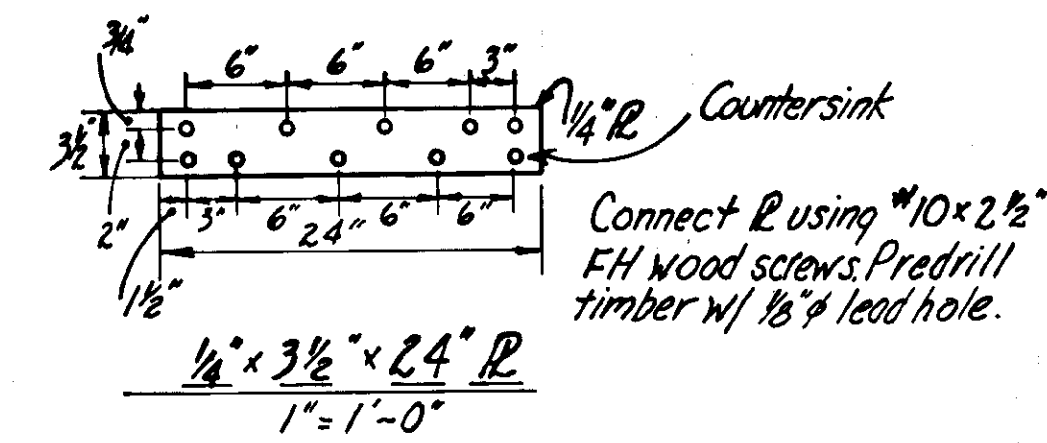


DOCK MODIFICATIONS
1/8" = 1'-0"

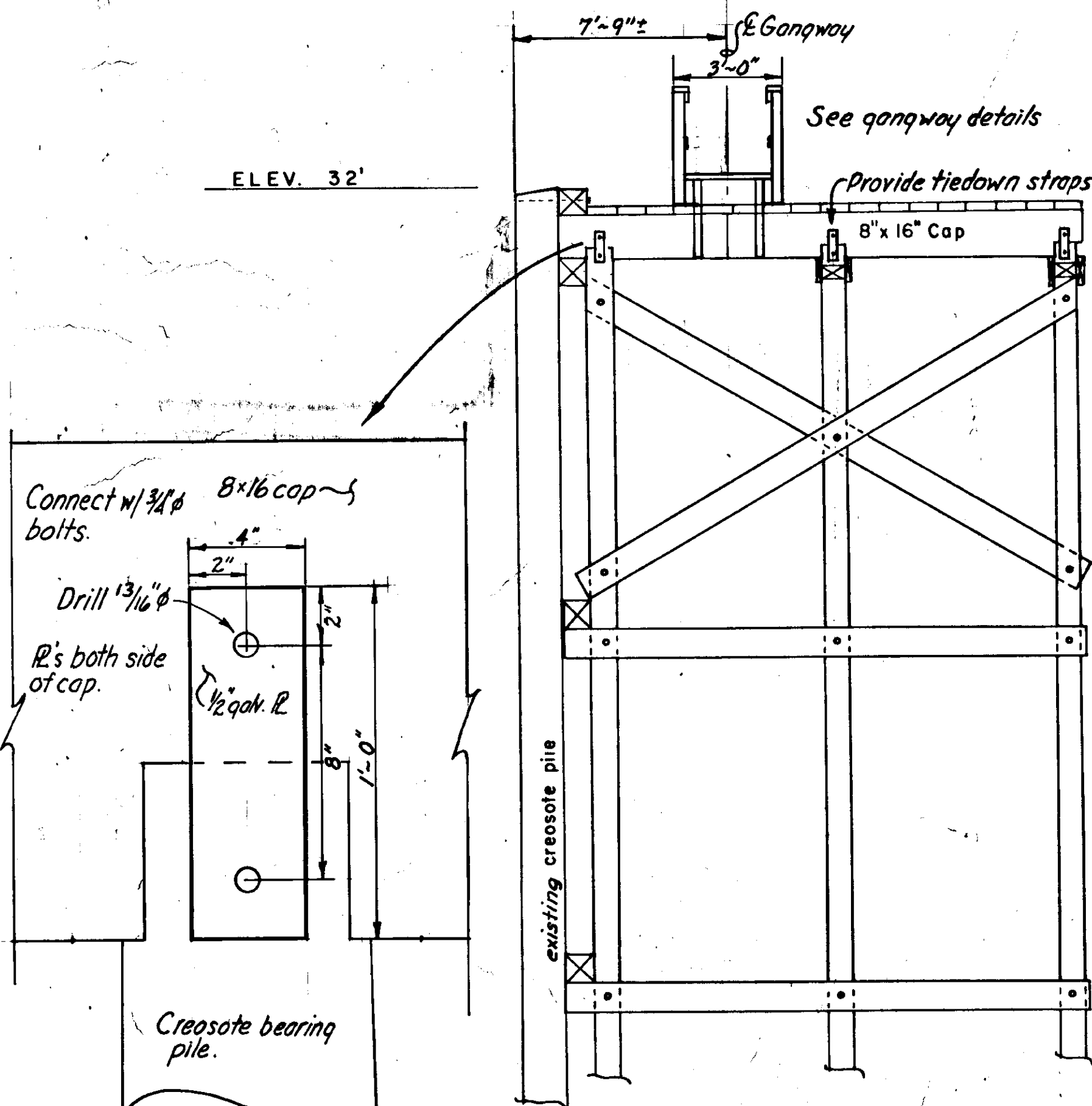
HANDRAIL LAYOUT
1/8" = 1'-0"

Notes:

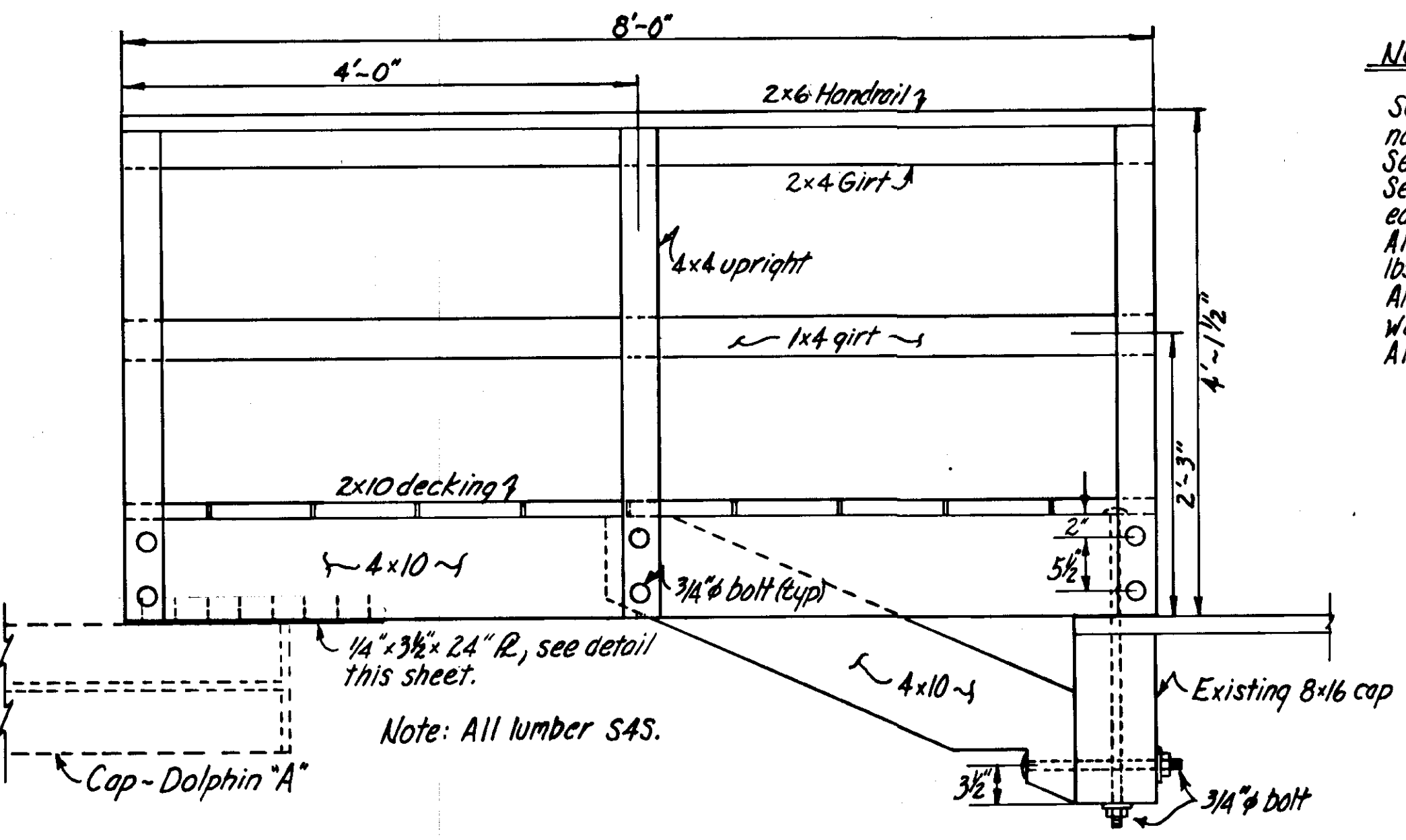
Secure 2x6 handrail & 2x4 girt using 2-20d galv box nails each contact.
 Secure 1x4 girt using 2-16d galv box nails each contact.
 Secure 2x10 decking w/ 2-30d galv box nails each plank each side.
 All timber to be treated w/ pentachlorophenol to 0.60 lbs. ret. in conformance w/ ANPB LP-33.
 All bolts to be of the economy type head. A malleable washer shall be placed between all nut & wood surfaces.
 All bolts & miscellaneous hardware to be galvanized



HANDRAIL DETAILS
3" = 1'-0"



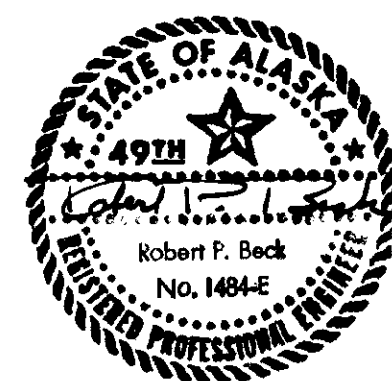
TYPICAL EXISTING BENT
SCALE 1/4" = 1'-0"

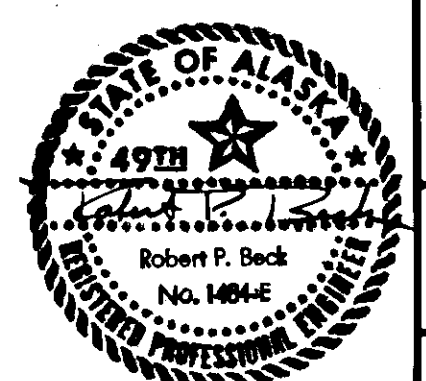
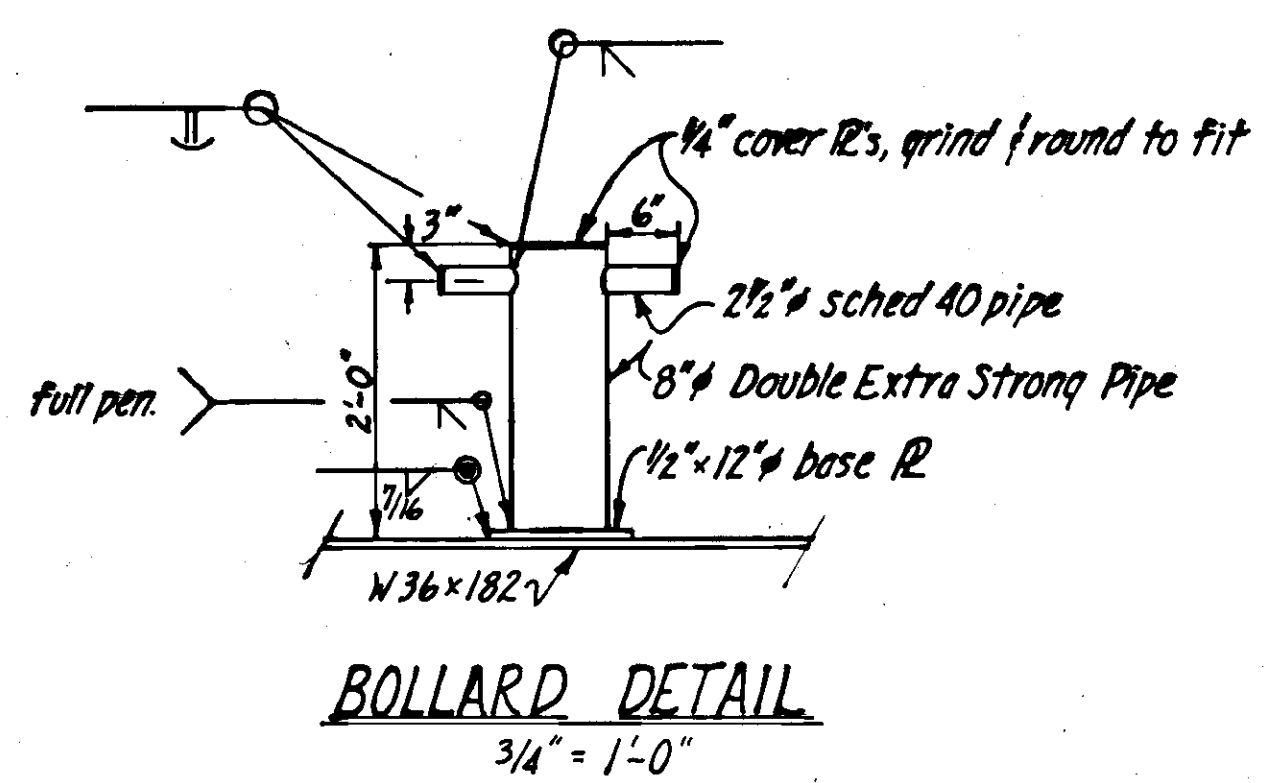
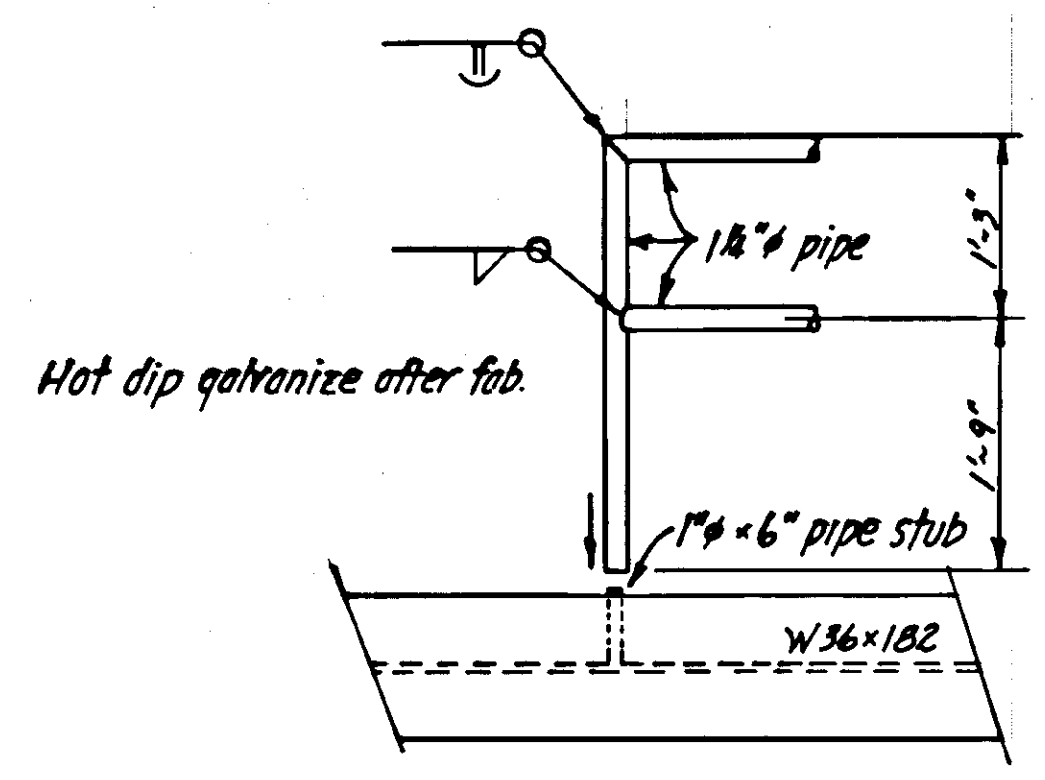
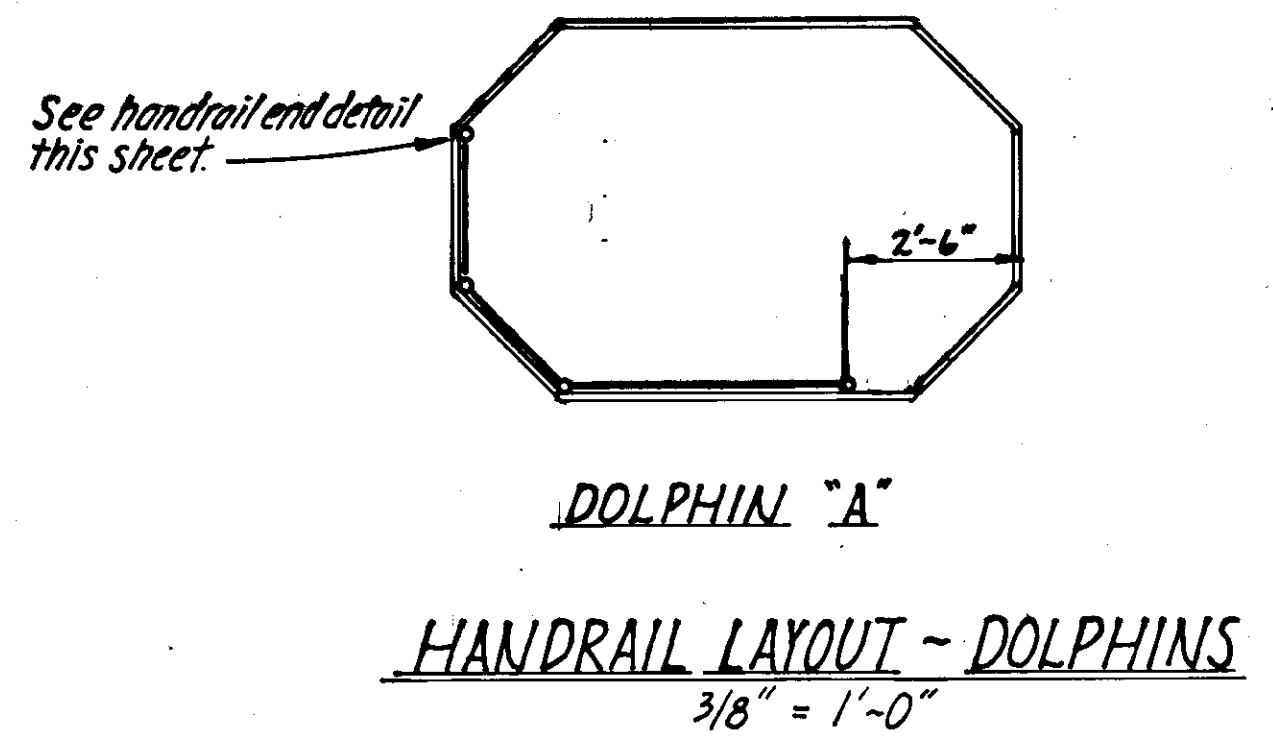
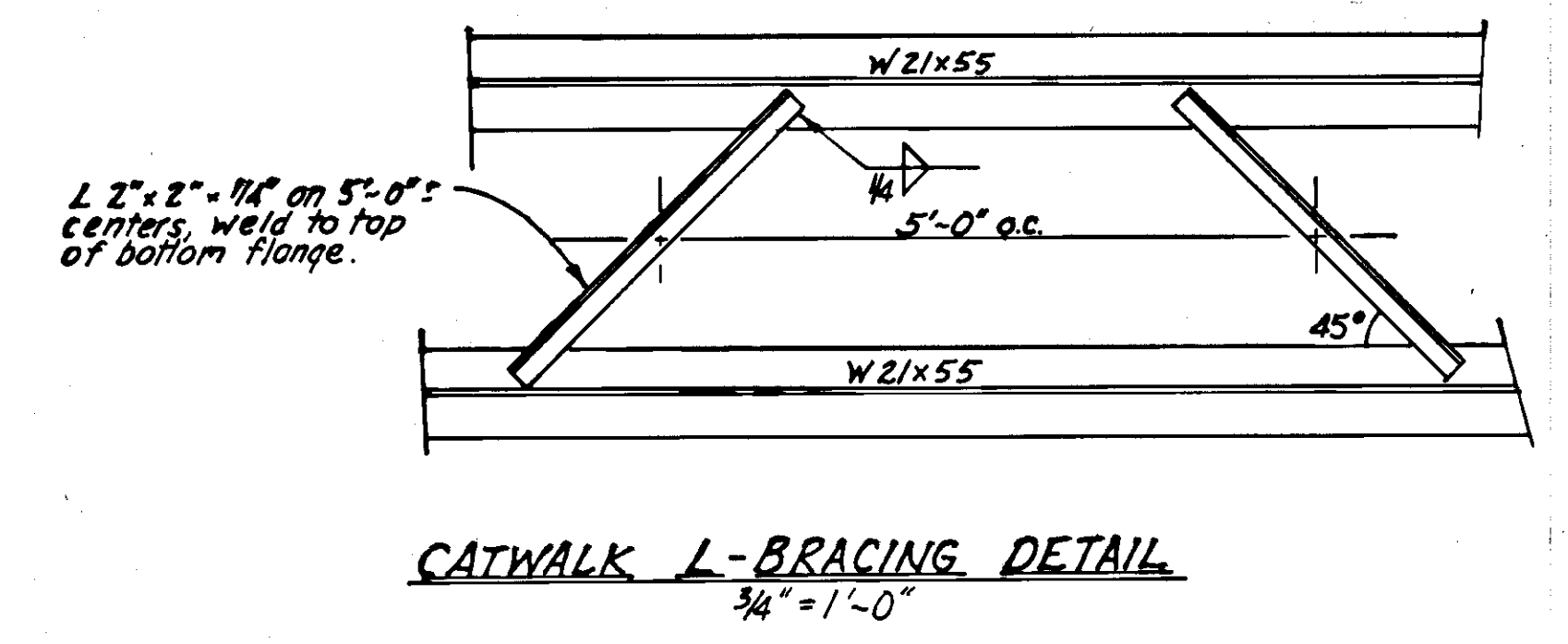
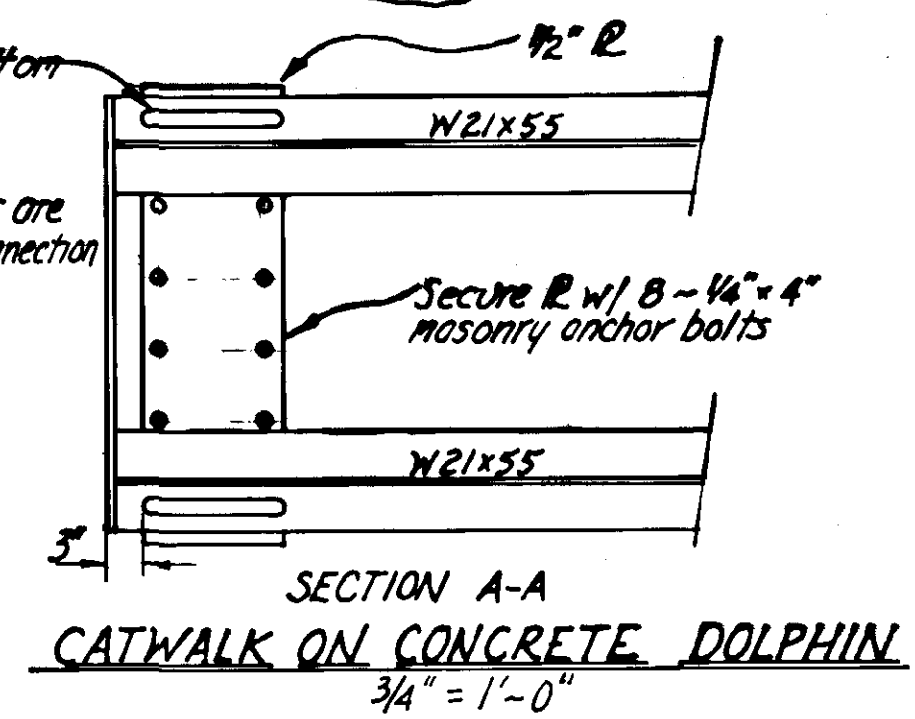
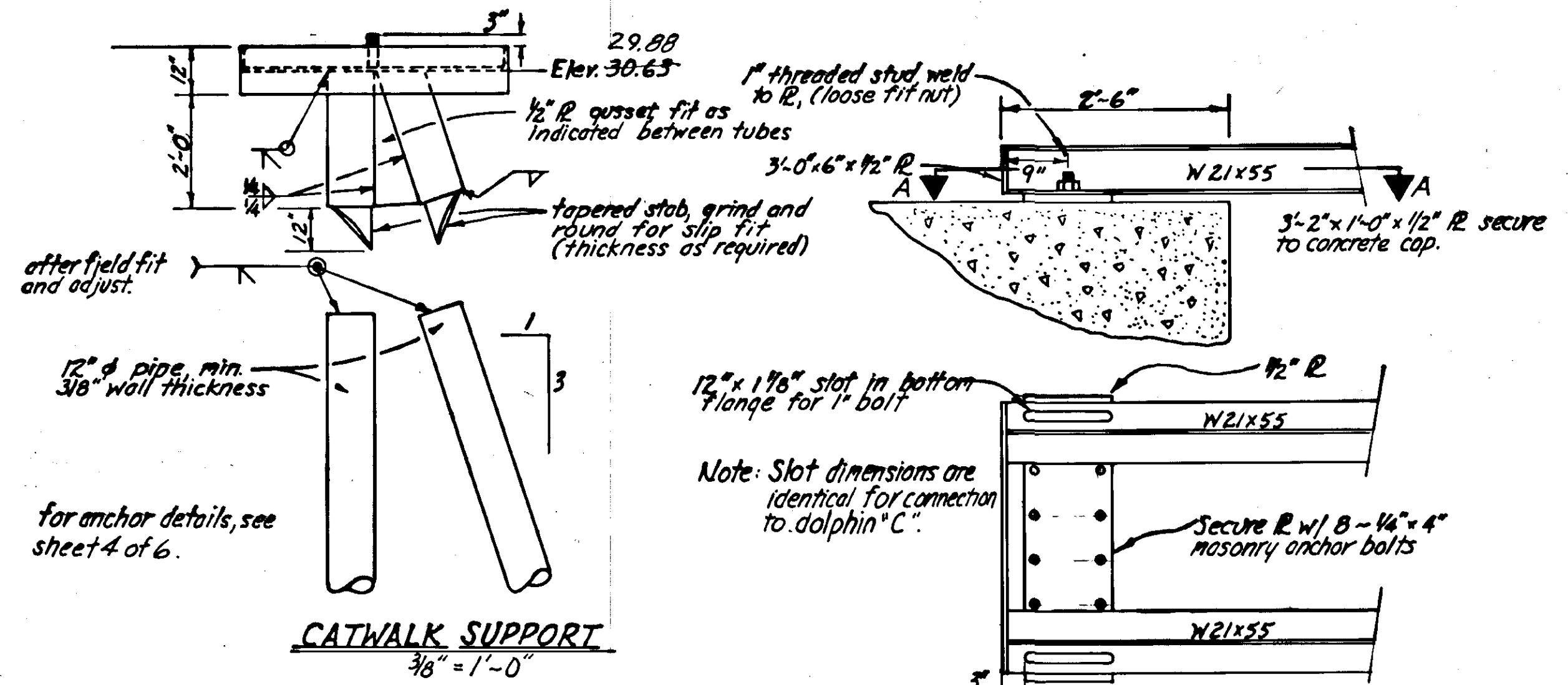
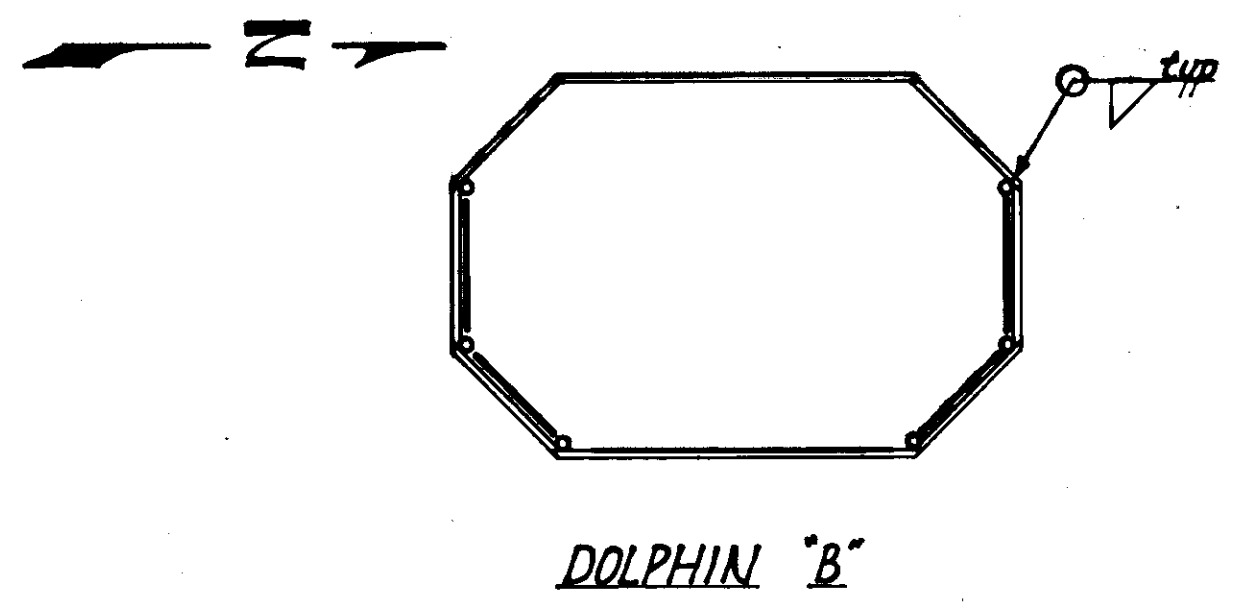
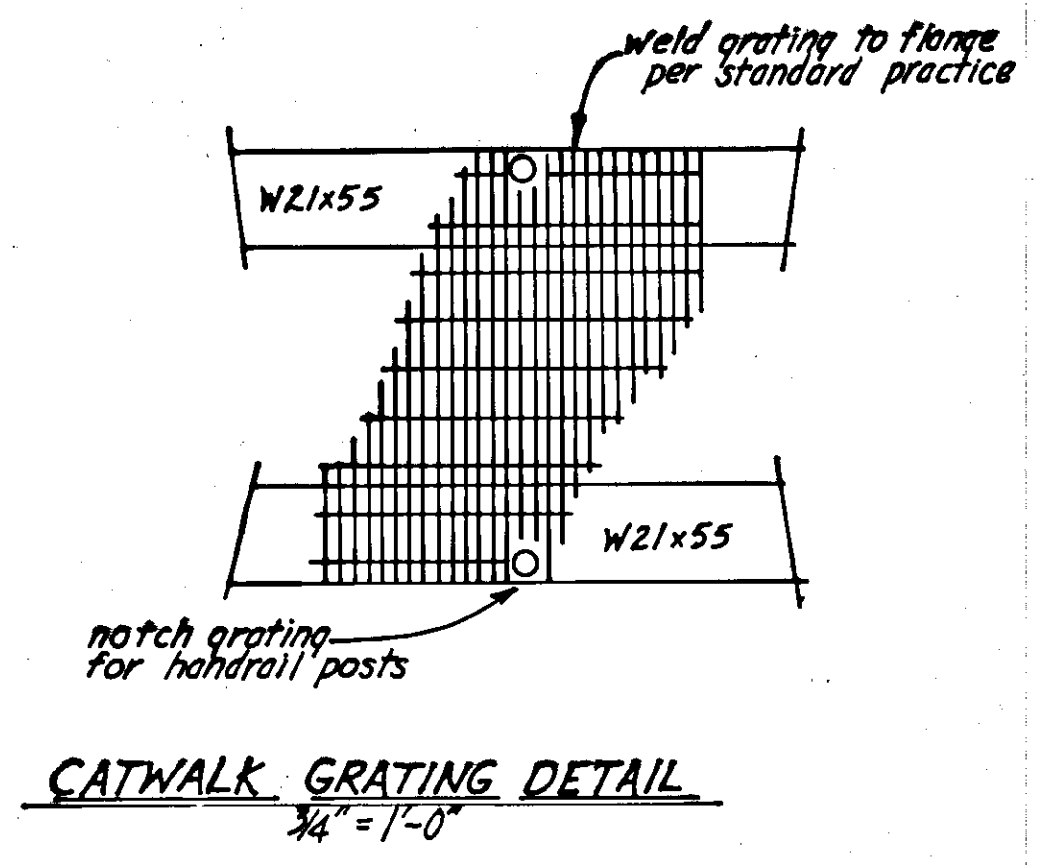
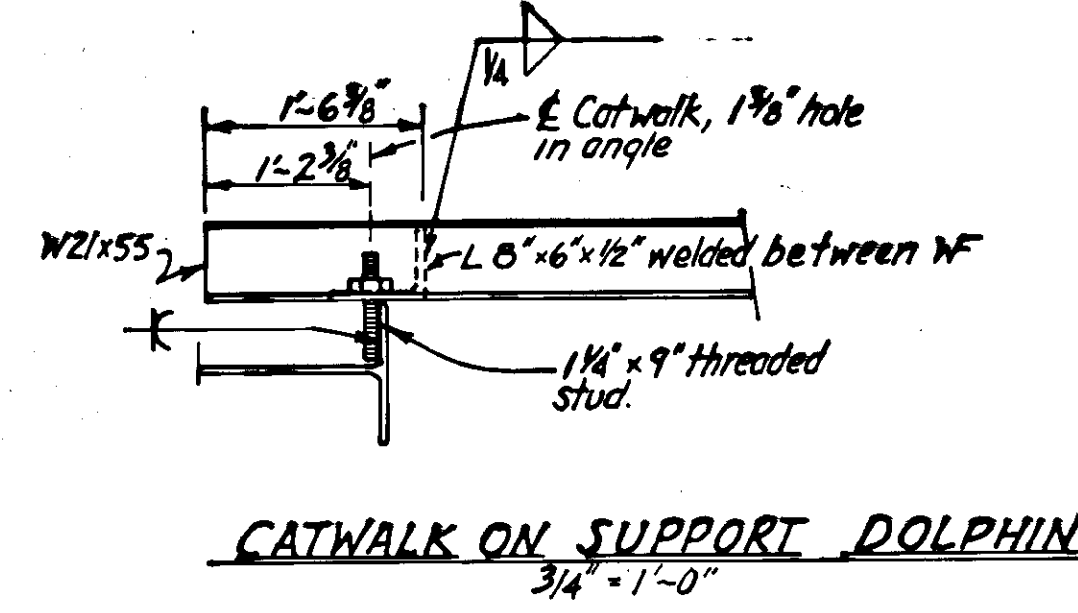
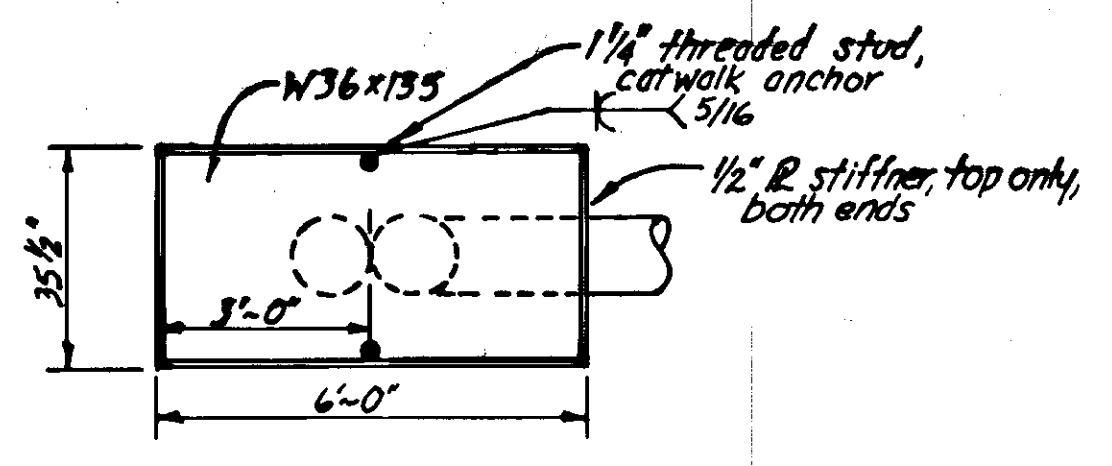
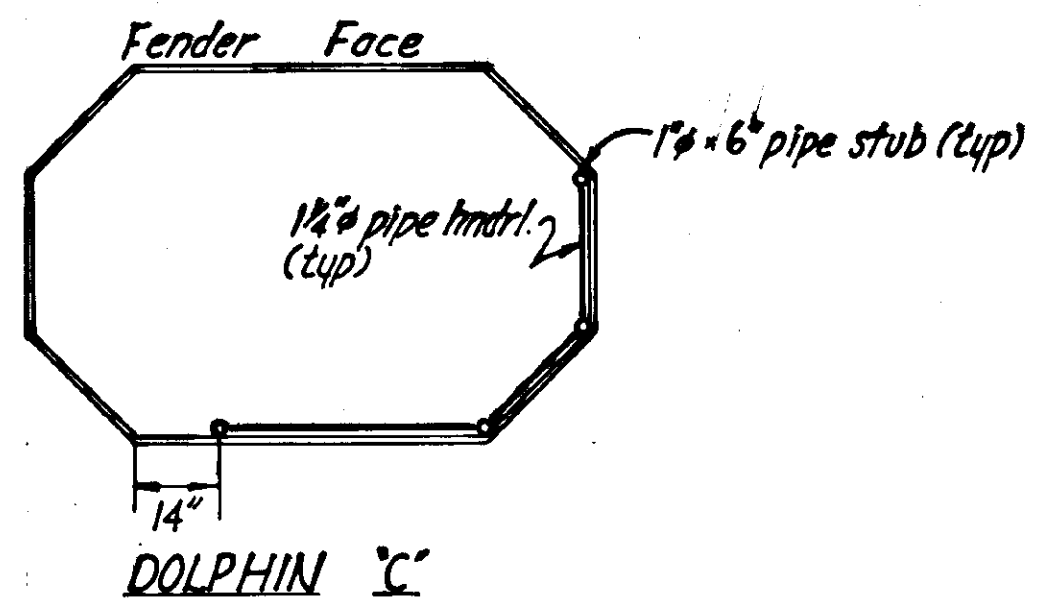
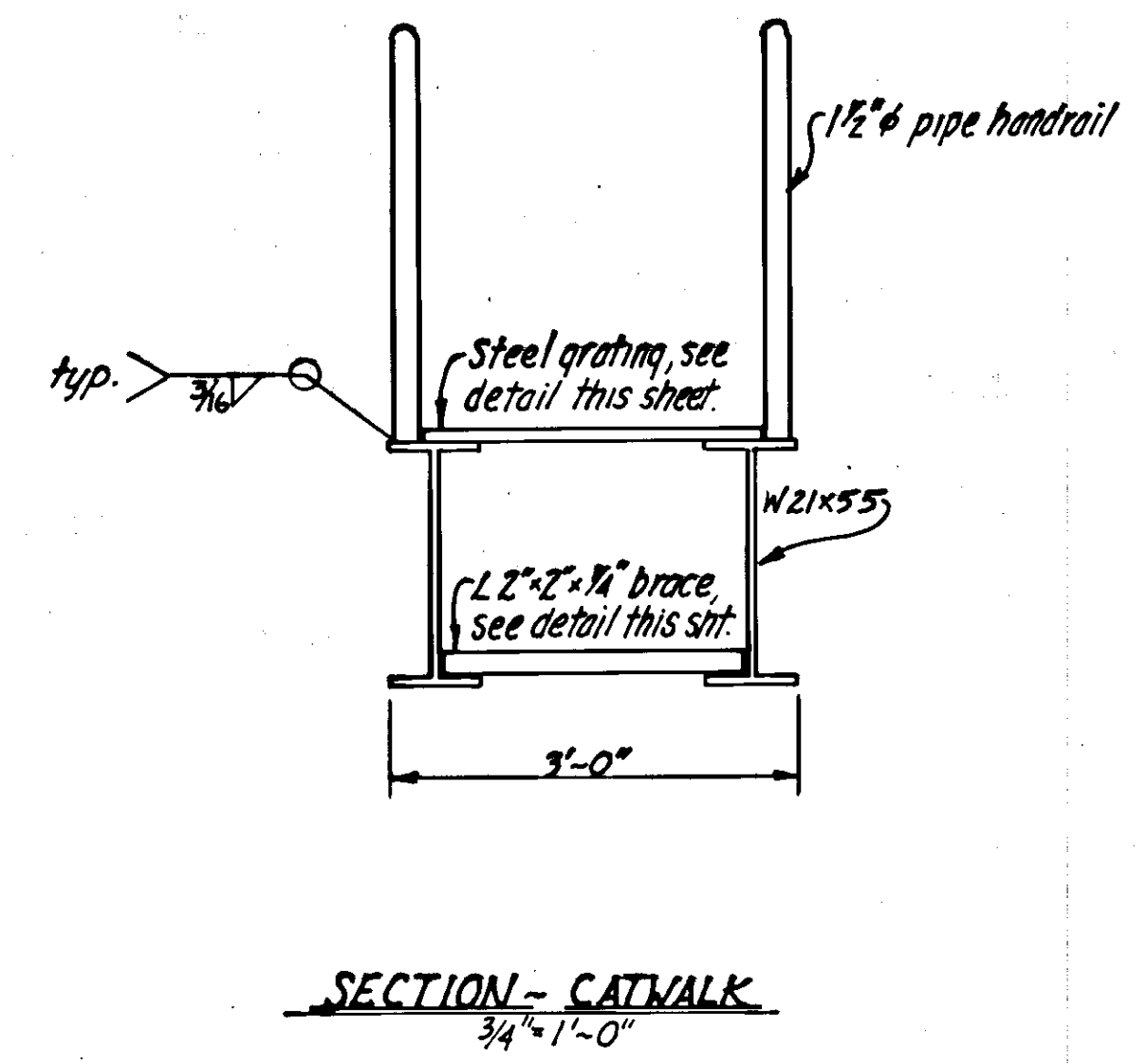
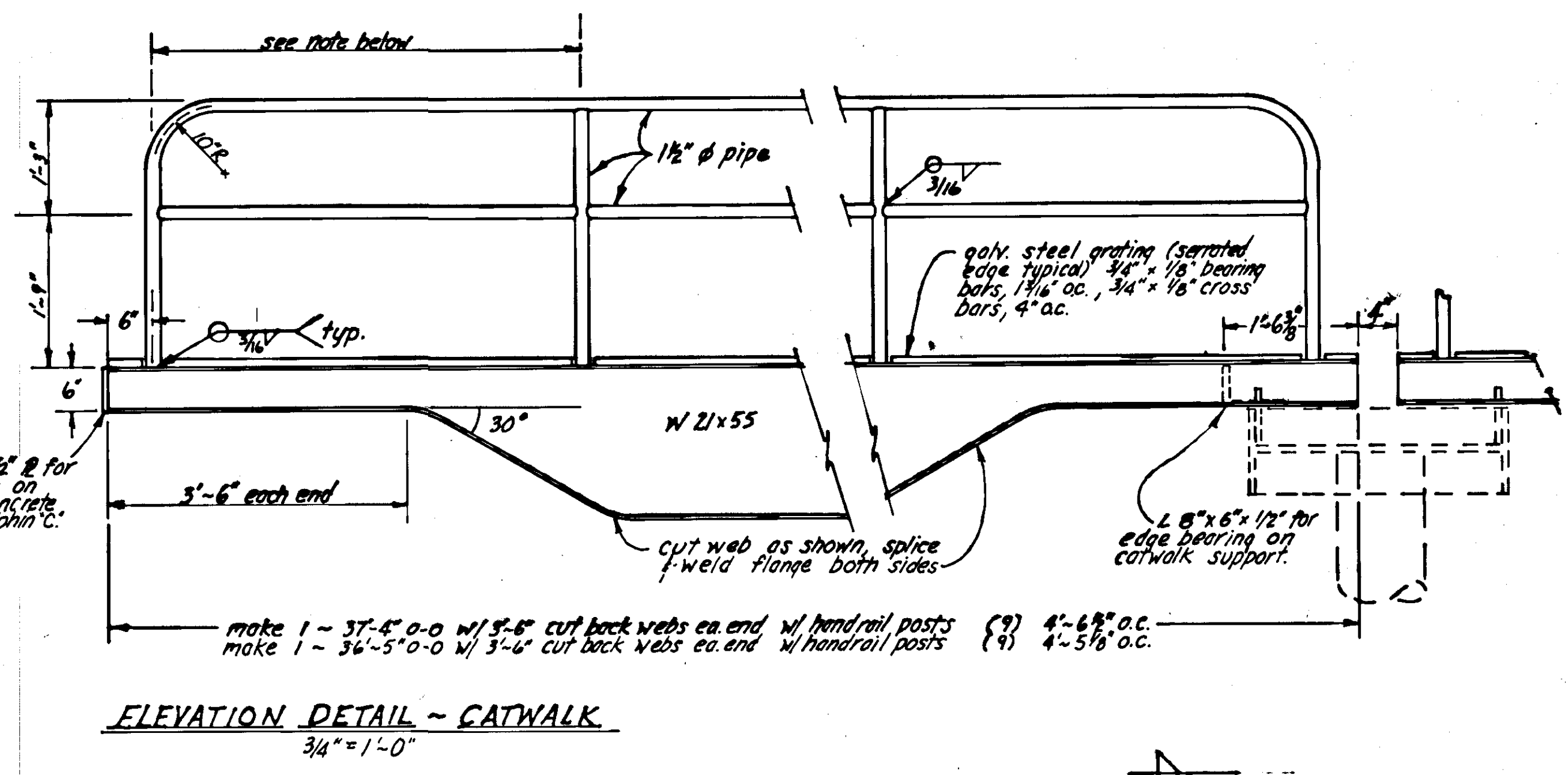
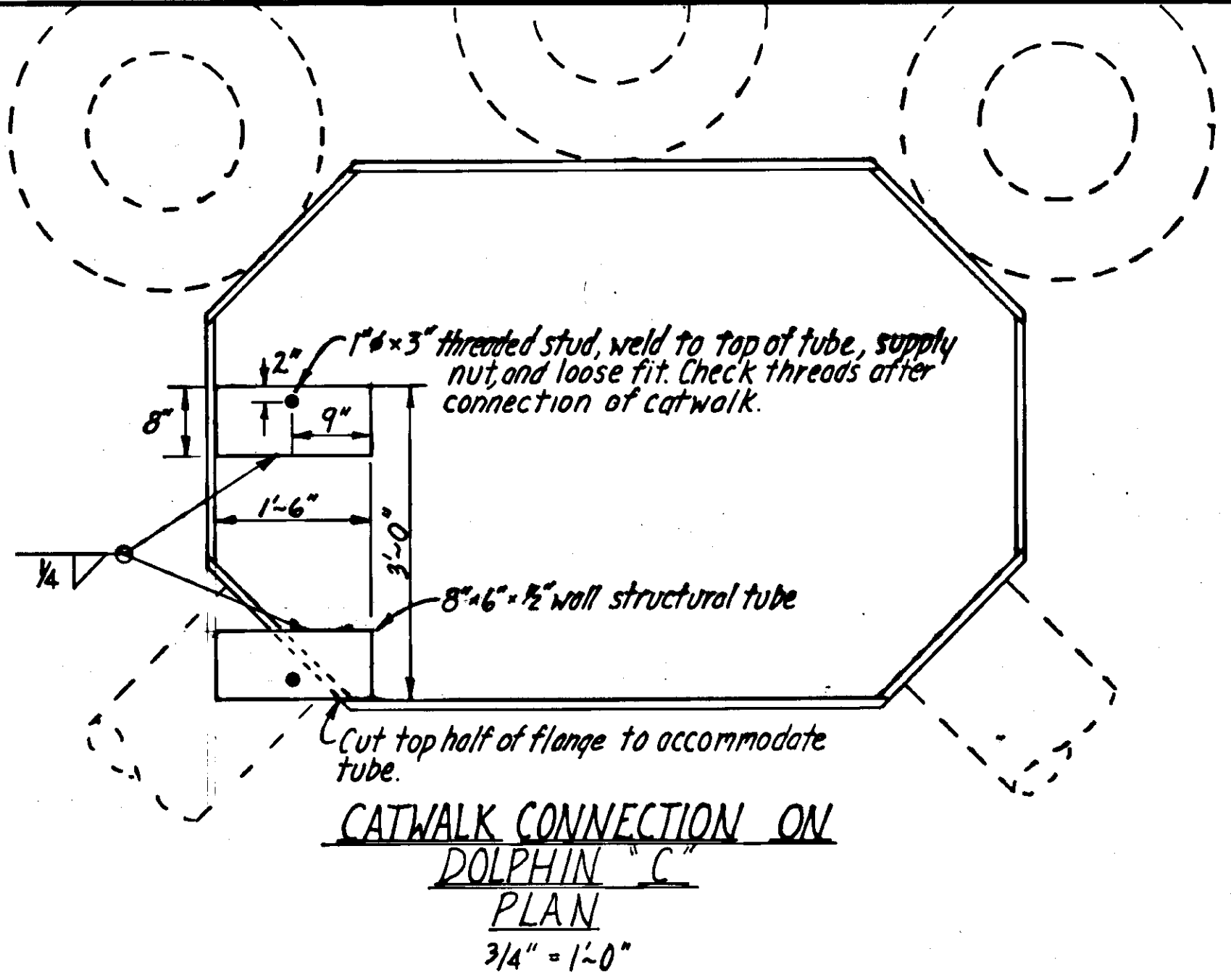


TIMBER GANGWAY DETAILS
1" = 1'-0"

TIEDOWN STRAPS
3" = 1'-0"

STATE OF ALASKA DEPARTMENT OF PUBLIC WORKS DIVISION OF WATER AND HARBORS		
DOCK MODIFICATION, HANDRAIL LAYOUT & MISC. CONSTR. DETAILS		
SCALE As shown	DATE 3/11/77	APPROVED Don Statter DIRECTOR
PROJ. NO. RS-0943/14	DESIGNED BY JAL	DRAWN BY JAL
SHEET 5 OF 6		CHECKED BY





DO NOT SCALE THIS DRAWING - USE DIMENSIONS		
STATE OF ALASKA DEPARTMENT OF PUBLIC WORKS DIVISION OF WATER AND HARBORS		
CATWALK, HANDRAIL & MISC. DETAILS		
SCALE: As noted	SURVEYED: _____	APPROVED: _____
DESIGNED: JAL/DN	DRAWN: JAL	DATE: 3/3/77
CHECKED: _____	PROJECT NUMBER: RS-0943 (14)	SHEET 6 OF 6