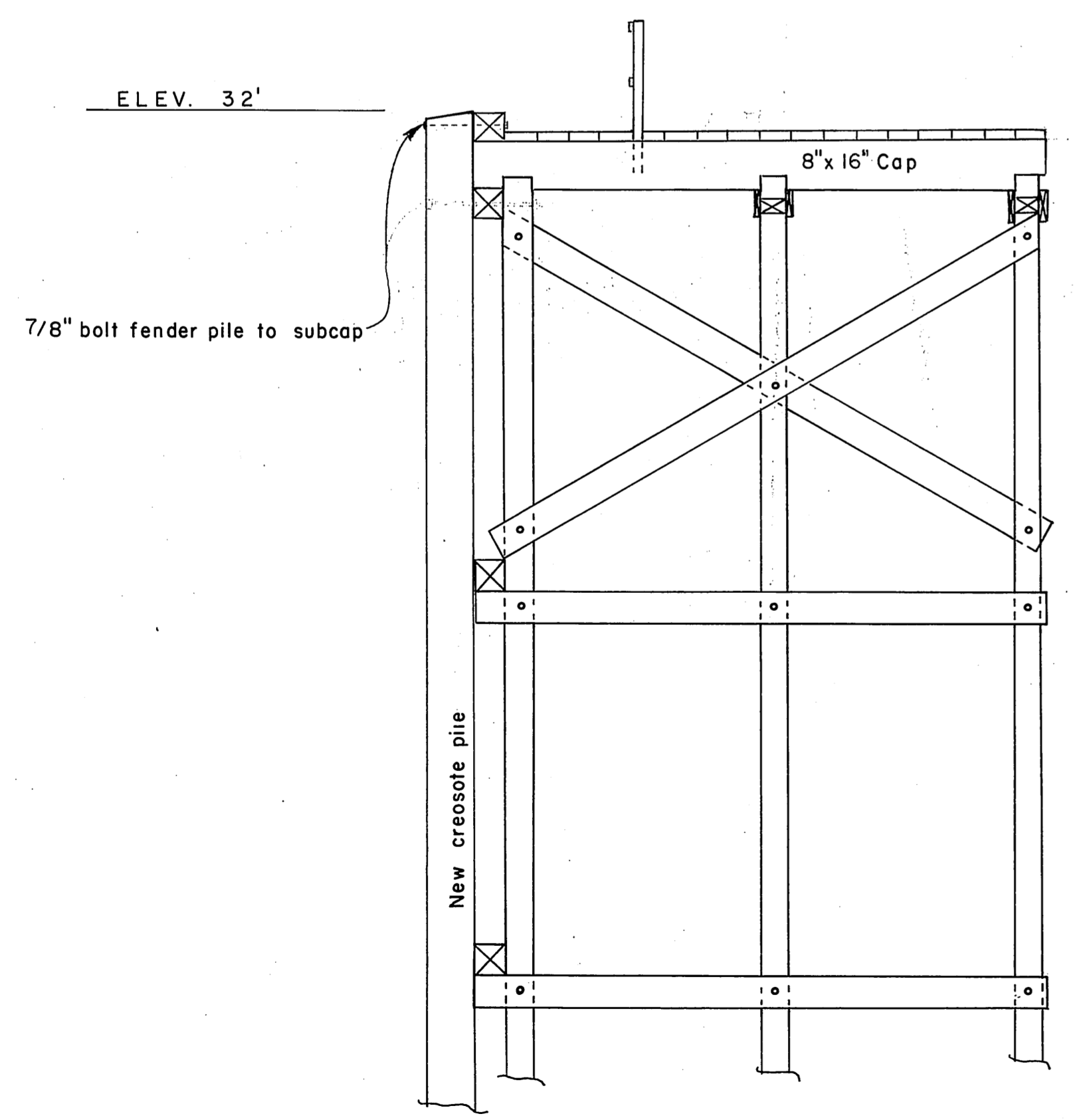
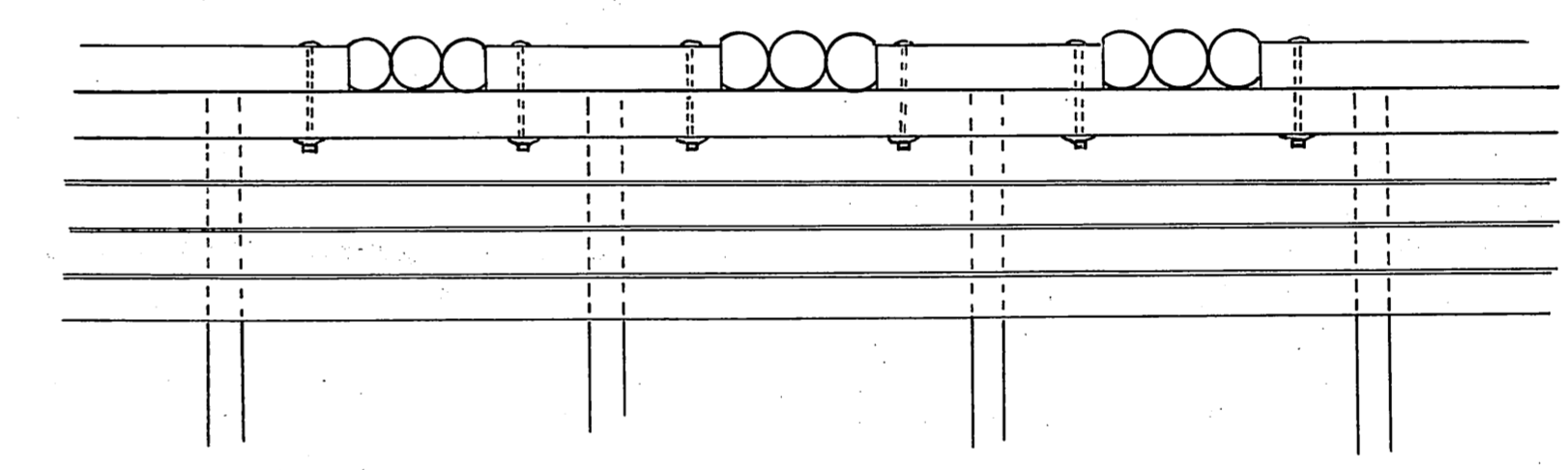
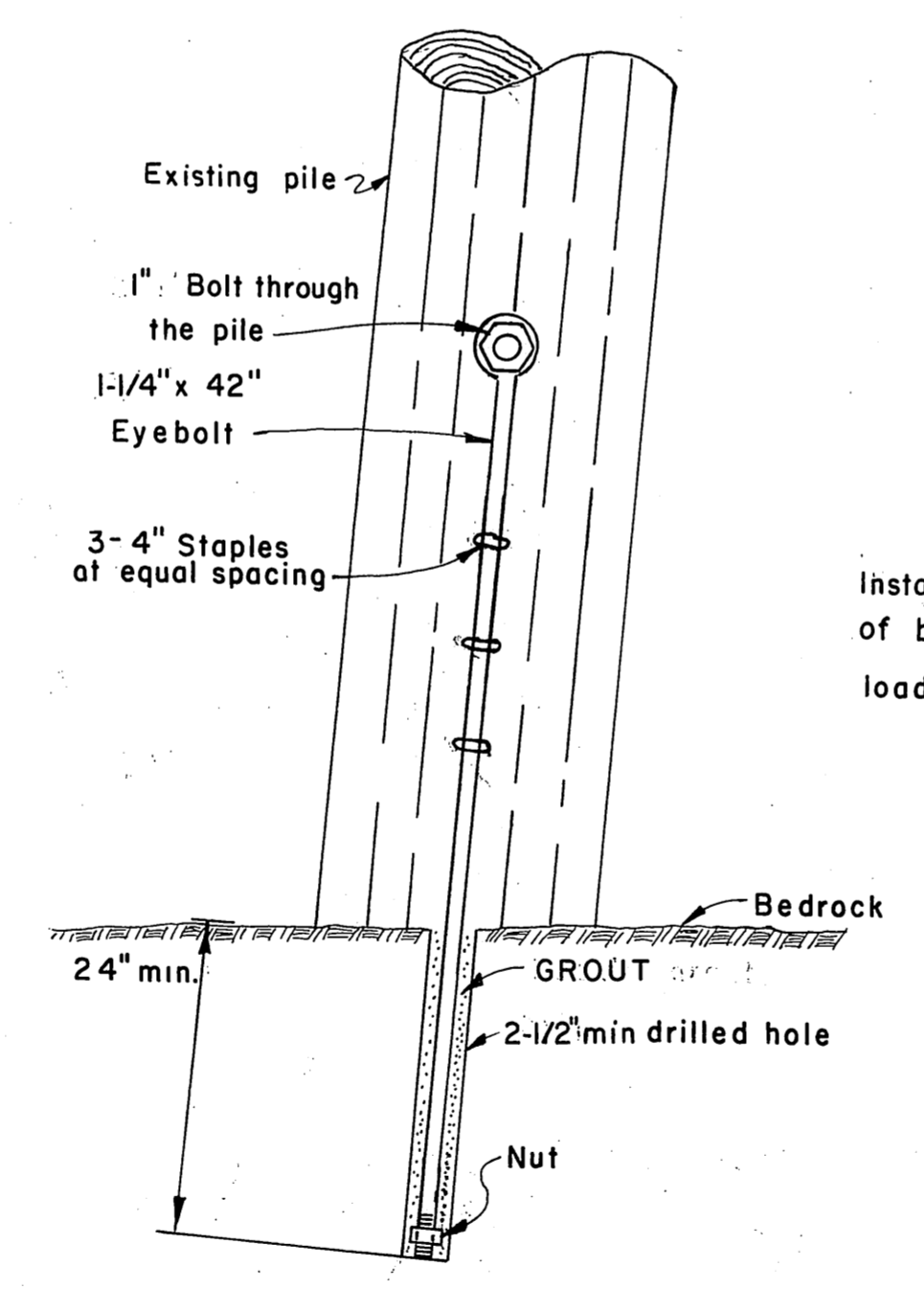


PLAN
SCALE 1/8" = 1'-0"



TYPICAL EXISTING BENT
SCALE 1/4" = 1'-0"



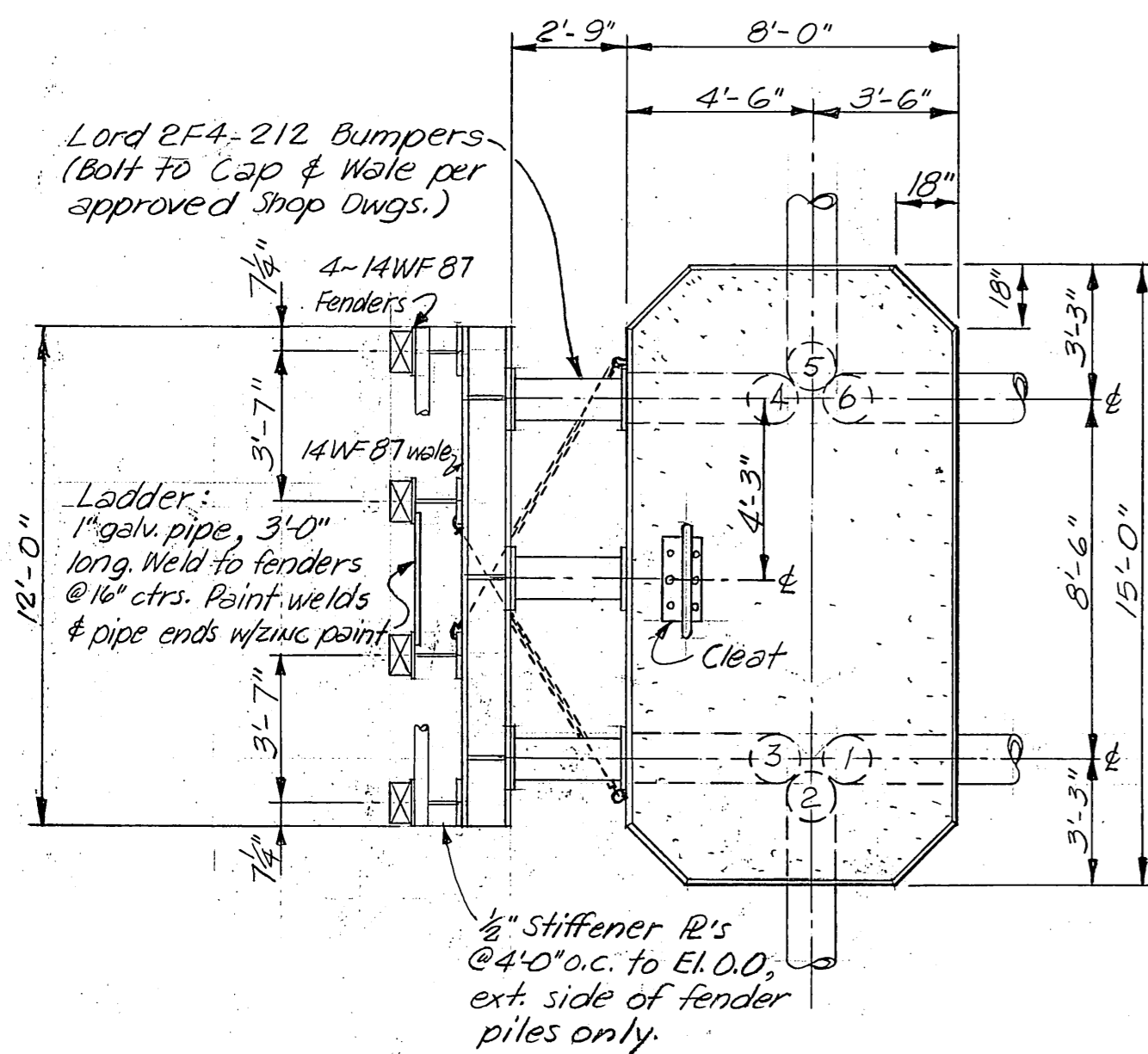
DETAIL
PILING ANCHOR

Install pile anchor bolts on both piles of bents 3-4 and 5 of the passenger loading approach

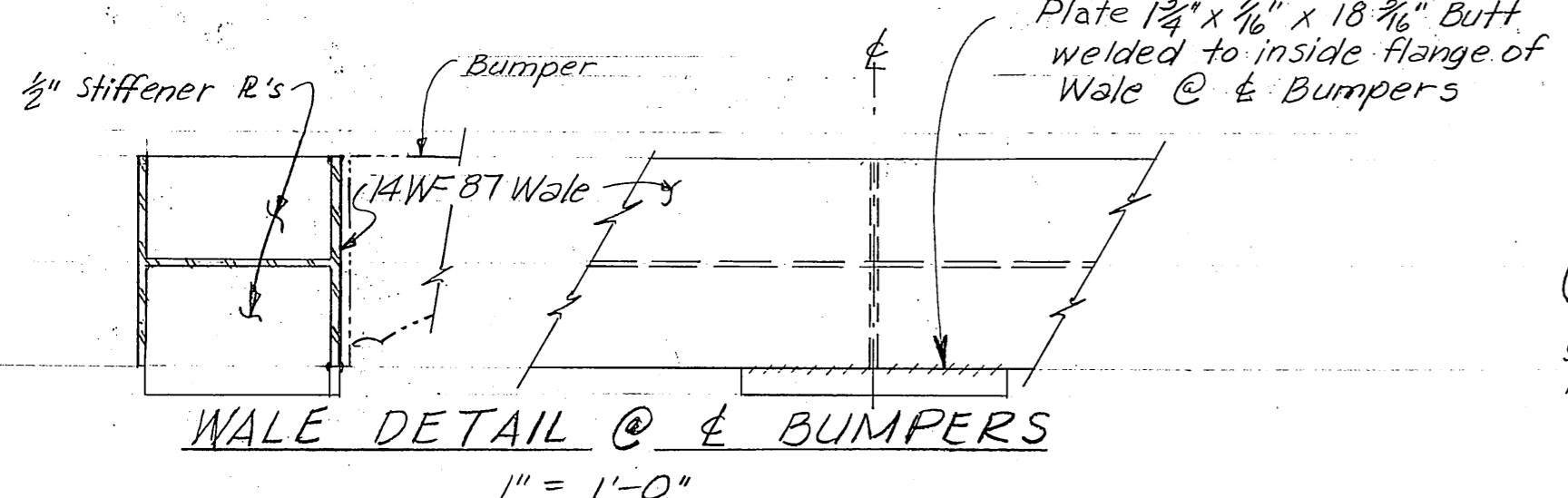
As Constructed

NO.	REVISION	BY	
STATE OF ALASKA DEPARTMENT OF PUBLIC WORKS DIVISION OF WATER AND HARBORS			
DOCK REPAIRS WRANGELL FERRY TERMINAL			
SCALE	As shown	APPROVED	Don Statter DIRECTOR
DATE	9-25-70	CHECKED BY	DSM
PROJ. NO.	MT-125	DRAWN BY	WO
SURVEYED BY DSM			

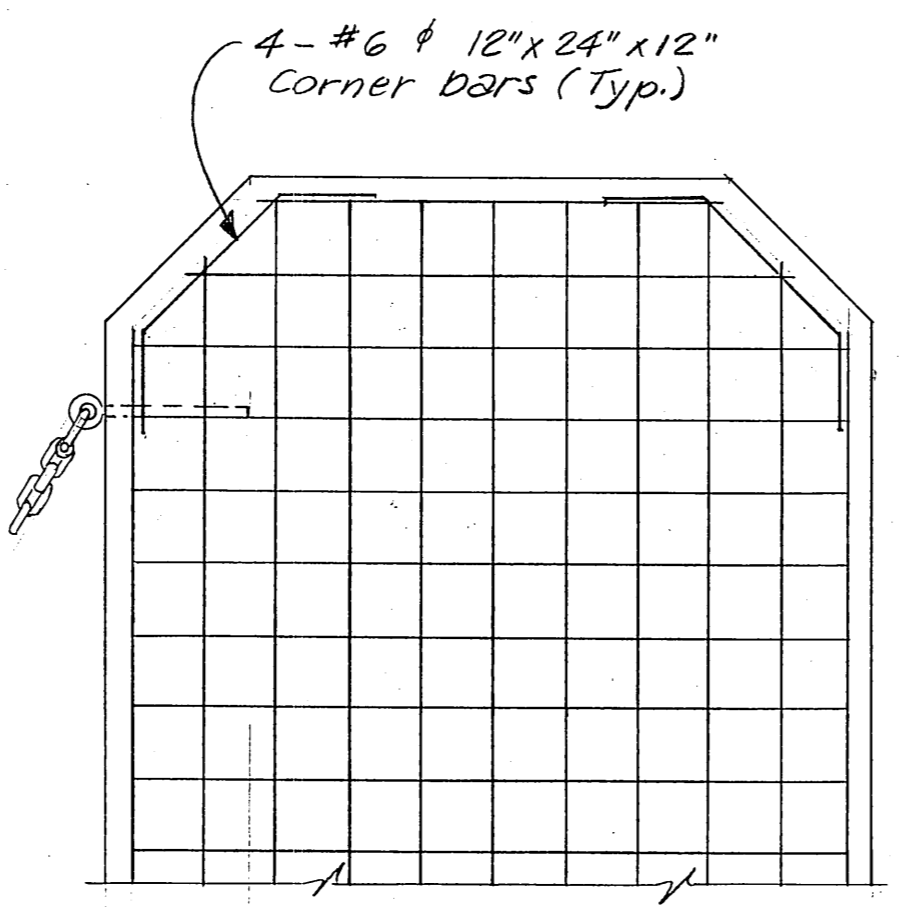
SHEET 1 OF 2



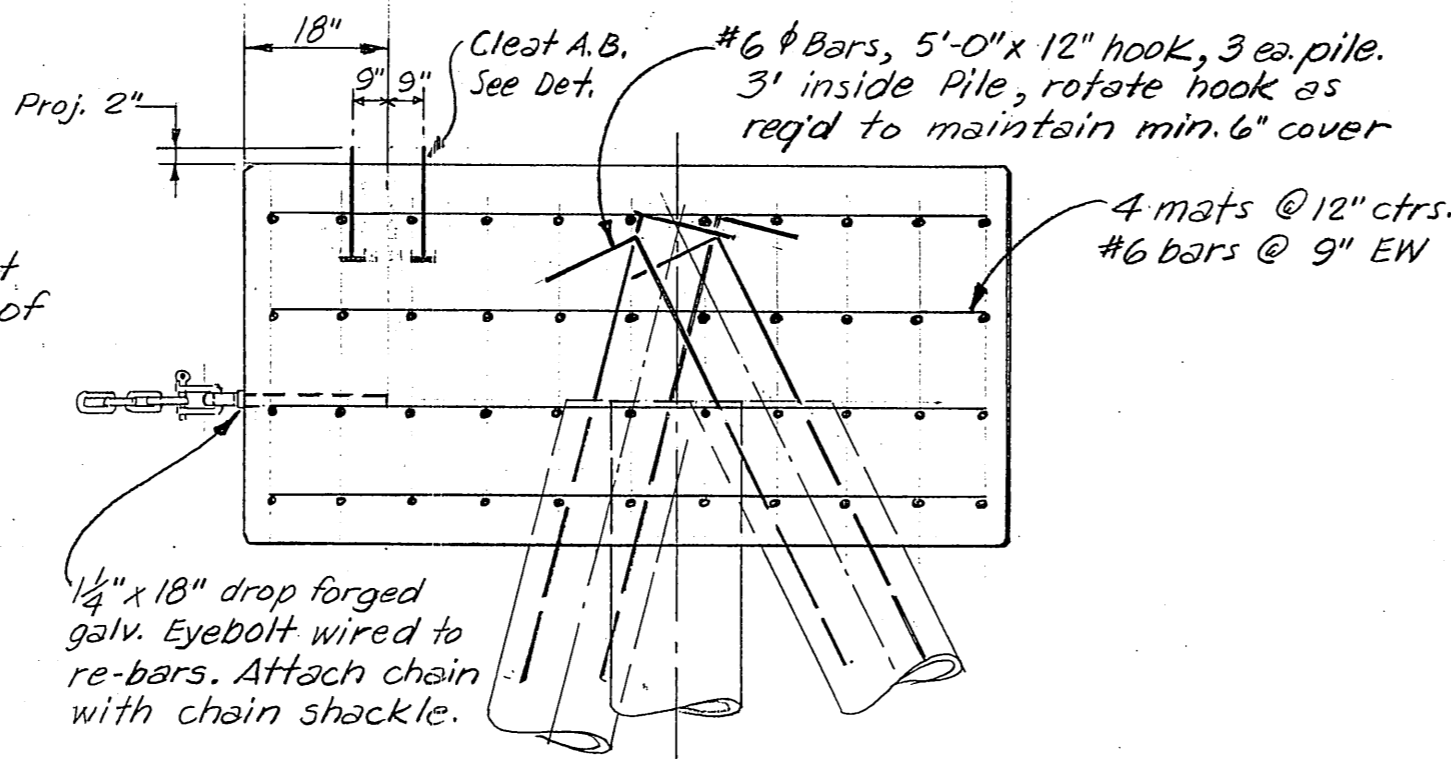
PLAN



WALE DETAIL @ BUMPERS



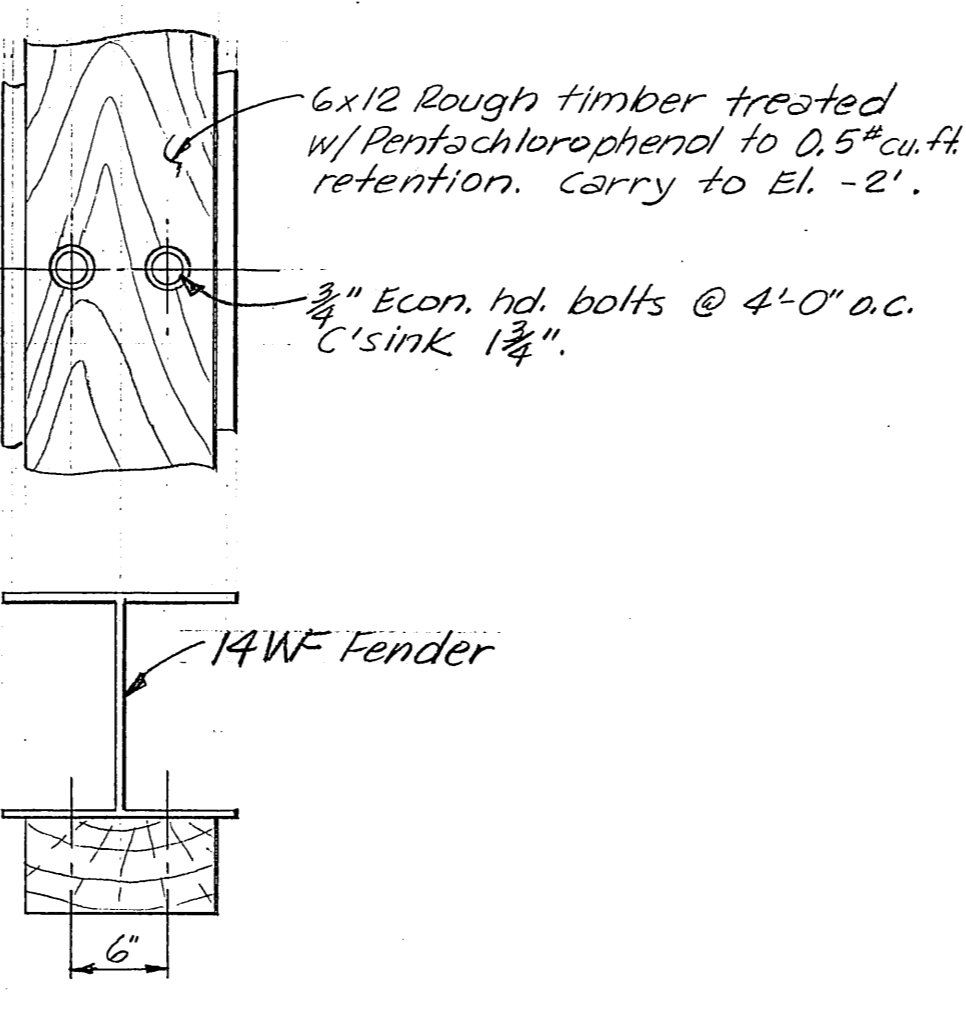
DOLPHIN CAP PLAN



CAP ELEVATION

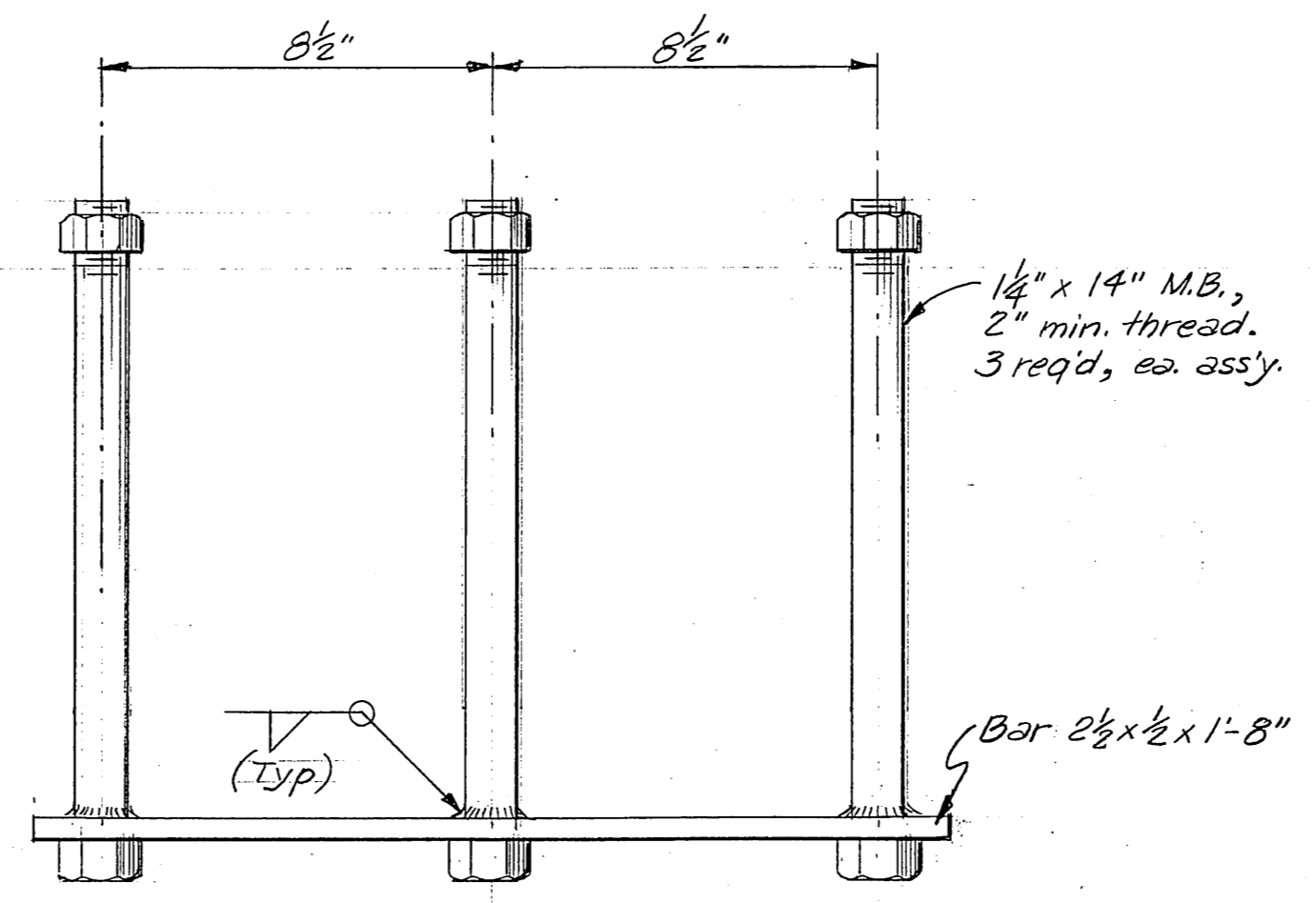
REINFORCING DETAILS

1/2" = 1'-0"



RUB STRIP DETAIL

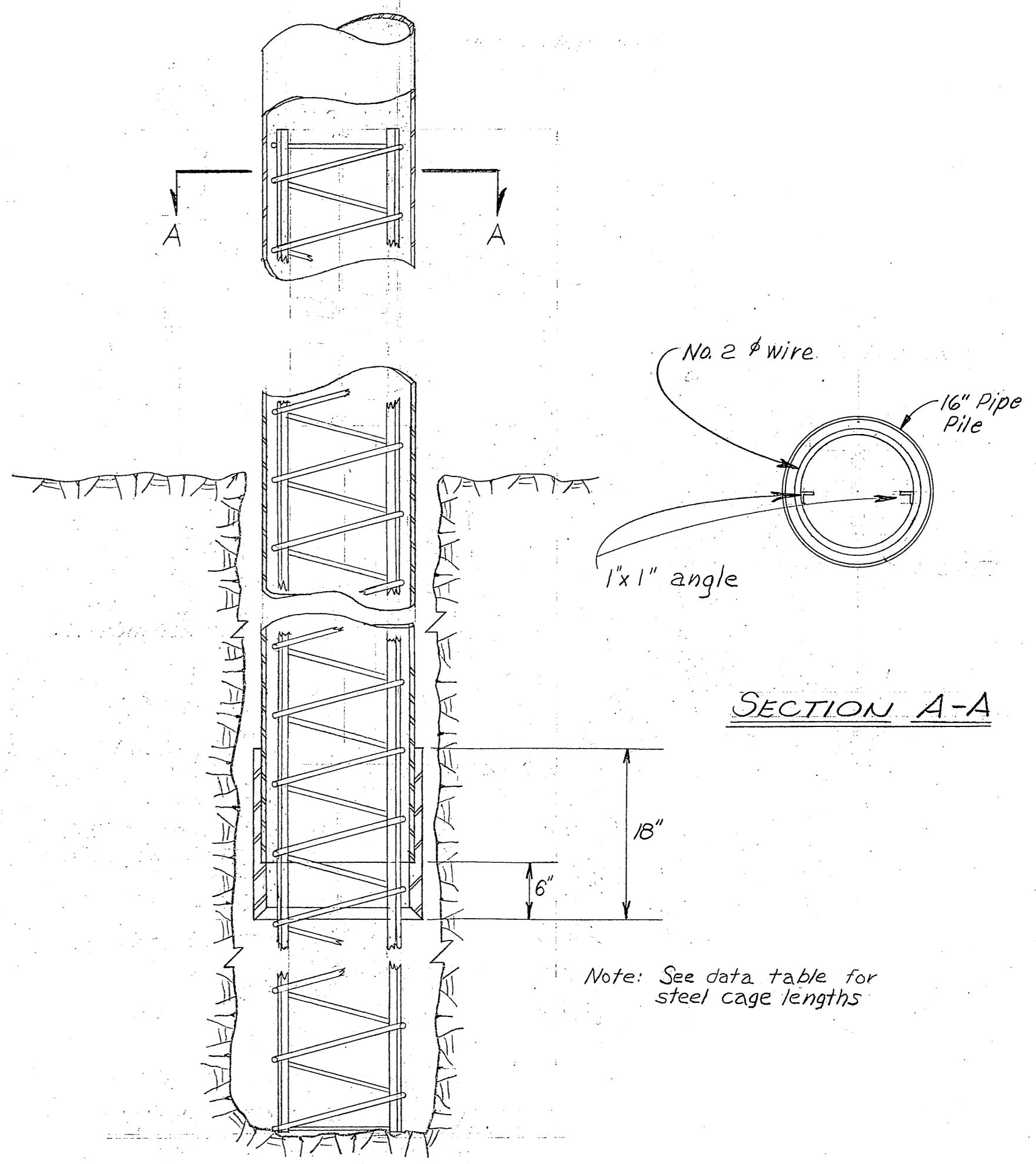
1" = 1'-0"



MOORING CLEAT ANCHOR BOLT ASSEMBLY

2 REQ'D

3" = 1'-0"

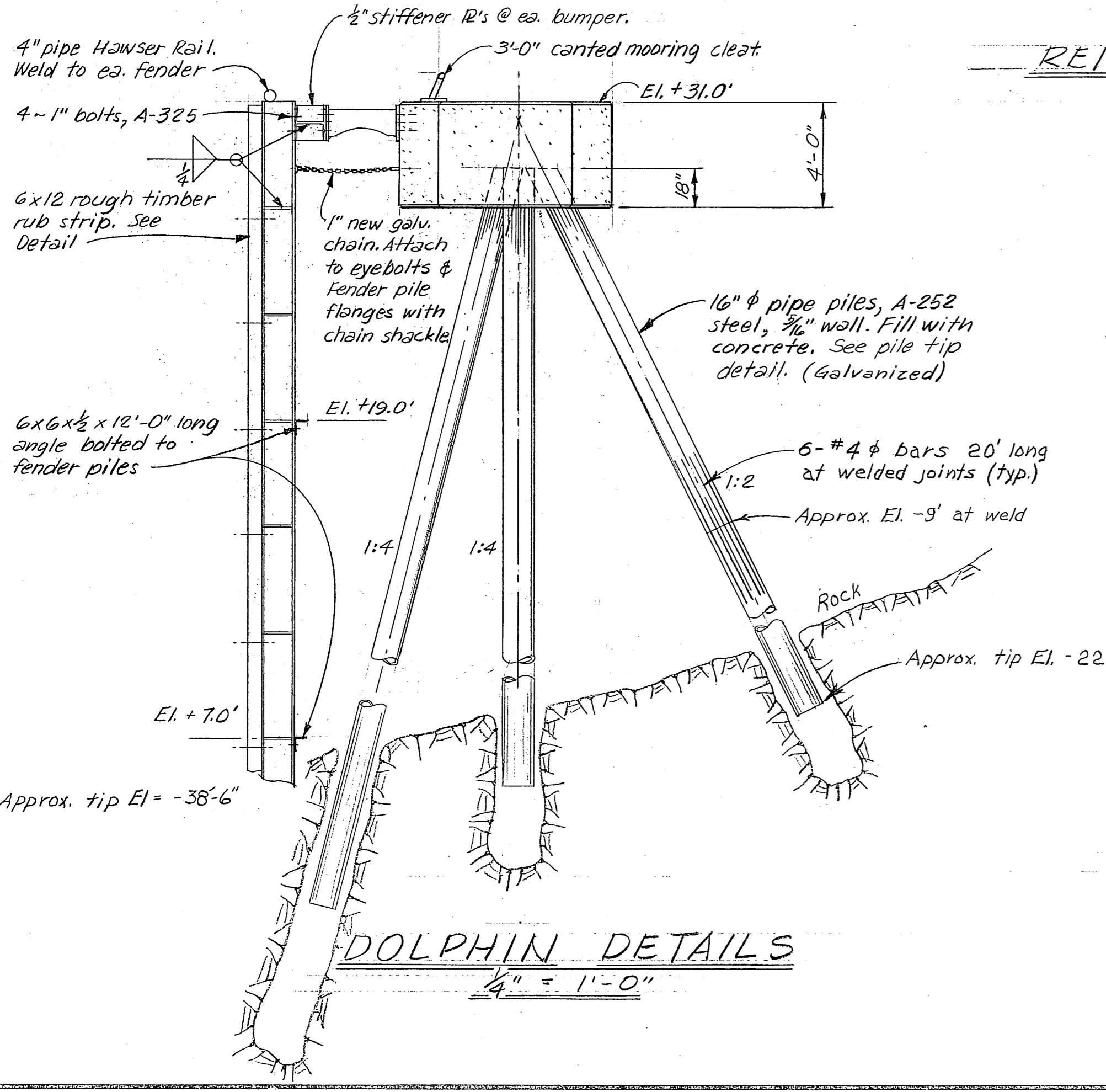


SECTION A-A

PIPE PILE TIP DETAIL

1" = 1'-0"

Note: See data table for steel cage lengths



DOLPHIN DETAILS

1/4" = 1'-0"

Pile No.	Overburd.	Rock Penetration Pile	Rock Penetration Hole	Length of pile down to welded joint	Length of steel footing	Pile Length
1	36"	54"	74"	39'-8"	12'	57'-2"
2	35"	44"	75"	38'-0"	12'	61'-7"
3	25"	73"	147"	40'-6"	18'	69'-6"
4	59"	68"	131"	37'-5"	18'	69'-7"
5	45"	41"	77"	37'-0"	12'	59'-8"
6	72"	50"	72"	40'-8"	12'	57'-3"

As Constructed

STATE OF ALASKA
DEPARTMENT OF PUBLIC WORKS
DIVISION OF WATER AND HARBORS

BREASTING DOLPHIN
WRANGELL FERRY TERMINAL

SCALE As shown
DATE 9-25-70
DRAWN BY JET
CHECKED BY DSM

APPROVED Don Statter
DIRECTOR