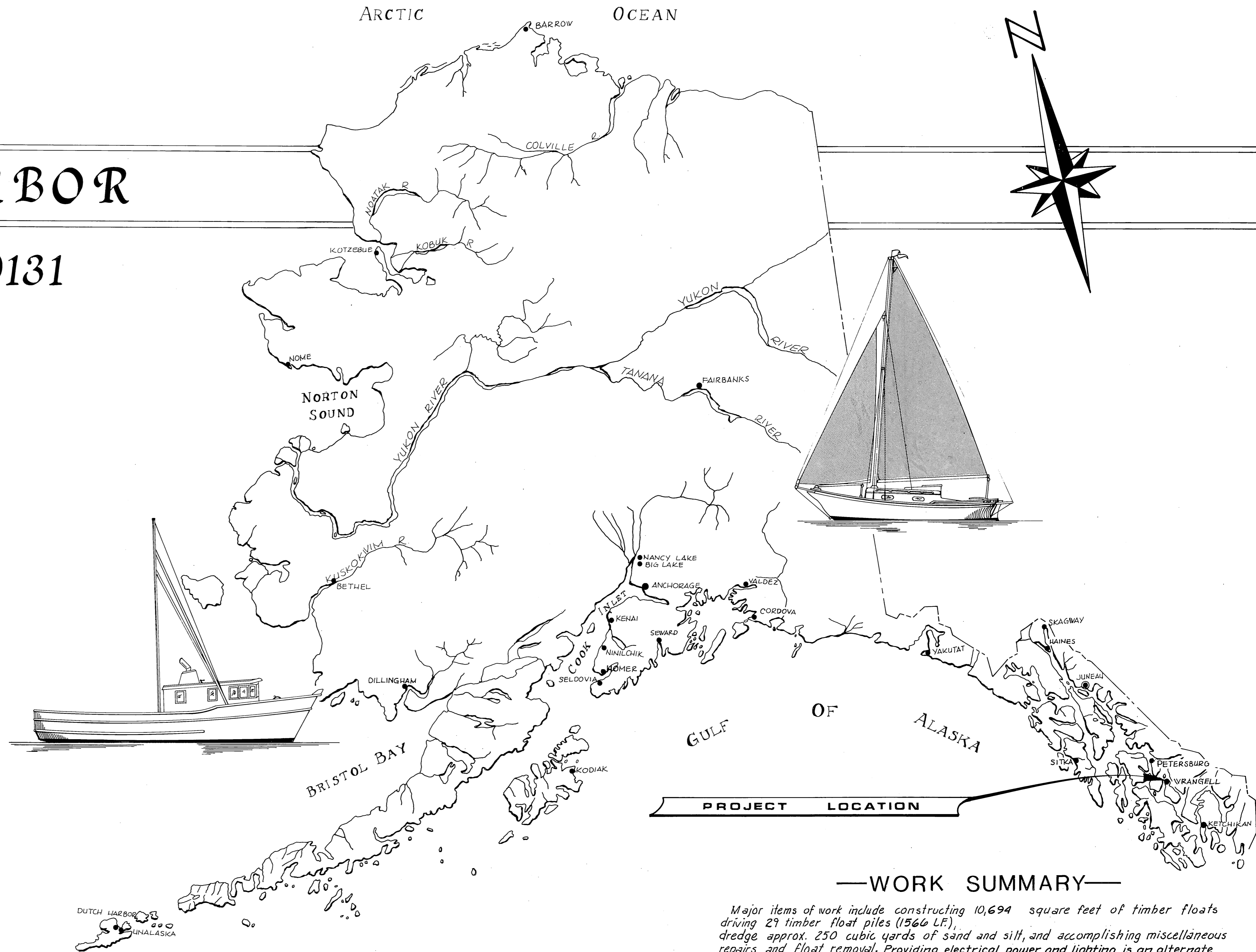


# WRANGELL BOAT HARBOR

## PROJECT NO. K30131



**AS-BUILT**

Date: 6-30-81  
 Division of Harbor Design  
 and Construction

**INDEX TO SHEETS**

1.	TITLE & LOCATION		
2.	PROJECT LAYOUT		
3.	STRINGER DIAGRAM		
4.	TYPICAL 10'-0" FLOAT		
5.	EXISTING 17' & 32' TYPICAL STALL		
6.	DREDGING & MISC. DETAILS		
7.	ELECTRICAL E1		
8.	ELECTRICAL E2		

**APPROVED**

*Wm. Statter*

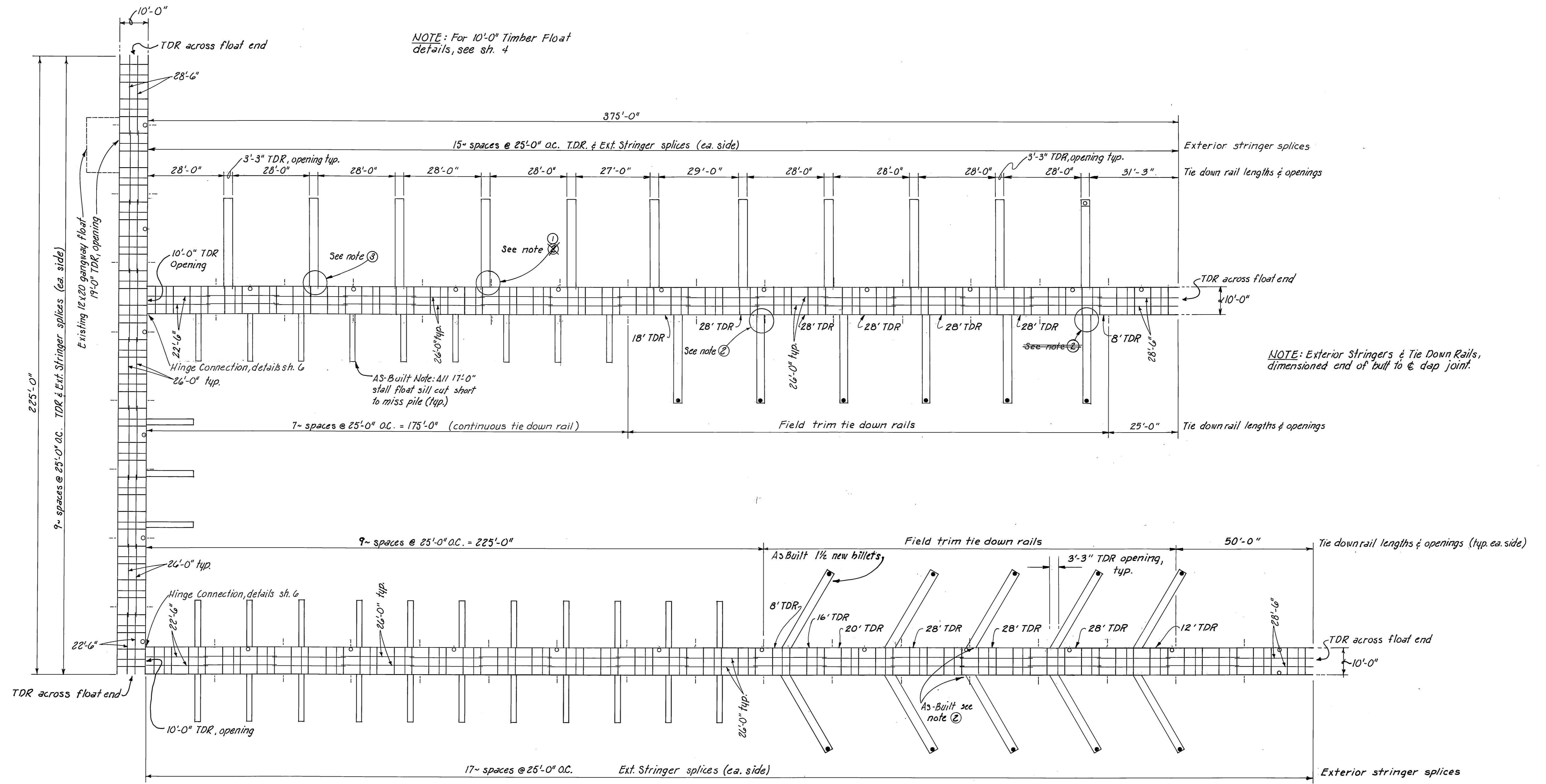
DATE 6/12/80

SHEET 1 OF 8

**STATE  
 OF  
 ALASKA**

DEPARTMENT OF TRANSPORTATION & PUBLIC FACILITIES  
**DIVISION OF HARBOR  
 DESIGN & CONSTRUCTION**



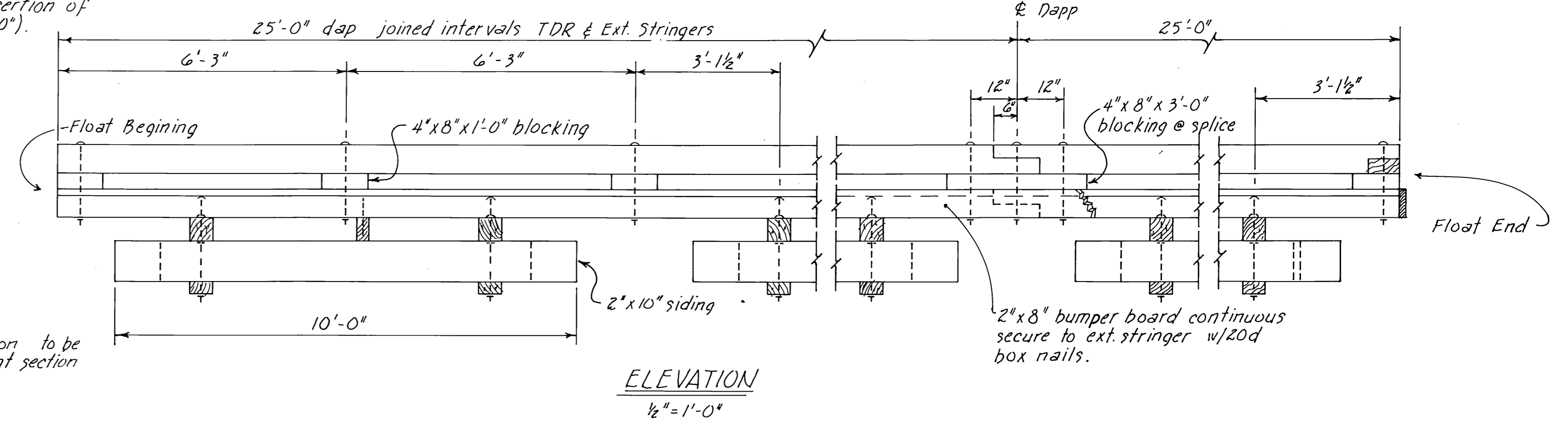
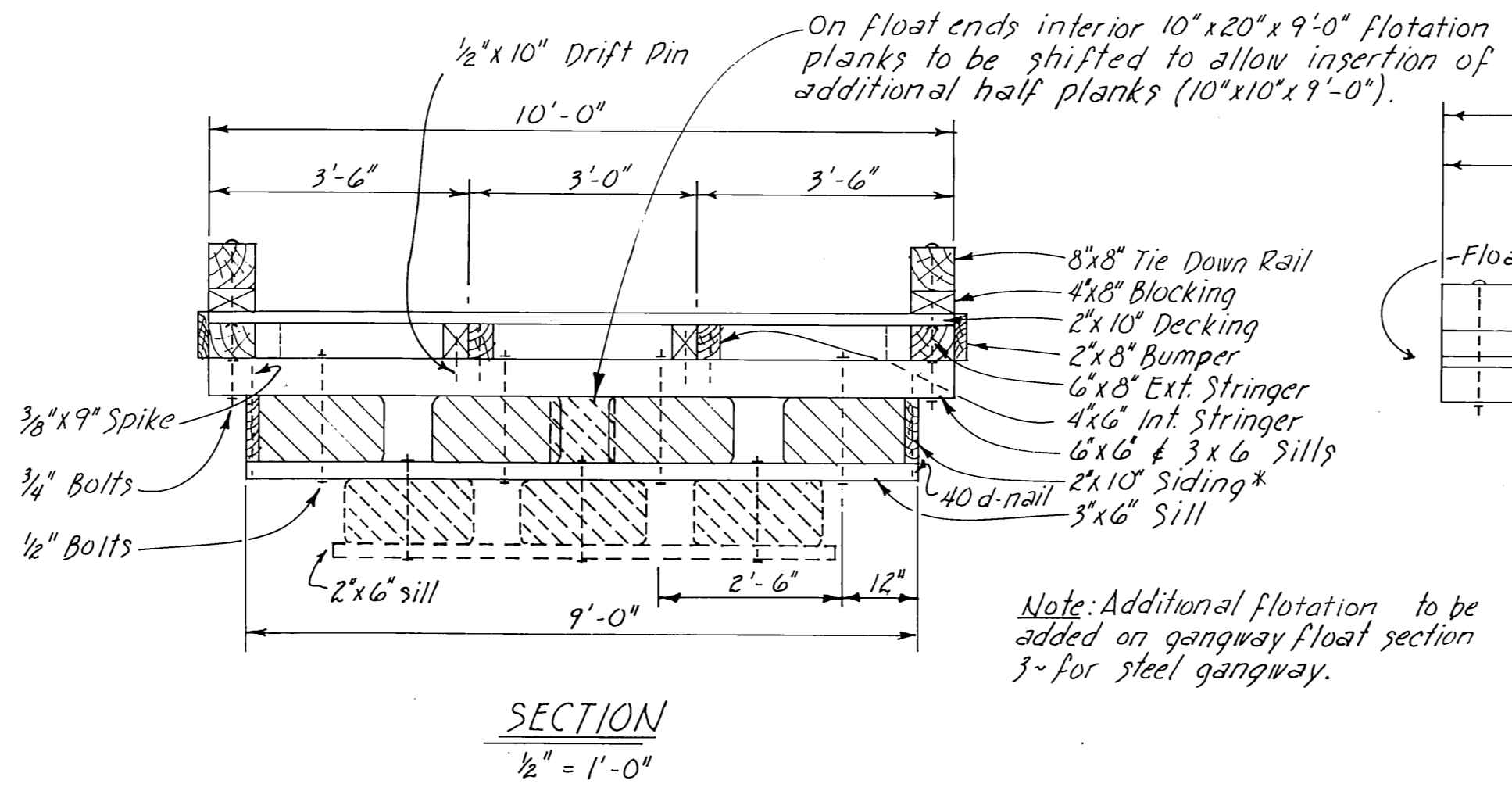


- NOTES:**
- ① Where 32'-0" integral stalls interfere with TDR & Ext stringer splice & Blocking adjust stall location as necessary to provide 3'-3" TDR opening on new 10'-0" float.
  - ② Where 32'-0" hinge connected stalls interfere with TDR & Ext. stringer splice & Blocking a 4" x 6" x 4'-0" splice block will be used on Ext. stringer, so a 3'-3" TDR opening can be provided on new 10'-0" float. See detail "A" sheet 4
  - ③ See Detail "B" for decking layout where 32'-0" integral stalls connect to new 10'-0" float. Detail "B" see sheet 6

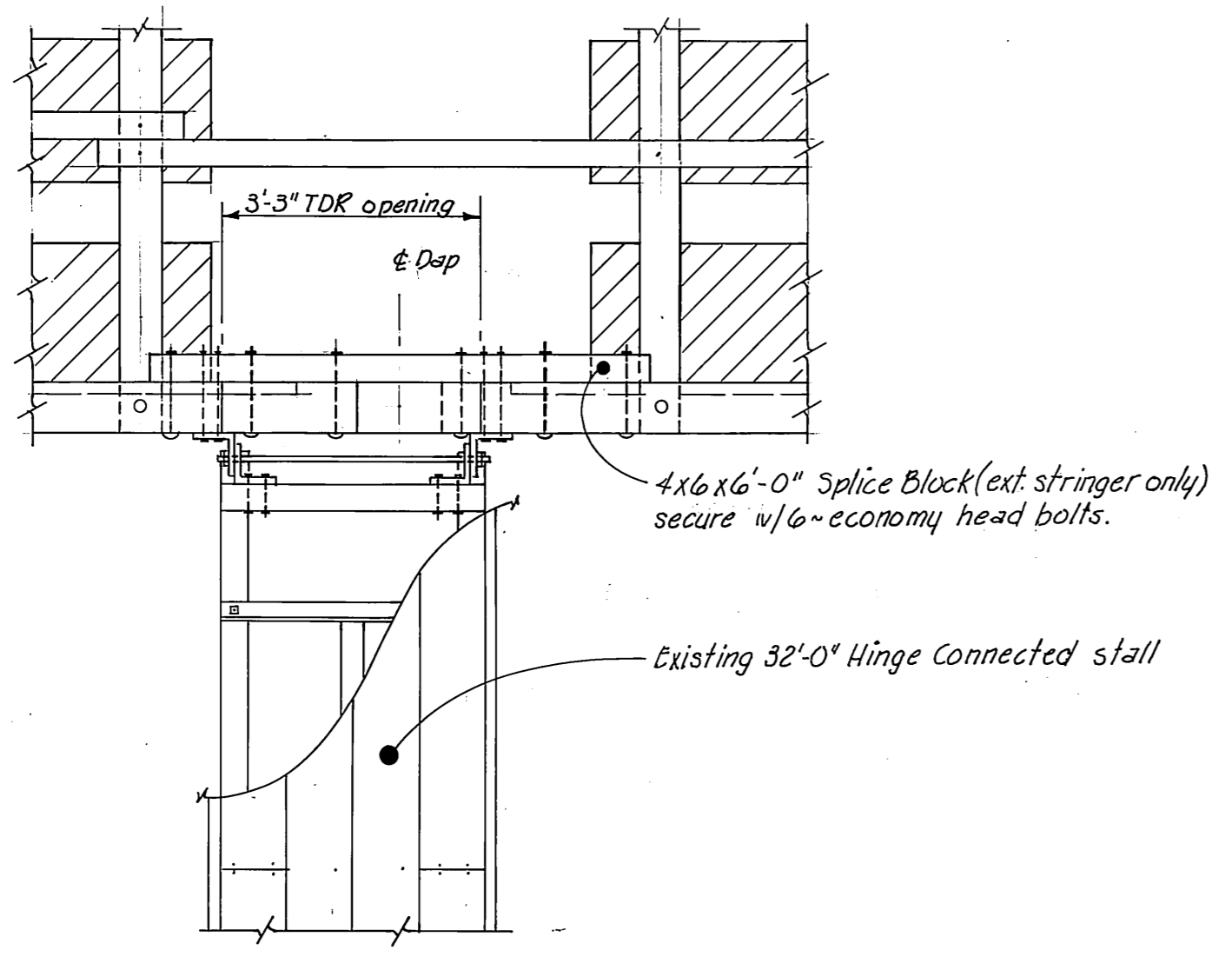
STAMP	DO NOT SCALE THIS DRAWING - USE DIMENSIONS	
	STATE OF ALASKA DEPARTMENT OF TRANSPORTATION AND PUBLIC FACILITIES DIVISION OF HARBOR DESIGN AND CONSTRUCTION	
	WRANGELL	ALASKA
	STRINGER DIAGRAM LAYOUT	
SCALE: 1" = 20'	SURVEYED: ~	APPROVED:
DESIGNED: HRM	DRAWN: GRF	Robert P. Beck Chief of Design
CHECKED:	DATE: May 9, 1980	
PROJECT NUMBER: K 30/31	SHEET 3 OF 8	

MATERIALS		
ITEM	DRESSING	TREATMENT
3"x6" & 6"x6" Upper Sill	S-4-S	Creosote
2"x10" Siding	2"x10 1/2"	"
3"x6" & 2"x6" Lower Sill	S-4-S	"
4"x6" Interior Stringers	S-4-S	"
6"x8" Exterior Stringers	S-4-S	"
2"x8" Bumpers	S-4-S	Penta
6"x6" Collar Stringers	S-4-S	Creosote
2"x10" Decking	Milled	Penta
4"x8" Blocking	S-4-S	"
8"x8" Tie Down Rail	S-4-S	"
		(See Specs)

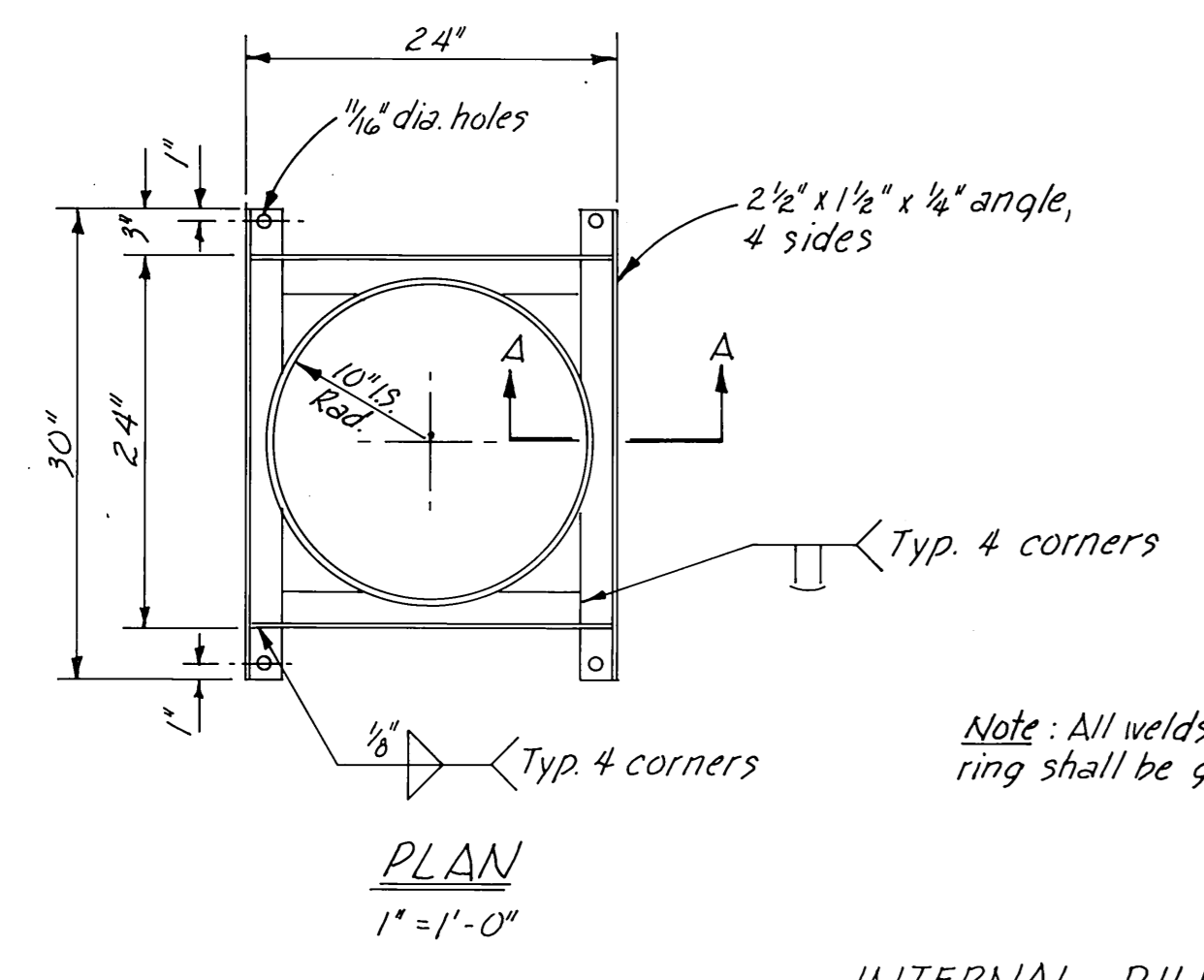
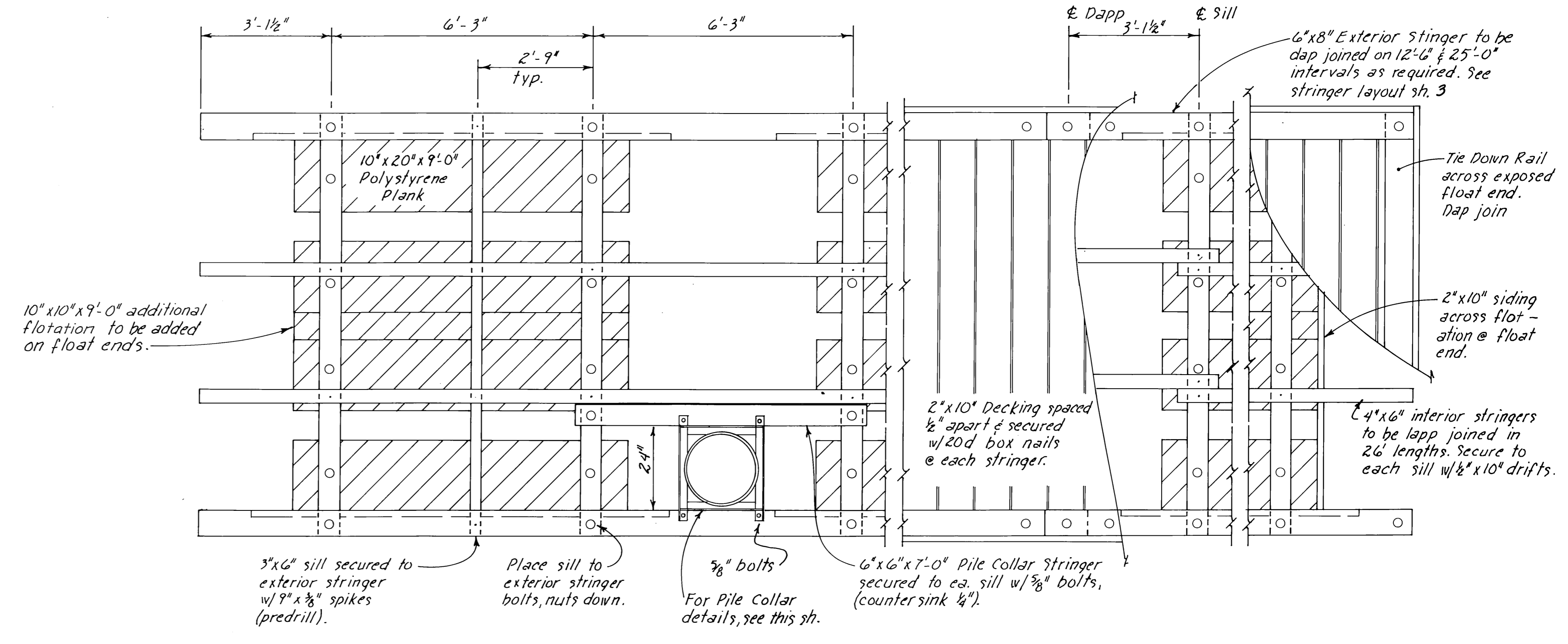
\* Exact width to conform to width of flotation material  
All material to be, no. 1 grade Hem./Fir, 10% max. no. 2 grade.



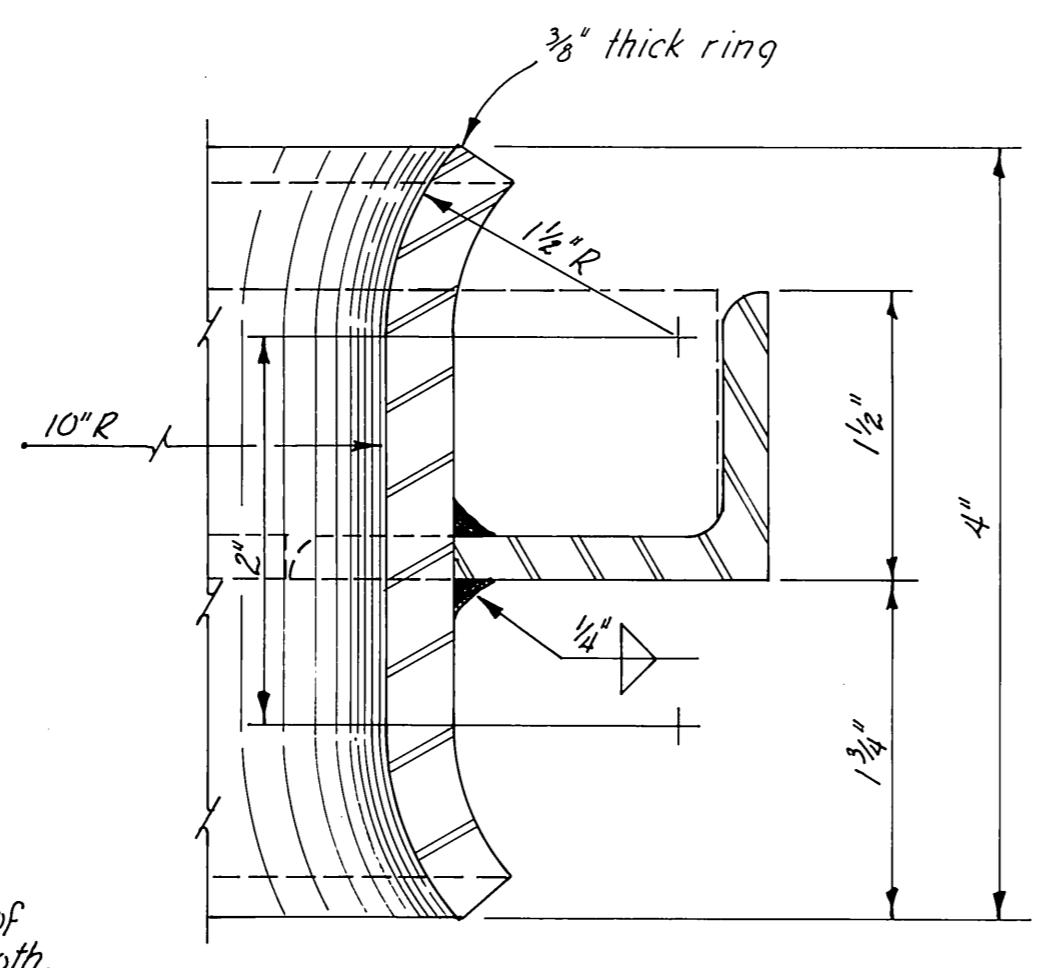
Note: Decking on 10'-0" float not shown for clarity



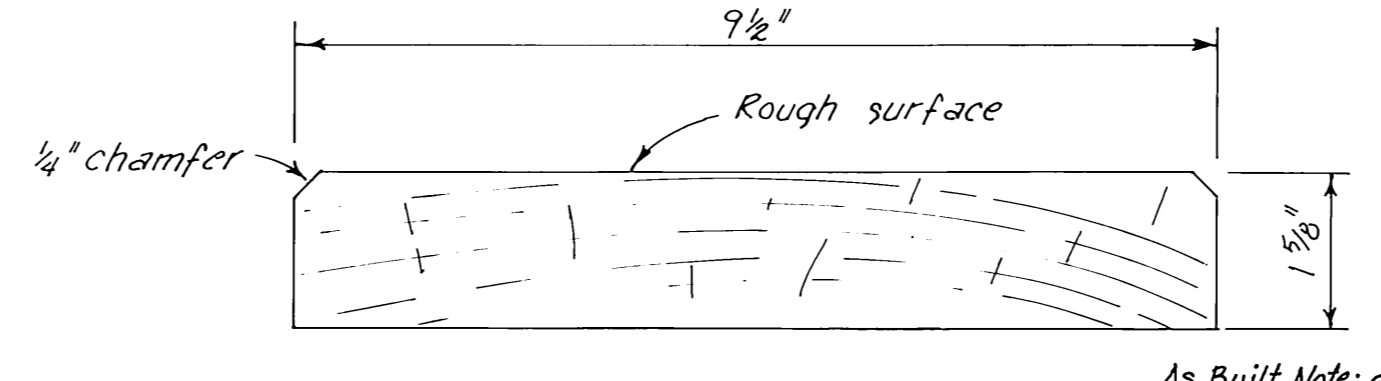
**DETAIL "A"**  
Splice block on 10'-0" float, ext. stringer where 32'-0" hinge connected stall interfere with TDR & Ext. stringer splice, to provide 3'-3" TDR opening.



**INTERNAL PILE COLLAR**



**SECTION A-A FULL SIZE**



**MILLED DECKING DETAIL 1/2 SIZE**

As Built Note: decking curling bad without groove, contractor said no money is saved on materials bid wise.

**PREDRILLED BOLT HOLES**

Collar Members - all holes  
Sills - Holes for flotation plank bolts  
Stringers - holes for stringer to sill bolts  
Tie Down Rail - all holes

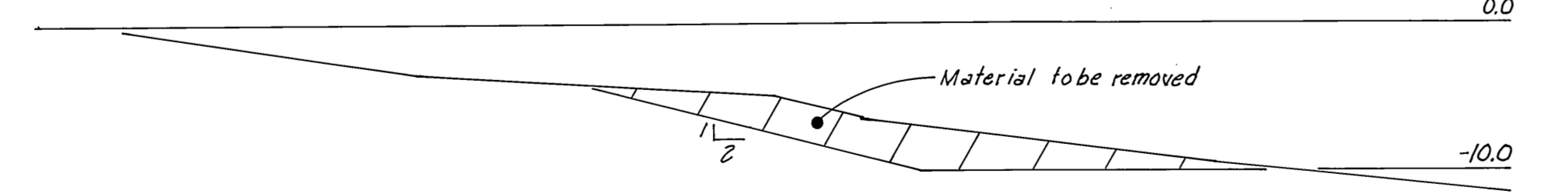
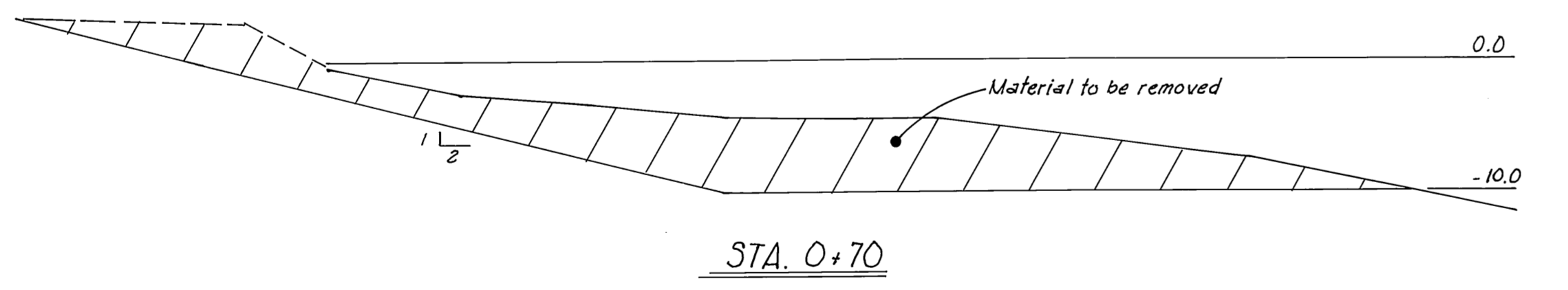
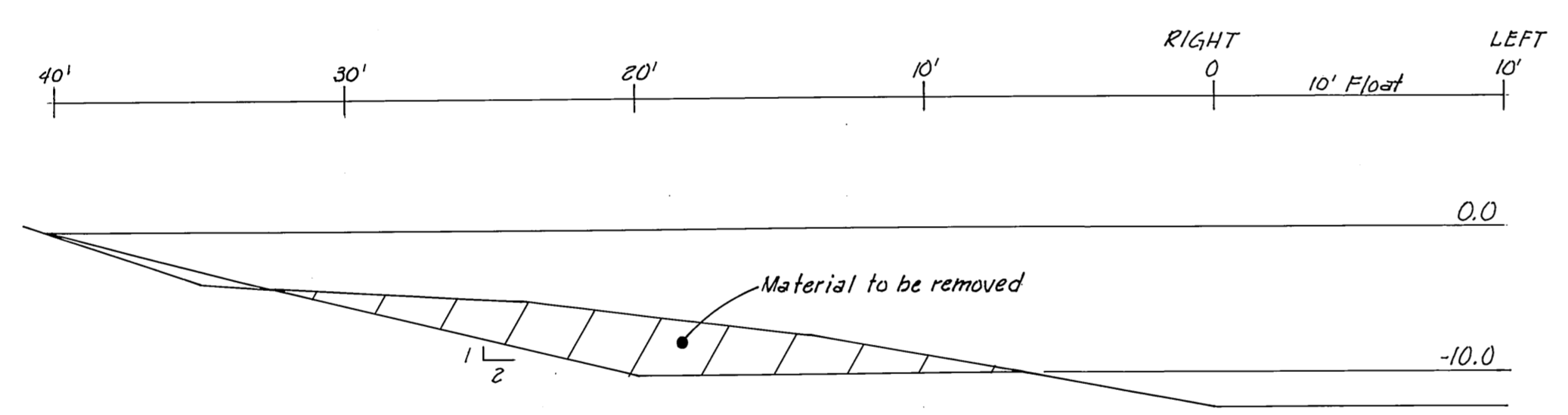
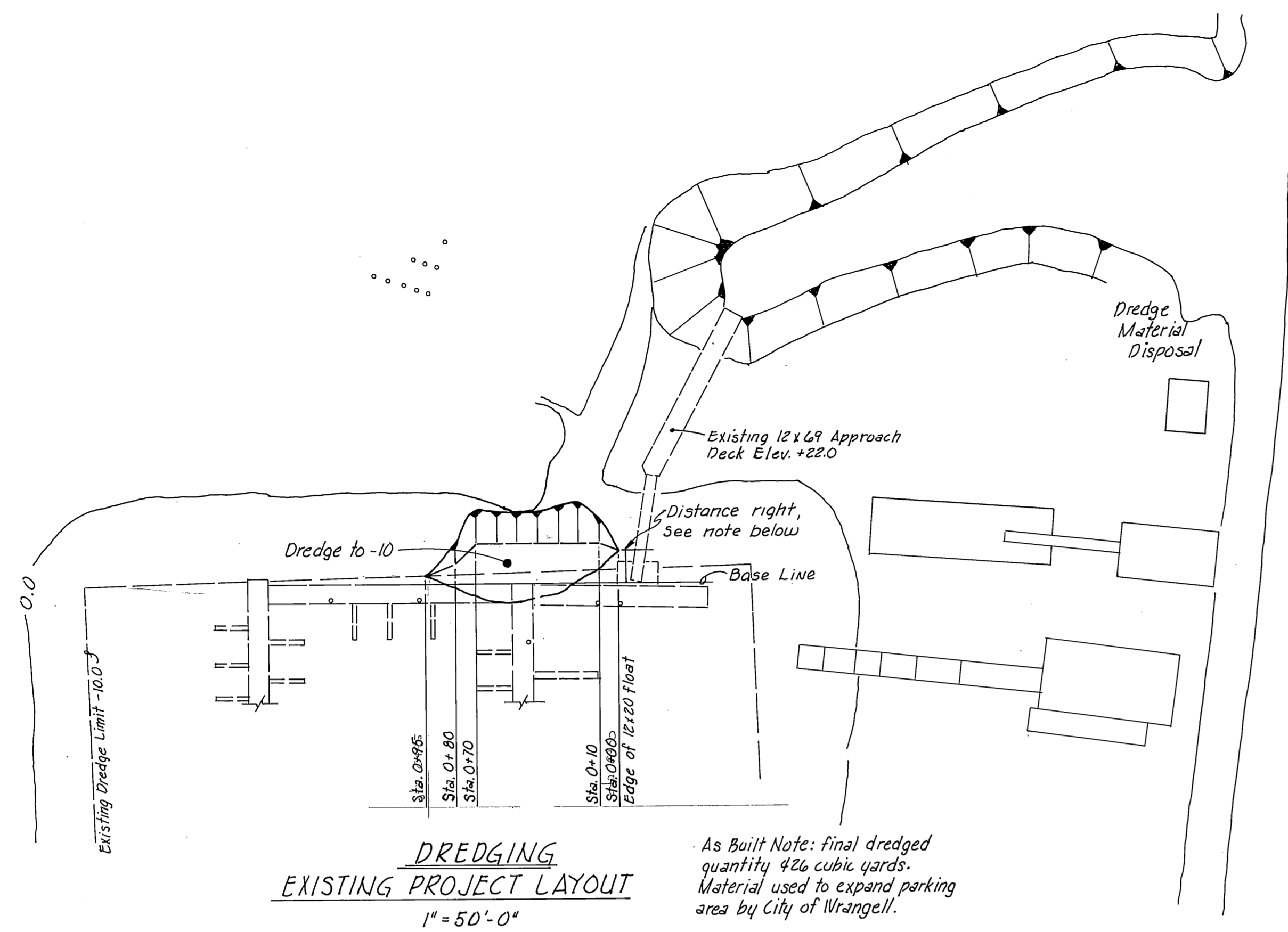
**FIELD DRILLED BOLT HOLES**

Pile Collar Int. Stringers - all holes  
Rail Blocking - all holes  
Exterior Stringer - 1. holes for tie down rail bolts  
2. holes for pile collar plate bolts

**NOTES:**  
All hardware to be hot-dipped galvanized. A malleable iron washer shall be placed between all nut and wood surfaces. All bolts to be of the economy head type. Bolt holes to be drilled 1/16" oversize except sill bolt holes for flotation planks, 1/8" oversize. Drift holes to be drilled 1/16" under-size. All field drilled holes shall be treated with hot creosote oil. All pressure treated material shall be cut to size prior to treatment. Tie Down rails shall extend across all float ends except under gangways. All bolt heads facing decking shall be countersunk 1/4" previous to treatment. Field drill all drift bolt holes. A barrier of 6 mil black polyethylene shall be placed between the contact surfaces of all creosote timber and flotation material (except float siding members).

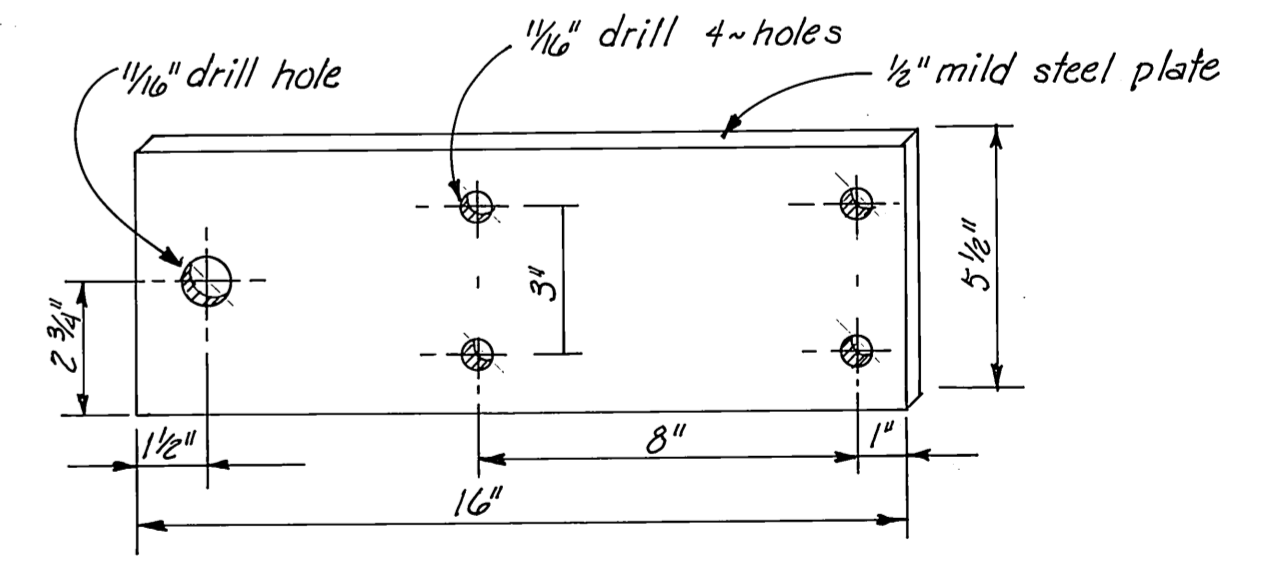
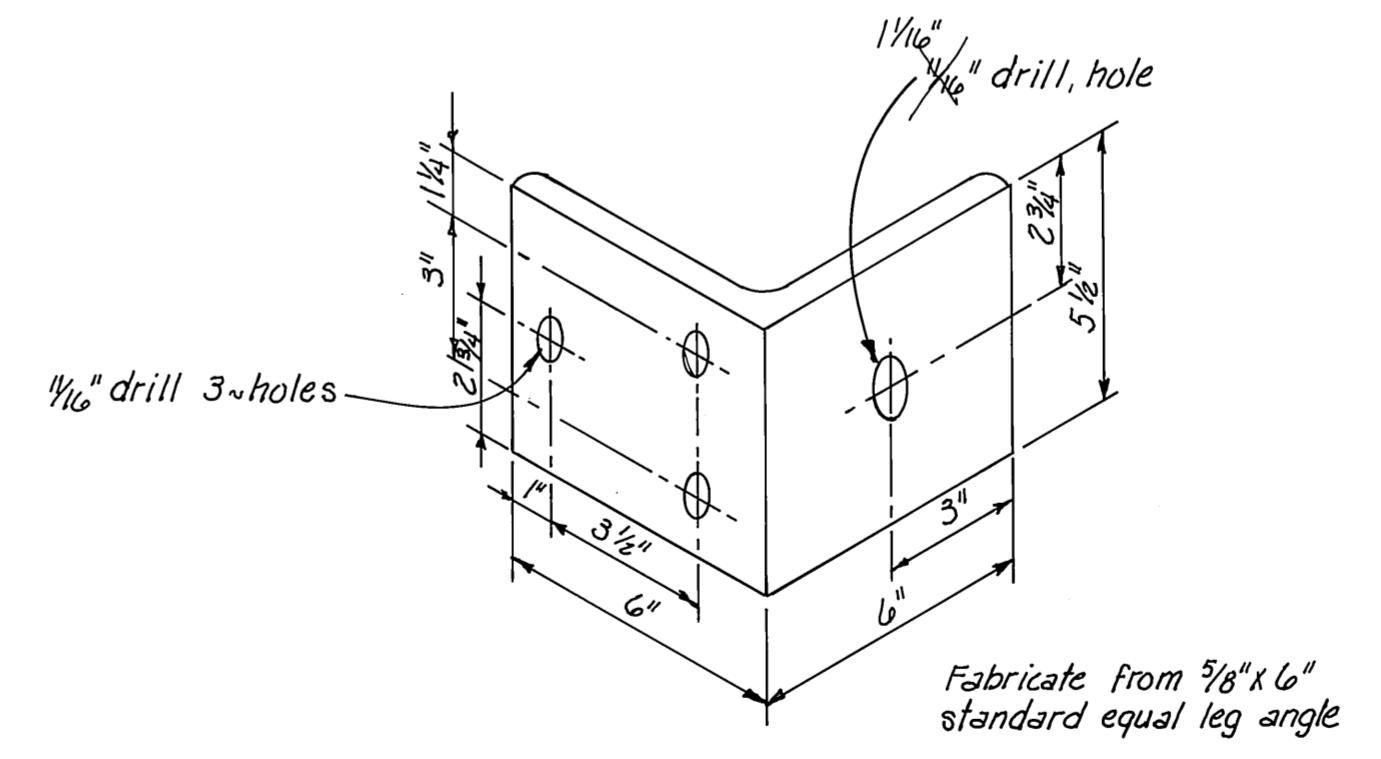
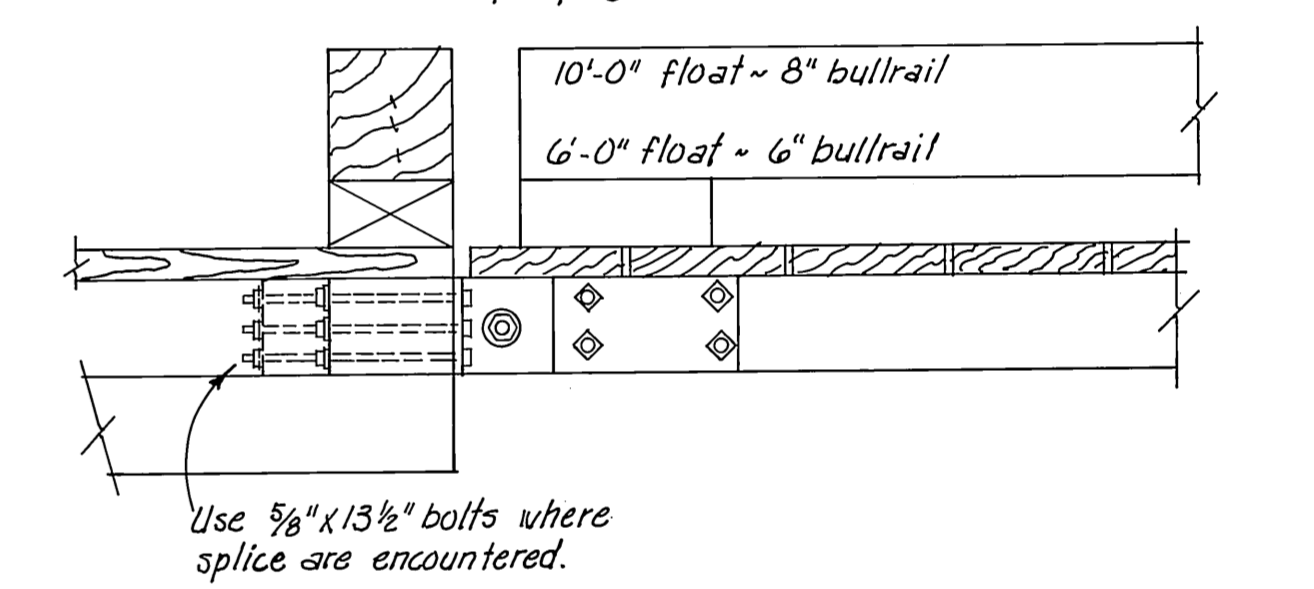
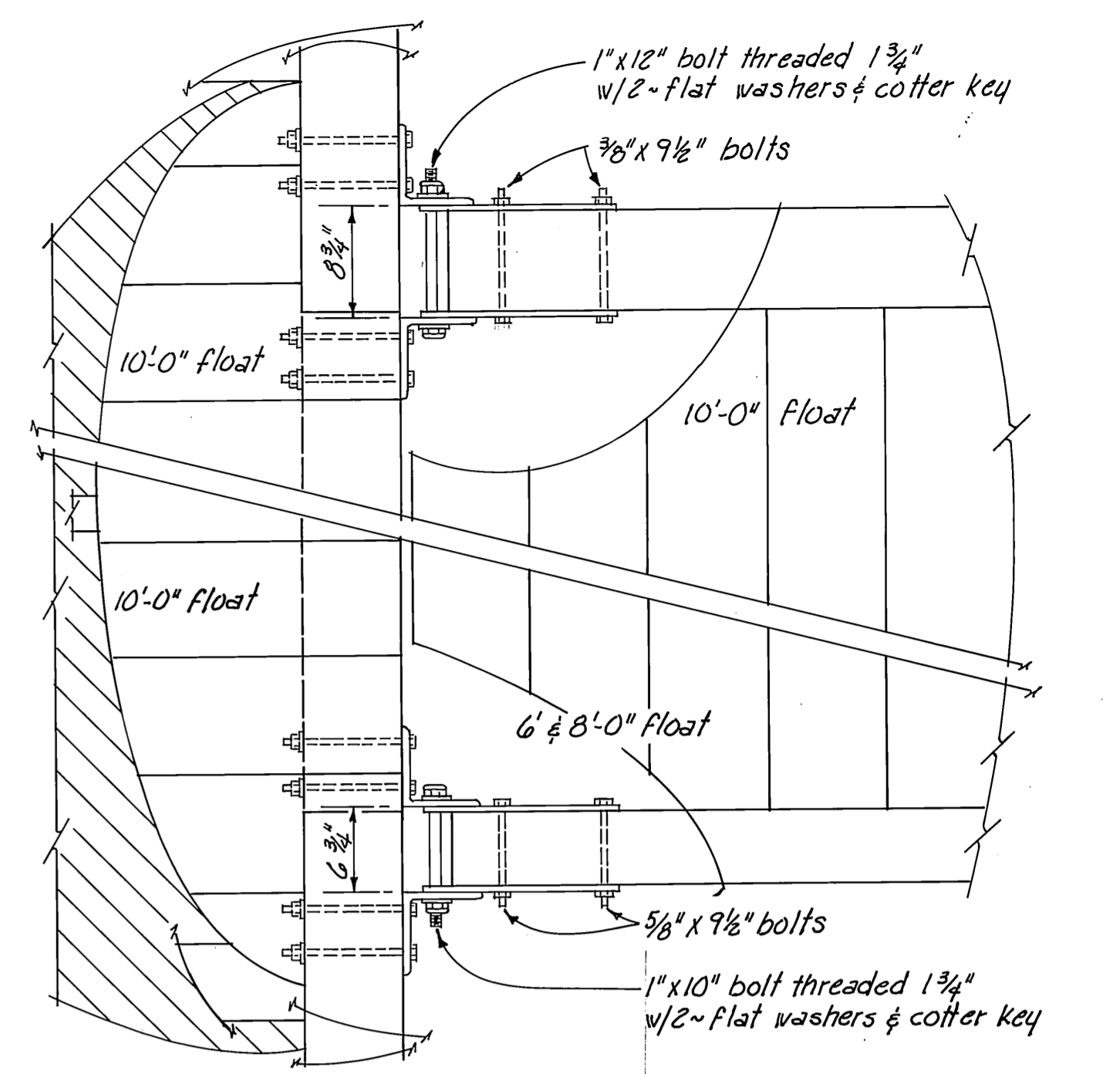
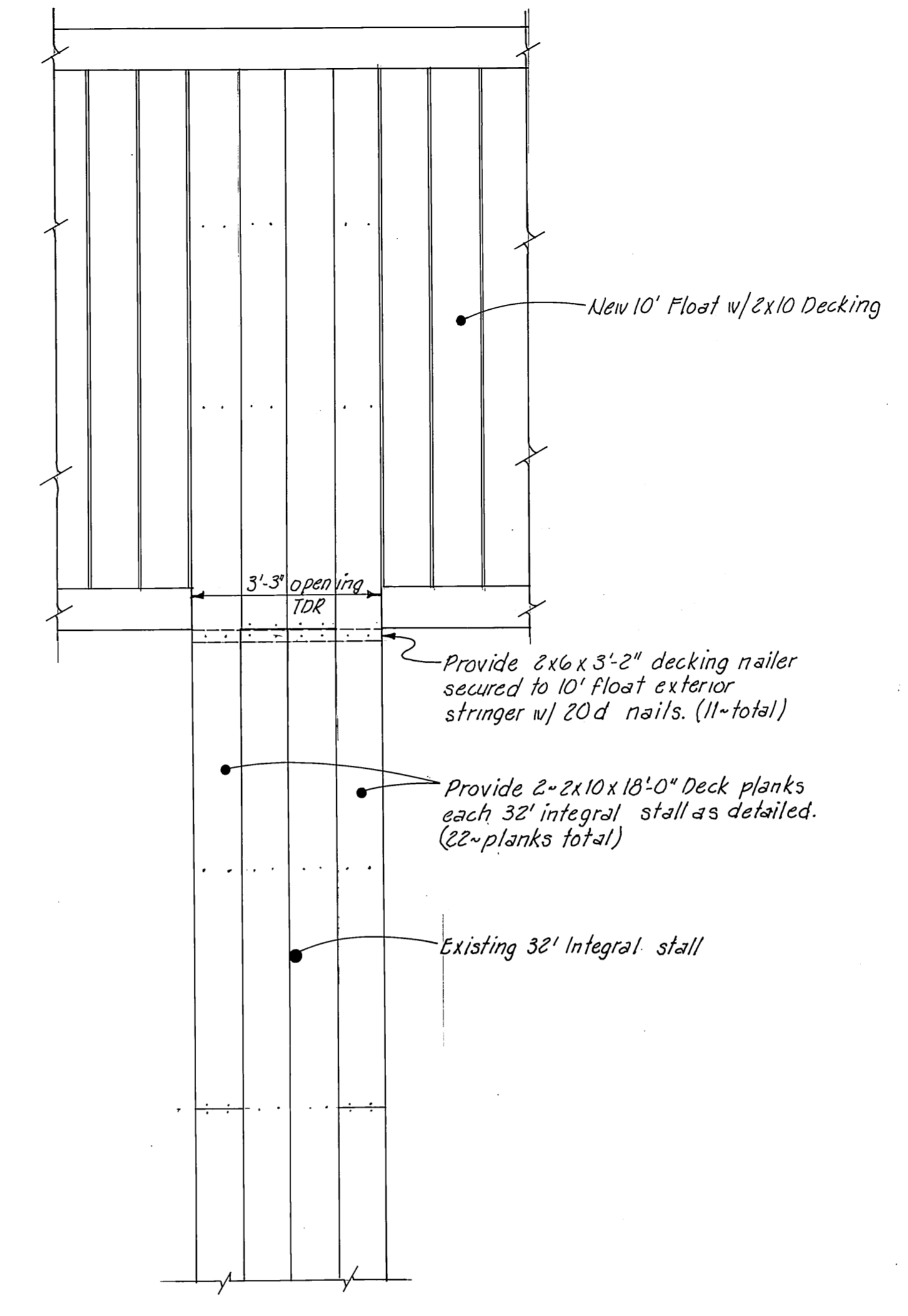
STAMP		DO NOT SCALE THIS DRAWING - USE DIMENSIONS	
		STATE OF ALASKA DEPARTMENT OF TRANSPORTATION AND PUBLIC FACILITIES DIVISION OF HARBOR DESIGN AND CONSTRUCTION	
		<b>TYPICAL 10'-0" FLOAT</b>	
SCALE: <i>As Noted</i>	SURVEYED: _____	APPROVED: _____	
DESIGNED: _____	DRAWN: <i>GRF</i>	Robert P. Beck CHIEF OF DESIGN	
CHECKED: _____	DATE: <i>Jan. 1979</i>		
PROJECT NUMBER: <i>K30131</i>	SHEET: <i>4</i> OF <i>8</i>		



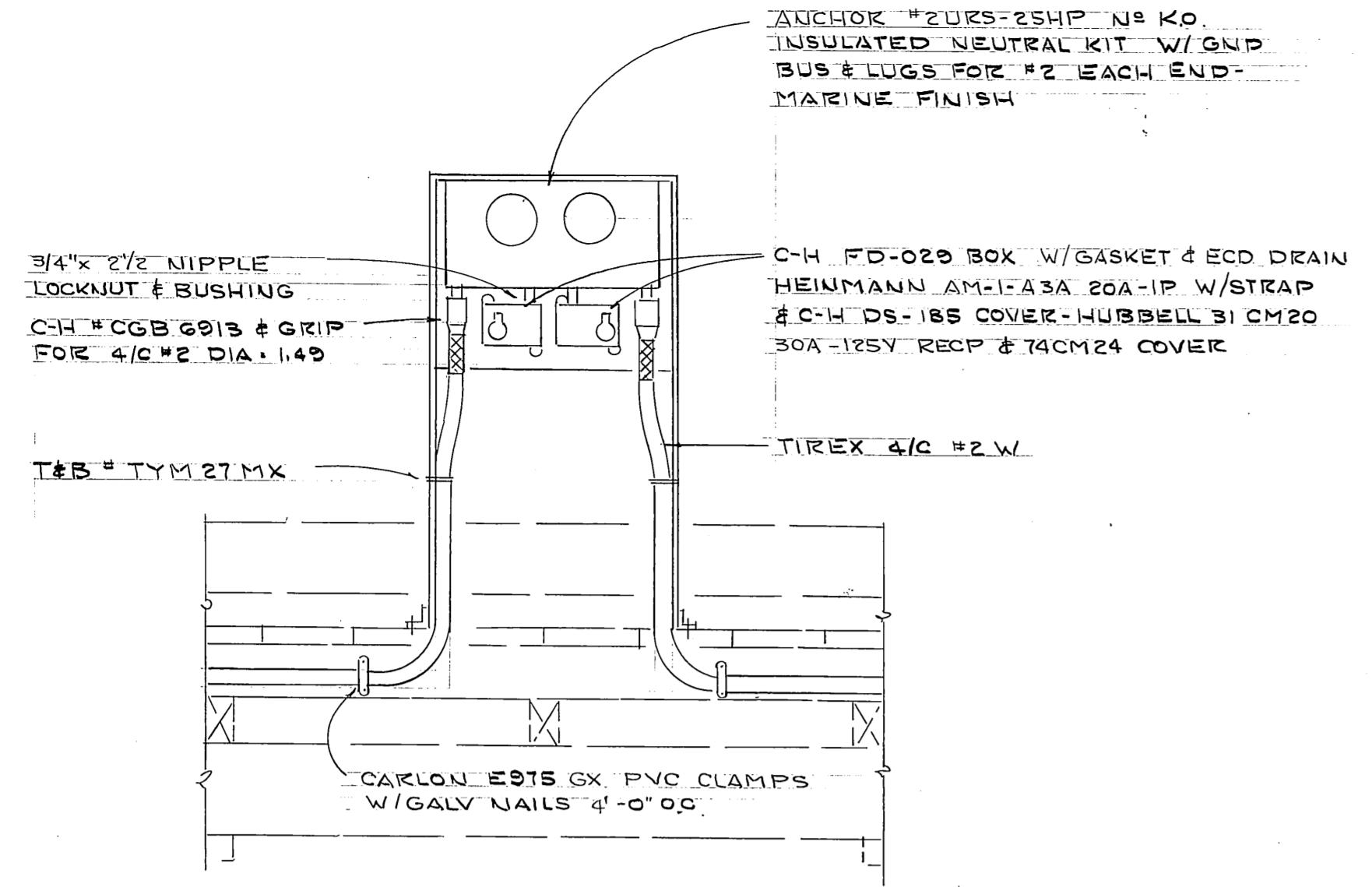


**SECTIONS**  
1" = 50'-0"

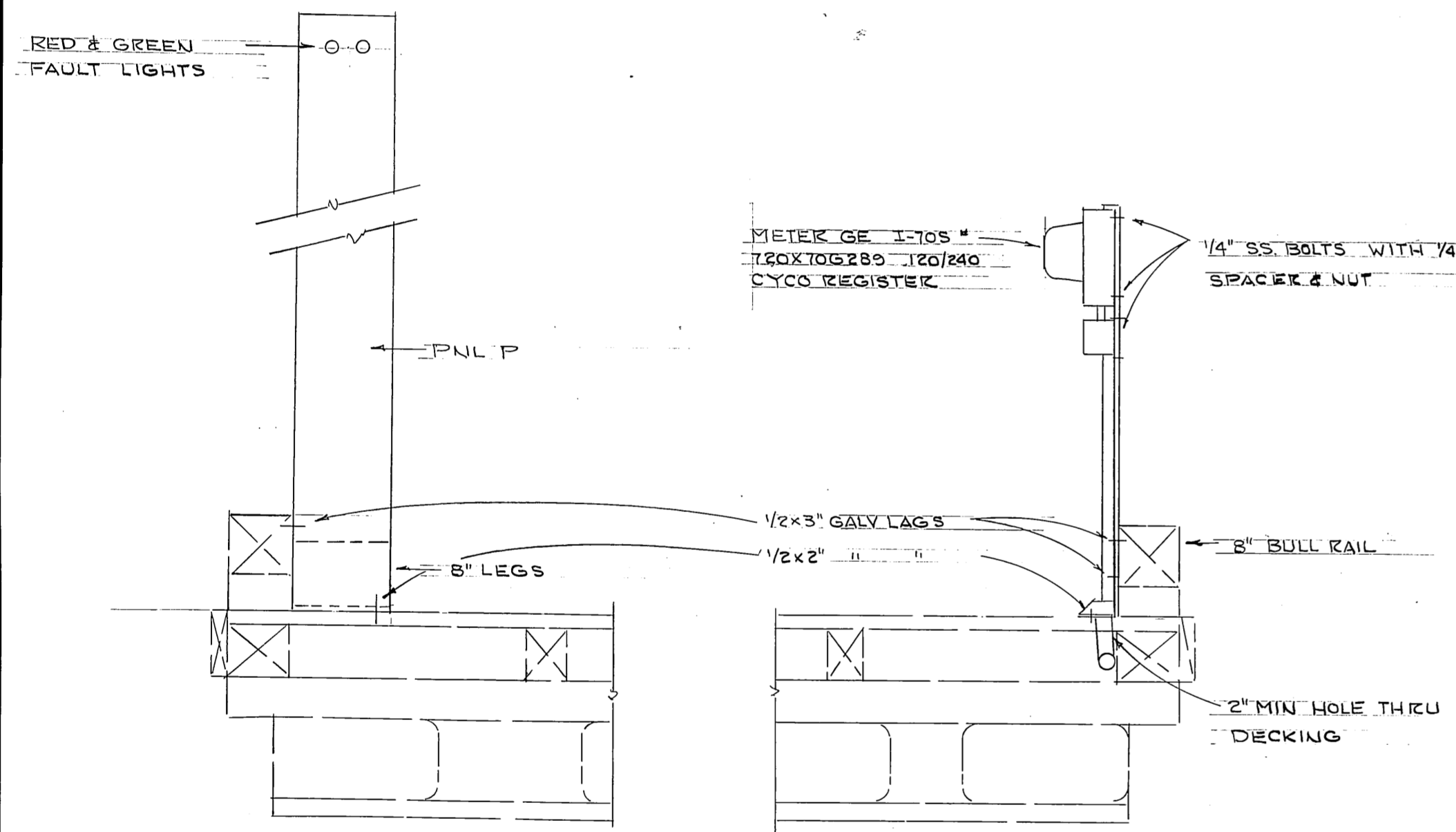
NOTE: Station 0+00 right 15'-0"  
Station 0+95 right 5'-0", from existing 10' float.



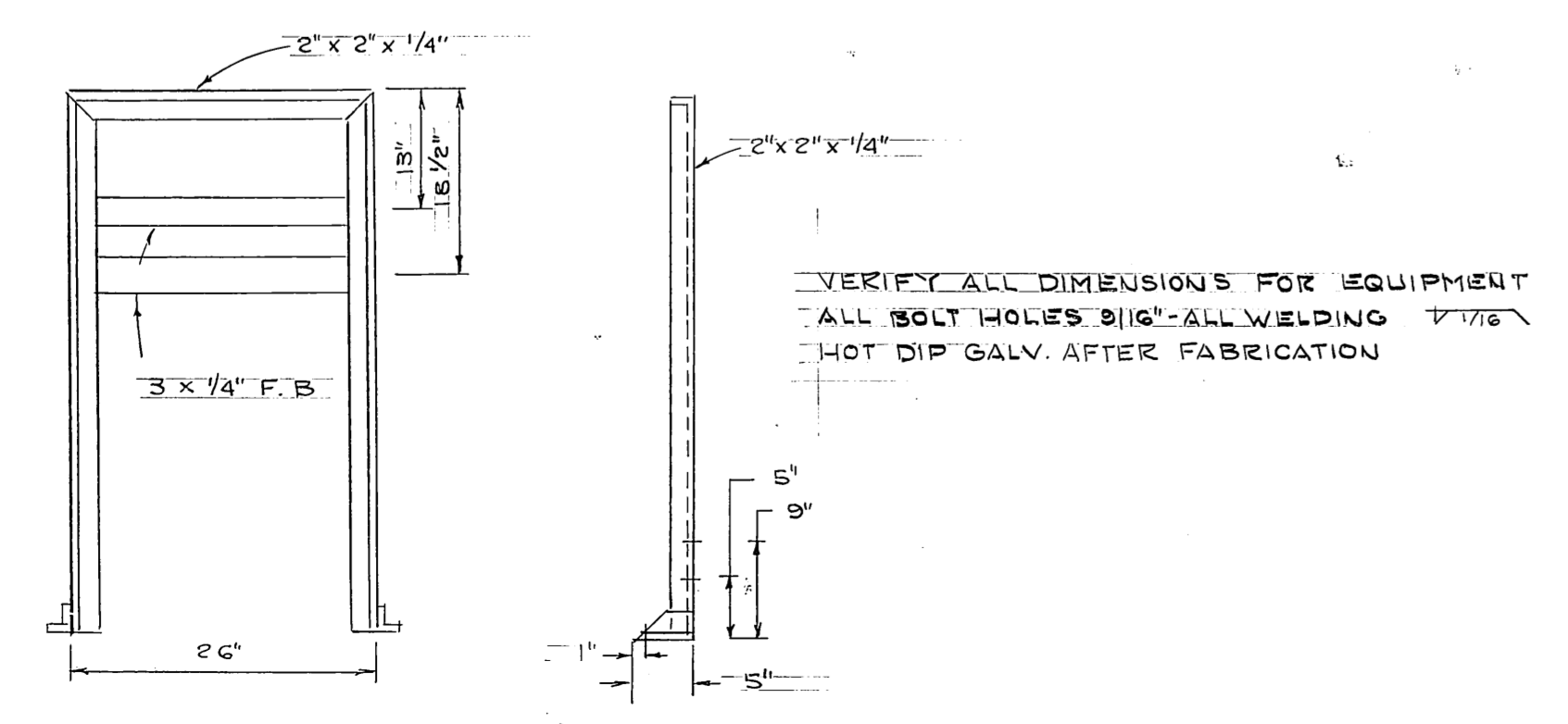
STAMP		DO NOT SCALE THIS DRAWING - USE DIMENSIONS	
		STATE OF ALASKA DEPARTMENT OF TRANSPORTATION AND PUBLIC FACILITIES DIVISION OF HARBOR DESIGN AND CONSTRUCTION	
		Wrangell	Alaska
<b>DREDGING &amp; MISCELLANEOUS DETAILS</b>			
SCALE: As Noted	SURVEYED:	APPROVED:	
DESIGNED: HRM	DRAWN: GRF	Robert P. Beck Chief of Design	
CHECKED:	DATE: May 9, 1980		
PROJECT NUMBER: K 30131	SHEET: 6 OF 8		



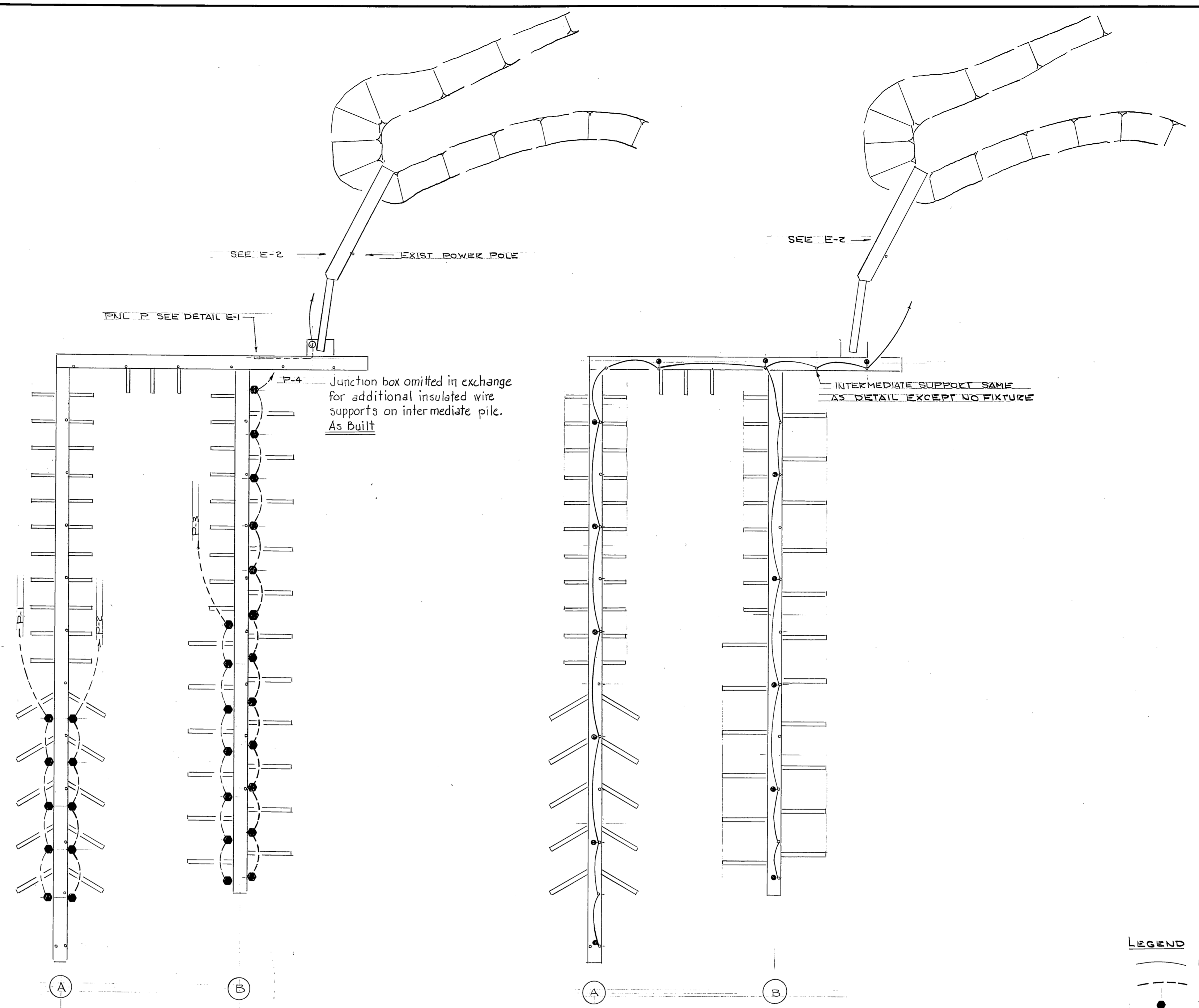
TYPICAL DETAIL  
3/4" x 1'-0"



TYPICAL SECTIONS  
3/4" x 1'-0"



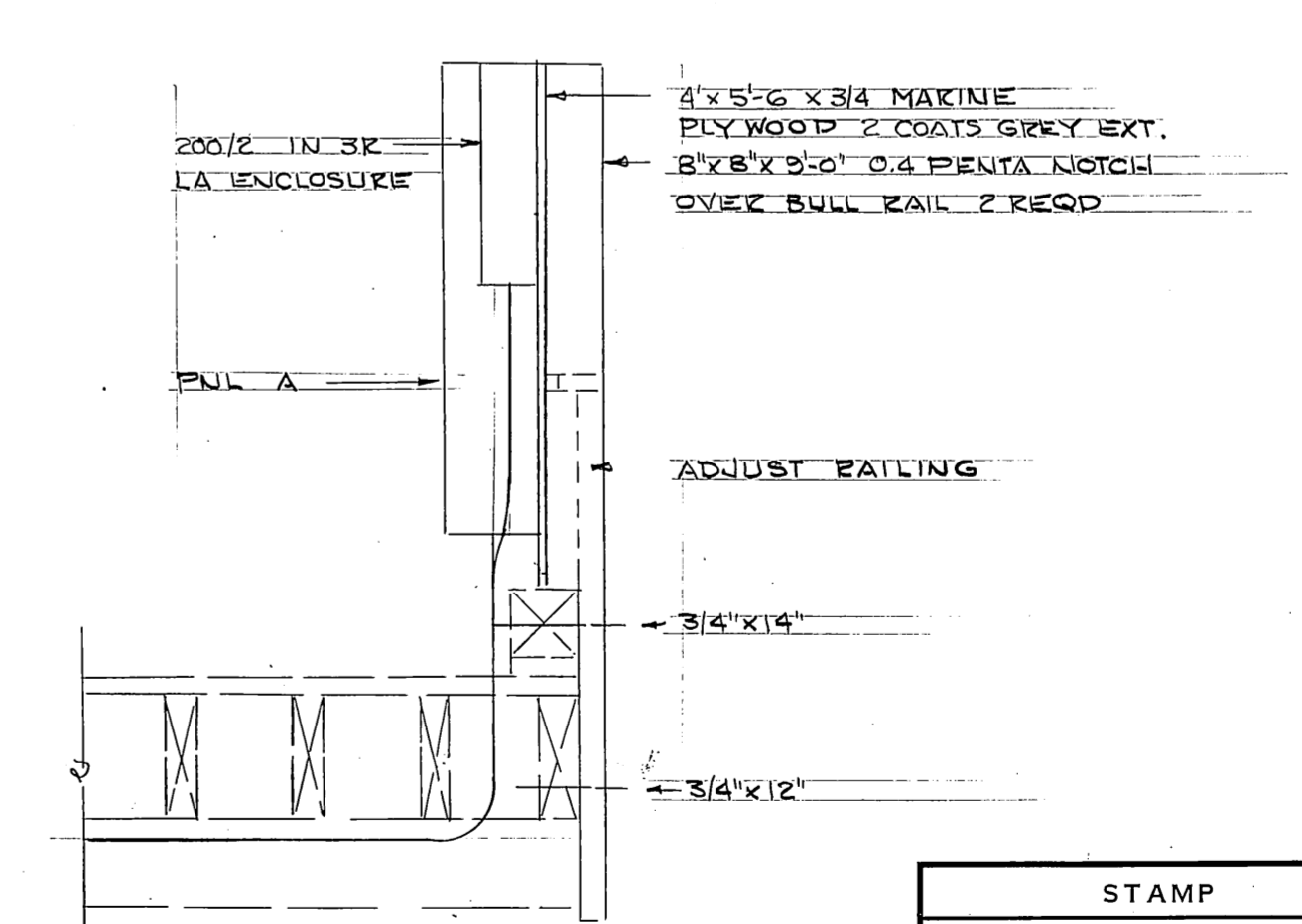
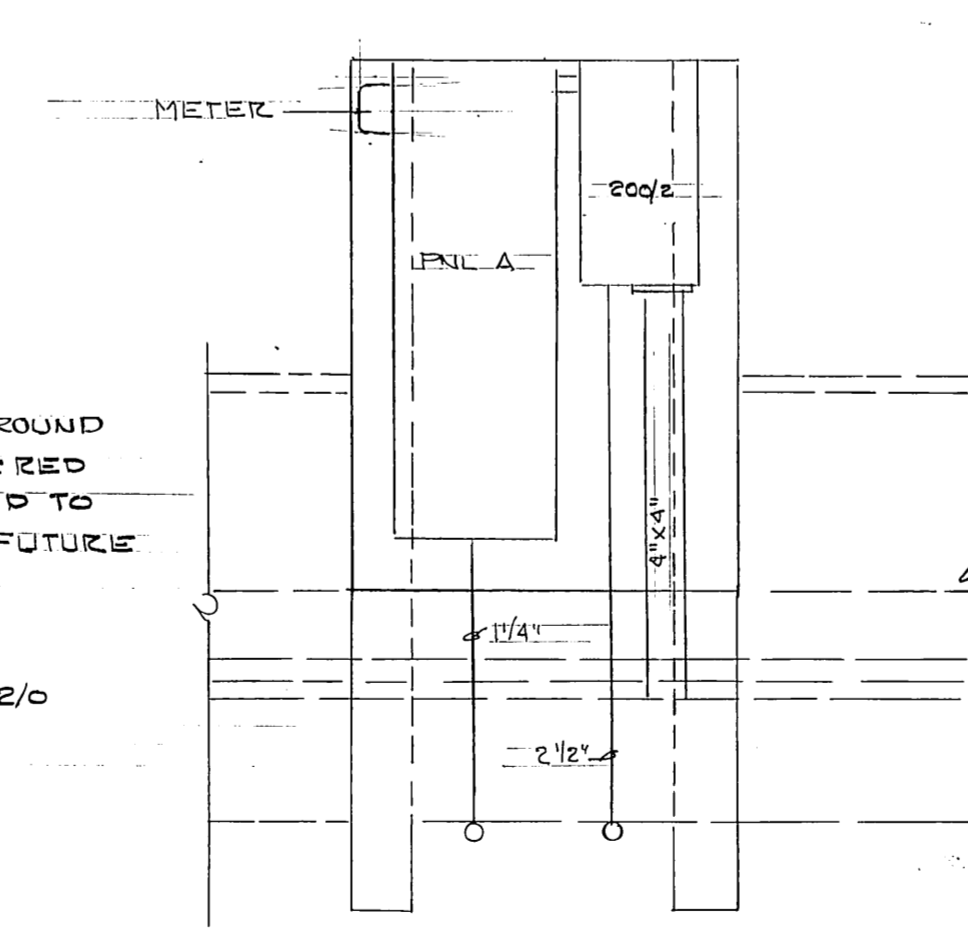
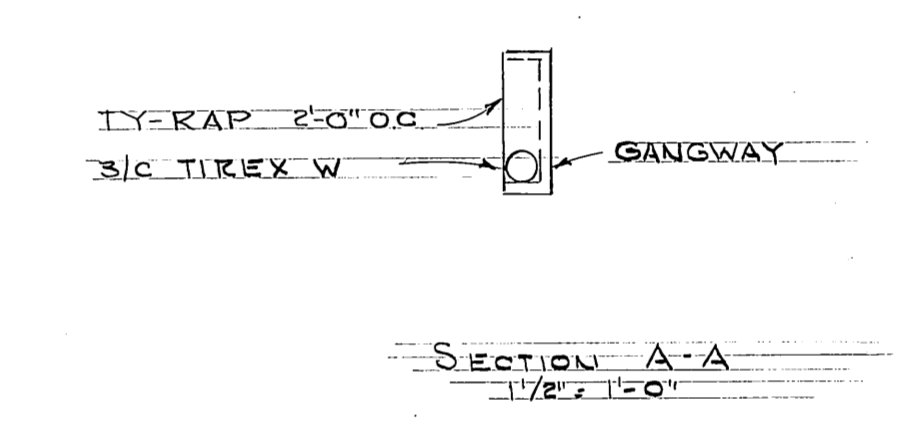
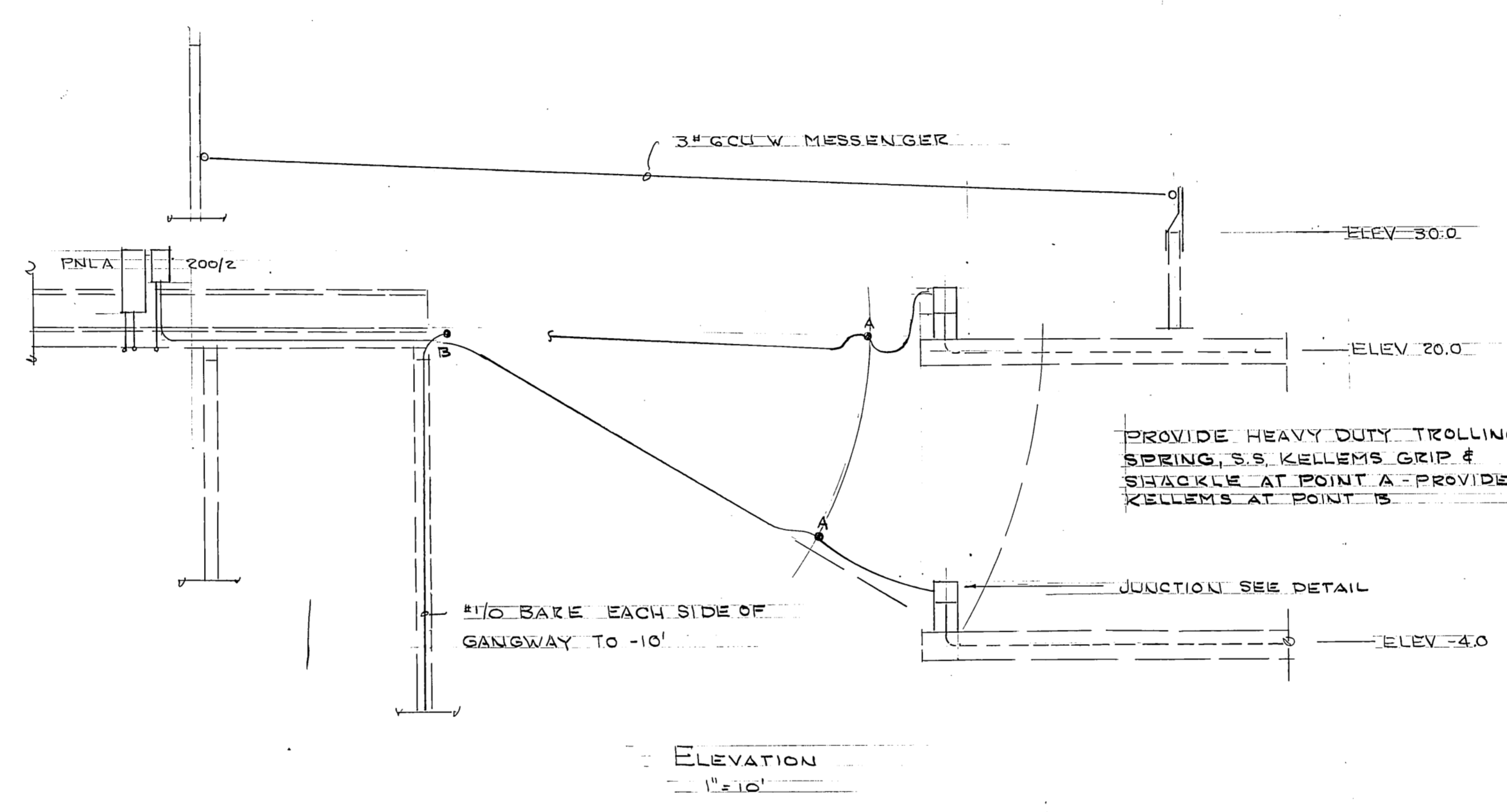
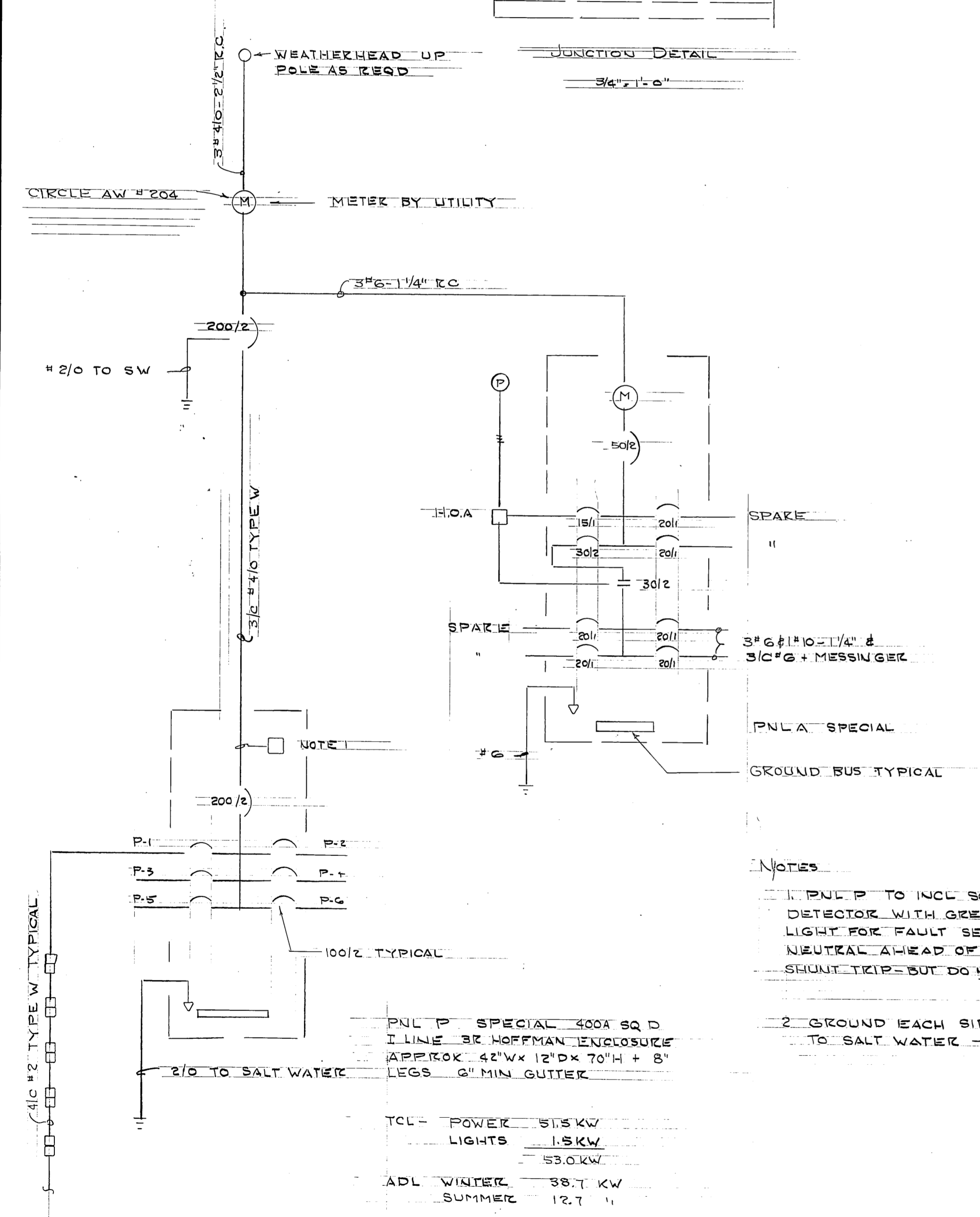
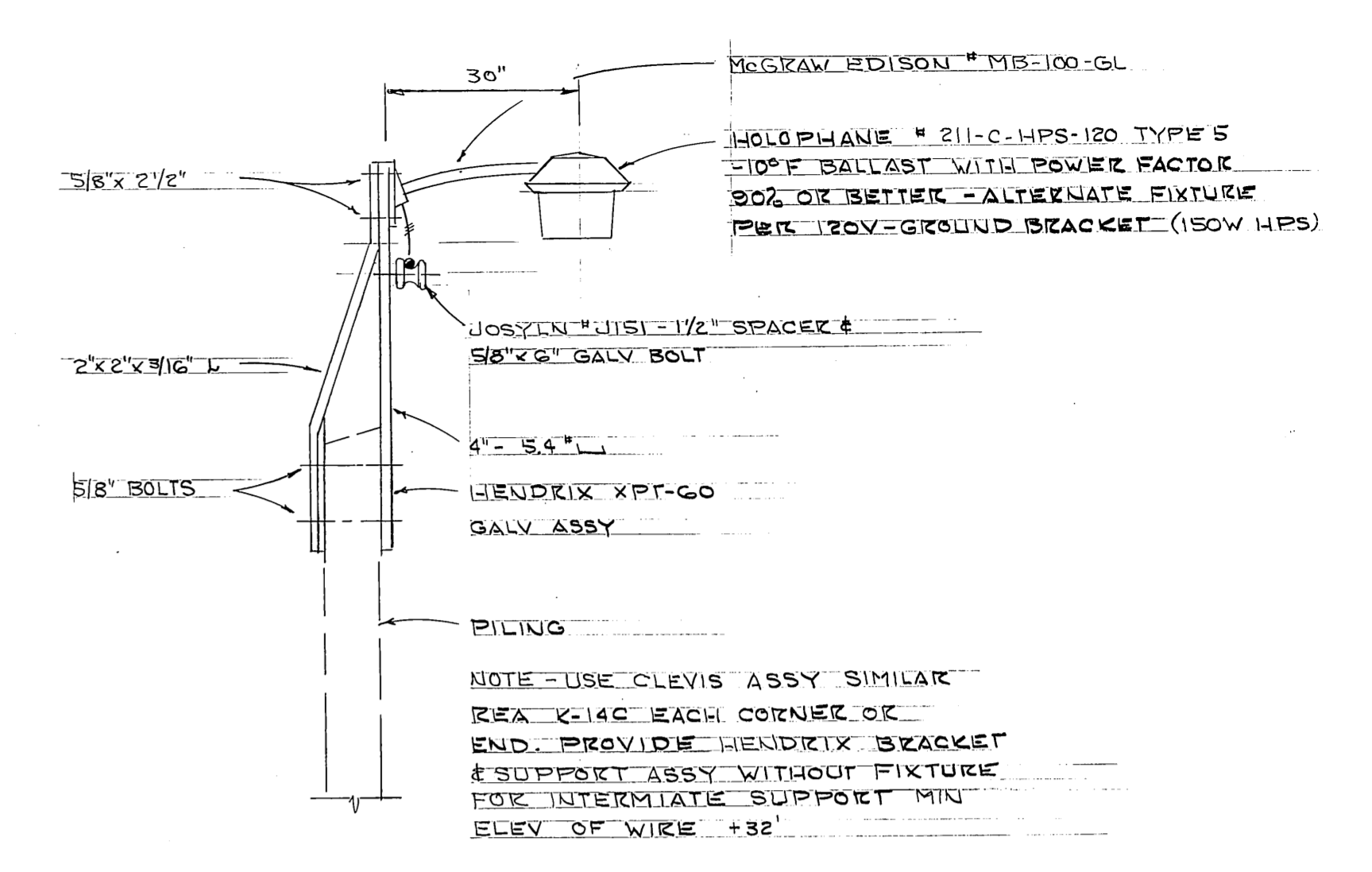
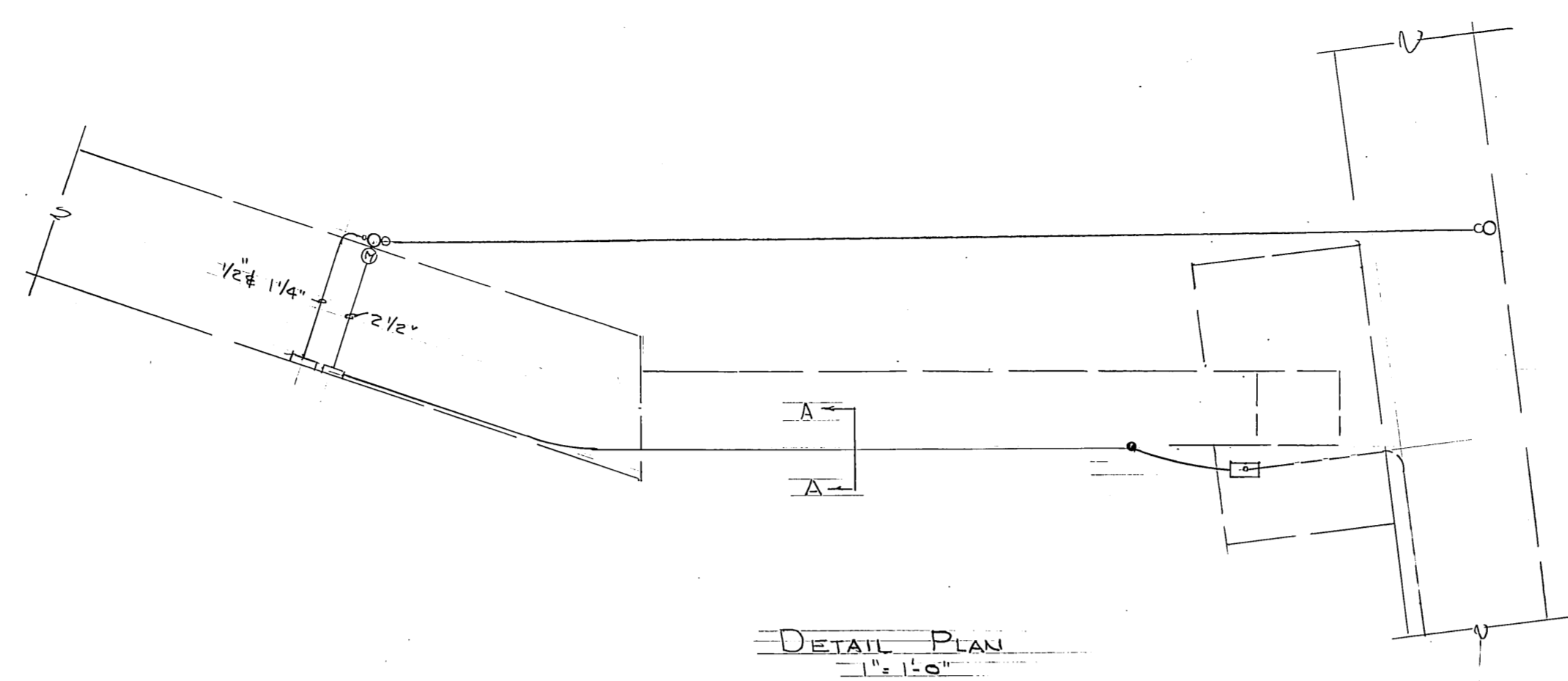
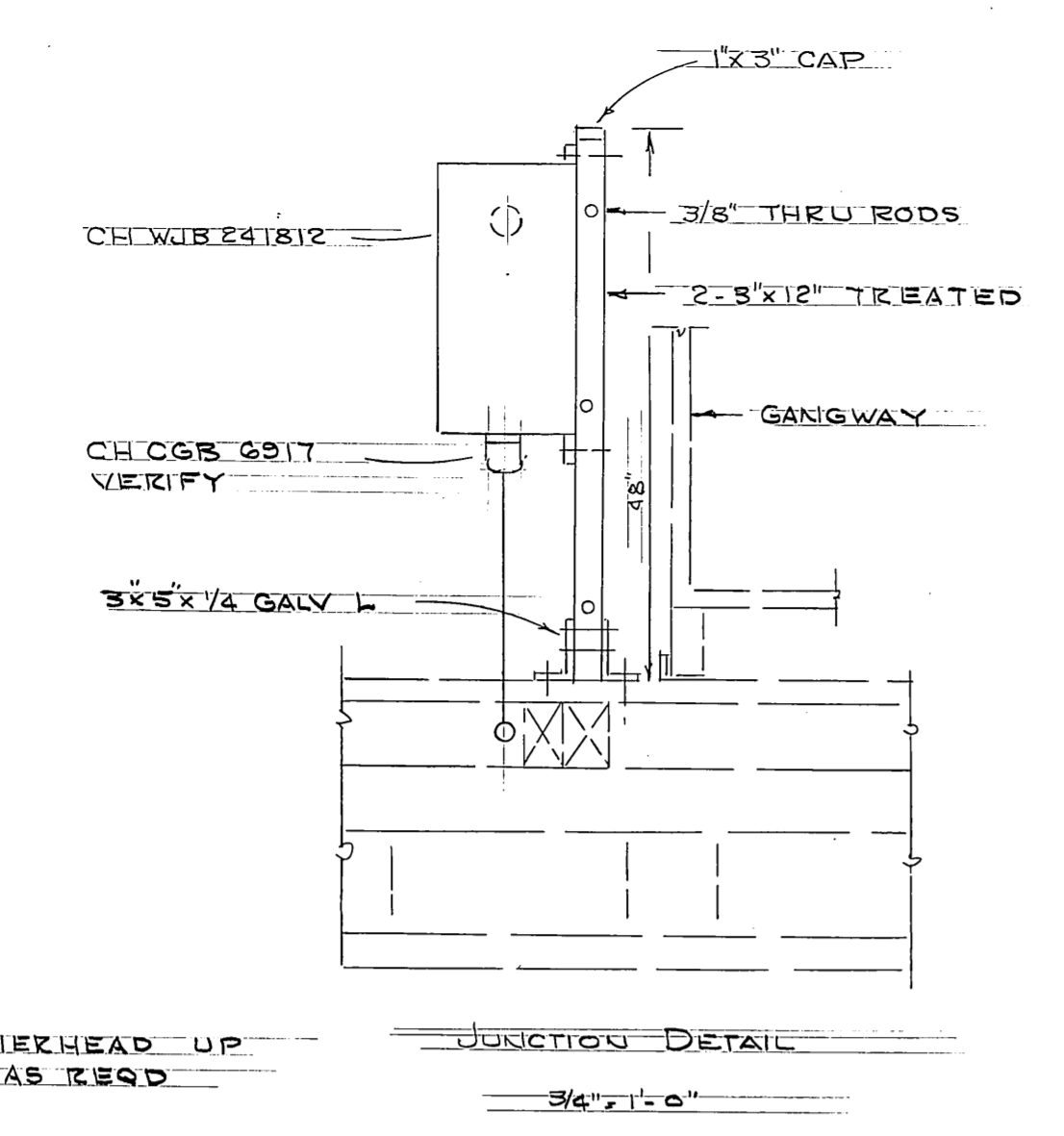
METER STAND  
3/4" x 1'-0"



- LEGEND**
- NEW WIRING OVERHEAD
  - - - " " BELOW FLOATS
  - TWIN OUTLET ON FLOATS - BULL RAIL
  - ⊙ PHOTO ELECTRIC
  - ⊙ JUNCTION
  - LIGHT FIXTURE
  - HOA. HAND-OFF-AUTOMATIC

Note: Electrical Work is an Alternate Bid Item.

STAMP 	DO NOT SCALE THIS DRAWING - USE DIMENSIONS	
	STATE OF ALASKA DEPARTMENT OF TRANSPORTATION AND PUBLIC FACILITIES DIVISION OF HARBOR DESIGN AND CONSTRUCTION ELECTRICAL INNER HARBOR Alaska	
SCALE NOTED DESIGNED LPL CHECKED _____	SURVEYED _____ DRAWN _____ DATE MAY 80	APPROVED Robert P. Beck CHIEF OF DESIGN
PROJECT NUMBER K 30131	SHEET 7 OF 8	



- NOTES**
1. PNL P TO INCL SQUARE D CLASS 8500 GROUND DETECTOR WITH GREEN LIGHT FOR NO FAULT & RED LIGHT FOR FAULT SET AT SA - CONNECT GROUND TO NEUTRAL AHEAD OF DETECTOR - MAIN WITH FUTURE SHUNT TRIP - BUT DO NOT CONNECT TO TRIP
  2. GROUND EACH SIDE OF GANGWAY WITH 2/0 TO SALT WATER -10'

TCL - POWER 515 KW  
 LIGHTS 15 KW  
 ADL WINTER 38.7 KW  
 SUMMER 12.7

ONE LINE DIAGRAM  
 NO SCALE

DETAIL ELEVATION  
 1/2\"/>

SECTION  
 1/2\"/>

STAMP		DO NOT SCALE THIS DRAWING - USE DIMENSIONS	
		STATE OF ALASKA DEPARTMENT OF TRANSPORTATION AND PUBLIC FACILITIES DIVISION OF HARBOR DESIGN AND CONSTRUCTION	
		ELECTRICAL INNER HARBOR	
WREANGELL		ALASKA	
SCALE NOTED	SURVEYED	APPROVED	
DESIGNED: LPL	DRAWN	<b>Robert P. Beck</b>	
CHECKED	DATE: MAY 80	CHIEF OF DESIGN	
PROJECT NUMBER: K 30/31	SHEET 8 OF 8		