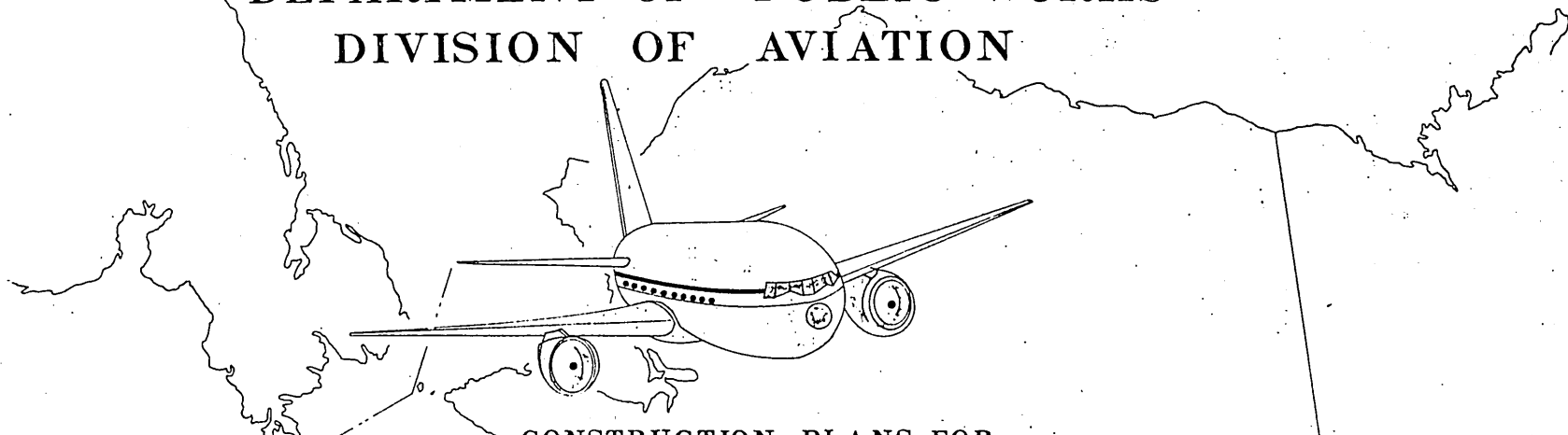


STATE OF ALASKA
DEPARTMENT OF PUBLIC WORKS
DIVISION OF AVIATION



CONSTRUCTION PLANS FOR

WRANGELL AIRPORT

STAGE NO. 2

RUNWAY EXTENSION AND RELATED IMPROVEMENTS

NOTE:

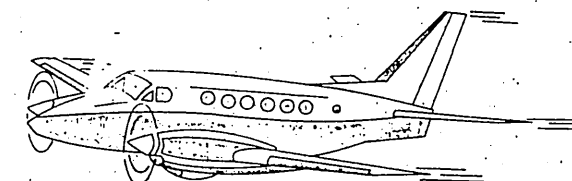
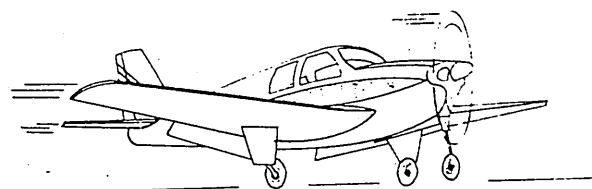
THIS IS A XEROX REDUCTION OF
THE ORIGINAL AND THEREFORE
THE SCALE IS APPROXIMATE.

AIRPORT DEVELOPMENT AID PROGRAM

SPONSORED BY

THE STATE OF ALASKA

A.D.A.P. NO. 8-02-0323-02



1973

APPROVED

ED GRANGER

DATE

8/31/73

DIRECTOR

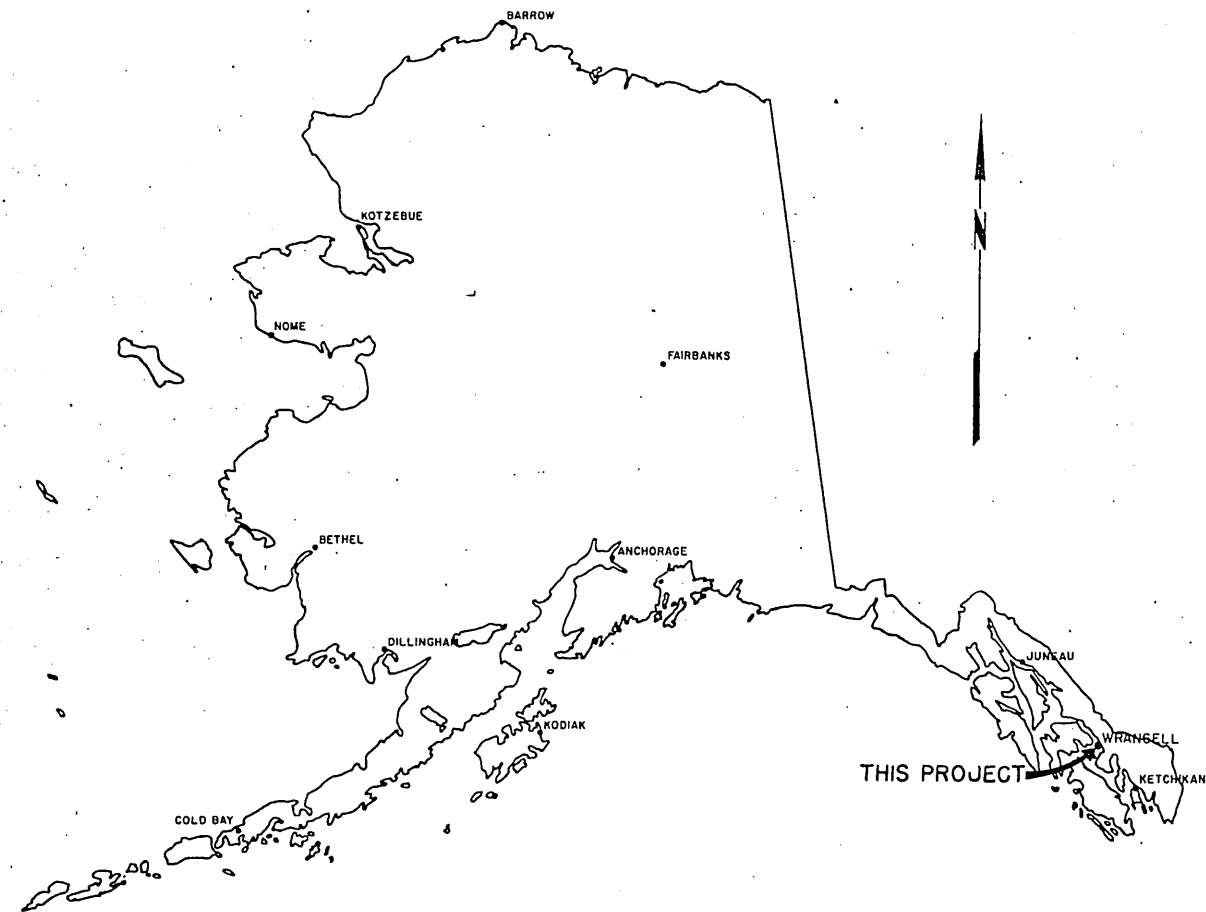
APPROVED

CLAYTON C. HUENERS

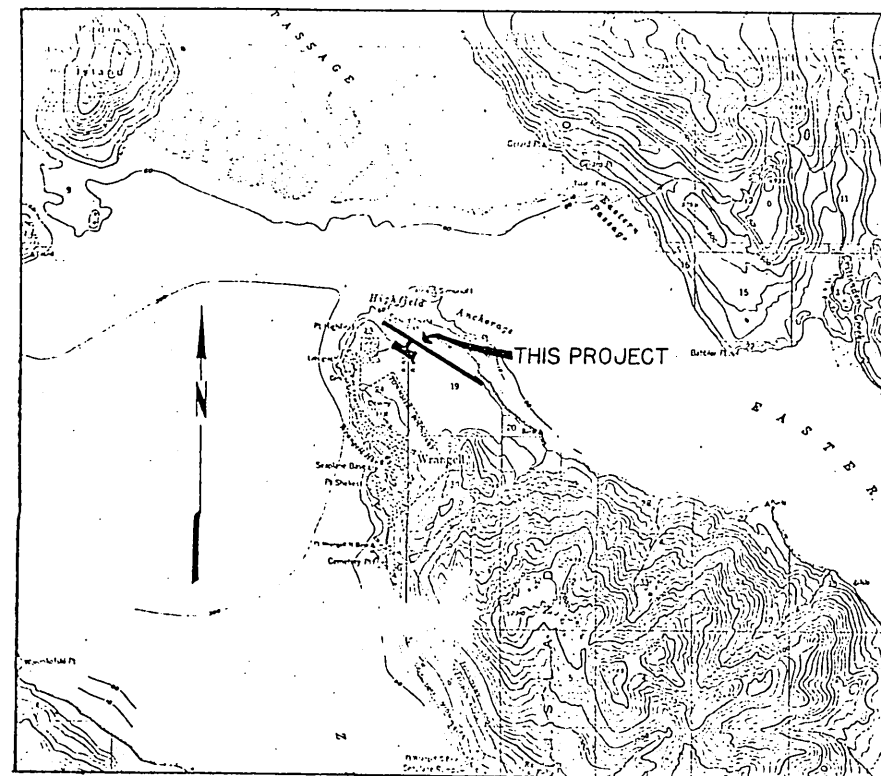
DATE

8/31/73

CHIEF DESIGN ENGINEER



LOCATION MAP



VICINITY MAP

SCALE 1" = 1 MILE

ESTIMATED QUANTITIES

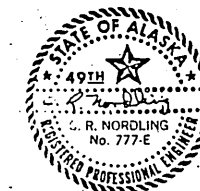
NO.	ITEM	QUANTITY	UNIT
1 A	CLEARING	32.3	ACRES
1 B	CLEARING & GRUBBING	7.7	ACRES
2	STRIPPING	108,091.0	CU. YD.
3	UNCLASSIFIED EXCAVATION	545,847.0	CU. YD.
4	ARMOR ROCK	14,160.0	CU. YD.
5	CRUSHED AGGREGATE BASE COURSE	26,905.0	CU. YD.
6 A	43" X 27" C. M. P. A.	100.0	LIN. FT.
6 B	50" X 31" C. M. P. A.	82.0	LIN. FT.
7	GUARD RAIL	237.5	LIN. FT.
8 A	6" ASBESTOS-CEMENT SEWER PIPE	960.0	LIN. FT.
8 B	6" CAST IRON SEWER PIPE	435.0	LIN. FT.
8 C	4" CEMENT ASBESTOS SERVICE	5	EACH
8 D	4" CAST IRON SERVICE	3	EACH
8 E	MANHOLES	1	EACH
8 F	MANHOLE RECONSTRUCTION	1	EACH
8 G	CLEANOUT	2	EACH
8 H	1,000 GAL. SEPTIC TANK	1	EACH
8 I	SAND FILTER BED	1	EACH
8 J	REMOVE & DISPOSE EXISTING SEWERAGE SYSTEM	1 JOB	LUMP SUM
9 A	20 KW CONSTANT CURRENT REGULATOR	1	EACH
9 B	4 KW CONSTANT CURRENT REGULATOR	1	EACH
9 C	HIGH INTENSITY RUNWAY MARKER LIGHTS	74	EACH
9 D	TAXIWAY MARKER LIGHTS	38	EACH
9 E	# 8, 5 KV TYPE 'C' UNDERGROUND CABLE	20,800	LIN. FT.
9 F	COPPER GROUND CONDUCTOR, #6 AWG	14,900	LIN. FT.
9 G	HANDHOLES	8	EACH
9 H	2" PVC JACKETED RIGID STEEL CONDUIT	4,500	LIN. FT.
9 I	2" PVC CONDUIT	14,425	LIN. FT.
9 J	APRON FLOOD LIGHTING	1 JOB	LUMP SUM
10	PREFABRICATED METAL HOUSING, FOUNDATION AND SERVICE	1 JOB	LUMP SUM
11	8-FOOT LIGHTED WIND CONE	1 JOB	LUMP SUM
12	36" ROTATING BEACON AND SERVICE	1 JOB	LUMP SUM

INDEX

SHEET TITLE	SHEET NO.
TITLE SHEET	1
LOCATION & VICINITY MAPS, INDEX & ESTIMATED QUANTITIES	2
TYPICAL SECTIONS	3
RUNWAY PLAN & PROFILE	4
RUNWAY PLAN & PROFILE.	5
TAXIWAY PLAN & PROFILE	6
PARKING PLAN & GRADING DETAIL	7
ACCESS ROAD PLAN & PROFILE	8
STABILIZATION BERM DETAILS	9
SEWER PLAN & PROFILE, FILTER BED DETAIL	10
SURVEY CONTROL DIAGRAM, CONSTRUCTION DETAILS	11
CONSTRUCTION DETAILS	12
RUNWAY CROSS SECTIONS	13 THRU 18
TAXIWAY CROSS SECTIONS	19
APRON CROSS SECTIONS	20, 21, 22
AIRPORT LIGHTING	23, 24, 25

NOTE:

THIS IS A XEROX REDUCTION OF THE ORIGINAL AND THEREFORE THE SCALE IS APPROXIMATE.



A. D. A. P. 8-02-0323-02

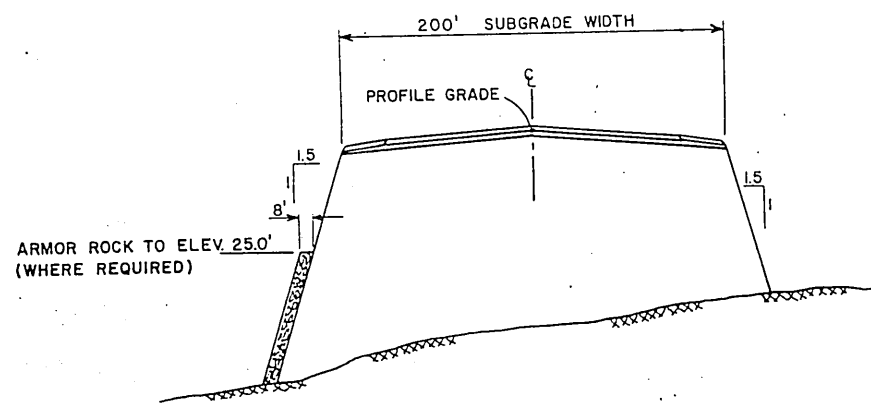
TONER & NORDLING REGISTERED ENGINEERS
JUNEAU, ALASKA

STATE OF ALASKA
DEPARTMENT OF PUBLIC WORKS
DIVISION OF AVIATION

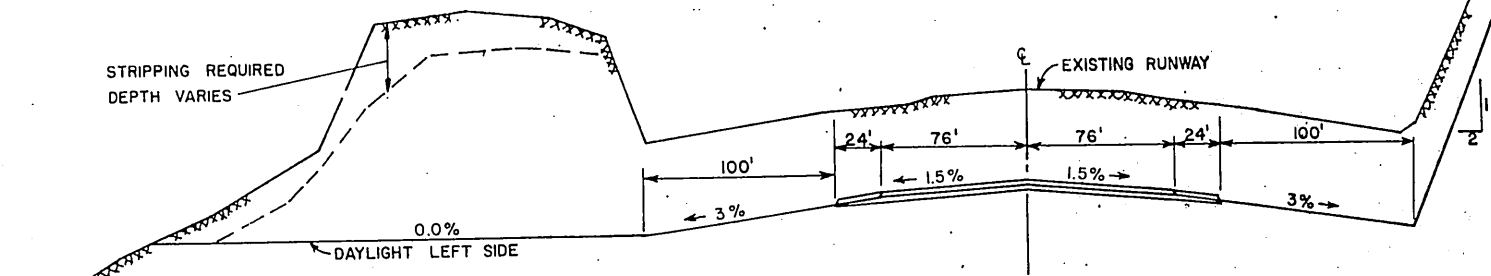
WRANGELL AIRPORT
STAGE 2
LOCATION & VICINITY MAPS, INDEX,
& ESTIMATE OF QUANTITIES

APPROVED	<i>Clayton C. Norderling</i>		CHIEF DESIGN ENGINEER
APPROVED	<i>Clayton C. Norderling</i>		CHIEF DESIGN ENGINEER
DESIGNED	J.M.L. J. BRIDE	TRUNK AIRPORTS ENGINEER	
BY	DATE	CHANGE	SCALE AS NOTED
	9/17/73	REVISED QUANTITIES	
		REVISIONS	
CHECKED	DATE	DRAWN	SHEET 2 OF 25
	JULY 73	J.P.D.	

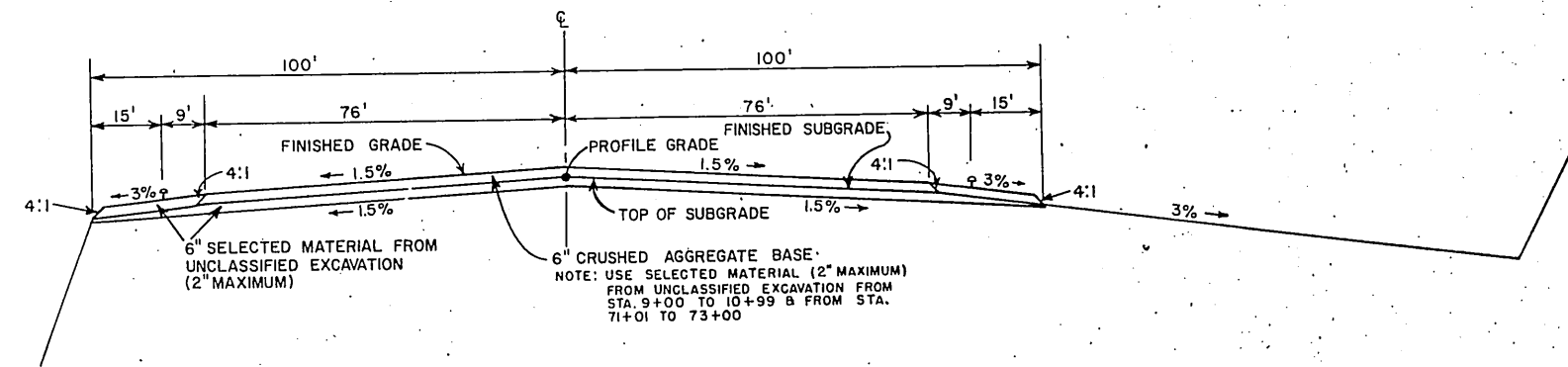
STRIPPING REQUIRED
DEPTH VARIES



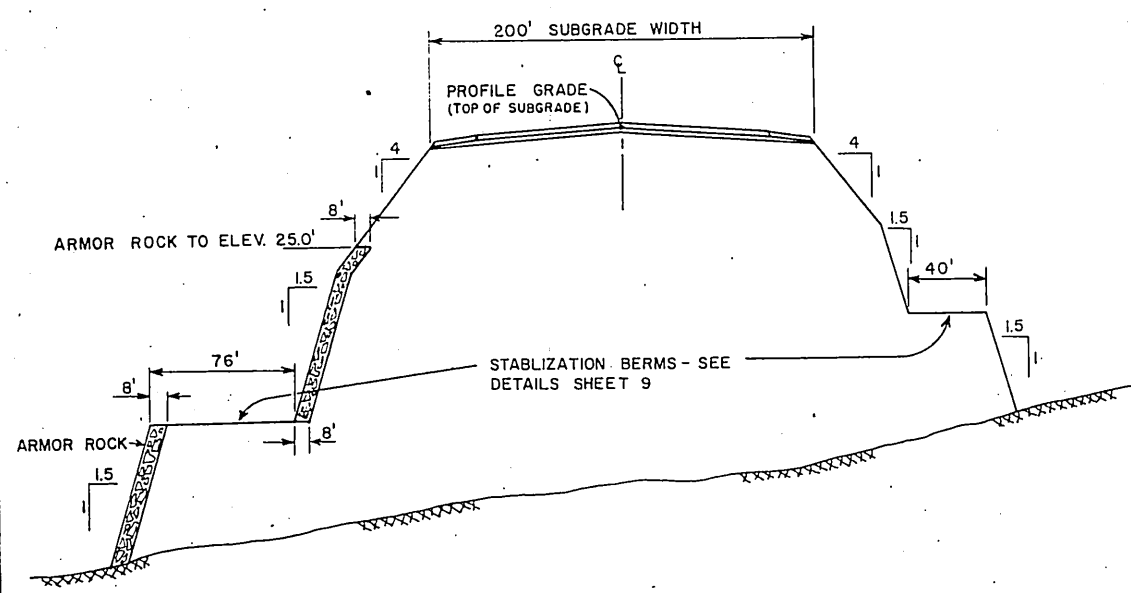
TYPICAL RUNWAY FILL SECTION
STA. 15+00 TO STA. 73+00
SCALE: HOR.-1"=50'
VERT.-1"=10'



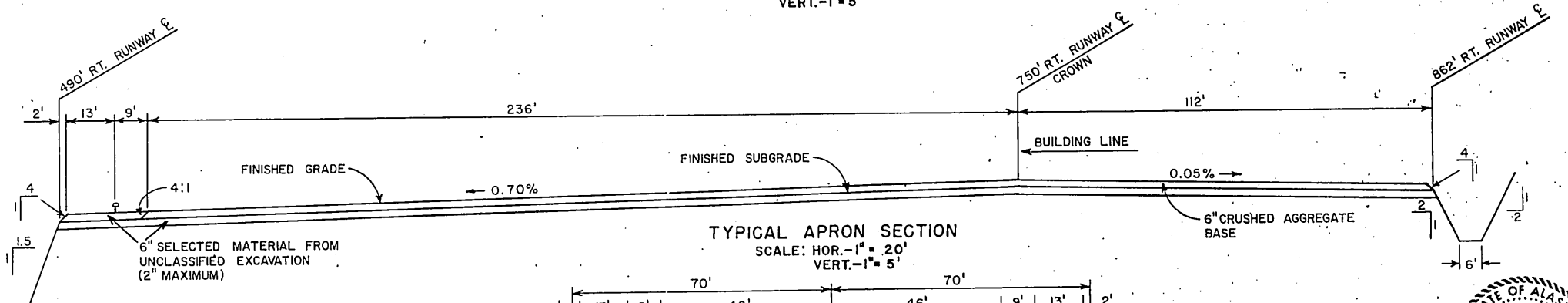
TYPICAL RUNWAY CUT SECTION
SCALE: HOR.-1"=50'
VERT.-1"=10'



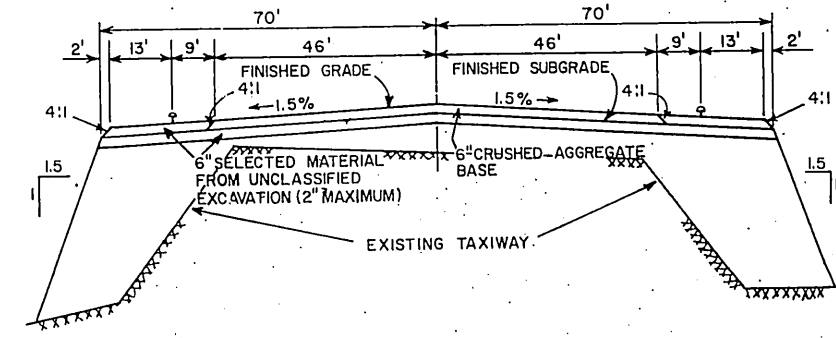
TYPICAL SECTION
RUNWAY SURFACING
SCALE: HOR.-1"=20'
VERT.-1"=5'



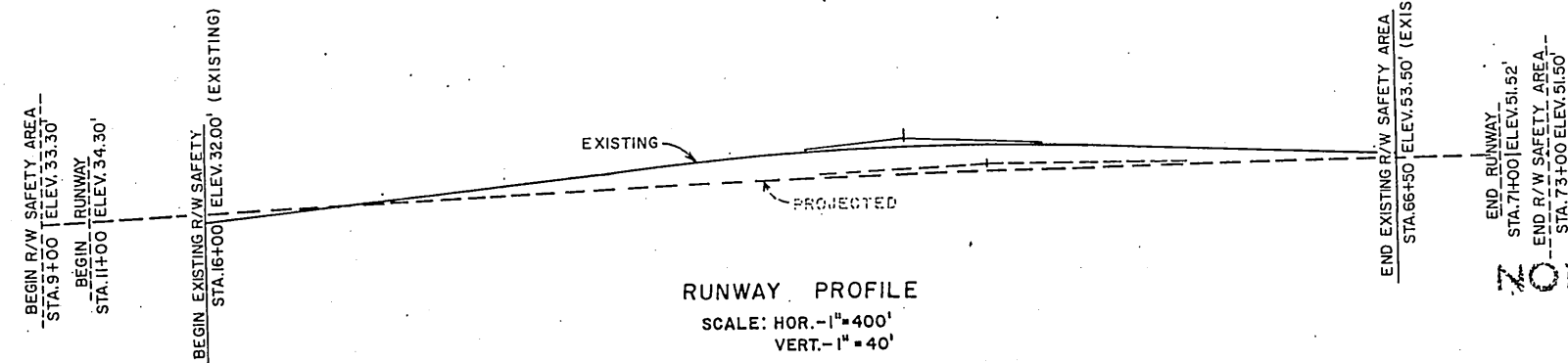
TYPICAL RUNWAY FILL SECTION
STA. 9+00 TO STA. 15+00
SCALE: HOR.-1"=50'
VERT.-1"=10'



TYPICAL APRON SECTION
SCALE: HOR.-1"=20'
VERT.-1"=5'

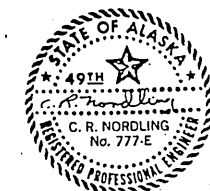


TYPICAL TAXIWAY SECTION
SCALE: HOR.-1"=20'
VERT.-1"=5'



RUNWAY PROFILE
SCALE: HOR.-1"=400'
VERT.-1"=40'

NOTE: THIS IS A XEROX REDUCTION OF THE ORIGINAL AND THEREFORE THE SCALE IS APPROXIMATE.

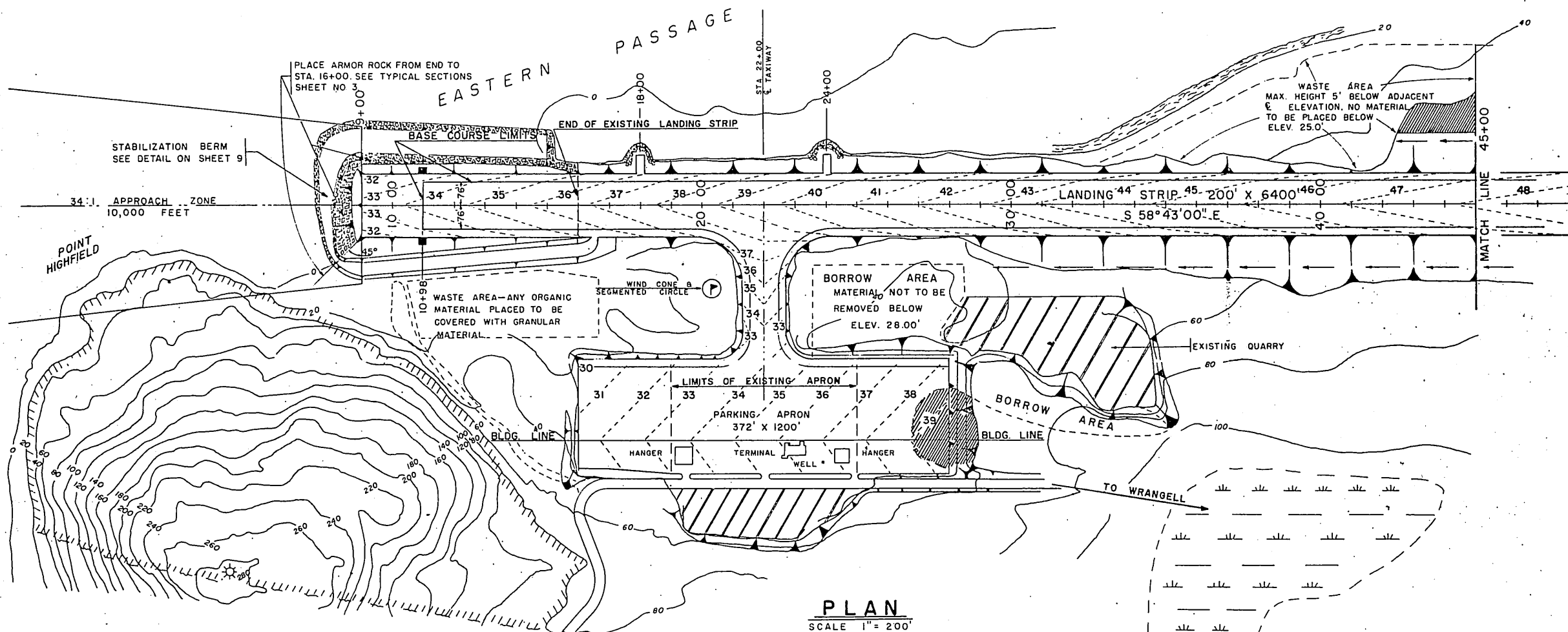


A.D.A.P. 8-02-0323-02
TONER & NORDLING REGISTERED ENGINEERS
JUNEAU, ALASKA
STATE OF ALASKA
DEPARTMENT OF PUBLIC WORKS
DIVISION OF AVIATION
WRANGELL AIRPORT
STAGE 2
TYPICAL SECTIONS

APPROVED	<i>Clayton C. Huemmer</i>		CHIEF DESIGN ENGINEER
APPROVED	<i>James J. Rhode</i>		TRUNK AIRPORTS ENGINEER
DATE	9/17/73	REVISIONS	BY
DATE		CHANGE	
SCALE	AS NOTED	DESIGNED CRN	DRAWN GM
CHECKED	RN	DATE	JULY 73
			SHEET 3 OF 25

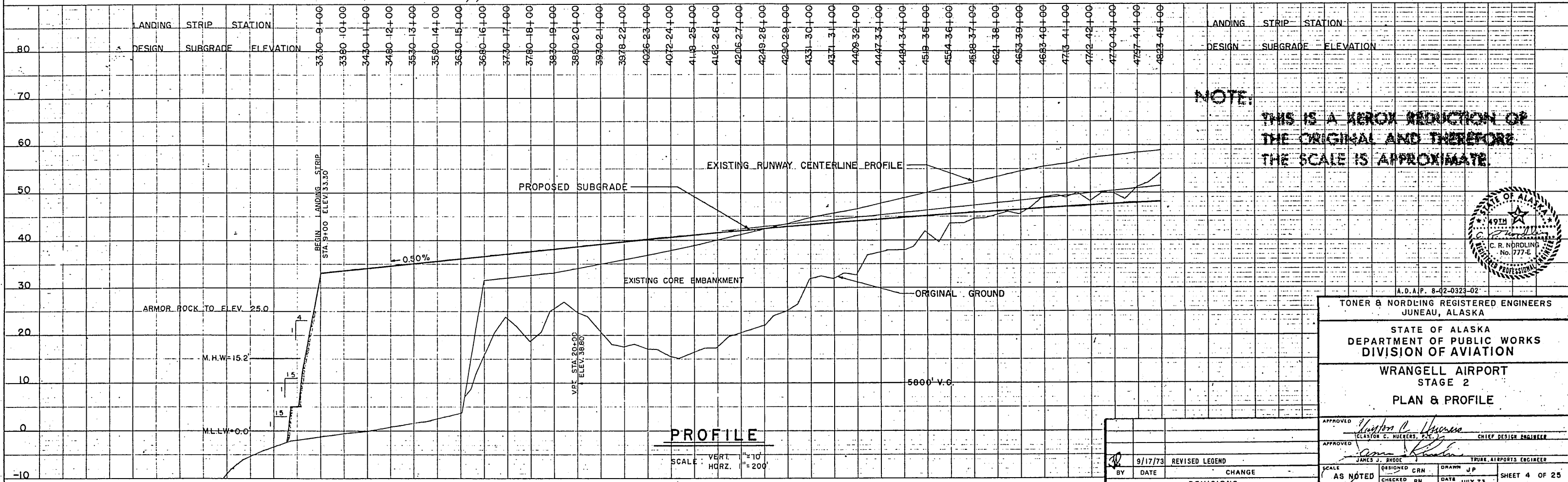
DATE	
BY	
REVISION	
NOTED	
NOTE BOOK	
NO.	

DATE	
BY	
REVISION	
NOTED	
NOTE BOOK	
NO.	



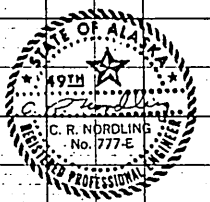
PLAN
SCALE 1" = 200'

LEGEND	
CLEARING & GRUBBING	
MUSKEG	
CONTRACTORS WORKING AREA	
CONTOURS	
VASI PADS (24' x 55')	
REIL PADS (24' x 20')	
ROTATING BEACON	
CLEARING FALLEN TIMBER	
ARMOR ROCK	



PROFILE
SCALE: VERT. 1" = 10'
HGRZ. 1" = 200'

NOTE:
THIS IS A XEROX REDUCTION OF THE ORIGINAL AND THEREFORE THE SCALE IS APPROXIMATE.

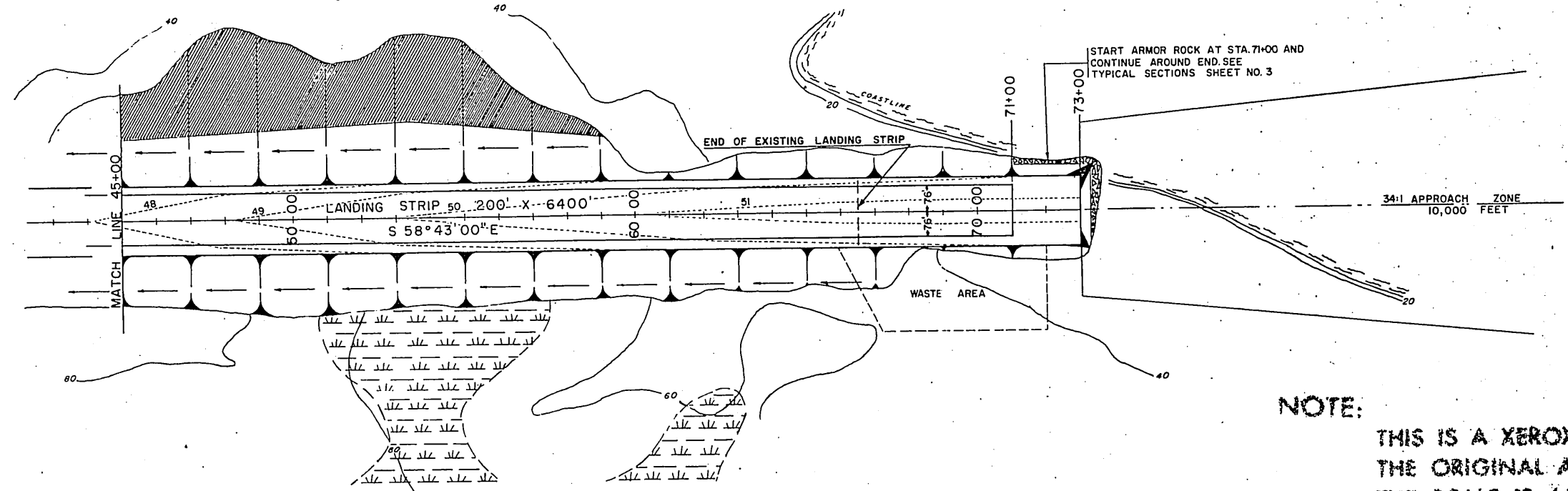


A.D.A.P. 8-02-0323-02
TONER & NORDLING REGISTERED ENGINEERS
 JUNEAU, ALASKA
 STATE OF ALASKA
 DEPARTMENT OF PUBLIC WORKS
 DIVISION OF AVIATION
WRANGELL AIRPORT
 STAGE 2
PLAN & PROFILE

APPROVED	<i>Clayton C. Hueters, P.E.</i>	CHIEF DESIGN ENGINEER
APPROVED	<i>James J. Brode</i>	TRUE AIRPORTS ENGINEER
BY	9/17/73	REVISOR
DATE		CHANGE
AS NOTED		REVISIONS
SCALE	DESIGNED CRN	DRAWN J.P.
CHECKED RN	DATE JULY 73	SHEET 4 OF 25

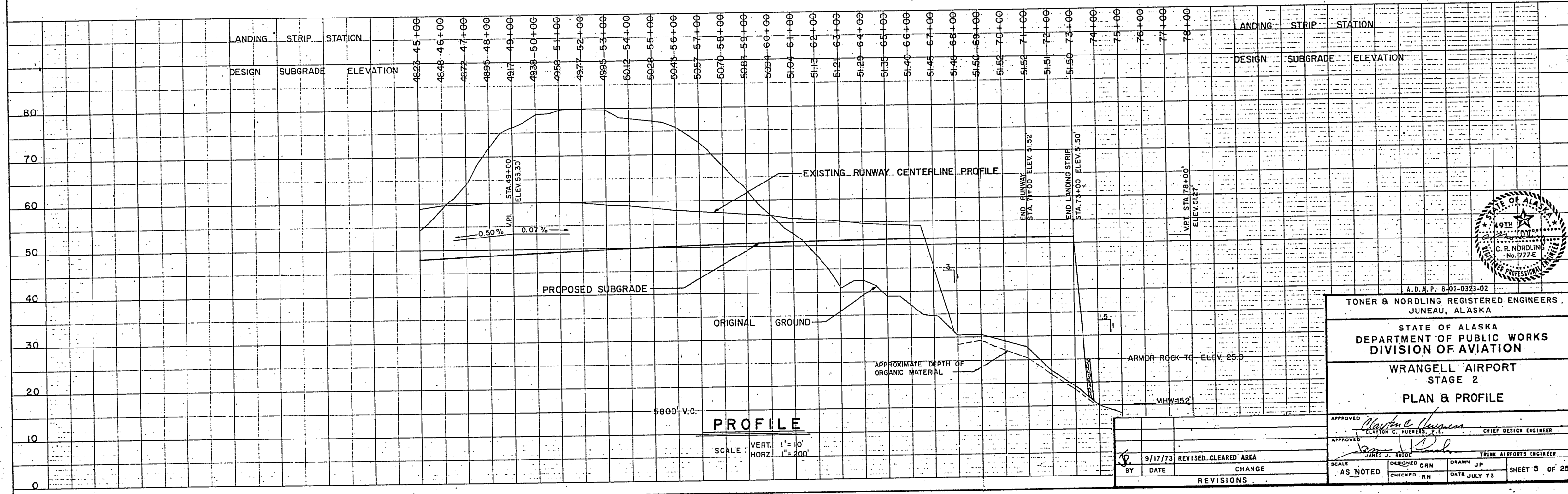
DATE	
BY	
REVISIONS	
NO. OF WAY CHECKED	
ALIGNED CHECKED	
NOTE BOOK	
No.	

DATE	
BY	
REVISIONS	
NO. OF WAY CHECKED	
ALIGNED CHECKED	
NOTE BOOK	
No.	

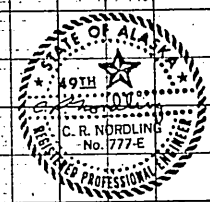


PLAN
SCALE 1" = 200'

NOTE:
THIS IS A XEROX REDUCTION OF THE ORIGINAL AND THEREFORE THE SCALE IS APPROXIMATE.

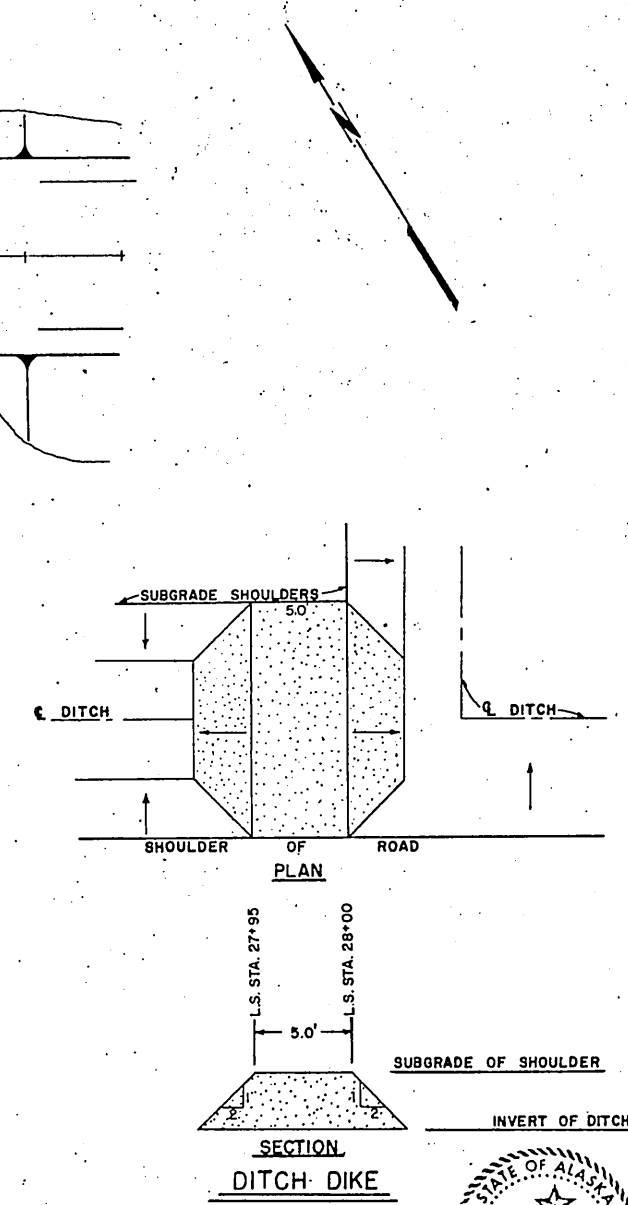
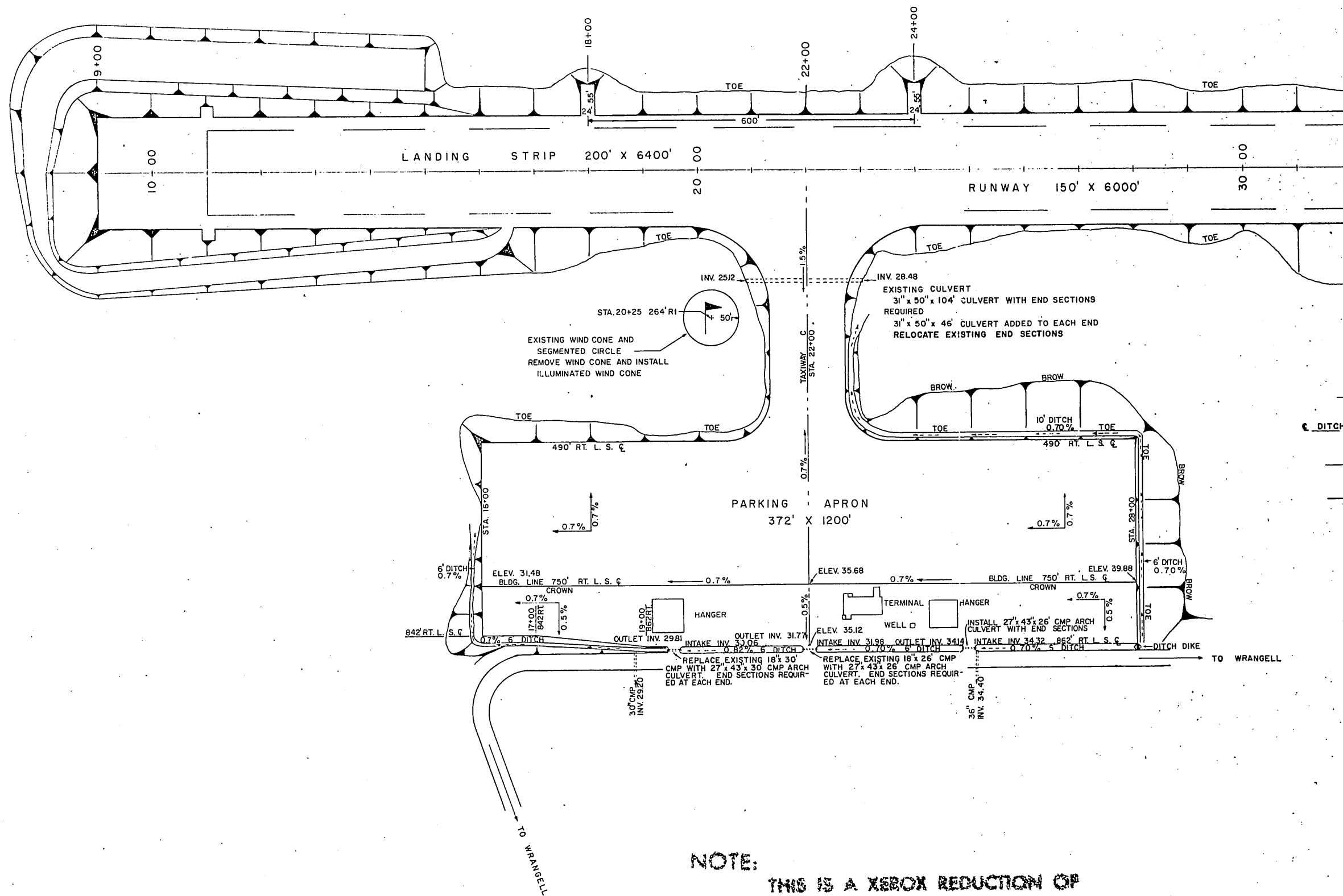


PROFILE
SCALE: VERT. 1" = 10' HQRZ. 1" = 200'

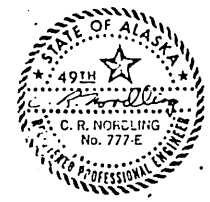


A. D. A. P. - 8-02-0323-02
TONER & NORDLING REGISTERED ENGINEERS
 JUNEAU, ALASKA
 STATE OF ALASKA
 DEPARTMENT OF PUBLIC WORKS
 DIVISION OF AVIATION
 WRANGELL AIRPORT
 STAGE 2
 PLAN & PROFILE

APPROVED	<i>Clayton C. Hueners, P.E.</i>	CHIEF DESIGN ENGINEER
APPROVED	<i>James J. Rhoad</i>	TRUNK AIRPORTS ENGINEER
SCALE	AS NOTED	DEVELOPED CRN
CHECKED	RM	DATE JULY 73
BY	DATE	REVISIONS
	9/17/73	REVISED, CLEARED AREA
		CHANGE
		REVISIONS



NOTE:
THIS IS A XEROX REDUCTION OF
THE ORIGINAL AND THEREFORE
THE SCALE IS APPROXIMATE.

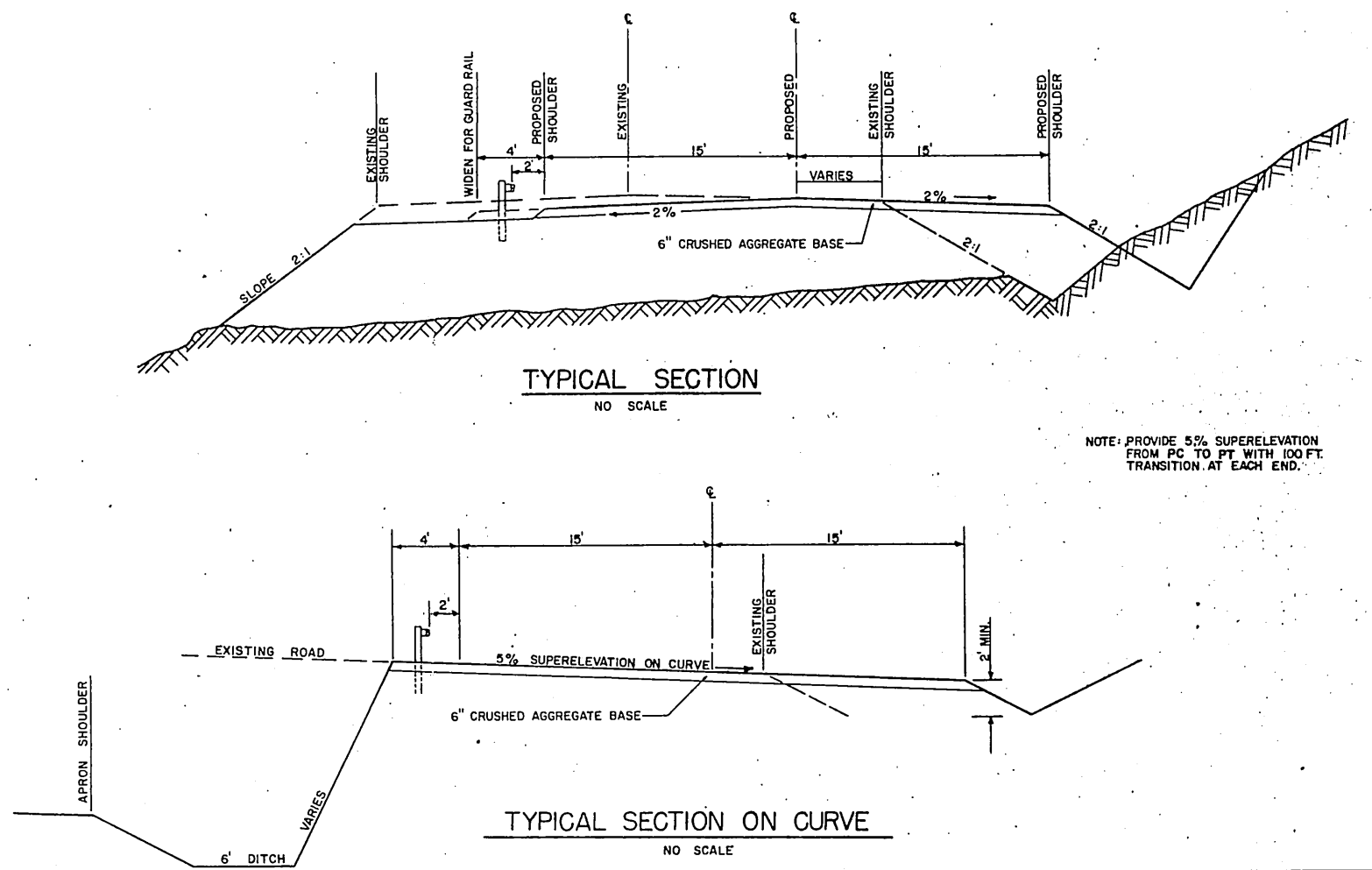
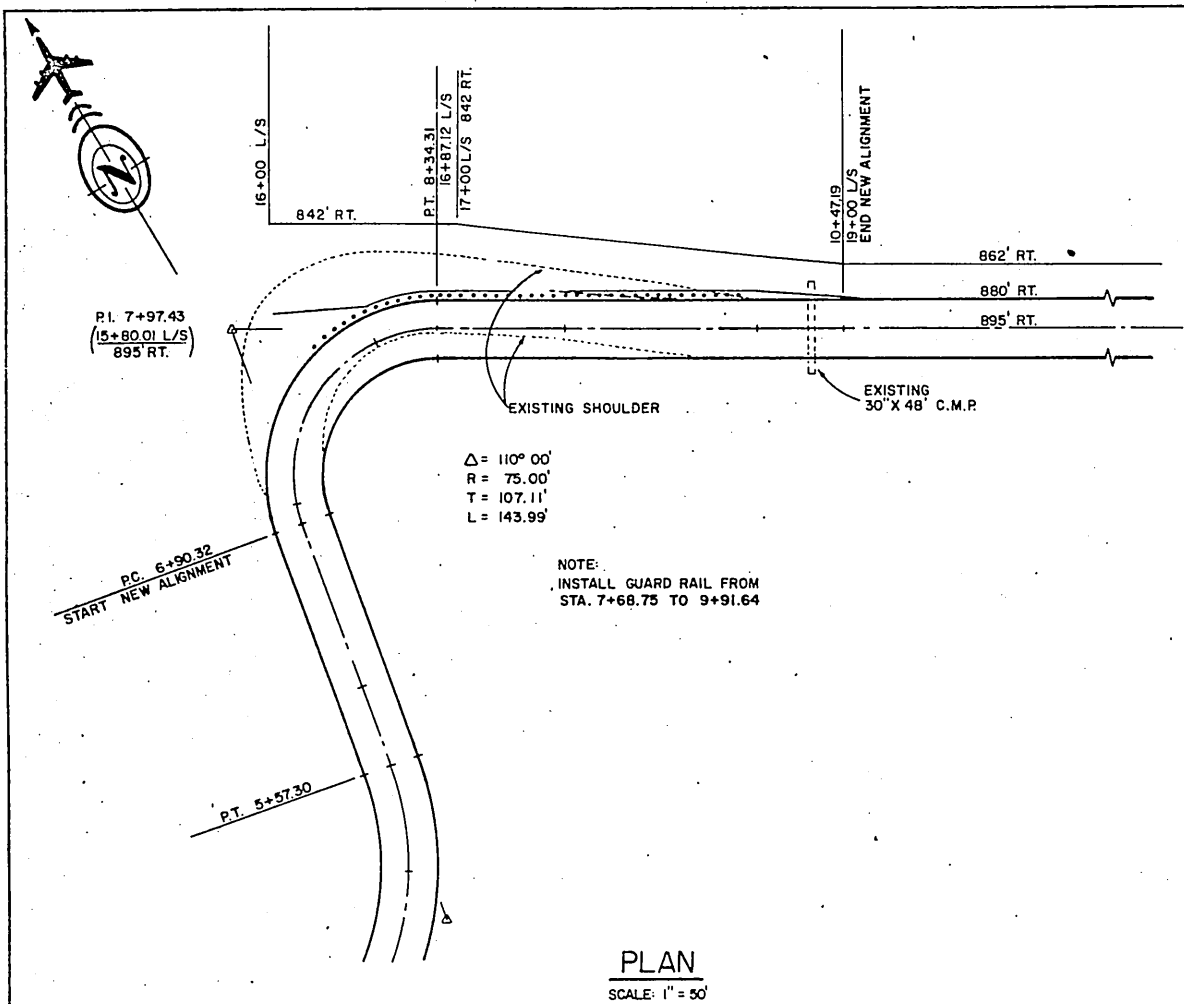


A. D. A. P. 8-02-0323-02
 TONER & NORDLING REGISTERED ENGINEERS
 JUNEAU, ALASKA
 STATE OF ALASKA
 DEPARTMENT OF PUBLIC WORKS
 DIVISION OF AVIATION
 WRANGELL AIRPORT
 STAGE 2
 PARKING APRON PLAN
 AND GRADING DETAIL

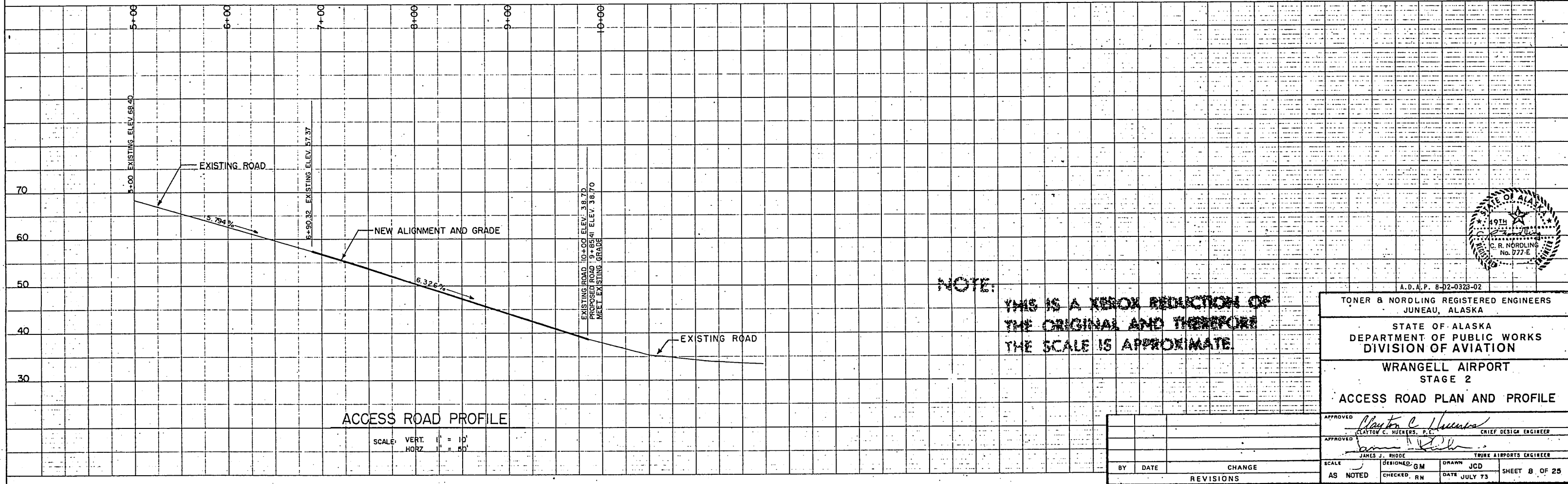
APPROVED	<i>Clayton C. Hueters, P.E.</i>	CLAYTON C. HUETERS, P.E.	CHIEF DESIGN ENGINEER
APPROVED	<i>James J. Rhoads</i>	JAMES J. RHOADS	TRUNK AIRPORTS ENGINEER
BY	DATE	CHANGE	REVISIONS
SCALE	1"=100'	DESIGNED GM	DRAWN JP
CHECKED RN	DATE JULY 73	SHEET 7 OF 25	

DATE	
BY	
SAVED	
PLANNED	
NOTED	
NO. OF REVISIONS	
NO.	

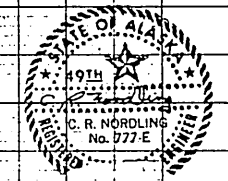
DATE	
BY	
SAVED	
PLANNED	
NOTED	
NO. OF REVISIONS	
NO.	



NOTE: PROVIDE 5% SUPERELEVATION FROM PC TO PT WITH 100 FT. TRANSITION AT EACH END.



NOTE:
THIS IS A XEROX REDUCTION OF THE ORIGINAL AND THEREFORE THE SCALE IS APPROXIMATE.



A.D.A.P. 8-02-0323-02

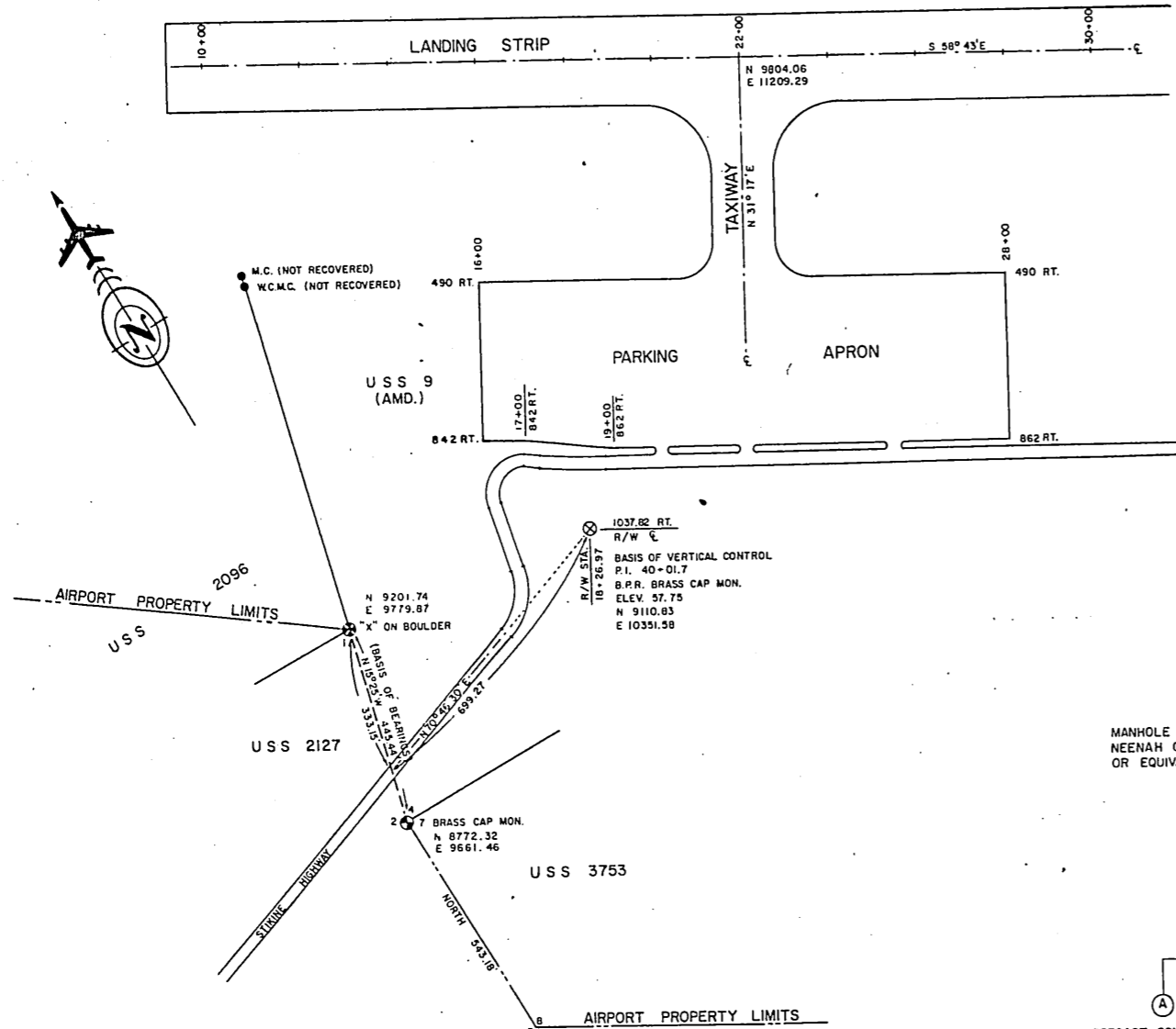
TONER B NORDLING REGISTERED ENGINEERS
JUNEAU, ALASKA

STATE OF ALASKA
DEPARTMENT OF PUBLIC WORKS
DIVISION OF AVIATION

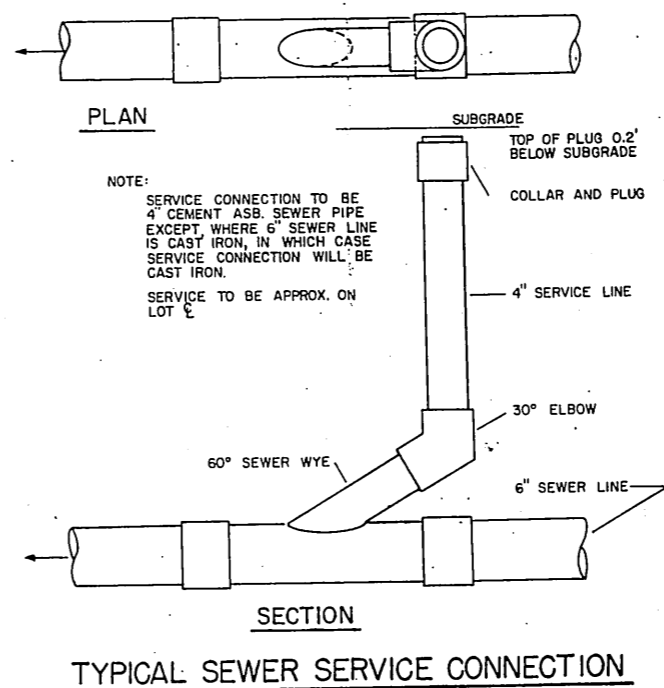
WRANGELL AIRPORT
STAGE 2

ACCESS ROAD PLAN AND PROFILE

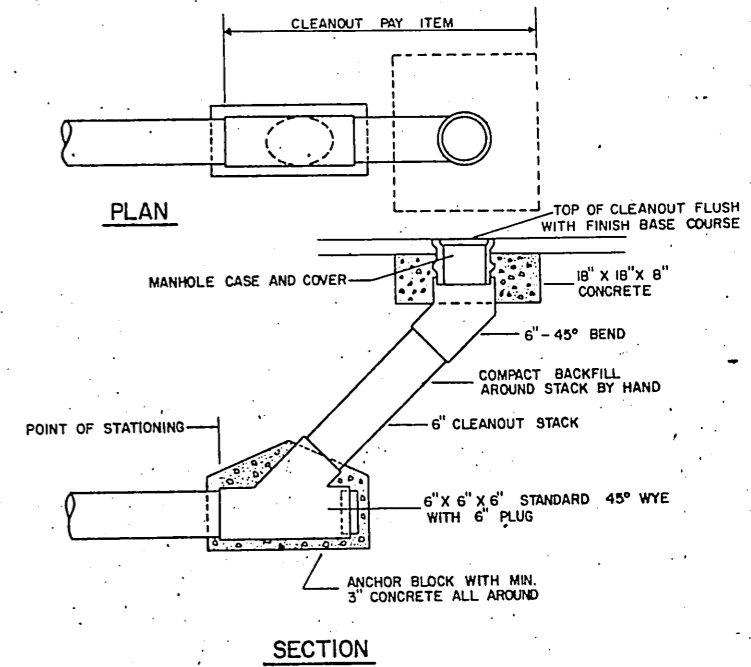
APPROVED	<i>Clayton C. Hueters</i>	CLAYTON C. HUETERS, P.E.	CHIEF DESIGN ENGINEER
APPROVED	<i>James J. Rhode</i>	JAMES J. RHODE	TRUCK AIRPORTS ENGINEER
SCALE	AS NOTED	DESIGNED: GM	DRAWN: JCD
		CHECKED: RN	DATE: JULY 73
BY	DATE	CHANGE	REVISIONS



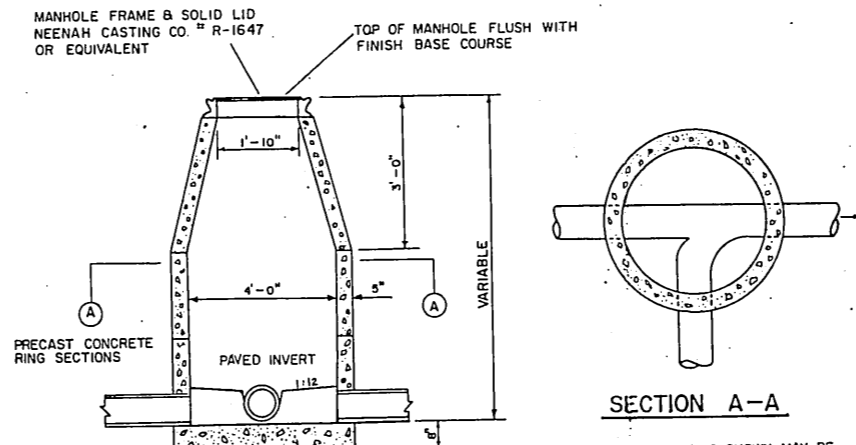
SURVEY CONTROL DIAGRAM
SCALE: 1" = 200'



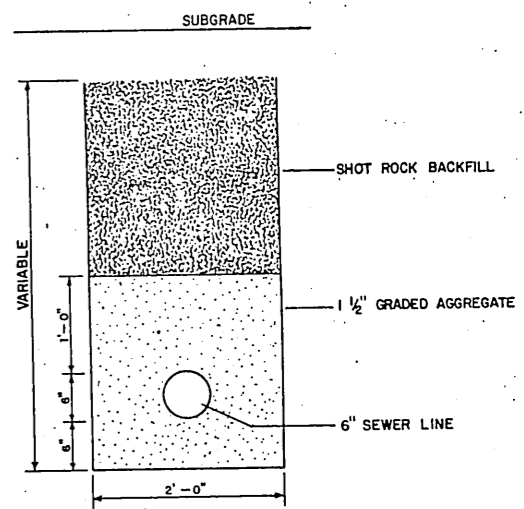
TYPICAL SEWER SERVICE CONNECTION



STANDARD CLEANOUT



STANDARD MANHOLE DETAIL



SEWER LINE TRENCH

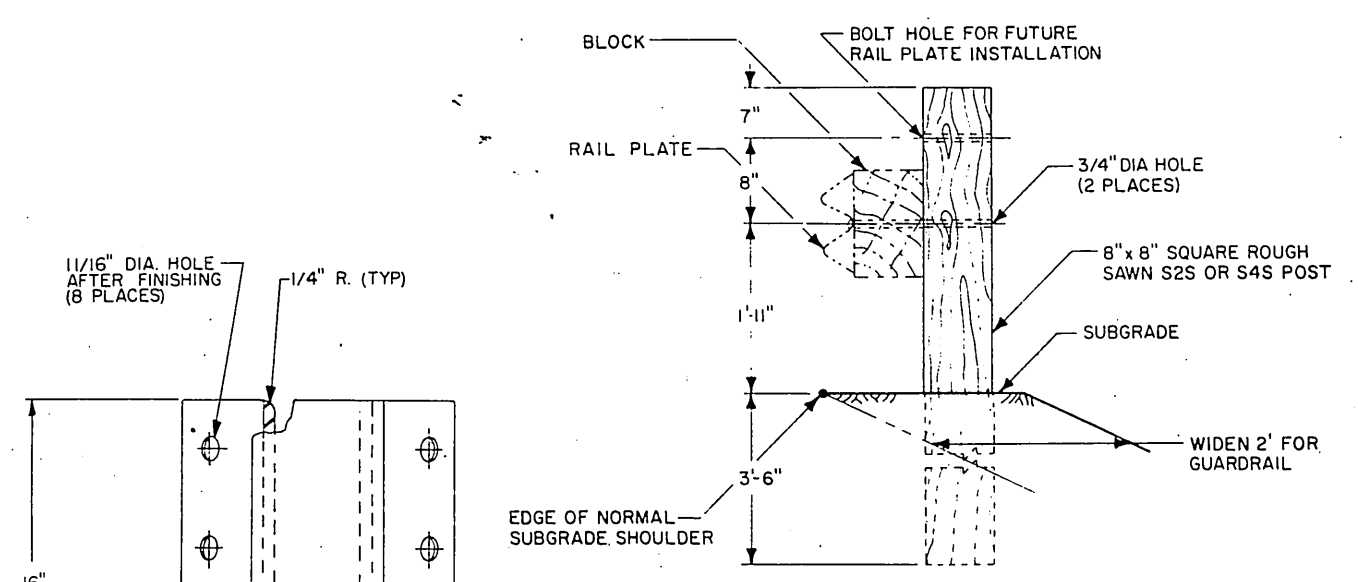
NOTE:
THIS IS A XEROX REDUCTION OF THE ORIGINAL AND THEREFORE THE SCALE IS APPROXIMATE.

BY		DATE	CHANGE	AS NOTED	DESIGNED G.M.	CHECKED R.N.	DRAWN J.C.D.	DATE JULY 73	SHEET 11 OF 25.
REVISIONS									

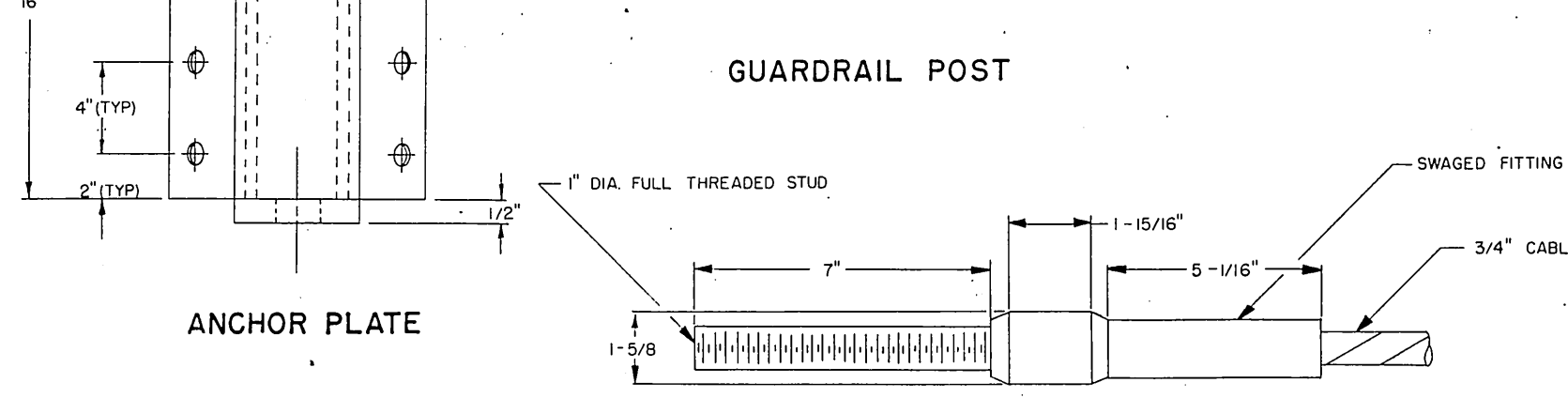


A. D. A. P. 8-02-0323-02
TONER & NORDLING REGISTERED ENGINEERS
 JUNEAU, ALASKA
 STATE OF ALASKA
 DEPARTMENT OF PUBLIC WORKS
 DIVISION OF AVIATION
 WRANGELL AIRPORT
 STAGE 2
 SURVEY CONTROL DIAGRAM
 CONSTRUCTION DETAILS

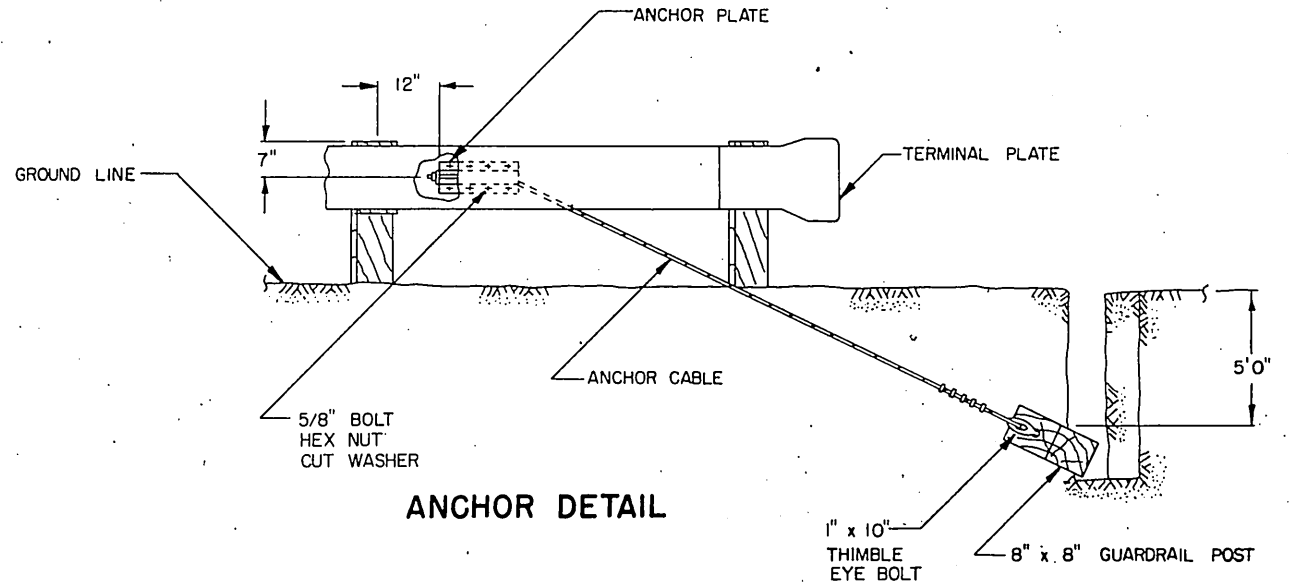
APPROVED *Clayton C. Hueters*
 CLAYTON C. HUETERS, P.E. CHIEF DESIGN ENGINEER
 APPROVED *James S. Rhode*
 JAMES S. RHODE TRUCK AIRPORTS ENGINEER
 SCALE: AS NOTED
 DESIGNED G.M.
 CHECKED R.N.
 DRAWN J.C.D.
 DATE JULY 73



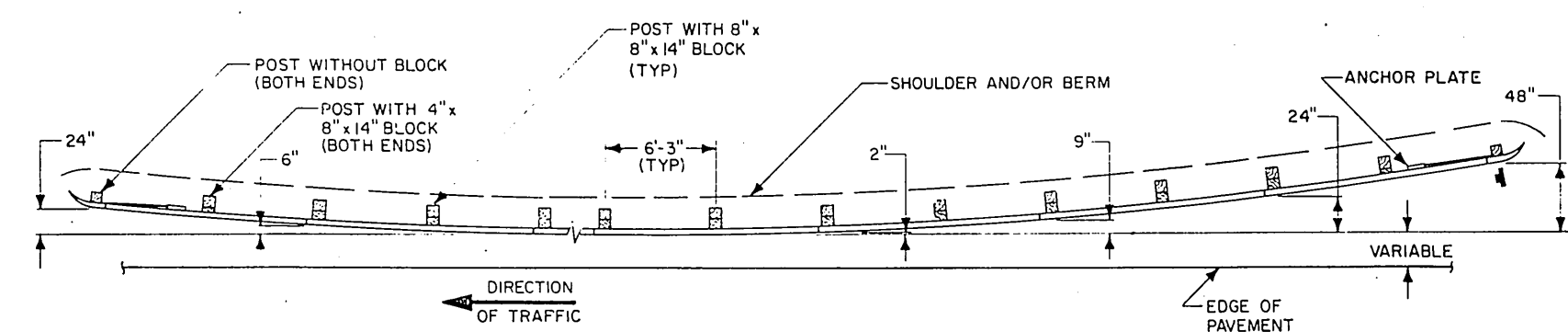
GUARDRAIL POST



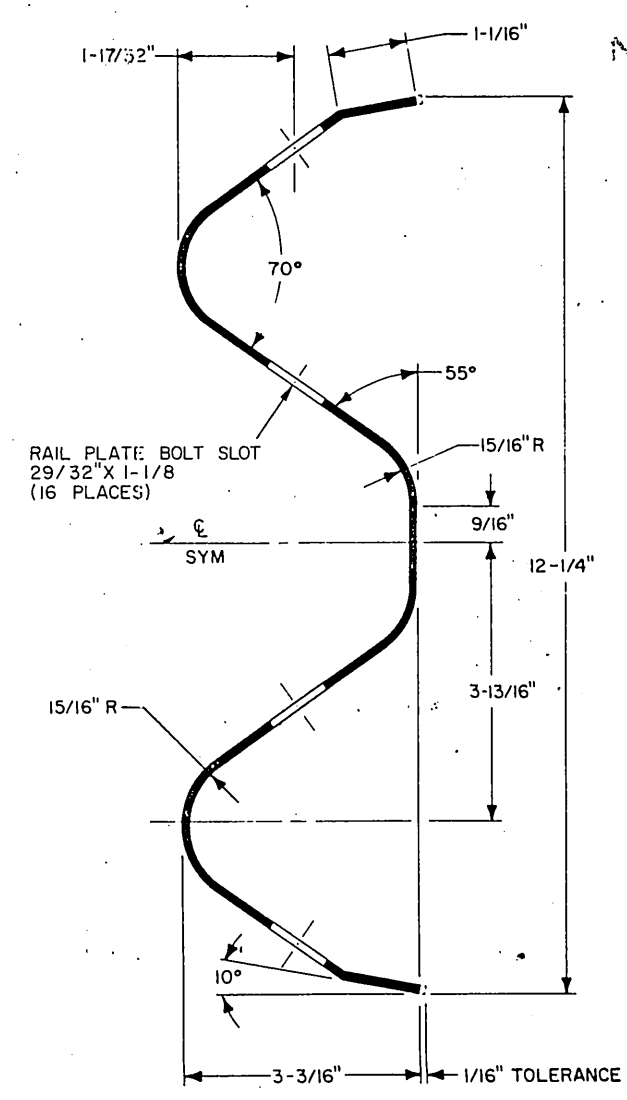
ANCHOR CABLE



ANCHOR DETAIL



PLAN VIEW

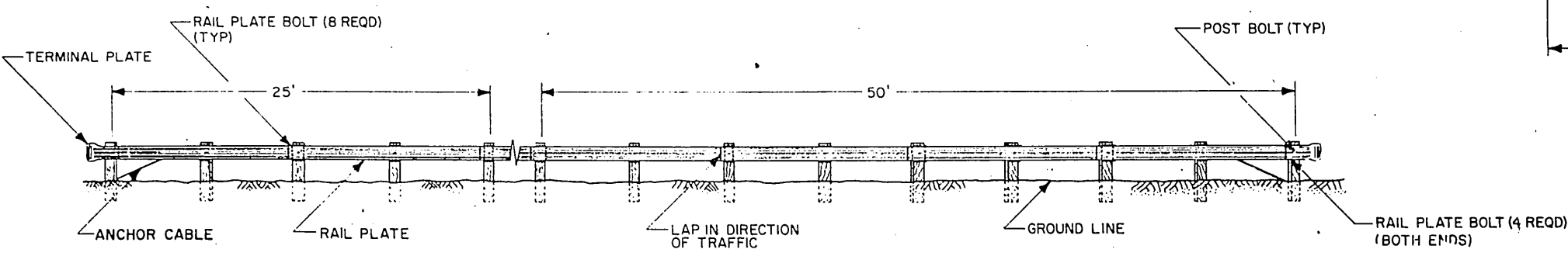


RAIL PLATE

NOTE:
THIS IS A XEROX REDUCTION OF THE ORIGINAL AND THEREFORE THE SCALE IS APPROXIMATE.

GUARDRAIL GENERAL NOTES:

- BOLT HEAD AND WASHER SHALL BE ON FRONT SIDE OF RAIL PLATE.
- ANCHOR CABLE TO BE PARALLEL TO RAIL FOR STRAIGHT RUNS OF GUARDRAIL. IF GUARDRAIL IS CURVED ANCHOR CABLE MAY HAVE AN ANGLE POINT AT ANCHOR PLATE.
- ANCHOR CABLE SHALL BE 3/4" PREFORMED 6x9, WIRE STRAND CORE OR INDEPENDENT WIRE ROPE CORE (LWRC) GALVANIZED RIGHT REGULAR LAY MANUFACTURED OF IMPROVED PLOW STEEL WITH MINIMUM BREAKING STRENGTH OF 21.4 TONS.
- THE SHAGED FITTING AND STUD ASSEMBLY SHALL BE OF STEEL CONFORMING TO THE REQUIREMENTS OF AMERICAN IRON AND STEEL INSTITUTE DESIGNATION C1035 AND SHALL BE ANNEALED GALVANIZED, SUITABLE FOR COLD SWAGING. THE SHAGED FITTING AND STUD ASSEMBLY SHALL DEVELOPE 100% OF THE BREAKING STRENGTH OF THE ANCHOR CABLE.
- ALL WELDS SHALL CONFORM TO AMERICAN WELDING SOCIETY SPECIFICATIONS.
- ALL PARTS TO BE GALVANIZED AFTER FABRICATION.
- RAIL PLATE AND TERMINAL PLATE SHALL BE 12 GAGE GALVANIZED STEEL.
- RAIL PLATES TO FIT 150" RADII OR LESS SHALL BE SHOP CURVED.
- GUARDRAIL SHALL BE INSTALLED WITH 6'-3" POST SPACING AND RAIL PLATES SHALL BE FABRICATED FOR THIS SPACING.
- A TOLERANCE OF 3/16" WILL BE ALLOWED ON ALL RAIL PLATE AND TERMINAL PLATE DIMENSIONS. A SCREW HEAD TYPE RAIL PLATE BOLT WITHOUT THE SHOULDER BUT OTHERWISE OF THE SAME GENERAL DIMENSIONS MAY BE USED IN LIEU OF THE ONE SHOWN.



ELEVATION VIEW

A.D.A.P. 8-02-0323-02

TONER & NORDLING REGISTERED ENGINEERS
JUNEAU, ALASKA

STATE OF ALASKA
DEPARTMENT OF PUBLIC WORKS
DIVISION OF AVIATION

WRANGELL AIRPORT
STAGE 2
CONSTRUCTION DETAILS

APPROVED *Clayton C. Hueners*
CLAYTON C. HUENERS, P.E. CHIEF DESIGN ENGINEER

APPROVED *James J. Rhode*
JAMES J. RHODE TRAFFIC AIRPORTS ENGINEER

BY	DATE	CHANGE

SCALE NO. SCALE

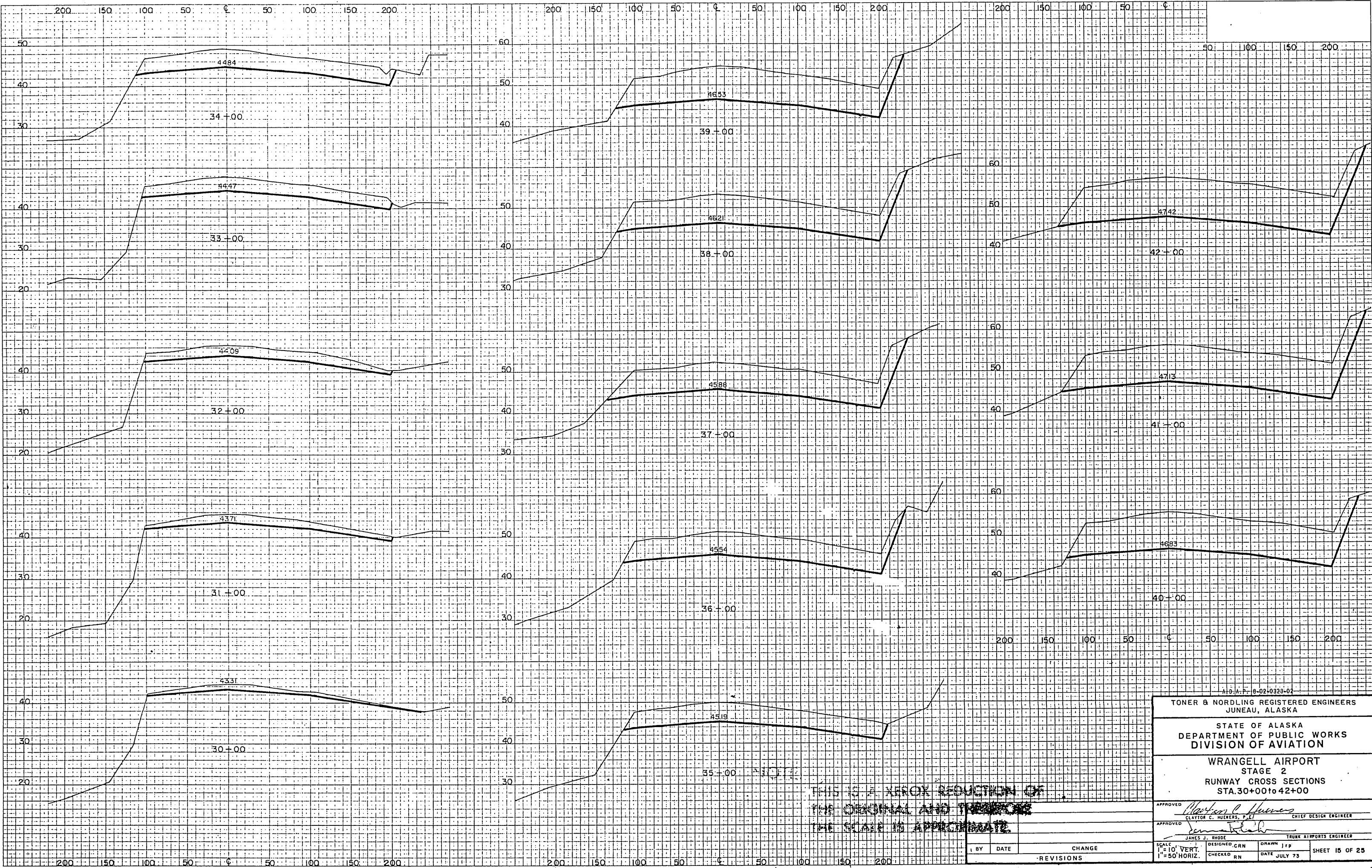
DESIGNED CHECKED RN

DRAWN DATE JULY 73

SHEET 12 OF 25

FINAL SURVEY
 SURVEYED BY
 DATE
 NOTE BOOK NO.
 AREA CHECKED

ORIGINAL SURVEY
 SURVEYED BY
 DATE
 NOTE BOOK NO.
 AREA CHECKED



THIS IS A XEROX REDUCTION OF
 THE ORIGINAL AND THEREFORE
 THE SCALE IS APPROXIMATE

A.D.A.P. - 6-02-0323-02

TONER & NORDLING REGISTERED ENGINEERS
 JUNEAU, ALASKA

STATE OF ALASKA
 DEPARTMENT OF PUBLIC WORKS
 DIVISION OF AVIATION

WRANGELL AIRPORT
 STAGE 2
 RUNWAY CROSS SECTIONS
 STA. 30+00 TO 42+00

APPROVED *Clayton C. Hueners* CHIEF DESIGN ENGINEER
 CLAYTON C. HUENERS, P.E.T.

APPROVED *James J. Rhode* TRUNK AIRPORTS ENGINEER
 JAMES J. RHODE

BY	DATE	CHANGE
-REVISIONS-		

SCALE:
 1" = 10' VERT.
 1" = 50' HORIZ.

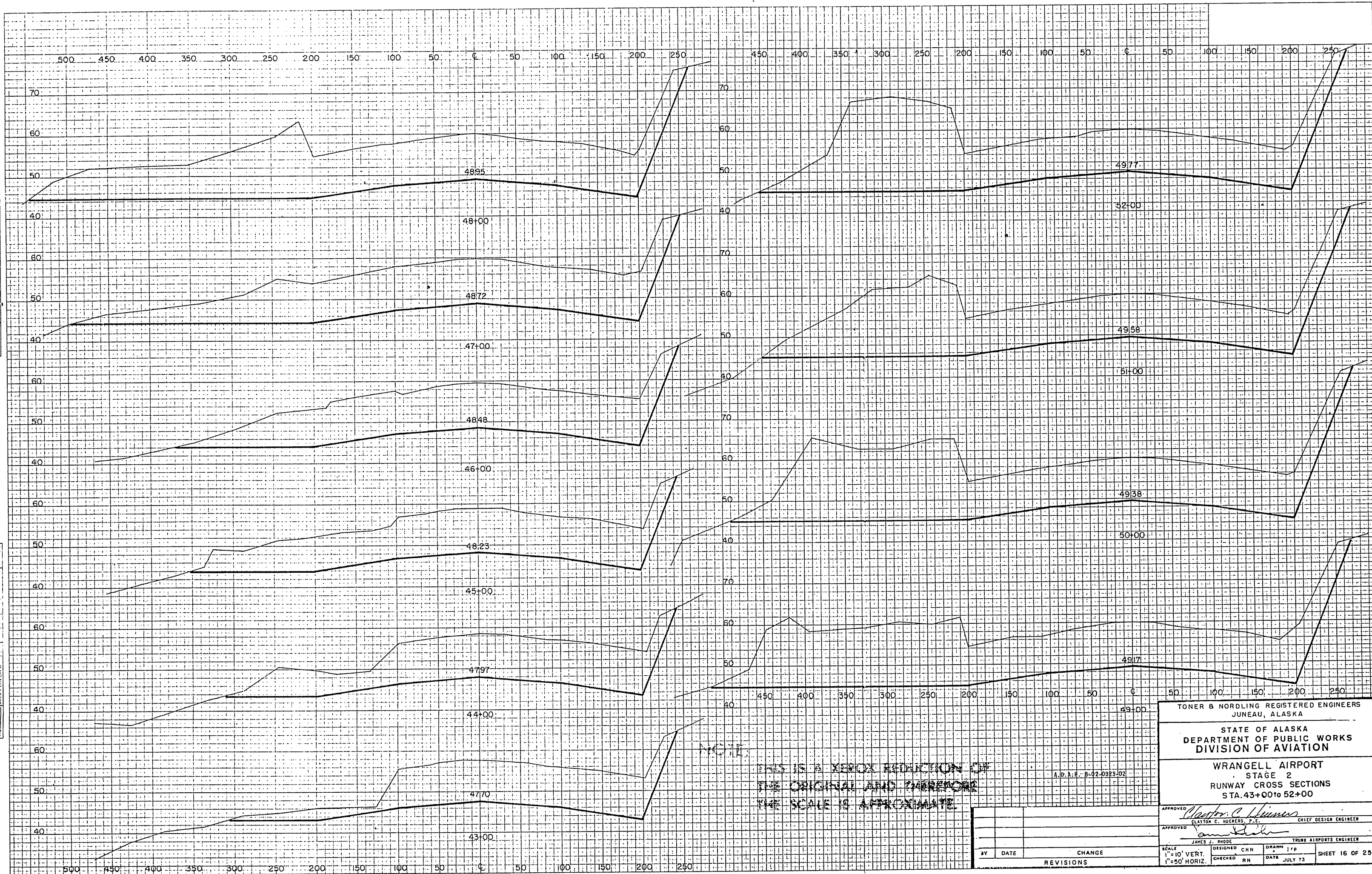
DESIGNED: CRN
 CHECKED: RN

DRAWN: JPP
 DATE: JULY 73

SHEET 15 OF 25

DATE
BY
FINAL SURVEY
COPYIED
PLOTED
NOTE BOOK
NO.

DATE
BY
ORIGINAL SURVEY
PLOTED
NOTE BOOK
NO.



NOTE:
THIS IS A XEROX REPRODUCTION OF
THE ORIGINAL AND THEREFORE
THE SCALE IS APPROXIMATE

A.D.A.F. - B-02-0923-02

BY	DATE	CHANGE

TONER & NORDLING REGISTERED ENGINEERS
JUNEAU, ALASKA

STATE OF ALASKA
DEPARTMENT OF PUBLIC WORKS
DIVISION OF AVIATION

WRANGELL AIRPORT
STAGE 2
RUNWAY CROSS SECTIONS
STA. 43+00 TO 52+00

APPROVED *Clayton C. Hueters*
CLAYTON C. HUETERS, P.E. CHIEF DESIGN ENGINEER

APPROVED *James J. Rhoad*
JAMES J. RHOAD TRUNK AIRPORTS ENGINEER

SCALE
1" = 10' VERT.
1" = 50' HORIZ.

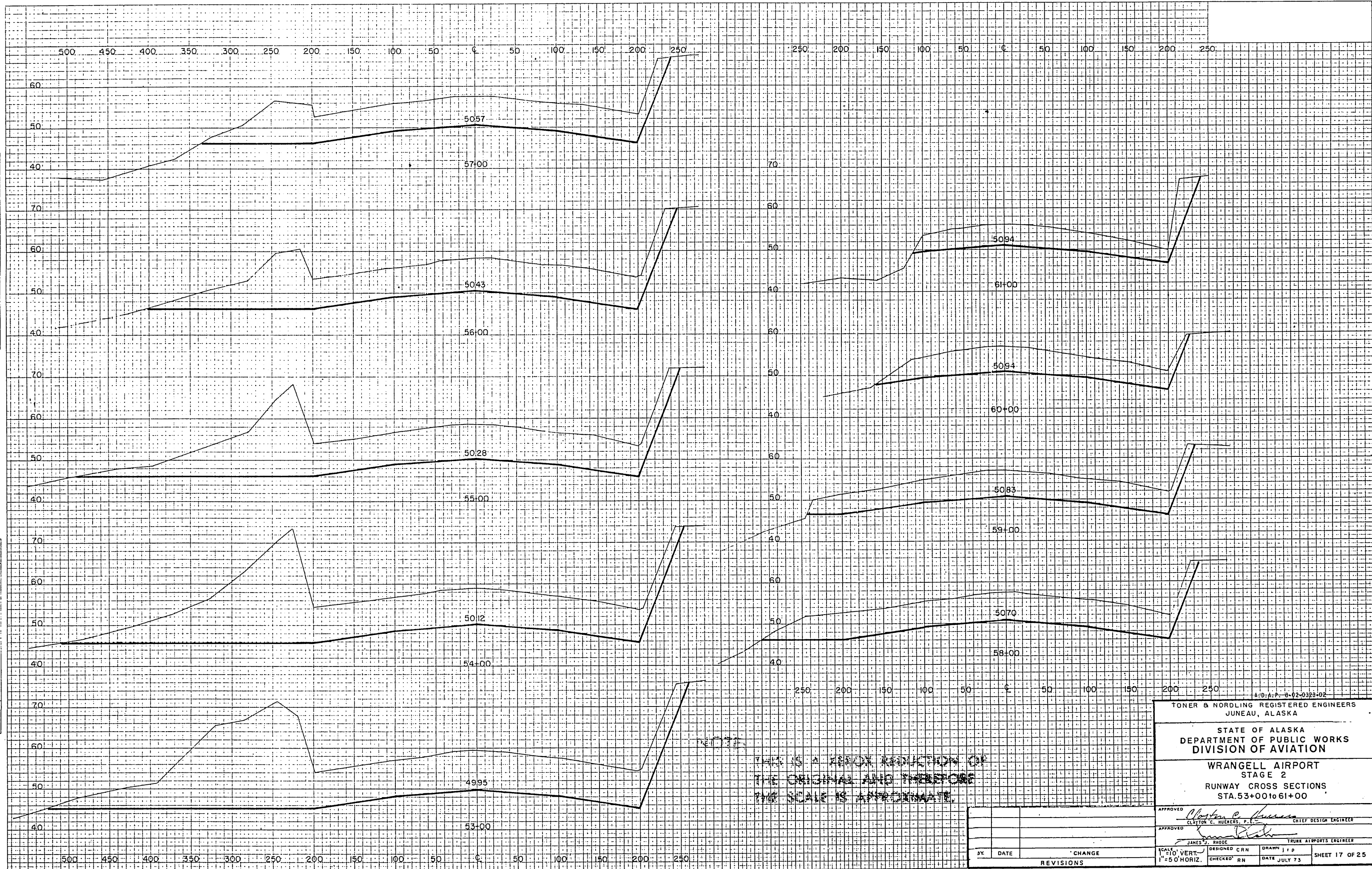
DESIGNED CRN
CHECKED RN

DRAWN JFP
DATE JULY 73

SHEET 16 OF 25

FINAL SURVEY
 SURVEY NO. 11
 DATE 11/11/47
 BY J. H. WATSON
 NOTE BOOK NO. 1111
 AREAS CHANGED

ORIGINAL SURVEY
 SURVEY NO. 11
 DATE 11/11/47
 BY J. H. WATSON
 NOTE BOOK NO. 1111
 AREAS CHANGED



A-D-A-P-8-02-0323-02

TONER & NORDLING REGISTERED ENGINEERS
 JUNEAU, ALASKA

STATE OF ALASKA
 DEPARTMENT OF PUBLIC WORKS
 DIVISION OF AVIATION

WRANGELL AIRPORT
 STAGE 2
 RUNWAY CROSS SECTIONS
 STA. 53+00 TO 61+00

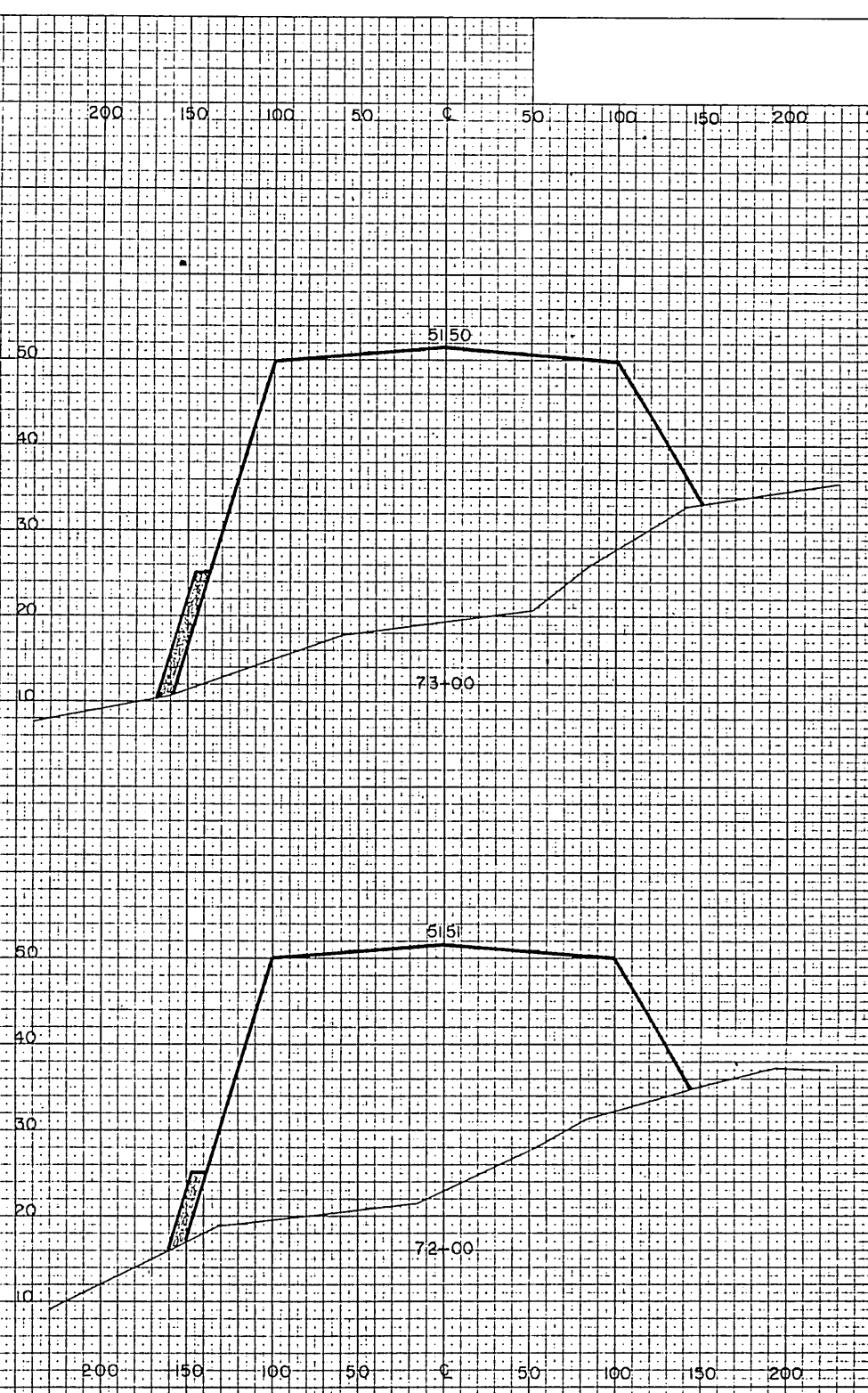
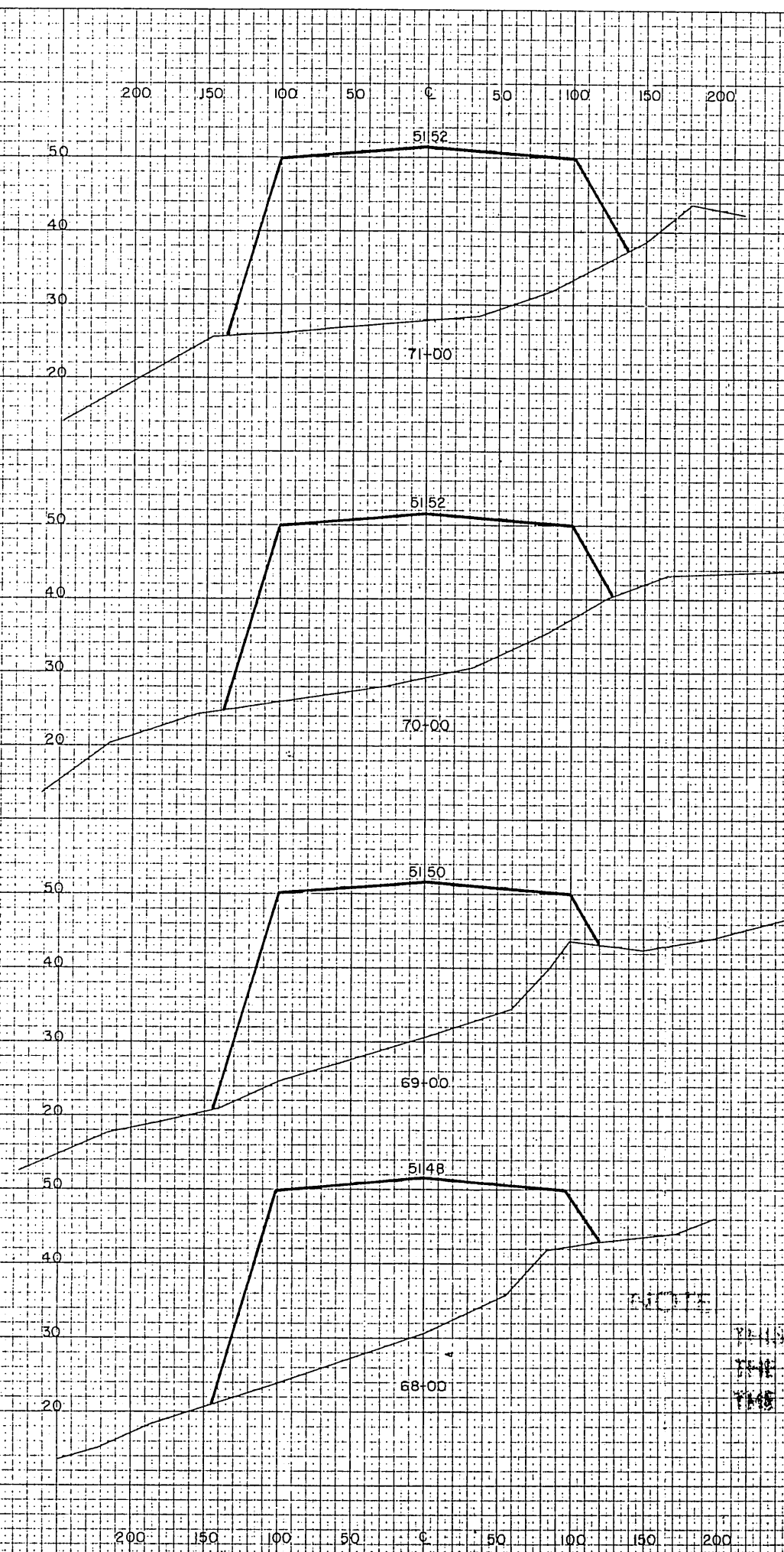
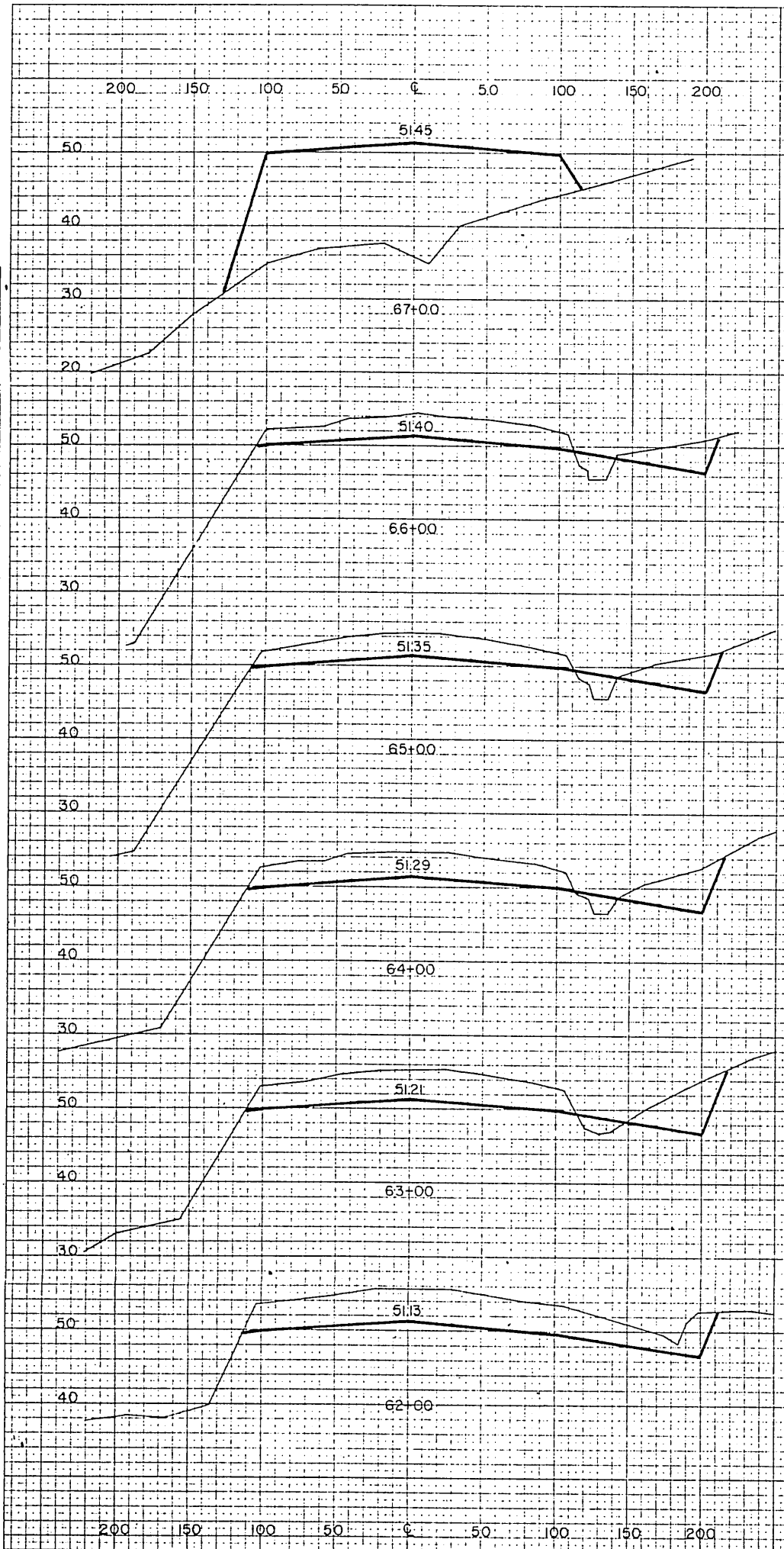
APPROVED *Clayton C. Huemers* CHIEF DESIGN ENGINEER
 CLAYTON C. HUEMERS, P. E.
 APPROVED *James S. Rhode* TRUNK AIRPORTS ENGINEER
 JAMES S. RHODE

BY	DATE	CHANGE

SCALE: 1" = 10' VERT. / 1" = 50' HORIZ.
 DESIGNED CRN / CHECKED RN
 DRAWN J.F.D. / DATE JULY 73
 SHEET 17 OF 25

DATE
BY
ORIGINAL SURVEY
NO. 1000
AREA CHECKED

DATE
BY
ORIGINAL SURVEY
NO. 1000
AREA CHECKED



NOTE
THIS IS A WORK PRODUCTION OF
THE ORIGINAL AND THEREFORE
THE SCALE IS APPROPRIATE.

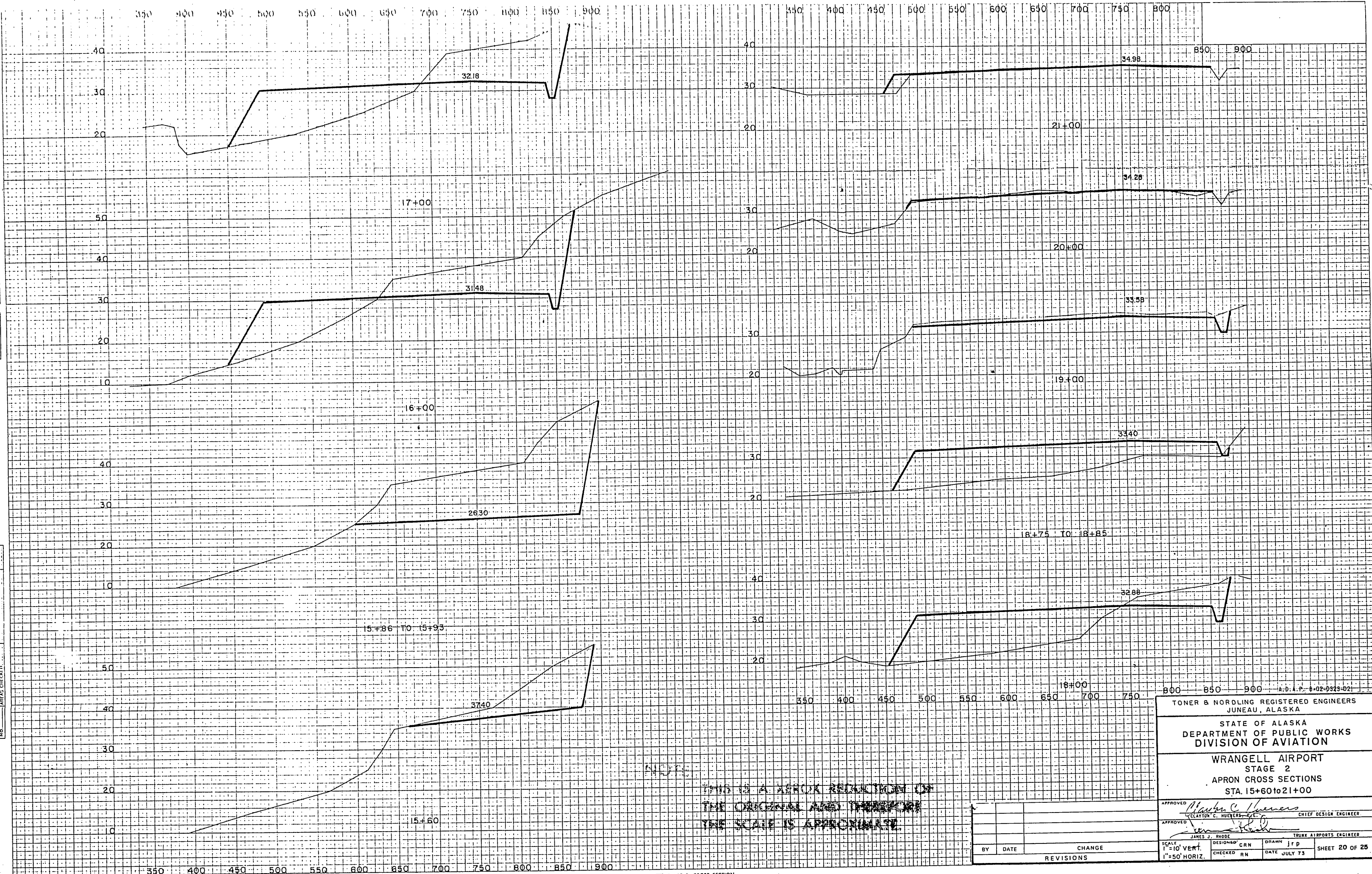
A.D.A.P. - 8-02-0323-02
TONER & NORDLING REGISTERED ENGINEERS
JUNEAU, ALASKA
STATE OF ALASKA
DEPARTMENT OF PUBLIC WORKS
DIVISION OF AVIATION
WRANGELL AIRPORT
STAGE 2
RUNWAY CROSS SECTIONS
STA. 62+00 to 73+00

APPROVED
Clayton C. Hueters
CLAYTON C. HUETERS, P.E. CHIEF DESIGN ENGINEER
APPROVED
James J. Rude
JAMES J. RUDE TRUNK AIRPORTS ENGINEER
SCALE
1" = 10' VERT.
1" = 50' HORIZ.
DESIGNED CRN
CHECKED RN
DRAWN jrp
DATE JULY 73
SHEET 18 OF 25

BY	DATE	CHANGE

FINAL SURVEY
 SURVEYED BY
 PLOTTED BY
 NOTE BOOK NO.
 AREA
 M.C.F.P.

ORIGINAL SURVEY
 SURVEYED BY
 PLOTTED BY
 NOTE BOOK NO.
 AREA
 M.C.F.P.



TONER & NORDLING REGISTERED ENGINEERS
 JUNEAU, ALASKA

STATE OF ALASKA
 DEPARTMENT OF PUBLIC WORKS
 DIVISION OF AVIATION

WRANGELL AIRPORT
 STAGE 2
 APRON CROSS SECTIONS
 STA. 15+60 TO 21+00

APPROVED *Clayton C. Huey*
 CLAYTON C. HUEY, S.E. CHIEF DESIGN ENGINEER

APPROVED *James J. Rhode*
 JAMES J. RHODE TRUNK AIRPORTS ENGINEER

SCALE
 1" = 10' VERT.
 1" = 50' HORIZ.

DESIGNED CRN
 CHECKED RN

DRAWN JRP
 DATE JULY 73

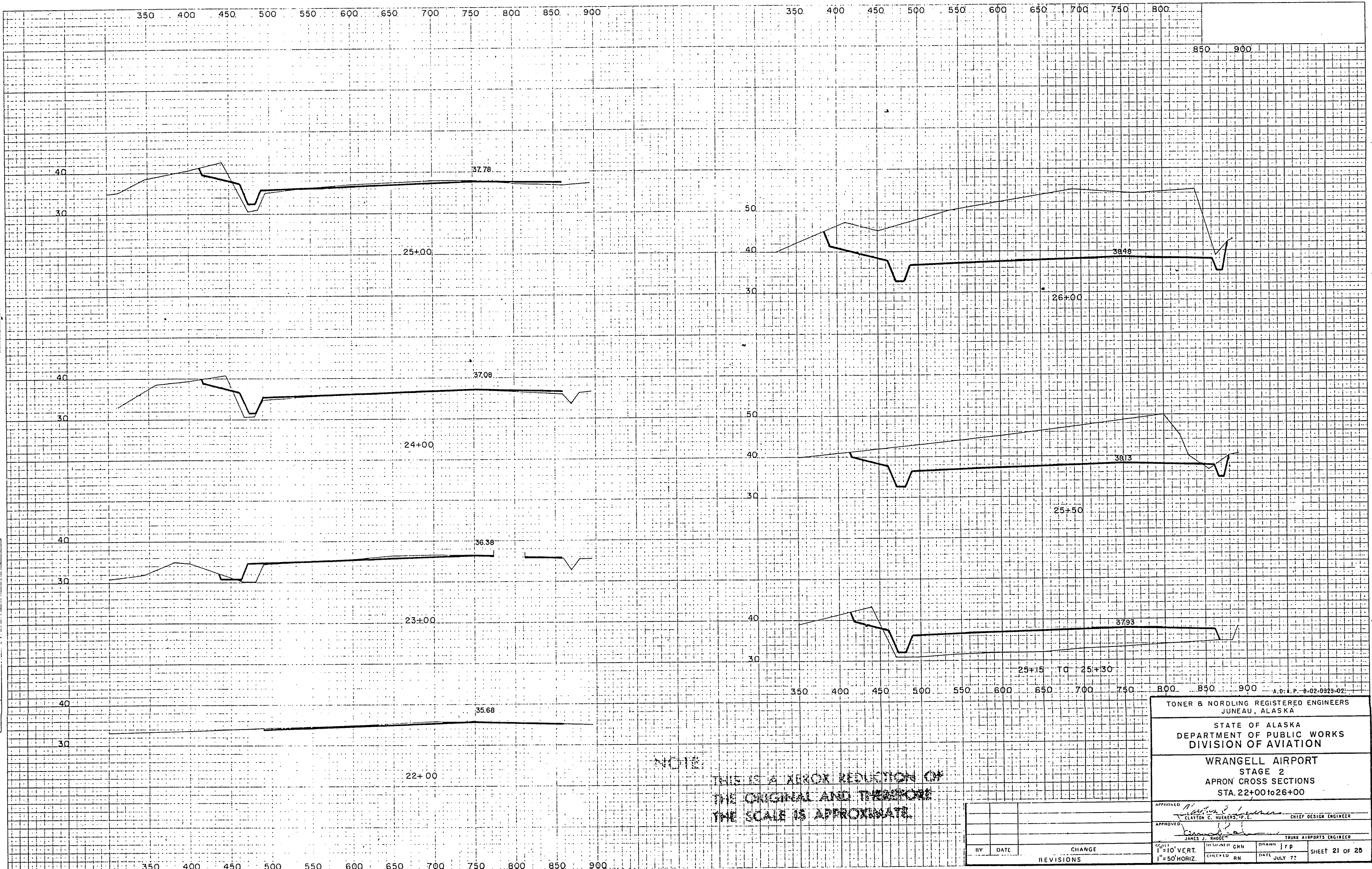
SHEET 20 OF 25

BY	DATE	CHANGE

REVISIONS

DATE
BY
FINAL SURVEY
NOTE BOOK
NO.

DATE
BY
ORIGINAL SURVEY
NOTE BOOK
NO.



NOTE:
THIS IS A XEROX REDUCTION OF
THE ORIGINAL AND THEREFORE
THE SCALE IS APPROXIMATE.

BY	DATE	CHANGE
		REVISIONS

TONER & NORDLING REGISTERED ENGINEERS
JUNEAU, ALASKA

STATE OF ALASKA
DEPARTMENT OF PUBLIC WORKS
DIVISION OF AVIATION

WRANGELL AIRPORT
STAGE 2
APRON CROSS SECTIONS
STA. 22+00 TO 26+00

APPROVED: *Clayton C. Nuckens*
CLAYTON C. NUCKENS, P.E. CHIEF DESIGN ENGINEER

APPROVED: *James J. Bink*
JAMES J. BINK TRUCK AIRPORTS ENGINEER

SCALE: 1"=10' VERT.
1"=50' HORIZ.

DESIGNED: CNM
CHECKED: RN
DRAWN: JFP
DATE: JULY 72

SHEET 21 OF 25

FINAL SURVEY CHECKED BY DATE
 ORIGINAL SURVEY CHECKED BY DATE
 NO. AREA CHECKED

ORIGINAL SURVEY CHECKED BY DATE
 ORIGINAL SURVEY CHECKED BY DATE
 NO. AREA CHECKED



NOTE: THIS IS A REPRODUCTION OF THE ORIGINAL AND THEREFORE THE SCALE IS APPROXIMATE.

BY	DATE	CHANGE

A:0-A-P-8-02-9323-02

TONER & NORDLING REGISTERED ENGINEERS
 JUNEAU, ALASKA

STATE OF ALASKA
 DEPARTMENT OF PUBLIC WORKS
 DIVISION OF AVIATION

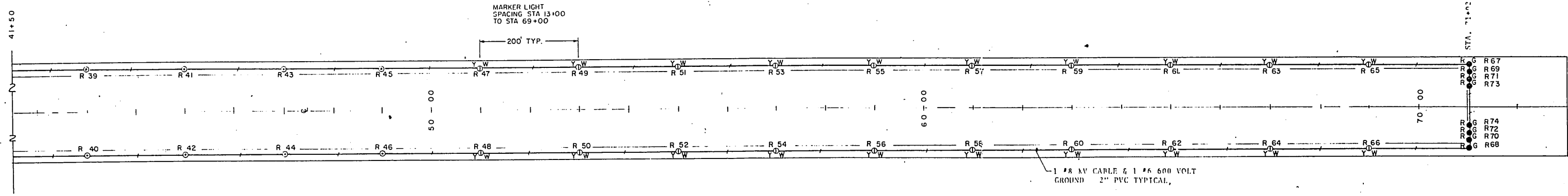
WRANGELL AIRPORT
 STAGE 2
 APRON CROSS SECTIONS
 STA. 27+00 TO 28+80

APPROVED *Clayton C. Hueners, P.E.* CHIEF DESIGN ENGINEER
 APPROVED *James J. Rhode* TRUNK AIRPORTS ENGINEER

SCALE 1" = 10' VERT.
 1" = 50' HORIZ.

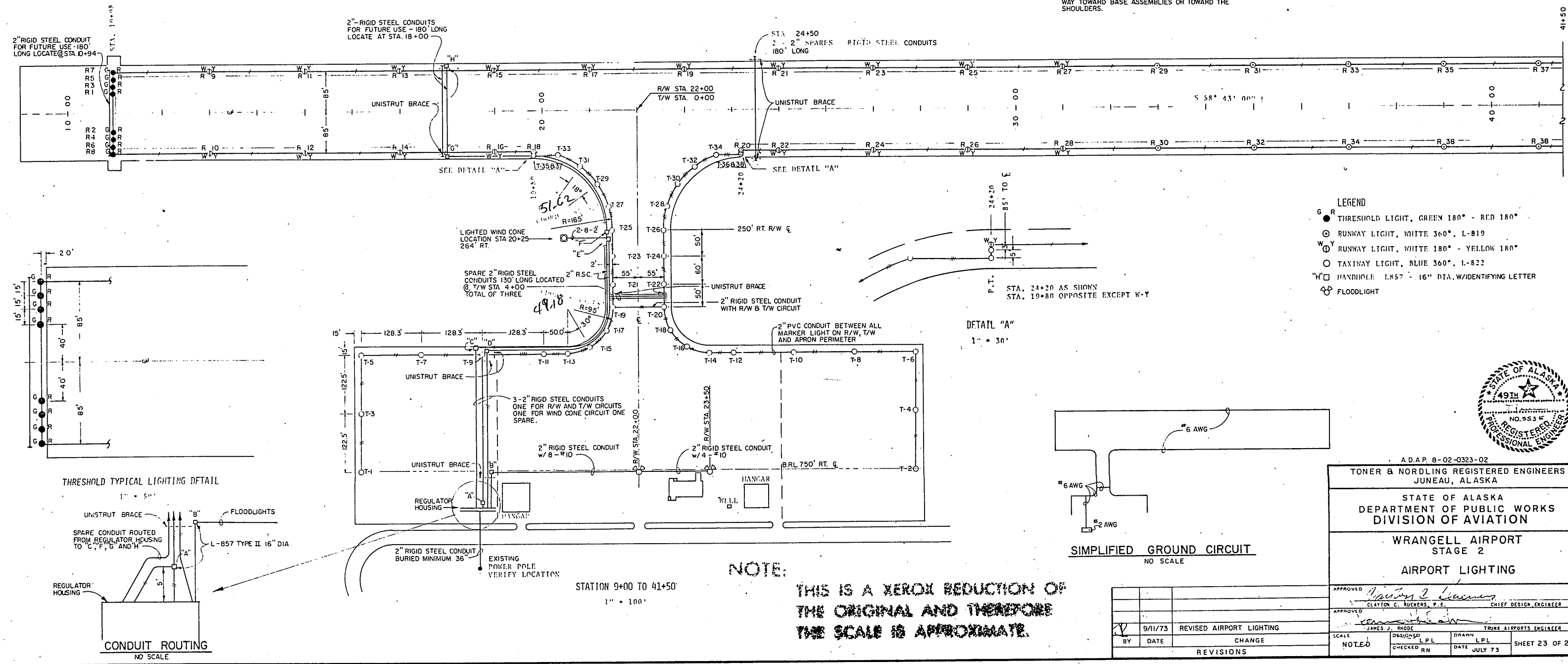
DESIGNED CRN
 CHECKED RN
 DRAWN JFP
 DATE JULY 73

SHEET 22 OF 25



STATION 41 + 50 TO 73 + 00

NOTE: ALL CONDUIT TO BE INSTALLED WITH HIGH POINT AT THE MIDPOINT OF THE RUN AND SLOPED EACH WAY TOWARD BASE ASSEMBLIES OR TOWARD THE SHOULDERS.



- LEGEND**
- G ● THRESHOLD LIGHT, GREEN 180° - RED 180°
 - RUNWAY LIGHT, WHITE 360°, L-819
 - W Y ○ RUNWAY LIGHT, WHITE 180° - YELLOW 180°
 - TAXIWAY LIGHT, BLUE 360°, L-822
 - H □ HANDHOLE L-857 - 16" DIA. W/IDENTIFYING LETTER
 - ☼ FLOODLIGHT



A.D.A.P. 8-02-0323-02
TONER & NORDLING REGISTERED ENGINEERS
 JUNEAU, ALASKA

STATE OF ALASKA
 DEPARTMENT OF PUBLIC WORKS
 DIVISION OF AVIATION

WRANGELL AIRPORT
 STAGE 2
 AIRPORT LIGHTING

APPROVED	<i>Clayton C. Toner</i>	CLAYTON C. TONER, P.E.	CHIEF DESIGN ENGINEER
APPROVED	<i>James J. Rhoads</i>	JAMES J. RHOADS	TRUCK AIRPORTS ENGINEER
BY	DATE	DESIGNED	DRAWN
V	9/11/73	LPL	LPL
REVISIONS		NOTED	CHECKED RN
		DATE	JULY 73
		SHEET 23 OF 25	

