

WRANGELL HIGHWAY (approx.)

PARKING AREA

SH-1 1972
N 1,677,879.11
E 2,951,649.66 } State plane coordinates
Elev. 20.81
+5
SBC set in conc. seaplane ramp, S. edge.

SH-5, 1972
N 1,676,424.34
E 2,953,326.26 } State plane coordinates
Elev. 13.52
SBC set N. side of conc. M.H.
+5

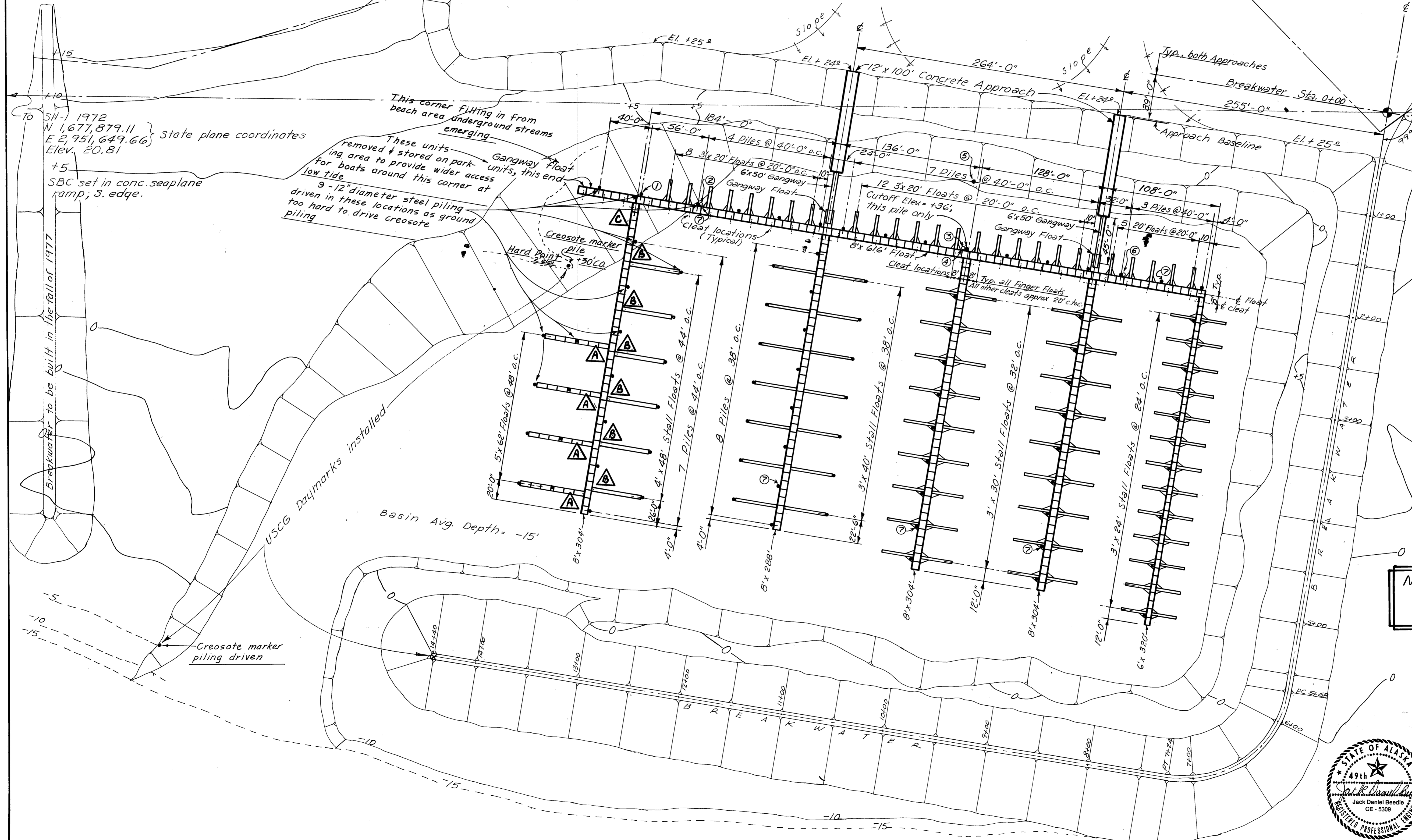
This corner filling in from beach area, underground streams emerging.
These units removed & stored on parking area to provide wider access for boats around this corner at low tide.
9-12" diameter steel piling driven in these locations as ground too hard to drive creosote.

- As Built Notes:** See layout for corresponding circled number
- ① Moved collar 3' SE for clearance - modified collar
 - ② " " 1'-6" " " " - hit rock
 - ③ " " 3' N.W. due to rock - also put 5" spacer between regular float wales & collar to free binding due to power line pull toward shore.
 - ④ Batter brace pile driven & bolted to float pile to help support power line weight.
 - ⑤ Creosote piling driven to help support power lines coming from shore - +36.0' Cutoff
 - ⑥ Moved collar 1' SE. due to rock
 - ⑦ Extra pile extensions put on these piling to take some of the weight & strain of overhead power lines & prevent end piling from binding.

- NOTES:**
- 1. Float pile penetration = 15'. Cutoff Elev. = +30' MLLW, except as noted.
 - 2. Cleats along seaward side of Main Float to be installed at approx. 20' c.t.c. except as noted at head of Finger Floats.

NOTES FOR STALL FLOAT CONNECTION REPAIRS:

- ▲ Location of reqd. 5' stall float connection replacement.
- ▲ Location of reqd. 4' stall float connection replacement.
- ▲ Location of Finger Float Hinge Connection Replacement.



DO NOT SCALE THIS DRAWING - USE DIMENSIONS

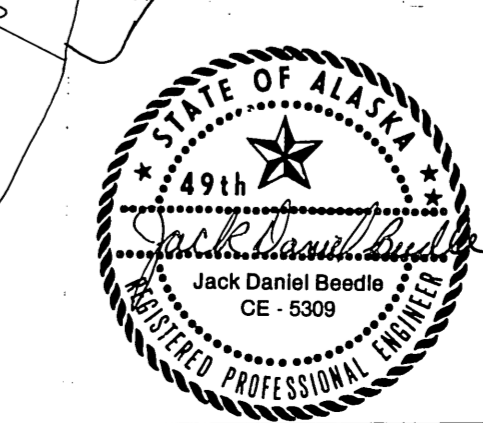
STATE OF ALASKA
DEPARTMENT OF PUBLIC WORKS
DIVISION OF WATER AND HARBORS

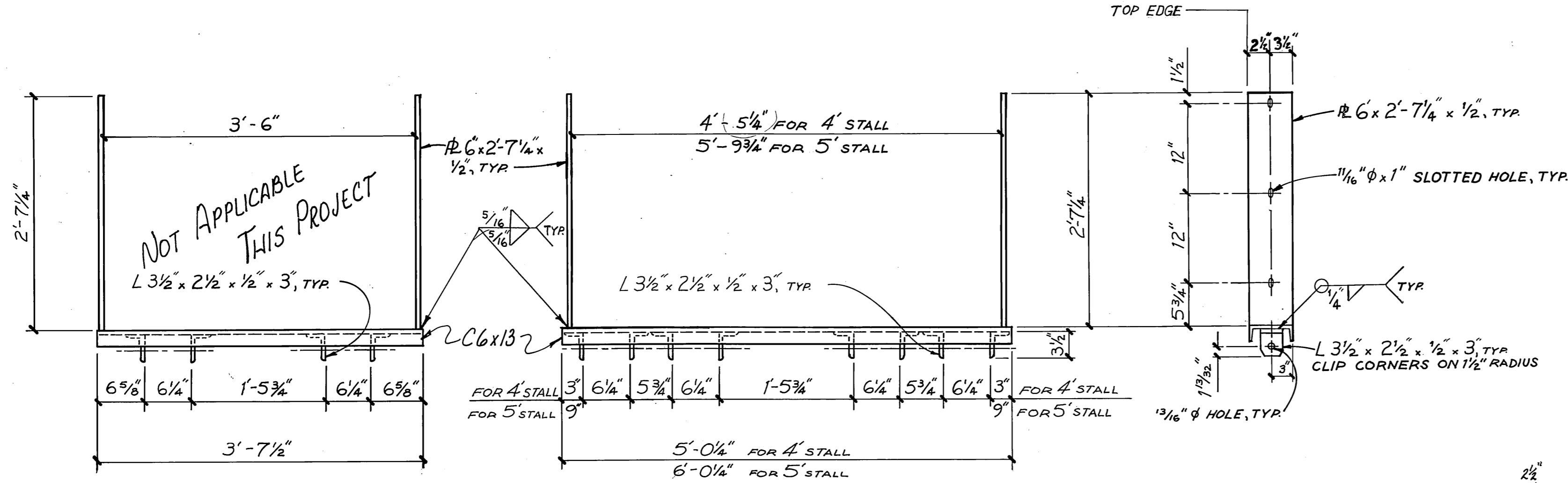
Wrangell, Shoemaker Bay Alaska

PROJECT LAYOUT
STALL FLOAT CONNECTION REPLACEMENT

SCALE 1" = 50'	SURVEYED JT	APPROVED
DESIGNED JT	DRAWN JT	DIRECTOR
CHECKED	DATE	
PROJECT NUMBER 830998		SHEET 1 OF 2

7/2/84

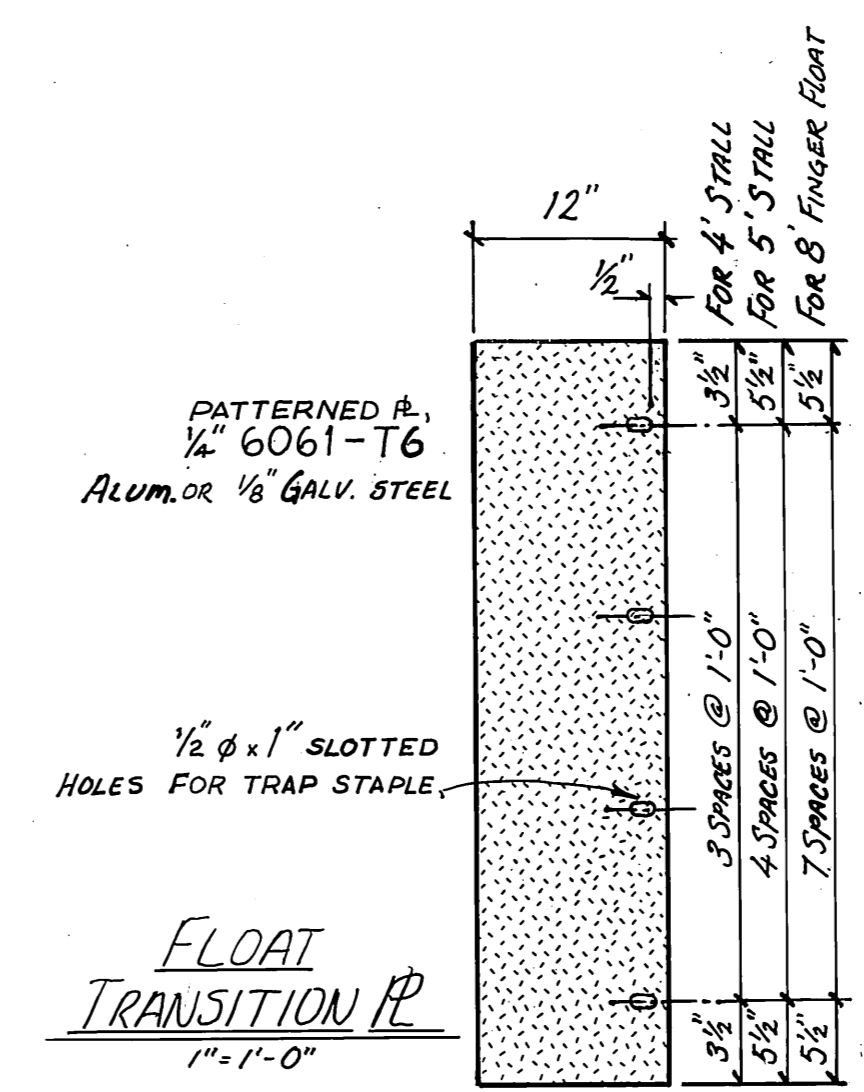




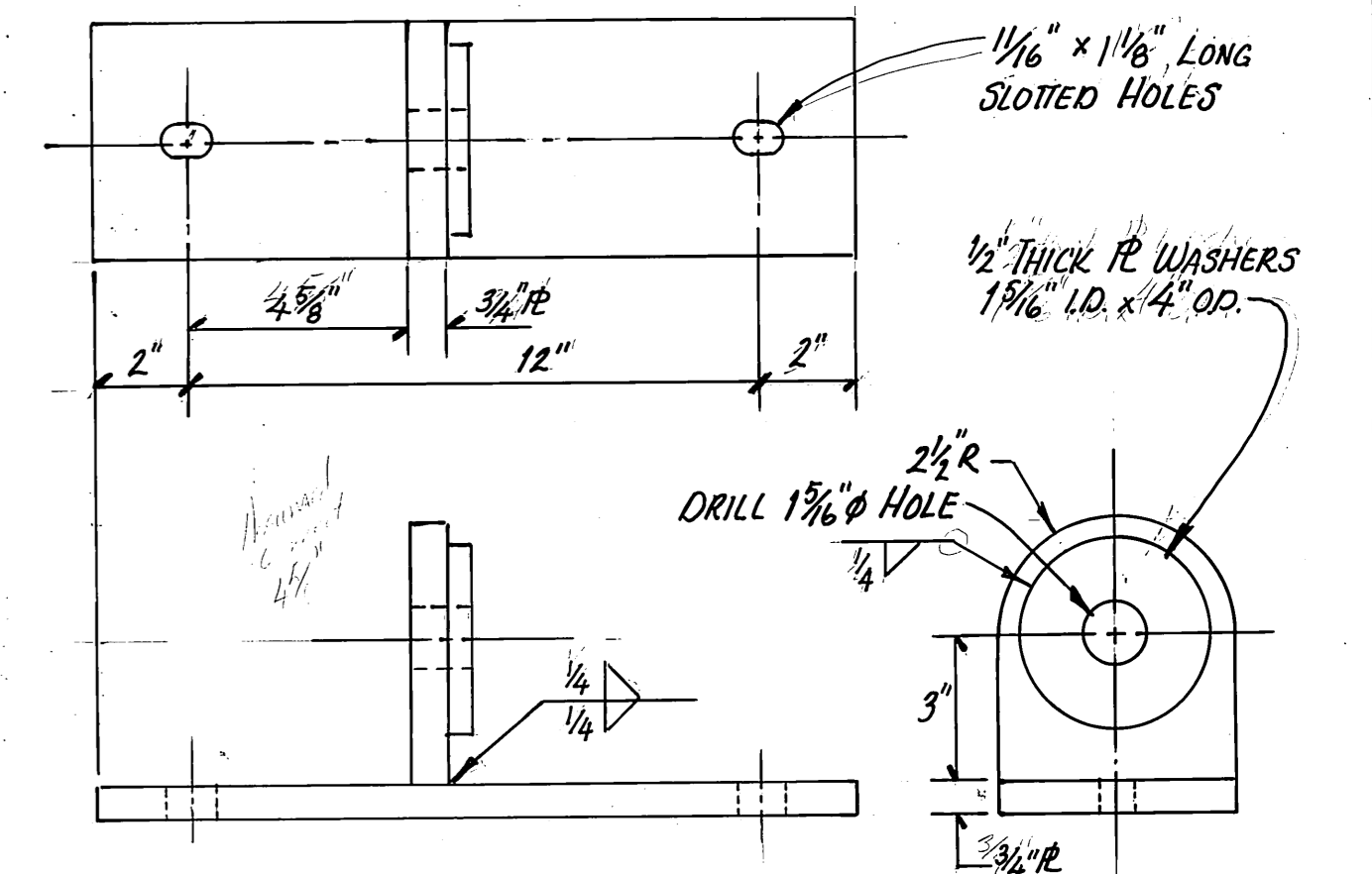
STALL FLOAT ATTACHMENT (GALV.)
FOR 3' x 4' STALLS
1" = 1'-0"

STALL FLOAT ATTACHMENT (GALV.)
FOR 4' x 5' STALLS
1" = 1'-0"

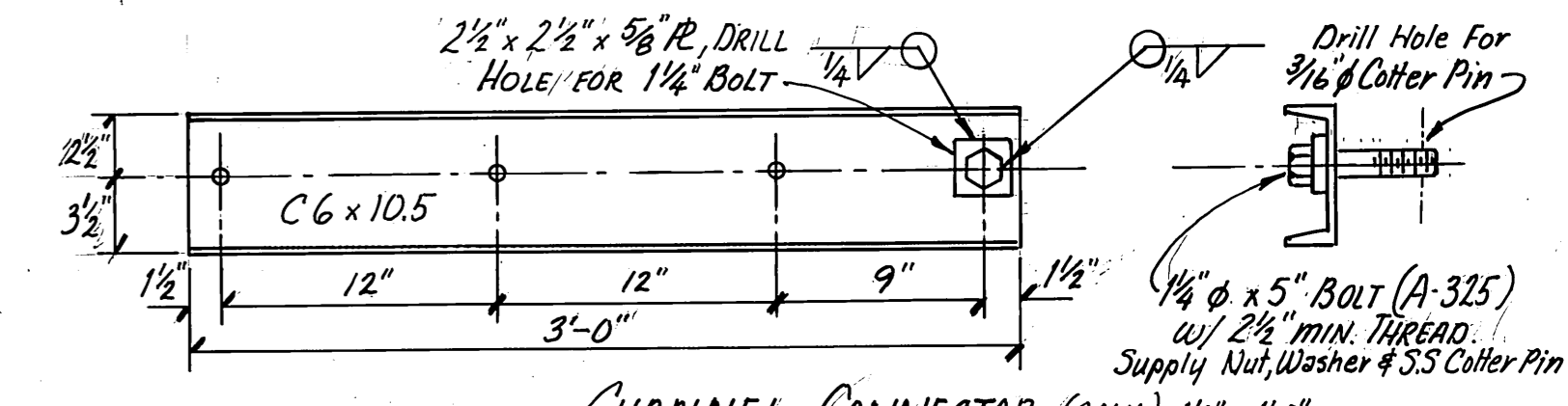
END VIEW
1" = 1'-0"



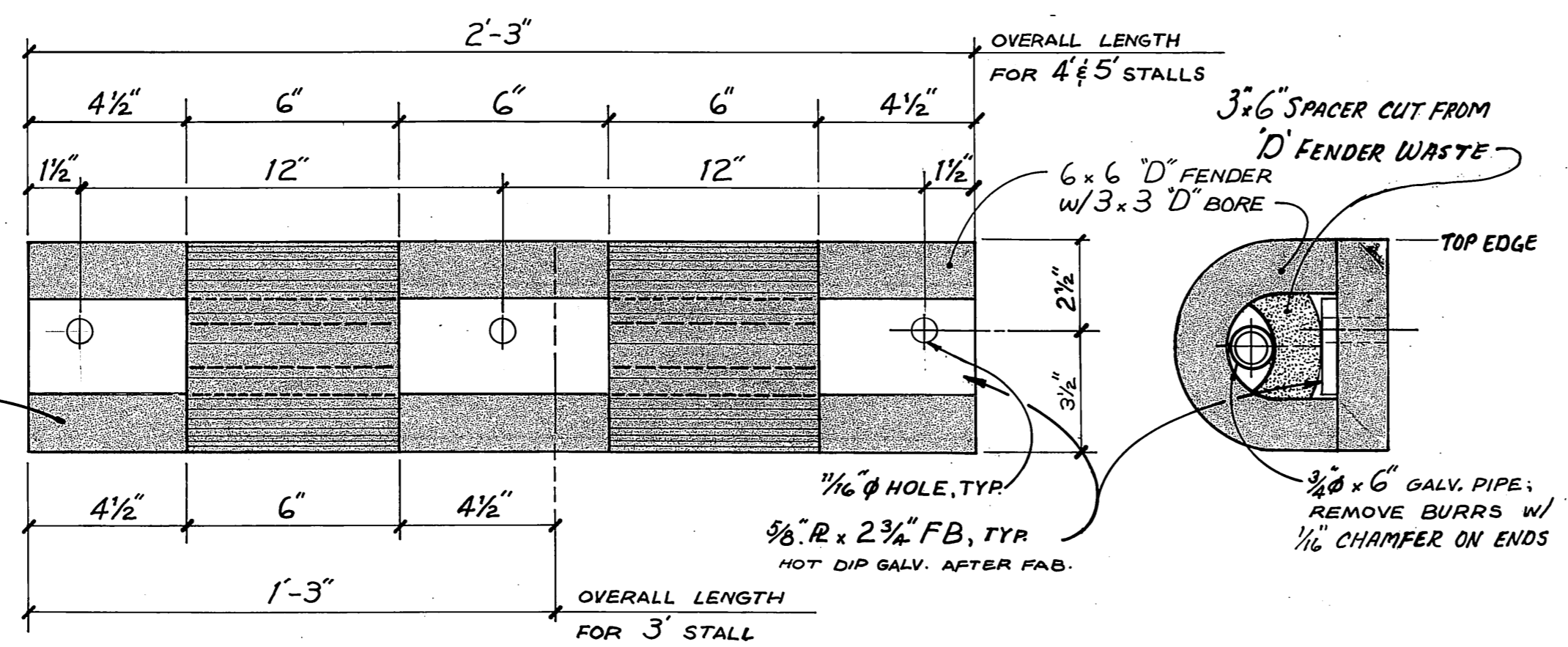
FLOAT TRANSITION PLATE
1" = 1'-0"



TEE HINGE PLATE (GALV.)
3" x 1'-0"

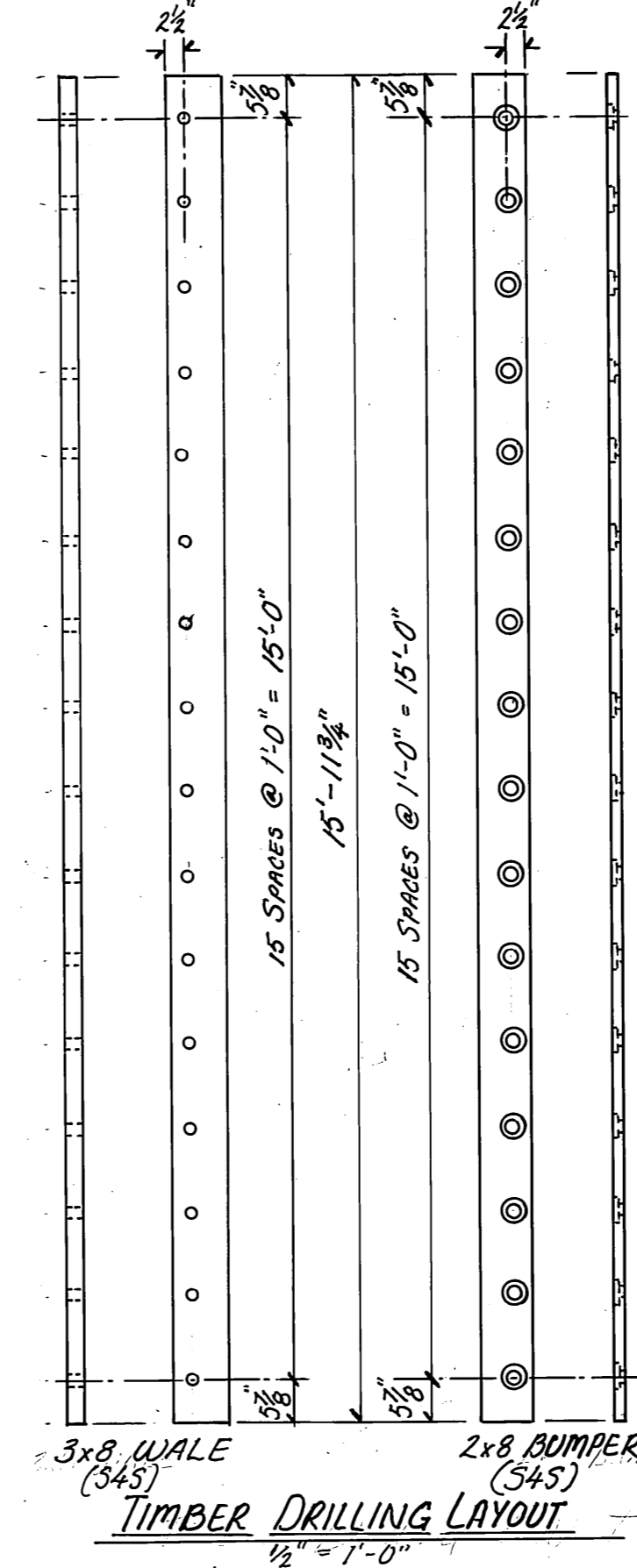


CHANNEL CONNECTOR (GALV.) 1 1/2" = 1'-0"
2 Req'd. = One As Shown & One Opposite Hand

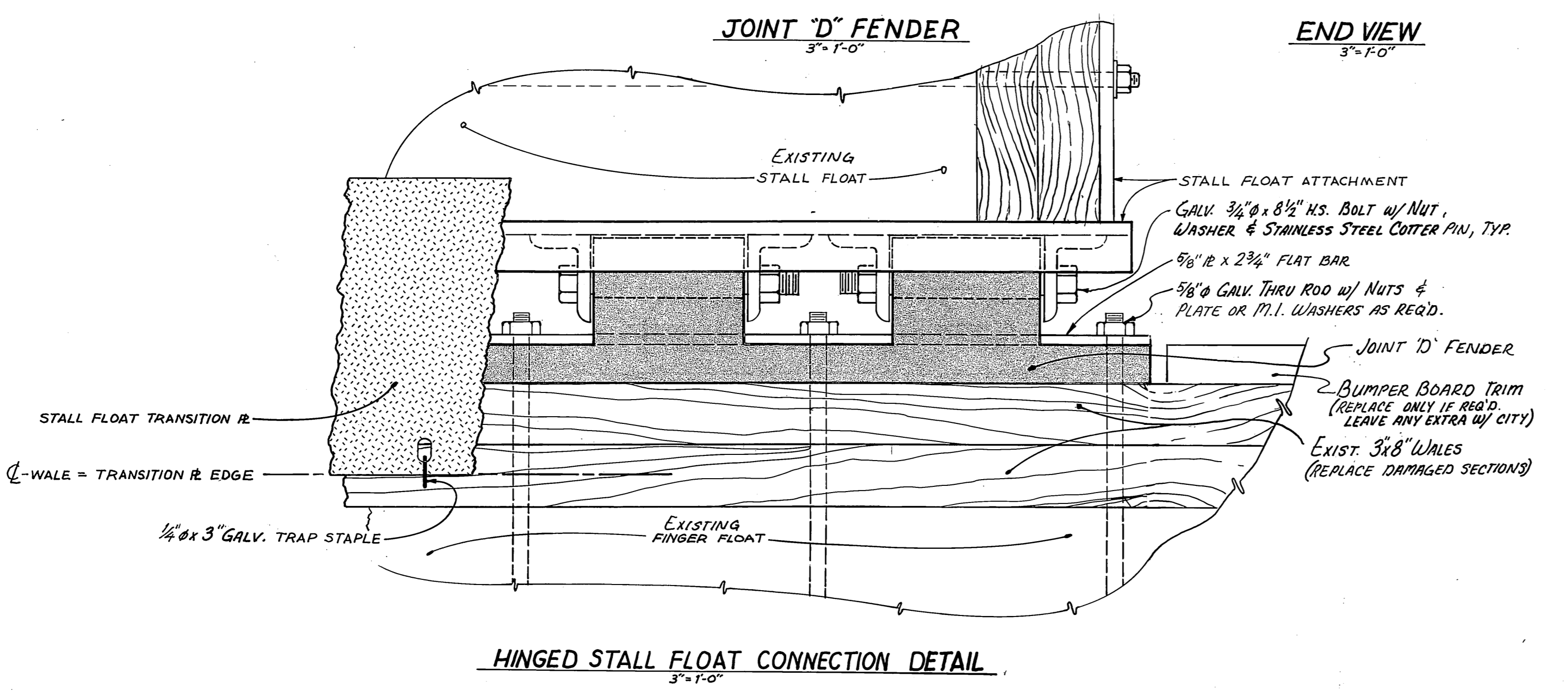


NOTE: FABRICATE FROM SINGLE PIECE OF "D" FENDER

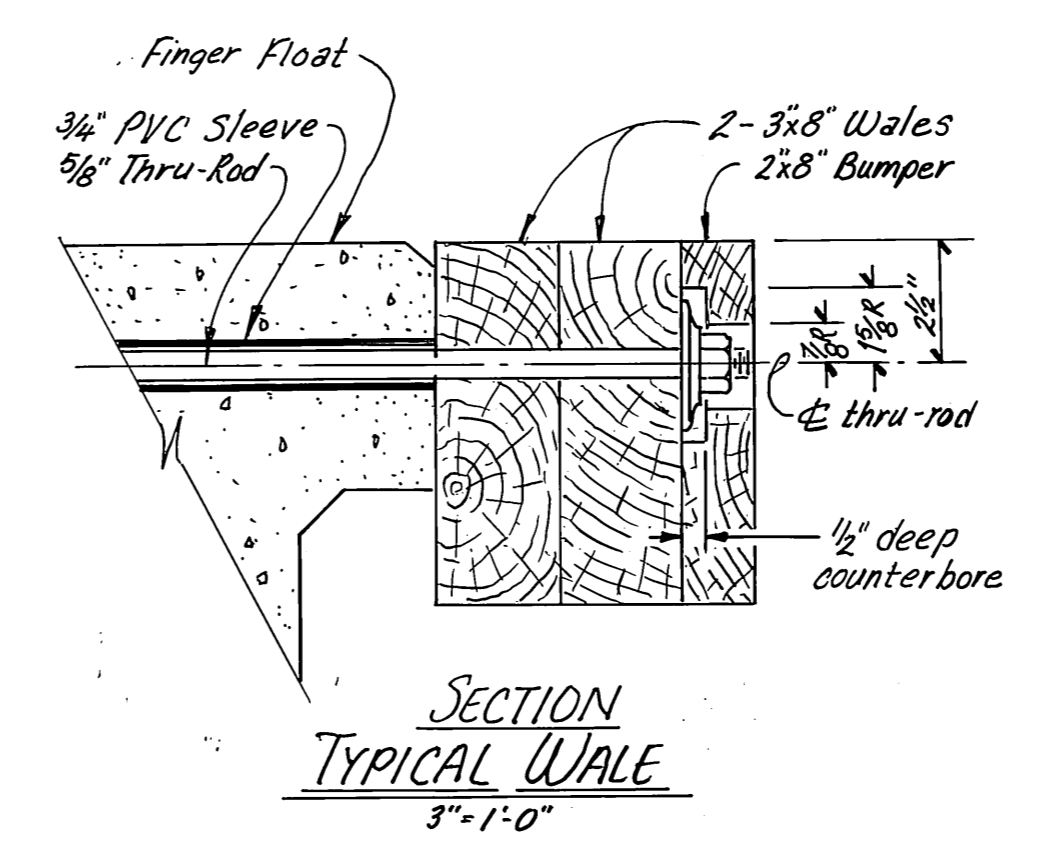
END VIEW
3" = 1'-0"



TIMBER DRILLING LAYOUT
1/2" = 1'-0"



HINGED STALL FLOAT CONNECTION DETAIL
3" = 1'-0"



SECTION TYPICAL WALE
3" = 1'-0"

MATERIALS

4' Stall Float Attachments	6	Req'd.
5' Stall Float Attachments	4	Req'd.
Joint 'D' Fenders: Complete w/ 3/4" x 6" Pipes,	20	Req'd.
1/2" x 3" x 6" Rubber Spacers & 5/8" R x 2 3/4" x 2'-3" Bar	40	Req'd.
3/4" x 8 1/2" Galv. H.S. Bolt w/ Nut, R washer & S.S. Cotter Pin	42	Req'd.
Thru Rods: 5/8" x 9'-2 1/2" (3" min. thread ea. end) w/ Nuts & Washers	11	Req'd.
5/8" x 9'-4 3/4" (3" min. thread ea. end) w/ Nuts & Washers	6	Req'd.
Stall Transition Plates: (1/4" 6061-T6 Alum. or 1/8" Galv. Steel Pattern Plate)		
3'-7" long for 4' stalls	6	Req'd.
4'-11" long for 5' stalls	4	Req'd.
7'-11" long for Main to Finger Float Connection	1	Req'd.
1/4" x 3" Galv. Trap Staples	56	Req'd.
Finger Float to Main Float Connection:		
Tee Hinge Plates	2	Req'd.
Channel Connectors w/ Nuts, Washers & S.S. Cotter Pins	2	Req'd.
3x8 Wales (Milled and Drilled prior to Penta Pressure Treatment)	4	Req'd.
2x8 Bumper Boards (Milled & Drilled prior to Penta Treatment)	6	Req'd.

HOT DIP GALV. ALL STEEL ASSEMBLIES AFTER FABRICATION
ALL FLOAT ATTACHMENTS MUST BE PRE-ASSEMBLED BY FABRICATOR TO ASSURE PROPER FIT.

	DO NOT SCALE THIS DRAWING - USE DIMENSIONS		
	STATE OF ALASKA DEPARTMENT OF TRANSPORTATION AND PUBLIC FACILITIES WRANGELL, SHOEMAKER BAY ALASKA		
FLOAT CONNECTION DETAIL			
DESIGNED <i>Wmn</i>	CHECKED <i>JDB</i>	DRAWN <i>DJM</i>	DATE <i>5-31-84</i>
PROJECT NUMBER <i>830998</i>	SHEET <i>2</i> OF <i>2</i>		