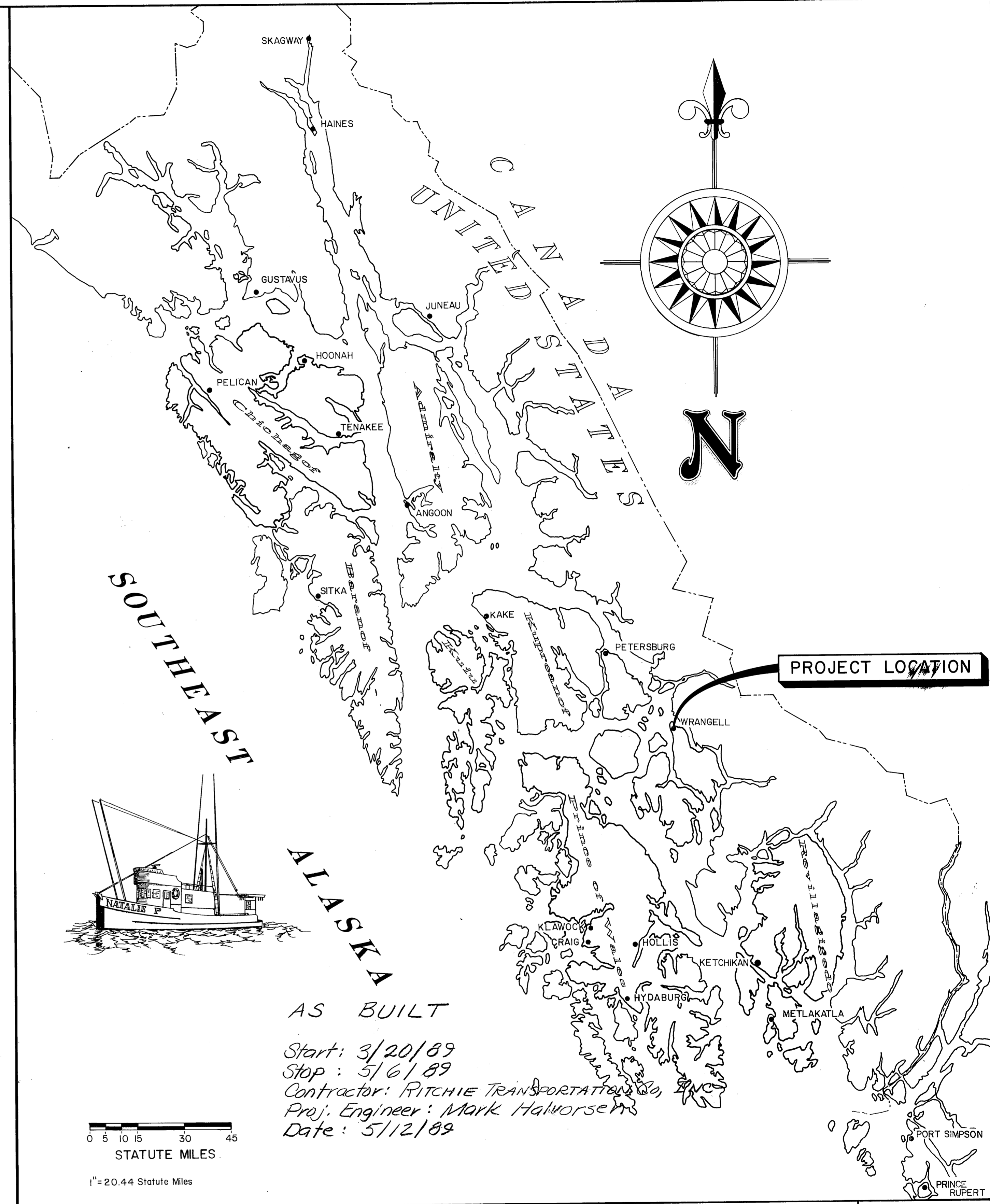
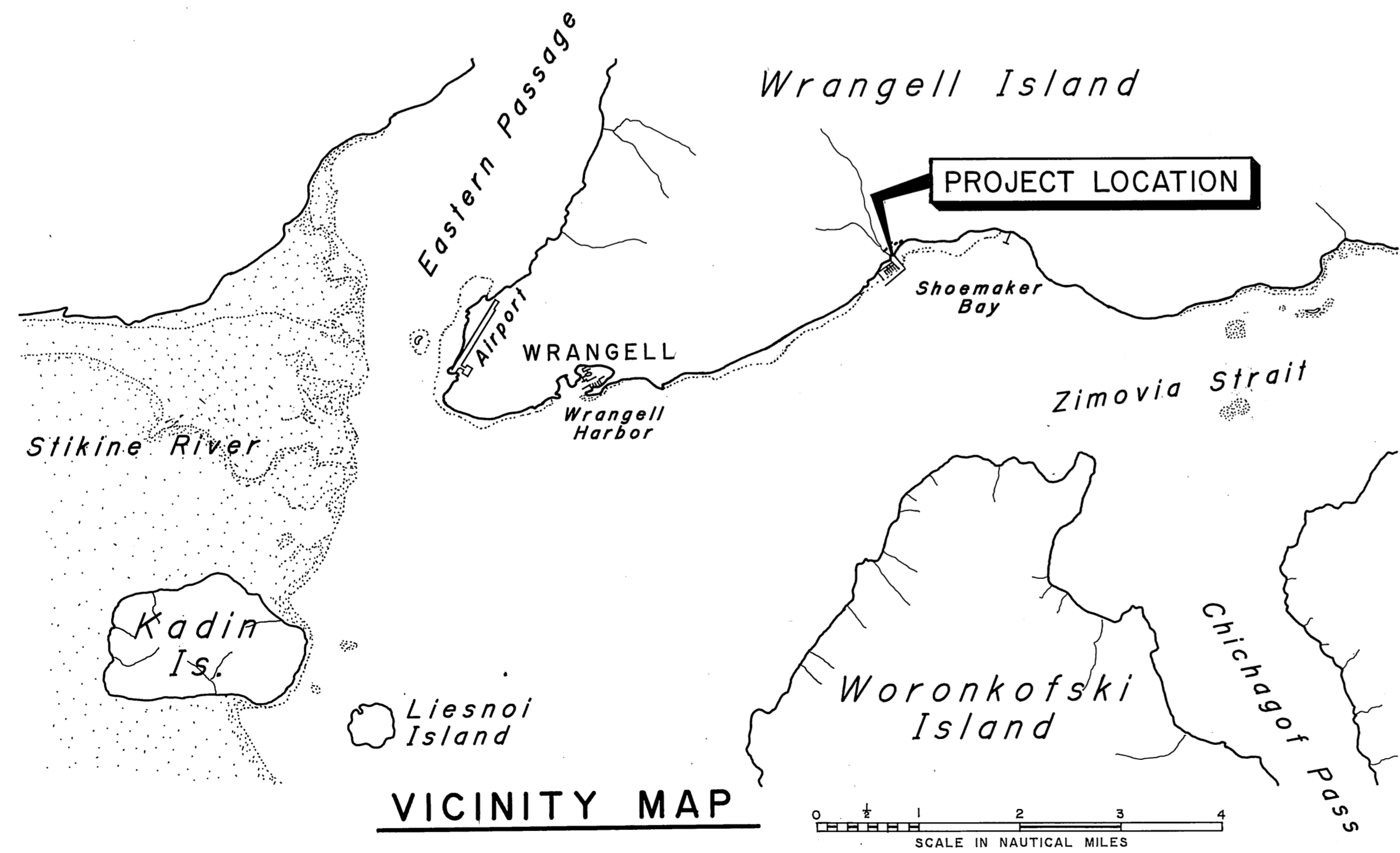


WRANGELL SHOEMAKER BAY LAUNCH RAMP PROJECT NO. 69714



DESIGNED & CONSTRUCTED FOR
DEPARTMENT OF FISH & GAME
DIVISION OF SPORT FISHERIES.
"AN ANGLER FUNDED PROJECT."



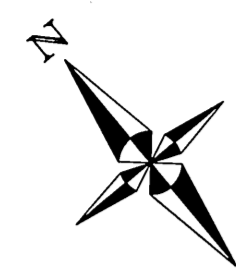
**STATE
OF
ALASKA**

DEPARTMENT OF TRANSPORTATION
& PUBLIC FACILITIES
S.E. REGION DESIGN & CONSTRUCTION

APPROVED
W. Lindemeyer 8/26/88
Director S.E. D.&C. Date
Recommend
for Approval
Memill 8/26/88
Design Chief Date
SHEET 1 of 6

INDEX TO SHEETS	
1	TITLE SHEET
2	PROJECT LAYOUT
3	TYPICAL SECTIONS
4	LAUNCH RAMP PLANK DETAILS
5	6' SECTIONAL FLOAT
6	CONCRETE APRON DETAILS

**PROJECT &
FILE NO.**



NOTE:
Disposal area material shall be for future use by the City of Wrangell.

Disposal Area

P A R K I N G L O T

EL. + 25.0

S.E. edge of approach

Warp slope around light standard to avoid its relocation

208'-0"

43'-9"

V.P.I.

15'

108'-2"

110°

NEW LAUNCHING RAMP

NOTE:
Locate \odot of launch ramp by extending a baseline from the head of both boat harbor approaches S.E. the specified distance. Basis of elevation is the existing approach deck elevations. (+ 24.0)

Breakwater bank is pushed out creating a cut in this side

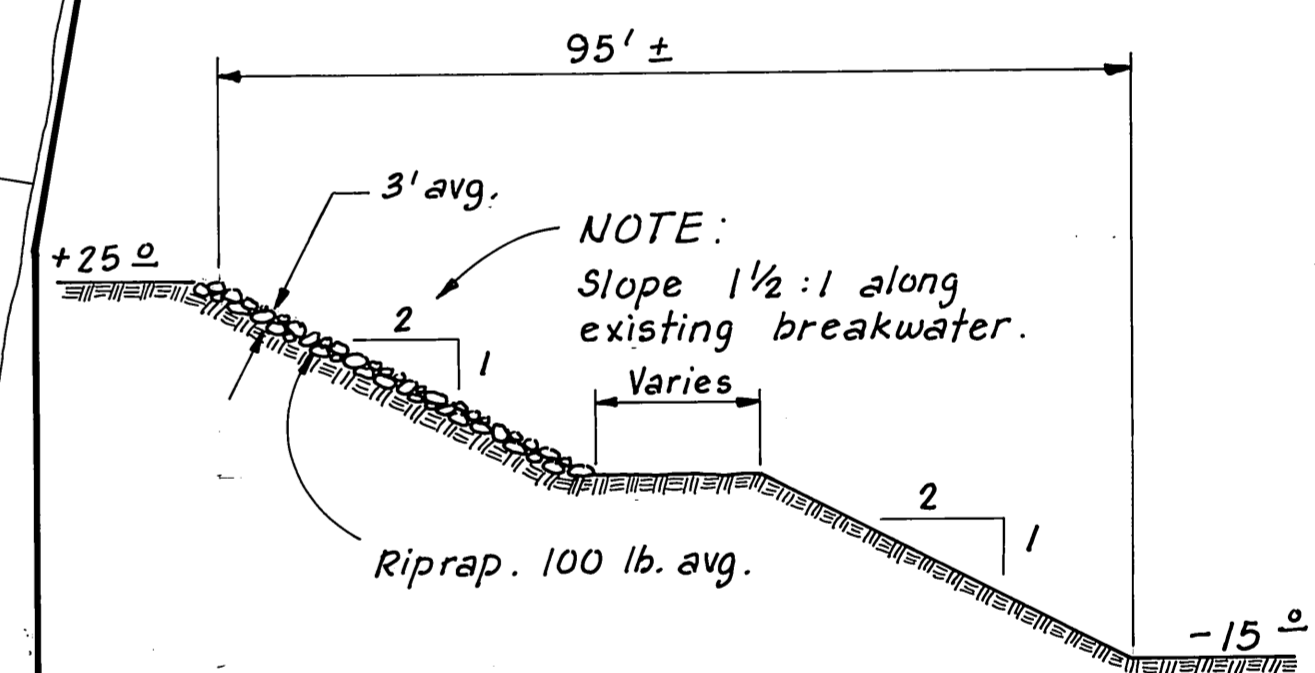
Existing Approaches

E X I S T I N G

B O A T

H A R B O R

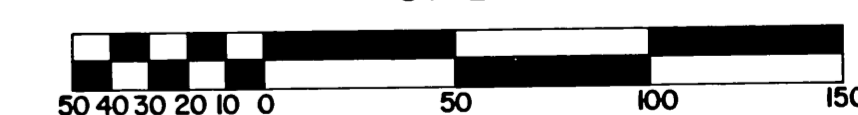
Basin Avg. Depth = -15'



TYPICAL SECTION EXISTING BASIN
N.T.S.

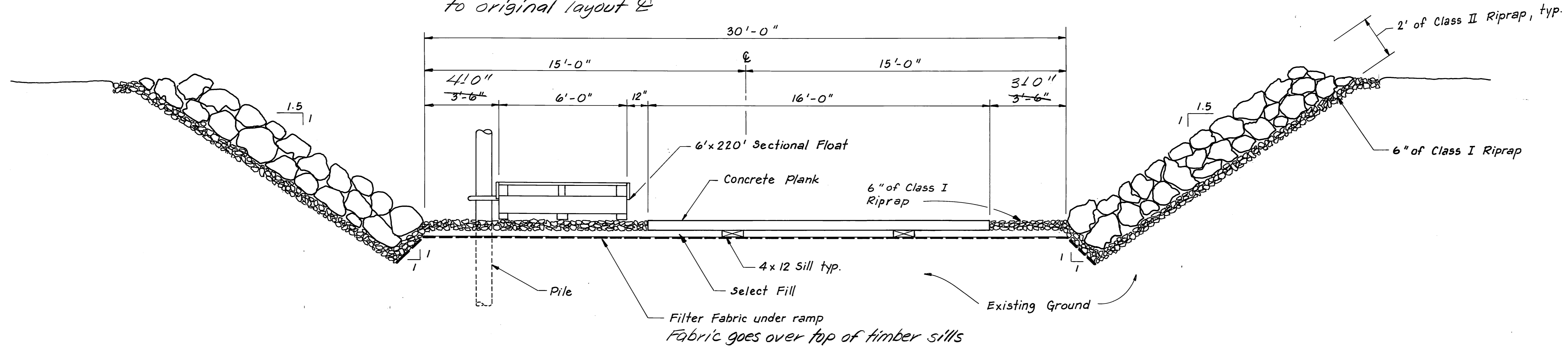
AS BUILT

SCALE

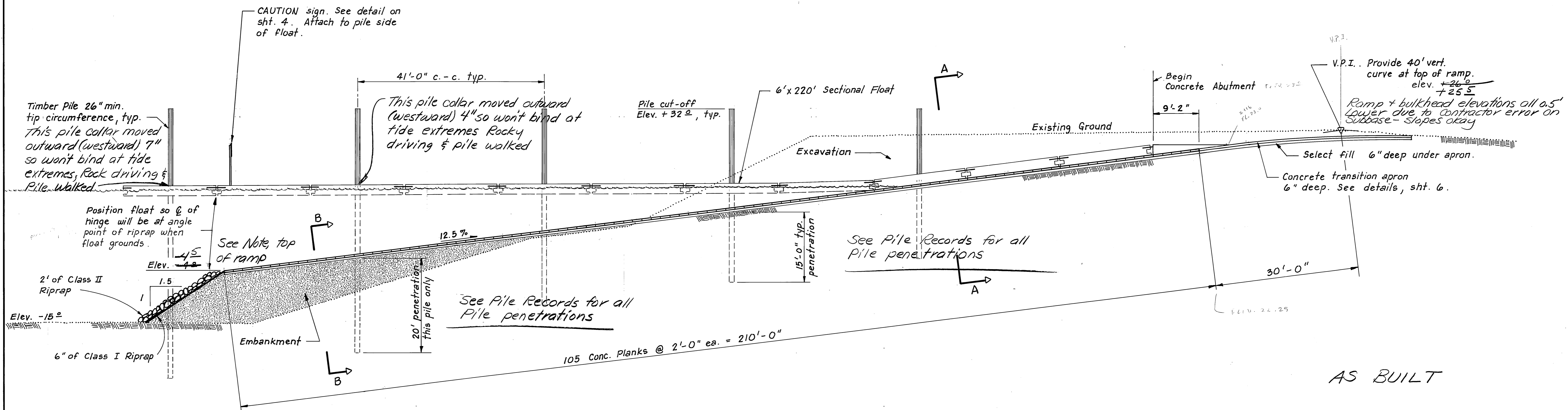
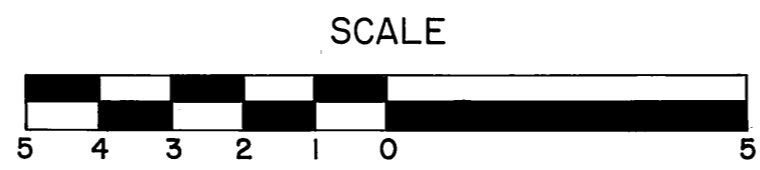


	DO NOT SCALE THIS DRAWING - USE DIMENSIONS			
	STATE OF ALASKA DEPARTMENT OF TRANSPORTATION AND PUBLIC FACILITIES			
Wrangell		Alaska		
PROJECT LAYOUT				
DESIGNED JDB	CHECKED TS	DRAWN TS	DATE April 1988	
PROJECT NUMBER 69714	SHEET 2 OF 6			

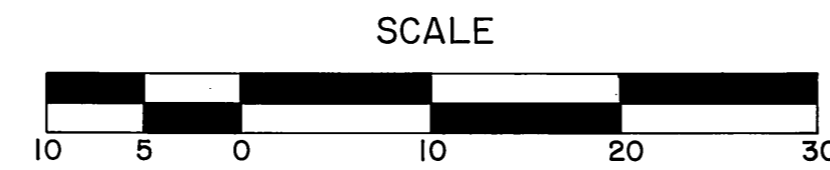
Contractor layout error shifted floats and concrete ramp 0.5' to the South - Sub base & slopes OKAY to original layout



SECTION A-A

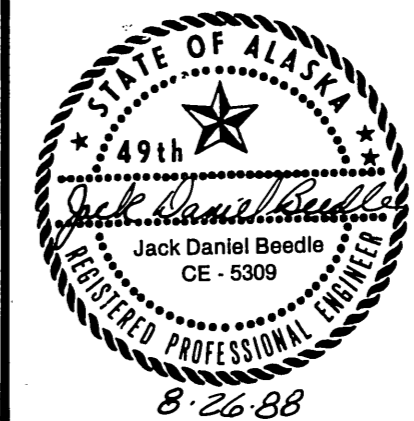


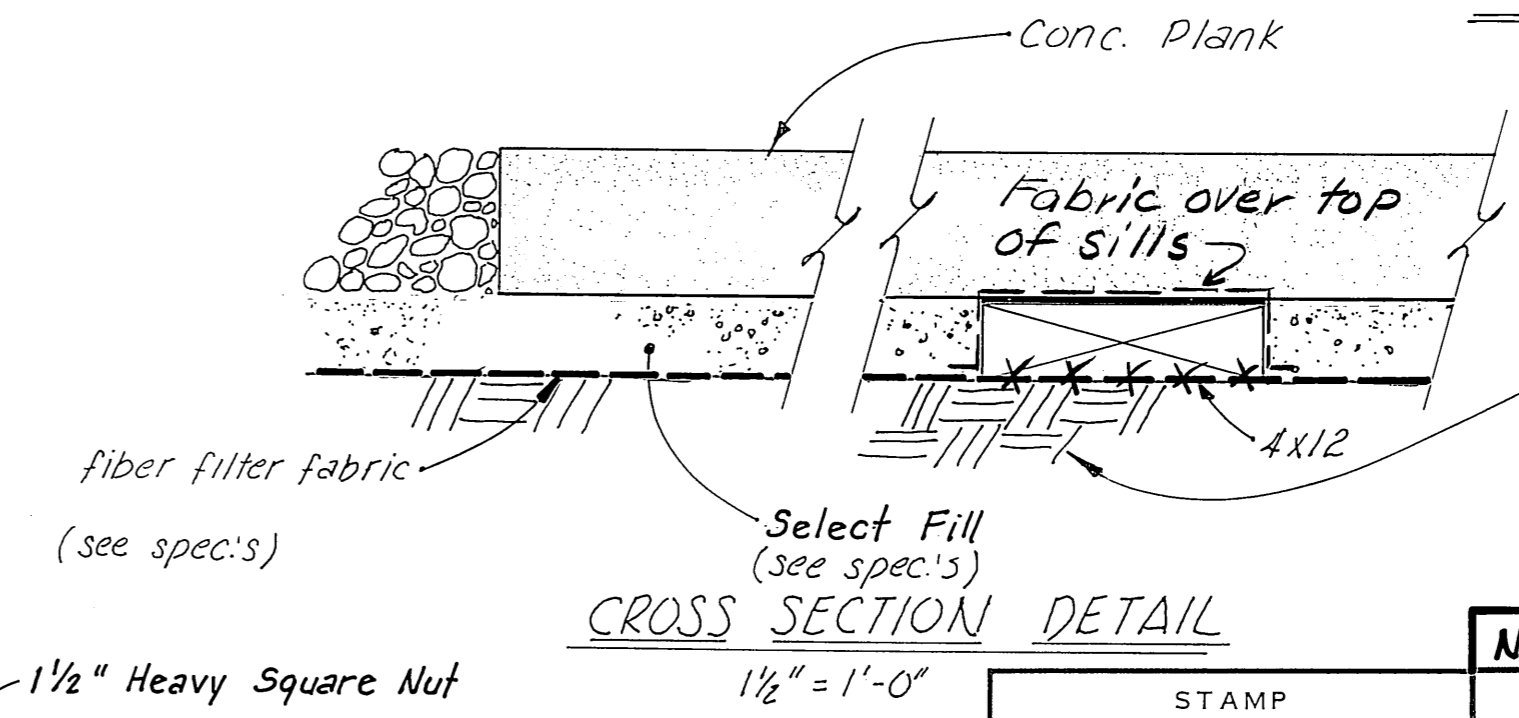
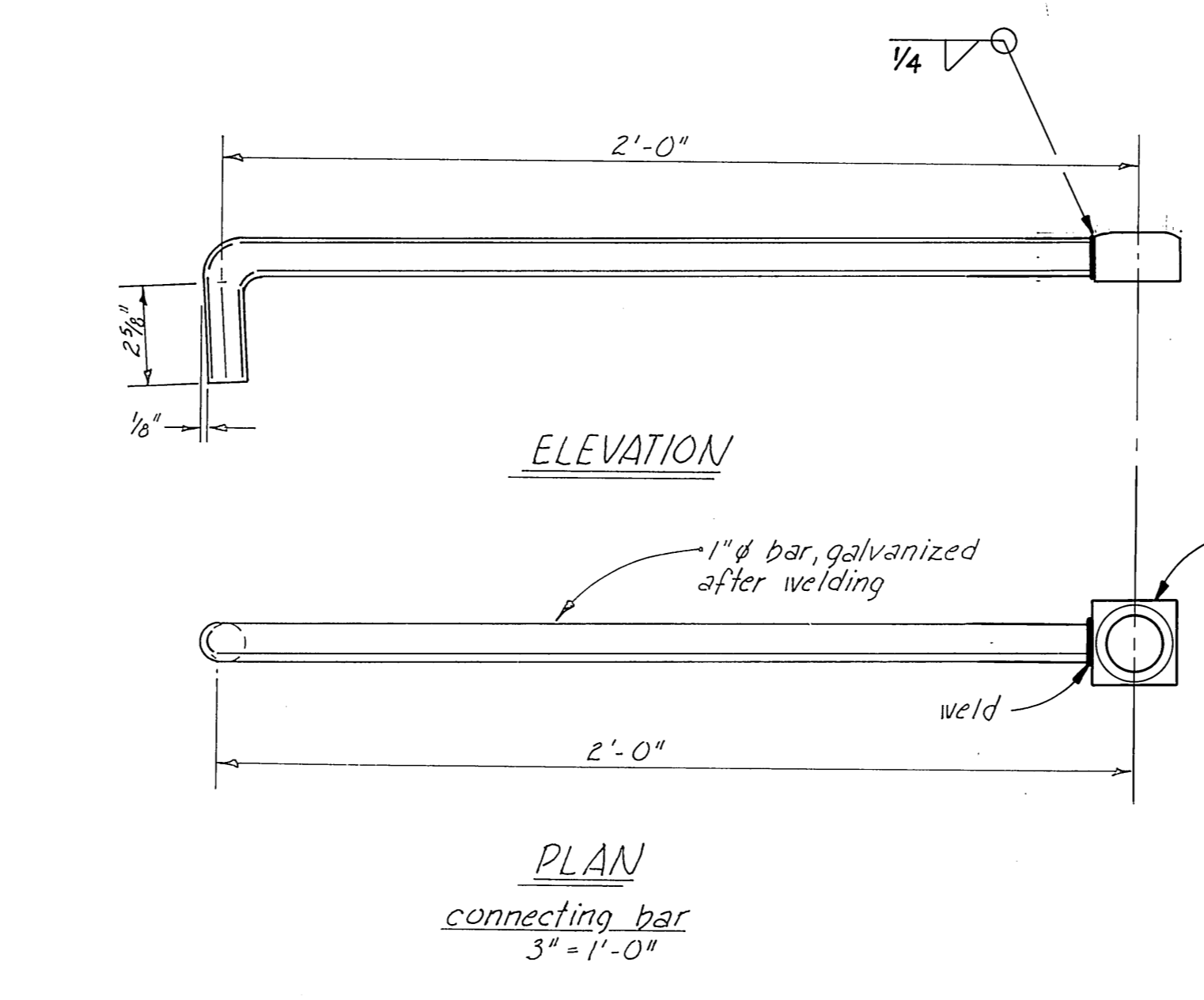
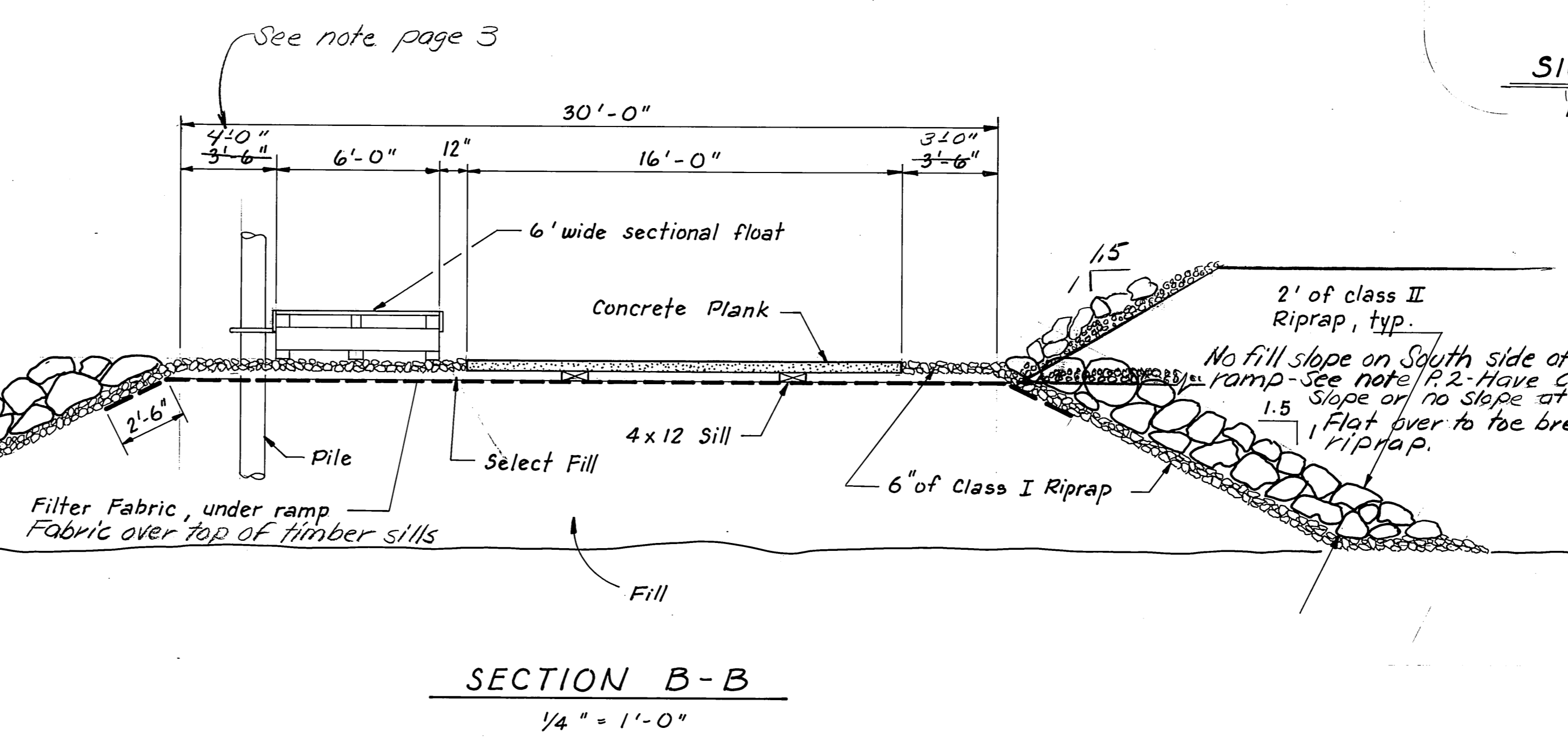
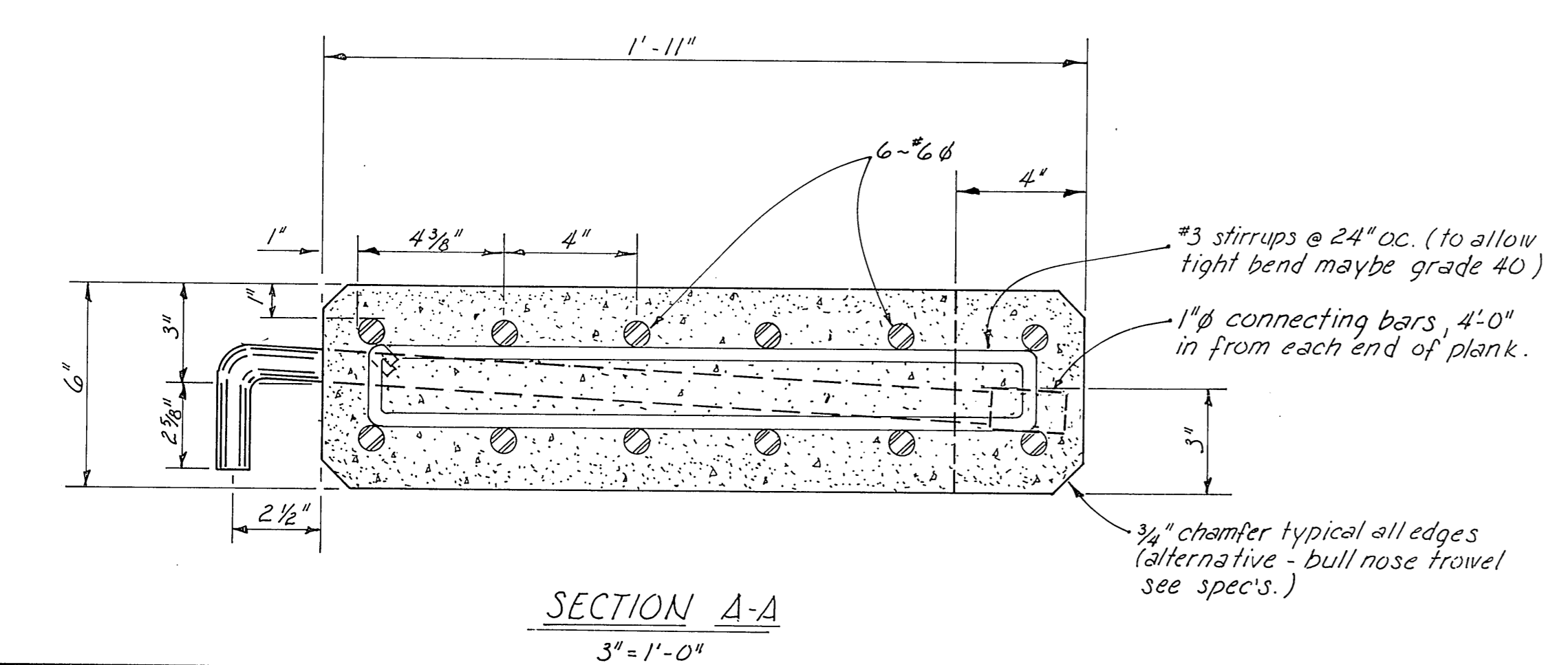
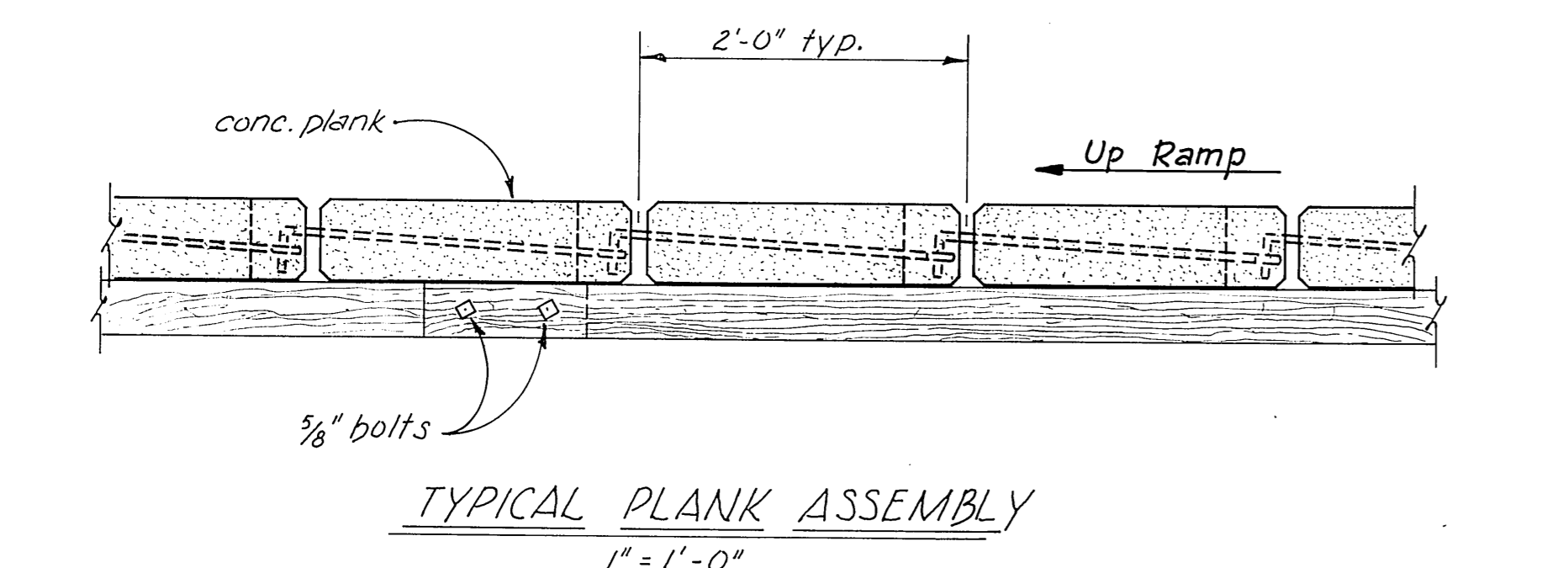
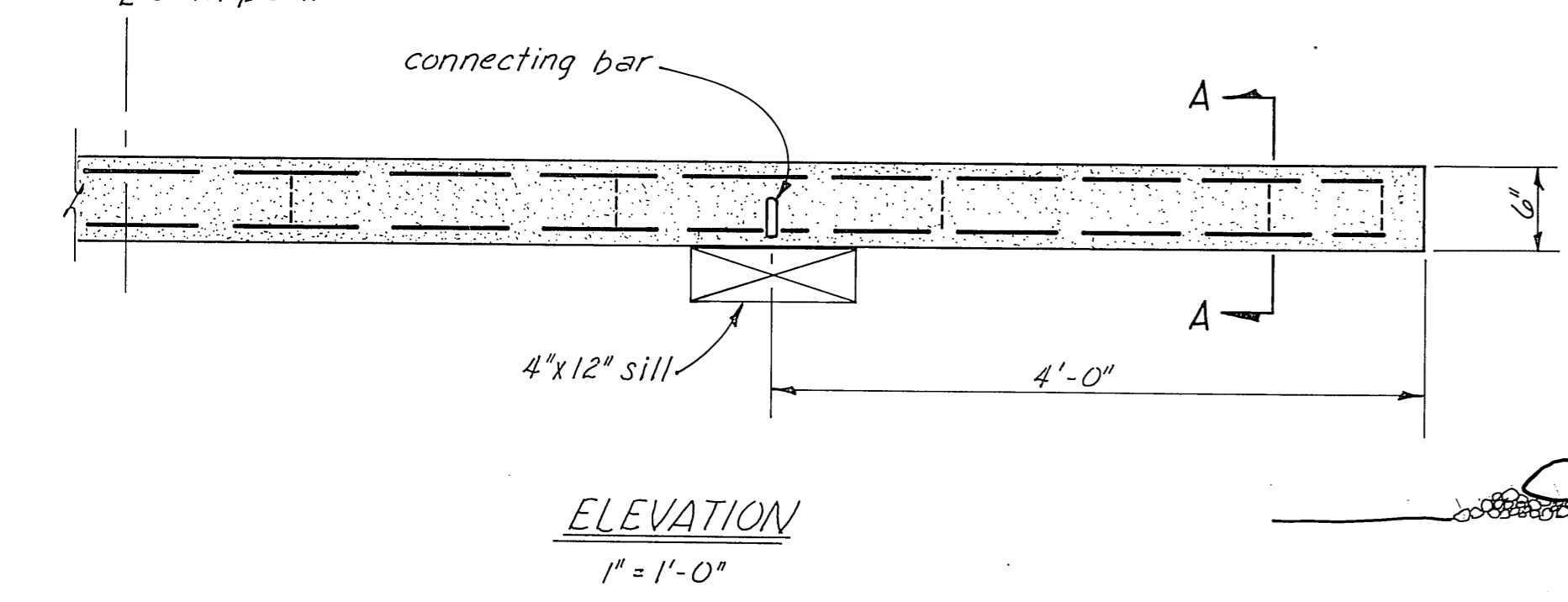
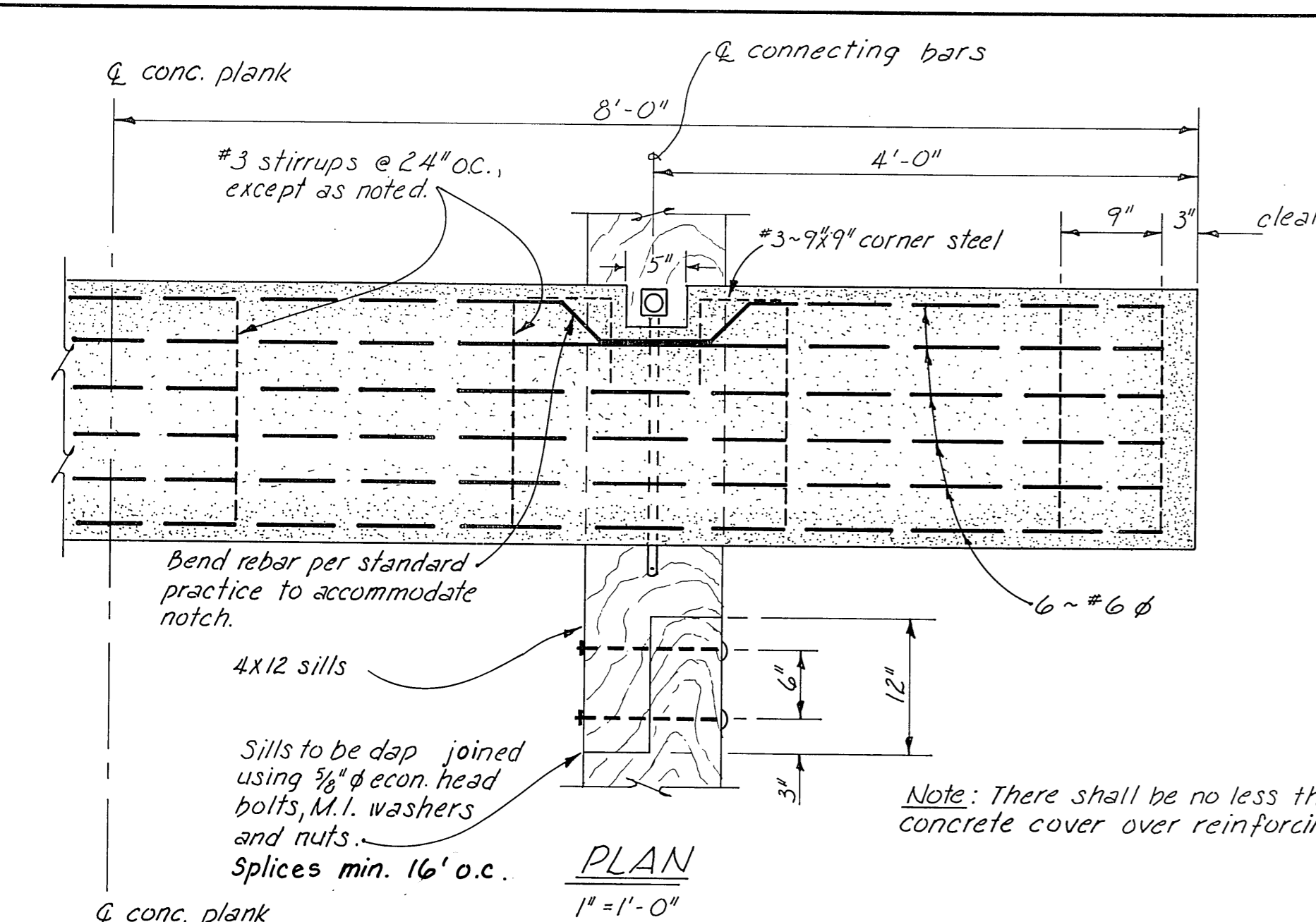
RAMP PROFILE



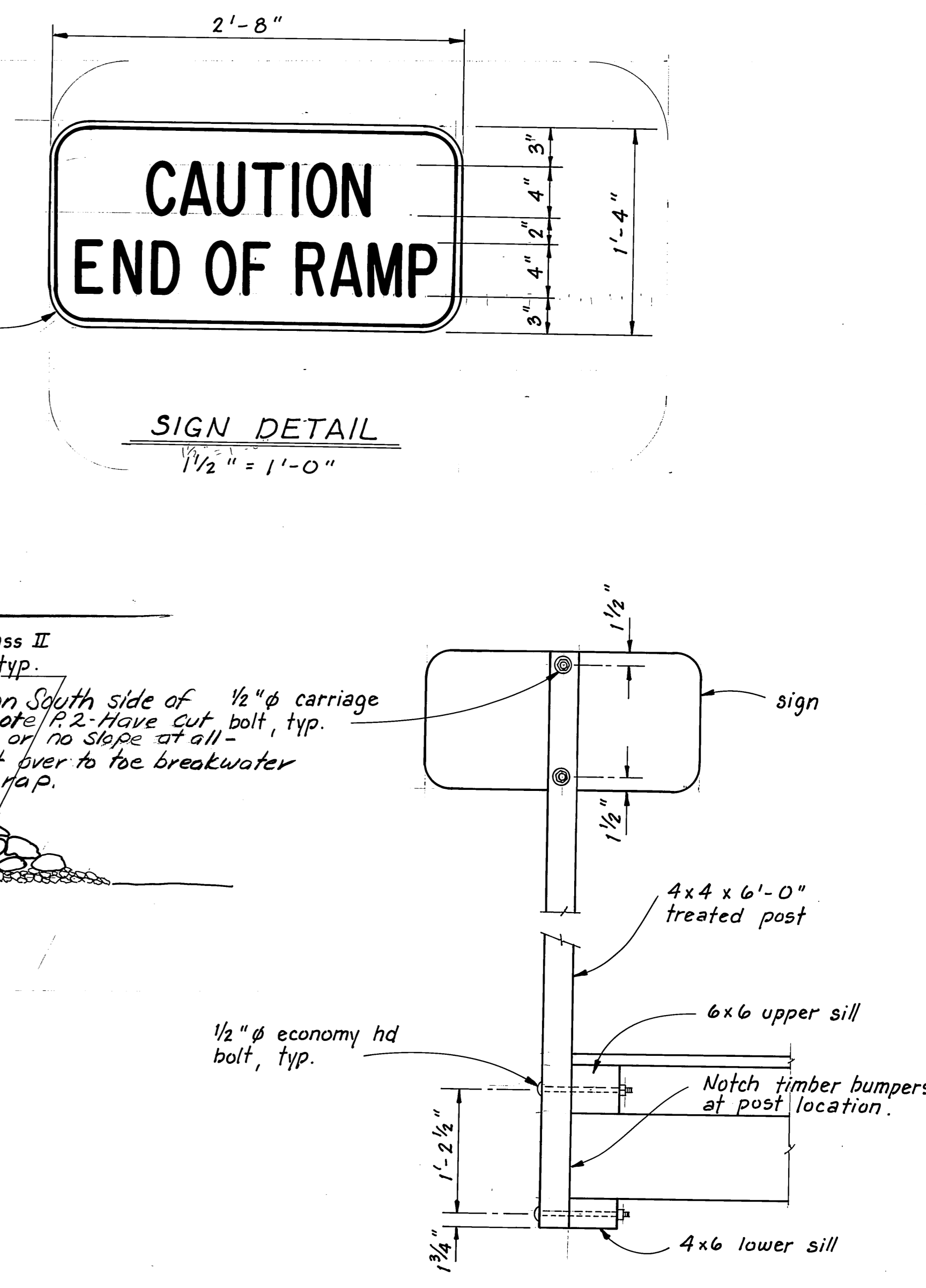
AS BUILT

STAMP		DO NOT SCALE THIS DRAWING - USE DIMENSIONS	
STATE OF ALASKA DEPARTMENT OF TRANSPORTATION AND PUBLIC FACILITIES			
Wrangell		Alaska	
TYPICAL SECTIONS			
DESIGNED <i>JDB/TS</i>	CHECKED _____	DRAWN <i>TS</i>	DATE <i>April 1988</i>
PROJECT NUMBER <i>69714</i>	SHEET <i>3</i> OF <i>6</i>		



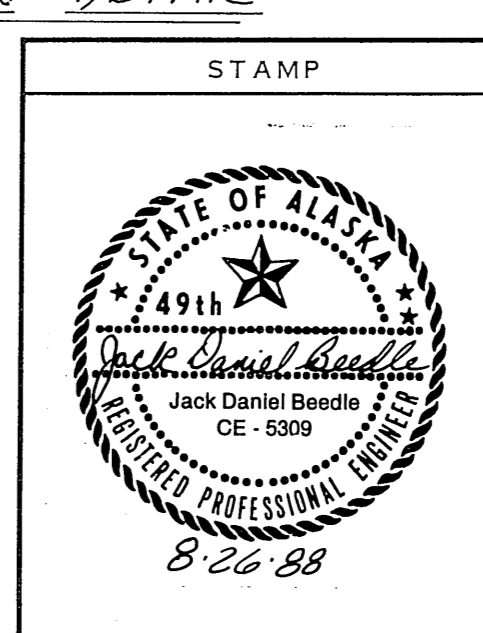


Note: Concrete $f_c \geq 5000$ psi
Reinforcing steel $f_c = 60,000$ psi

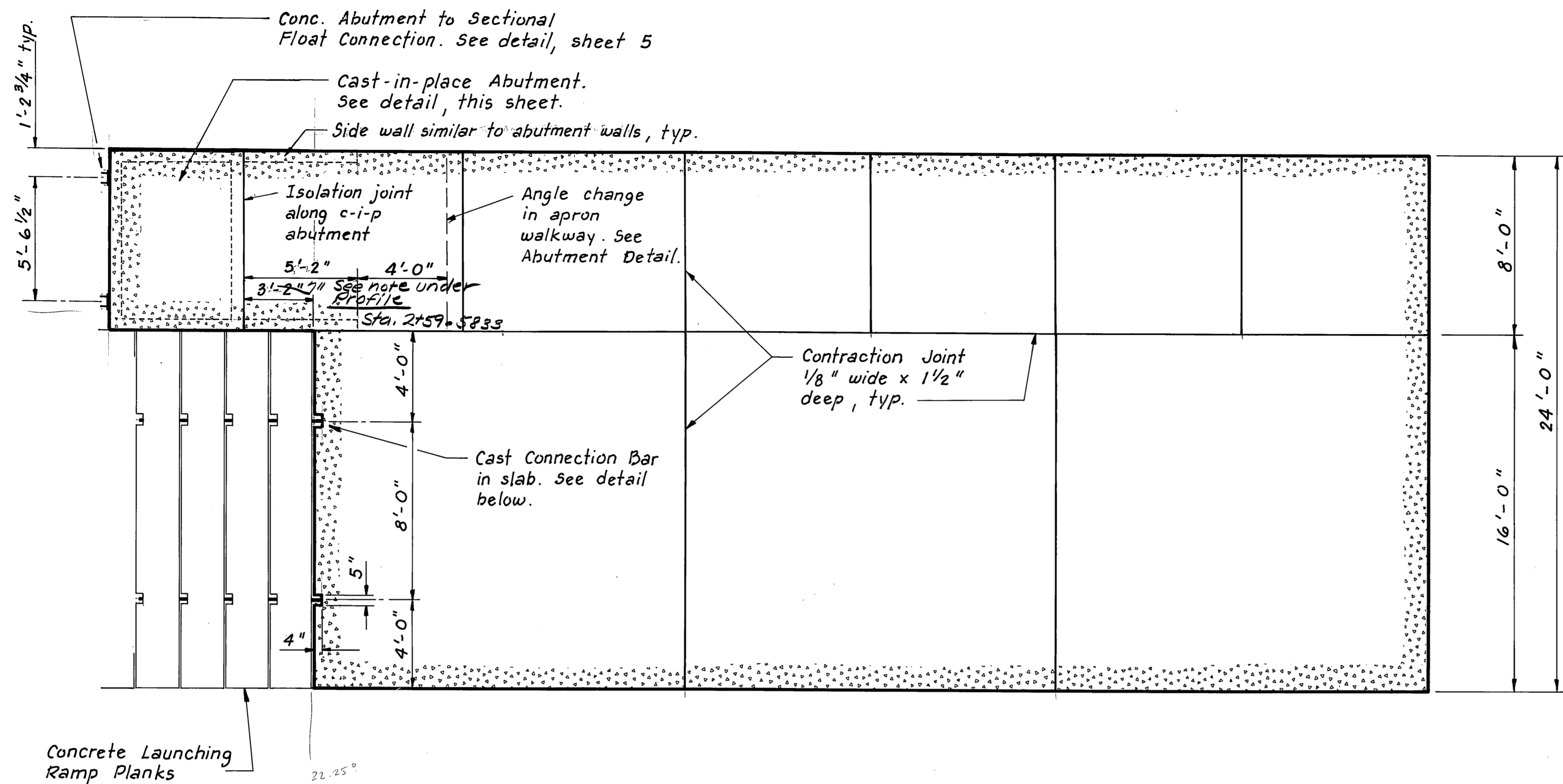


AS BUILT

NOTE: Scales shown are not accurate for reduced drawings.
DO NOT SCALE THIS DRAWING - USE DIMENSIONS
STATE OF ALASKA
DEPARTMENT OF TRANSPORTATION AND PUBLIC FACILITIES
Wrangell Alaska

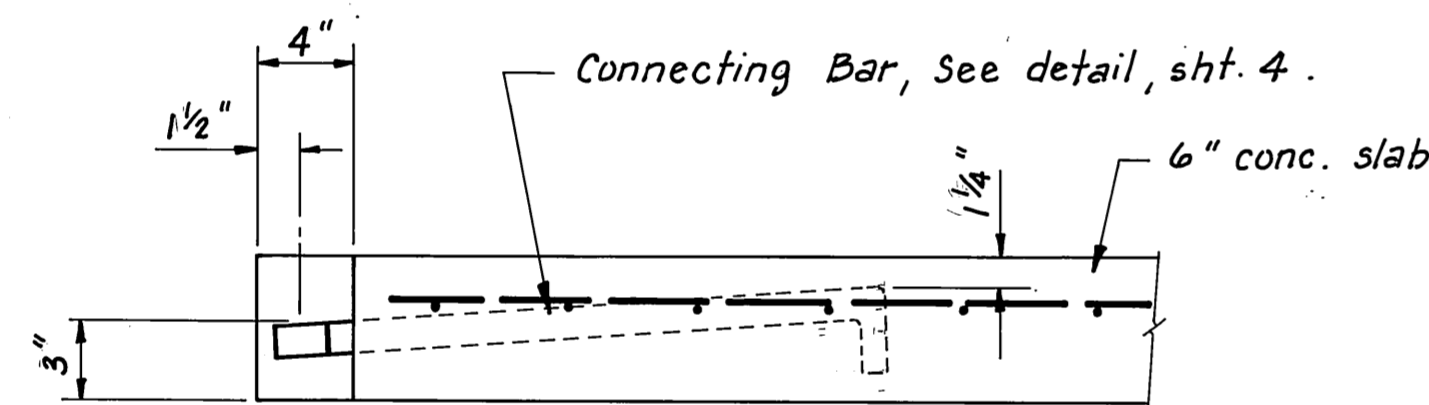


SCALE As Noted	SURVEYED	
DESIGNED	DRAWN G.R.F.	
CHECKED	DATE April 1988	
PROJECT NUMBER 69714	SHEET 4 OF 6	

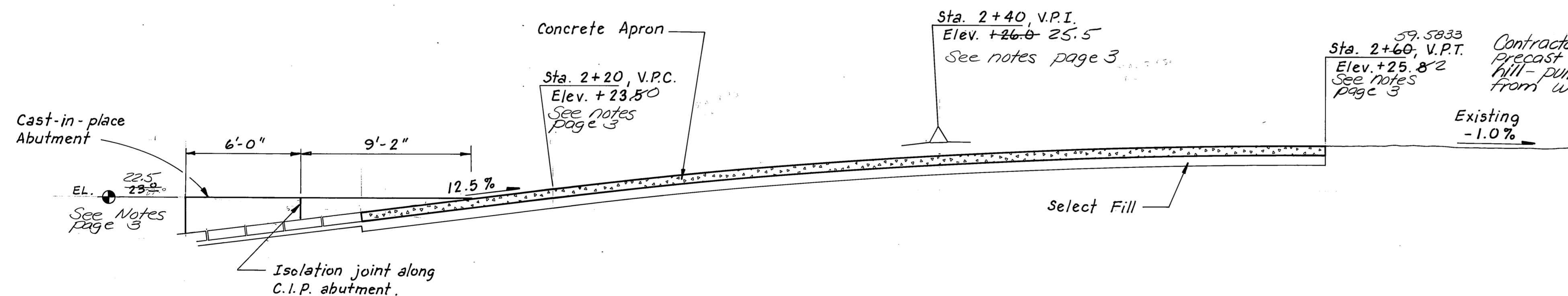


Concrete Launching Ramp Planks

PLAN

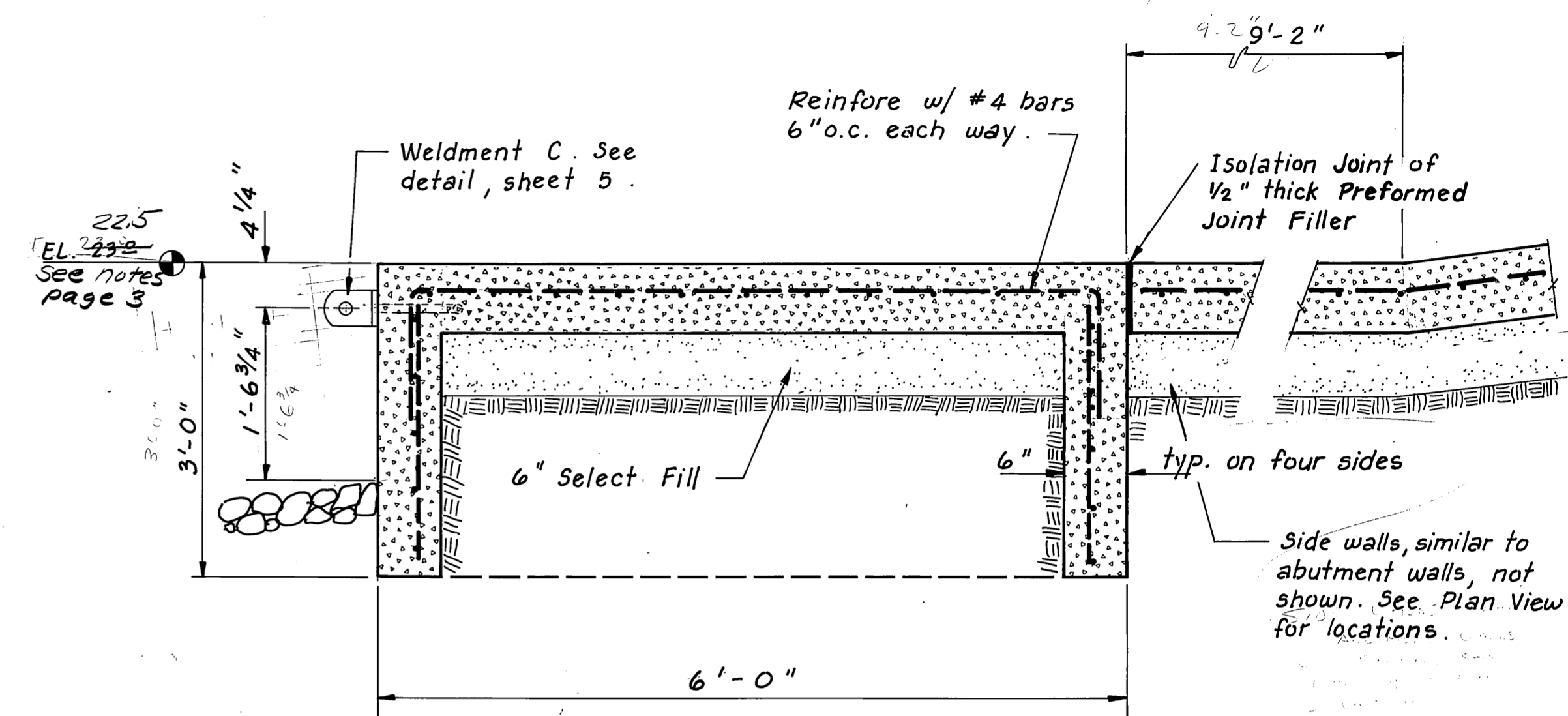
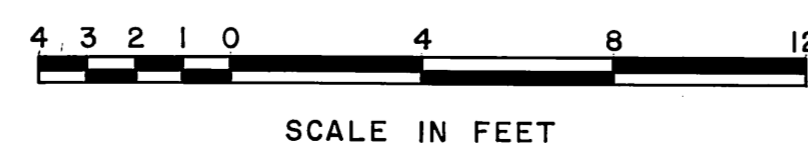


CONNECTING BAR IN SLAB

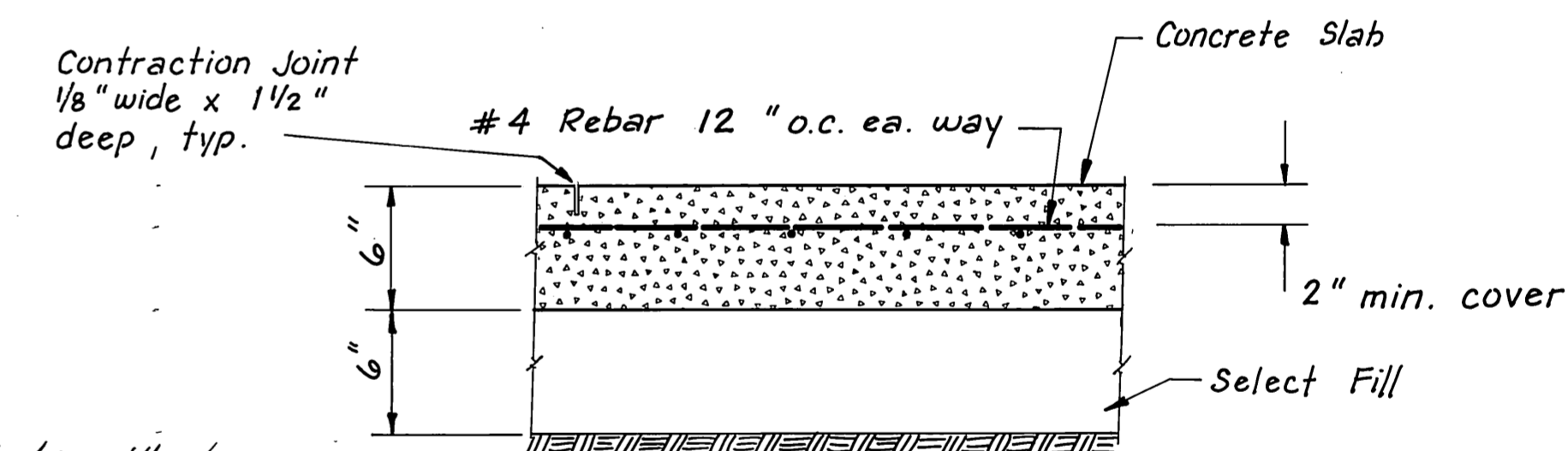


PROFILE

APRON DETAILS



CAST-IN-PLACE ABUTMENT DETAIL



APRON TYPICAL SECTION



AS BUILT

	DO NOT SCALE THIS DRAWING - USE DIMENSIONS			
	STATE OF ALASKA			
	DEPARTMENT OF TRANSPORTATION AND PUBLIC FACILITIES			
	Wrangell		Alaska	
CONCRETE APRON DETAILS				
DESIGNED <u>JDB</u>	CHECKED _____	DRAWN <u>TS</u>	DATE <u>April 1988</u>	
PROJECT NUMBER <u>69714</u>	SHEET <u>6</u> OF <u>6</u>			