



**ESTIMATE OF QUANTITIES - BASIC BID**

ITEM NUMBER	ITEM DESCRIPTION	PAY UNIT	BASIS OF ESTIMATE
202(13)	REMOVAL OF STRUCTURES AND OBSTRUCTIONS	LUMP SUM	TWO LARGE TREES IN TUNNEL
202(14)	REMOVAL OF ROCK DEBRIS	LUMP SUM	40 TONS DEBRIS
501(10)	PRE-MIX CONCRETE	LUMP SUM	0.4 CY CONCRETE, 24 FEET OF 1/2" REBAR, 6X1 FT DEEP DRILL HOLES
501(11)	BAFFLE REPAIR	LUMP SUM	2.8 CY GROUT
640(1)	MOBILIZATION AND DEMOBILIZATION	LUMP SUM	
640(4)	WORKER MEALS AND LODGING PER DIEM	LUMP SUM	
<del>644(2)</del>	<del>TEMPORARY EROSION AND POLLUTION CONTROL</del> DELETED	CONTINGENT SUM	
641(3)	TEMPORARY EROSION AND POLLUTION CONTROL	LUMP SUM	150 FT OF SILT FENCE AROUND STAGING AREA, CONCRETE MIXING AREA AND ROCK DISPOSAL AREA. GEOTEXTILE TO PROTECT 600 FT OF TRAIL. ALL MEASURES NECESSARY TO INSURE DE-WATERED CONDITIONS FOR CONCRETE AND GROUT WHERE REQUIRED.
202(11a)	ADDITIONAL BRACING @ STRUCTURE	LUMP SUM	
202(15)	REMOVAL ADDITIONAL ROCK DEBRIS	LUMP SUM	
<del>644(4)</del>	<del>TEMPORARY EROSION AND POLLUTION CONTROL AMENDMENTS</del> DELETED	<del>CONTINGENT SUM</del>	

**REMOVAL OF ANAN CREEK ROCK DEBRIS-BASIC BID**

BAFFLE INTERVAL	DEPTH (ft)	ESTIMATED TONS
WEIR-B		0
B-C		0
C-D		0
D-E	1.2 to 0.1	2.5
E-F	2.4 to 1.8	11
F-G	1.0	5
G-H	1.1 to 1.0	5
H-I	1.7 to 1.1	7
I-J	0.2	0
J-K	0.2	0
K-L	0.2	0
L-M	-0.5 to 1.0	0
M-N	-1.0 to 1.0	3.5
N-O	0.4 to 2.3	6
TOTAL =		40

**PRE-MIX CONCRETE-BASIC BID**

LOCATION	ESTIMATED CYD
INTAKE STRUCTURE - STOPLOG OPENING	0.4

**ESTIMATE OF QUANTITIES - ALTERNATE A**

ITEM NUMBER	ITEM DESCRIPTION	PAY UNIT	BASIS OF ESTIMATE
202(13)-ALT A	REMOVAL OF STRUCTURES AND OBSTRUCTIONS	LUMP SUM	3.6 CFT STOPLOGS
501(10)-ALT A	PRE-MIX CONCRETE	LUMP SUM	1.0 CY CONCRETE, 96 FEET OF 1/2" REBAR, 51X1 FT & 4x6" DEEP DRILL HOLES
640(4)-ALT A	WORKER MEALS AND LODGING PER DIEM	LUMP SUM	
641(3)-ALT A	TEMPORARY EROSION AND POLLUTION CONTROL	LUMP SUM	CONCRETE MIXING AREA. ALL MEASURES NECESSARY TO INSURE DE-WATERED CONDITIONS FOR CONCRETE WORK WHERE REQUIRED.


**PRE-MIX CONCRETE-ADDITIVE ALTERNATE A**

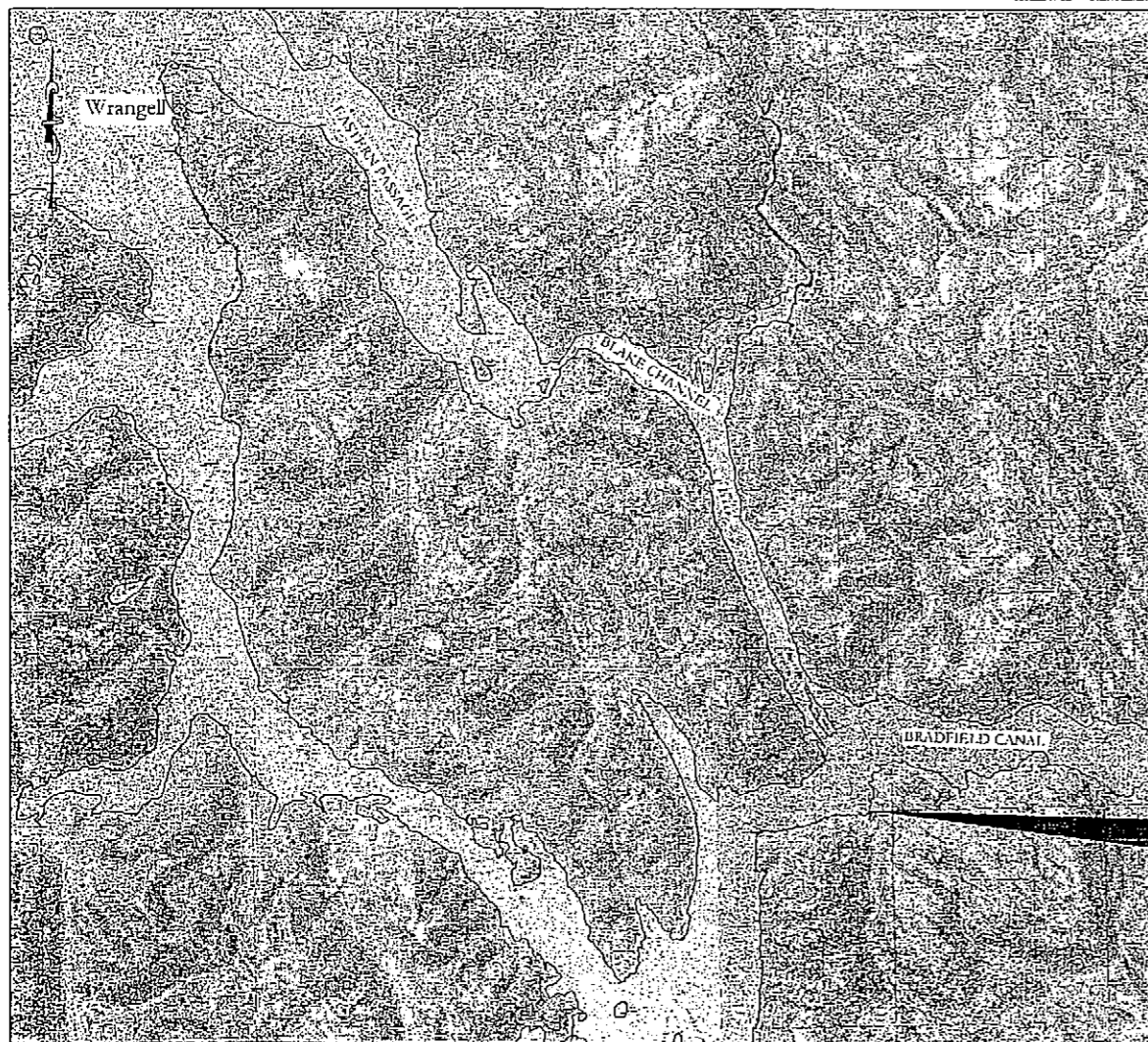
LOCATION	ESTIMATED CYD
FISH ATTRACTION STRUCTURE STOPLOG	0.6
FISH ATTRACTION STRUCTURE HOLE	0.4
TOTAL =	1.0

THE QUANTITIES SHOWN ARE APPROXIMATE. NO ADJUSTMENT IN PRICE WILL BE MADE IF THE QUANTITY FURNISHED IS MORE OR LESS THAN THE ESTIMATED QUANTITY UNLESS SPECIFICALLY STATED OTHERWISE.

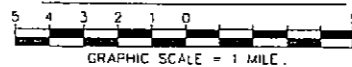
Project As-Built Drawings have been reviewed by the Project Engineer and represent to the best of my knowledge, the project as constructed.  
 PET. BERGAM Date 2/2/09

DO NOT SCALE FROM THESE DRAWINGS USE DIMENSIONS

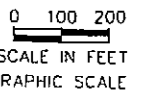
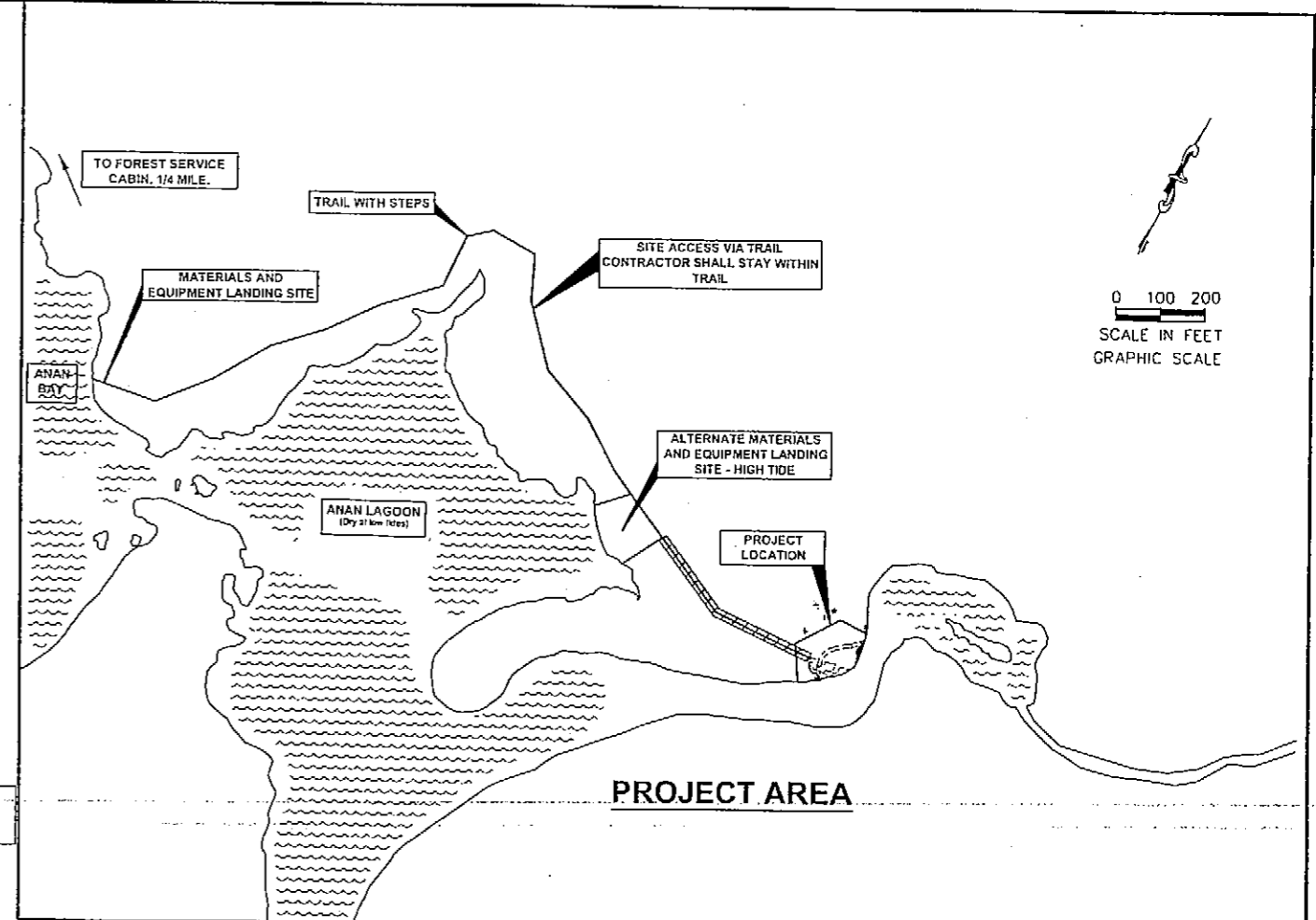
CHECKED BY: P. CARROLL  DESIGNED BY: C. TRIPP DRAWN BY: L. ROBERTSON	STATE OF ALASKA DEPARTMENT OF TRANSPORTATION & PUBLIC FACILITIES SOUTHEAST REGION WRG-AIRPORT MITIGATION FISH LADDER IMPROVEMENTS PROJECT No. 68897 <b>ESTIMATE OF QUANTITIES &amp; SUMMARIES</b>
PATH: Q:\WRG\68897\PLANSET\2-ESTIMATES.DWG TAB: 2	PROJECT DESIGNATION: 68897 YEAR: 2007 SHEET NO.: 2 TOTAL SHEETS: 10



**LOCATION MAP**



PROJECT LOCATION  
ANAN CREEK

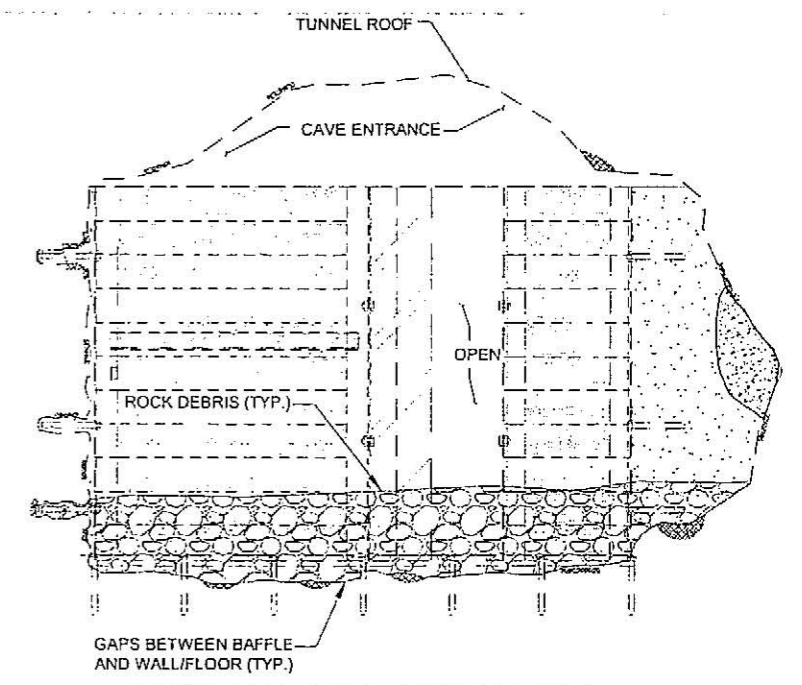
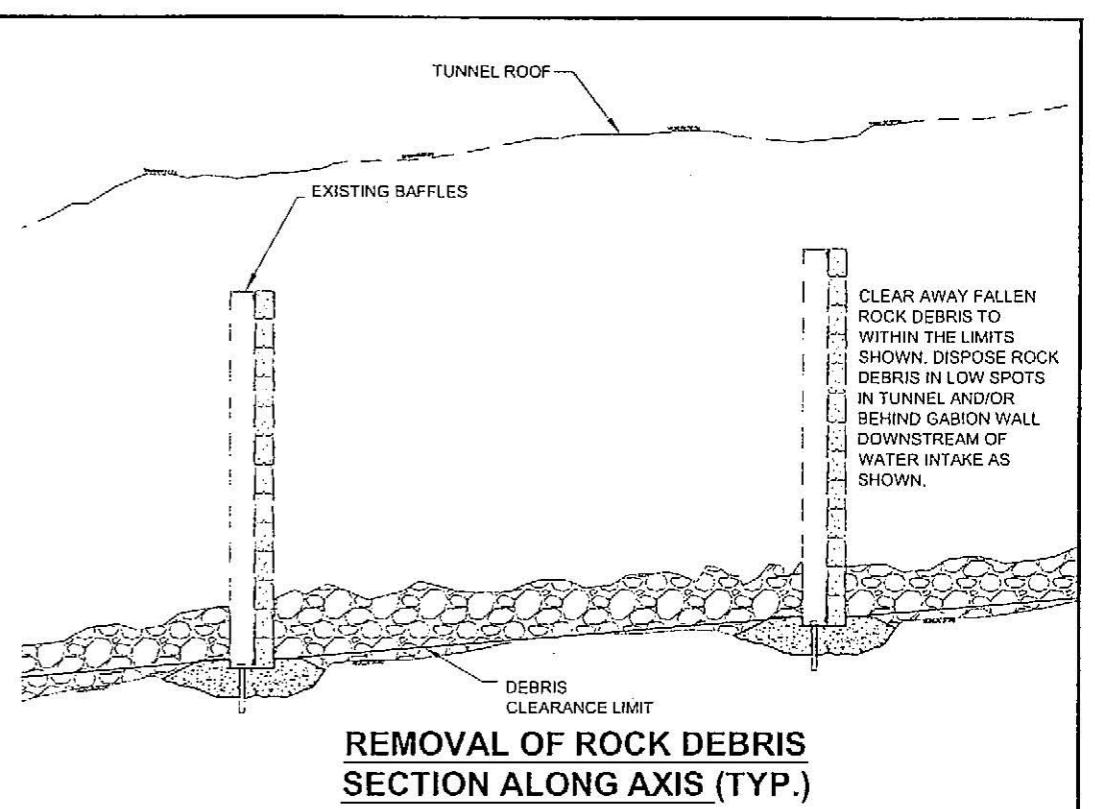
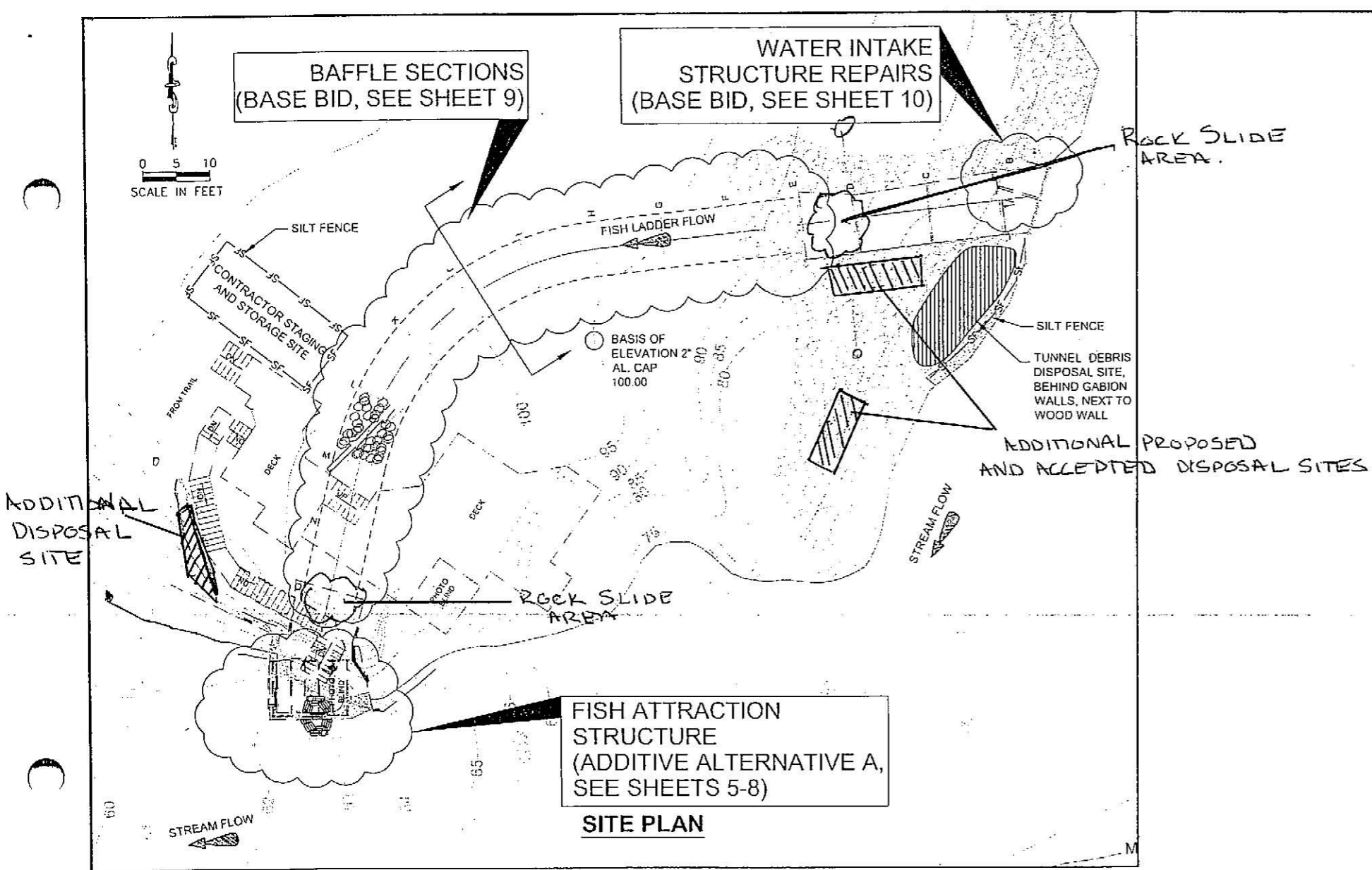


CONTRACTOR SHALL STAY ON THE TRAIL. THE CONTRACTOR SHALL NOT WORK OUTSIDE LANDING SITES OR THE PROJECT AREA  
 [Hatched pattern symbol] GEOTEXTILE EROSION CONTROL ON TRAIL

DO NOT SCALE FROM THESE DRAWINGS USE DIMENSIONS

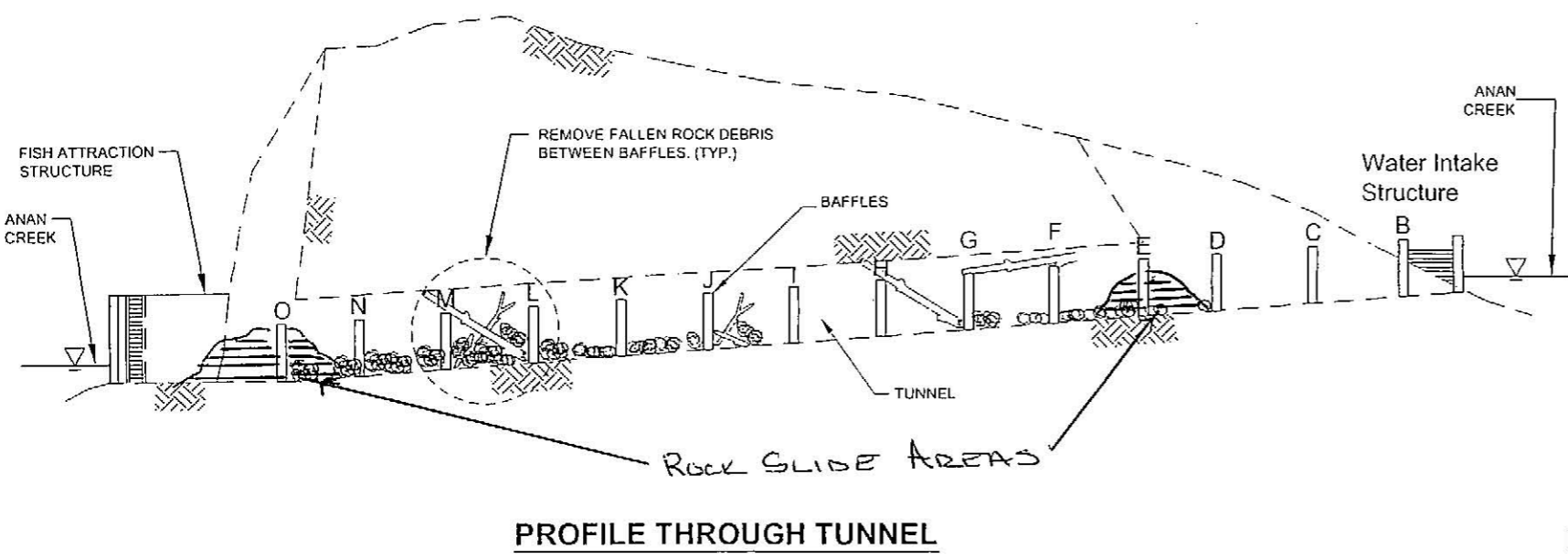
CHECKED BY: P. CARROLL  DESIGNED BY: C. TRIPP DRAWN BY: L. ROBERTSON PATH: Q:\WRG\68897\PLANSETA1_TSMT.DWG TAB: 3		STATE OF ALASKA DEPARTMENT OF TRANSPORTATION & PUBLIC FACILITIES SOUTHEAST REGION  <b>WRG-AIRPORT MITIGATION FISH          LADDER IMPROVEMENTS          PROJECT No. 68897</b>  <b>LOCATION MAP &amp;          PROJECT AREA</b>									
REVISIONS <table border="1"> <thead> <tr> <th>NO.</th> <th>DATE</th> <th>DESCRIPTION</th> </tr> </thead> <tbody> <tr> <td> </td> <td> </td> <td> </td> </tr> </tbody> </table>		NO.	DATE	DESCRIPTION				PROJECT DESIGNATION 68897	YEAR 2007	SHEET NO. 3	TOTAL SHEETS 10
NO.	DATE	DESCRIPTION									

Project As-Built Drawings have been reviewed by the Project Engineer and represent to the best of my knowledge, the project as constructed.  
 PE T. BERGMAN Date 2/2/09



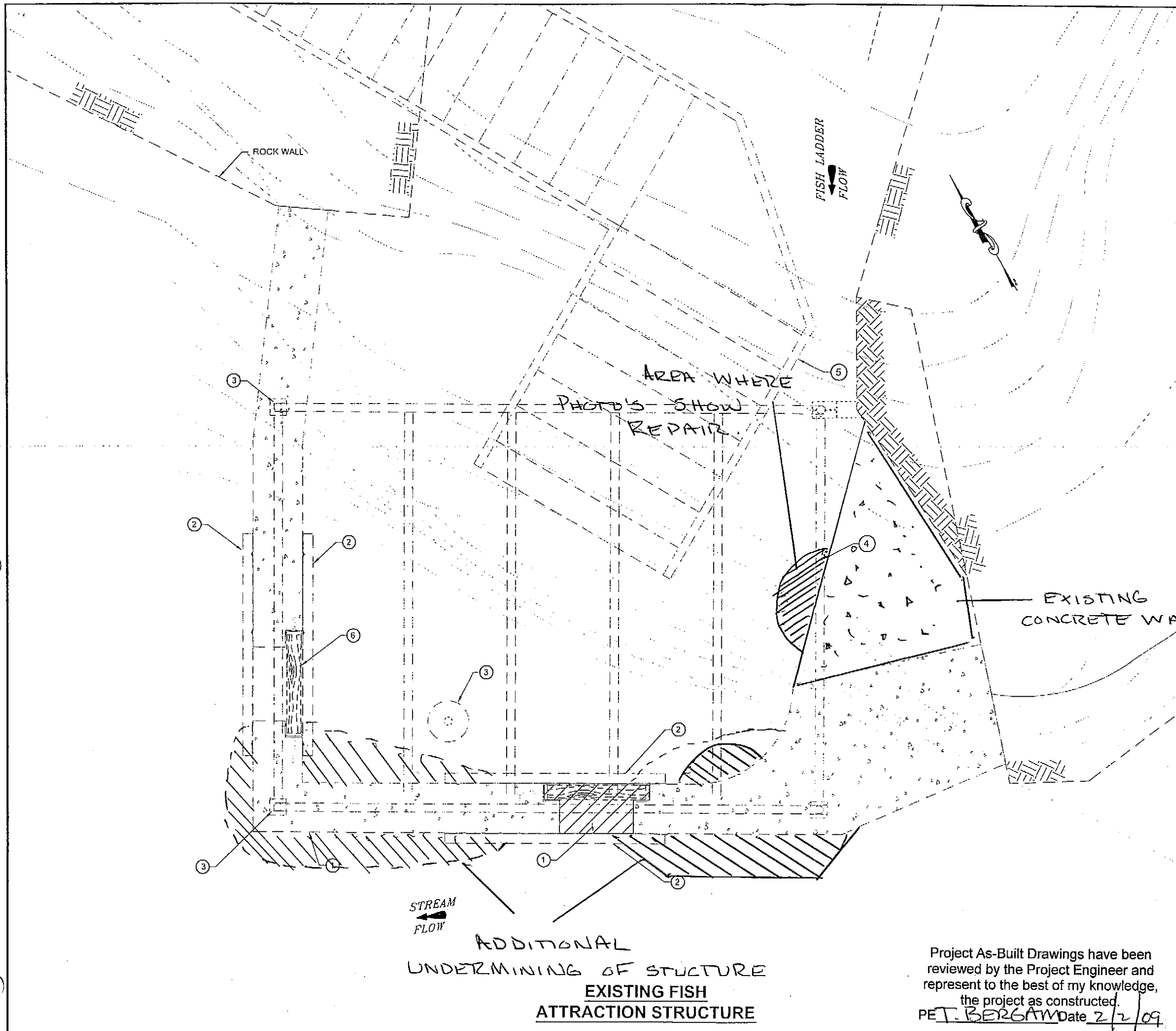
**REMOVAL OF ROCK DEBRIS CROSS-SECTION (TYP.)**

DO NOT SCALE FROM THESE DRAWINGS USE DIMENSIONS



Project As-Built Drawings have been reviewed by the Project Engineer and represent to the best of my knowledge, the project as constructed.  
 PET. BERGAM Date 2/2/09

CHECKED BY: P. CARROLL 		STATE OF ALASKA DEPARTMENT OF TRANSPORTATION & PUBLIC FACILITIES SOUTHEAST REGION	
DESIGNED BY: C. TRIPP DRAWN BY: L. ROBERTSON		<b>WRG-AIRPORT MITIGATION FISH LADDER IMPROVEMENTS PROJECT No. 68897</b>	
PATH: Q:\WRG\68897\PLANSET\TIF1.DWG TAB: 4		<b>ANAN CREEK SITE PLAN</b>	
REVISIONS NO. DATE DESCRIPTION		PROJECT DESIGNATION 68897	YEAR 2007
		SHEET NO. 4	TOTAL SHEETS 10



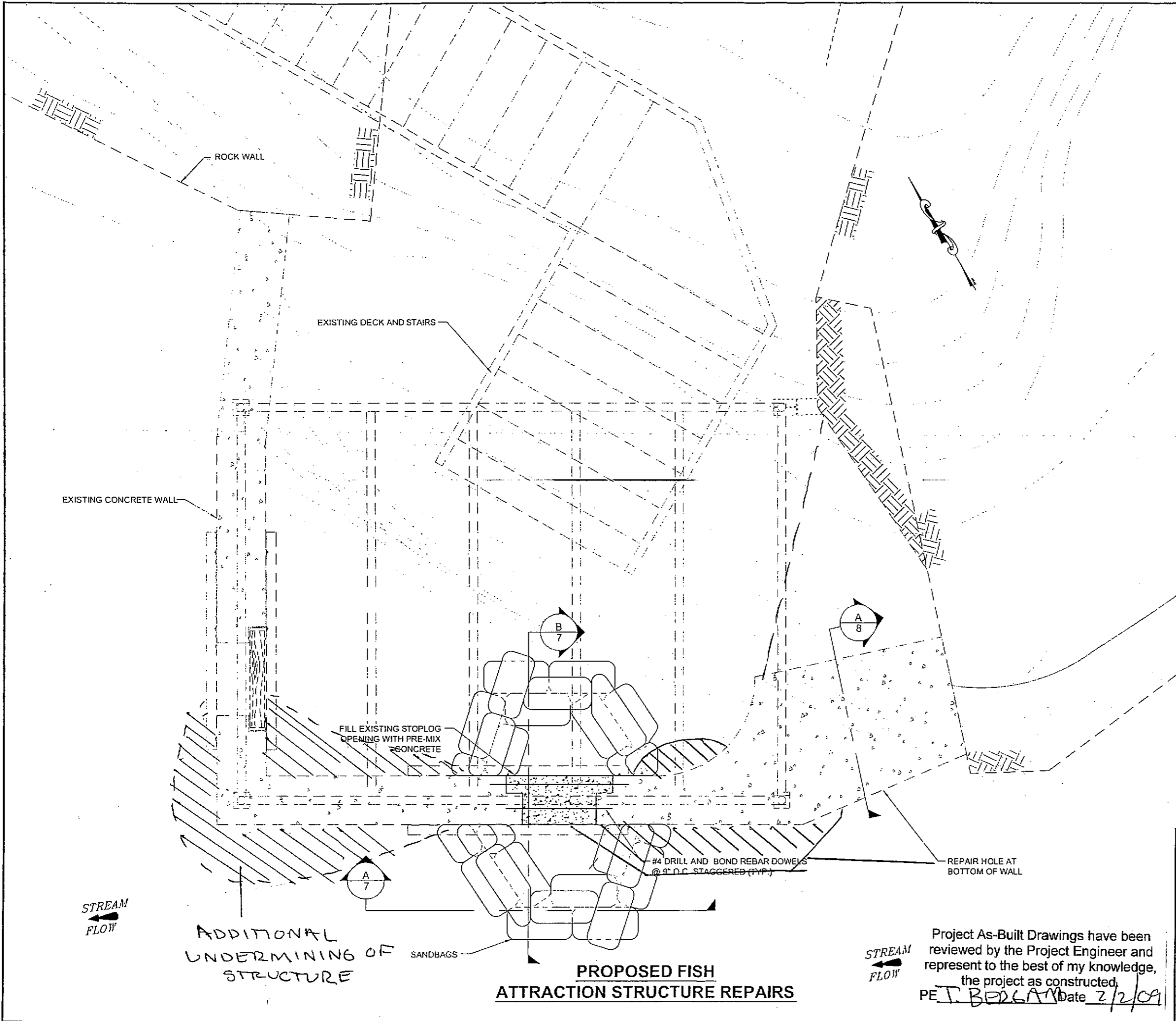
- DEMOLITION NOTES:**
- ① REMOVE AND DISPOSE STOPLOG.
  - ② ANGLE IRON - DO NOT DISTURB.
  - ③ OBSERVATION DECK SUPPORT
  - ④ OBSERVATION DECK - MAY TEMPORARILY REMOVE TO GAIN ACCESS.
  - ⑤ WOOD STAIRS. - DO NOT DISTURB.
  - ⑥ STOPLOG - MAY TEMPORARILY REMOVE TO GAIN ACCESS
  - ⑦ ANGLE IRON - DO NOT DISTURB

DO NOT SCALE FROM THESE DRAWINGS USE DIMENSIONS

CHECKED BY: P. CARROLL		STATE OF ALASKA DEPARTMENT OF TRANSPORTATION & PUBLIC FACILITIES SOUTHEAST REGION							
		WRG-AIRPORT MITIGATION FISH LADDER IMPROVEMENTS PROJECT No. 68897							
		<b>FISH ATTRACTION STRUCTURE DEMOLITION (ADDITIONAL ALTERNATIVE A)</b>							
DESIGNED BY: C. TRIPP		PROJECT DESIGNATION: 68897							
DRAWN BY: L. ROBERTSON		YEAR: 2007	SHEET NO: 5						
PATH: D:\WRG\68897\PLANSET\ANAN_CREEK.DWG		TOTAL SHEETS: 10							
TAB: 5									
<table border="1"> <thead> <tr> <th>NO.</th> <th>DATE</th> <th>DESCRIPTION</th> </tr> </thead> <tbody> <tr> <td> </td> <td> </td> <td> </td> </tr> </tbody> </table>		NO.	DATE	DESCRIPTION					
NO.	DATE	DESCRIPTION							

Project As-Built Drawings have been reviewed by the Project Engineer and represent to the best of my knowledge, the project as constructed.  
 PET. BERGAM Date 2/2/09

ADDITIONAL UNDERMINING OF STRUCTURE EXISTING FISH ATTRACTION STRUCTURE



SAND FOR SANDBAGS MAY BE OBTAINED FROM TUNNEL DEBRIS.

DO NOT SCALE FROM THESE DRAWINGS USE DIMENSIONS

CHECKED BY: P. CARROLL

DESIGNED BY: C. TRIPP

DRAWN BY: L. ROBERTSON

PATH: Q:\WRG\68897\PLANSET\ANAN\_CREEK.DWG

TAB: 6



STATE OF ALASKA  
DEPARTMENT OF TRANSPORTATION  
& PUBLIC FACILITIES  
SOUTHEAST REGION

WRG-AIRPORT MITIGATION FISH  
LADDER IMPROVEMENTS  
PROJECT No. 68897

**PROPOSED FISH ATTRACTION  
STRUCTURE REPAIR  
(ADDITIVE ALTERNATIVE A)**

Project As-Built Drawings have been reviewed by the Project Engineer and represent to the best of my knowledge, the project as constructed,  
PE T. BERGLAND Date 2/2/09

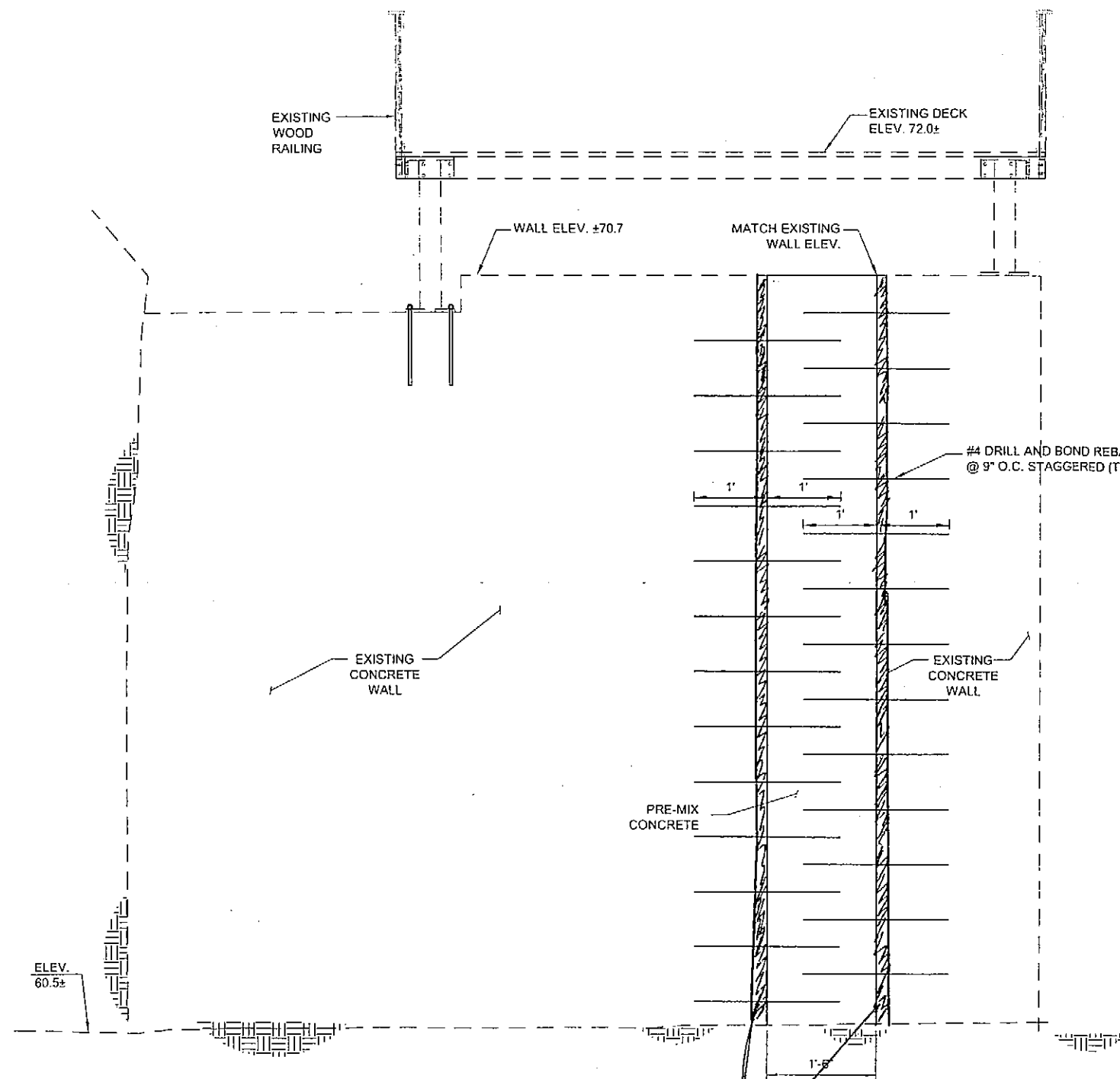
REVISIONS			PROJECT DESIGNATION	YEAR	SHEET NO.	TOTAL SHEETS
NO.	DATE	DESCRIPTION	68897	2007	6	10

ADDITIONAL UNDERMINING OF STRUCTURE

**PROPOSED FISH ATTRACTION STRUCTURE REPAIRS**

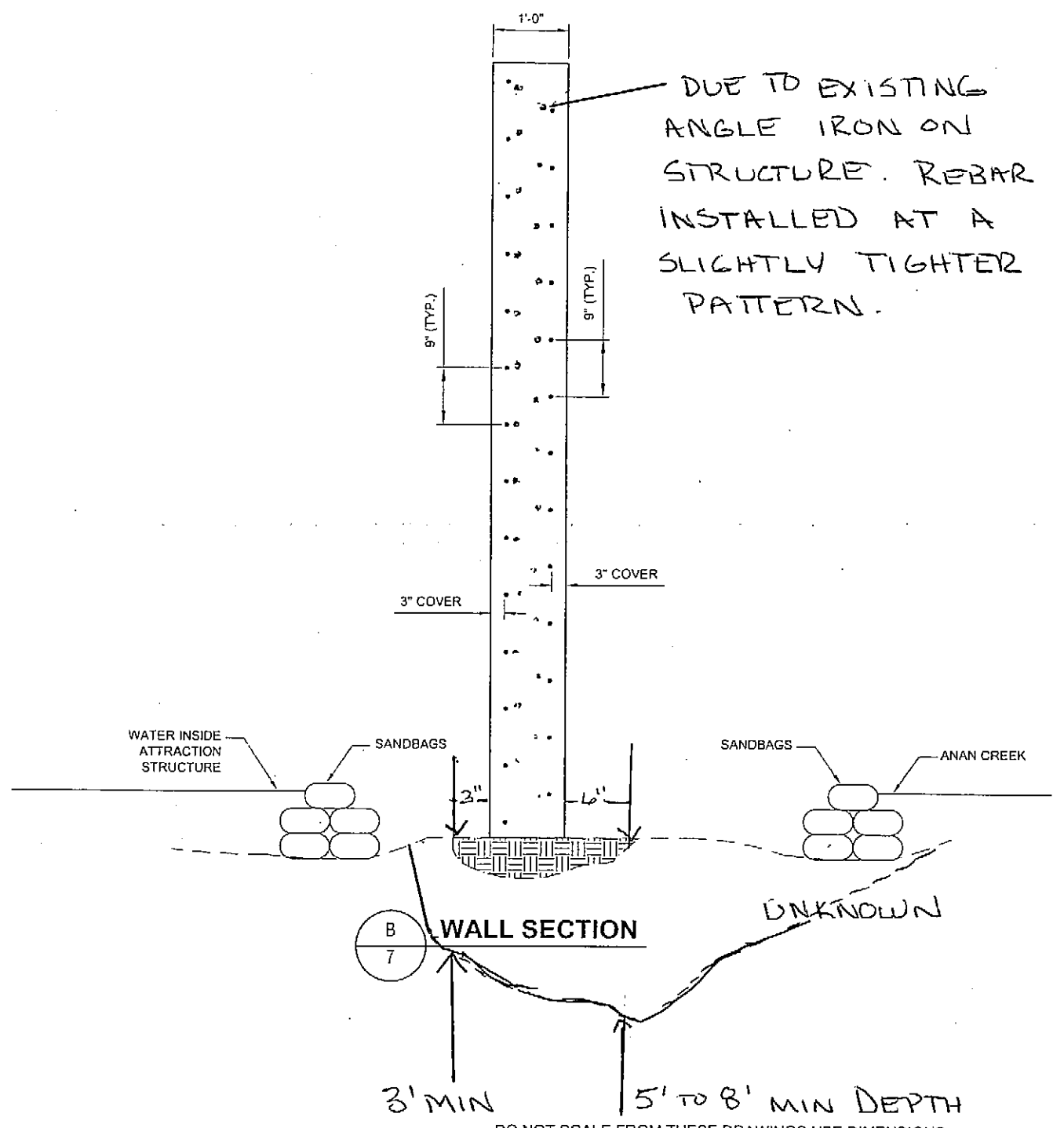
STREAM FLOW

STREAM FLOW



A  
7  
WALL ELEVATION


EXISTING ANGLE IRON ON EDGES



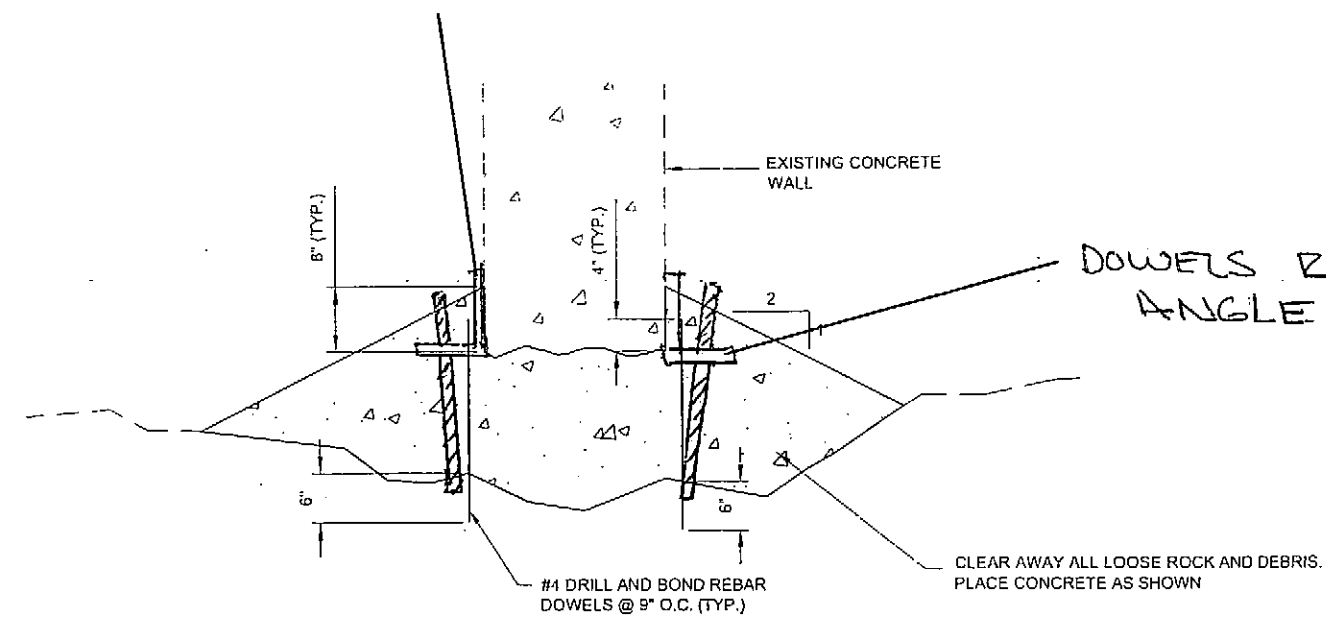
B  
7  
WALL SECTION

DO NOT SCALE FROM THESE DRAWINGS USE DIMENSIONS

Project As-Built Drawings have been reviewed by the Project Engineer and represent to the best of my knowledge, the project as constructed.  
PE J. BERGAN Date 2/2/09

CHECKED BY: P. CARROLL  DESIGNED BY: C. TRIPP DRAWN BY: L. ROBERTSON PATH: Q:\WRG\68897\PLANS\ET\ANAN_CREEK.DWG TAB: 7		STATE OF ALASKA DEPARTMENT OF TRANSPORTATION & PUBLIC FACILITIES SOUTHEAST REGION WRG-AIRPORT MITIGATION FISH LADDER IMPROVEMENTS PROJECT No. 68897 <b>FISH ATTRACTION STRUCTURE DETAILS (ADDITIVE ALTERNATIVE A)</b>												
<table border="1"> <thead> <tr> <th colspan="3">REVISIONS</th> </tr> <tr> <th>NO.</th> <th>DATE</th> <th>DESCRIPTION</th> </tr> </thead> <tbody> <tr> <td> </td> <td> </td> <td> </td> </tr> </tbody> </table>		REVISIONS			NO.	DATE	DESCRIPTION				PROJECT DESIGNATION 68897	YEAR 2007	SHEET NO. 7	TOTAL SHEETS 10
REVISIONS														
NO.	DATE	DESCRIPTION												

EXISTING ANGLE IRON  
WITH PREDRILLED HOLES



DOWELS RUN THROUGH  
ANGLE IRON.

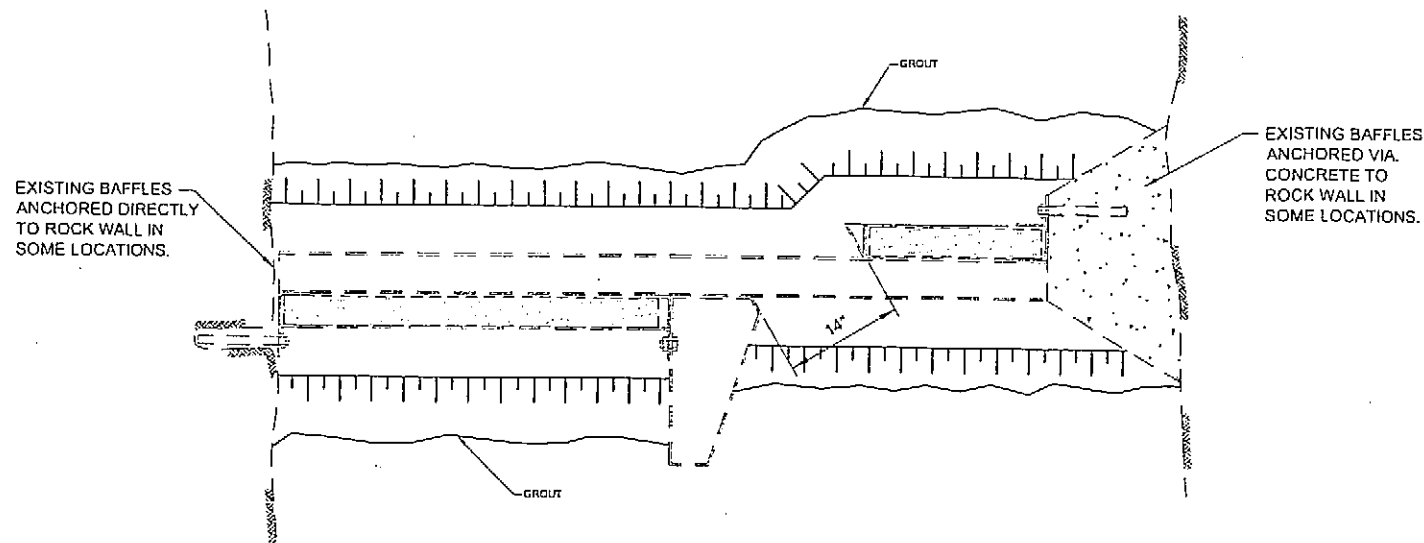
FISH ATTRACTION STRUCTURE  
WALL REPAIR

A  
8

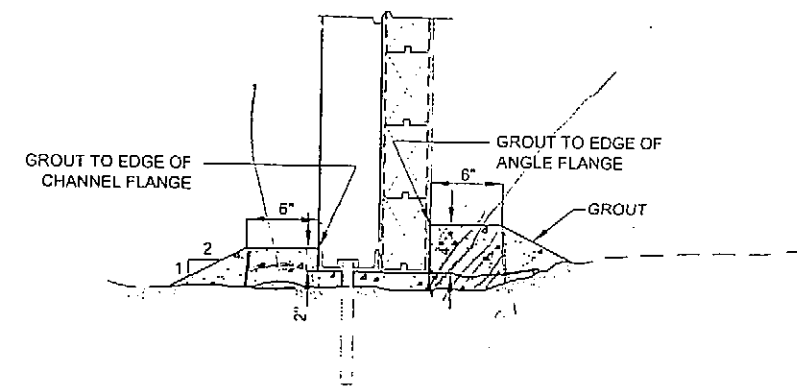
Project As-Built Drawings have been reviewed by the Project Engineer and represent to the best of my knowledge, the project as constructed.  
PE T. BERGMAN Date 2/2/09

DO NOT SCALE FROM THESE DRAWINGS USE DIMENSIONS

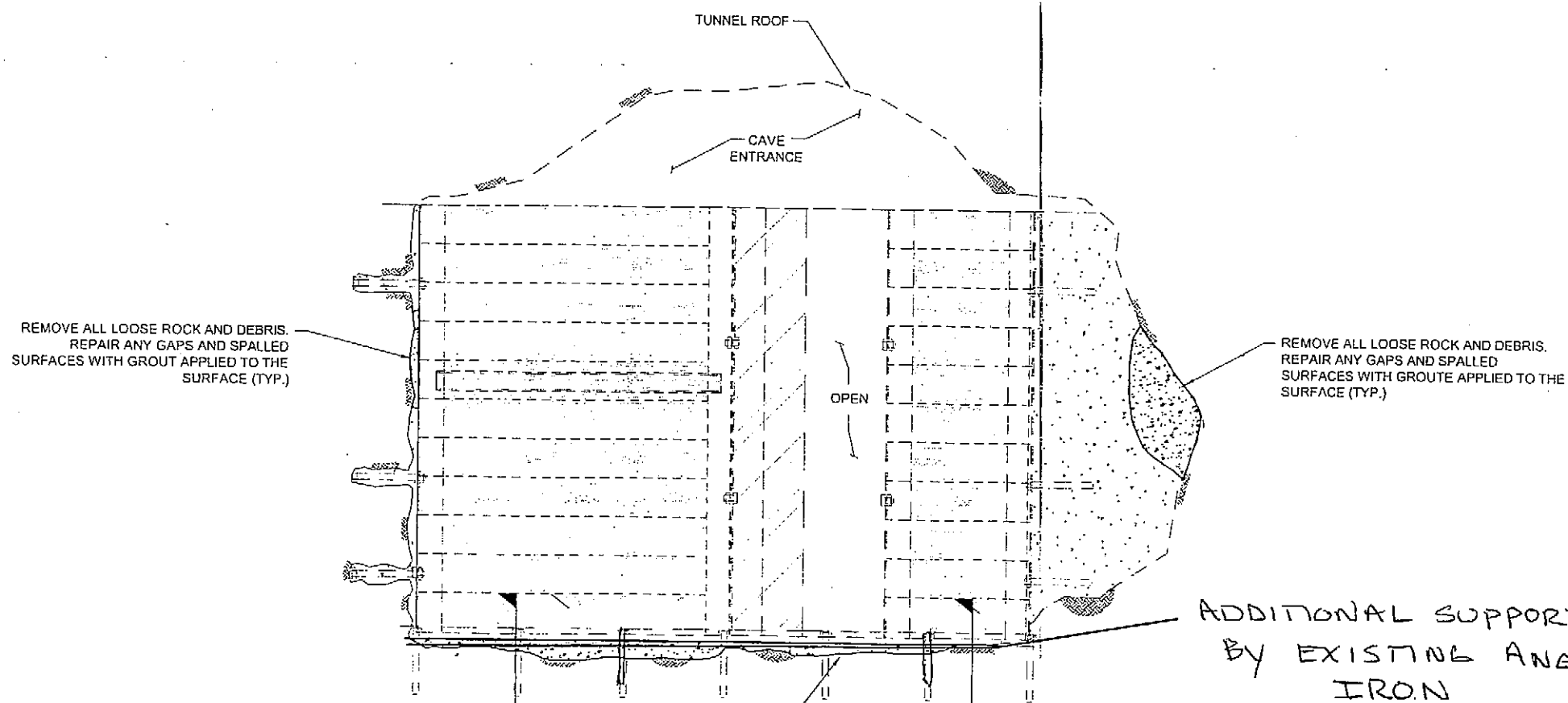
CHECKED BY: P. CARROLL 		STATE OF ALASKA DEPARTMENT OF TRANSPORTATION & PUBLIC FACILITIES SOUTHEAST REGION	
DESIGNED BY: C. TRIPP DRAWN BY: L. ROBERTSON		WRG-AIRPORT MITIGATION FISH LADDER IMPROVEMENTS PROJECT No. 68897	
PATH: O:\WRG\68897\PLANSET\ANAN_CREEK.DWG TAB: 8		<b>FISH ATTRACTION          STRUCTURE DETAILS          (ADDITIVE ALTERNATIVE A)</b>	
REVISIONS NO. DATE DESCRIPTION		PROJECT DESIGNATION 68897	YEAR 2007
		SHEET NO. 8	TOTAL SHEETS 10



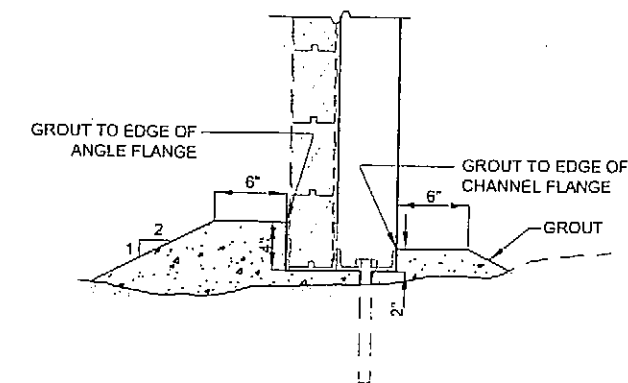
**A**  
9 PLAN (TYP.)



**C**  
9 BAFFLE SECTION (TYP.)

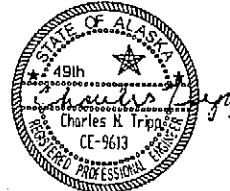


**B**  
9 ELEVATION (TYP.)

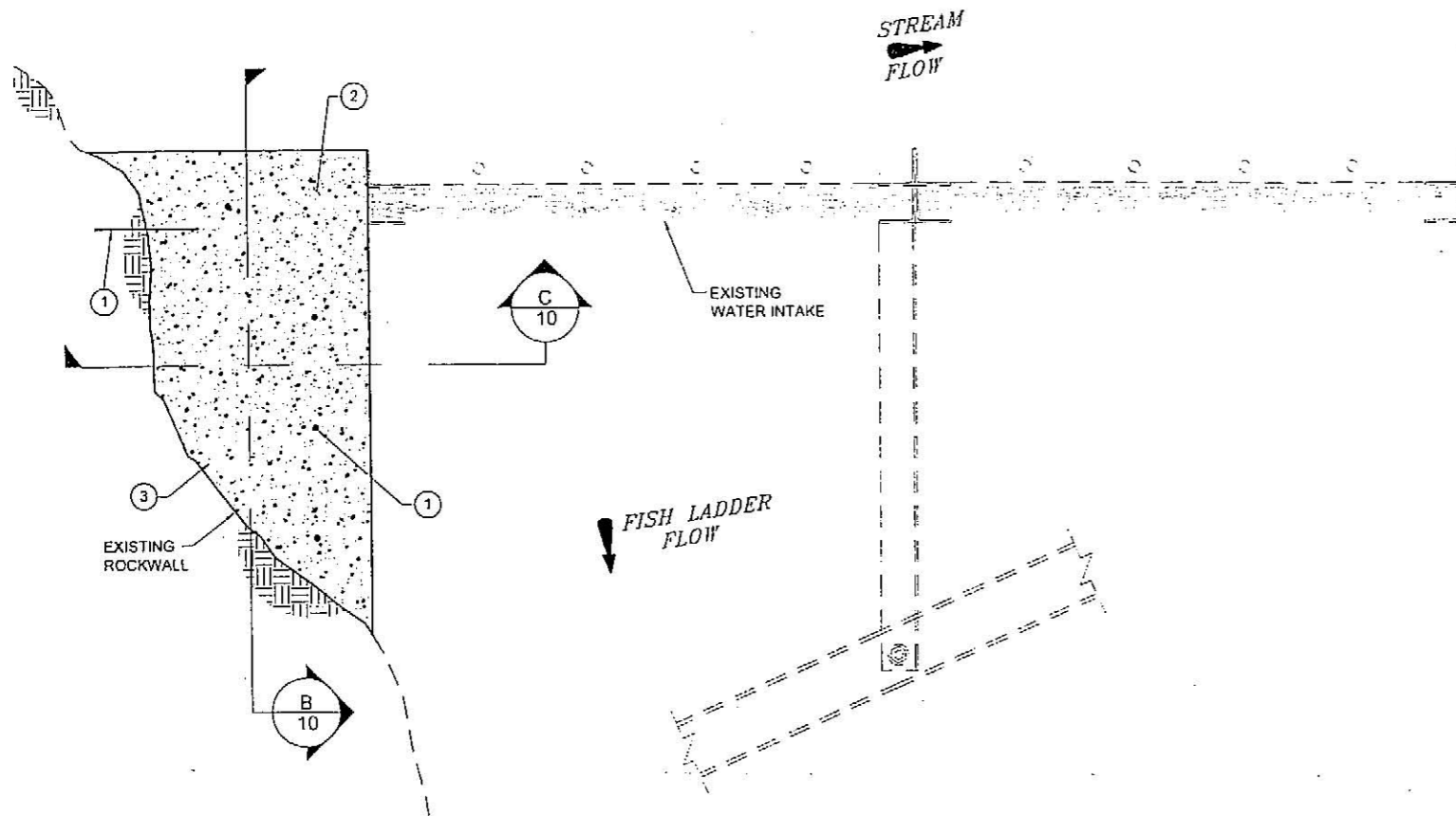


**D**  
9 BAFFLE SECTION (TYP.)

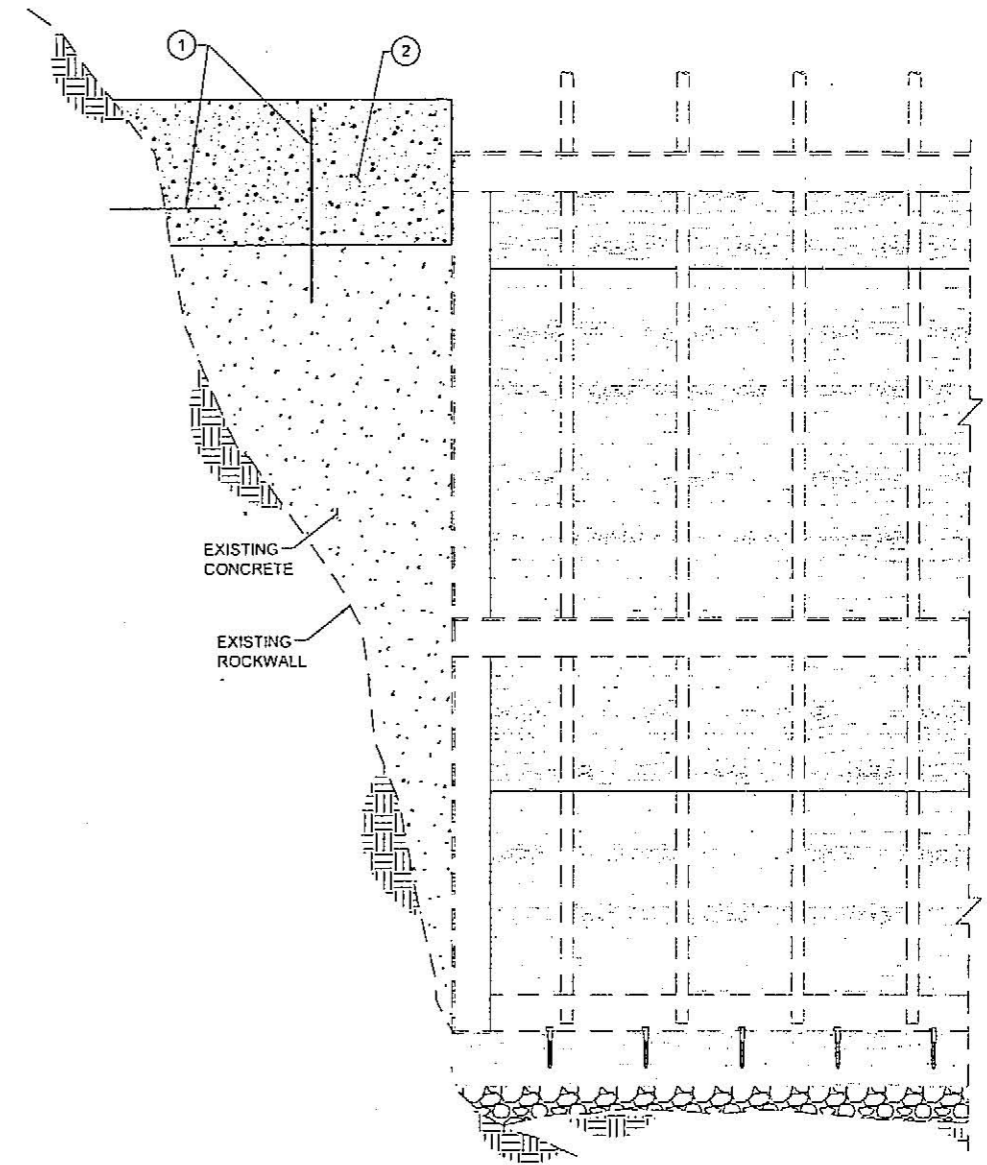
DO NOT SCALE FROM THESE DRAWINGS USE DIMENSIONS

CHECKED BY: P. CARROLL 		STATE OF ALASKA DEPARTMENT OF TRANSPORTATION & PUBLIC FACILITIES SOUTHEAST REGION			
DESIGNED BY: C. TRIPP DRAWN BY: L. ROBERTSON		<b>WRG-AIRPORT MITIGATION FISH LADDER IMPROVEMENTS</b> PROJECT No. 68897 <b>TYPICAL BAFFLE REPAIR DETAILS (BASIC BID)</b>			
PATH: Q:\WRG\68897\PLANS\SETANAN_CREEK.DWG TAB: 9		PROJECT DESIGNATION 68897	YEAR 2007	SHEET NO. 9	TOTAL SHEETS 10
REVISIONS NO. DATE DESCRIPTION					

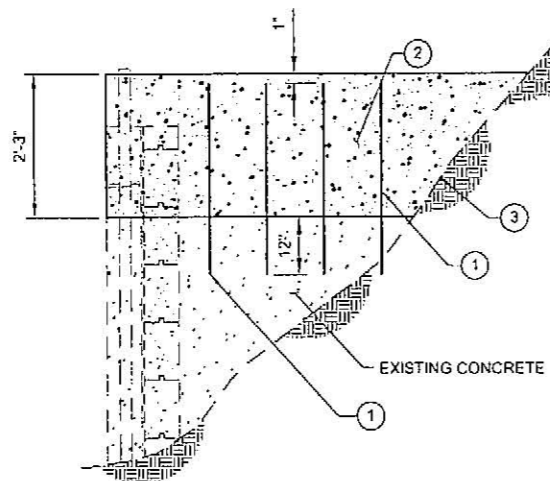
Project As-Built Drawings have been reviewed by the Project Engineer and represent to the best of my knowledge, the project as constructed.  
 PE T. BARGMAN Date 2/2/09



A  
10  
**WATER INTAKE PLAN VIEW**



C  
10  
**WATER INTAKE SECTION**




B  
10  
**WATER INTAKE SECTION**

Project As-Built Drawings have been reviewed by the Project Engineer and represent to the best of my knowledge, the project as constructed.  
 PE T. BERGMAN date 2/2/09

**NOTES:**

- ① #4 DRILL AND BOND REBAR DOWELS @ 9" O.C. STAGGERED (TYP.)
- ② NEW CONCRETE, POUR AGAINST EXISTING CONCRETE & ROCK FACES, MATCH EXISTING CONCRETE FACES.
- ③ CLEAN ROCK SURFACES OF ALL VEGETATION AND SOIL PRIOR TO POURING CONCRETE.

DO NOT SCALE FROM THESE DRAWINGS USE DIMENSIONS

CHECKED BY: P. CARROLL  DESIGNED BY: C. TRIPP DRAWN BY: L. ROBERTSON		STATE OF ALASKA DEPARTMENT OF TRANSPORTATION & PUBLIC FACILITIES SOUTHEAST REGION WRG-AIRPORT MITIGATION FISH LADDER IMPROVEMENTS PROJECT No. 68897 <b>WATER INTAKE          STRUCTURE          (BASIC BID)</b>			
PATH: Q:\WRG\68897\PLANSET\ANAN_CREEK.DWG TAB: 10		PROJECT DESIGNATION 68897	YEAR 2007	SHEET NO. 10	TOTAL SHEETS 10
NO.	DATE	REVISIONS DESCRIPTION			