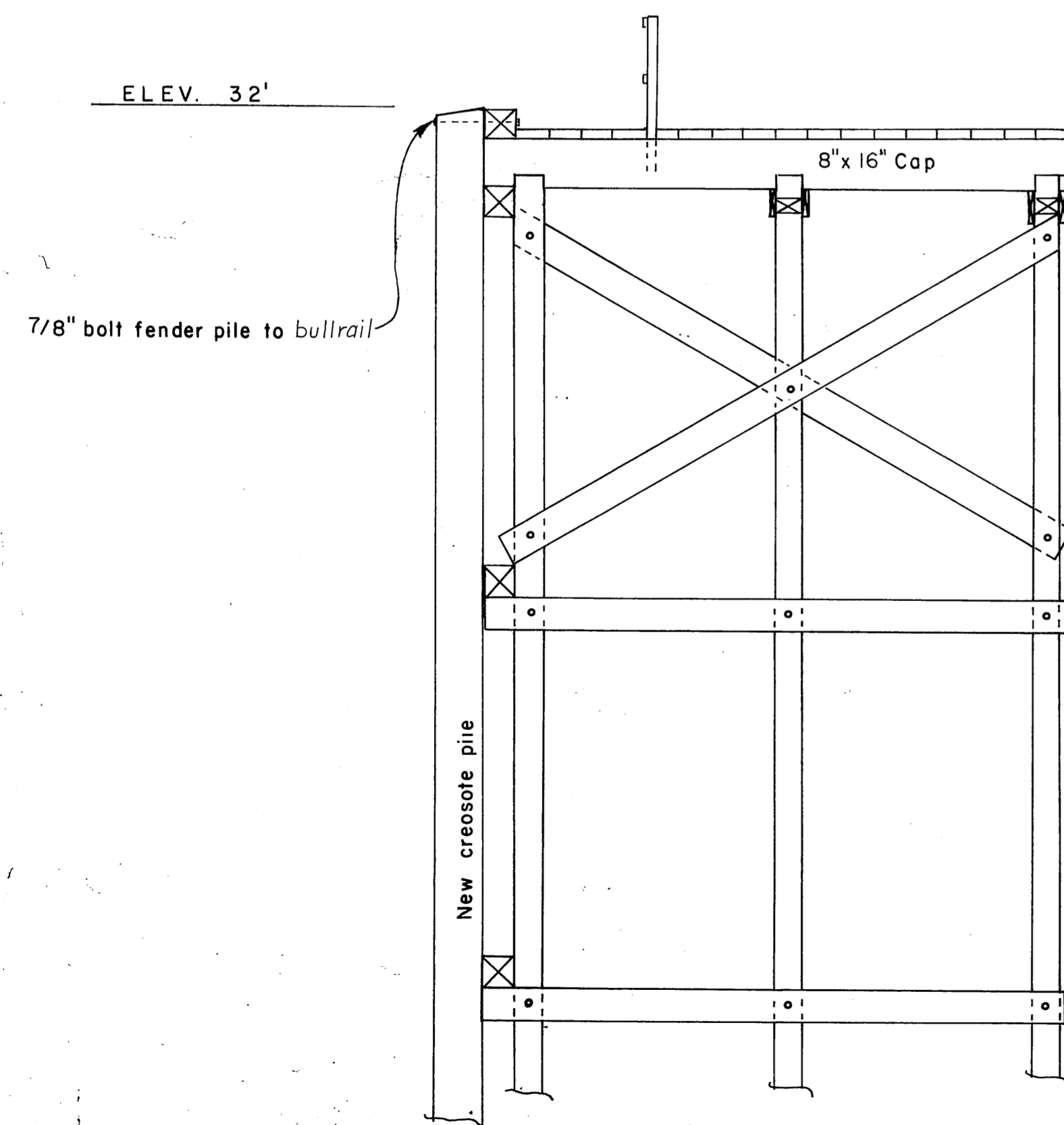
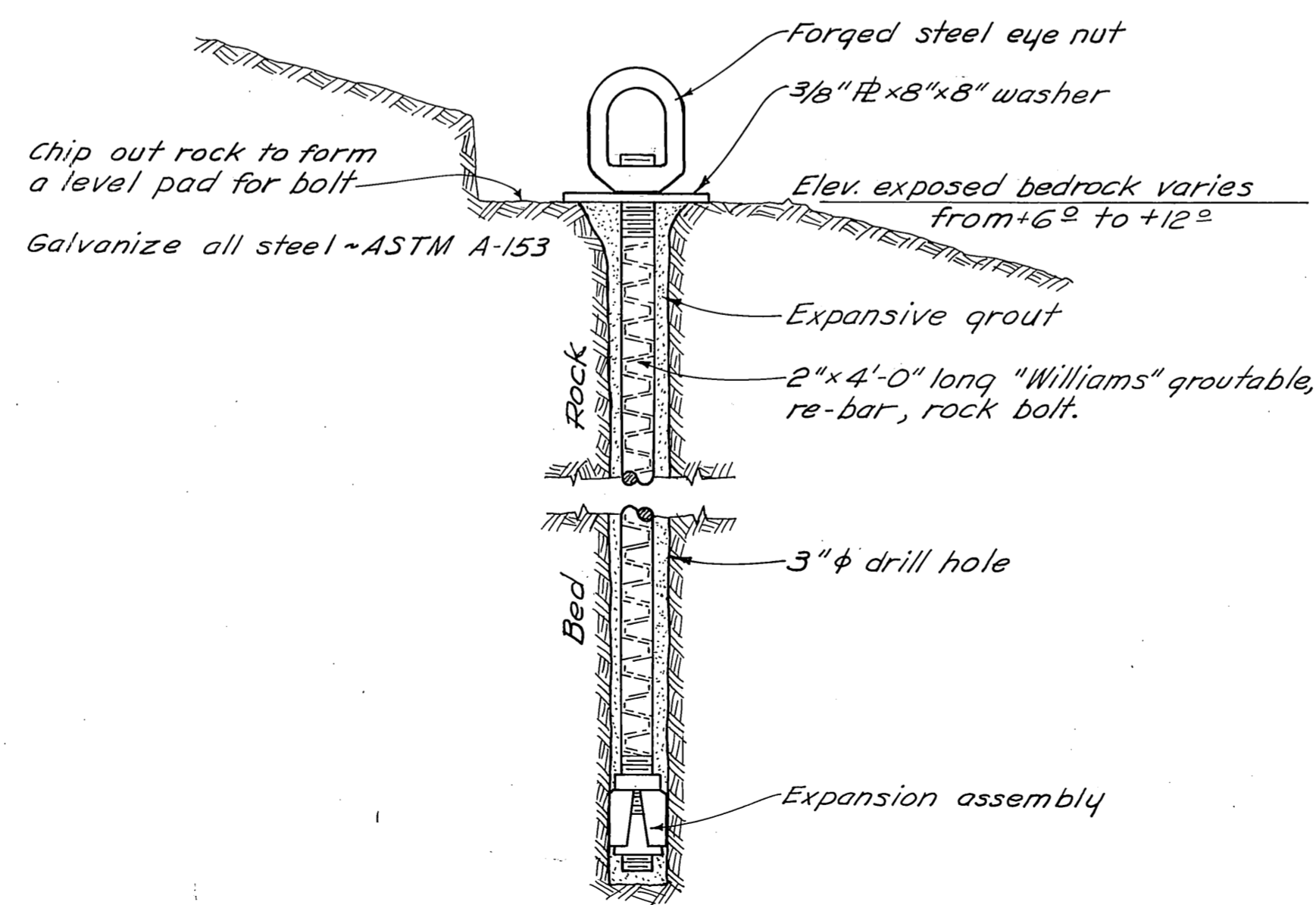


PLAN  
SCALE 1/8" = 1'-0"



TYPICAL EXISTING BENT  
SCALE 1/4" = 1'-0"

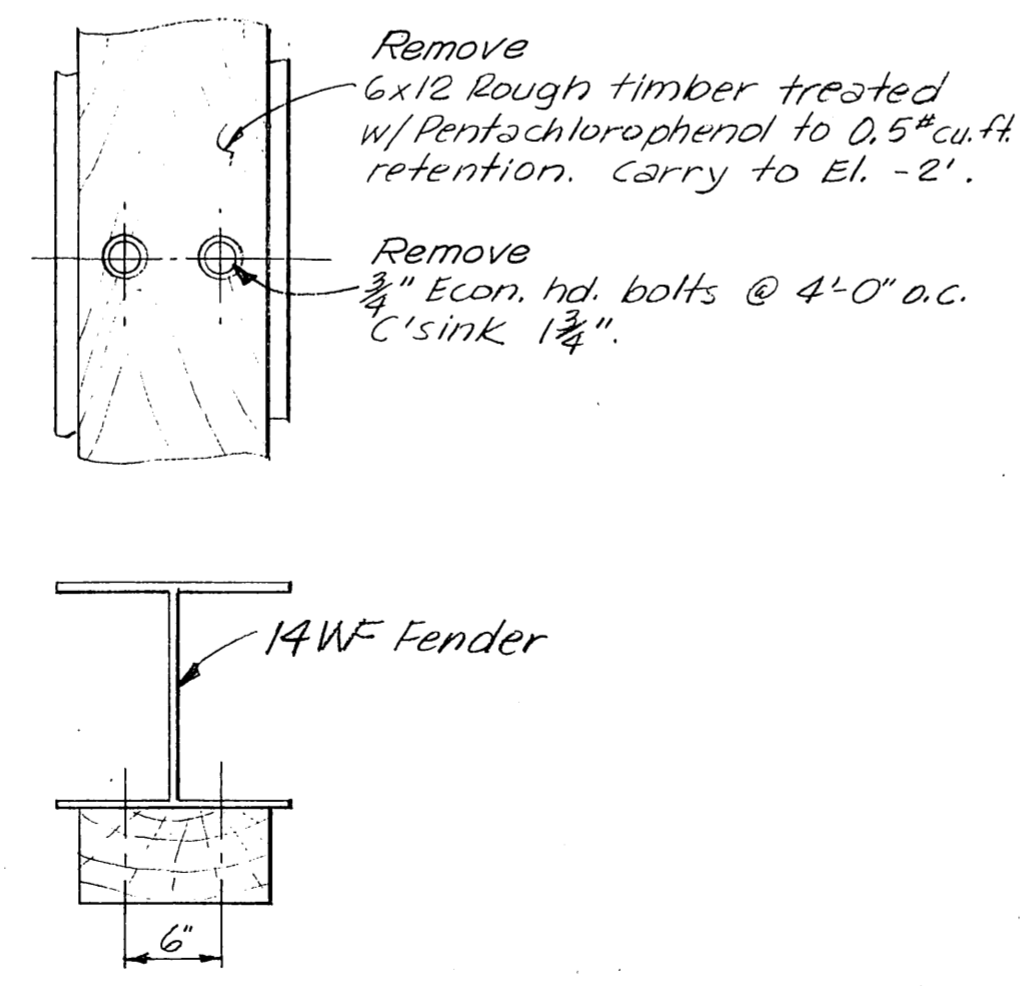
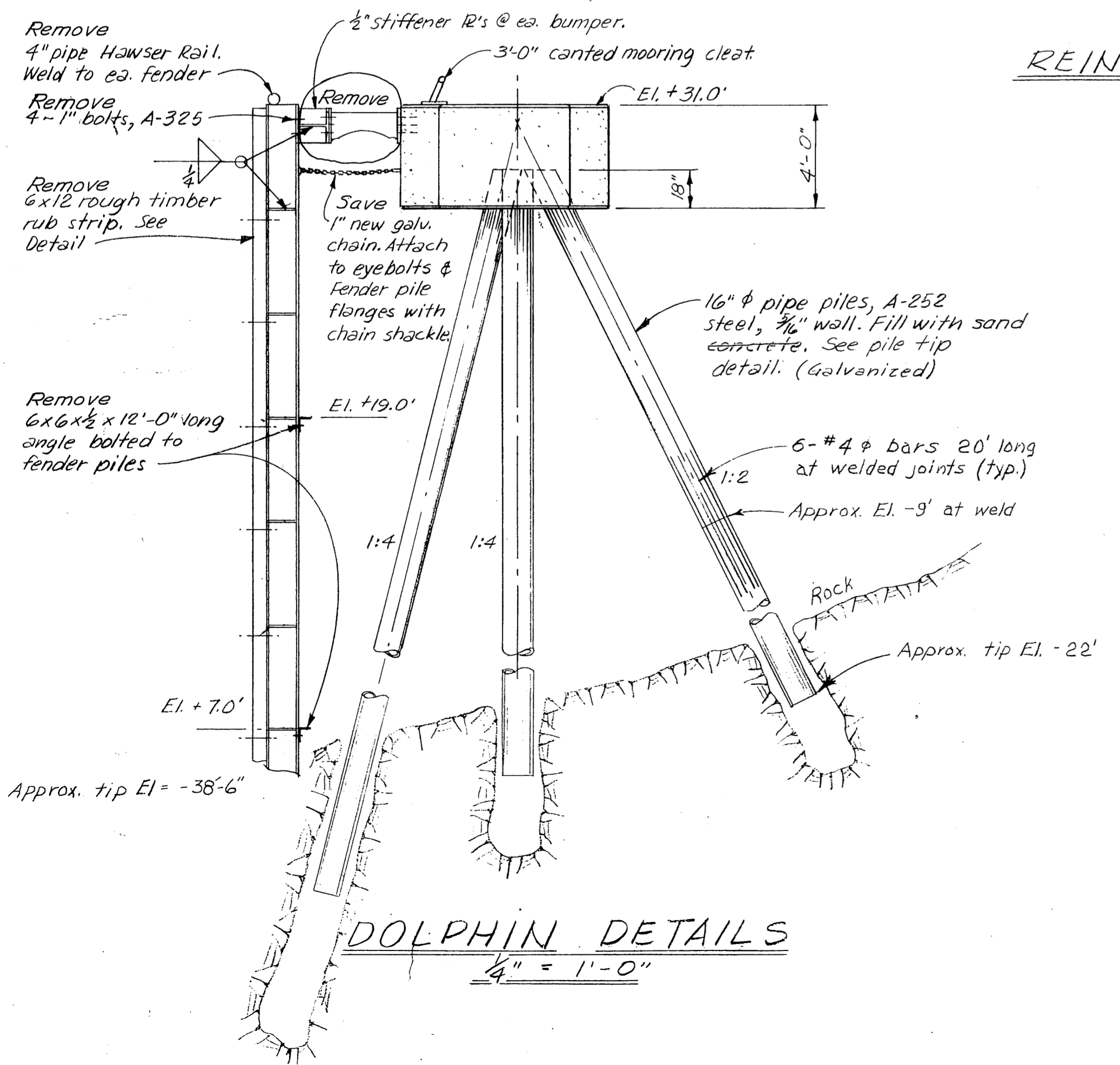
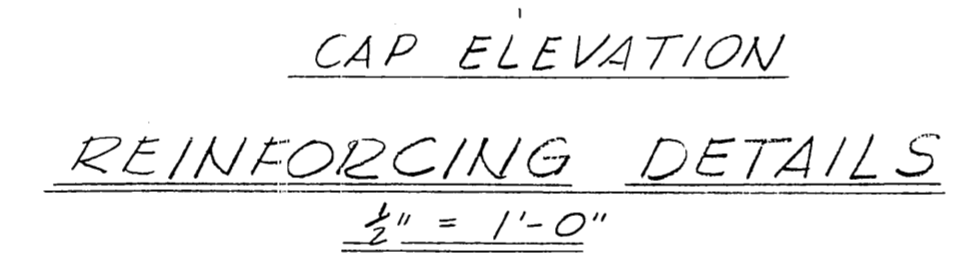
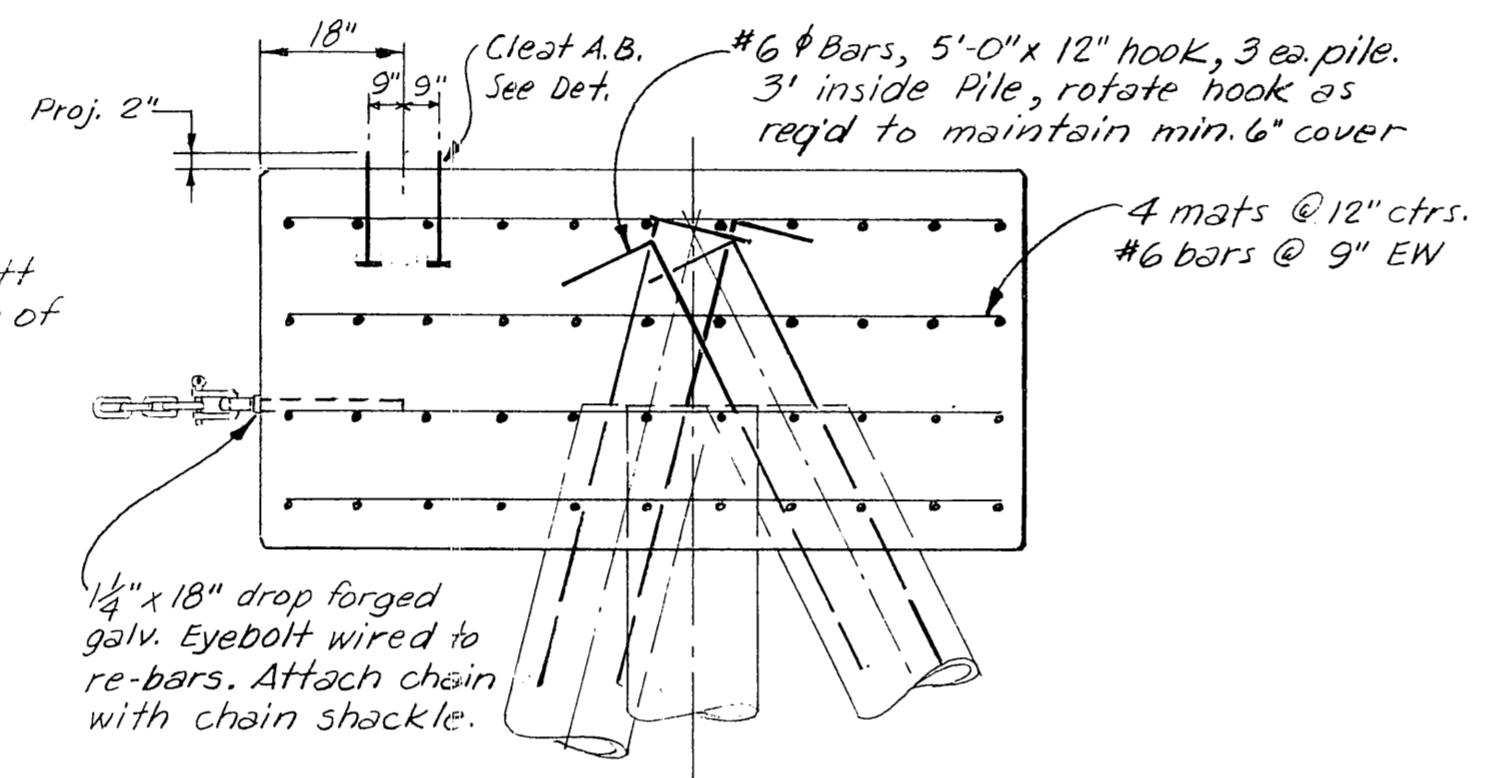
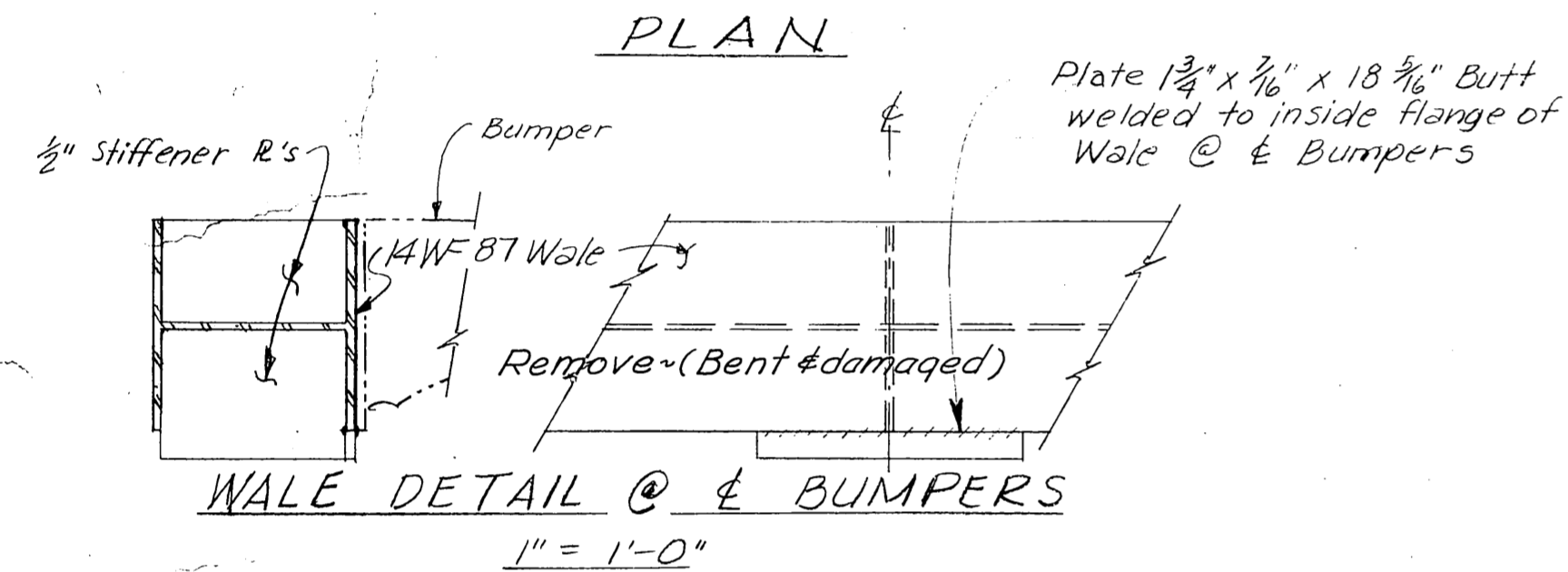
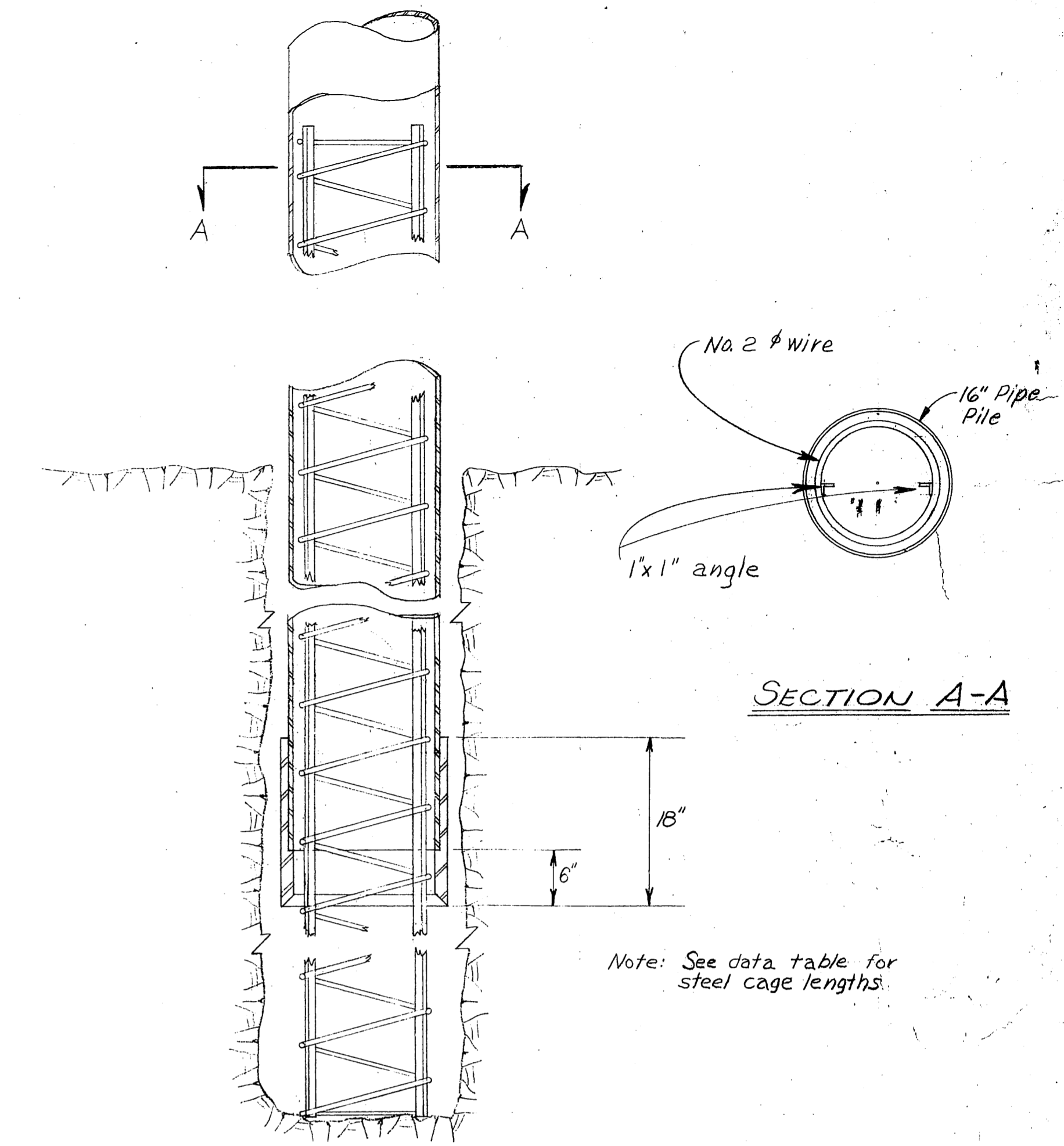
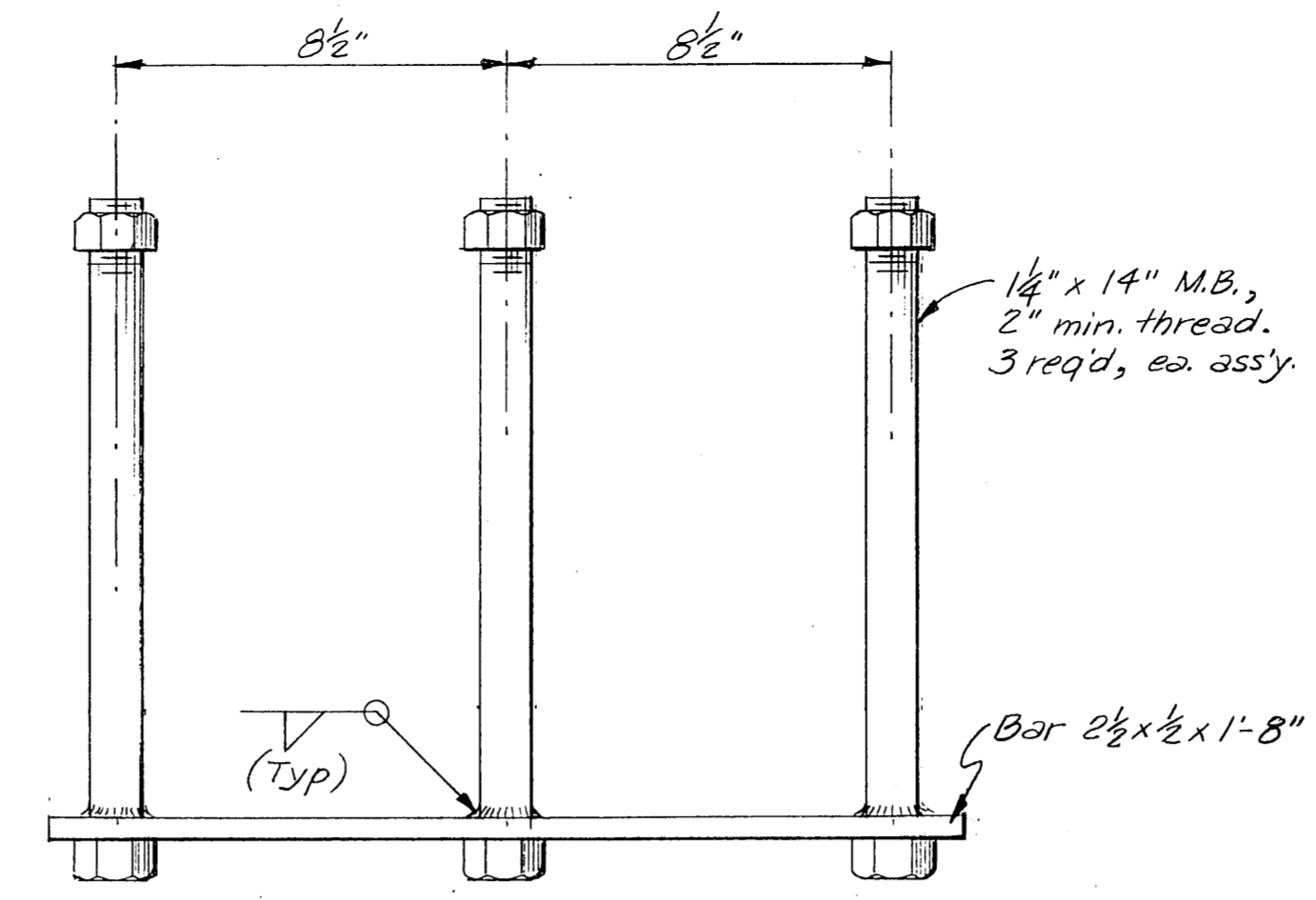
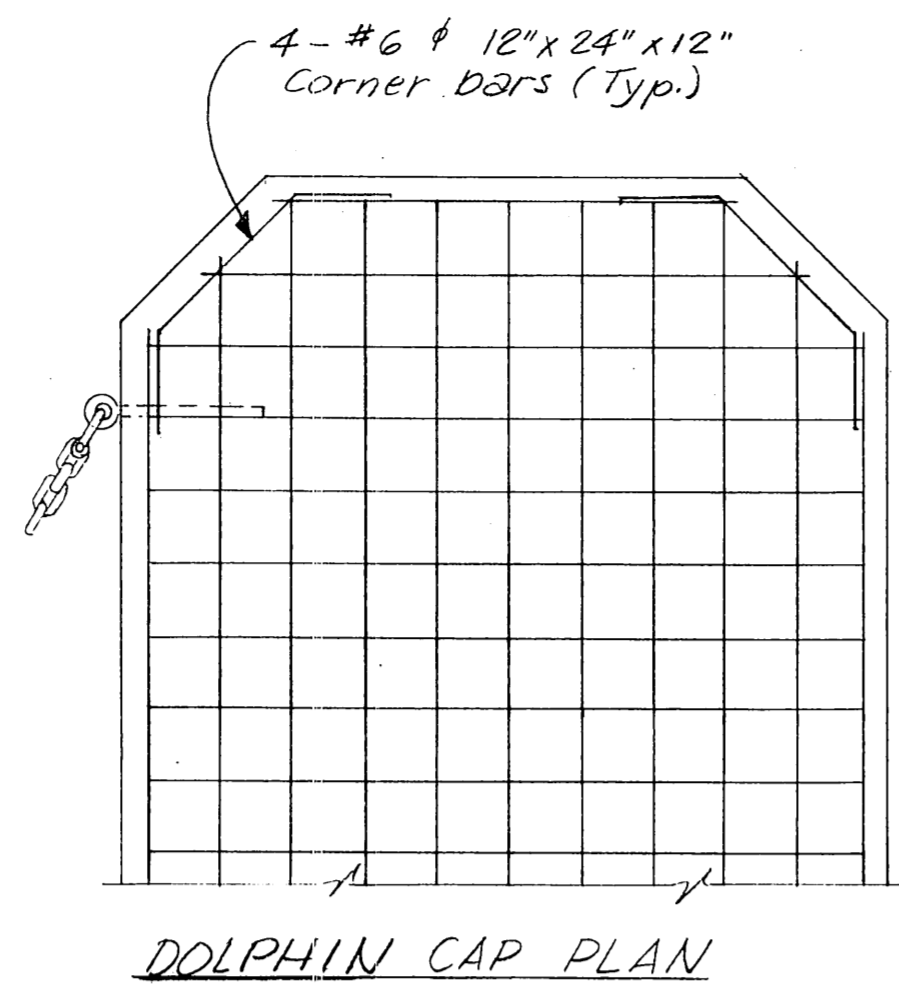
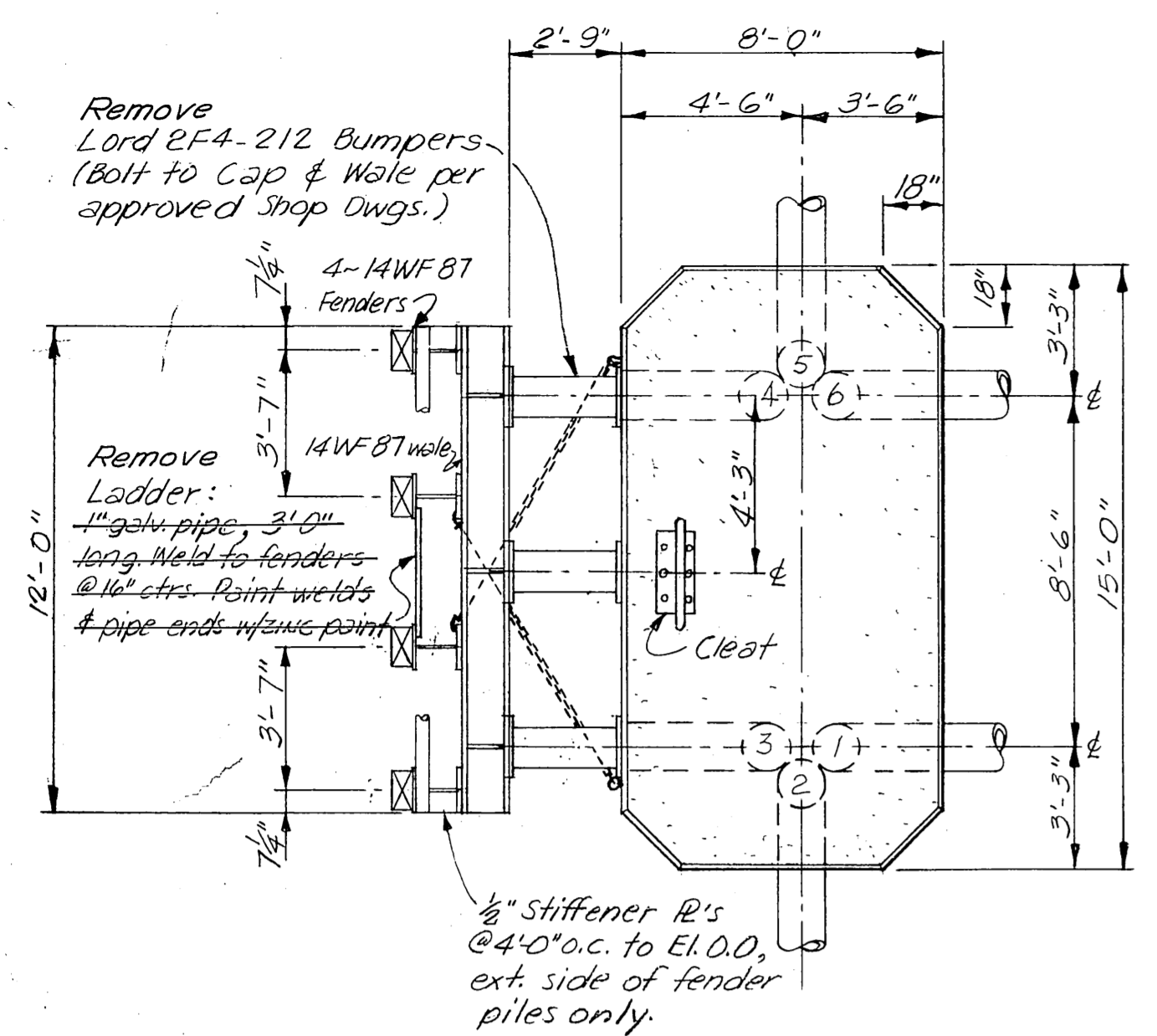


ROCKBOLT DETAIL  
1/2" = 1'-0"

90  
69  
154

**AS BUILT**

| NO.  | DATE     | REVISION                |
|--|----------|-------------------------|
| STATE OF ALASKA<br>DEPARTMENT OF PUBLIC WORKS<br>DIVISION OF WATER AND HARBORS |          |                         |
| <b>DOCK REPAIRS<br/>WRANGELL FERRY TERMINAL</b>                                |          |                         |
| SCALE  | As shown | APPROVED                |
| DATE   | 9-25-77  | Don Stoffer<br>DIRECTOR |
| PROJ. NO.  | 6-77131  | CHECKED BY              |
| SURVEYED BY  | DSM      | DRAWN BY                |
|  | WQ       | CHECKED BY              |
|  | DSM      |                         |



| Pile No. | Overburd. | Rock Penetration Pile | Rock Penetration Hole | Length of pile down to welded joint | Length of steel footing | Pile Length |
|----------|-----------|-----------------------|-----------------------|-------------------------------------|-------------------------|-------------|
| 1        | 36"       | 54"                   | 74"                   | 39'-8"                              | 12'                     | 57'-2"      |
| 2        | 35"       | 44"                   | 75"                   | 38'-0"                              | 12'                     | 61'-7"      |
| 3        | 25"       | 73"                   | 147"                  | 40'-6"                              | 18'                     | 69'-6"      |
| 4        | 59"       | 68"                   | 131"                  | 37'-5"                              | 18'                     | 69'-7"      |
| 5        | 45"       | 41"                   | 77"                   | 37'-0"                              | 12'                     | 59'-8"      |
| 6        | 72"       | 50"                   | 72"                   | 40'-8"                              | 12'                     | 57'-3"      |

NOTE: Not a construction drawing, for information only, to show existing parts to be removed prior to reconstruction.

**As Constructed**

STATE OF ALASKA  
DEPARTMENT OF PUBLIC WORKS  
DIVISION OF WATER AND HARBORS

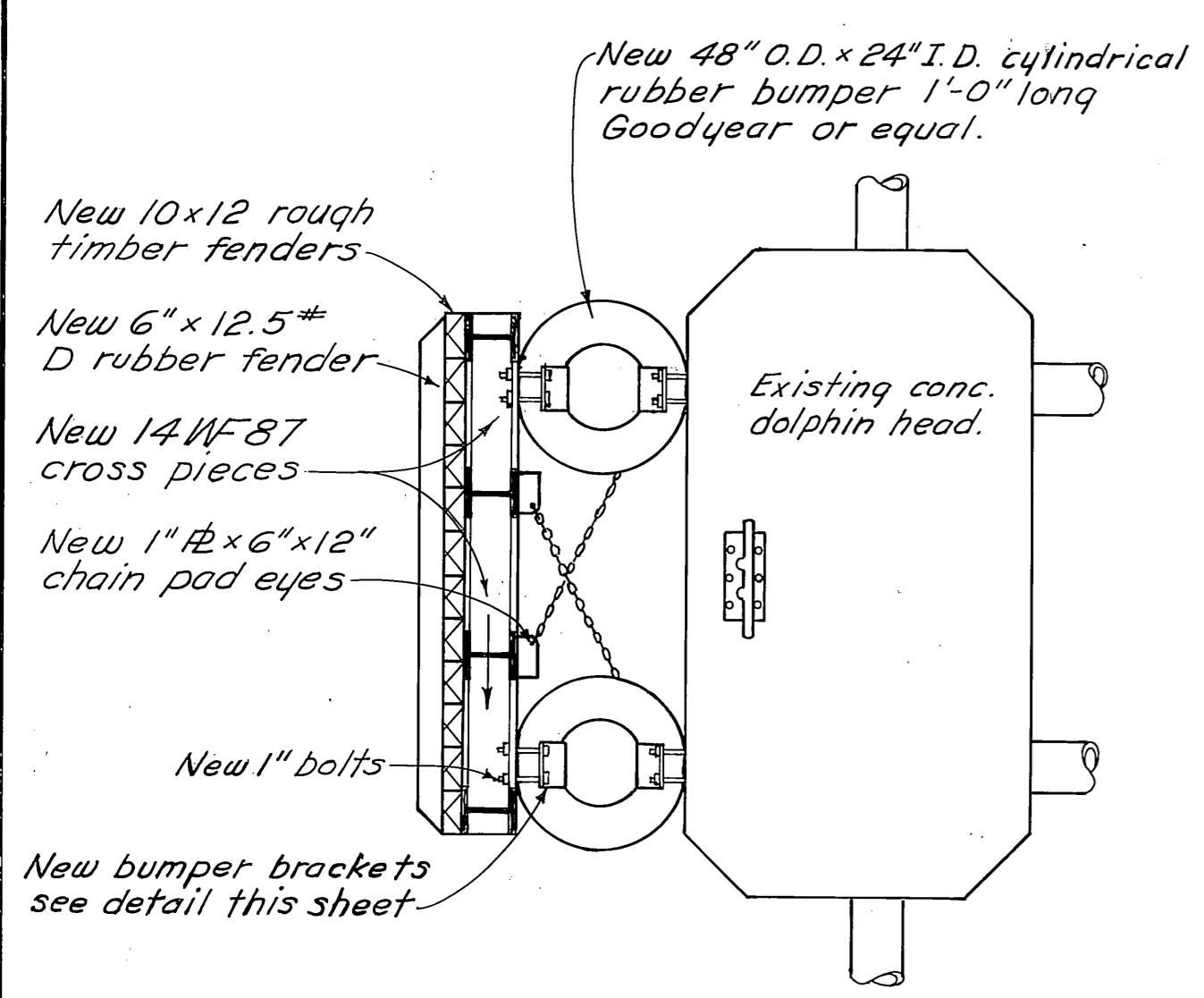
**BREASTING DOLPHIN  
WRANGELL FERRY TERMINAL**

SCALE As shown.  
DATE 2-25-70  
PROJ. NO. 6-77131

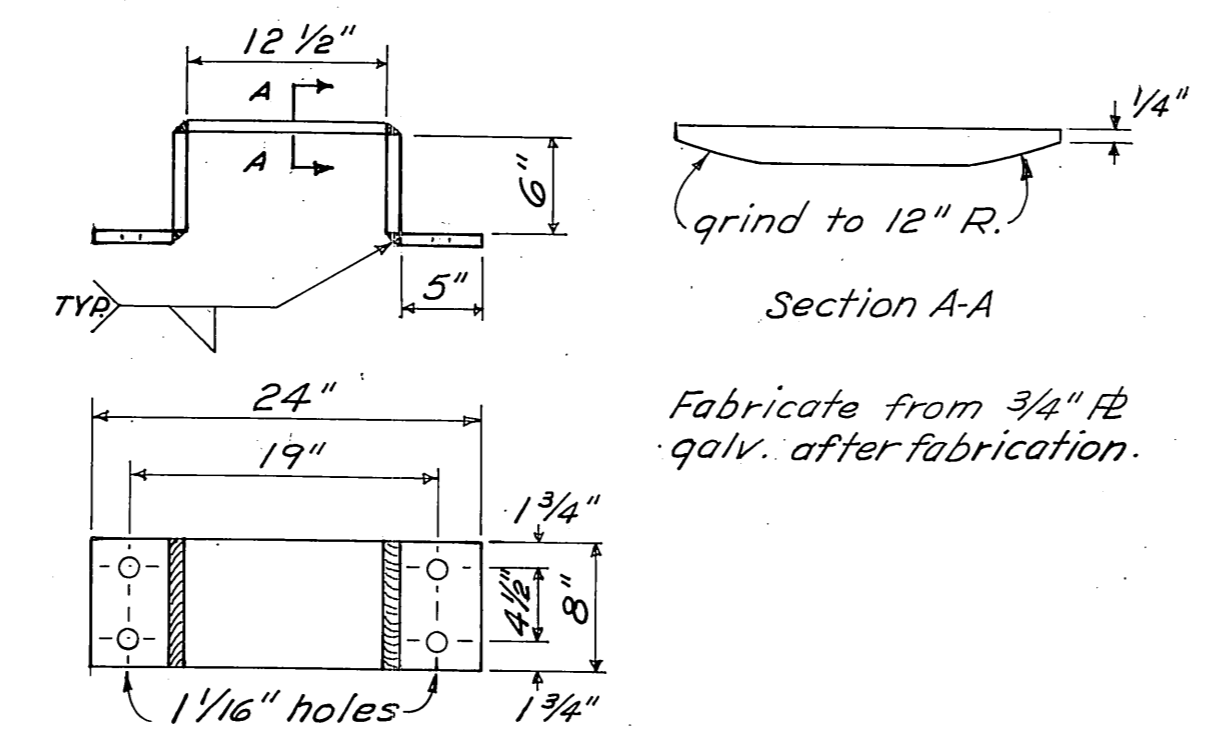
APPROVED *Don Stoffer*

DRAWN BY *JEI* CHECKED BY

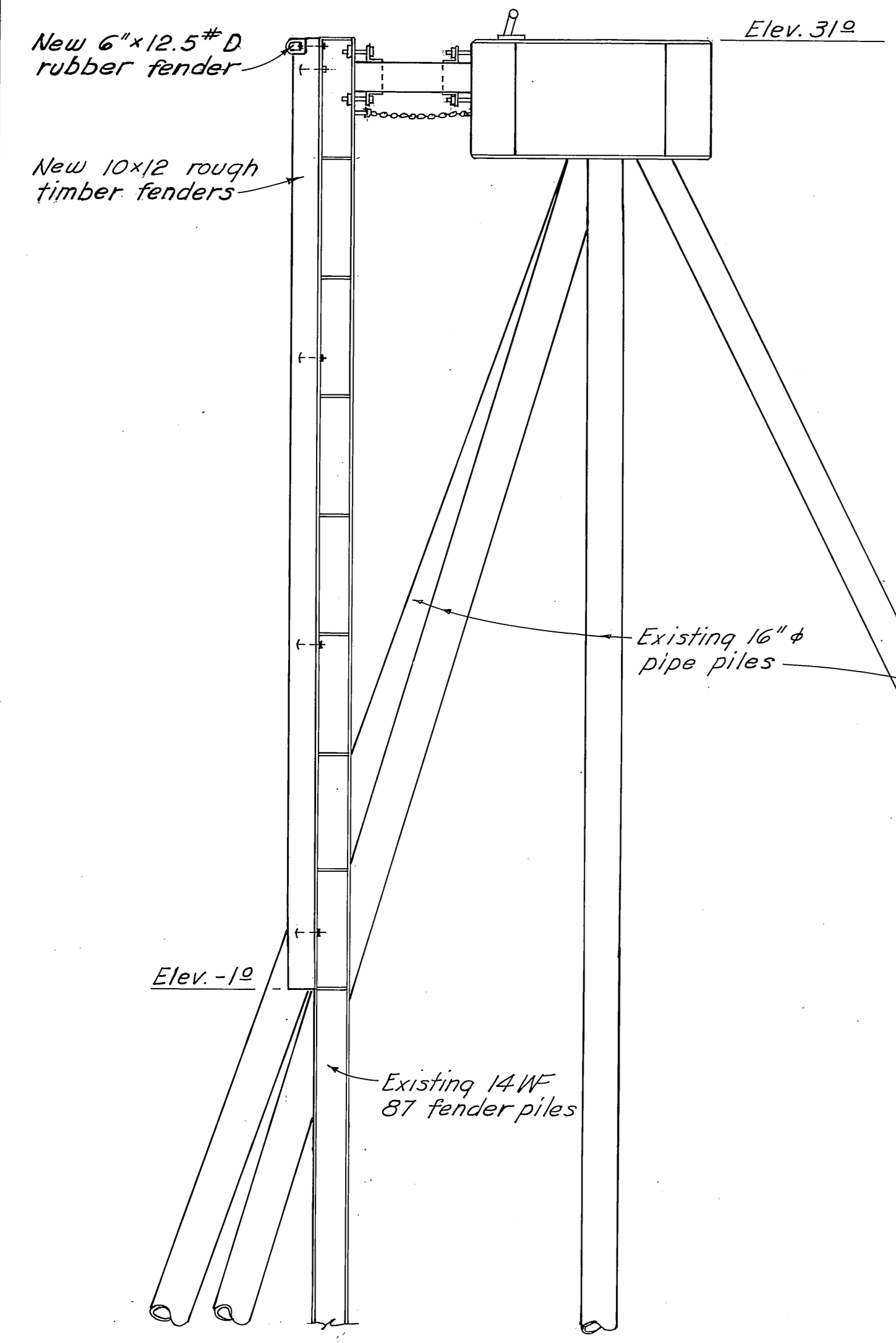
SHEET 2 OF 4



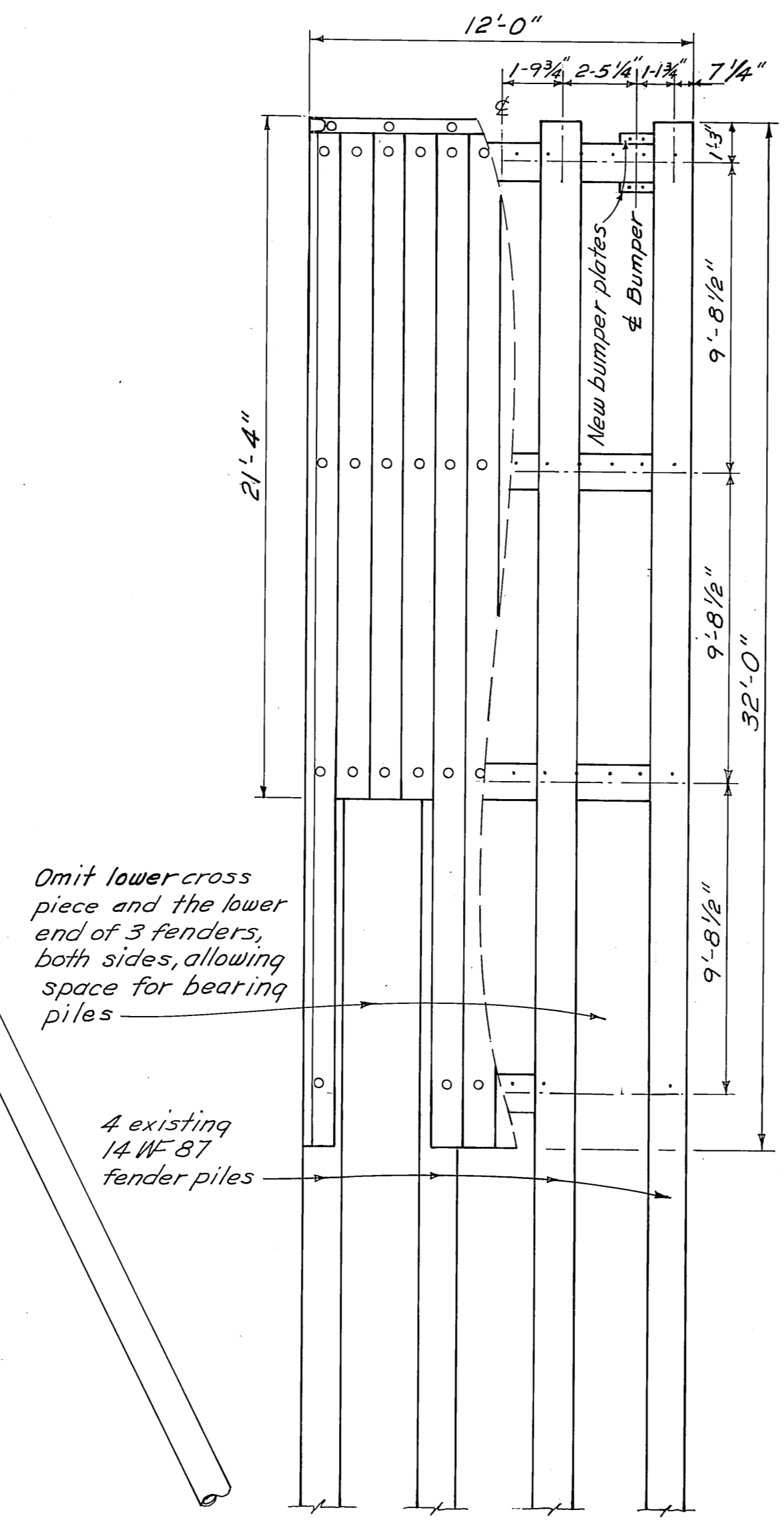
PLAN  
1/4" = 1'-0"



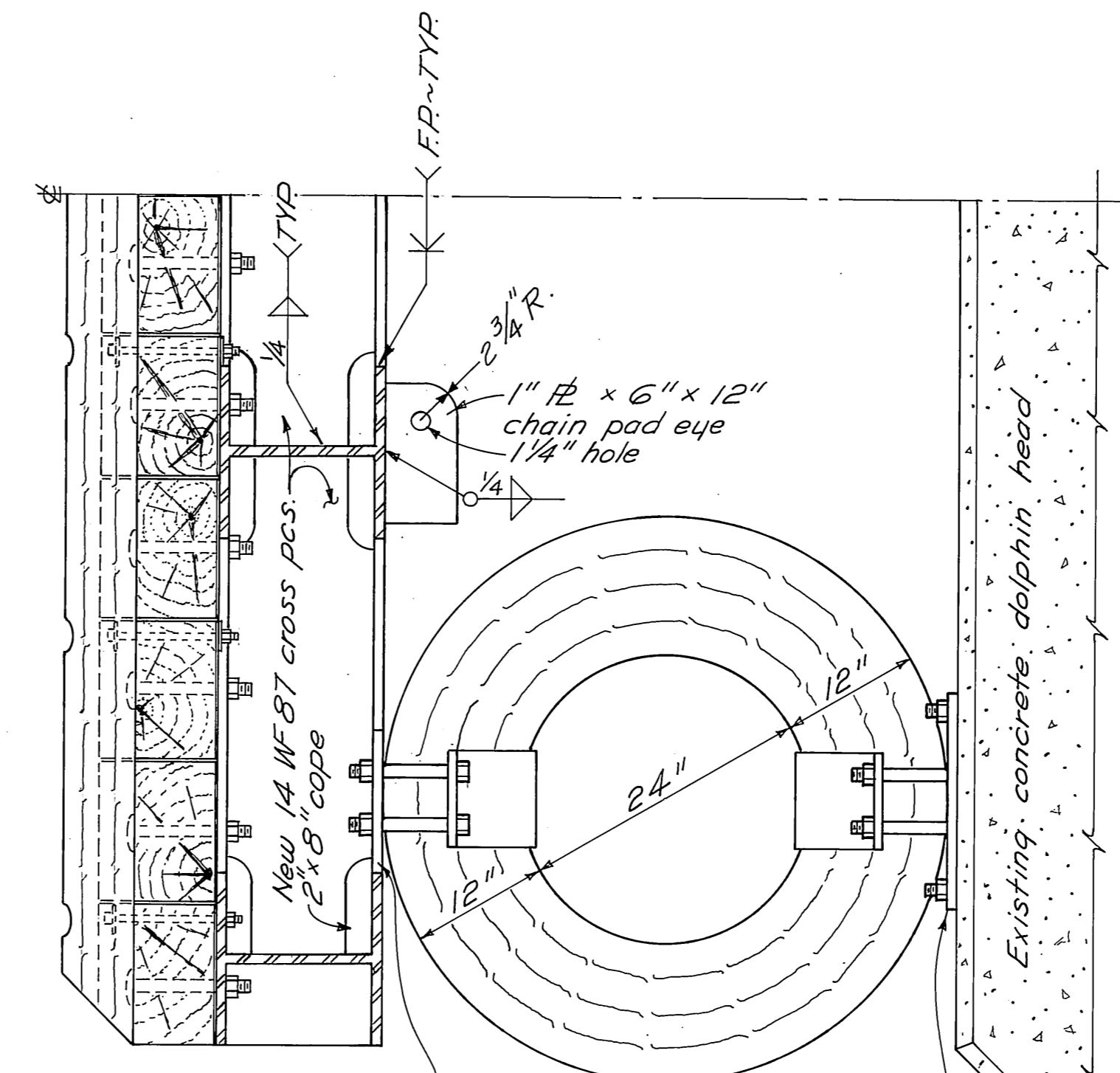
BUMPER BRACKET  
DETAILS  
1" = 1'-0"



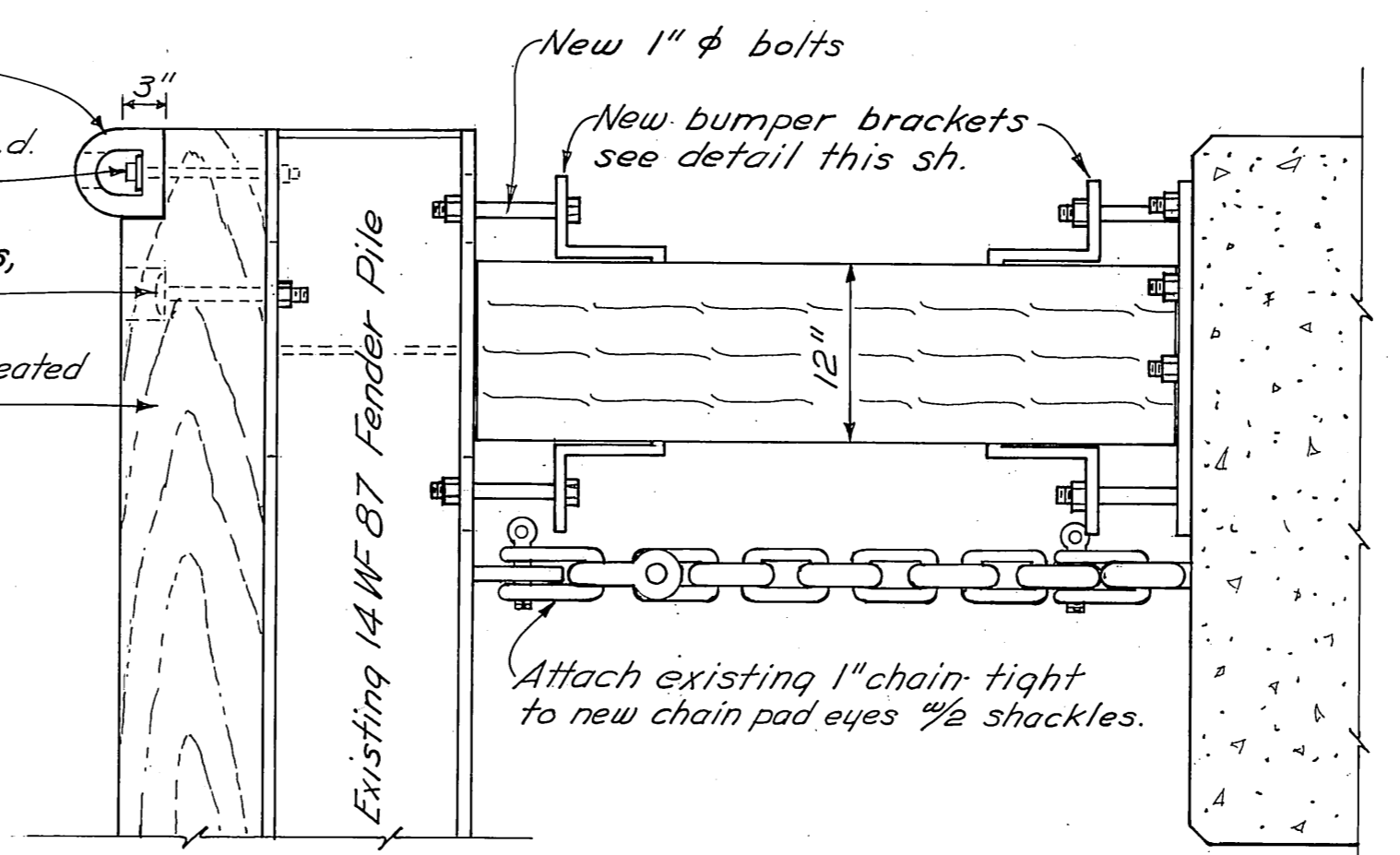
ELEVATION  
1/4" = 1'-0"



FENDER ASSEMBLY  
1/4" = 1'-0"



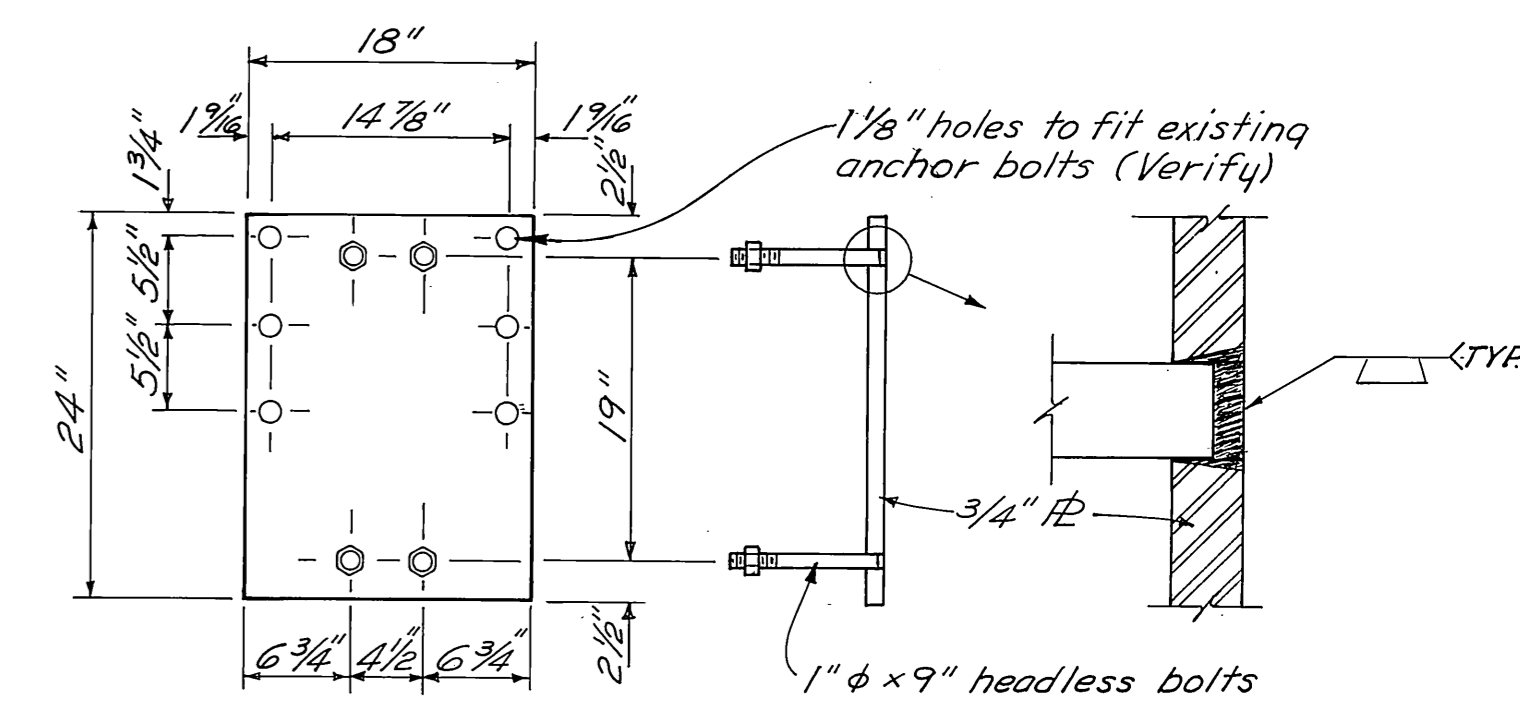
PLAN  
1" = 1'-0"



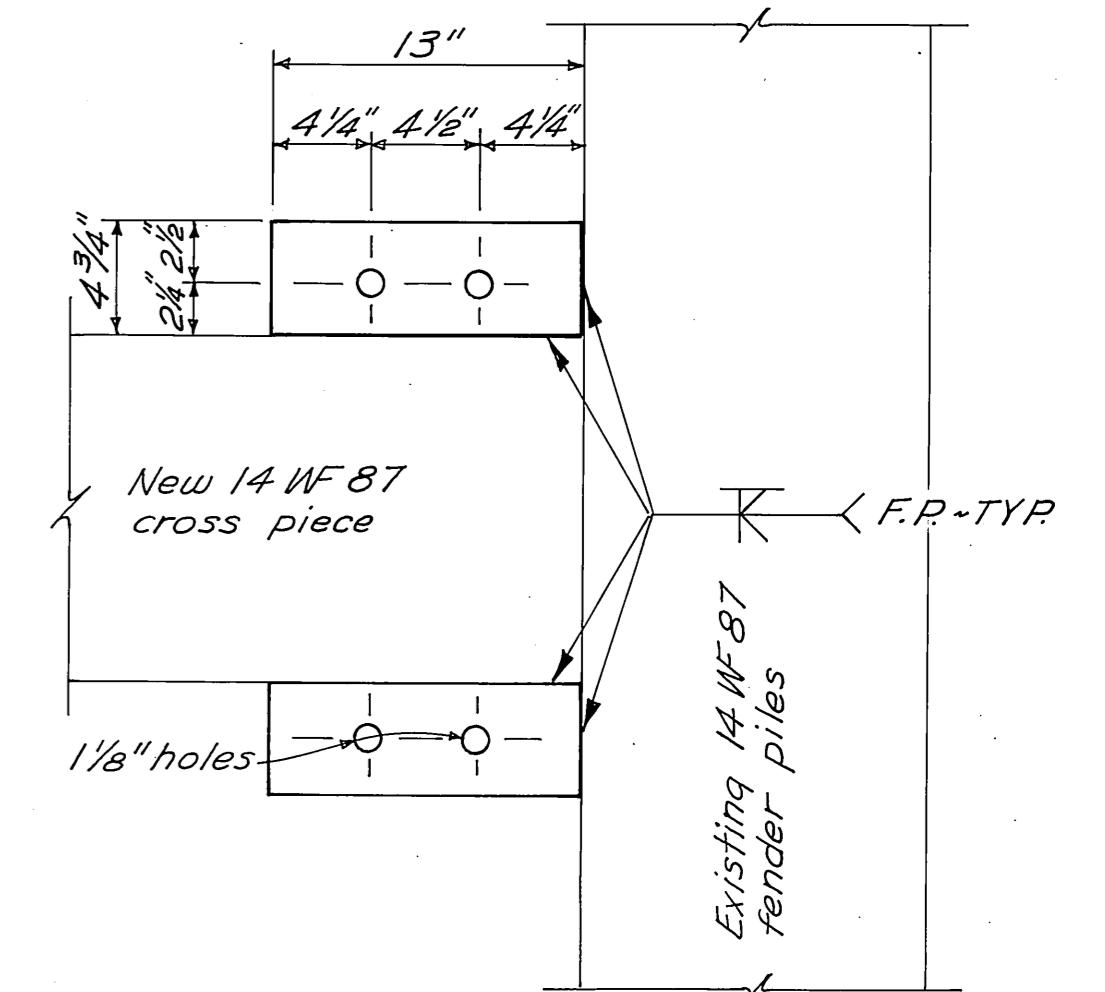
ELEVATION  
1" = 1'-0"

GENERAL DETAILS

NOTE: See attached sketches showing wale fastened to concrete dolphin head for rubber bumper connections



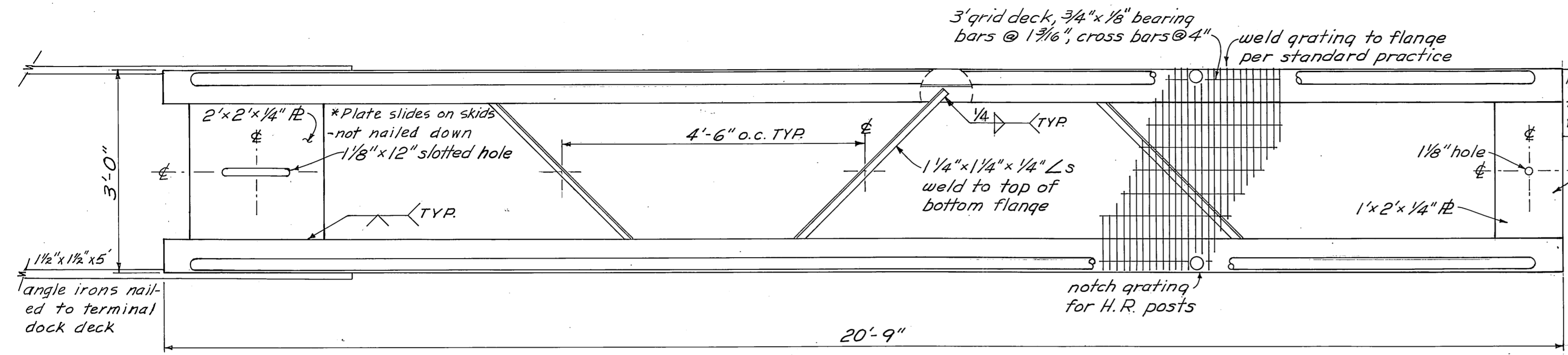
ADAPTER PLATES  
DETAILS  
1" = 1'-0"



BUMPER PLATES  
DETAILS  
1 1/2" = 1'-0"

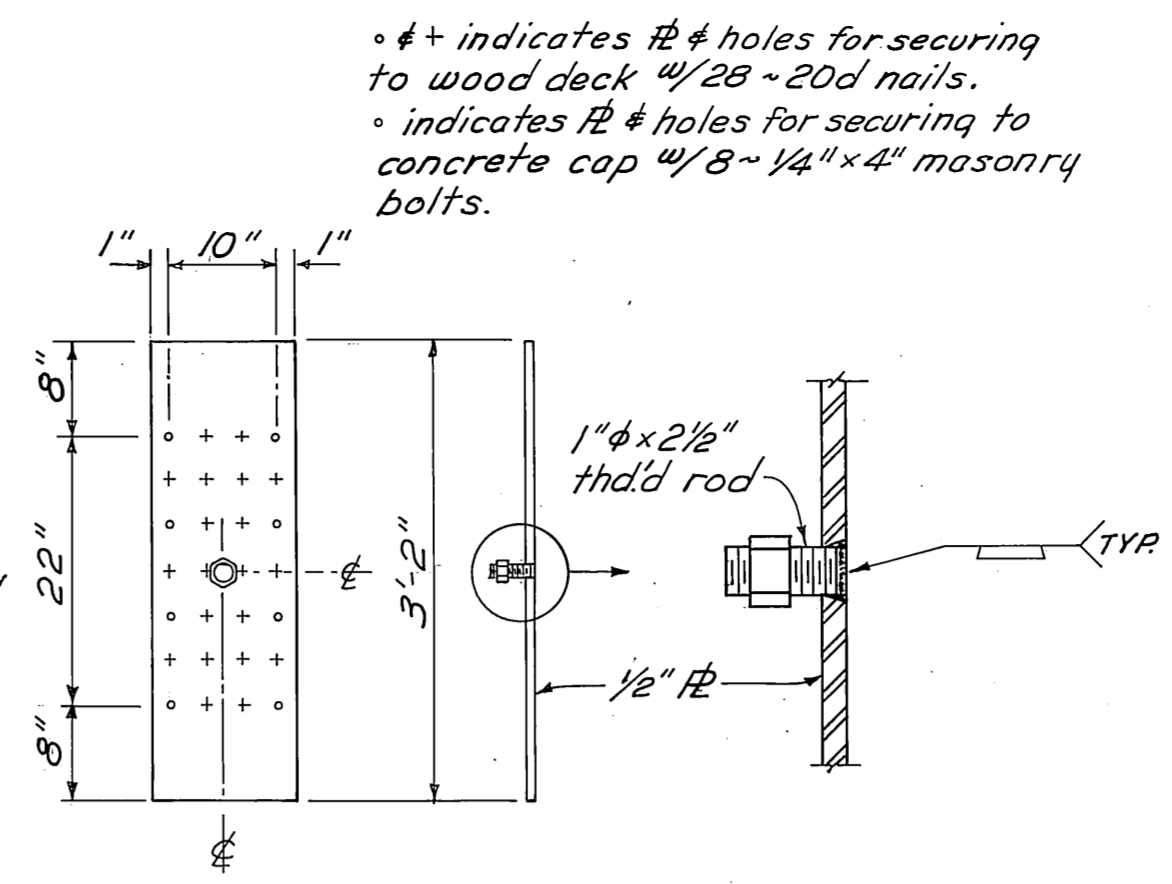
NOTES  
There is a slight spread of the existing outside fender piles, therefore, except for the top set, the outside cross pieces will have to be field cut to fit. All steel shall be A-36 or A-252. All steel shall be hot dipped galv. after fabrication in accordance with ASTM A-123, A-153 as appropriate. All field welds and damaged galvanized surfaces shall be coated with "Galvalloy" or "Galvicon."

|  |                            |                    |
|--|----------------------------|--------------------|
| DO NOT SCALE THIS DRAWING - USE DIMENSIONS                                     |                            |                    |
| STATE OF ALASKA<br>DEPARTMENT OF PUBLIC WORKS<br>DIVISION OF WATER AND HARBORS |                            |                    |
| <b>DOLPHIN RECONSTRUCTION</b><br>Wrangell Ferry Terminal                       |                            |                    |
| SCALE <i>As Shown</i>  | SURVEYED _____             | APPROVED _____     |
| DESIGNED _____   | DRAWN <i>FB</i>            | <i>Don Statter</i> |
| CHECKED _____  | DATE <i>9-20-76</i>        | DIRECTOR           |
| PROJECT NUMBER <i>6-77131</i>  | SHEET <i>3</i> OF <i>4</i> |                    |

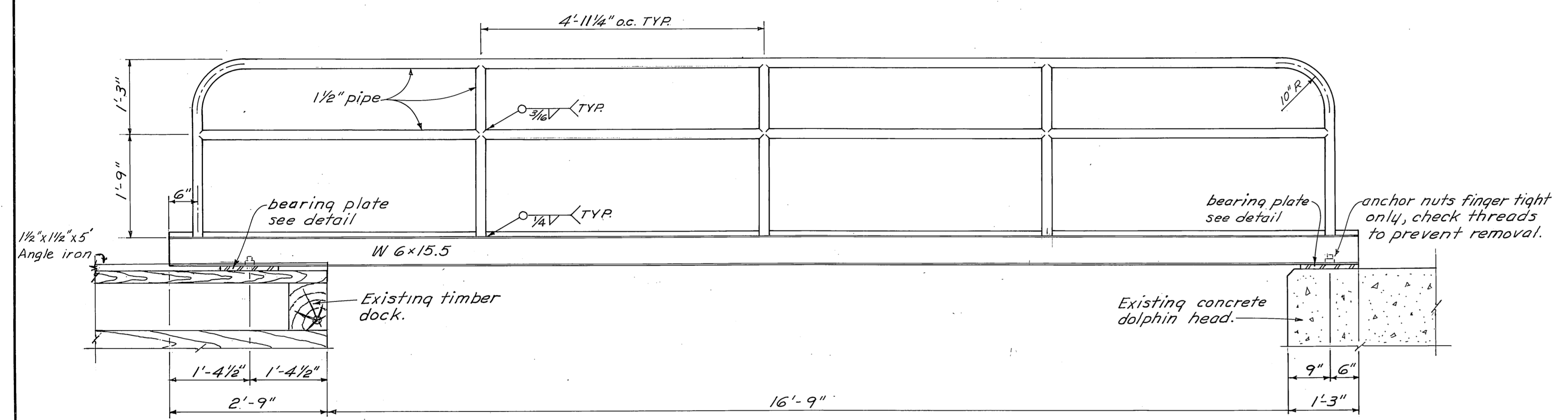


PLAN

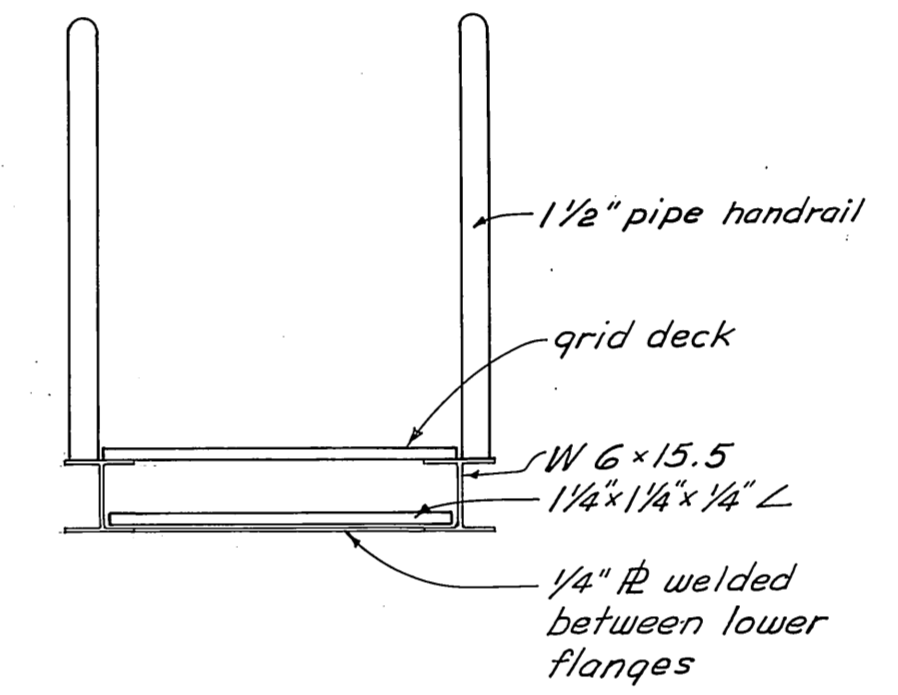
\* Terminal dock moves so much when ferry pulls on it that the original method of connection failed - pulled all masonry bolts out of plate on concrete dolphin head



BEARING PLATE DETAILS



ELEVATION



SECTION

**NOTES**

All catwalk steel shall be A-36 or A-252 as appropriate. Entire catwalk shall be hot dipped galvanized after fabrication and in accordance with ASTM A-123, A-384 A-385 & A-386.

All other steel including fasteners shall be hot dipped galvanized in accordance with ASTM A-153.

|  |                 |                    |
|--|-----------------|--------------------|
| DO NOT SCALE THIS DRAWING - USE DIMENSIONS                                     |                 |                    |
| STATE OF ALASKA<br>DEPARTMENT OF PUBLIC WORKS<br>DIVISION OF WATER AND HARBORS |                 |                    |
| <b>CATWALK DETAILS</b><br>Wrangell Ferry Terminal                              |                 |                    |
| SCALE 3/4" = 1'-0"   | SURVEYED        | APPROVED           |
| DESIGNED   | DRAWN <i>DS</i> | <i>Don Statter</i> |
| CHECKED  | DATE 9-20-76    | DIRECTOR           |
| PROJECT NUMBER 6-77131   | SHEET 4 OF 4    |                    |