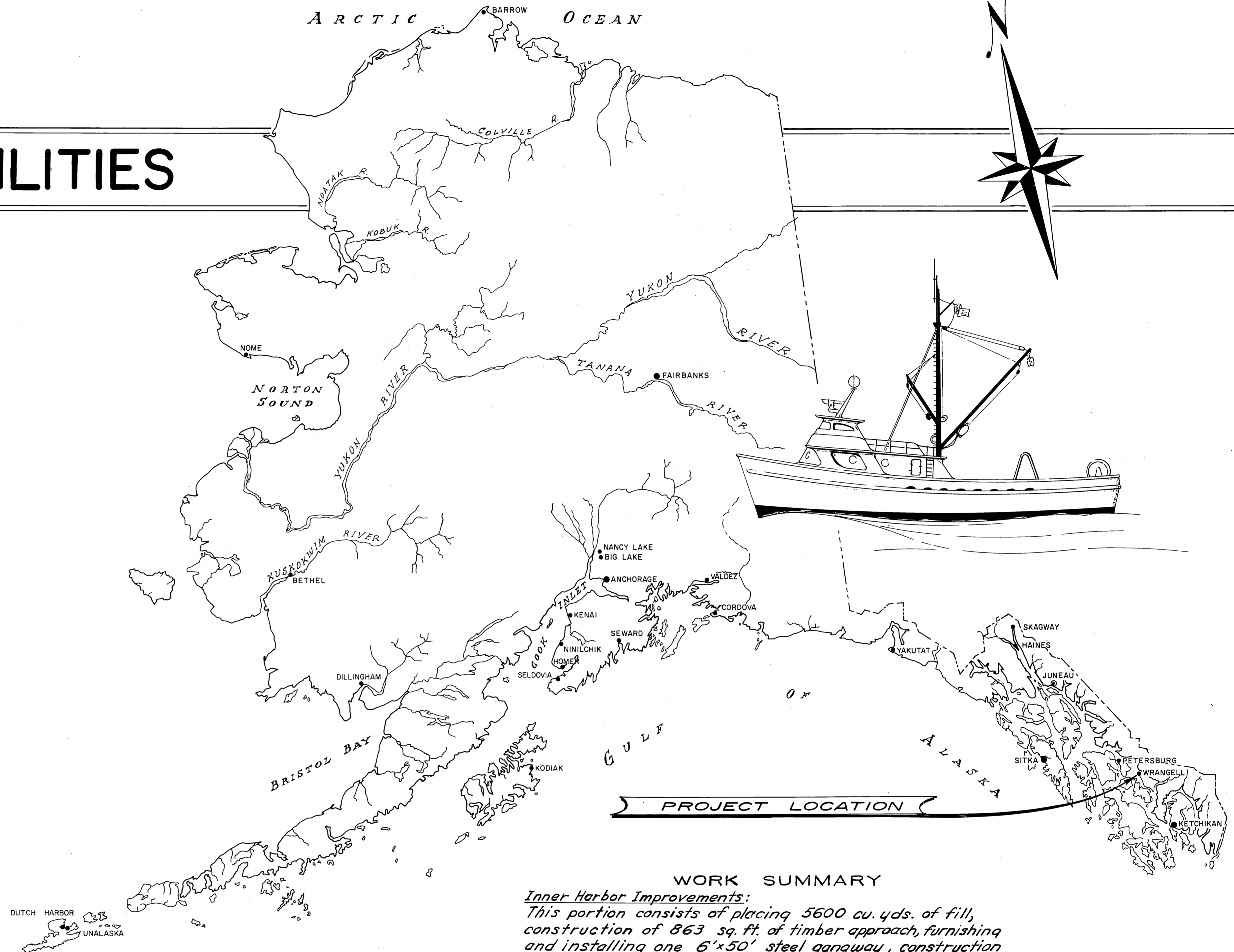


WRANGELL BOAT HARBOR FACILITIES

PROJECT NO. 3-73131



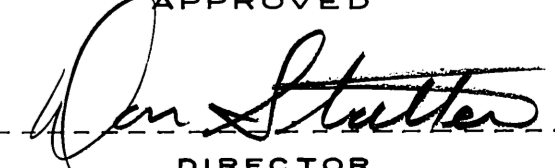
NOTE -
 Alignment and dimension of parking area modified
 Piling in gangway float changed due to rock in original location

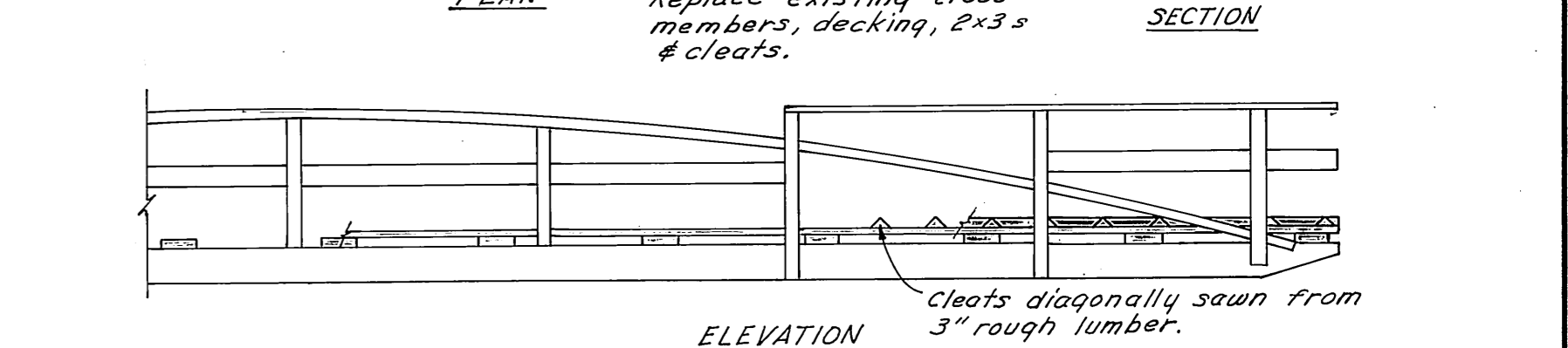
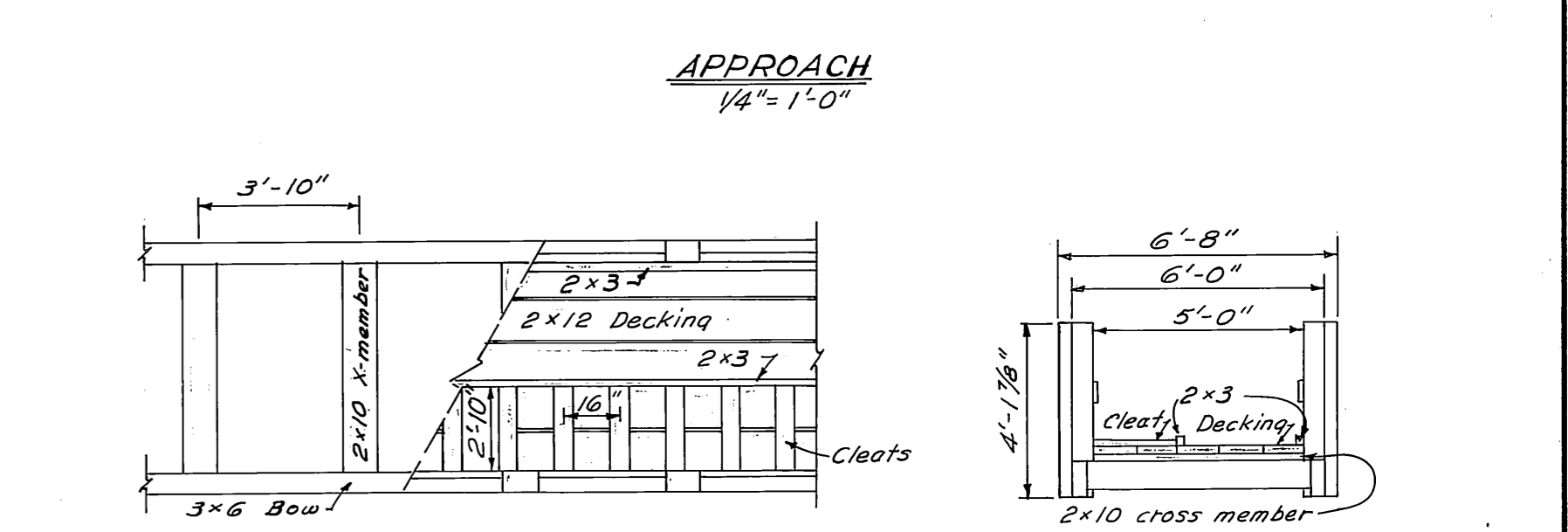
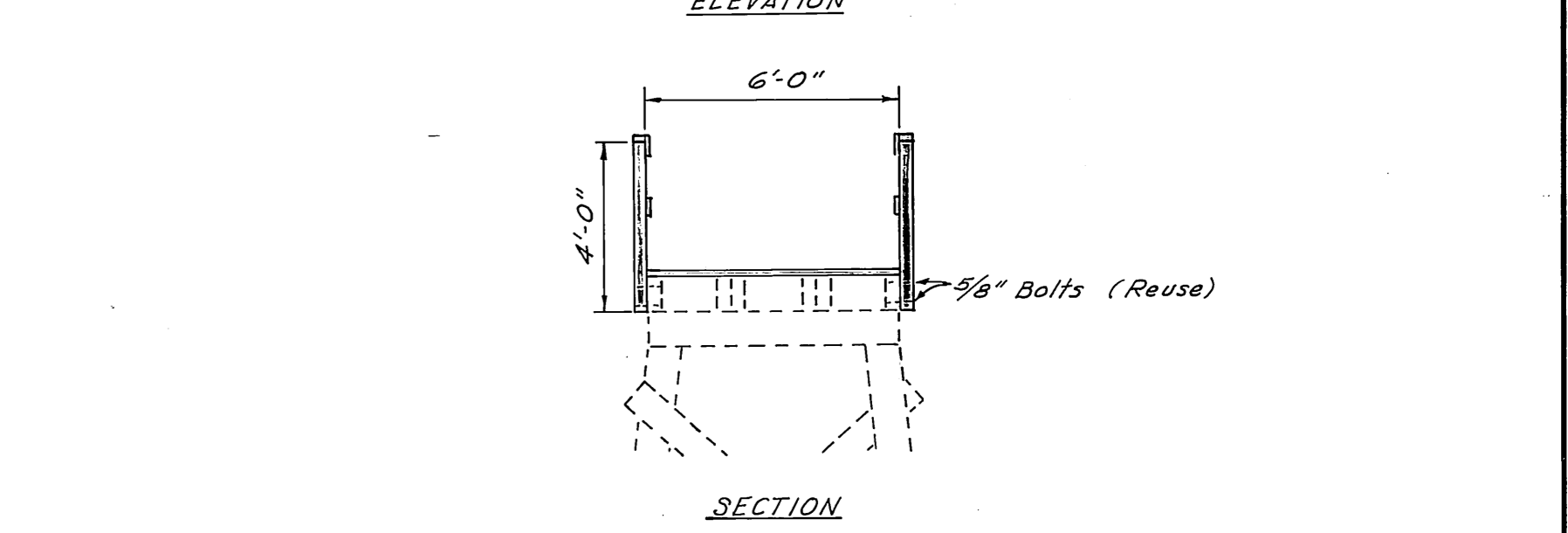
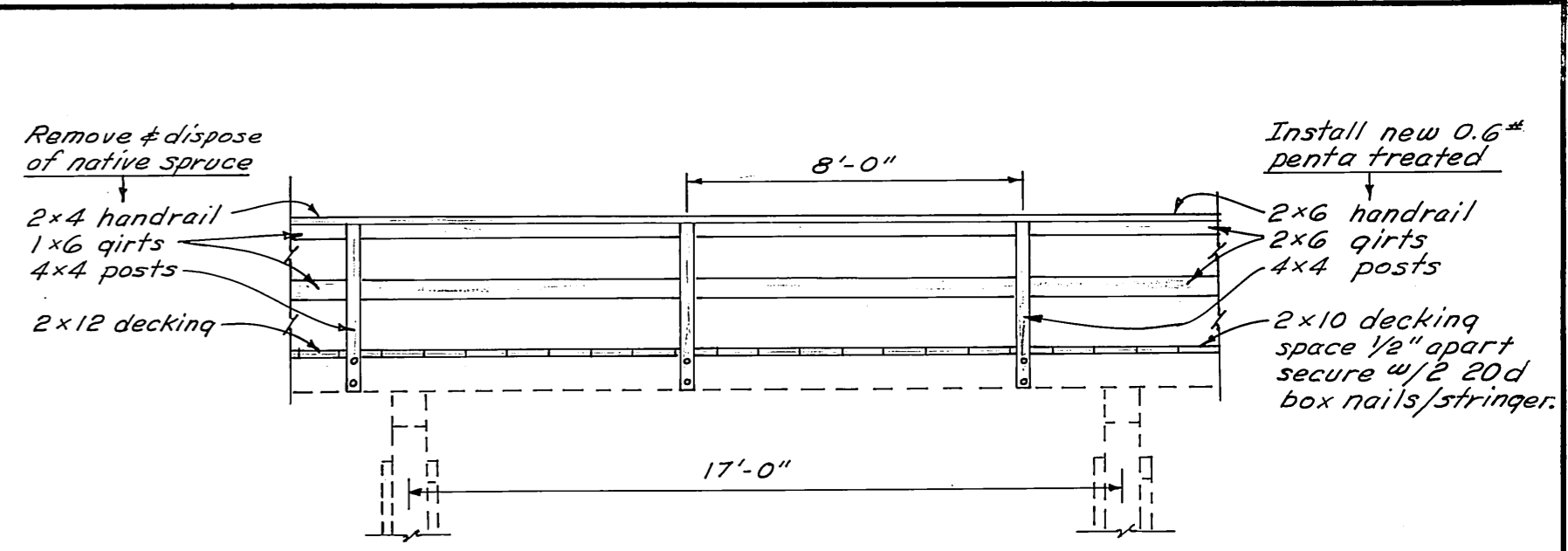
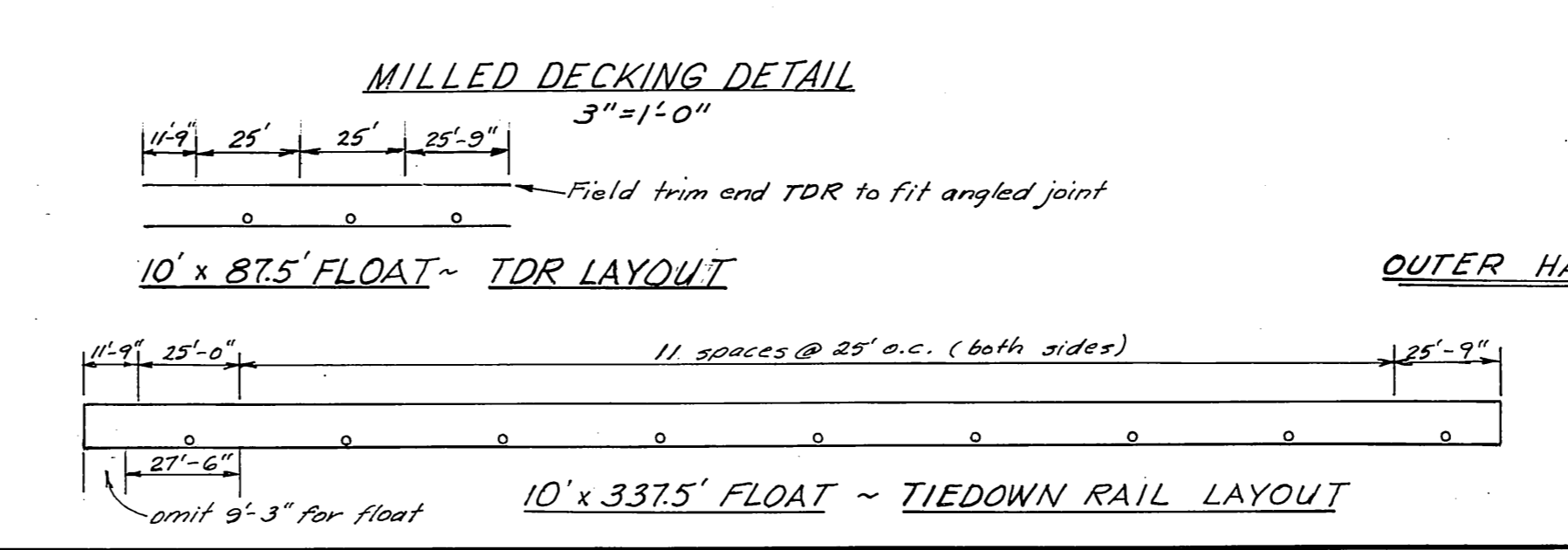
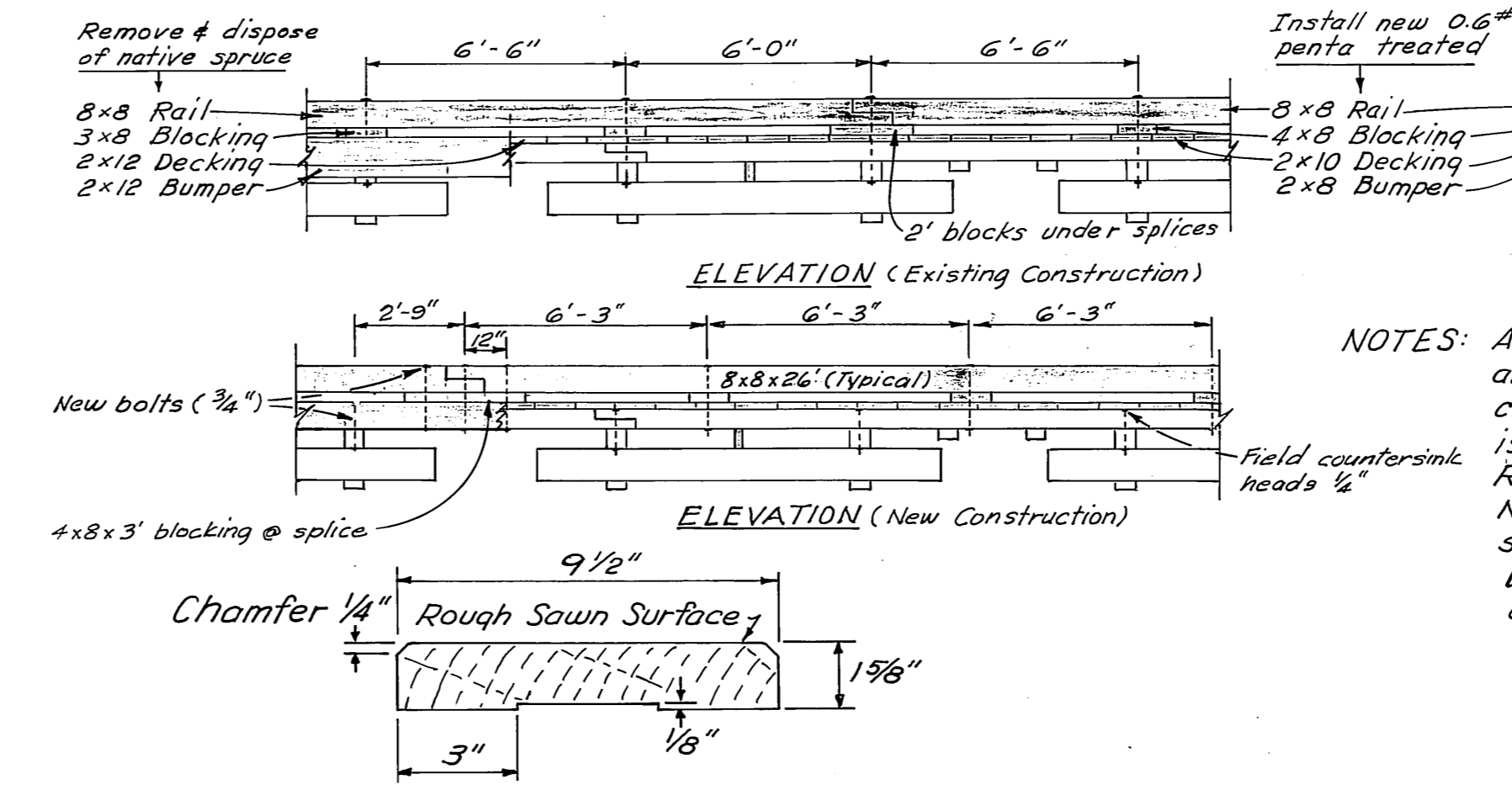
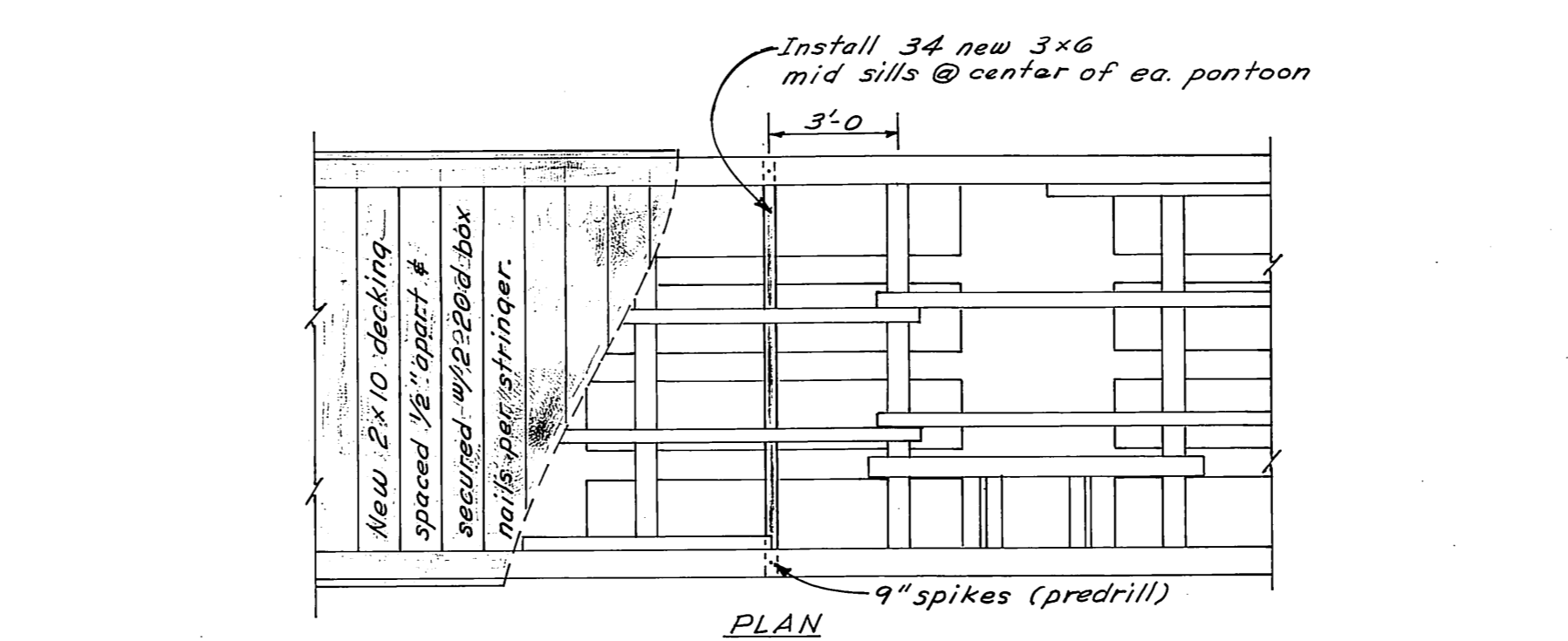
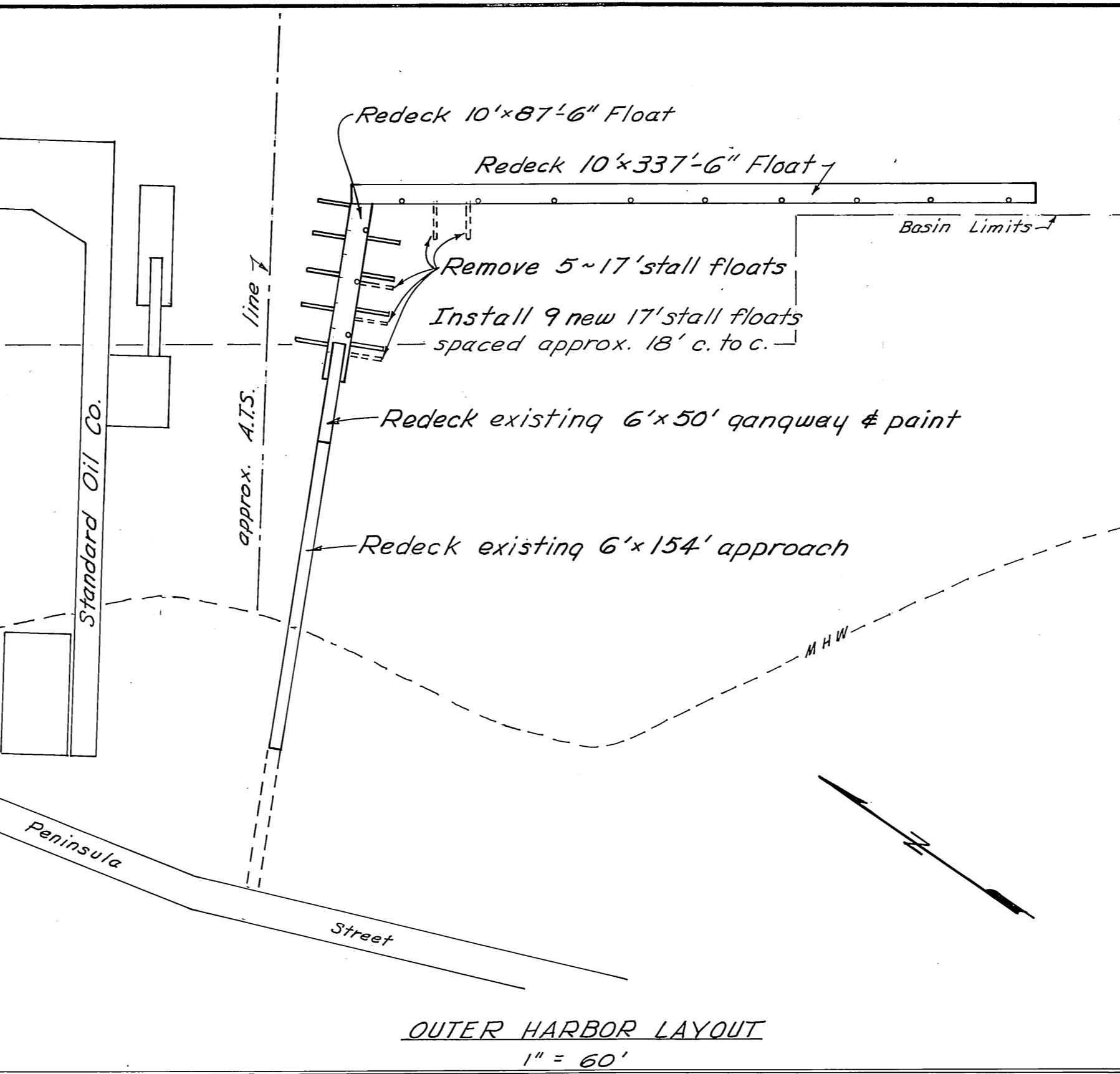
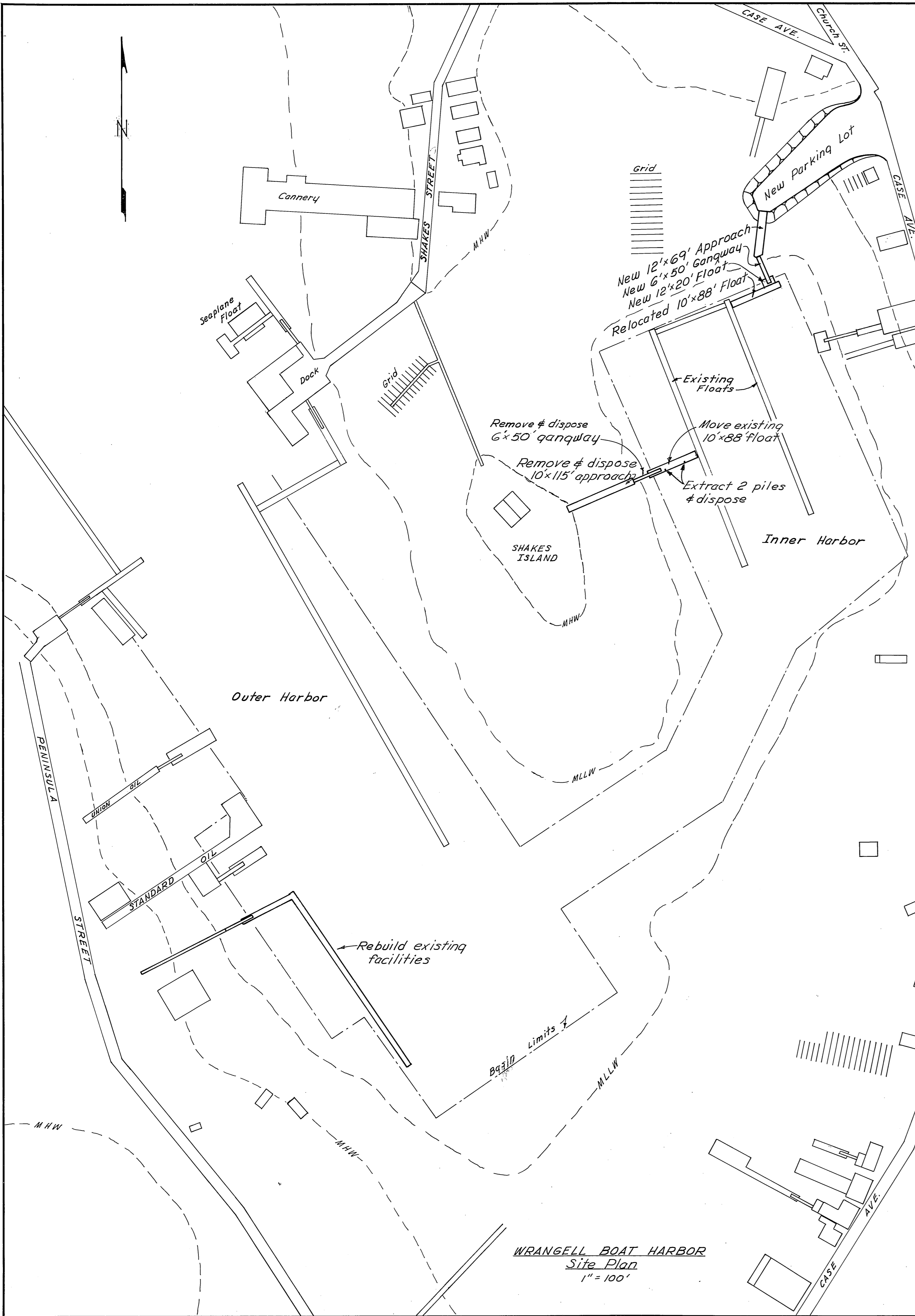
As Constructed

WORK SUMMARY
Inner Harbor Improvements:
 This portion consists of placing 5600 cu. yds. of fill, construction of 863 sq. ft. of timber approach, furnishing and installing one 6'x50' steel ganqway, construction and installation of 240 sq. ft. of float, furnishing and driving of 112 lin. ft. of timber float piles, extraction and disposal of 2 timber piles, moving a 10'x88' float, and the removal and disposal of a 10'x115' timber approach and a 6'x50' ganqway.
Outer Harbor Improvements:
 This portion consists of the superstructure replacement of 924 sq. ft. of timber approach, a 6'x50' timber ganqway, 4,250 sq. ft. of timber mooring float, removal and disposal of 5 17'stall floats and the construction and installation of 9 17'stall floats.

STATE OF ALASKA DEPARTMENT OF PUBLIC WORKS
DIVISION OF WATER & HARBORS

INDEX TO SHEETS	
1	TITLE ~ LOCATION
2	SITE PLAN ~ OUTER HARBOR LAYOUT & DETAILS
3	INNER HARBOR APPROACH LAYOUT & FILL DETAILS
4	12' TIMBER APPROACH DETAILS
5	GANGWAY FLOAT, HINGE CONNECTION & 17'STALL FLOAT DETAILS
6	STEEL GANGWAY DETAILS

APPROVED

 DIRECTOR
 DATE 6/13/73
 SHEET 1 OF 6



NOTES: All nails to be pulled from stringers and all nail holes to be filled w/ hot creosote oil before the new decking is installed. Replacement work shown shaded. New bolts req'd for ext. stringer to sills & tiedown rail to ext. stringers. Dimensions given for TDR's are c.t.c. of dap joints or to butt ends.

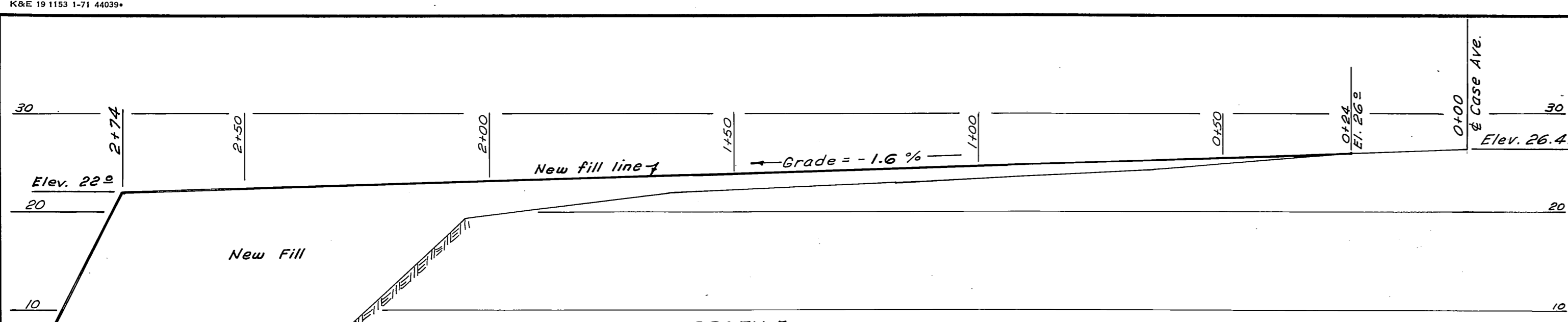
NEW MATERIALS		
ITEM	DRESSING	TREATMENT
2x6 Handrail	S4S	W.R. Penta.
2x6 Girts	"	"
4x4 Posts	"	0.6 Penta
2x10 Decking	Milled	"
2x10 Cross Member	Rough	8# Creo.
2x12 Decking	SIS2E	0.6 Penta.
3x3 Cleats	Rough	"
2x3 Runners	S4S	"
8x8 Rail	"	"
4x8 Blocking	"	"
2x8 Bumper	"	"
3x6 Mid Sills	"	8# Creo.

DO NOT SCALE THIS DRAWING - USE DIMENSIONS

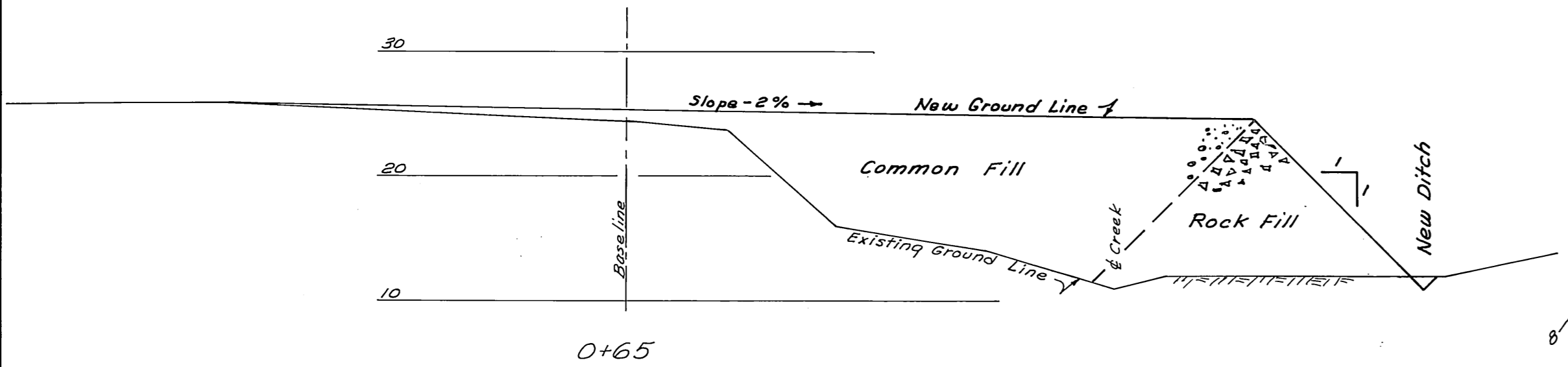
STATE OF ALASKA
DEPARTMENT OF PUBLIC WORKS
DIVISION OF WATER AND HARBORS

WRANGELL
SITE PLAN
OUTER HARBOR LAYOUT & DETAILS

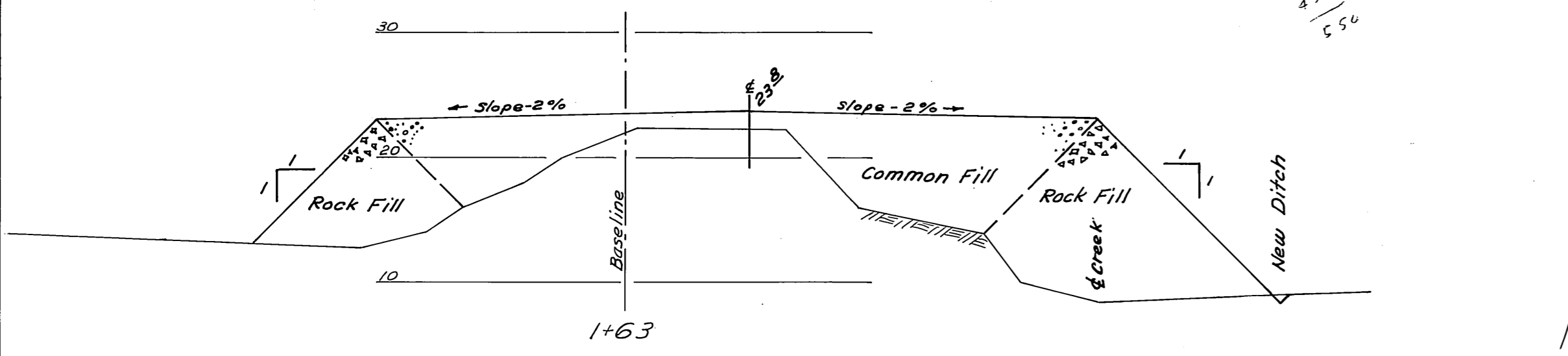
SCALE AS NOTED	SURVEYED D.S.M.	APPROVED
DESIGNED	DRAWN	Don Statter
CHECKED D.C.W.	DATE 5-73	DIRECTOR
PROJECT NUMBER 3-73131	SHEET 2 OF 6	



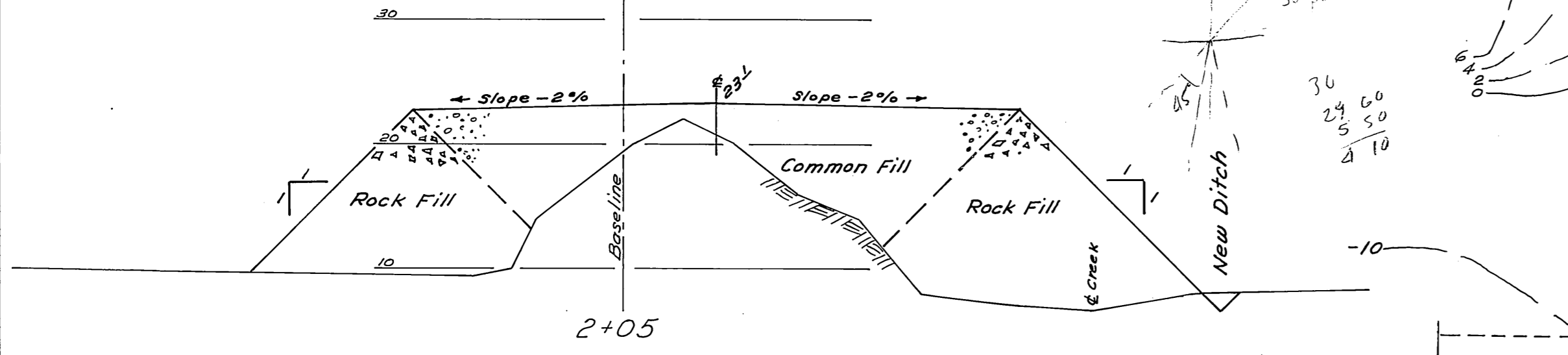
PROFILE
Scale Horz. 1"=20'
Vert. 1"=10'



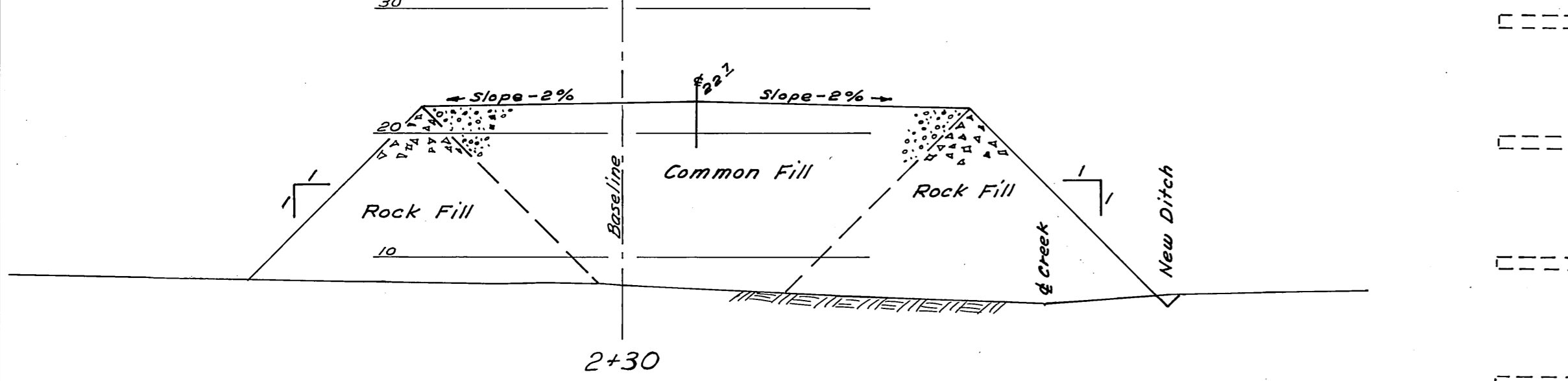
0+65



1+63

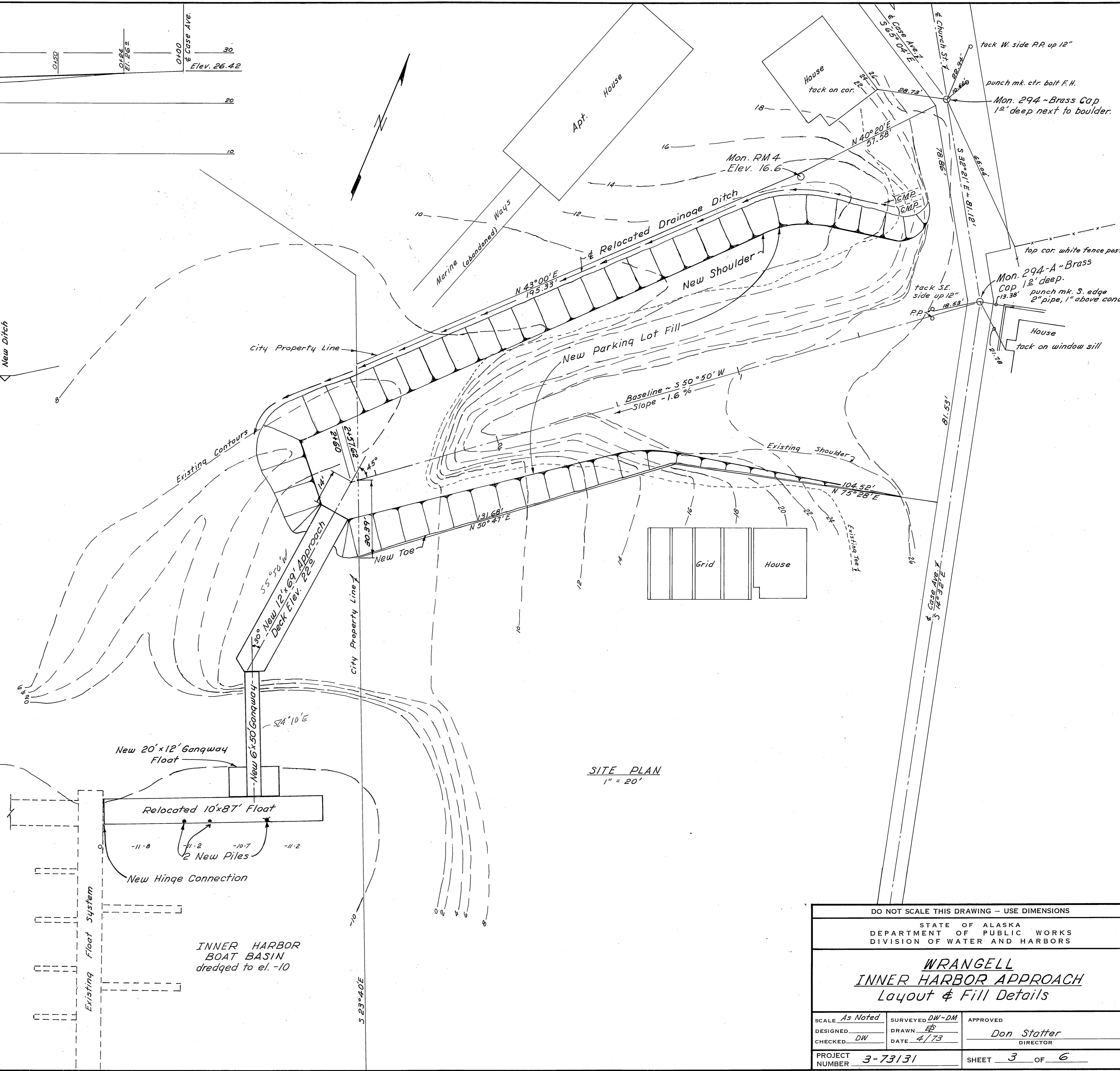


2+05



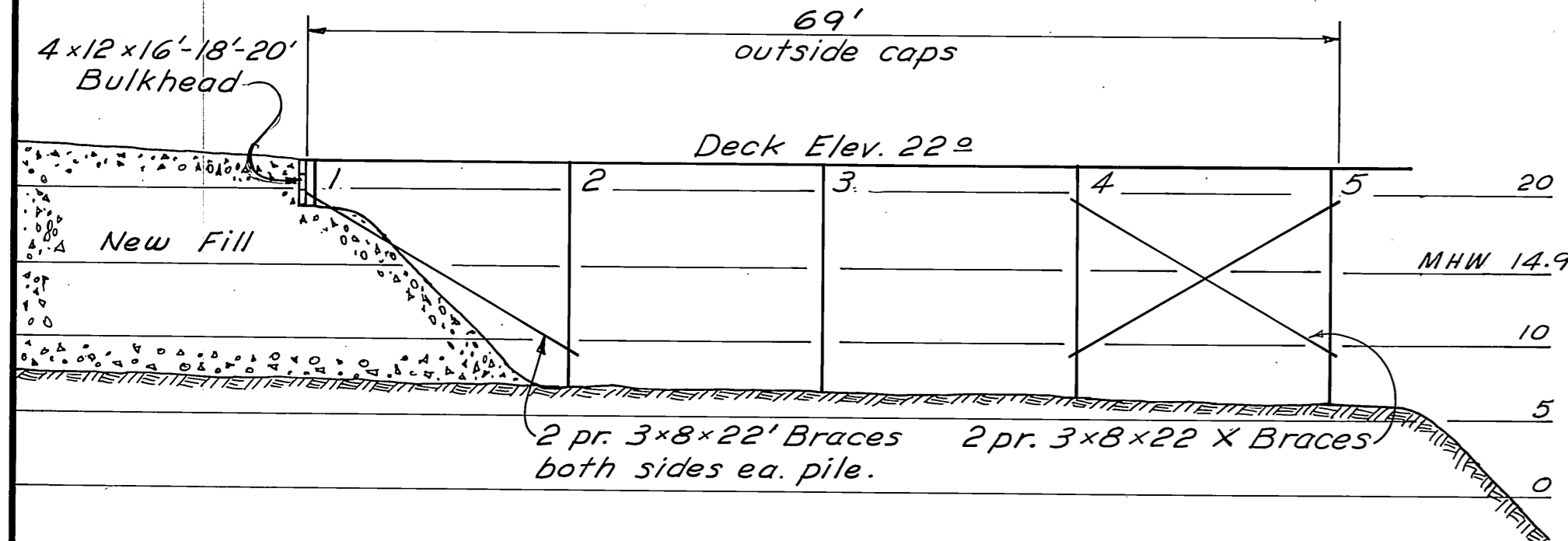
2+30

TYPICAL CROSS SECTIONS
Scale 1"=10'

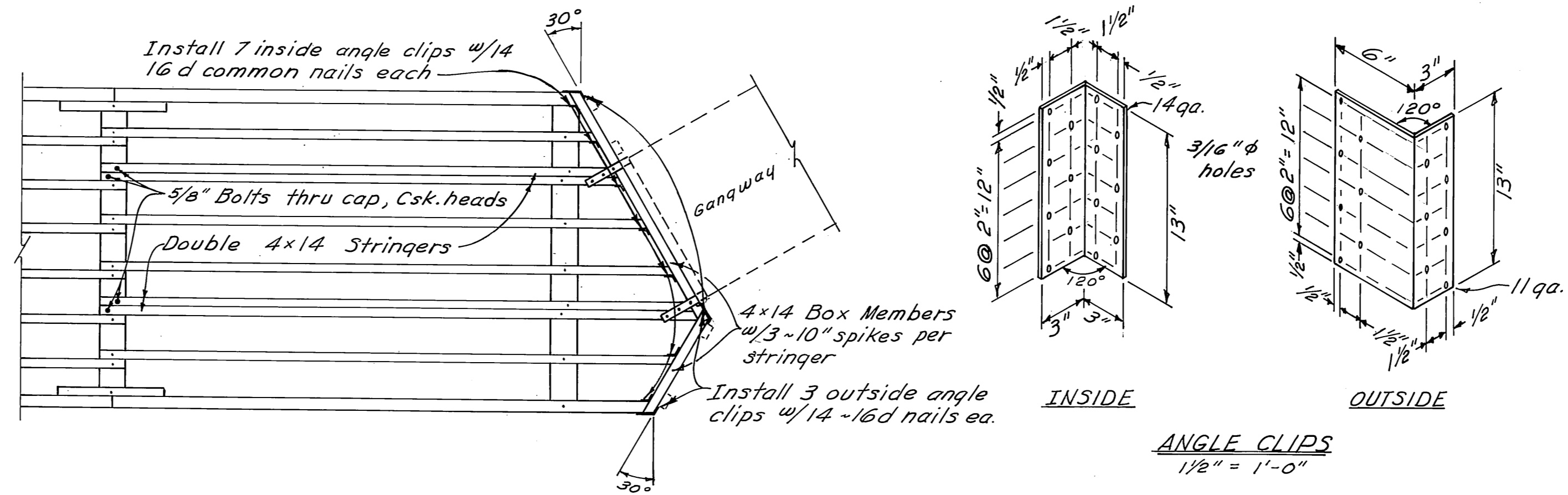


SITE PLAN
1"=20'

DO NOT SCALE THIS DRAWING - USE DIMENSIONS		
STATE OF ALASKA DEPARTMENT OF PUBLIC WORKS DIVISION OF WATER AND HARBORS		
WRANGELL INNER HARBOR APPROACH Layout & Fill Details		
SCALE: As Noted	SURVEYED: DW-DM	APPROVED:
DESIGNED: DW	DRAWN: EB	Don Statter
CHECKED: DW	DATE: 4/73	DIRECTOR
PROJECT NUMBER: 3-73131	SHEET 3 OF 6	



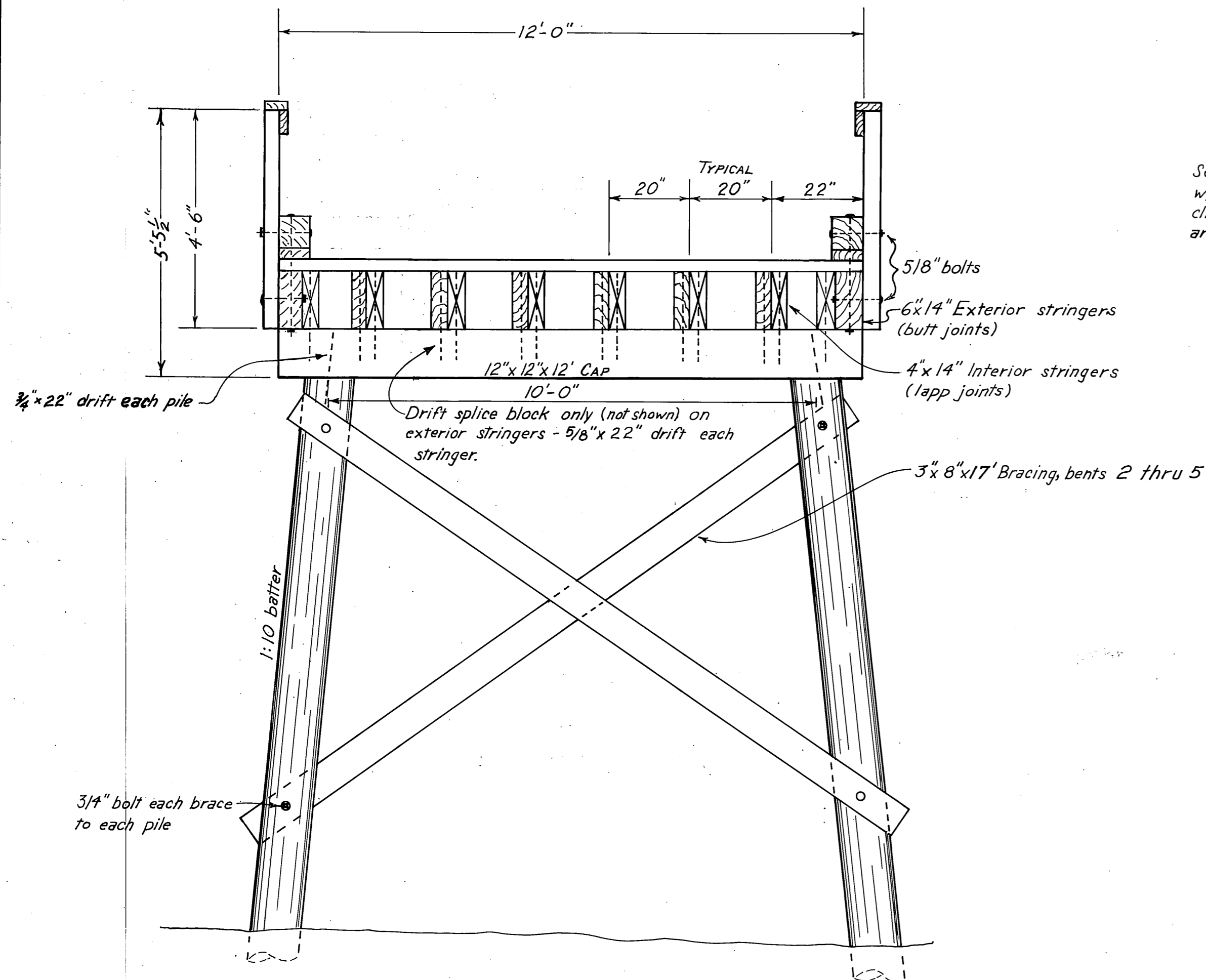
PROFILE
1"=10"



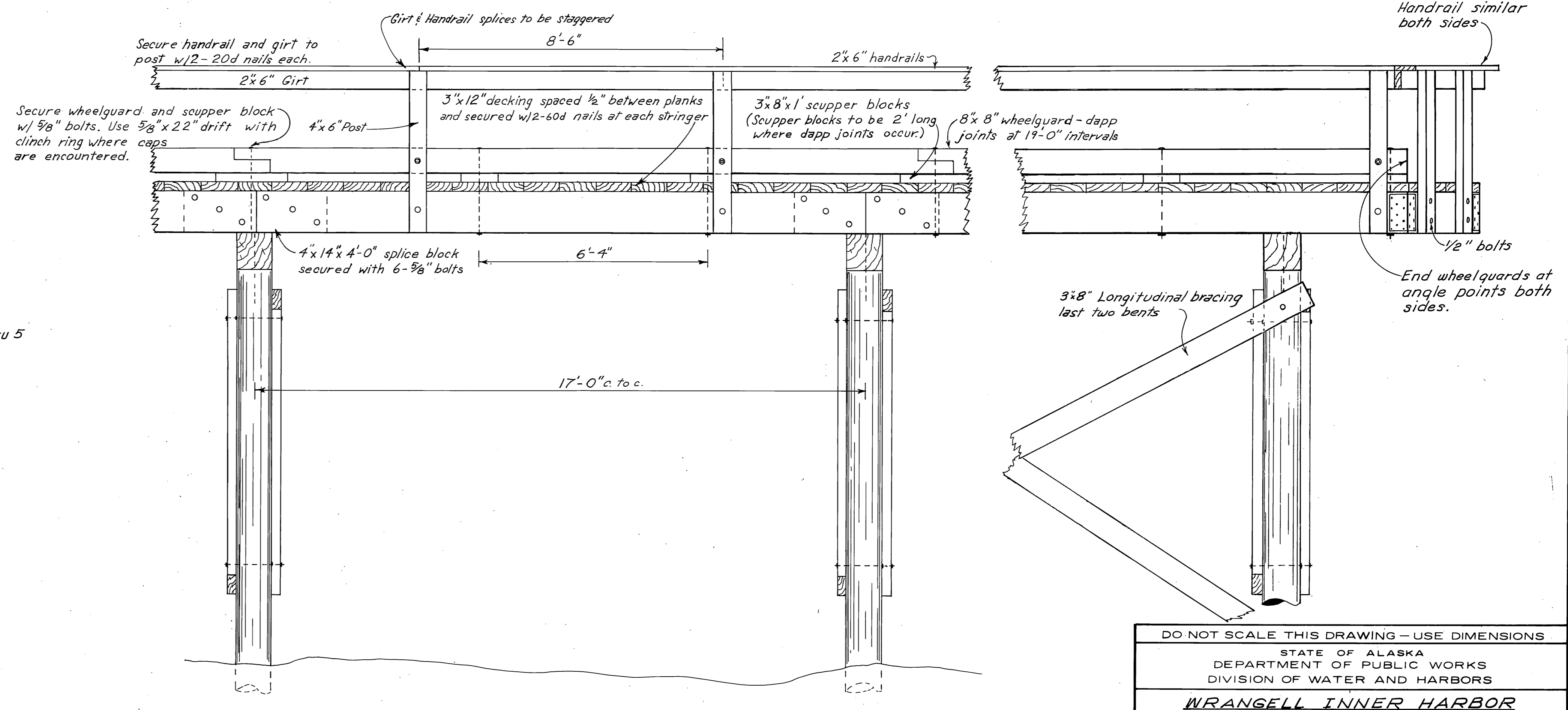
END FRAMING PLAN
1/4"=1'-0"

ITEM	MATERIALS			TYPE
	GRADE	DRESSING	Treatment	
Piling	Class B		12" Creo.	Douglas Fir
Bracing	Select Struc.	Rough	"	"
Caps	"	S4S	8" Creo.	"
Ext. Stringers	"	"	"	"
Splice Blocks	"	S2E	"	"
Int. Stringers	"	"	"	"
Box Members	"	S4S	"	"
Decking	"	S1S2E	"	"
Scupper Block	"	S4S	"	"
Wheelguard	"	"	"	"
Handrail Post	"	"	"	"
Girt	"	"	0.6" Penta.	"
Handrail	"	"	0.6" Penta.	"

Hardware to be galv. w/malleable iron washers between all nut & wood surfaces.
Bolts to be mushroom head type
Bolt holes to be drilled 1/16" oversize
Drift holes to be drilled 1/16" undersize
All drill holes to be treated w/hot creosote oil.
All pressure treated creosote & penta material shall be cut prior to treatment.



TYPICAL APPROACH SECTION
Scale 1/2"=1'-0"



TYPICAL APPROACH ELEVATION
Scale 1/2"=1'-0"

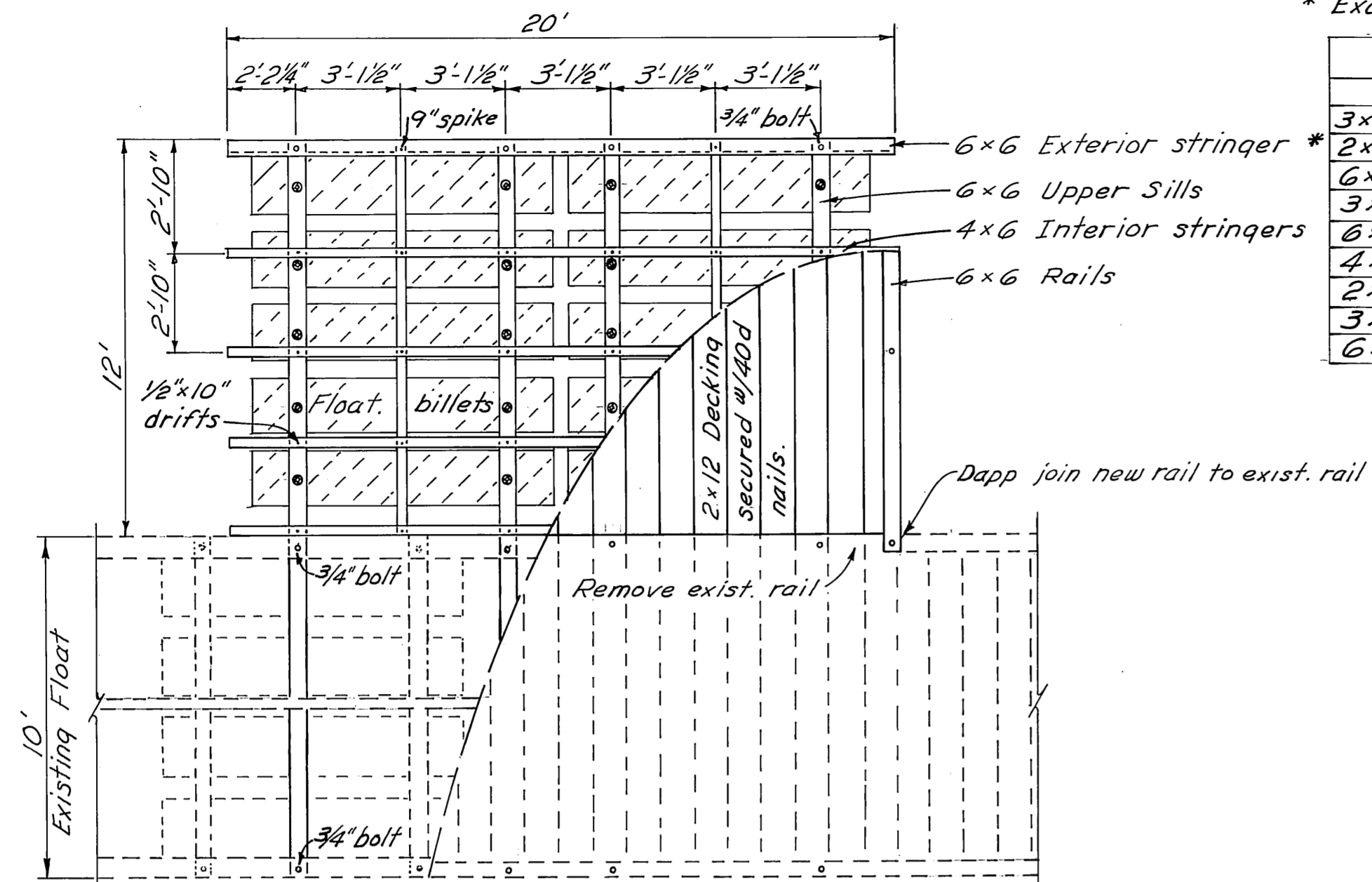
DO NOT SCALE THIS DRAWING - USE DIMENSIONS

STATE OF ALASKA
DEPARTMENT OF PUBLIC WORKS
DIVISION OF WATER AND HARBORS

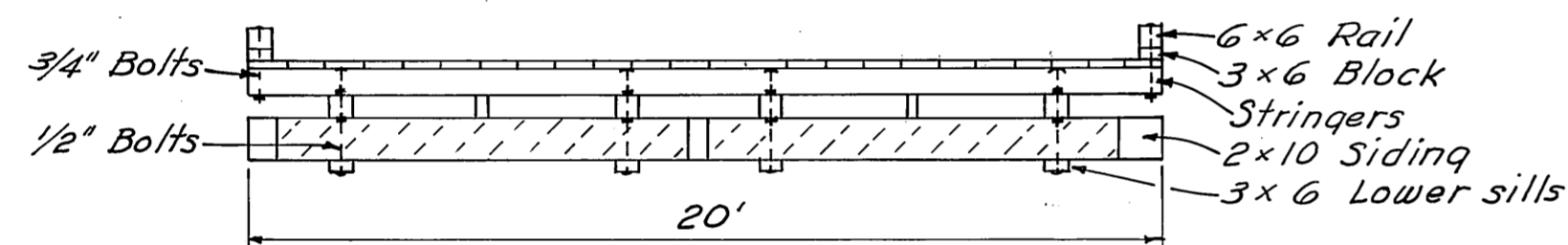
**WRANGELL INNER HARBOR
TYPICAL 12'-0" APPROACH
CONSTRUCTION DETAILS**

SCALE As Shown	SURVEYED DW/DM	APPROVED
DESIGNED DS	DRAWN CED	Don Statter
CHECKED D.C.W.	DATE 5-73	DIRECTOR
PROJECT NUMBER 3-73131	SHEET 4 OF 6	

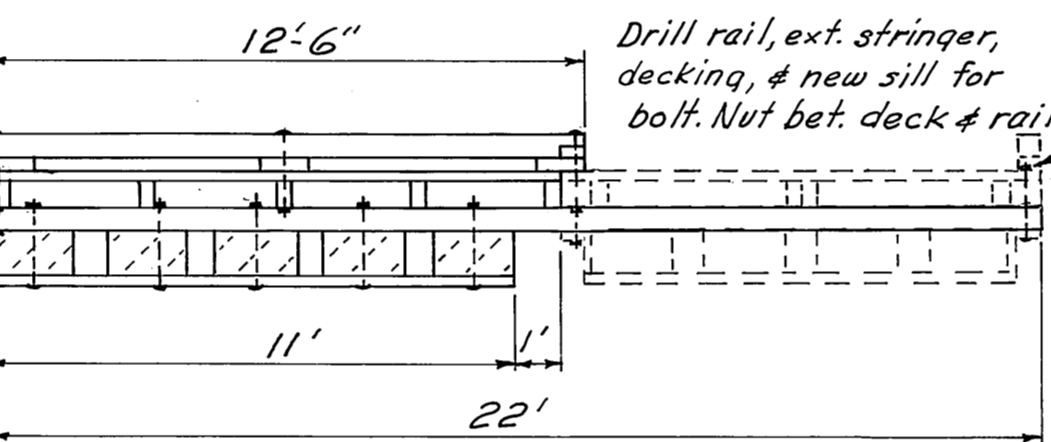
No rail across end under ganqway.



PLAN



ELEVATION

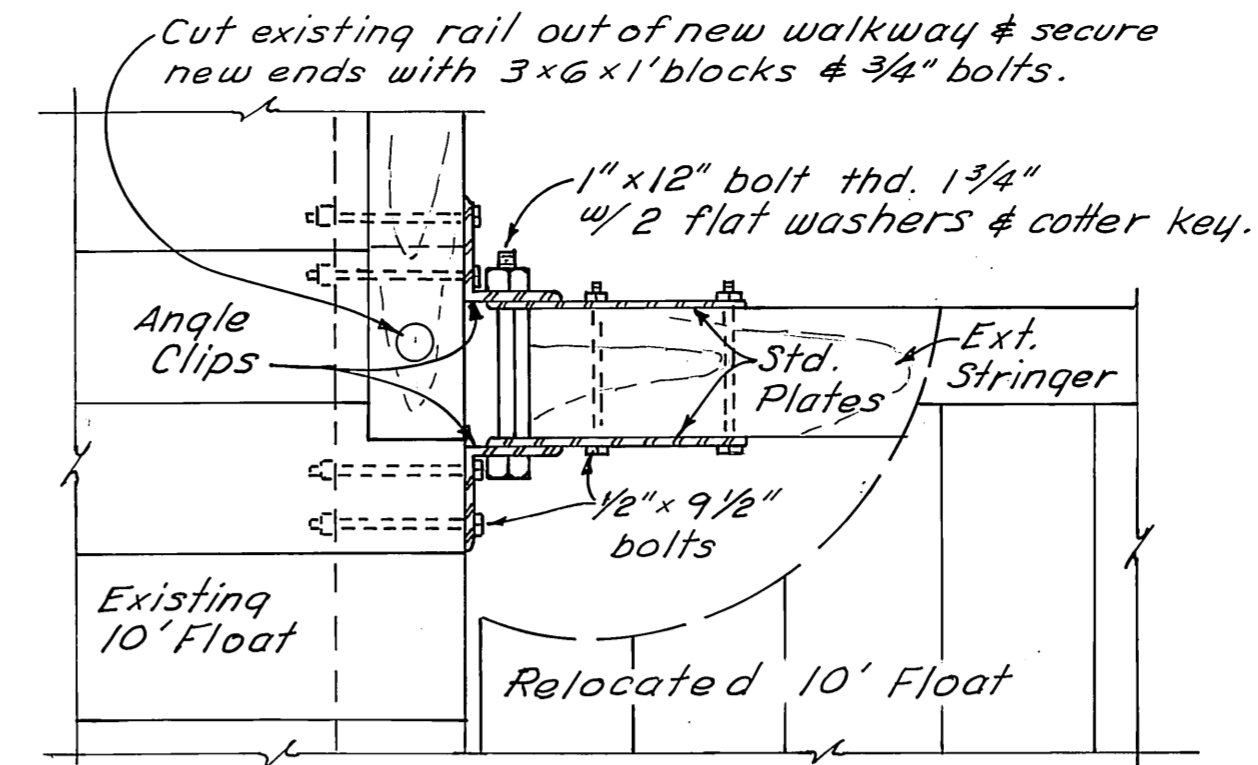


SECTION

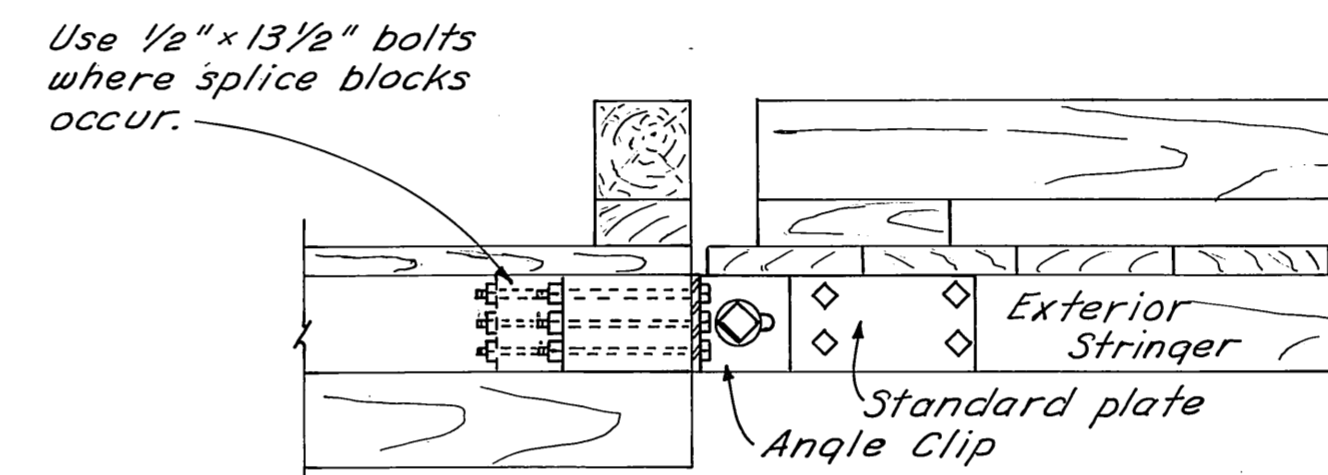
GANGWAY FLOAT
1/4" = 1'-0"

NOTE:
A barrier of 6 mil black polyethylene shall be placed between the contact surfaces of all creosote timber & floatation material.
* Exact width to conform to width of floatation material

ITEM	DRESSING	TREATMENT
3x6 Lower Sills	Rough	12# Creo.
2x10 Siding	S2E	" "
6x6 Upper Sills	"	8# Creo.
3x6 Mid Sills	"	" "
6x6 Ext. Stringers	"	" "
4x6 Int. Stringers	"	" "
2x12 Decking	Rough	0.6# Penta
3x6 Blocking	"	" "
6x6 Rails	"	" "

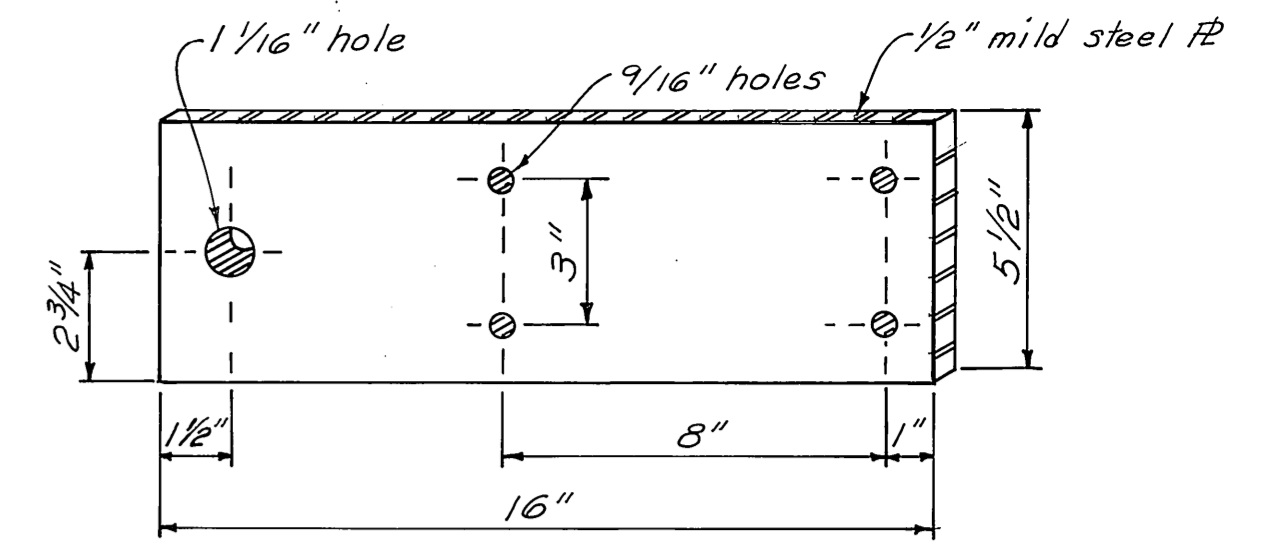


PLAN
1" = 1'-0"

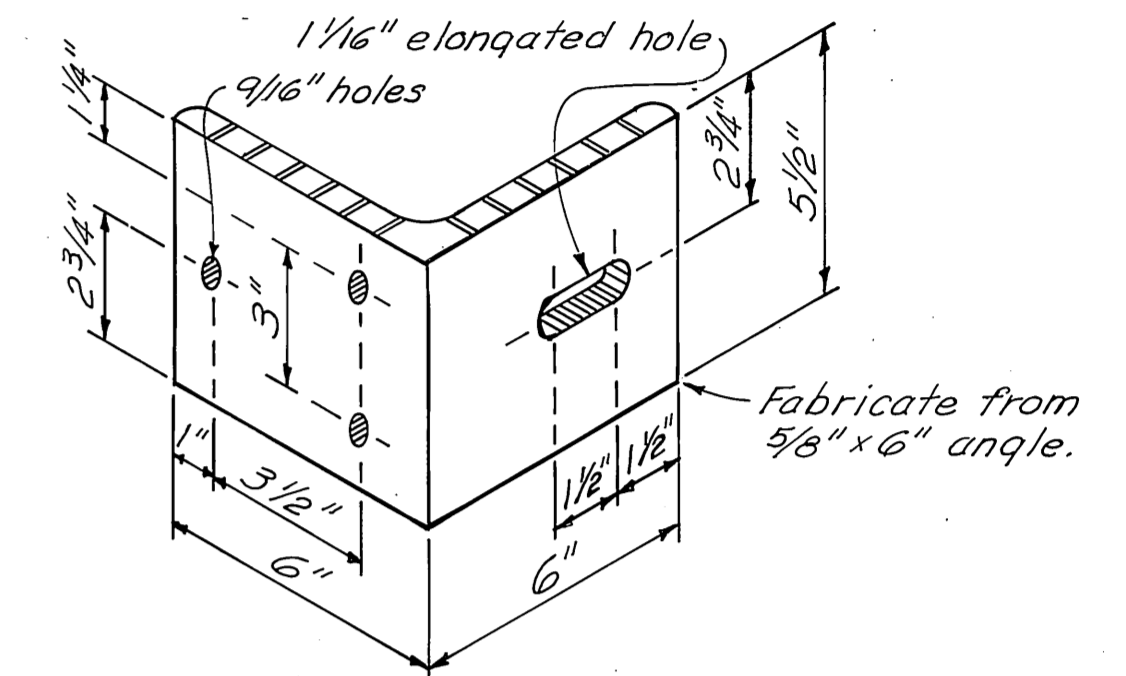


ELEVATION
1" = 1'-0"

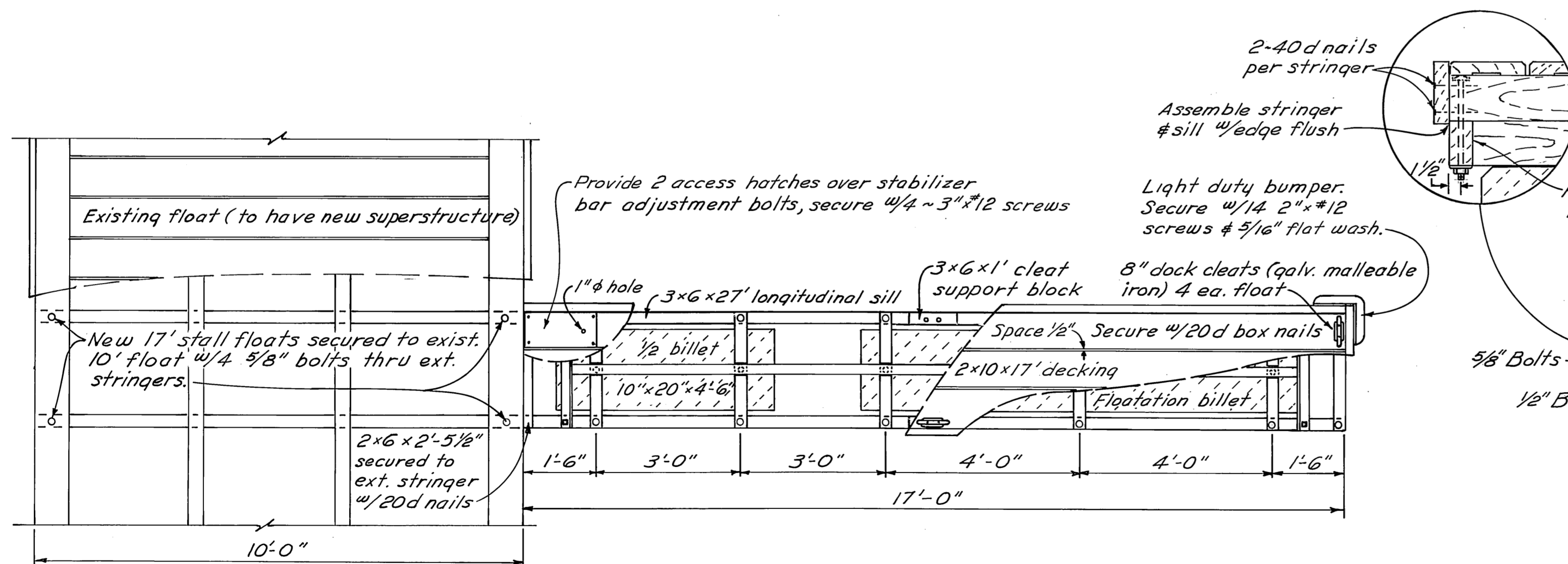
HINGE CONNECTION DETAILS



STANDARD PLATE
3" = 1'-0"

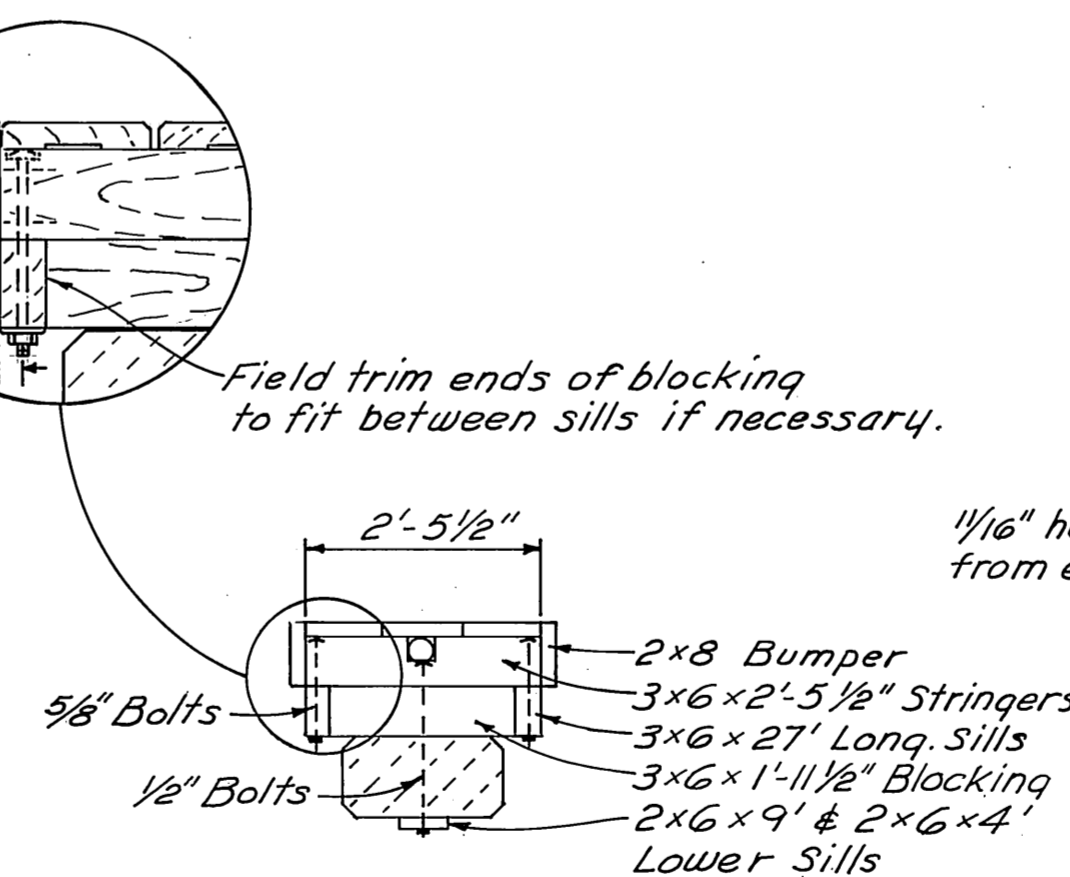


ANGLE CLIP
3" = 1'-0"

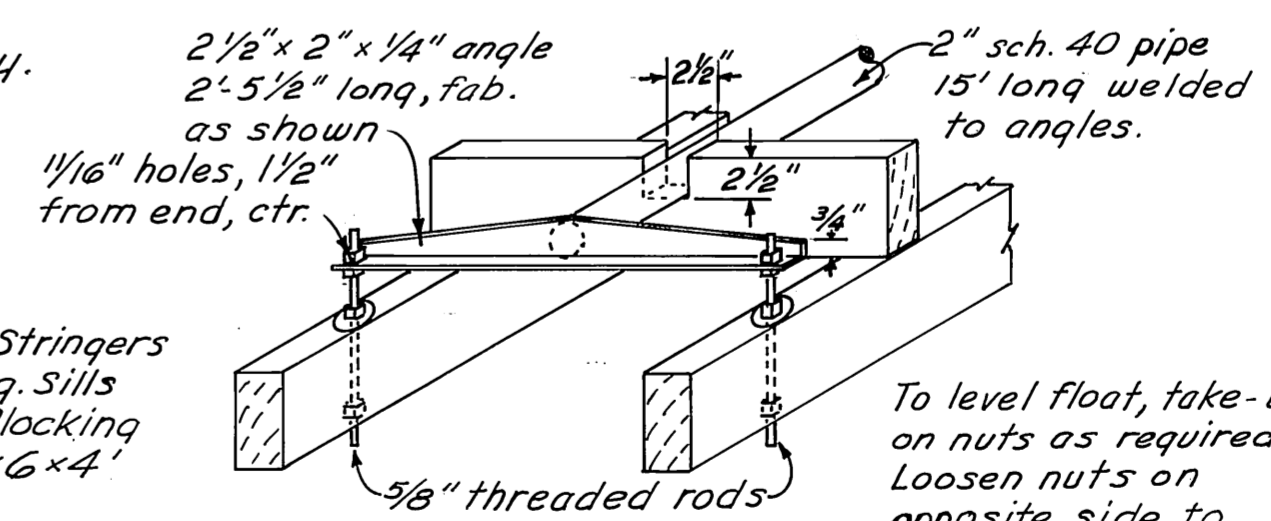


PLAN
1/2" = 1'-0"

17' STALL FLOAT DETAILS



SECTION
1/2" = 1'-0"



STABILIZER
1" = 1'-0"

ITEM	DRESSING	TREATMENT
2x6 Lower Sills	Rough	12# Creo.
3x6 Long. Sills	S2E	8# Creo.
3x6 Blocking	"	" "
3x6 Stringers	"	" "
2x8 Bumpers	SAS	0.6# Penta.
2x10 Decking	Milled	" "

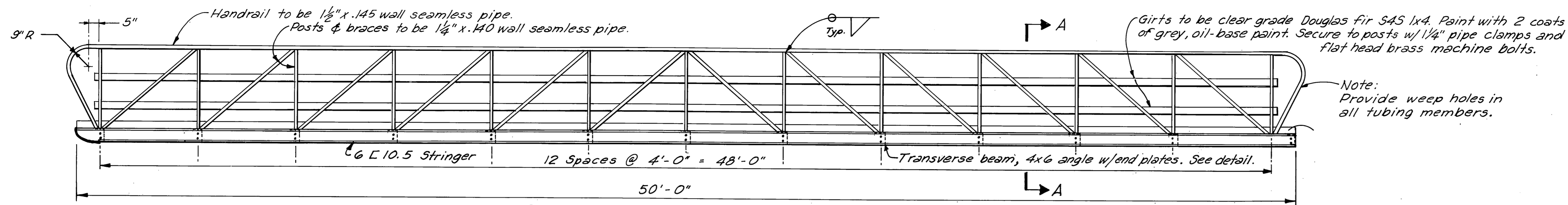
* See detail sheet 2.

DO NOT SCALE THIS DRAWING - USE DIMENSIONS

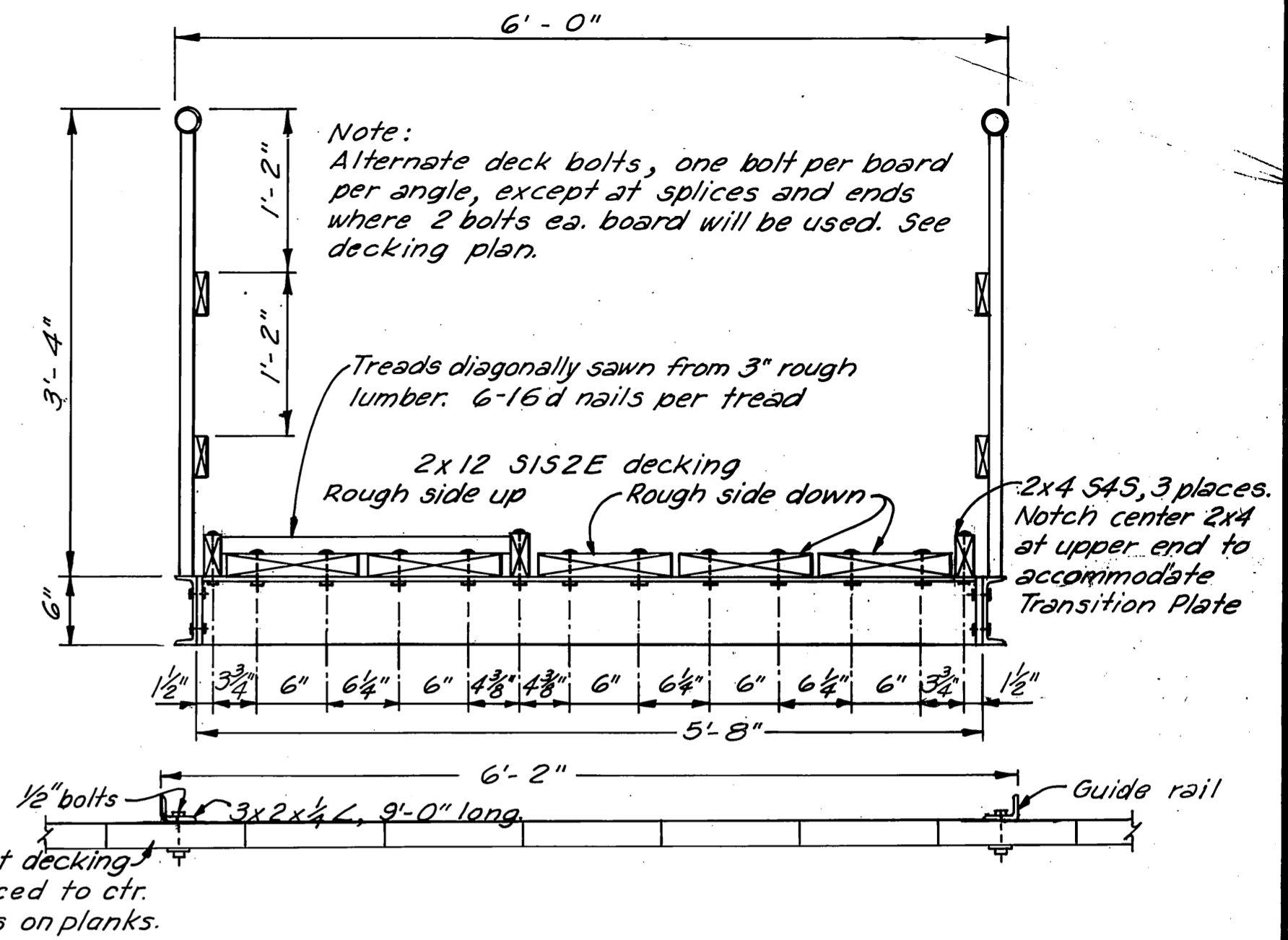
STATE OF ALASKA
DEPARTMENT OF PUBLIC WORKS
DIVISION OF WATER AND HARBORS

WRANGELL
GANGWAY FLOAT ~ HINGE CONNECTION
& 17' STALL FLOAT DETAILS

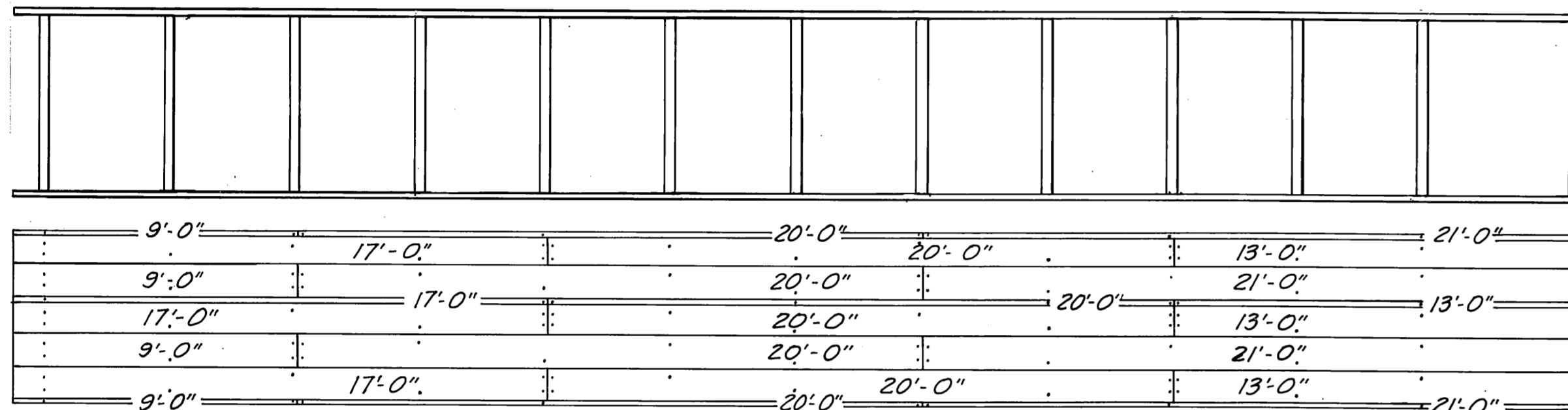
SCALE <i>AS NOTED</i>	SURVEYED <i>-</i>	APPROVED
DESIGNED <i>-</i>	DRAWN <i>ES</i>	<i>Don Statter</i> DIRECTOR
CHECKED <i>D.C.W.</i>	DATE <i>5-73</i>	
PROJECT NUMBER <i>3-73131</i>	SHEET <i>5</i> OF <i>6</i>	



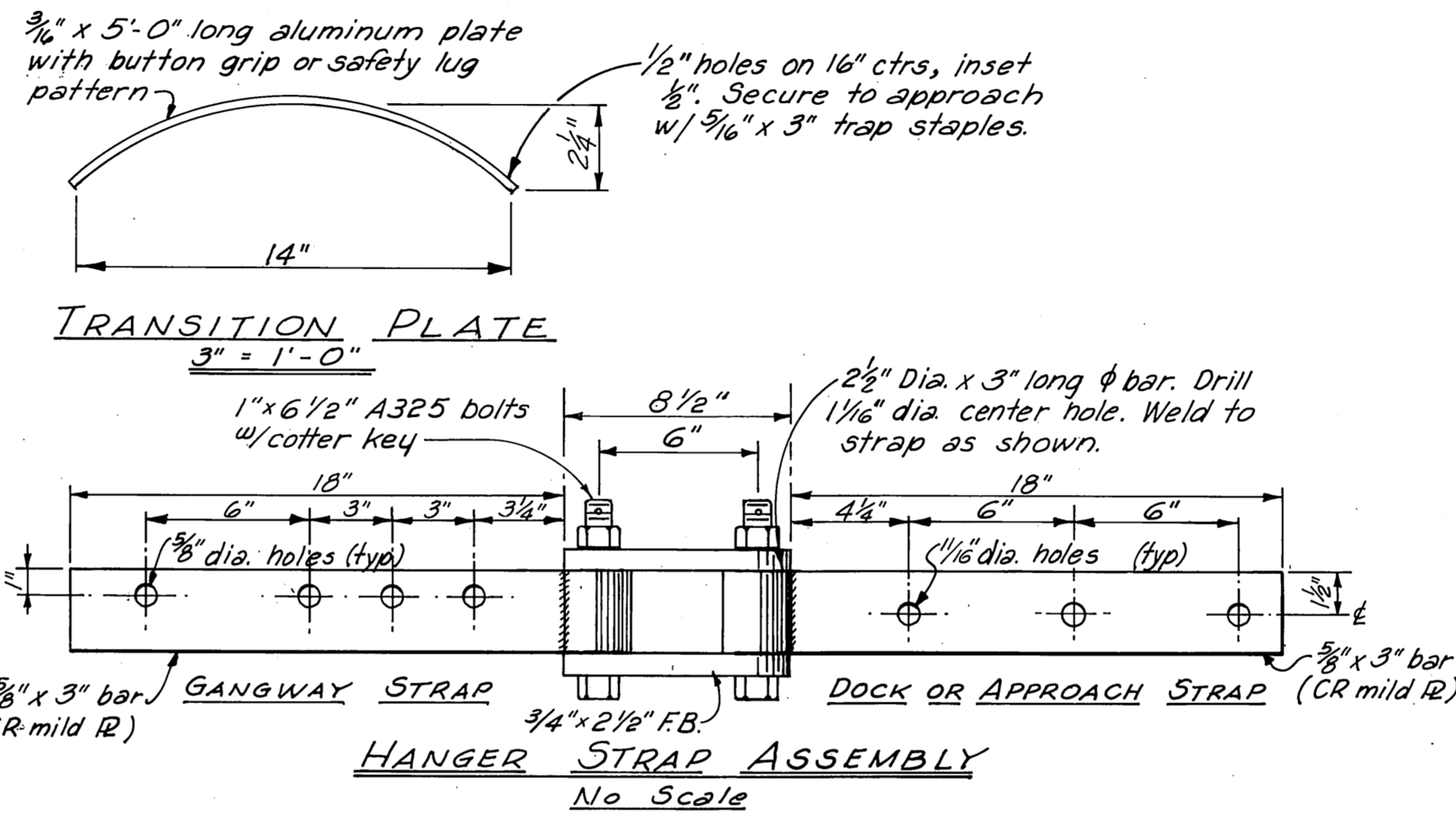
SIDE ELEVATION
3/8" = 1'-0"



SECTION A-A
1" = 1'-0"

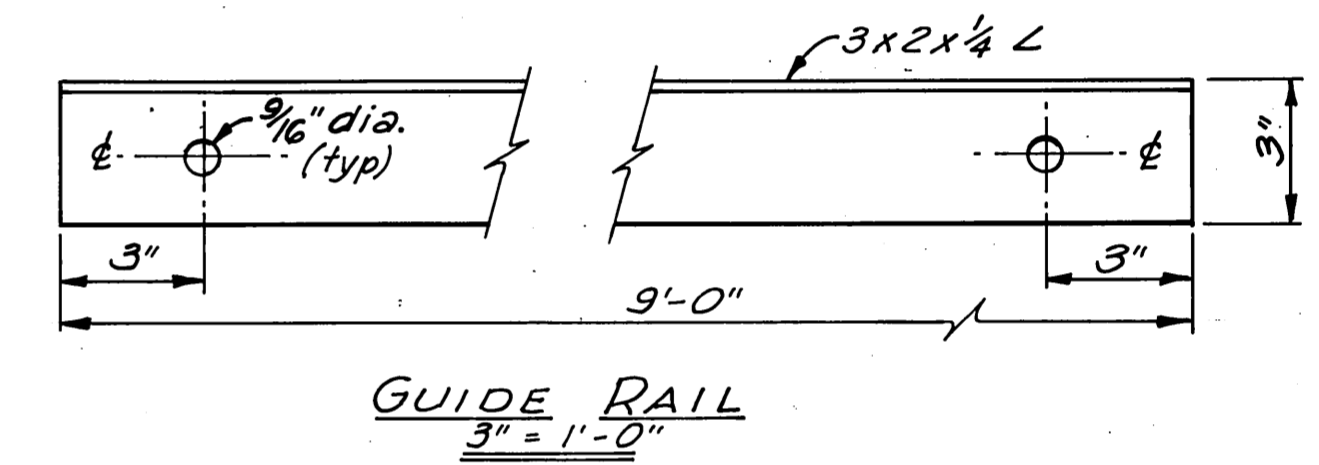


DECKING SPLICE LAYOUT
1/4" = 1'-0"

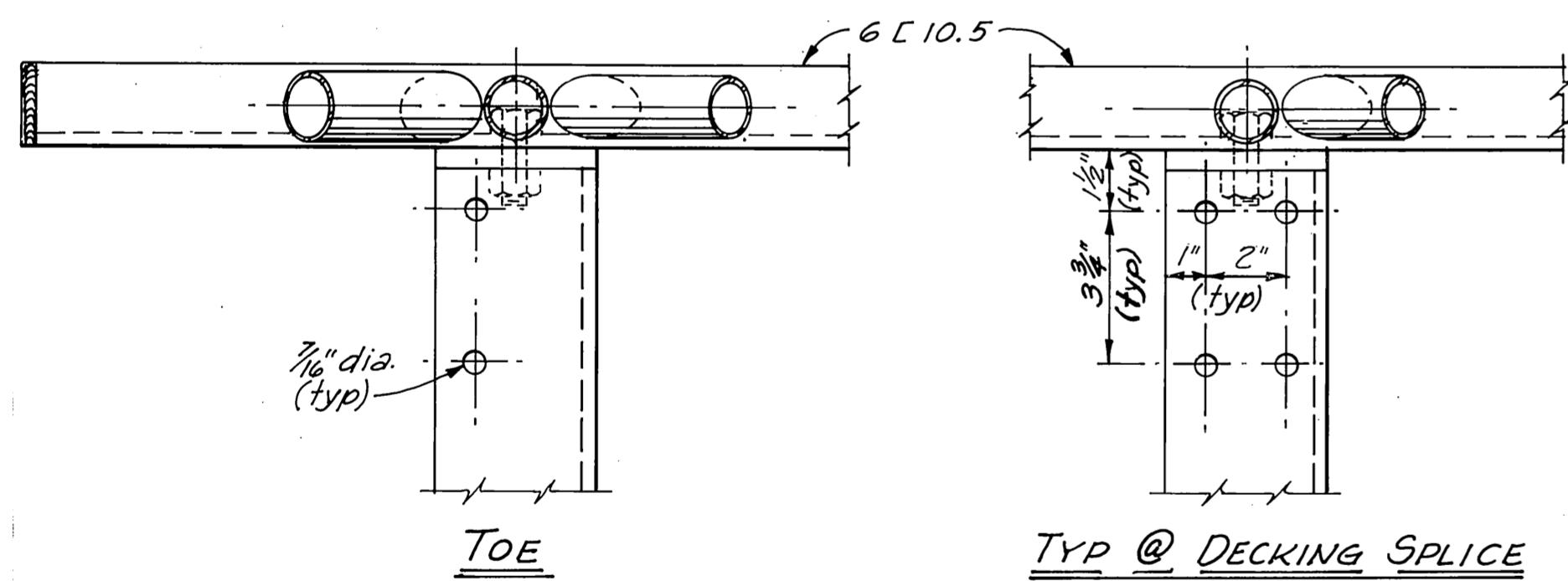


TRANSITION PLATE
3" = 1'-0"

HANGER STRAP ASSEMBLY
No Scale

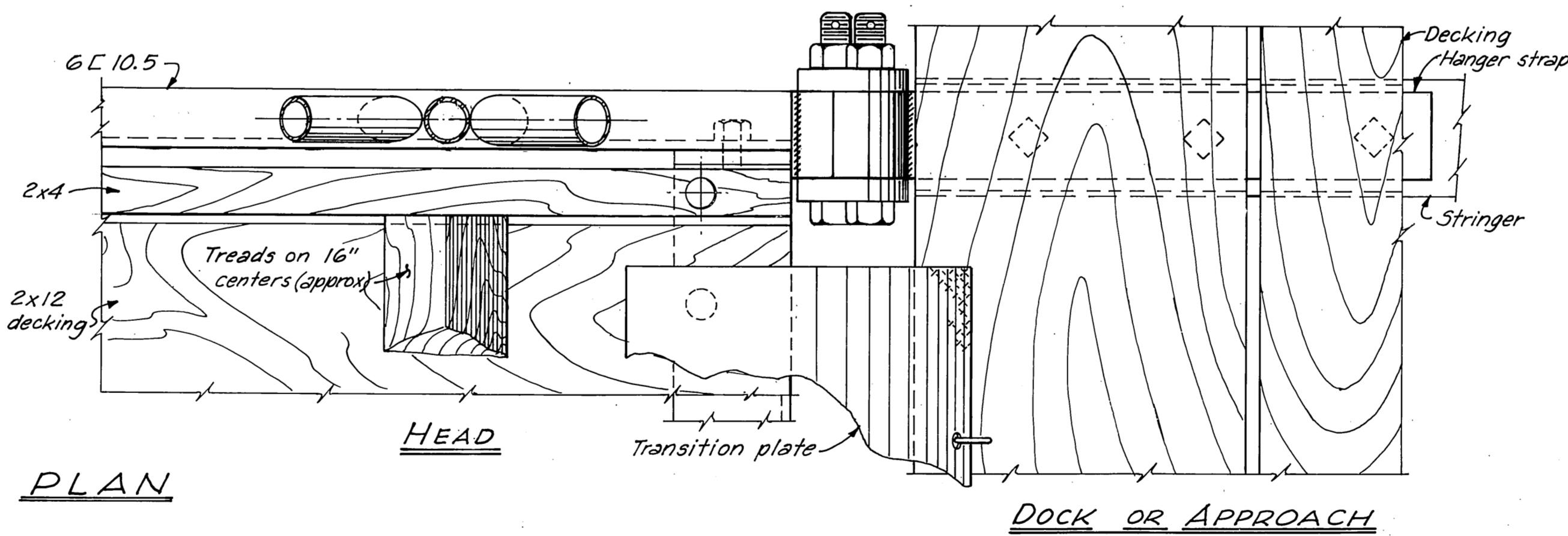


GUIDE RAIL
3" = 1'-0"



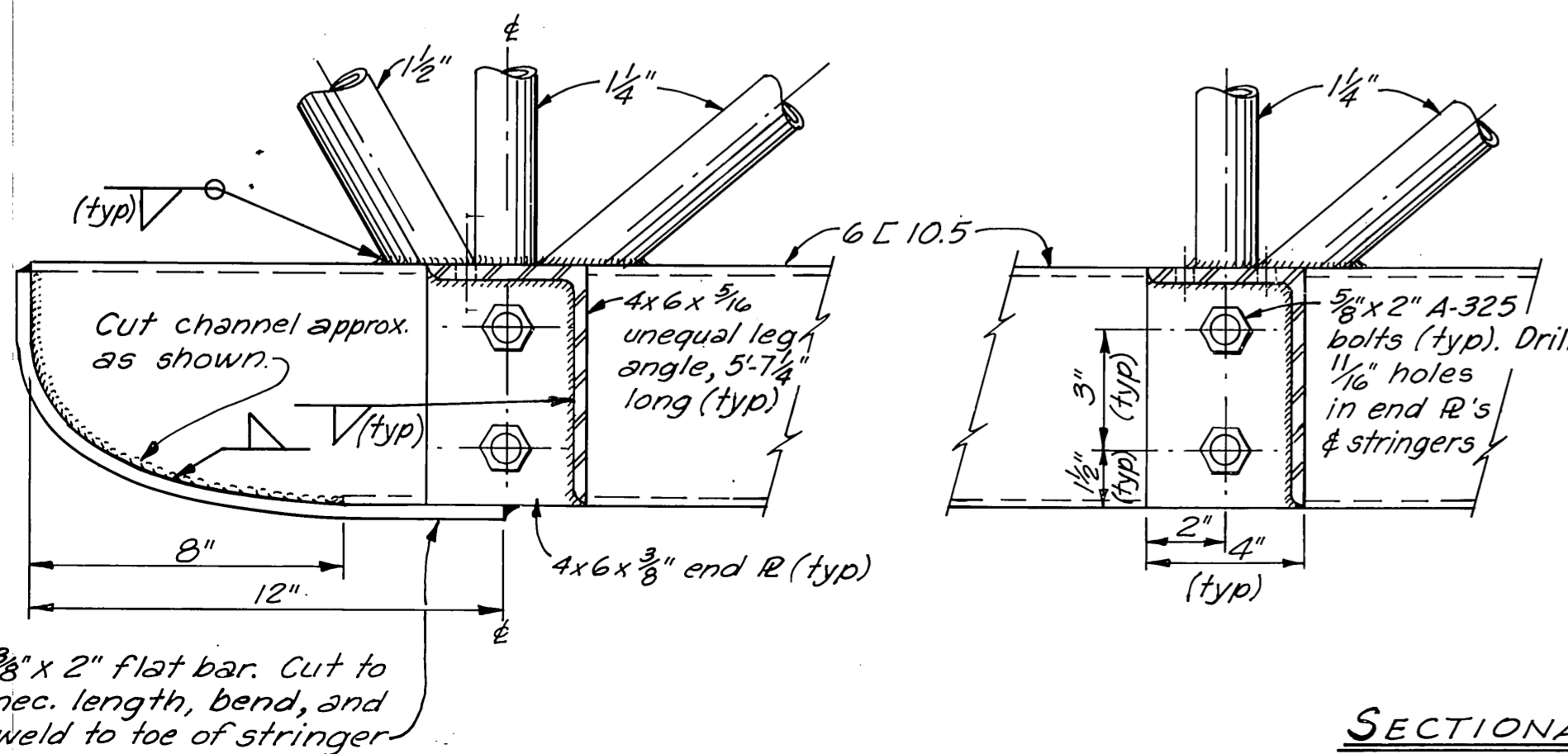
TOE

TYP @ DECKING SPLICE

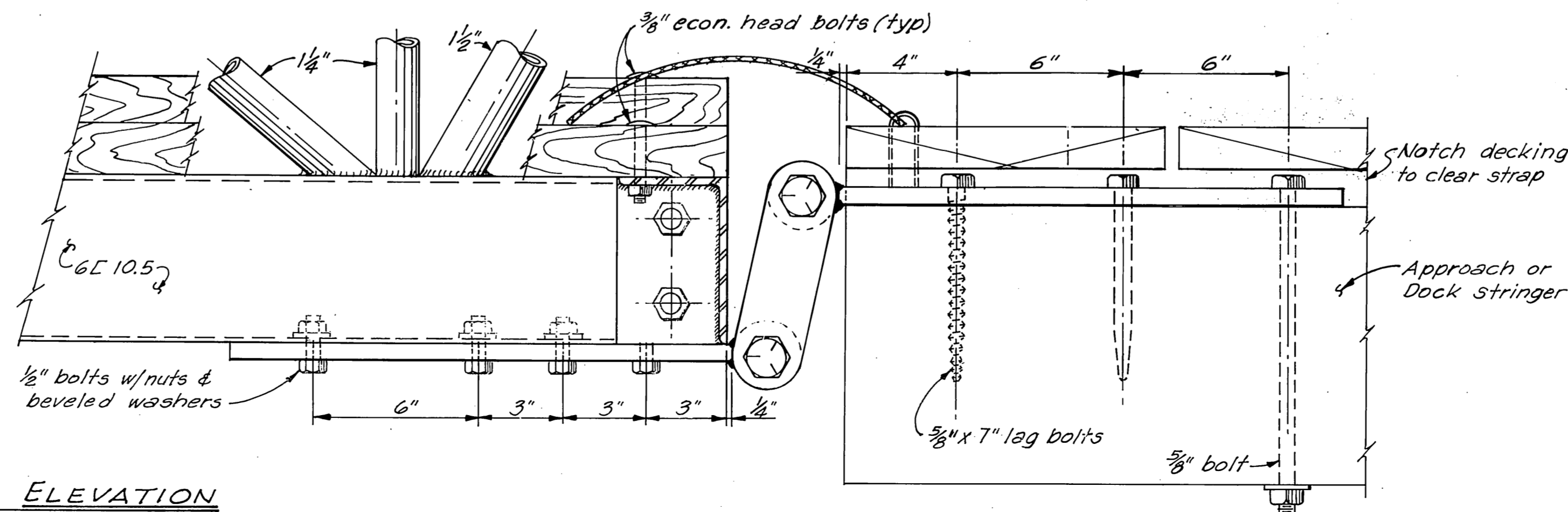


PLAN

DOCK OR APPROACH



SECTIONAL ELEVATION CONSTRUCTION DETAILS
3" = 1'-0"



- NOTES:**
1. All seamless pipe shall conform to ASTM A-53.
 2. All channels, angles & plates shall conform to ASTM A-36.
 3. Trusses shall be shop fabricated & assembled including hangers.
 4. Splices shall be held to a minimum and, where necessary, shall be made in a manner that will not reduce the strength of the truss.
 5. No tubing or channel splices will be permitted within the middle half of the truss structure.
 6. Trusses & transverse beams shall be hot dipped galvanized after fabrication and in accordance with ASTM A-123, A-384, A-385 & A-386.
 7. All steel hardware & fasteners shall be hot dipped galvanized in accordance with ASTM A-153.
 8. Decking & deck spacers shall be Select Structural grade Douglas fir, Pentachlorophenol pressure treated to 0.6 lb. cu. ft. retention, and shall be field drilled to match shop drilled holes in transverse members.

Revised 3-12-73 Hanger linkage
Lumber grade
Penta. retent
Misc. holes, no. & size
Revised 4-7-71. Removed Tension Wires. ELS
JET

DO NOT SCALE THIS DRAWING - USE DIMENSIONS		
STATE OF ALASKA DEPARTMENT OF PUBLIC WORKS DIVISION OF WATER AND HARBORS		
WRANGELL		
TYPICAL STEEL GANGWAY CONSTRUCTION DETAILS		
SCALE <i>As shown</i>	SURVEYED <i>JT/RB</i>	APPROVED
DESIGNED <i>JT/RB</i>	DRAWN <i>JET</i>	<i>Don Statter</i>
CHECKED <i>DSM</i>	DATE <i>Dec. 1970</i>	DIRECTOR
PROJECT NUMBER <i>3-73131</i>	SHEET <i>6</i> OF <i>6</i>	