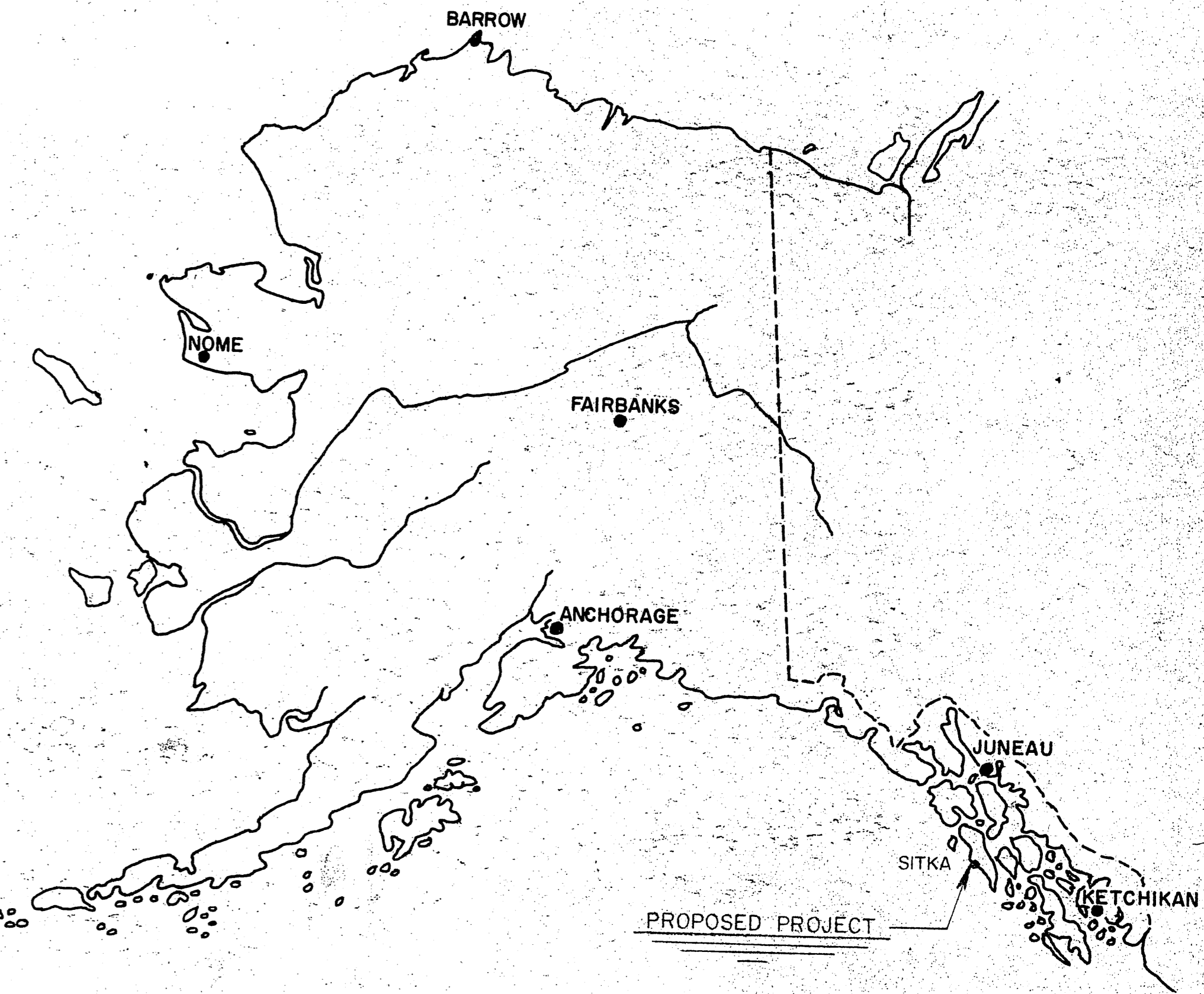


ALASKA HIGHWAY AND PUBLIC WORKS DEPARTMENT

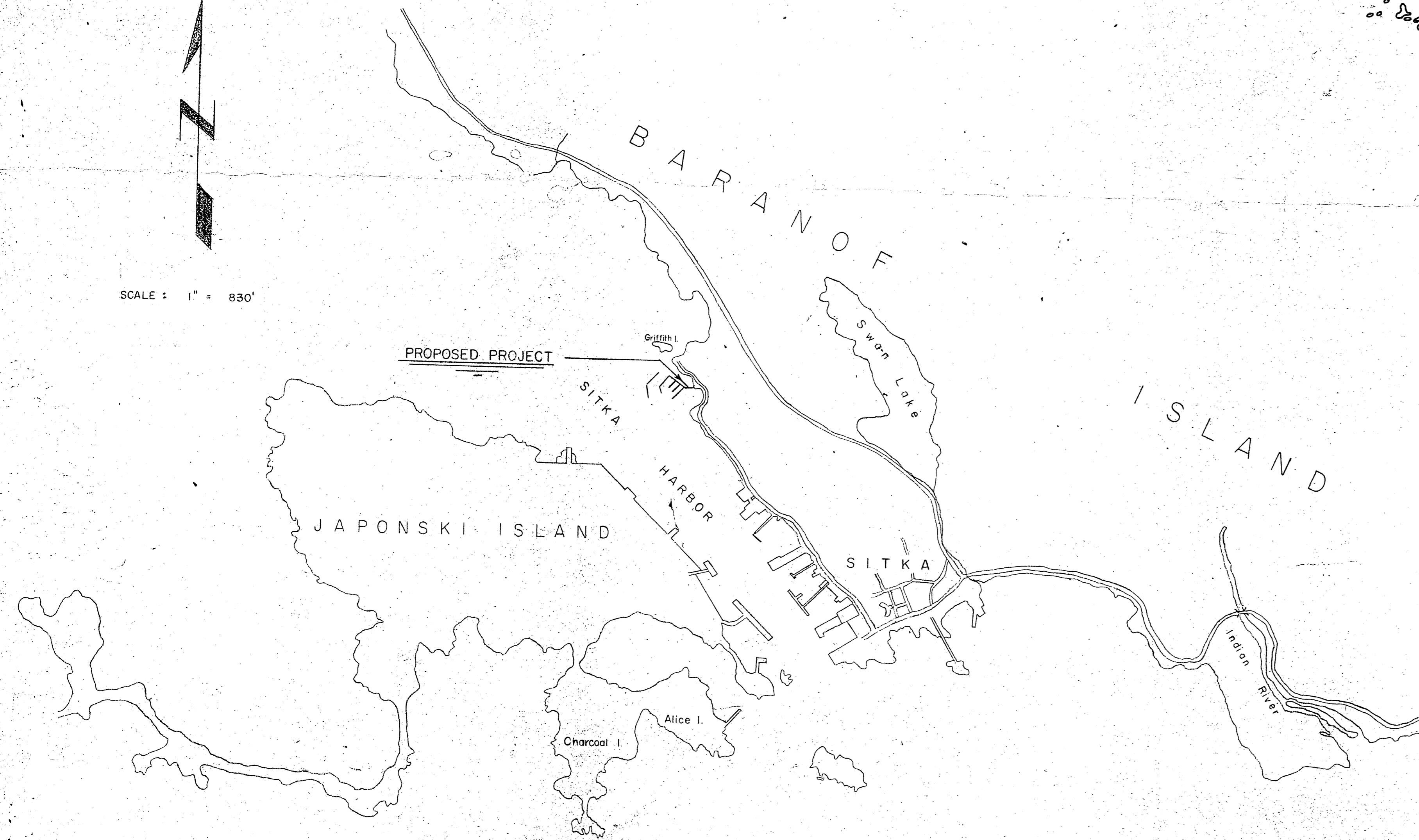
PUBLIC WORKS DIVISION

SITKA BOAT HARBOR

PROJECT 24-9651-64



SCALE : 1" = 830'



WORK SUMMARY

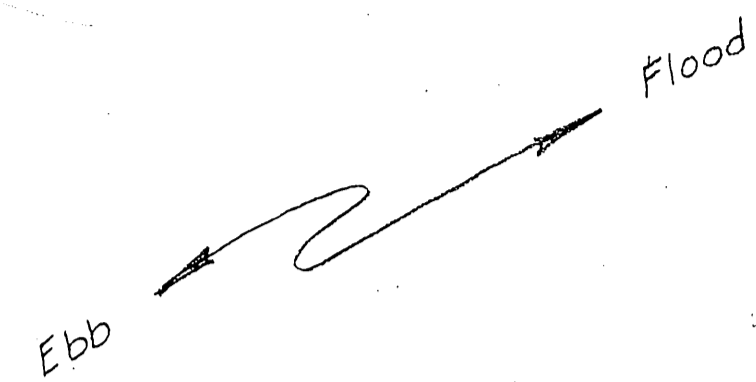
Major units of this project shall include construction of 600 Linear Feet of twin boom Breakwater secured with 16 triple pile dolphins totaling approximately 2928 L.F. of piling, 1547 L.F. of 10 foot wide Styrofoam Floats, 94 Float and Boat Mooring Piling totaling approximately 5290 L.F., 100 L.F. of Approach Trestle 6 foot wide, and one 50 foot long Gangway.

Exact location and orientation of the units to be determined by the Engineer.

INDEX TO SHEETS

Title Sheet	1
Layout	2
Approach and Breakwater	3
Styrofoam Float	4
Gangway	5

SITKA HARBOR



1006



STATE OF ALASKA
 DEPARTMENT OF PUBLIC WORKS
 DIVISION OF WATER & HARBORS

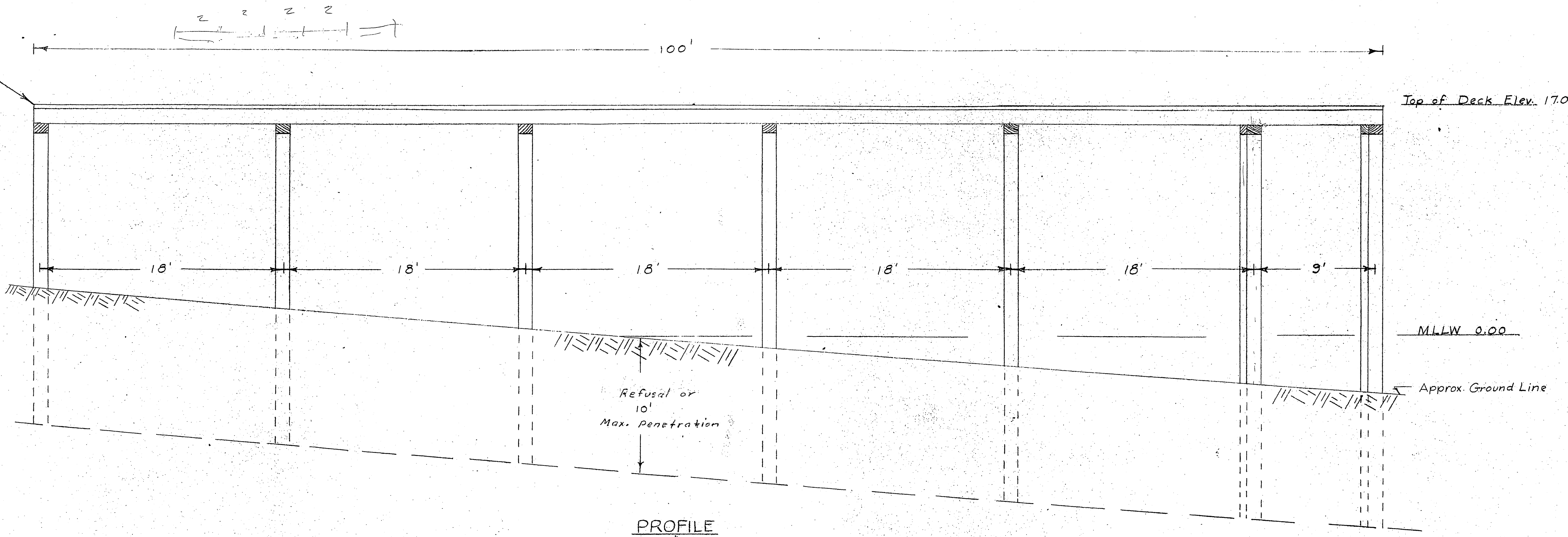
'AS-BUILT'
 SITKA BOAT HARBOR

SCALE 1" = 40'
 DATE 2-18-60

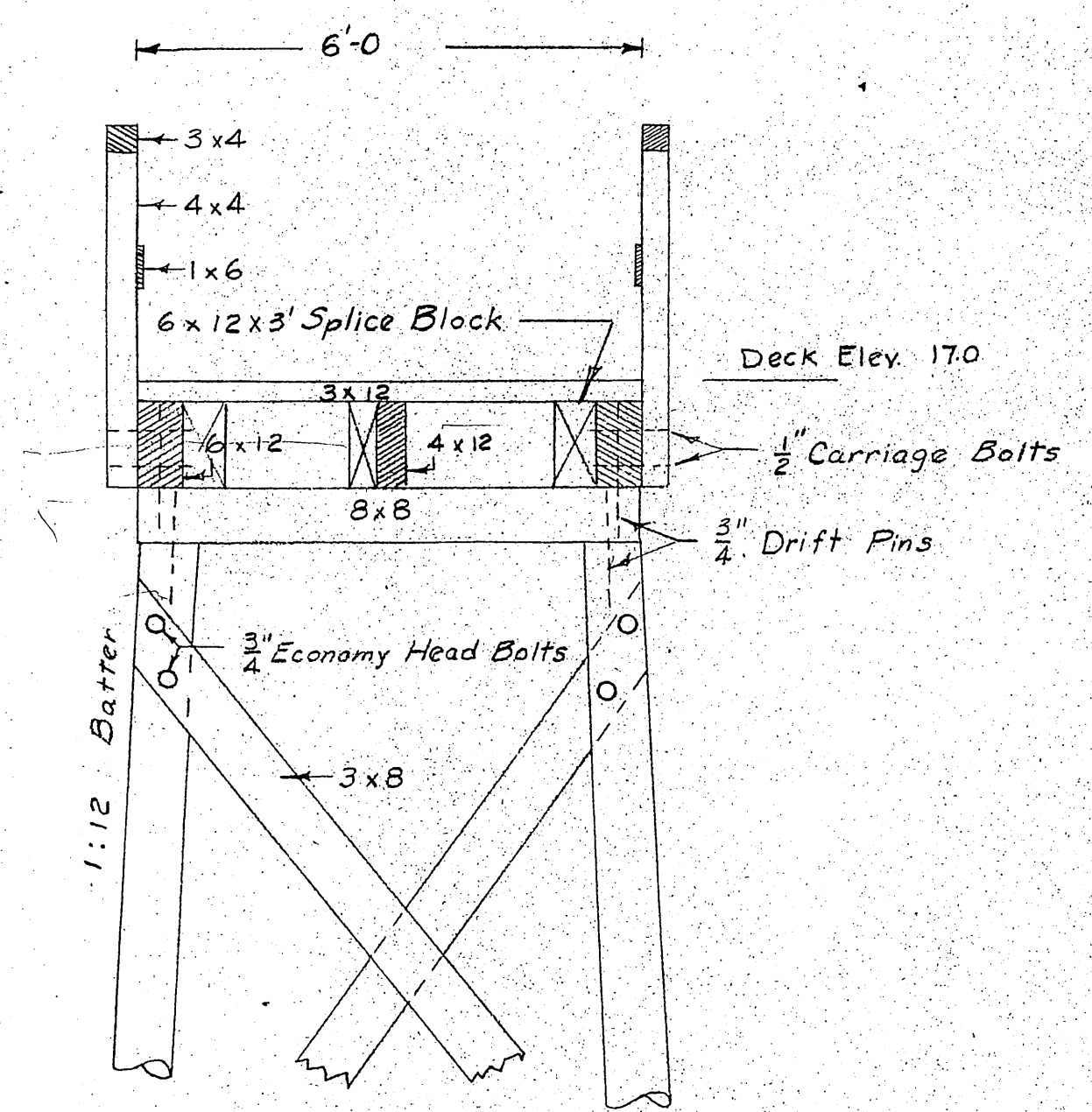
DRAWN BY EPH

16
 18
 20
 20 1/2

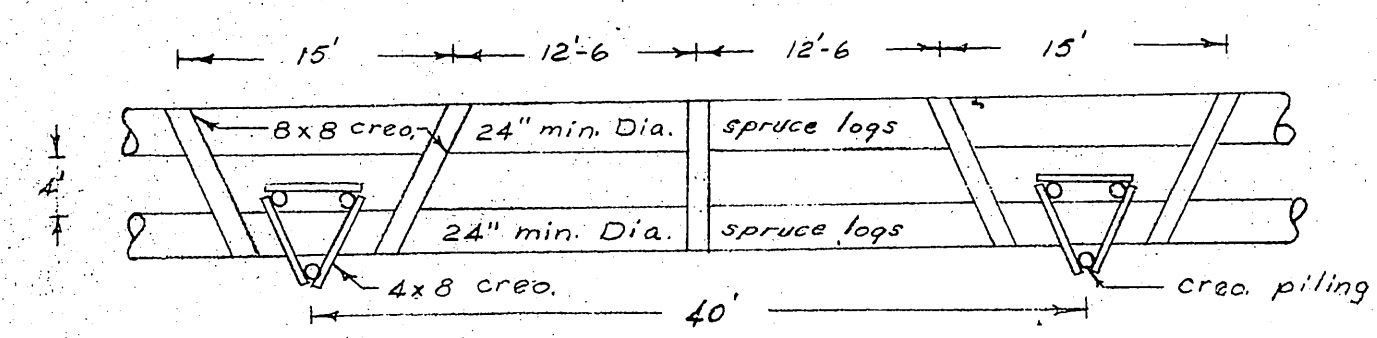
Connection Shall be made to Proposed Gravel Fill By Others (To be constructed by City of Sitka.)



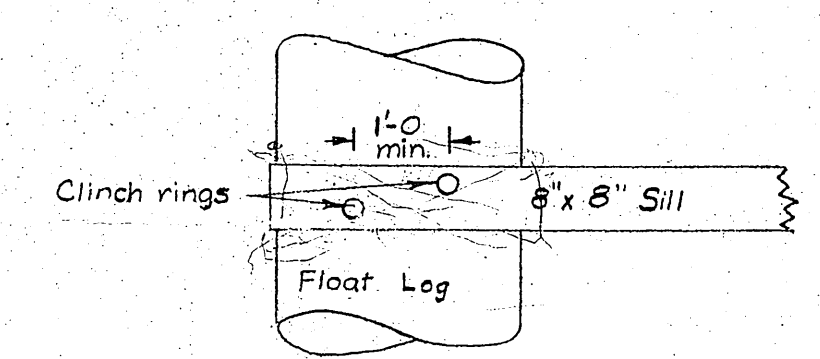
PROFILE APPROACH
SCALE: 1" = 5'



SECTION
1/2" = 1'

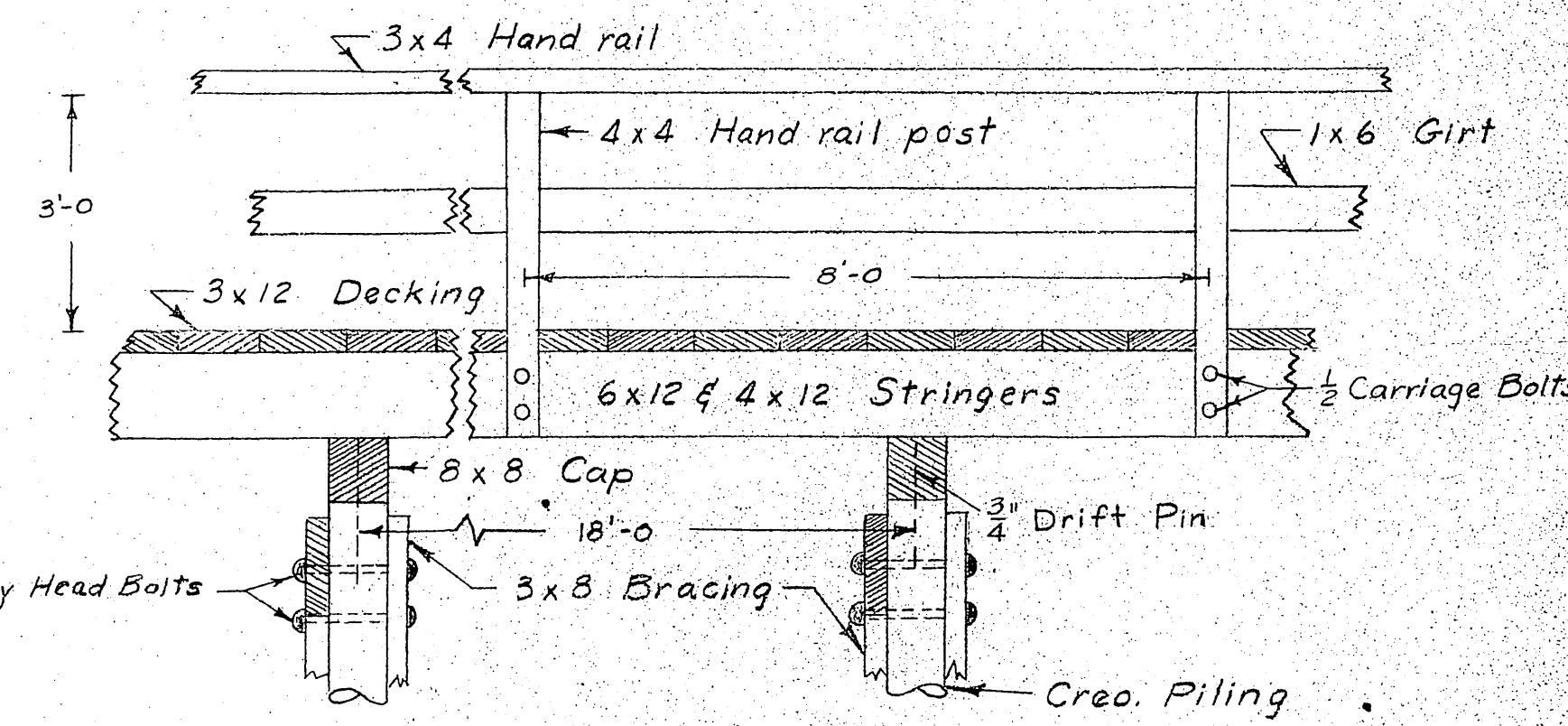


BREAKWATER PLAN
Two 300 ft Sections
1" = 10'



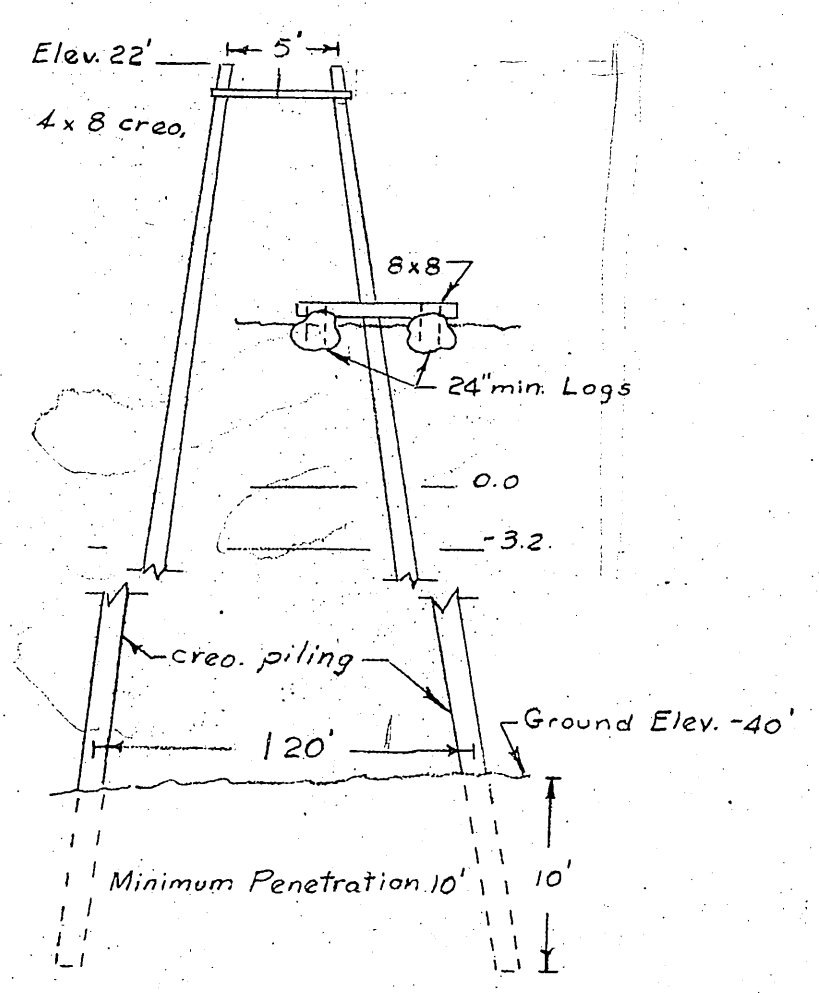
DRIFT PIN DETAIL
1/2" = 1'-0"

NOTE:
TREAT PILE TOPS ACCORDING TO SPECIFICATIONS.
4x12 STRINGERS LAP-JOINTED.
6x12 STRINGERS BUTT-JOINTED.
WASHERS SHALL BE PLACED BETWEEN NUTS & WOOD SURFACES IN ALL INSTANCES.
6 wraps of 5/8" cable, figure 8 fashion collaring sills.



ELEVATION APPROACH
SCALE: 1/2" = 1'

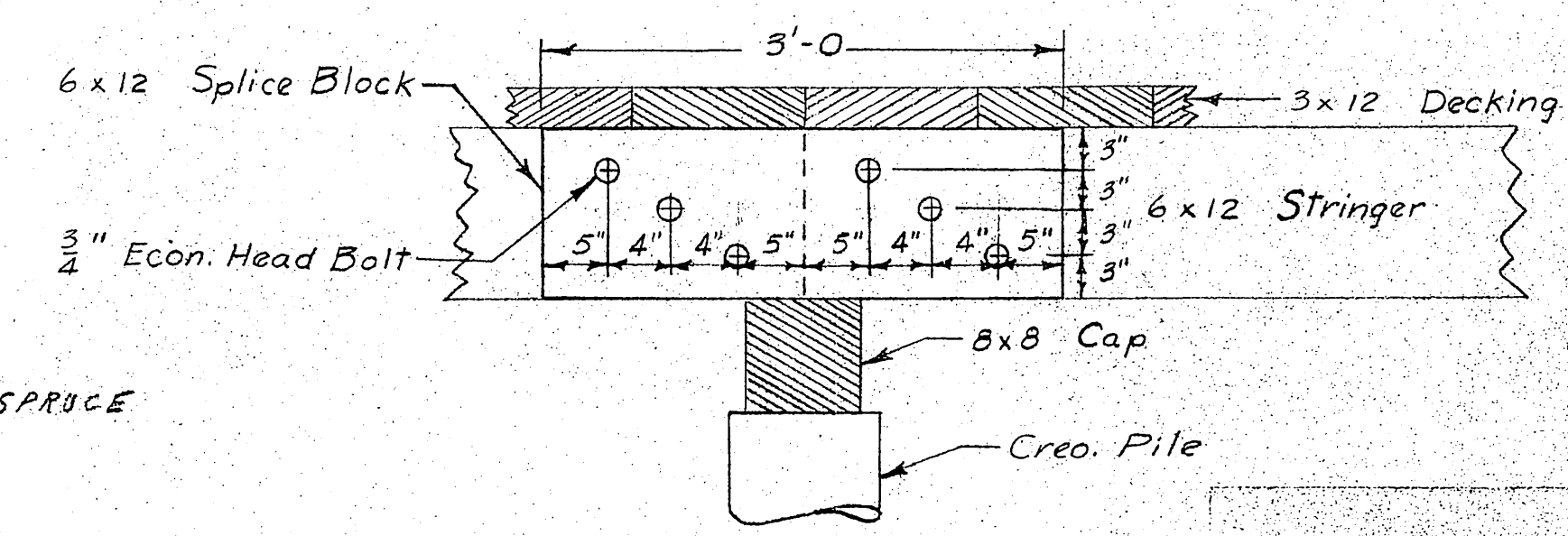
NOTE:
FIELD FIT 6x12 STRINGERS AT ANGLE POINT ON APPROACH WITH 5/8" x 8" x 18" STEEL PLATES, TWO PLATES PER JOINT, SIX 5/8" BOLTS PER JOINT.



BREAKWATER SECTION
1" = 10'

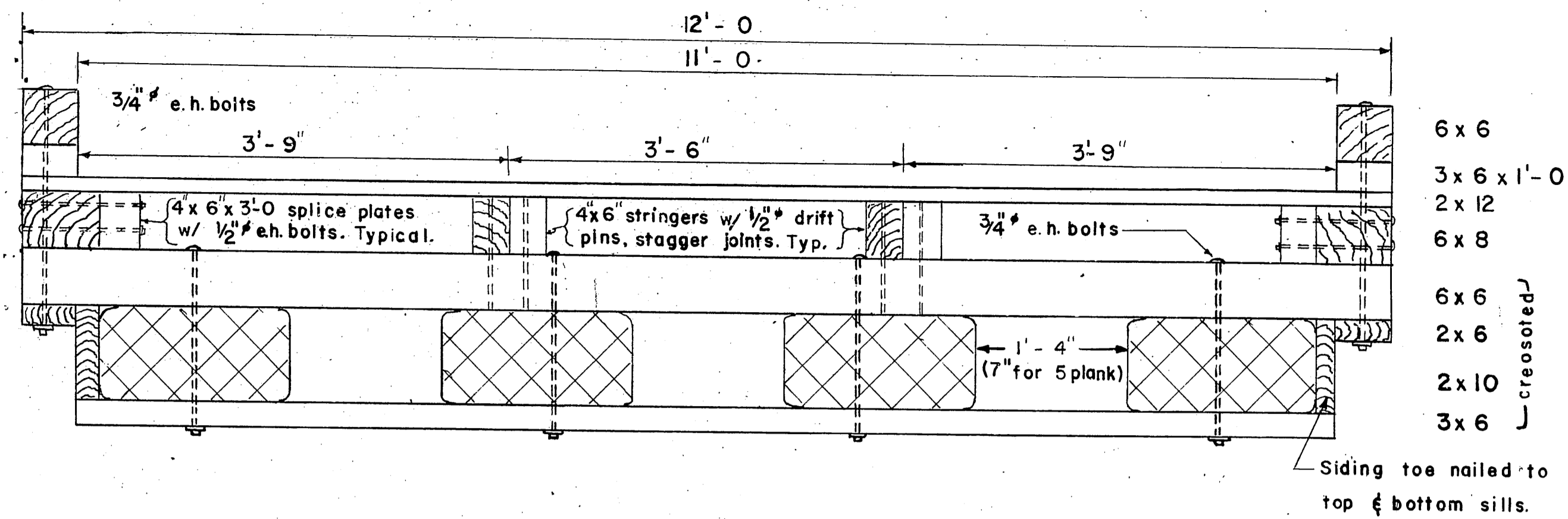
NOTE:
ALL NATIVE TIMBER TO BE DIP-TREATED WITH PRESERVATIVE.
DECKING TO BE SPIKED WITH 60d. GALV. NAILS

HAND RAIL	3x4	S4S	} NATIVE SPRUCE
HAND RAIL POST	4x4	S4S	
GIRT	1x6	S4S	} 8 LB. RETENTION CREO.
DECKING	3x12	S1S	
STRINGERS	4x12 & 6x12	S2E	} 12 LB. RETENTION CREO.
CAP	8x8	S2E	
SWAY BRACING	3x8	ROUGH	} " " "
PILING	CLASS B		



SPLICE BLOCK DETAIL
1" = 1'-0"

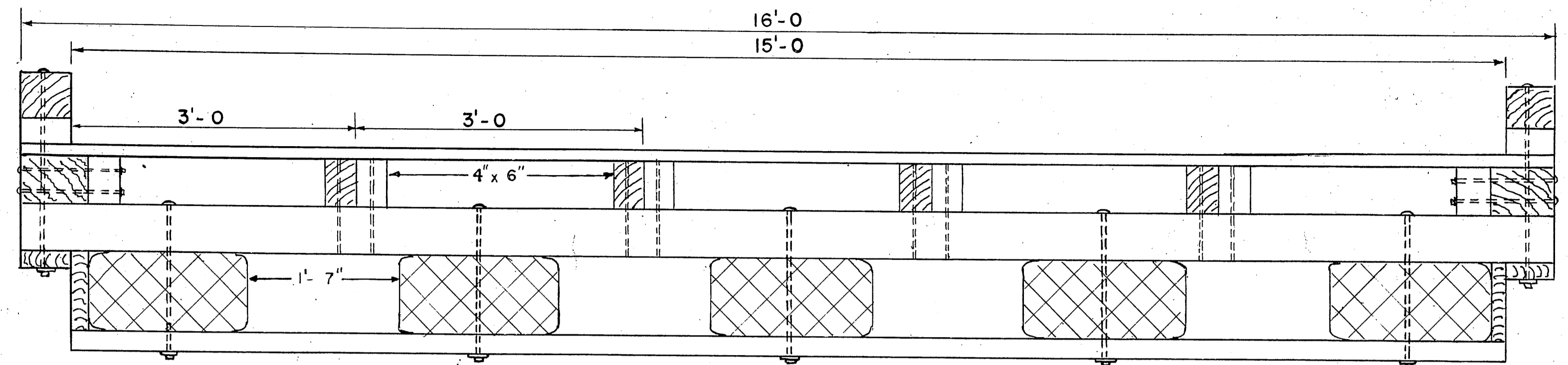
NO.	DATE	REVISION	BY
STATE OF ALASKA ALASKA HIGHWAY AND PUBLIC WORKS DEPARTMENT			
SITKA BOAT HARBOR APPROACH and BREAKWATER			
SCALE	As Shown	APPROVED	
DATE		ALASKA HIGHWAY COMMISSIONER	
FILE NO.		DRAWN BY R.P.P.	CHECKED BY
SURVEYED BY			



12' SECTION

1" = 1'-0"

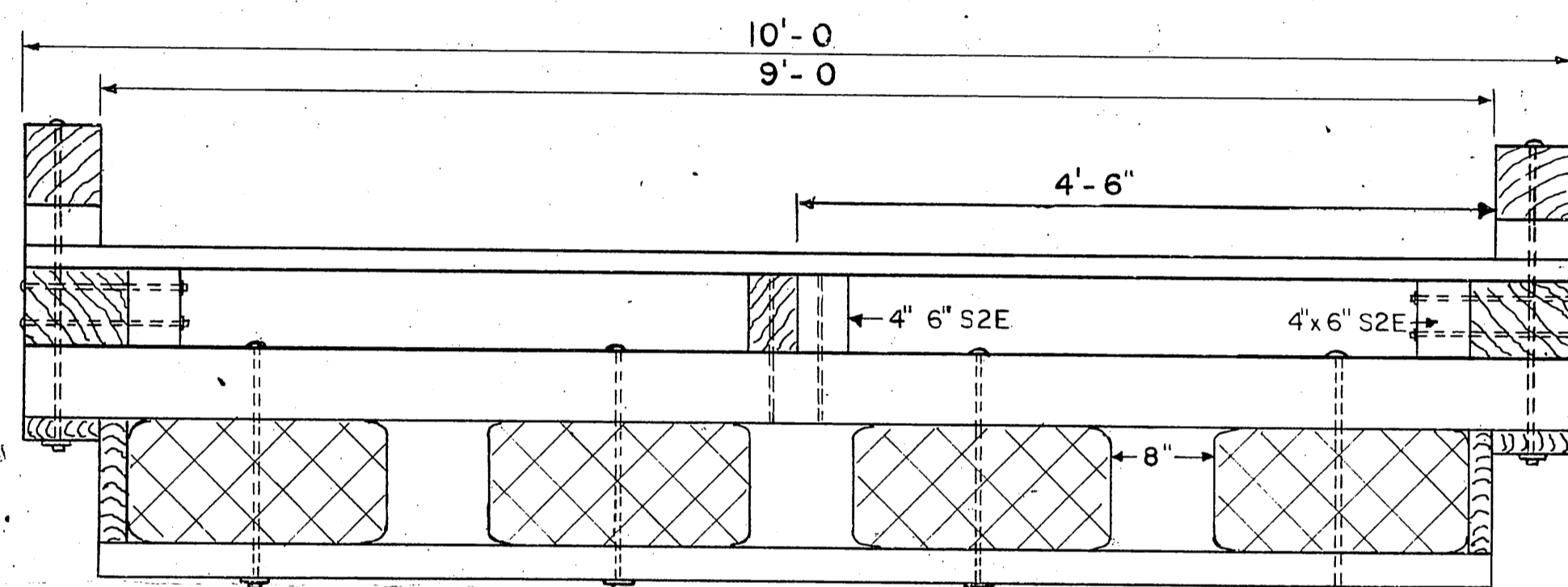
- 6 x 6
 - 3 x 6 x 1'-0
 - 2 x 12
 - 6 x 8
 - 6 x 6
 - 2 x 6
 - 2 x 10
 - 3 x 6
- } creosoted



16' SECTION

1" = 1'-0"

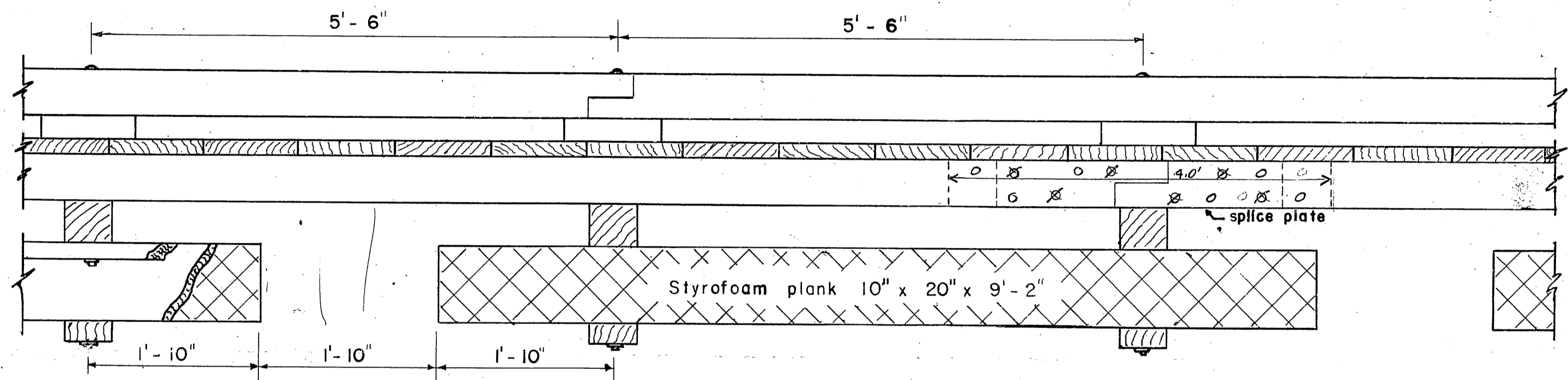
- 6 x 6
 - 3 x 6 x 1'-0
 - 2 x 12
 - 6 x 8
 - 6 x 6
 - 2 x 6
 - 2 x 10
 - 3 x 6
- } creosoted



10' SECTION

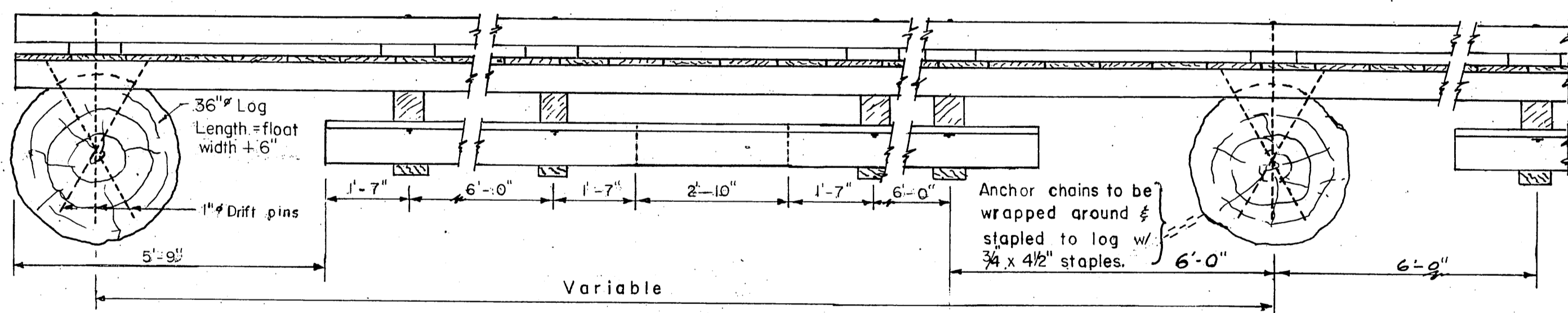
1" = 1'-0"

- | | | | |
|-------|-------|--------------|------------|
| | Heavy | Standard | |
| 6 x 6 | ① | 4 x 6 | Railing |
| | ② | 3 x 6 x 1'-0 | Blocking |
| | ② | 2 x 12 | Decking |
| | ③ | 6 x 8 | Stringers |
| 6 x 6 | ④ | 4 x 6 | Sill |
| | ⑤ | 2 x 6 | Bolt plate |
| | ⑤ | 2 x 10 | Siding |
| 3 x 6 | ⑤ | 2 x 6 | Sill |
- } creosoted



ELEVATION

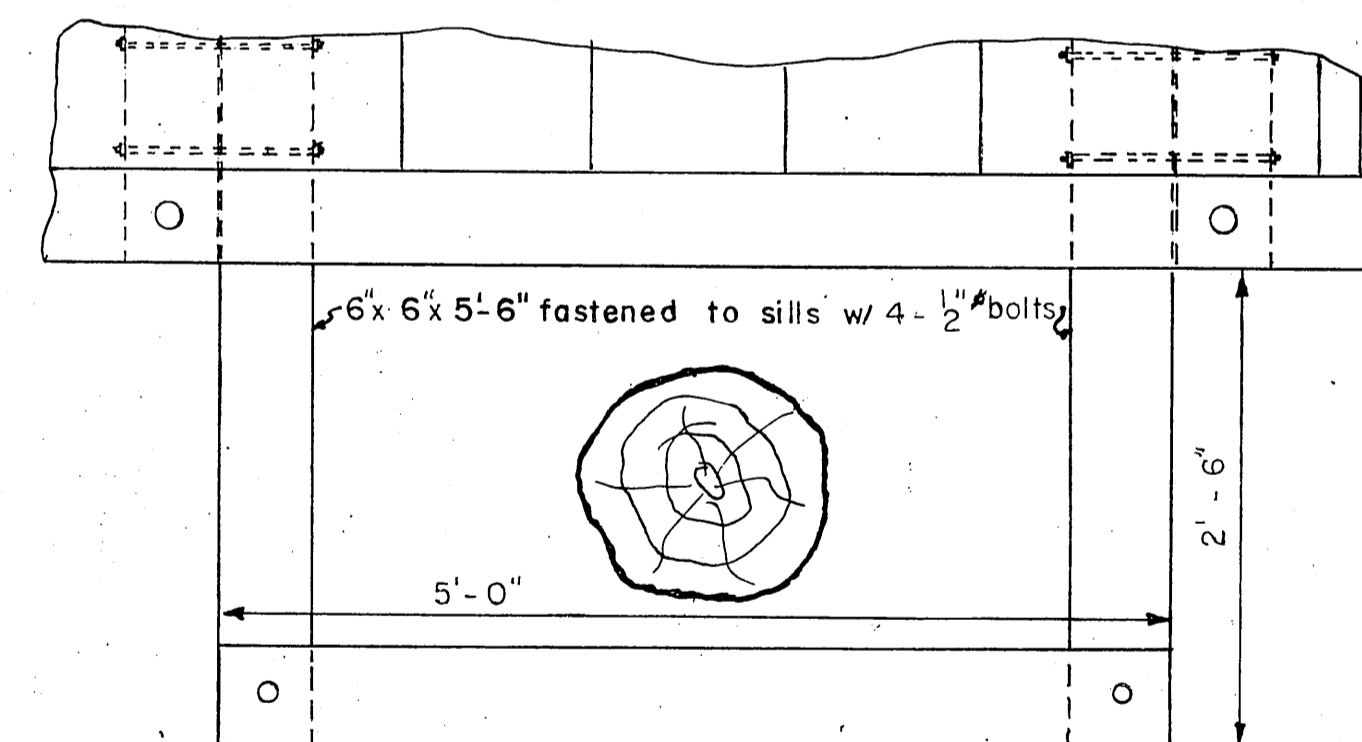
1" = 1'-0"



ANCHORED FLOAT - ELEVATION

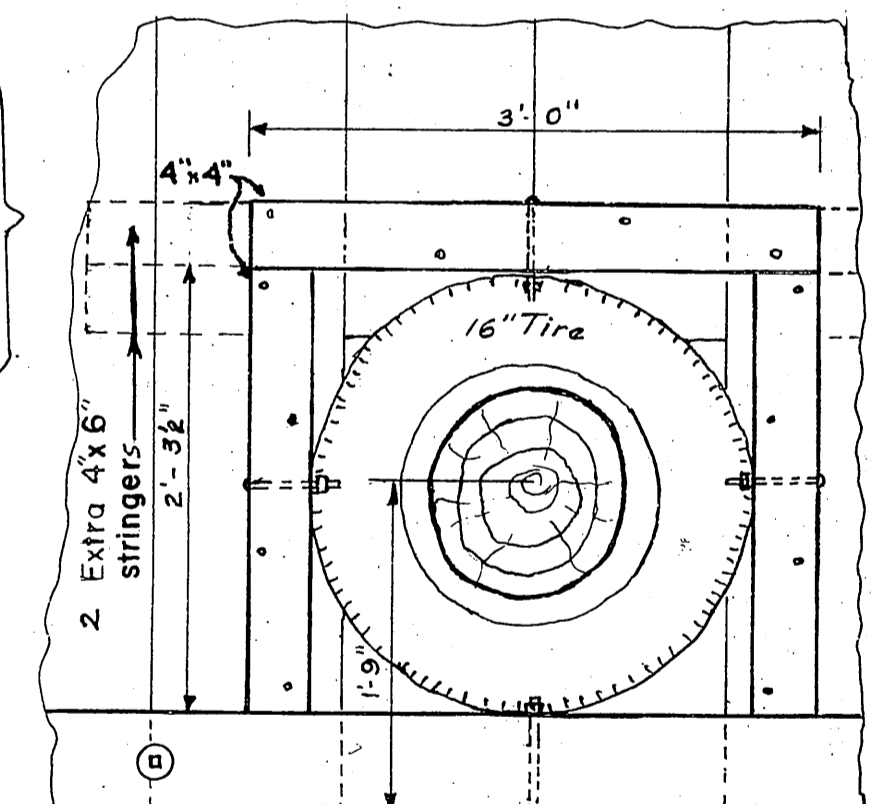
To be used where water depth or penetration prevents the use of piles.

1/2" = 1'-0"



TEMPORARY INSTALLATION

1" = 1'-0"



PERMANENT INSTALLATION

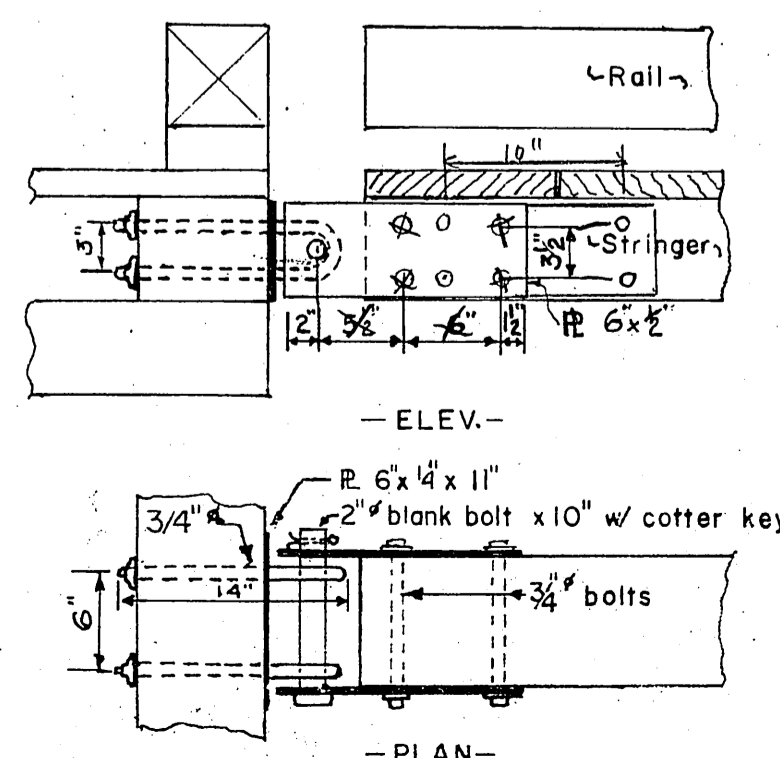
1" = 1'-0"

Piling on one side of float, spacing between piles to be in 11'-0" multiples. Piling fender consists of a 16" tire bolted to 4x4's with 1/2" bolts. Drop over piling and spike 4x4's to decking and 2 extra 4x6 stringer with 3/8x6" lag screws

Piling on both sides of float. Secured with 6x6's, as shown, for temporary mooring.

NOTES

Bottom and top sills, bolt plate and siding to be creosoted fir timbers. Stringers, decking, rail block and tie down rail to be cuprinol-dipped spruce. All hardware to be galvanized. e.h. bolt = economy head bolt. Decking will be secured with two nails to each supporting member placed on alternate sides of each plank.

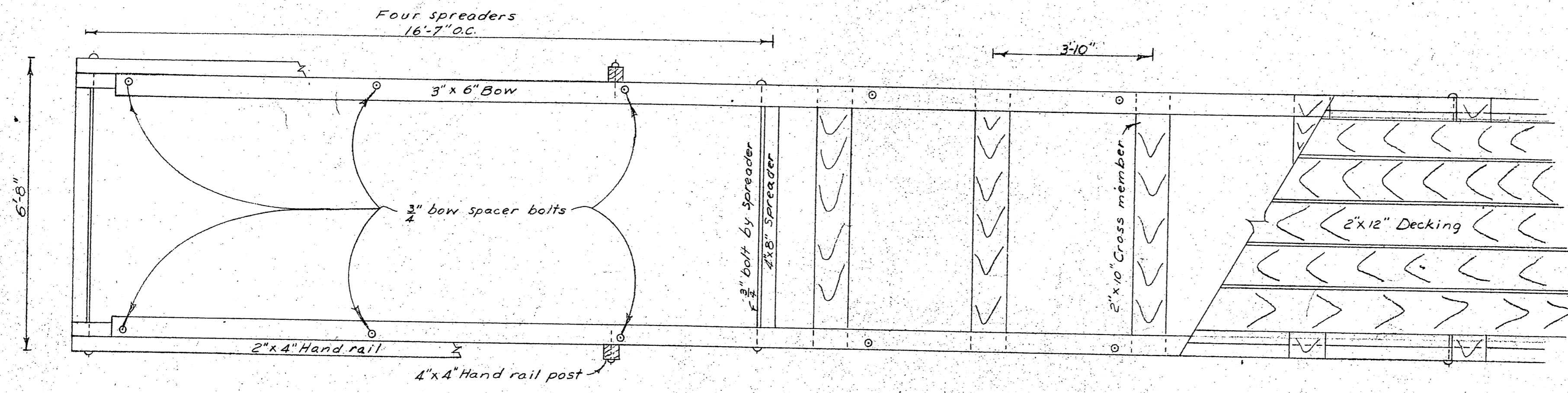


CONNECTION DETAIL
Connecting finger floats at right angles to main float.
1" = 1'-0"

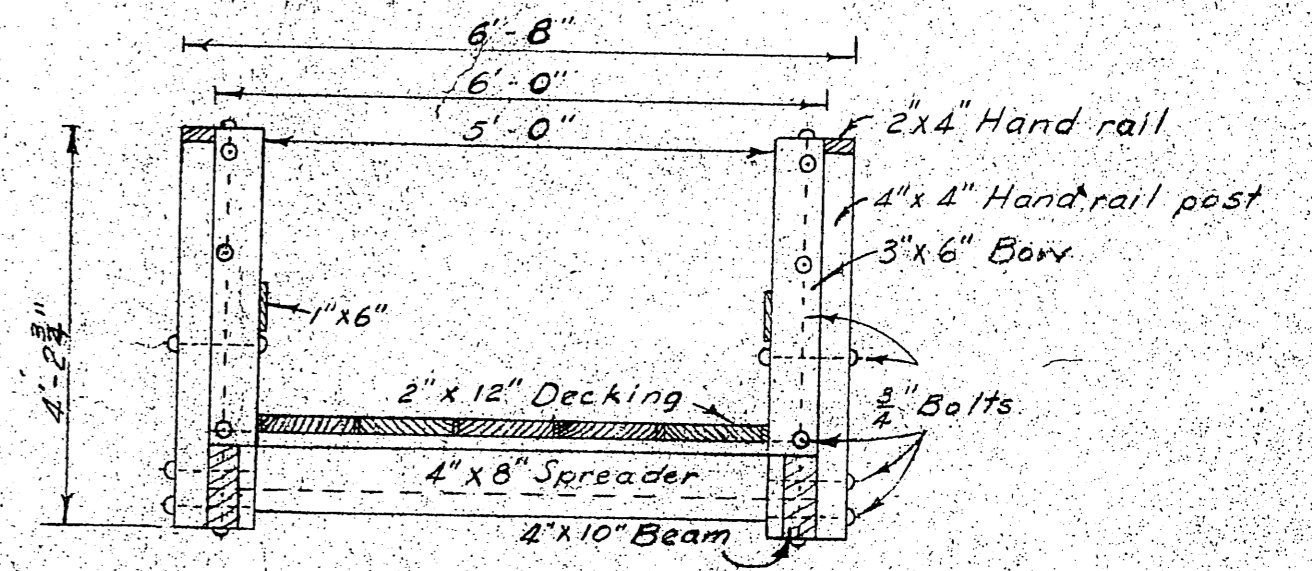
STANDARD GRADING AND DRESSING RULES NO. 15

- ① SELECT MERCHANTABLE ROUGH SPRUCE
- ② CONSTRUCTION ROUGH "
- ③ SELECT MERCHANTABLE S2S "
- ④ SELECT STRUCTURAL S2S FIR
- ⑤ " " ROUGH "

NO.	DATE	REVISION	BY
STATE OF ALASKA ALASKA HIGHWAY AND PUBLIC WORKS DEPARTMENT			
TYPICAL STYROFOAM FLOATS			
SCALE: As Shown	DATE: Feb. 25, 1959	APPROVED: <i>[Signature]</i>	ALASKA HIGHWAY COMMISSIONER
SURVEYED BY:	DRAWN BY: kjh	CHECKED BY:	

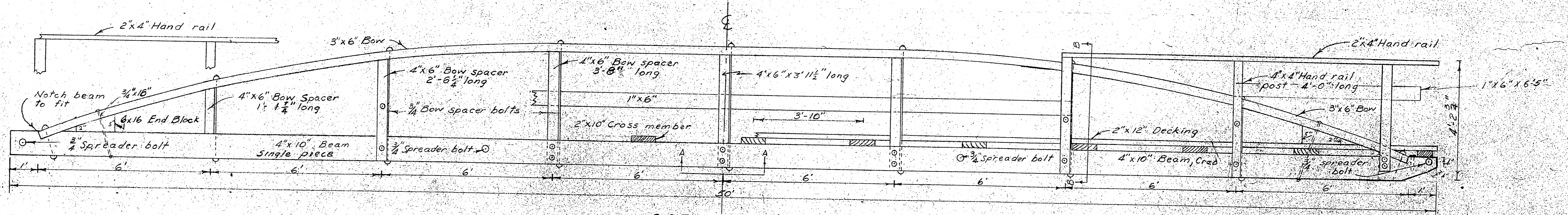


PLAN
1/2" = 1'



SECTION B-B
END ELEVATION
1/2" = 1'

NOTE: (See 22-1-3 drawing)
Paints and interior left side on
the 2" spacing of the 4" spreaders 1/2" T.



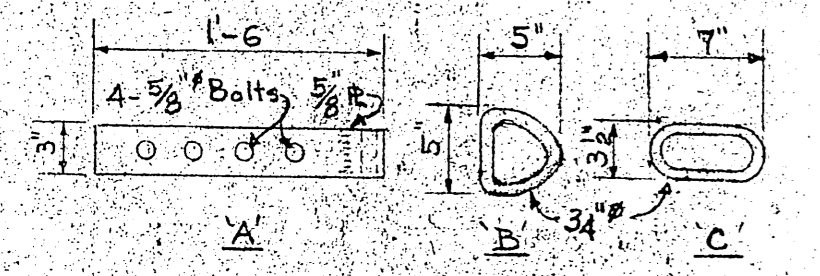
SIDE ELEVATION
1/2" = 1'

NOTE
Gangway cleats to be installed as needed.

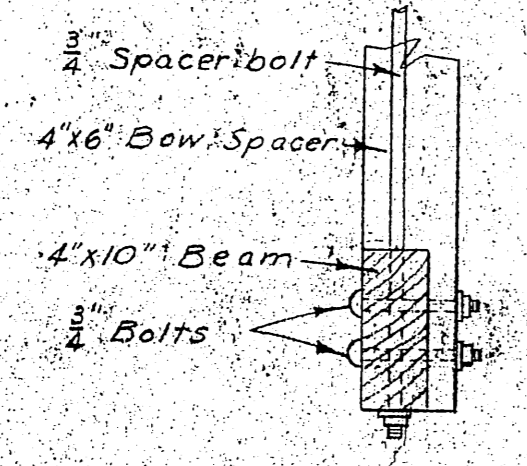
Connection A-A applies only to the three center bow spacers. Remaining bow spacers are flush with top of beam.

All lumber with the exception of the creosoted beams shall be treated with a copper base preservative.

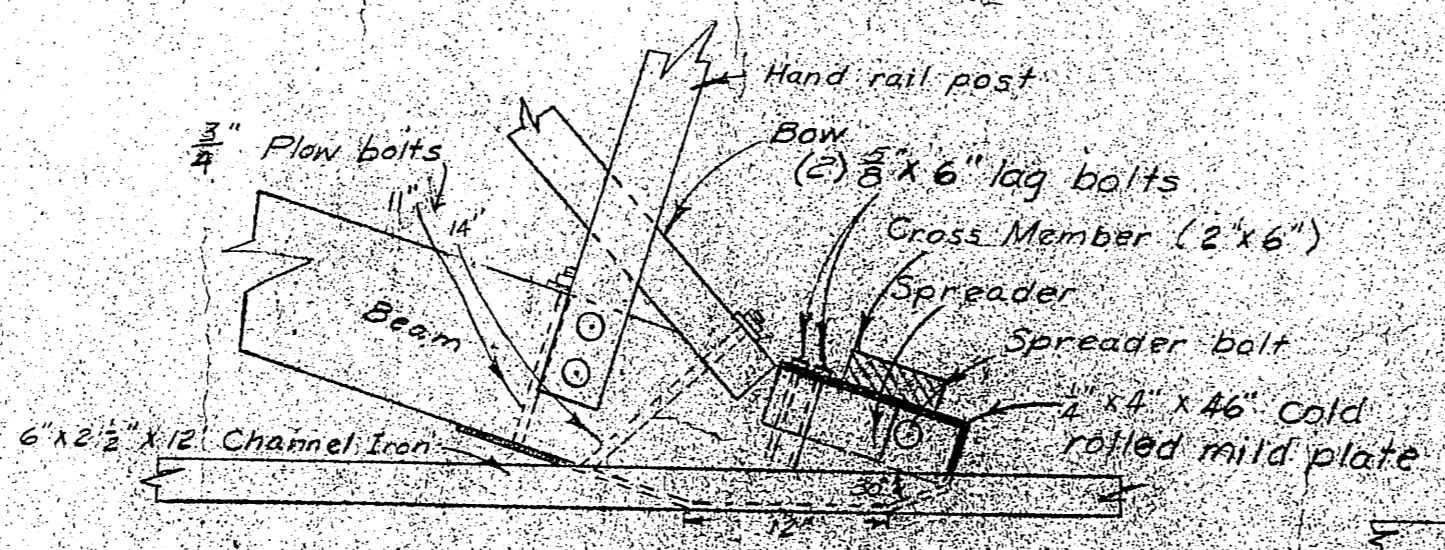
Channel and Plate runners to be securely spiked to decking.
False stringers to be installed directly beneath runners.
Lag bolts to be gimlet pointed.
2" x 6" cross member spiked to beam through holes or slots in 1/4" x 4" shoes.



HANGAR DETAIL
1/2" = 1'

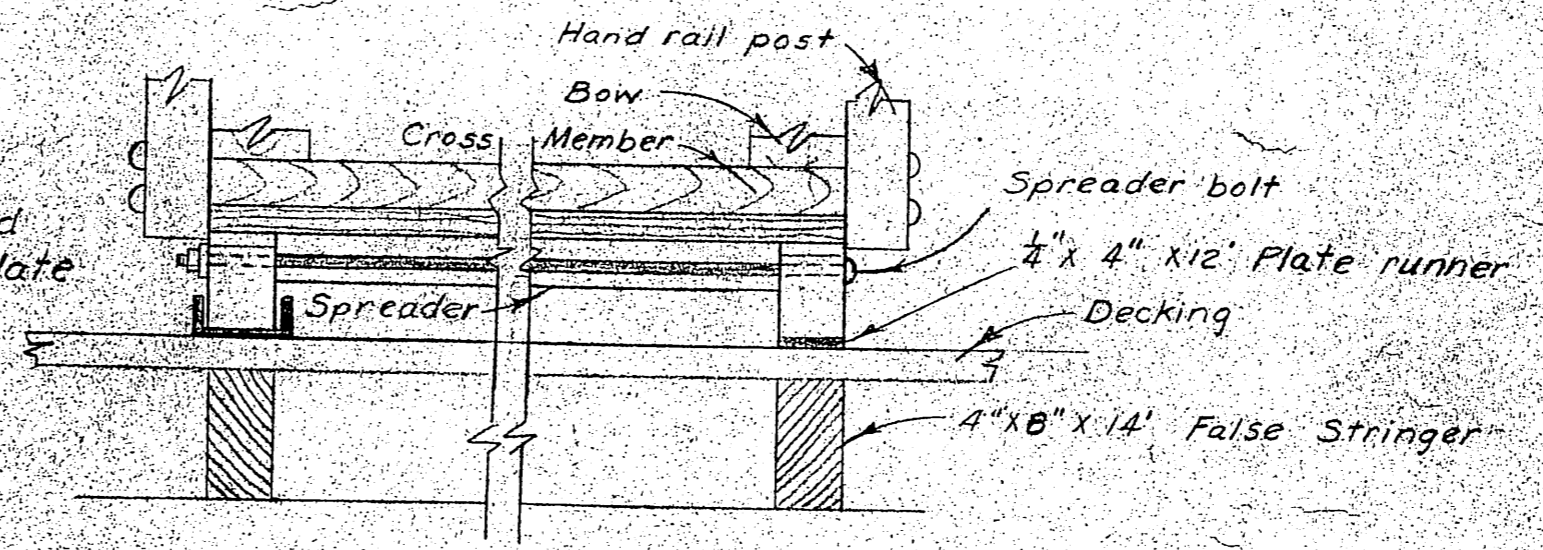


SECTION A-A
BOW SPACER-BEAM CONNECTION
1/2" = 1'



SIDE VIEW

GANGWAY-FLOAT CONNECTION
1/2" = 1'



END VIEW

NO	DATE	REVISION	BY
4	6-24-59	Reduced Gangway Width	WEB
3	6-24-59	Altered Bow Spacer Heights	WEB
2	6-24-59	Added 6x16 End Blocks	WEB
1	12-10-58	Added Hangar Detail	KH

TERRITORY OF ALASKA
ALASKA HIGHWAY AND PUBLIC WORKS DEPARTMENT
DETAIL
FLOAT GANGWAY

SCALE As Shown
DATE October 1958
FILE NO.
APPROVED [Signature]
ALASKA HIGHWAY COMMISSIONER
SURVEYED BY [Signature] DRAWN BY [Signature] CHECKED BY [Signature]