

STATE OF ALASKA
DEPARTMENT OF PUBLIC WORKS
DIVISION OF HIGHWAYS

MICROFILMED
BY: *W. Wilson* DATE: 9-9-66

STATE	PROJECT DESIGNATION	SECTION	YEAR	SHEET NO.
ALASKA	S-0999(3)		1961	1

**PLAN AND PROFILE
PROPOSED HIGHWAY PROJECT**
PROJECT NO. S-0999(3)
**SKAGWAY - CARCROSS HIGHWAY
GRADING & DRAINAGE**

INDEX OF SHEETS

SHEET NO.	DESCRIPTION
1	TITLE SHEET
2	TYPICAL SECTION & ESTIMATE OF QUANTITIES
3-4	PLAN AND PROFILE SHEETS
5	CULVERTS & MISCELLANEOUS WORK
S-1	STANDARD CULVERTS
S-5	STANDARD BARRICADE
S-6	STANDARD PROJECT IDENTIFICATION SIGN
S-7	TYPICAL SIGNS

TYPE O011 IMPROVEMENT

Field reports of the foundation soils and the type of materials found in the listed pits for this project are available for inspection in the Dept. of Public Works, Division of Highways, Road Design Office in Juneau.
Detail cross sections for this project are available for inspection in the Road Design office in Juneau.

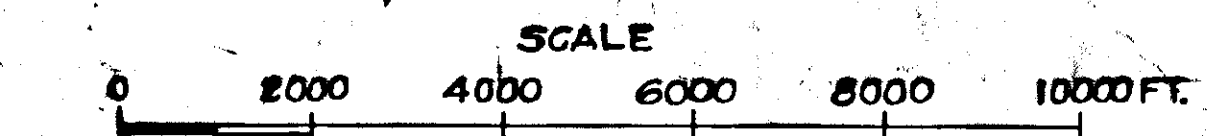
Design Designation

ADT (1960)	= 70
ADT (1980)	= 140
DHV	= 28
D	= 65%
T	= 5%
V	= 45MPH

BEGINNING OF PROJECT
STA. "0" 159+50
157+50

END OF PROJECT
STA. "0" 194+65
56.7

- Oil Tanks
- CONVENTIONAL SIGNS
- SECTION LINE
- CULVERT
- UTILITY POLE
- "P" LINE
- LINE TO BE CONSTRUCTED
- MILE POST
- RIGHT OF WAY LINE
- TRAVELED WAY
- PROPOSED FUTURE ROUTE



PROJECT SUMMARY

WIDTH OF SUBGRADE	28'
LENGTH OF GRADING	3,515.00' = .666 MI.
LENGTH OF PROJECT	3,515.00' = .666 MI.

3,711.4' - 0.703 MI.
3,711.4' - 0.703 MI.

Contractor: *Shook & Grove, Inc.*
Project Engineer: *R.M. Lowe Jr.*
Project started: *July 12, 1961*, Completed: *Jun. 26, 1962*

As Built revisions by *R.M. Lowe Jr.*
Checked by: *G.H. Jones*
As Built revisions entered on plans 12/62
Backchecked, *R. Bowler* 1/63

APPROVED
J. B. Sherald Date 5/12
DIRECTOR, DIVISION OF HIGHWAYS

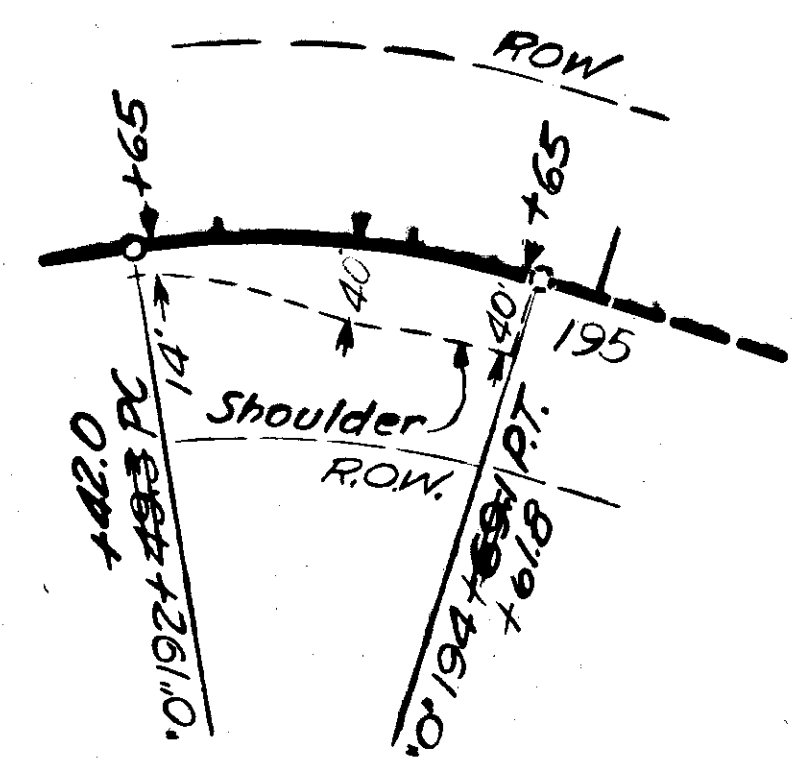
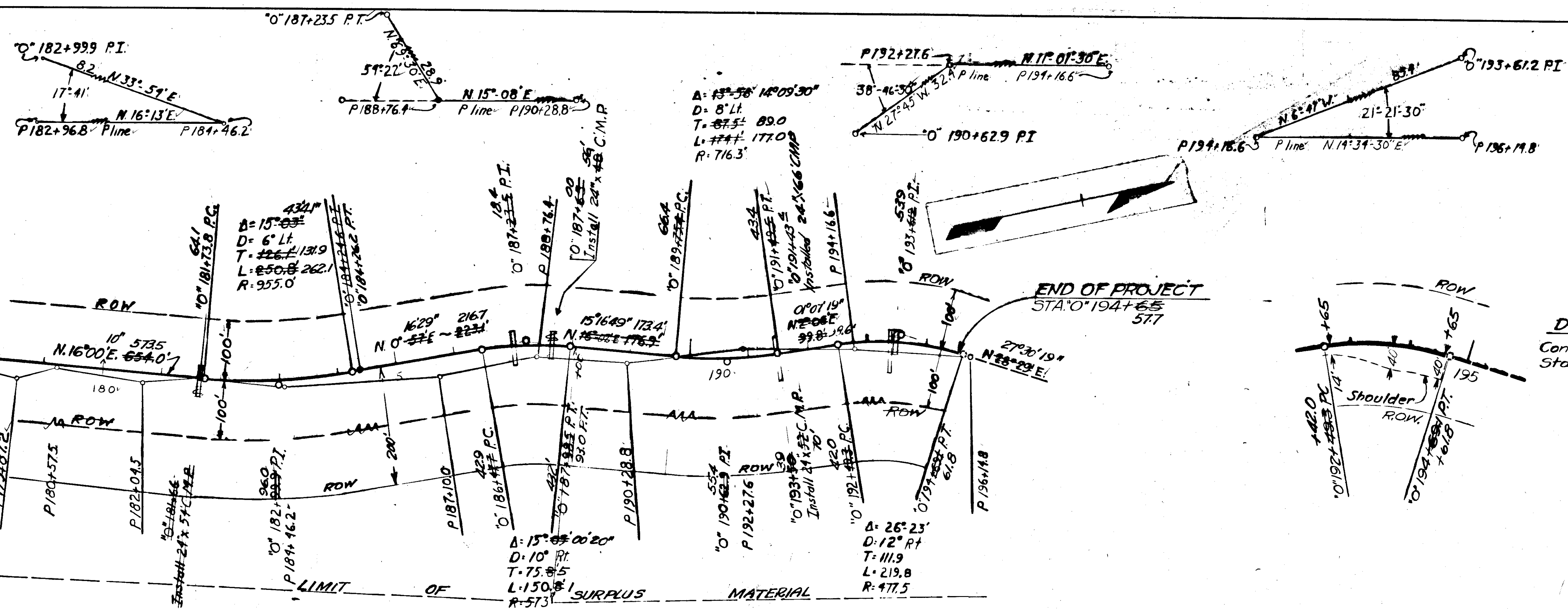
APPROVED
REGIONAL ENGINEER
BUREAU OF PUBLIC ROADS
REGION TEN

CANADA
UNITED STATES

STATE OF ALASKA
DEPT. OF PUBLIC WORKS
DIVISION OF HIGHWAYS

STATE	PROJ. DES.	SECTION	YEAR	SHEET NO.
ALASKA	S-0999(3)		1961	4

AS BUILT
MICROFILMED
 Withrow DATE: P-P-66



DETAIL OF TURN-AROUND
 Construct Turn-around
 Sta. 0+192+65 - 194+65 Ft.

Excavation	Cu. Yd.	35,213.7
Embankment	Cu. Yd.	36,089
Borrow	Cu. Yd.	2,641
Overhaul	Yd. Mi.	
O.H. Borrow	Yd. Mi.	

Excess excavation to be deposited uniformly on right side

