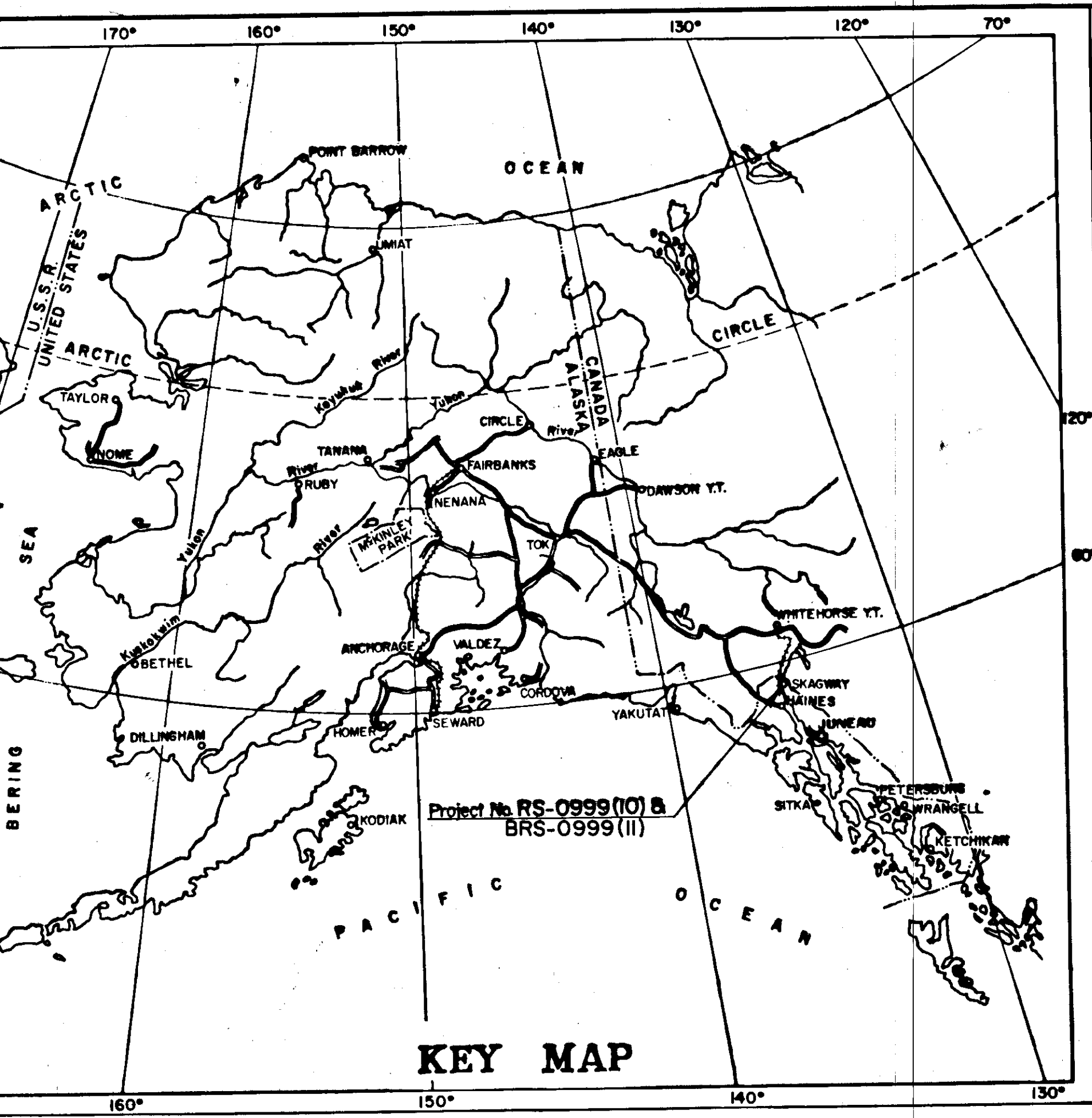


STATE	PROJECT DESIGNATION	YEAR	SHEET NO.	TOTAL SHEETS
ALASKA	BRS-0999 (10) RS-0999 (11)	1973	1	16



**STATE OF ALASKA  
DEPARTMENT OF HIGHWAYS**

**PLAN AND PROFILE  
PROPOSED HIGHWAY PROJECT**

**BRS-0999 (10) &  
RS-0999 (11)  
SKAGWAY RIVER BRIDGE  
& GRADING**

AS BUILT PLANS  
CONTRACTOR: CLIMCO CONSTRUCTORS, INC.  
PROJECT ENGINEER: VERN V. HIRSCH, P.E.

INDEX OF SHEETS

SHEET NO.	DESCRIPTION
1	TITLE SHEET
2	TYPICAL SECTION, SUMMARY TABLES & MISC. DETAILS
3	ESTIMATE OF QUANTITIES
4, 5, 6	PLAN & PROFILE
7	GENERAL LAYOUT
8	FOUNDATION PLAN
9	ABUTMENTS
10	PIERS
11	TYPICAL SECTION
12	GIRDERS
13	PILING & BEARINGS
14	RAILING
15	PERMANENT FORMS FOR BRIDGES
16	LOG OF TEST BORINGS

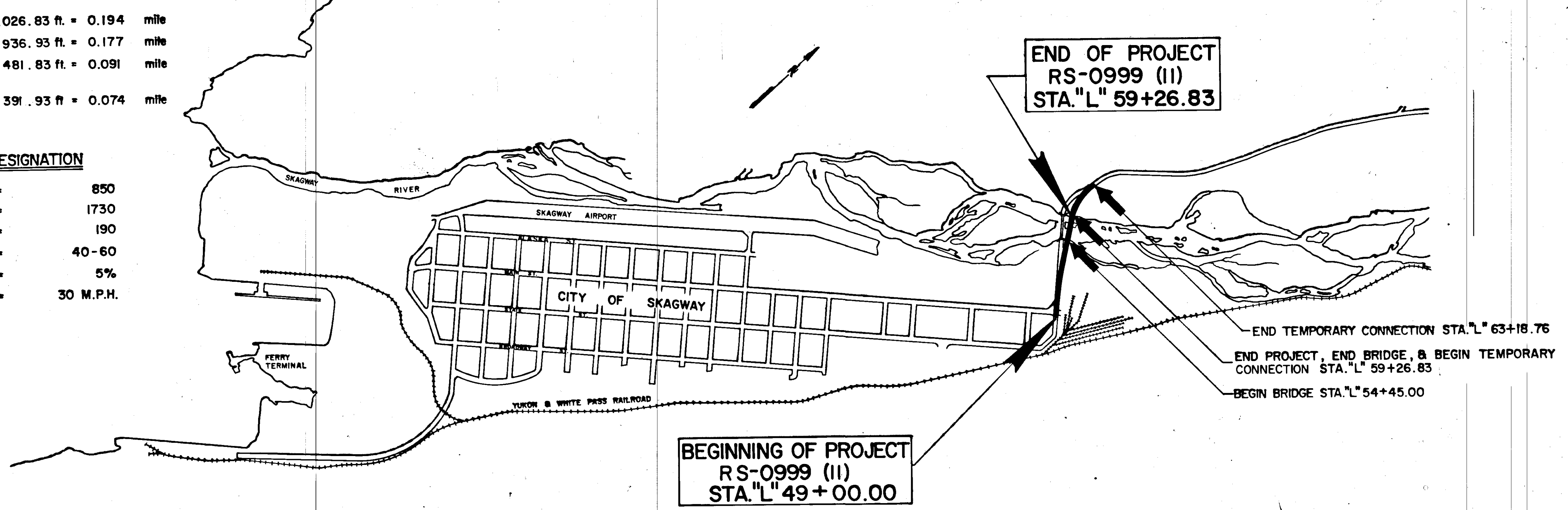
**PROJECT SUMMARY**

LENGTH of PROJECT	1,026.83 ft. = 0.194 mile
LENGTH of GRADING	936.93 ft. = 0.177 mile
LENGTH of BRIDGE	481.83 ft. = 0.091 mile
LENGTH of TEMPORARY CONNECTION	391.93 ft. = 0.074 mile

**DESIGN DESIGNATION**

ADT (1972)	=	850
ADT (1995)	=	1730
DHV (11%)	=	190
D	=	40-60
T	=	5%
V	=	30 M.P.H.

CONSTRUCTED MARCH 28, 1974 TO JUNE 30, 1975



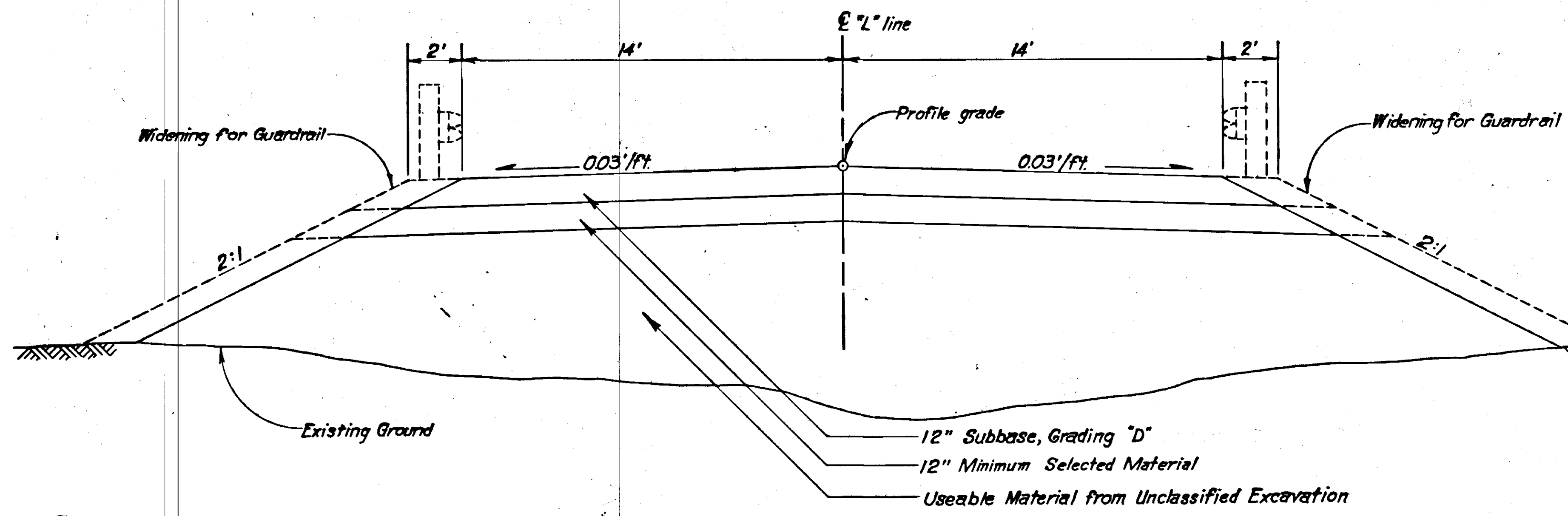
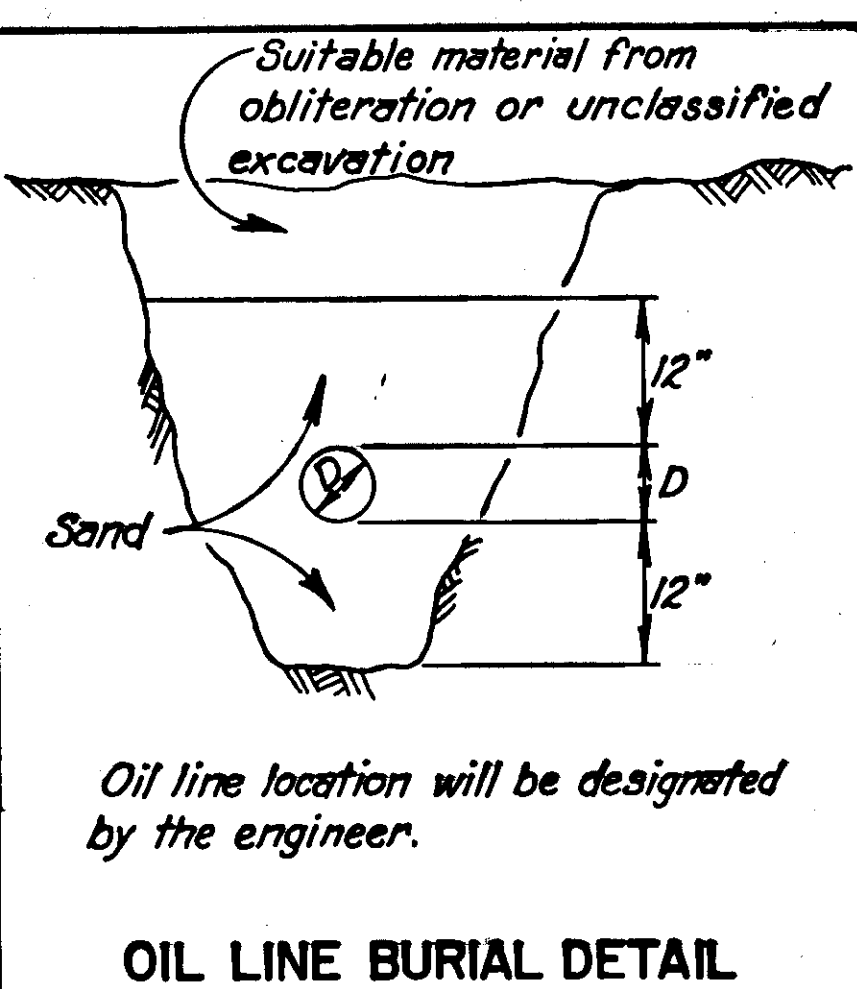
The following standard drawings apply to this project: A-1, C-00.00, C-10.00, C-11.00, G-04.00, G-10.00, G-30.00, I-40.00, I-80.00, M-16.00, S-00.00, S-05.00, S-30.00, S-34.00

STATE OF ALASKA  
DEPARTMENT OF HIGHWAYS

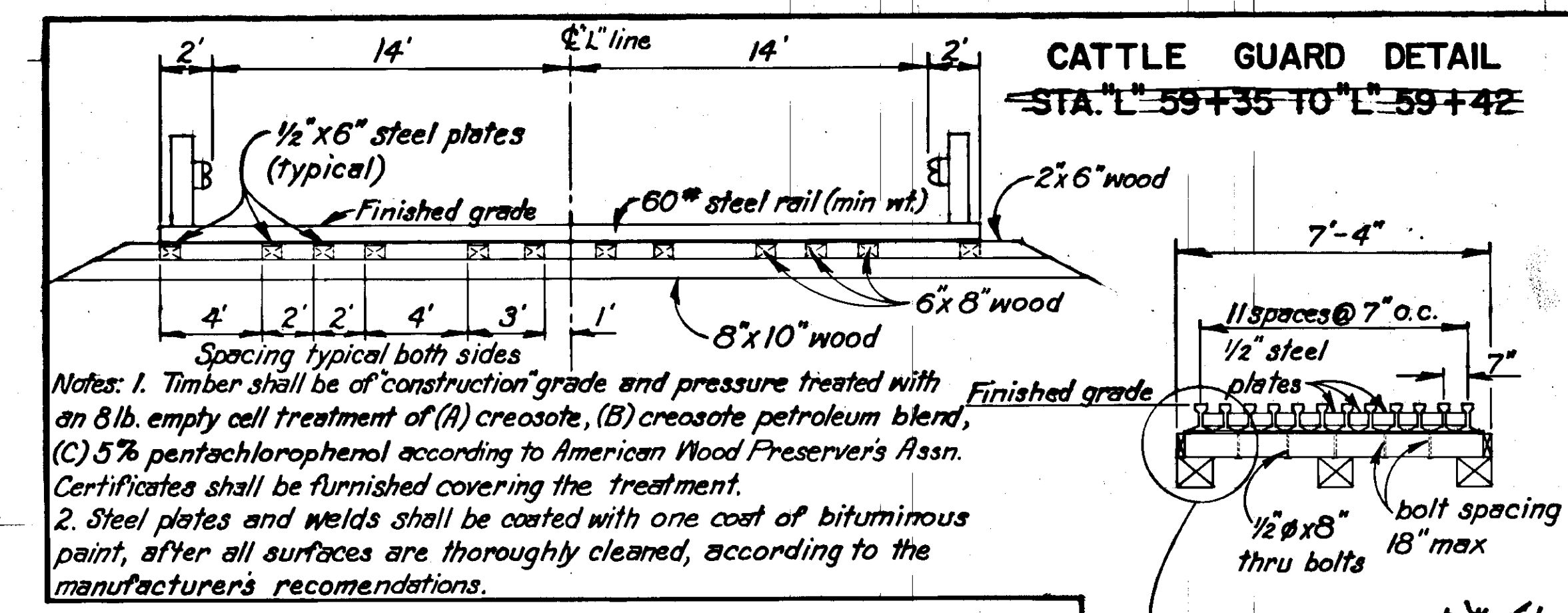
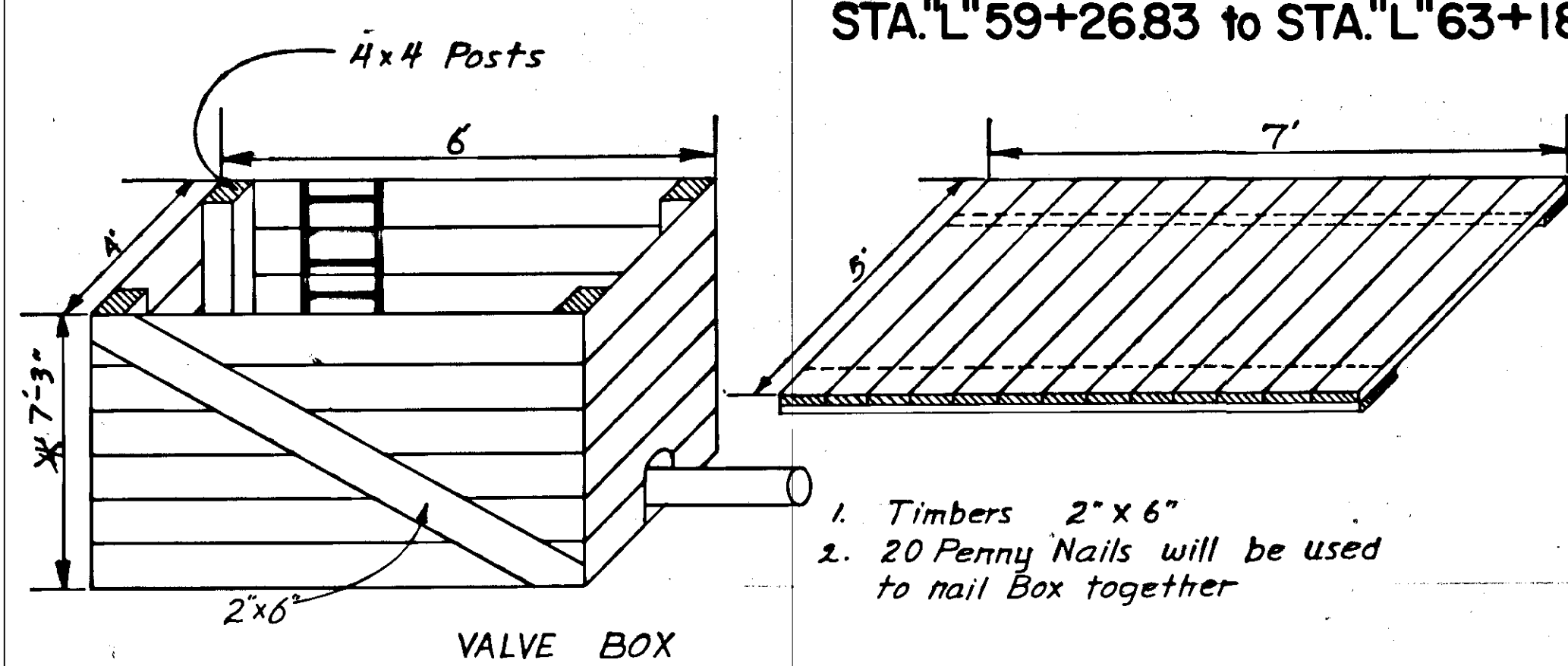
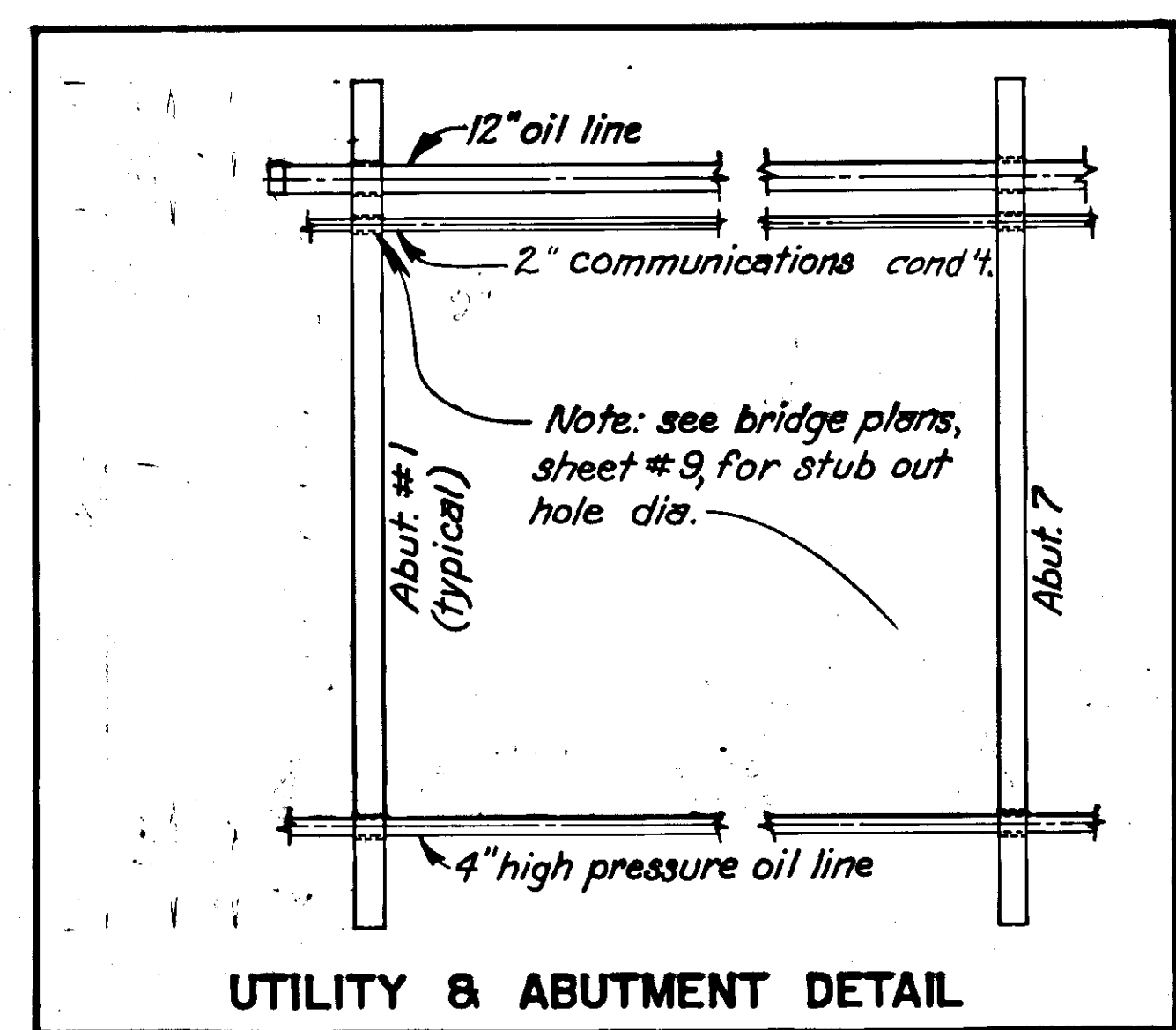
APPROVED:

*Harold E. Miel* Date 7/26/73  
SOUTHEASTERN DISTRICT ENGINEER

*Stanbell* Date 10/10/73  
COMMISSIONER OF HIGHWAYS



- General Notes:**
- Grades & alignment are subject to minor revisions.
  - Clearing & grubbing limits shall be 15' beyond the slope limits or to the R/W whichever is less.
  - All existing signs shall be removed by others.
  - Superelevations are rotated about E & have 100' transitions.
  - Obliterated area shall be graded to drain.
  - Fill the depression (approx. Sta. 59+50 to 62+00) between Rt. toe of slope and existing dike with excess material from roadway obliteration.



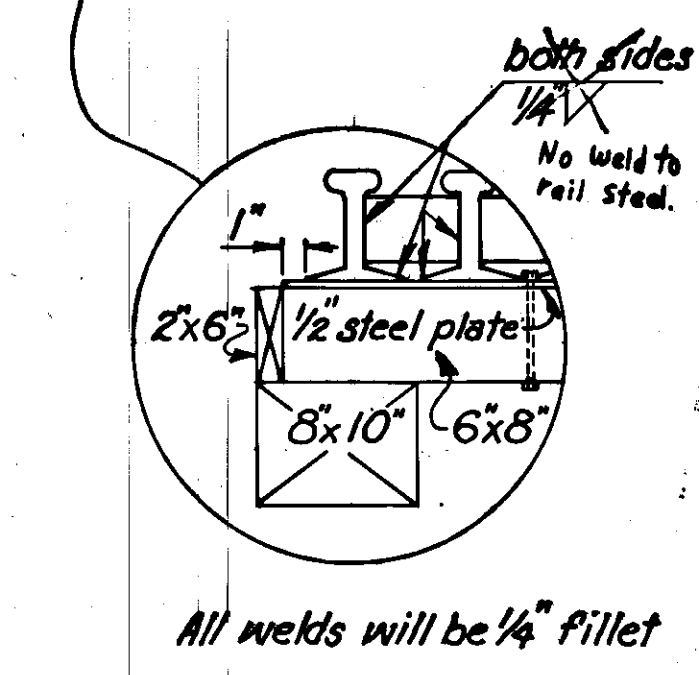
GUARDRAIL SUMMARY			
From		To	
Station	Offset	Station	Offset
"L" 53+70	18.25' Rt.	"L" 54+45	14' Rt.
"L" 53+95	16.25' Lt.	"L" 54+45	14' Lt.
"L" 59+26.83	14' Rt.	"L" 61+01.83	14' Rt.
"L" 59+26.83	14' Lt.	"L" 60+01.83	18.25' Lt.

MONUMENT SUMMARY				
Station	Location	Point	Monument	Cases
"L" 49+00.00	E	POT (EQP)	+	+
"L" 50+00.00	E	P.C.	1	
"L" 51+29.48	5' Lt. of E	P.I.	1	1
"L" 52+58.56	E	P.T.	+	
"L" 54+45.00	E	P.O.T.	1	
"L" 59+26.83	E	POT (EQP)	1	

SUPERELEVATION TABLE						
Begin Transition	Begin Full Super	End Full Super	End Transition	Rate	Dir.	
"L" 49+33.33	"L" 50+33.33	"L" 52+25.23	"L" 53+25.23	.03	Rt.	
"L" 58+45.91	"L" 60+17.95	"L" 62+18.76	"L" 63+18.76	.059	Rt.	

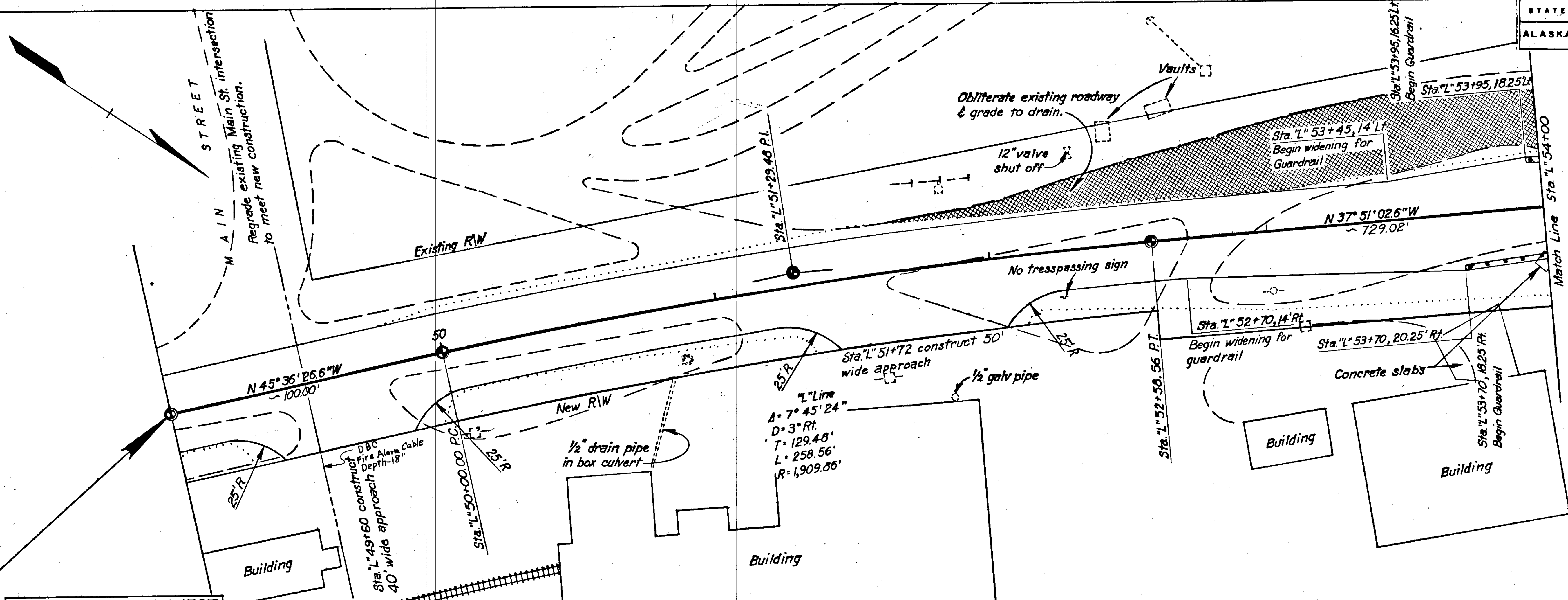
SIGNING SUMMARY								
Station	Offset from E	Code No.	Legend	Area sq. ft.	Facing traffic	Post Dia.	Embedment Lgth.	Remarks
"L" 54+45.00	20' Rt.	T1-1	Skagway River	8.79	NB	2" 14ga.	5'-0"	See note 1,3
"L" 59+26.83	20' Lt.	T1-1	Skagway River	8.79	SB	2" 14ga.	5'-0"	See note 1,3
"L" 64+93.76	20' Lt.	W1-2L	900	6.25	SB	2" 15'0"	5'-0"	See note 2
"L" 65+19	20' Lt.	W13-1	30 M.P.H.	4.0	S.B.	2" 15'0"	5'-0"	See Note 2
"L" 57+67	20' Rt.	W1-2R		4.0	NB	2" 13'0"		See Note 7
"L" 57+67	20' Rt.	W12-1	30 MPH	4.0	NB			
		13						

- Notes:**
- All posts shall be 2" perforated galvanized steel tubing, 12 ga.. See Standard Drawing S-00.00.
  - Located 175' beyond end of temporary connection.
  - Requires 2 post per sign, 32" spacing.
  - All sign thickness shall be .080 in., as indicated in Standard Drawing S-00.00
  - Letters shall be 6" U.C., 4 1/2" L.C.
  - Sign locations are approximate and shall be located by the Engineer.
  - Mount on Guardrail Post-2-3/8" x 3" galv. bolts with nuts & washers
- Sign dimensions:**
- T1-1 = 52.6" x 24"  
 W1-2R = 36" x 36"  
 W1-2L = 36" x 36"  
 W13-1 = 24" x 24"





STATE	PROJECT DESIGNATION	YEAR	SHEET NO.	TOTAL SHEETS
ALASKA	BRS-0999 (10) RS-0999 (11)	1973	4	16

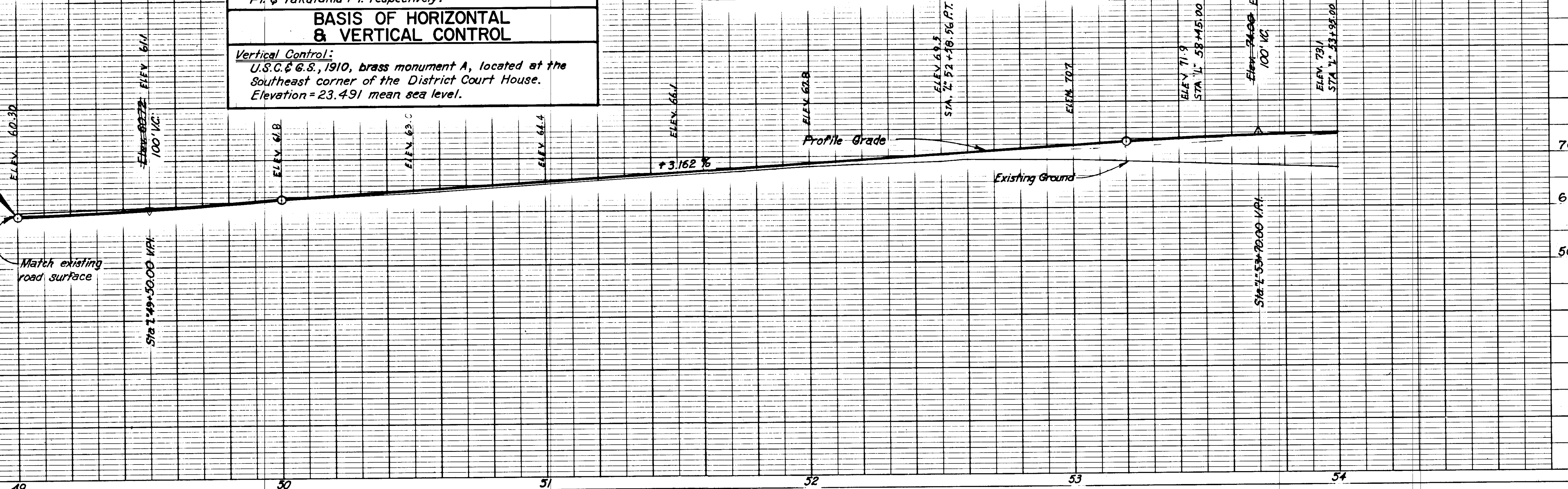


**BEGINNING OF PROJECT  
RS-0999 (II)  
STA. "L" 49+00**

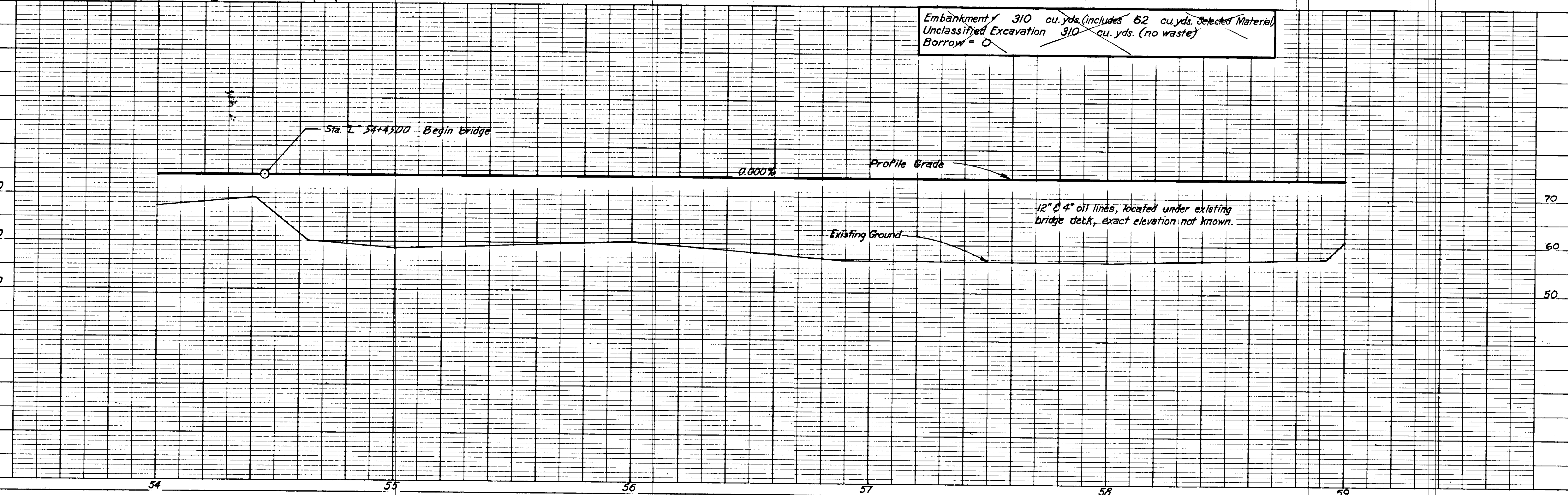
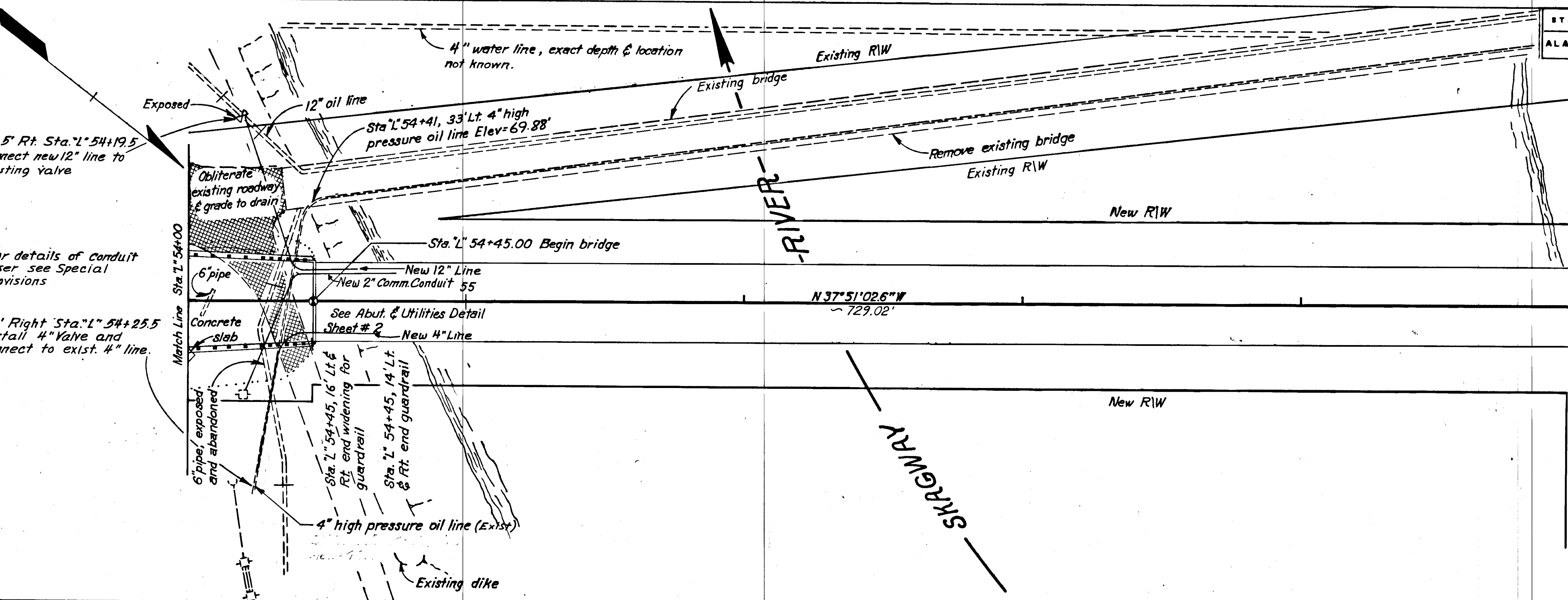
**Horizontal Control:**  
Bearing base is taken as  $S 23^{\circ} 28' 13.9'' E$  between U.S.C. & G.S. monuments "Long" & "Sharp" located Dyea Pt. & Yakutania Pt. respectively.

**Vertical Control:**  
U.S.C. & G.S., 1910, brass monument A, located at the Southeast corner of the District Court House. Elevation = 23.491 mean sea level.

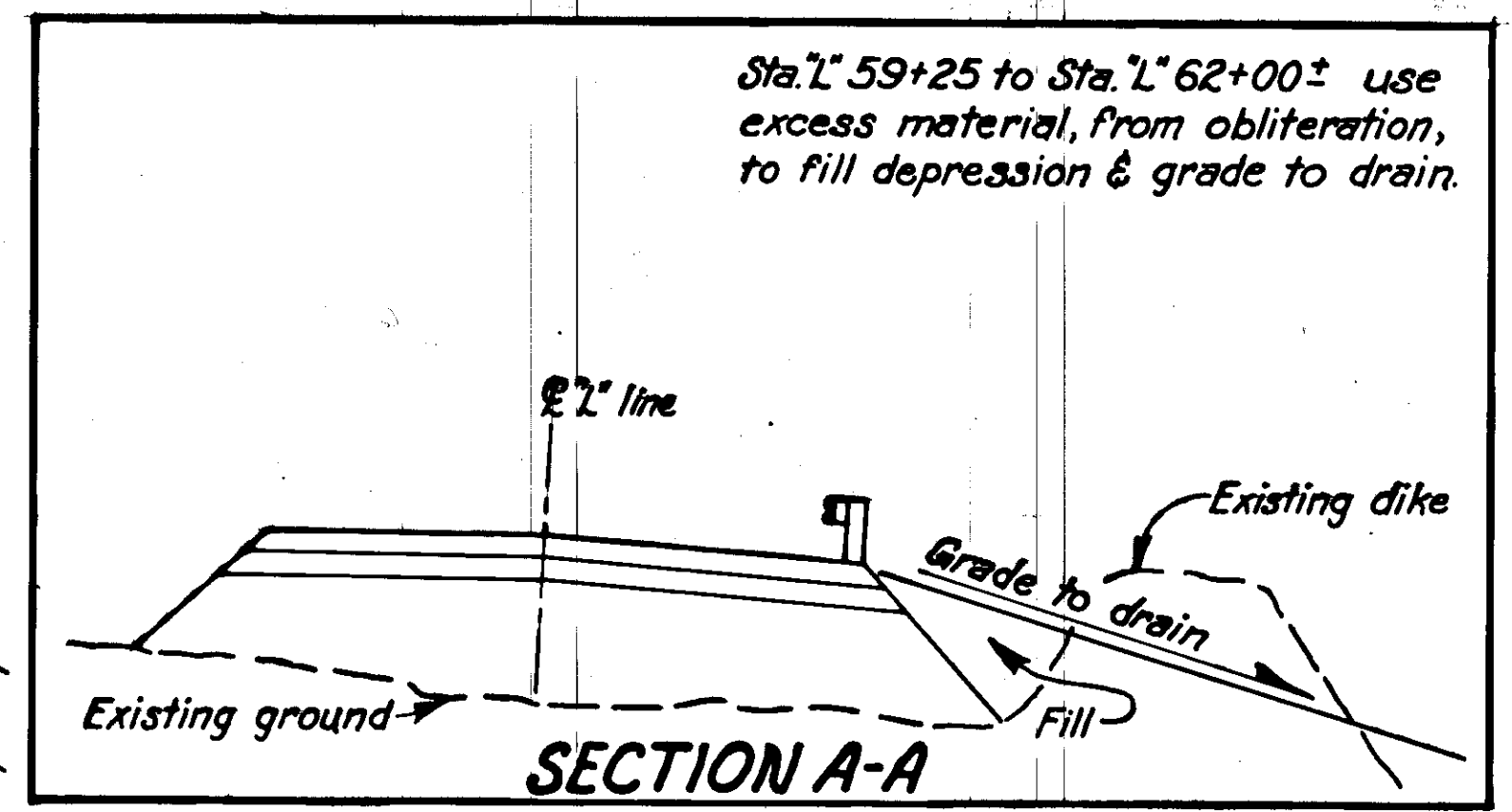
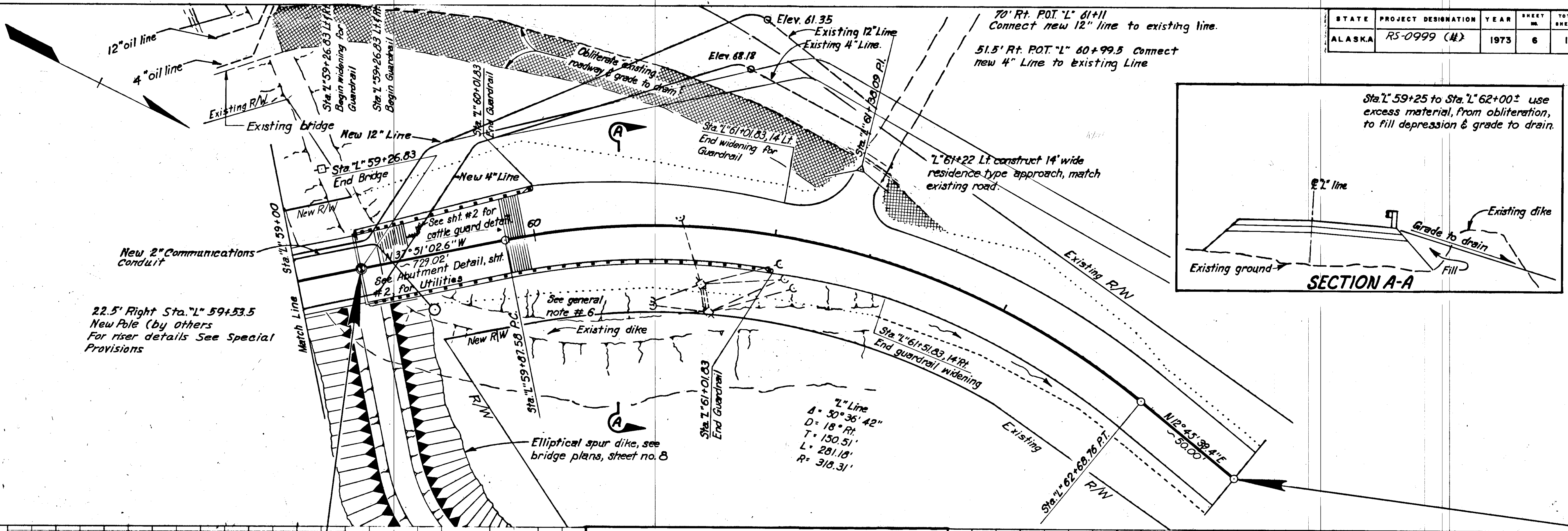
Embankment = (Excavation)  
Embankment = 1,111 cu. yds. (includes 535 cu. yds. Selected Material)  
Unclassified Excavation = 1,111 cu. yds. (no waste)  
Borrow = 0



STATE	PROJECT DESIGNATION	YEAR	SHEET NO.	TOTAL SHEETS
ALASKA	BRS-0999 (10) RS-0999 (11)	1973	5	16



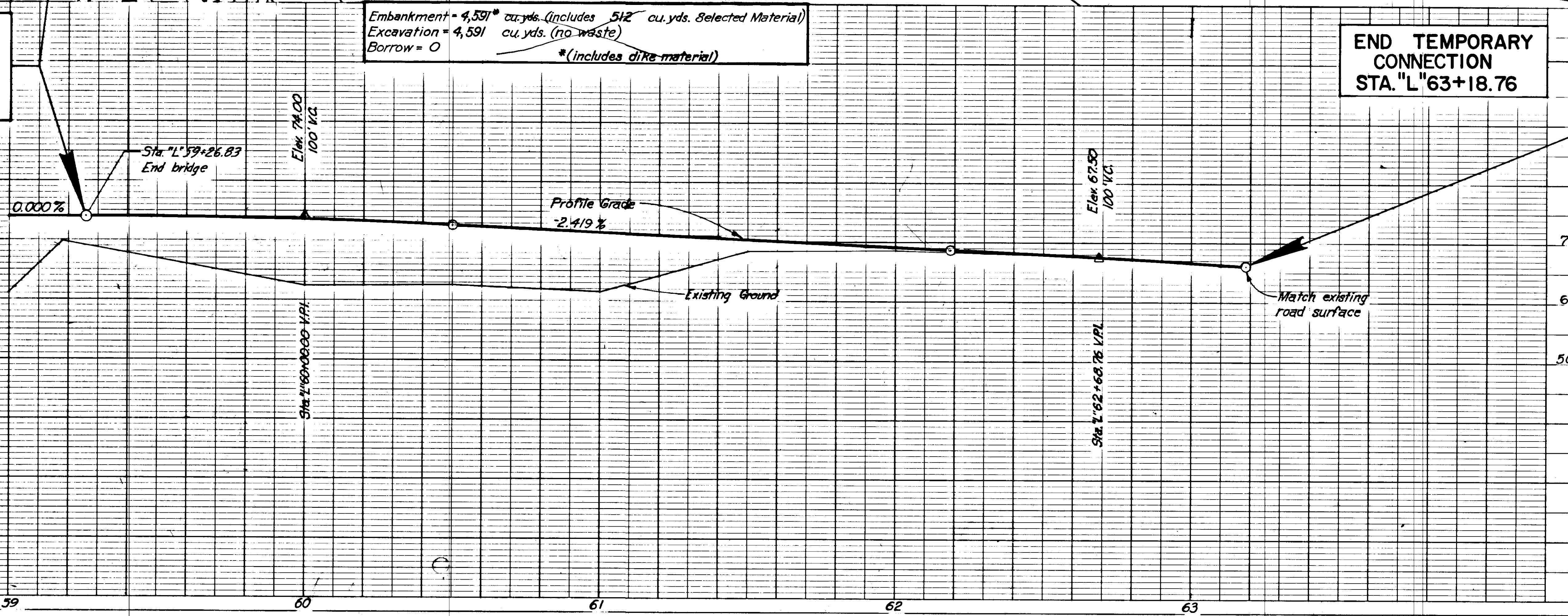
STATE	PROJECT DESIGNATION	YEAR	SHEET NO.	TOTAL SHEETS
ALASKA	RS-0999 (II)	1973	6	16

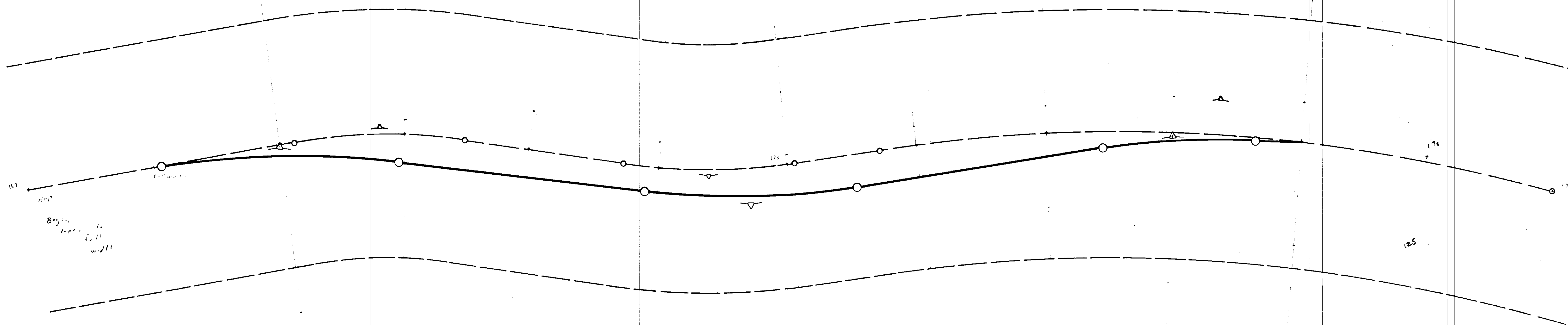


END PROJECT RS-0999 (II)  
STA. "L" 59+26.83  
BEGIN TEMPORARY CONNECTION

Embankment = 4,591 cu. yds. (includes 512 cu. yds. Selected Material)  
Excavation = 4,591 cu. yds. (no waste)  
Borrow = 0  
\*(includes dike material)

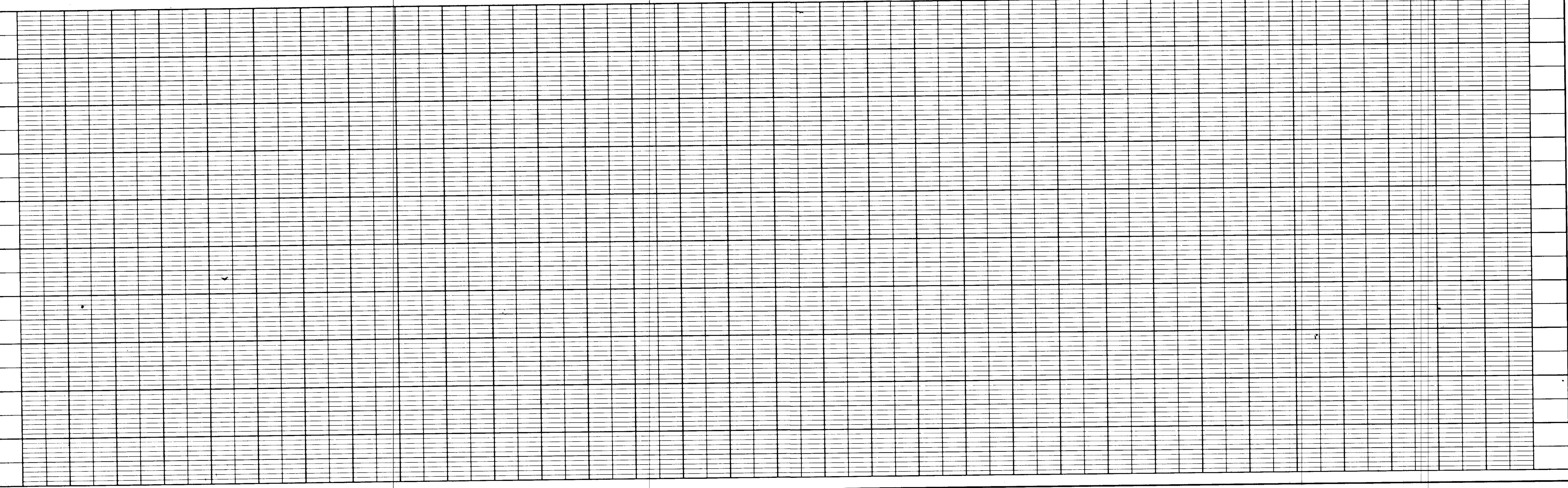
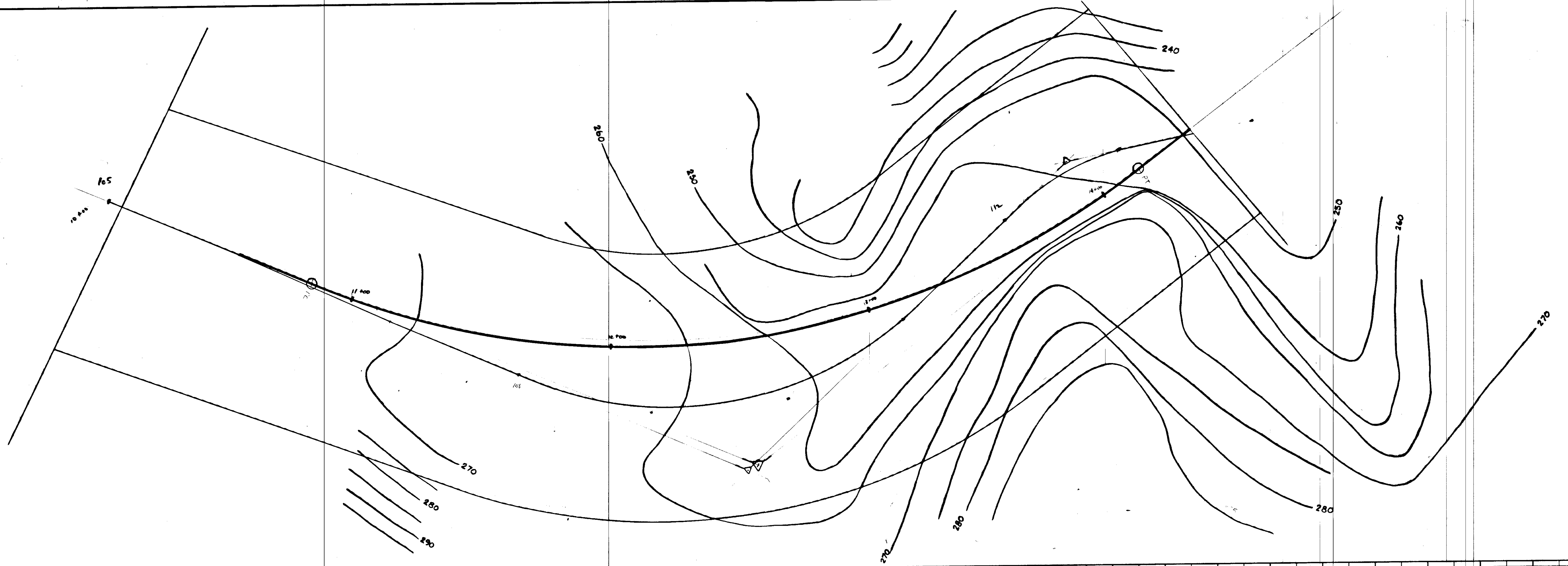
END TEMPORARY CONNECTION  
STA. "L" 63+18.76

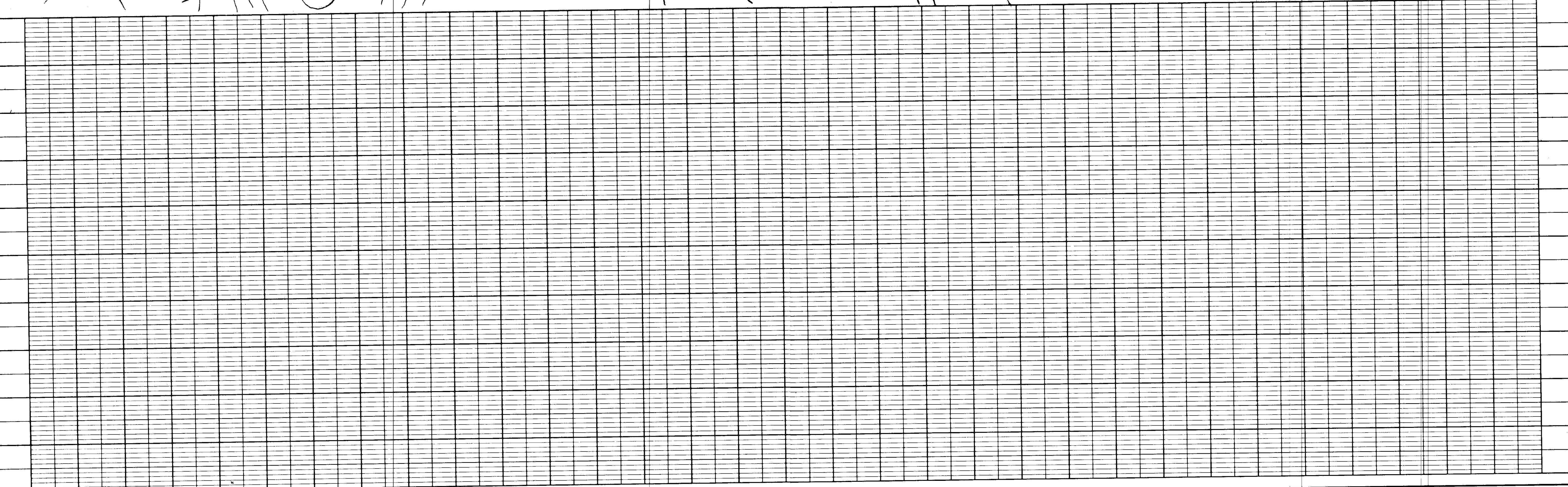
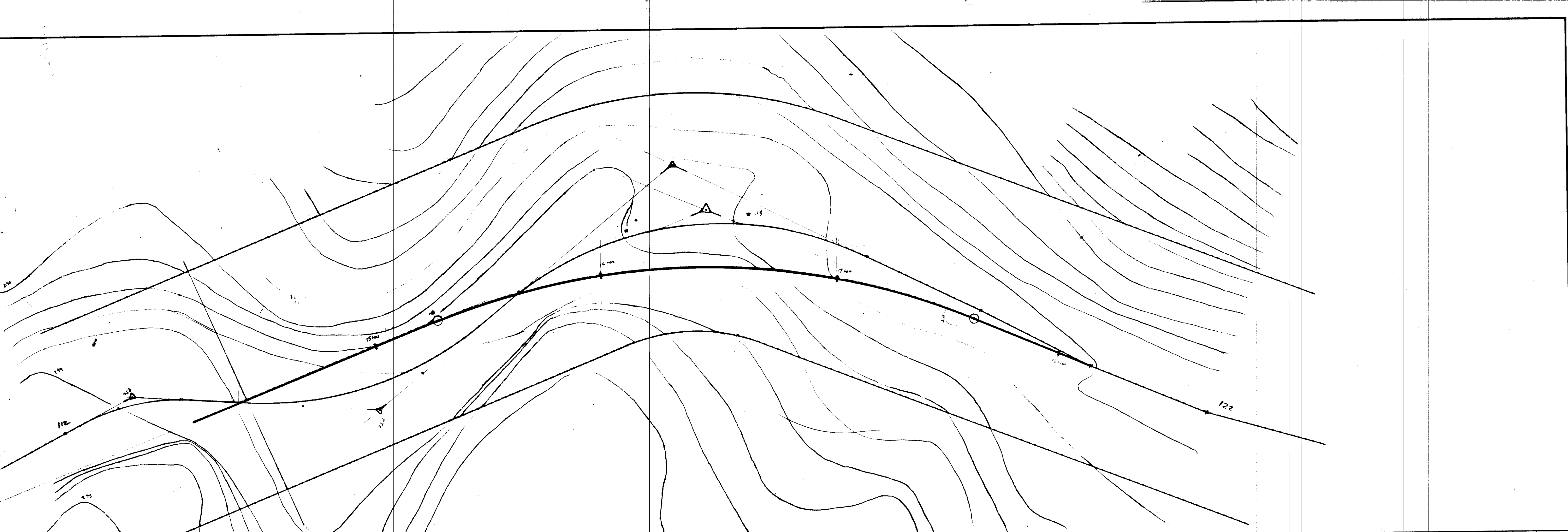




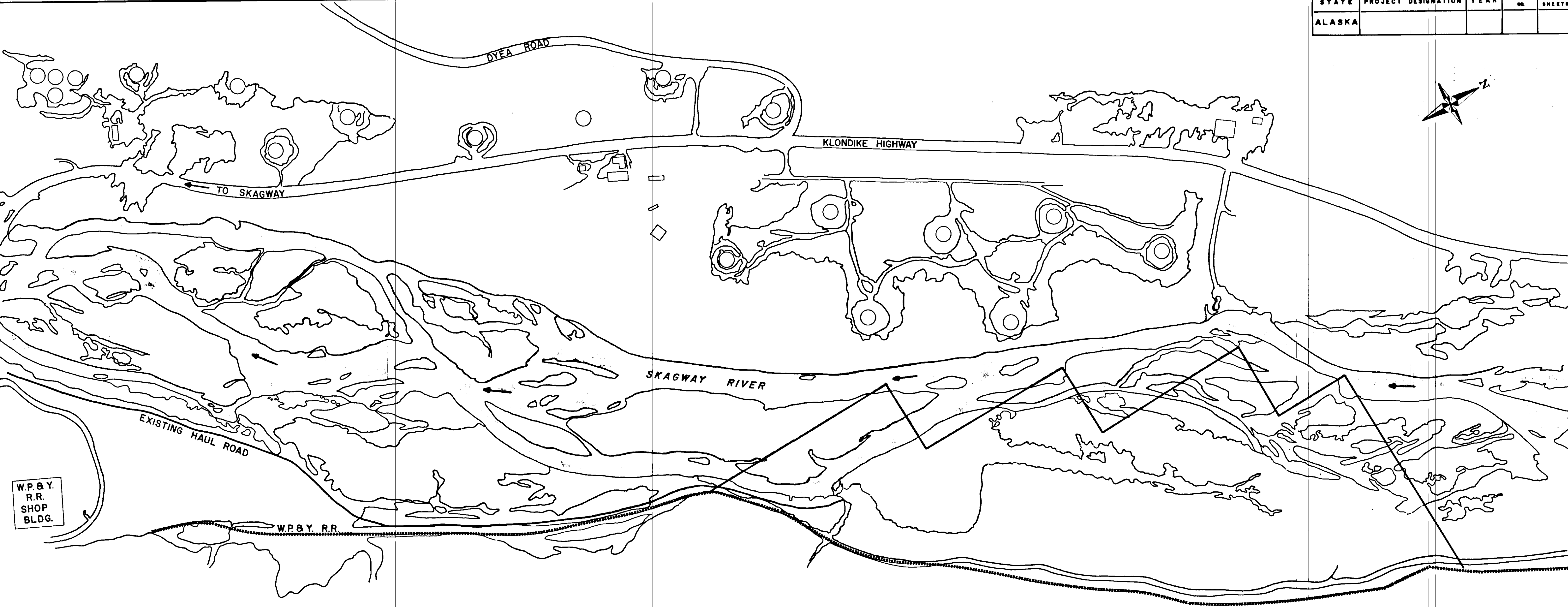
Bog...  
 ...  
 ...

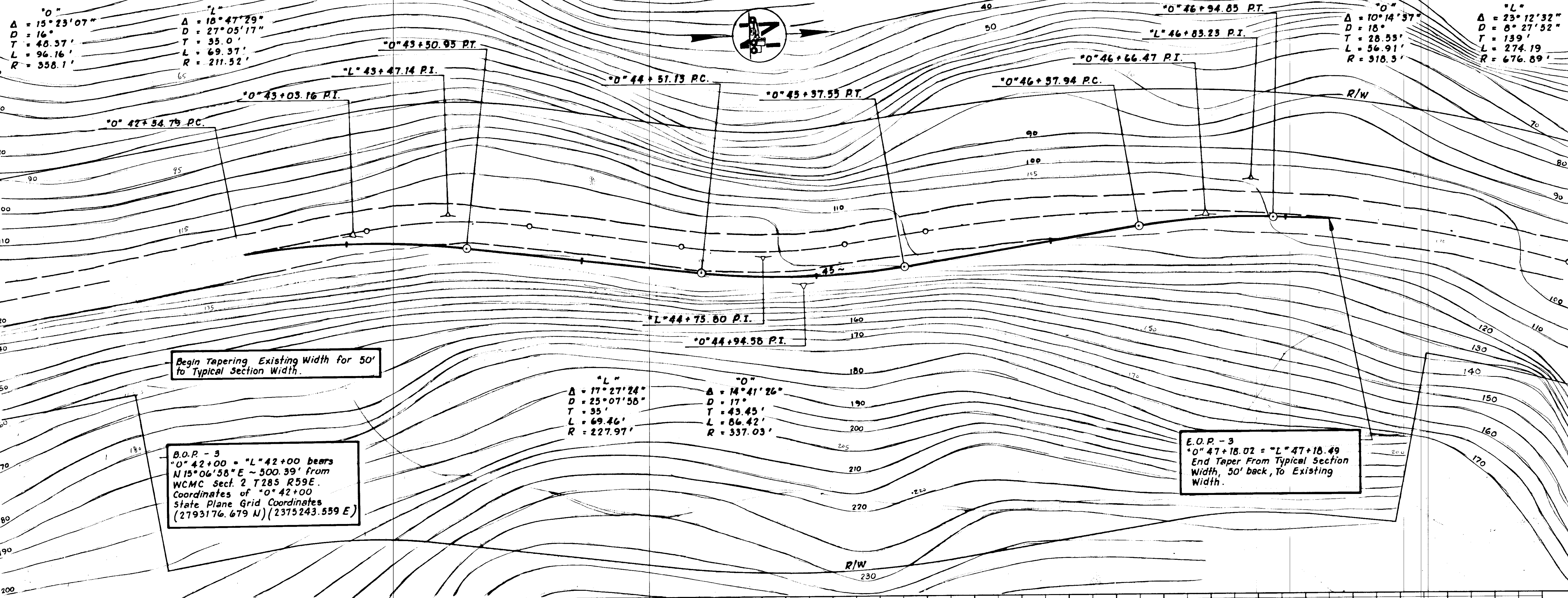
STAMP	DO NOT SCALE THIS DRAWING - USE DIMENSIONS			
	STATE OF ALASKA DEPARTMENT OF TRANSPORTATION AND PUBLIC FACILITIES			
	DESIGNED _____	CHECKED _____	DRAWN _____	DATE _____
PROJECT NUMBER _____		SHEET _____ OF _____		



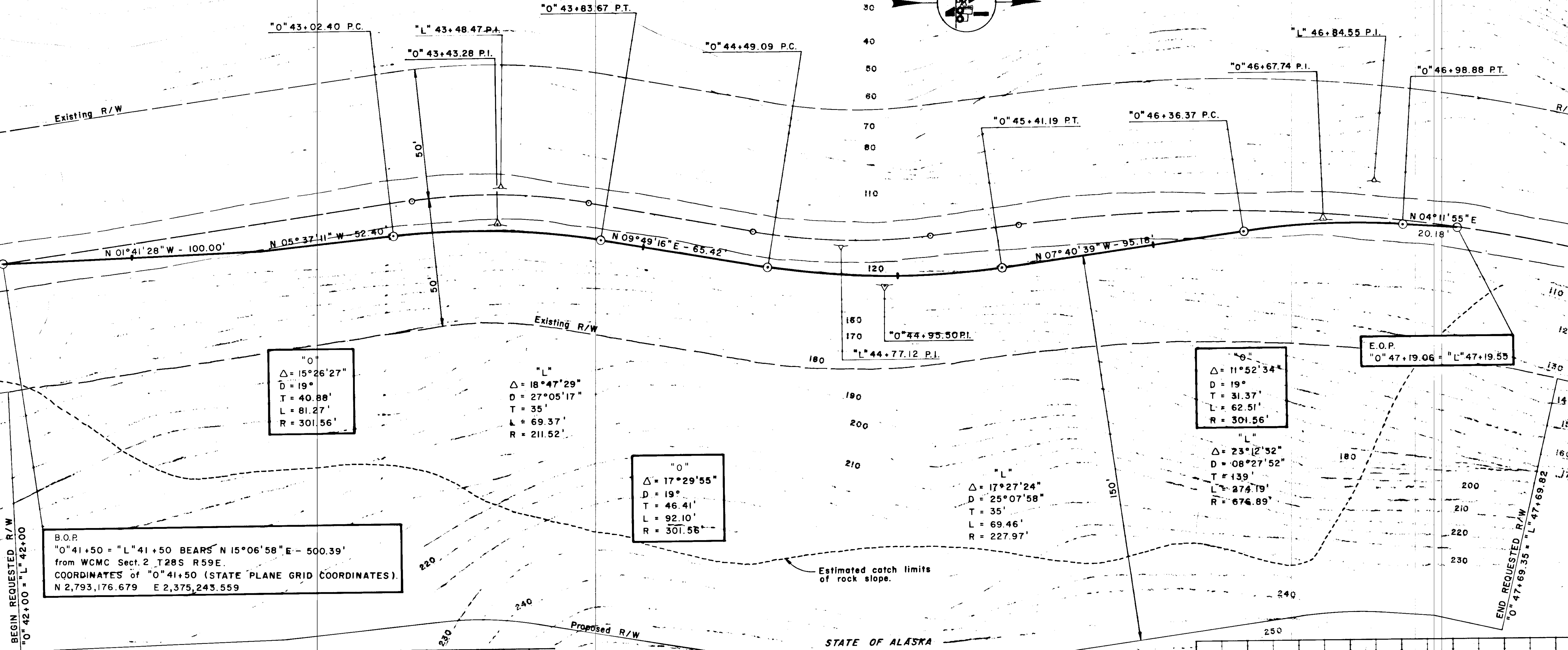
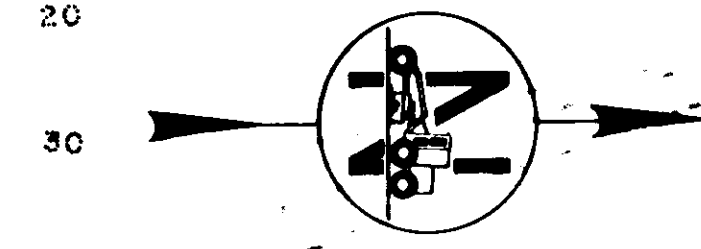


STATE	PROJECT DESIGNATION	YEAR	SHEET NO.	TOTAL SHEETS
ALASKA				



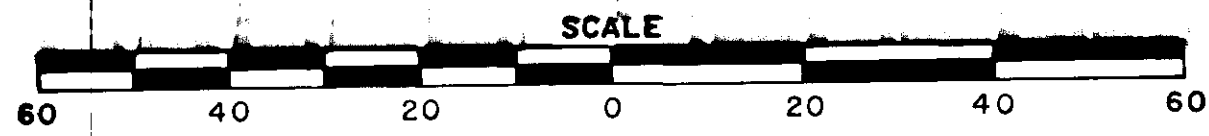


STATE	PROJECT DESIGNATION	YEAR	SHEET NO.	TOTAL SHEETS
ALASKA				

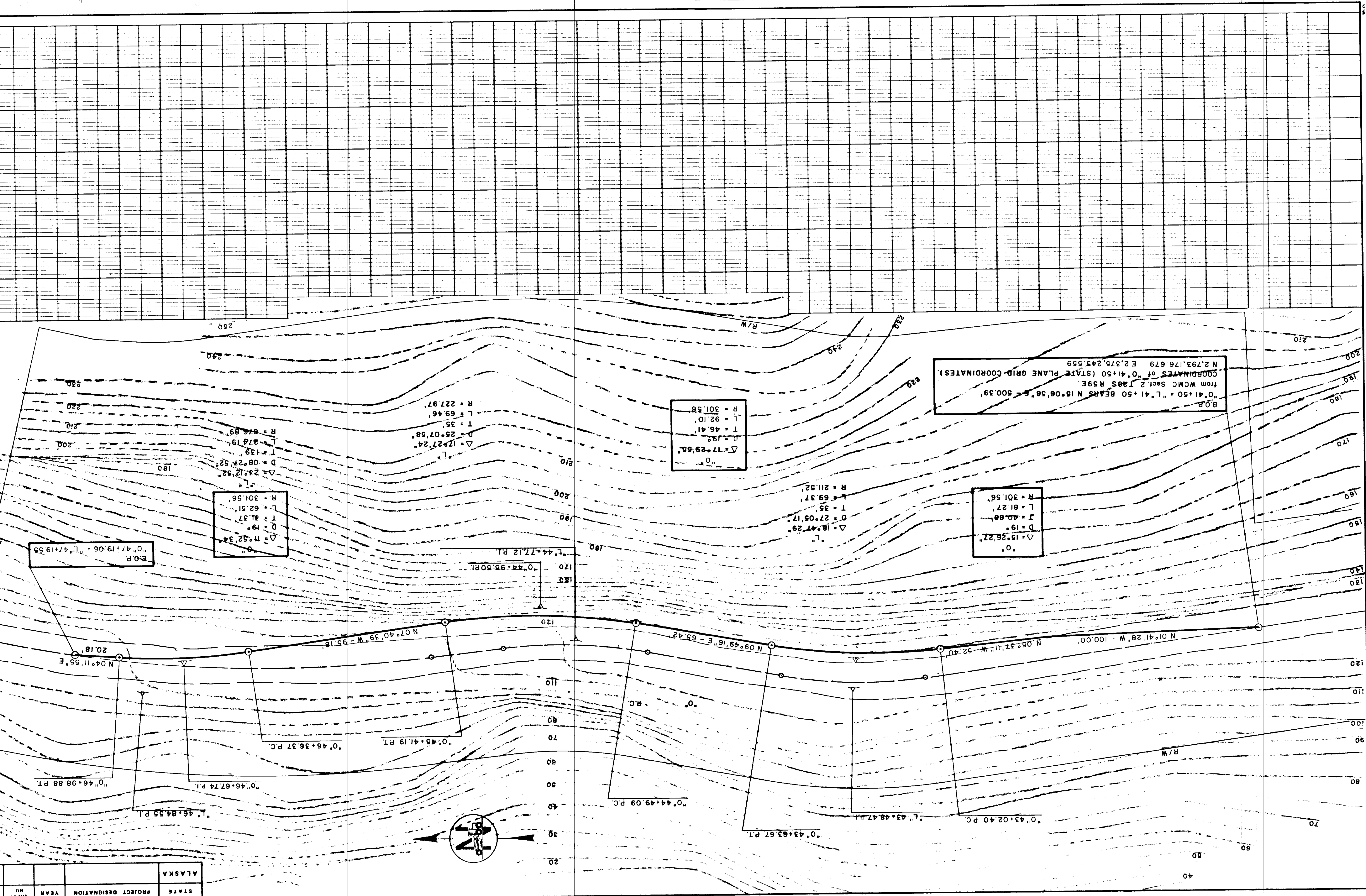


B.O.P.  
 "0"41+50 = "L"41+50 BEARS N 15°06'58" E - 500.39'  
 from WCMC Sect. 2 T28S R59E.  
 COORDINATES of "0"41+50 (STATE PLANE GRID COORDINATES).  
 N 2,793,176.679 E 2,375,243.559

E.O.P.  
 "0"47+19.06 = "L"47+19.55



AREA REQUESTED = 1.0 ACRES APPROX.



B.O.P. "0° 41' 50" = "L" 41+50 BEARS N 15° 08' 58" E - 500.39'  
 from WMC Sect. 2 T20S R59E  
 COORDINATES of "0° 41' 50" (STATE PLANE GRID COORDINATES):  
 N 2,793,176.679 E 2,375,243.559

"0"  
 $\Delta = 17^\circ 29' 55"$   
 $D = 19'$   
 $I = 40.88'$   
 $L = 81.27'$   
 $R = 301.56'$

"0"  
 $\Delta = 15^\circ 36' 27"$   
 $D = 19'$   
 $I = 40.88'$   
 $L = 81.27'$   
 $R = 301.56'$

"L"  
 $\Delta = 18^\circ 47' 29"$   
 $D = 27^\circ 05' 17"$   
 $T = 35'$   
 $L = 69.37'$   
 $R = 211.52'$

"0"  
 $\Delta = 17^\circ 29' 55"$   
 $D = 19'$   
 $I = 40.88'$   
 $L = 81.27'$   
 $R = 301.56'$

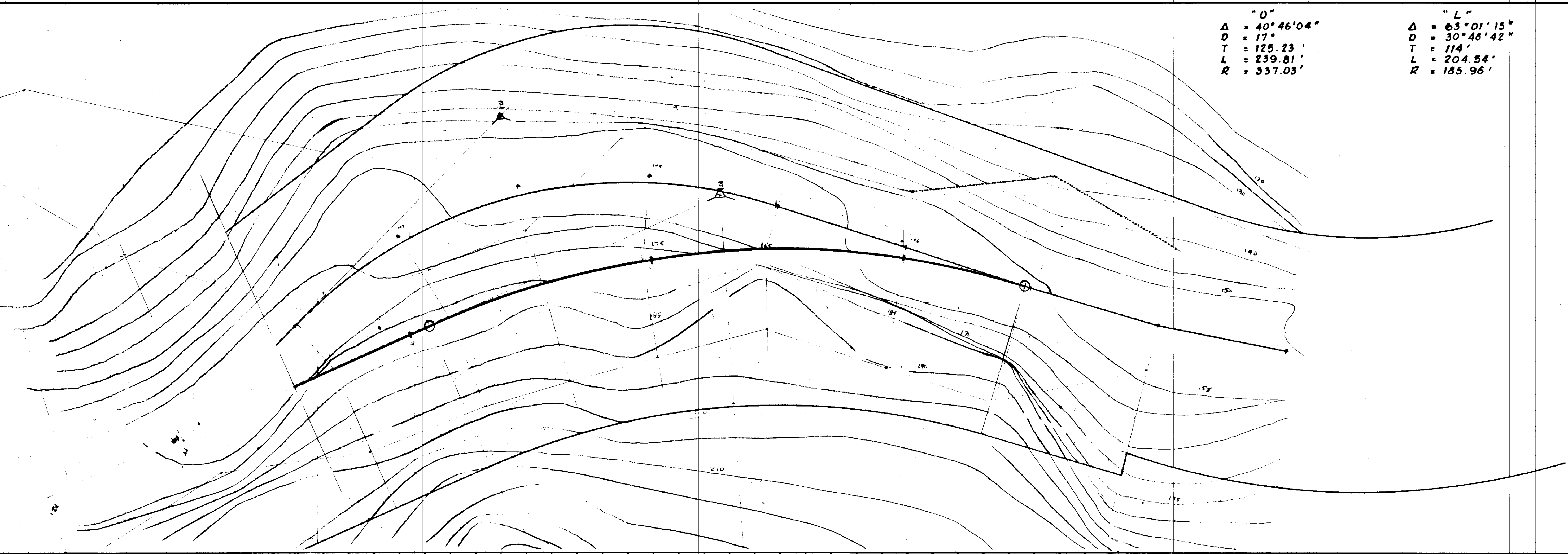
E.O.P. "0° 47' 19.06" = "L" 47+19.55

STATE	ALASKA
PROJECT DESIGNATION	
YEAR	
SHEET NO.	

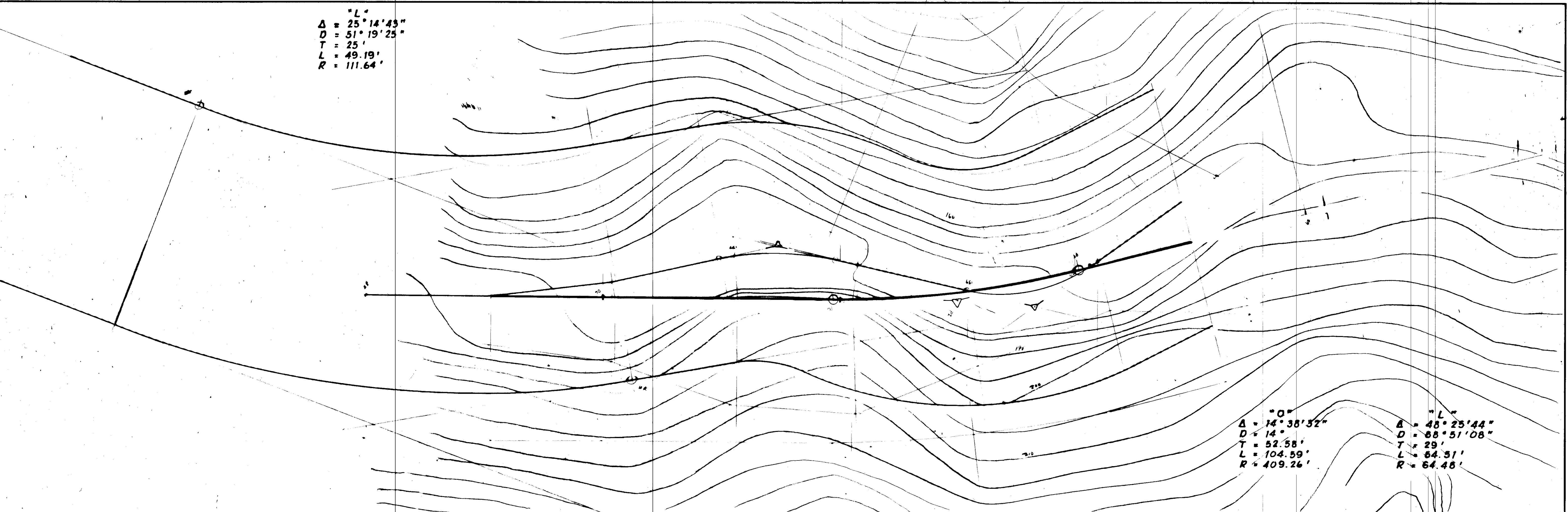


"O"  
 $\Delta = 40^{\circ}46'04''$   
 $D = 17'$   
 $T = 125.23'$   
 $L = 239.81'$   
 $R = 337.03'$

"L"  
 $\Delta = 63^{\circ}01'15''$   
 $D = 30^{\circ}48'42''$   
 $T = 114'$   
 $L = 204.54'$   
 $R = 185.96'$



"L"  
 $\Delta = 25^\circ 14' 43''$   
 $D = 51^\circ 19' 25''$   
 $T = 25'$   
 $L = 49.19'$   
 $R = 111.64'$



"O"  
 $\Delta = 14^\circ 38' 52''$   
 $D = 14'$   
 $T = 52.58'$   
 $L = 104.59'$   
 $R = 409.26'$

"L"  
 $\Delta = 48^\circ 25' 44''$   
 $D = 88^\circ 51' 08''$   
 $T = 29'$   
 $L = 64.51'$   
 $R = 64.48'$