

STATE OF ALASKA
 DEPARTMENT OF TRANSPORTATION
 AND
 PUBLIC FACILITIES
 SOUTHEAST REGION
 DESIGN AND CONSTRUCTION DIVISION

INDEX OF SHEETS	
SHEET NO.	DESCRIPTION
1	TITLE SHEET
2	TYPICAL SECTION/ESTIMATE OF QUANTITIES
3	SITE LOCATION PLAN

The following Standard Drawings apply to this project :
 A-1, C-02.01, C-03.01

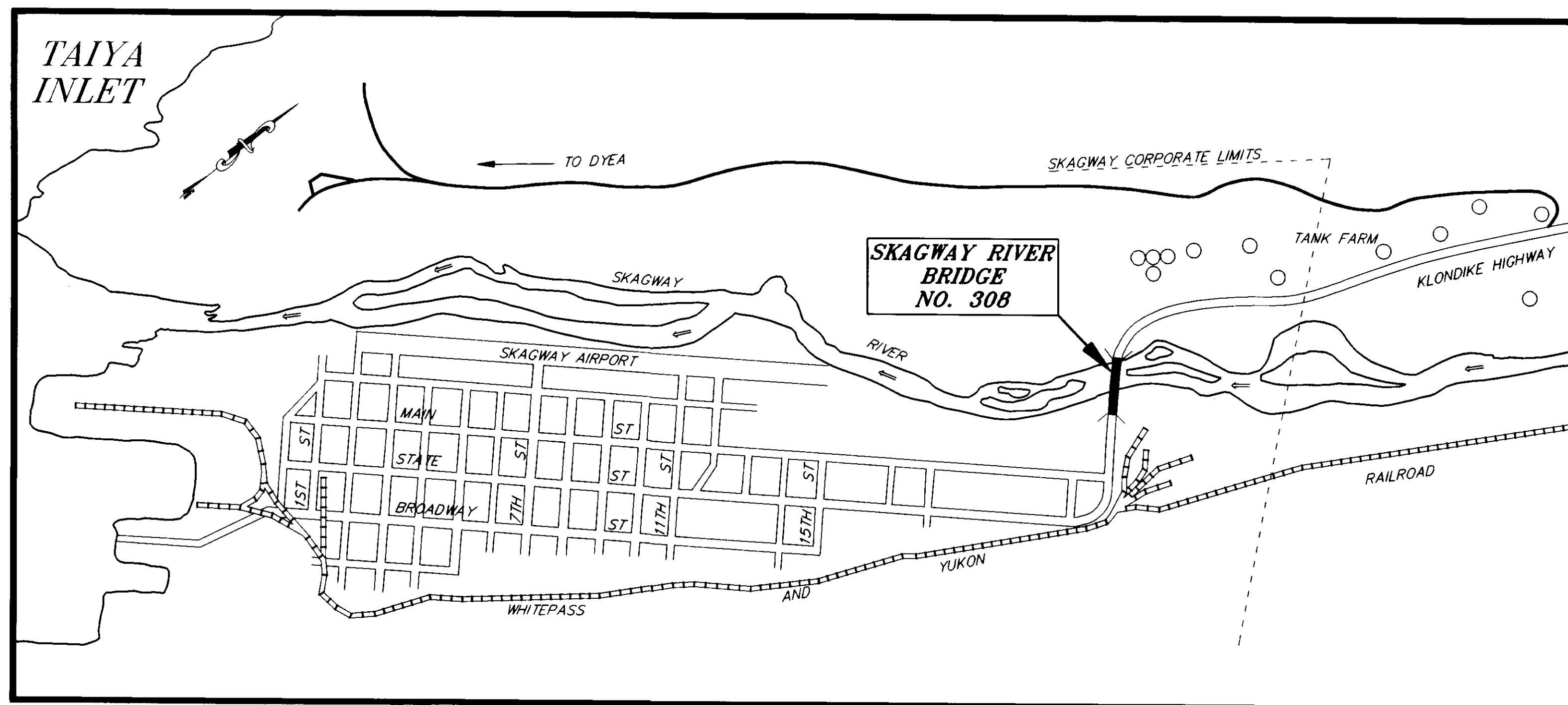
SKAGWAY, ALASKA

**SKAGWAY RIVER BRIDGE
 FINGER DIKE REPAIR
 (RIPRAP SLOPE PROTECTION)**

PROJECT NO. NH-097-2(11) 71369

"AS - BUILTS"

Contractor: NORTHERN TIMBER CORP.
 Project Engineer: CLIFF DOUGLAS
 Date Started: SEPTEMBER 9, 1994
 Date Ended: SEPTEMBER 21, 1994



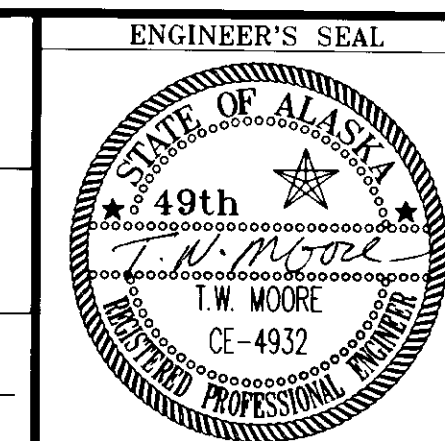
VICINITY MAP

STATE OF ALASKA
 DEPARTMENT OF TRANSPORTATION
 AND
 PUBLIC FACILITIES
 SOUTHEAST REGION DESIGN SECTION

APPROVED *[Signature]* Date 5/17/94
 Regional Preconstruction Engineer

APPROVED *[Signature]* Date 5/17/94
 Director, S.E. Region Design & Construction

PROJECT NUMBER:
71369
 DATE:
JUNE 1994
 SHEET **1** OF **3**



P:\SGY\DIKE\DR\TSHEET 1-1

ESTIMATE OF QUANTITIES

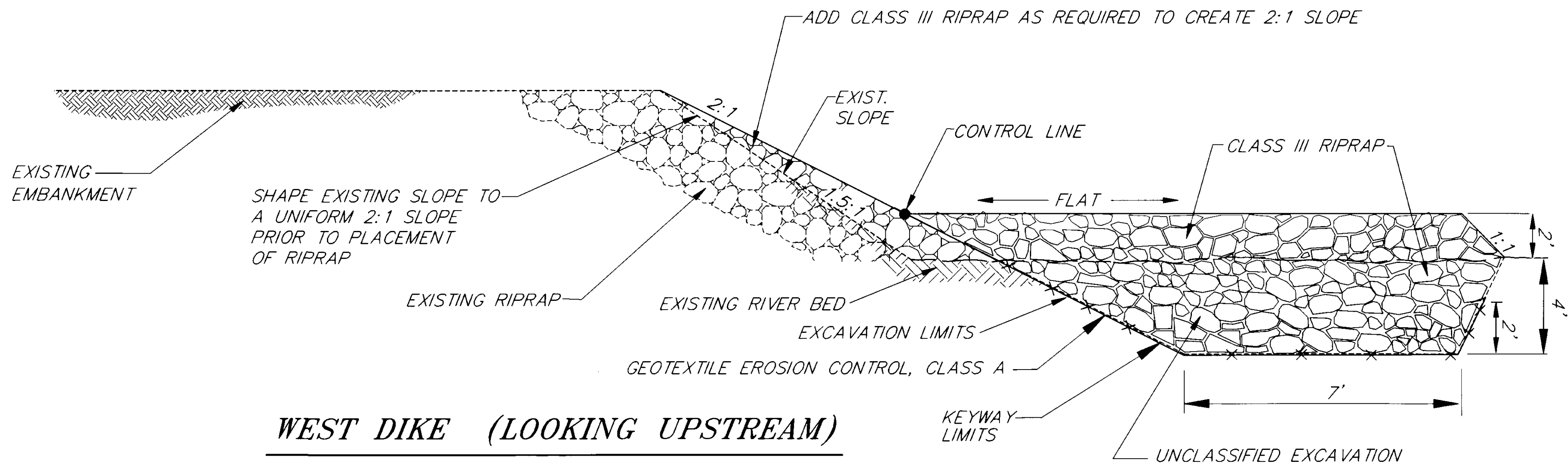
ITEM NO.	ITEM	UNIT	QUANTITY
120(1)	DBE ADJUSTMENT	CS	ALL REQ'D
203(11)	UNCLASSIFIED EXCAVATION	LS	ALL REQ'D
611(3)	RIPRAP, CLASS III	LS	ALL REQ'D
631(3)	GEOTEXTILE EROSION CONTROL, CLASS A	LS	ALL REQ'D
640(1)	MOBILIZATION AND DEMOBILIZATION	LS	ALL REQ'D
641(1)	TEMPORARY EROSION AND POLLUTION CONTROL	CS	ALL REQ'D
642(1)	CONSTRUCTION SURVEYING	LS	ALL REQ'D

ESTIMATED QUANTITIES

ITEM NO.	QUANTITY
203(11) UNCLASSIFIED EXCAVATION	= 1,200 CY
611(3) RIPRAP, CLASS III	= 2,500 CY
631(3) GEOTEXTILE EROSION CONTROL, CLASS A	= 1,100 SY

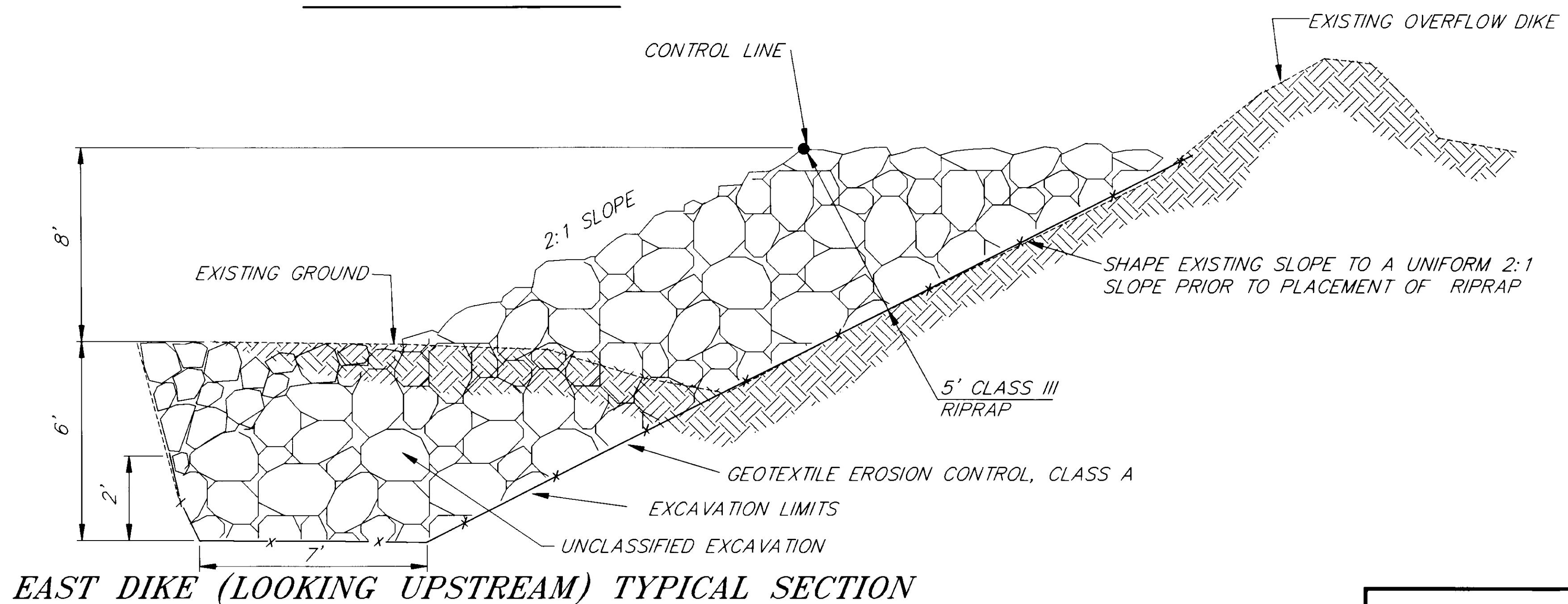
GENERAL NOTES

1. ALL UNUSED, UNCLASSIFIED EXCAVATION SHALL BE HAULED TO AN APPROVED WASTE SITE.
2. THE CONTRACTOR SHALL PLACE RIPRAP AROUND THE BRIDGE ABUTMENTS SO THAT IT HAS A UNIFORM SLOPE.
3. THE BOTTOM OF THE STEEL BRIDGE GIRDERS IS AT ELEV 79.71, WARP THE TOP OF RIPRAP AS REQUIRED TO CLEAR THE BOTTOM OF THE STEEL BRIDGE GIRDERS AND TO PROVIDE SPACE FOR CONSTRUCTION AS DIRECTED BY THE ENGINEER.
4. LOCATIONS AND ELEVATIONS GIVEN ARE SUBJECT TO FIELD REVISION BY THE ENGINEER.



WEST DIKE (LOOKING UPSTREAM)

TYPICAL SECTION



EAST DIKE (LOOKING UPSTREAM) TYPICAL SECTION

NOTE: DO NOT SCALE FROM THESE PLANS—USE DIMENSIONS

PATH:	DATE:	DESCRIPTION OF CHANGE:
P:\SGY\DIKE\DR\EST-TYP 1=1		

RECORD OF REVISIONS

STATE OF ALASKA
DEPARTMENT OF TRANSPORTATION
AND PUBLIC FACILITIES
SOUTHEAST REGION DESIGN & CONSTRUCTION

SKAGWAY

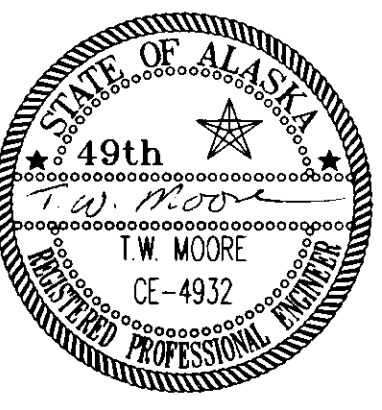
FINGER DIKE REPAIR
PROJECT NO. NH-097-2(11) 71369

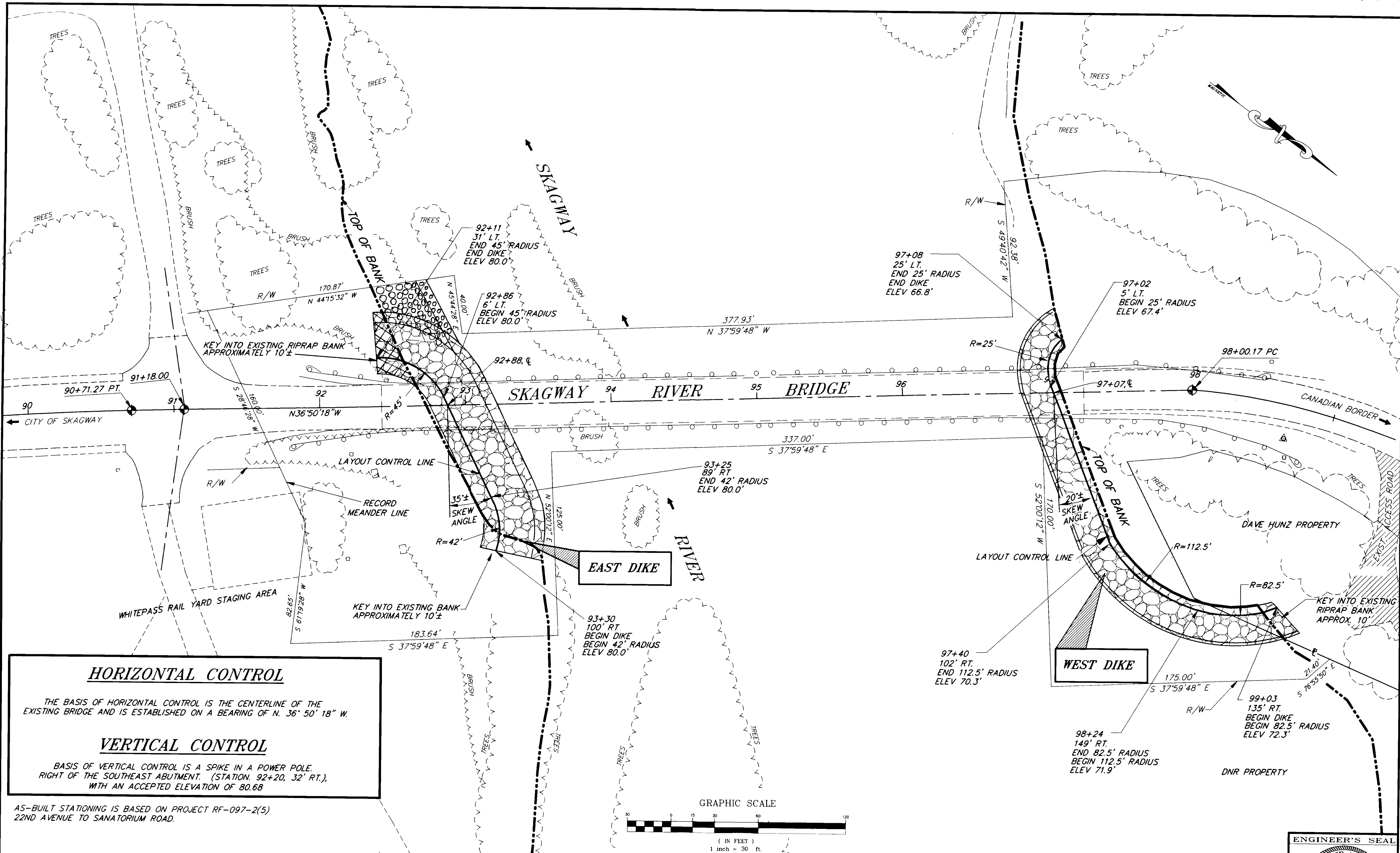
ESTIMATE OF QUANTITIES/ TYPICAL SECTION

ALASKA

DESIGNED BY:	P. JONES
DRAWN BY:	C. ANDERSON/B. ADAMS
CHECKED BY:	T.W. MOORE

PROJECT NO.	71369
DATE:	JUNE 94
SHEET	2 OF 3





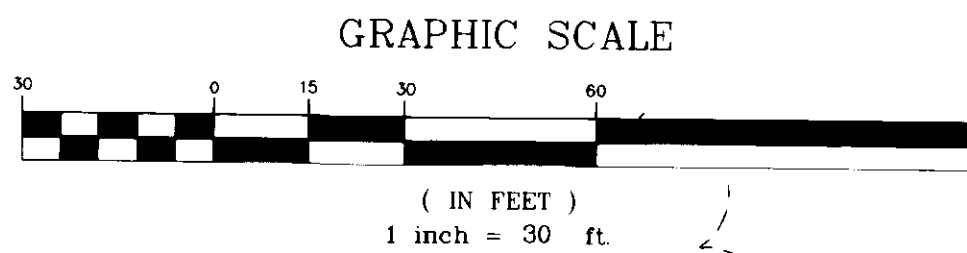
HORIZONTAL CONTROL

THE BASIS OF HORIZONTAL CONTROL IS THE CENTERLINE OF THE EXISTING BRIDGE AND IS ESTABLISHED ON A BEARING OF N. 36° 50' 18" W.

VERTICAL CONTROL

BASIS OF VERTICAL CONTROL IS A SPIKE IN A POWER POLE, RIGHT OF THE SOUTHEAST ABUTMENT. (STATION. 92+20, 32' RT.), WITH AN ACCEPTED ELEVATION OF 80.68

AS-BUILT STATIONING IS BASED ON PROJECT RF-097-2(5) 22ND AVENUE TO SANATORIUM ROAD.



PATH: P:\SGY\DIKE\DR\VIC30 1=30		
BY:	DATE:	DESCRIPTION OF CHANGE:
RECORD OF REVISIONS		

STATE OF ALASKA
DEPARTMENT OF TRANSPORTATION
AND PUBLIC FACILITIES
SOUTHEAST REGION DESIGN & CONSTRUCTION

SKAGWAY

FINGER DIKE REPAIR
PROJECT NO. HN-097-2(11) ~ 71369
SITE LOCATION PLAN

NOTE: DO NOT SCALE FROM THESE PLANS-USE DIMENSIONS

DESIGNED BY: P. JONES	PROJECT NO. 71369
DRAWN BY: C. ANDERSON	DATE: JUNE, 1994
CHECKED BY: T.W. MOORE	SHEET 3 OF 3

