

U. S. DEPARTMENT OF THE INTERIOR

OFFICE OF TERRITORIES

A L A S K A P U B L I C W O R K S

Project No. Aaa. 50 - A - 261

SMALL BOAT HARBOR

SKAGWAY, ALASKA

DEPARTMENT OF THE INTERIOR
ALASKA PUBLIC WORKS
AS-BUILT DRAWING
APPROVED: *Tom G. Murray* DIRECTOR
JUNEAU, ALASKA Date MAR 23 1960

FELIX J. TONER, REGISTERED ENGINEER

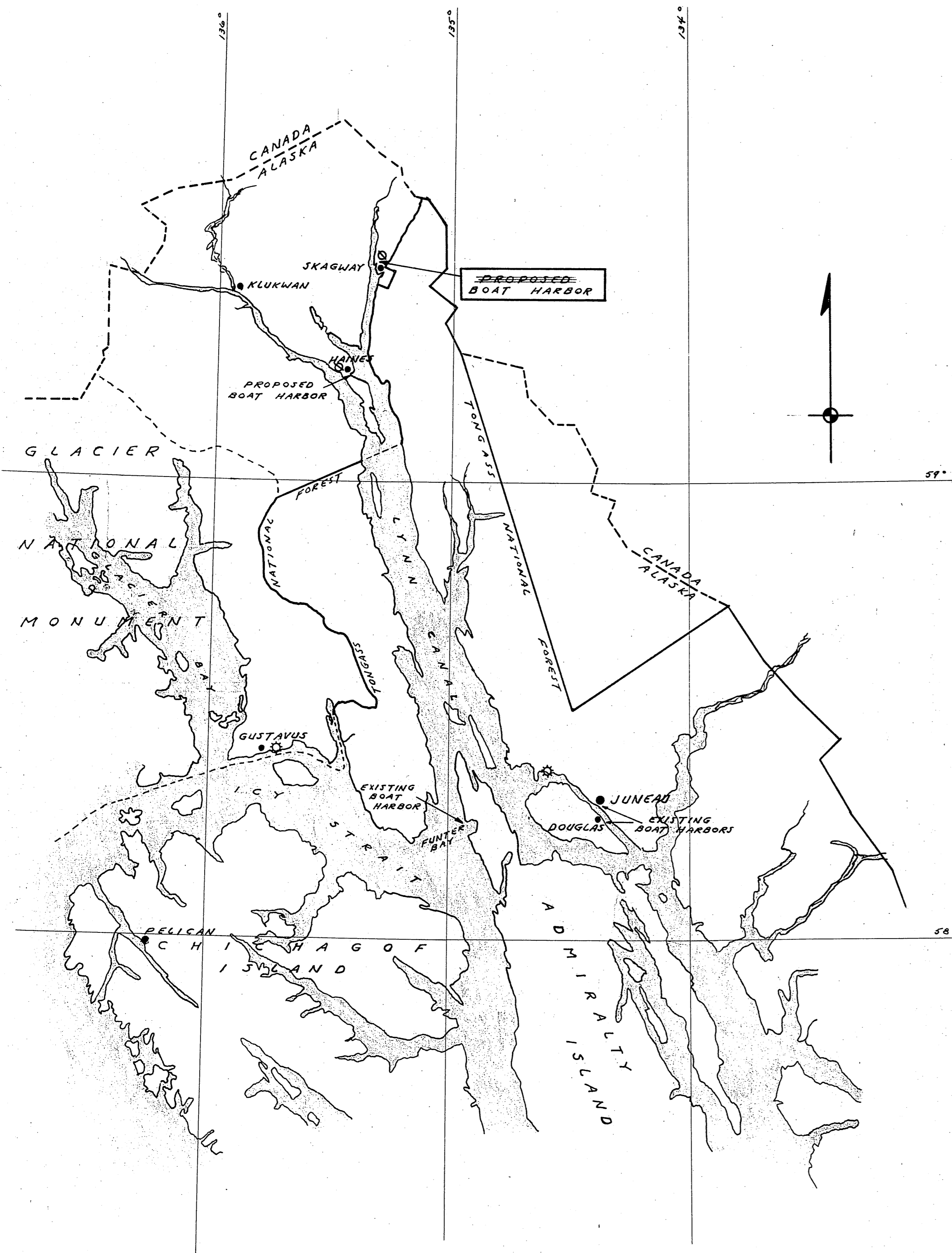
JUNEAU, ALASKA

Set No. _____

AS CONSTRUCTED - SEPT. 1959

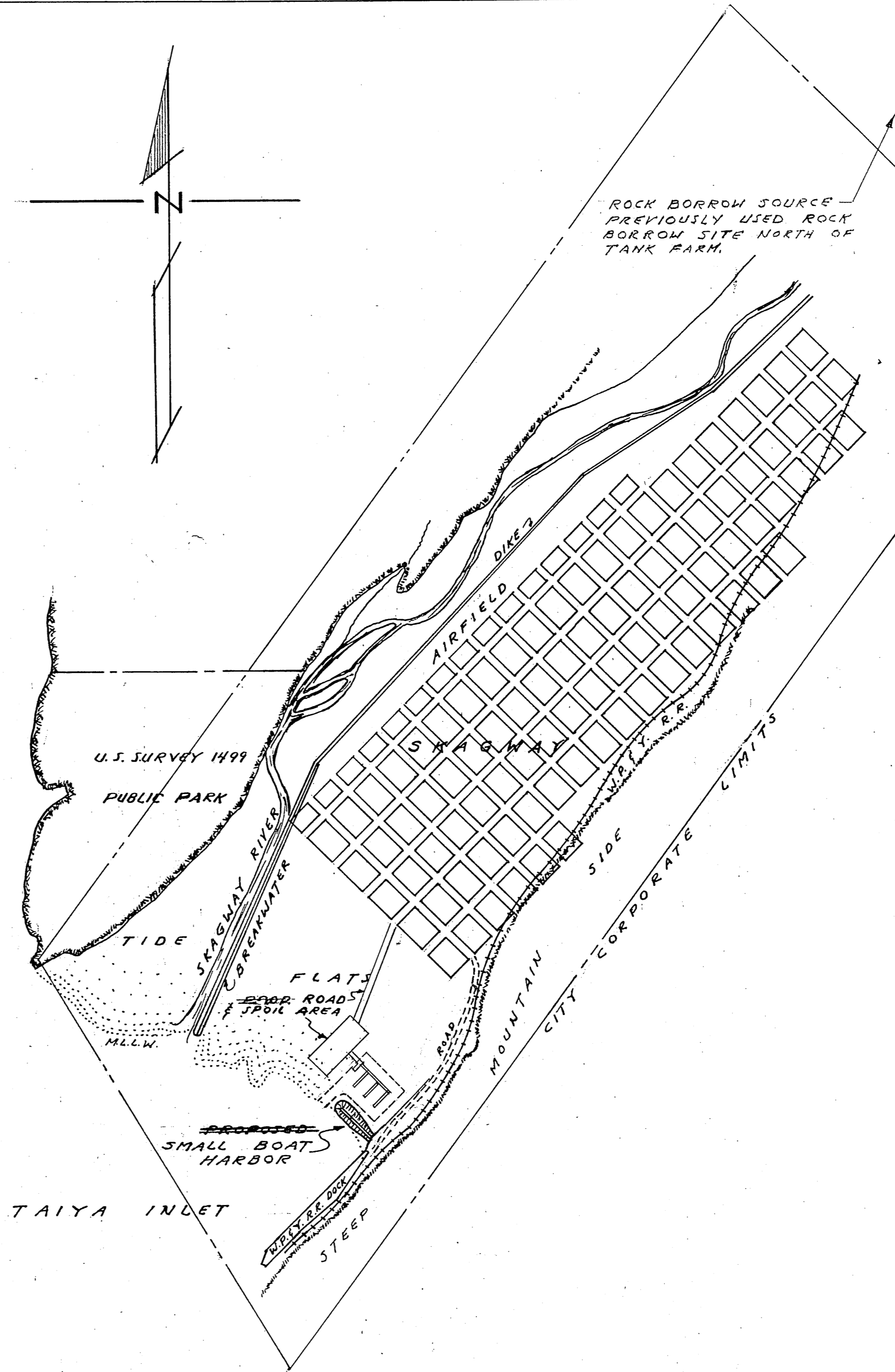
**SECTION II
BASIN EXCAVATION**

**SECTION I
ROCK BREAKWATER**



VICINITY MAP

SOUTHEAST ALASKA
SCALE: 1" = 12 MILES



LOCATION MAP

SKAGWAY SMALL BOAT HARBOR
SCALE: 1" = 800'

ESTIMATED QUANTITIES

ITEM	ESTIMATED QUANTITY	BID ITEM
SECTION I		
ROCK BREAKWATER	18,507 CU.YD.	LUMP SUM
SECTION II		
COMMON DREDGING, PROJECT DEPTH	64,531 CU.YD.	LUMP SUM
" " OVERDEPTH	6,289 CU.YD.	LUMP SUM
TIMBER BULKHEAD		LUMP SUM

(UNDER CONTRACT 50-A-261, SECTION I)
(UNDER CONTRACT 50-A-261, SECTION II)

SCHEDULE OF DRAWINGS

TITLE	SHEET NO.
VICINITY AND LOCATION MAP	1 of 8
PLAN AND DETAILS	2 of 8
PLAN AND DETAILS	3 of 8
TIMBER BULKHEAD	4 of 8

AS CONSTRUCTED - SEPT. 1959

U.S. DEPARTMENT of the INTERIOR — OFFICE of TERRITORIES

ALASKA PUBLIC WORKS
Project No. 50-A-261 SKAGWAY, ALASKA

VICINITY and LOCATION MAPS
SKAGWAY BOAT HARBOR

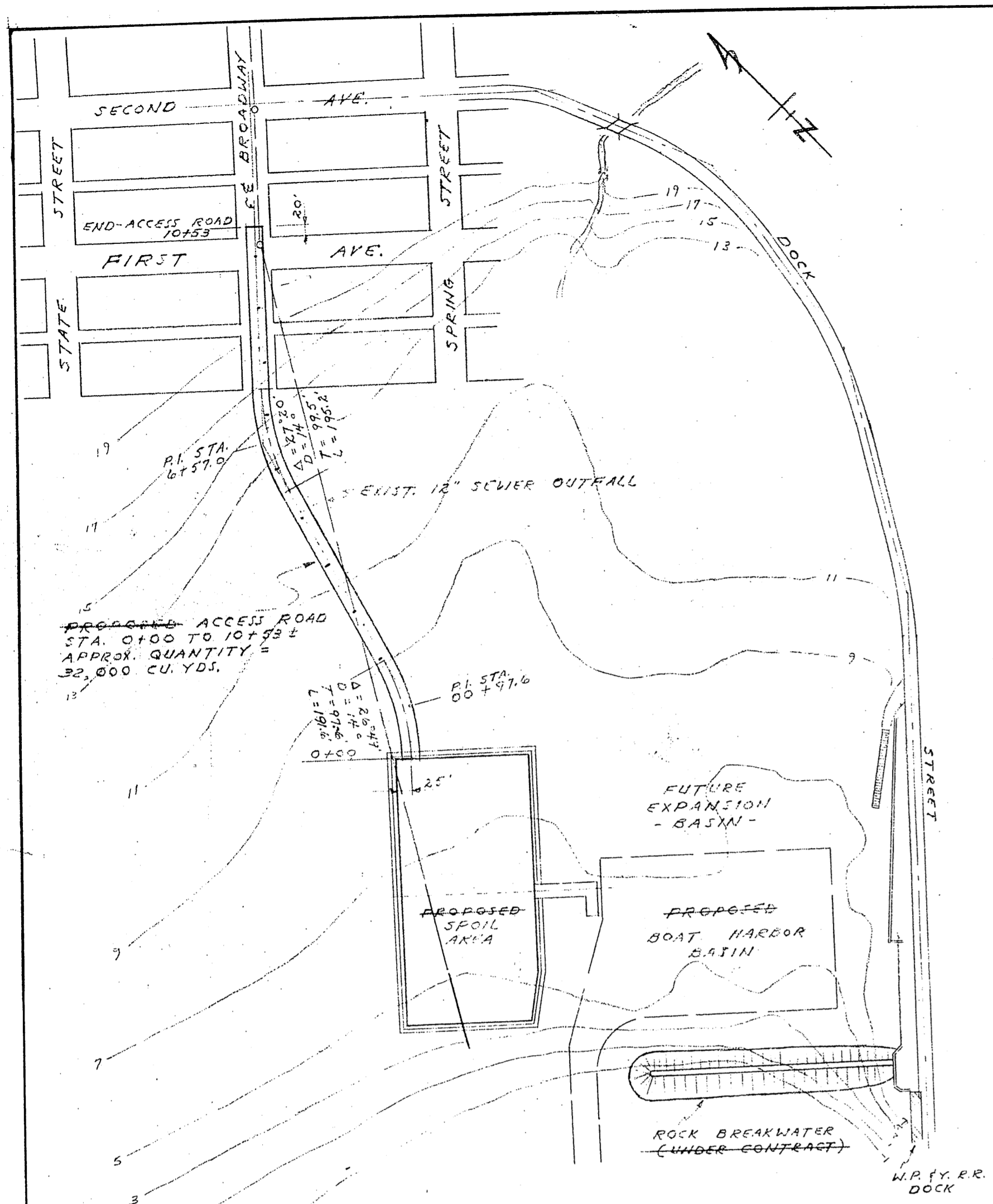
Scale: As Noted Sheet 1 of 8

Designed: F.J.T. APPROVED: _____
 Drawn: L.D.R. _____
 Checked: F.J.T. _____ MAYOR
 JANUARY 1957 _____ City of Skagway

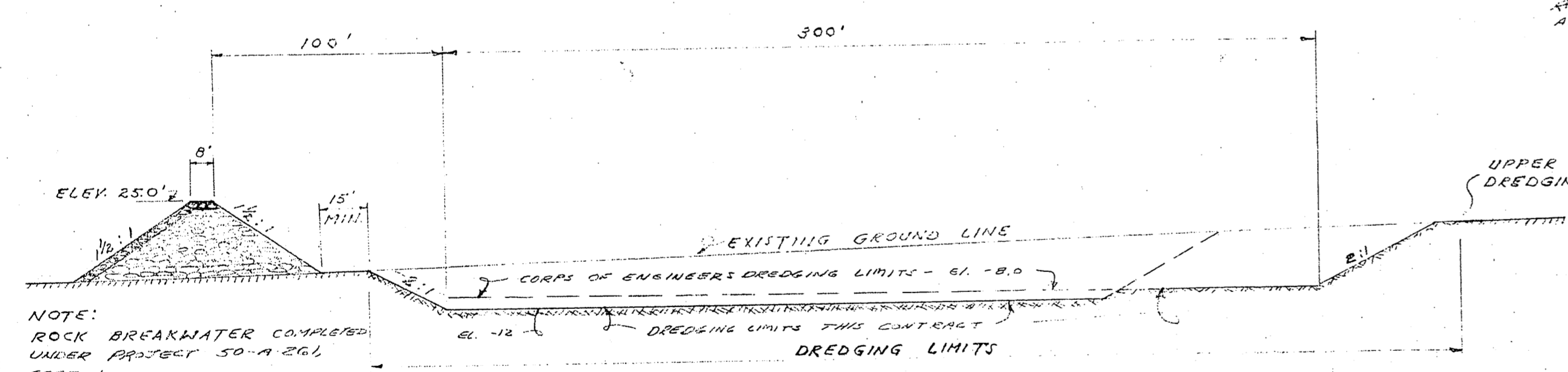
FELIX J. TONER, REGISTERED ENGINEER - JUNEAU, ALASKA

APPROVED FOR TERRITORY of ALASKA
 By Frank A. Metcalf
 FRANK A. METCALF
 ALASKA HIGHWAY COMMISSIONER
 DATE 7/1/57

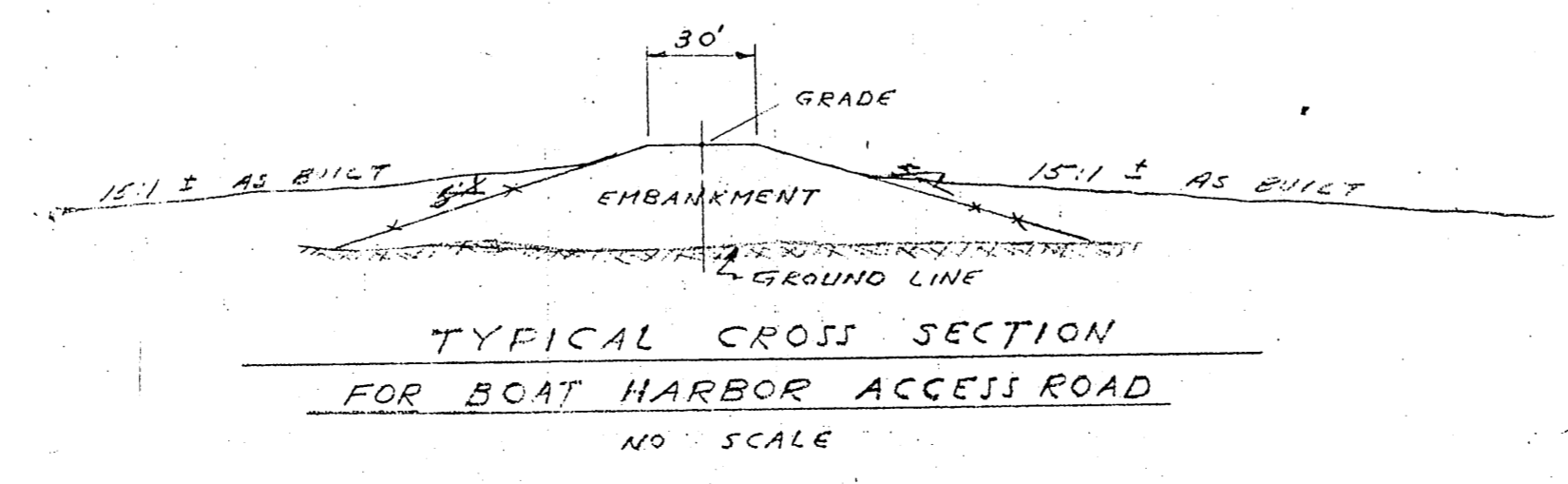
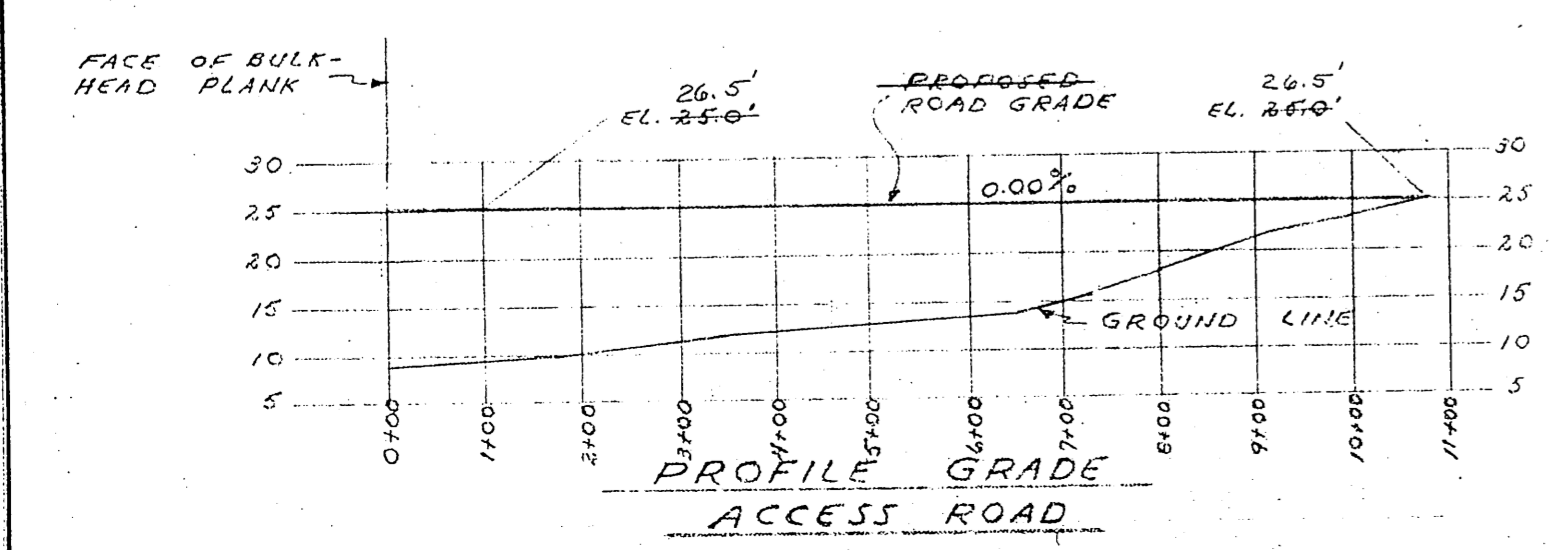
Date _____
 These plans have been approved by the City
 Council and Mayor of _____
 Mayor, _____
 Attest _____
 City Clerk



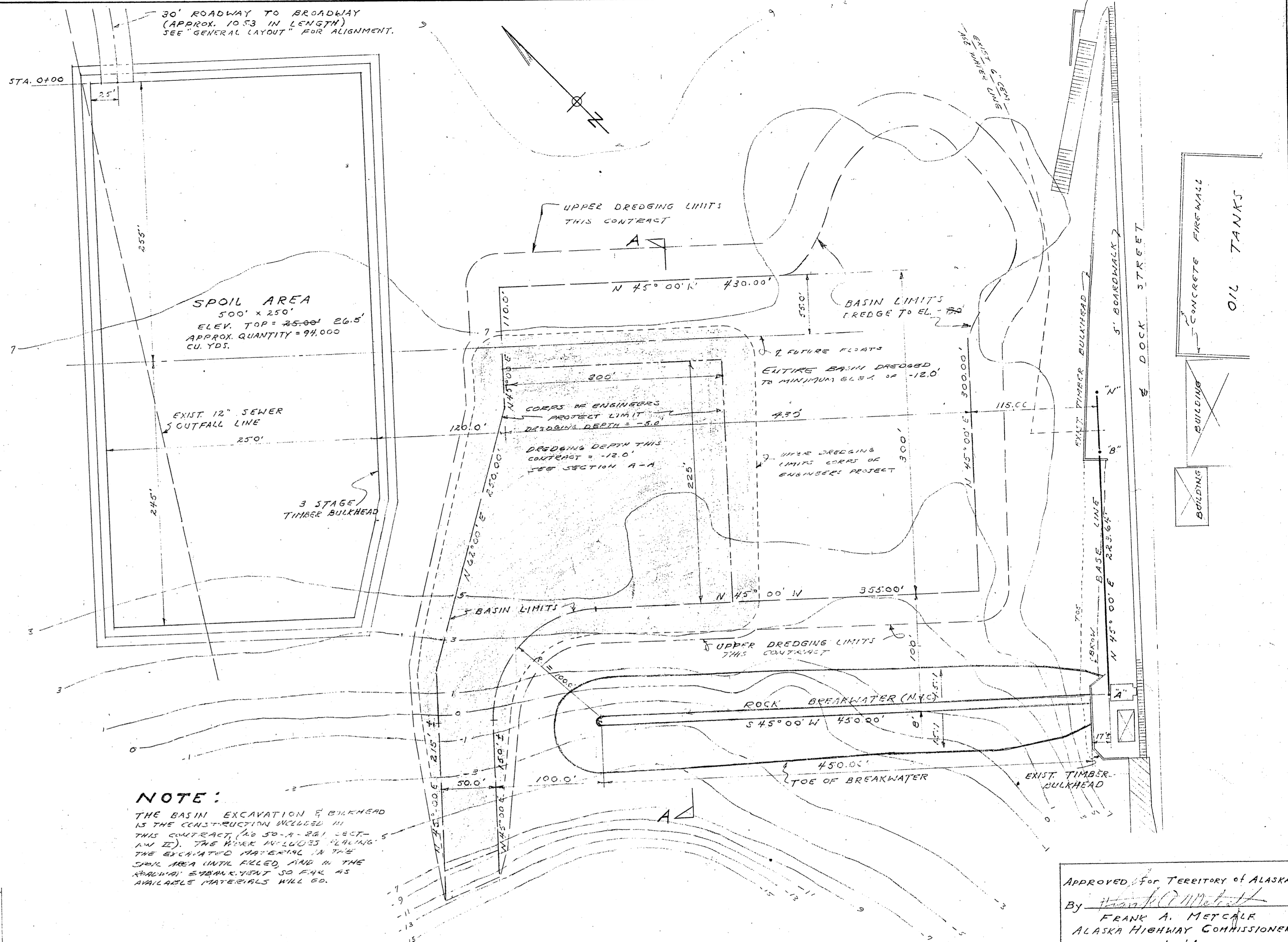
GENERAL LAYOUT
SMALL BOAT HARBOR & ACCESS ROAD
 1" = 200'



TYPICAL SECTION A-A
'BOAT' HARBOR
 SCALE: 1" = 40'



TYPICAL CROSS SECTION
FOR BOAT HARBOR ACCESS ROAD
 NO SCALE



NOTE:
 THE BASIN EXCAVATION & BULKHEAD IS THE CONSTRUCTION INCLUDED IN THIS CONTRACT, (AS 50-A-261 SECT. 1 AND 2). THE WORK INCLUDES PLACING THE EXCAVATED MATERIAL IN THE SPOIL AREA UNTIL FILLED, AND IN THE REMAINING EMBANKMENT SO FAR AS AVAILABLE MATERIALS WILL GO.

MASTER PLAN
SMALL BOAT HARBOR
 SCALE: 1" = 60'

NOTE: FOR PROBINGS, SEE SHEET 2 OF CORPS OF ENGINEERS PROJECT.

APPROVED FOR TERRITORY OF ALASKA
 By FRANK A. METCALF
 ALASKA HIGHWAY COMMISSIONER
 DATE: 7/1/57

Date
 These plans have been approved by the City Council and Mayor of SKAGWAY
 Mayor,
 Attest _____ City Clerk

U.S. DEPARTMENT of the INTERIOR—OFFICE of TERRITORIES

ALASKA PUBLIC WORKS
 Project No. 50-A-261 SKAGWAY, ALASKA

PLANS & DETAILS
SKAGWAY BOAT HARBOR

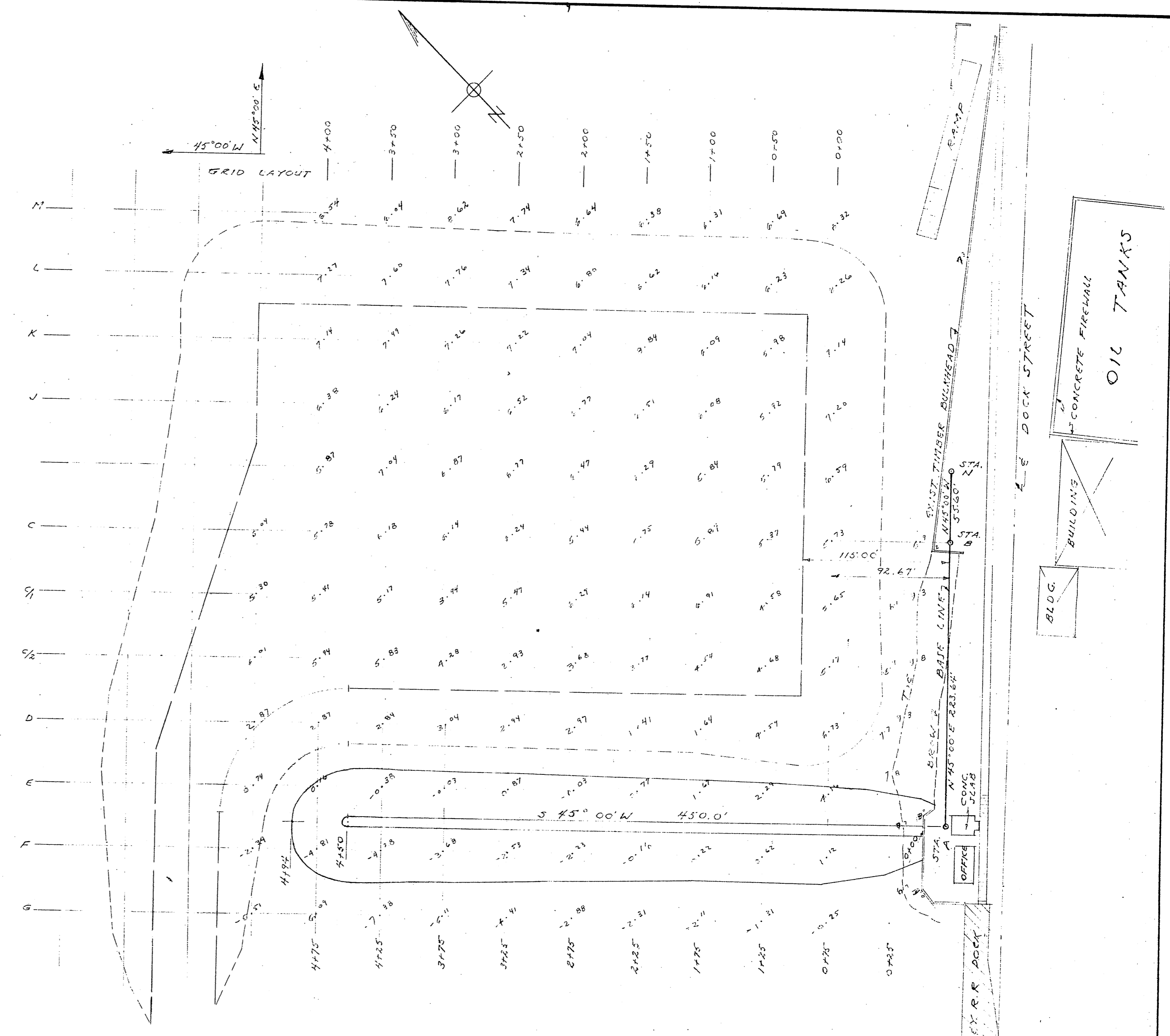
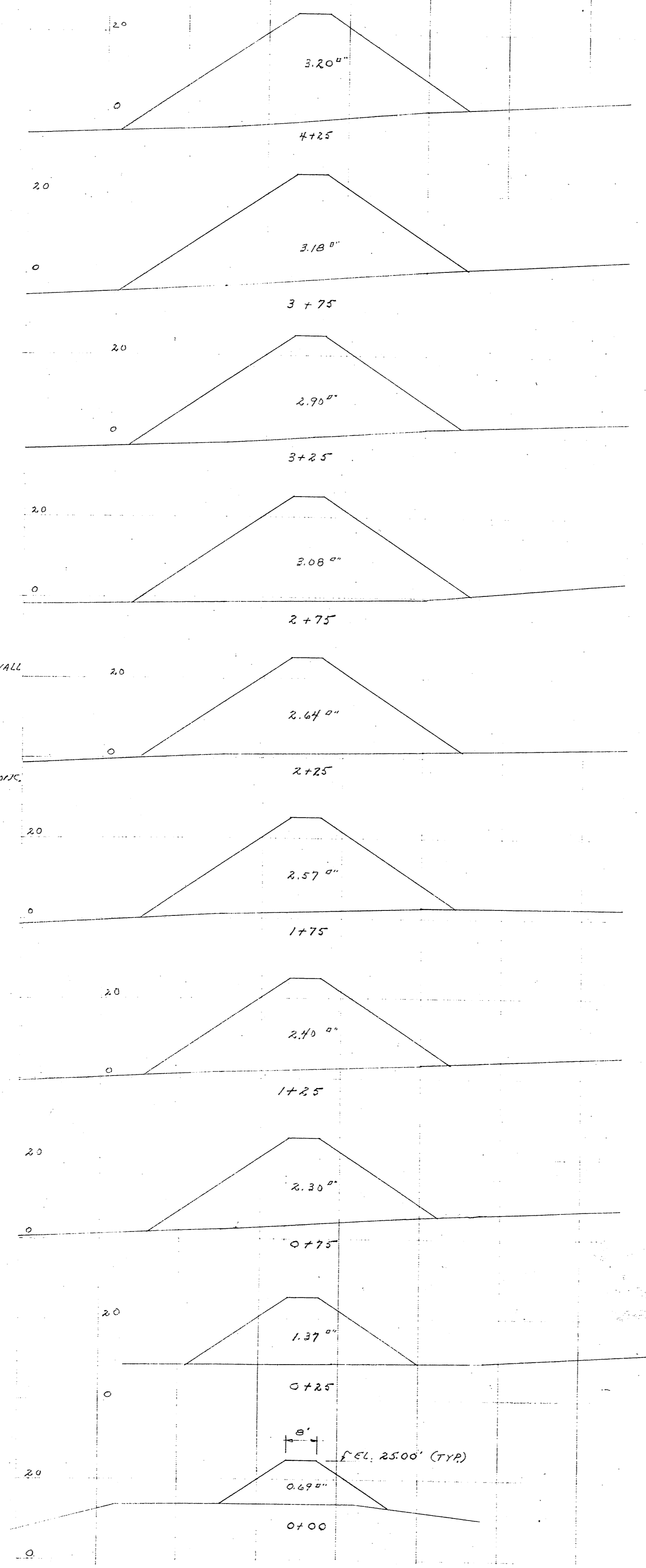
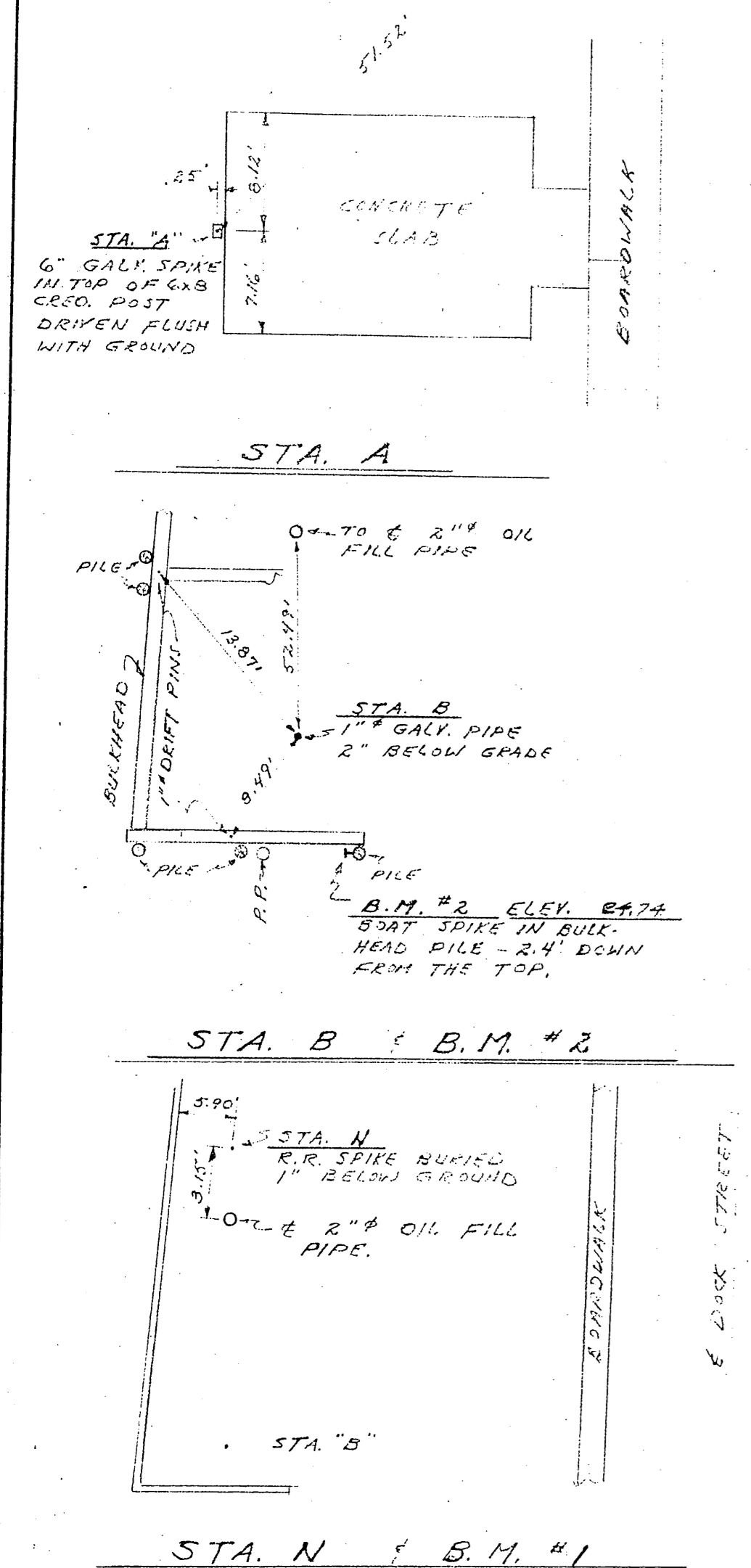
Scale: As Noted Sheet 2 of 8

Designed: F.J.T. APPROVED:
 Drawn: L.D.R.
 Checked: F.J.T. MAYOR
 JANUARY 1957 City of Skagway

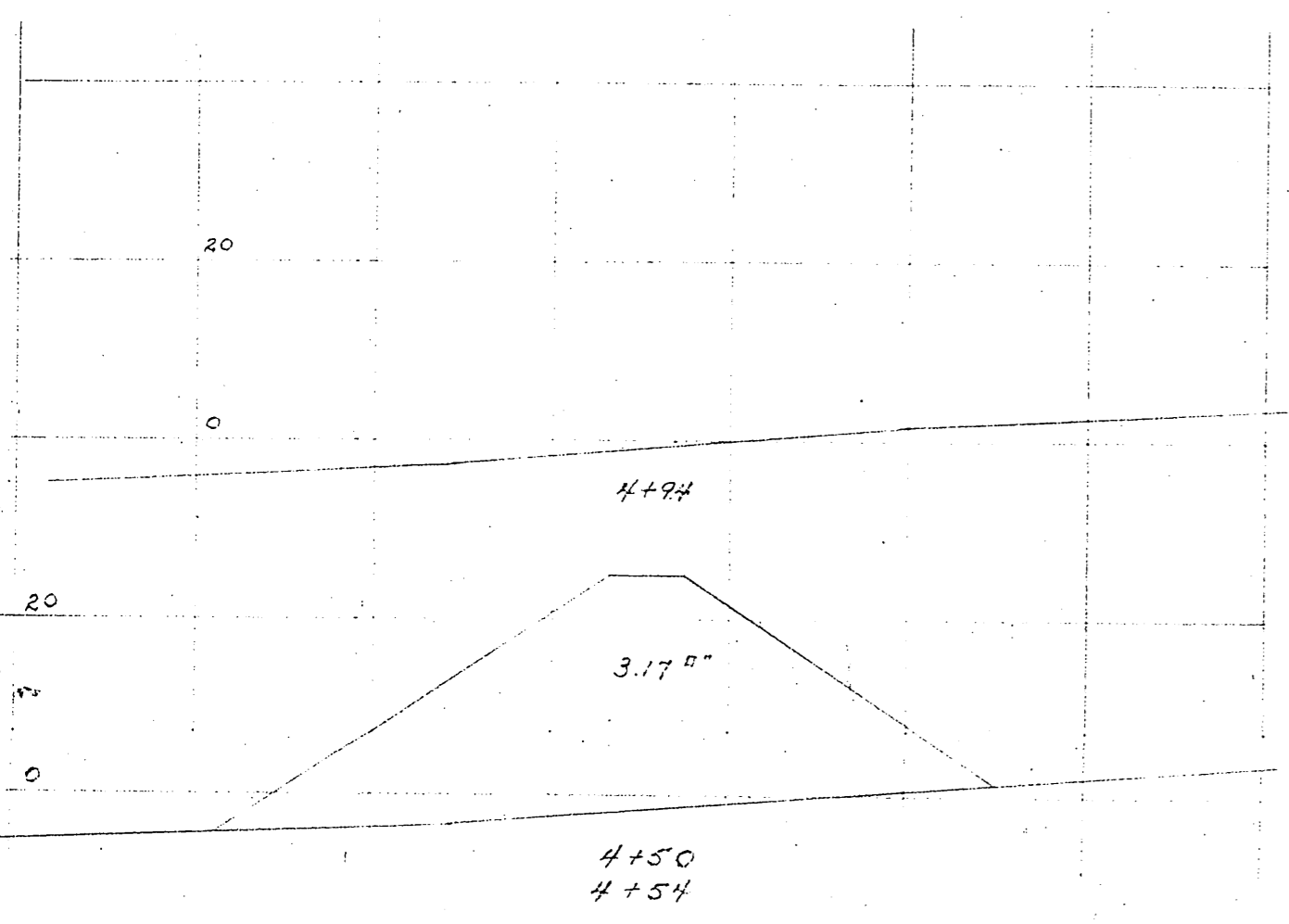
FELIX J. TONER, REGISTERED ENGINEER—JUNEAU, ALASKA

REVISIONS	
DATE	CHANGE
Aug. 53	PROJECT LIMITS & DREDGING DEPTH REVISED
Sept 53	AS CONSTRUCTED

72 E. TOP VJT
2 E. HYDRAULIC



DATE OF SURVEY - MAY 28, 1957



APPROVED for TERRITORY of ALASKA
By FRANK A. METCALF
ALASKA HIGHWAY COMMISSIONER
DATE: 7/1/57

These plans have been approved by the City Council and Mayor of SKAGWAY
Attest _____
City Clerk

AS CONSTRUCTED SEPT 1959

U.S. DEPARTMENT of the INTERIOR - OFFICE of TERRITORIES

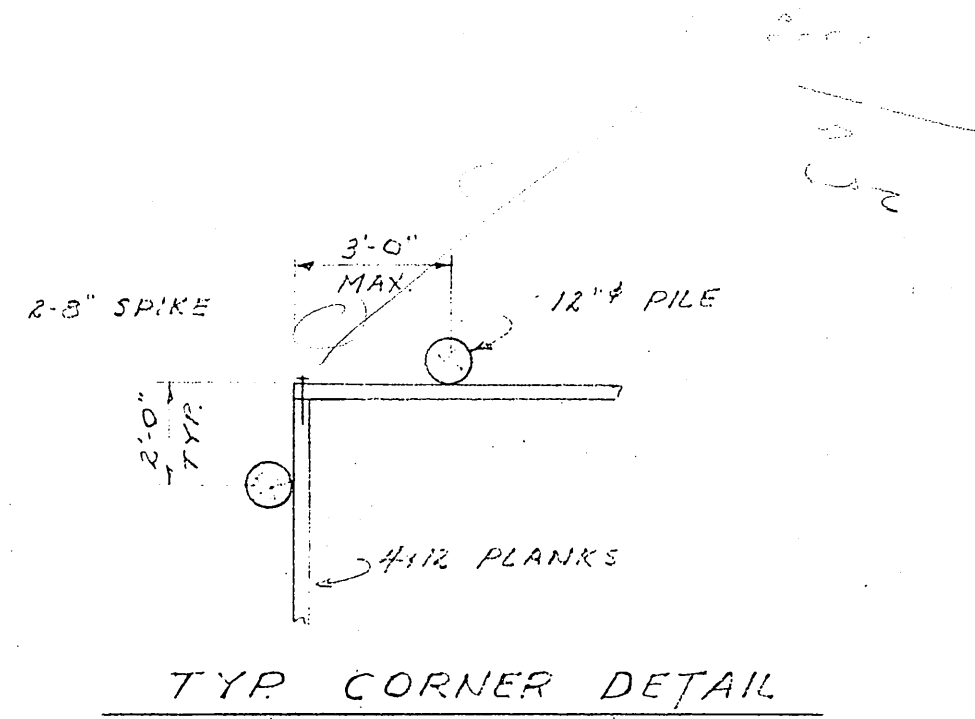
ALASKA PUBLIC WORKS
Project No. 50-A-261 SKAGWAY, ALASKA

PLANS & DETAILS
SKAGWAY BOAT HARBOR

Scale: As Noted Sheet 3 of 8

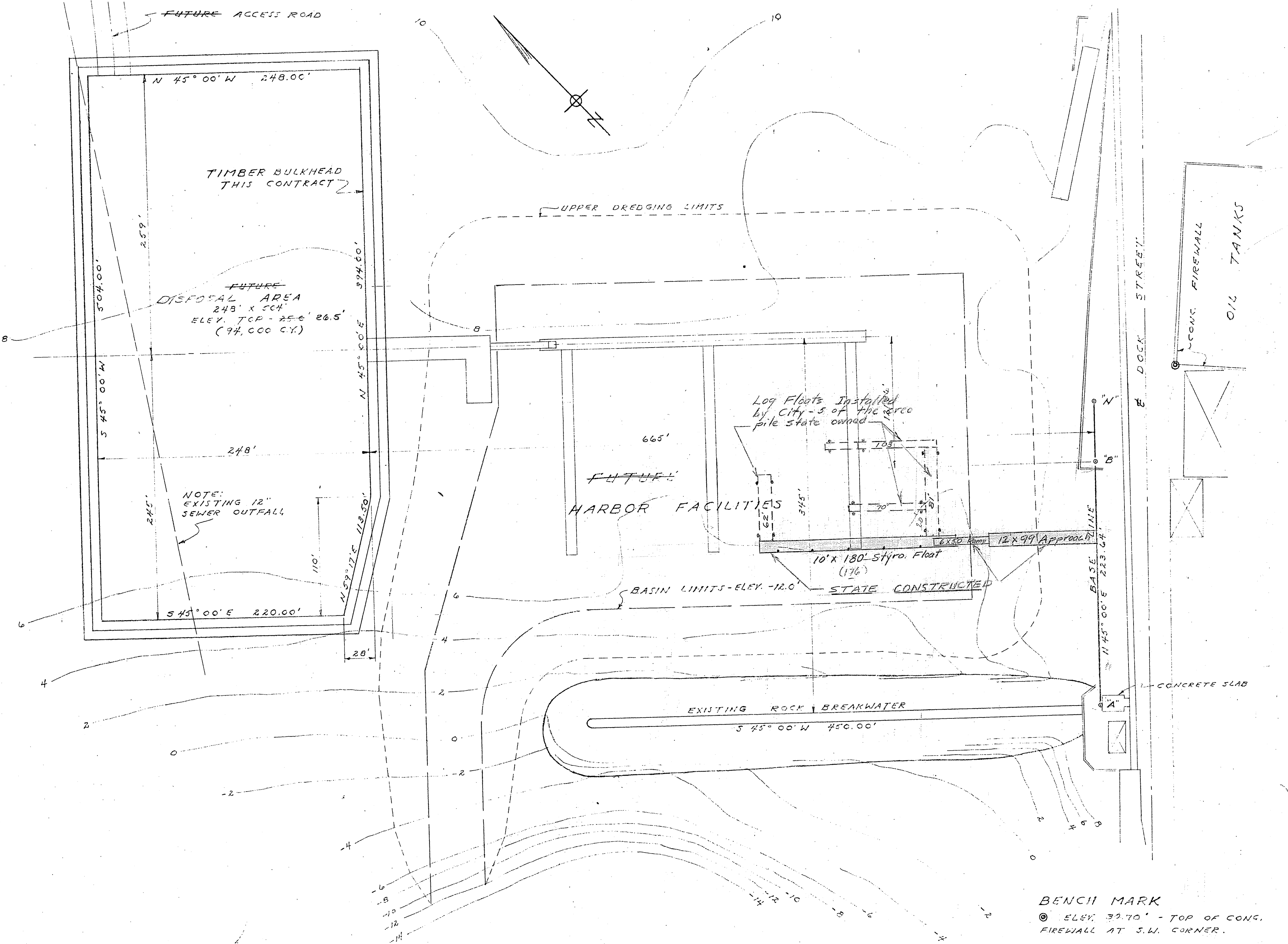
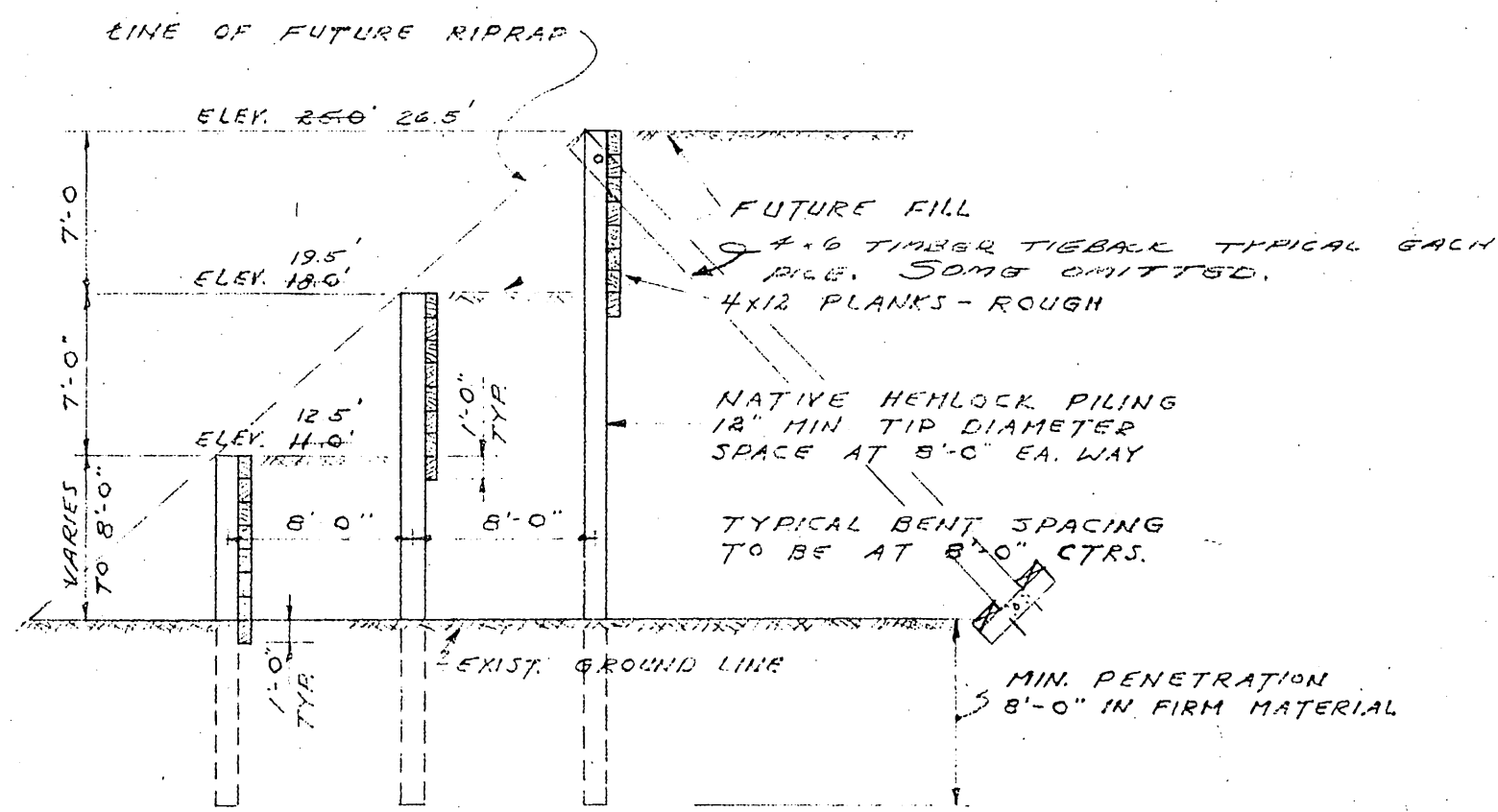
Designed: F.J.T. APPROVED: _____
Drawn: L.D.R. MAYOR
Checked: F.J.T. City of Skagway
JANUARY 1957

FE LIX J. TONER, REGISTERED ENGINEER - JUNEAU, ALASKA



BILL OF MATERIAL		
33,500 SQ. FT.	PLANKS 4x12 R	134,000 BD. FT.
	PILES	
NO.	SIZE	FOOTAGE
102	12" x 15'-0"	1,530 LIN. FT.
102	12" x 18'-0"	1,836 LIN. FT.
99	12" x 21'-0"	2,079 LIN. FT.
98	12" x 25'-0"	2,500 LIN. FT.
74	12" x 28'-0"	2,498 LIN. FT.
74	12" x 32'-0"	3,008 LIN. FT.
	TOTAL	13,641 LIN. FT.
	SPIKES	
	8" GALV. SPIKES	3,200 LBS.

NOTE: PILE LENGTHS ARE BASED ON 8'-0" PENETRATION AND A MIN. 2'-0" CUTOFF. QUANTITIES MAY BE VARIED TO SUIT FIELD CONDITIONS.



BENCH MARK
⊙ ELEV. 32.10' - TOP OF CONG. FIREWALL AT S.W. CORNER.

GENERAL NOTES - TIMBER BULKHEAD
 SCOPE OF THE WORK, THE WORK UNDER THIS CONTRACT SHALL INCLUDE FURNISHING THE MATERIALS AND CONSTRUCTING THE TIMBER BULKHEAD.
 FOUNDATION MATERIAL, THE UNDERLYING MATERIAL IN THE PROJECT AREA IS COMPOSED OF SAND AND SANDY GRAVEL.
 PILES, ALL PILES SHALL BE NATIVE HEMLOCK WITH A MINIMUM TIP DIAMETER OF 12" IF PILES SHALL BE DRIVEN TO A MINIMUM PENETRATION OF 8'-0" IF SOFT AREAS ARE ENCOUNTERED, PILES SHALL BE DRIVEN UNTIL THE DRIVING RESISTANCE IS 1" PER PER BLOW (USING A 3000# HAMMER).
 PLANKS, BULKHEAD PLANKS SHALL BE HEMLOCK, NO. 1 COMMON OR BETTER, ROUGH, PLANKS SHALL BE FURNISHED IN 16' AND 24' LENGTHS, PLANKS SHALL BE NAILED TO PILES AT EACH CONTACT POINT WITH 2-8" GALVANIZED SPIKES. SPLICE POINTS SHALL BE STAGGERED.

As Built
 As Constructed - SEPT 1959

U.S. DEPARTMENT of the INTERIOR - OFFICE of TERRITORIES
 ALASKA PUBLIC WORKS
 Project No. 50-A-261 SKAGWAY, ALASKA

TIMBER BULKHEAD
 SKAGWAY BOAT HARBOR

Scale: As Noted Sheet 4 of 8

Designed: F. J. T. APPROVED: _____
 Drawn: L. D. R.
 Checked: F. J. T. Mayor, City of Skagway
 JANUARY 1957

FELIX J. TONER, REGISTERED ENGINEER - JUNEAU, ALASKA