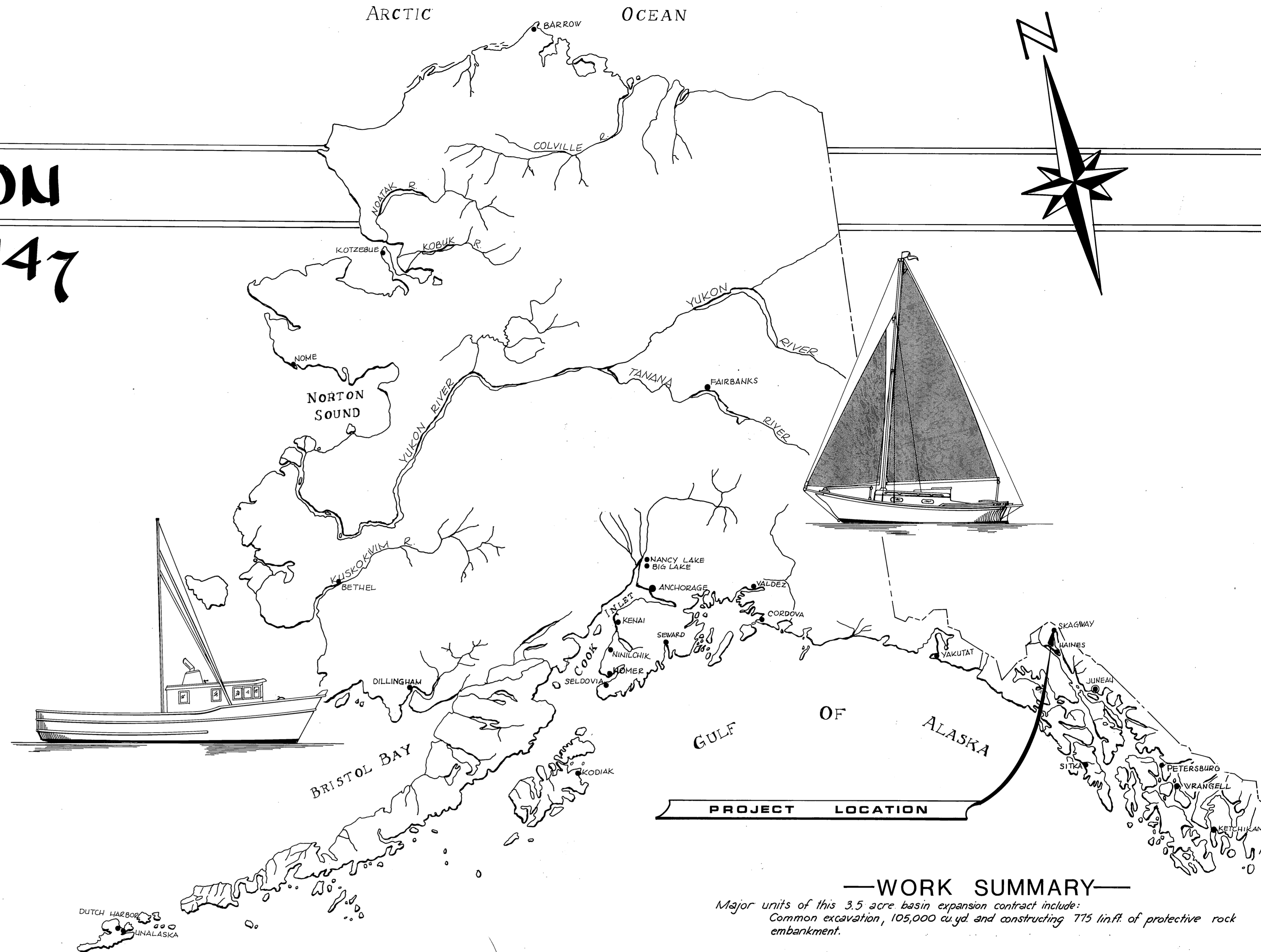


# SKAGWAY HARBOR EXPANSION PROJECT NO. 3-78147



—WORK SUMMARY—

Major units of this 3.5 acre basin expansion contract include:  
Common excavation, 105,000 cu.yd. and constructing 775 lin.ft. of protective rock  
embankment.

**INDEX TO SHEETS**

1	TITLE & LOCATION		
2	BOAT HARBOR EXPANSION		
3	LOCATION MAP & SECTIONS		

STATE  
OF  
ALASKA

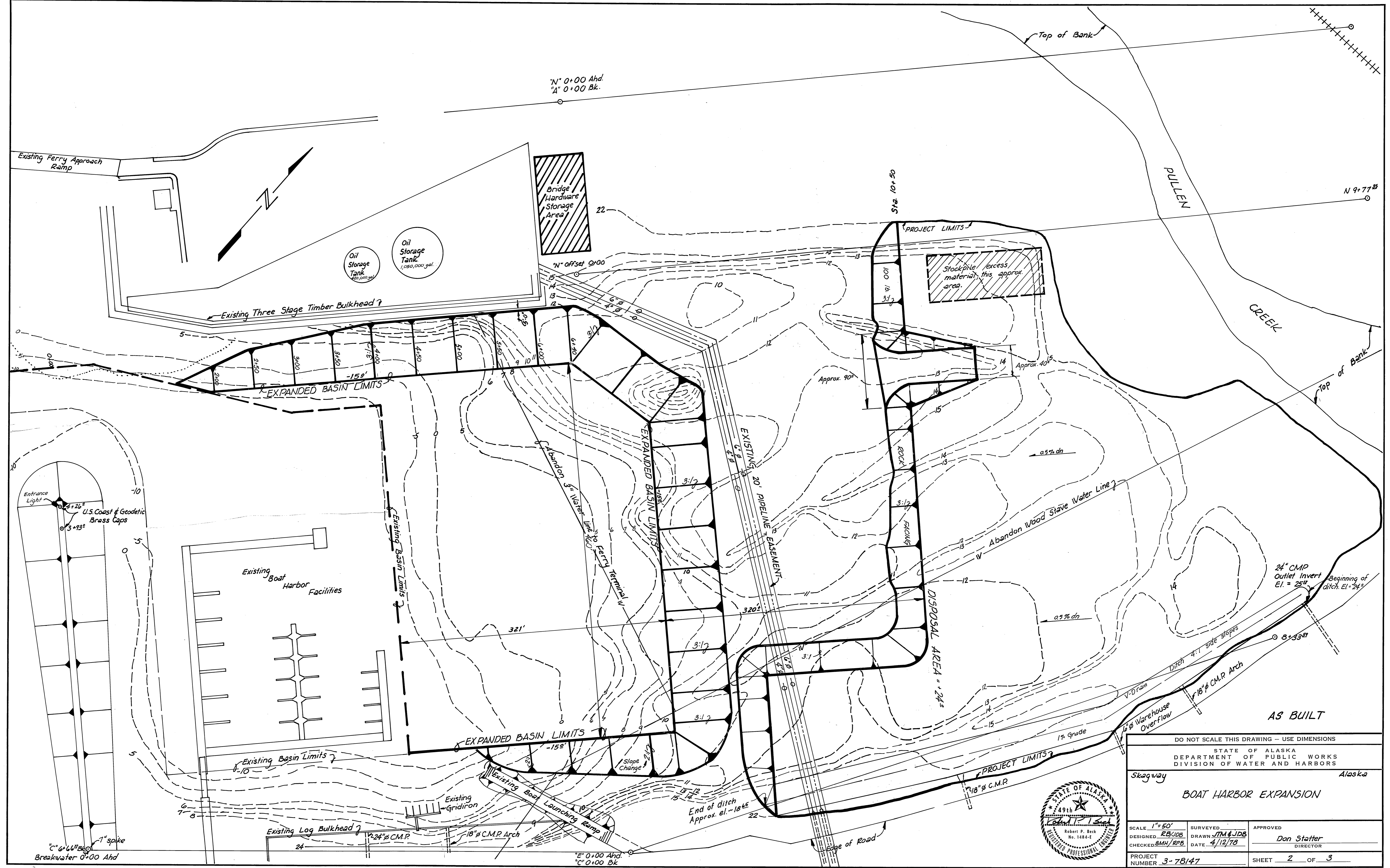
DEPARTMENT OF TRANSPORTATION & PUBLIC FACILITIES  
**DIVISION OF HARBOR  
DESIGN & CONSTRUCTION**

APPROVED

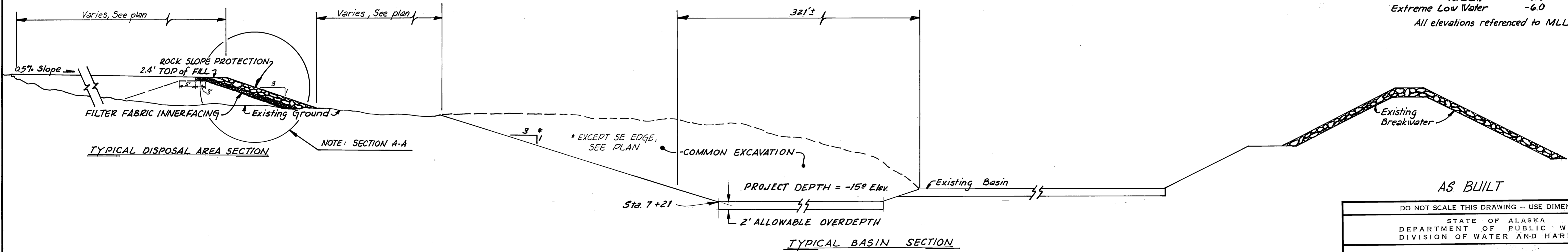
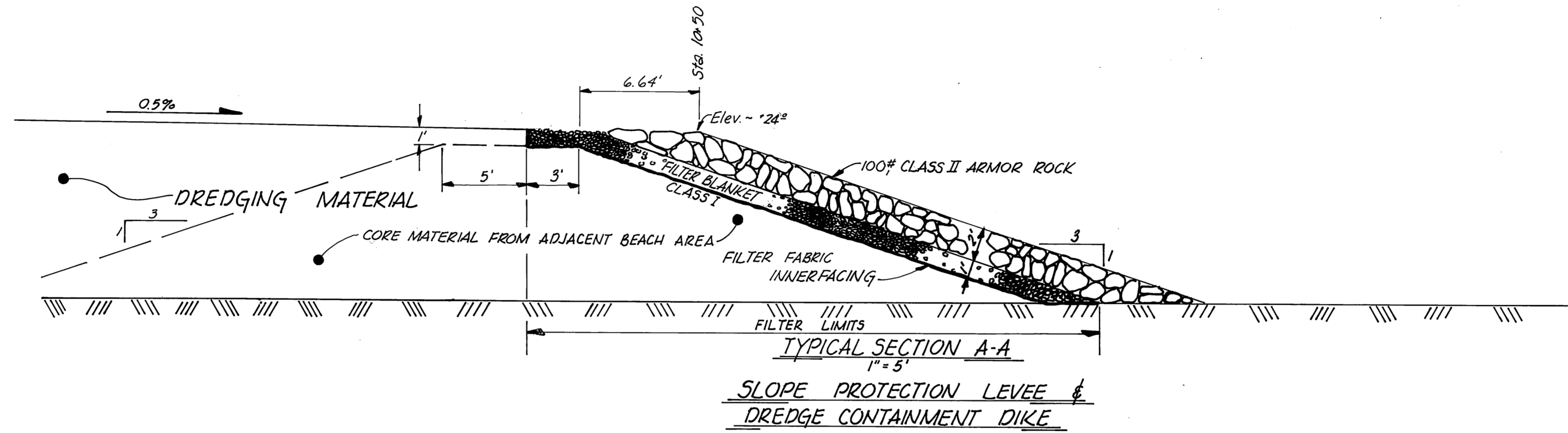
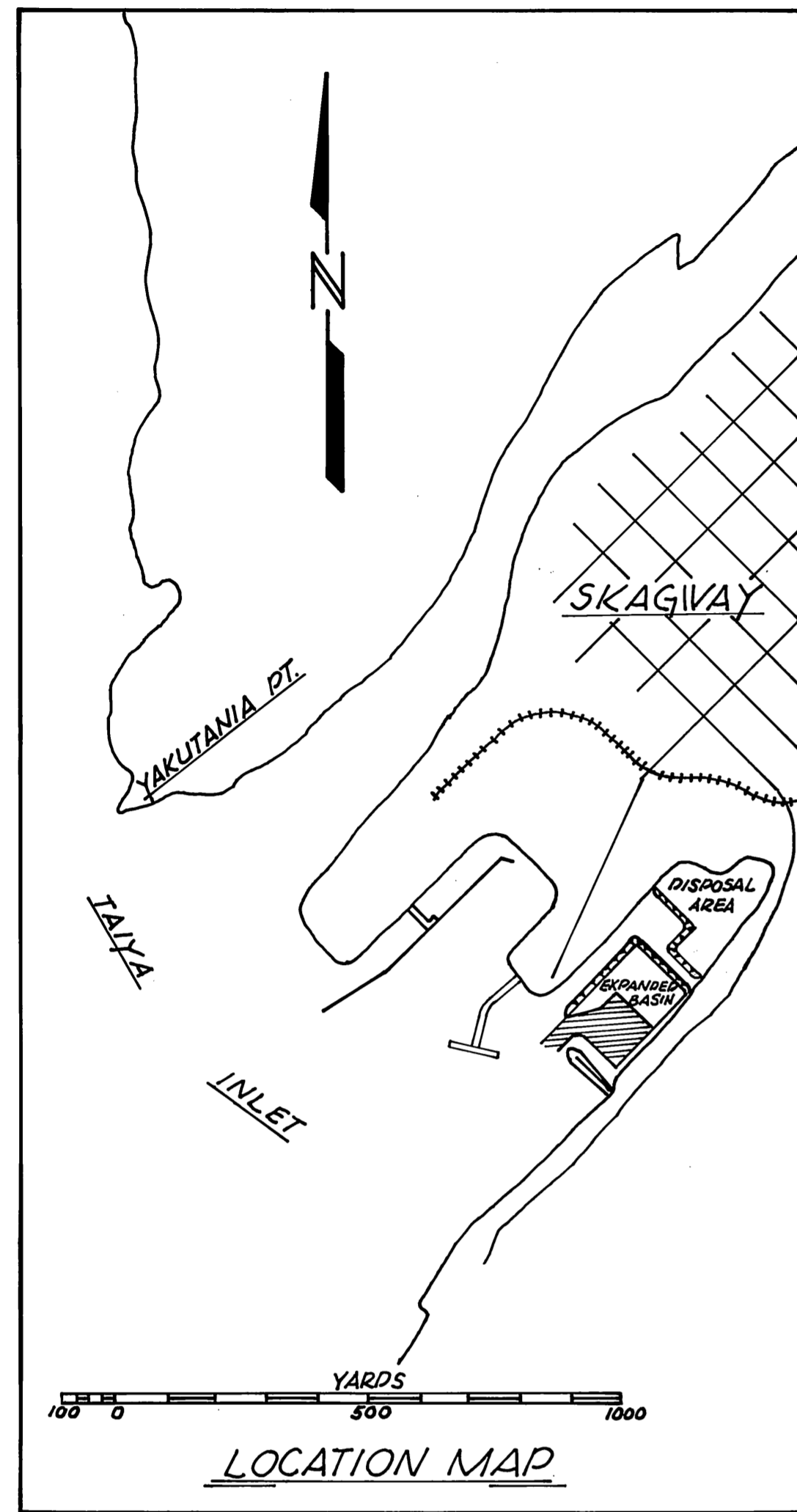
*Wm. Stutter*

DATE 5/24/78

SHEET 1 OF 3



DO NOT SCALE THIS DRAWING - USE DIMENSIONS		
STATE OF ALASKA DEPARTMENT OF PUBLIC WORKS DIVISION OF WATER AND HARBORS		
Skagway		Alaska
<b>BOAT HARBOR EXPANSION</b>		
SCALE: 1" = 50'	SURVEYED: _____	APPROVED: _____
DESIGNED: RBJ/DB	DRAWN: JTM & JDB	Robert P. Beck No. 1484-E REGISTERED PROFESSIONAL ENGINEER
CHECKED: BMH/REP	DATE: 4/12/78	Don Statter DIRECTOR
PROJECT NUMBER: 3-78147	SHEET 2 OF 3	

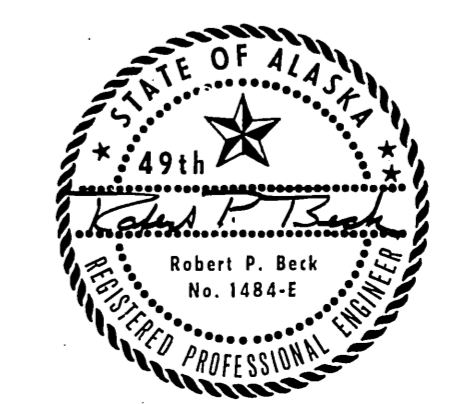


TIDAL DATA

Extreme High Water	23.4
MHHW	16.7
MHW	15.7
MLW	1.6
MLLW	0.0
Extreme Low Water	-6.0

All elevations referenced to MLLW

TYPICAL SECTIONS  
1" = 15'



DO NOT SCALE THIS DRAWING - USE DIMENSIONS		
STATE OF ALASKA DEPARTMENT OF PUBLIC WORKS DIVISION OF WATER AND HARBORS		
LOCATION MAP TYPICAL SECTIONS		
SCALE: As noted	SURVEYED:	APPROVED:
DESIGNED: RB/JDB	DRAWN: JTM & JDB	Don Statter
CHECKED: BMH/RPB	DATE: 4/13/78	DIRECTOR
PROJECT NUMBER: 3-78147	SHEET 3 OF 3	