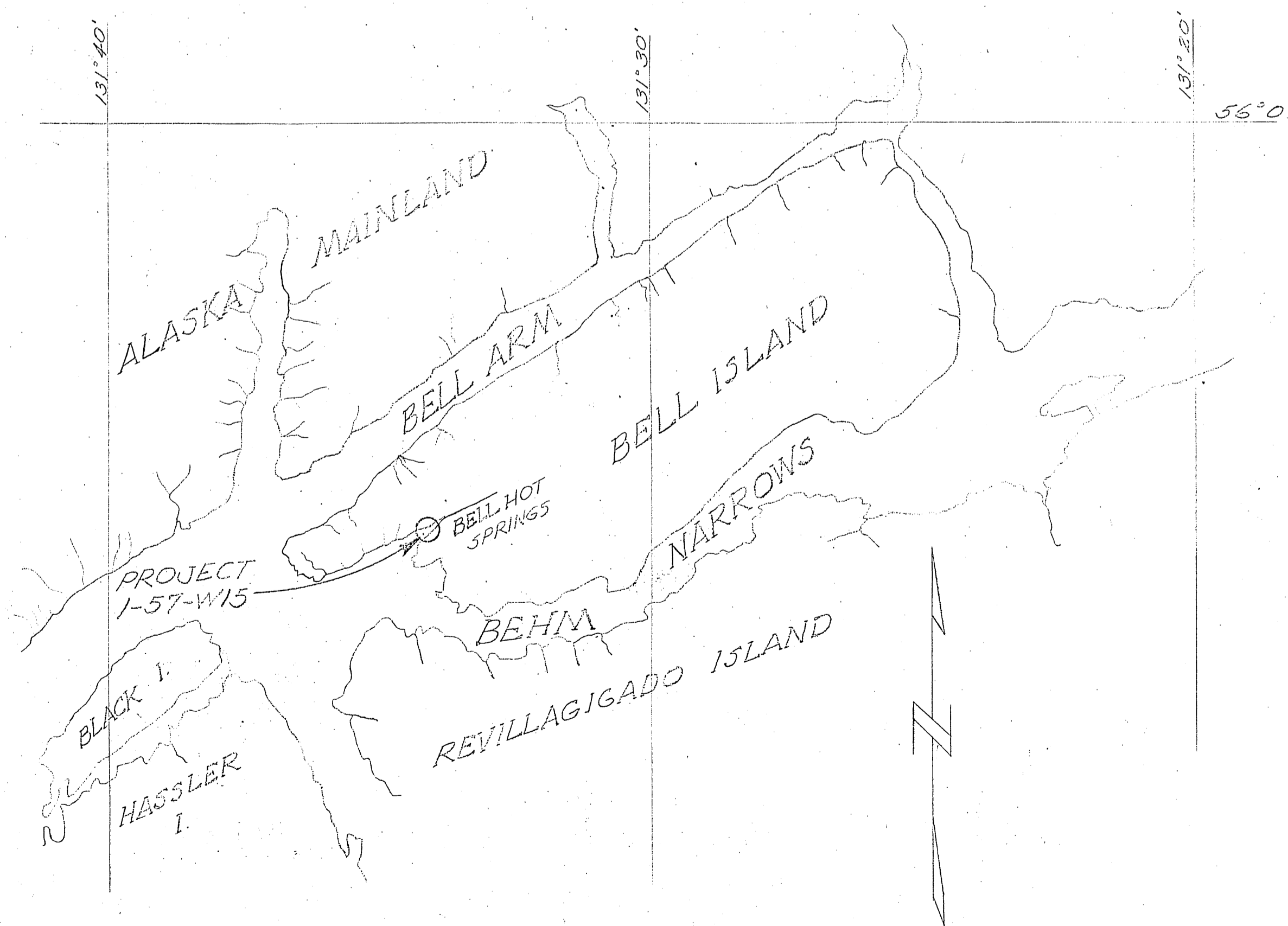
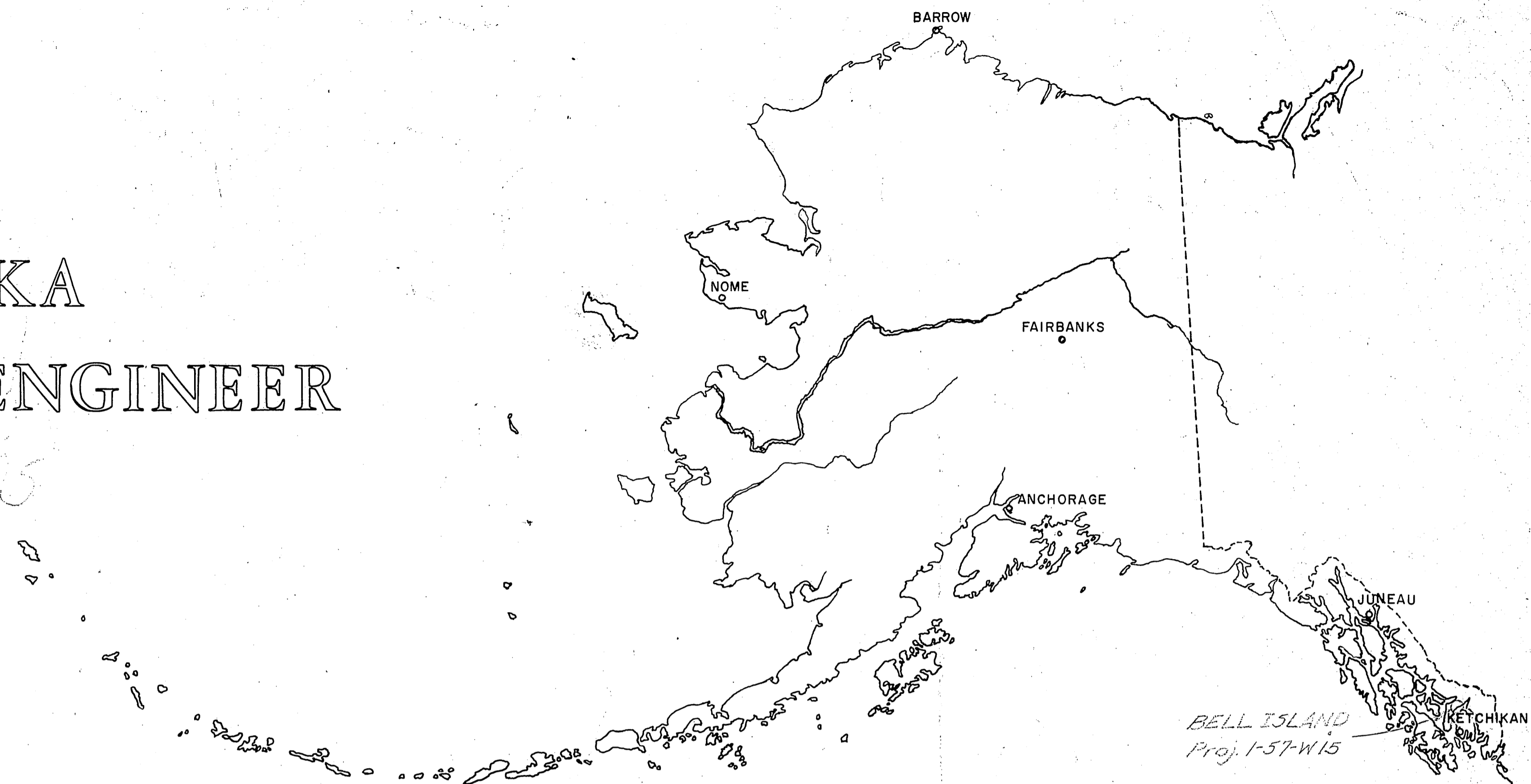


TERRITORY OF ALASKA  
 OFFICE OF THE HIGHWAY ENGINEER  
*BELL ISLAND FLOAT FACILITIES*  
*PROJECT 1-57-W15*



WORK SUMMARY

Major units of this project shall include the construction of a float 16' x 53' and the construction of a float 16' x 102'.

Exact location & orientation of these units & anchors to be determined by the engineer.

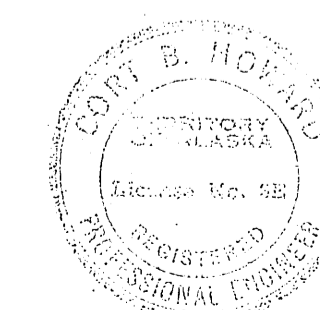
STANDARD SYMBOLS

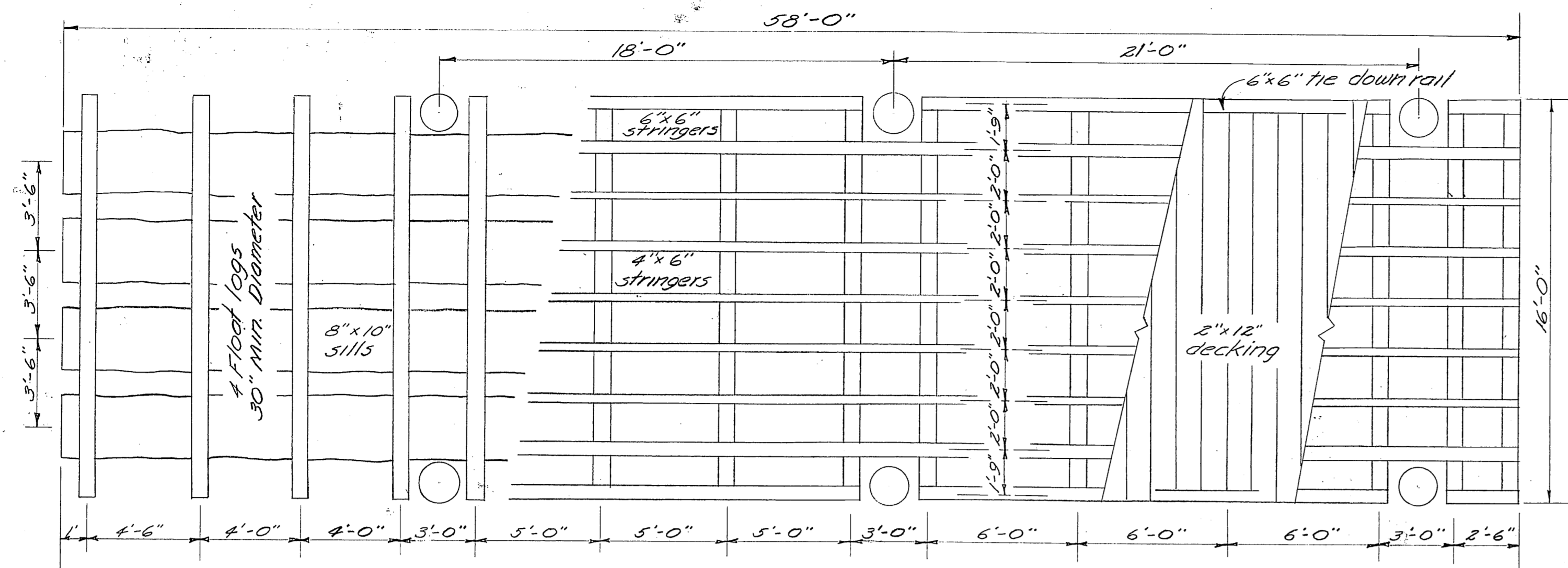
TREE	
POWER POLE	
TELEPHONE POLE	
FENCE	
SECTION LINE	
RIGHT OF WAY LINE	

AS BUILT

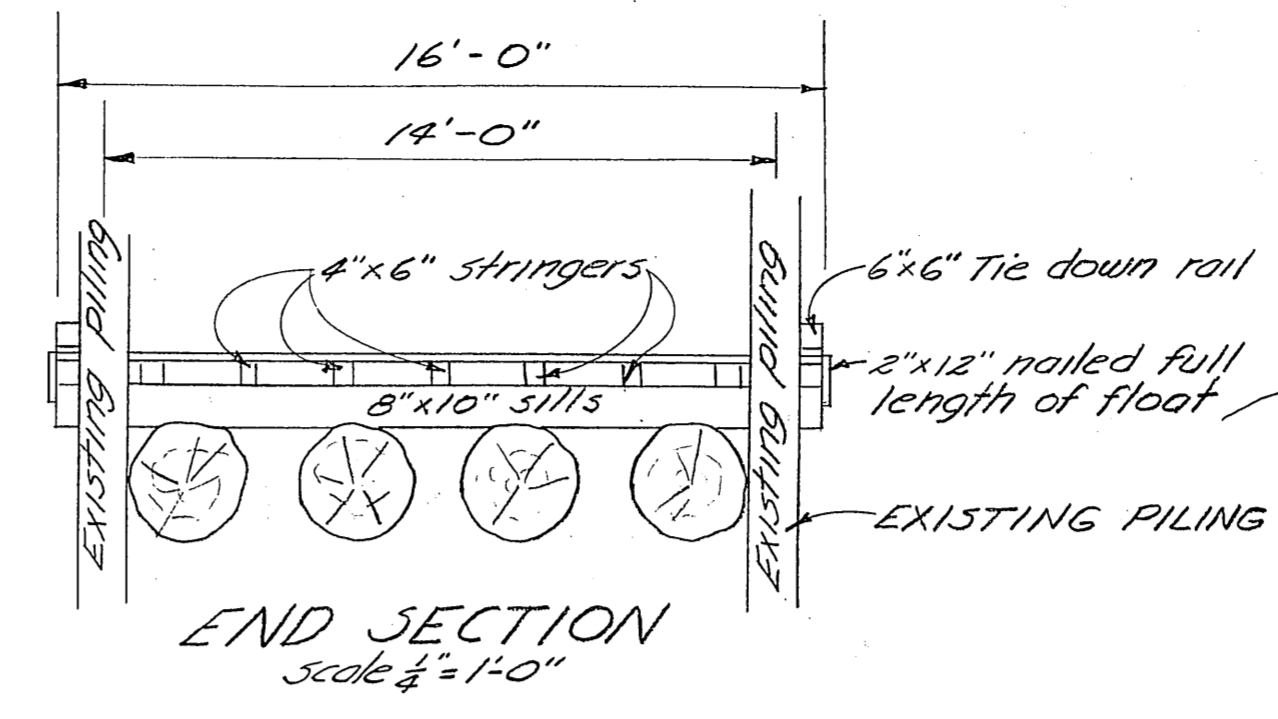
INDEX TO SHEETS

TITLE SHEET	1
PLAN — PROFILE	
TYPICAL SECTIONS and DETAILS	2

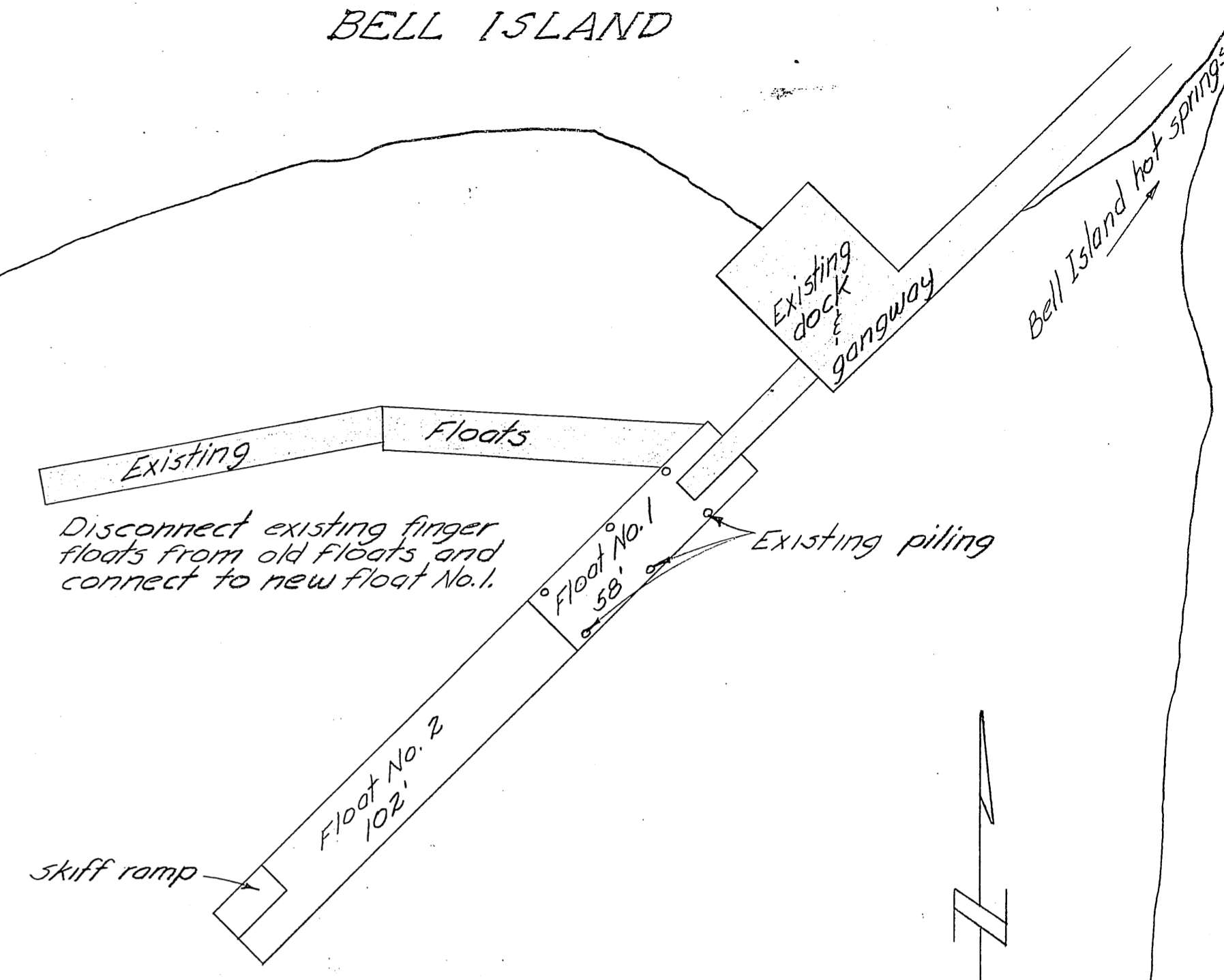




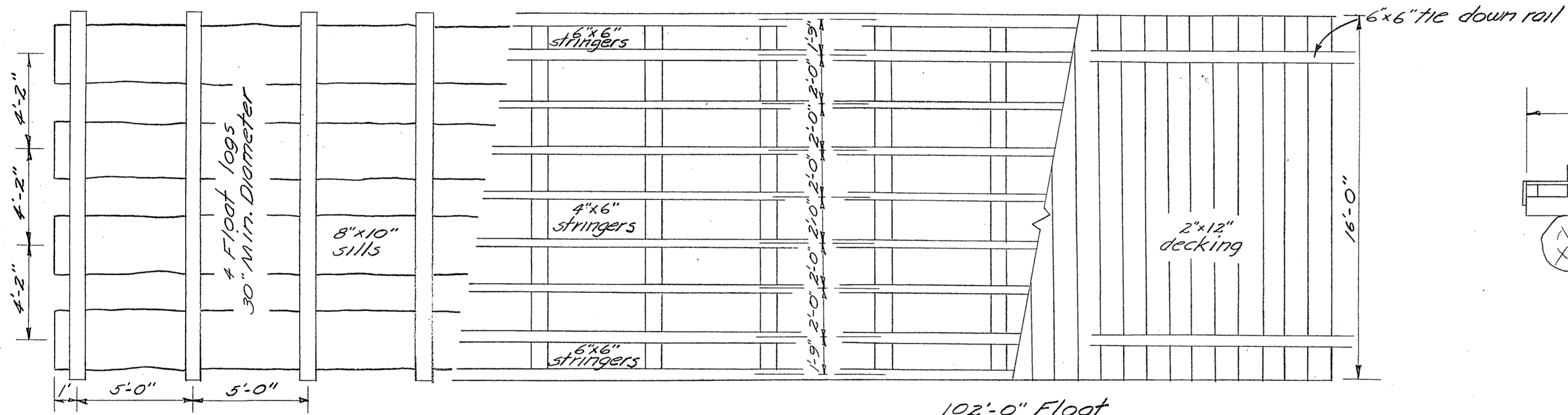
FLOAT NO. 1 PLAN  
scale 1/4" = 1'-0"  
-NOTE- PILING ARE EXISTING



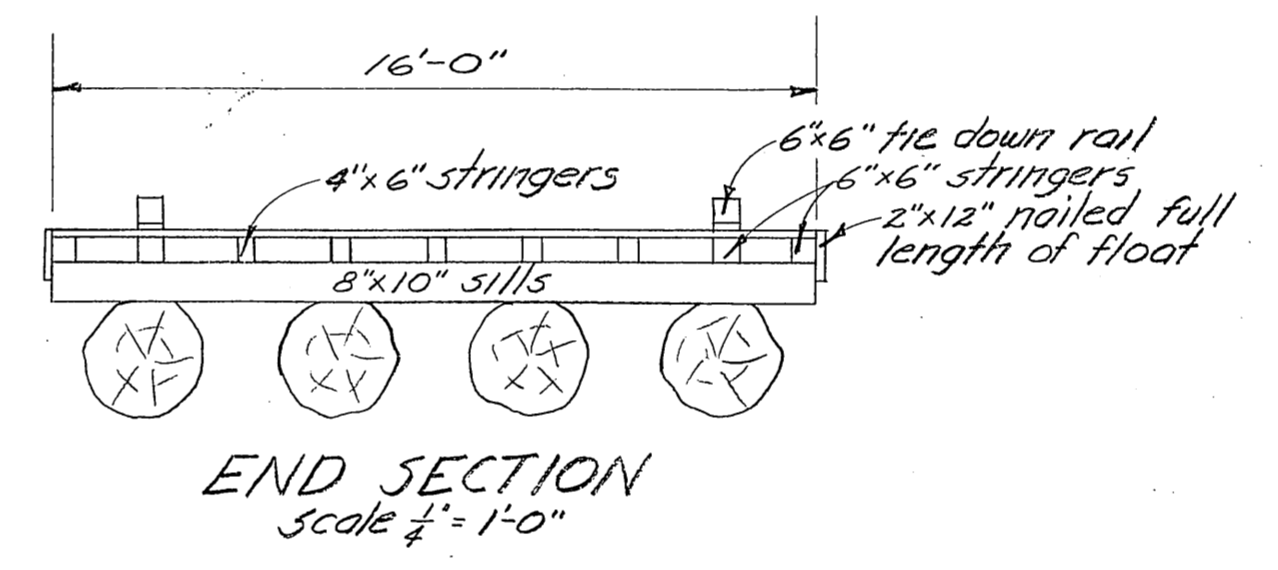
END SECTION  
scale 1/4" = 1'-0"



LOCATION MAP  
scale 1" = 30'

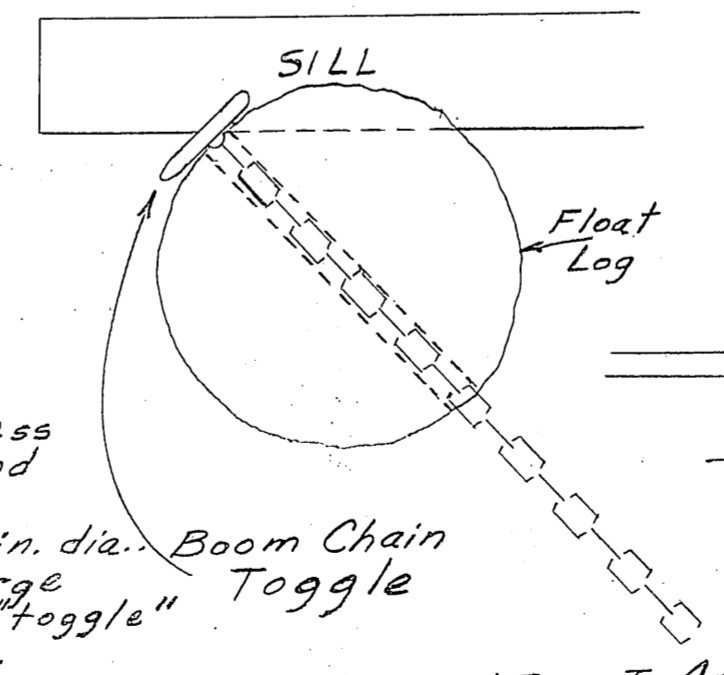
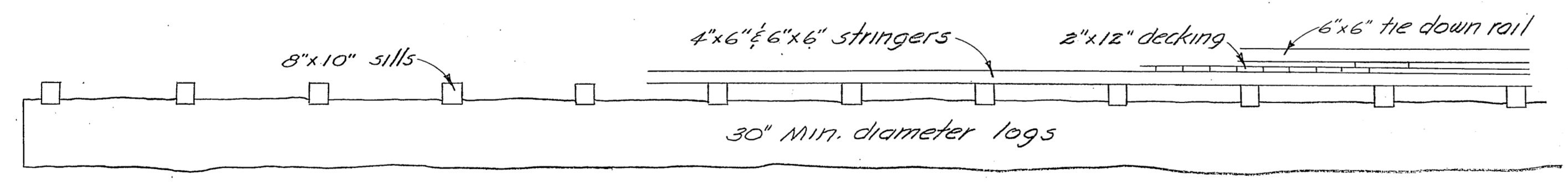


FLOAT NO. 2 PLAN  
scale 1/4" = 1'-0"

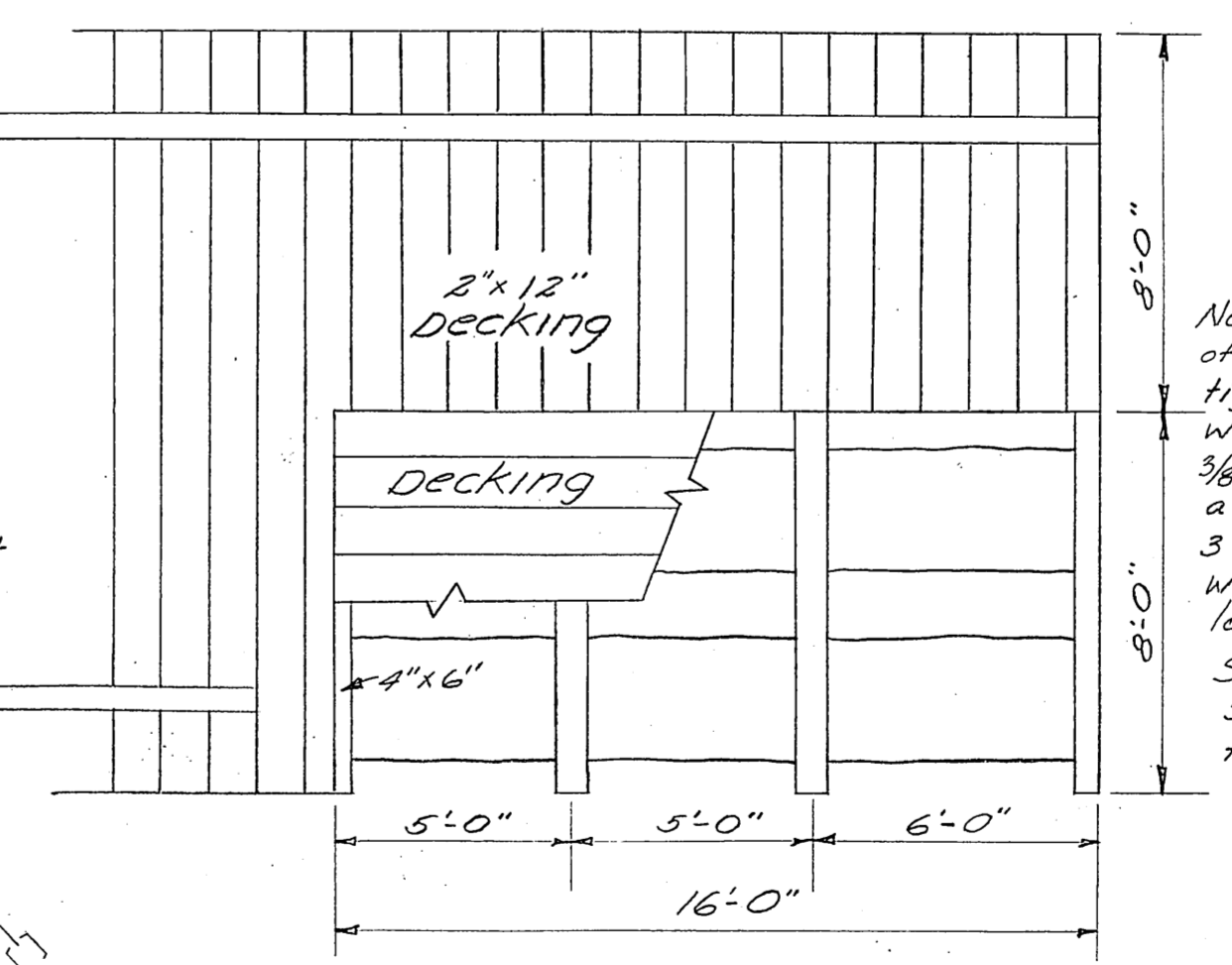


END SECTION  
scale 1/4" = 1'-0"

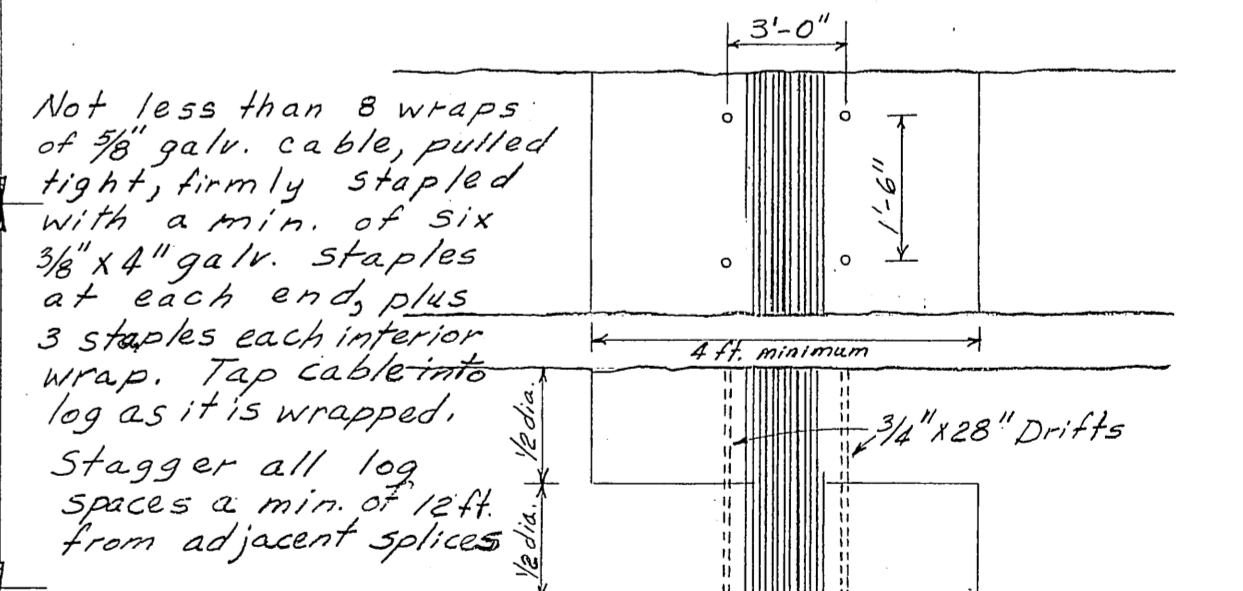
NOTE  
All sawed timbers and float logs to be treated with 'cuprinol'.  
Anchor line to be secured to float as directed by the engineer.



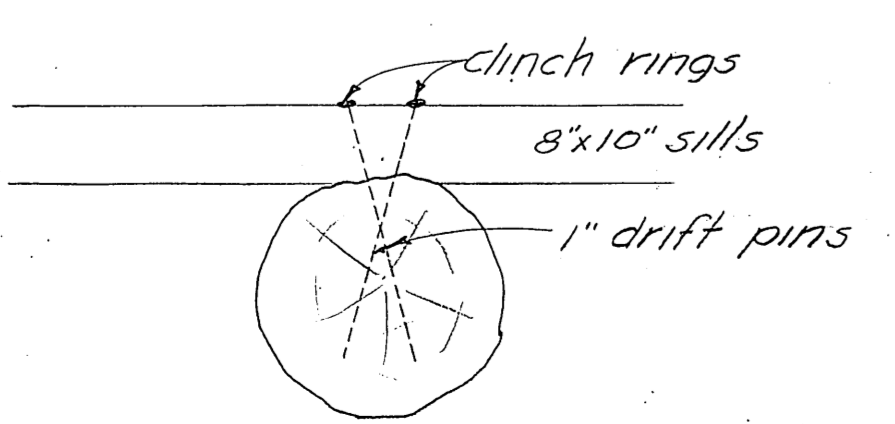
ANCHOR LINE CONNECTION  
No SCALE



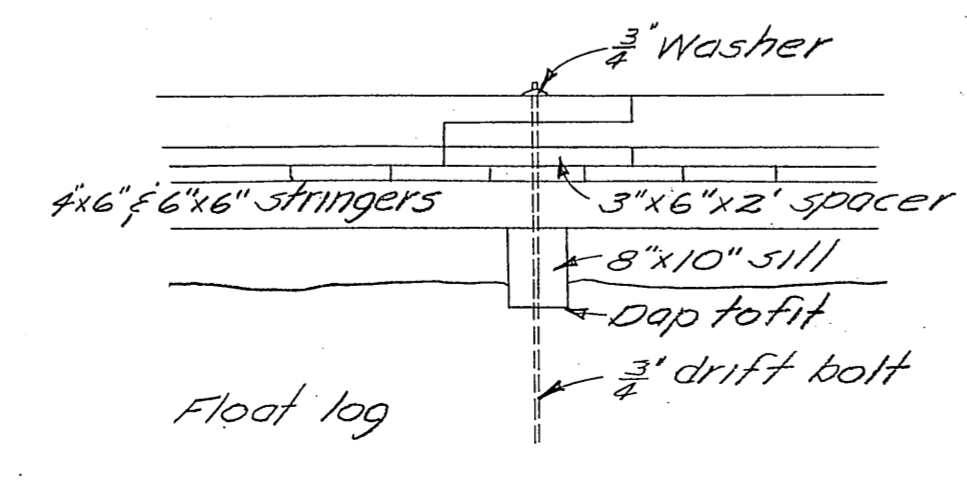
SKIFF RAMP DETAILS  
scale 1/4" = 1'-0"  
Build skiff ramp on end of float No. 2.



LOG SPLICE DETAIL  
No Scale



DRIFT PIN DETAIL  
scale 1/2" = 1'-0"



SPLICE DETAIL  
scale 1/2" = 1'-0"

TERRITORY OF ALASKA OFFICE OF THE HIGHWAY ENGINEER	
Construction Plans FLOAT DETAILS Bell Island, Alaska	
SCALE As Noted DATE 5 June 57 FILE NO. 1-57-1115	APPROVED TERRITORIAL HWY. ENGINEER