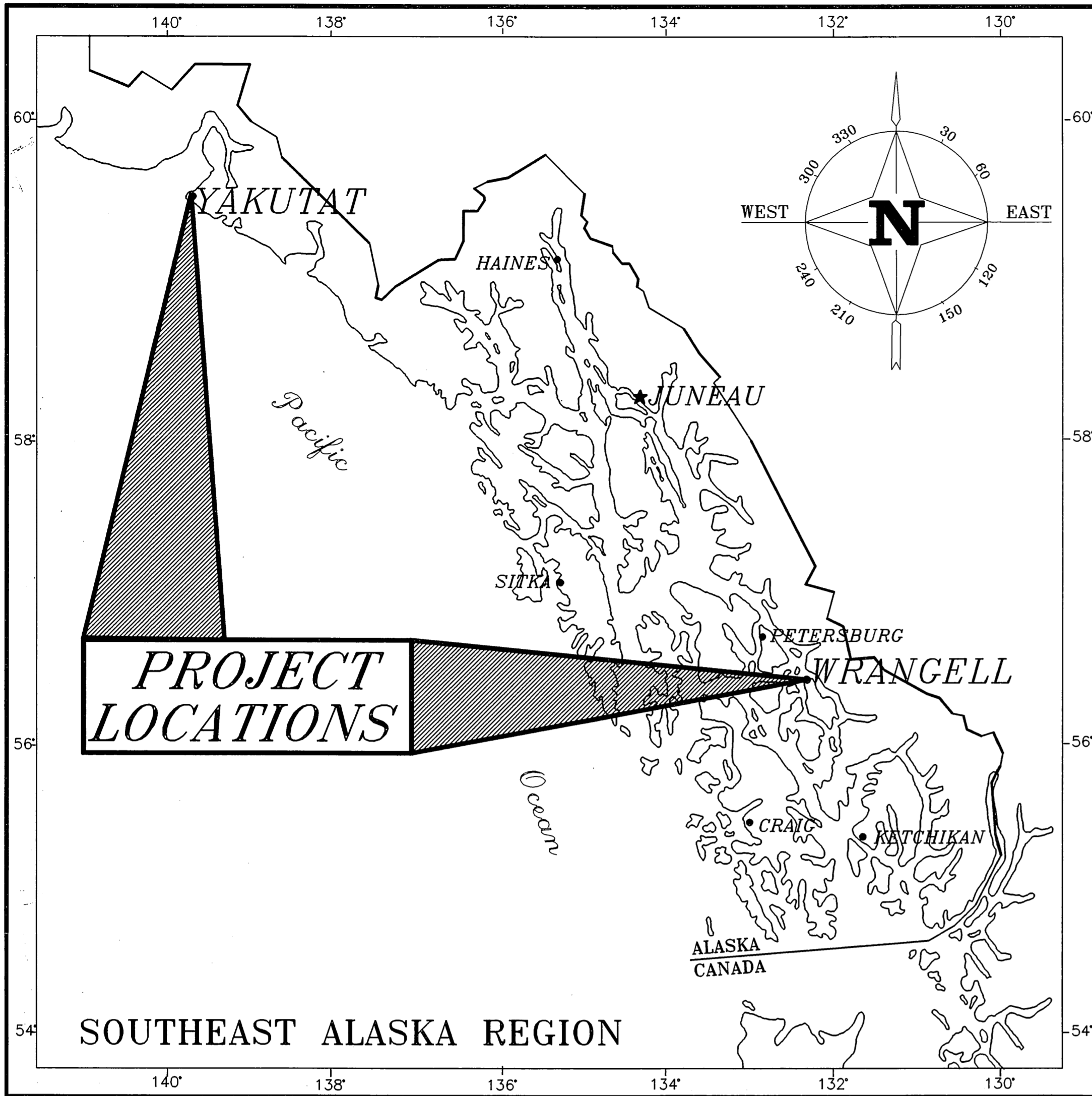


STATE OF ALASKA  
 DEPARTMENT OF TRANSPORTATION  
 AND  
 PUBLIC FACILITIES  
 SOUTHEAST REGION  
 DESIGN AND CONSTRUCTION DIVISION

| INDEX OF SHEETS |                         |
|-----------------|-------------------------|
| SHEET NO.       | DESCRIPTION             |
| 1               | TITLE SHEET             |
| 2               | WRANGELL AIRPORT LAYOUT |
| 3               | YAKUTAT AIRPORT LAYOUT  |
| 4               | DETAIL SHEET            |



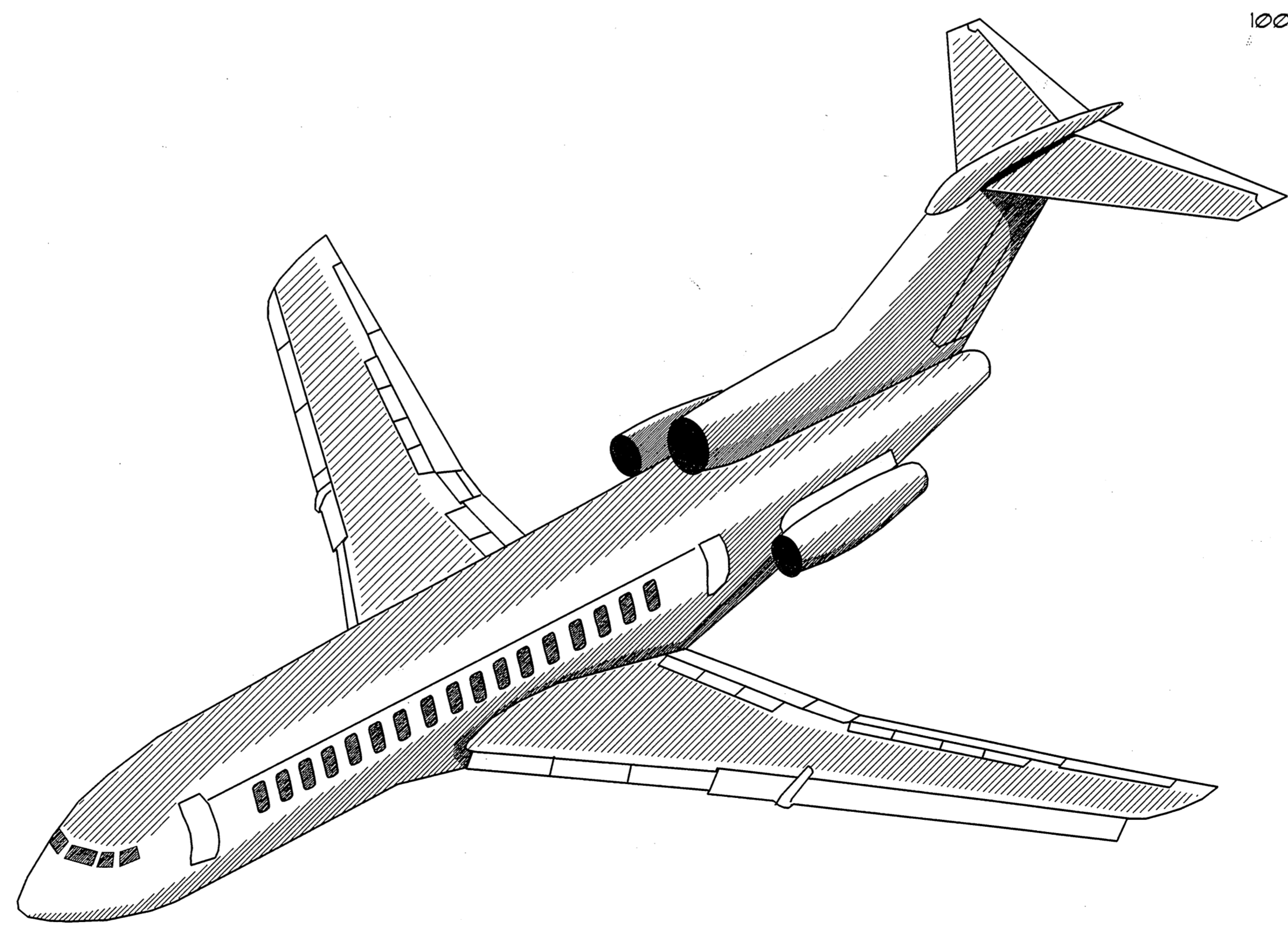
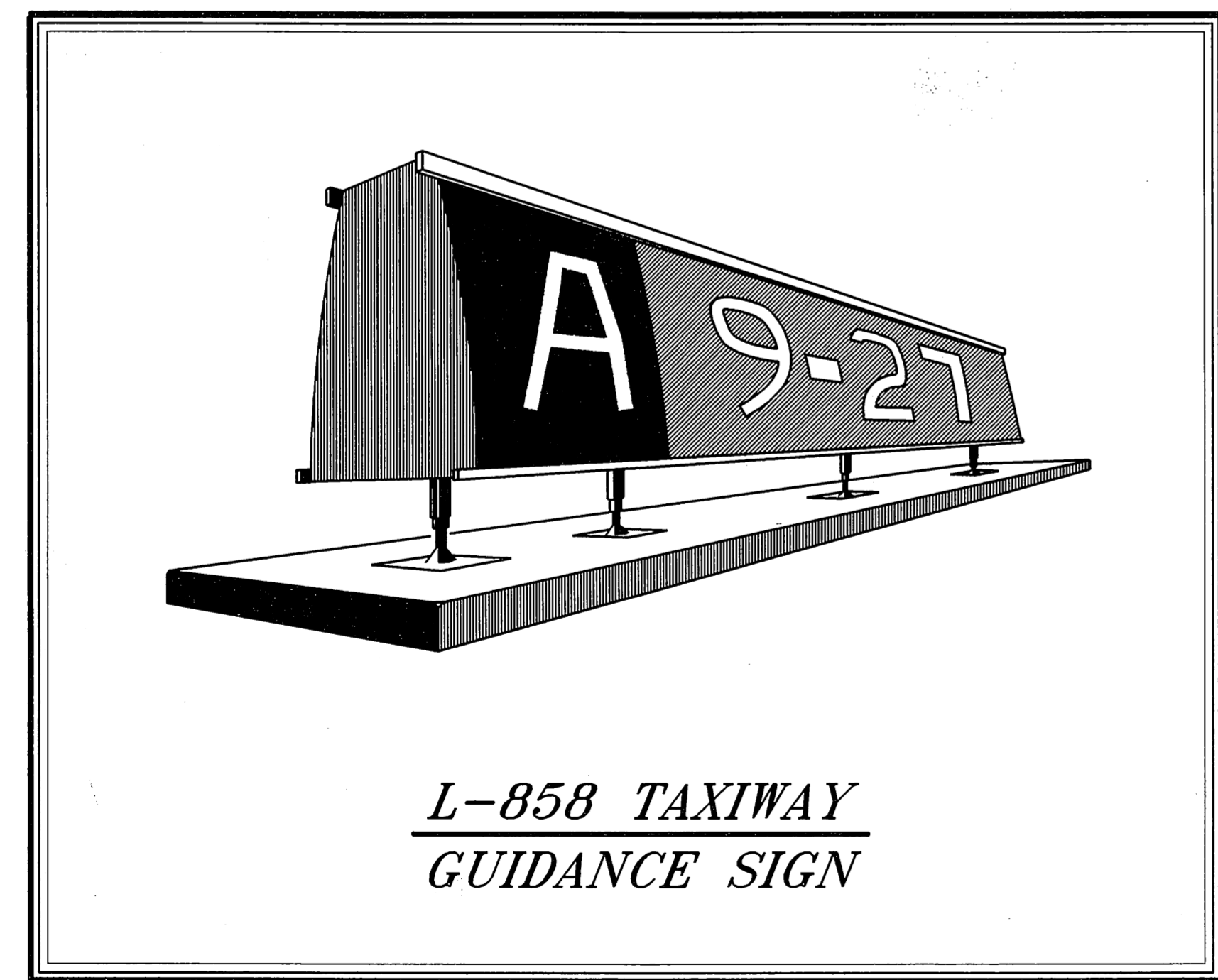
**SOUTHEAST REGIONAL  
 AIRPORT SIGNAGE**

PROJECT NO. 71403

A.I.P. NO. 3-02-0000-08

YAKUTAT AIRPORT AND WRANGELL AIRPORT

| ESTIMATE OF QUANTITIES |   |           |         |          |                     |
|------------------------|---|-----------|---------|----------|---------------------|
| PAY ITEM NUMBER        | ITEM                                      | UNIT      | YAKUTAT | WRANGELL | TOTAL               |
| 100                    | Mobilization & Demobilization             | All Req'd | -       | -        | All Req'd           |
| 120                    | DBE Adjustment (all req'd)                | Cont. Sum | -       | -        | Cont. Sum           |
| 1000r                  | New Single Module Airport Sign            | Each      | 3       | 2        | 5                   |
| 1000s                  | New Double Module Airport Sign            | Each      | 5       | 4        | 9                   |
| 1000t                  | Trench, Conduit & Cable                   | L.F.      | 500     | 100      | 668                 |
| 1000u                  | Relocate exist. Airport Sign.             | Each      | -       | 1        | 1                   |
| 1000v                  | New Airport Sign Face                     | Each      | 2       | -        | 2                   |
| 1000                   | NEW DOUBLE MODULE AIRPORT SIGN ADJUSTMENT | L.S.      | -       | -        | \$561.00 ALL REQ'D. |



**AS-BUILT PLANS**

CONTRACTOR: .....GILCO CONSTRUCTION, INC.  
 PROJECT ENGINEER: .....SOC KREUZENSTEIN  
 BEGIN DATE: .....JUNE 20, 1994  
 END DATE: .....JULY 25, 1994

STATE OF ALASKA  
 DEPARTMENT OF TRANSPORTATION  
 AND  
 PUBLIC FACILITIES  
 SOUTHEAST REGION DESIGN SECTION

APPROVED \_\_\_\_\_ Date \_\_\_\_\_  
 Regional Preconstruction Engineer

APPROVED \_\_\_\_\_ Date \_\_\_\_\_  
 Director, S.E. Region Design & Construction

|                                 |                 |
|---------------------------------|-----------------|
| PROJECT NUMBER:<br><b>71403</b> | ENGINEER'S SEAL |
| DATE:                           |                 |
| SHEET <b>1</b> OF <b>4</b>      |                 |

P:\REGION\APSIGNS\DR\TSHEET 1-1

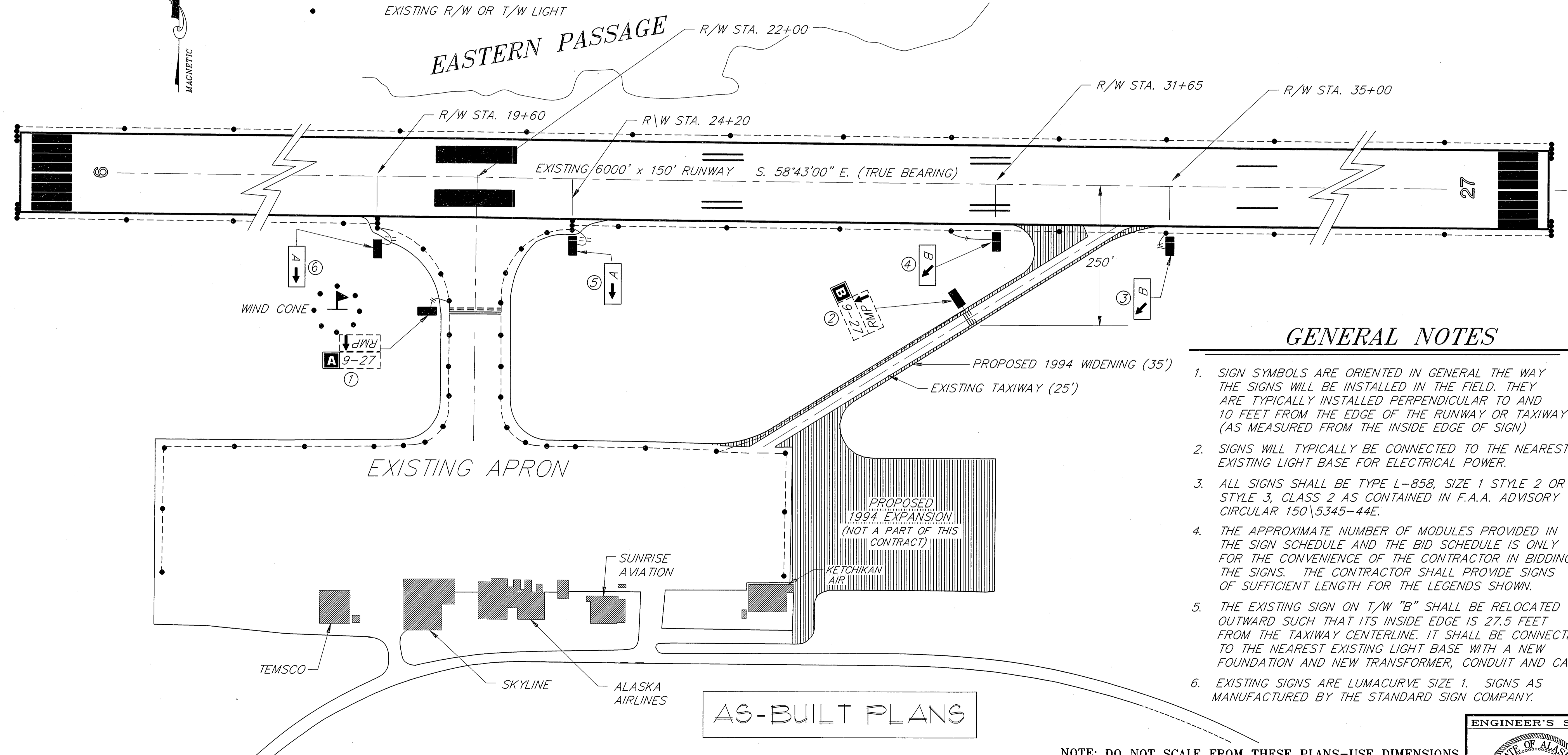
**LEGEND**

- ⑤ SIGN NUMBER
- AIRPORT SIGN
- A → NEW AIRPORT DIRECTION SIGN LEGEND (LETTERING AS INDICATED)
- 9-27 EXISTING AIRPORT SIGN LEGEND
- A NEW AIRPORT LOCATION SIGN (LETTERING AS INDICATED)
- EXISTING PVC CONDUIT WITH CABLE
- || NEW 2" PVC CONDUIT WITH 2 #8, 5KV CABLE AND 1 #6 BARE COPPER GROUND WIRE
- EXISTING R/W OR T/W LIGHT



**WRANGELL SIGN SUMMARY**

| SIGN NUMBER | STATUS   | FACE NUMBER | TYPE   | PURPOSE                    | APPROX. NO MODULES | LEGEND | LEGEND COLOR | BACKGROUND COLOR | PAY ITEM       | NOTES  |
|-------------|----------|-------------|--------|----------------------------|--------------------|--------|--------------|------------------|----------------|--|
| 1           | EXISTING | 1           | L-858R | MANDATORY INSTRUCTION SIGN | 2                  | 9-27   | WHITE        | RED              | 1000r          | EXISTING. NO WORK NEEDED. ADD TO EXISTING. EXISTING SIGN FACE TO REMAIN. |
|             | NEW      | 1           | L-858L | TAXIWAY LOCATION SIGN      | 1                  | A      | YELLOW       | BLACK            |                |  |
|             | EXISTING | 2           | L-858Y | RUNWAY EXIT SIGN           | 2                  | RMP ↑  | BLACK        | YELLOW           |                |  |
| 2           | EXISTING | 1           | L-858R | MANDATORY INSTRUCTION SIGN | 2                  | 9-27   | WHITE        | RED              | 1000u<br>1000r | RELOCATE. SEE NOTE 5. ADD TO EXISTING. EXISTING SIGN FACE TO REMAIN.     |
|             | NEW      | 1           | L-858L | TAXIWAY LOCATION SIGN      | 1                  | B      | YELLOW       | BLACK            |                |  |
|             | EXISTING | 2           | L-858Y | RUNWAY EXIT SIGN           | 2                  | RMP ↑  | BLACK        | YELLOW           |                |  |
| 3           | NEW      | 1           | L-858Y | RUNWAY EXIT SIGN           | 2                  | B      | BLACK        | YELLOW           | 1000s          | NEW SIGN. SEE NOTES 1-3.   |
|             |          | 2           |        | BLANK                      |                    |        |              |                  |                |  |
| 4           | NEW      | 1           | L-858Y | RUNWAY EXIT SIGN           | 2                  | B      | BLACK        | YELLOW           | 1000s          | NEW SIGN. SEE NOTES 1-3.   |
|             |          | 2           |        | BLANK                      |                    |        |              |                  |                |  |
| 5           | NEW      | 1           | L-858Y | RUNWAY EXIT SIGN           | 2                  | A      | BLACK        | YELLOW           | 1000s          | NEW SIGN. SEE NOTES 1-3.   |
|             |          | 2           |        | BLANK                      |                    |        |              |                  |                |  |
| 6           | NEW      | 1           | L-858Y | RUNWAY EXIT SIGN           | 2                  | A      | BLACK        | YELLOW           | 1000s          | NEW SIGN. SEE NOTES 1-3.   |
|             |          | 2           |        | BLANK                      |                    |        |              |                  |                |  |



**GENERAL NOTES**

- SIGN SYMBOLS ARE ORIENTED IN GENERAL THE WAY THE SIGNS WILL BE INSTALLED IN THE FIELD. THEY ARE TYPICALLY INSTALLED PERPENDICULAR TO AND 10 FEET FROM THE EDGE OF THE RUNWAY OR TAXIWAY (AS MEASURED FROM THE INSIDE EDGE OF SIGN)
- SIGNS WILL TYPICALLY BE CONNECTED TO THE NEAREST EXISTING LIGHT BASE FOR ELECTRICAL POWER.
- ALL SIGNS SHALL BE TYPE L-858, SIZE 1 STYLE 2 OR STYLE 3, CLASS 2 AS CONTAINED IN F.A.A. ADVISORY CIRCULAR 150\5345-44E.
- THE APPROXIMATE NUMBER OF MODULES PROVIDED IN THE SIGN SCHEDULE AND THE BID SCHEDULE IS ONLY FOR THE CONVENIENCE OF THE CONTRACTOR IN BIDDING THE SIGNS. THE CONTRACTOR SHALL PROVIDE SIGNS OF SUFFICIENT LENGTH FOR THE LEGENDS SHOWN.
- THE EXISTING SIGN ON T/W "B" SHALL BE RELOCATED OUTWARD SUCH THAT ITS INSIDE EDGE IS 27.5 FEET FROM THE TAXIWAY CENTERLINE. IT SHALL BE CONNECTED TO THE NEAREST EXISTING LIGHT BASE WITH A NEW FOUNDATION AND NEW TRANSFORMER, CONDUIT AND CABLE.
- EXISTING SIGNS ARE LUMACURVE SIZE 1. SIGNS AS MANUFACTURED BY THE STANDARD SIGN COMPANY.

**AS-BUILT PLANS**

NOTE: DO NOT SCALE FROM THESE PLANS-USE DIMENSIONS

PATH: P:\REGION\APSIGNS\DR\TERMINAL 1=100

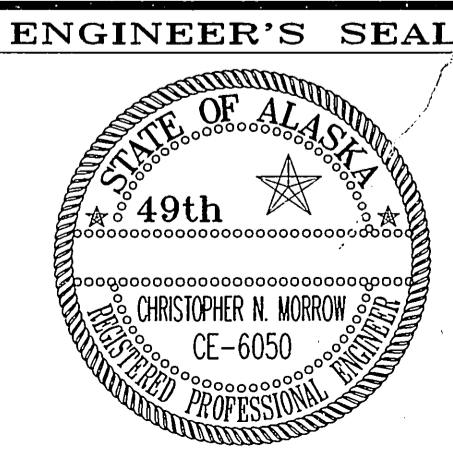
| BY: | DATE: | DESCRIPTION OF CHANGE: |
|-----|-------|------------------------|
|     |       |                        |
|     |       |                        |

RECORD OF REVISIONS

STATE OF ALASKA  
 DEPARTMENT OF TRANSPORTATION  
 AND PUBLIC FACILITIES  
 SOUTHEAST REGION DESIGN & CONSTRUCTION

**WRANGELL AIRPORT SIGN LAYOUT**  
 AIP NO. 3-02-0000-08 AK. NO. 71403  
 SOUTHEAST REGION AIRPORT SIGNAGE

|              |            |              |       |
|--------------|------------|--------------|-------|
| DESIGNED BY: | K. MATTSON | PROJECT NO.  | 71403 |
| DRAWN BY:    | BILL ADAMS | DATE:        |       |
| CHECKED BY:  |            | SHEET 2 OF 4 |       |

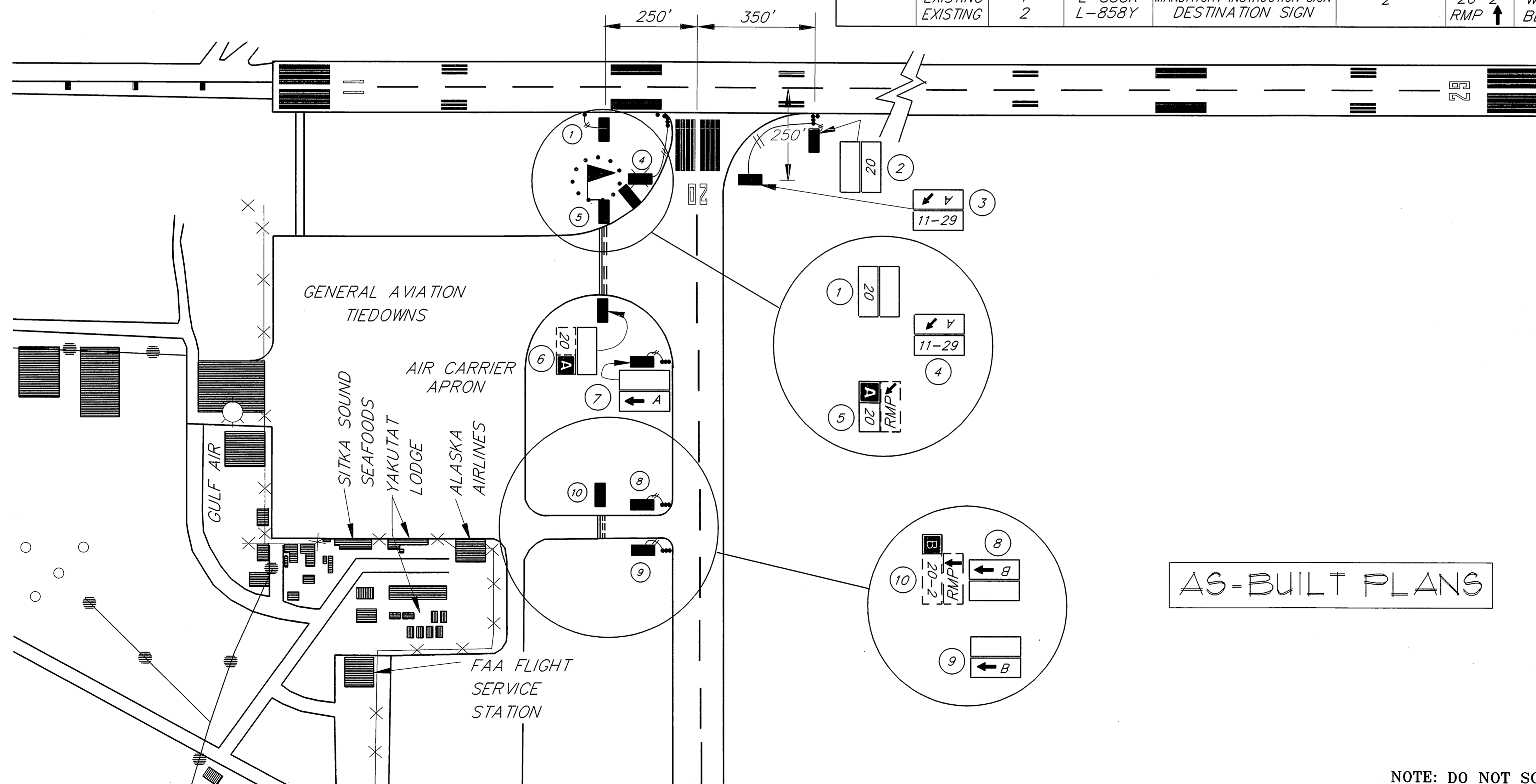


# LEGEND

- 5 SIGN NUMBER
- AIRPORT SIGN
- A → NEW AIRPORT DIRECTION SIGN LEGEND (LETTERING AS INDICATED)
- 9-27 EXISTING AIRPORT SIGN LEGEND
- A NEW AIRPORT LOCATION SIGN (LETTERING AS INDICATED)
- NEW 2" PVC CONDUIT WITH 2 #8, 5KV CABLE AND 1 #6 BARE COPPER GROUND WIRE
- EXISTING R/W OR T/W LIGHT (NOTE: NOT ALL LIGHTS ARE SHOWN; JUST THOSE RELEVANT TO SIGNAGE WORK.)

# YAKUTAT SIGN SUMMARY

| SIGN NUMBER | STATUS   | FACE NUMBER | TYPE   | PURPOSE                    | APPROX. NO MODULES | LEGEND | LEGEND COLOR | BACKGROUND COLOR | PAY ITEM | NOTES                                      |
|-------------|----------|-------------|--------|----------------------------|--------------------|--------|--------------|------------------|----------|--|
| 1           | NEW      | 1           | L-858R | MANDATORY INSTRUCTION SIGN | 1                  | 20     | WHITE        | RED              | 1000s    | NEW SIGN. SEE NOTES 1-3.                   |
|             |          | 2           |        | BLANK                      |                    |        |              |                  |          |  |
| 2           | NEW      | 1           | L-858R | MANDATORY INSTRUCTION SIGN | 1                  | 20     | WHITE        | RED              | 1000s    | NEW SIGN. SEE NOTES 1-3.                   |
|             |          | 2           |        | BLANK                      |                    |        |              |                  |          |  |
| 3           | NEW      | 1           | L-858R | MANDATORY INSTRUCTION SIGN | 2                  | 11-29  | WHITE        | RED              | 1000s    | NEW SIGN. SEE NOTES 1-3.                   |
|             | NEW      | 2           | L-858Y | RUNWAY EXIT SIGN           |                    | A      | BLACK        | YELLOW           |          |  |
| 4           | NEW      | 1           | L-858R | MANDATORY INSTRUCTION SIGN | 2                  | 11-29  | WHITE        | RED              | 1000s    | NEW SIGN. SEE NOTES 1-3.                   |
|             | NEW      | 2           | L-858Y | RUNWAY EXIT SIGN           |                    | A      | BLACK        | YELLOW           |          |  |
| 5           | NEW      | 1           | L-858L | TAXIWAY LOCATION SIGN      | 1                  | A      | YELLOW       | BLACK            | 1000v    | NEW SIGN FACE. ("A" AND "20" WILL BE PAID  |
|             | NEW      | 1           | L-858R | MANDATORY INSTRUCTION SIGN | 1                  | 20     | WHITE        | RED              | 1000v    | NEW SIGN FACE. FOR ONLY ONCE UNDER 1000v.) |
|             | EXISTING | 1           | L-858R | MANDATORY INSTRUCTION SIGN | 2                  | 11-29  | WHITE        | RED              |          | REMOVE SIGN FACE.                          |
|             | EXISTING | 2           | L-858Y | RUNWAY EXIT SIGN           |                    | RMP    | BLACK        | YELLOW           |          | EXISTING FACE TO REMAIN.                   |
| 6           | NEW      | 1           | L-858R | MANDATORY INSTRUCTION SIGN | 1                  | 20     | WHITE        | RED              | 1000v    | NEW SIGN FACE. ("A" AND "20" WILL BE PAID  |
|             | NEW      | 1           | L-858L | TAXIWAY LOCATION SIGN      | 1                  | A      | YELLOW       | BLACK            | 1000v    | NEW SIGN FACE. FOR ONLY ONCE UNDER 1000v.) |
|             | EXISTING | 1           | L-858R | MANDATORY INSTRUCTION SIGN | 2                  | 20     | WHITE        | RED              |          | REMOVE SIGN FACE.                          |
|             |          | 2           | L-858Y | DESTINATION SIGN           |                    | BLANK  | BLACK        | YELLOW           |          | EXISTING FACE TO REMAIN.                   |
| 7           | NEW      | 1           | L-858Y | RUNWAY EXIT SIGN           | 2                  | A      | BLACK        | YELLOW           | 1000s    | NEW SIGN. SEE NOTES 1-3.                   |
|             |          | 2           |        | BLANK                      |                    | BLANK  |              |                  |          |  |
| 8           | NEW      | 1           | L-858Y | RUNWAY EXIT SIGN           | 2                  | B      | BLACK        | YELLOW           | 1000s    | NEW SIGN. SEE NOTES 1-3.                   |
|             |          | 2           |        | BLANK                      |                    | BLANK  |              |                  |          |  |
| 9           | NEW      | 1           | L-858Y | RUNWAY EXIT SIGN           | 2                  | B      | BLACK        | YELLOW           | 1000s    | NEW SIGN. SEE NOTES 1-3.                   |
|             |          | 2           |        | BLANK                      |                    | BLANK  |              |                  |          |  |
| 10          | NEW      | 1           | L-858L | TAXIWAY LOCATION SIGN      | 1                  | B      | YELLOW       | BLACK            | 1000r    | NEW SIGN. ADD TO EXISTING.                 |
|             | EXISTING | 1           | L-858R | MANDATORY INSTRUCTION SIGN | 2                  | 20-2   | WHITE        | RED              |          | EXISTING SIGN TO REMAIN.                   |
|             | EXISTING | 2           | L-858Y | DESTINATION SIGN           |                    | RMP    | BLACK        | YELLOW           |          | EXISTING FACE TO REMAIN.                   |



## GENERAL NOTES

- SIGN SYMBOLS ARE ORIENTED IN GENERAL THE WAY THE SIGNS WILL BE INSTALLED IN THE FIELD. (THEY ARE TYPICALLY INSTALLED PERPENDICULAR TO AND 10 FEET FROM THE EDGE OF THE RUNWAY OR TAXIWAY.)
- SIGNS WILL TYPICALLY BE CONNECTED TO THE NEAREST EXISTING LIGHT BASE FOR ELECTRICAL POWER.
- ALL SIGNS SHALL BE TYPE L-858, SIZE 1 STYLE 2 OR STYLE 3, CLASS 2 AS CONTAINED IN F.A.A. ADVISORY CIRCULAR 150\5345-44E.
- THE APPROXIMATE NUMBER OF MODULES PROVIDED IN THE SIGN SCHEDULE AND THE BID SCHEDULE IS ONLY FOR THE CONVENIENCE OF THE CONTRACTOR IN BIDDING THE SIGNS. THE CONTRACTOR SHALL PROVIDE SIGNS OF SUFFICIENT LENGTH FOR THE LEGENDS SHOWN.
- EXISTING SIGNS ARE LUMACURVE SIZE 1. SIGNS ARE MANUFACTURED BY STANDARD SIGN COMPANY.

AS-BUILT PLANS

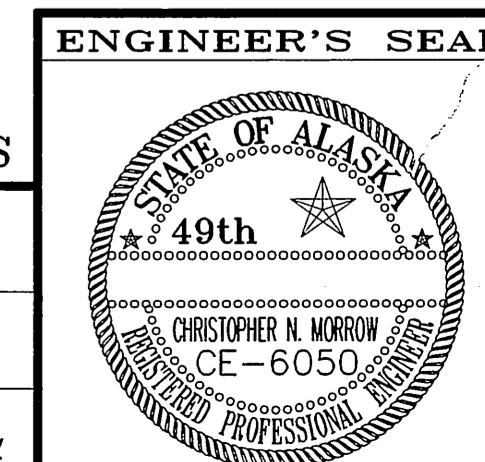
NOTE: DO NOT SCALE FROM THESE PLANS-USE DIMENSIONS

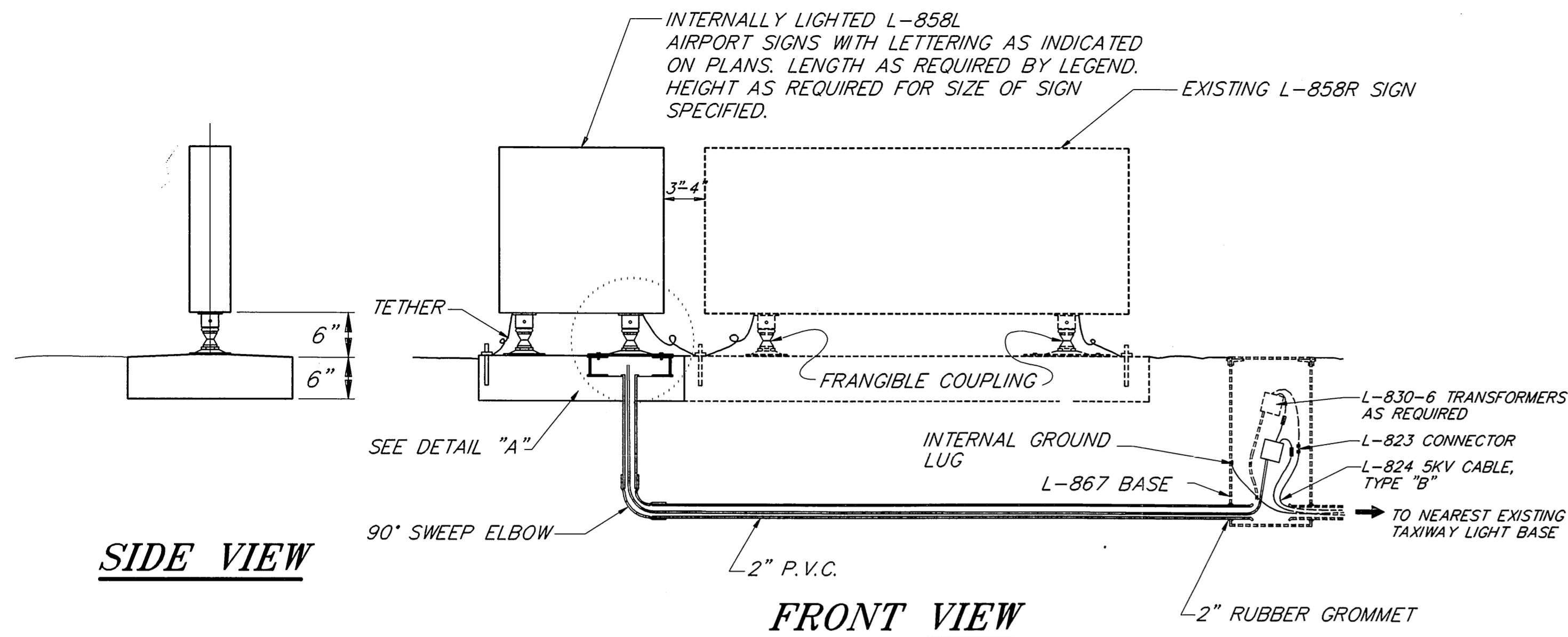
|   |       |                        |
|---|-------|------------------------|
| PATH: P:\REGION\APSIGNS\DR\YAKSIGN 1=15 |       |                        |
| BY:                                     | DATE: | DESCRIPTION OF CHANGE: |
|   |       |                        |
| RECORD OF REVISIONS                     |       |                        |

STATE OF ALASKA  
DEPARTMENT OF TRANSPORTATION  
AND PUBLIC FACILITIES  
SOUTHEAST REGION DESIGN & CONSTRUCTION

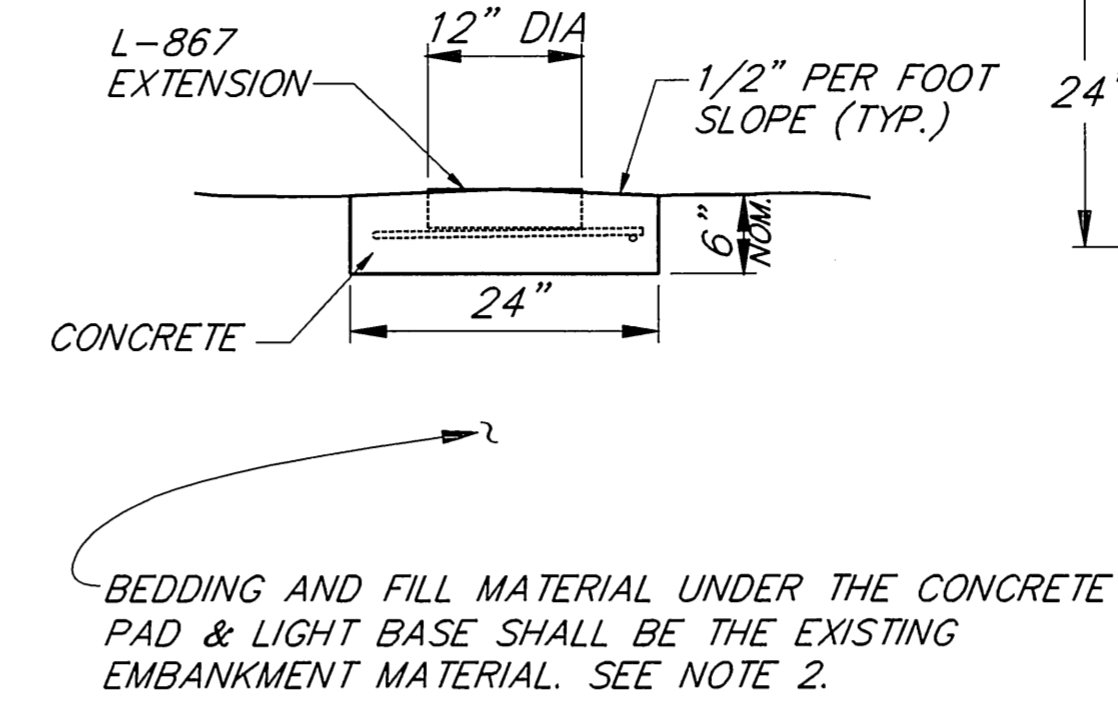
**YAKUTAT AIRPORT SIGN LAYOUT**  
AIP NO.3-02-0000-08 AK. NO. 71403  
SOUTHEAST REGION AIRPORT SIGNAGE

|                            |                      |
|----------------------------|----------------------|
| DESIGNED BY:<br>K. MATTSON | PROJECT NO.<br>71403 |
| DRAWN BY:<br>B. ADAMS      | DATE:                |
| CHECKED BY:                | SHEET 3 OF 4         |

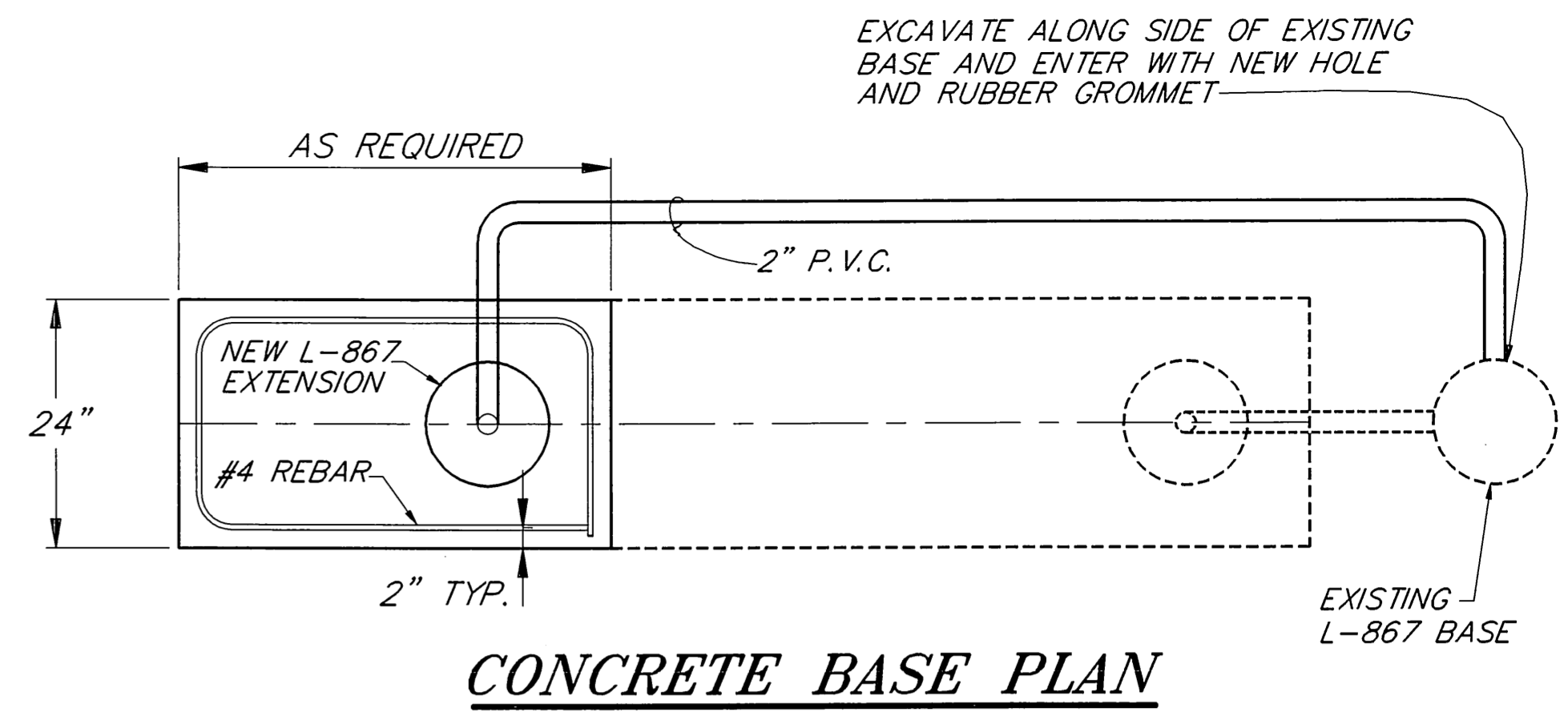




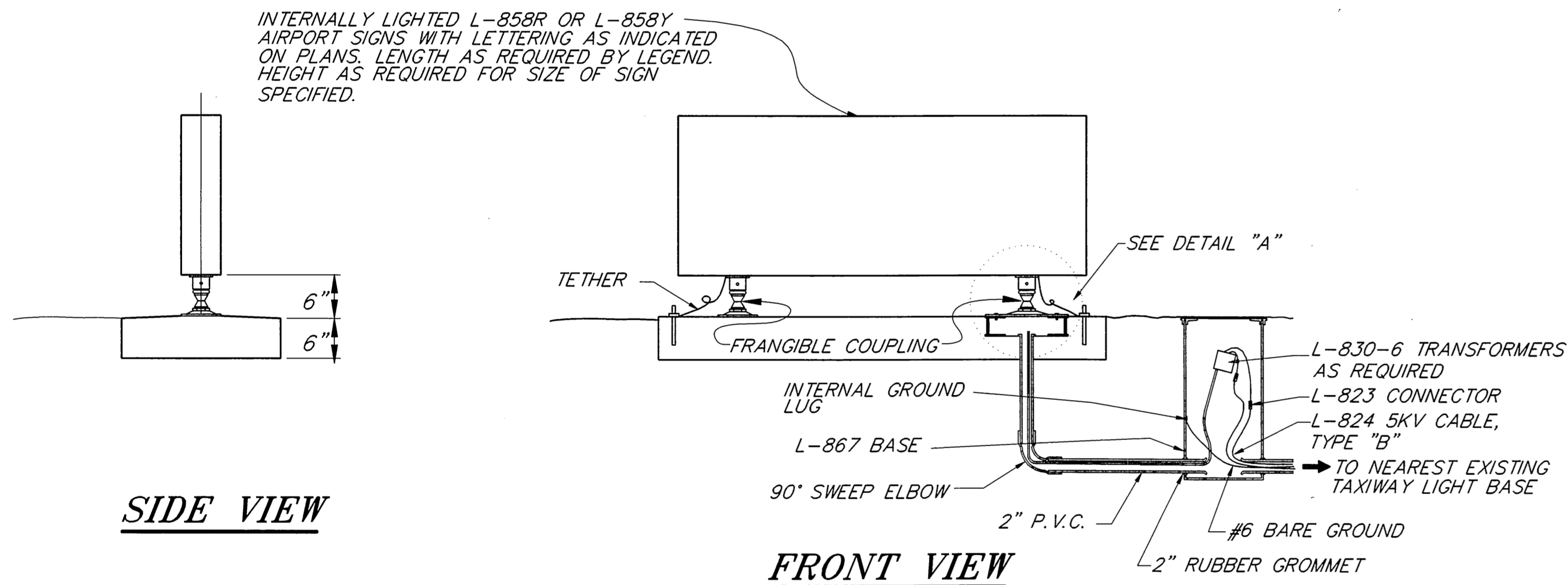
**L-858L SIGN DETAILS**



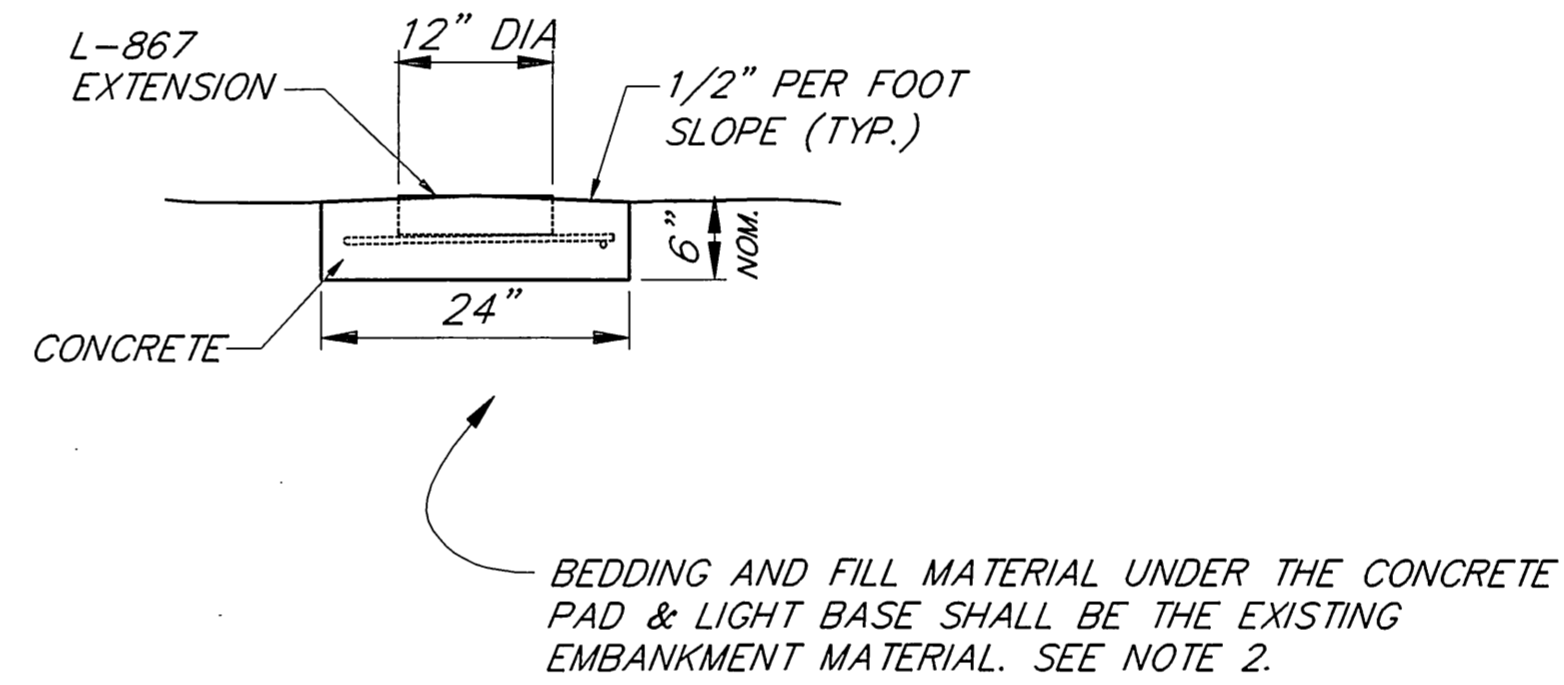
**CONCRETE BASE SIDE VIEW**



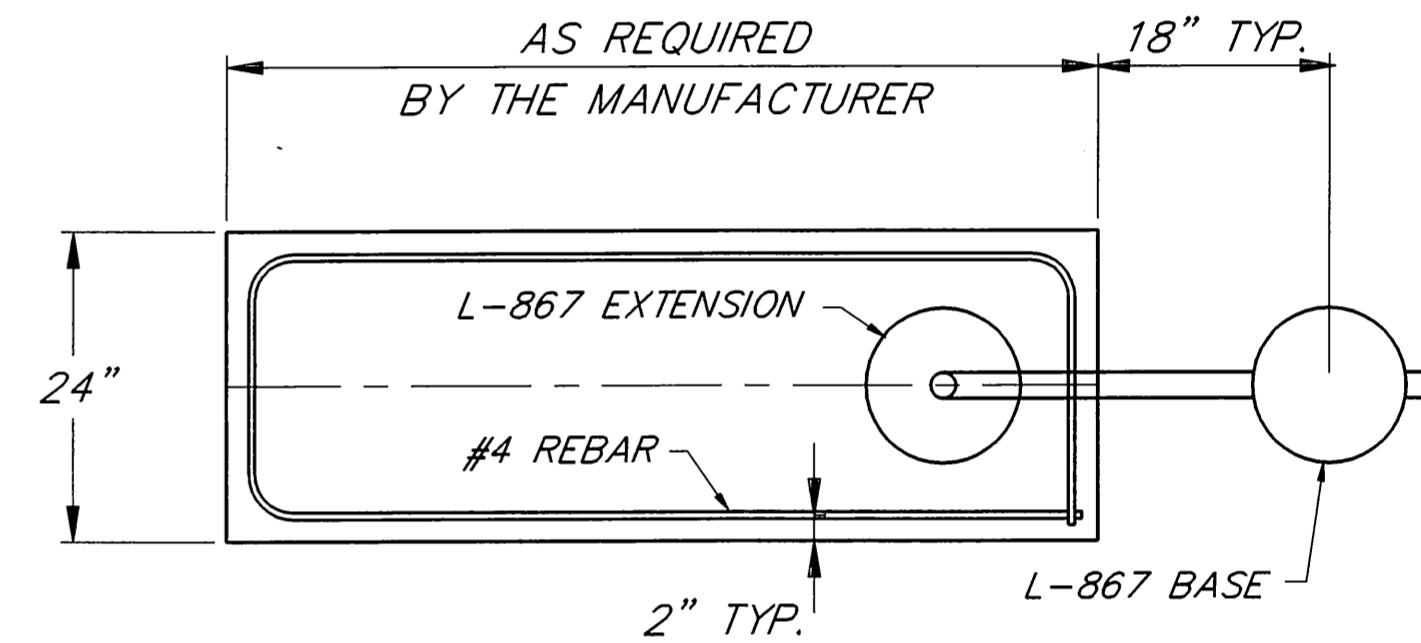
**CONCRETE BASE PLAN**



**L-858Y SIGN DETAILS**



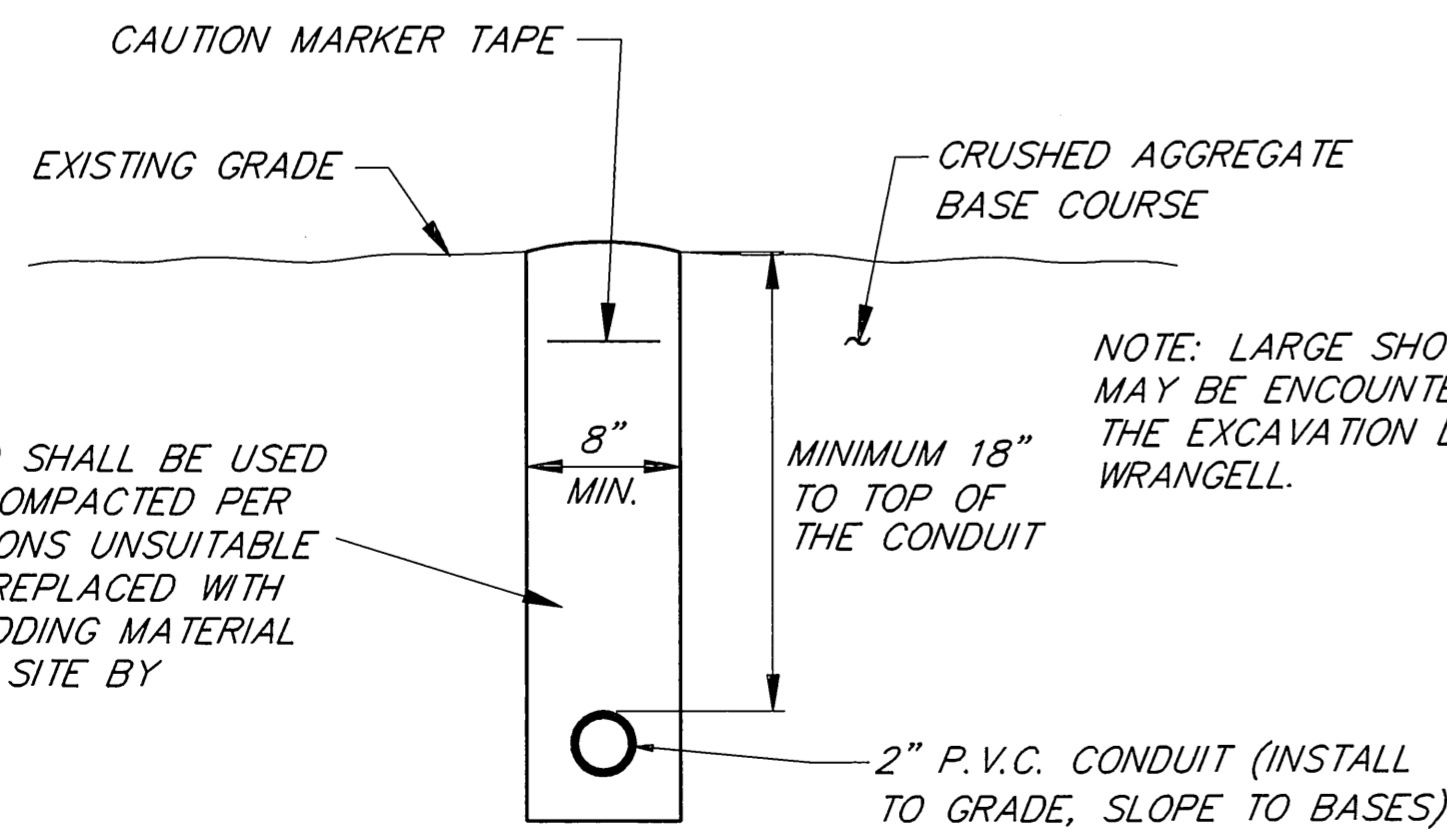
**CONCRETE BASE SIDE VIEW**



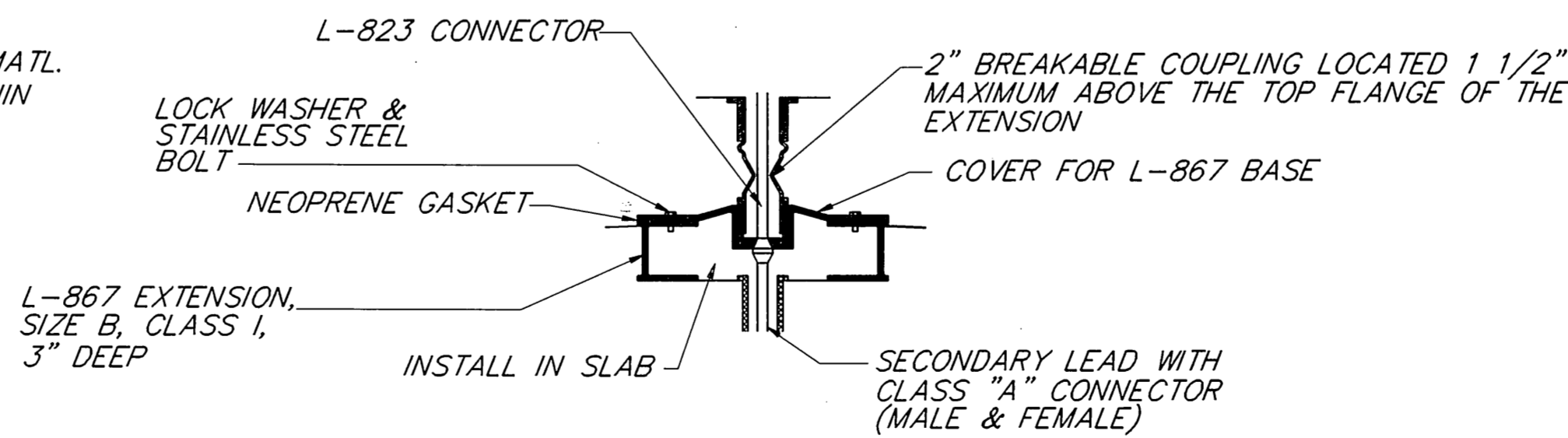
**CONCRETE BASE PLAN**

**NOTES**

1. TO LOCATE TYPE L-858 SIGNS FIRST LOCATE POINT OF TANGENT THEN PLACE SIGNS 10' FROM THE OUTSIDE EDGE OF THE PAINT STRIPE OR EDGE OF THE EXISTING PAVEMENT.
2. MINOR GRADING OR FILL SHALL BE REQUIRED AT ALL SIGN LOCATIONS. THE GRADING AND EARTHWORK SHALL BE INCIDENTAL TO THE CONTRACT AND NO SEPARATE PAYMENT SHALL BE MADE.
3. ATTACH SIGNS TO CONCRETE BASE IN ACCORDANCE WITH MANUFACTURE'S INSTRUCTIONS.
4. CONCRETE FOR CONCRETE BASES SHALL BE CONSTRUCTED OF 5 1/2 SACKS OF CEMENT PER CU. YD. OF CONCRETE. SACK-CRETE MAY BE USED.



**CONDUIT TRENCH DETAIL**



**DETAIL 'A'**

AS-BUILT PLANS

|                     |                                   |                        |  |
|---------------------|-----------------------------------|------------------------|--|
| PATH:               | P: \REGION\APSIGNS\DR\SIGDET2 1=1 |                        |  |
| BY:                 | DATE:                             | DESCRIPTION OF CHANGE: |  |
|                     |                                   |                        |  |
| RECORD OF REVISIONS |                                   |                        |  |

STATE OF ALASKA  
DEPARTMENT OF TRANSPORTATION  
AND PUBLIC FACILITIES  
SOUTHEAST REGION DESIGN & CONSTRUCTION

YAKUTAT AIRPORT

**AIRPORT SIGN DETAILS**  
SOUTHEAST REGIONAL AIRPORT SIGNAGE  
A.I.P. NO. 3-02-0000-08 AK. NO. 71403

NOTE: DO NOT SCALE FROM THESE PLANS-USE DIMENSIONS

WRANGELL AIRPORT

DESIGNED BY: C. DAHLE  
DRAWN BY: C. ANDERSON  
CHECKED BY: C. MORROW

PROJECT NO. 71403  
DATE:  
SHEET 4 OF 4

