

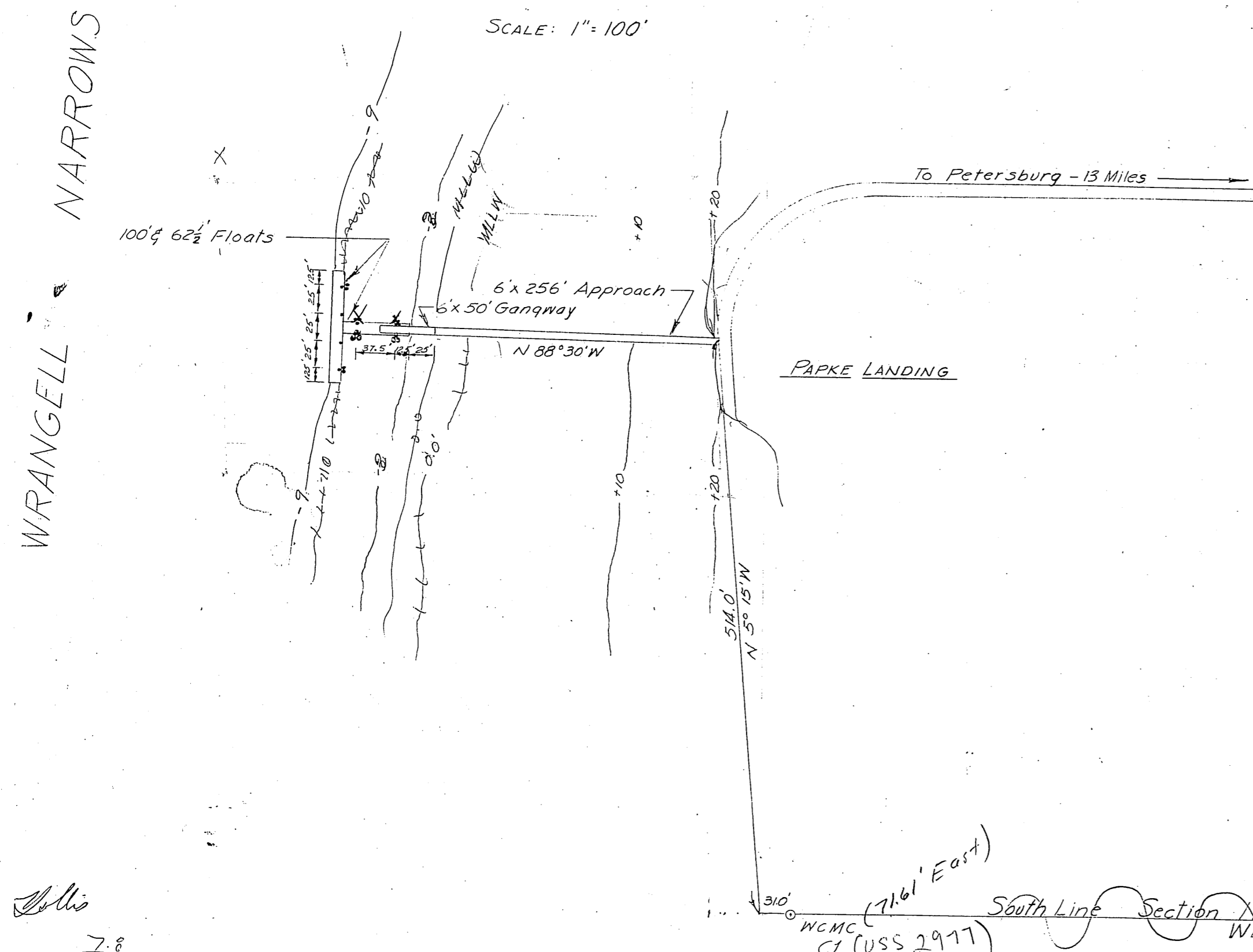
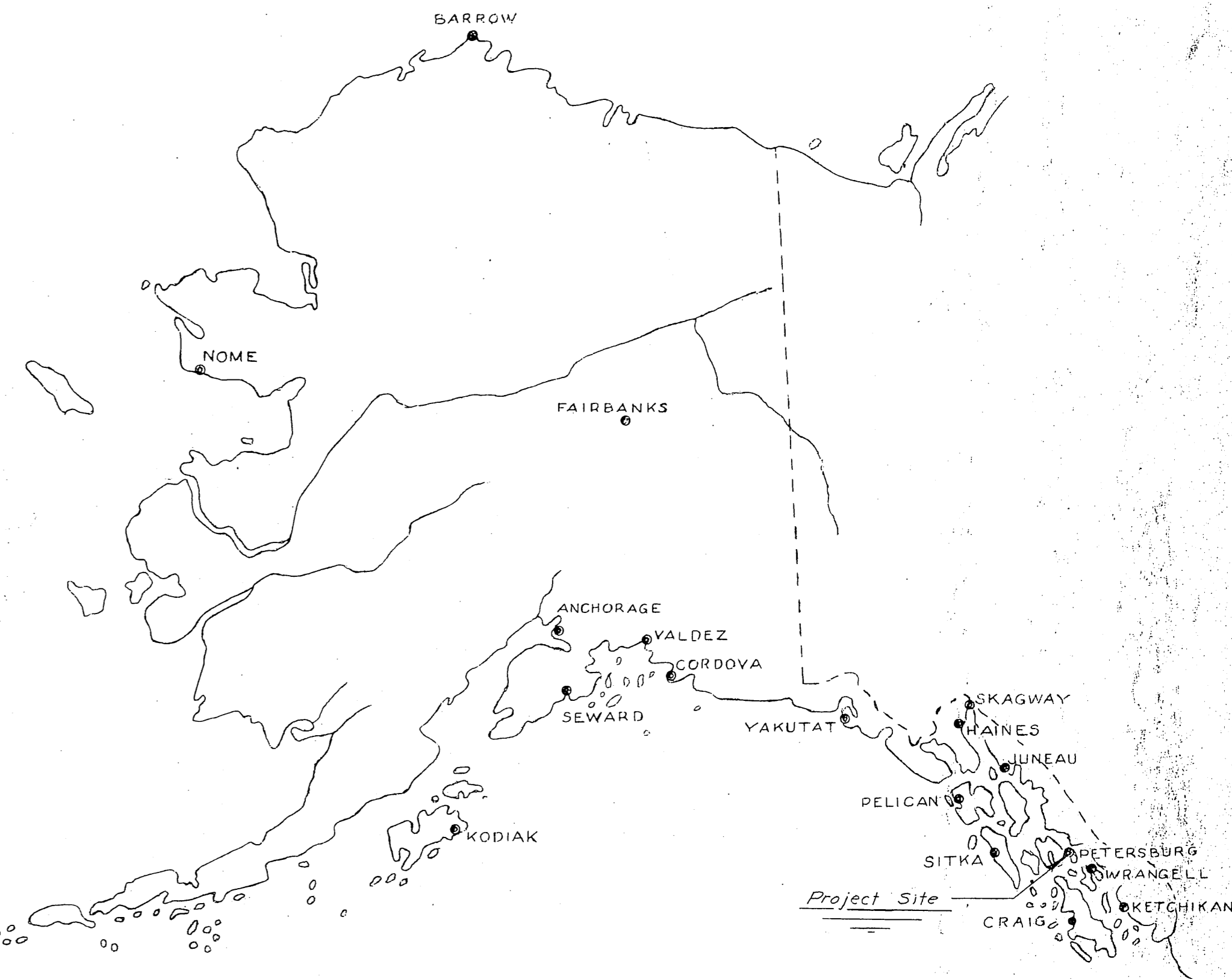
STATE OF ALASKA

DEPARTMENT OF PUBLIC WORKS

DIVISION OF WATER & HARBORS

PETERSBURG APPROACH & FLOATS

PROJECT NO. W6205



NOTES:

Existing float system (not shown) to be removed and proposed facilities installed in same location. Information obtained from water jet probing along the existing approach & float alignment indicates maximum penetration will be 6 feet. Average probe depth throughout was approx. 4.5 feet. Piling will be driven to refusal. Single pile cutoff elev. ~~730.0~~ 730.0 M.L.L.W. Dolphin piling cutoff elev. ~~730.0~~ 730.0

WORK SUMMARY

Major units of this project ~~will~~ include removal & disposal of existing float system, construction of a 6' x 256' Approach, a 6' x 50' Gangway and 1625 sq. ft. of floats, and the furnishing & driving of ~~650~~ 650 of creos. Piling.

INDEX TO SHEETS

TITLE SHEET	1
PROFILE & APPROACH DETAILS	2
TYPICAL FLOATS	3
TYPICAL GANGWAY	4

1279 *Collis*

13.1	7.8
7.8	215.6
20.9	18

7.8

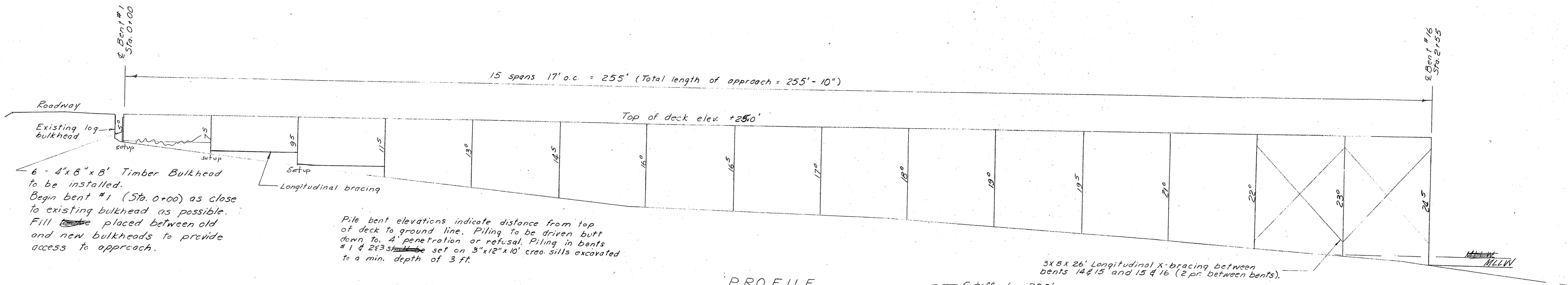
8.1

15.9

U.S.S. 2977

As-Built

DATE 11-2-1961	APPROVED <i>Deputy</i> Deputy COMMISSIONER
----------------	---

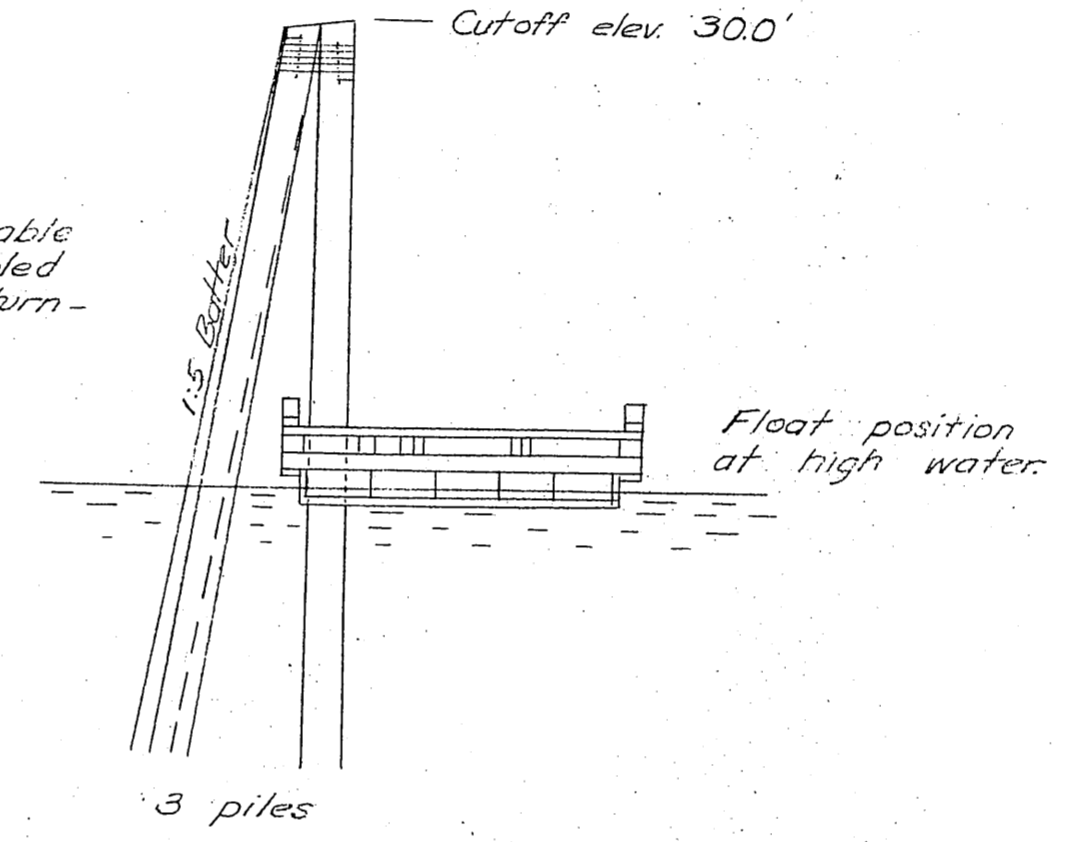


6 - 4'x6'x8' Timber Bulkhead to be installed. Begin bent #1 (Sta. 0+00) as close to existing bulkhead as possible. Fill ~~the~~ placed between old and new bulkheads to provide access to approach.

Pile bent elevations indicate distance from top of deck to ground line. Piling to be driven butt down to 4' penetration or refusal. Piling in bents #1 & 2 ~~is to be~~ set on 3"x12"x10' creos. sills excavated to a min. depth of 3 ft.

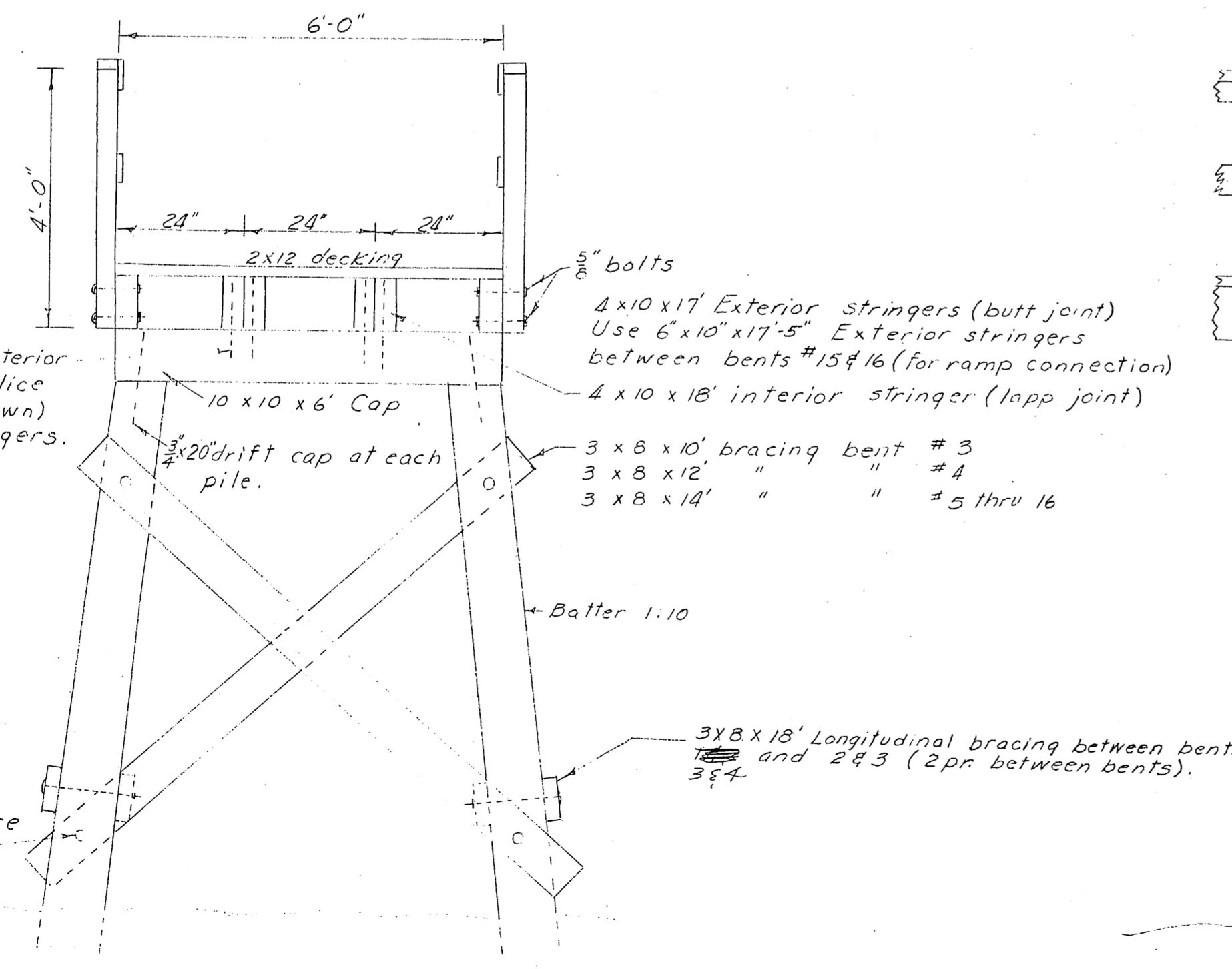
3x8x26' Longitudinal X-bracing between bents 14 & 15 and 15 & 16 (2 pr. between bents).

PROFILE
1" = 10'

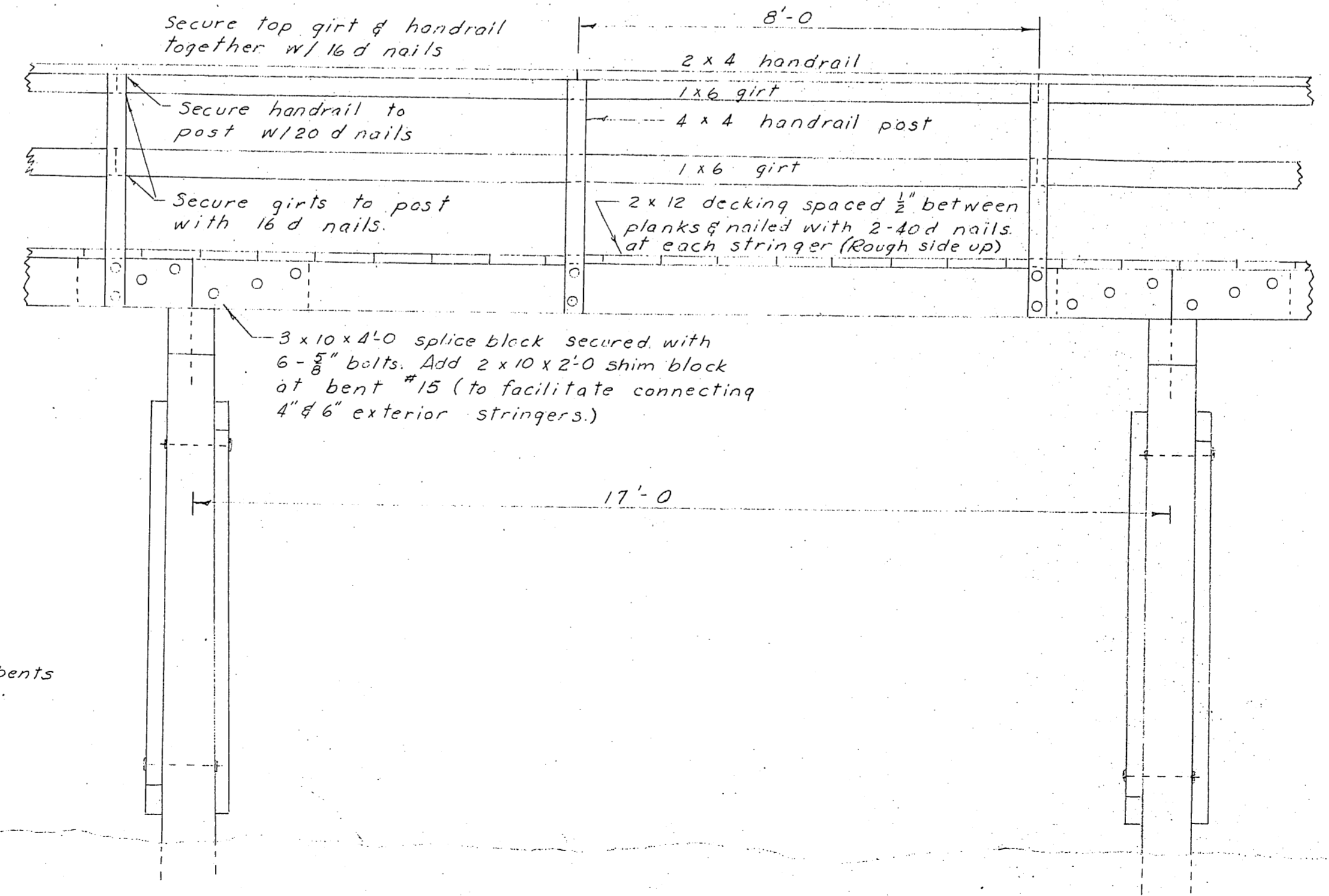


Typical Float Dolphin
Scale 3/16" = 1'-0"

		MATERIALS			
		ITEM	GRADE	DRESSING	CREOTREAT.
DOUGLAS FIR	PILING		Class A		12" Ret.
	BRACING		Const.	Rough	" "
	CAPS		"	"	10" "
	STRINGERS		"	S4S	" "
	SPLICE BLOCKS		"	"	" "
SITKA SPRUCE	DECKING		"	S1S	None
	HANDRAILS		"	S4S	"
	HANDRAIL POSTS		"	"	"
	GIRTS		"	"	"



APPROACH SECTION
1/2" = 1'-0"

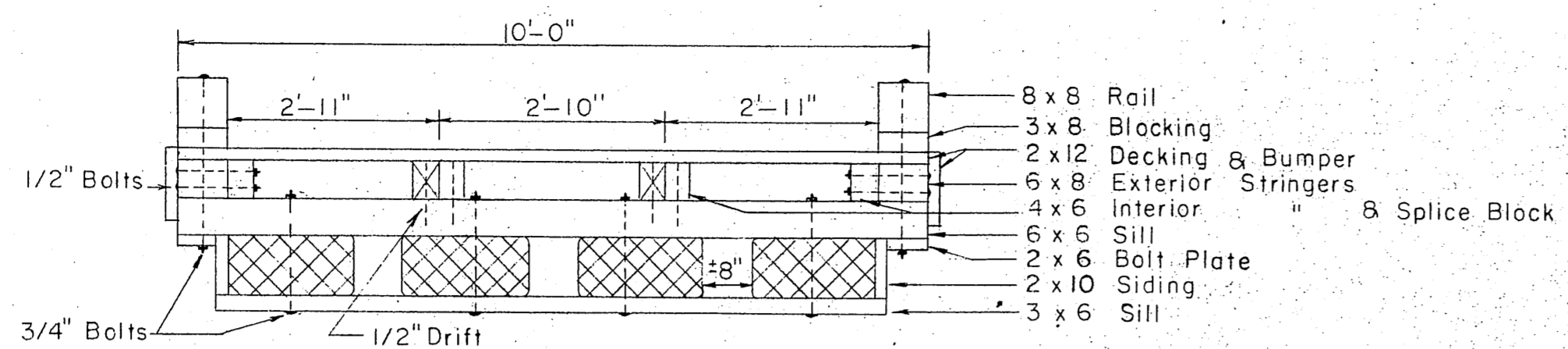


APPROACH ELEVATION
1/2" = 1'-0"

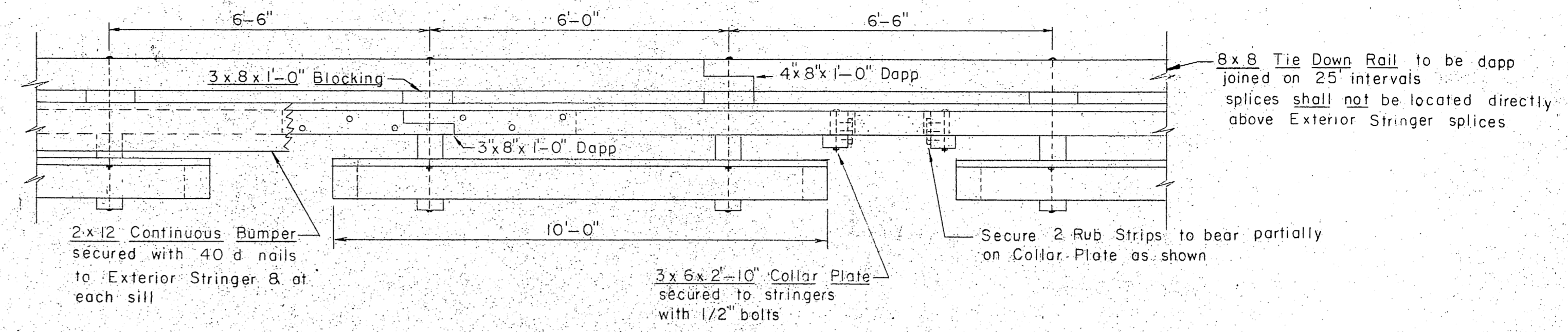
NOTES

All hardware to be galvanized with malleable iron washers between nut and wood surfaces. All bolts to be Economy Head type. Bolt holes to be drilled true size. Drift holes to be drilled 1/8" undersize. Drill holes to be treated with hot creosote oil. All native wood bearing surfaces and joints to be treated with asphaltic roofing compound. All creosote treated material shall be cut to size prior to treatment.

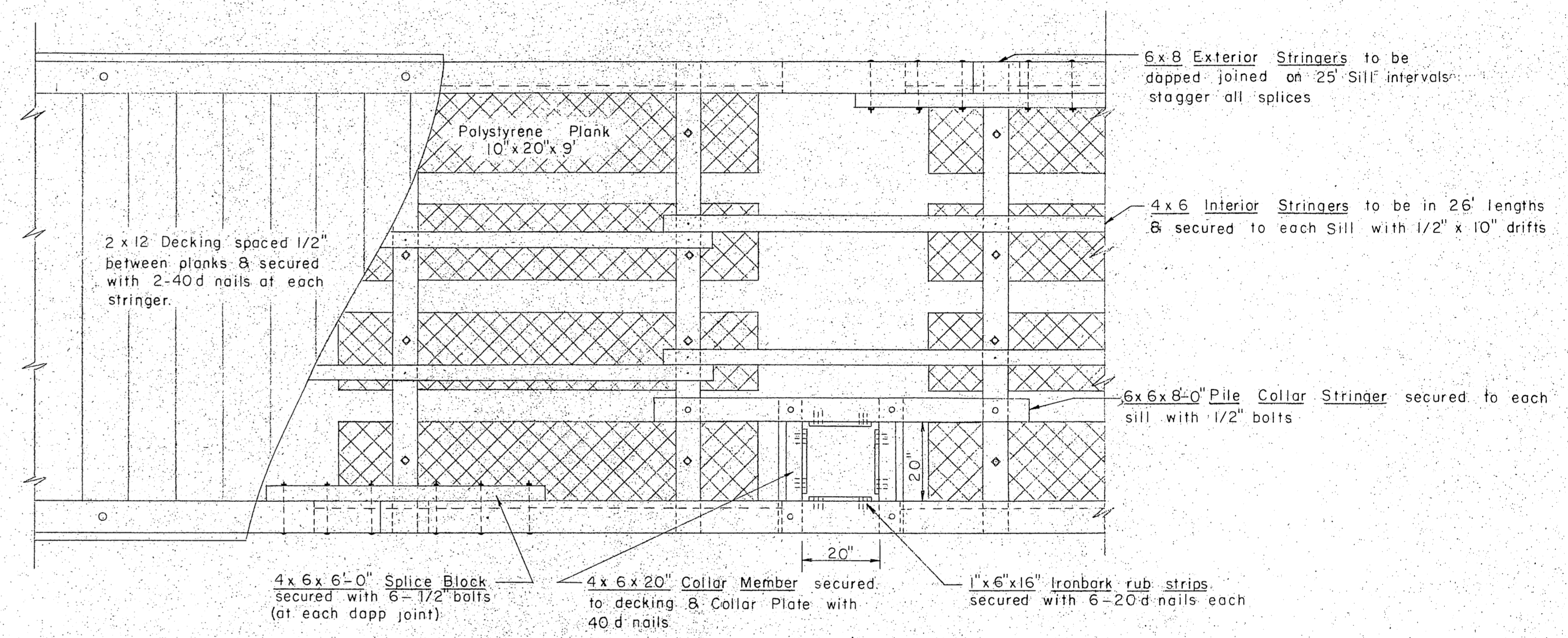
NO.	DATE	REVISION	BY
STATE OF ALASKA DEPARTMENT OF PUBLIC WORKS DIVISION OF WATER AND HARBORS			
PETERSBURG APPROACH & FLOAT Papke Landing Typical Section & Profile			
SCALE	As shown	APPROVED	<i>[Signature]</i>
DATE	10-12-1961	COMMISSIONER	
PROJ. NO.	M6205	DRAWN BY	<i>[Signature]</i>
SURVEYED BY	<i>[Signature]</i>	CHECKED BY	<i>[Signature]</i>



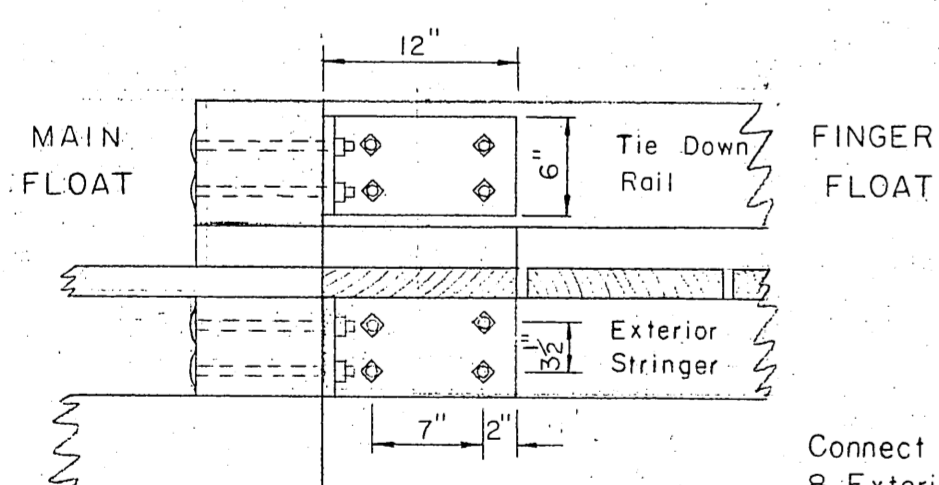
10' FLOAT SECTION
1/2" = 1'-0"



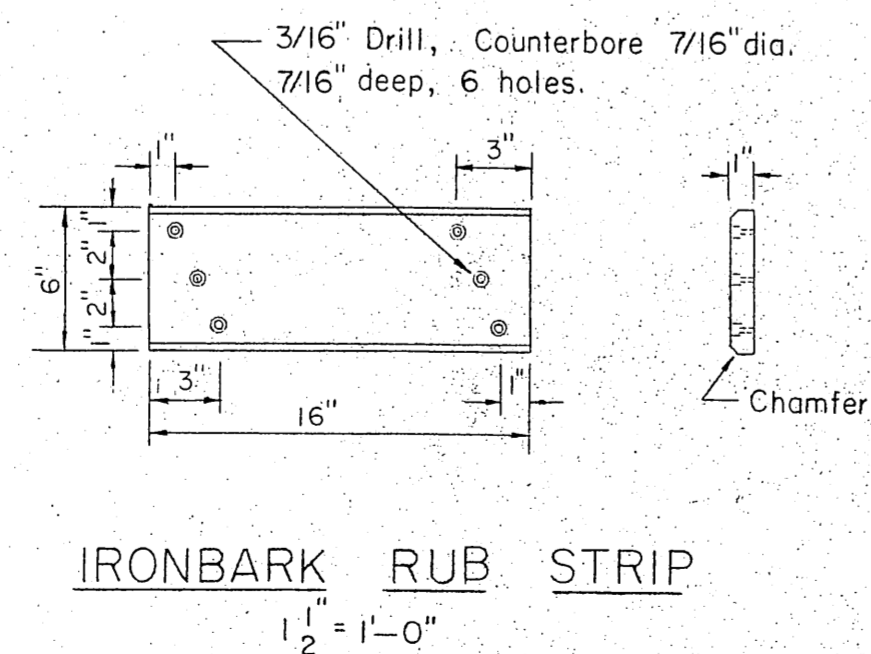
ELEVATION
1/2" = 1'-0"



10' PLAN VIEW 10' FLOAT
1/2" = 1'-0"



CONNECTION DETAIL
1" = 1'-0"



IRONBARK RUB STRIP
1/2" = 1'-0"

Connect Tie Down Rails & Exterior Stringers with 1/2" x 6" x 24" Angle Plates as shown. 4 Plates required per connection.

ITEM	GRADE	DRESSING	CREOSOTE TREAT.
3x6 Sill	Construction	Rough	12 Lbs. Ret.
2x10 Siding	"	"	"
2x6 Bolt Plate	"	"	"
6x6 Sill	"	"	"
4x6 Interior Stringers	"	S2 E	"
6x8 Exterior	"	S4 S	"
4x6 Splice Block	"	S2 E	"
2x10 End Plate	"	Rough	"
2x12 Bumper	Construction	S1 S	None
2x12 Decking	"	"	"
3x8 Blocking	"	S4 S	"
8x8 Rail	"	"	"

DOUGLAS FIR OR WESTERN HEMLOCK

SITKA SPRUCE

All piling will be Class A, creosoted to 12" retention.

NOTES

All hardware to be hot dip galvanized. A malleable iron washer shall be placed between all nut & wood surfaces. All bolts to be of the mushroom head type. Bolt holes to be drilled true size. Drift holes to be drilled 1/16" undersize. All drill holes shall be treated with hot creosote oil. All pressure treated creosote material shall be cut to size prior to treatment. Tie Down Rail & Blocking contact surfaces shall be treated with asphaltic roofing compound. An additional Polystyrene Plank shall be incorporated into each of the nearest two float sections wherever gangway rests on float. A 2x10 End Plate shall be securely nailed to float Siding members on all exposed float ends. Tie Down Rail shall be extended across all float ends.

NO	DATE	REVISION	BY
STATE OF ALASKA DEPARTMENT OF PUBLIC WORKS DIVISION OF WATER AND HARBORS			
TYPICAL FLOATS			
SCALE As Shown		APPROVED <i>R.A. Downing</i> COMMISSIONER	
DATE		SURVEYED BY	
PROJ. NO.		DRAWN BY DS	
		CHECKED BY DW	