

STATE	PROJECT	SHEET NO.	TOTAL SHEETS
ALASKA	SOS-3 (17)	1	3

TITLE SHEET

INDEX OF SHEETS	
1.	TITLE SHEET
2.	TYPICAL SECTION, QUANTITIES
3.	PLAN AND PROFILE

The following Standard Drawings apply to this project:

A-1, C-00.04, C-10.03, C-11.03, D-04.00, I-40.21, I-80.00

WORK STARTED: 4-13-81
WORK COMPLETED: 5-1-81

CONTRACTOR: ERICKSON CONSTRUCTION CO.
BOX 1187
PETERSBURG, AK. 99833

PROJECT ENGINEER: WILLIAM C. BOYD

STATE OF ALASKA
DEPARTMENT OF TRANSPORTATION
&
PUBLIC FACILITIES

APPROVED
Walter K. Wilson Date 2/4/81
SOUTHEASTERN REGION
DESIGN/CONSTRUCTION ENGINEER

STATE OF ALASKA
DEPARTMENT OF TRANSPORTATION
&
PUBLIC FACILITIES
APPROVED
Charles J. Matlock Date 2-11-81
DIRECTOR-HIGHWAY DESIGN & CONSTRUCTION

STATE OF ALASKA
DEPARTMENT OF TRANSPORTATION
&
PUBLIC FACILITIES

PLAN AND PROFILE
PROPOSED HIGHWAY PROJECT

HAUGEN DRIVE
SOS-3(17)
GRADING & DRAINAGE

AS BUILT PLANS

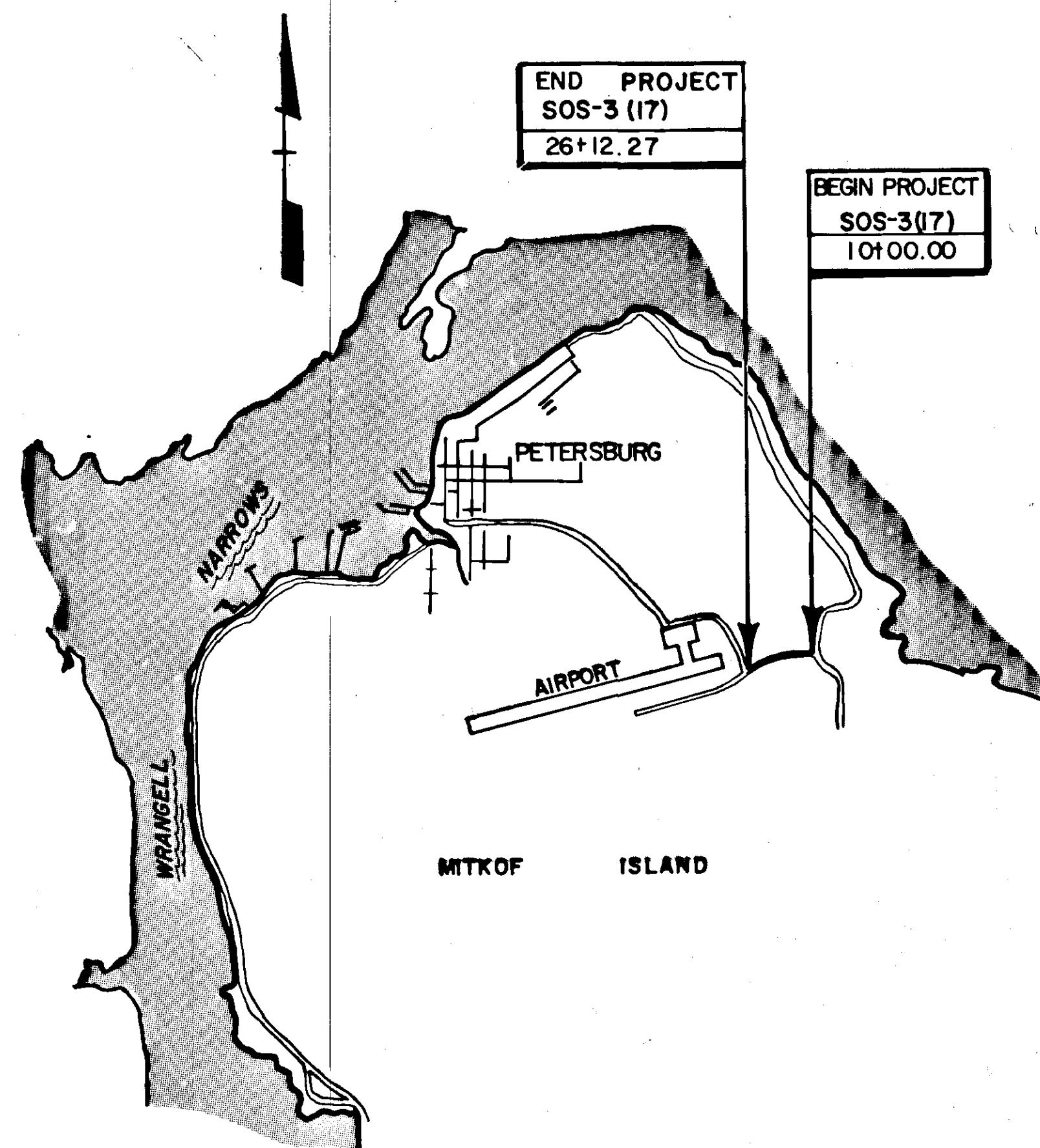


PROJECT SUMMARY

WIDTH OF SURFACING = 28 ft. | 91.0 ft.
LENGTH OF GRADING = 1612 = 0.31 mi.
LENGTH OF PROJECT = 1612 = 0.31 mi.

DESIGN DESIGNATION

ADT 1980 = 255
ADT 2001 = 312
DHV = 11% 35
D = 65-35
T = 2%
T.I. = 5.0
V = 30 M.P.H.



VICINITY MAP

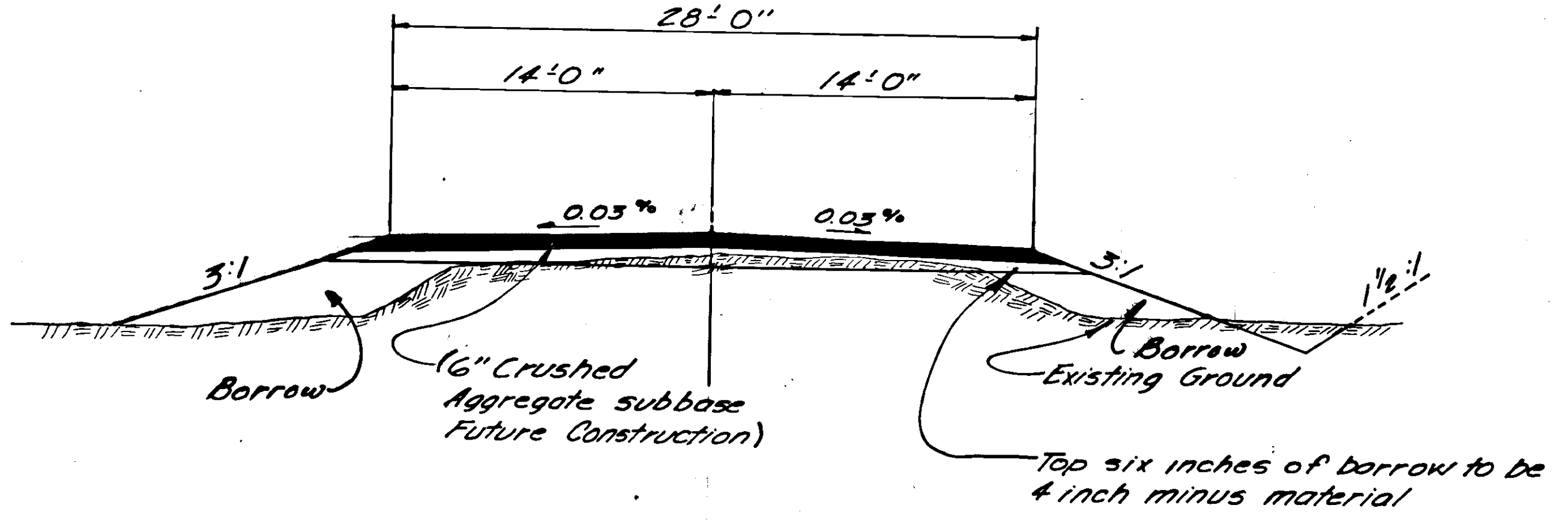
ESTIMATE OF QUANTITIES			
ITEM NO.	ITEM	UNIT	QUANT.
1	Furn. & Maint. Engineering Facilities	L.S.	All Req'd.
109(1)	Petroleum Escalation	E.S.	All Req'd.
110(1)	Mobilization	L.S.	All Req'd.
111(1)	Temporary Erosion & Pollution Control	E.S.	All Req'd.
114(1)	Construction Engineering by the contractor	L.S.	All Req'd.
115(1)	Traffic Maintenance	L.S.	All Req'd.
223(5c)	Borrow	CY.M.	6500
603(22)	12" Pipe Conduit	L.F.	20

7,199.2

32

STATE	PROJECT DESIGNATION	YEAR	SHEET NO.	TOTAL SHEETS
ALASKA	SOS-3 (17)	1980	2	3

TYPICAL SECTION, QUANTITIES



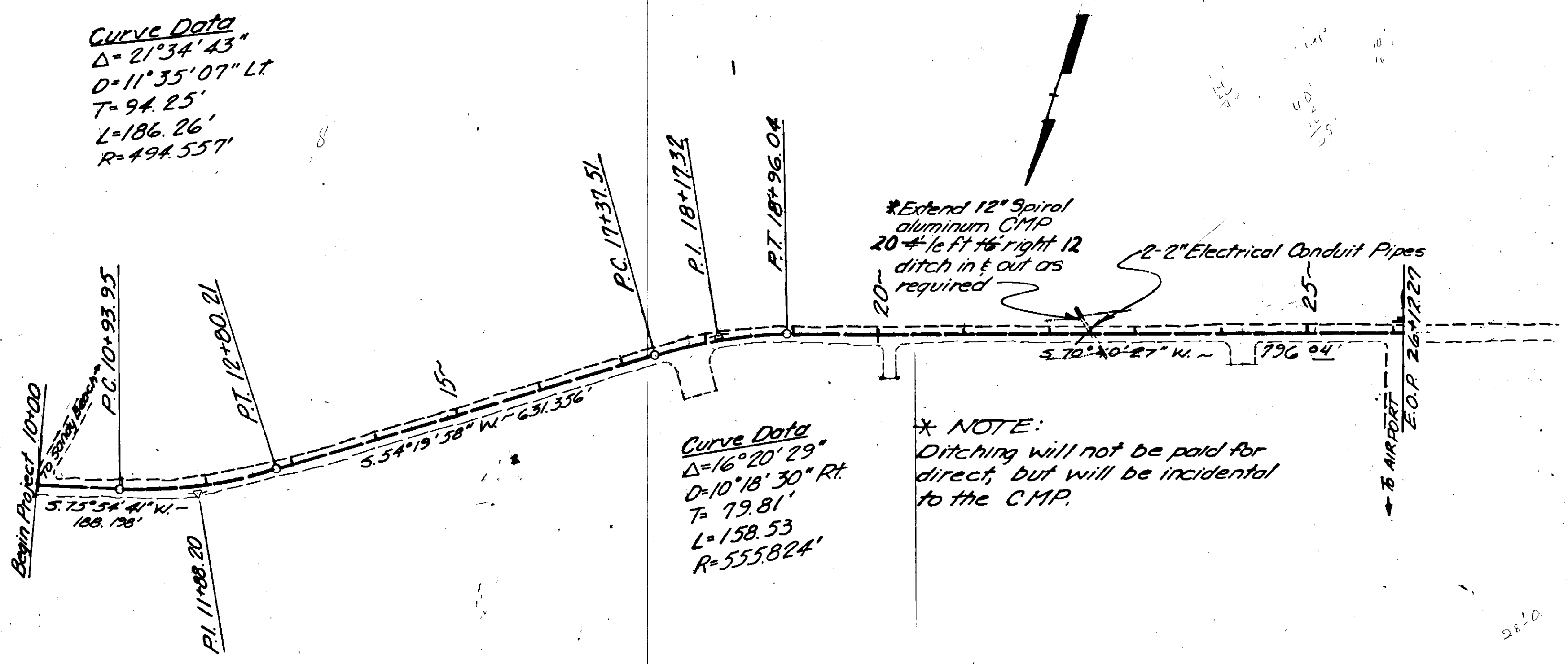
TYPICAL SECTION

GENERAL NOTES

1. Pipe culvert length is approximate only and is subject to field adjustment.
2. Rotate superelevation around inside shoulder on curves using a transition length of 150'. See Standard Drawing I-80.00.

STATE	PROJECT DESIGNATION	YEAR	SHEET NO.	TOTAL SHEETS
ALASKA	SOS-3(17)	1980	3	3

PLAN AND PROFILE



VERTICAL CONTROL
 TBM SB-13 Spike in 16" Hemlock
 59'0" left of Sta 203+6.5, Project
 S-0937 Petersburg Thru Route
 Phase III.

HORIZONTAL CONTROL
 Field Notes showing references
 to P.I. will be provided to the
 Contractor.

