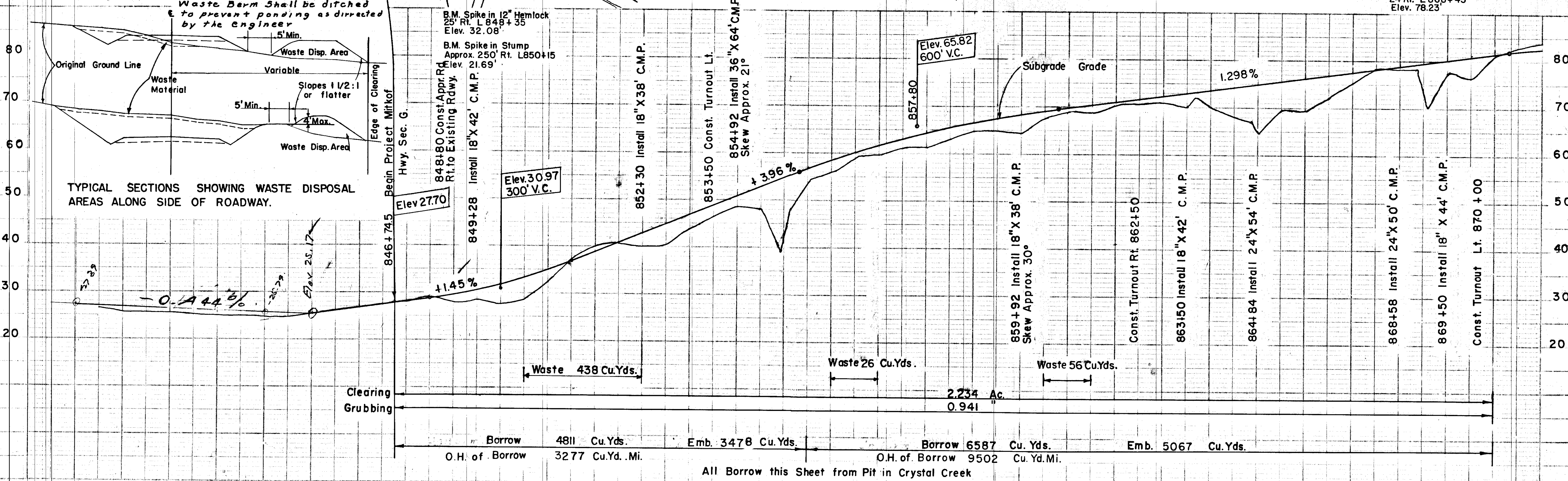
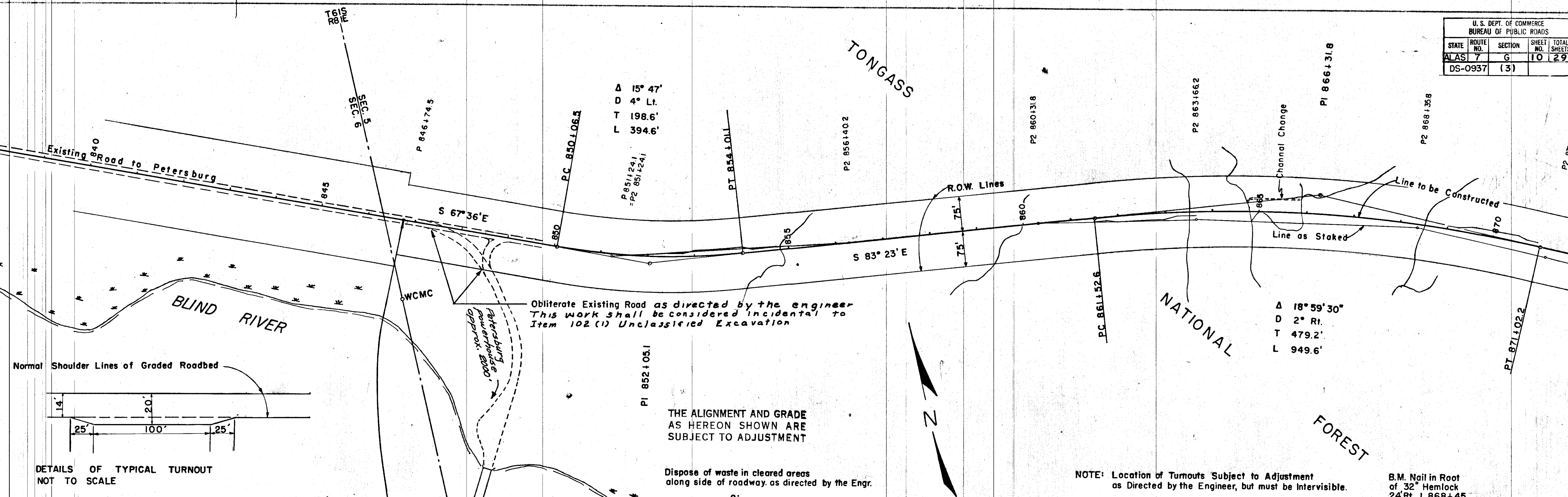
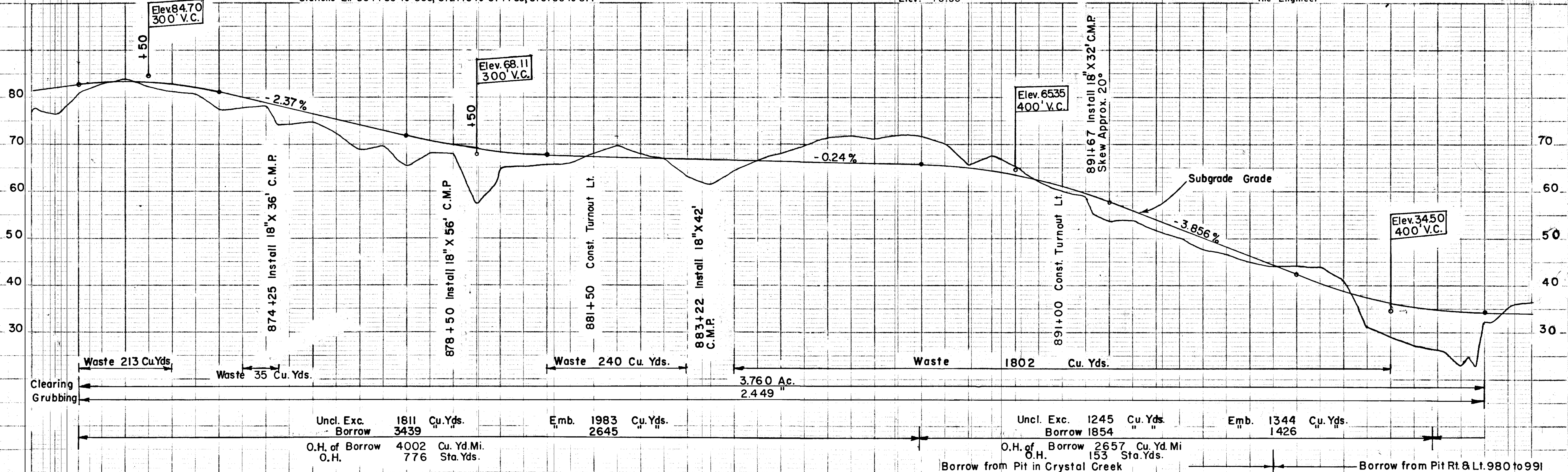
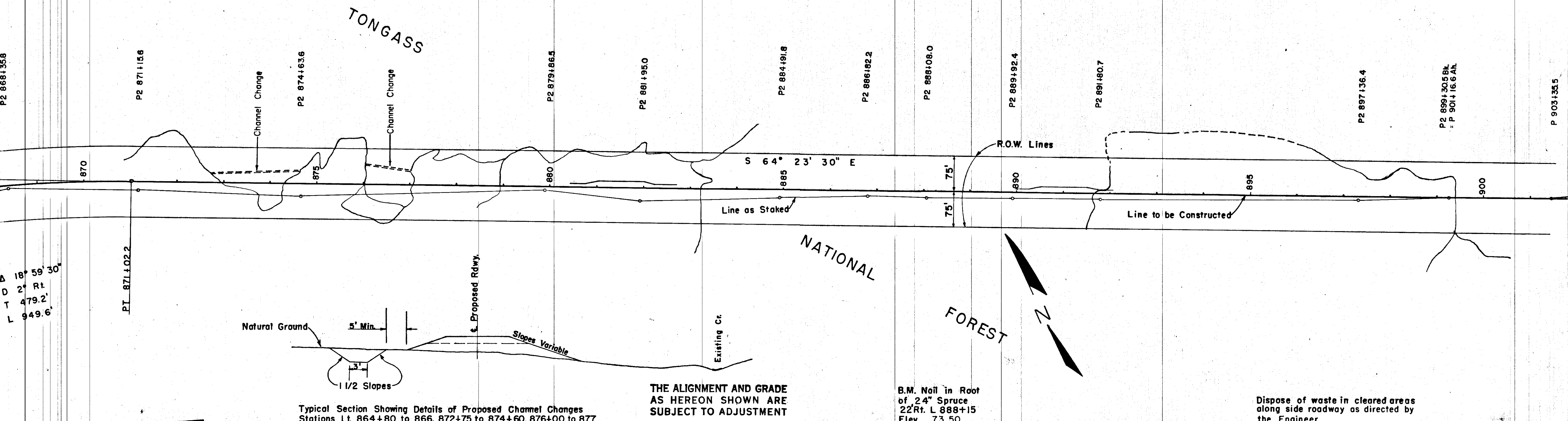


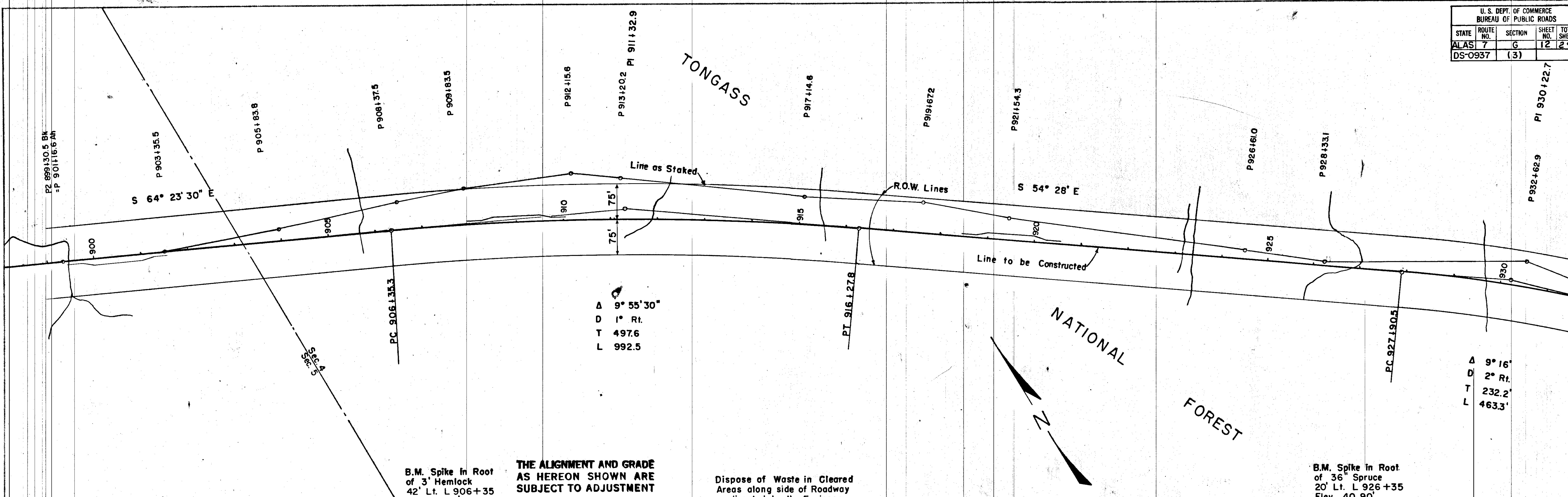
U.S. DEPT. OF COMMERCE BUREAU OF PUBLIC ROADS			
STATE	ROUTE NO.	SECTION	SHEET NO. TOTAL SHEETS
ALAS	7	G	10 29
DS-0937		(3)	



U. S. DEPT. OF COMMERCE BUREAU OF PUBLIC ROADS				
STATE	ROUTE NO.	SECTION	SHEET NO.	TOTAL SHEETS
AS	7	G	11	29
DS-0937 (3)				



U. S. DEPT. OF COMMERCE BUREAU OF PUBLIC ROADS				
STATE	ROUTE NO.	SECTION	SHEET NO.	TOTAL SHEETS
ALAS	7	G	12	29
DS-0937	(3)			

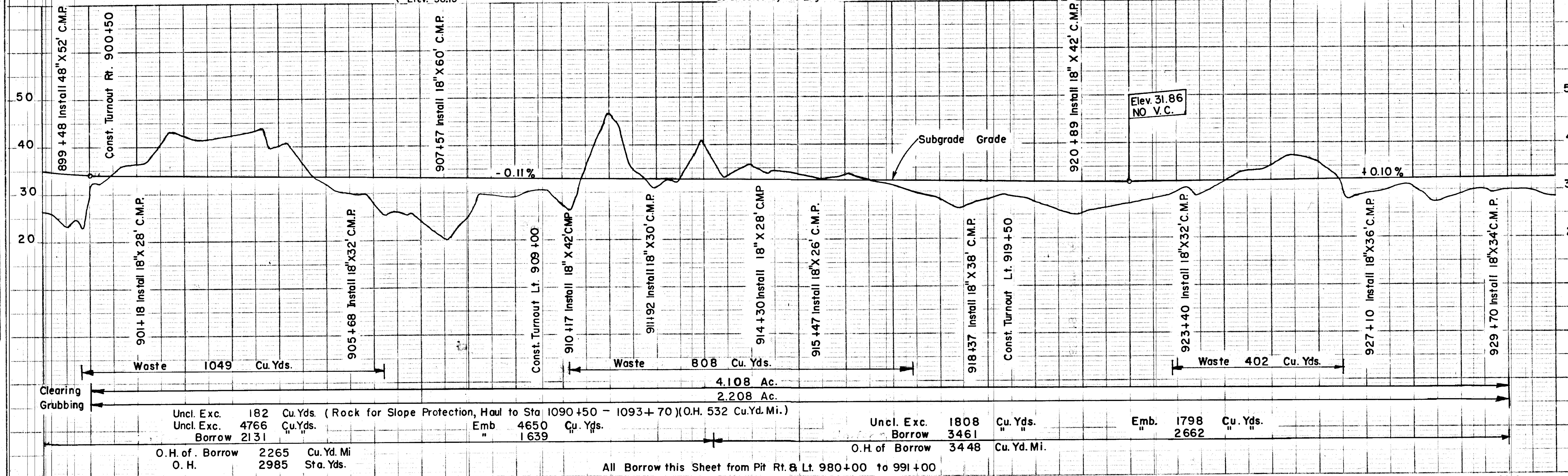


B.M. Spike in Root of 3' Hemlock
42' Lt. L 906+35
Elev. 38.15'

THE ALIGNMENT AND GRADE AS HEREON SHOWN ARE SUBJECT TO ADJUSTMENT

Dispose of Waste in Cleared Areas along side of Roadway as directed by the Engineer.

B.M. Spike in Root of 36" Spruce
20' Lt. L 926+35
Elev. 40.90'

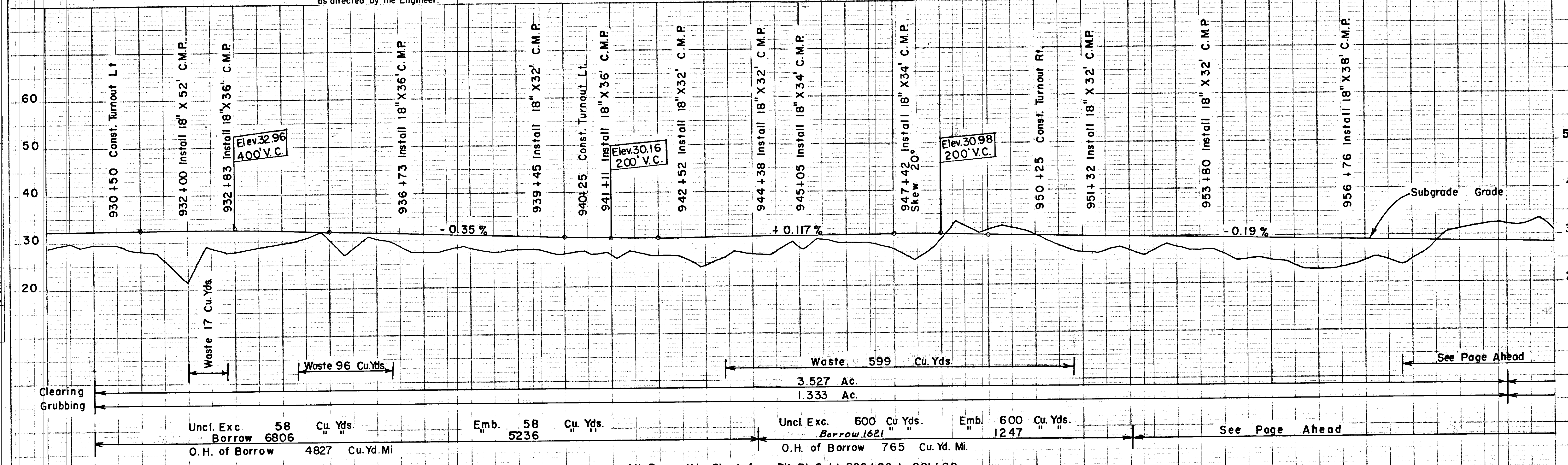
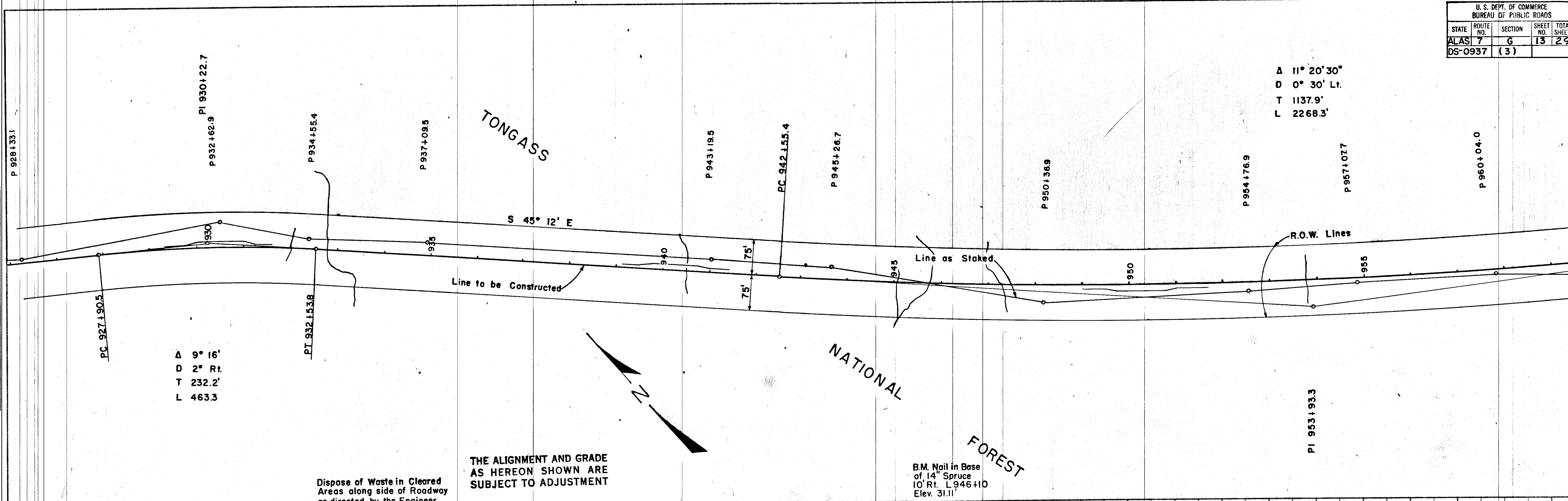


Uncl. Exc.	182	Cu.Yds.	(Rock for Slope Protection, Haul to Sta 1090+50 - 1093+70)(O.H. 532 Cu.Yd.Mi.)
Uncl. Exc.	4766	Cu.Yds.	
Borrow	2131	Cu.Yds.	
O. H. of . Borrow	2265	Cu.Yd. Mi	
O. H.	2985	Sta. Yds.	

Uncl. Exc.	1808	Cu. Yds.	Emb.	1798	Cu. Yds.
Borrow	3461	Cu. Yds.		2662	Cu. Yds.
O. H. of Borrow	3448	Cu. Yd. Mi.			

All Borrow this Sheet from Pit Rt. 8 Lt. 980+00 to 991+00

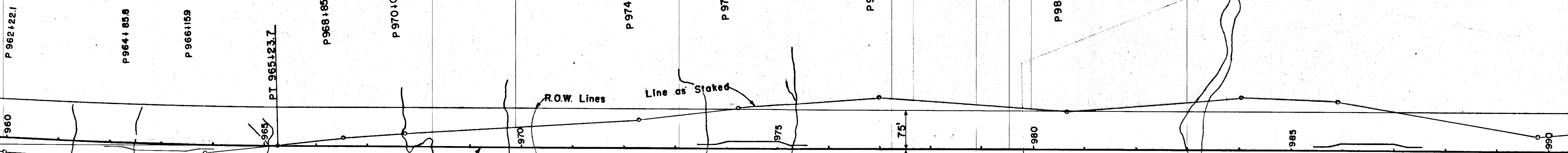
U.S. DEPT. OF COMMERCE BUREAU OF PUBLIC ROADS			
STATE	ROUTE NO.	SECTION	SHEET NO. TOTAL SHEETS
ALAS	7	6	13 29
DS-0937		(3)	



All Borrow this Sheet from Pit Rt. B Lt. 980+00 to 991+00

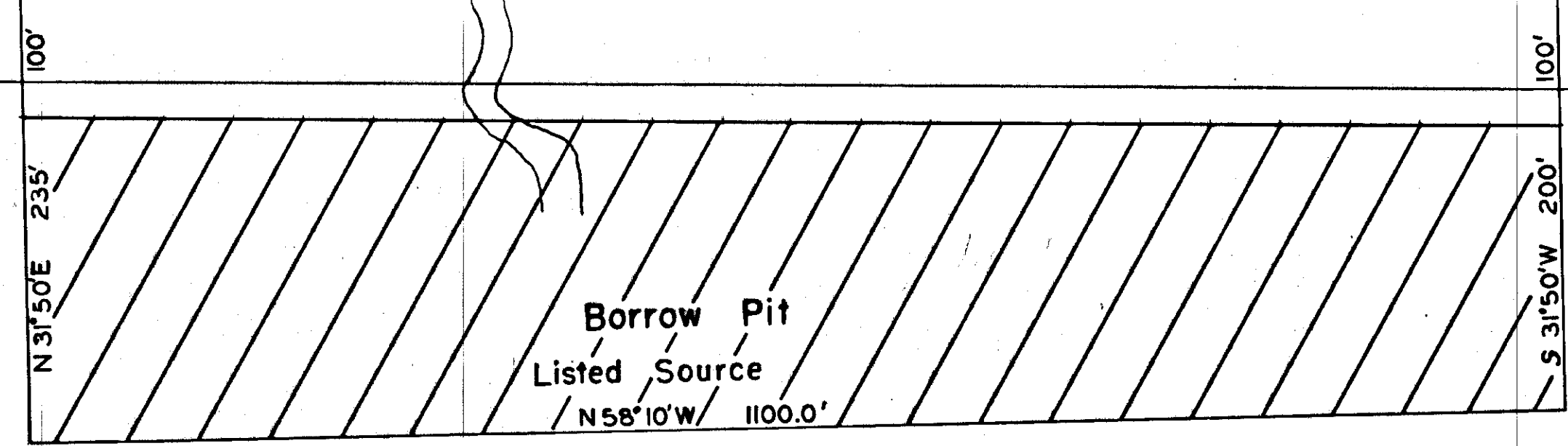
A 11° 20' 30"
D 0° 30' Lt.
T 1137.9
L 2268.3

TONGASS



S 56° 32' 30" E

NATIONAL FOREST

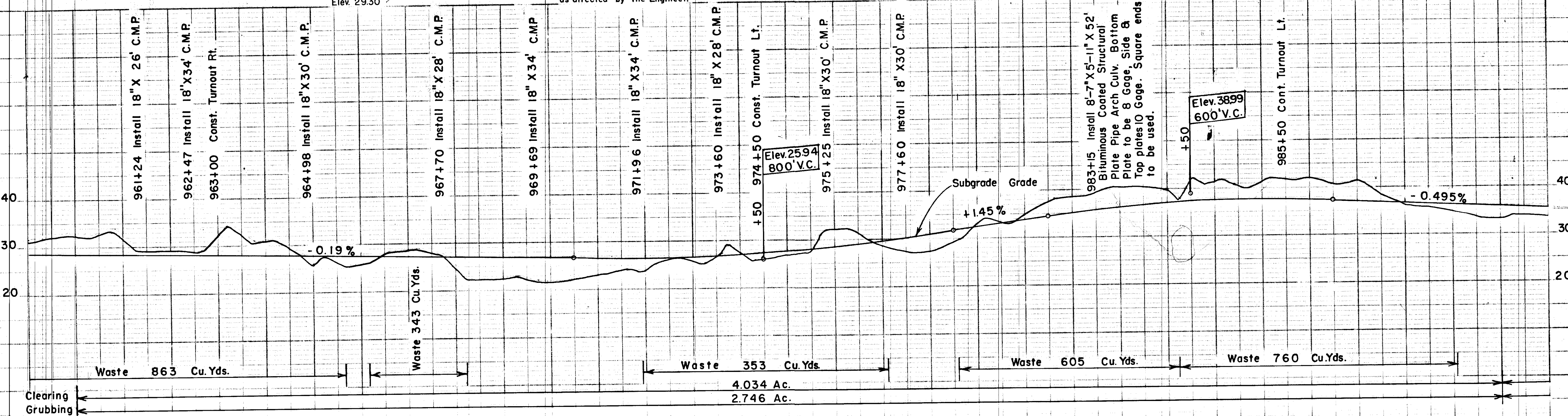


B.M. Spike in Root of 14' Spruce 10' Lt. L 966+00 Elev. 29.30

Dispose of Waste in Cleared Areas along side of Roadway as directed by the Engineer.

THE ALIGNMENT AND GRADE AS HEREON SHOWN ARE SUBJECT TO ADJUSTMENT

B.M. Spike in Root of 60' Spruce 90' Lt. L 986+15 Elev. 44.33

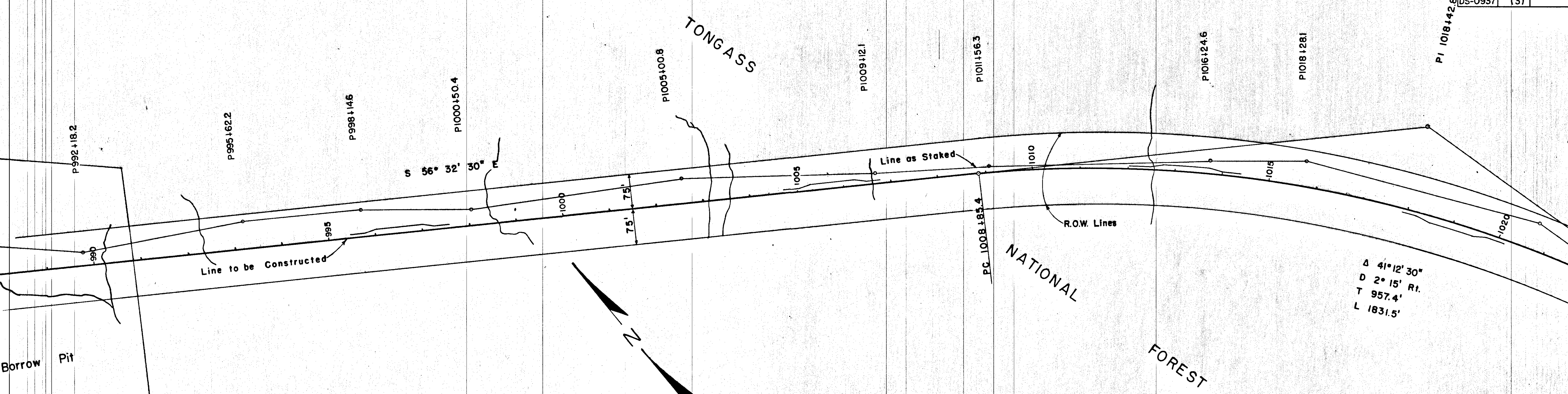


Uncl. Exc.	2020	Cu. Yds.	Emb.	2020	Cu. Yds.
Borrow	1765			1358	
O.H. of Borrow	518	Cu. Yd. Mi.			
O. H.	523	Sta. Yds.			

Uncl. Exc.	1547	Cu. Yds.	Emb.	1392	Cu. Yds.
Borrow	2478			1906	
O.H. of Borrow	129	Cu. Yd. Mi.			
O. H.	2319	Sta. Yds.			

All Borrow this Sheet from Pit Rt. & Lt. 980+00 to 991+00

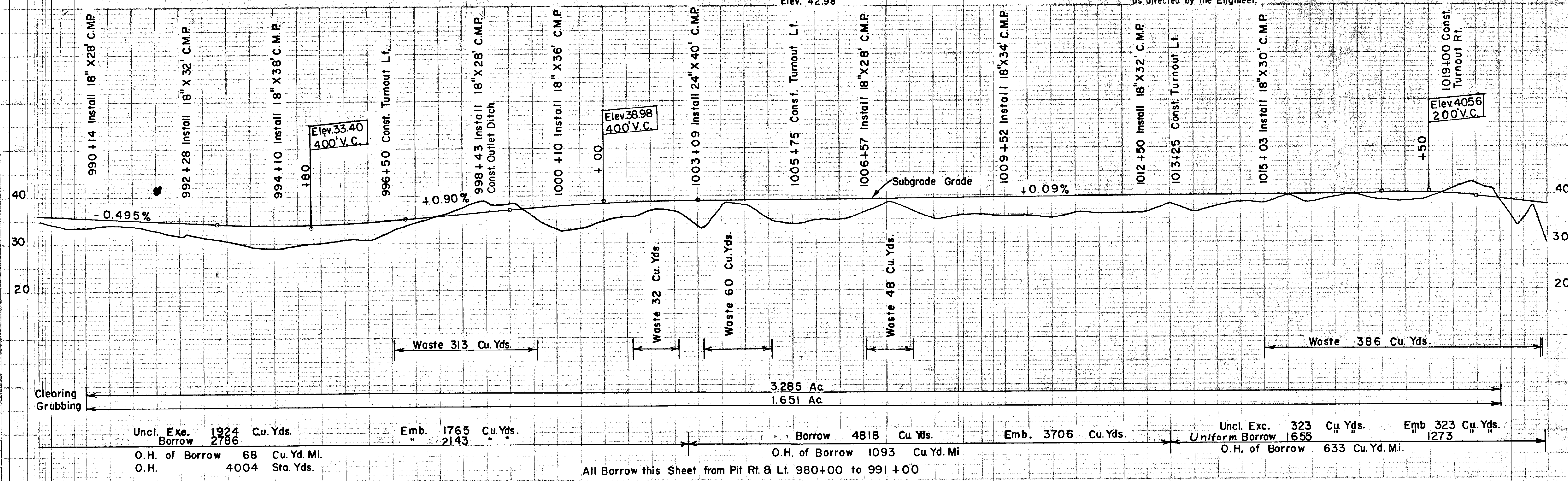
See Page Ahead



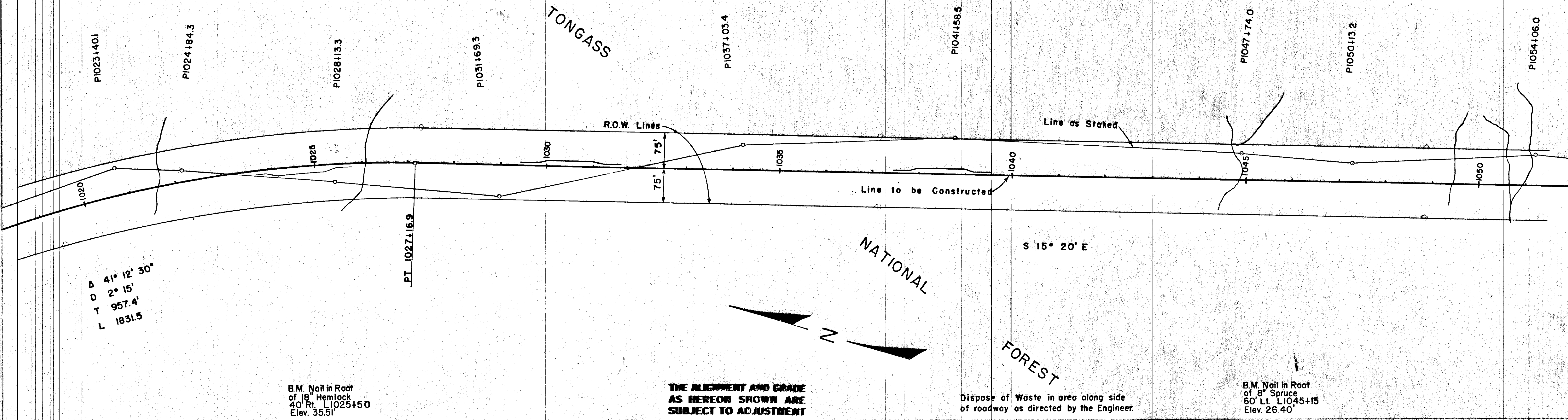
B.M. Nail in Root of 12" Hemlock
24' Lt. L 1005+70
Elev. 42.98'

THE ALIGNMENT AND GRADE AS HEREON SHOWN ARE SUBJECT TO ADJUSTMENT

Dispose of Waste in Cleared Areas along side of Roadway as directed by the Engineer.

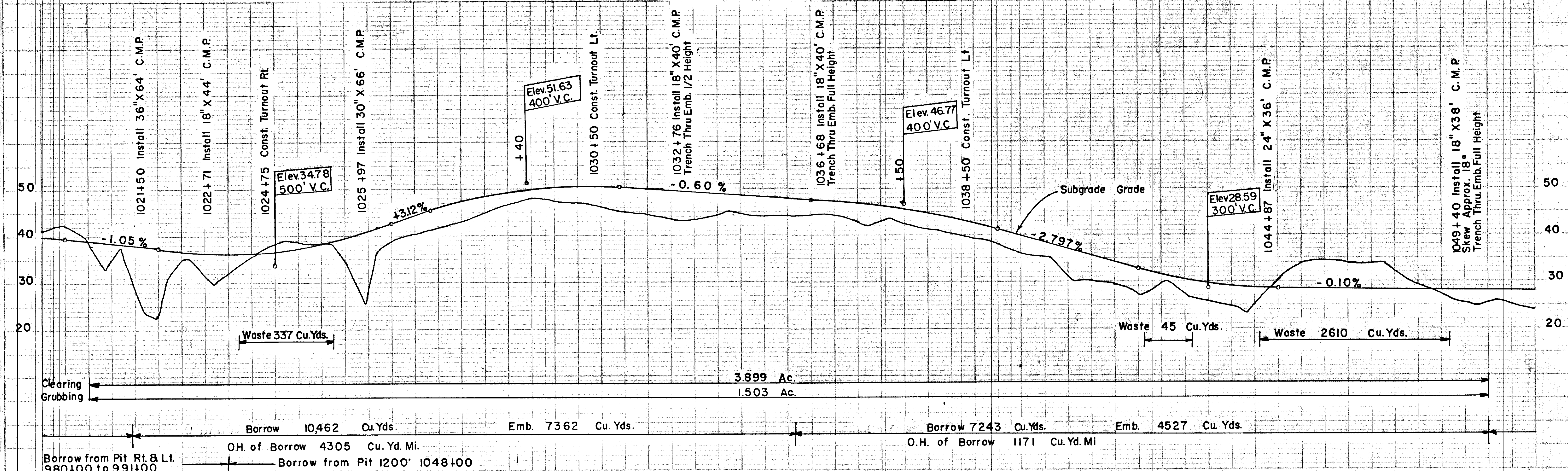


U. S. DEPT. OF COMMERCE BUREAU OF PUBLIC ROADS			
STATE	ROUTE NO.	SECTION	SHEET TOTAL SHEETS
ALAS	7	G	16 29
DS-0937		(3)	

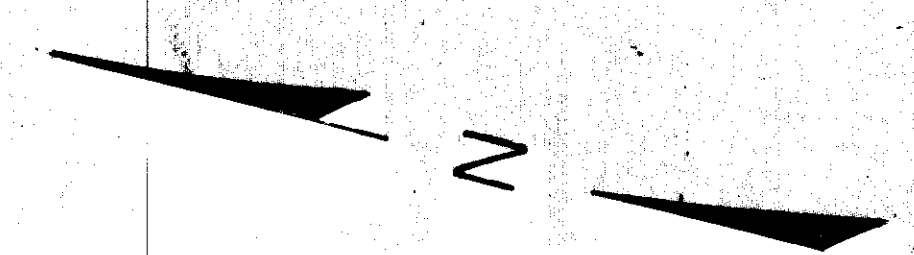
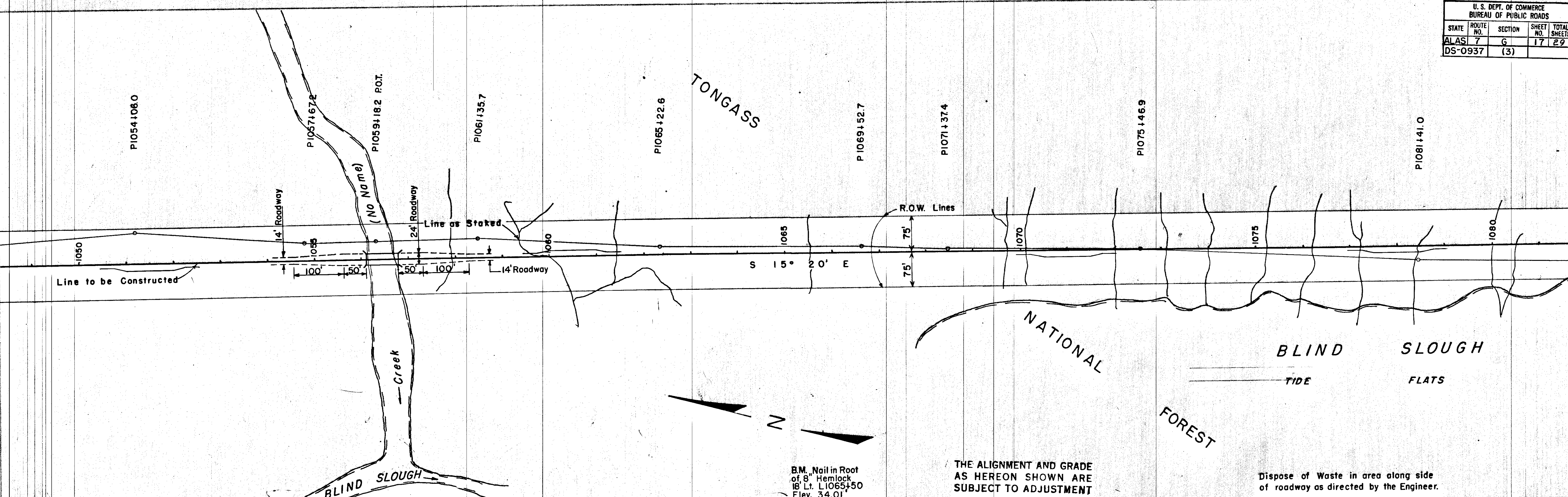


B.M. Nail in Root of 18" Hemlock 40' Rt. L1025+50 Elev. 35.51'

B.M. Nail in Root of 8" Spruce 60' Lt. L1045+15 Elev. 26.40'



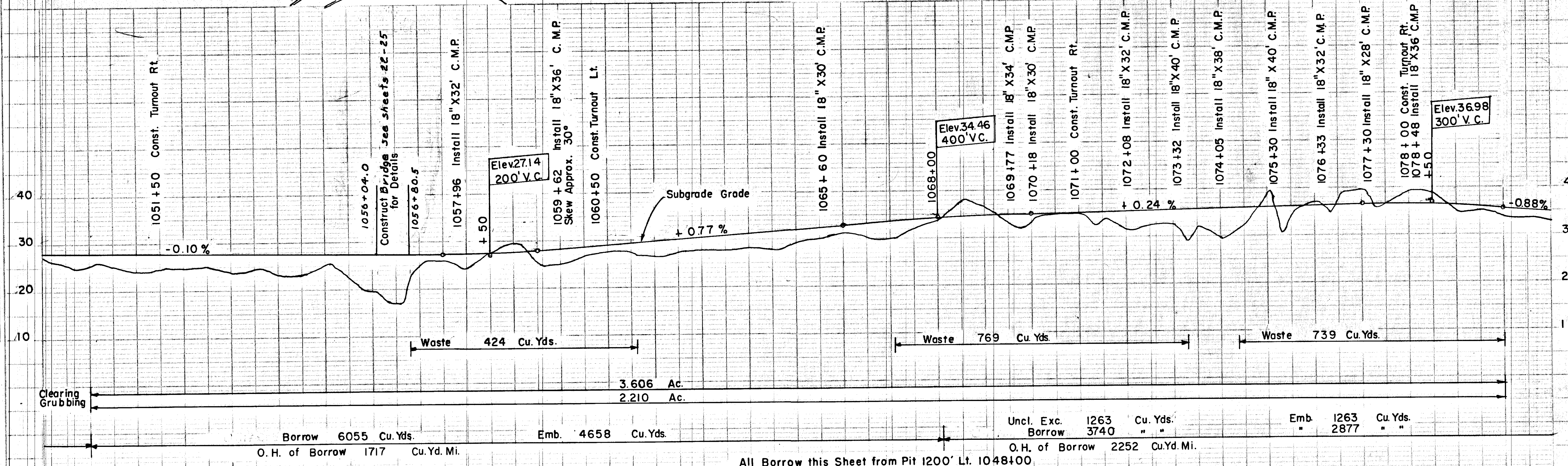
U.S. DEPT. OF COMMERCE BUREAU OF PUBLIC ROADS			
STATE	ROUTE NO.	SECTION	SHEET NO. TOTAL SHEETS
ALAS	7	6	17 29
DS-0937		(3)	



B.M. Nail in Root of 8" Hemlock 18' Lt. L1065+50 Elev. 34.01

THE ALIGNMENT AND GRADE AS HEREON SHOWN ARE SUBJECT TO ADJUSTMENT

Dispose of Waste in area along side of roadway as directed by the Engineer.



All Borrow this Sheet from Pit 1200' Lt. 1048+00

U. S. DEPT. OF COMMERCE BUREAU OF PUBLIC ROADS				
STATE	ROUTE NO.	SECTION	SHEET NO.	TOTAL SHEETS
ALAS	7	G	18	29
DS-0937	(3)			

Δ 6° 14'
D 1° Lt.
T 312.0'
L 623.3'

P 1081+41.0

P 1085+20.9

P 1090+80.0

P 1093+54.1

P 1096+65.5

P 1098+81.4

P 1103+43.5

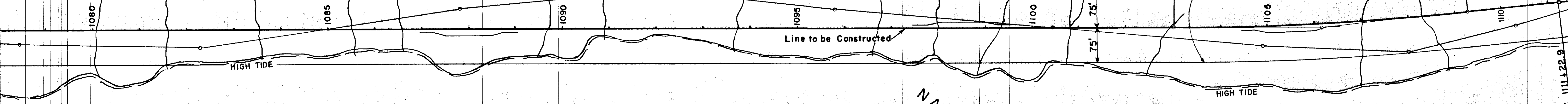
PC 1103+04.5

P 1107+91.4

P 1111+01.7

PT 1109+27.8

P 1113+37.3



TONGASS

NATIONAL FOREST

BLIND SLOUGH
Tide Flats

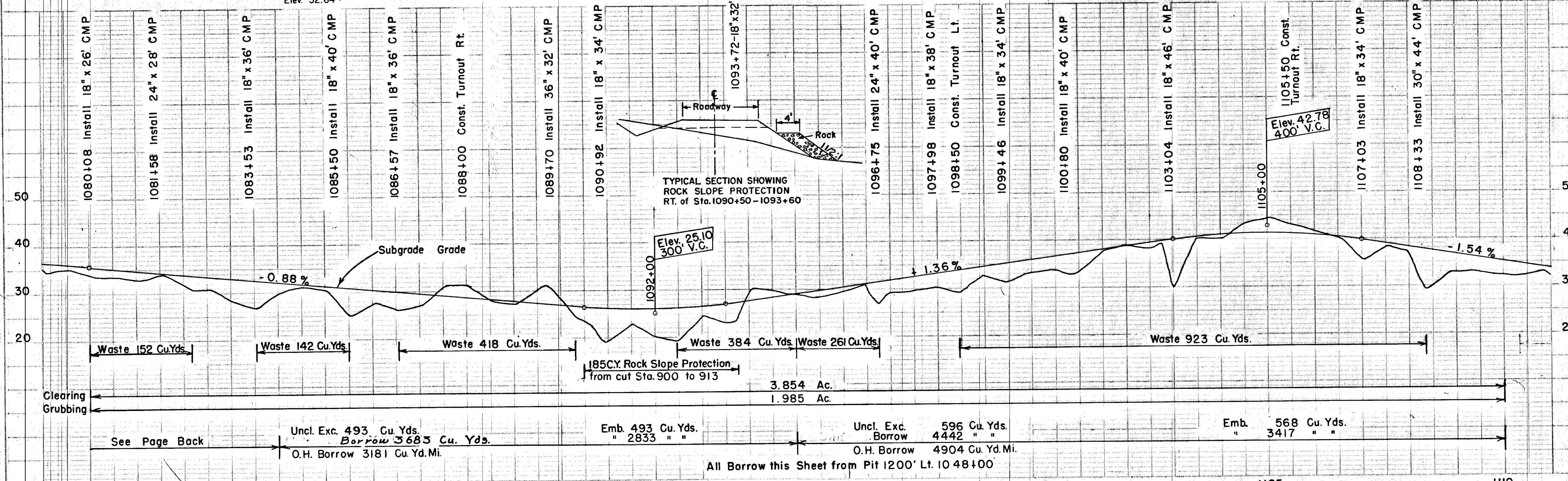
B.M. Nail in Root of 16" Hemlock 5' Rt. L 1084+70 Elev. 32.64'

THE ALIGNMENT AND GRADE AS HEREON SHOWN ARE SUBJECT TO ADJUSTMENT

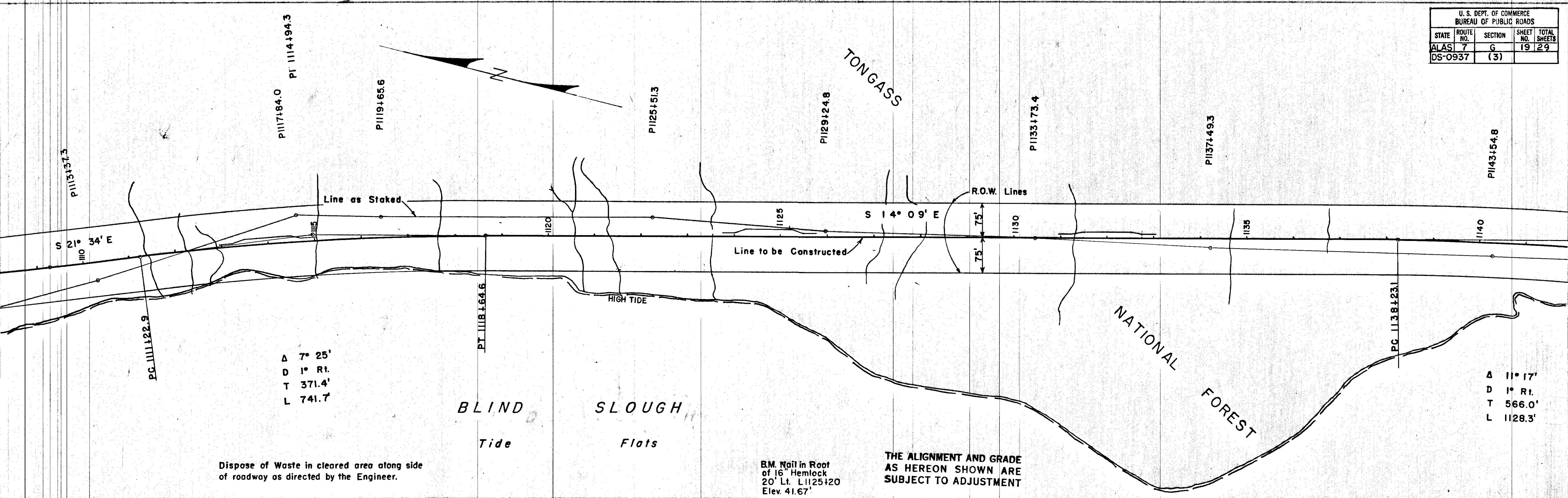
Dispose of Waste in area along side of roadway as directed by the Engineer.

B.M. Nail in Root of 18" Cedar 47' Rt. L 1104+75 Elev. 34.80'

P 1106+16.5



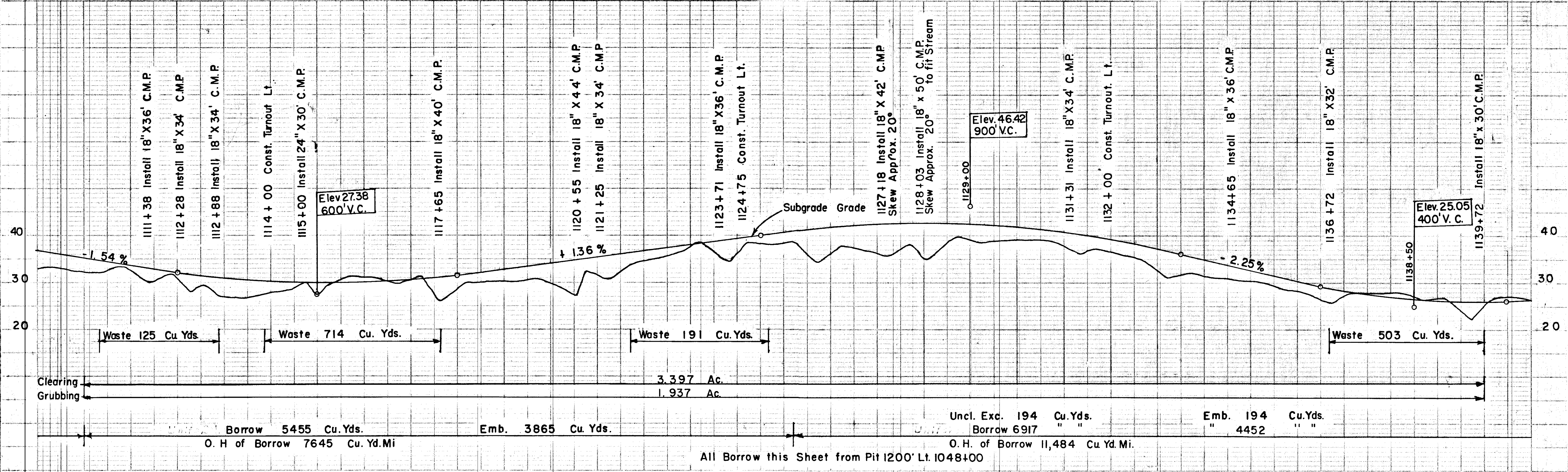
U. S. DEPT. OF COMMERCE BUREAU OF PUBLIC ROADS				
STATE	ROUTE NO.	SECTION	SHEET NO.	TOTAL SHEETS
ALAS	7	G	19	29
DS-0937		(3)		



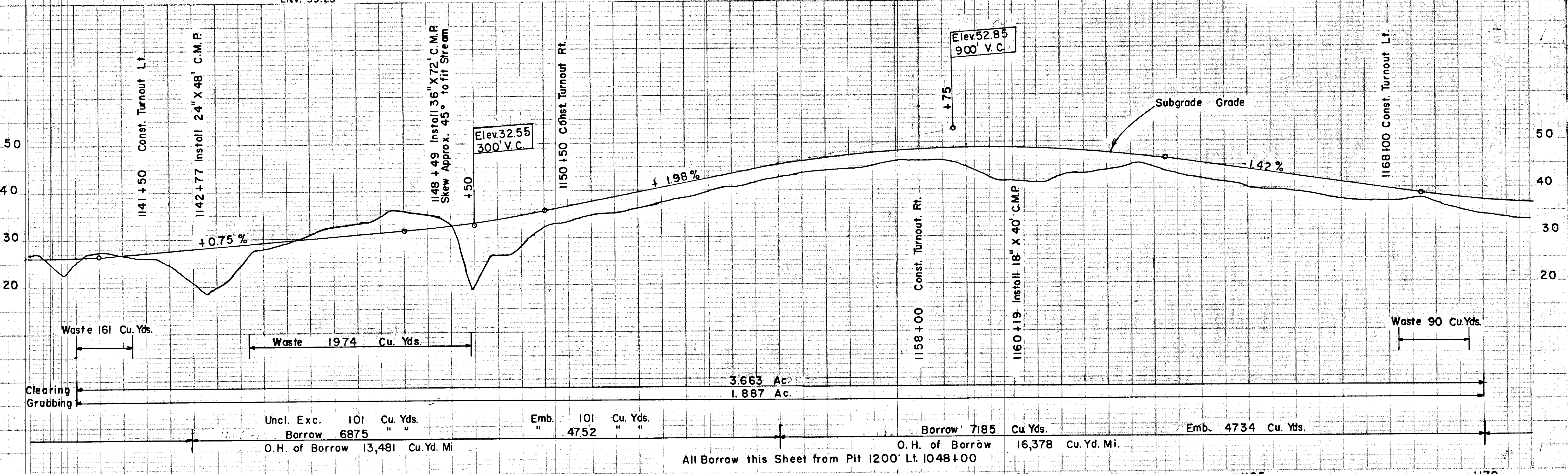
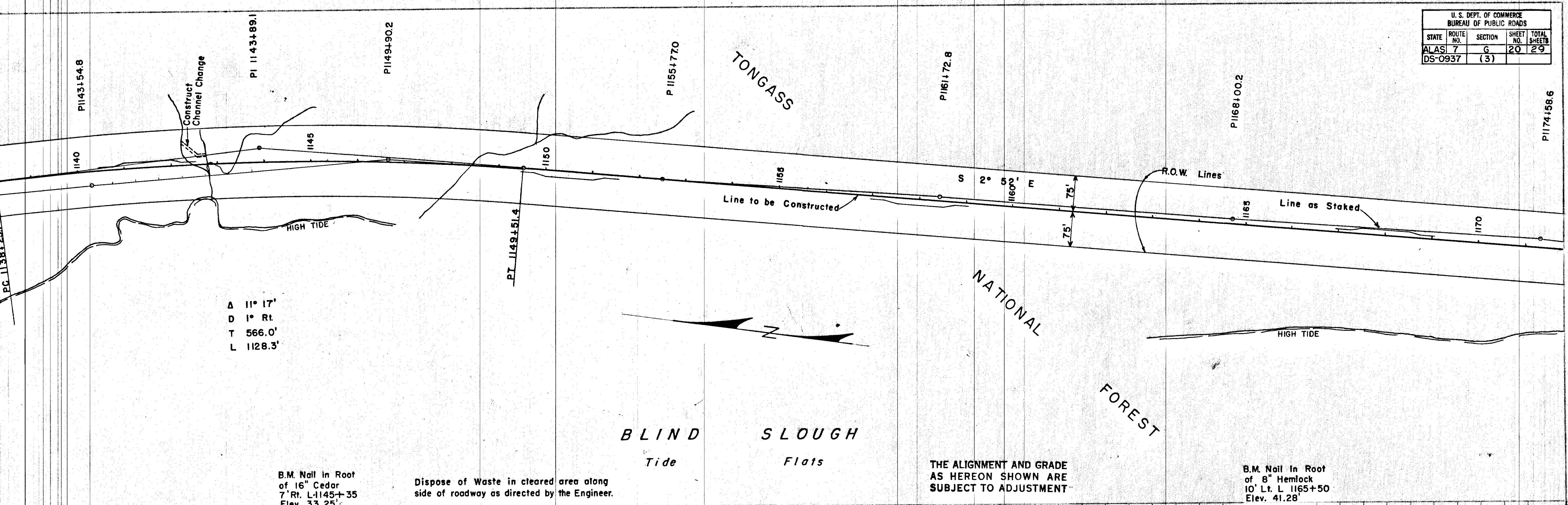
Dispose of Waste in cleared area along side of roadway as directed by the Engineer.

B.M. Nail in Root of 16" Hemlock 20' Lt. L1125+20 Elev. 41.67'

THE ALIGNMENT AND GRADE AS HEREON SHOWN ARE SUBJECT TO ADJUSTMENT

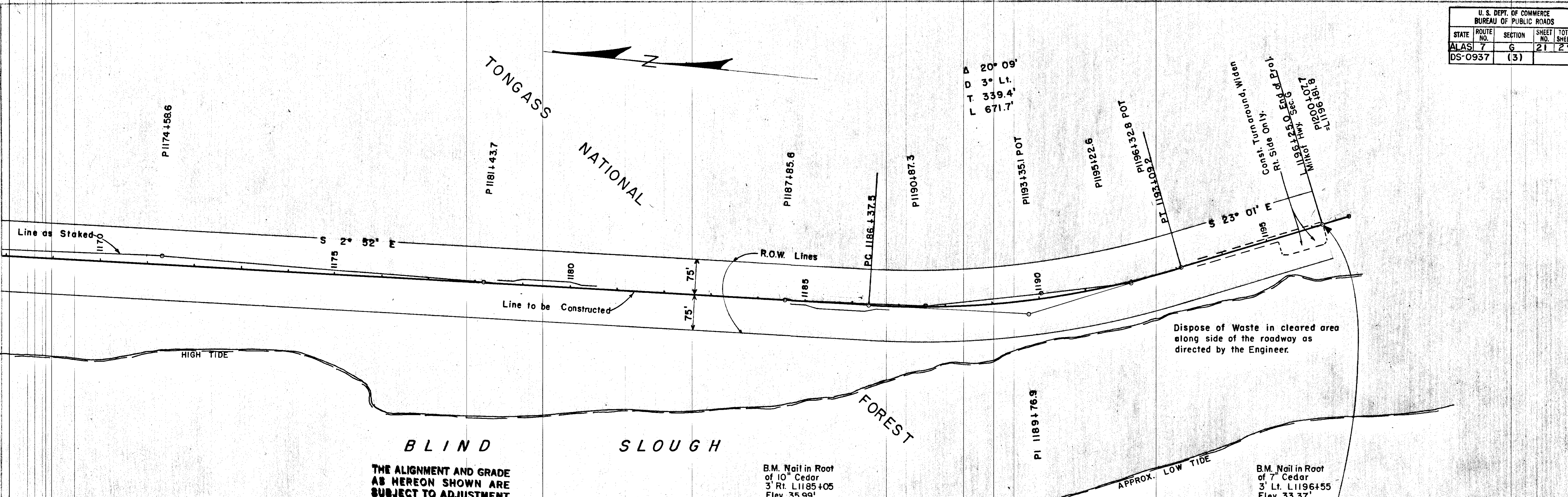


U. S. DEPT. OF COMMERCE BUREAU OF PUBLIC ROADS				
STATE	ROUTE NO.	SECTION	SHEET NO.	TOTAL SHEETS
ALAS	7	G	20	29
DS-0937			(3)	



Uncl. Exc.	101	Cu. Yds.	Emb.	101	Cu. Yds.	Borrow	7185	Cu. Yds.	Emb.	4734	Cu. Yds.
Borrow	6875	"		4752	"	O.H. of Borrow	16,378	Cu. Yd. Mi.			
O.H. of Borrow		13,481	Cu. Yd. Mi.								

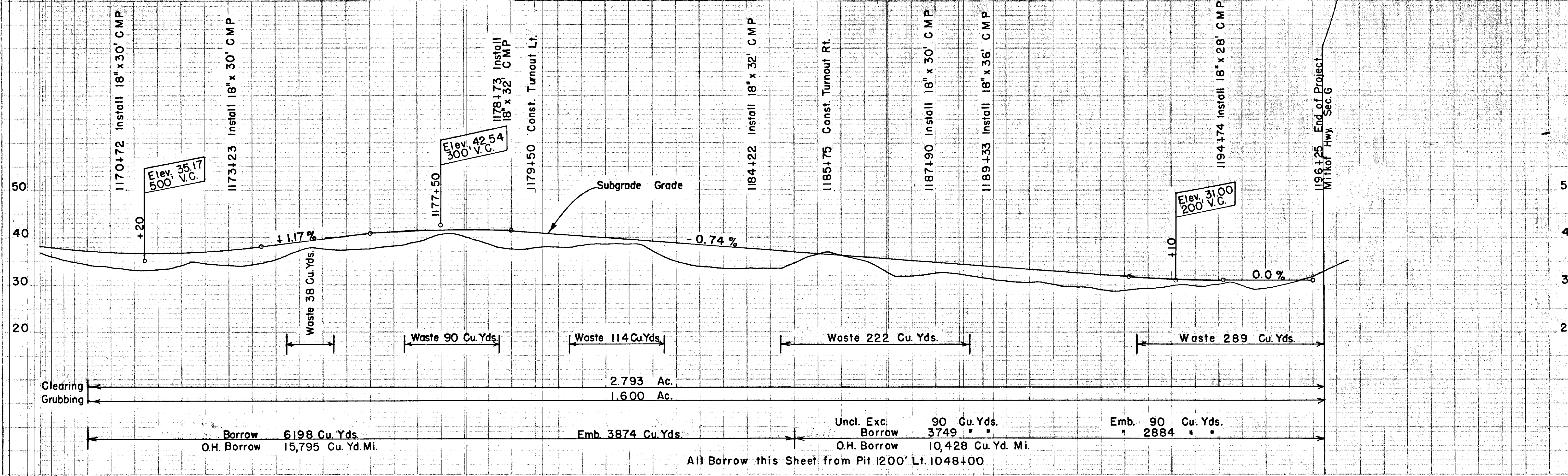
U. S. DEPT. OF COMMERCE BUREAU OF PUBLIC ROADS				
STATE	ROUTE NO.	SECTION	SHEET NO.	TOTAL SHEETS
ALAS	7	G	21	29
DS-0937		(3)		



THE ALIGNMENT AND GRADE AS HEREON SHOWN ARE SUBJECT TO ADJUSTMENT

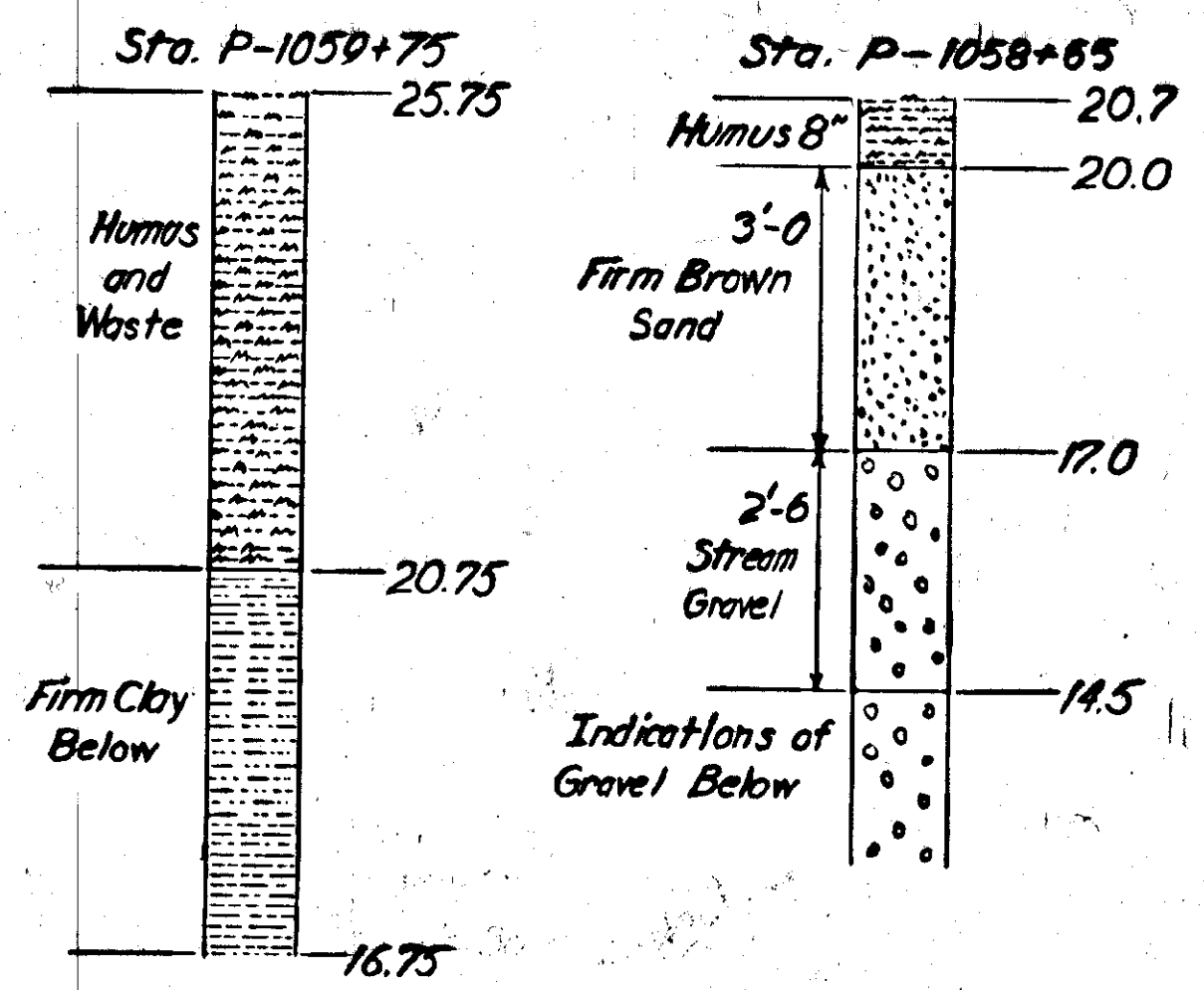
B.M. Nail in Root of 10" Cedar 3' Rt. L1185+05 Elev. 35.99'

B.M. Nail in Root of 7" Cedar 3' Lt. L1196+55 Elev. 33.37'



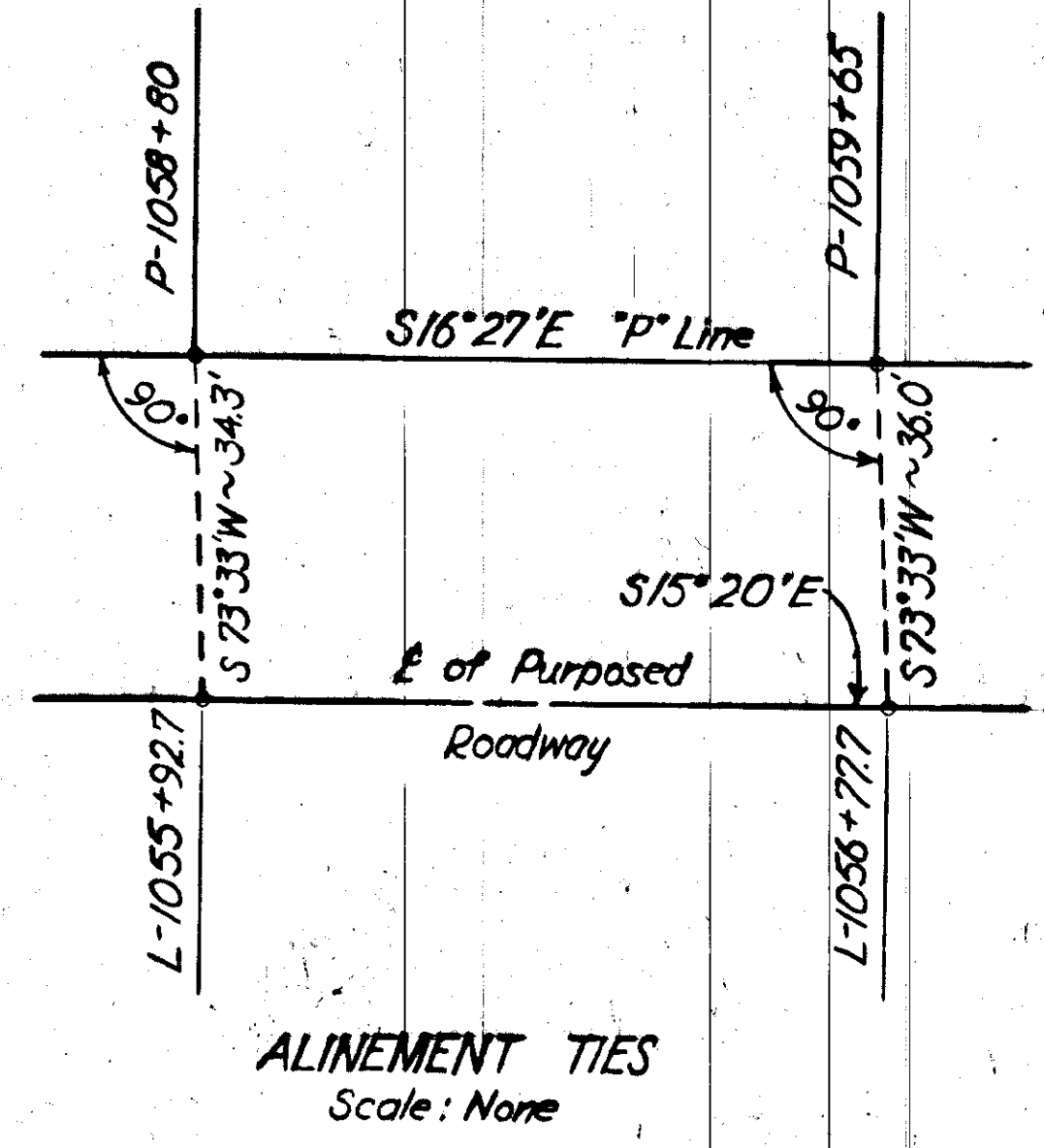
B.M. Sta. P-1059+48 ~ Elev. 22.00'
Spike in root 24" Spruce 6'rt.

TERRITORY	ROUTE	SECTION	YEAR	SHEET NO.	TOTAL SHEETS
ALASKA	FOREST HIGHWAY 7	6	1958	23	29

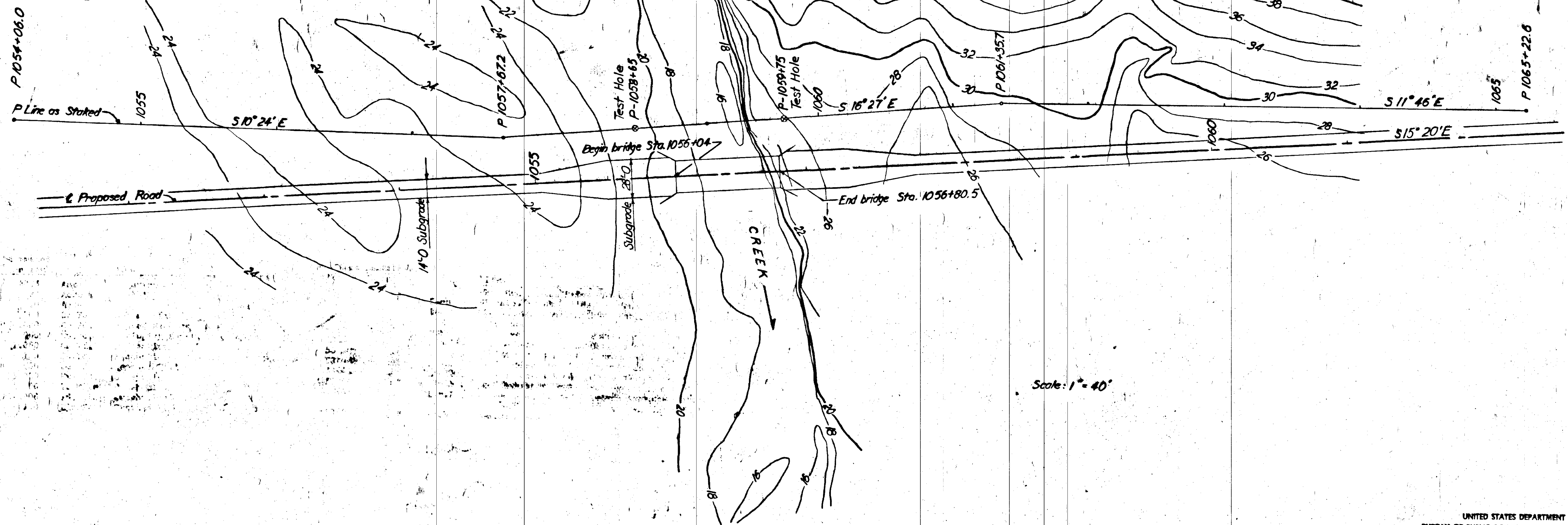


Note: The result of the test holes are for design and estimating purposes and are not guaranteed for construction.

TEST HOLES
Scale: 1/4" = 1'



ALINEMENT TIES
Scale: None



Scale: 1" = 40'

UNITED STATES DEPARTMENT OF COMMERCE
BUREAU OF PUBLIC ROADS, REGION 10, JUNEAU, ALASKA

STATION 1056
75'-0" X 24'-0" TIMBER TRESTLE
CONSISTING OF 3 SPANS AT 25'-0"
LOCATION PLAN

DISTRICT JUNEAU M: 20 LOADING