

INDEX OF SHEETS

SHEET NO.	DESCRIPTION
1	TITLE SHEET
2	ESTIMATE OF QUANTITIES & TRAFFIC CONTROL PLAN
3	SIGN SUMMARY
4	SIGNAL SUMMARY
5	SIGNAL, SIGNING AND MARKING PLAN
6	WIRING DIAGRAM & DETAILS
7	ELECTRICAL FLOOR PLAN

STATE OF ALASKA
DEPARTMENT OF TRANSPORTATION
AND
PUBLIC FACILITIES
SOUTHEAST REGION
DESIGN AND CONSTRUCTION DIVISION

**PSG-HAUGEN DRIVE & NORDIC DRIVE
EMERGENCY SIGNAL**

SIGNAL, SIGNING, PAVEMENT MARKING

PROJECT NO. STPG-0938(3)/71643

The following Standard Drawings apply to this project :

- A-1
- C-01.03, C-02.01,
- I-20.11
- S-00.00, S-05.00, S-20.00, S-30.01
- T-30.00, T-31.00, T-34.01, T-40.00, T-52.01

AS-BUILT PLANS

CONTRACTOR: CAVE ELECTRIC, INC.
ORIGINAL BID AMOUNT: \$ 98,980.00
PROJECT ENGINEER: THAD HOPPER
START DATE: MARCH 13, 1996
END DATE: JUNE 25, 1996

PROJECT SUMMARY	
LENGTH OF PROJECT	
NORDIC DRIVE	0.08 MILES
HAUGEN DRIVE	0.03 MILES
TOTAL LENGTH	0.11 MILES

DESIGN DESIGNATION				
ROADWAY SEGMENT	1996 A.D.T.	2016 A.D.T.	D.H.V.	V.
NORDIC DRIVE	7,142	7,889	10%	25 MPH
HAUGEN DRIVE	2,893	3,196	10%	25 MPH

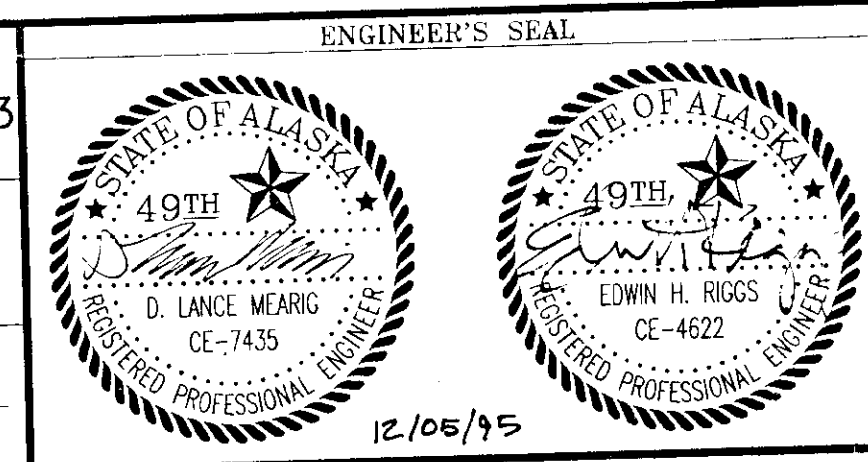
AS-BUILT

BY: KK DATE: 7/33/99

STATE OF ALASKA
DEPARTMENT OF TRANSPORTATION
AND
PUBLIC FACILITIES
SOUTHEAST REGION DESIGN SECTION

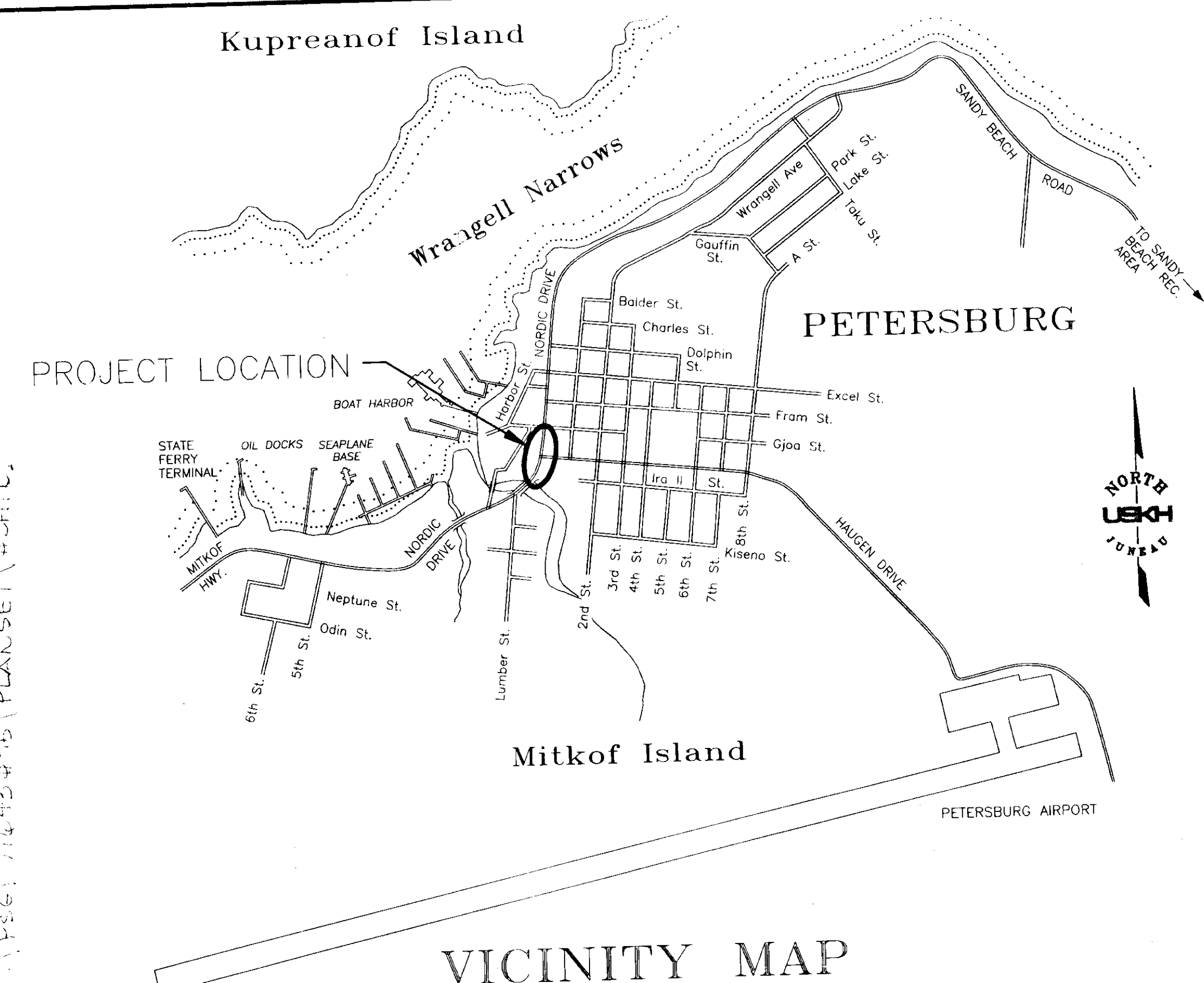
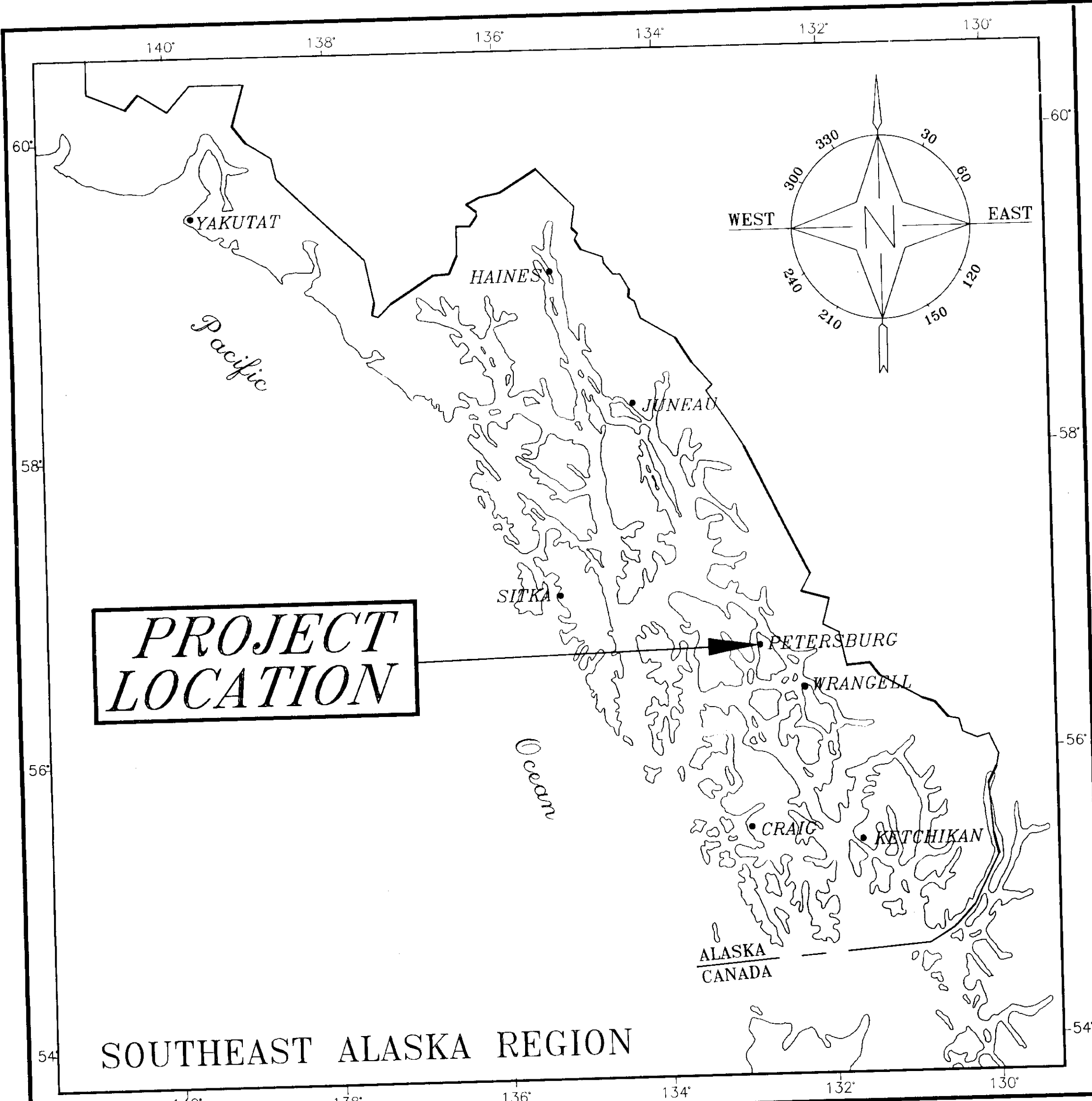
APPROVED *[Signature]* Date 12/12/96
S.E. REGION PRE-CONSTRUCTION ENGINEER
APPROVED *[Signature]* Date 12/14/95
S.E. REGION DESIGN & CONSTRUCTION DIRECTOR

PROJECT NUMBER:
STPG-0938(3)/71643
DATE:
1995
SHEET 1 OF 7



BY:	DATE:	DESCRIPTION OF CHANGE:

RECORD OF REVISIONS

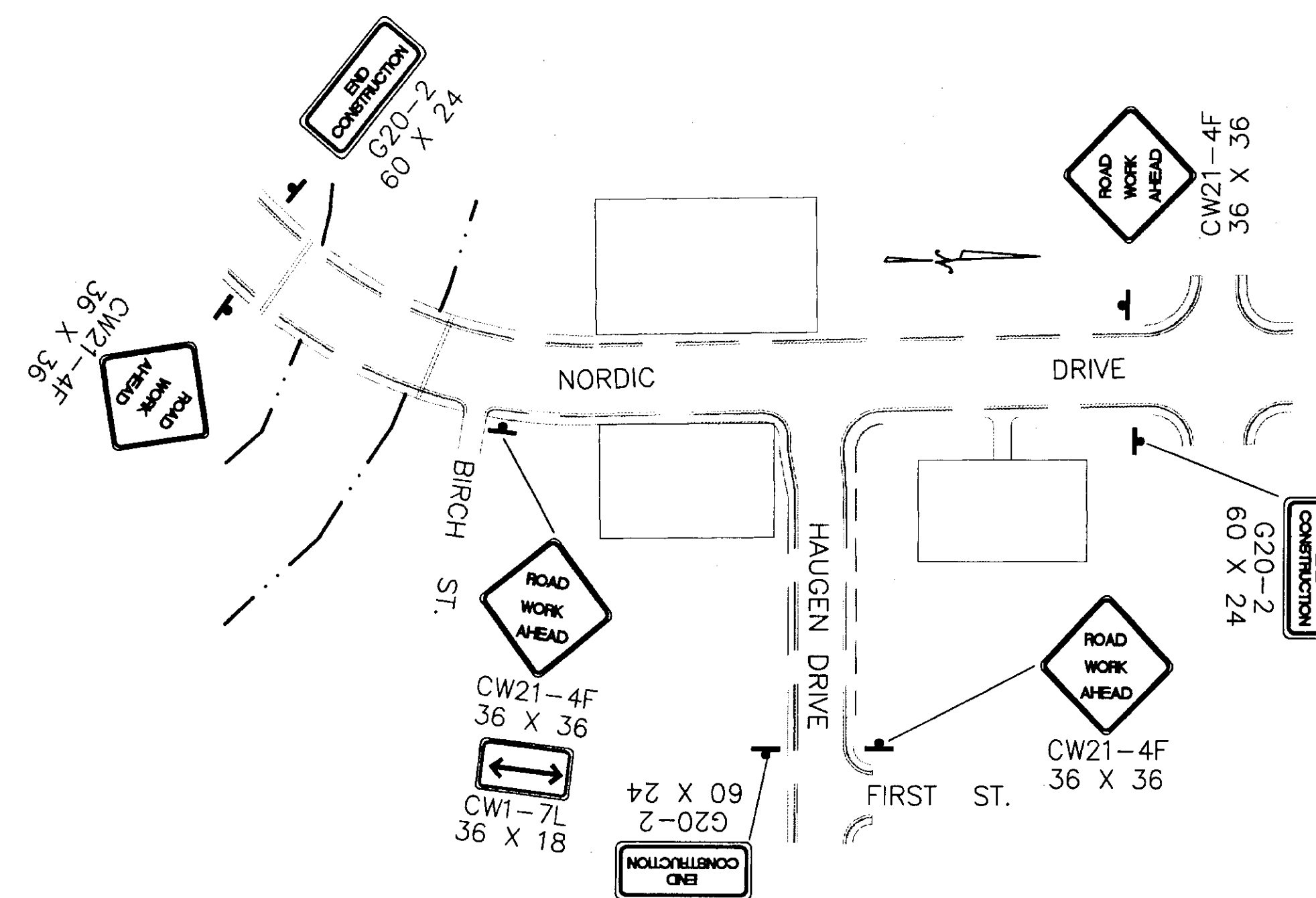


DATE: 12/23/95
 BY: K.K.
 PROJECT NO: STPG-0938(3)/71643
 PLANSET #CHTC

ESTIMATE OF QUANTITIES

TRAFFIC CONTROL PLAN

ITEM NO.	ITEM	UNIT	TOTAL
120(1)	DBE ADJUSTMENT	CONTINGENT SUM	ALL REQ'D
615(1)	STANDARD SIGNS	SQUARE FOOT	75
615(2)	REMOVE AND RELOCATE EXISTING SIGNS	EACH	1
660(11)	POLE BASE EXTRA WORK C.C. NO. 1	LUMP SUM	ALL REQ'D
640(1)	MOBILIZATION AND DEMOBILIZATION	LUMP SUM	ALL REQ'D
660(12)	J-BOX RELATION C.C. NO. 1	LUMP SUM	ALL REQ'D
643(2)	TRAFFIC MAINTENANCE	LUMP SUM	ALL REQ'D
643(3)	PERMANENT CONSTRUCTION SIGNING	LUMP SUM	ALL REQ'D
643(4)	CONSTRUCTION SIGN	EACH PER DAY	100
643(5)	TYPE II BARRICADE	EACH PER DAY	100
643(7)	TRAFFIC CONE	EACH PER DAY	500
643(15)	FLAGGING	HOUR	60
660(13)	REMOTE PHOTOELECTRIC CONTROL C.C. NO. 2	LUMP SUM	ALL REQ'D
660(1)	TRAFFIC SIGNAL SYSTEM COMPLETE	LUMP SUM	ALL REQ'D
670(1)	PAINTED TRAFFIC MARKINGS	LUMP SUM	ALL REQ'D
660(14)	NORDIC DRIVE SIGNAL CHANGE C.C. NO. 3	LUMP SUM	ALL REQ'D

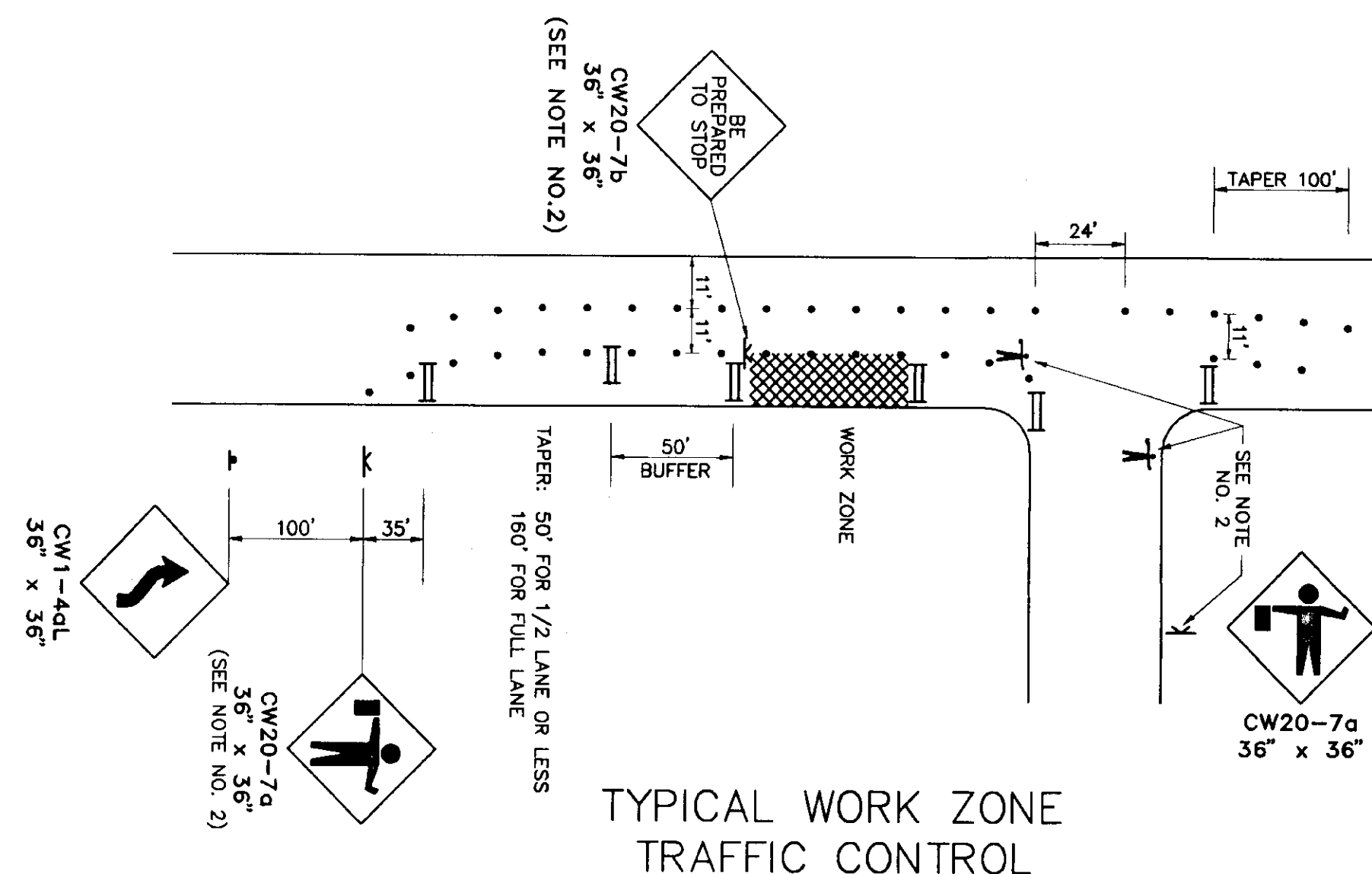


PERMANENT CONSTRUCTION SIGNING

TRAFFIC CONTROL NOTES

AS-BUILT
BY: KK DATE: 7/23/99

- TWO LANES OF TRAFFIC SHALL BE MAINTAINED AT ALL TIMES.
- FLAGGER(S) REQUIRED WHEN WORK RESTRICTS INTERSECTION SIGHT DISTANCE BELOW 350 FEET. THE CW20-7a AND CW20-7b SIGNS SHALL BE USED WHEN A FLAGGER IS PRESENT.
- TWO-WAY COMMUNICATIONS SHALL BE MAINTAINED BETWEEN FLAGGERS AT ALL TIMES, EITHER THROUGH VISUAL CONTACT OR THROUGH RADIO CONTACT.
- DRIVING LANES SHALL BE A MINIMUM OF 11' WIDE.
- INTERSECTING SIDE STREETS SHALL REMAIN ACCESSIBLE AT ALL TIMES.
- CONES SHALL BE USED FOR CHANNELING TRAFFIC THROUGH THE CONSTRUCTION AREA, CONES SHALL HAVE A MINIMUM HEIGHT OF 28 INCHES. MAXIMUM SPACING BETWEEN THE CONES SHALL BE 20 FEET.
- PEDESTRIANS SHALL BE ROUTED TO THE OTHER SIDE OF THE STREET WHEN WORKING IN THE SIDEWALK. PEDESTRIAN WAYS SHALL BE UNOBSTRUCTED DURING NON-WORK HOURS AND IN NON-WORK AREAS.
- A SINGLE FLAGGER MAY BE APPROVED BY THE ENGINEER IF THE ENTIRE WORK AREA IS LESS THAN 50 FT. LONG AND IS VISIBLE FROM BOTH DIRECTIONS.

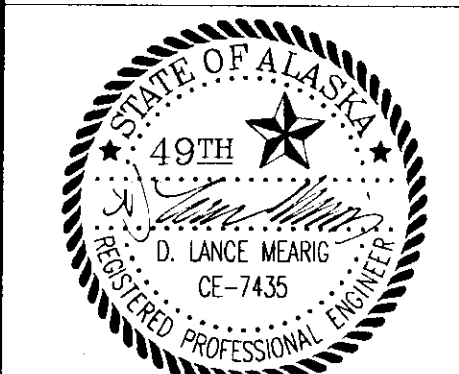


TYPICAL WORK ZONE TRAFFIC CONTROL

- LEGEND:
- TYPE II BARRICADES
 - DRUMS OR CONES
 - SIGN (POST)
 - SIGN (TEMPORARY)
 - FLAGGER STATION

NOTE: DO NOT SCALE FROM THESE PLANS-USE DIMENSIONS

ENGINEER'S SEAL



STATE OF ALASKA
DEPARTMENT OF TRANSPORTATION
AND PUBLIC FACILITIES
SOUTHEAST REGION DESIGN & CONSTRUCTION

PSG-HAUGEN DRIVE & NORDIC DRIVE
EMERGENCY SIGNAL
ESTIMATE OF QUANTITIES & TRAFFIC CONTROL PLAN

DESIGNED BY:
DLM
DRAWN BY:
CMB
CHECKED BY:
DLM

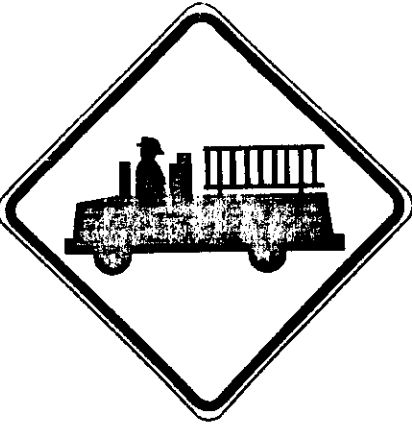


PROJECT NO.
STPG-0938(3)/71643
DATE:
APRIL 1995
SHEET 2 OF 7

PATH:	DATE:	DESCRIPTION OF CHANGE:
4694E01.DWG		

RECORD OF REVISIONS

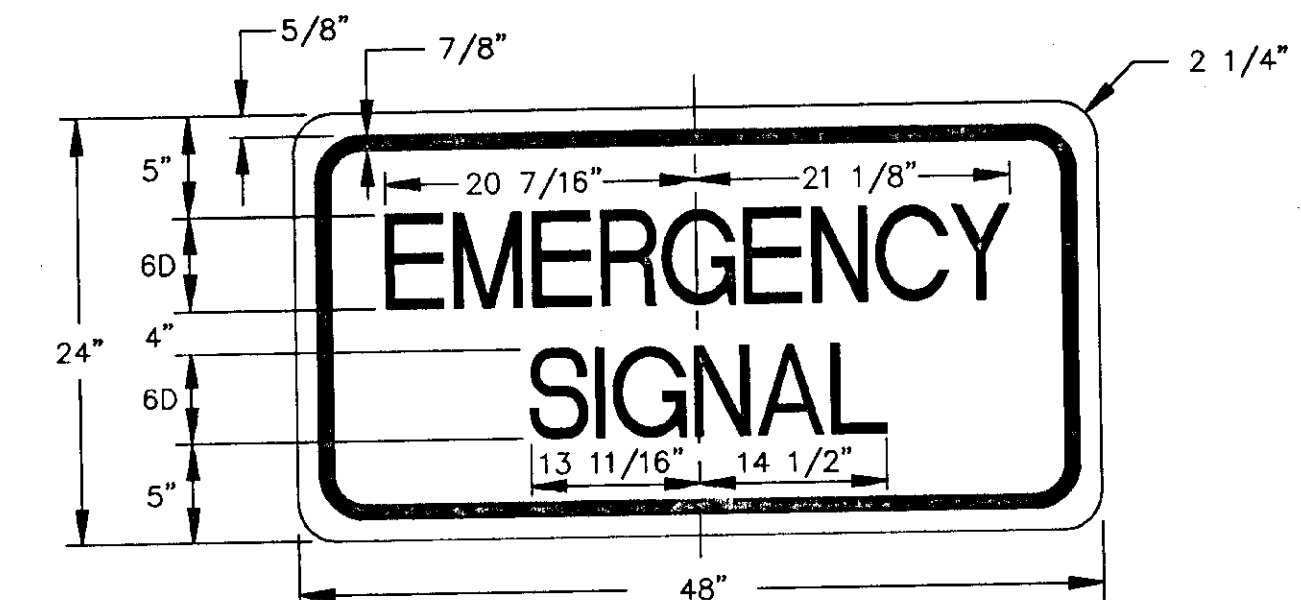
1. SEE PLAN SET FOR SIGNING
 2. SEE PLAN SET FOR SIGNING
 3. SEE PLAN SET FOR SIGNING
 4. SEE PLAN SET FOR SIGNING
 5. SEE PLAN SET FOR SIGNING
 6. SEE PLAN SET FOR SIGNING
 7. SEE PLAN SET FOR SIGNING
 8. SEE PLAN SET FOR SIGNING
 9. SEE PLAN SET FOR SIGNING
 10. SEE PLAN SET FOR SIGNING
 11. SEE PLAN SET FOR SIGNING
 12. SEE PLAN SET FOR SIGNING
 13. SEE PLAN SET FOR SIGNING
 14. SEE PLAN SET FOR SIGNING
 15. SEE PLAN SET FOR SIGNING
 16. SEE PLAN SET FOR SIGNING
 17. SEE PLAN SET FOR SIGNING
 18. SEE PLAN SET FOR SIGNING
 19. SEE PLAN SET FOR SIGNING
 20. SEE PLAN SET FOR SIGNING
 21. SEE PLAN SET FOR SIGNING
 22. SEE PLAN SET FOR SIGNING
 23. SEE PLAN SET FOR SIGNING
 24. SEE PLAN SET FOR SIGNING
 25. SEE PLAN SET FOR SIGNING
 26. SEE PLAN SET FOR SIGNING
 27. SEE PLAN SET FOR SIGNING
 28. SEE PLAN SET FOR SIGNING
 29. SEE PLAN SET FOR SIGNING
 30. SEE PLAN SET FOR SIGNING
 31. SEE PLAN SET FOR SIGNING
 32. SEE PLAN SET FOR SIGNING
 33. SEE PLAN SET FOR SIGNING
 34. SEE PLAN SET FOR SIGNING
 35. SEE PLAN SET FOR SIGNING
 36. SEE PLAN SET FOR SIGNING
 37. SEE PLAN SET FOR SIGNING
 38. SEE PLAN SET FOR SIGNING
 39. SEE PLAN SET FOR SIGNING
 40. SEE PLAN SET FOR SIGNING
 41. SEE PLAN SET FOR SIGNING
 42. SEE PLAN SET FOR SIGNING
 43. SEE PLAN SET FOR SIGNING
 44. SEE PLAN SET FOR SIGNING
 45. SEE PLAN SET FOR SIGNING
 46. SEE PLAN SET FOR SIGNING
 47. SEE PLAN SET FOR SIGNING
 48. SEE PLAN SET FOR SIGNING
 49. SEE PLAN SET FOR SIGNING
 50. SEE PLAN SET FOR SIGNING
 51. SEE PLAN SET FOR SIGNING
 52. SEE PLAN SET FOR SIGNING
 53. SEE PLAN SET FOR SIGNING
 54. SEE PLAN SET FOR SIGNING
 55. SEE PLAN SET FOR SIGNING
 56. SEE PLAN SET FOR SIGNING
 57. SEE PLAN SET FOR SIGNING
 58. SEE PLAN SET FOR SIGNING
 59. SEE PLAN SET FOR SIGNING
 60. SEE PLAN SET FOR SIGNING
 61. SEE PLAN SET FOR SIGNING
 62. SEE PLAN SET FOR SIGNING
 63. SEE PLAN SET FOR SIGNING
 64. SEE PLAN SET FOR SIGNING
 65. SEE PLAN SET FOR SIGNING
 66. SEE PLAN SET FOR SIGNING
 67. SEE PLAN SET FOR SIGNING
 68. SEE PLAN SET FOR SIGNING
 69. SEE PLAN SET FOR SIGNING
 70. SEE PLAN SET FOR SIGNING
 71. SEE PLAN SET FOR SIGNING
 72. SEE PLAN SET FOR SIGNING
 73. SEE PLAN SET FOR SIGNING
 74. SEE PLAN SET FOR SIGNING
 75. SEE PLAN SET FOR SIGNING
 76. SEE PLAN SET FOR SIGNING
 77. SEE PLAN SET FOR SIGNING
 78. SEE PLAN SET FOR SIGNING
 79. SEE PLAN SET FOR SIGNING
 80. SEE PLAN SET FOR SIGNING
 81. SEE PLAN SET FOR SIGNING
 82. SEE PLAN SET FOR SIGNING
 83. SEE PLAN SET FOR SIGNING
 84. SEE PLAN SET FOR SIGNING
 85. SEE PLAN SET FOR SIGNING
 86. SEE PLAN SET FOR SIGNING
 87. SEE PLAN SET FOR SIGNING
 88. SEE PLAN SET FOR SIGNING
 89. SEE PLAN SET FOR SIGNING
 90. SEE PLAN SET FOR SIGNING
 91. SEE PLAN SET FOR SIGNING
 92. SEE PLAN SET FOR SIGNING
 93. SEE PLAN SET FOR SIGNING
 94. SEE PLAN SET FOR SIGNING
 95. SEE PLAN SET FOR SIGNING
 96. SEE PLAN SET FOR SIGNING
 97. SEE PLAN SET FOR SIGNING
 98. SEE PLAN SET FOR SIGNING
 99. SEE PLAN SET FOR SIGNING
 100. SEE PLAN SET FOR SIGNING

SIGN SUMMARY

SHEET NO.	STATION	OFFSET	TYPE	LEGEND	SIZE (IN.)	AREA (S.F.)	SIGN FACES	POST SIZE	THICKNESS (.000 IN.)		REMOVE	RELOCATE	REMARKS	
									UN FRAMED	FRAMED				
					30X30	6.25	N		0.080				MOUNT ON MAST ARM (SEE SIGNAL POLE SUMMARY)	
6	N 52+69.5	26.3 RT.	W11-8		30X30	6.25	S		0.080					MOUNT ON MAST ARM (SEE SIGNAL POLE SUMMARY)
6	N 52+69.5	26.3 RT.	W11-8		30X30	6.25	E		0.080					MOUNT ON MAST ARM (SEE SIGNAL POLE SUMMARY)
6	N 53+74.5	26.0 LT.	W11-8		30X30	6.25	E		0.080					MOUNT ON MAST ARM (SEE SIGNAL POLE SUMMARY)
6	H 50+83	23.0 LT.	W11-8											
					48X24	8.00	N		0.080				MOUNT ON MAST ARM (SEE SIGNAL POLE SUMMARY)	
6	N 52+69.5	26.3 RT.	SPECIAL		48X24	8.00	S		0.080				MOUNT ON MAST ARM (SEE SIGNAL POLE SUMMARY)	
6	N 52+69.5	26.3 RT.	SPECIAL		48X24	8.00	E		0.080				MOUNT ON MAST ARM (SEE SIGNAL POLE SUMMARY)	
6	N 53+74.5	26.0 LT.	SPECIAL		48X24	8.00	E		0.080				MOUNT ON MAST ARM (SEE SIGNAL POLE SUMMARY)	
6	H 50+83	23.0 LT.	SPECIAL											
					24X36	6.00	S	2.5 X 2.5 PT	0.080					
6	N 51+39.5	29.2 RT.	R10-6		24X36	6.00	N	2.5 X 2.5 PT	0.080					
6	N 53+87.8	26.9 RT.	R10-6		24X36	6.00	E	2.5 X 2.5 PT	0.080					
6	H 51+22.8	24.5 LT.	R10-6											
6	N 50+10	29.0 RT.		STOP FOR PEDESTRIANS IN CROSSWALKS								X	EXISTING LOCATION N 51+37, 29.4 RT	
6	N 50+10	29.0 RT.		NO PARKING FOR STREET CLEANING 3 AM-6AM M.W.F.								X	EXISTING LOCATION N 51+37, 29.4 RT	

GENERAL NOTES:

- 1) MAST ARM MOUNTS PER S-20.00 USING STEEL STRAPS WHERE CALLED FOR ON MAST ARM.
- 2) EXISTING SIGNS THAT ARE TO REMAIN ARE NOT SHOWN.
- 3) RELOCATED SIGNS SHALL BE INSTALLED USING NEW AND FOUNDATIONS. EXISTING POSTS AND FOUNDATIONS SHALL BE REMOVED.
- 4) PT = PERFORATED STEEL TUBING (0.105" WALL)
- 5) FOR NEW POSTS, PLACE SIGNS PER S-05.00. USE URBAN DIMENSIONS.
- 6) ALL FOUNDATIONS SHALL BE CONCRETE.



SPECIAL

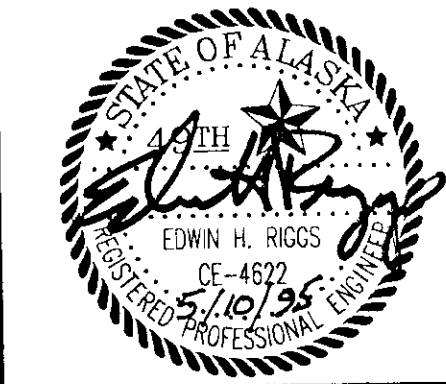
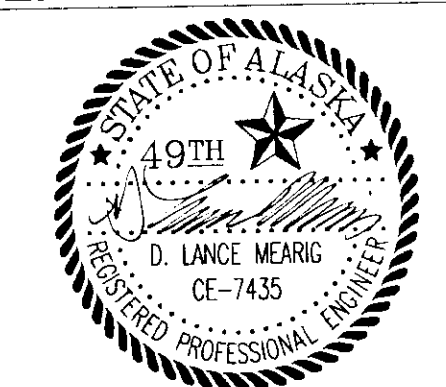
COLORS

LEGEND - BLACK
BACKGROUND - YELLOW

AS-BUILT

BY: K.V. DATE: 7/23/97

ENGINEER'S SEAL

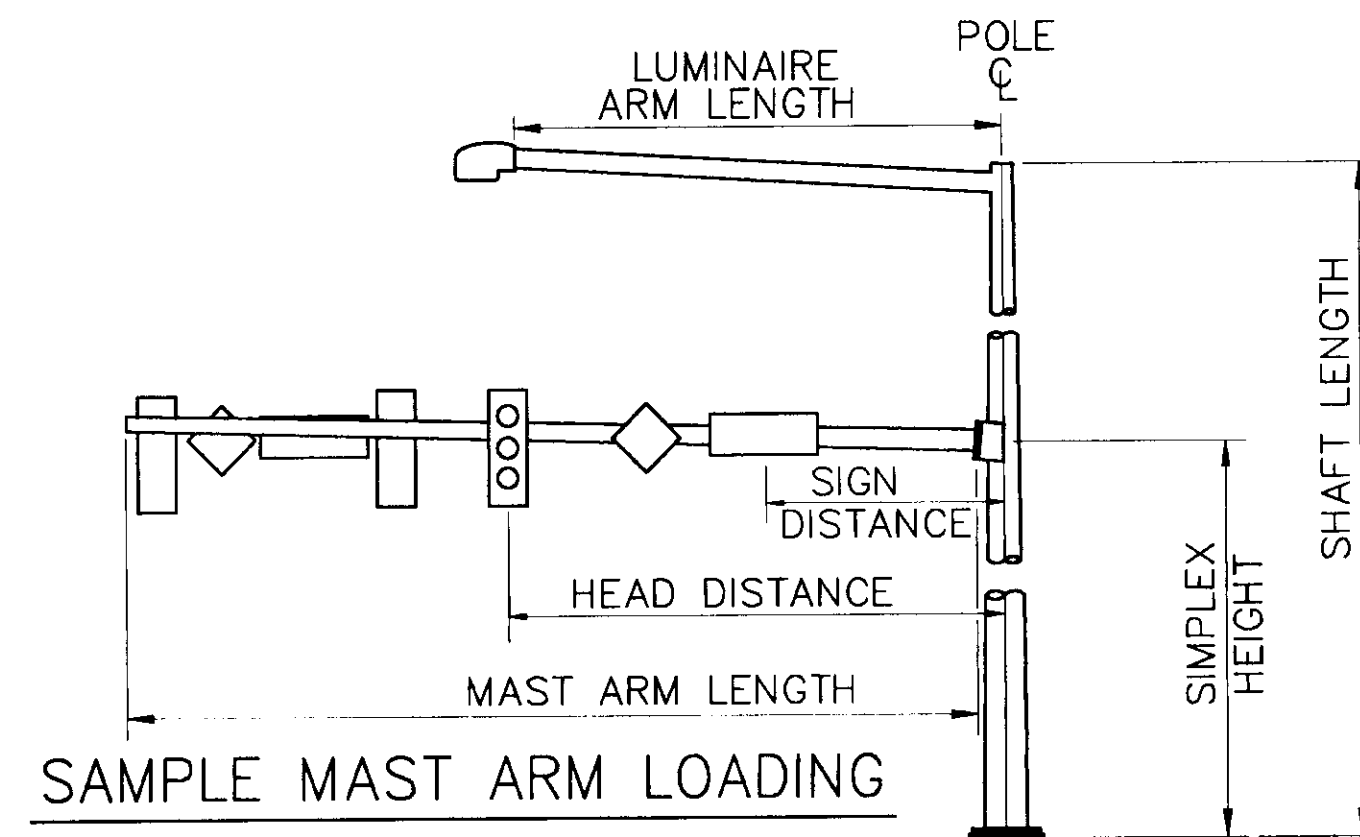


PATH: 4694S01.DWG		
BY:	DATE:	DESCRIPTION OF CHANGE:

STATE OF ALASKA
DEPARTMENT OF TRANSPORTATION
AND PUBLIC FACILITIES
SOUTHEAST REGION DESIGN & CONSTRUCTION

PSG-HAUGEN DRIVE & NORDIC DRIVE
EMERGENCY SIGNAL
SIGN SUMMARY

DESIGNED BY: DLM	PROJECT NO. STPG-0938(3)/7164-3
DRAWN BY: CMB	DATE: APRIL 1995
CHECKED BY: DLM	SHEET 3 OF 7



SAMPLE MAST ARM LOADING

SIGNAL POLE SCHEDULE													
POLE NO.	POLE CLASS	SHAFT LENGTH	SIMPLEX HEIGHT	ARM LENGTH		HEAD			SIGN				
				LUMINAIRE	SIGNAL	DIST	DIST	DIST	SIGN 1	SIGN 2	SIGN 3	SIGN 4	
1	SIGNAL	PEDESTAL	POST	-	-	-	-	-	-	-	-	-	-
2	X	28.5'	21'	6'	45'	20.5'	32.5'	44.5'	14.5'	18.5'	36.5'	41.5'	
3	X	21'	20.5'	-	14'	-	-	-	4'	9.5'	13.5'	-	
4	X	28.5'	21.5'	6'	29'	17'	-	-	9'	13'	-	-	

NOTES:

- Luminaires shall be 250 watt, medium cut-off, type 3, 240V
- Bottom of signal housings for heads 2, 3, 4 and 6 shall be 20' above pavement elevation.

REMOVAL OF EXISTING ELECTRICAL SYSTEMS		
LOCATION		REMARKS
STATION	OFFSET	
N 50+24	26.0 RT.	SALVAGE EXISTING FLASHER & SIGN
N 52+69	26.3 RT.	SALVAGE STREET ILLUMINATION POLE; REMOVE FOUNDATION
N 53+87.8	26.9 RT.	SALVAGE EXISTING FLASHER, SIGN & POST; REMOVE FOUNDATION
N 55+40	27.0 LT.	SALVAGE EXISTING FLASHER, POLE AND SIGN; REMOVE FOUNDATION

REMOVAL NOTES:

- Salvaged system components shall be delivered to the ADOT&PF maintenance yard on Mitkof Highway.
- Existing electrical systems and temporary replacements shall remain in service per Subsection 660-1.05 of the Specifications.

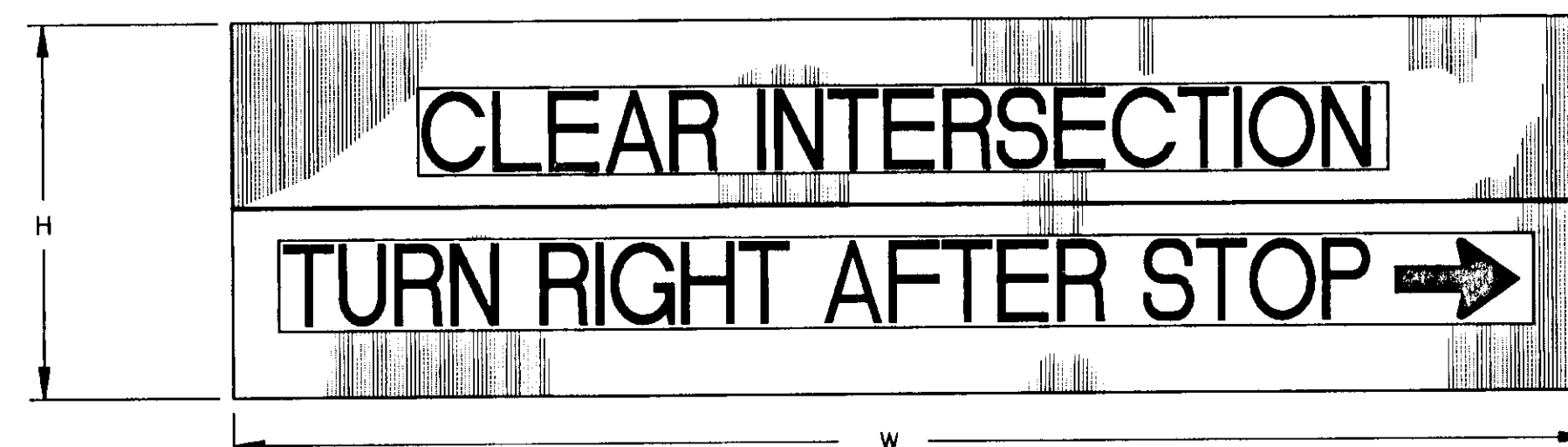
CONTROLLER PHASING												
PHASE	SIGNALS										MESSAGE BOARD	FIXED TIME
	1, 2, 3, 4, 5		6, 7		8		MESSAGE BOARD					
	12"R	12"Y	8"G	12"R	12"Y	8"Y	8"R	12"Y	OFF	ON		
N-NORMAL MODE			S			F	F			X		
1-INITIAL CLEAR		S		S			F			F		4 SECONDS
2-EMERGENCY	S			S				S		F		30 - 90 SECONDS

S = STEADY INDICATION
F = FLASHING INDICATION

SIGNAL BASE AND JUNCTION BOX SCHEDULE				
NUMBER	J.B.	LOCATION		REMARKS
		STATION	OFFSET	
1		N 51+78	31.0 RT.	STD. DWG. T-31.00 (TYPE4)
2		N 52+69	26.3 RT.	STD. DWG. T-52.10 (D=9')
3		N 53+74	26.0 LT.	STD. DWG. T-52.10 (D=8')
4		H 50+83	23.0 LT.	STD. DWG. T-52.10 (D=9')
1		N 52+66	26.3 RT.	NEW TYPE II
2		N 53+33	29.7 RT.	NEW TYPE II
3		H 50+88	22.2 RT.	NEW TYPE II
4		H 50+88	23.5 LT.	NEW TYPE II
5		N 56+60	26.3 RT.	EXISTING LOCATION NOT VERIFIED
6		N 53+71	26.0 LT.	EXISTING TYPE 1
7		N 51+60	RT.	EXISTING

NOTE:

- Offsets are to the center of the structure.

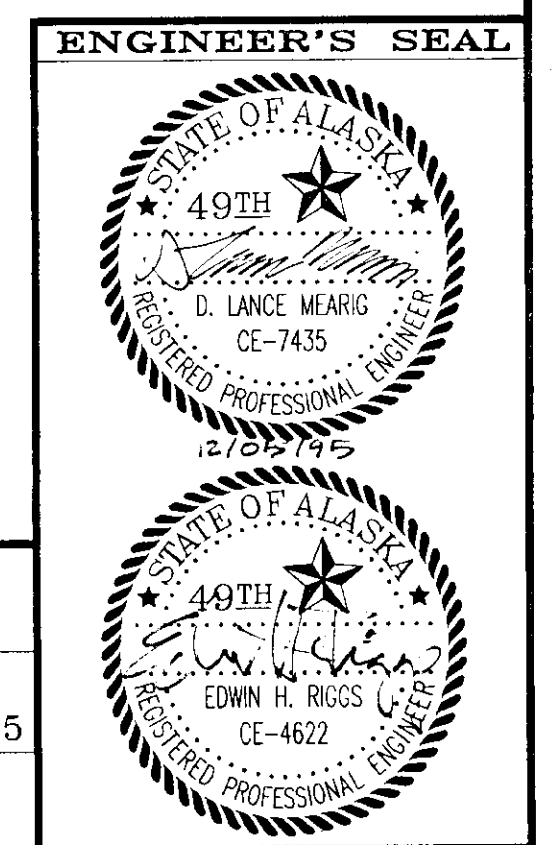


MESSAGE BOARD

NOTES:

- Mount message board to mast arm on Pole 3.
- Maximum dimensions of message board shall be: H=2.5', W=8'.
- Message legend letter height shall be 6 inches, Series C or D.

AS-BUILT
DATE: 7/23/99



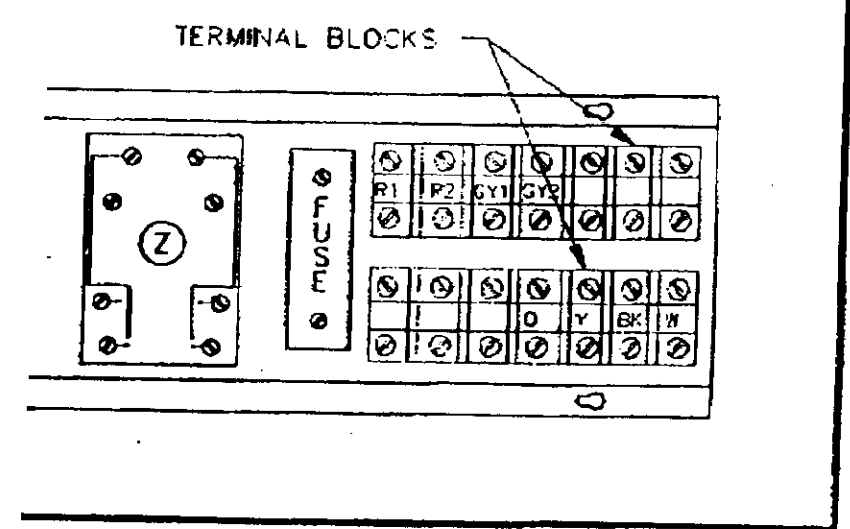
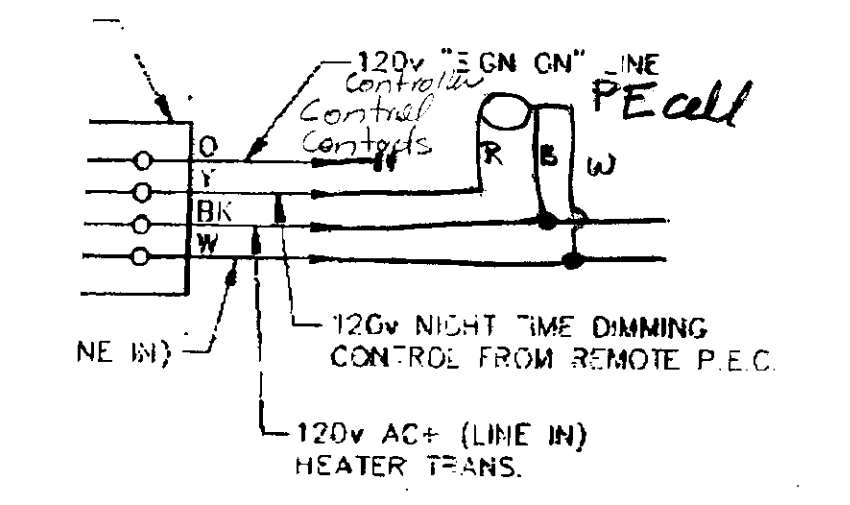
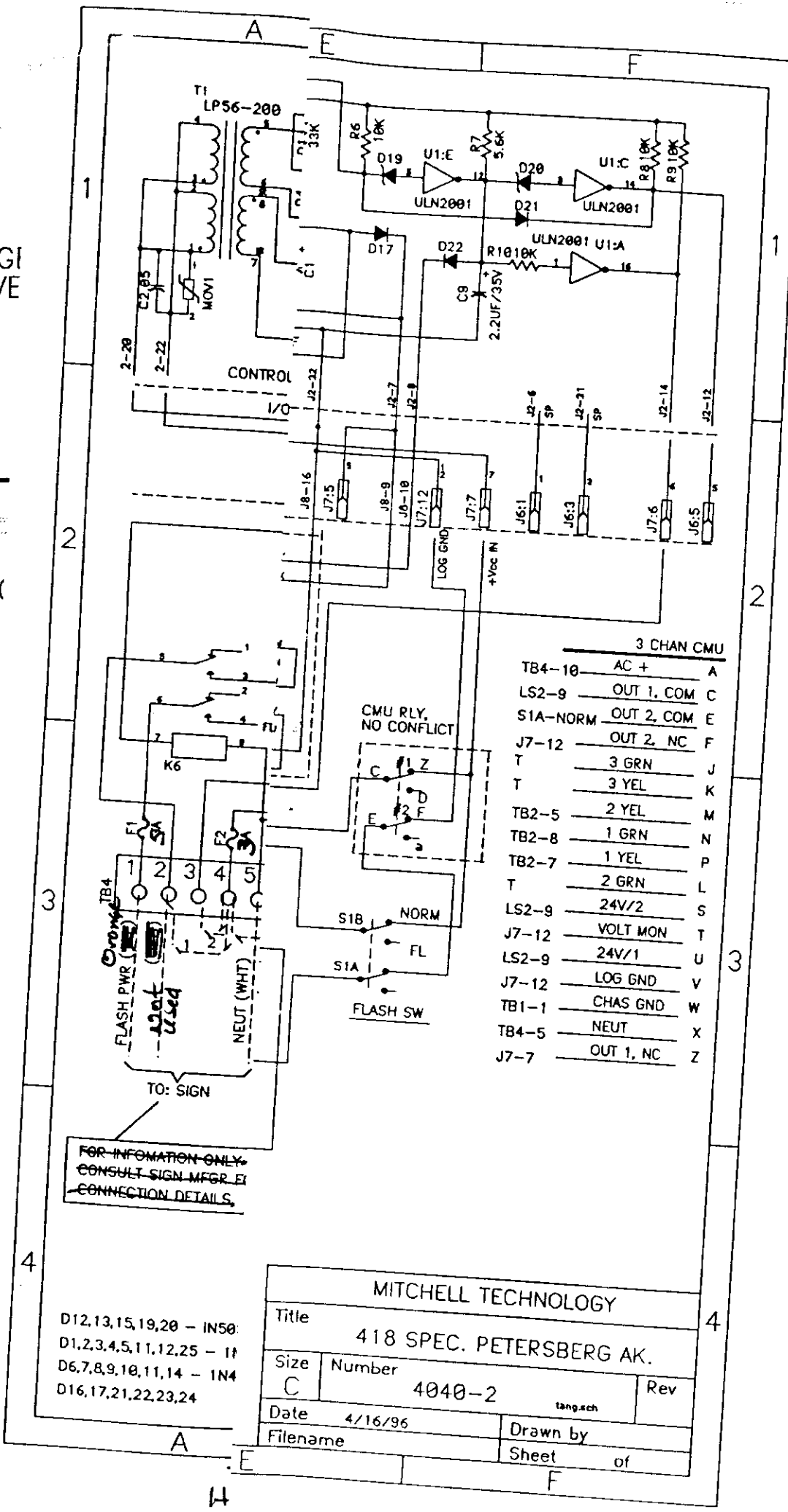
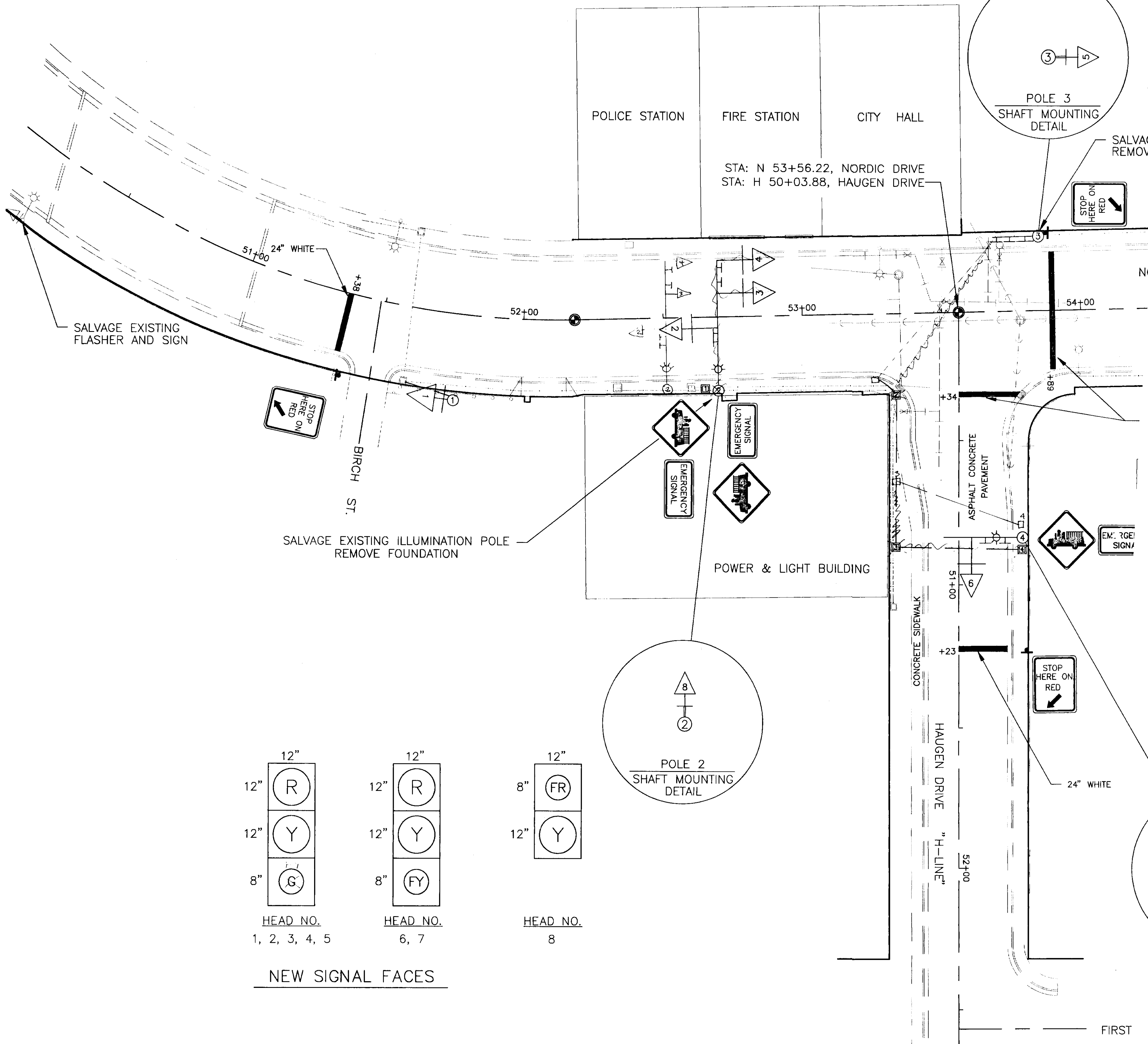
RECORD OF REVISIONS		
NO.	DATE	DESCRIPTION OF CHANGE

STATE OF ALASKA
DEPARTMENT OF TRANSPORTATION
AND PUBLIC FACILITIES
SOUTHEAST REGION DESIGN & CONSTRUCTION

PSG-HAUGEN DRIVE & NORDIC DRIVE
EMERGENCY SIGNAL
SIGNAL SUMMARY TABLES

DESIGNED BY: DLM	PROJECT NO. STPG-0938(3)/71643
DRAWN BY: CMB	DATE: DECEMBER 1995
CHECKED BY: JRK	SHEET 4 OF 7

NOTE: DO NOT SCALE FROM THESE PLANS-USE DIMENSIONS

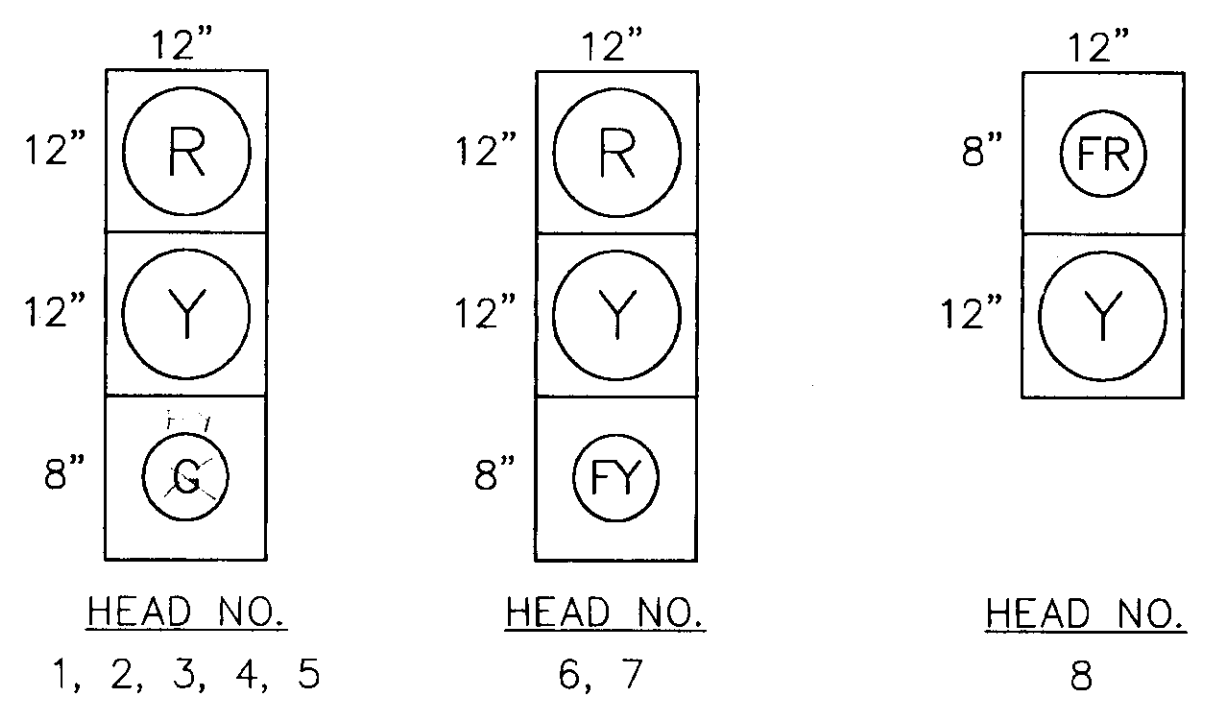


MITCHELL TECHNOLOGY			
Title	418 SPEC. PETERSBERG AK.		
Size	Number	4040-2	Rev
Date	4/16/95	Drawn by	
Filename		Sheet	of

HORIZONTAL CONTROL

HORIZONTAL CONTROL IS BASED ON THE AS-BUILT BEARING OF N 1°20'18" W BETWEEN THE CENTERLINE PT MONUMENT AT "AS-BUILT" STATION 52+17.00 AND THE CENTERLINE MONUMENT AT THE NORDIC DRIVE AND HAUGEN DRIVE INTERSECTION "AS-BUILT" STATION 53+55.01. (REFERENCE "AS-BUILT" PLANS FOR PROJECT S-0937(10), 1976)

AS-BUILT
BY: KK DATE: 7/23/99



NEW SIGNAL FACES

NOTE: DO NOT SCALE FROM THESE PLANS-USE DIMENSIONS

PATH: 4694P01.DWG		
BY:	DATE:	DESCRIPTION OF CHANGE:
RECORD OF REVISIONS		

STATE OF ALASKA
DEPARTMENT OF TRANSPORTATION
AND PUBLIC FACILITIES
SOUTHEAST REGION DESIGN & CONSTRUCTION

PSG-HAUGEN DRIVE & NORDIC DRIVE
EMERGENCY SIGNAL
SIGNAL, SIGNING, AND MARKING PLAN

DESIGNED BY: DLM	PROJECT NO. STPG-093B(3)/71643
DRAWN BY: CMB	DATE: DECEMBER 1995
CHECKED BY: JRK	SHEET 5 OF 7

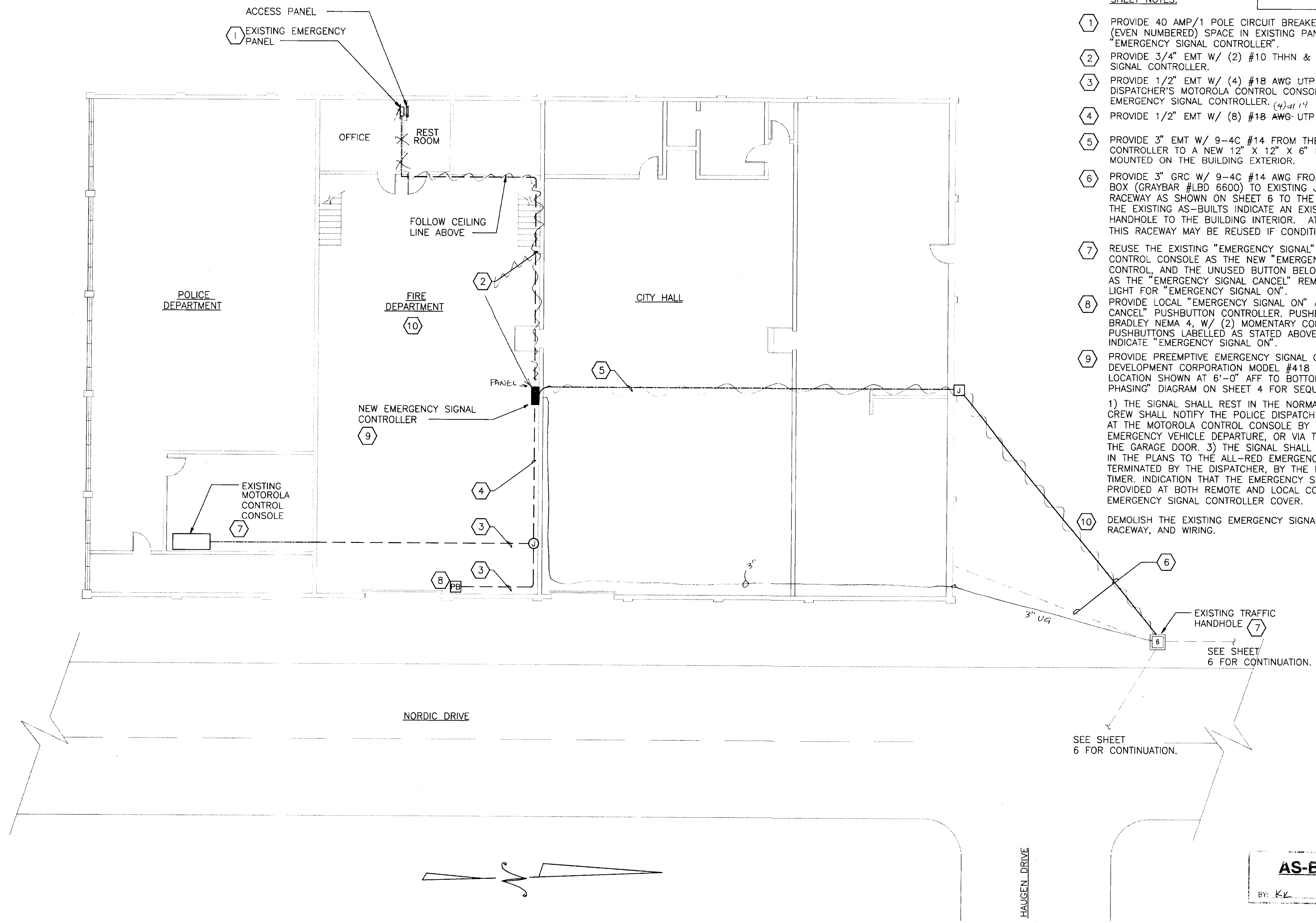


SHEET NOTES:

- 1 PROVIDE 40 AMP/1 POLE CIRCUIT BREAKER CONNECTED TO PHASE "B" (EVEN NUMBERED) SPACE IN EXISTING PANEL. LABEL AS: "EMERGENCY SIGNAL CONTROLLER".
- 2 PROVIDE 3/4" EMT W/ (2) #10 THHN & (1) #8 GND TO NEW EMERGENCY SIGNAL CONTROLLER.
- 3 PROVIDE 1/2" EMT W/ (4) #18 AWG UTP CATEGORY 5 CABLE FROM THE DISPATCHER'S MOTOROLA CONTROL CONSOLE TO THE NEW EMERGENCY SIGNAL CONTROLLER. (4)#14
- 4 PROVIDE 1/2" EMT W/ (8) #18 AWG UTP CATEGORY 5 CABLE.
- 5 PROVIDE 3" EMT W/ 9-4C #14 FROM THE EMERGENCY SIGNAL CONTROLLER TO A NEW 12" X 12" X 6" NEMA 4 RATED JUNCTION BOX MOUNTED ON THE BUILDING EXTERIOR.
- 6 PROVIDE 3" GRC W/ 9-4C #14 AWG FROM THE NEW 2" CONDULET OUTLET BOX (GRAYBAR #LBD 6600) TO EXISTING JUNCTION BOX #6. CONTINUE NEW RACEWAY AS SHOWN ON SHEET 6 TO THE NEW TRAFFIC SIGNAL HEADS. THE EXISTING AS-BUILTS INDICATE AN EXISTING RACEWAY FROM THIS HANDHOLE TO THE BUILDING INTERIOR. AT THE CONTRACTOR'S OPTION THIS RACEWAY MAY BE REUSED IF CONDITION, SIZE, AND LOCATION PERMIT.
- 7 REUSE THE EXISTING "EMERGENCY SIGNAL" BUTTON IN THE MOTOROLA CONTROL CONSOLE AS THE NEW "EMERGENCY SIGNAL ON" REMOTE CONTROL, AND THE UNUSED BUTTON BELOW THE "EMERGENCY SIGNAL" BUTTON AS THE "EMERGENCY SIGNAL CANCEL" REMOTE CONTROL. PROVIDE GREEN INDICATING LIGHT FOR "EMERGENCY SIGNAL ON".
- 8 PROVIDE LOCAL "EMERGENCY SIGNAL ON" AND "EMERGENCY SIGNAL CANCEL" PUSHBUTTON CONTROLLER. PUSHBUTTON CONTROLLER TO BE ALLEN-BRADLEY NEMA 4, W/ (2) MOMENTARY CONTACT, NON-ILLUMINATED, GUARDED PUSHBUTTONS LABELLED AS STATED ABOVE. PROVIDE GREEN PILOT LIGHT TO INDICATE "EMERGENCY SIGNAL ON".
- 9 PROVIDE PREEMPTIVE EMERGENCY SIGNAL CONTROLLER, INTERSECTION DEVELOPMENT CORPORATION MODEL #418 OR EQUAL. WALL MOUNT IN LOCATION SHOWN AT 6'-0" AFF TO BOTTOM OF CABINET. SEE "CONTROLLER PHASING" DIAGRAM ON SHEET 4 FOR SEQUENCE OF OPERATION, AND AS FOLLOWS:
1) THE SIGNAL SHALL REST IN THE NORMAL MODE. 2) UPON AN EMERGENCY, THE FIRE CREW SHALL NOTIFY THE POLICE DISPATCHER BY RADIO, AND SIGNAL SHALL BE ACTIVATED AT THE MOTOROLA CONTROL CONSOLE BY THE DISPATCHER 30 SECONDS PRIOR TO EMERGENCY VEHICLE DEPARTURE, OR VIA THE LOCAL PUSHBUTTON CONTROLLER NEAR THE GARAGE DOOR. 3) THE SIGNAL SHALL PROGRESS THROUGH THE PHASES PRESCRIBED IN THE PLANS TO THE ALL-RED EMERGENCY PHASE. THE EMERGENCY PHASE MAY BE TERMINATED BY THE DISPATCHER, BY THE PUSHBUTTON CONTROLLER OR BY THE TIMER. INDICATION THAT THE EMERGENCY SIGNAL IS IN OPERATION SHALL BE PROVIDED AT BOTH REMOTE AND LOCAL CONTROLLER LOCATIONS, AND ON THE EMERGENCY SIGNAL CONTROLLER COVER.
- 10 DEMOLISH THE EXISTING EMERGENCY SIGNAL SYSTEM CONTROLLER, DEVICES, RACEWAY, AND WIRING.

SHEET LEGEND

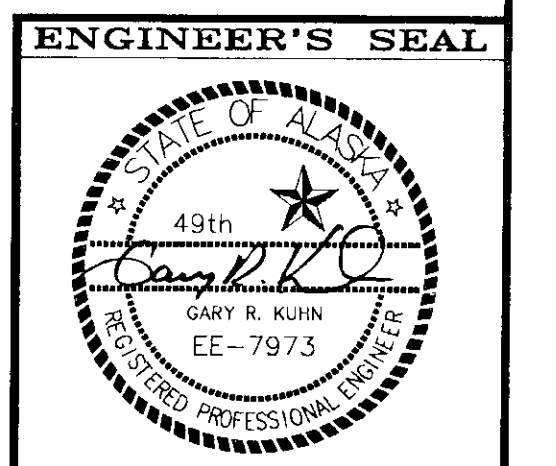
	UNDERGROUND RACEWAY
	EXPOSED RACEWAY
	CONCEALED RACEWAY
	CONTROLLER
	PANELBOARD
	PUSH BUTTON CONTROL STATION
	2" NEMA 4 RATED CONDULET OUTLET BOX.
	TRAFFIC SIGNAL/ILLUMINATION HANDOLE



SEE SHEET 6 FOR CONTINUATION.

SEE SHEET 6 FOR CONTINUATION.

AS-BUILT
BY: KY DATE: 7/23/99



NOTE: DO NOT SCALE FROM THESE PLANS-USE DIMENSIONS

PATH: 4694E90.DWG

BY:	DATE:	DESCRIPTION OF CHANGE:

RECORD OF REVISIONS

STATE OF ALASKA
DEPARTMENT OF TRANSPORTATION
AND PUBLIC FACILITIES
SOUTHEAST REGION DESIGN & CONSTRUCTION

PSG-HAUGEN DRIVE & NORDIC DRIVE
EMERGENCY SIGNAL
ELECTRICAL FLOOR PLAN

DESIGNED BY: DEJ	PROJECT NO. STPG-0938(3)/71643
DRAWN BY: PCF	DATE: APRIL 1995
CHECKED BY:	