

CITY OF PETERSBURG
P.O. Box 329
Petersburg, Alaska 99833

ADDITIVE ALTERNATES 1 & 2

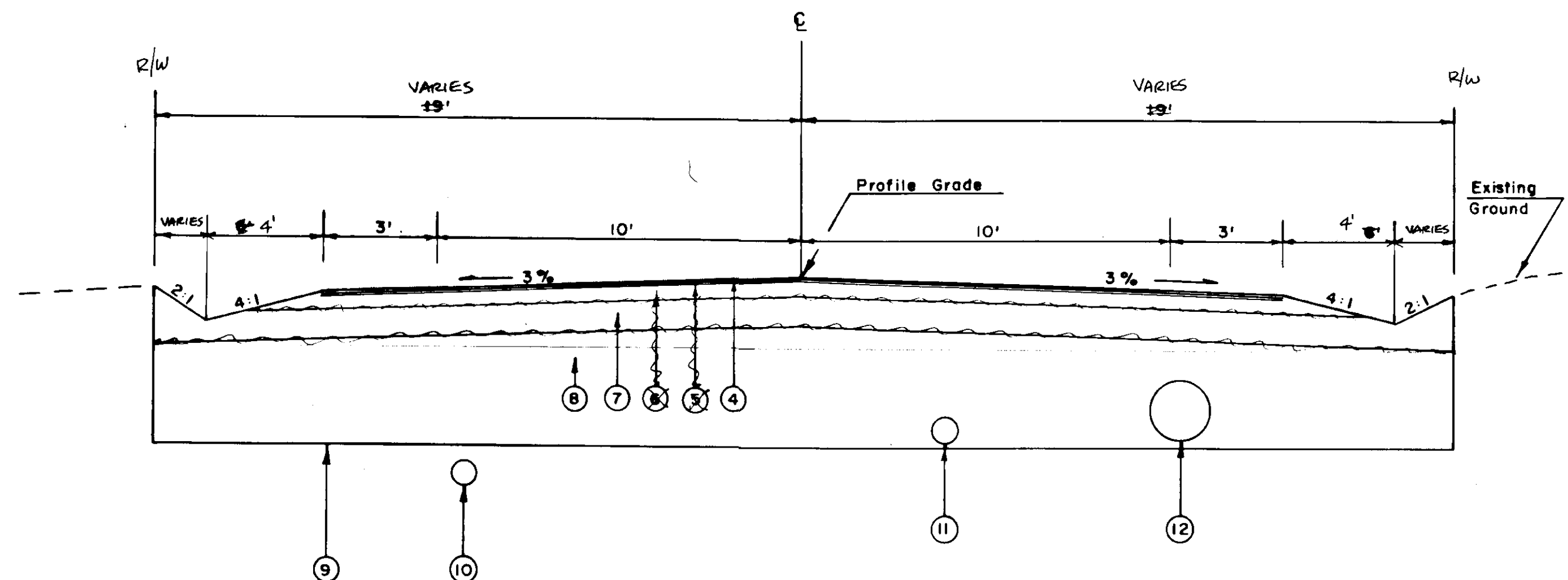
BALTIC & HARDER STREET RECONSTRUCTION

Note: All Specifications, Details, And
Typicals In The A.D.O.T.&P.F.
Wrangell Avenue Reconstruction
Project, Project No. 71394/71497
Shall Apply To This Project.

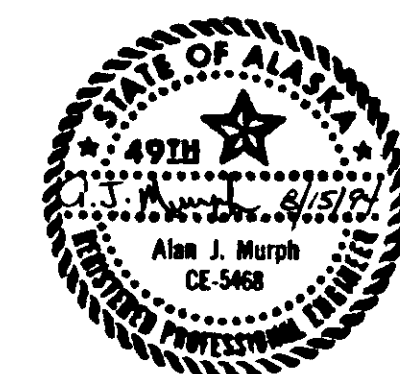
Supplemental To A.D.O.T.&P.F.
Wrangell Ave. Reconstruction
Project No. 71394/71497

INDEX OF SHEETS	
SHEET NO.	DESCRIPTION
A 1	TITLE SHEETS
A 2	ESTIMATE OF QUANTITIES BALTIC STREET
A 3	ESTIMATE OF QUANTITIES HARDER STREET
A 4	BALTIC STREET
A 5	HARDER STREET

LABELING INDEX	
4	PRIME COAT 2" IMPACT CONCRETE, 1750-18
5	BITUMINOUS SURFACE TREATMENT NOT USED
6	6" CRUSHED AGGREGATE NOT USED
7	12" SUBBASE 1/2" CRUSHED AGGREGATE BASE COURSE, C-1
8	BORROW, TYPE "A" "C"
9	LIMITS OF EXCAVATION. THE PROBE LINES SHOWN ON THE PLAN AND PROFILE SHEETS INDICATE THE APPROXIMATE DEPTH OF MATERIAL TO BE EXCAVATED. THE ENGINEER WILL DETERMINE THE LIMITS OF EXCAVATION DURING THE EXCAVATION OPERATION.
10	8" DUCTILE IRON SEWER MAIN, SEE PLANS.
11	8" DUCTILE IRON WATER MAIN, SEE PLANS.
12	STORM DRAIN SYSTEM, SEE PLANS.



HARDER STREET TYPICAL
STA 10+00 TO 13+00
(BALTIC STREET TYPICAL - PAGE 4)



Approved by:	GRADING, PAVING, DRAINAGE AND UTILITIES	No.	Date	By	Chk'd.	Appr.	Revision	Drawn by: L.A.M.	Date: 7/94	Design By: MURPH ENGINEERING P. O. Box 625 Petersburg, Alaska 99833	CITY OF PETERSBURG BALTIC & HARDER STS RECONSTRUCTION SUPPLEMENTAL TO A.D.O.T. & P.F. WRANGELL AVENUE RECONSTRUCTION PROJECT NO. 71394/71497	Sheet A 1 of A 5
									Checked by: A.J.M. & S.E.A.			7/94

GRAPHIX, INC. 238898

FINAL ESTIMATE OF QUANTITIES			
ITEM NO	ITEM	PAY UNIT	CITY OF PETERSBURG ADD. ALT. NO 1
120(1)	DBE ADJUSTMENT	C.S.	ALL REQ'D
201(3B)	CLEARING AND GRUBBING	L.S.	ALL REQ'D
202(1)	REMOVAL OF STRUCTURES & OBSTRUCTIONS	L.S.	ALL REQ'D
202(4)	REMOVAL OF CULVERT PIPE	L.F.	130 80
203(3)	UNCLASSIFIED EXCAVATION	C.Y.	311 200
203(6)	BORROW, TYPE "C"	TON	495.4
301(1)	CRUSHED AGGREGATE BASE COURSE	TON	200
304(1)	SUBBASE, GRADING "A"	TON	500
403(1)	MC-30 LIQUID ASPHALT FOR PRIME COAT	TON	0.5
405(1)	CRS-2 ASPHALT FOR SURFACE TREATMENT	TON	3
405(2B)	GRADING B, COVER COAT MATERIAL FOR ASPHALT SURFACE TREATMENT	TON	13
405(2E)	GRADING E, COVER COAT MATERIAL FOR ASPHALT SURFACE TREATMENT	TON	12
506(3)	TREATED TIMBER (RETAINING WALL)	MBM	1,536 1.6
603(24)	8 INCH PVC PIPE	L.F.	184.8 160
608(6)	RECONSTRUCTION OF WALKWAYS	S.Y.	0 10
615(1)	STANDARD SIGN	S.F.	12.59 14
618(1)	SEEDING	ACRE	0.3
619(2)	INTERIM MATTING	S.Y.	50
619(2)	FINAL MATTING	S.Y.	0 50
627(10)	ADJUSTMENT OF VALVE BOX	EACH	1
639(3)	DRIVEWAYS	EACH	3
640(1)	MOBILIZATION AND DEMOBILIZATION	L.S.	ALL REQ'D
641(1)	TEMPORARY EROSION AND POLLUTION CONTROL	C.S.	ALL REQ'D
642(1)	CONSTRUCTION SURVEYING	L.S.	ALL REQ'D
642(2)	THREE PERSON SURVEY PARTY	HOUR	0 3
643(2)	TRAFFIC MAINTENANCE	L.S.	ALL REQ'D
643(4)	CONSTRUCTION SIGN	DAY	75
643(5)	TYPE II BARRICADE	DAY	10
643(7)	TRAFFIC CONE	DAY	100
643(15)	FLAGGING	HOUR	40
643(18)	WATERING	M-GAL	2 12
643(24)	SAFETY NETTING	L.S.	ALL REQ'D.
670(1)	PAINTED TRAFFIC MARKINGS	L.S.	ALL REQ'D

CHANGE ORDER ITEMS			
ITEM NO.	ITEM	PAY UNIT	QUANTITY
301(1A)	CRUSHED AGGREGATE BASE, C1	TON	472.9
401(1A)	ASPHALT CONCRETE, TYPE II	TON	67.71
401(2A)	ASPHALT CEMENT, PBA-2	TON	3.98
618(2)	SEEDING	L.S.	ALL REQ'D

SIGN REMOVAL SUMMARY				
"O" STATION	OFFSET		LEGEND	REMARKS
	LT.	RT.		
BALTIC:				
10+36	17		Wrangell Avenue	
10+36	17		Baltic Street	
10+63	14		No Parking Sign	
11+87		16	Stop Sign	

CULVERT REMOVAL SUMMARY				
LOCATION	DIA./LENGTH	LT.	RT.	REMARKS
BALTIC:				
B 10+51	12" x 30'		X	
B 10+91	12" x 20'	X	X	
B 10+95	6" x 20'		X	
B 11+48	6" x 60'	X	X	CROSS PIPE
TOTAL	130'			

SIGN SUMMARY					
SIGN NO.	STATION	DIST. FROM C/L		LEGEND	AREA S.F.
		LT	RT		
BALTIC:					
B 1	10+63	14	16	No Parking Sign	3.00
B 2	11+87		16	Stop Sign	4.25
B 3	11+90		16	Baltic Street	1.67
B 4	11+90		16	North Nordic Drive	1.67
TOTAL					12.59

See A.D.O.T./P.F. Wrangell Avenue Reconstruction Project No. 71394/71497 Sign Summary For Details.

APPROACH & DRIVEWAY SUMMARY							
STATION AT	OFFSET		RADIUS	REMARKS	LENGTHS OF 8" PIPES		
	LT	RT			WIDTH	LT	RT
BALTIC:							
B 10+51		X	12	10	10		2 @ 16 32.2
B 10+91		X	18	10	10		2 @ 22 28.2
B 10+95	X		28	10	10		2 @ 34 32
TOTAL							184.8 L.F.

WALKWAY (SW) SUMMARY								
STATION	LT	RT	CONCRETE SW	WOODEN SW	S.Y. OF REMOVAL	S.Y. OF REPLACEMENT	INSTALLATION OF DITCH CROSSING	LENGTH OF PVC
BALTIC:								
11+48	X			X	10	10	X	2 @ 10'



Approved by:	BALTIC STREET ESTIMATE OF QUANTITIES	No.	Date	By	Chd.	Appr.	Revision	Drawn by: LAM	Date: 8/94	Design By: MURPH ENGINEERING P. O. Box 625 Petersburg, Alaska 99833	CITY OF PETERSBURG BALTIC & HARDER STS RECONSTRUCTION SUPPLEMENTAL TO A.D.O.T. & P.F. WRANGELL AVENUE RECONSTRUCTION PROJECT NO. 71394/71497	Sheet 42
		AS SHOWN										

FINAL ESTIMATE OF QUANTITIES			
ITEM NO	ITEM	PAY UNIT	CITY OF PETERSBURG ADD. AL.T.NO.2
120(1)	DBE ADJUSTMENT	C.S.	ALL REQ'D
201(3B)	CLEARING AND GRUBBING	L.S.	ALL REQ'D
202(1)	REMOVAL OF STRUCTURES & OBSTRUCTIONS	L.S.	ALL REQ'D
202(4)	REMOVAL OF CULVERT PIPE	L.F.	20 0
203(3)	UNCLASSIFIED EXCAVATION	C.Y.	1,500 713
203(6)	BORROW, TYPE C	TON	2,000 676.3
203(11)	DRAINAGE BLOCKS	TON	160
301(1)	CRUSHED AGGREGATE BASE COURSE	TON	200
304(1)	SUBBASE, GRADING "A"	TON	500
403(1)	MC 30 LIQUID ASPHALT FOR PRIME COAT	TON	0.5
405(1)	CRS 2 ASPHALT FOR SURFACE TREATMENT	TON	3
405(2B)	GRADING B, COVER COAT MATERIAL FOR ASPHALT SURFACE TREATMENT	TON	13
405(2E)	GRADING E, COVER COAT MATERIAL FOR ASPHALT SURFACE TREATMENT	TON	7
603(24)	8 INCH PVC PIPE	L.F.	40 54
604(2)	SANITARY SEWER MANHOLE	EACH	1 0
604(3)	RECONSTRUCT EXISTING MANHOLE	EACH	1
604(5A)	INLET TYPE "A"	EACH	1 0
608(6)	RECONSTRUCTION OF WALKWAYS	S.Y.	20
615(1)	STANDARD SIGN	S.F.	14 12.59
618(1)	SEEDING	ACRE	0.3
619(2)	INTERIM MATTING	S.Y.	50
619(2)	FINAL MATTING	S.Y.	50 0
626(1-6)	6 INCH SEWER CONDUIT (D.I., CLASS 50)	L.F.	200 71.5
626(1-8)	8 INCH SEWER CONDUIT (D.I., CLASS 50)	L.F.	210 212
626(3)	SERVICE TEE (8"X8"X6")	EACH	2
627(1-8)	8 INCH DUCTILE IRON WATER CONDUIT CLASS 52	L.F.	225
627(8)	WATER SERVICE CONNECTION	EACH	2 3
627(10)	ADJUSTMENT OF VALVE BOX	EACH	1
635(1)	INSULATION BAORD	MBM	0.5 0.96
640(1)	MOBILIZATION AND DEMOBILIZATION	L.S.	ALL REQ'D
641(1)	TEMPORARY EROSION AND POLLUTION CONTROL	C.S.	ALL REQ'D
642(1)	CONSTRUCTION SURVEYING	L.S.	ALL REQ'D
642(2)	THREE PERSON SURVEY PARTY	HOUR	3 0
643(2)	TRAFFIC MAINTENANCE	L.S.	ALL REQ'D
643(4)	CONSTRUCTION SIGN	DAY	125
643(5)	TYPE II BARRICADE	DAY	15
643(7)	TRAFFIC CONE	DAY	150
643(15)	FLAGGING	HOUR	60
643(18)	WATERING	M-GAL	13 2
643(24)	SAFETY NETTING	L.S.	ALL REQ'D
670(1)	PAINTED TRAFFIC MARKINGS	L.S.	ALL REQ'D

CHANGE ORDER ITEMS			
ITEM NO.	ITEM	PAY UNIT	QUANTITY
301(A)	CRUSHED AGG. BASE, C-1	TON	358.8
401(A)	ASPHALT CONCRETE, TYPE II	TON	90.79
401(B)	ASPHALT CEMENT, PBA-2	TON	5.69
618(A)	SEEDING	L.S.	ALL REQ'D

CULVERT REMOVAL SUMMARY				
LOCATION	DIA./LENGTH	LT.	RT.	REMARKS
HARDER:				
11+33	12"		X	

SIGN REMOVAL SUMMARY				
"O" STATION	OFFSET LT.	RT.	LEGEND	REMARKS
HARDER:				
11+25	21		No Parking Sign	
12+03 1/2		23	Stop Sign	

SIGN SUMMARY					
SIGN NO.	STATION	DIST. FROM C/L		LEGEND	AREA S.F.
		LT	RT		
HARDER:					
H 1	11+25	21		No Parking Sign ON PAVEMENT	3.00
H 2	12+03 1/2		23	Stop Sign BAR	6.25
H 3	12+06		23	Harder Street	1.67
H 4	12+06		23	North Nordic Drive	1.67
See A.D.O.T./P.F. Wrangell Avenue Reconstruction Project No. 71394/71497 Sign Summary For Details.					TOTAL 12.69

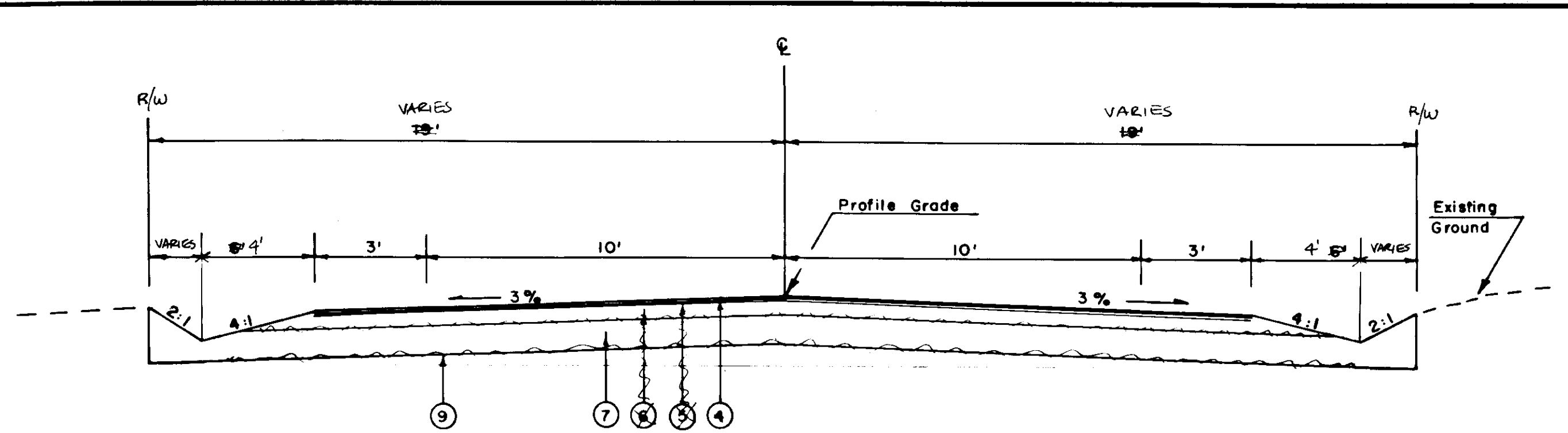
8 INCH UNPERFORATED POLYETHYLENE PIPE SUMMARY		
STATION	L.F.	REMARKS
HARDER:		
11+55 RT	5'	Tee 8" X 24" X 24" into P-12

WALKWAY (SW) SUMMARY								
STATION	LT	RT	CONCRETE SW	WOODEN SW	S.Y. OF REMOVAL	S.Y. OF REPLACEMENT	INSTALLATION OF DITCH CROSSING	LENGTH OF PVC
HARDER:								
11+03		X		X	10	10	X	2 @ 10' 1/2
11+33		X		X	10	10	X	2 @ 10' 1/2
TOTAL					20	20		54'



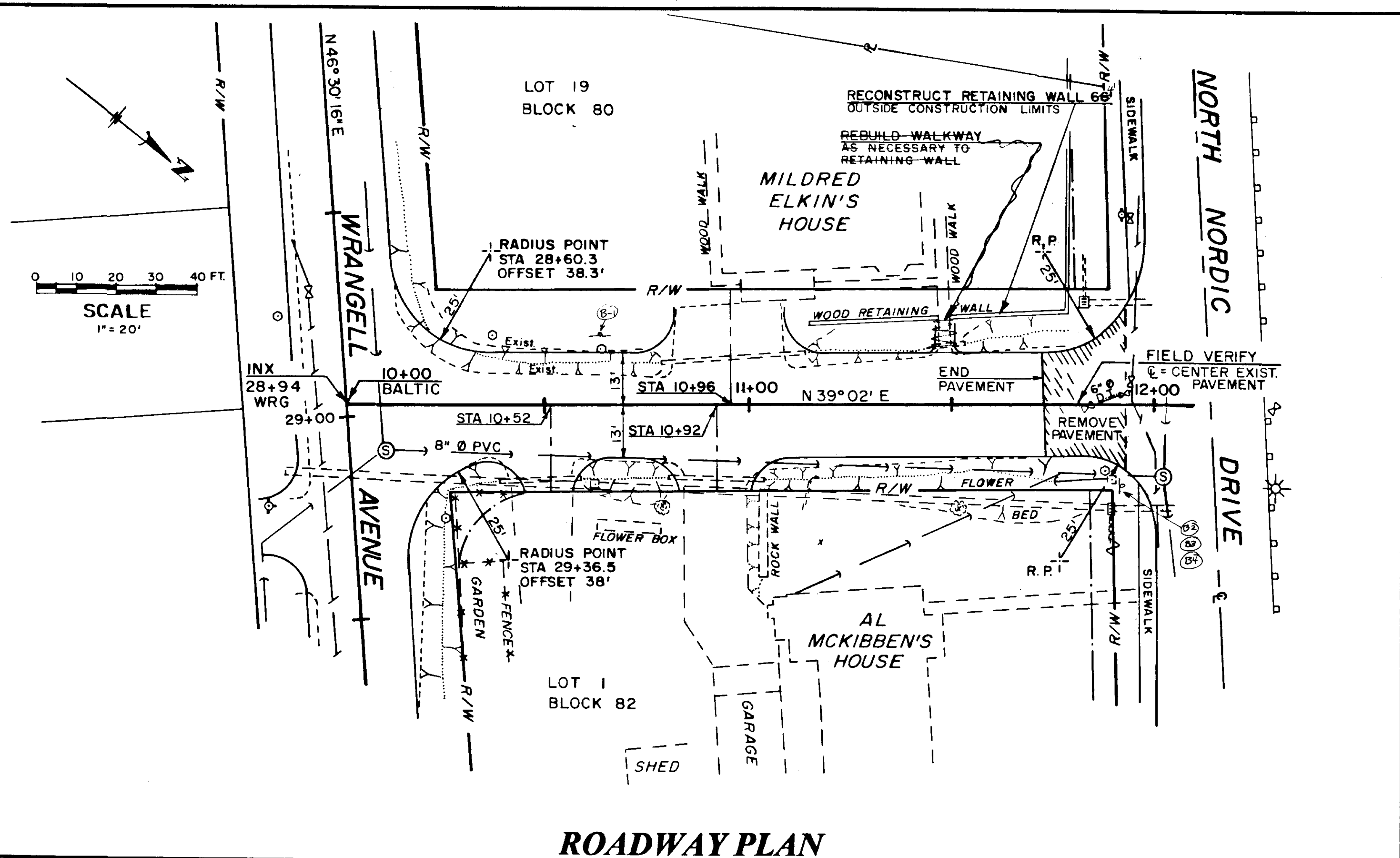
Approved by:	HARDER STREET ESTIMATE OF QUANTITIES	No.	Date	By	Chk'd.	Appr.	Revision	Drawn by: LAM	Date: 8/94	Design By: MURPH ENGINEERING P. O. Box 625 Petersburg, Alaska 99833	CITY OF PETERSBURG BALTIC & HARDER STS RECONSTRUCTION SUPPLEMENTAL TO A.D.O.T. & P.F. WRANGELL AVENUE RECONSTRUCTION PROJECT NO. 71394/71497	Sheet	A3
								Checked by: AJM	Date: 8/94			of	A5
								Approved by:				Scale	AS SHOWN

GRAPHIX INC. 238895



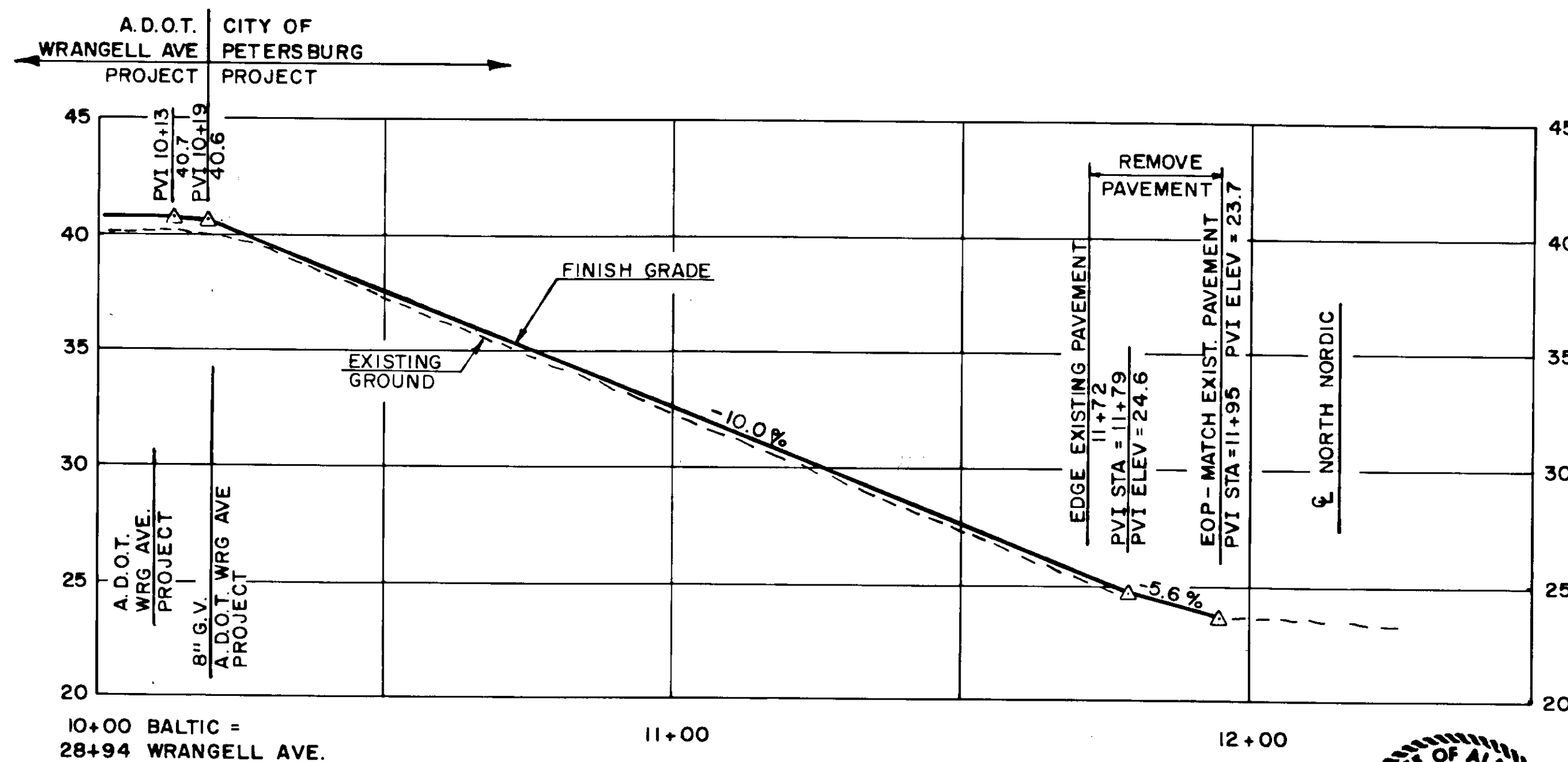
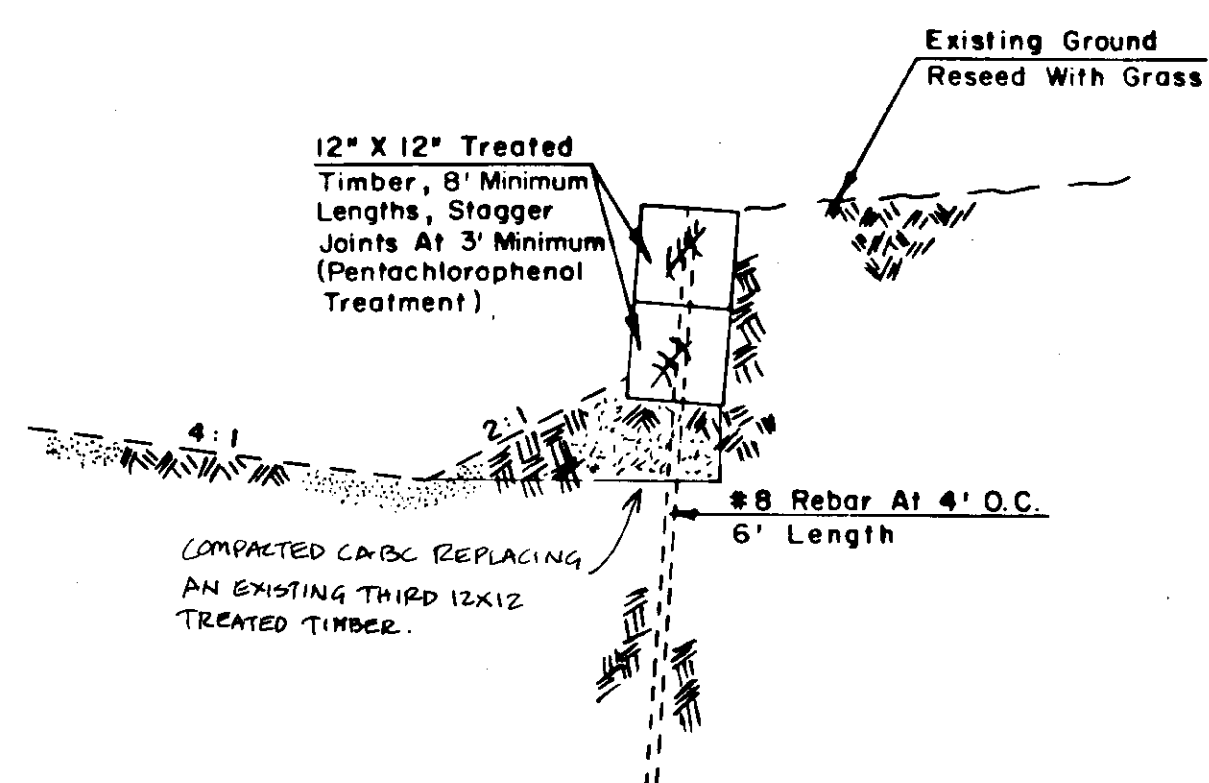
LABELING INDEX	
4	PRIME COAT 2" NORMAL CONCRETE, TYPE II
5	BITUMINOUS SURFACE TREATMENT - NOT USED
6	6" CRUSHED AGGREGATE - NOT USED
7	12" SUBBASE 1 1/2" CRUSHED AGGREGATE BASE COURSE, C-1
8	BORROW, TYPE "A"
9	LIMITS OF EXCAVATION. THE ENGINEER WILL DETERMINE THE LIMITS OF EXCAVATION DURING THE EXCAVATION OPERATION.

BALTIC STREET TYPICAL
STA 10+00 TO 13+00

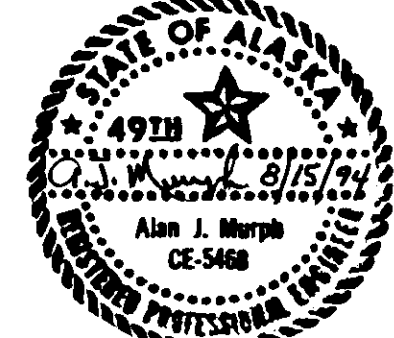


ROADWAY PLAN

RETAINING WALL ON BALTIC



ROADWAY PROFILE



Approved by:	<h1>BALTIC STREET</h1>	Revision				Draws by: LAM Date: 8/94	Design By: MURPH ENGINEERING P. O. Box 625 Petersburg, Alaska 99833	CITY OF PETERSBURG BALTIC & HARDER STS RECONSTRUCTION SUPPLEMENTAL TO A.D.O.T. & P.F. WRANGELL AVENUE RECONSTRUCTION PROJECT NO. 71394/71497	Sheet A4
		No.	Date	By	Ckd	Appr.			Scale AS SHOWN

