

# State of Alaska

Department of Transportation  
and Public Facilities

Southeast Region

As-builts

THE FOLLOWING STANDARD DRAWINGS APPLY TO THIS PROJECT:

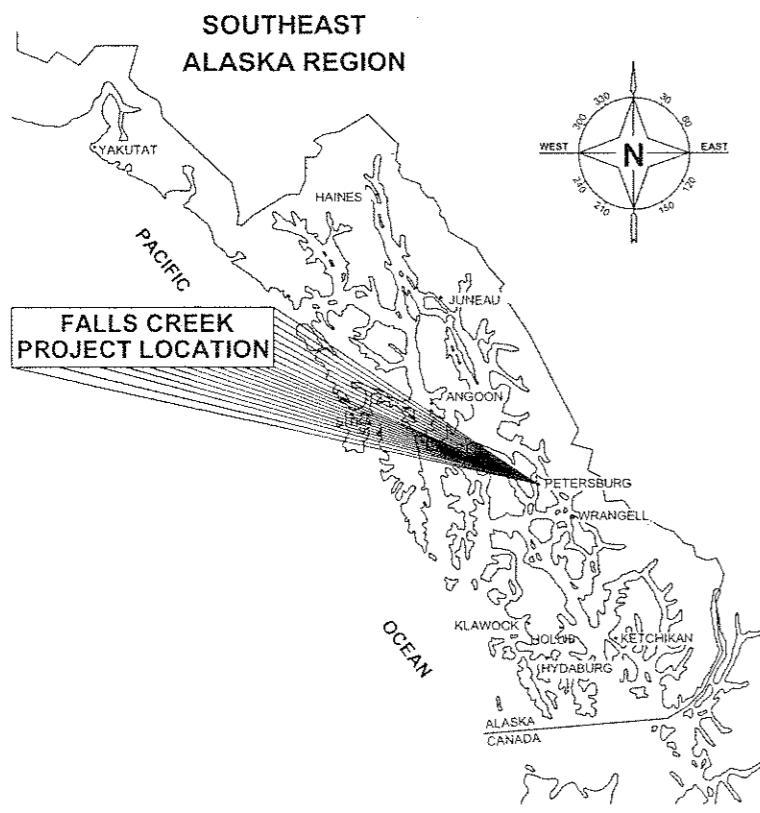
E-13.00

Project As-Built Drawings have been reviewed by the Project Engineer and represent to the best of my knowledge, the project as constructed.

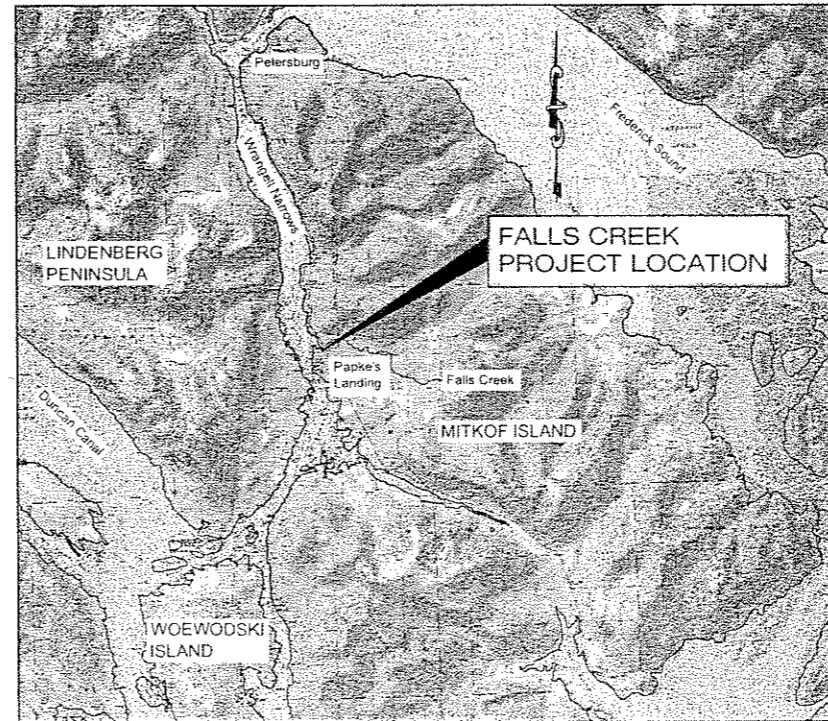
PE Kraig Norheim Date 12-15-09

# PETERSBURG, ALASKA PSG AIRPORT MITIGATION FALLS CREEK FISH LADDER REPAIRS

AIP 3-02-0219-1108 & PROJECT No. 68399 68843



REGIONAL LOCATION MAP



VICINITY MAP  
GRAPHIC SCALE = 1 MILE

INDEX	
SHEET NO.	DESCRIPTION
1	TITLE SHEET
2	ESTIMATE OF QUANTITIES & SUMMARIES
3	PROJECT AREA
4	PROJECT SITE PLAN / REPAIR WORK SUMMARY
5	GRATING ACCESS HATCH DETAILS
6	SLUICE GATE DETAILS
7	DEBRIS DEFLECTION RACK DETAILS
8	GRATING RECONSTRUCTION DETAILS
9	GABION DETAILS
10	MISCELLANEOUS DETAILS
11	EROSION AND SEDIMENT CONTROL PLAN

CONTRACTOR: KEYSTONE Assoc. Inc.

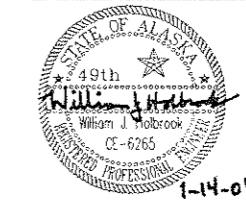
Begin: MAY 27, 2009

End: AUGUST 13, 2009

Project Engineer: Kraig Norheim

PATH: O:\Psg\68399\PlanSet\Title Sheet.dwg  
Thu, 08/Jun/09 11:37AM bgwilson

STATE OF ALASKA  
DEPARTMENT OF TRANSPORTATION  
& PUBLIC FACILITIES  
Southeast Region



APPROVED: Victor M. Winters 1-14-09  
VICTOR M. WINTERS, P.E.  
REGIONAL RECONSTRUCTION ENGINEER

APPROVED: Gary L. Davis 1-15-09  
GARY L. DAVIS  
DIRECTOR, SOUTHEAST REGION

CERTIFIED TRUE & CORRECT AS-BUILT OF ACTUAL FIELD CONDITION:

CONSTRUCTION PROJECT MANAGER \_\_\_\_\_ DATE \_\_\_\_\_

STATE	PROJECT DESIGNATION	YEAR	SHEET NO.	TOTAL SHEETS
ALASKA	3-02-0219-1108 ~ 68399	2008	1	11

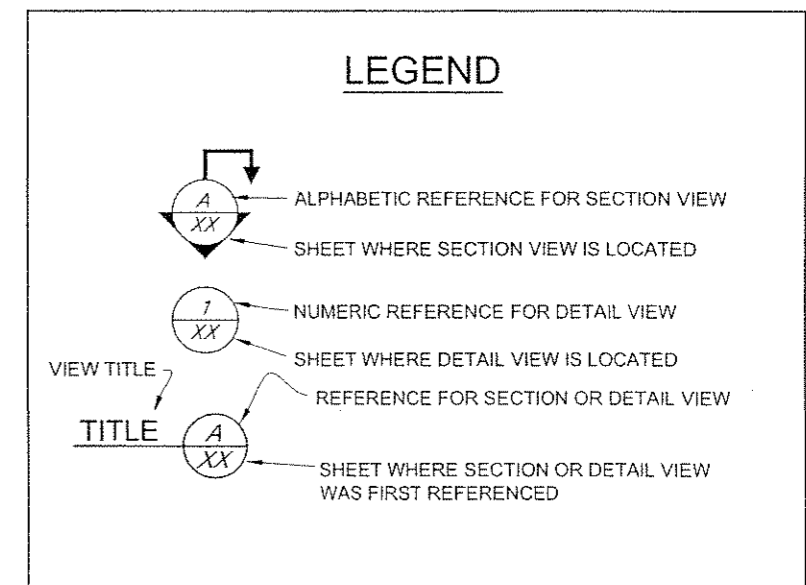
ESTIMATE OF QUANTITIES				
ITEM NUMBER	ITEM DESCRIPTION	PAY UNIT	QUANTITY	QUANTITIES ESTIMATE
202(1)	REMOVAL OF STRUCTURES AND OBSTRUCTIONS	LUMP SUM	ALL REQ'D	2.0 TONS
202(13)	REMOVAL OF ROCKS / ORGANIC DEBRIS	LUMP SUM	ALL REQ'D	55 CY DEBRIS
501(1)	CLASS A CONCRETE	LUMP SUM	ALL REQ'D	3.6 CY CONCRETE
504(3)	RECONSTRUCT GRATING SYSTEM	LUMP SUM	ALL REQ'D	1,000 LBS STEEL
504(4)	GRATING ACCESS HATCH	LUMP SUM	ALL REQ'D	200 LBS STEEL / EACH
504(5)	DEBRIS DEFLECTION RACK	LUMP SUM	ALL REQ'D	1200 LBS STEEL / EACH
<del>636(2)</del>	GABION- <i>DELETED BY: CO-91</i>	<del>LUMP SUM</del>	<del>ALL REQ'D</del>	<del>6.0 CY ROCK</del>
640(1)	MOBILIZATION AND DEMOBILIZATION	LUMP SUM	ALL REQ'D	
640(4)	WORKER MEALS AND LODGING, OR PER DIEM	LUMP SUM	ALL REQ'D	
641(1)	EROSION AND POLLUTION CONTROL ADMINISTRATION	LUMP SUM	ALL REQ'D	
641(2)	TEMPORARY EROSION AND POLLUTION CONTROL	CONTINGENT SUM	ALL REQ'D	
650(1)	SLUICE GATE	LUMP SUM	ALL REQ'D	1,100 LBS STEEL / EACH
<i>680(1)</i>	<i>FISH LADDER &amp; ACCESS MODS CO-91</i>	<i>LUMP SUM</i>	<i>ALL REQ'D</i>	

501(1) CLASS A CONCRETE	
LOCATION	ESTIMATED CY
SLUICE GATE HEADWALL (2 LOCATIONS)	2.7
HOLE IN WALL NEAR OUTFALL (LOCATION #1)	0.3
HOLE IN ROCK-CONCRETE WALL (LOCATION #8)	0.6
TOTAL =	3.6

<del>636(2) GABION</del>	
<del>LOCATION</del>	<del>ESTIMATED CY</del>
<del>UPPER SLUICE GATE</del>	<del>6.0</del>
<del>TOTAL =</del>	<del>6.0</del>

202(1) REMOVAL OF STRUCTURES AND OBSTRUCTIONS	
LOCATION	DESCRIPTION
LOWER FISH LADDER	REMOVE 56 SFT WOOD DECKING
GRATING ADJACENT TO UPPER SLUICE GATE	REMOVE 52 SFT GRATING AND CREOSOTE SUPPORT SYSTEM (SEE SECTION 641)
PROPOSED ACCESS HATCH LOCATIONS	REMOVE EXISTING GRATING AND SUPPORT AS NECESSARY TO INSTALL ACCESS HATCHES
UPPER SLUICE GATE AREA	REMOVE AND DISPOSE OF EXISTING DEBRIS DEFLECTION RACK.
UPPER SLUICE GATE AREA	REMOVE AND DISPOSE OF EXISTING GABION REMNANTS
UPPER SLUICE GATE	REMOVE EXISTING SLUICE GATE, WOODEN WALL, AND ALL SUPPORT STRUCTURE.
LOWER SLUICE GATE	REMOVE EXISTING SLUICE GATE, WOODEN WALL, AND ALL SUPPORT STRUCTURE.

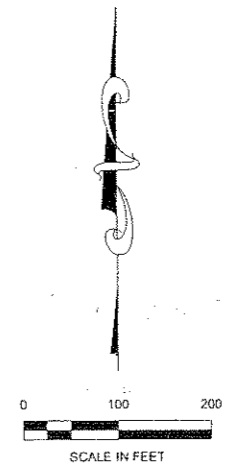
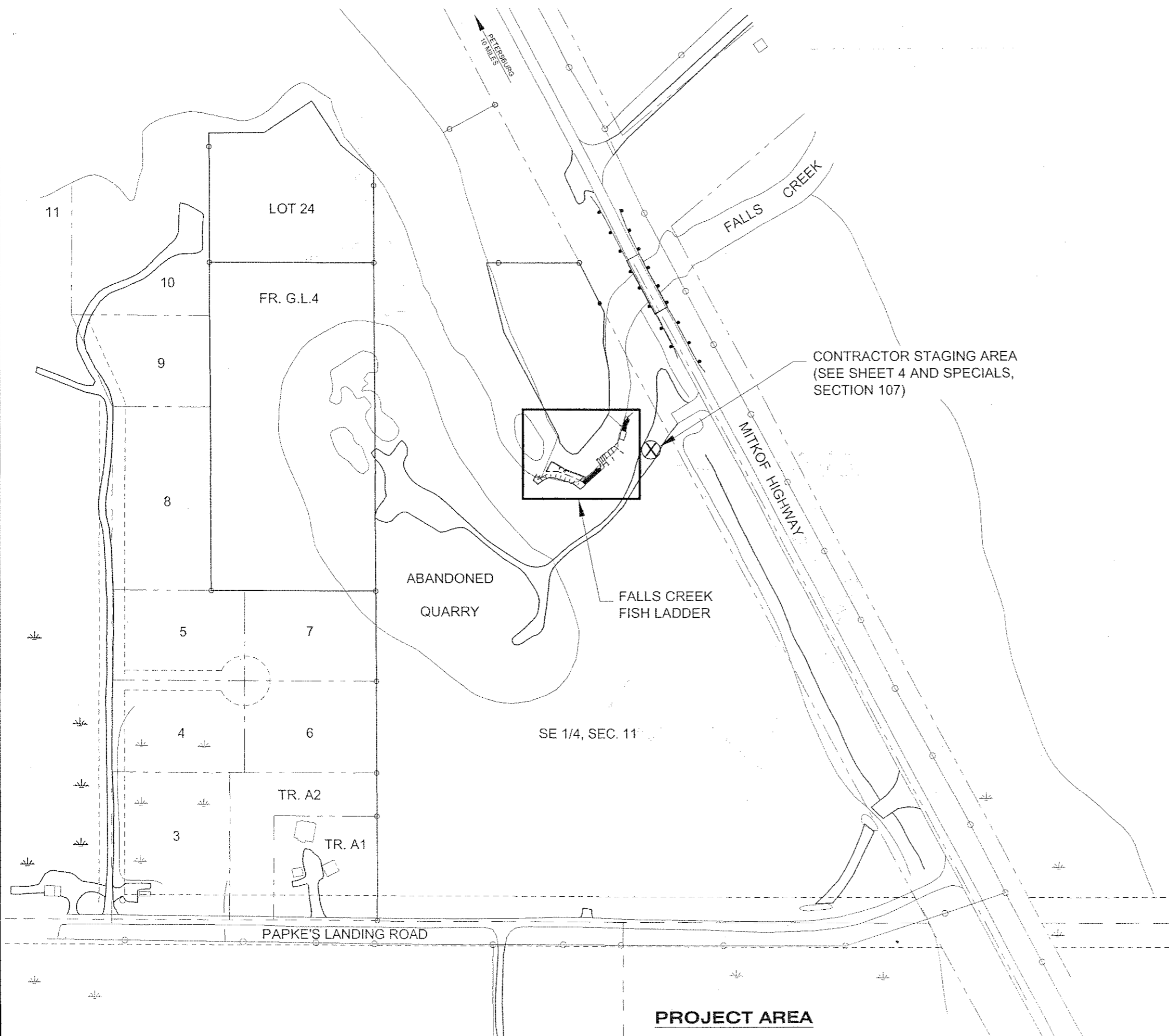
203(13) REMOVAL OF ROCKS / ORGANIC DEBRIS	
LOCATION	DESCRIPTION
GRATING ADJACENT TO LOWER SLUICE GATE.	REMOVE 52 SFT GRATING, REMOVE DEBRIS / REINSTALL GRATING, SEE SPECIALS SECTION 202
FISH LADDER BETWEEN OUTFALL TO OCEAN AND SCOUR HOLE #8.	REMOVE ALL ACCUMULATED DEBRIS FROM FISH LADDER.
FISH LADDER BETWEEN SCOUR HOLE #8 AND UPPER SLUICE GATE.	REMOVE ALL ACCUMULATED DEBRIS FROM FISH LADDER & 5' TOWARDS CENTER STREAM.
FISH LADDER BETWEEN OUTFALL TO OCEAN AND LOWER SLUICE GATE.	CUT BACK OVERHANGING VEGETATION/REMOVE TREES 5' TOWARDS HILL SIDE.
FISH LADDER BETWEEN LOWER SLUICE GATE AND UPPER SLUICE GATE.	CUT BACK OVERHANGING VEGETATION FOR 5' TOWARDS HILLSIDE. REMOVE TREES AS FOLLOWS: 1. ADJACENT TO THE VIEWING PLATFORM: 6 LARGE (LG) ALDERS 10-12" 2. AT THE POINT WHERE THE TRAIL ALONG THE FISH LADDER MAKES A CORNER (COLLAPSED SAFETY RAILINGS): VERY DENSE WITH TREES - REMOVE 3 LG ALDER (10-12"), 1 SPRUCE 10", AND 8-10 SM SPRUCE <6" 3. BETWEEN 3RD AND 4TH CONCRETE CROSS-TIE: REMOVE 2 LG ALDERS (10"), 1-2 SM SPRUCE <6" 4. BETWEEN 4TH AND 5TH CONCRETE CROSS-TIE: REMOVE 1 LG ALDER (12-14"), 2 SM SPRUCE <6" 5. BETWEEN 5TH CONCRETE CROSS-TIE AND LOWER END UPPER CONCRETE FISH PASS VAULT: REMOVE 3 LG ALDER (12-16") WITH SIGNIFICANT OVERHANGING WEIGHT 6. UPPER PASS TRASH RACK/ENTRANCE AREA: 1 LARGE DOUBLE TRUNK ALDER (12-16"), AND 1 LARGE DOWNED LOG REMAINS (THAT STRUCK JACK SCREW SEVERAL YEARS BACK).



Project As-Built Drawings have been reviewed by the Project Engineer and represent to the best of my knowledge, the project as constructed.  
PE *Kraig J. Holbrook* Date *12-15-09*

DO NOT SCALE FROM THESE DRAWINGS USE DIMENSIONS

	STATE OF ALASKA DEPARTMENT OF TRANSPORTATION & PUBLIC FACILITIES SOUTHEAST REGION										
	PSG AIRPORT MITIGATION FALLS CREEK FISH LADDER REPAIRS										
<b>ESTIMATE OF QUANTITIES &amp; SUMMARIES</b>											
DESIGNED BY: C. TRIPP	PROJECT DESIGNATION: AIP 3-02-0219-1108 - 68399	YEAR: 2008									
DRAWN BY: STAFF	SHEET NO: 2	TOTAL SHEETS: 11									
PATH: Q:\PSG\68399\PLANSET\ESTIMATE OF QUANTITIES.DWG											
TAB: 2											
<table border="1" style="width: 100%;"> <thead> <tr> <th colspan="3">REVISIONS</th> </tr> <tr> <th>NO.</th> <th>DATE</th> <th>DESCRIPTION</th> </tr> </thead> <tbody> <tr> <td> </td> <td> </td> <td> </td> </tr> </tbody> </table>			REVISIONS			NO.	DATE	DESCRIPTION			
REVISIONS											
NO.	DATE	DESCRIPTION									



Project As-Built Drawings have been reviewed by the Project Engineer and represent to the best of my knowledge, the project as constructed.

PE *Kraig Holbrook* Date 12-15-09

DO NOT SCALE FROM THESE DRAWINGS USE DIMENSIONS

CHECKED BY: W. HOLBROOK 		STATE OF ALASKA DEPARTMENT OF TRANSPORTATION & PUBLIC FACILITIES SOUTHEAST REGION <b>PSG AIRPORT MITIGATION          FALLS CREEK FISH LADDER          REPAIRS</b>										
DESIGNED BY: C. TRIPP DRAWN BY: STAFF		<b>PROJECT AREA</b>										
PATH: G:\PSG\68399\PLANSET\LOCATION MAP.DWG TAB: 3		PROJECT DESIGNATION AIP 3-02-0219-1108 ~ 68399	YEAR 2008									
<table border="1"> <thead> <tr> <th colspan="3">REVISIONS</th> </tr> <tr> <th>NO.</th> <th>DATE</th> <th>DESCRIPTION</th> </tr> </thead> <tbody> <tr> <td> </td> <td> </td> <td> </td> </tr> </tbody> </table>		REVISIONS			NO.	DATE	DESCRIPTION				SHEET NO. 3	TOTAL SHEETS 11
REVISIONS												
NO.	DATE	DESCRIPTION										

**PROJECT AREA**

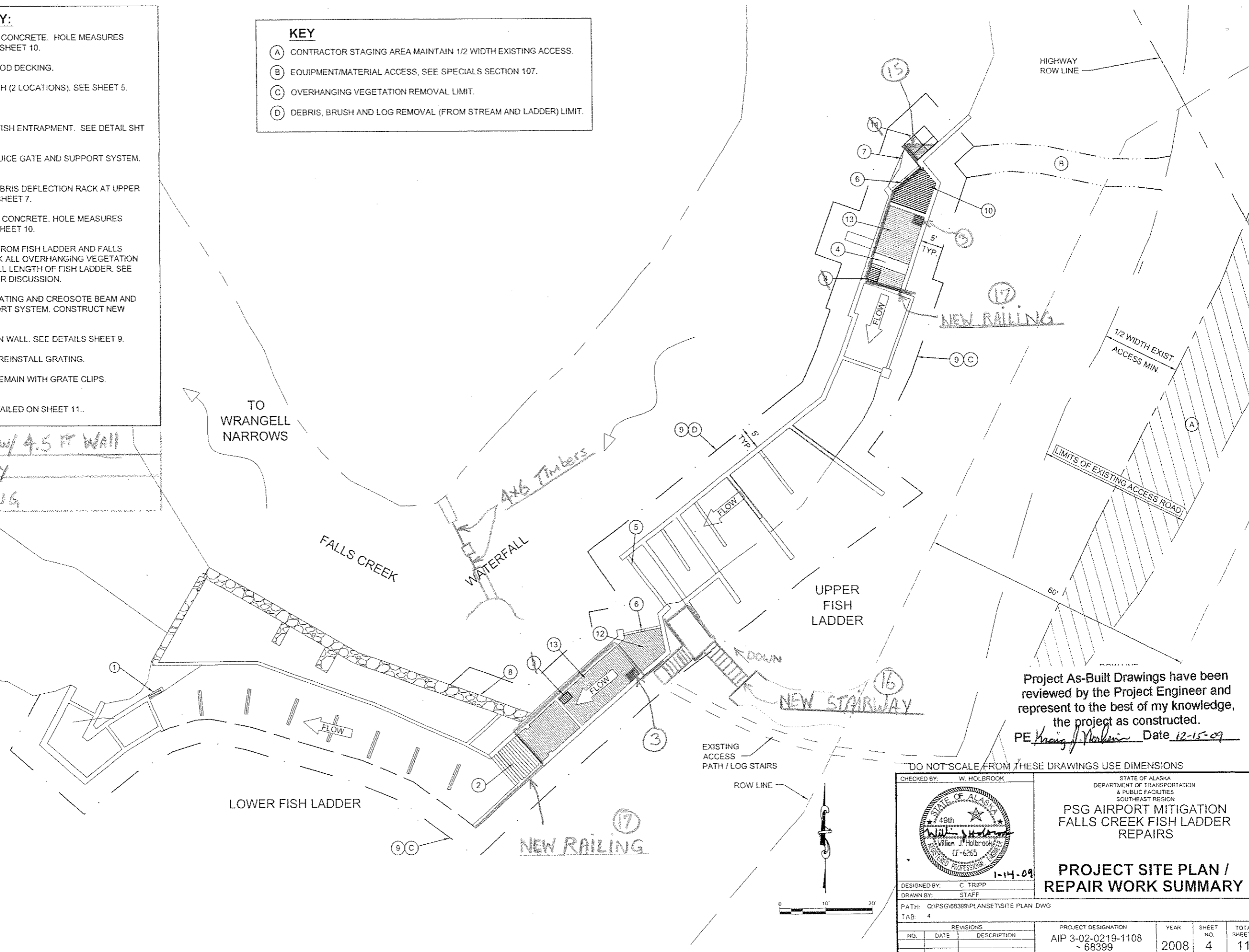
**REPAIR WORK SUMMARY:**

- ① REPAIR HOLE IN WALL WITH CLASS A CONCRETE. HOLE MEASURES APPROXIMATELY 4'X1.5'. SEE DETAIL SHEET 10.
- ② REMOVE AND DISPOSE EXISTING WOOD DECKING.
- ③ CONSTRUCT GRATING ACCESS HATCH (2 LOCATIONS). SEE SHEET 5.
- ④ RETRIEVE MISSING GRATING PANEL.
- ⑤ REMOVE ROCK KNOB TO PREVENT FISH ENTRAPMENT. SEE DETAIL SHT 10.
- ⑥ REMOVE AND REPLACE EXISTING SLUICE GATE AND SUPPORT SYSTEM. (2 LOCATIONS) SEE SHEET 6.
- ⑦ REMOVE AND REPLACE EXISTING DEBRIS DEFLECTION RACK AT UPPER SLUICE GATE LOCATION ONLY. SEE SHEET 7.
- ⑧ REPAIR HOLE IN WALL WITH CLASS A CONCRETE. HOLE MEASURES APPROXIMATELY 5'X3'. SEE DETAIL SHEET 10.
- ⑨ REMOVE AND DISPOSE ALL DEBRIS FROM FISH LADDER AND FALLS CREEK, INCLUDING LOGS. CUT BACK ALL OVERHANGING VEGETATION AND DESIGNATED TREES ALONG FULL LENGTH OF FISH LADDER. SEE SPECIALS SECTION 202 FOR FURTHER DISCUSSION.
- ⑩ REMOVE AND DISPOSE EXISTING GRATING AND CREOSOTE BEAM AND MISCELLANEOUS HARDWARE SUPPORT SYSTEM. CONSTRUCT NEW GRATING SYSTEM. SEE SHEET 8.
- ⑭ REMOVE/REPLACE DAMAGED GABION WALL. SEE DETAILS SHEET 9.
- ⑫ REMOVE GRATING/REMOVE DEBRIS/REINSTALL GRATING.
- ⑬ SECURE ALL EXISTING PANELS TO REMAIN WITH GRATE CLIPS. SEE DETAIL SHEET 5
- ⑭ IMPLEMENT ESCP FEATURES AS DETAILED ON SHEET 11..

- ⑮ Concrete Footing w/ 4.5 FT WALL
- ⑯ NEW STAIR WAY
- ⑰ NEW HANDRAILING

**KEY**

- Ⓐ CONTRACTOR STAGING AREA MAINTAIN 1/2 WIDTH EXISTING ACCESS.
- Ⓑ EQUIPMENT/MATERIAL ACCESS, SEE SPECIALS SECTION 107.
- Ⓒ OVERHANGING VEGETATION REMOVAL LIMIT.
- Ⓓ DEBRIS, BRUSH AND LOG REMOVAL (FROM STREAM AND LADDER) LIMIT.



Project As-Built Drawings have been reviewed by the Project Engineer and represent to the best of my knowledge, the project as constructed.  
 PE *W. Holbrook* Date *12-15-09*

DO NOT SCALE FROM THESE DRAWINGS USE DIMENSIONS

CHECKED BY: W. HOLBROOK



STATE OF ALASKA  
 DEPARTMENT OF TRANSPORTATION  
 & PUBLIC FACILITIES  
 SOUTHEAST REGION

PSG AIRPORT MITIGATION  
 FALLS CREEK FISH LADDER  
 REPAIRS

**PROJECT SITE PLAN /  
 REPAIR WORK SUMMARY**

DESIGNED BY: C. TRIPP

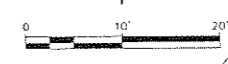
DRAWN BY: STAFF

PATH: Q:\PSG\68399\PLAN\SET\SITE PLAN.DWG

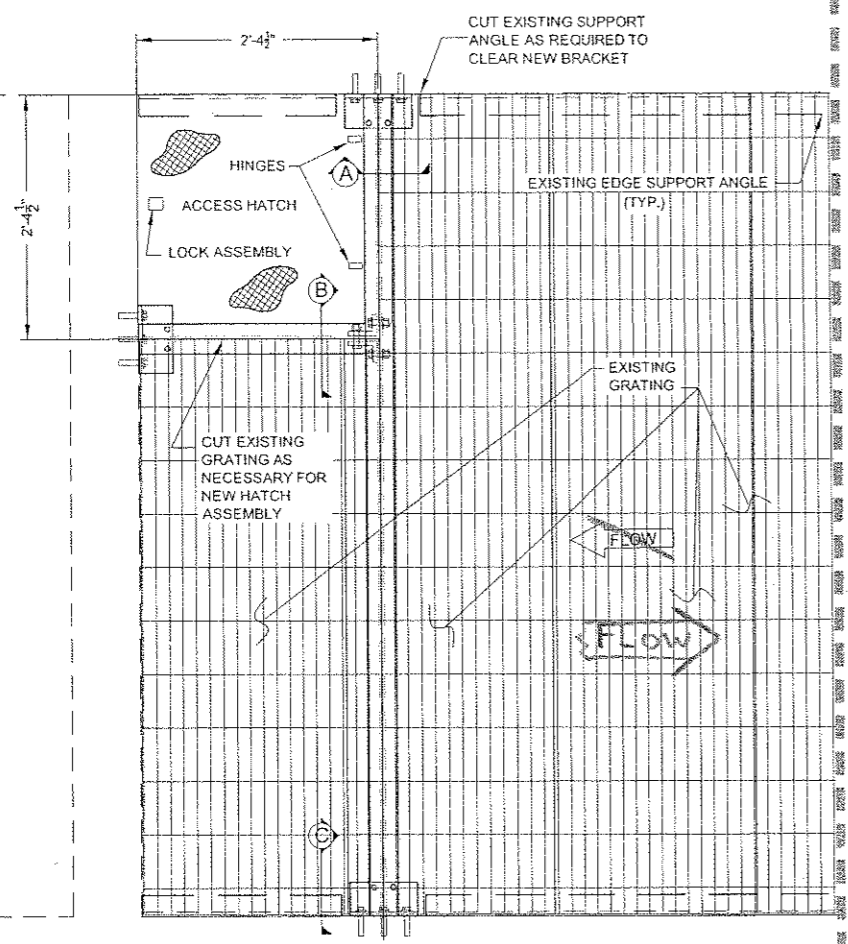
TAB: 4

REVISIONS		
NO.	DATE	DESCRIPTION

PROJECT DESIGNATION	YEAR	SHEET NO.	TOTAL SHEETS
AIP 3-02-0219-1108 ~ 68399	2008	4	11

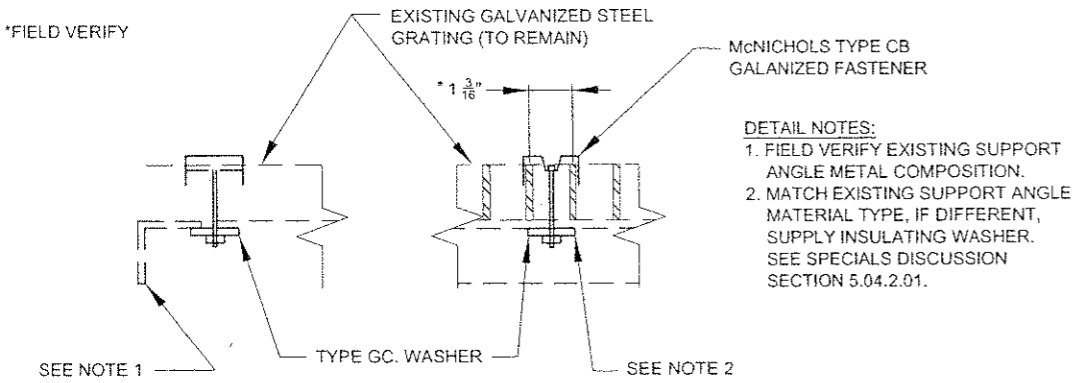


MOVED TO UP STREAM LOCATION



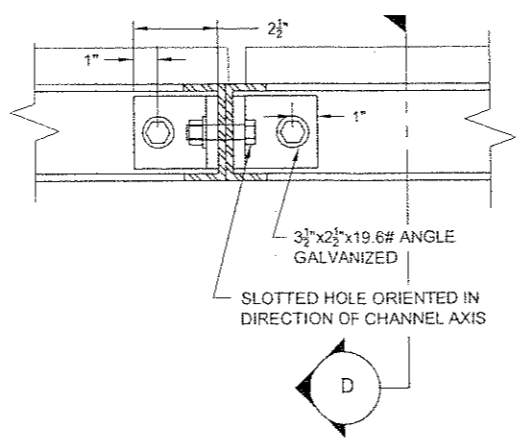
NOTE:  
GRATING ACCESS HATCH SHALL BE HINGED AND LOCKABLE. PROVIDE SUBMITTAL.

**GRATING ACCESS HATCH PLAN**

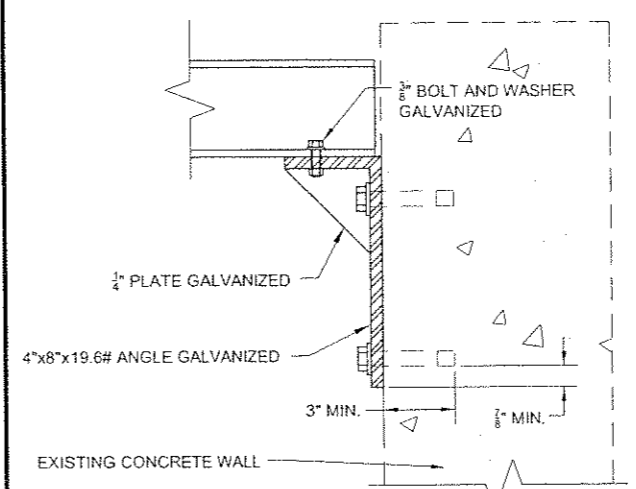


DETAIL NOTES:  
1. FIELD VERIFY EXISTING SUPPORT ANGLE METAL COMPOSITION.  
2. MATCH EXISTING SUPPORT ANGLE MATERIAL TYPE, IF DIFFERENT, SUPPLY INSULATING WASHER. SEE SPECIALS DISCUSSION SECTION 5.04.2.01.

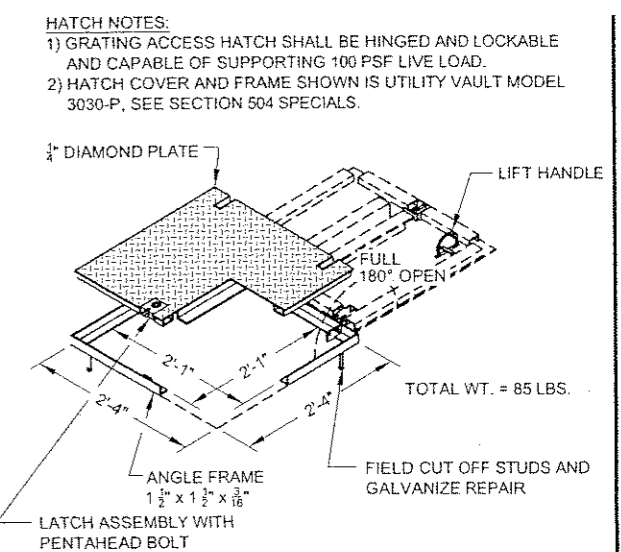
**GRATING FASTENER DETAIL G**



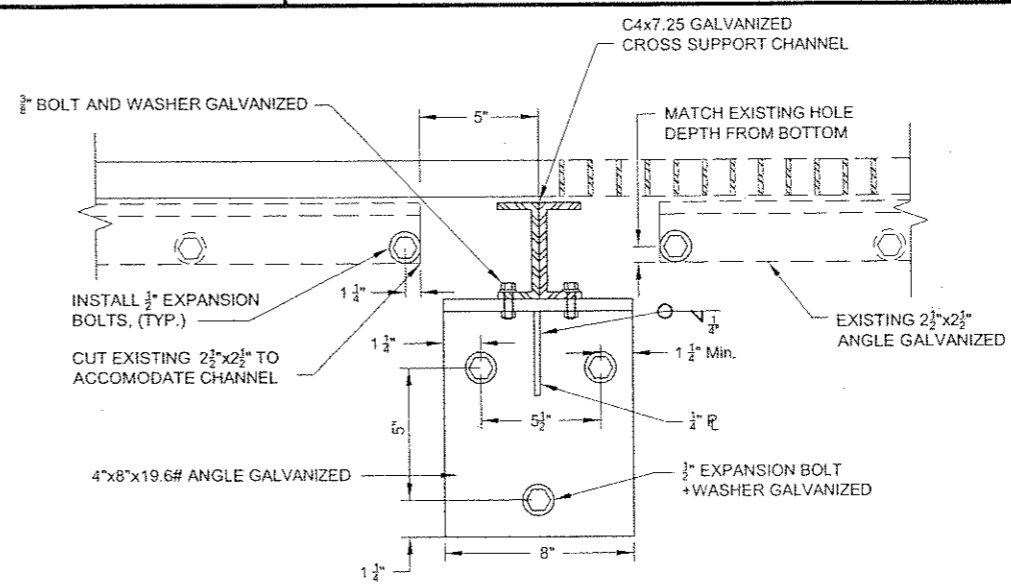
**B**  
5 SECTION



**C**  
5 SECTION

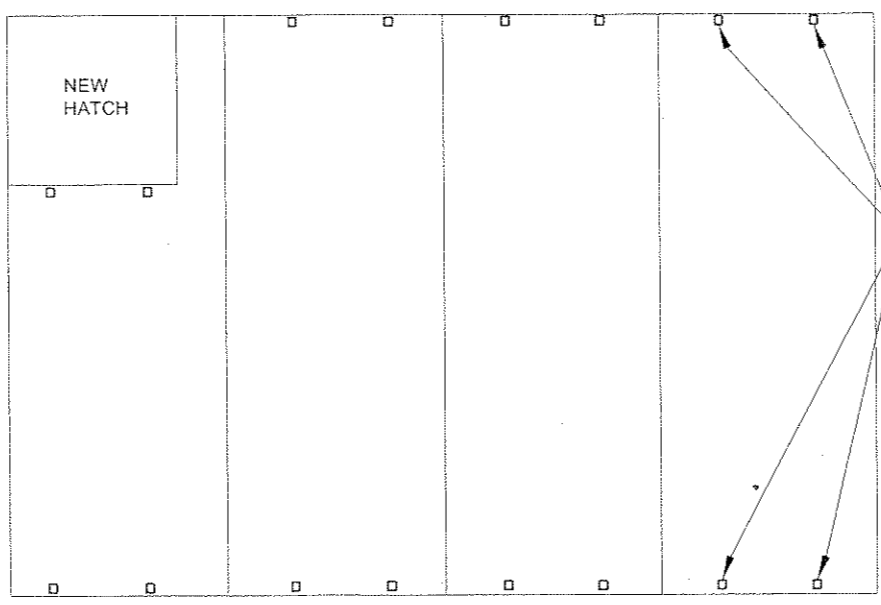


**ACCESS HATCH ASSEMBLY**

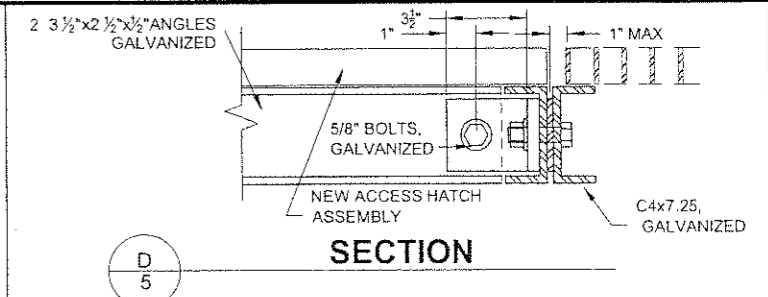


**A**  
5 SECTION  
NOTE: SUPPORT OTHER END OF C4X7.25 CROSS SUPPORT IN THE SAME WAY

Project As-Built Drawings have been reviewed by the Project Engineer and represent to the best of my knowledge, the project as constructed.  
PE *W. J. Holbrook* Date 12-15-09



**FASTENER LAYOUT LOCATIONS**



**D**  
5 SECTION

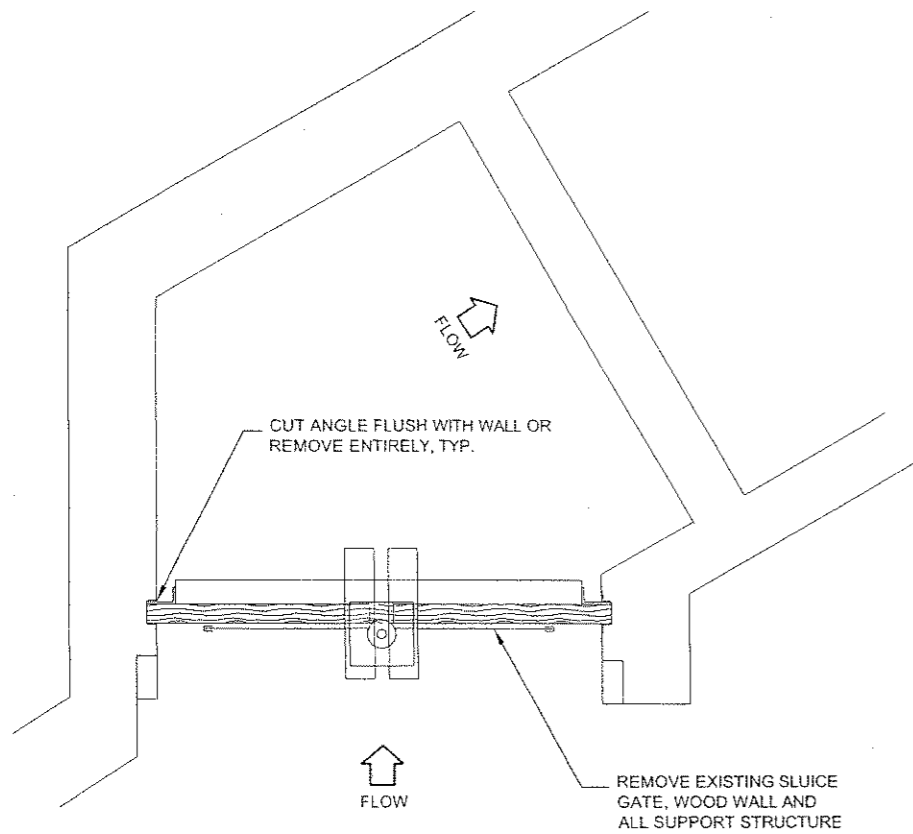
DO NOT SCALE FROM THESE DRAWINGS USE DIMENSIONS

CHECKED BY: W. HOLBROOK  
DESIGNED BY: C. TRIPP  
DRAWN BY: STAFF  
PATH: Q:\PSG\68399\PLANS\DETAILS.DWG  
TAB: 5

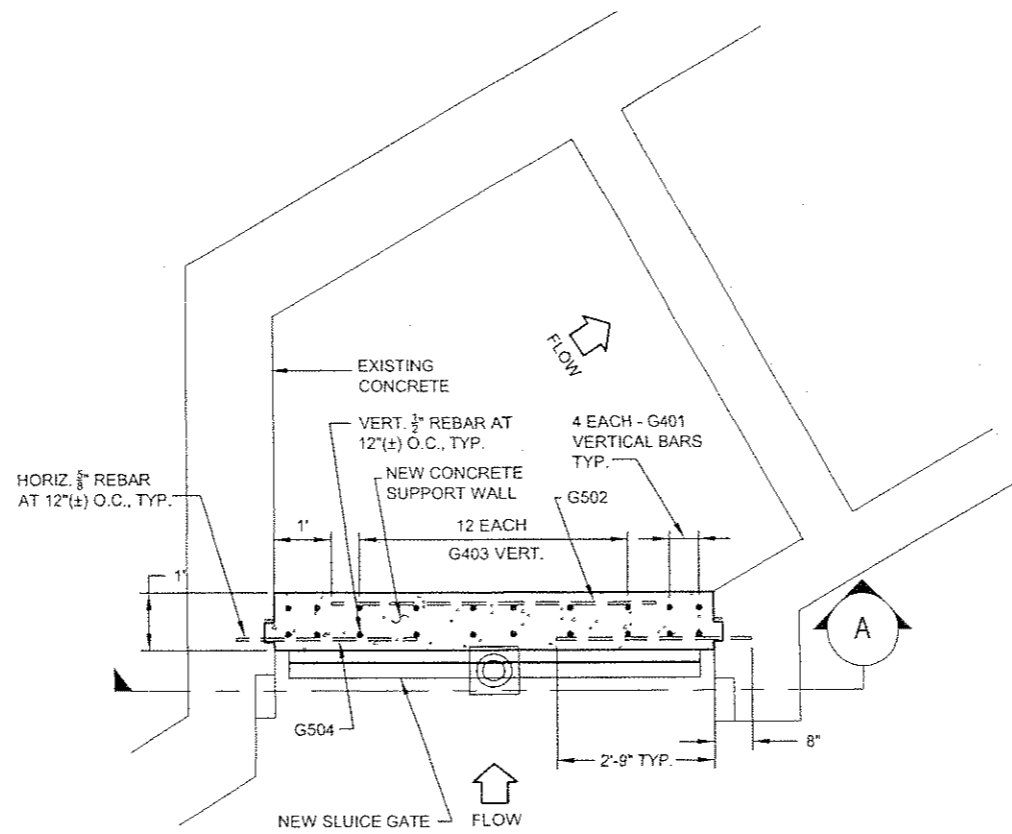
STATE OF ALASKA  
49th  
W. J. Holbrook  
REGISTERED PROFESSIONAL ENGINEER  
CC-6265  
1-14-09

STATE OF ALASKA  
DEPARTMENT OF TRANSPORTATION & PUBLIC FACILITIES  
SOUTHEAST REGION  
PSG AIRPORT MITIGATION  
FALLS CREEK FISH LADDER  
REPAIRS  
**GRATING ACCESS HATCH DETAILS**

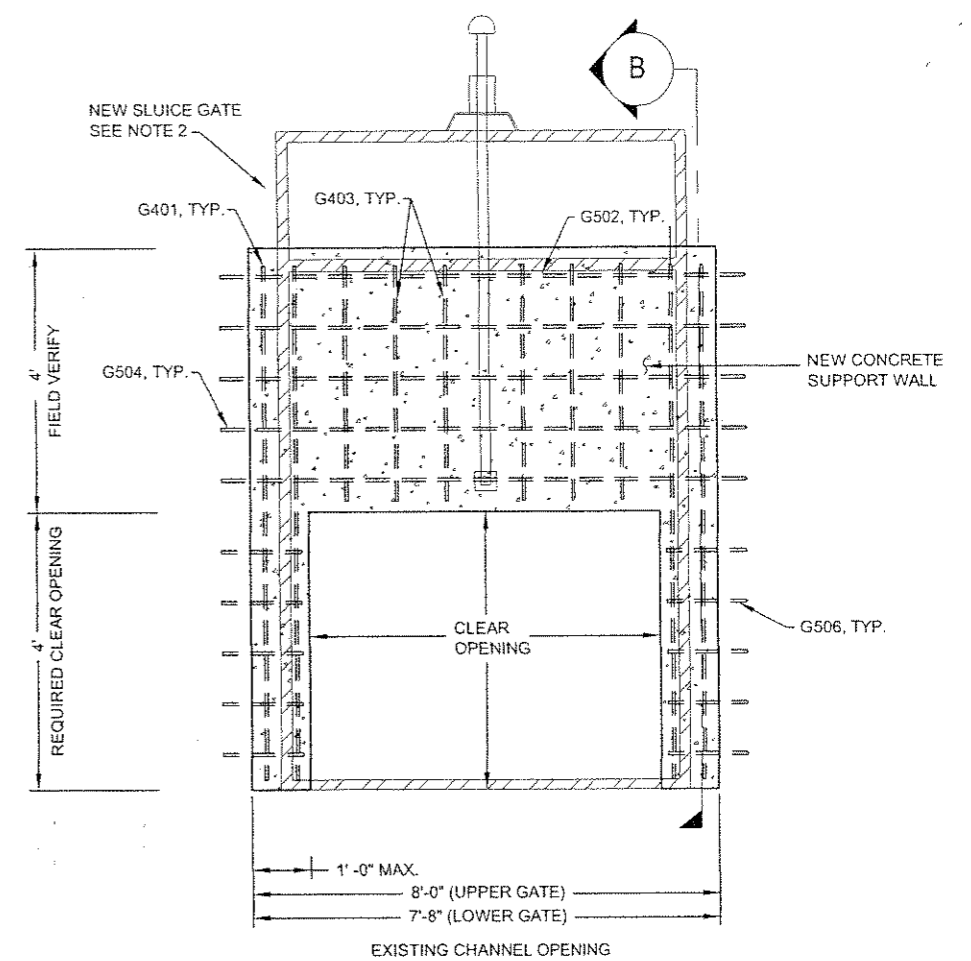
REVISIONS			PROJECT DESIGNATION	YEAR	SHEET NO.	TOTAL SHEETS
NO.	DATE	DESCRIPTION	AIP 3-02-0219-1108 - 68399	2008	5	11



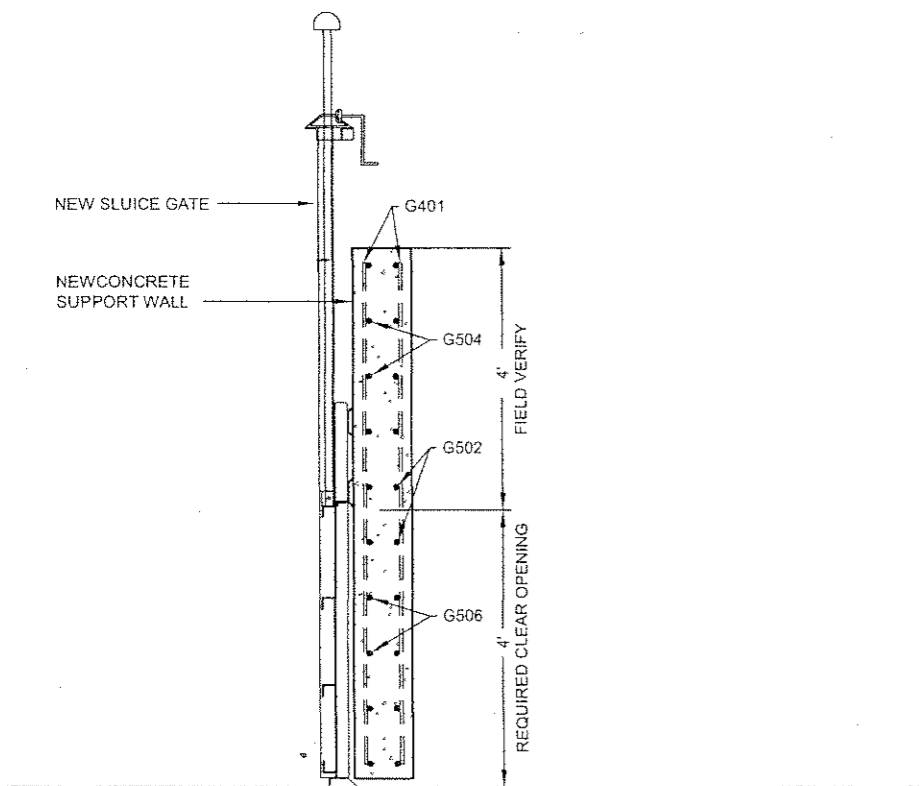
**SLUICE GATE & SUPPORT  
DEMOLITION PLAN**



**SLUICE GATE &  
SUPPORT PLAN**



**ELEVATION**



**END VIEW**

REINFORCING STEEL ONE GATE				
MARK	SIZE	NO.	LENGTH	TYPE
G401	4	8	9'-0"	STRAIGHT
G403	4	12	4'-6"	STRAIGHT
G502	5	10	6'-0"	STRAIGHT
G504	5	10	3'-5"	STRAIGHT
G506	5	10	1'-5"	STRAIGHT
BENDING DIAGRAM NONE REQUIRED REBAR WT. = 420#				

**SHEET NOTES:**

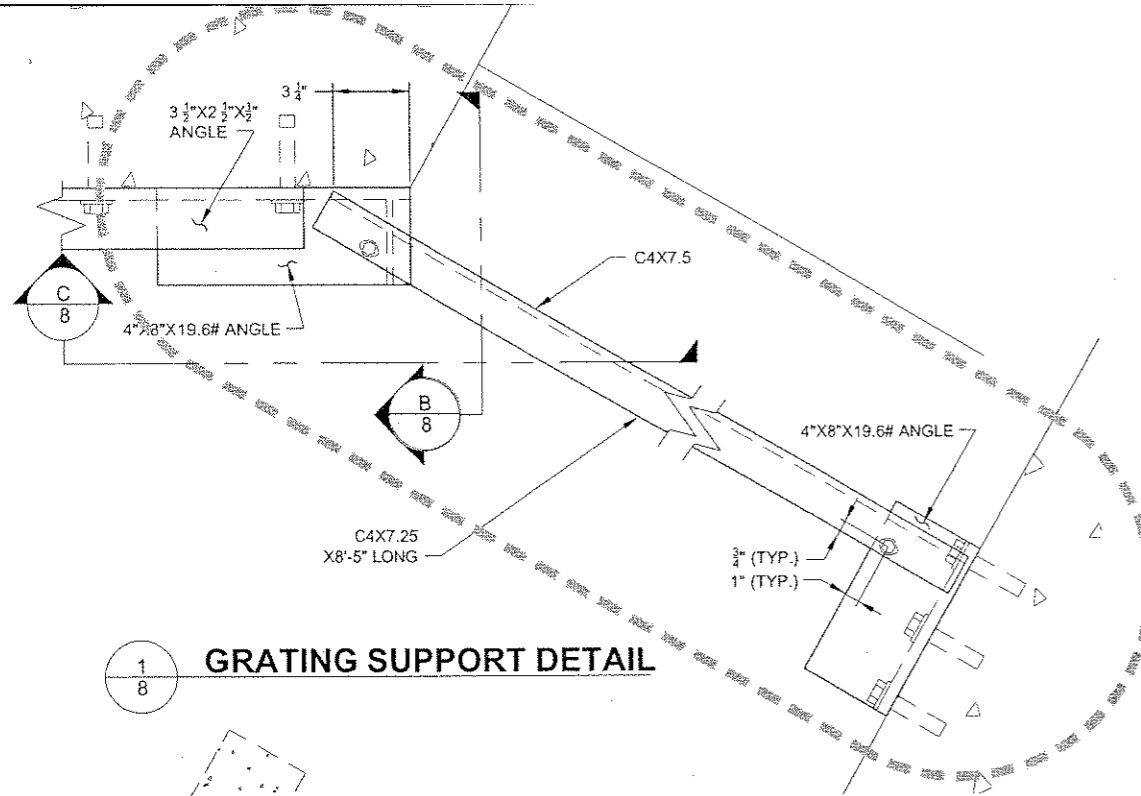
1. ALL REBAR SHALL BE 3" MIN. CLEAR (TO EXPOSED SURFACE OF CONCRETE).
2. MOUNT NEW SURFACE GATE PER MANUFACTURER WRITTEN RECOMMENDATION AND INSTRUCTIONS.
3. PRECAST CONCRETE PANELS SHALL NOT BE ALLOWED.
4. ALL CONCRETE SHALL BE CLASS A PER SECTION 501.

Project As-Built Drawings have been reviewed by the Project Engineer and represent to the best of my knowledge, the project as constructed.  
PE *William J. Holbrook* Date 12-15-09

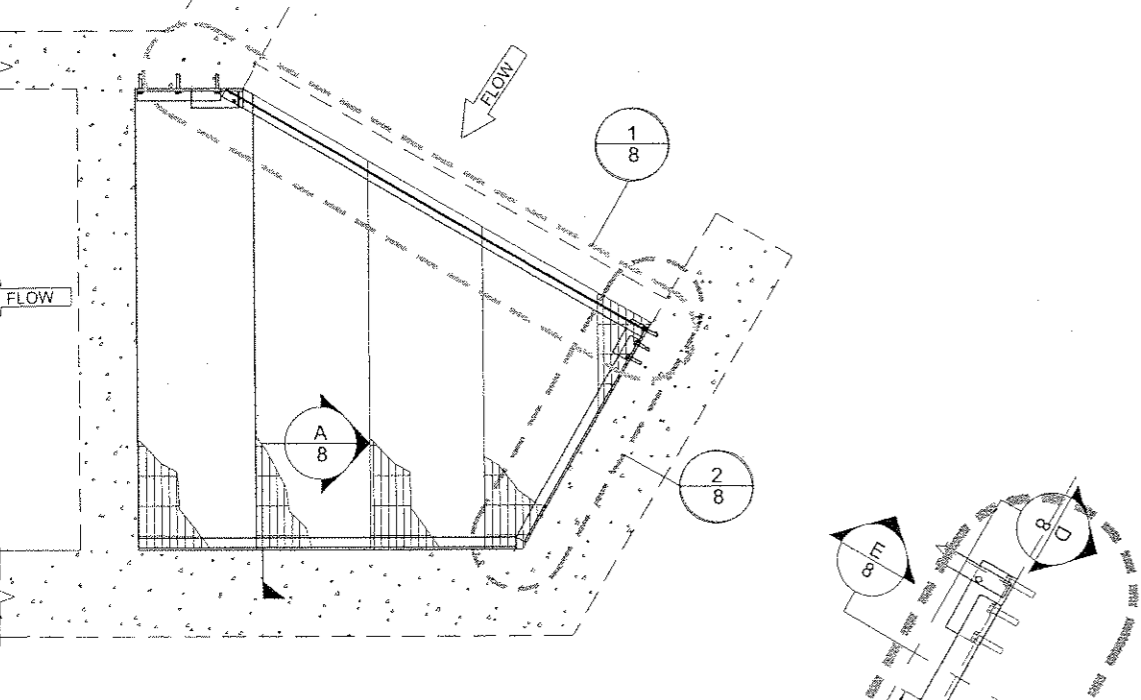
DO NOT SCALE FROM THESE DRAWINGS USE DIMENSIONS

CHECKED BY: W. HOLBROOK		STATE OF ALASKA DEPARTMENT OF TRANSPORTATION & PUBLIC FACILITIES SOUTHEAST REGION	
		PSG AIRPORT MITIGATION FALLS CREEK FISH LADDER REPAIRS	
DESIGNED BY: C. TRIPP		<b>SLUICE GATE DETAILS</b>	
DRAWN BY: STAFF		PROJECT DESIGNATION AIP 3-02-0219-1108 ~ 68399	
PATH: Q:\PSG\68399\PLANS\DETAILS.DWG		YEAR	SHEET NO.
TAB: 6		2008	6
REVISIONS		NO.	TOTAL SHEETS
NO.	DATE	DESCRIPTION	11



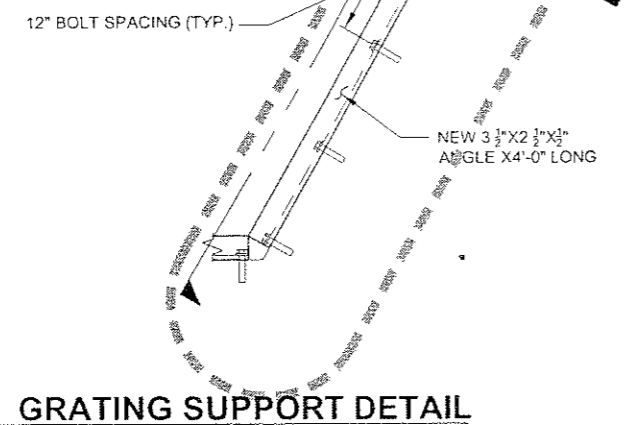


1/8 GRATING SUPPORT DETAIL

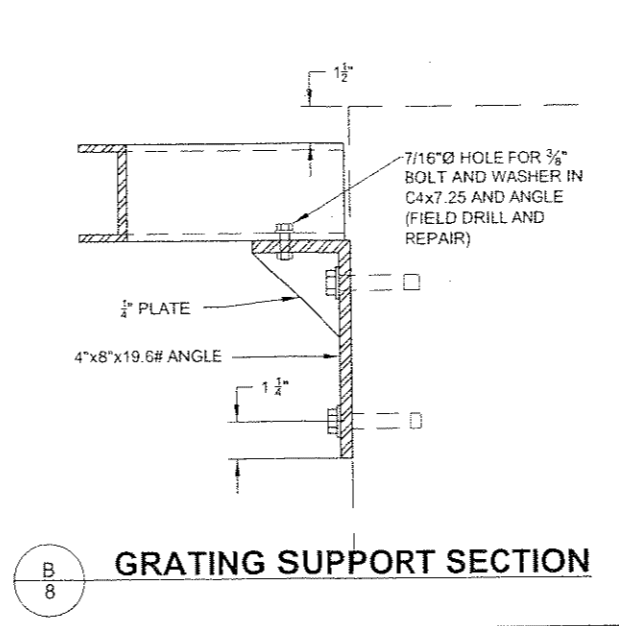


GRATING PLAN

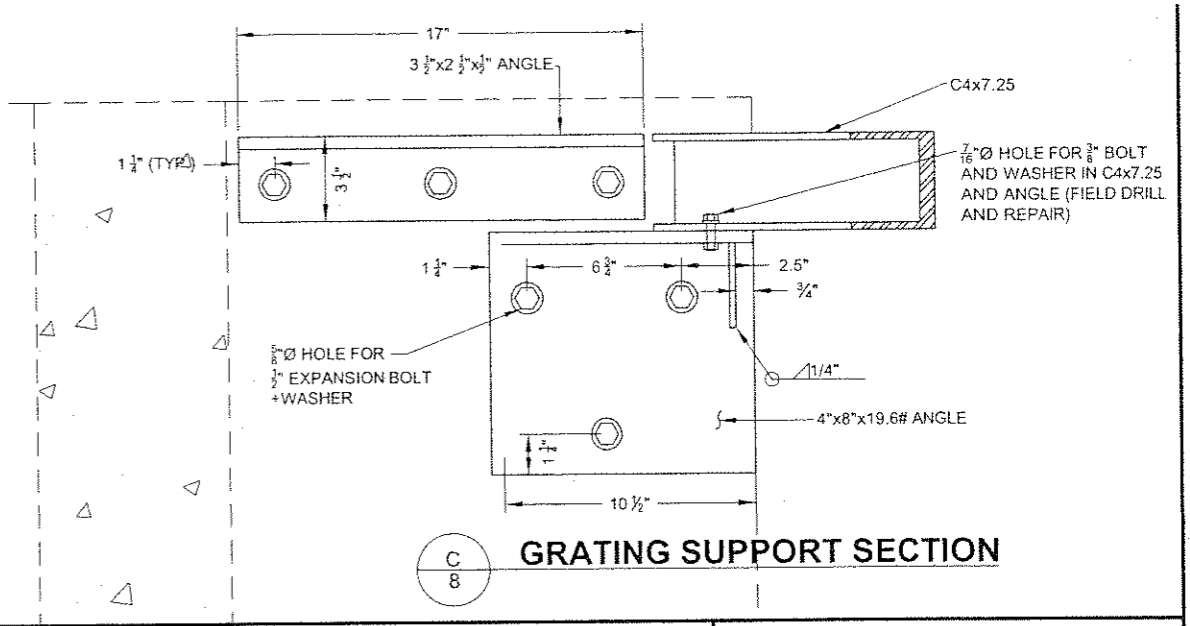
- SHEET NOTES:
1. ALL STEEL AND HARDWARE SHALL BE HOT-DIP GALVANIZED.
  2. SEE SECTION 504 SPECIALS FOR MORE INFORMATION.
  3. FIELD VERIFY ALL DIMENSIONS AND FIT BEFORE FABRICATION.



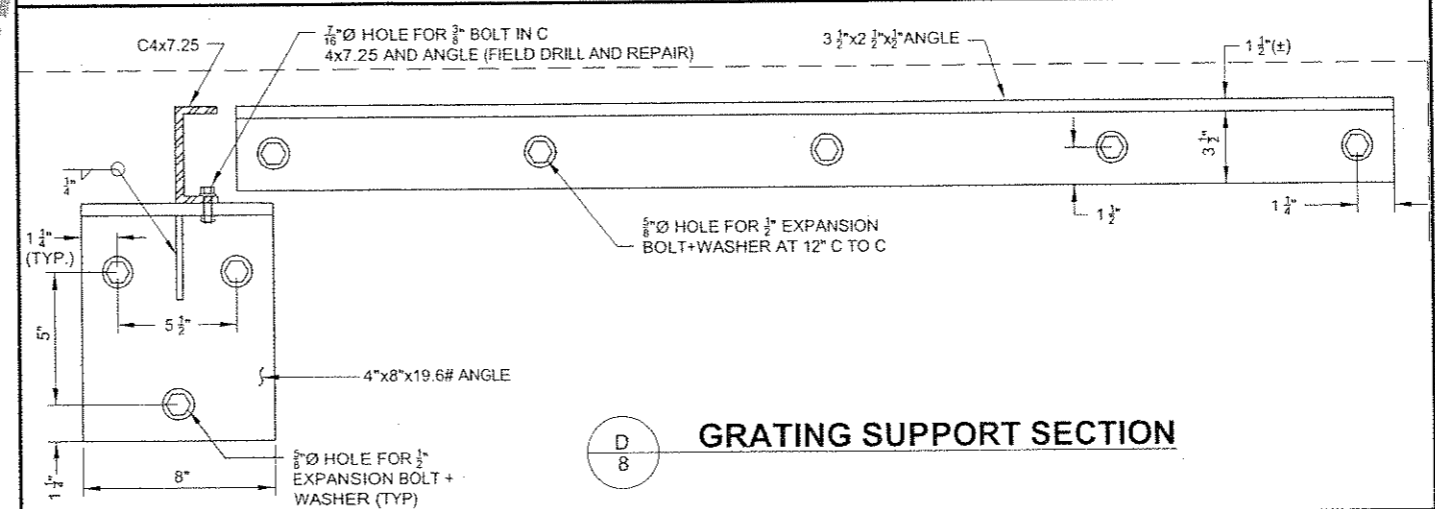
2/8 GRATING SUPPORT DETAIL



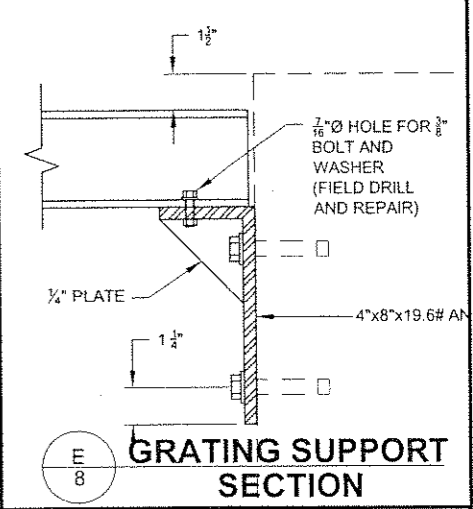
B/8 GRATING SUPPORT SECTION



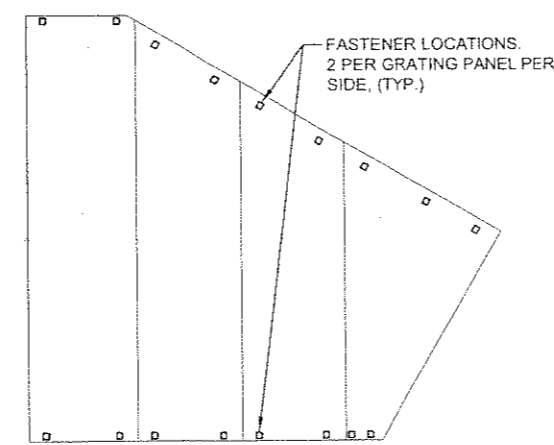
C/8 GRATING SUPPORT SECTION



D/8 GRATING SUPPORT SECTION

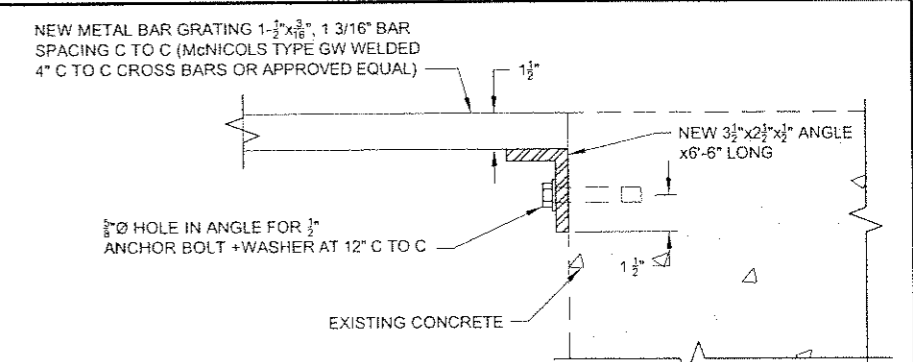


E/8 GRATING SUPPORT SECTION



GRATING FASTENER DETAIL

NOTE:  
1. USE SAME GRATING FASTENER DETAIL G SHOWN ON SHEET 5.



A/8 GRATING SUPPORT SECTION

Project As-Built Drawings have been reviewed by the Project Engineer and represent to the best of my knowledge, the project as constructed.  
PE *William J. Holbrook* Date 12-15-05

DO NOT SCALE FROM THESE DRAWINGS USE DIMENSIONS

CHECKED BY: W. HOLBROOK

DESIGNED BY: C. TRIPP  
DRAWN BY: STAFF

STATE OF ALASKA  
DEPARTMENT OF TRANSPORTATION & PUBLIC FACILITIES  
SOUTHEAST REGION

PSG AIRPORT MITIGATION  
FALLS CREEK FISH LADDER  
REPAIRS

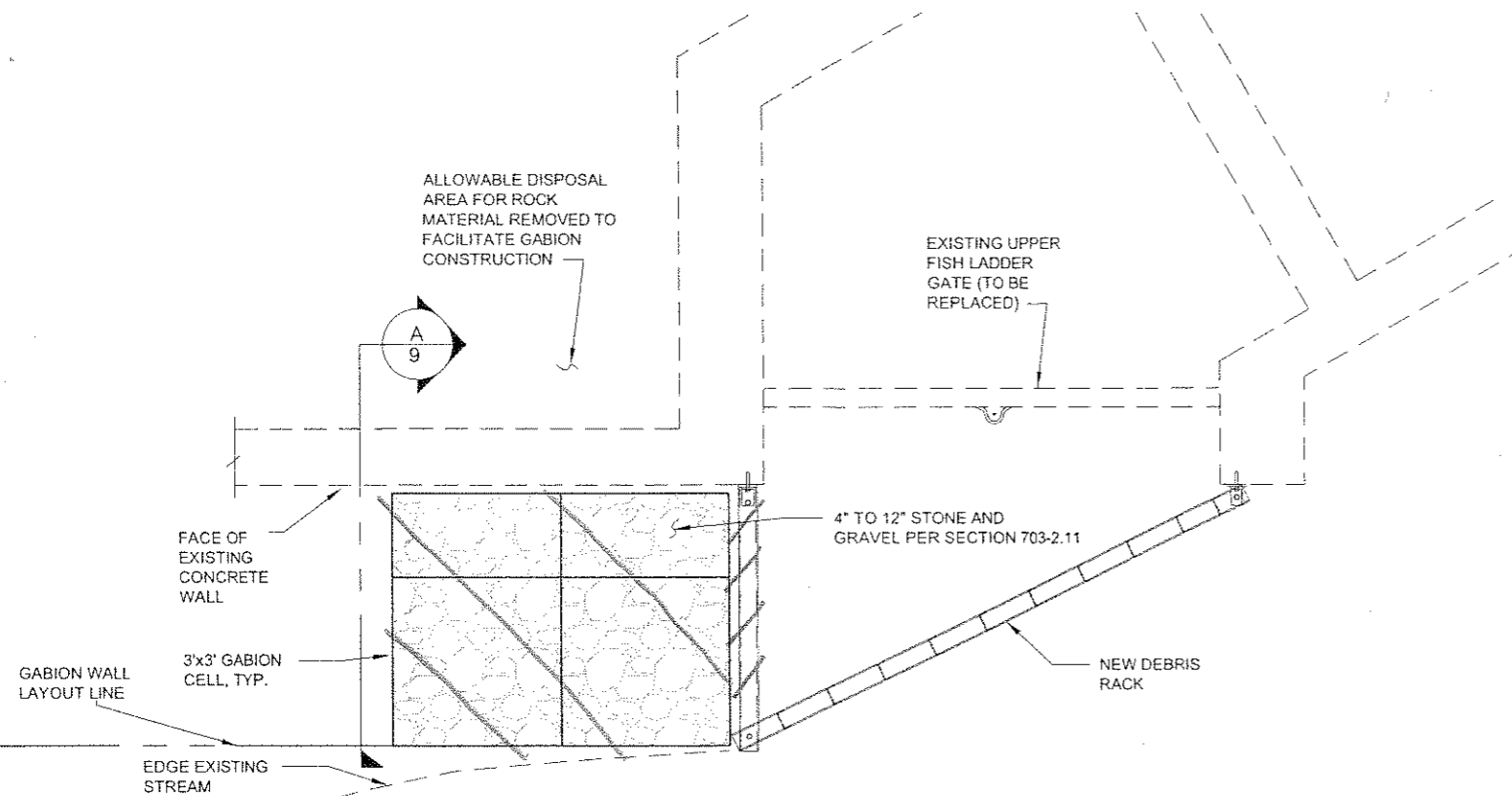
GRATING  
RECONSTRUCTION  
DETAILS

1-14-09

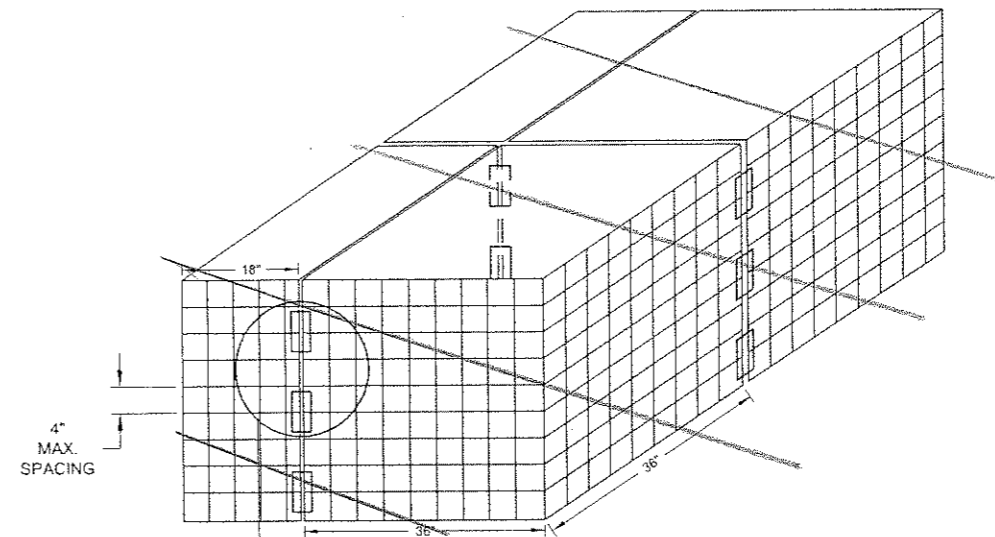
PATH: Q:\PSG\68399\PLANS\DETAILS.DWG  
TAB: 8

NO.	DATE	REVISIONS DESCRIPTION

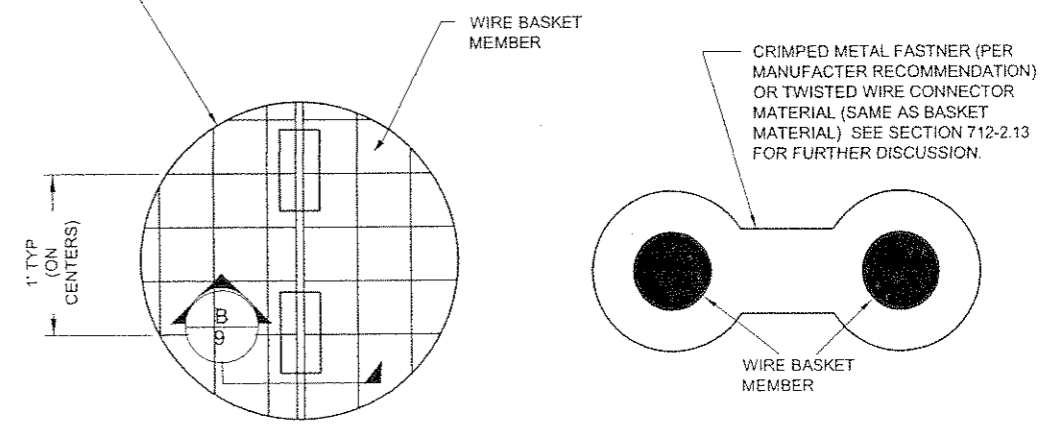
PROJECT DESIGNATION AIP 3-02-0219-1108 ~ 68399	YEAR 2008	SHEET NO. 8	TOTAL SHEETS 11
--	--------------	----------------	--------------------



**GABION WALL PLAN VIEW**



**ASSEMBLED GABION BASKET ISOMETRIC VIEW**




**CRIMPED METAL CONNECTOR DETAIL**

**CONNECTOR DETAIL**

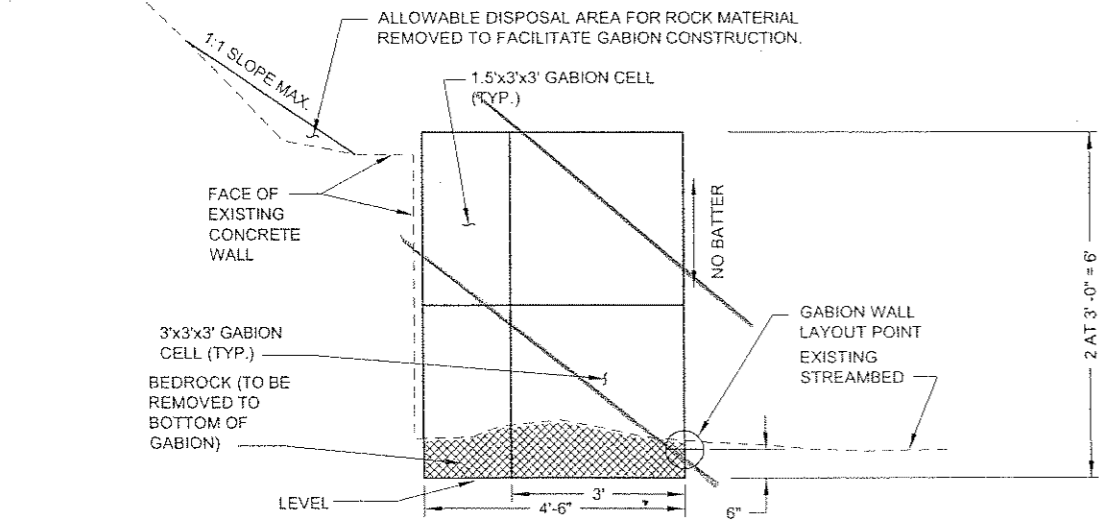
B  
9

Project As-Built Drawings have been reviewed by the Project Engineer and represent to the best of my knowledge, the project as constructed.  
 PE *Kevin J. Holbrook* Date *12-15-09*

DO NOT SCALE FROM THESE DRAWINGS USE DIMENSIONS

CHECKED BY: W. HOLBROOK  DESIGNED BY: C. TRIPP DRAWN BY: STAFF PATH: Q:\PSG\68399\PLANS\SET\DETAILS.DWG TAB: 9		STATE OF ALASKA DEPARTMENT OF TRANSPORTATION & PUBLIC FACILITIES SOUTHEAST REGION <b>PSG AIRPORT MITIGATION          FALLS CREEK FISH LADDER          REPAIRS</b> <b>GABION DETAILS</b>		
REVISIONS NO. DATE DESCRIPTION	PROJECT DESIGNATION AIP 3-02-0219-1108 - 68399	YEAR 2008	SHEET NO. 9	TOTAL SHEETS 11

**NOTE:**  
 1. ALL STREAMBED MATERIAL (SAND, GRAVEL, MUD, AND/OR ORGANIC DEBRIS) SHALL BE CONSIDERED WASTE MATERIAL AND DISPOSED OF AT AN APPROVED OFFSITE LOCATION.

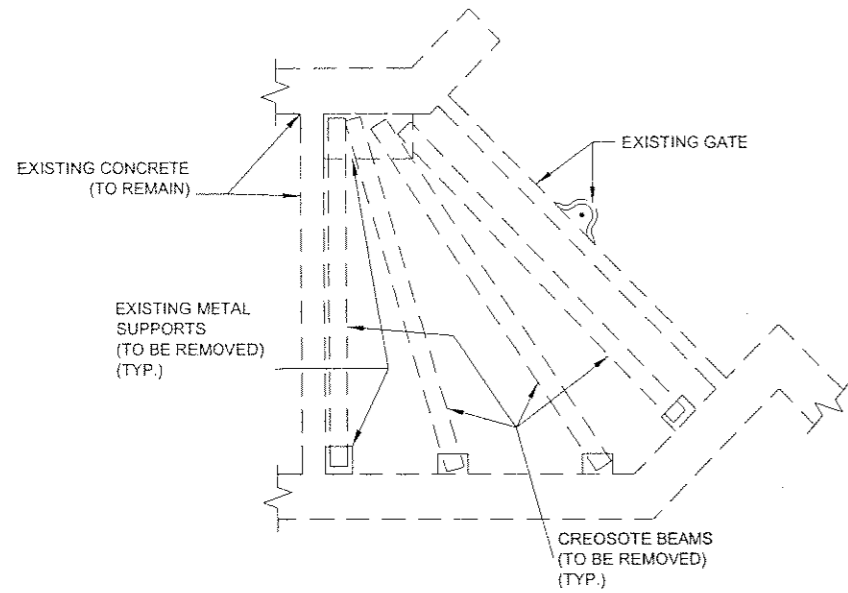


**GABION WALL SECTION VIEW**

A  
9

**REMOVAL NOTES:**

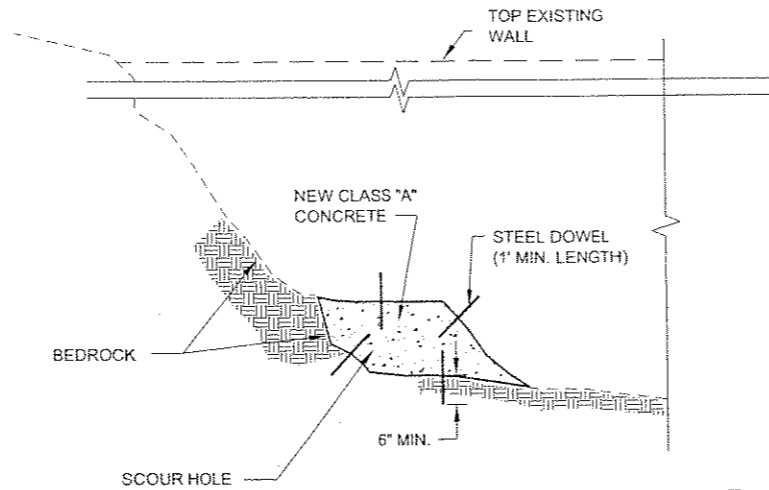
1. EXISTING METAL GRATING NOT SHOWN FOR CLARITY.
2. SEE SPECIALS SECTION 641 AND APPENDIX B ENVIRONMENTAL COMMITMENTS FOR SPECIAL HANDLING AND DISPOSAL REQUIREMENTS.



**CREOSOTE SUPPORT BEAM REMOVAL DETAIL AT UPPER SLUICE GATE PLATFORM**

**REPAIR NOTES:**

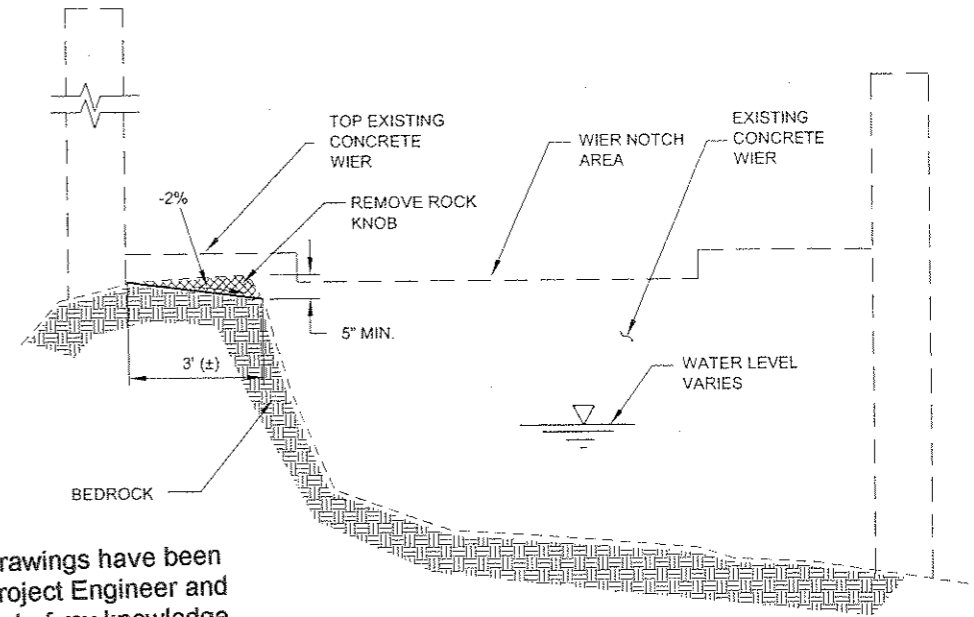
1. REPAIR HOLE IN WALL WITH CONCRETE. GROUT 1/2"x12" DOWL 6" INTO ROCK/CONCRETE ON 4 SIDES. CLEAR AWAY LOOSE ROCK AND CONCRETE. POUR CONCRETE FLUSH WITH SIDES AND TOP.
2. SEE CORRESPONDING LOCATION PHOTOS SHOWN IN SPECIAL PROVISIONS APPENDIX E.



**SCOUR HOLE (LOCATION #1) FRONT VIEW LOOKING SOUTHEAST**

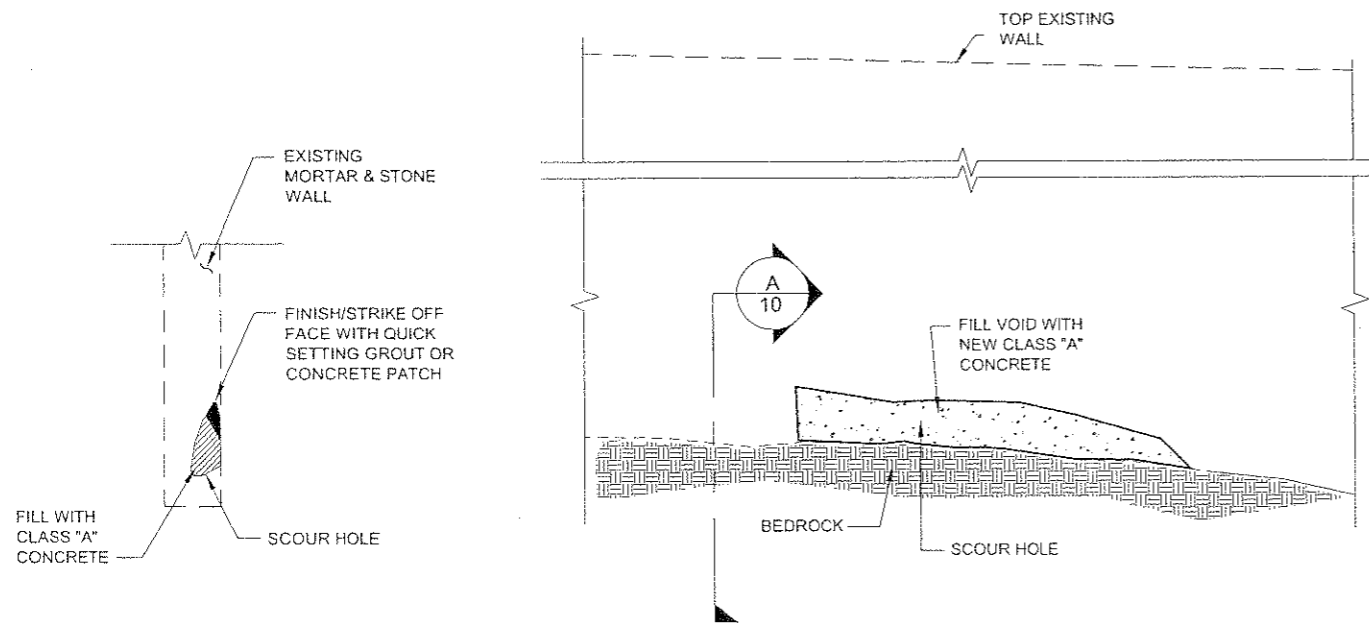
**REPAIR NOTES:**

1. REMOVE ROCK KNOB AS SHOWN SO RESULTING LEDGE SLOPES AWAY FROM EXISTING WALL AND TOWARDS WIER NOTCH.



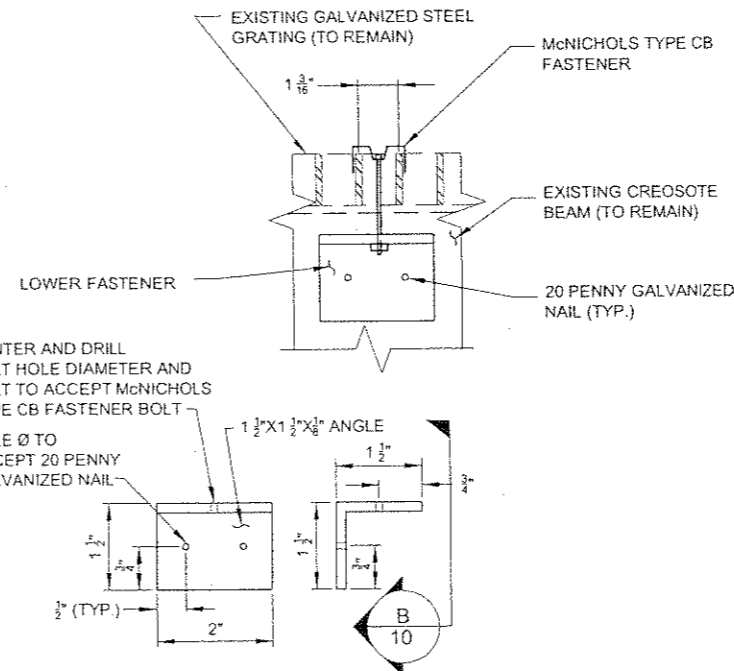
**FISH TRAP (LOCATION #5) FRONT VIEW LOOKING NORTHEAST**

Project As-Built Drawings have been reviewed by the Project Engineer and represent to the best of my knowledge, the project as constructed.  
 PE *William J. Holbrook* Date 12-15-09

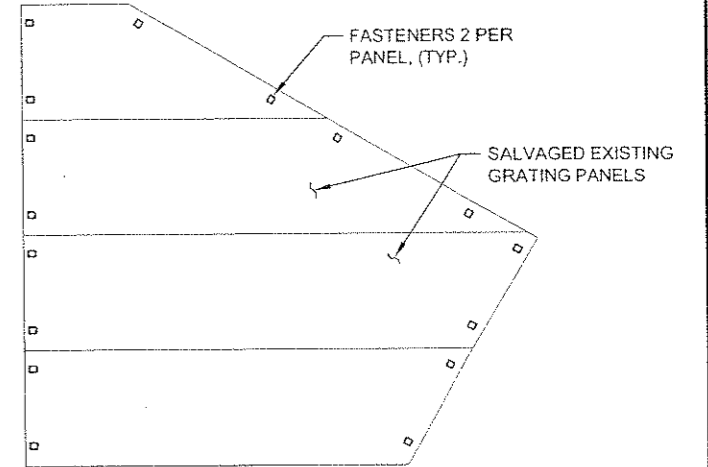


**SCOUR HOLE (LOCATION #8) FRONT VIEW LOOKING SOUTHWEST**

**SECTION A-10**



**LOWER FASTENER DETAIL**

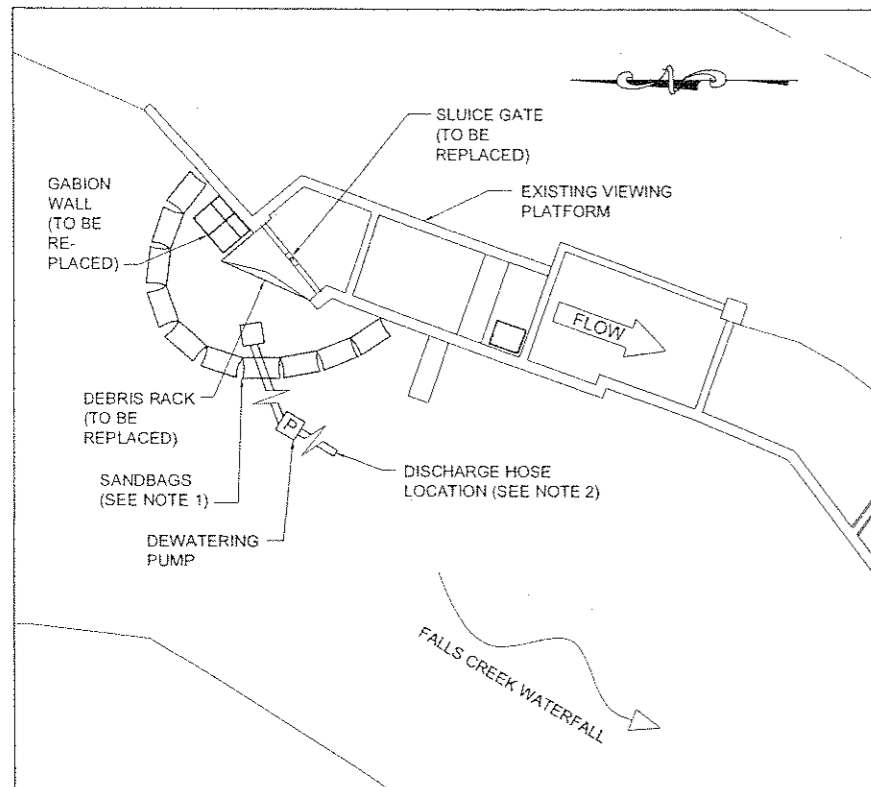


**GRATING FASTENER DETAIL AT LOWER SLUICE GATE PLATFORM**

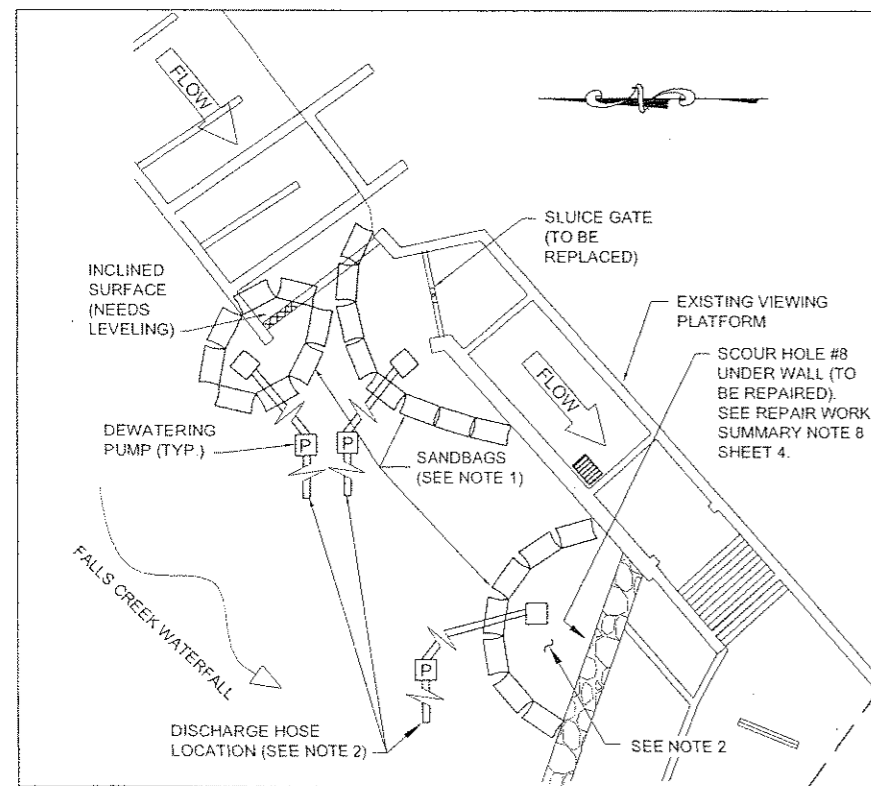
**FASTENER LAYOUT LOCATIONS AT LOWER GATE PLATFORM**

DO NOT SCALE FROM THESE DRAWINGS USE DIMENSIONS

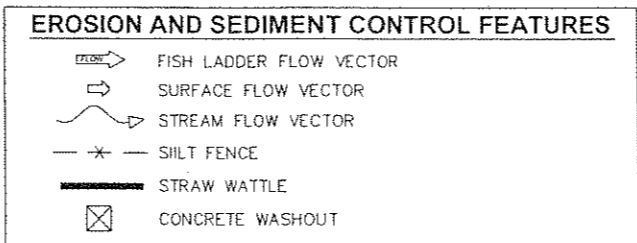
CHECKED BY: W. HOLBROOK 		STATE OF ALASKA DEPARTMENT OF TRANSPORTATION & PUBLIC FACILITIES SOUTHEAST REGION PSG AIRPORT MITIGATION FALLS CREEK FISH LADDER REPAIRS	
DESIGNED BY: C. TRIPP DRAWN BY: STAFF PATH: Q:\PSG\68399\PLANS\DETAILS.DWG TAB: 10		<b>MISCELLANEOUS DETAILS</b>	
REVISIONS NO. DATE DESCRIPTION		PROJECT DESIGNATION AIP 3-02-0219-1108 - 68399	YEAR: 2008 SHEET NO.: 10 TOTAL SHEETS: 11



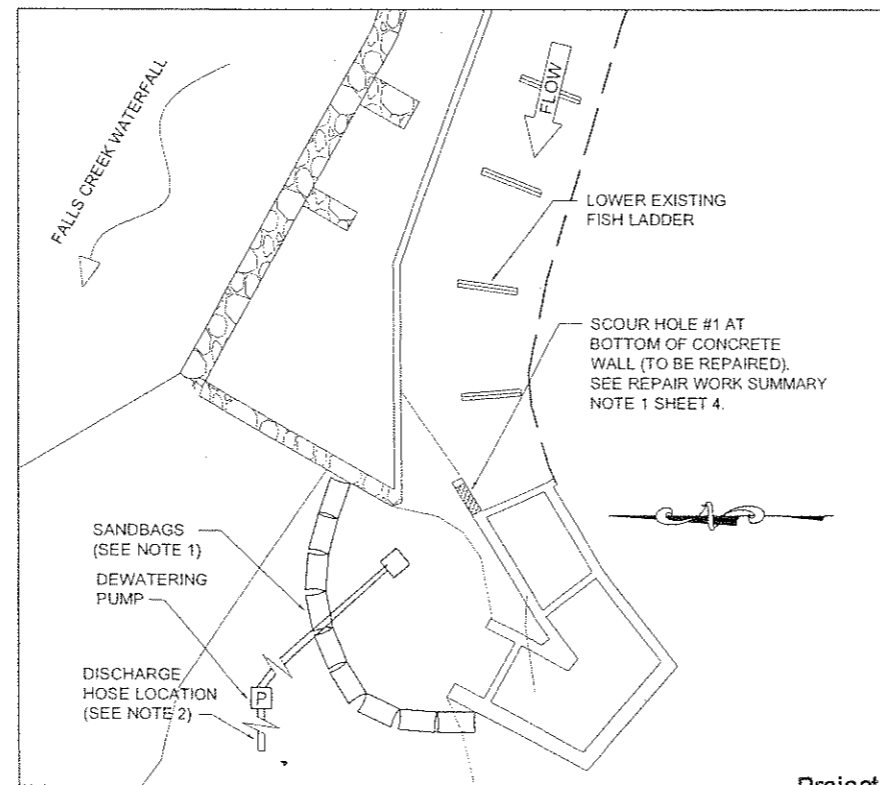
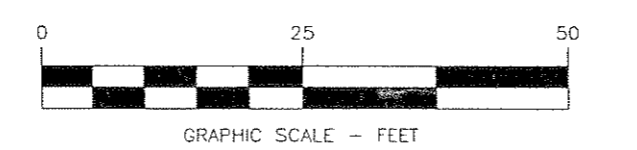
**WORK AREA 1  
UPPER SLUICE GATE**



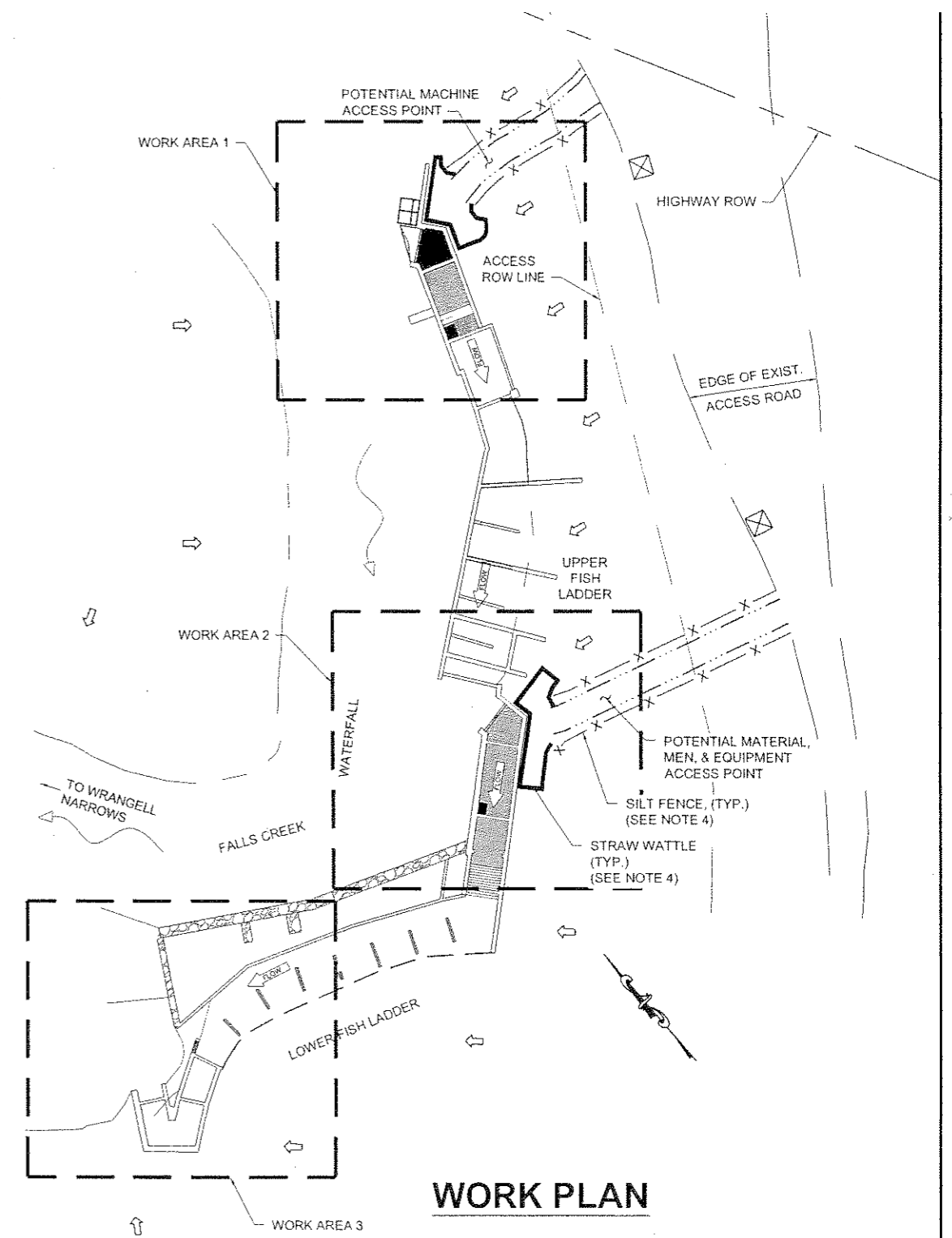
**WORK AREA 2  
LOWER SLUICE GATE**



- NOTES:**
- 1 STREAM FLOW SHALL BE PREVENTED FROM ENTERING WORK AREAS BY USE OF SAND BAGS.
  - 2 IF DEWATERING PUMPS ARE USED, DISCHARGE SHALL BE BACK INTO FALLS CREEK, PROVIDED WATER DOES NOT CONTAIN HIGH FINES CONTENT OR CONCRETE RESIDUE.
  - 3 NO IN STREAM WATER WORK, AUGUST 16 TO MAY 31, EXCEPT THAT WORK DONE OUTSIDE THESE TIMING WINDOWS IS ACCEPTABLE ONLY IF AKDOT (CONTRACTOR) FOLLOWS THE CONSTRUCTION PROCEDURES DESCRIBED IN THE TITLE 16 FISH HABITAT PERMIT.
  - 4 CONTRACTOR SHALL PROVIDE STRAW WATTLE OR SILT FENCE SLOPE DISTURBANCE BMP CONTROL AT ACCESS POINTS AS DIRECTED.



**WORK AREA 3  
FISH LADDER OUTFALL**



**WORK PLAN**

Project As-Built Drawings have been reviewed by the Project Engineer and represent to the best of my knowledge, the project as constructed.  
 PE *William J. Holbrook* Date 12-15-09

DO NOT SCALE FROM THESE DRAWINGS USE DIMENSIONS

CHECKED BY: W. HOLBROOK		STATE OF ALASKA DEPARTMENT OF TRANSPORTATION & PUBLIC FACILITIES SOUTHEAST REGION	
		<b>PSG AIRPORT MITIGATION FALLS CREEK FISH LADDER REPAIRS</b>	
DESIGNED BY: C. TRIPP	DATE: 1-14-09	PROJECT DESIGNATION: AIP 3-02-0219-1108 ~ 68399	YEAR: 2008
DRAWN BY: STAFF		SHEET NO.: 11	TOTAL SHEETS: 11
PATH: Q:\PSG\68399\PLANS\WORK_AREAS.DWG			
TAB: 11			
REVISIONS			
NO.	DATE	DESCRIPTION	