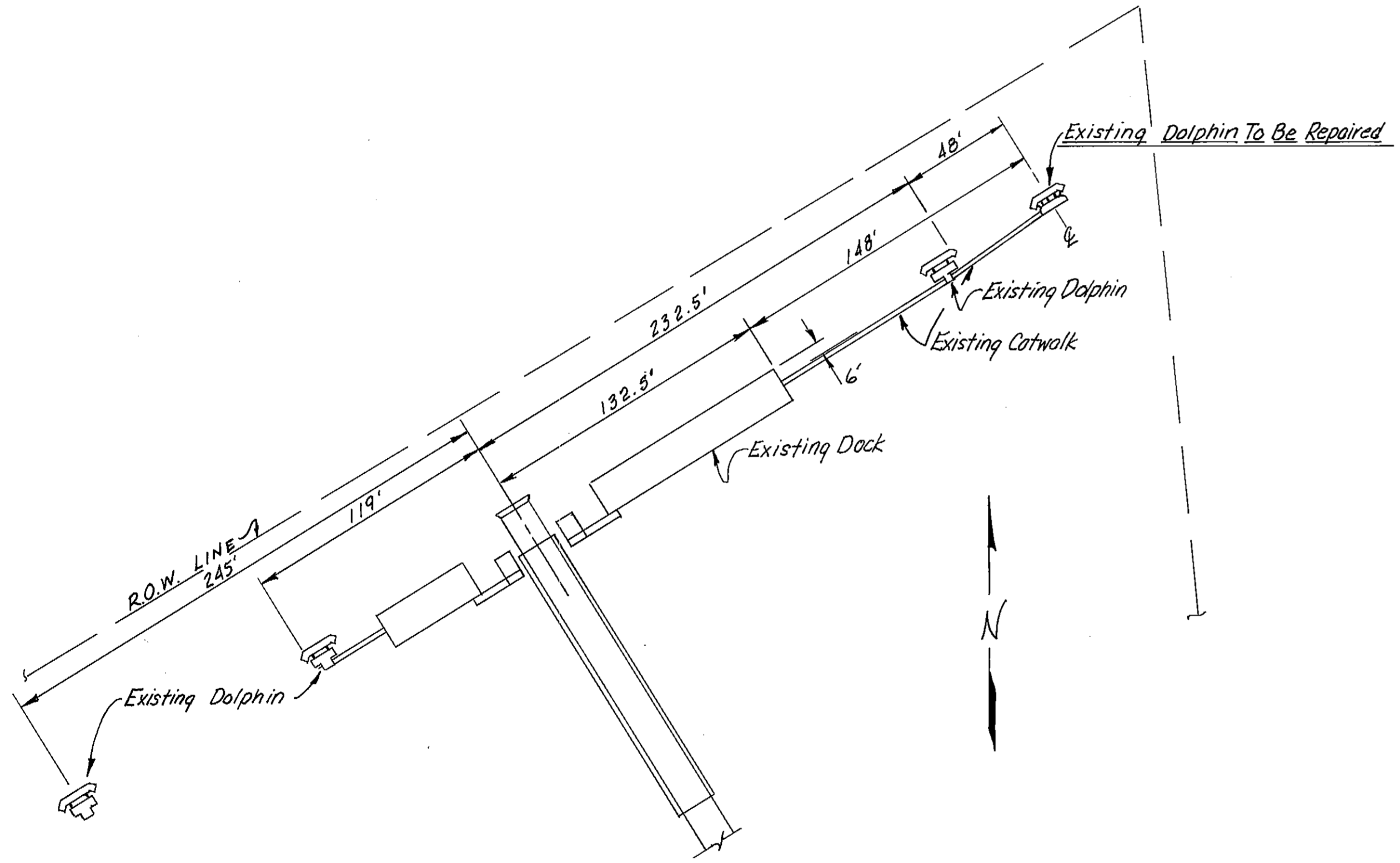
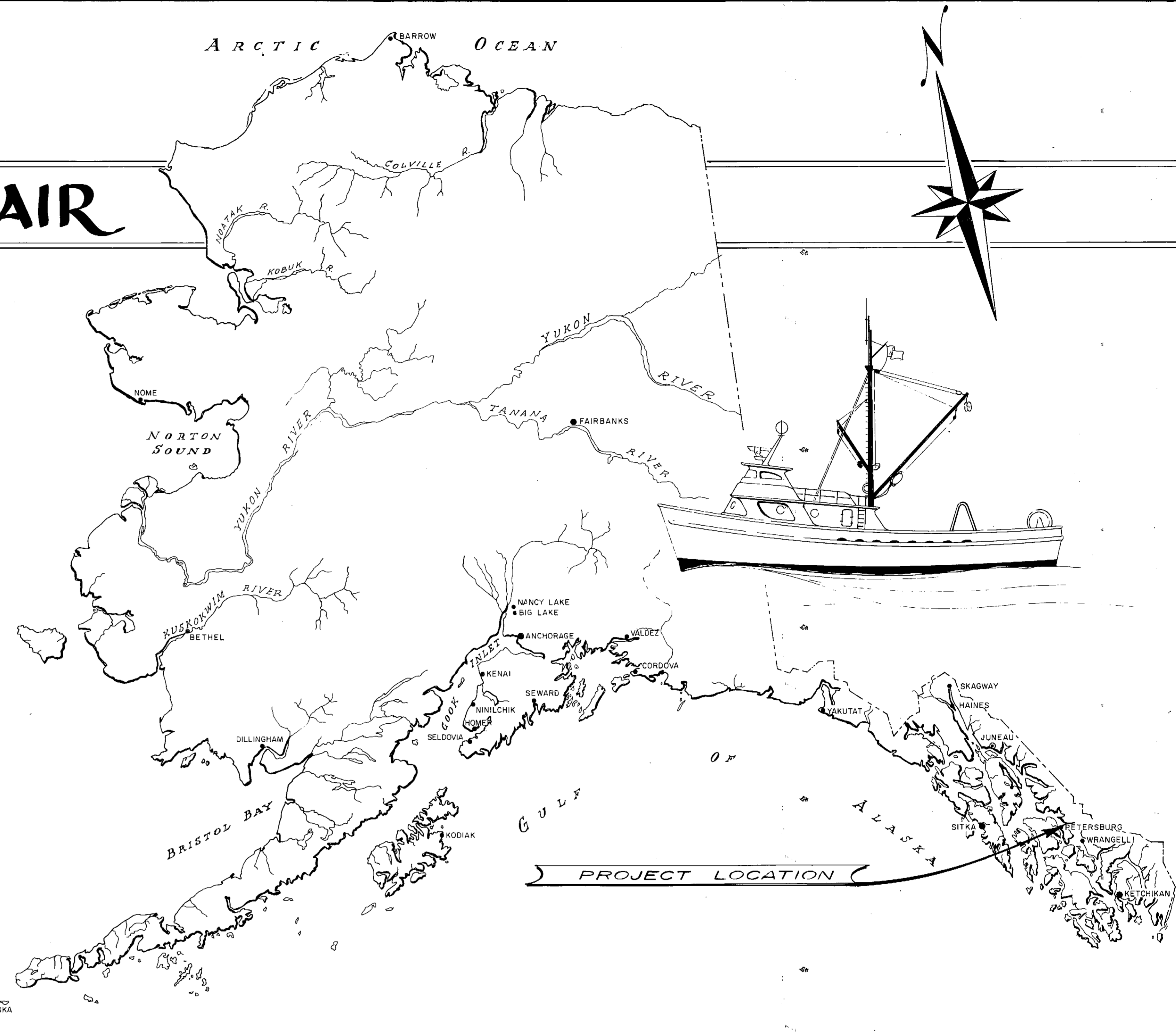


# PETERSBURG NORTH FERRY DOLPHIN REPAIR PROJECT NO. 6-77205



PROJECT LAYOUT  
1" = 50'

**WORK SUMMARY**

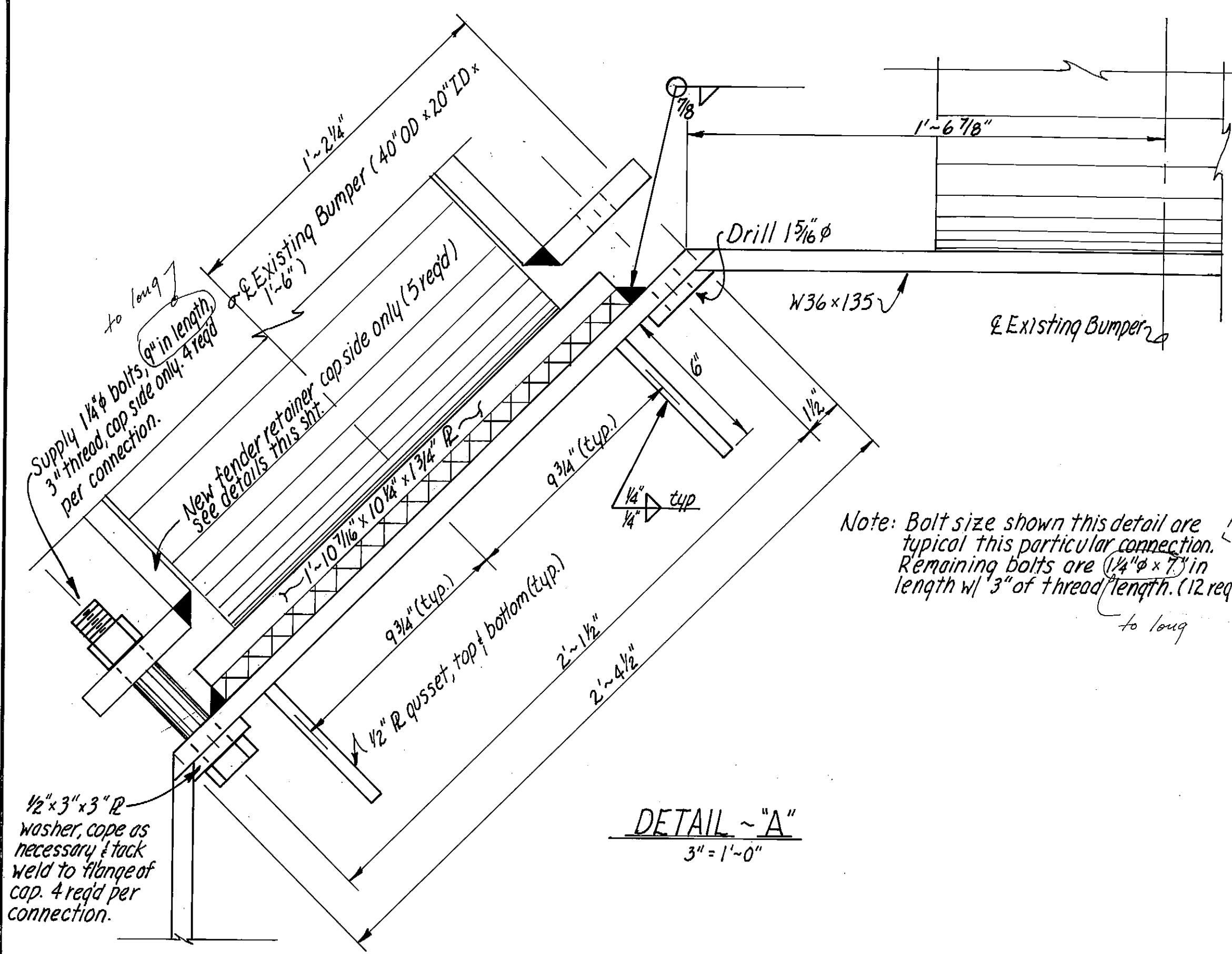
*Project consists of removing & disposing of the existing concrete dolphin cap & six (6) damaged steel piles; furnishing & installing a new steel dolphin cap & six (6) new concrete filled steel piles; and resecurting the existing steel & timber tender system & steel catwalk to the new dolphin cap.*

**INDEX TO SHEETS**

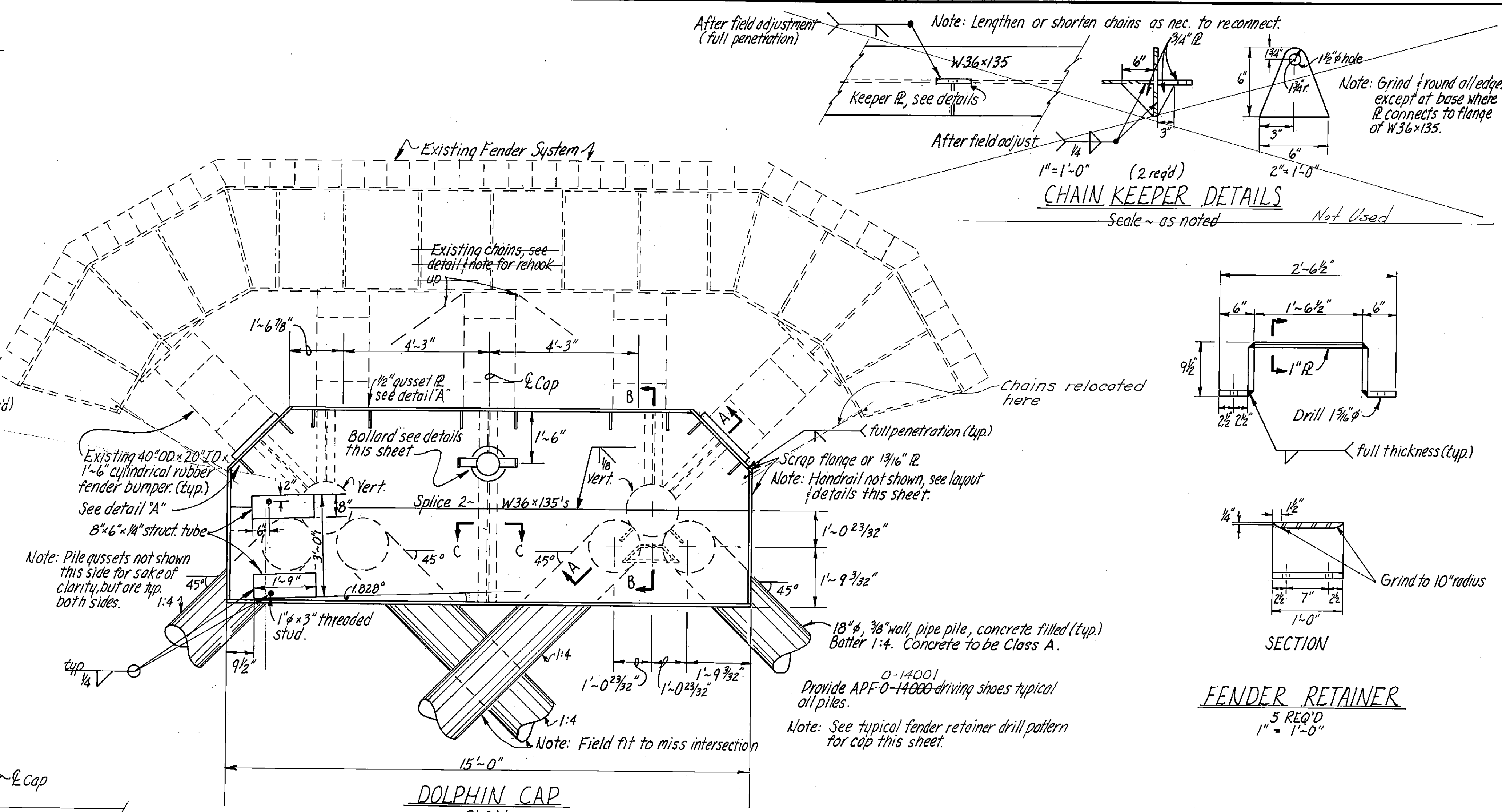
1	TITLE, LOCATION, & LAYOUT	
2	DOLPHIN CONSTRUCTION DETAILS	

**STATE OF ALASKA**      **DEPARTMENT OF PUBLIC WORKS**  
**DIVISION OF WATER & HARBORS**

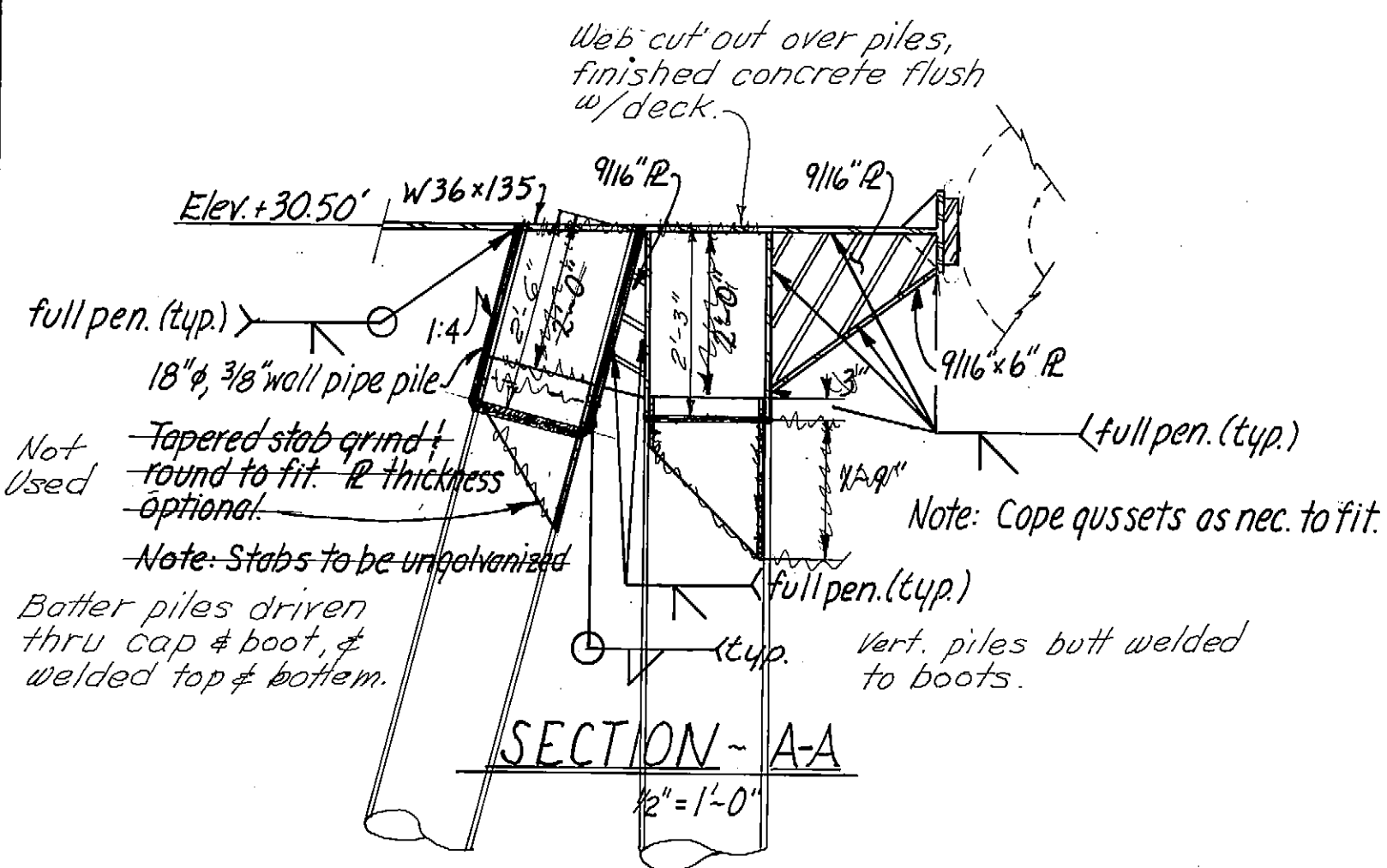
**As Constructed**  
APPROVED  
*Wm. Statter*  
DIRECTOR  
DATE: 7/25/77  
SHEET 1 OF 2



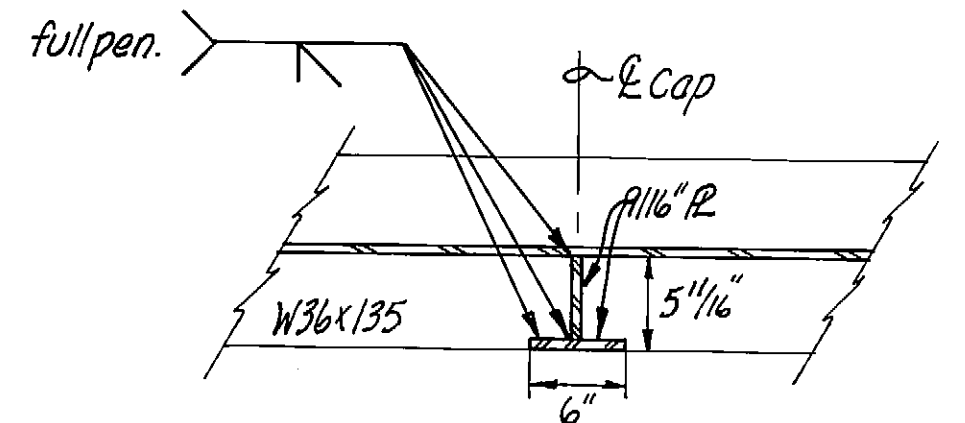
**DETAIL - A**  
3\"/>



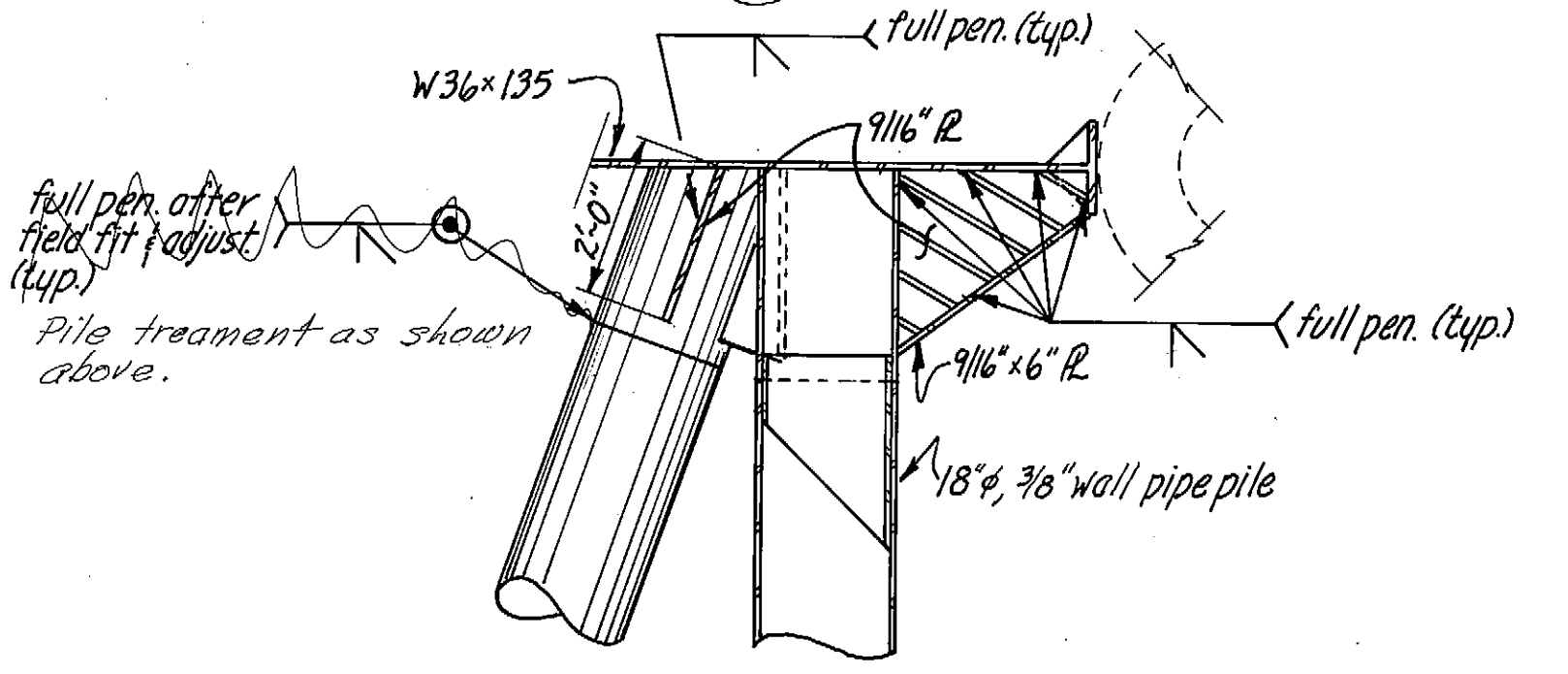
**DOLPHIN CAP**  
PLAN  
1/2\"/>



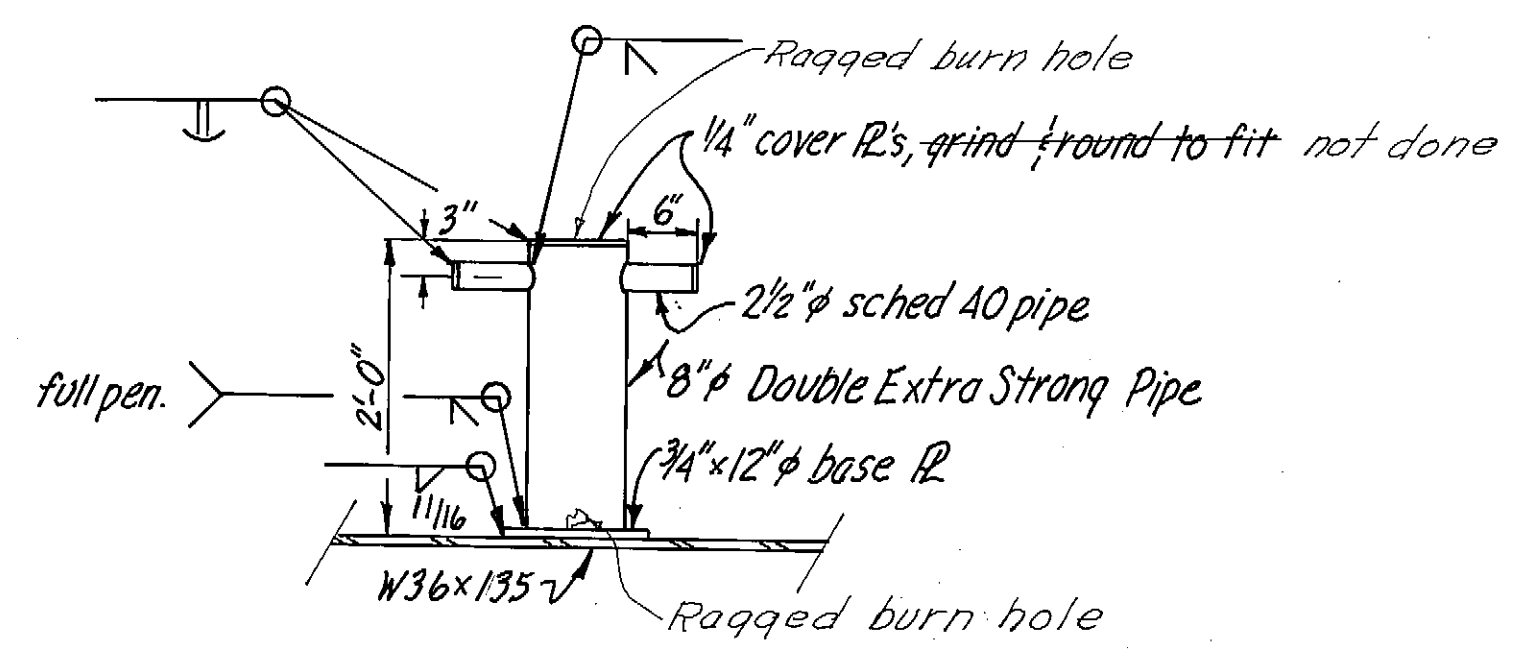
**SECTION - A-A**  
1/2\"/>



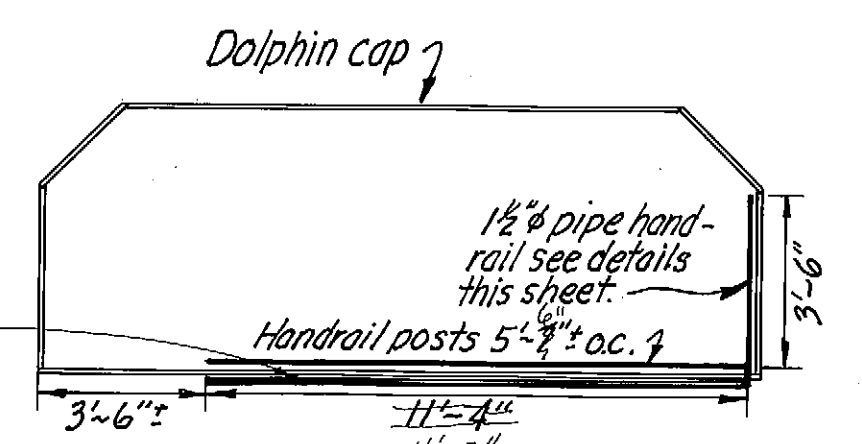
**SECTION - C-C**  
1\"/>



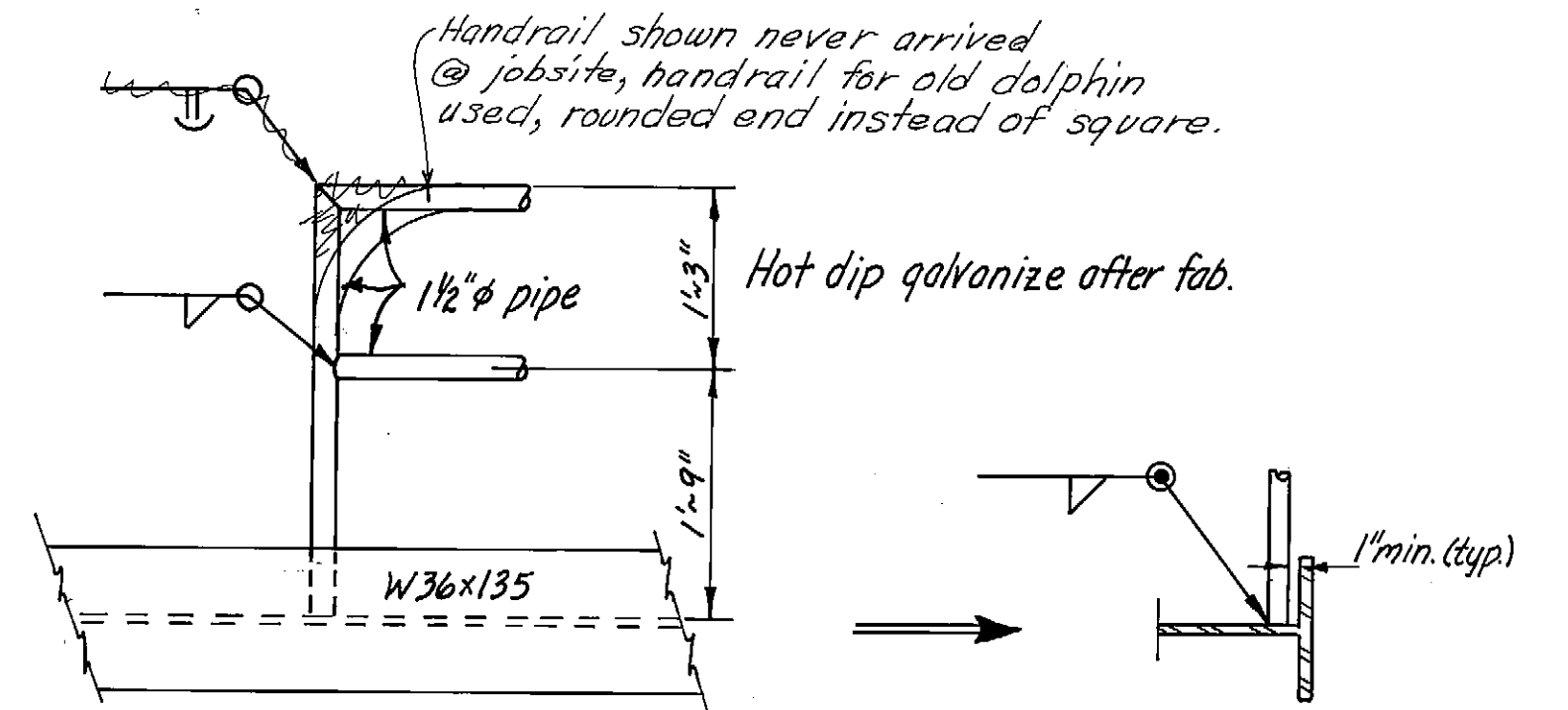
**SECTION - B-B**  
1/2\"/>



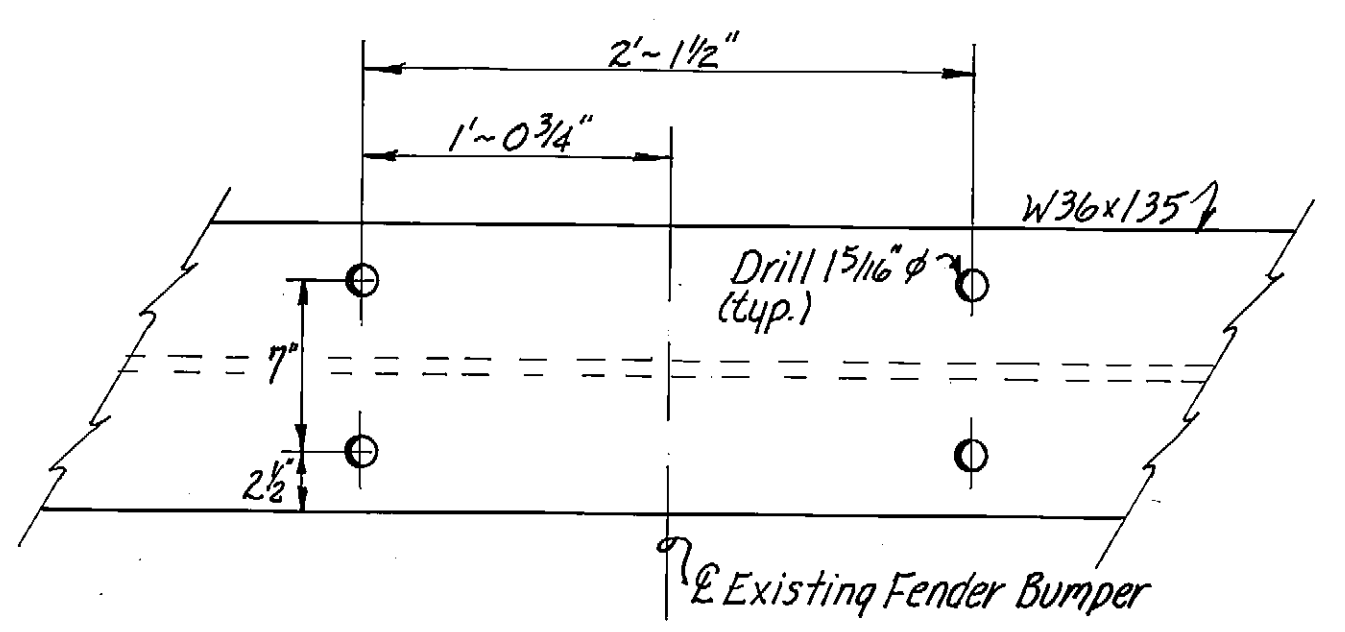
**BOLLARD DETAIL**  
3/4\"/>



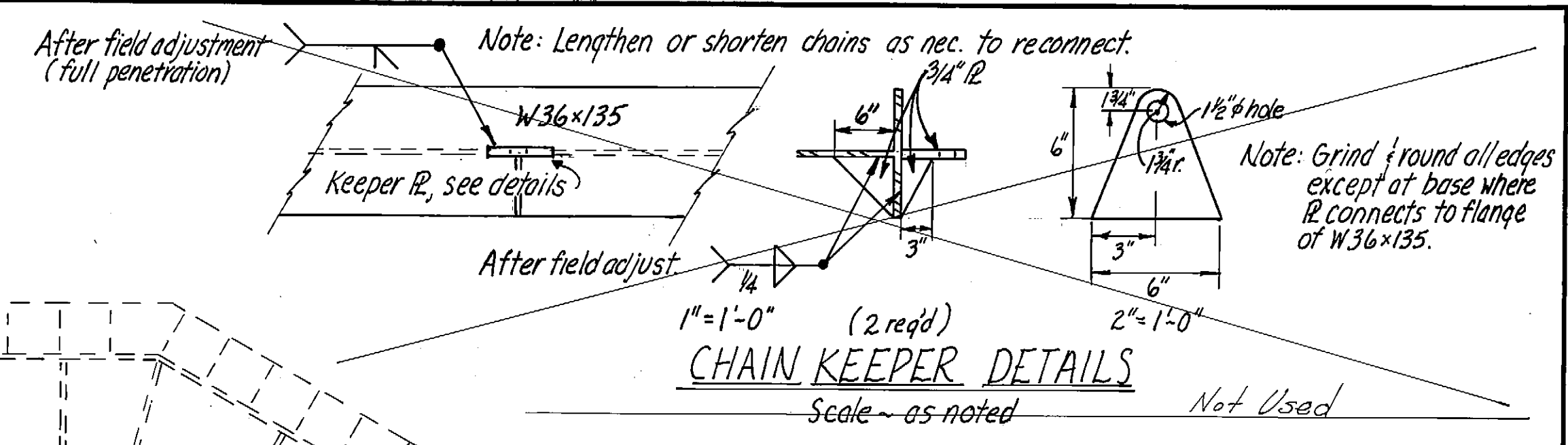
**HANDRAIL LAYOUT**  
1/4\"/>



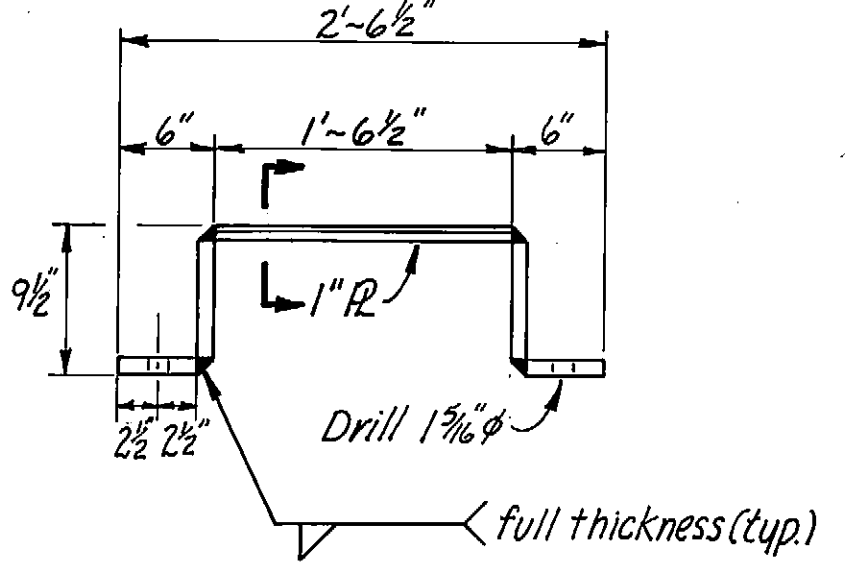
**HANDRAIL DETAIL**  
3/4\"/>



**TYPICAL FENDER RETAINER DRILL PATTERN**  
1/2\"/>



**CHAIN KEEPER DETAILS**  
Scale - as noted



**SECTION**  
5 REQ'D  
1\"/>

**FENDER RETAINER**  
5 REQ'D  
1\"/>

NOTES:  
Pipe piles were driven min. 32' penetration.  
All structural steel, pipe piles & hardware to be hot dip galvanized after fabrication.

DO NOT SCALE THIS DRAWING - USE DIMENSIONS		
STATE OF ALASKA DEPARTMENT OF PUBLIC WORKS DIVISION OF WATER AND HARBORS		
<b>DOLPHIN CONSTRUCTION DETAILS</b> <b>As Constructed</b>		
SCALE: As noted	SURVEYED: -	APPROVED: -
DESIGNED: JLL	DRAWN: JLL	Don Statter DIRECTOR
CHECKED: -	DATE: 4/21/77	
PROJECT NUMBER: 6-77205	SHEET 2 OF 2	

