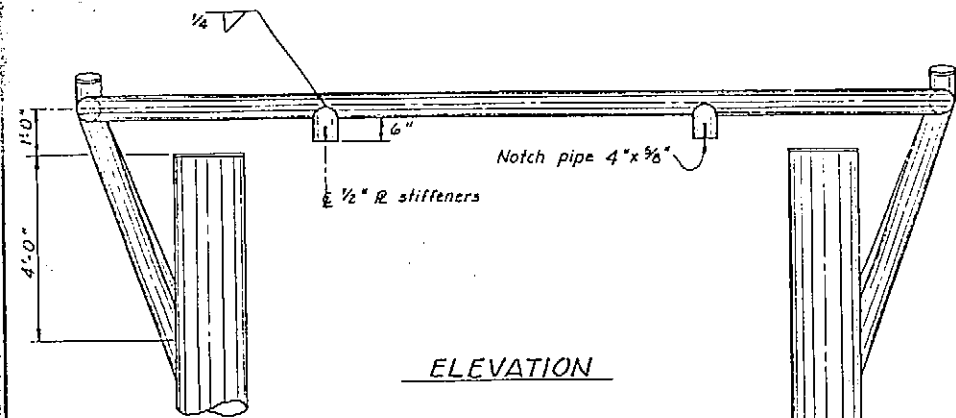


40" O.D. x 20" I.D.
 x 1'-6" cyl. fenders,
 same as torsion dolph.
 5 installed

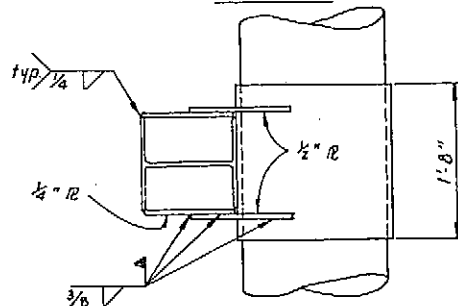
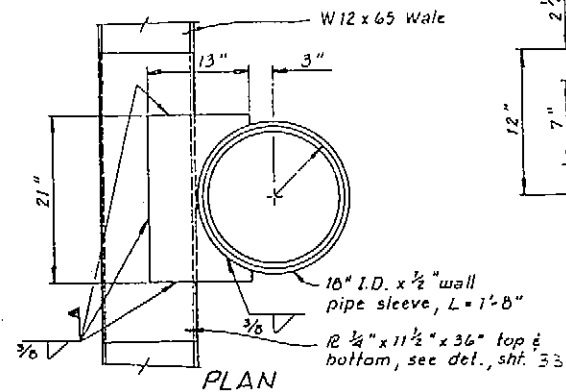
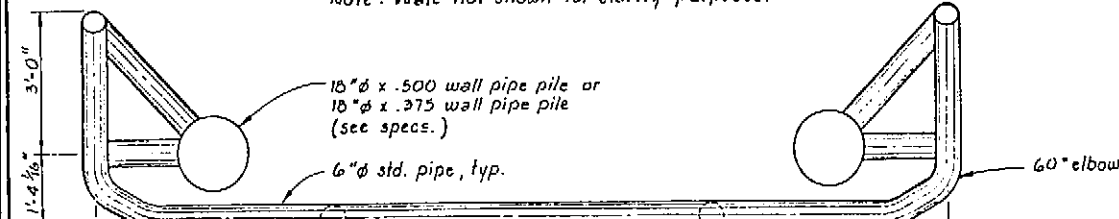
PETERSBURG DAMAGED DOLPHIN REPAIR

Details not shown, see contract Plans

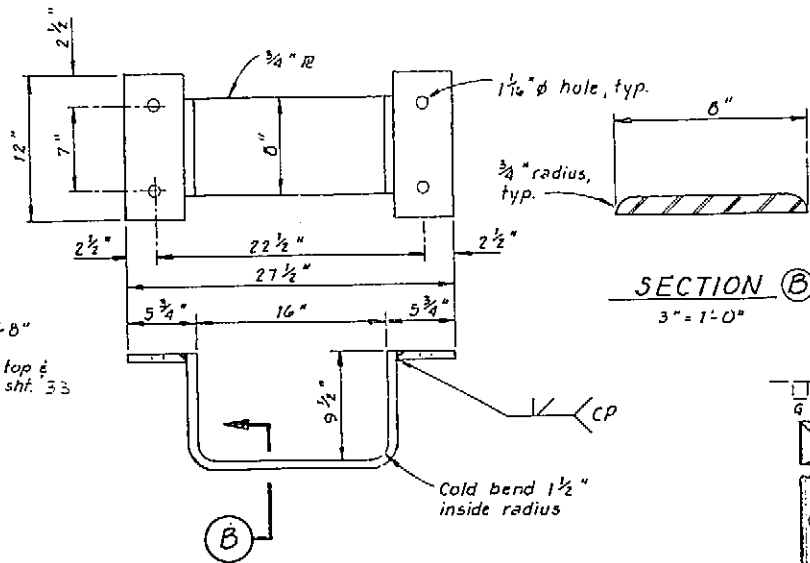
Scale 1/2" = 1'-0"



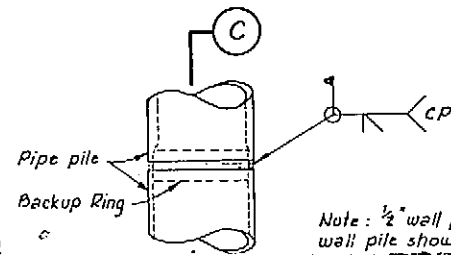
Note: Wale not shown for clarity purposes.



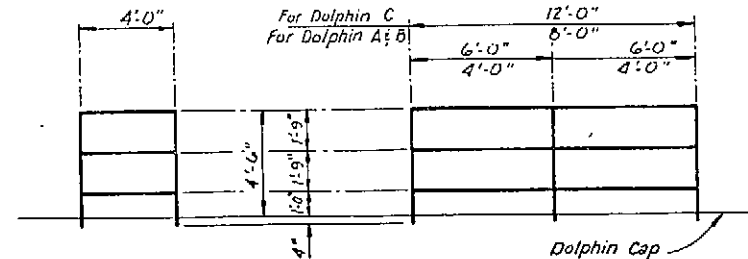
PIPE SLEEVE DETAIL
1" x 1'-0"



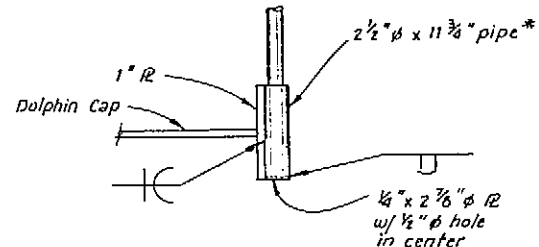
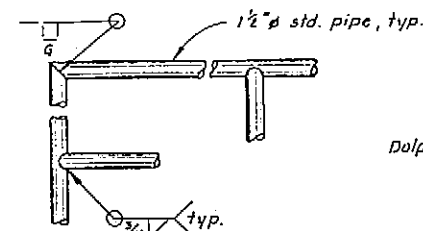
FENDER RETAINING BAR
1 1/2" x 1'-0"



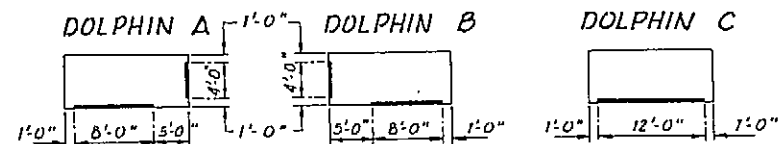
Note: 1/2" wall pile to 3/8" wall pile shown. See sect. C



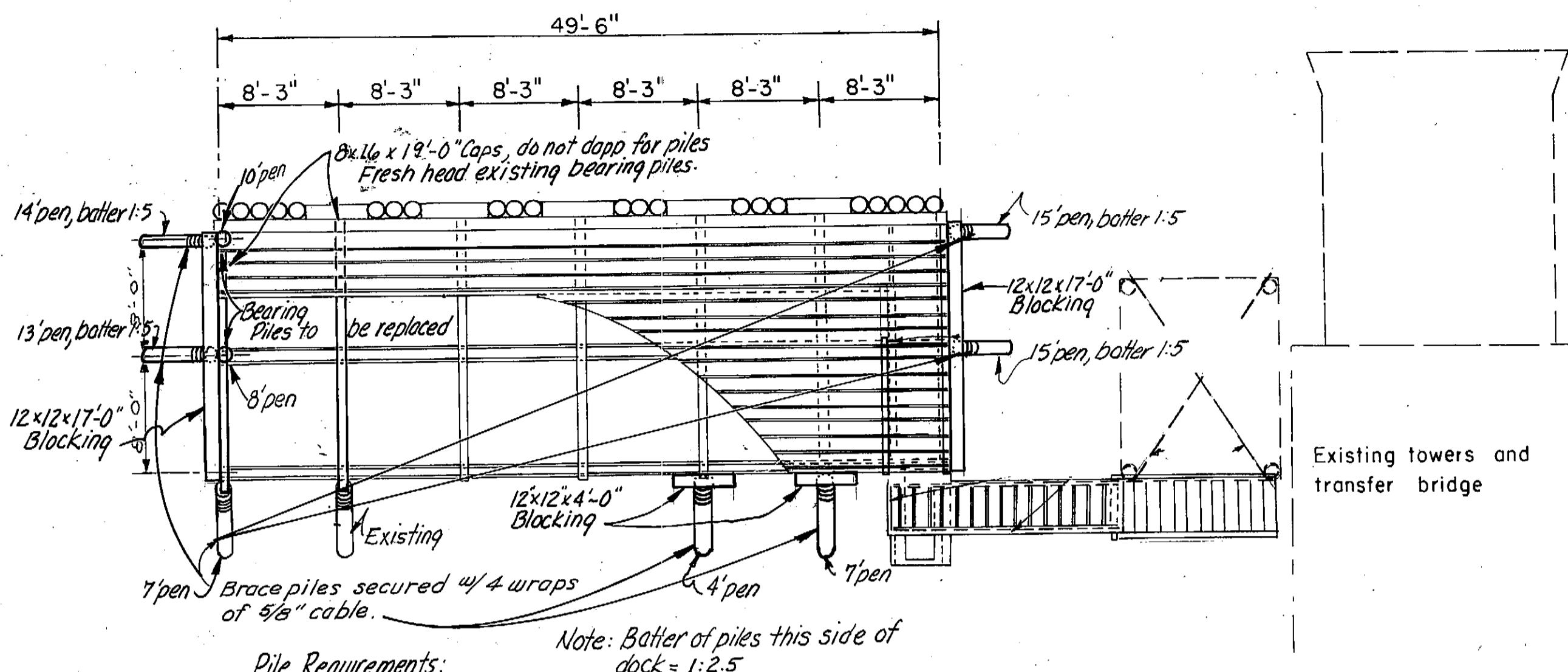
* 2 1/2" ϕ x 5 3/8" pipe for 4'-0" sections of handrail.



HANDRAIL SUPPORT DETAIL
1" x 1'-0"



HANDRAIL CONSTRUCTION DETAILS

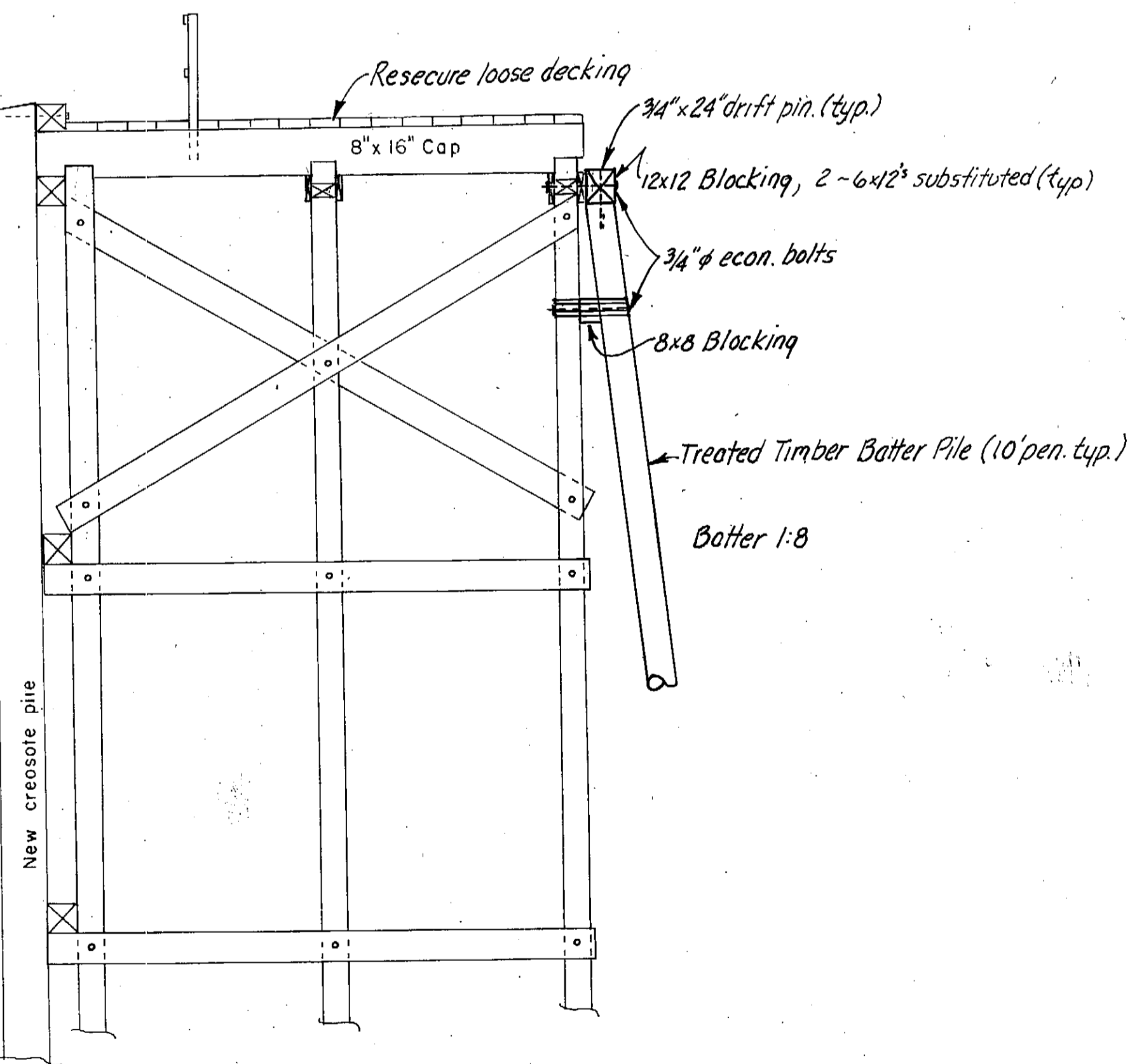


Pile Requirements:

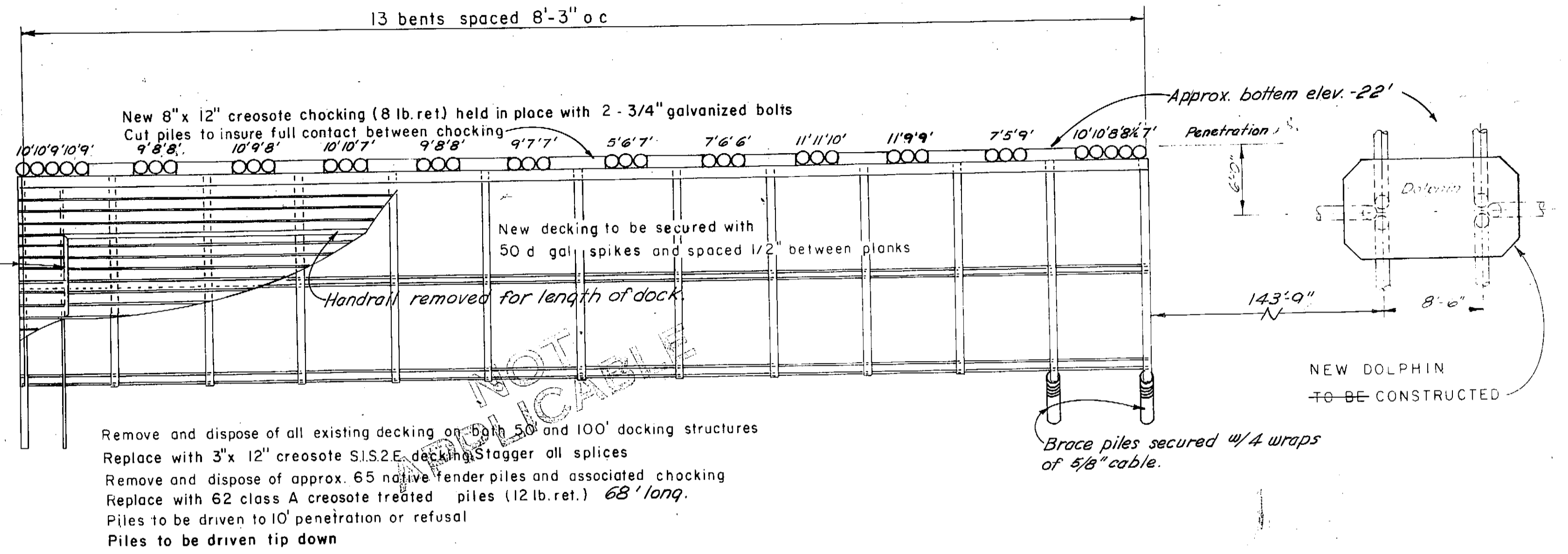
Bearing - 10' pen.
Batter - 10' pen.

Note: Piles showing less than 10' pen. were accepted based on bearing (see pile driving summary)

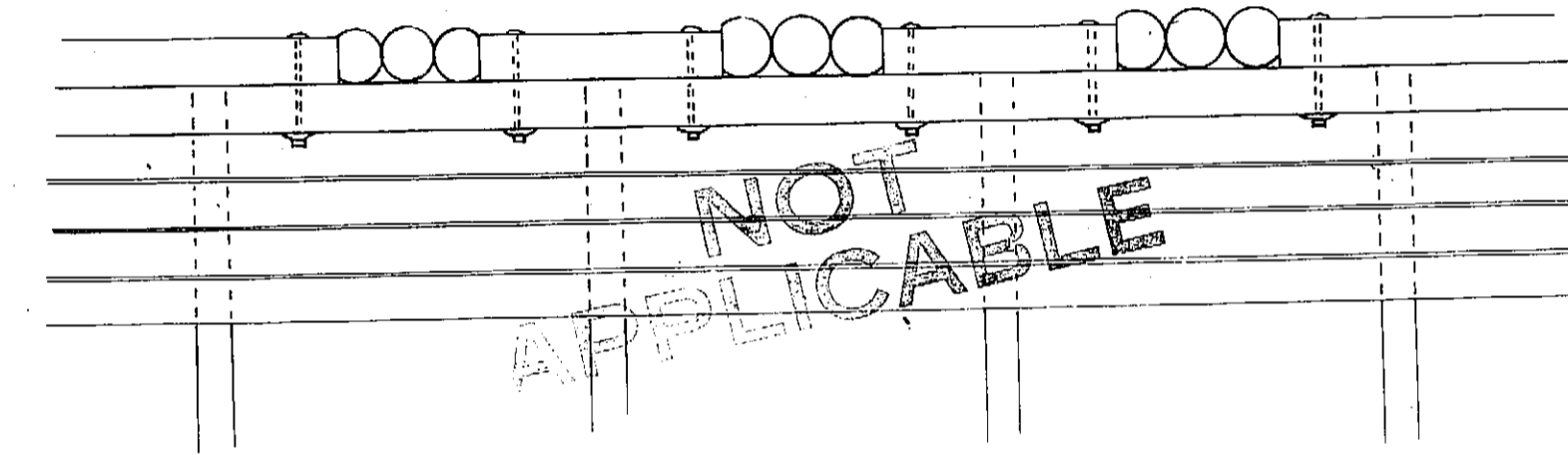
Note: 12x12 blocking on backside of dock to be secured w/ min. 4 bolts; max. spacing 1'-6" (only 3 used on short blocks). 12x12 blocking to be secured @ bearing pile contact w/ min. of two bolts. (See details.) Caps to be secured w/ 3/4" x 32" drift pins, one per contact. All bolts & hardware to be galvanized.



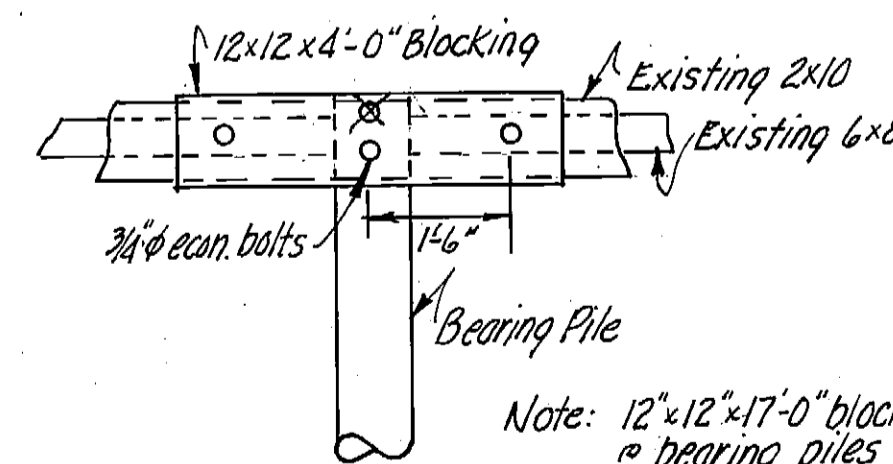
TYPICAL EXISTING BENT
SCALE 1/4" = 1'-0"



PLAN
SCALE 1/8" = 1'-0"



CHOCKING DETAIL
SCALE 1/4" = 1'-0"



BLOCKING CONN. DETAIL
1/2" = 1'-0"

As Built 4/14/78 JAL

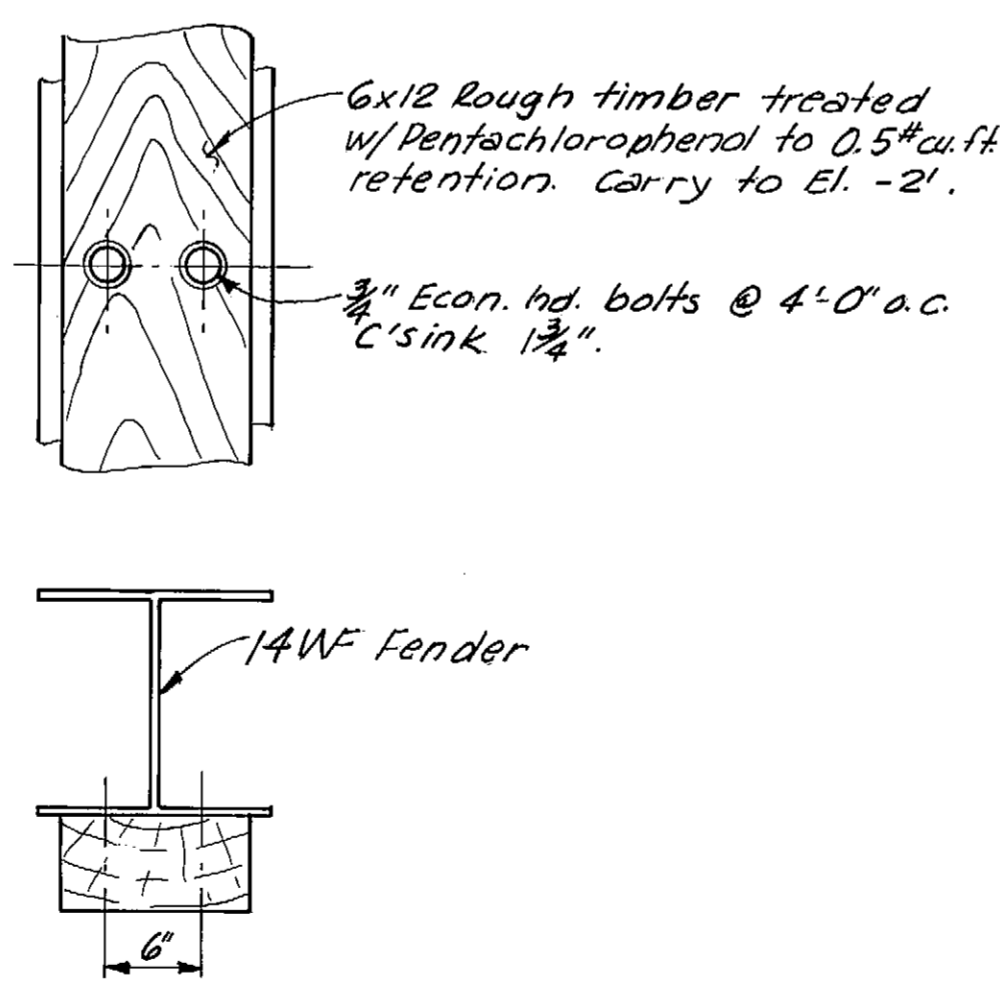
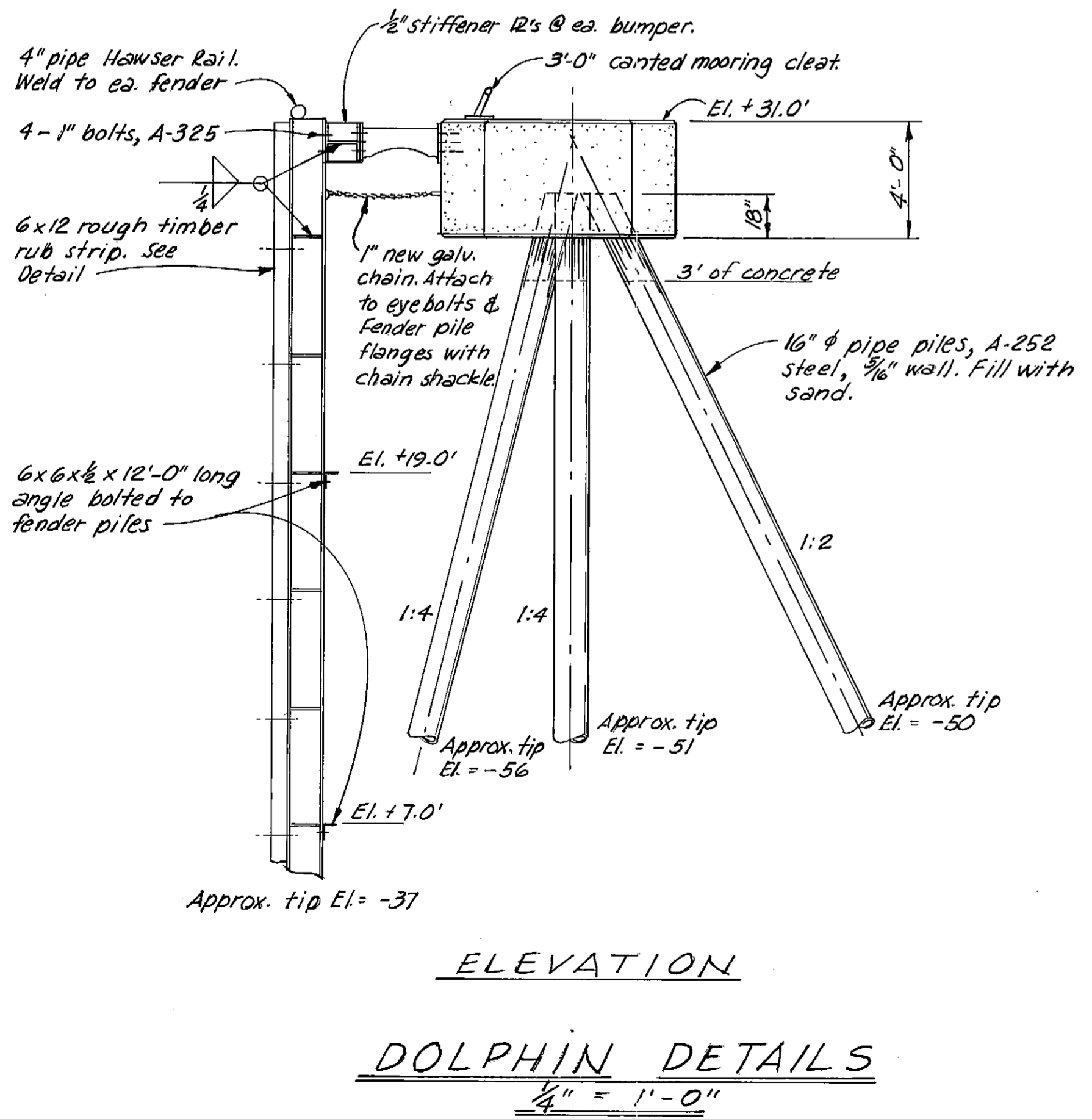
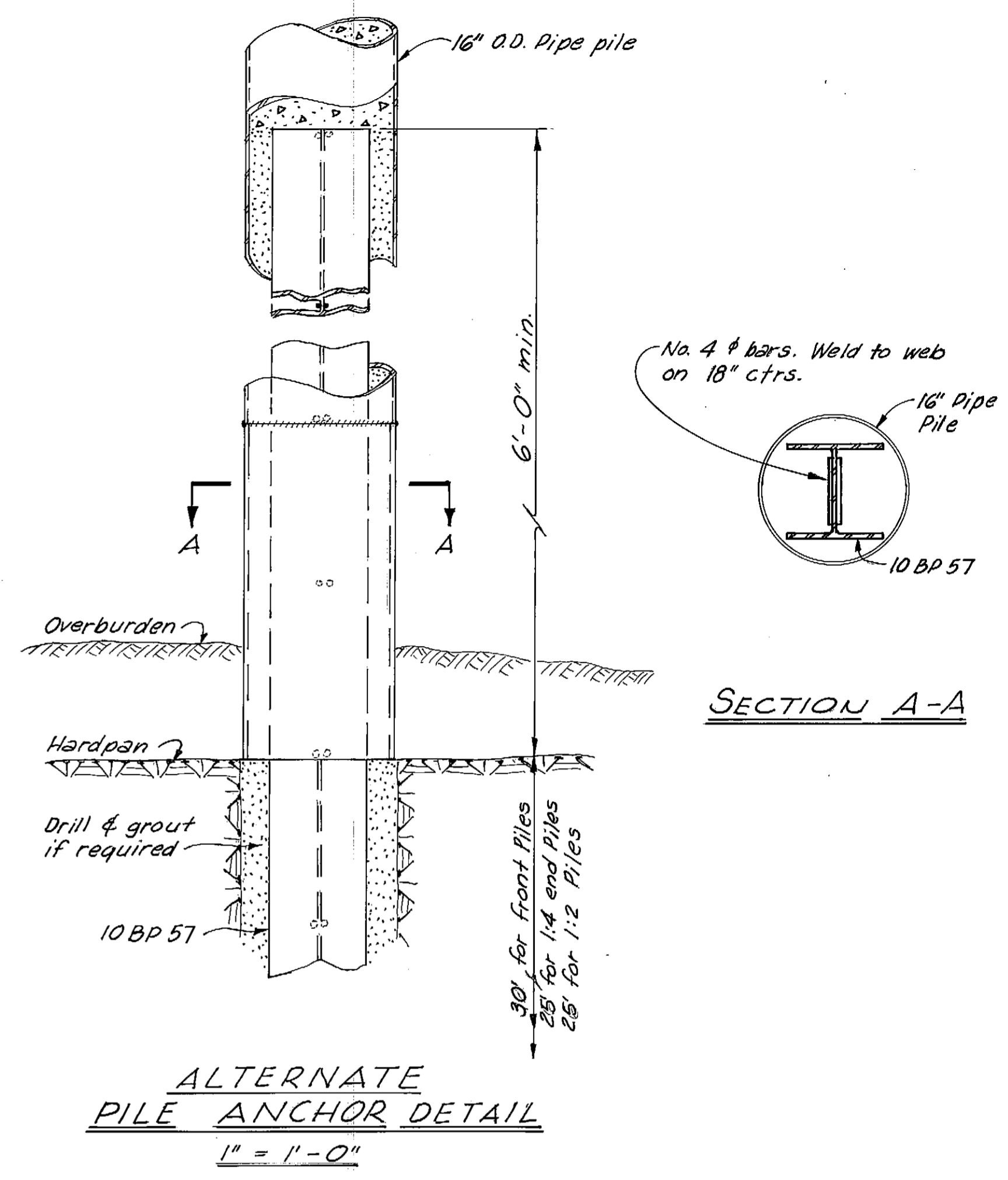
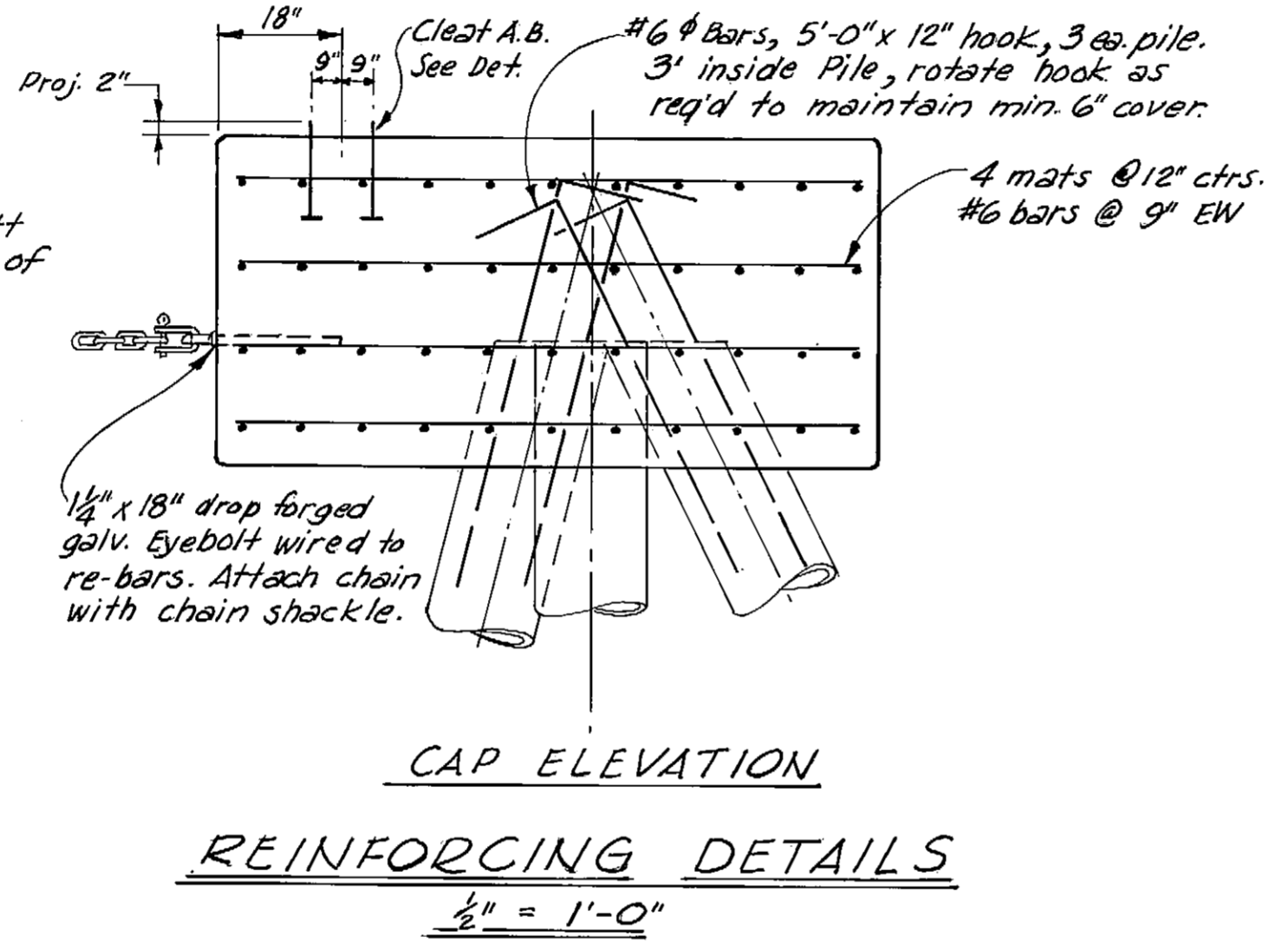
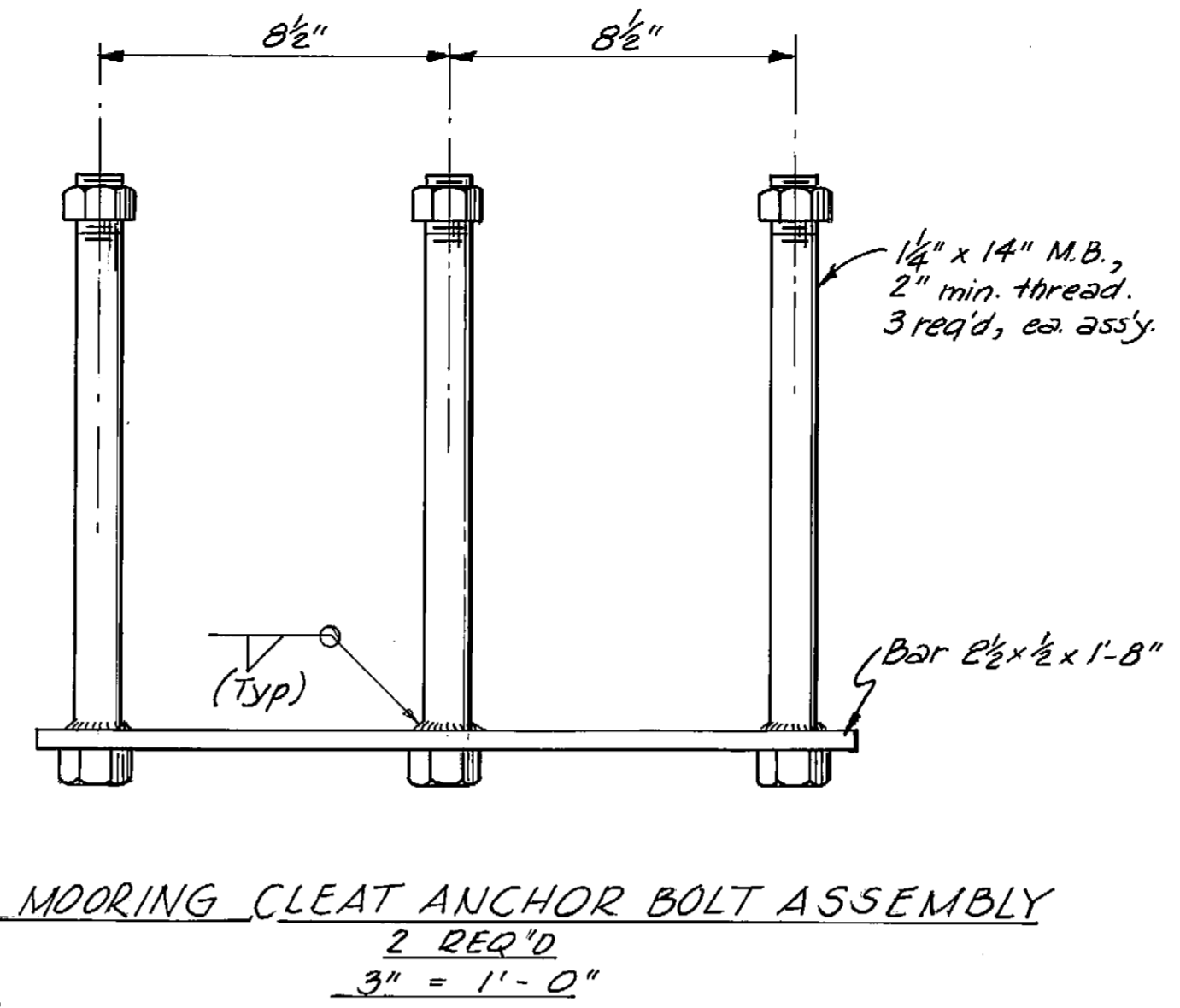
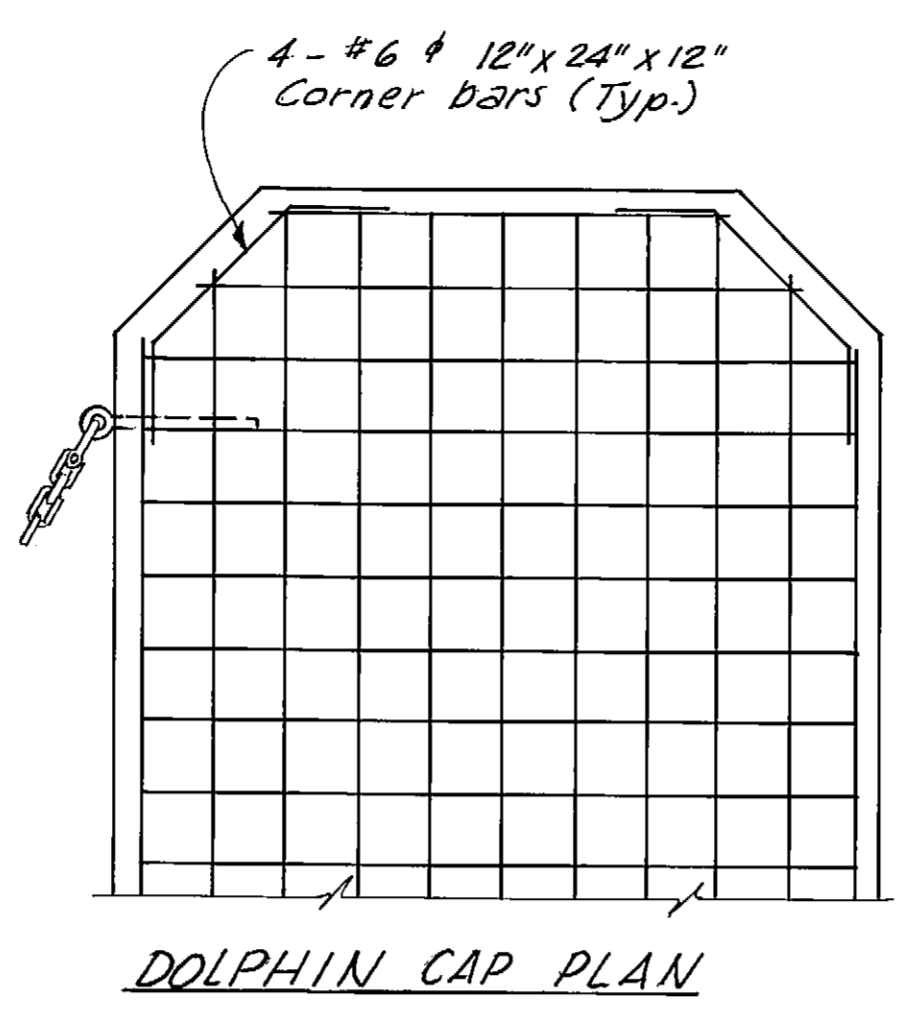
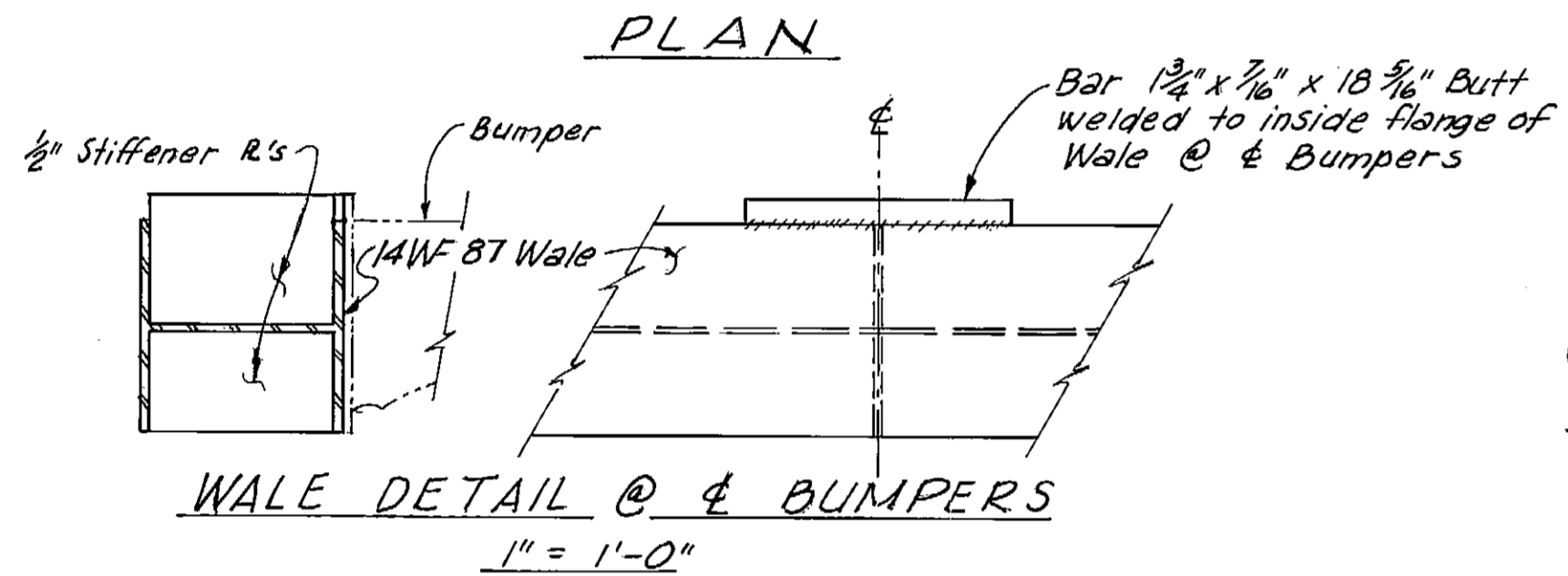
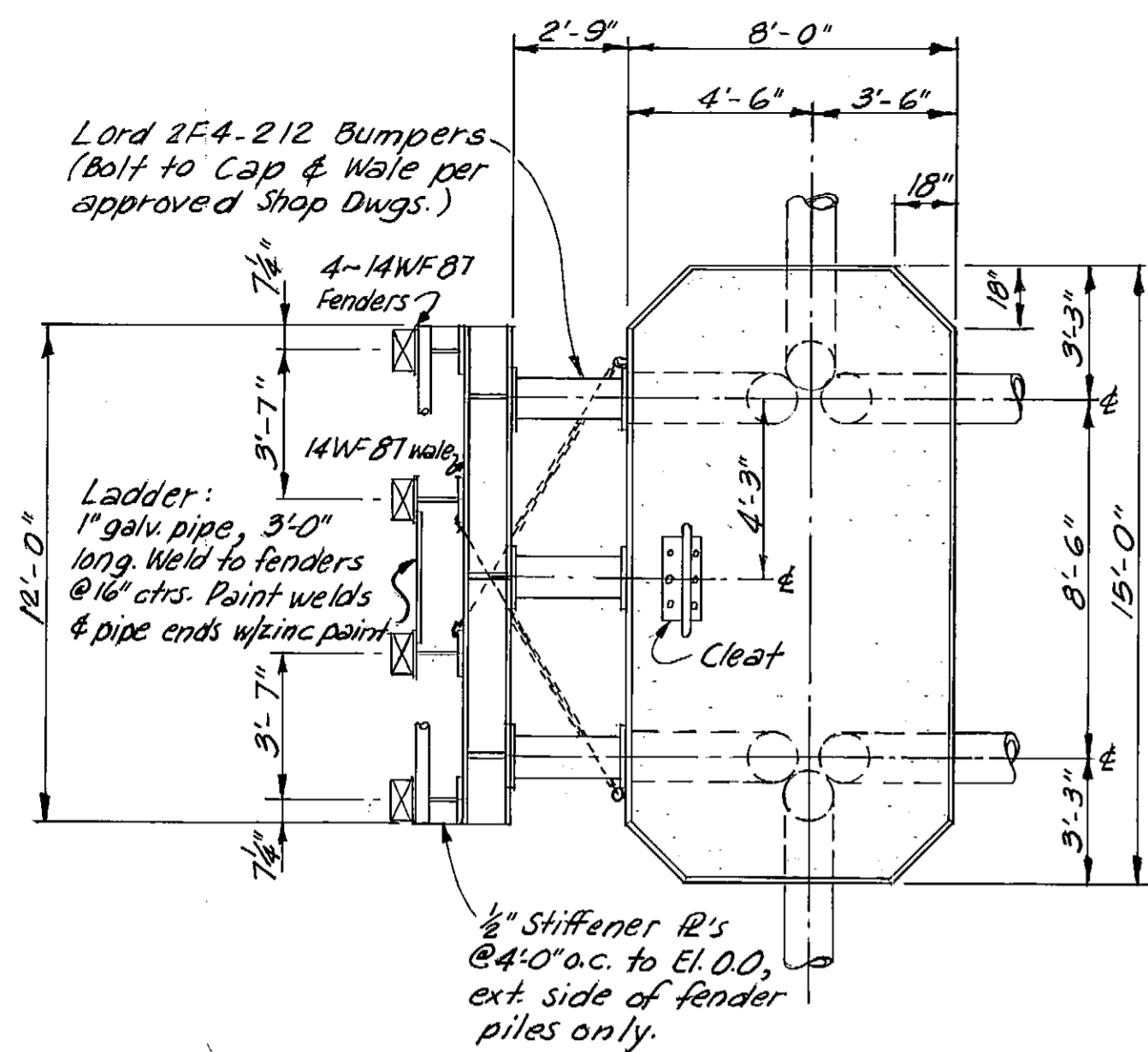
DEPARTMENT OF PUBLIC WORKS
WATER UTILITIES DIVISION

**DOCK REPAIRS
PETERSBURG FERRY TERMINAL**

As shown
4/3/78

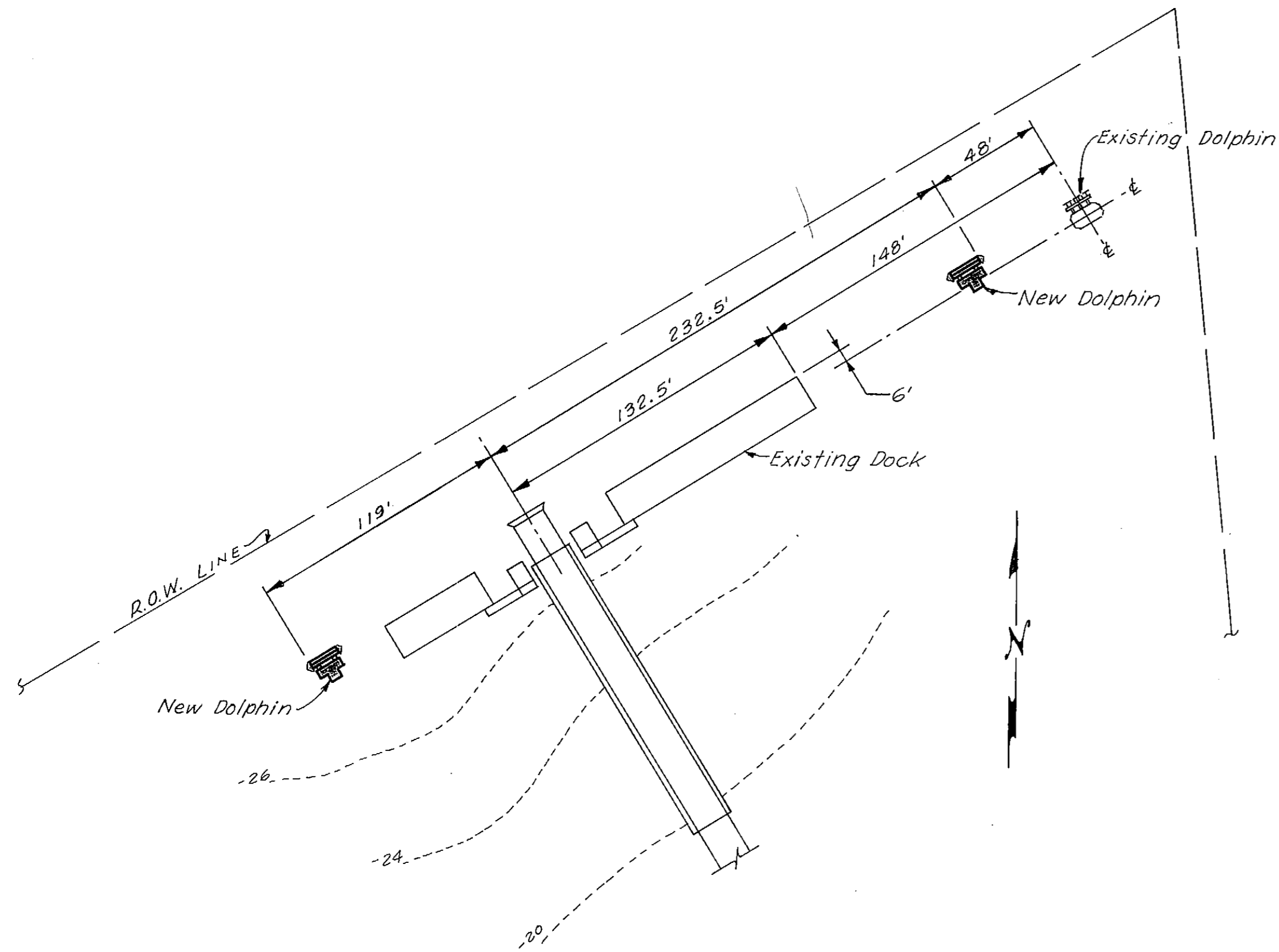
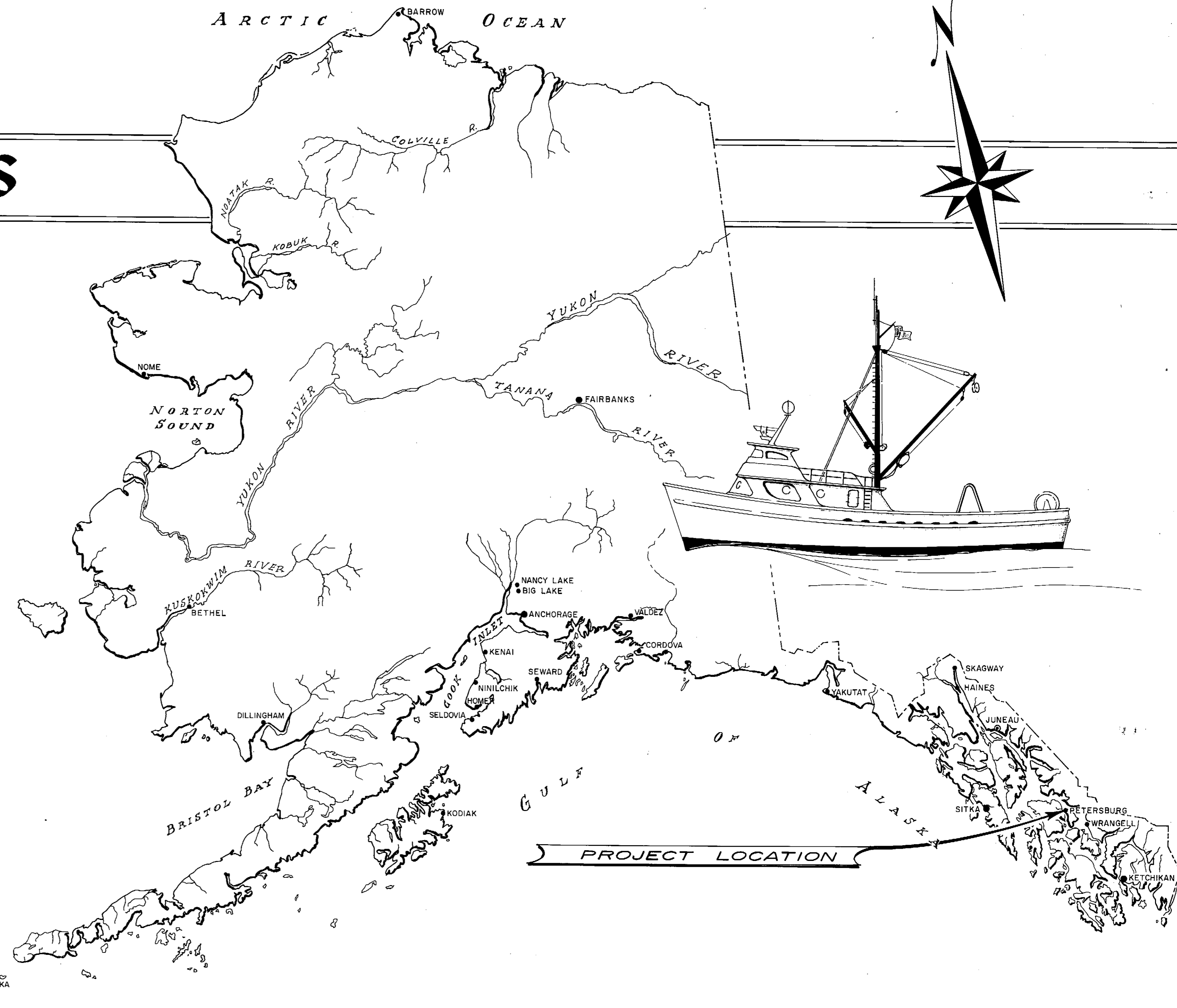
APPROVED: **Don Statter**
DIRECTOR

SHEET 1 OF 1



DO NOT SCALE THIS DRAWING - USE DIMENSIONS		
STATE OF ALASKA DEPARTMENT OF PUBLIC WORKS DIVISION OF WATER AND HARBORS		
BREASTING DOLPHIN PETERSBURG FERRY TERMINAL		
SCALE As shown	SURVEYED	APPROVED
DESIGNED -	DRAWN JET	Don Statter DIRECTOR
CHECKED DW	DATE 6-7-71	
PROJECT NUMBER	SHEET 1 OF 1	

PETERSBURG FERRY TERMINAL DOLPHINS PROJECT NO. 6-75157



PROJECT LAYOUT

1" = 50'

WORK SUMMARY

The project consists of constructing two new steel pile, torsion breasting dolphins; reconstructing the fender system for the existing steel pile concrete cap dolphin, and installing interconnecting catwalks between dolphins and ferry dock.

AS BUILT
4/76

STATE OF ALASKA DEPARTMENT OF PUBLIC WORKS
DIVISION OF WATER & HARBORS

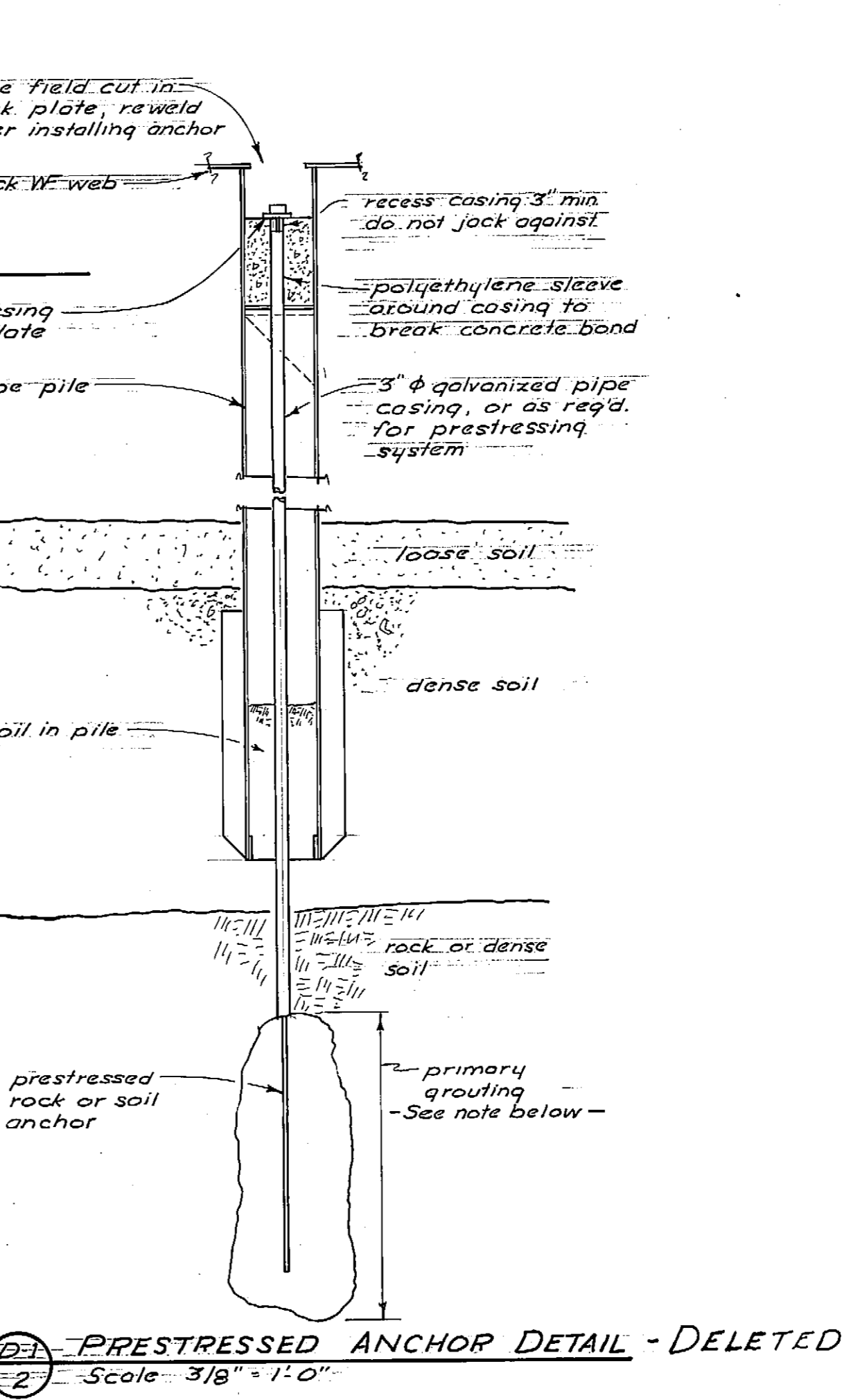
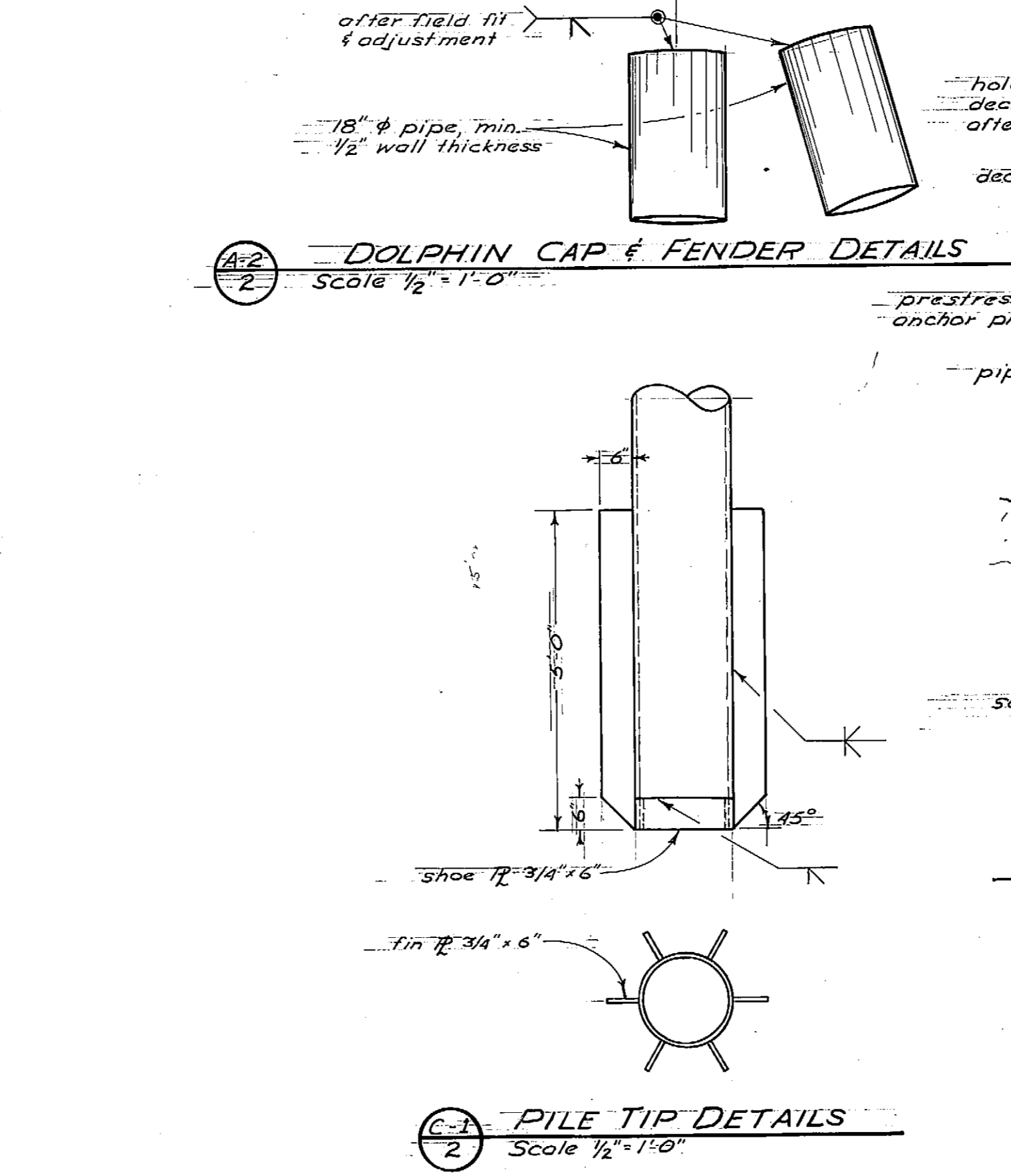
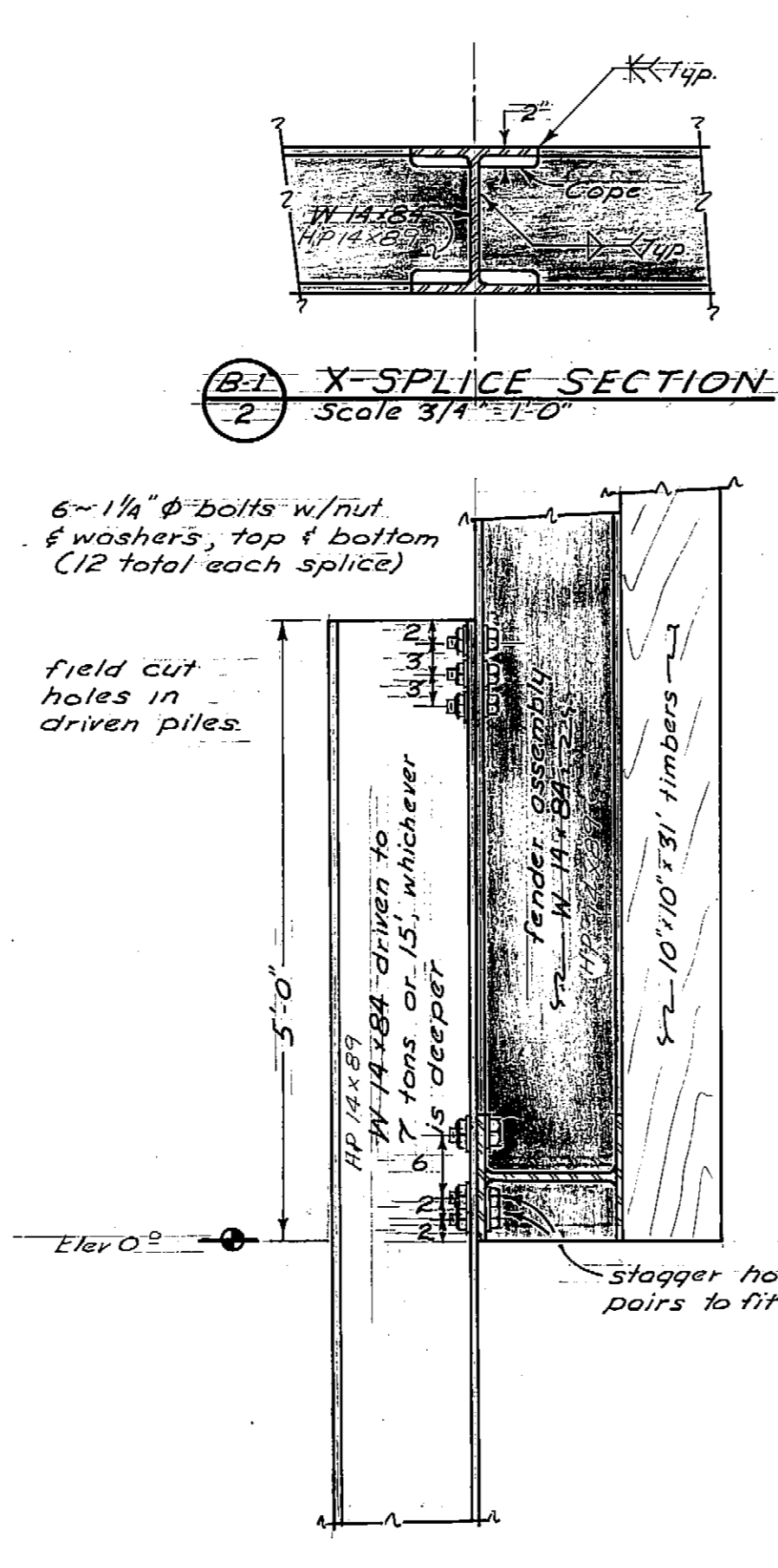
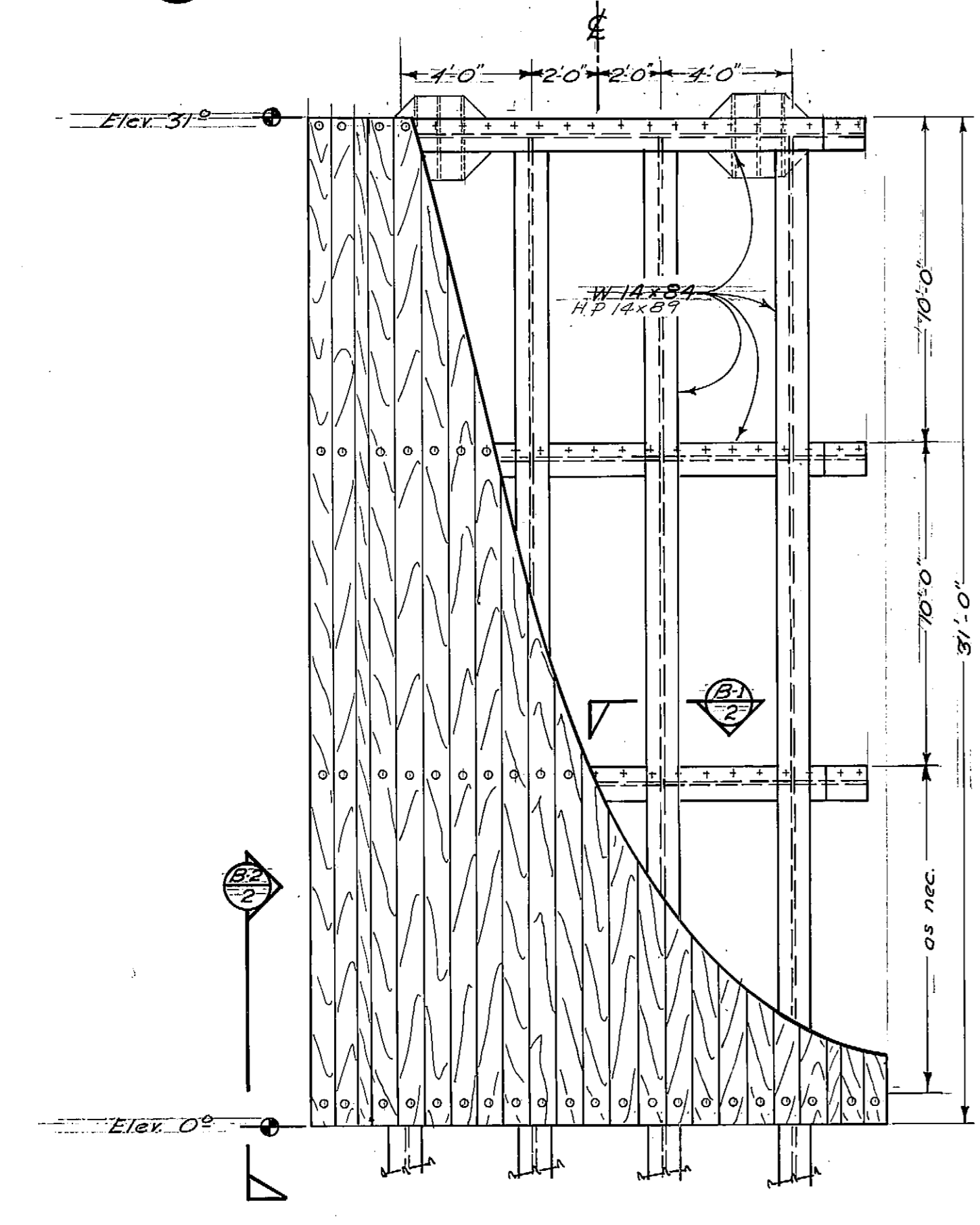
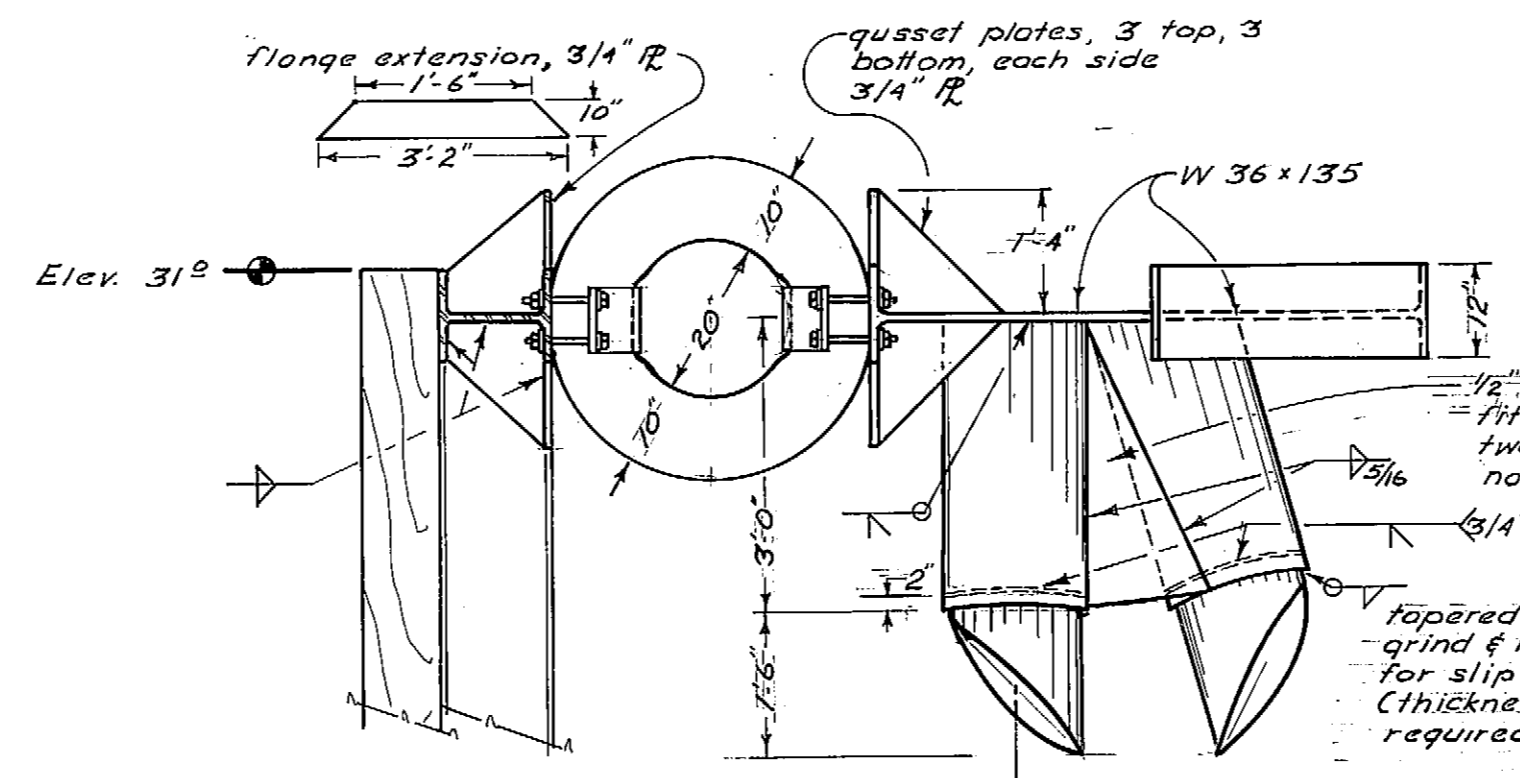
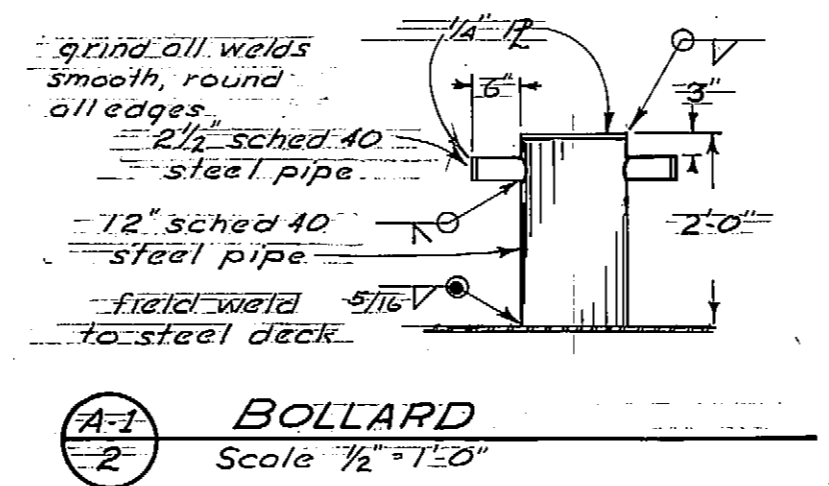
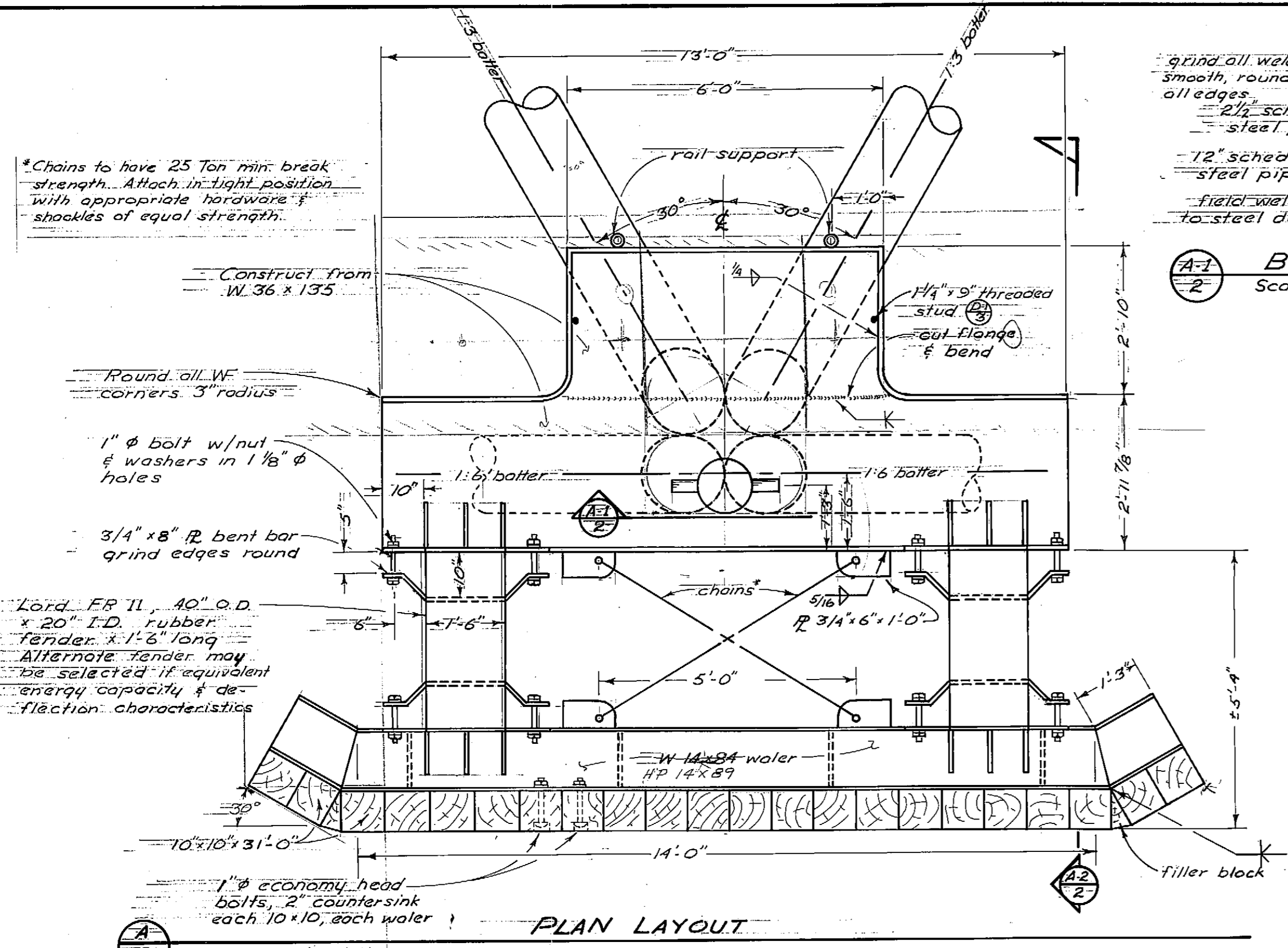
INDEX TO SHEETS	
1	TITLE & PROJECT LAYOUT
2	TORSION DOLPHIN DETAILS
3	CATWALK DETAILS & EXISTING DOLPHIN FENDER REPLACEMENT
4	DOLPHIN RECONSTRUCTION - AS BUILT
5	BREASTING DOLPHIN - AS BUILT
6	DOCK REPAIRS - AS BUILT

APPROVED

DIRECTOR

DATE

SHEET / OF 6



Dolphin Pile design load (tons)	Estimated Pile elevations	
	downward	uplift
Vertical pile	45	45
Batter pile	45	45

** Minimum subsurface soils information is available at this site. Elevations shown may not be of adequate accuracy for ordering piling. The Contractor is advised to drive a test pile if greater accuracy is desired.

Note: Pressure grouting may be required to form adequate anchors in weaker materials.

Subsurface conditions shown are schematic only and are not intended to represent actual conditions at this site.

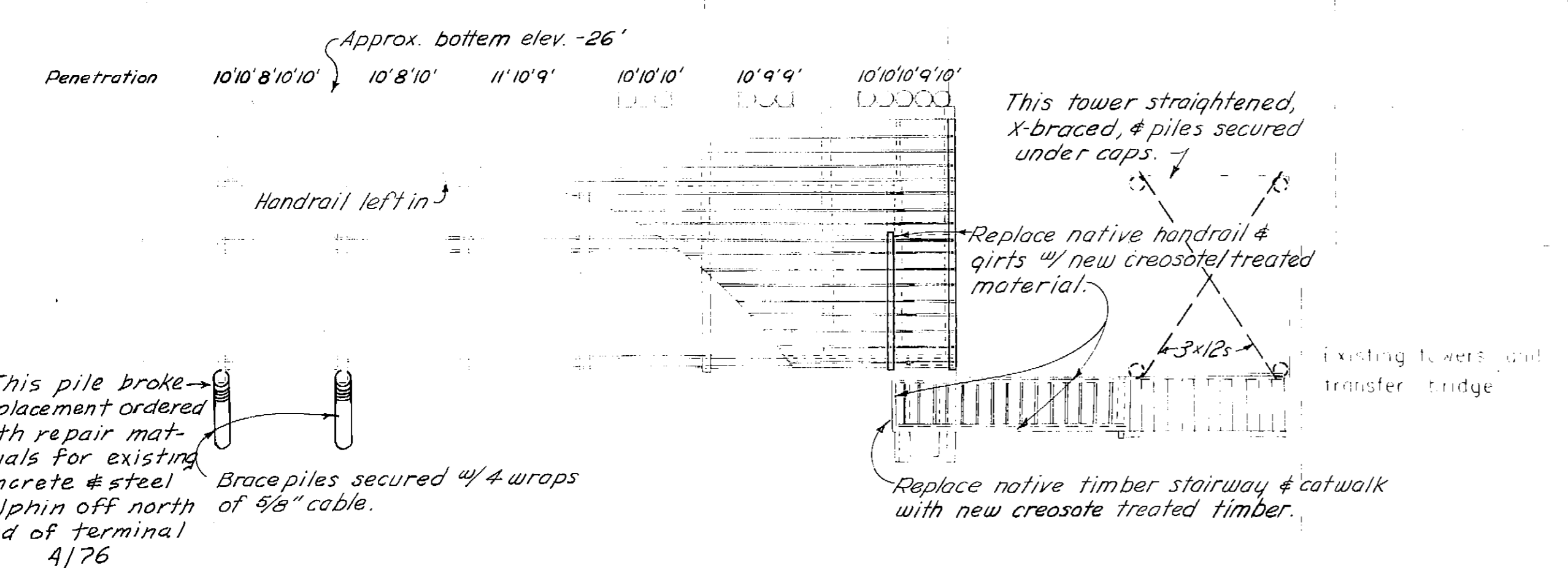
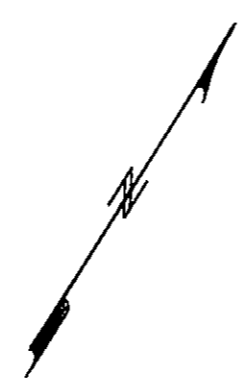


As Built 12-76 #
Credit Note: Primary engineering, RFM Engineering Consultants, Inc. Anch.

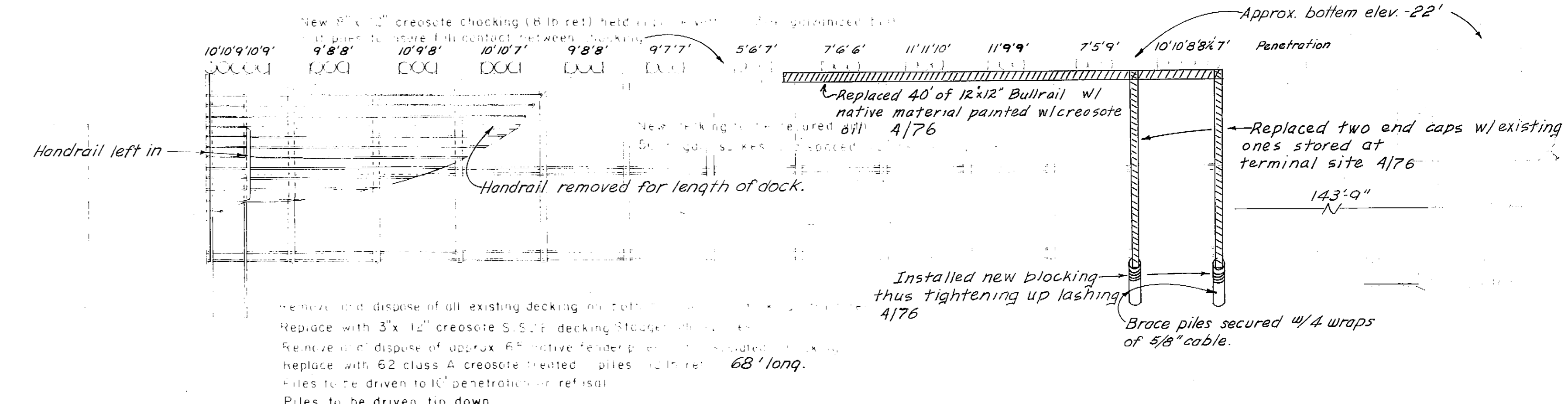
DO NOT SCALE THIS DRAWING - USE DIMENSIONS
STATE OF ALASKA
DEPARTMENT OF PUBLIC WORKS
DIVISION OF WATER AND HARBORS

TORSION DOLPHIN DETAILS

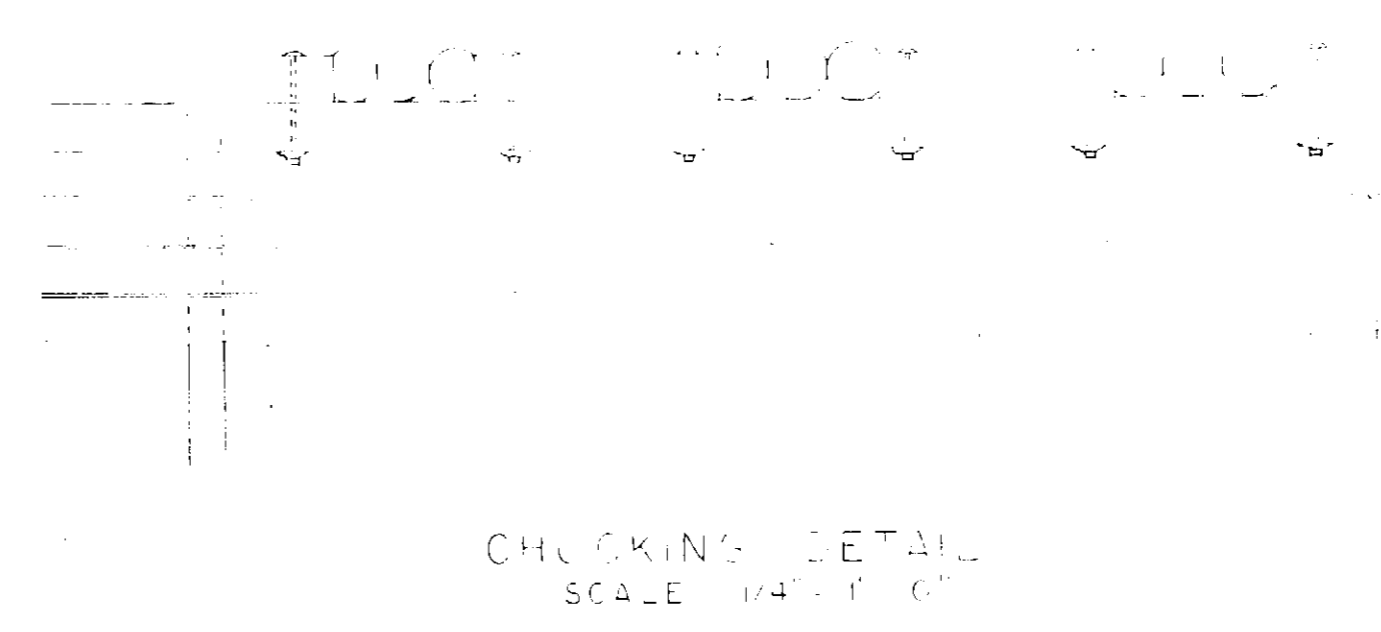
SCALE As shown	SURVEYED	APPROVED
DESIGNED D.N.	DRAWN P.B.	Don Stotter
CHECKED G.B.	DATE Oct '75	DIRECTOR
PROJECT NUMBER 6-75157	SHEET 2 OF 6	



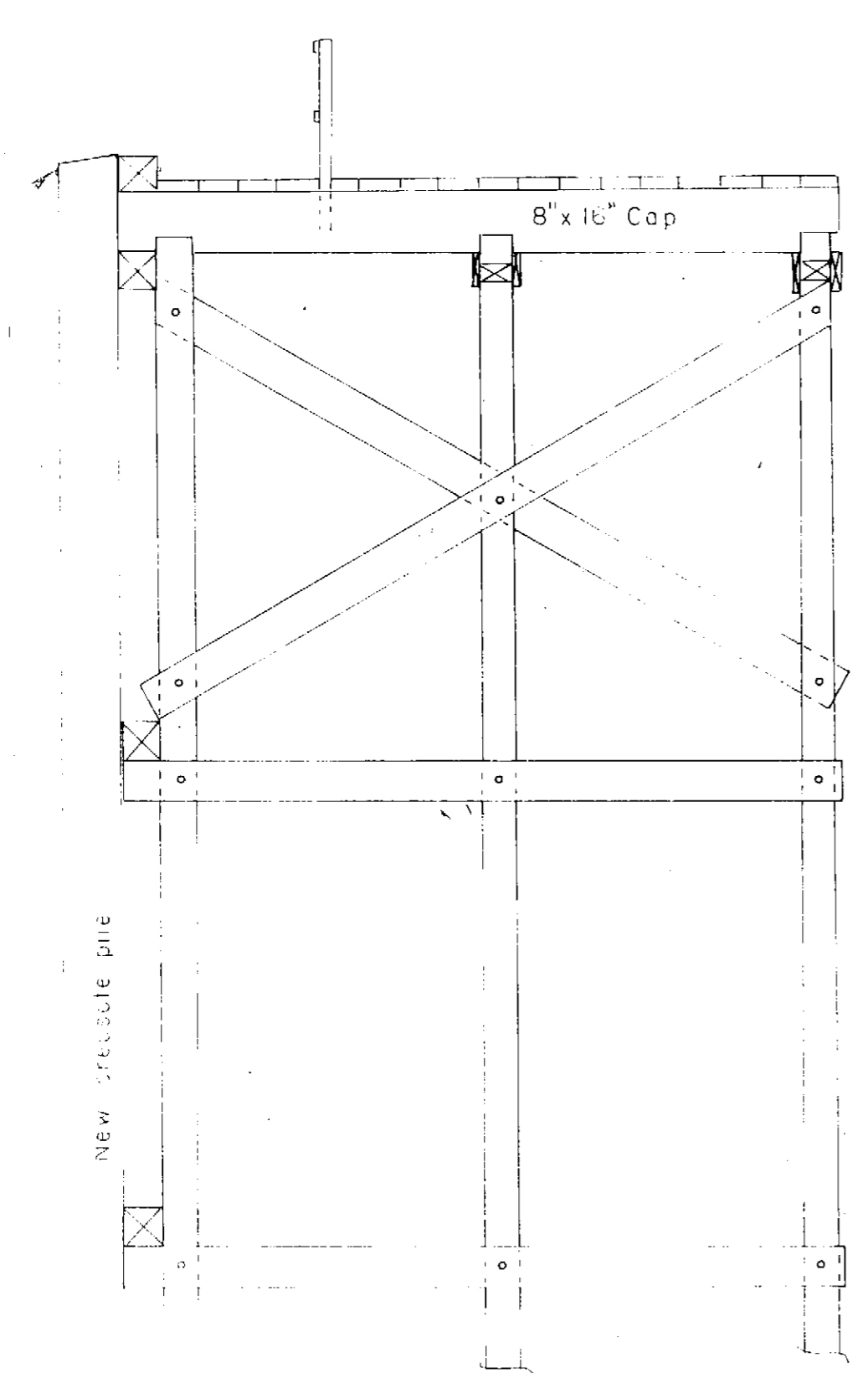
All counterweight cables replaced with new cables.
Transfer bridge lifting cable replaced 4/76



PLAN
SCALE 1/8" = 1'-0"



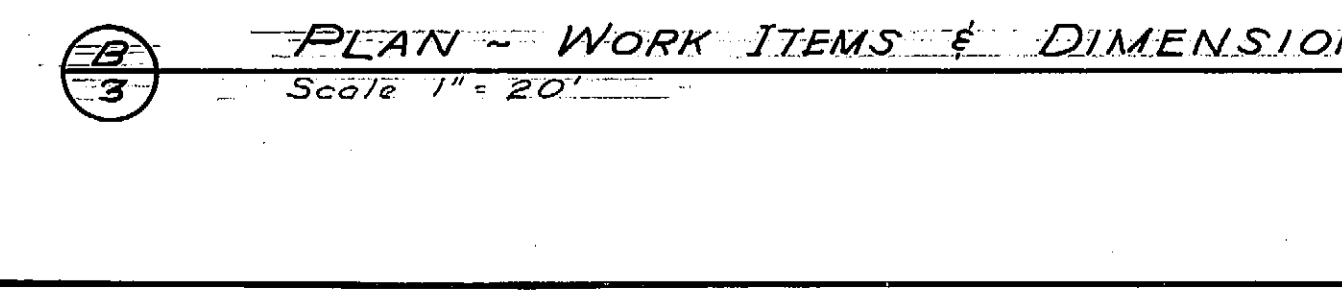
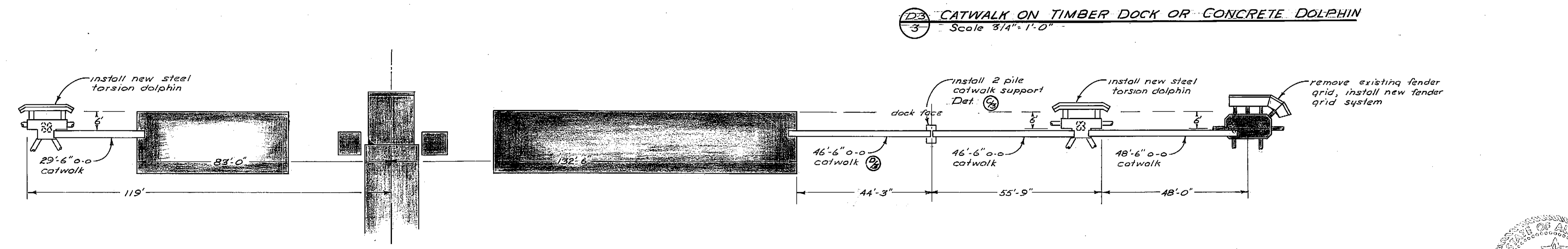
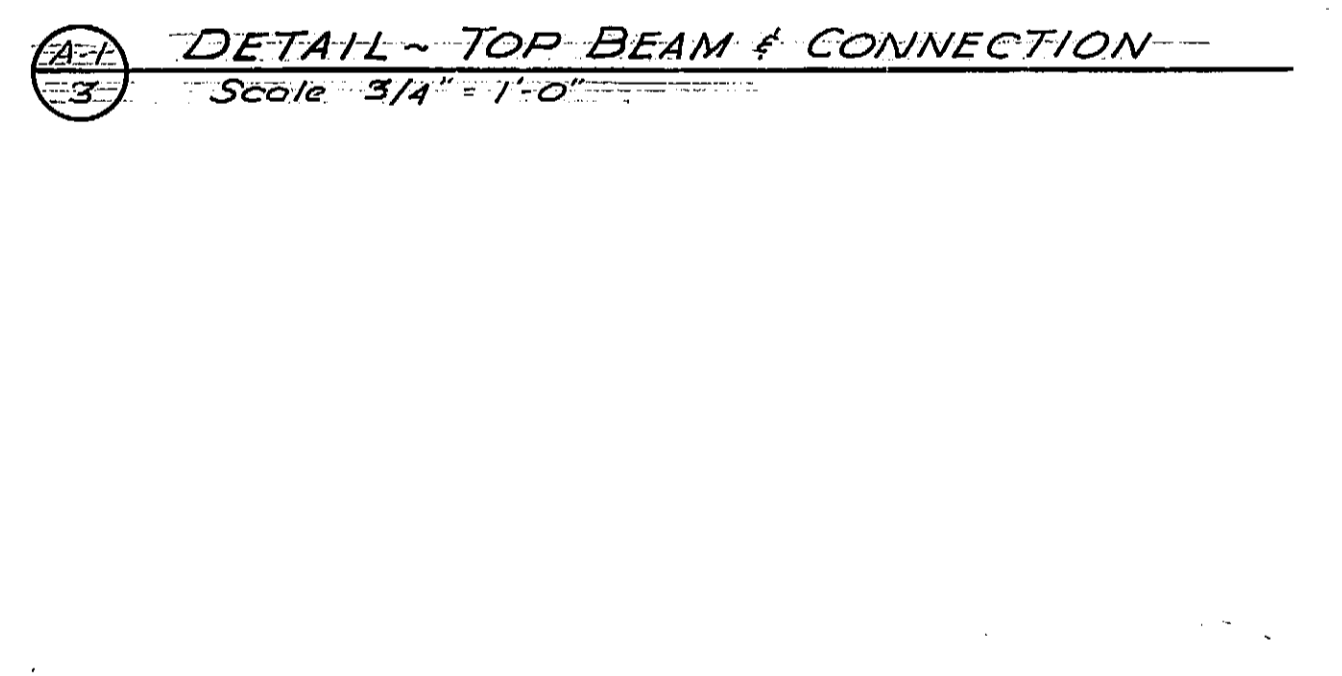
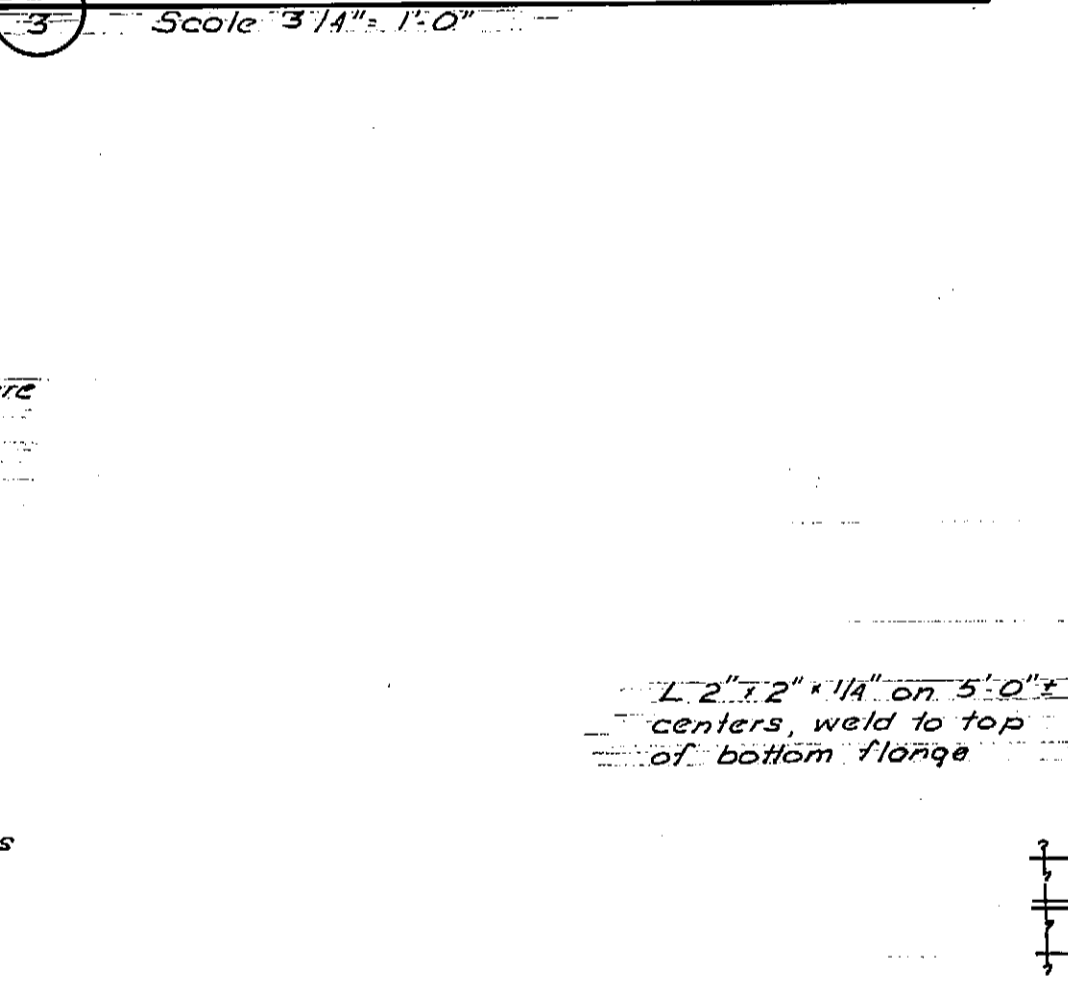
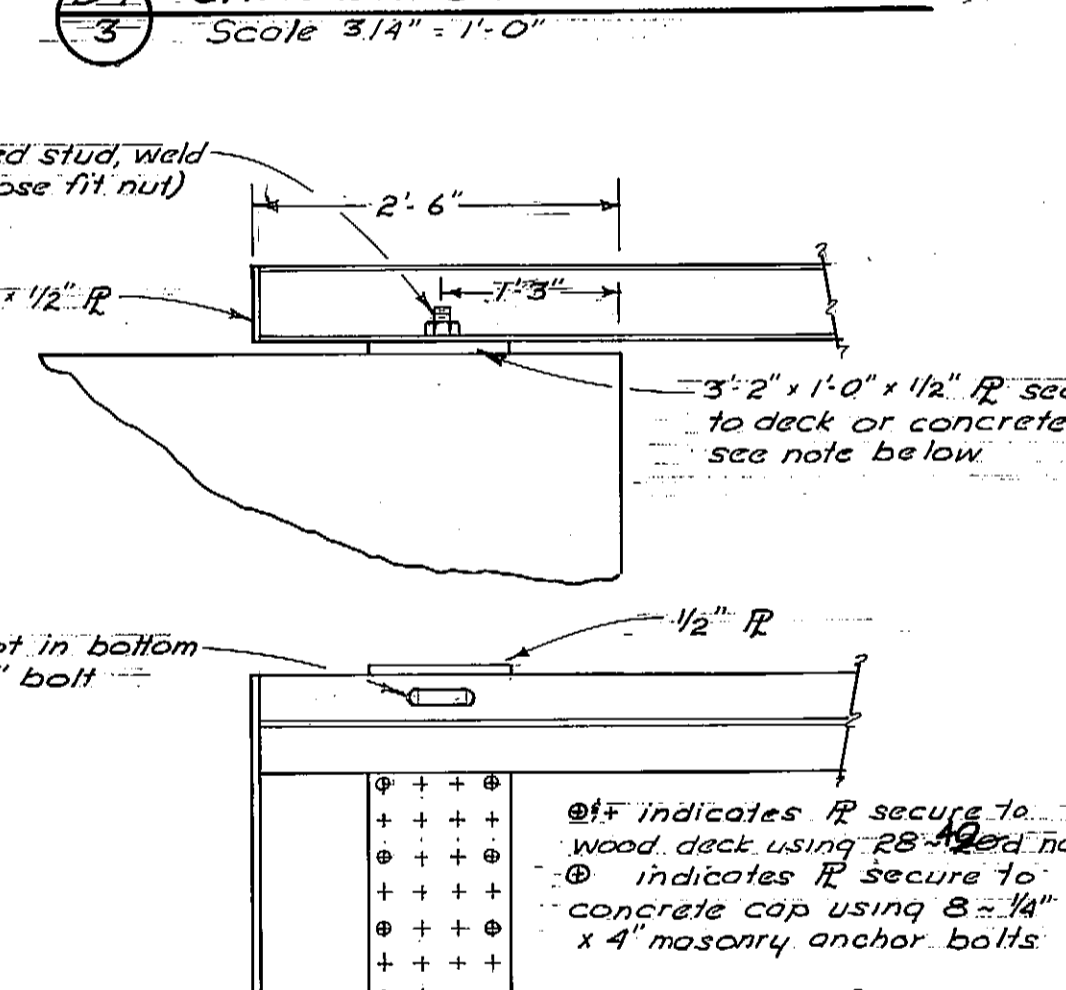
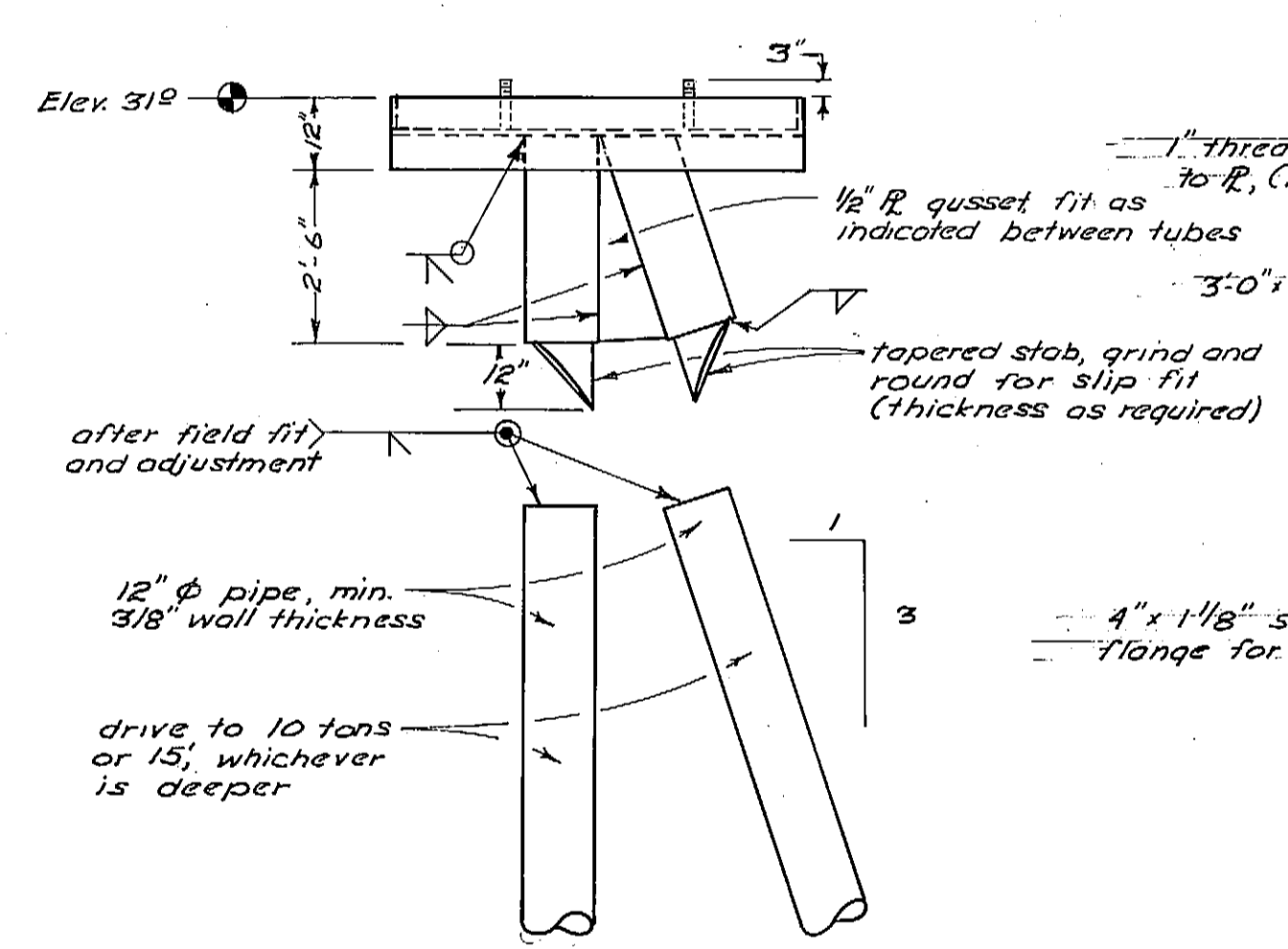
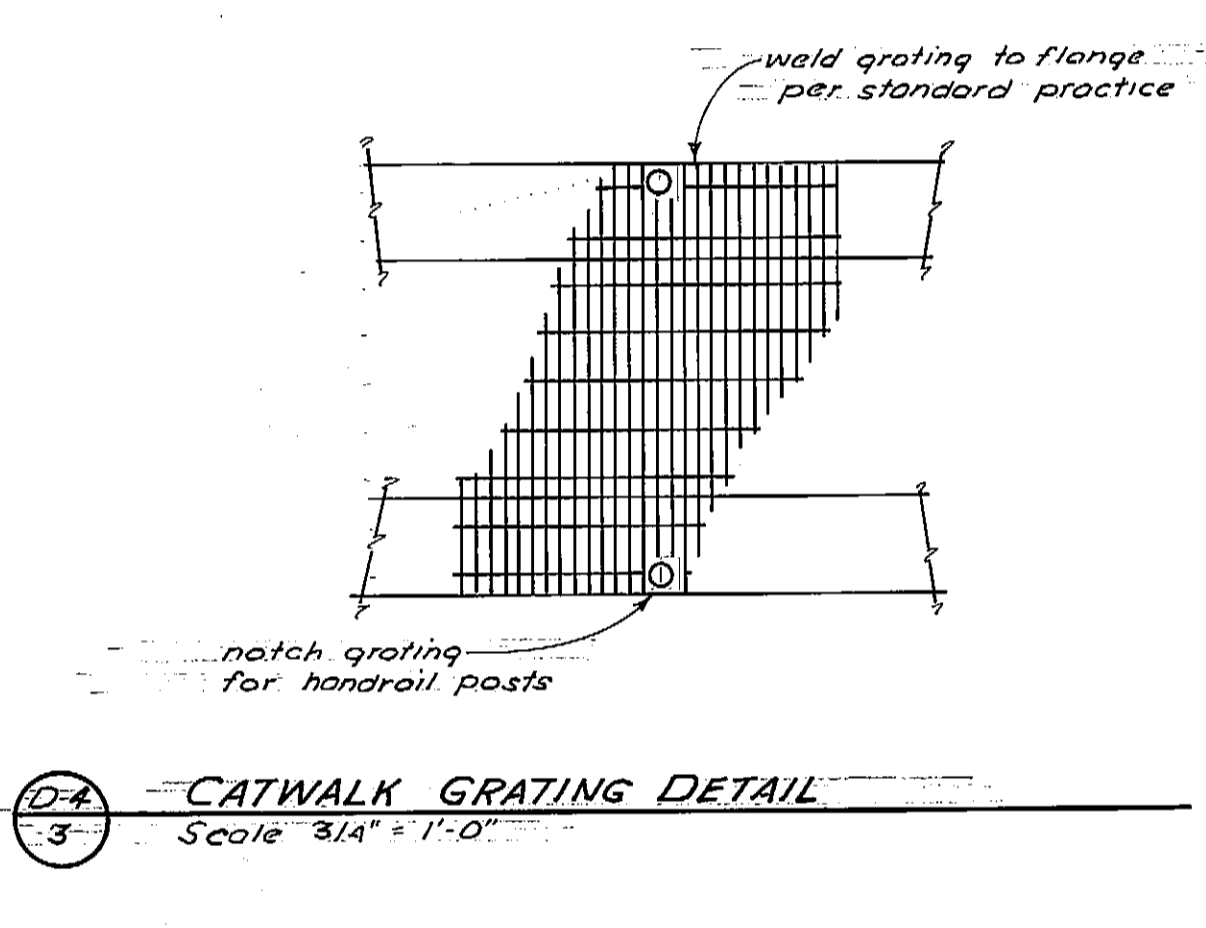
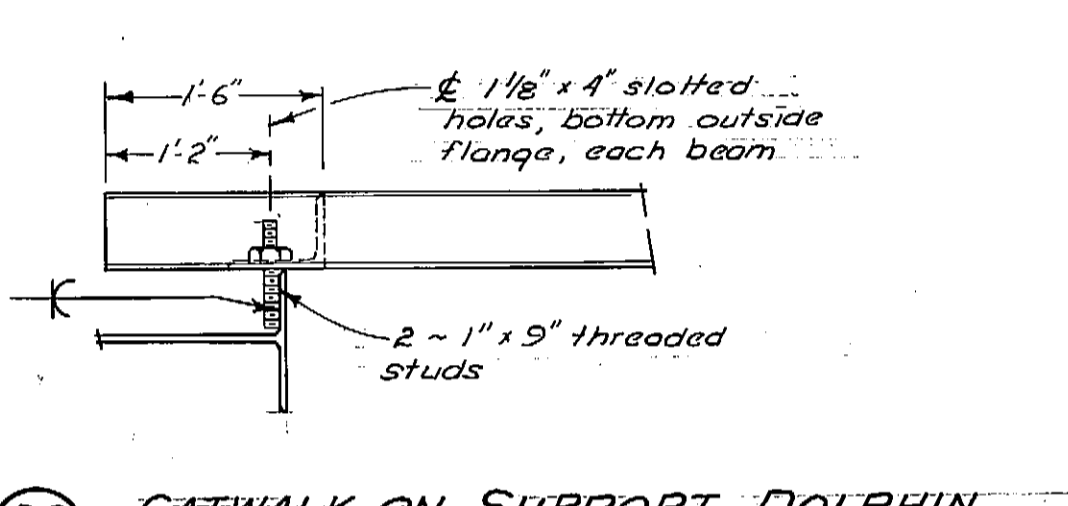
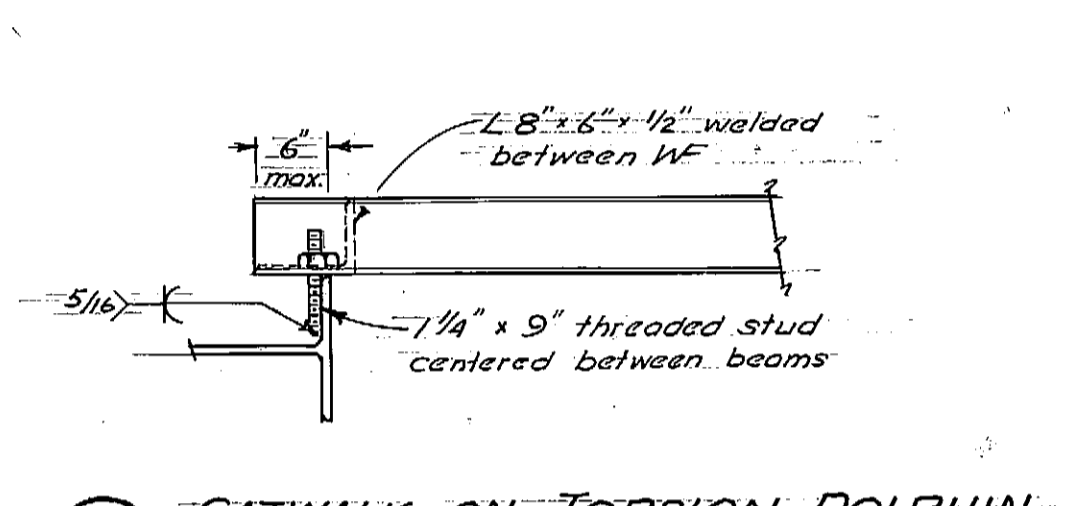
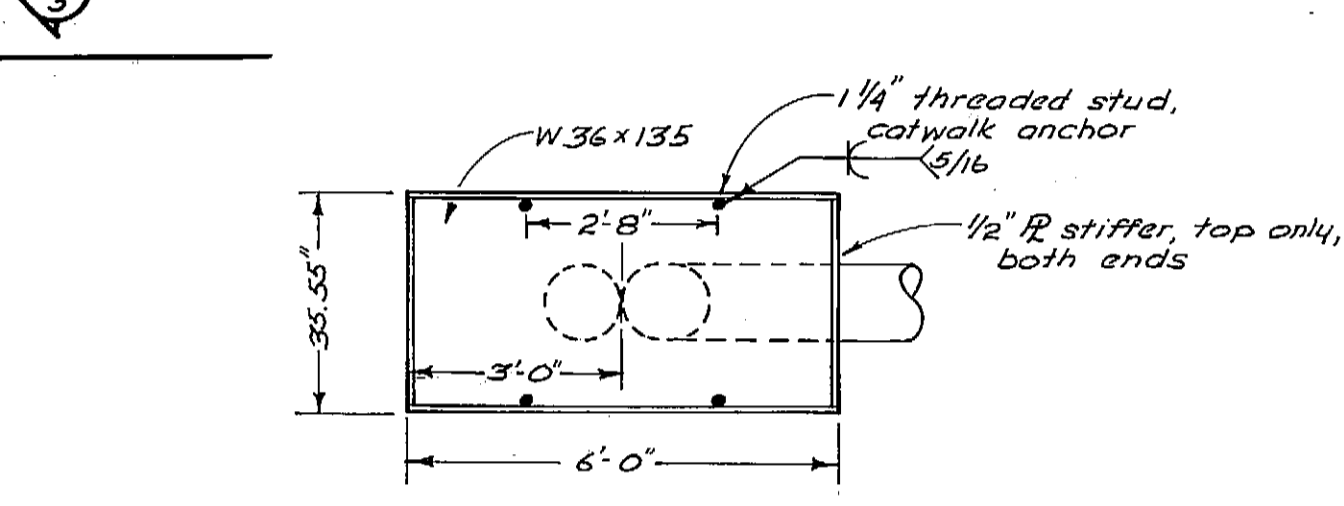
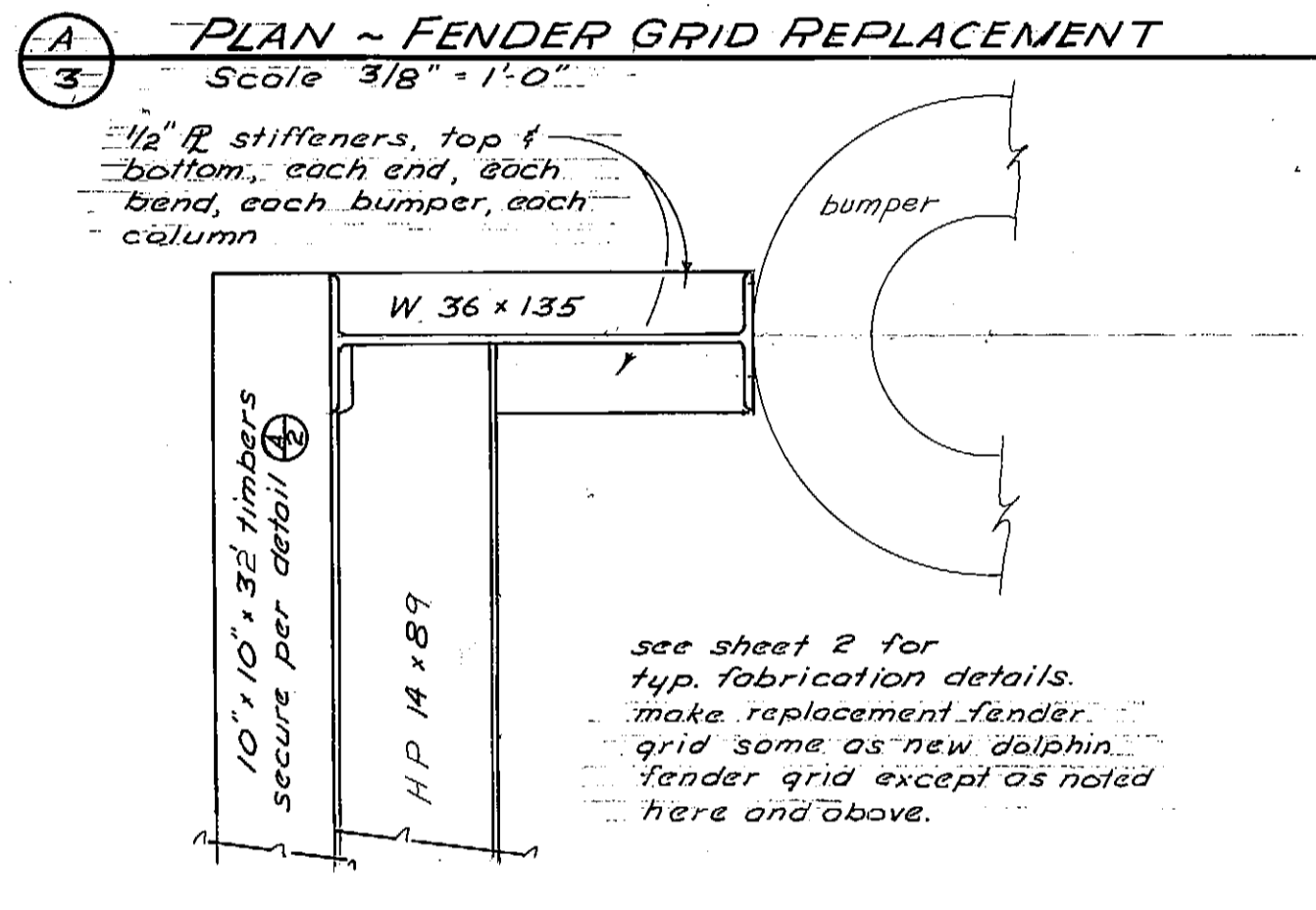
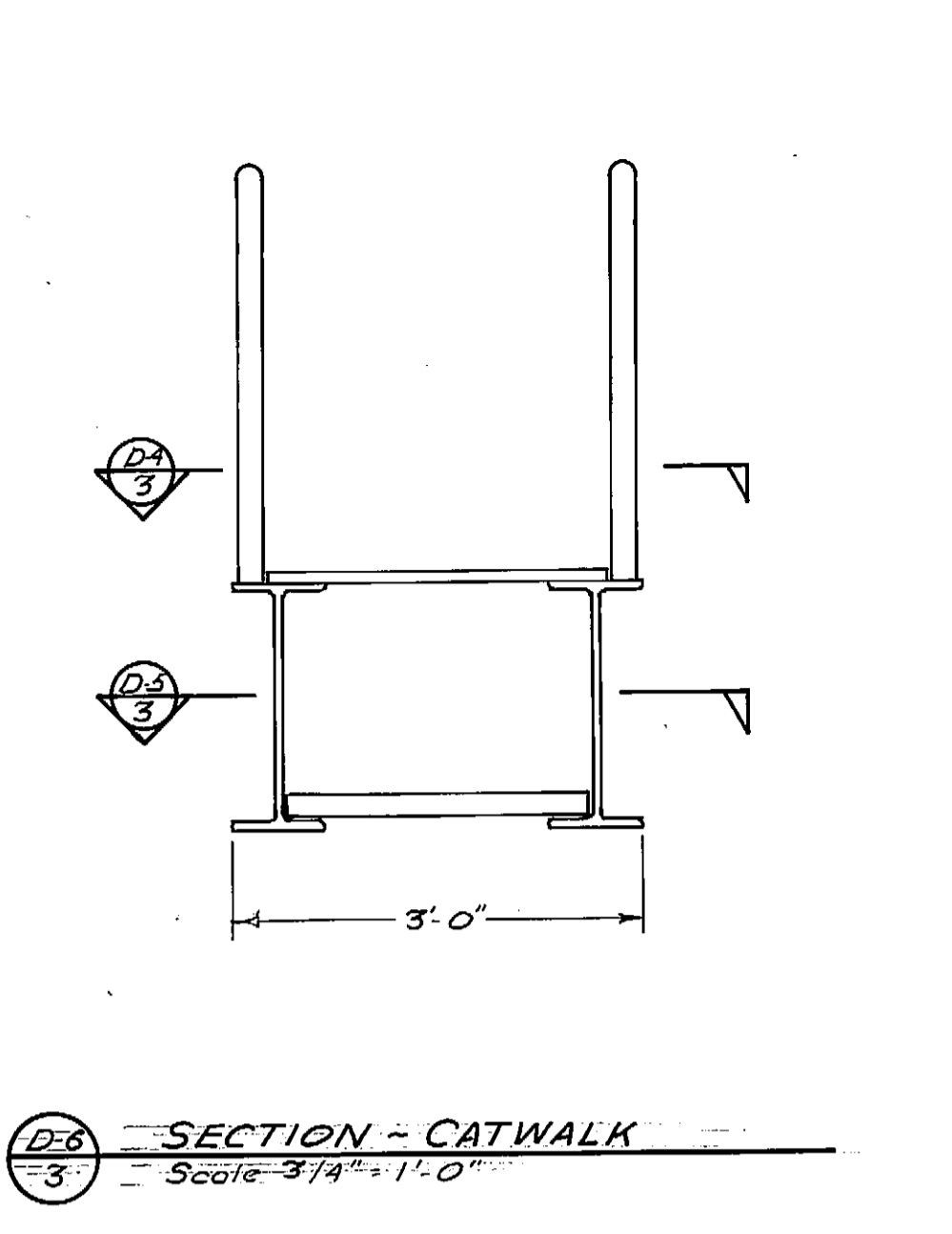
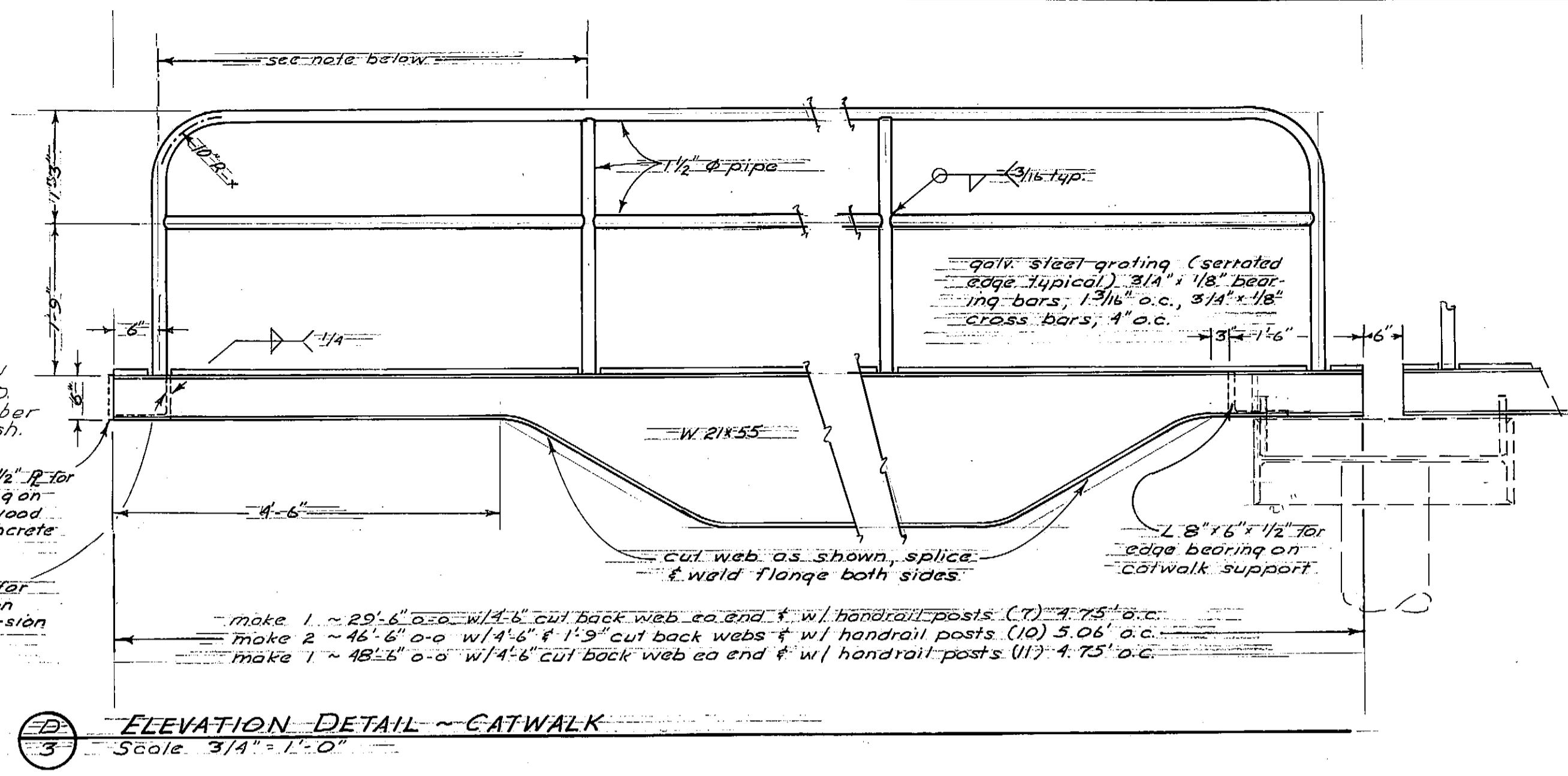
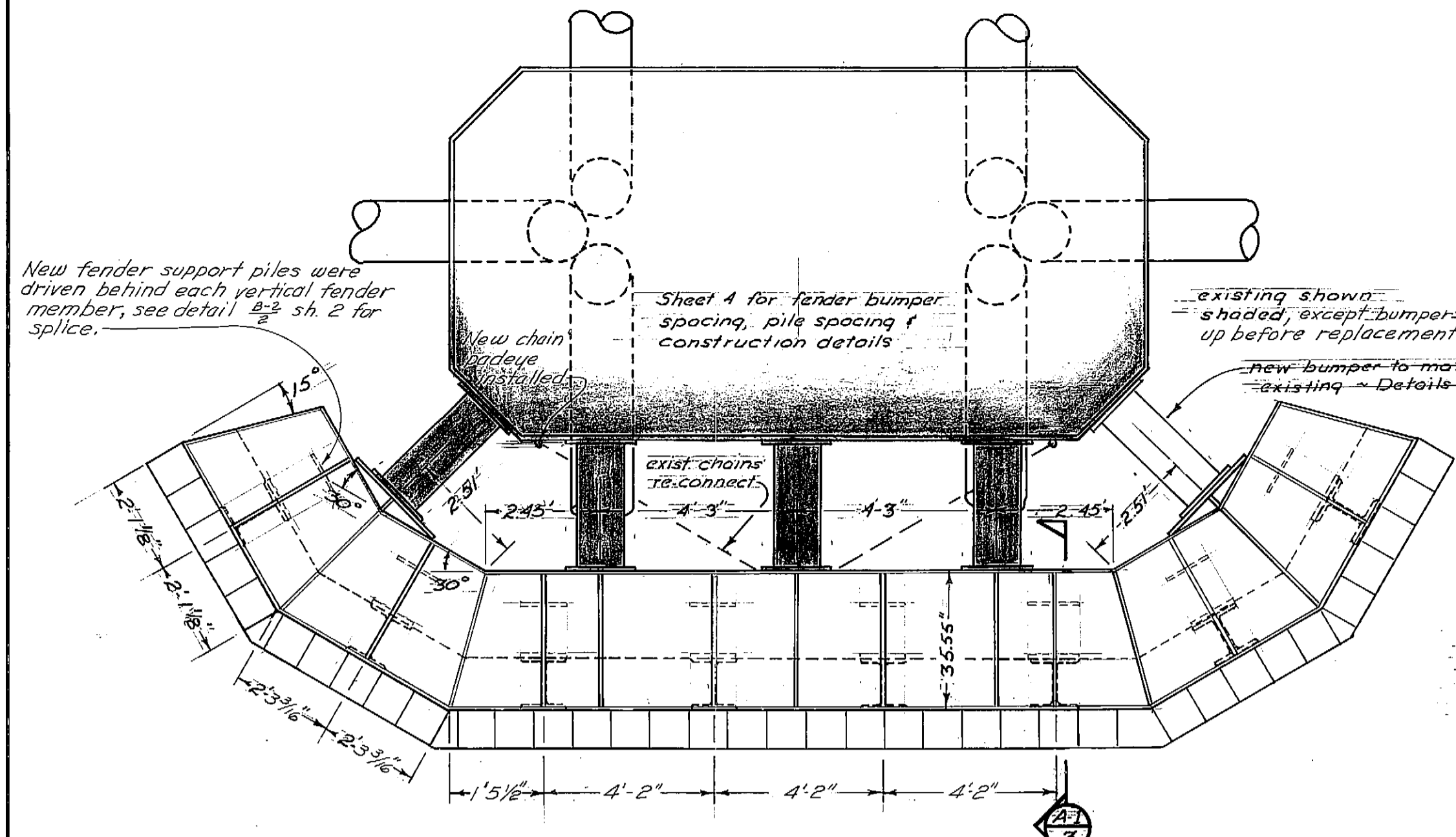
ELEV. 32'
1/8" bolt fender pile to ~~sub~~ bullrail



TYPICAL EXISTING BEAM
SCALE 1/4" = 1'-0"

As Constructed 4/76 MH.
12/2/71

DOCK REPAIRS
PETERSBURG FERRY TERMINAL
Don Stoffer
DIRECTOR
6-75157



As Built 12-76 #

DO NOT SCALE THIS DRAWING - USE DIMENSIONS

STATE OF ALASKA
DEPARTMENT OF PUBLIC WORKS
DIVISION OF WATER AND HARBORS

CATWALK DETAILS AND EXISTING DOLPHIN FENDER REPLACEMENT

SCALE - as shown	SURVEYED -	APPROVED -
DESIGNED - D.N.	DRAWN - B	Don Stotter DIRECTOR
CHECKED - B	DATE - Oct 75	
PROJECT NUMBER - 6-75157	SHEET - 3 OF 6	