

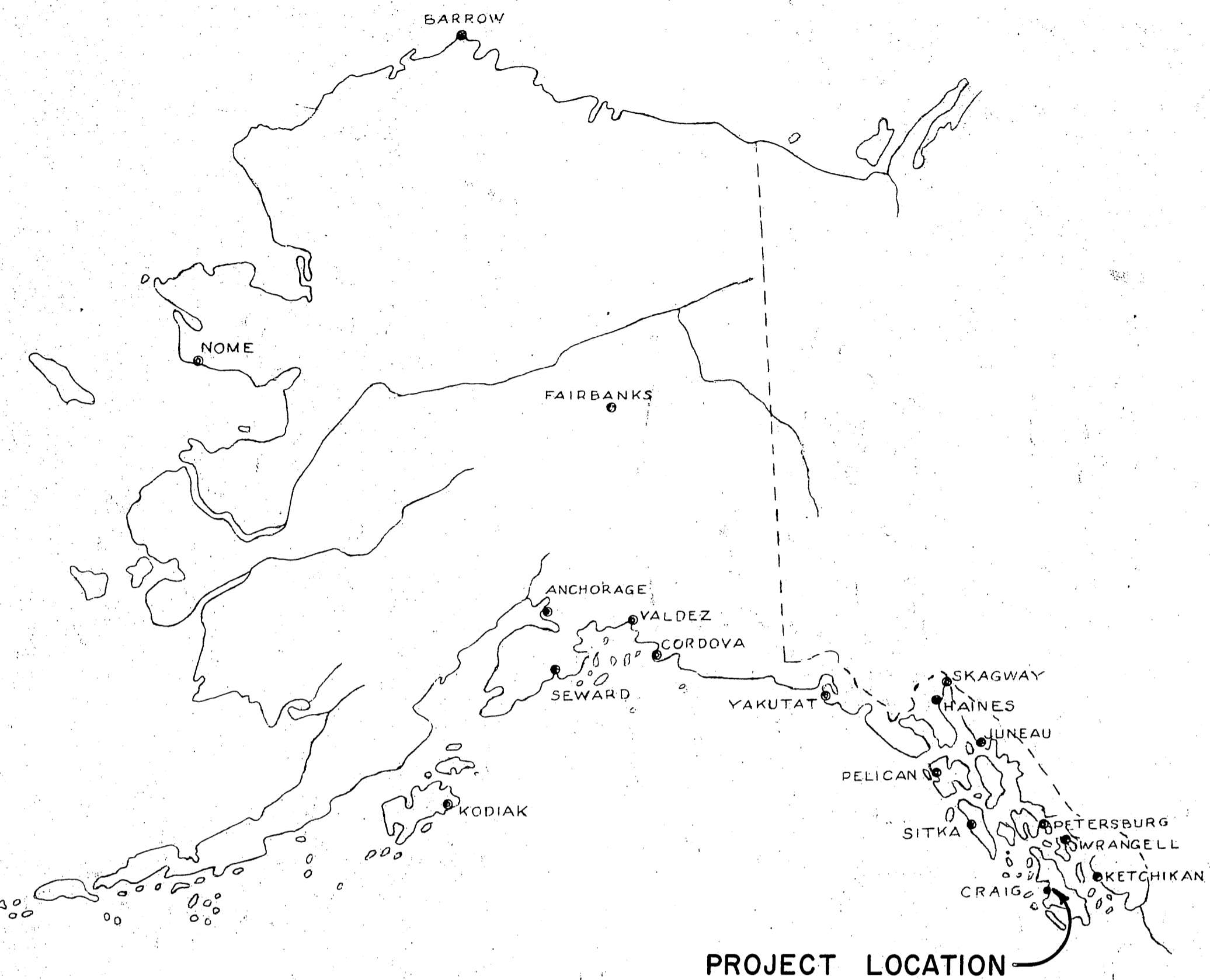
STATE OF ALASKA

DEPARTMENT OF PUBLIC WORKS

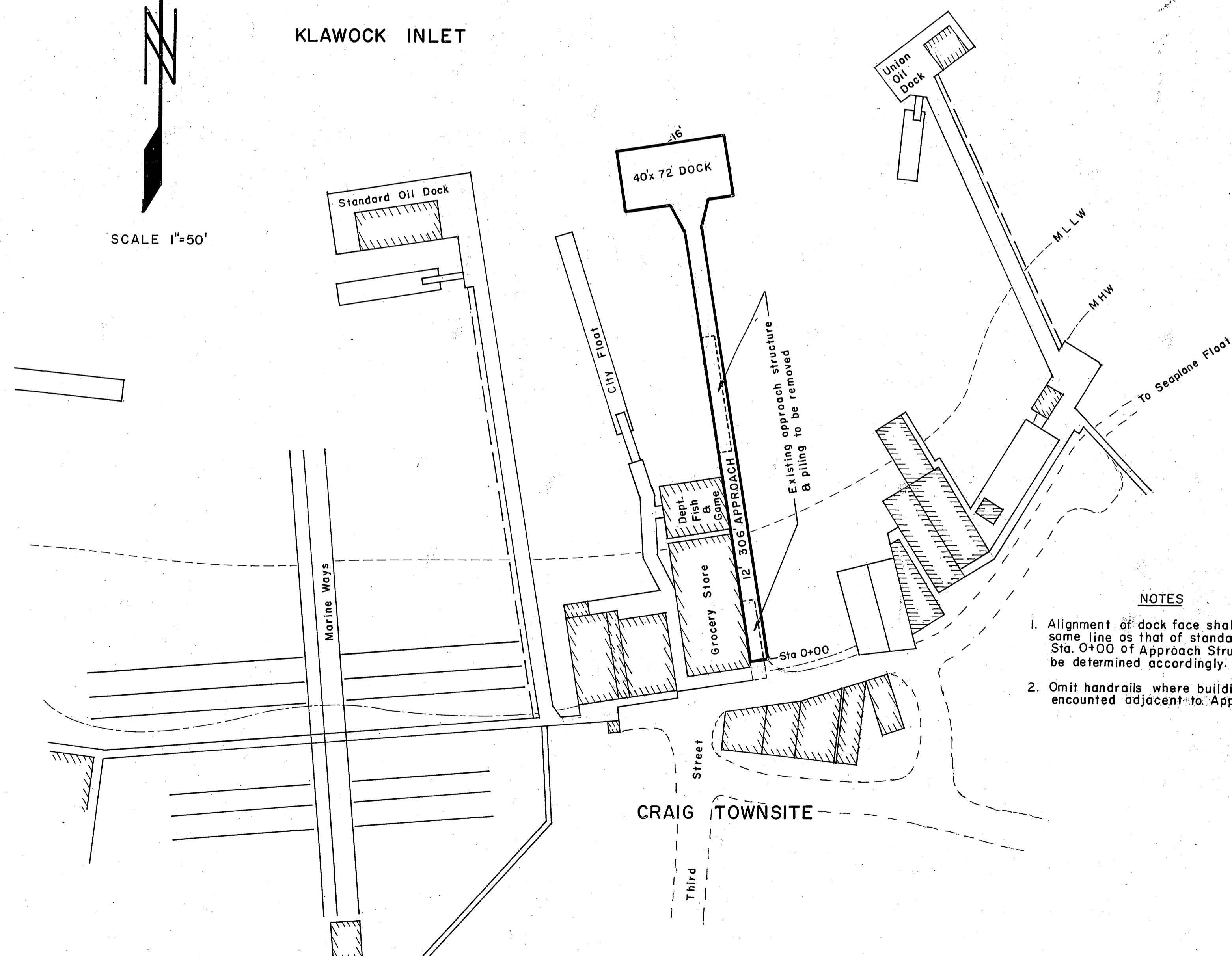
# DIVISION OF WATER & HARBORS

## CRAIG APPROACH & DOCK

### PROJECT NO. W64177



KLAWOCK INLET



#### NOTES

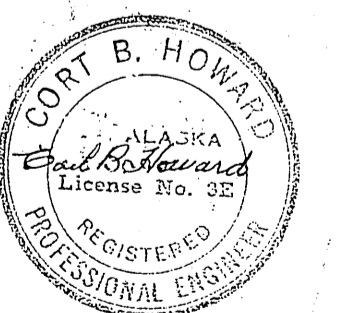
1. Alignment of dock face shall be on the same line as that of standard oil dock. Sta. 0+00 of Approach Structure shall be determined accordingly.
2. Omit handrails where buildings are encountered adjacent to Approach Structure.

#### WORK SUMMARY

Major units of this project shall include removal & disposal of the existing approach & piling, construction & installation of 6671 sq. ft. of Approach & Dock structure, & installation of 10 polystyrene floatation billets under the existing State float facility.

#### INDEX TO SHEETS

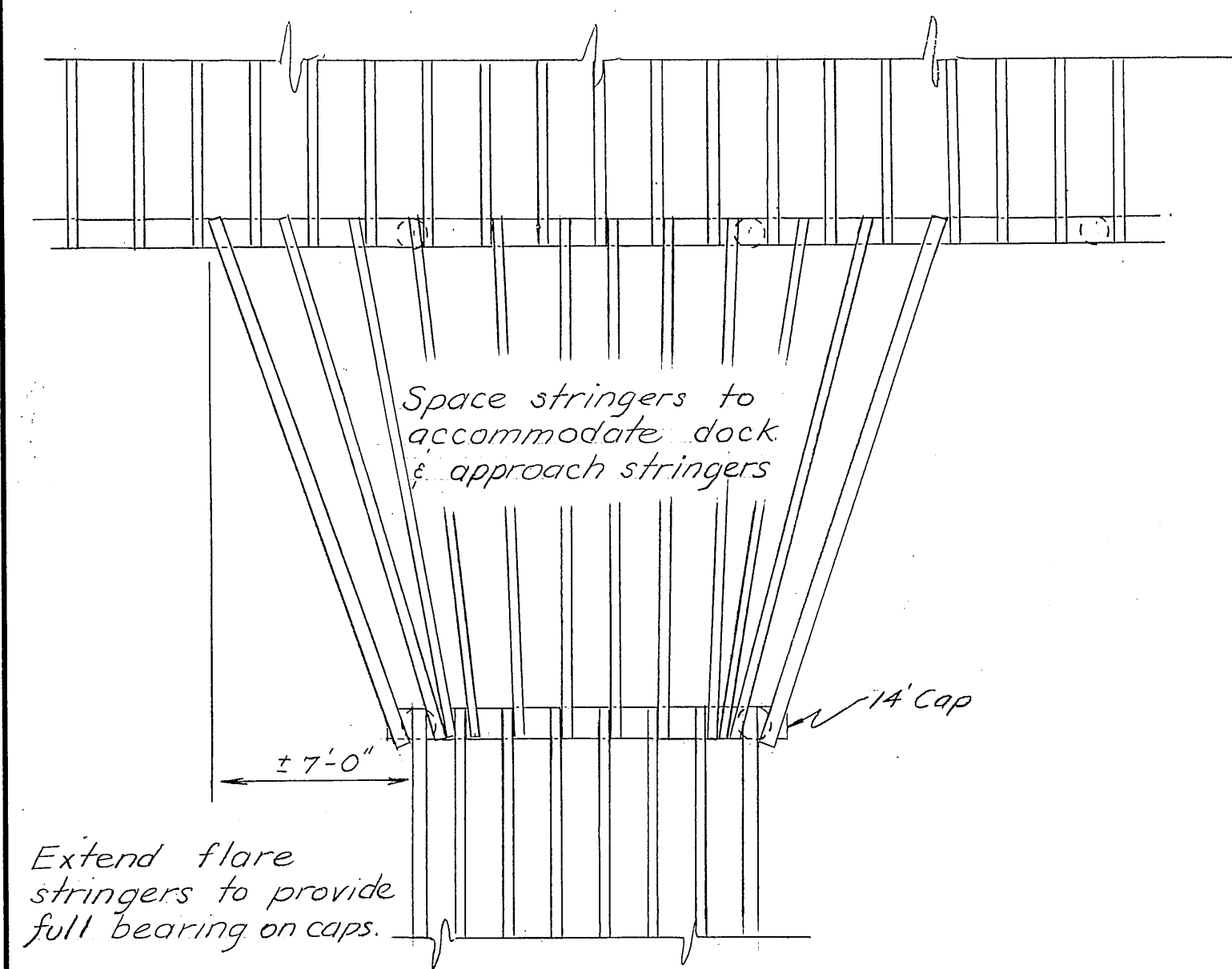
TITLE SHEET	SHEET 1
PROFILE & TYPICAL SECTIONS	SHEET 2
DOCK CONSTRUCTION DETAILS	SHEET 3



AS BUILT

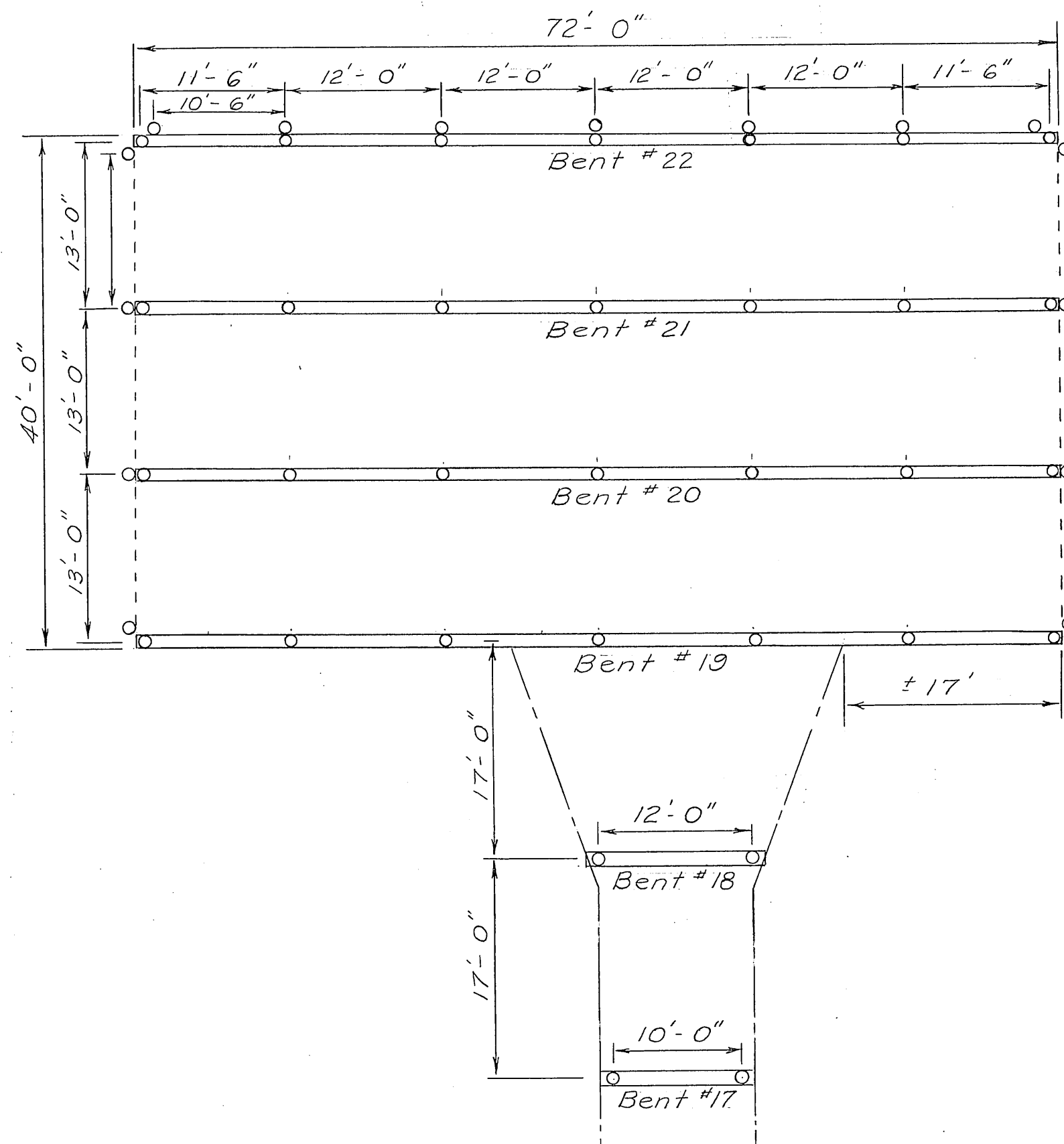
DATE 8/9/63 APPROVED *Ralph A. [Signature]* COMMISSIONER





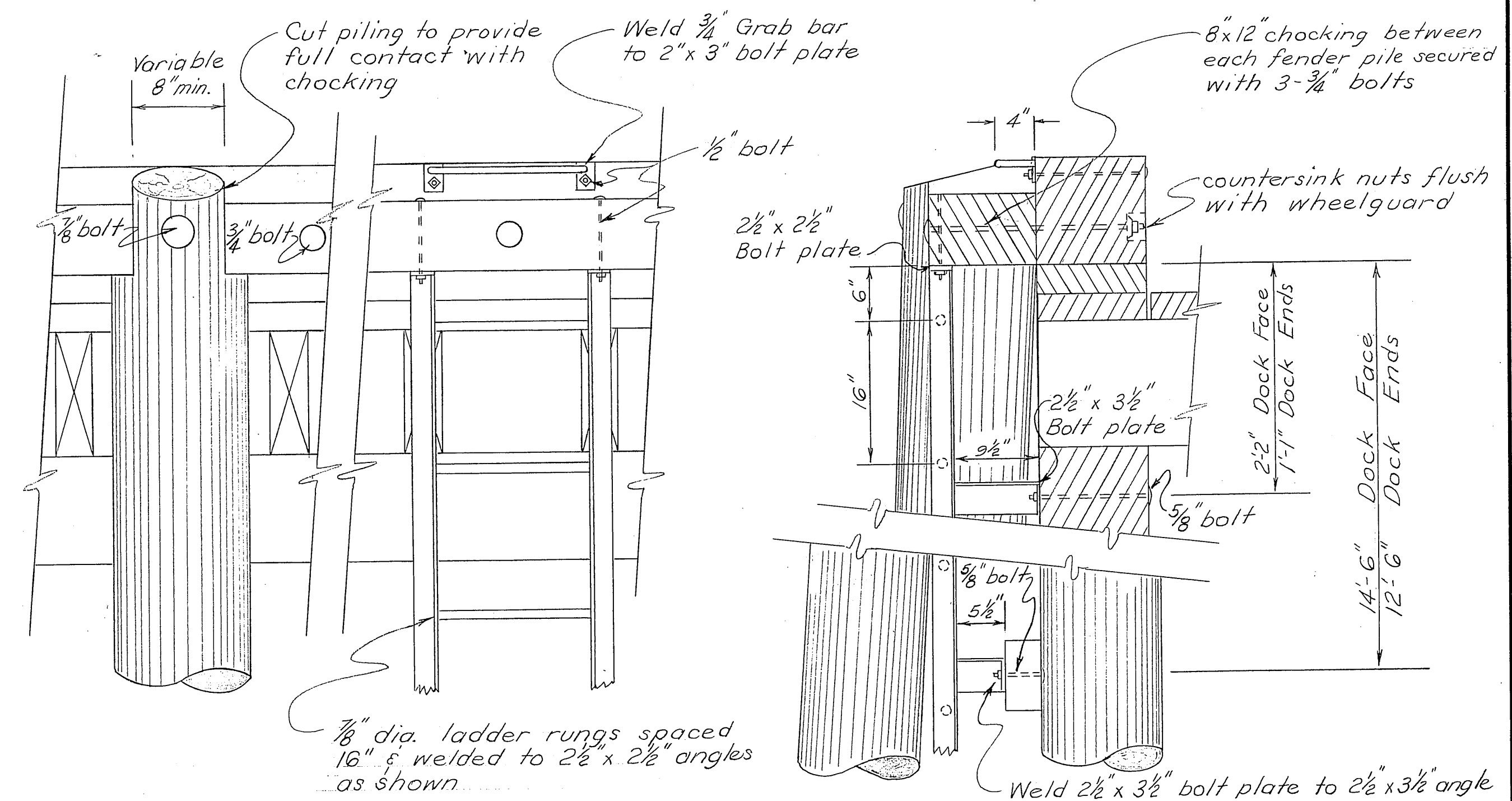
APPROACH FLARE DETAIL  
Stringer Layout

$\frac{3}{16}'' = 1'-0''$



DOCK PILING & CAP LAYOUT

$1'' = 10'$



FRONT ELEVATION

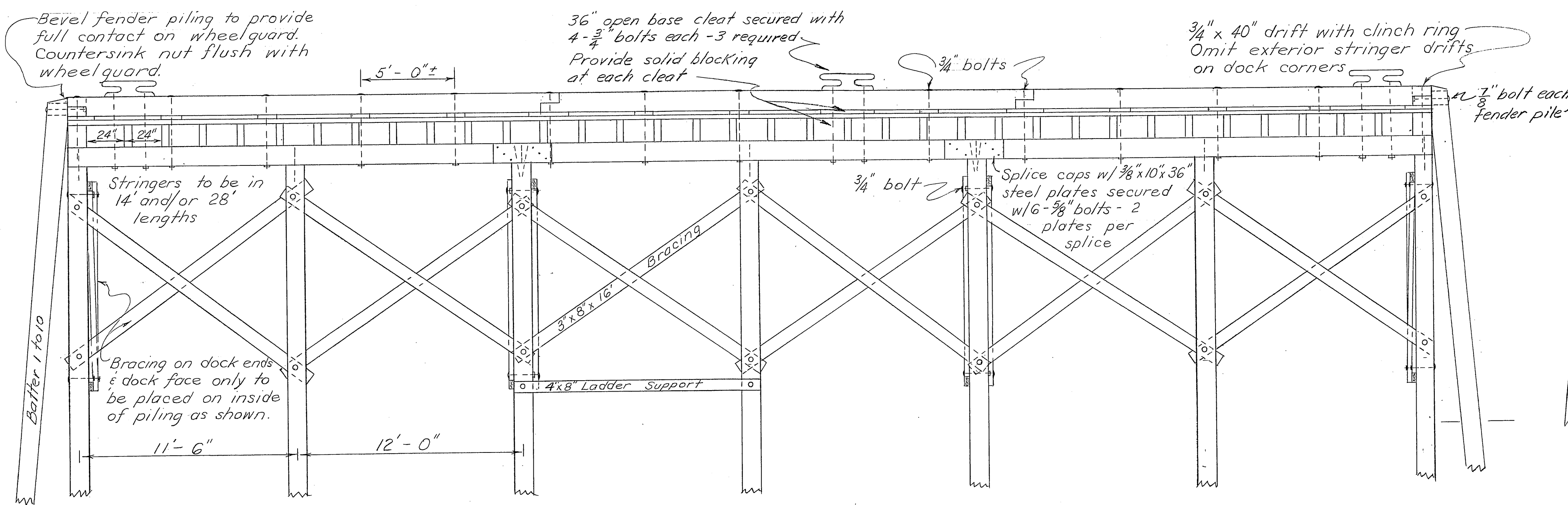
NOTES

SECTION

1. All angles & bolt plates to be  $\frac{3}{8}''$  in thickness.
2. Galvanizing shall be accomplished after fabrication. (Provide 3 Ladders)

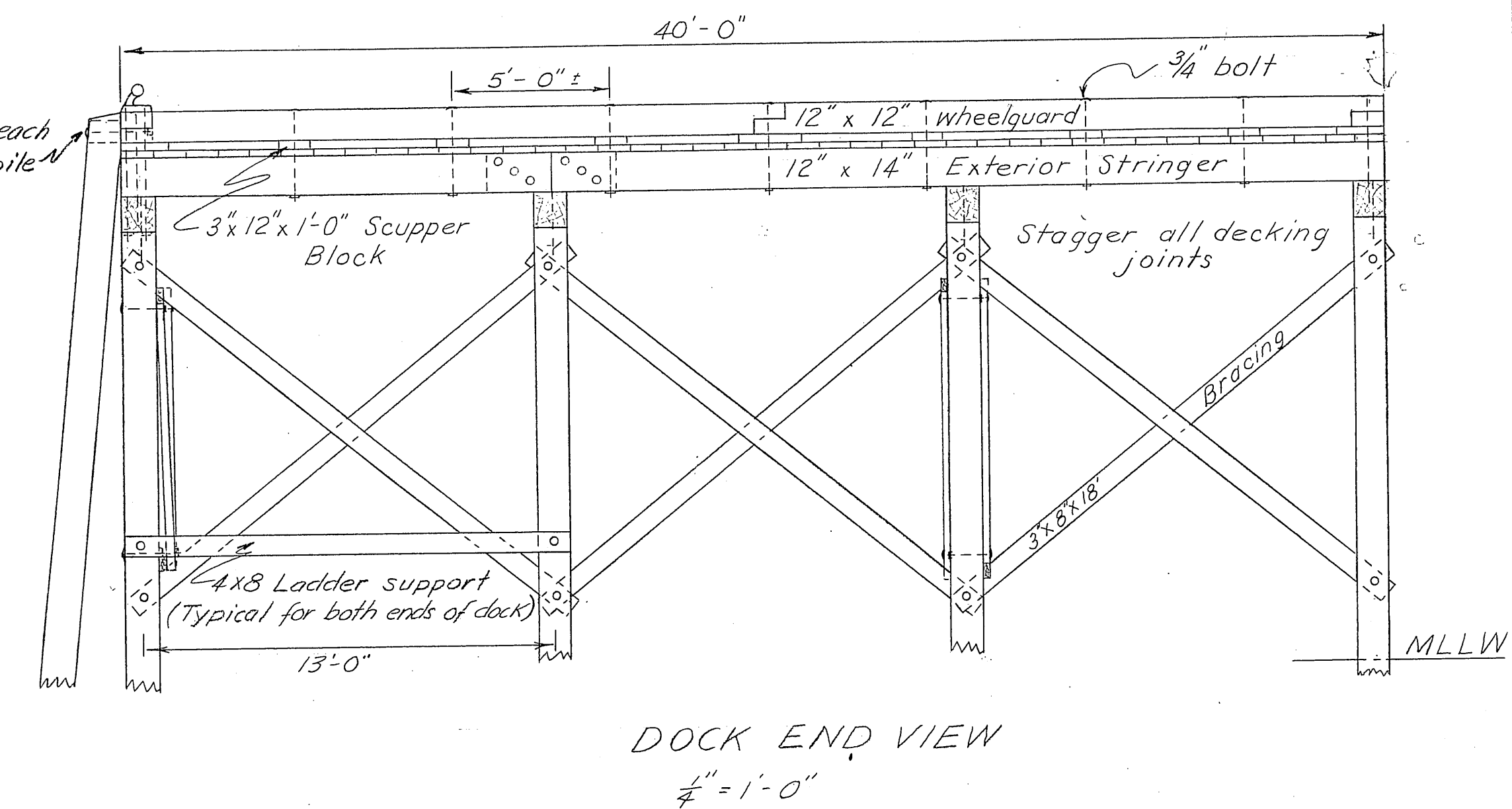
FENDER PILE & LADDER DETAIL

$1'' = 1'-0''$



ELEVATION DOCK FACE (Fender pile omitted for clarity)

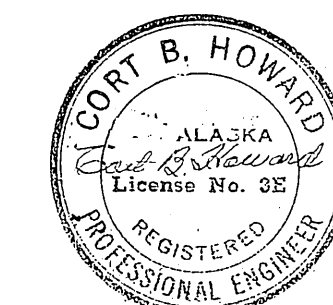
$\frac{1}{4}'' = 1'-0''$



DOCK END VIEW

$\frac{1}{4}'' = 1'-0''$

Note: All fastenings, materials & dimensions shall conform to Typical Approach construction except as shown. 8x8 wheelguards & handrails on Approach structure shall extend to bent # 19. All dock wheelguards to be 12x12



STATE OF ALASKA DEPARTMENT OF PUBLIC WORKS DIVISION OF WATER AND HARBORS		
<b>CRAIG DOCK</b> Dock Construction Details		
SCALE As shown	DATE Sept. 1963	APPROVED R.A. Downing COMMISSIONER
PROJ. NO. W6172	SURVEYED BY DS	DRAWN BY DW. CHECKED BY DSG