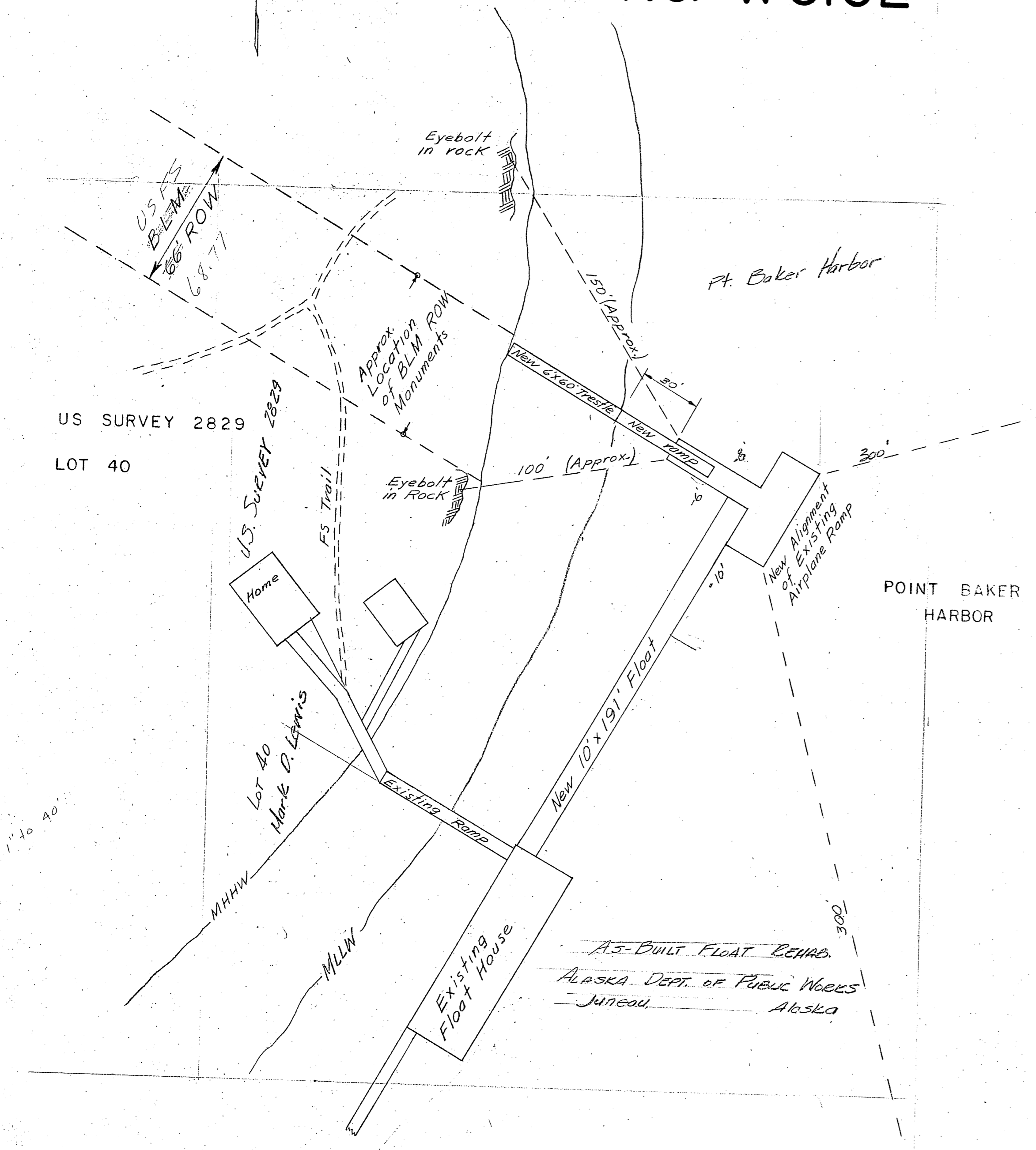
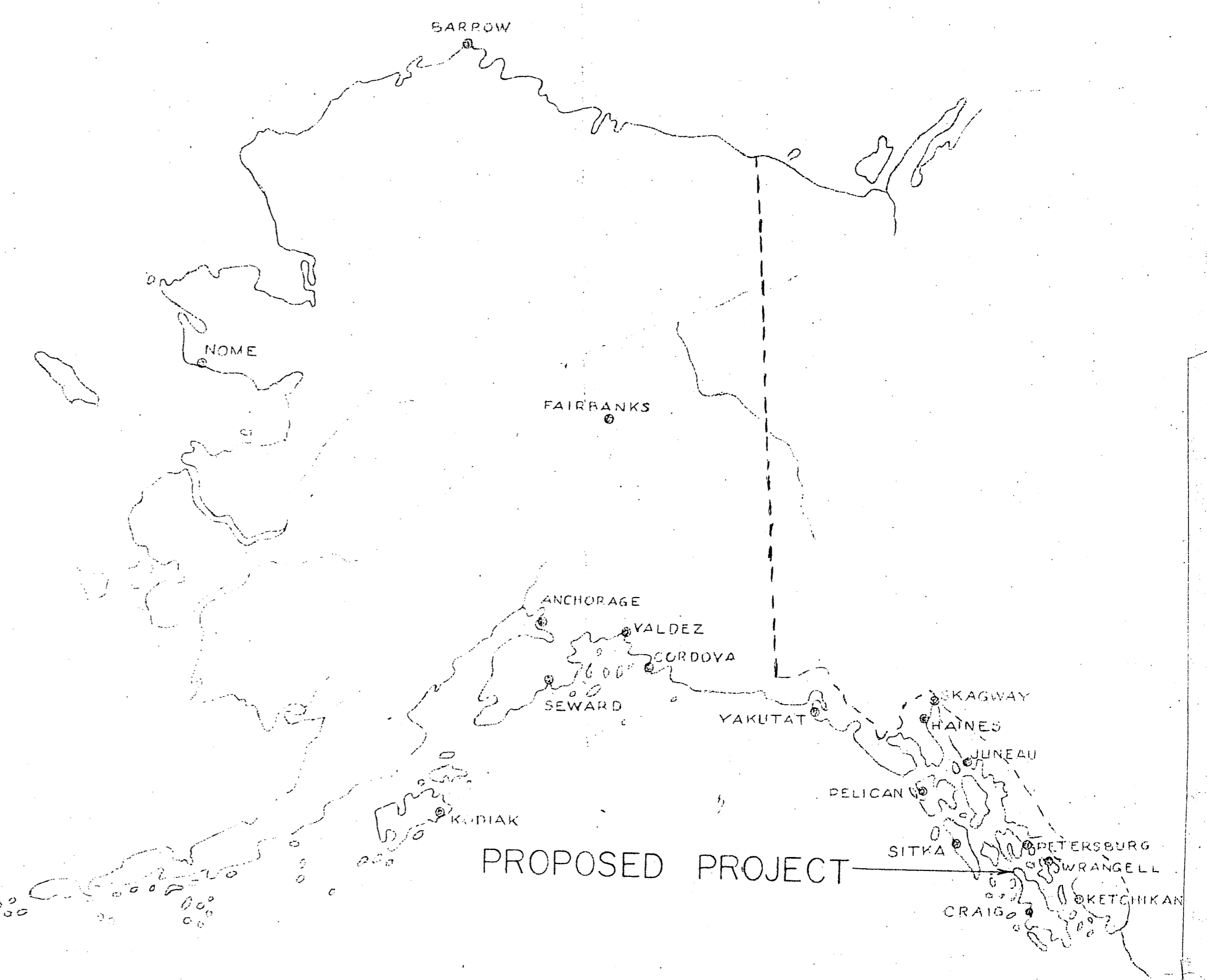


STATE OF ALASKA
 DEPARTMENT OF PUBLIC WORKS
 DIVISION OF WATER & HARBORS

PT. BAKER FLOAT & APPROACH
 PROJ. NO. W6102



Notes

Existing float to be removed & turned over to the local community for reuse elsewhere.
 Existing airplane ramp to be realigned as shown.
 The anchor presently securing the airplane ramp to be used at one of the indicated locations & a new 5-Ton anchor at the other.
 Anchor lines to be $\frac{3}{8}$ " Galv. plow steel cable secured to 35' lengths of $\frac{3}{8}$ " Galv. Chain - chain secured to float logs by making two wraps drift pinned & shackled in place.
 Holes drilled in rock to be $1\frac{1}{2}$ " x 24"
 Eyebolts to be 1" x 28" Galv. steel secured in the hole with molten sulfur.
 Styrofoam float connection to float house & airplane ramp to be made with chain - chain secured to styro. float sill with $\frac{3}{8}$ " min. dia. eyebolts & shackles.

WORK SUMMARY

Major units of this project shall include the removal of existing float, realignment of existing airplane float & construction & installation of a new 10' x 191' float, 6' x 60' approach trestle, & a 6' x 50' ramp.

INDEX TO SHEETS

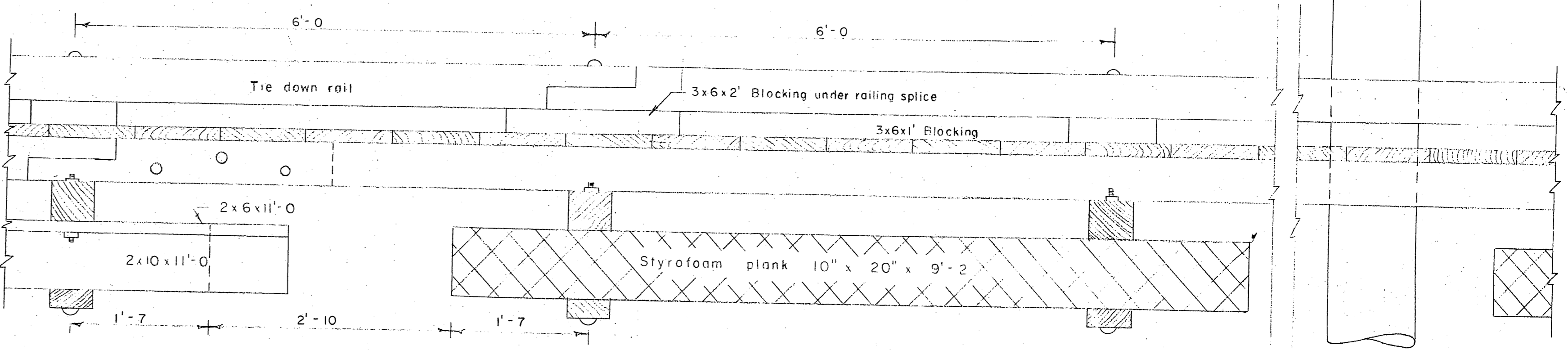
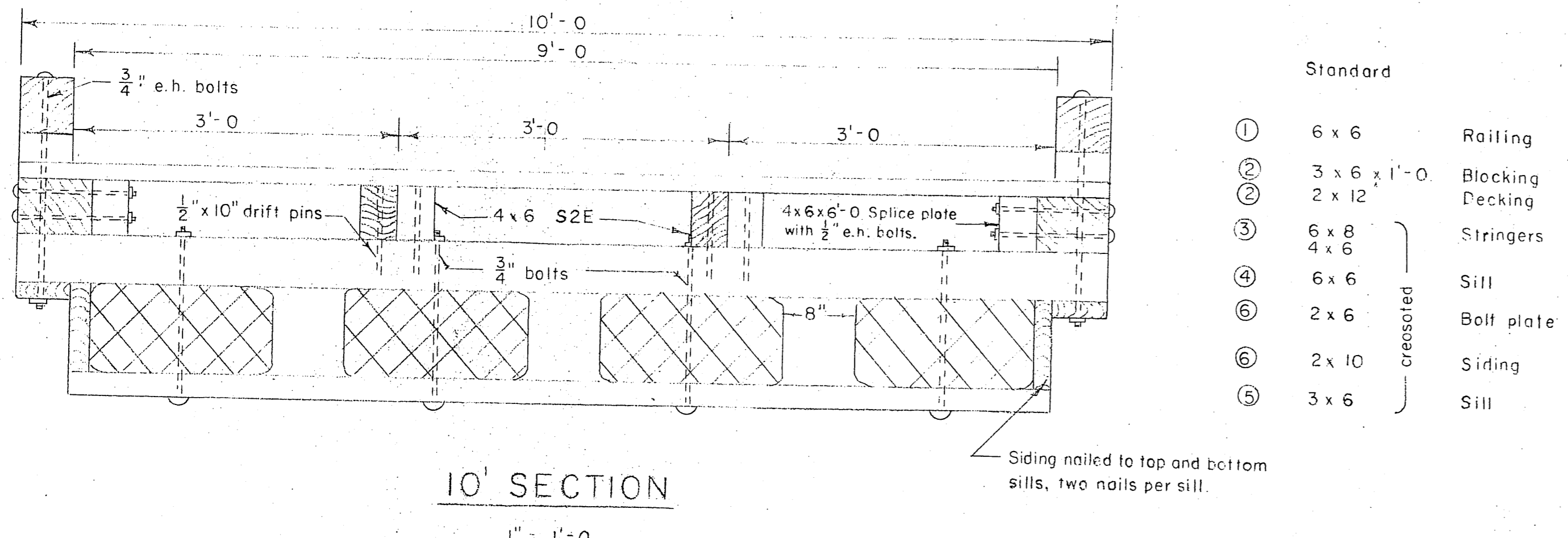
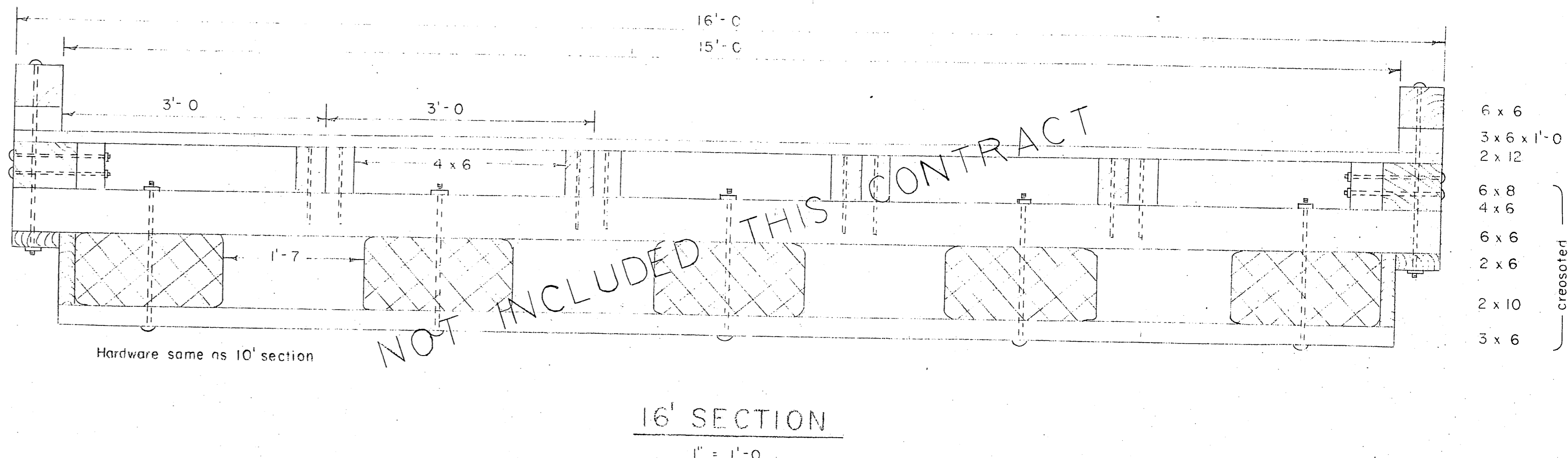
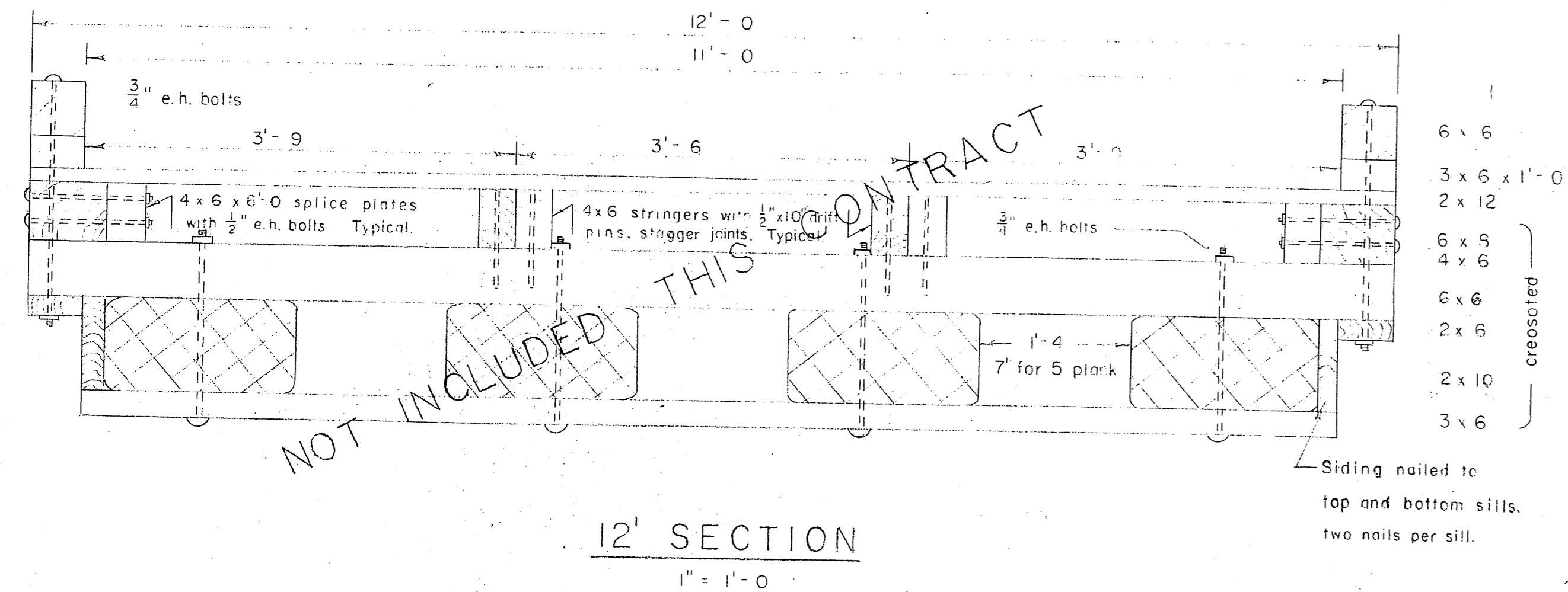
LAYOUT SHEET	---	1
FLOAT DETAILS	---	2
GANGWAY DETAILS	---	3
APPROACH DETAILS	---	4

A.S. BUILT FLOAT CHAS.
 ALASKA DEPT. OF PUBLIC WORKS
 Juneau, Alaska

5 Ton 2000# Concrete Block Anchor

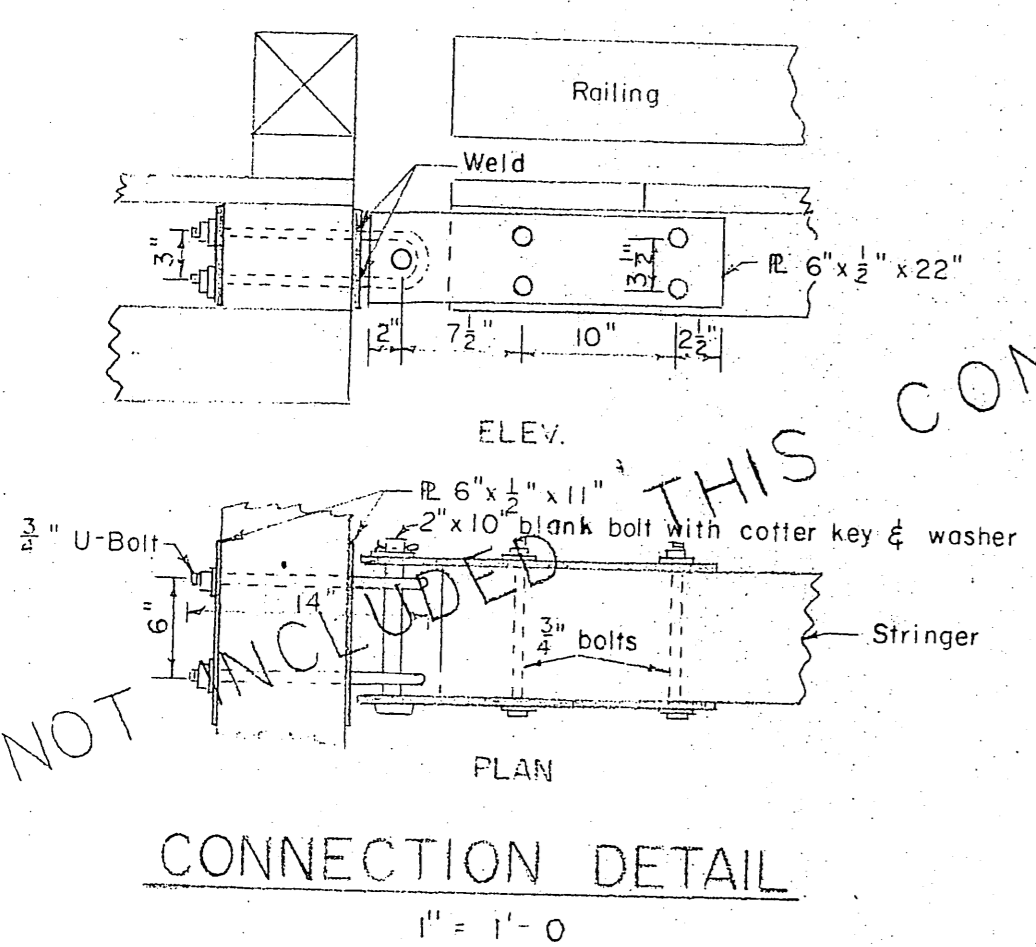
NO.	DATE	REVISION	BY
STATE OF ALASKA DEPARTMENT OF PUBLIC WORKS DIVISION OF WATER AND HARBORS			
PT. BAKER FLOAT & APPROACH PT. BAKER, ALASKA			
SCALE 1" = 40'		DATE 6-21-60	
PROJ. NO. W 6102		APPROVED: <i>R. La. [Signature]</i> COMMISSIONER	
SURVEYED BY RPH		DRAWN BY DDS CHECKED BY	

A-15



Standard

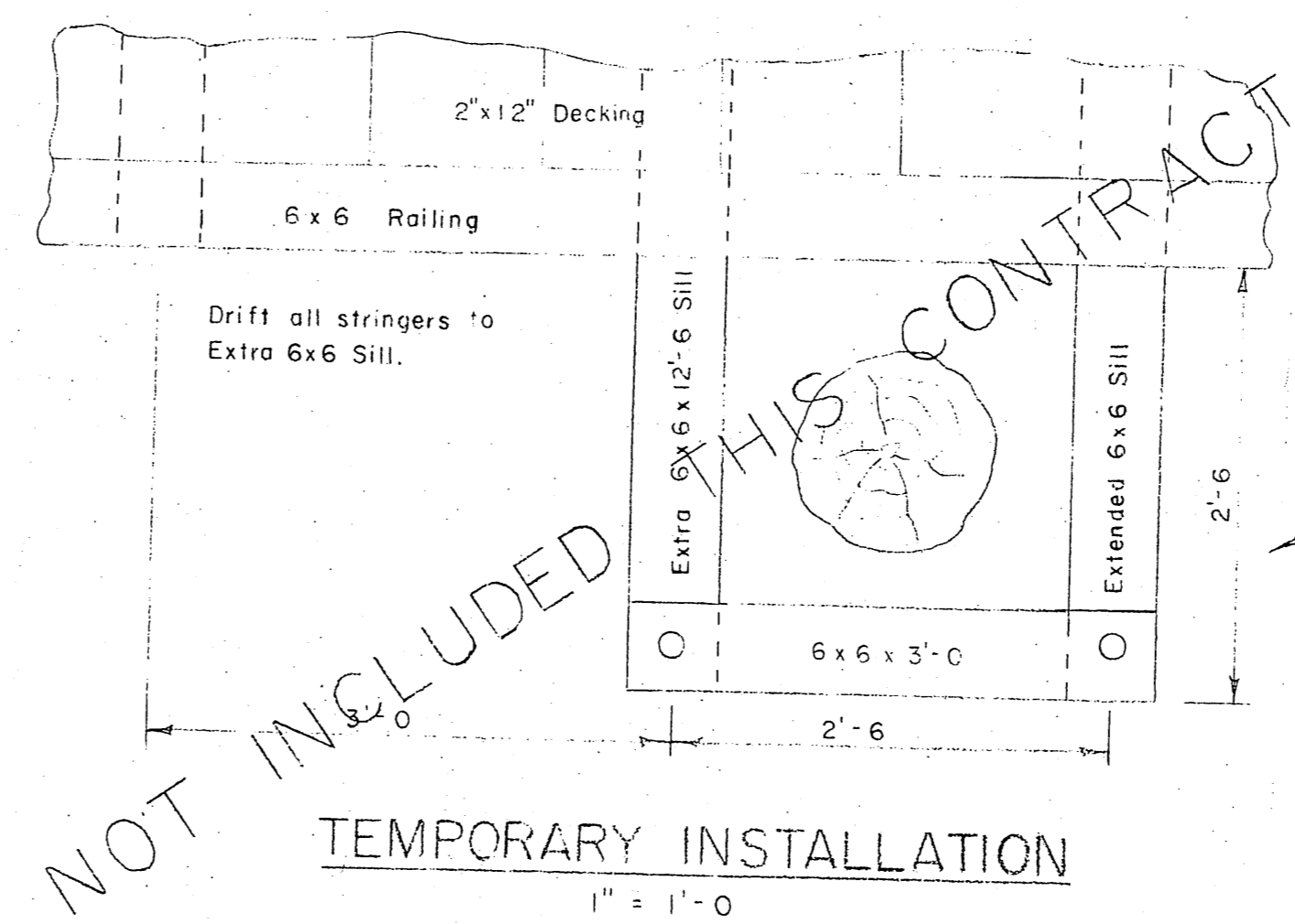
①	6 x 6	Railing
②	3 x 6 x 1'-0	Blocking
③	2 x 12	Decking
④	6 x 8	Stringers
⑤	4 x 6	
⑥	6 x 6	Sill
⑦	2 x 6	Bolt plate
⑧	2 x 10	
⑨	3 x 6	Sill



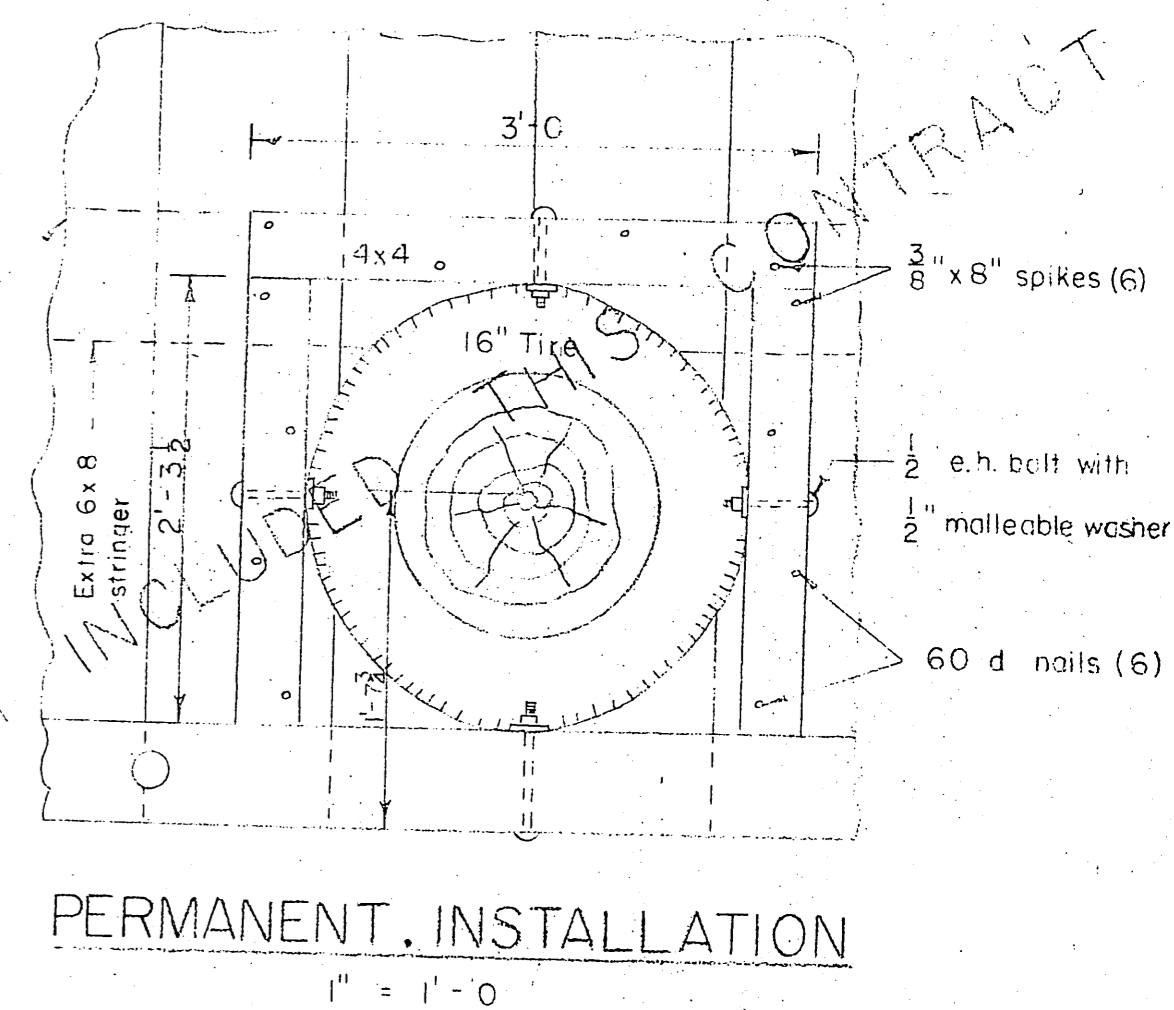
NOTE
 Cotter key to be bronze.
 Plain washer between cotter key and steel plate.
 Weld outside striker plate to U-Bolt.

STANDARD GRADING AND DRESSING RULES NO. 15

①	Construction	Rough	Sitka Spruce
②	Construction	S1S	" "
③	Construction	S2S	Douglas Fir
④	Select Structural	S2S	Douglas Fir
⑤	Select Structural	Rough	Douglas Fir
⑥	Cnstr.	"	" "



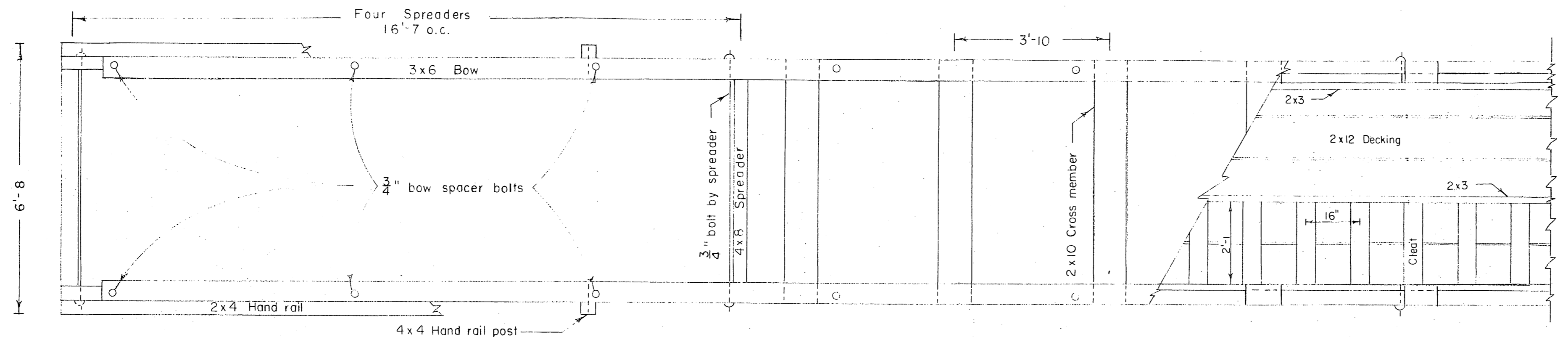
ELEVATION
 Piling on one side of float, spacing between piles to be in 12'-0" multiples. Piling fender consists of a 16" tire bolted to 4x4s with 1/2" bolts. 4x4s secured with spikes to deck and extra stringer.



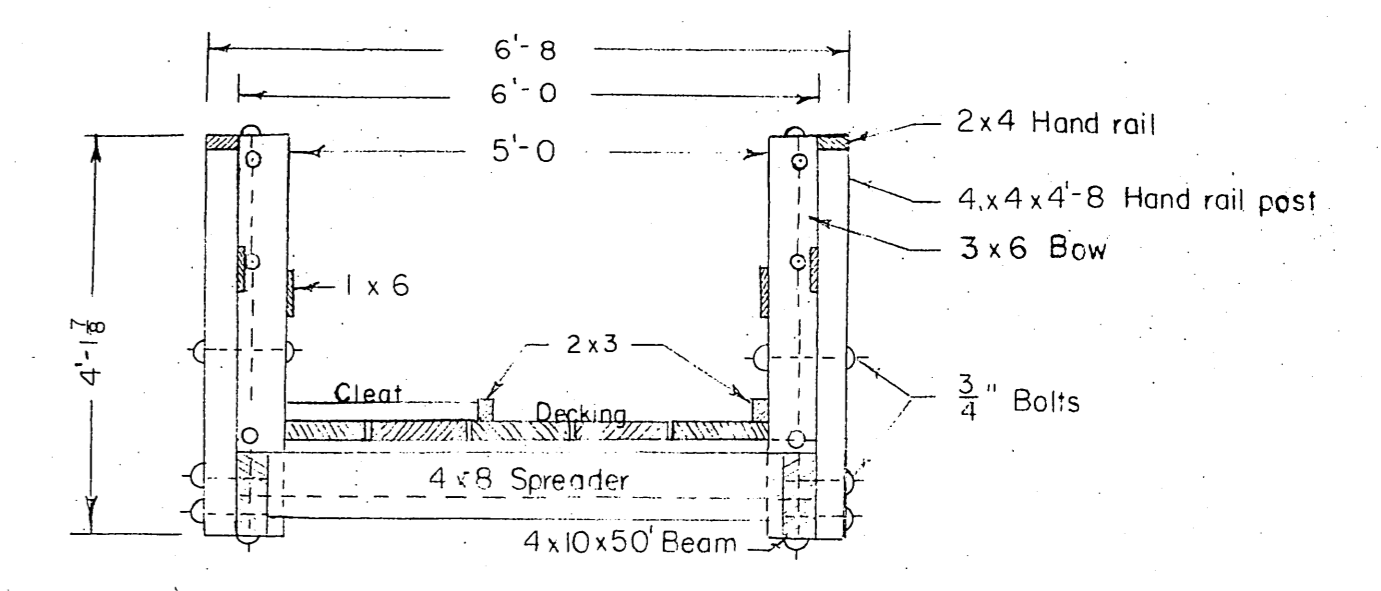
NOTES
 Bottom and top sills, bolt plate, siding and stringers to be Douglas fir creosoted to 12 lb. retention. Decking, rail block and tie down rail to be Sitka Spruce. All hardware to be galvanized. e.h. bolt = economy head bolt. Decking to be secured with two nails to each supporting member. A malleable iron washer to be between nut and wood surface in all instances, and a lock washer between nut and steel surface.

Native wood bearing surfaces and joints shall be treated with Western Marine Preservative WMD 702.

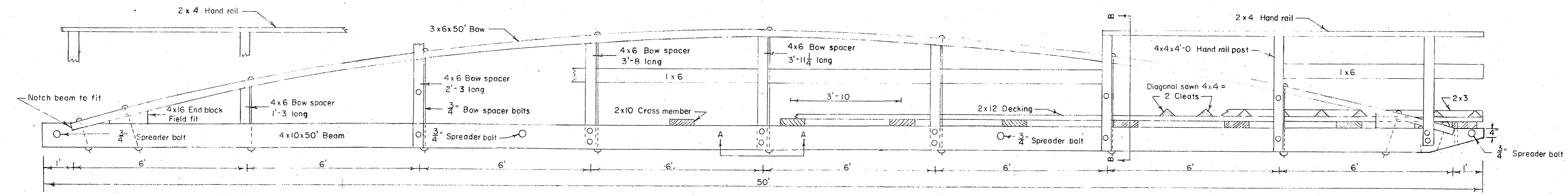
NO	DATE	REVISION	BY
STATE OF ALASKA DEPARTMENT OF PUBLIC WORKS DIVISION OF WATER & HARBORS			
TYPICAL FLOATS			
SCALE	As Shown	APPROVED	R.A. Downing
DATE		COMMISSIONER	
PROJ. NO.		SURVEYED BY	RPH
		DRAWN BY	WEB
		CHECKED BY	WEB



PLAN
1/2" = 1'



SECTION B-B
1/2" = 1'

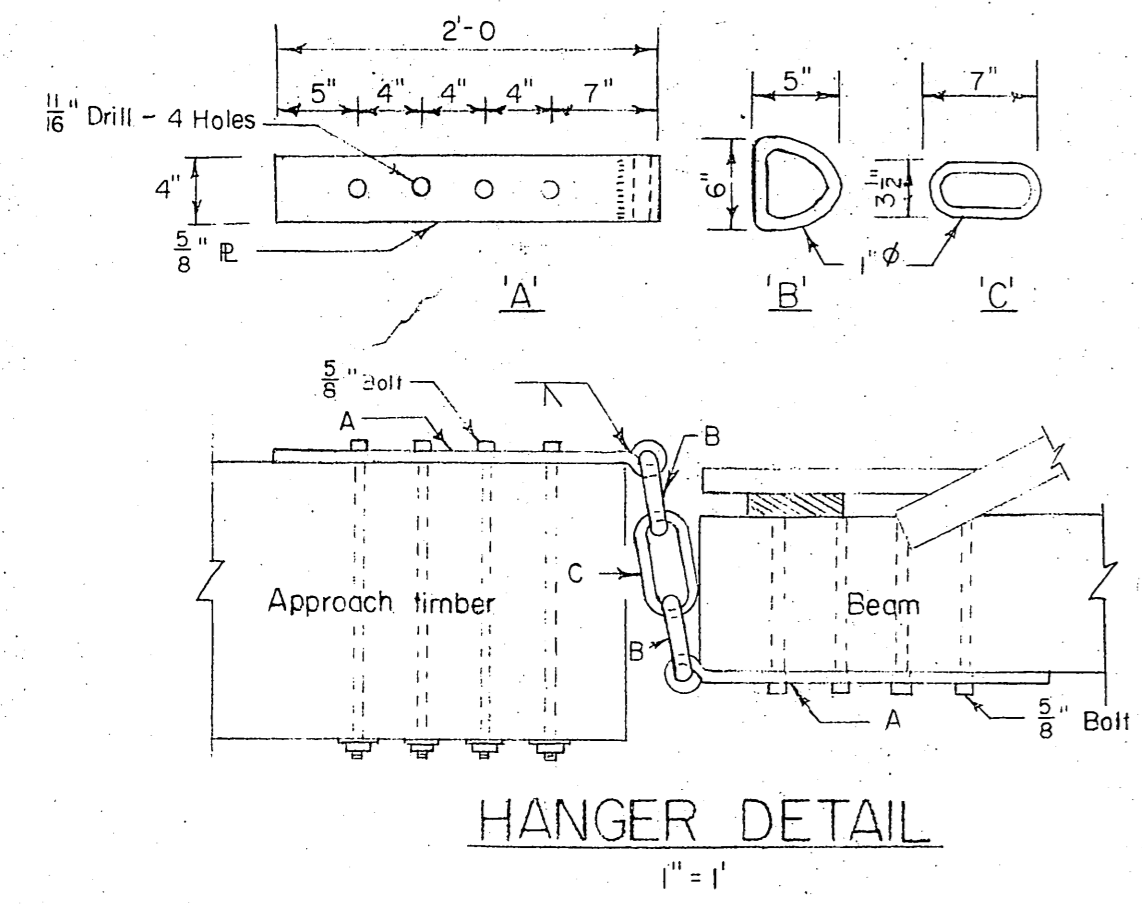


SIDE ELEVATION
1/2" = 1'

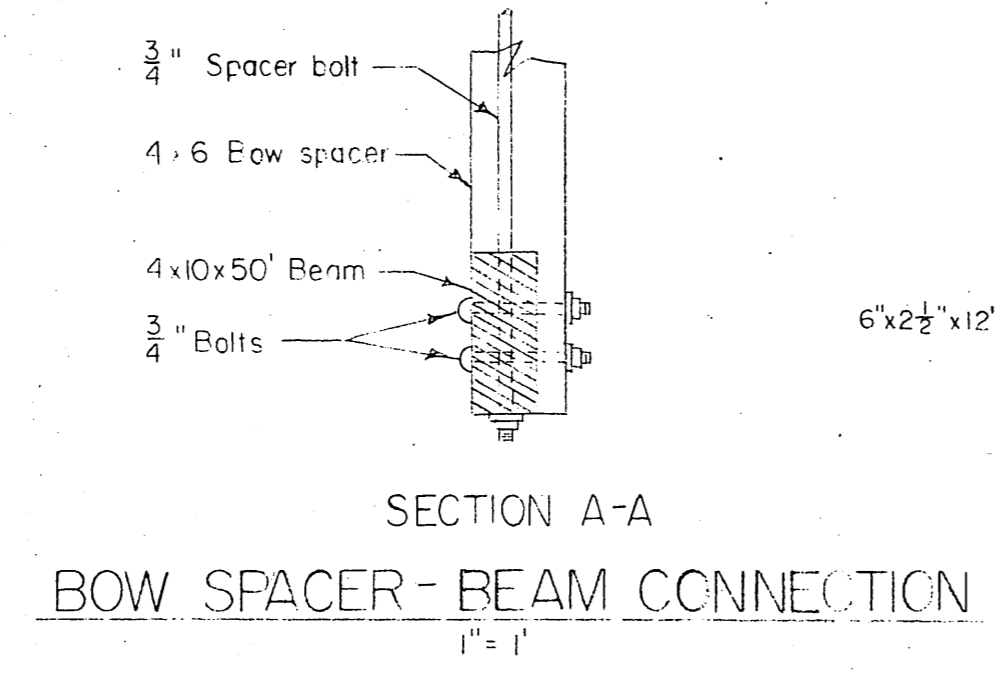
NOTES

- Section A-A applies only to the three center bow spacers. Remaining four bow spacers are flush with top of beam.
- All lumber with the exception of creo. beams to be construction grade Sitka Spruce.
- Bow members to be single piece Select Structural Douglas fir.
- Creo. beams to be single piece. Select Structural Douglas fir, 10 lb retention.
- Hand rail, bow and 1x6 to be S4S.
- Bow spacer heights are centerline measurements, and spacer to be S2E.
- False stringers directly under runners.
- Channel and plate runners to be securely spiked to false stringers.
- All bolts are 3/4" economy headed, unless noted otherwise.
- Log bolts to be gimlet pointed.
- Creo. beams to be S2E.
- Cross members and decking to be SIS.

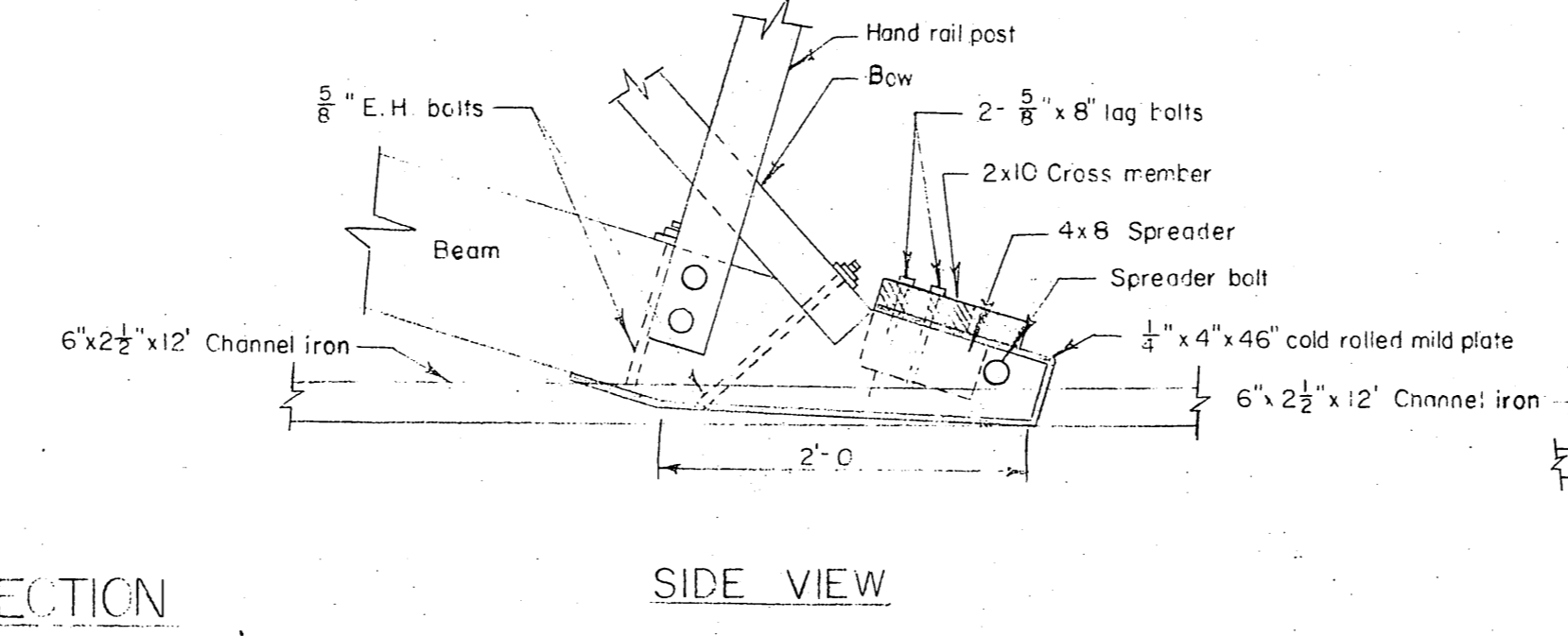
Native wood bearing surfaces & joints shall be treated with Western Marine Preservative WD 1702



HANGER DETAIL
1" = 1'

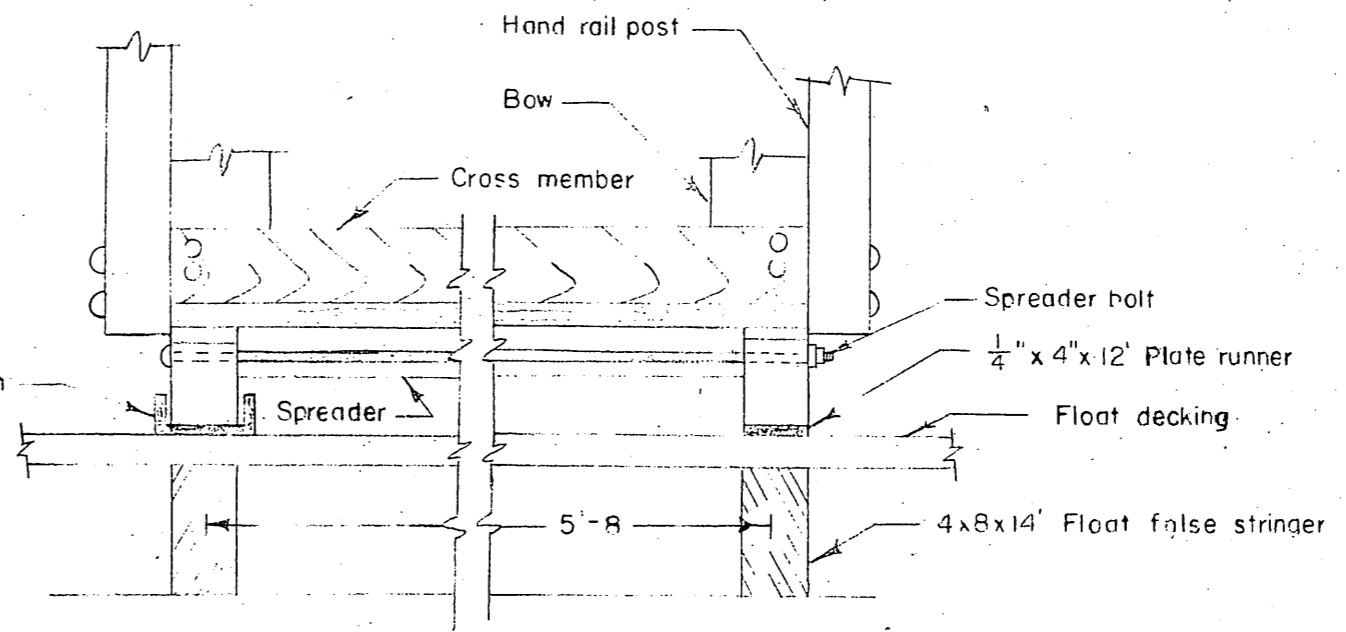


SECTION A-A
BOW SPACER-BEAM CONNECTION
1" = 1'



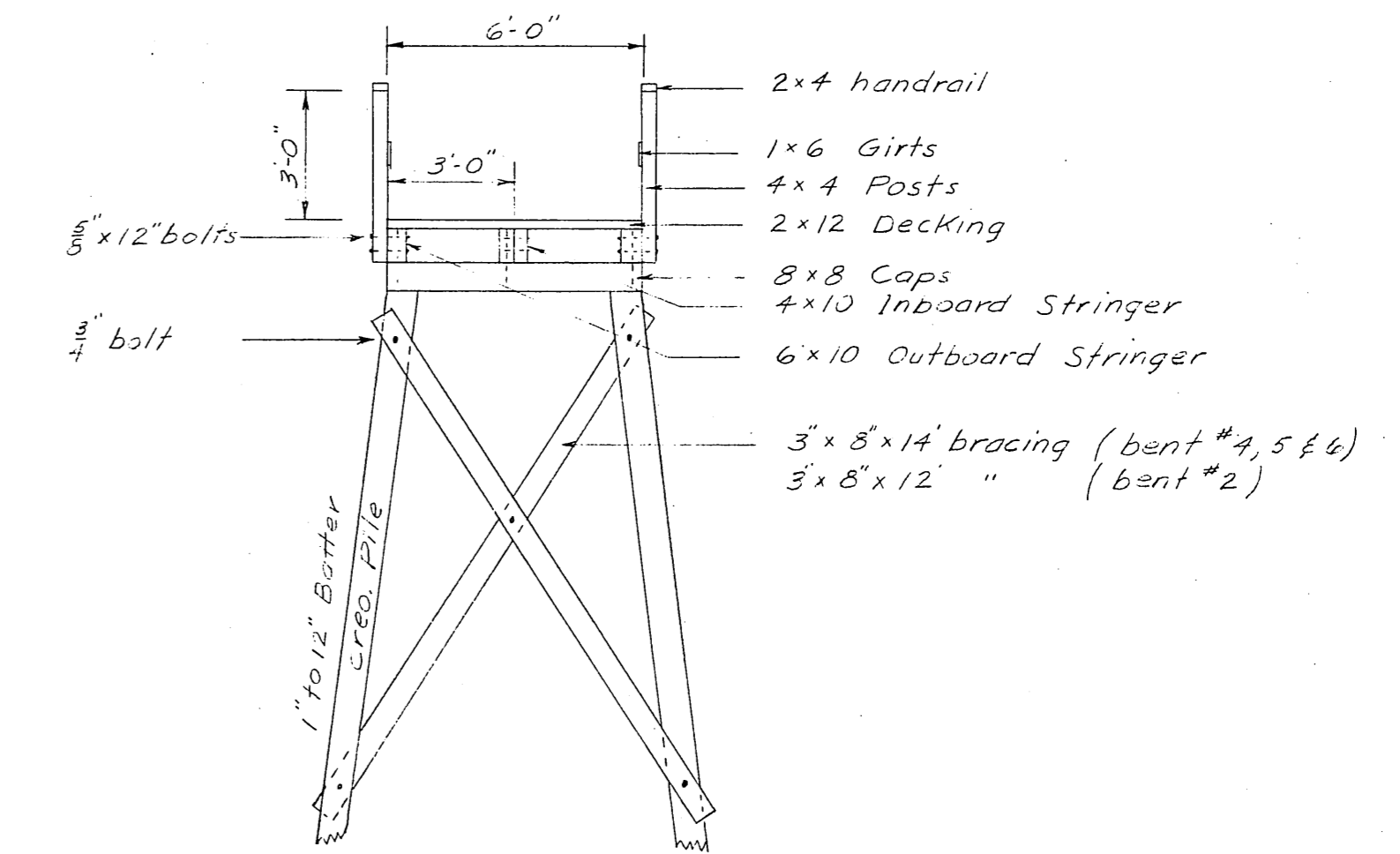
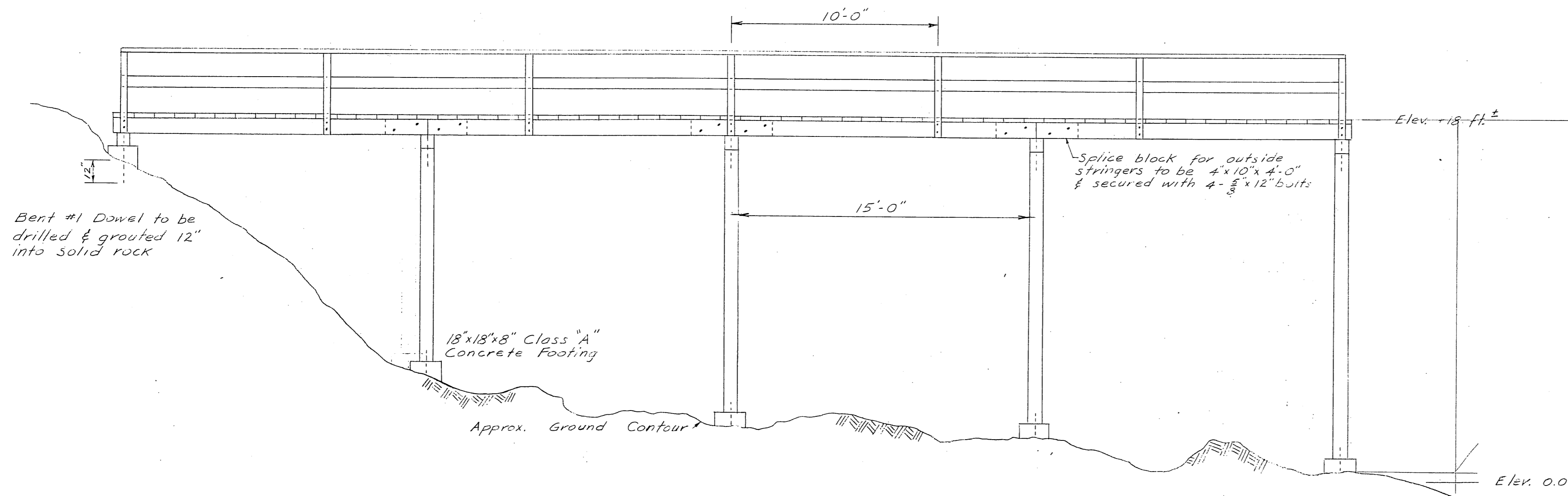
SIDE VIEW

GANGWAY-FLCAT CONNECTION
1" = 1'



END VIEW

NO.	DATE	REVISION	BY
ALASKA DEPARTMENT OF PUBLIC WORKS			
DETAIL FLOAT GANGWAY			
SCALE As Shown	APPROVED <u>R.A. Downing</u> COMMISSIONER		
DATE	DRAWN BY <u>RPH</u> CHECKED BY <u>WEB</u>		
FILE NO.			
SURVEYED BY			



Approach Trestle (5 bents 15'-0" Centers)
SCALE 1/4" = 1'-0"

Notes

Piling lengths as shown are approx. only. Piling to be hand set on 18"x18"x8" concrete footings excavated to solid rock. A 3/4" steel dowel shall extend from the footing & project at least 6" into the piling. Caps to be secured to piling with 3/4"x18" drift pins. Stringers to be secured to caps with 5/8"x16" drift pins. Decking to be nailed with 40 d. spikes. All hardware to be Galv. with a malleable iron washer between nut & wood surfaces. All cuts & drill holes to be treated with creos. oil. Bolts to be economy head bolts.

All piling & bracing treated to 12 lbs. Retention
All caps & stringers " " 10 lbs. "
All lumber above stringers to be Sitka Spruce

HAND RAIL	S4S	CONSTRUCTION
GIRT	S4S	"
HAND RAIL POST	ROUGH	"
DECKING	S1S	"
BRACING	ROUGH	"
STRINGERS	S2E	SELECT STRUCT.
CAPS	S2S	"
PILING	CLASS "A"	"