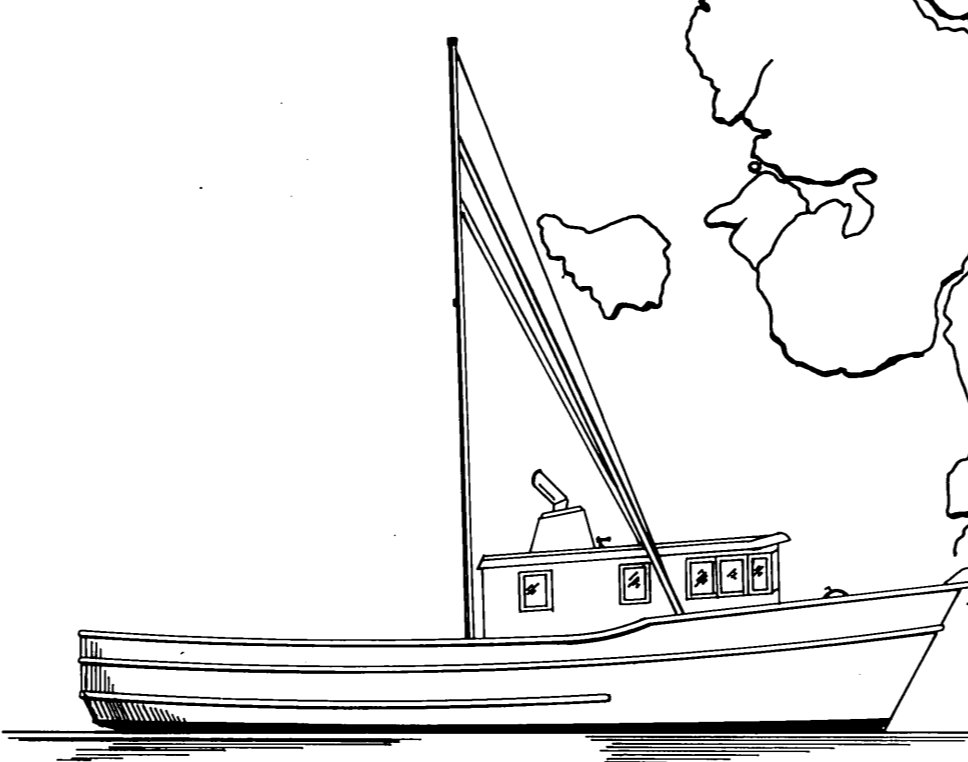
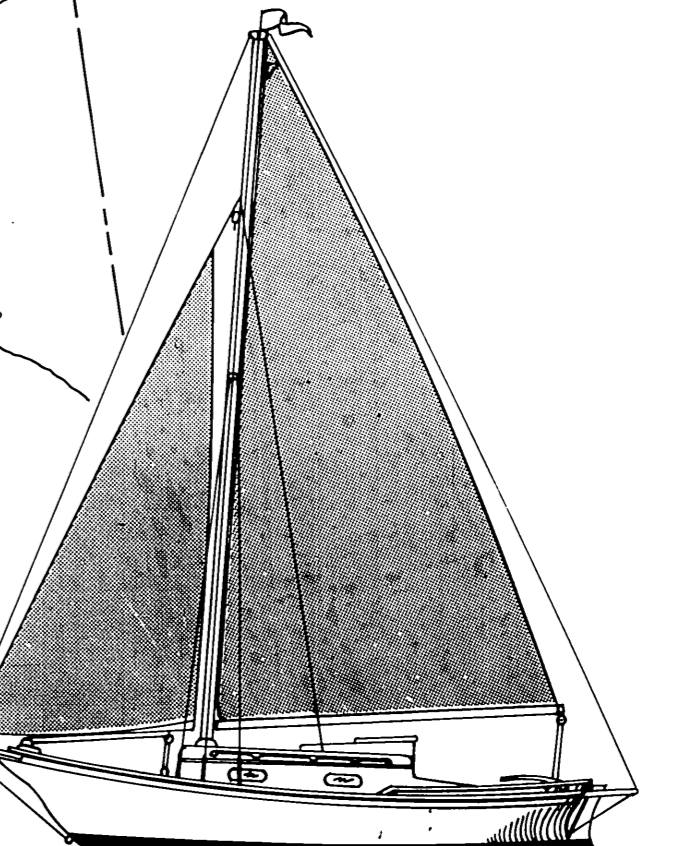
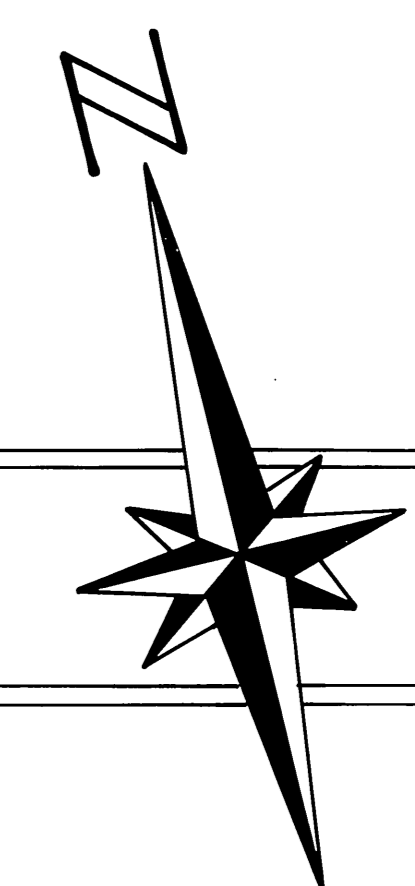
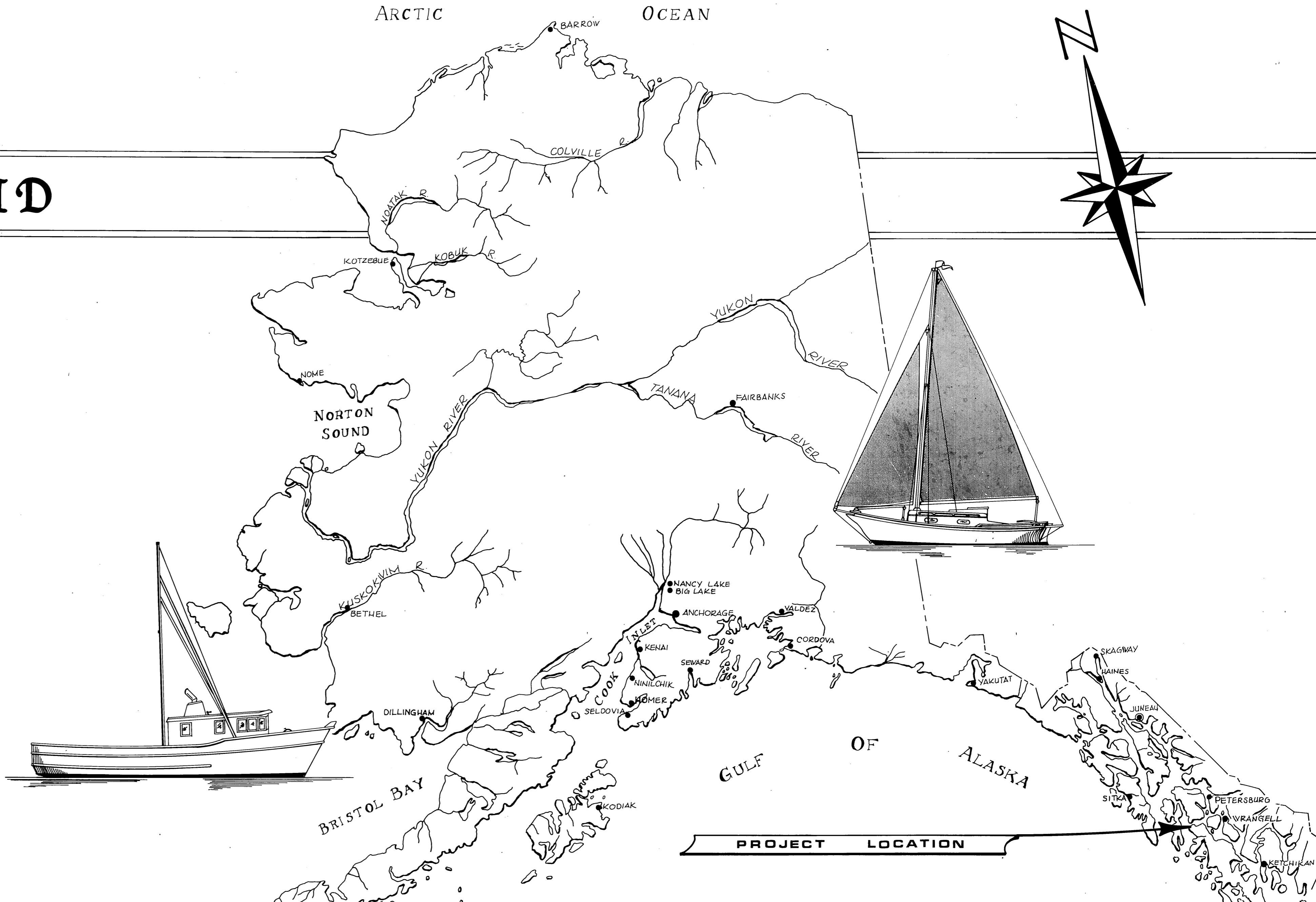
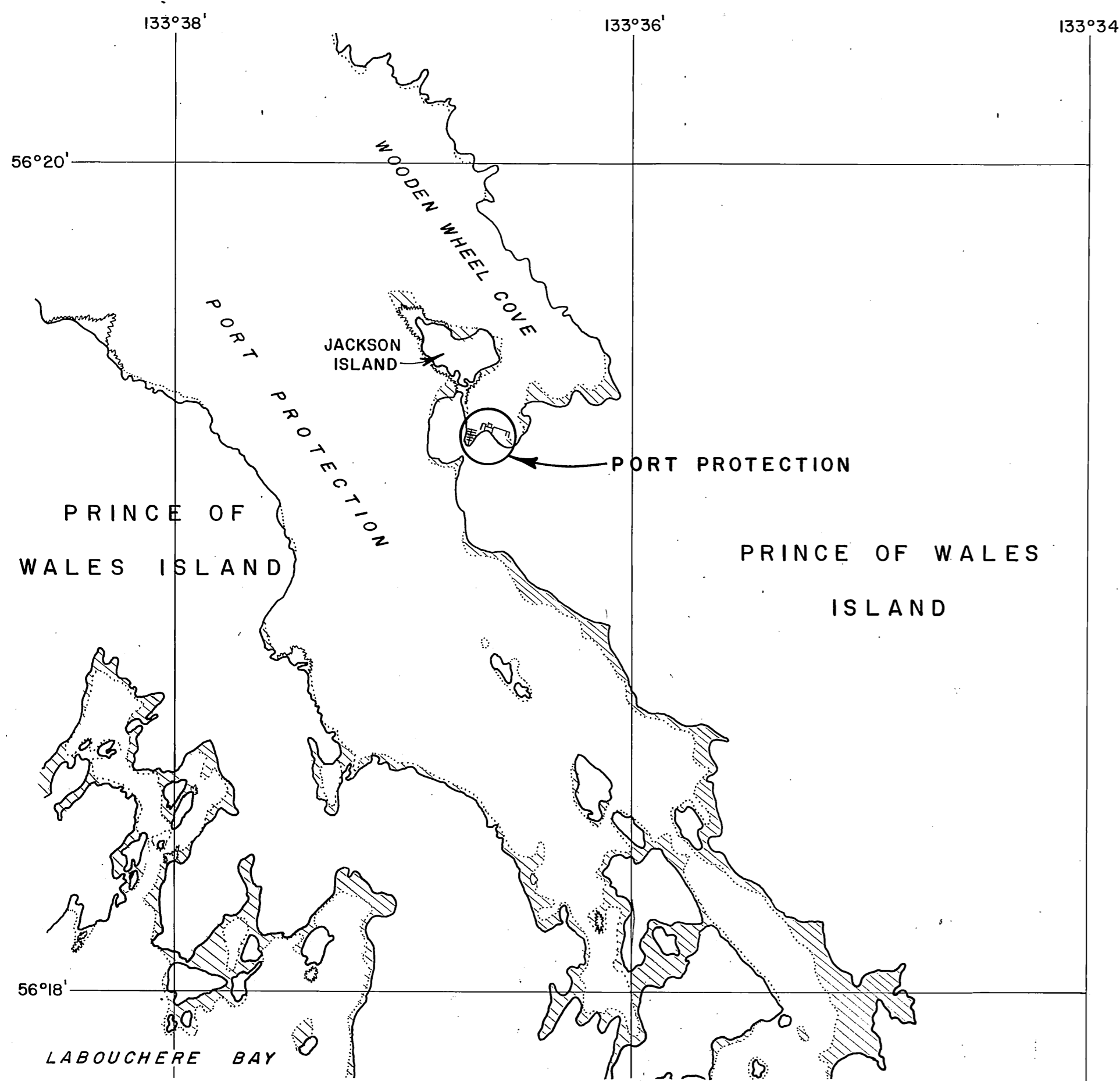
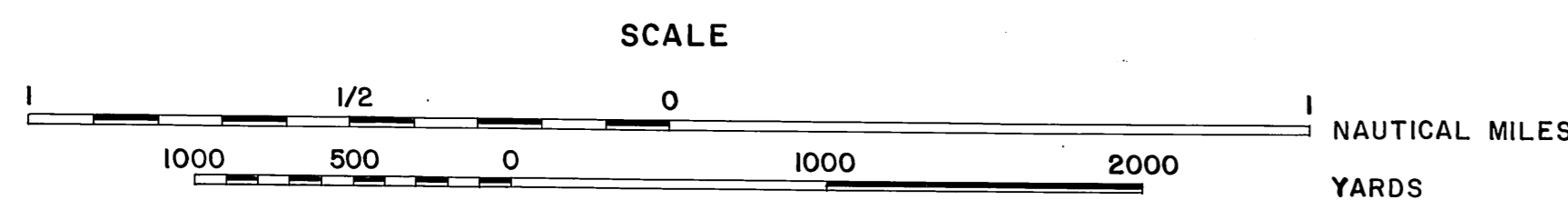


PORT PROTECTION GRID

PROJECT NO. K-31221

VICINITY MAP



PROJECT LOCATION

—WORK SUMMARY—

1. Grade original ground 2 feet below pile cutoffs to match slope of grid, an area approximately 80' x 54'.
2. Furnish material and construct east side of an eight bent grid.
3. Supplemental bids to furnish material and construct west side of grid.

AS BUILT

Start: April 29, 1985
 Stop: May 7, 1985
 Contractor: Artic Marine Constructors
 Project Engineer: Mark Halvorsen
 Date: July 18, 1983

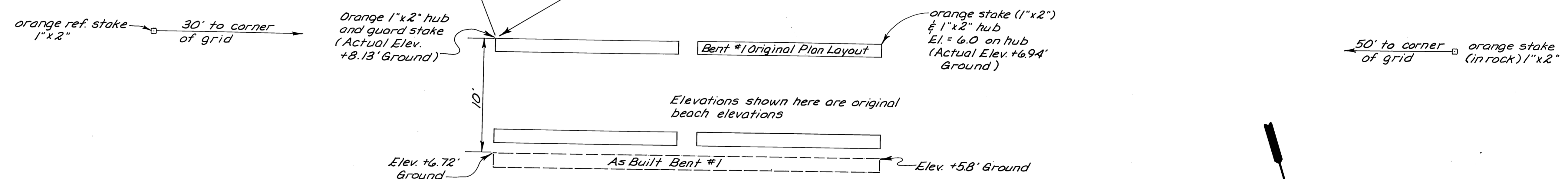
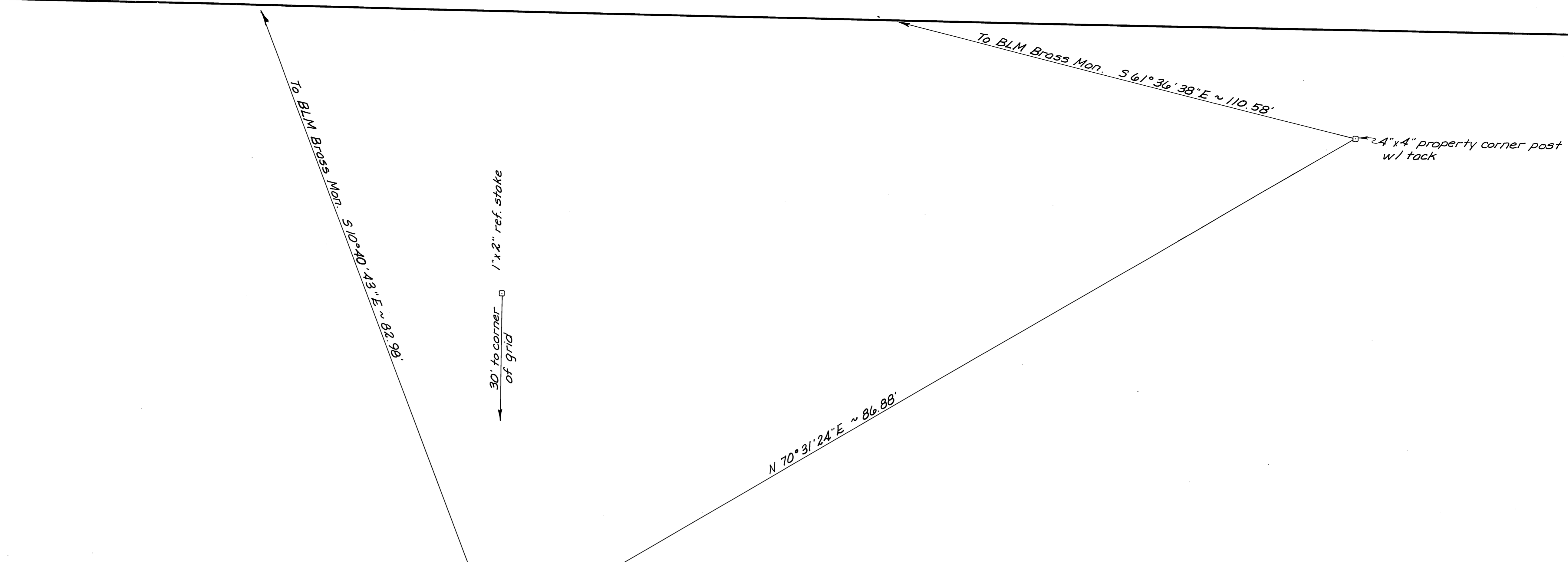
INDEX TO SHEETS

1.	Title Sheet		
2.	Grid Layout & Details		

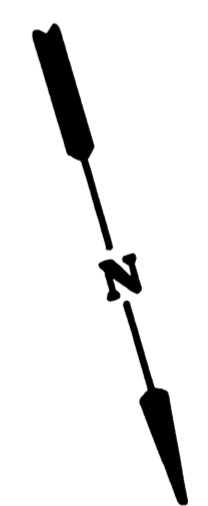
STATE OF ALASKA

DEPARTMENT OF TRANSPORTATION & PUBLIC FACILITIES
S.E. REGION
DESIGN & CONSTRUCTION

APPROVED
[Signature] 11/5/84
 DIRECTOR S.E. D. & C. DATE
 RECOMMEND FOR APPROVAL
[Signature] 11/5/84
 GROUP DESIGN CHIEF DATE
 SHEET 1 OF 2



NOTE: The entire Grid shifted down 10' the beach so it wasn't necessary to have to grade the beach down so deep to get the Planned Grid Elevation.



STAMP				DO NOT SCALE THIS DRAWING - USE DIMENSIONS			
				STATE OF ALASKA			
				DEPARTMENT OF TRANSPORTATION AND PUBLIC FACILITIES			
				Port Protection		Alaska	
				AS BUILTS			
DESIGNED	CHECKED	DRAWN	DATE	B.E.G.	7-85		
PROJECT NUMBER		K31221		SHEET		3 OF 3	