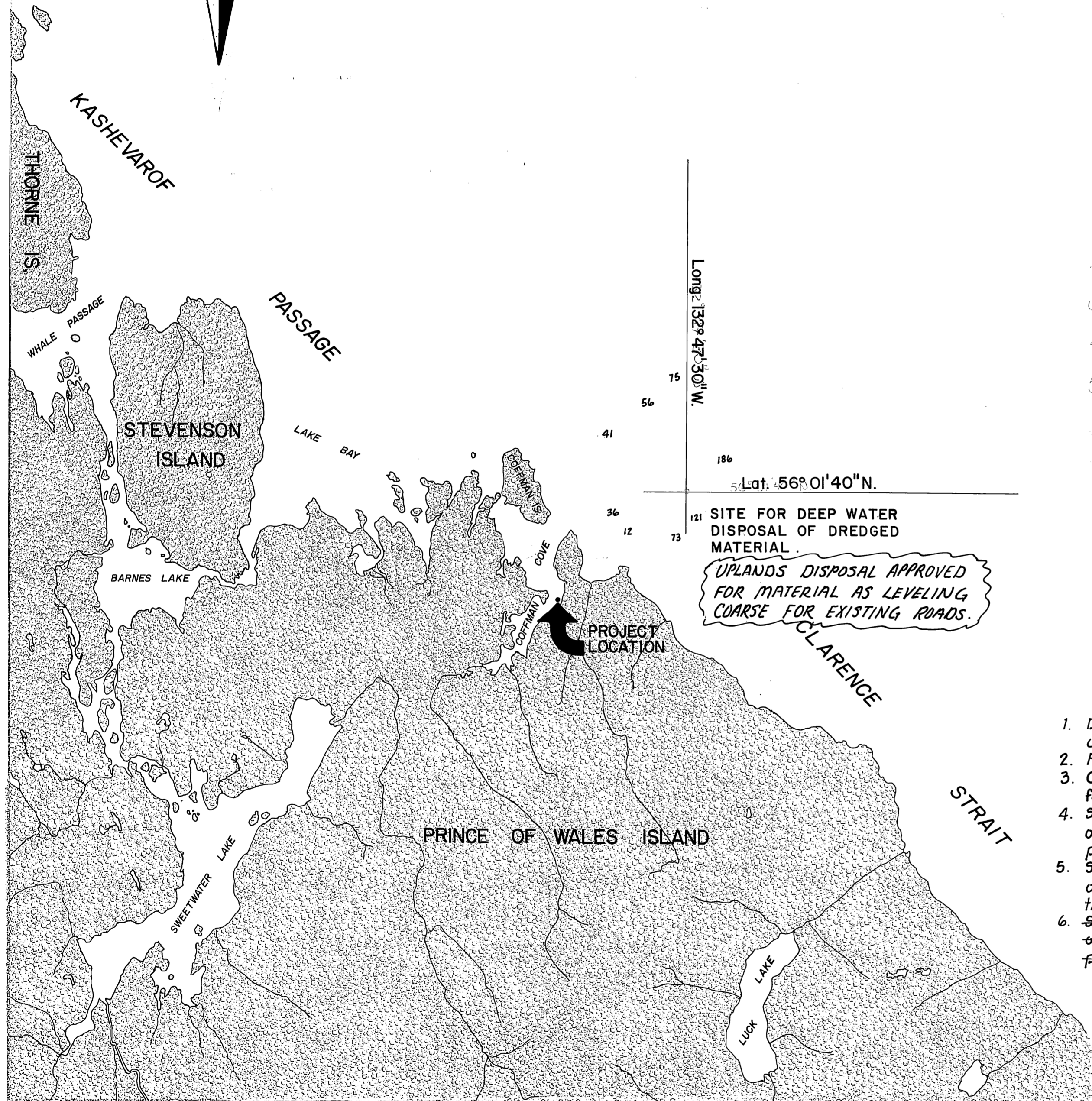


COFFMAN COVE DOCK PROJECT NO. K-31031

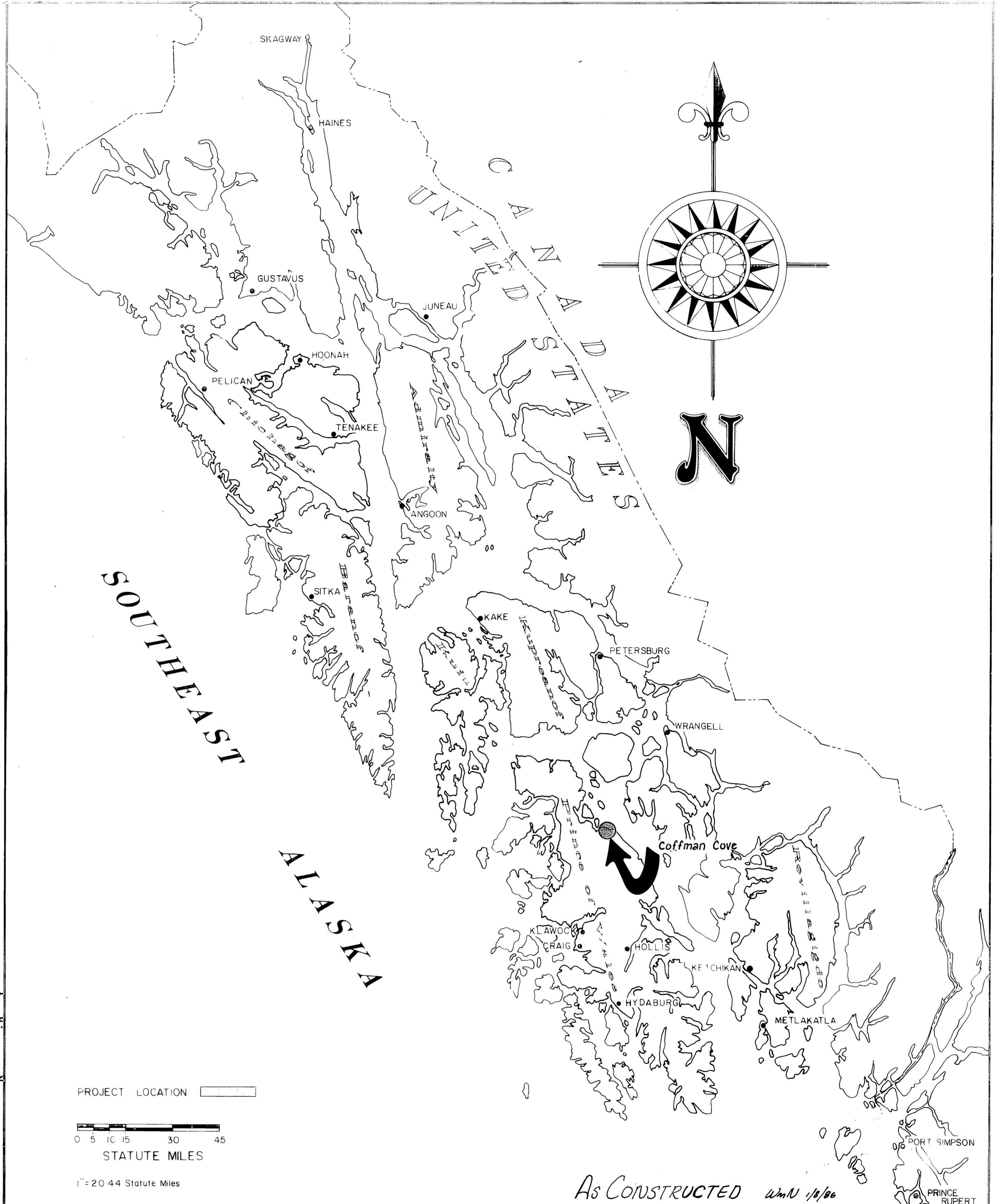
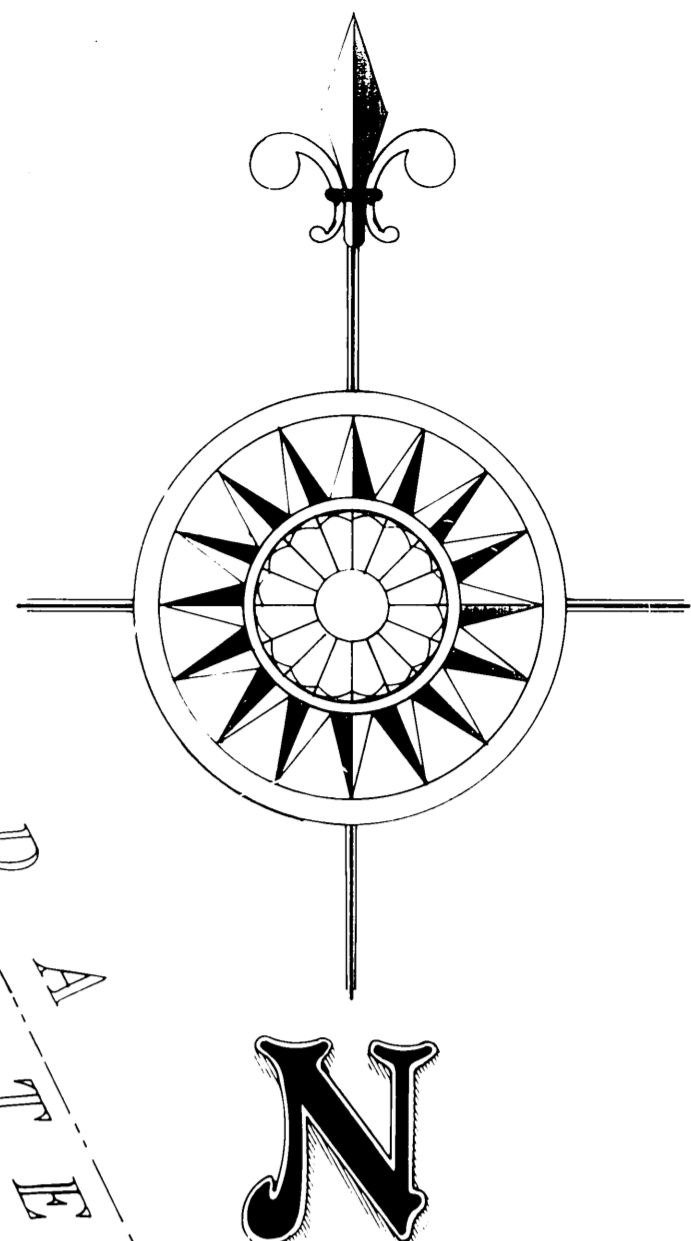


Long: 132° 47' 30" W
Lat: 56° 01' 40" N

1	
2	
3	
4	
5	
6	
7	
8	
9	
10	
11	
12	
13	
14	
15	
16	
17	
18	
19	
20	
21	
22	
23	
24	
25	
26	
27	
28	
29	
30	
31	
32	
33	
34	
35	
36	
37	
38	
39	
40	
41	
42	
43	
44	
45	
46	
47	
48	
49	
50	
51	
52	
53	
54	
55	
56	
57	
58	
59	
60	
61	
62	
63	
64	
65	
66	
67	
68	
69	
70	
71	
72	
73	
74	
75	
76	
77	
78	
79	
80	
81	
82	
83	
84	
85	
86	
87	
88	
89	
90	
91	
92	
93	
94	
95	
96	
97	
98	
99	
100	

WORK SUMMARY

- BASIC BID**
1. Dredge and deepwater dispose of approx. 700 C.V. of material.
 2. Furnish and drive 6 timber and 6 steel piles.
 3. Construct 4389 S.F. of timber floats and furnish 8 additional flotation planks.
 4. Supplemental Bid "A" consists of constructing 685 S.F. of timber floats and furnishing and driving two timber piles.
 5. Supplemental Bid "B" consists of constructing 484 S.F. of timber floats and furnishing and driving one timber pile.
 6. Supplemental Bid "C" consists of constructing 685 S.F. of timber floats and furnishing and driving one timber pile.



PROJECT LOCATION

0 5 10 15 30 45
STATUTE MILES

1" = 20.44 Statute Miles

As CONSTRUCTED WmN 1/1/86

STATE
OF
ALASKA

DEPARTMENT OF TRANSPORTATION
& PUBLIC FACILITIES
S.E. REGION DESIGN & CONSTRUCTION

APPROVED

R. Dieckmeyer 3-27-85
Director S.E. D.&C. Date

Recommend
for Approval

Steven O. Bradford 3-27-85
Group Design Chief Date

SHEET 1 of 8

INDEX TO SHEETS

1. TITLE SHEET			
2. EXISTING AND PROPOSED LAYOUTS			
3. MISC. LAYOUTS			
4. FLOATING DOCK DETAILS			
5. TYPICAL 10' WIDE FLOAT			
6. CONNECTION DETAILS			
7. 17' & 23' STALL FLOAT DETAILS			
8. MISC. HARDWARE			

PROJECT &
FILE NO.

As Constructed Notes:

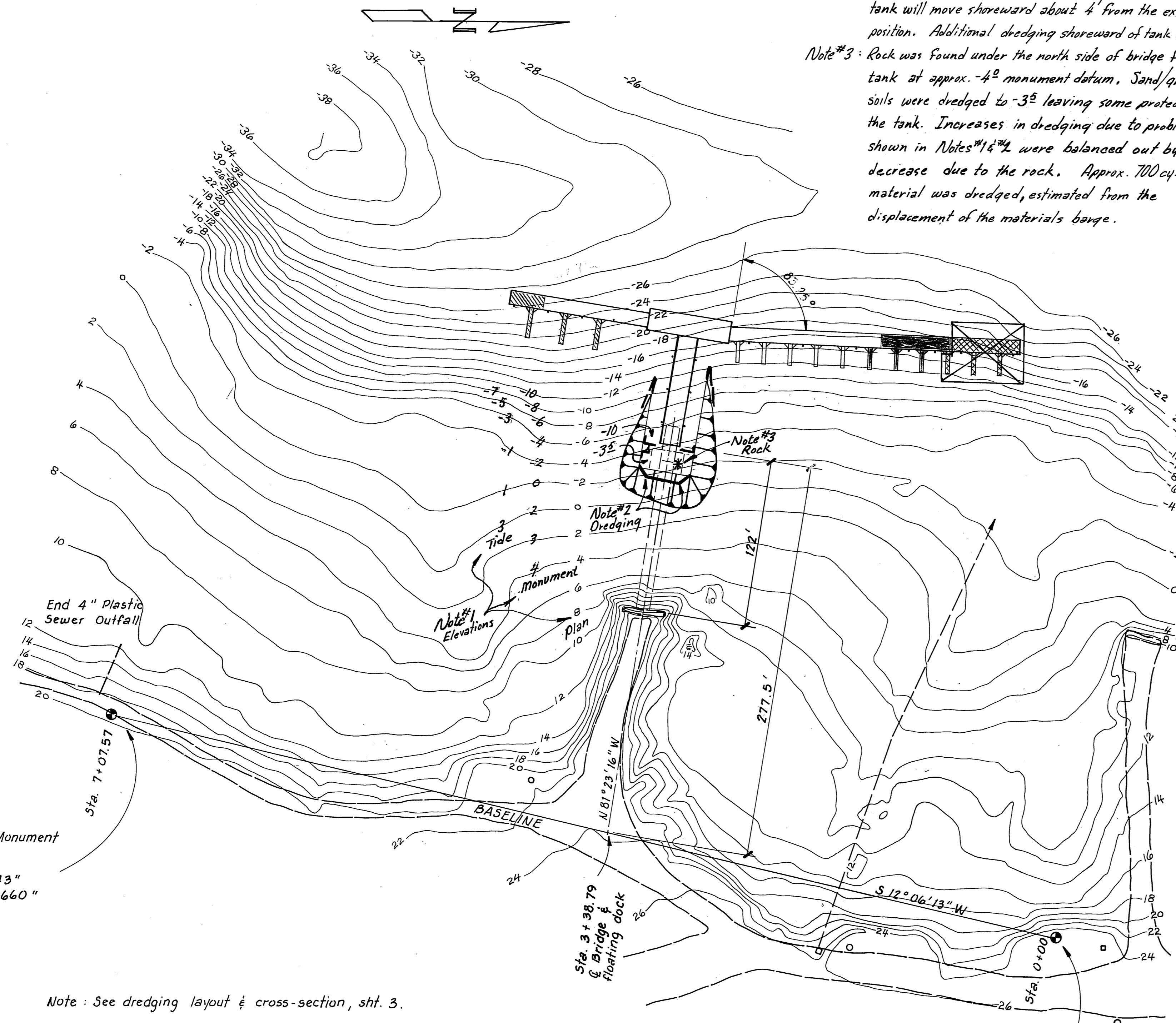
Note #1: Monument shows approx. contours relative to Alum. monument (elev 26.53) @ dredge area, "Tide" shows approx. contours relative to predicted low tides which are one foot lower than "monument", but the predicted high tides are about one foot higher than "monument". "Plan" are contours shown in original contract drawings.

Note #2: Bridge is shown in highest (extended) position on this dwg. & also on sht. 3 of 8. At low tide the bridge flotation tank will move shoreward about 4' from the extended position. Additional dredging shoreward of tank was reqd.

Note #3: Rock was found under the north side of bridge flotation tank at approx. -4' monument datum. Sand/gravel soils were dredged to -3' leaving some protection for the tank. Increases in dredging due to problems shown in Notes #1 & 2 were balanced out by the decrease due to the rock. Approx. 700 cy. of material was dredged, estimated from the displacement of the materials barge.

TIDE DATA

EHW 21.3
MHHW 15.9
MHW 15.0
MLLW 0.0
ELW -4.5

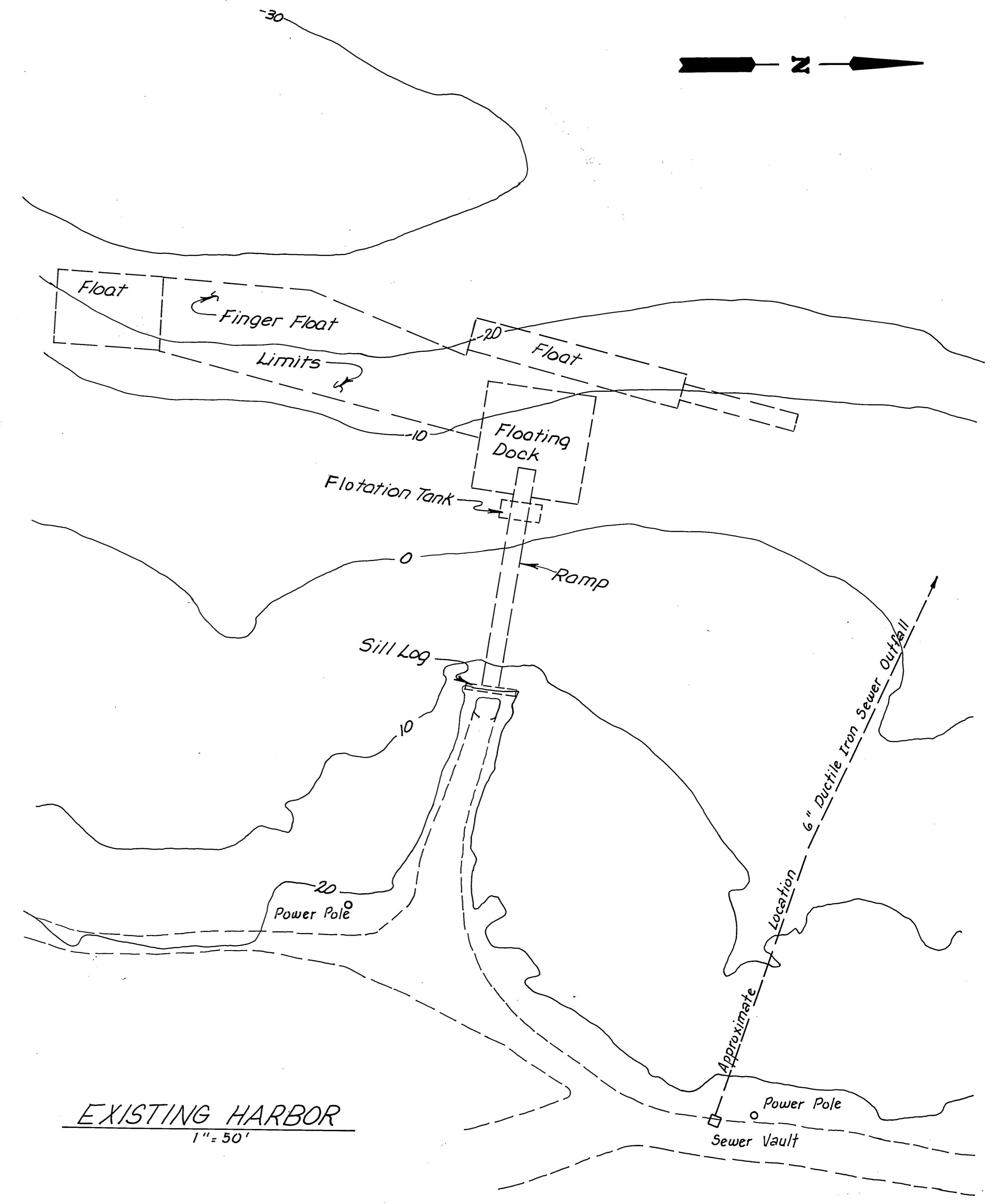


3/4" Alum. Pipe Monument
N 1526701.86
E 2856994.40
Lat. 56°00'36.943"
Long. 132°49'45.660"
(NAD 1927)
Elev. +20.13
Not Found

Note: See dredging layout & cross-section, sht. 3.

PROPOSED HARBOR
1" = 50'

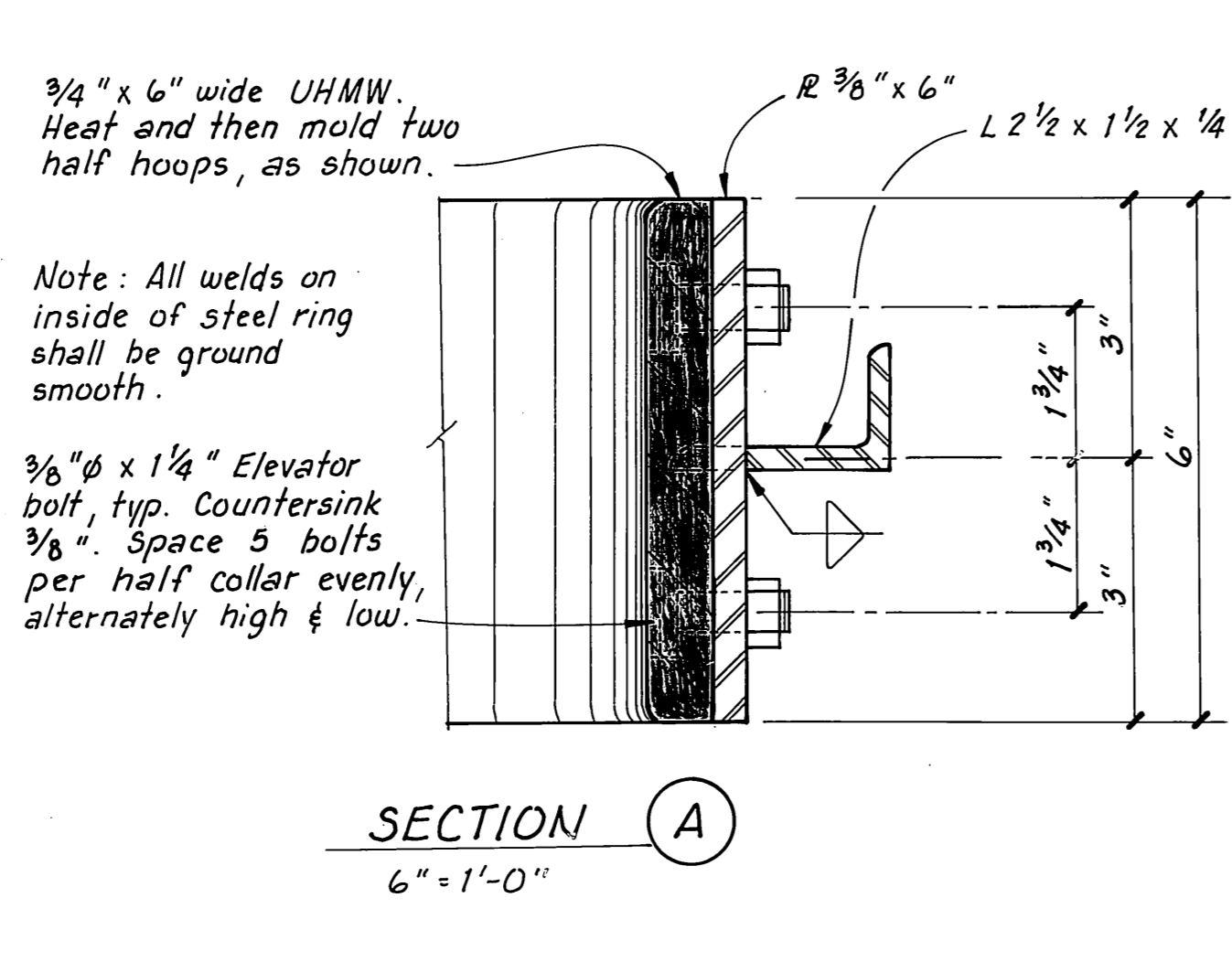
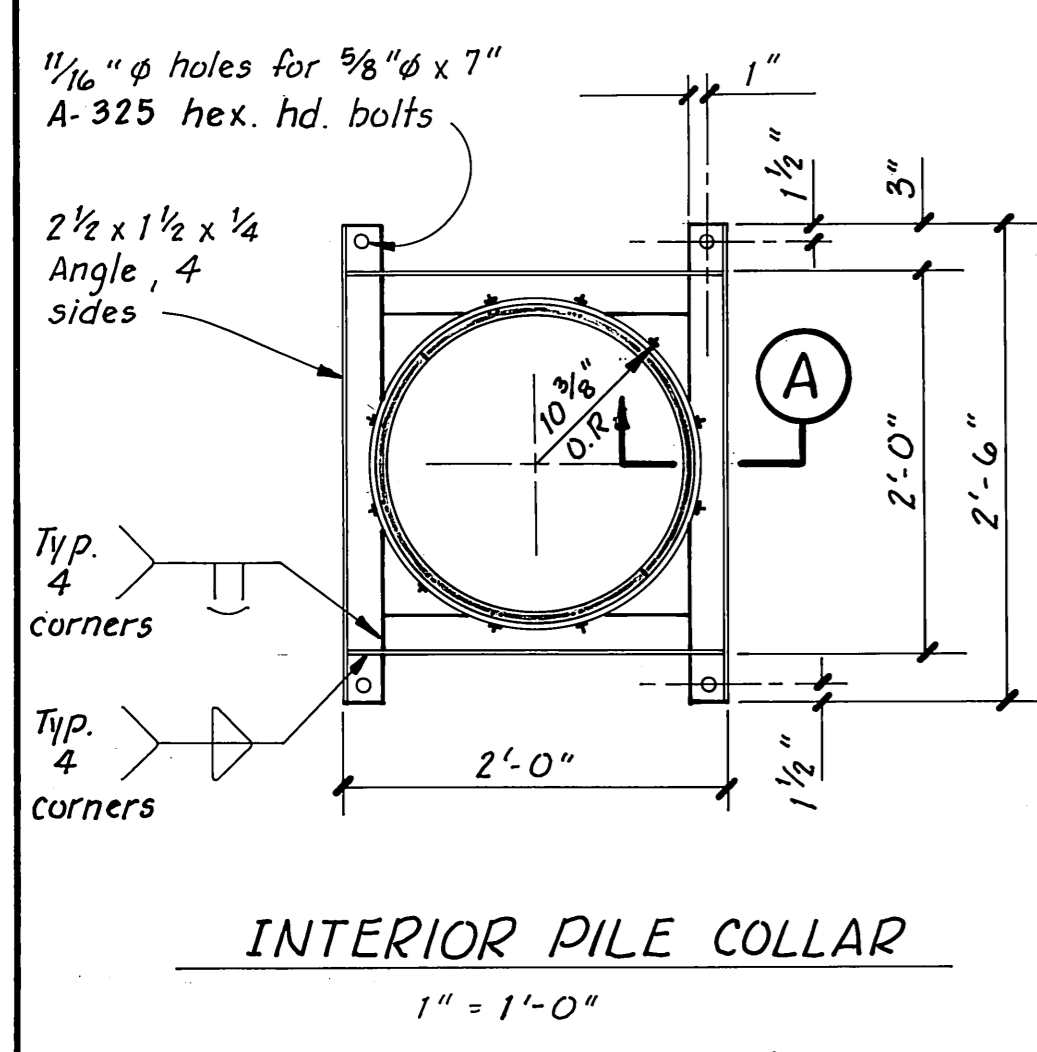
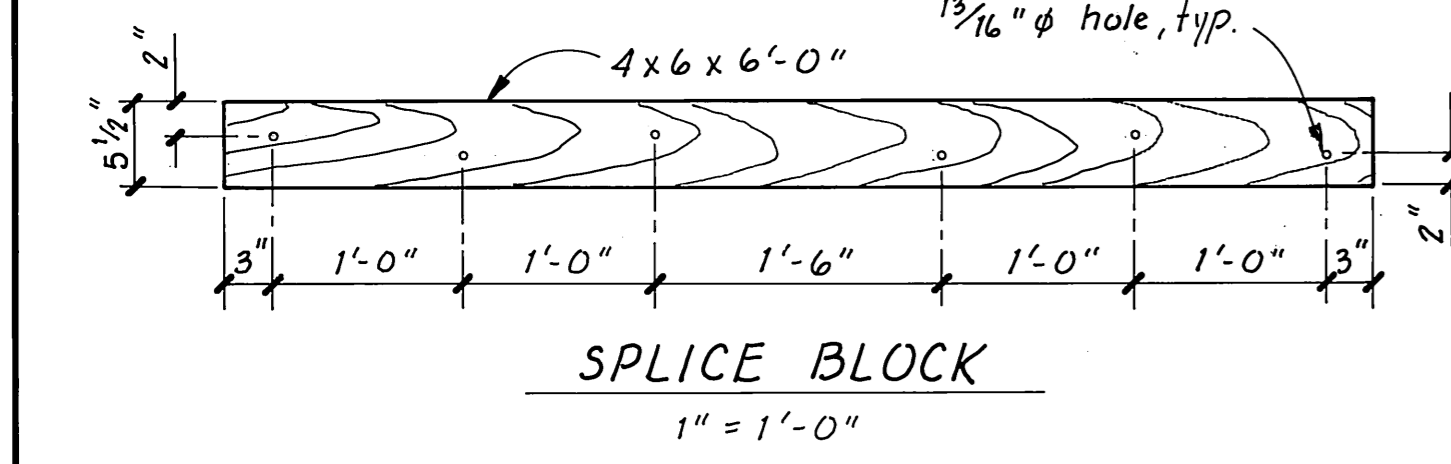
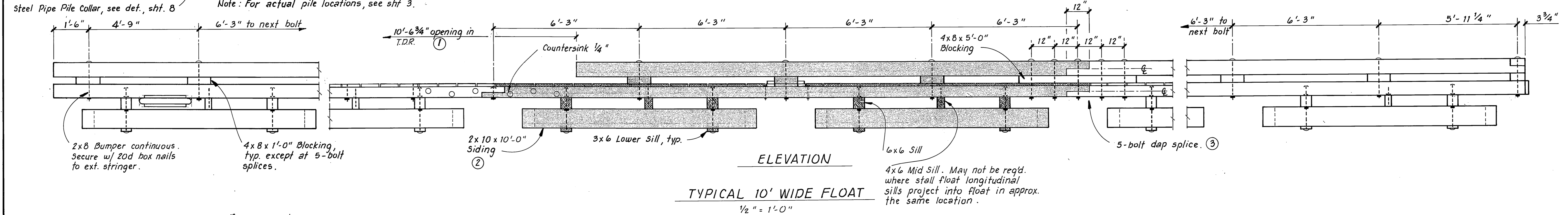
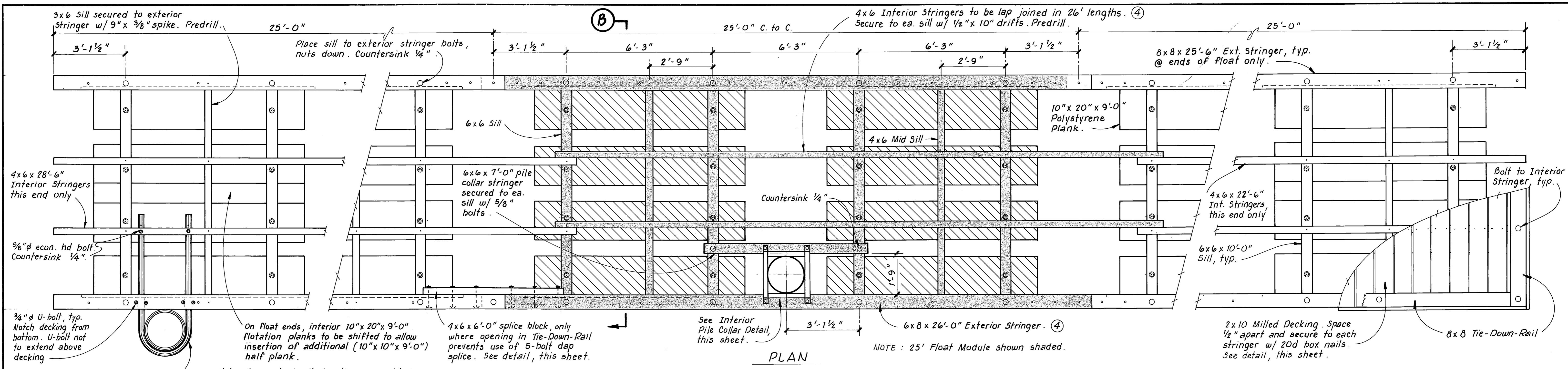
3/4" Alum. Pipe Monument
N 1527393.70
E 2857142.77
Lat. 56°00'43.743"
Long. 132°49'42.901"
(NAD 1927)
Elev. +26.53
Monument Recovered and
Used As Vertical Datum



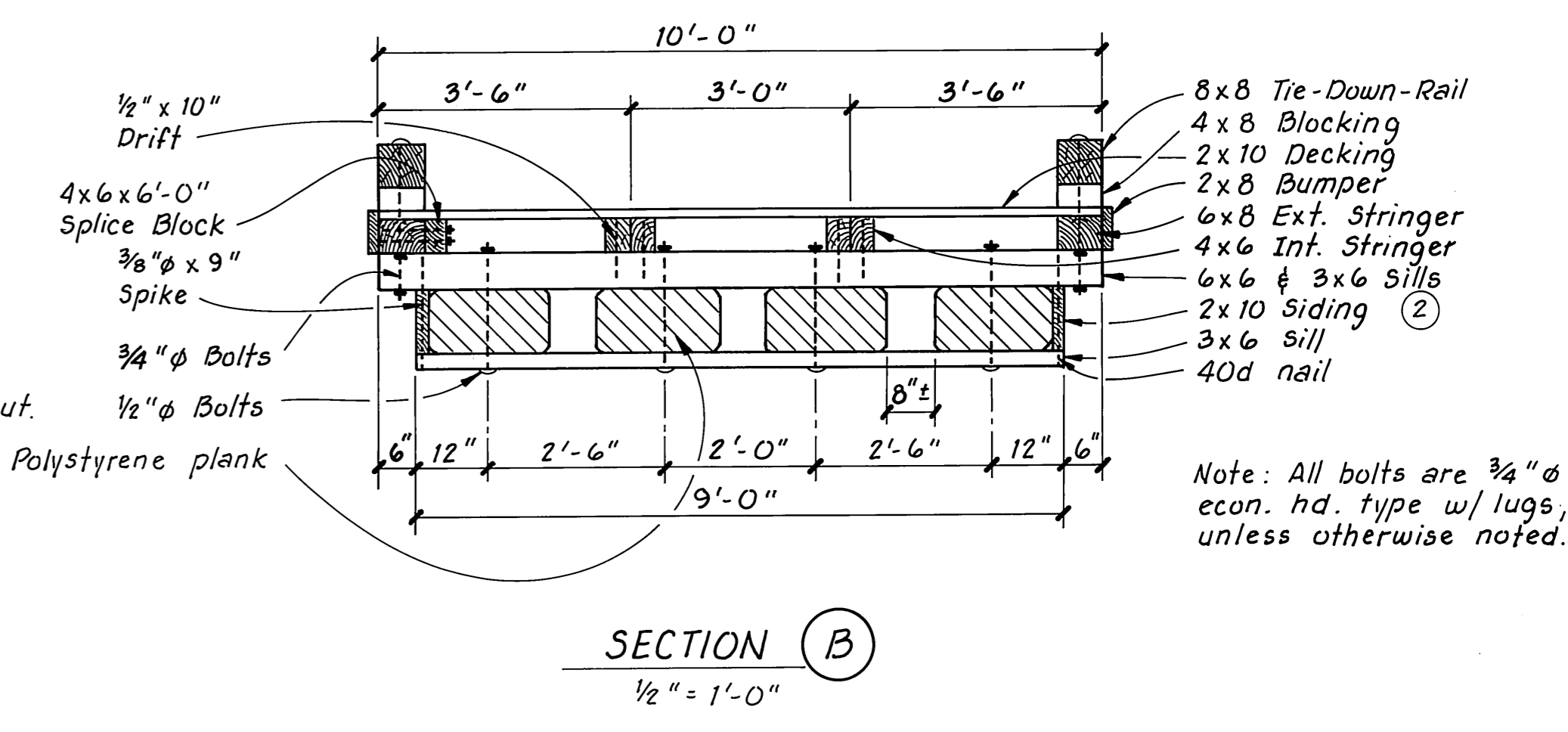
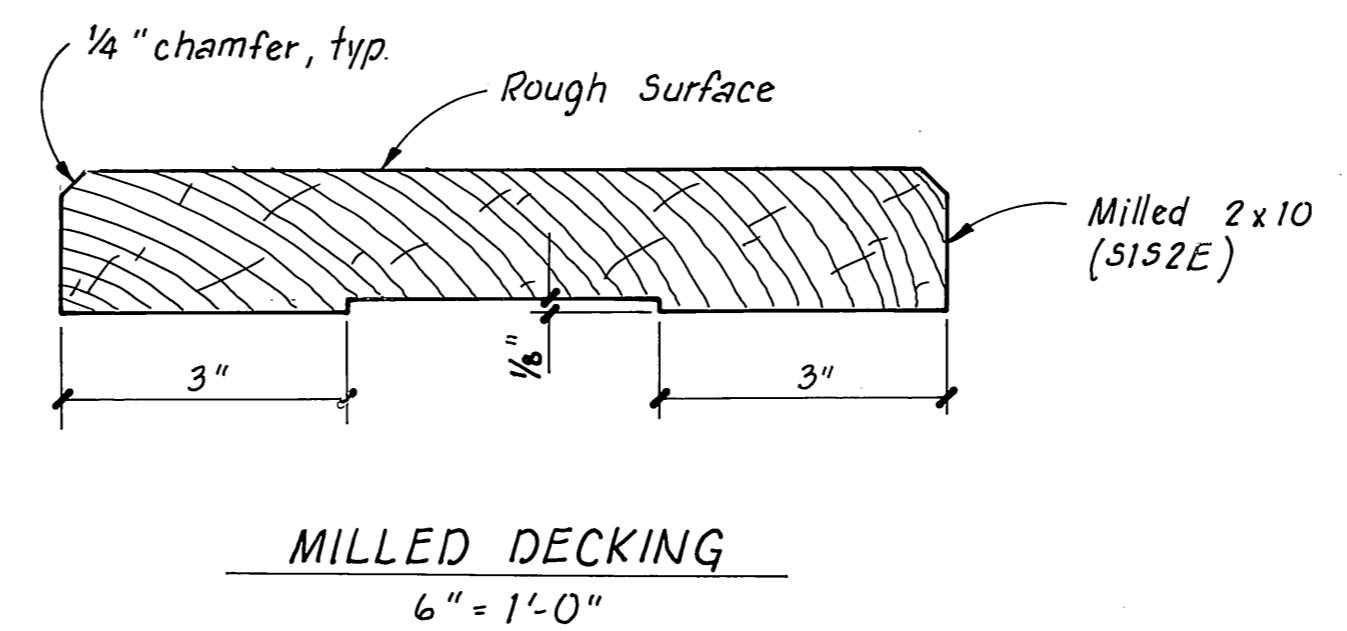
EXISTING HARBOR
1" = 50'

As Constructed W/M 1/8/86

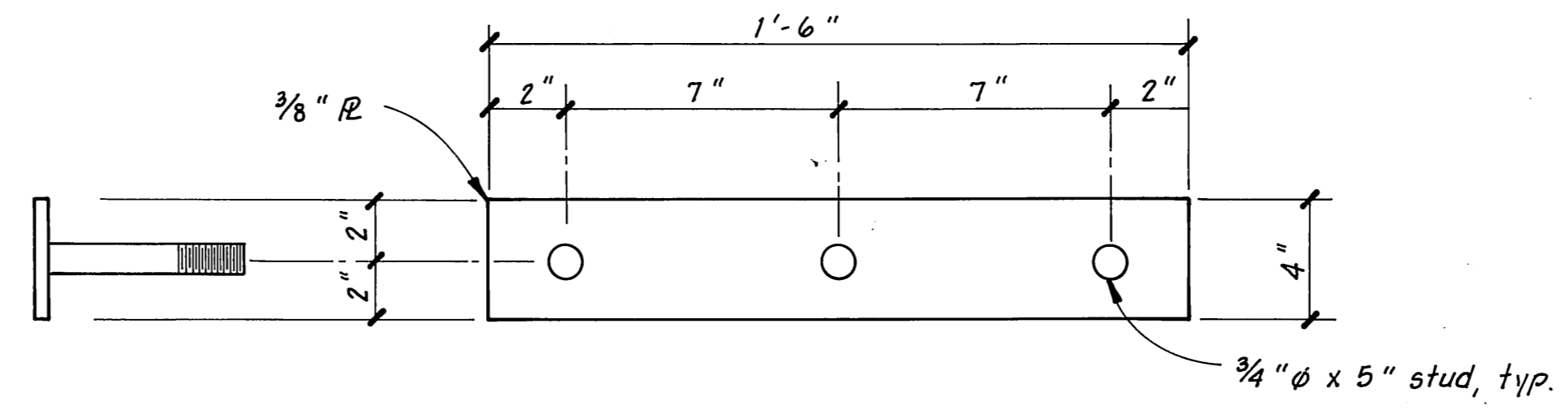
	DO NOT SCALE THIS DRAWING - USE DIMENSIONS			
	STATE OF ALASKA DEPARTMENT OF TRANSPORTATION AND PUBLIC FACILITIES			
	Coffman Cove		Alaska	
EXISTING & PROPOSED HARBOR LAYOUTS				
DESIGNED <u>RAM</u>	CHECKED _____	DRAWN <u>TS</u>	DATE <u>3/85</u>	
PROJECT NUMBER <u>K-31031</u>	SHEET <u>2</u> OF <u>8</u>			



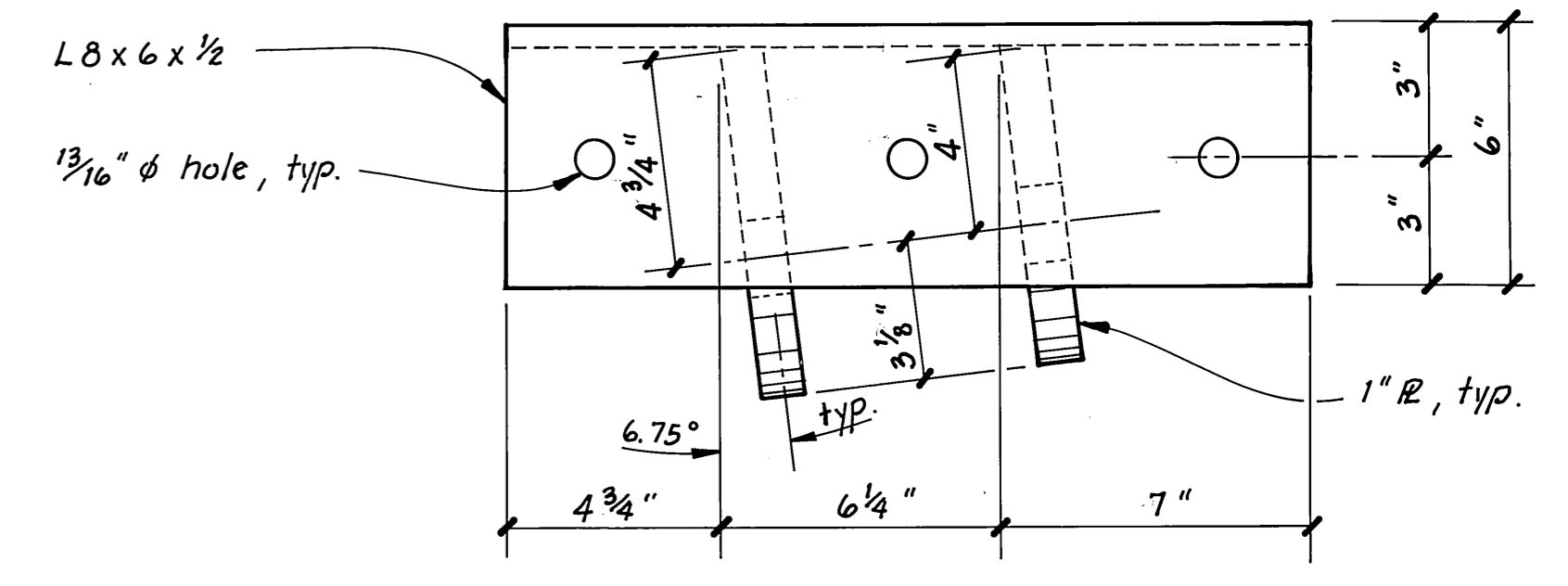
- NOTES**
- Opening in Tie-Down-Rail for access to stall float. See layout for locations.
 - 2x10 siding is a 2x12 (545) cut to 1 1/2" x 10 1/4".
 - The standard method for joining float modules is to dap join the tie-down-rails and exterior stringers and splice them together utilizing a 5-bolt splice. At some locations, where an opening in the tie-down-rail prevents the use of the standard splice, an alternate 7-bolt stringer splice with splice block is req'd. The standard spacing for splices is 25'-0" cen. to cen., except where non-standard 12'-6" half modules occur. See stringer layout.
 - Length varies on non-standard end modules and half modules.
 - All materials to be 5-A-5 except decking (Milled S1S2E) and 2x10 siding.



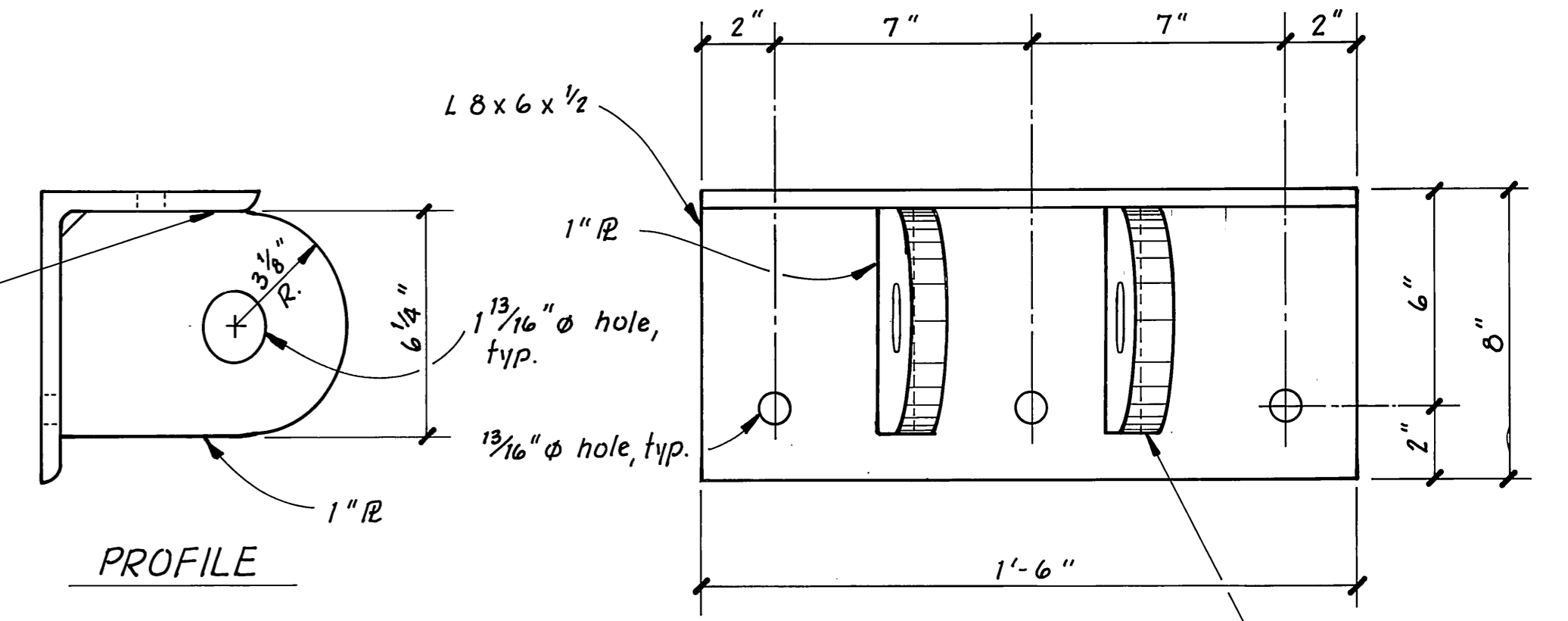
STAMP		DO NOT SCALE THIS DRAWING - USE DIMENSIONS	
STATE OF ALASKA DEPARTMENT OF TRANSPORTATION AND PUBLIC FACILITIES			
COFFMAN CURE		ALASKA	
TYPICAL 10' WIDE FLOAT			
DESIGNED <i>Staff</i>	CHECKED _____	DRAWN <i>TS</i>	DATE <i>3-85</i>
PROJECT NUMBER <i>K-31031</i>	SHEET <i>5</i> OF <i>8</i>		



BACK-UP R TYPE 4A - 4 REQ'D.
3" = 1'-0"



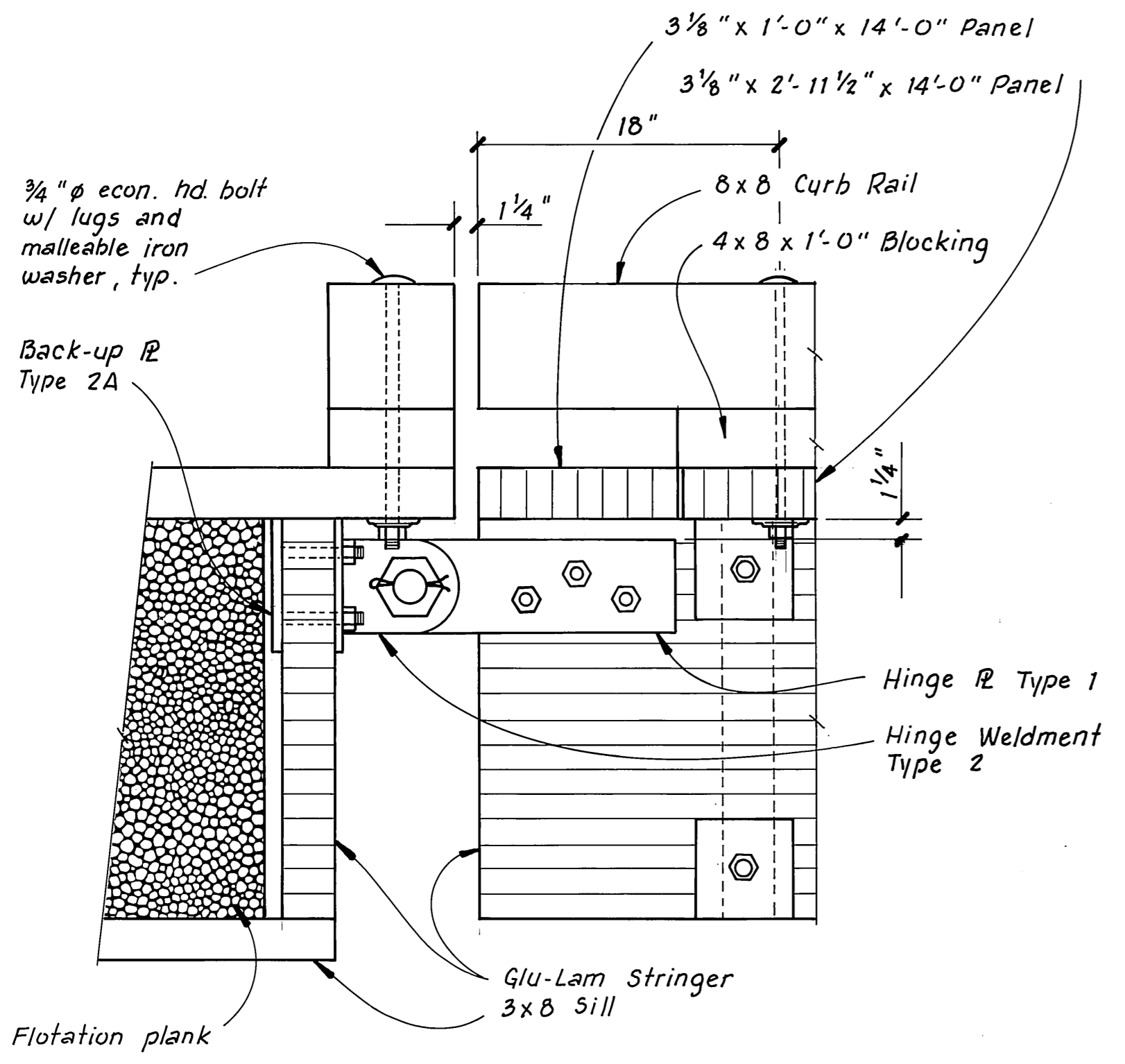
PLAN



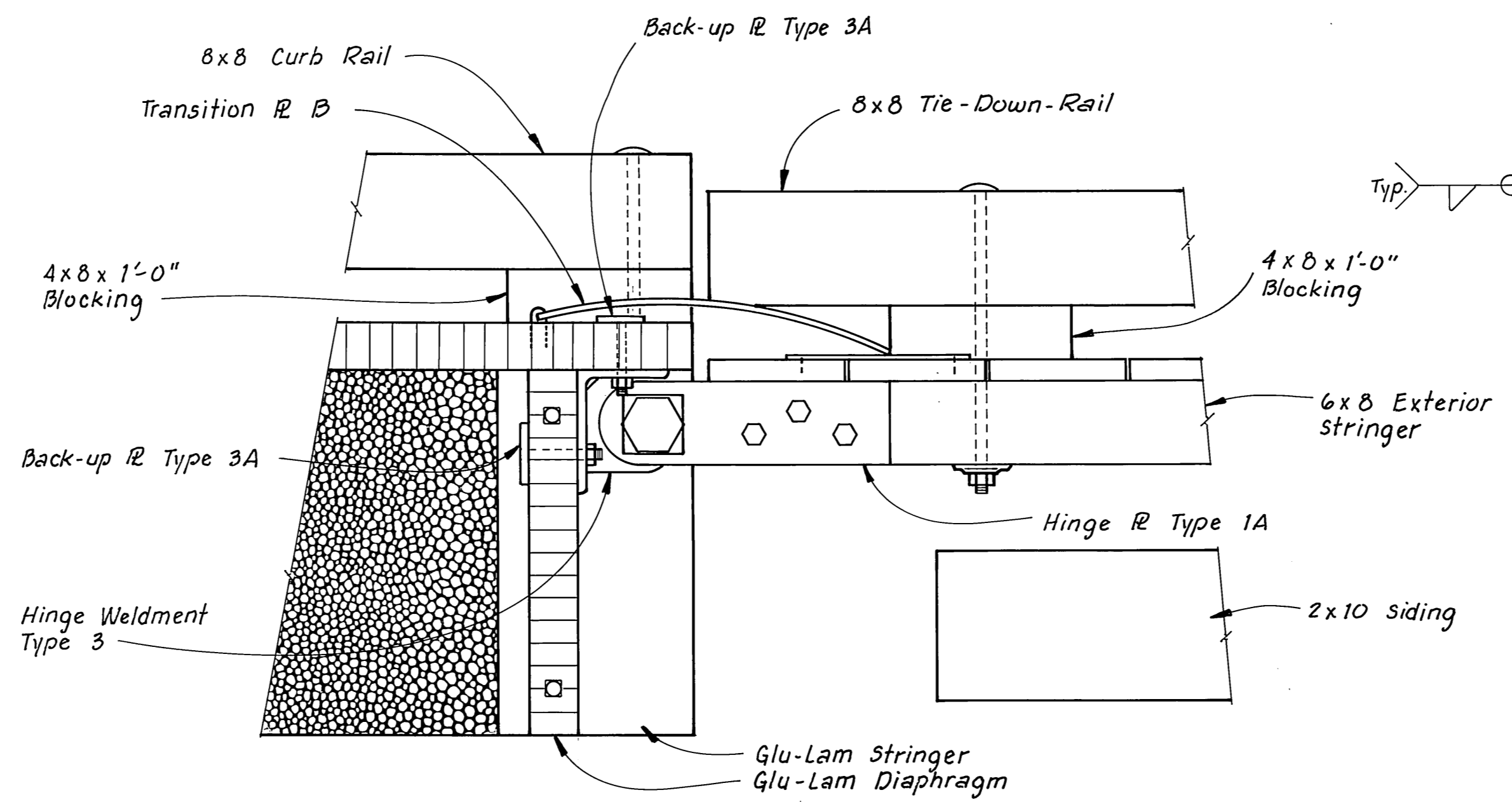
PROFILE

ELEVATION

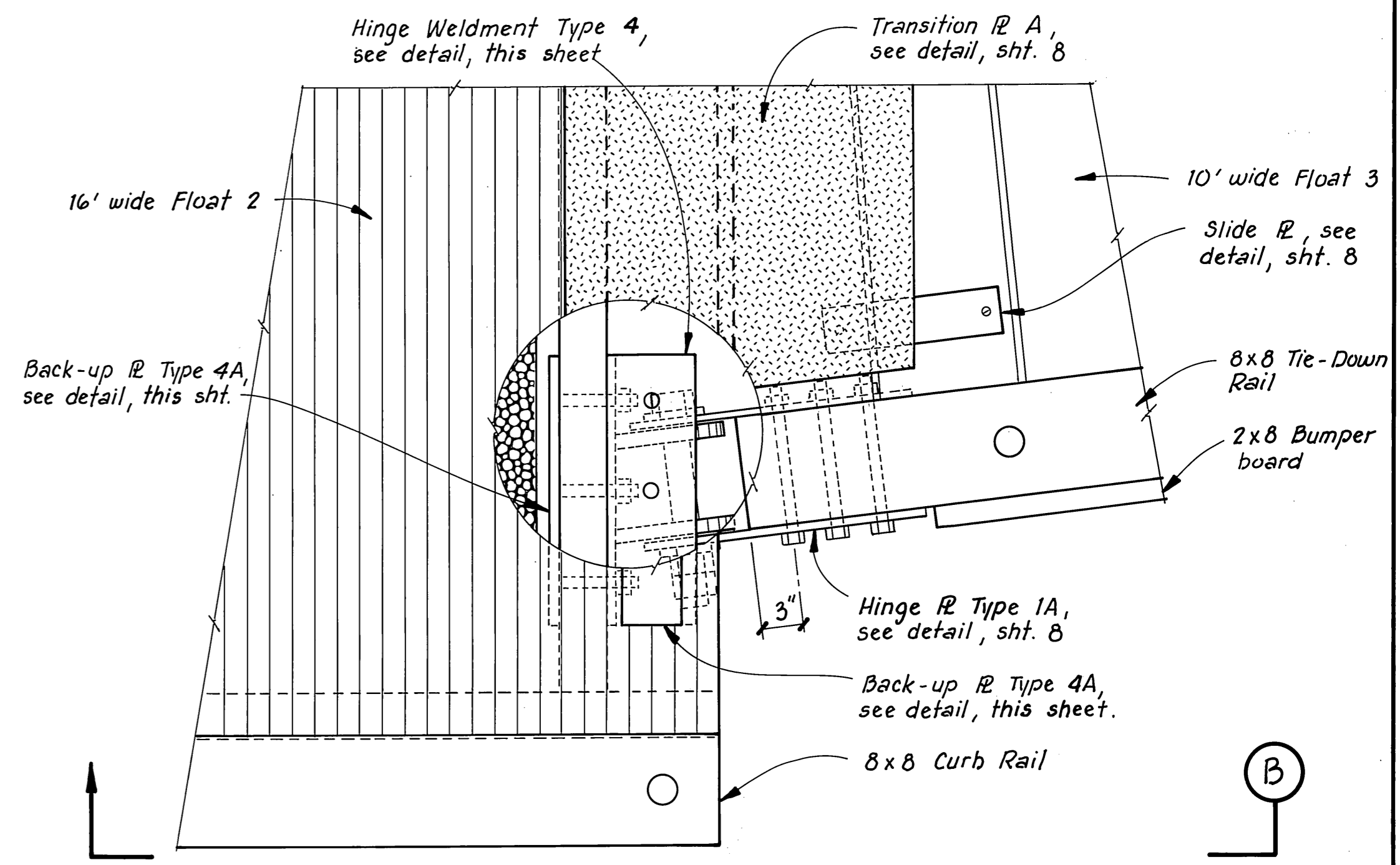
HINGE WELDMENT TYPE 4 - 2 REQ'D.
3" = 1'-0"



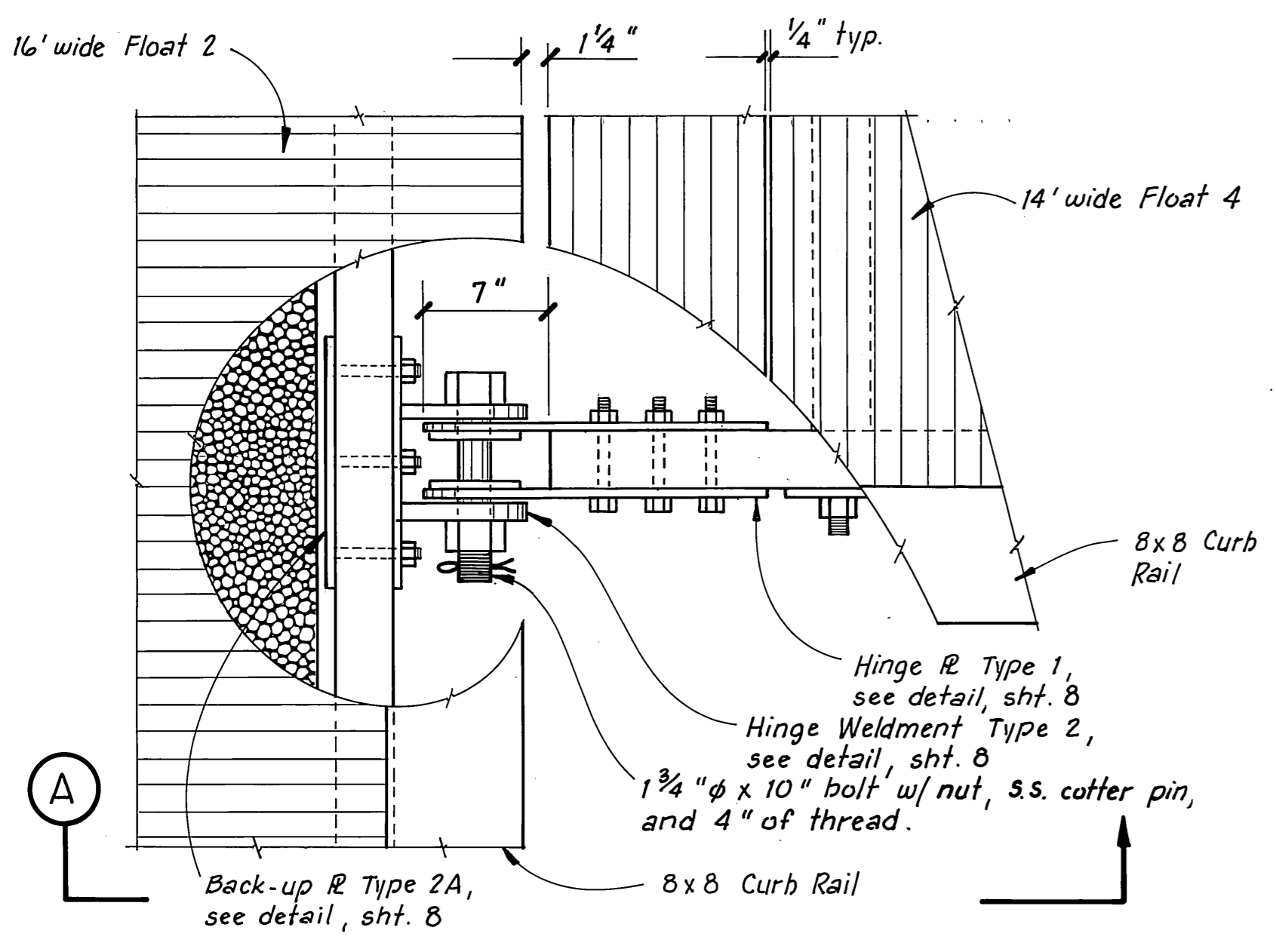
ELEVATION A
1 1/2" = 1'-0"



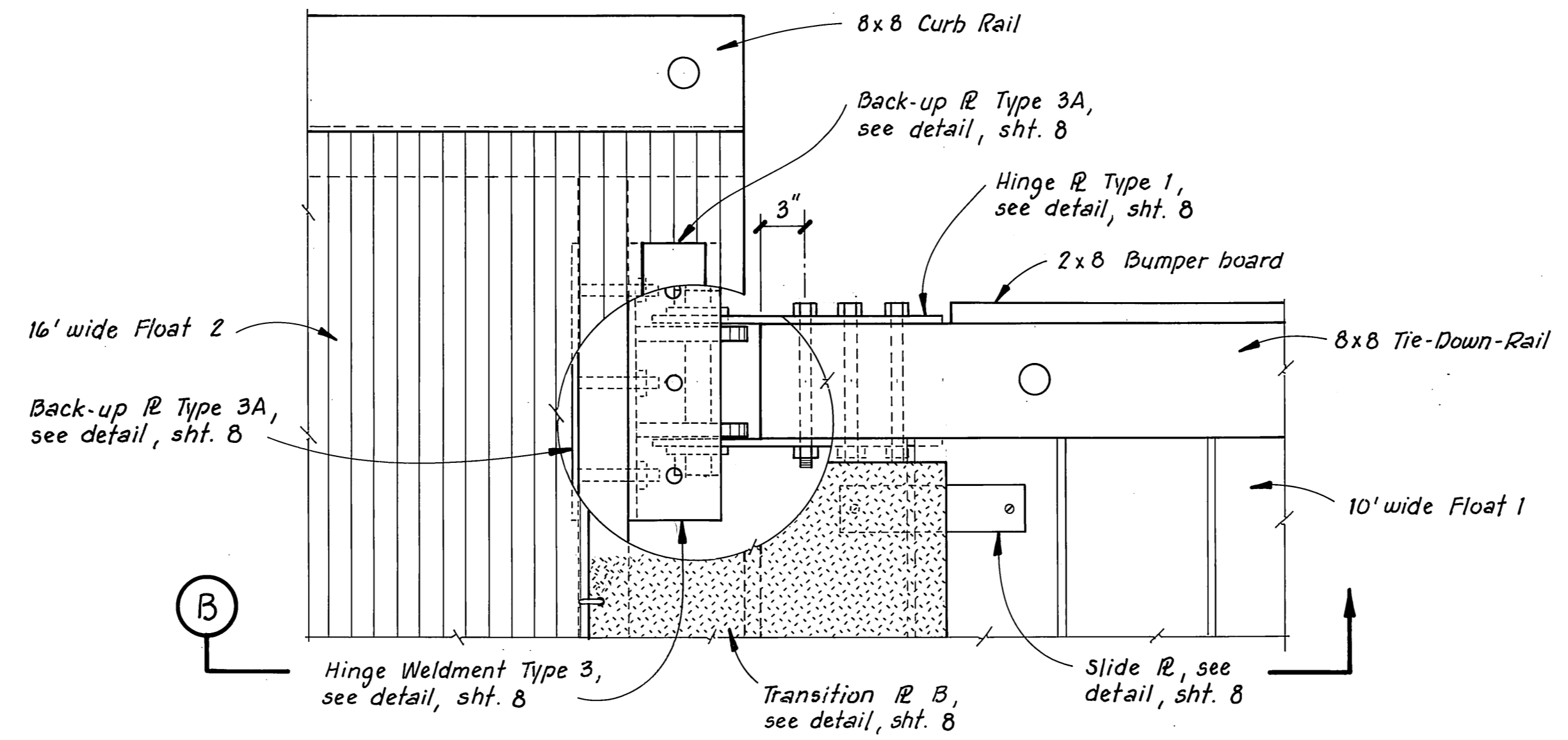
ELEVATION B
1 1/2" = 1'-0"



16' TO 10' WIDE FLOAT 3 HINGE DETAIL
1 1/2" = 1'-0"



16' TO 14' WIDE FLOAT HINGE DETAIL
1 1/2" = 1'-0"



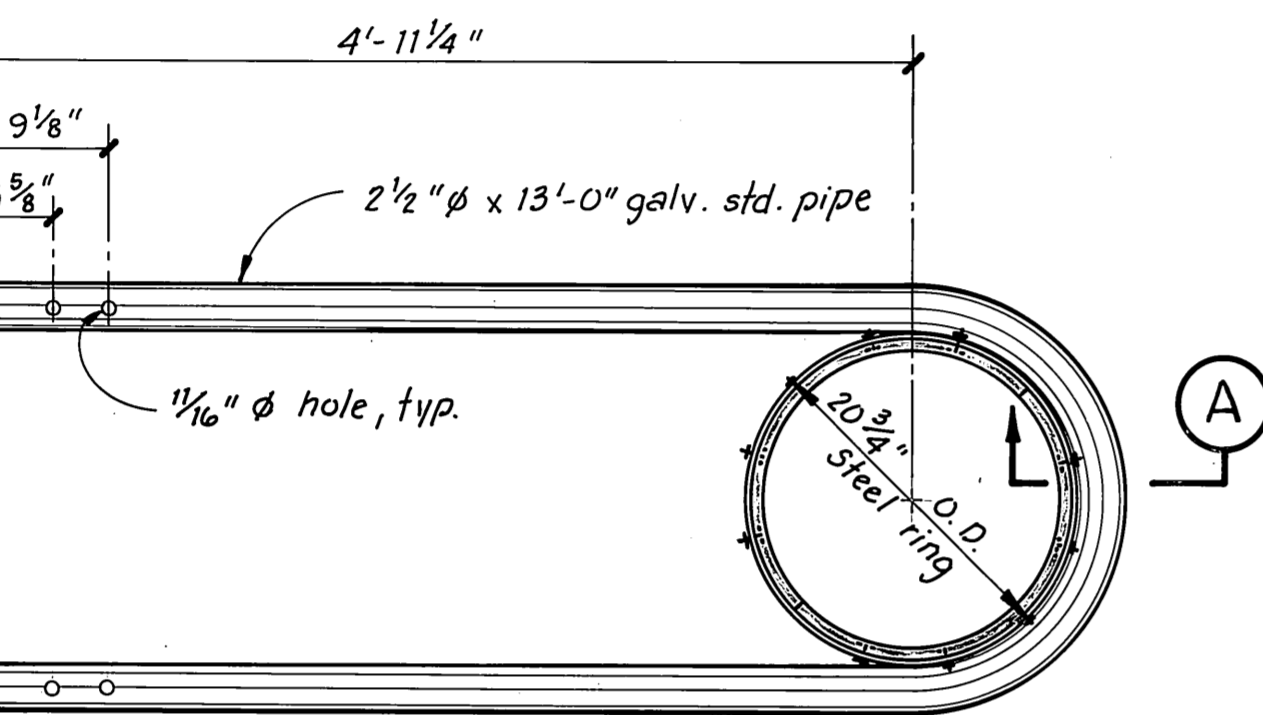
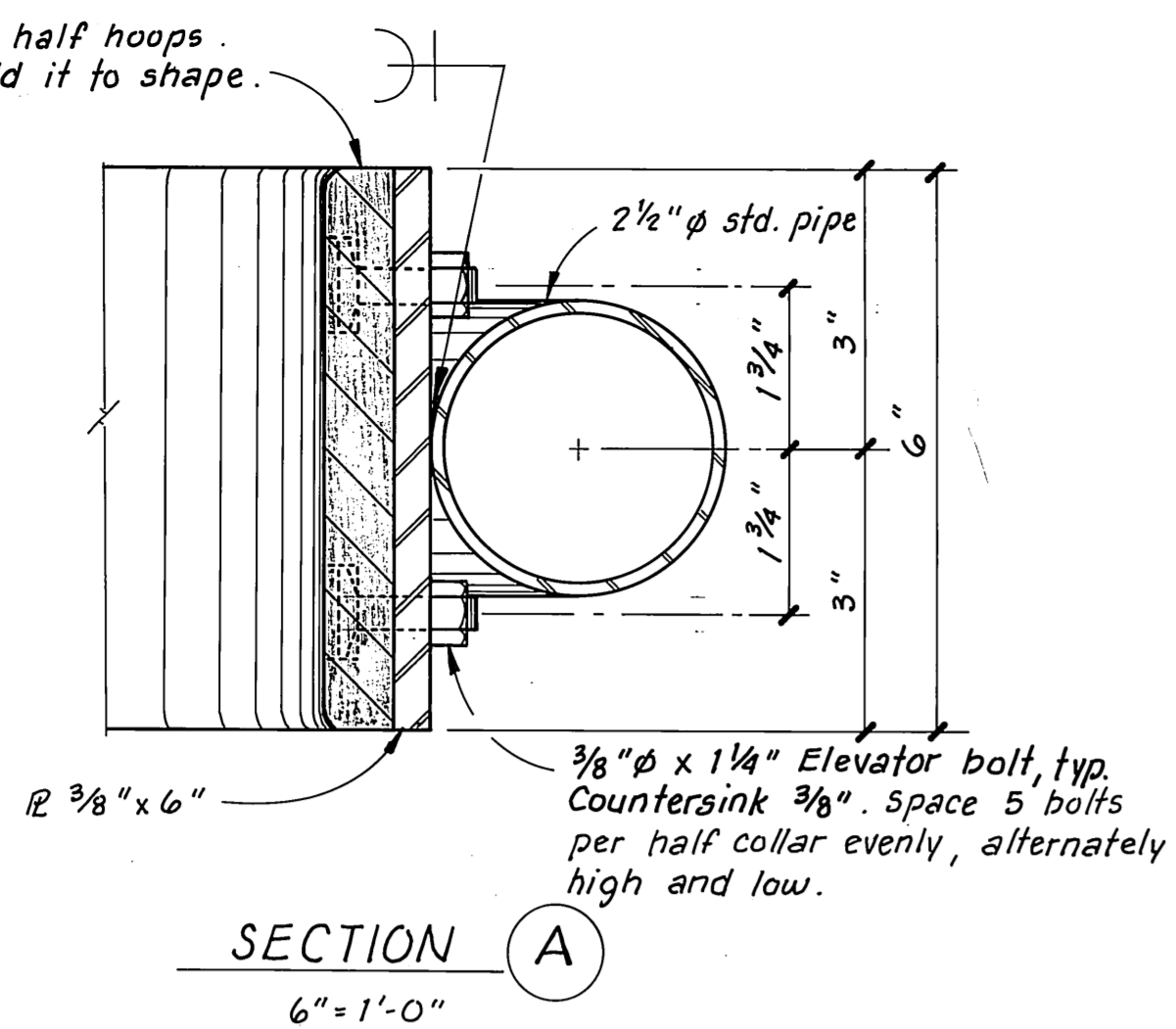
16' TO 10' WIDE FLOAT 1 HINGE DETAIL
1 1/2" = 1'-0"

As Constructed w/m 1/4/86

STAMP		DO NOT SCALE THIS DRAWING - USE DIMENSIONS	
STATE OF ALASKA			
DEPARTMENT OF TRANSPORTATION AND PUBLIC FACILITIES			
Coffman Cove		Alaska	
CONNECTION DETAILS			
DESIGNED <u>RAM</u>	CHECKED _____	DRAWN <u>TS</u>	DATE <u>2-85</u>
PROJECT NUMBER <u>K-31031</u>	SHEET <u>6</u> OF <u>8</u>		

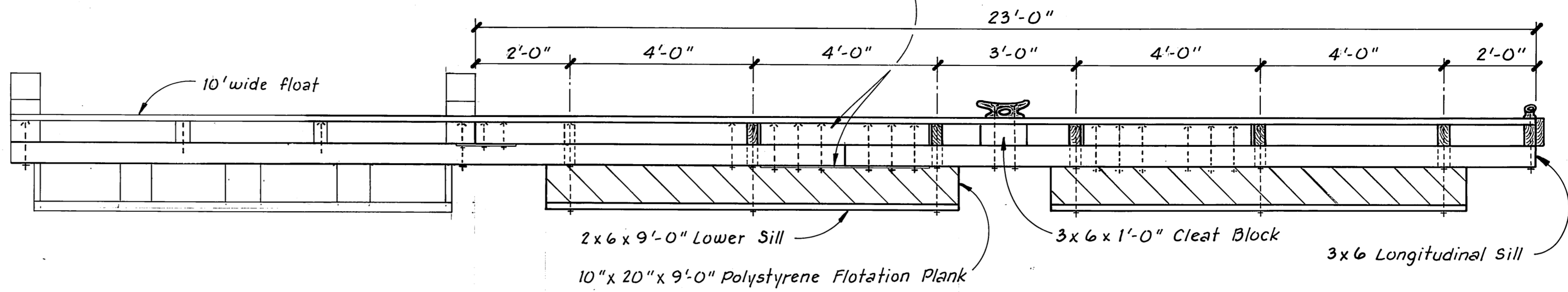
3/4" x 6" UHMW. 2 half hoops.
Heat and then mold it to shape.

NOTE: All welds on
inside of steel ring
shall be ground
smooth.

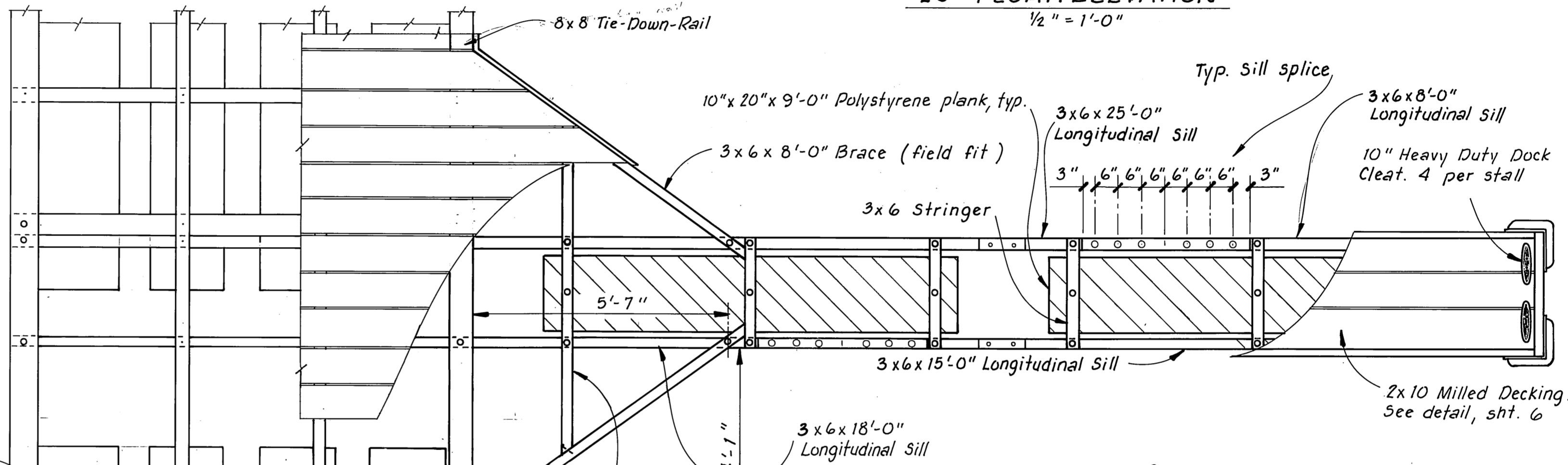


STEEL PIPE PILE COLLAR
1" = 1'-0"

Splice Sills w/ 3x6 x 3'-8" Splice Block
and 3/8" x 2 1/2" x 3'-6" steel plate
secured w/ 6 - 3/8" bolts as shown.
See plan view for bolt spacing.



23' FLOAT. ELEVATION
1/2" = 1'-0"



PLAN VIEW 2'-4 3/4" x 23' STALL FLOAT (77.9 S.F.)
1/2" = 1'-0"

2x10 milled decking. Space 1/2"
apart and secure to ea.
stringer w/ 20d box nails.
See milled decking det, sht.

10" x 20" x 9'-0"
Polystyrene plank

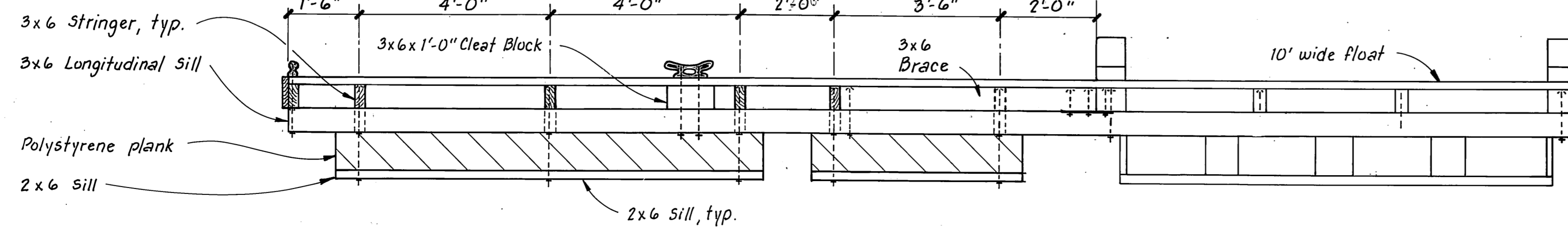
3x6 Stringer, typ.

8" Heavy Duty dock cleats,
4 per stall, typ.

Heavy Duty bumpers.
Secure w/ 14 no. 12 x 2"
flat head galv. wood
screws & 3/16" flat
washers, typ.

3x6 x 27'-0" Longitudinal Sill

PLAN VIEW 2'-4 3/4" x 17' STALL FLOAT
(61.7 S.F.) 1/2" = 1'-0"



17' FLOAT - ELEVATION
1/2" = 1'-0"

3/8" x 2 1/2" x 18" Steel Splice R.

3x6 x 7'-1" stringer (field fit)
Toenail to brace, 2-20d nails ea. end

3x6 x 6'-8 1/2" brace (field fit)

1/2 Polystyrene plank
(10" x 20" x 4'-6")

5'-1 3/4"

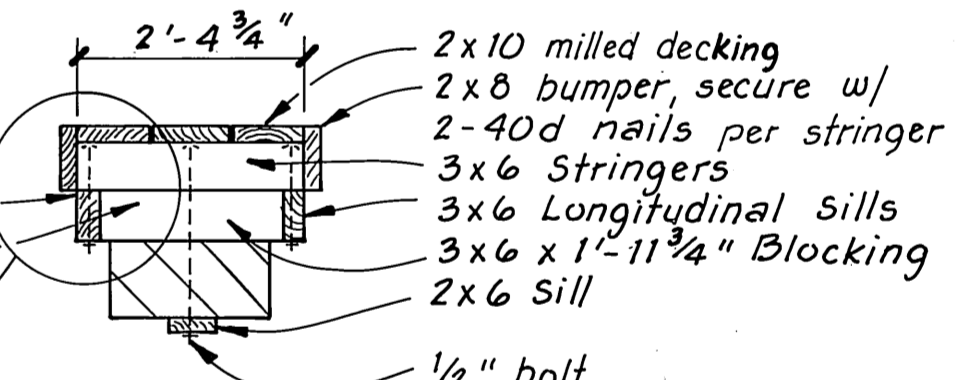
3x6 x 8'-0" Stringer
(field fit). Toenail to
brace, 2-20d nails, ea. end

3/8" x 2 1/2" x 18" Steel Splice
R. See 17' stall for bolt
spacing

Assemble stringer
& sill w/ outside
flush

Field trim blocking to fit if necessary

2-40d nails
per stringer



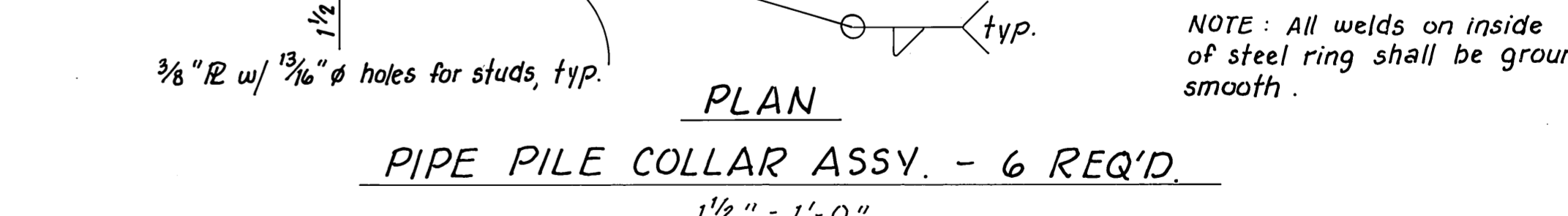
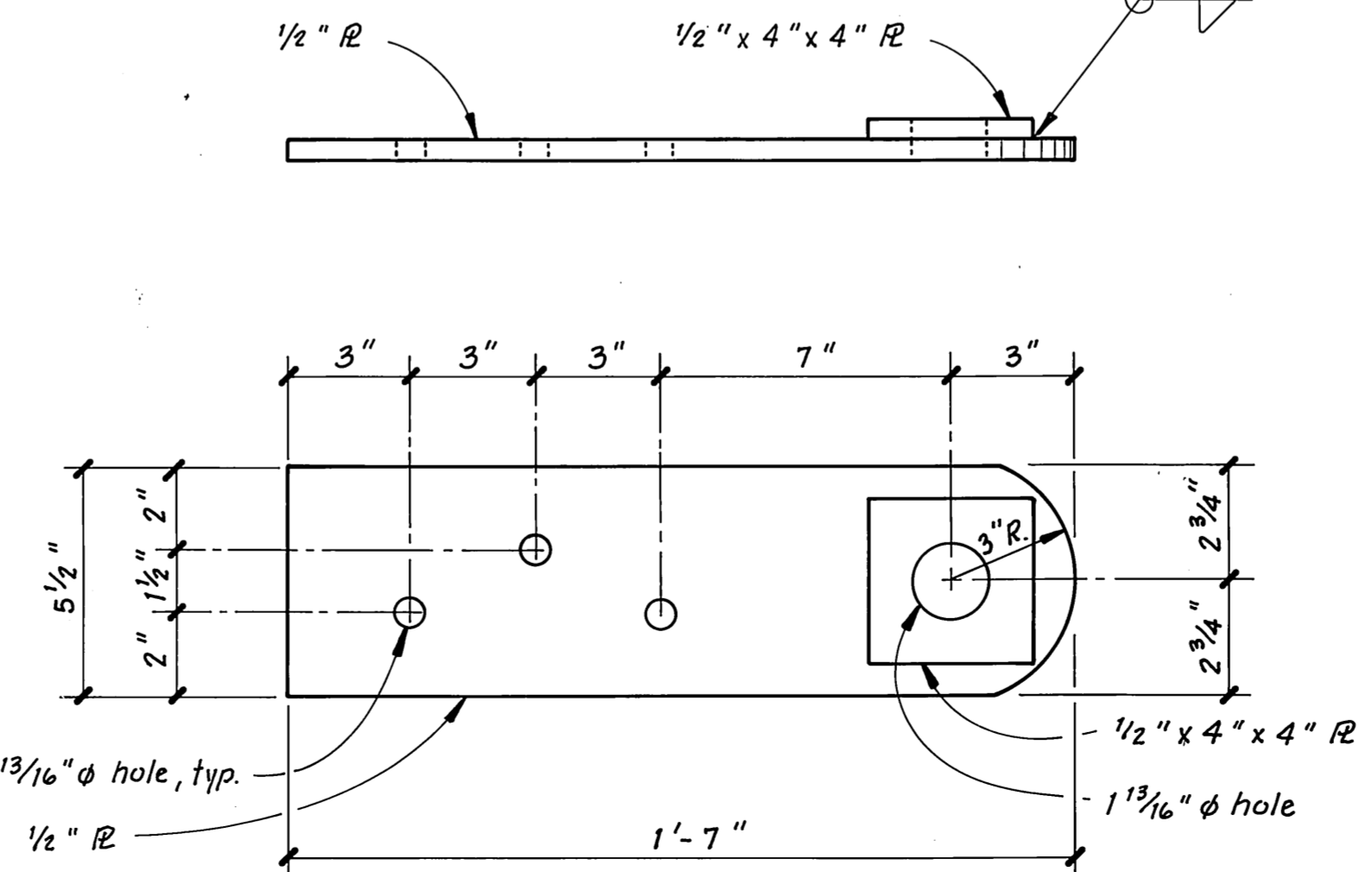
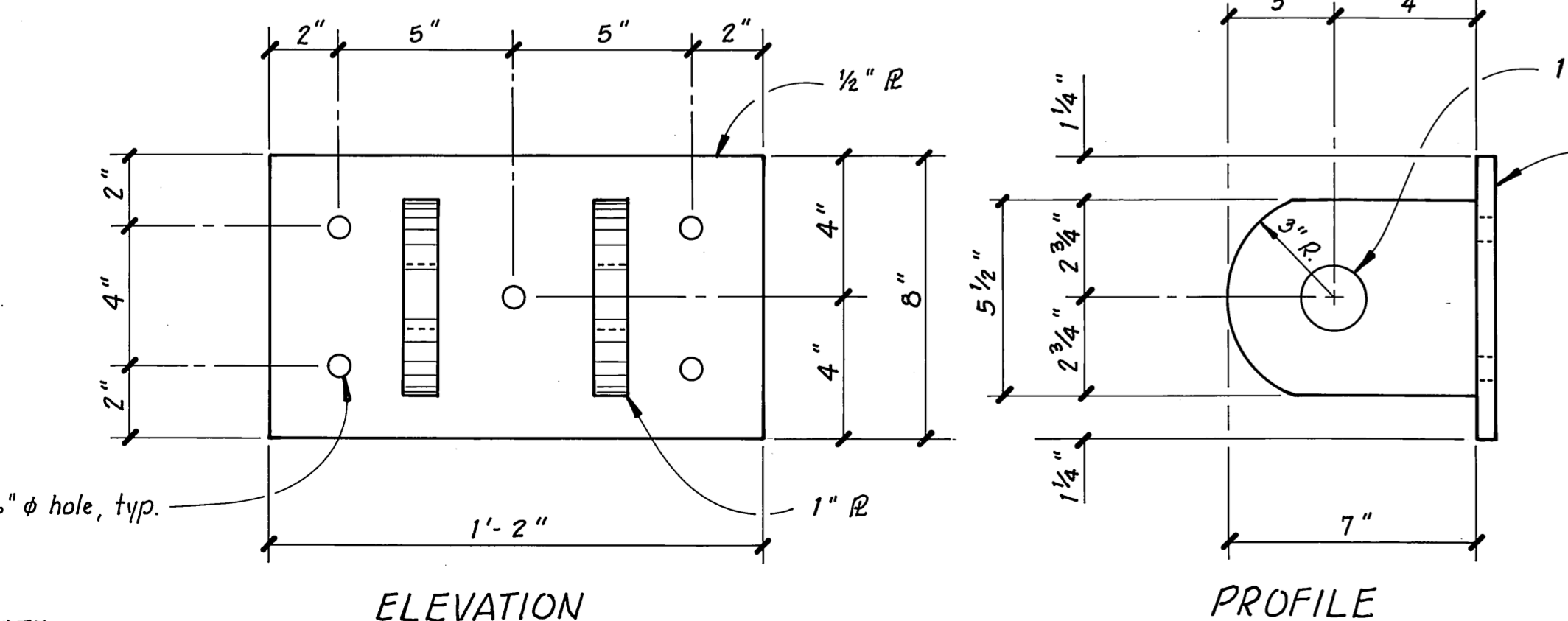
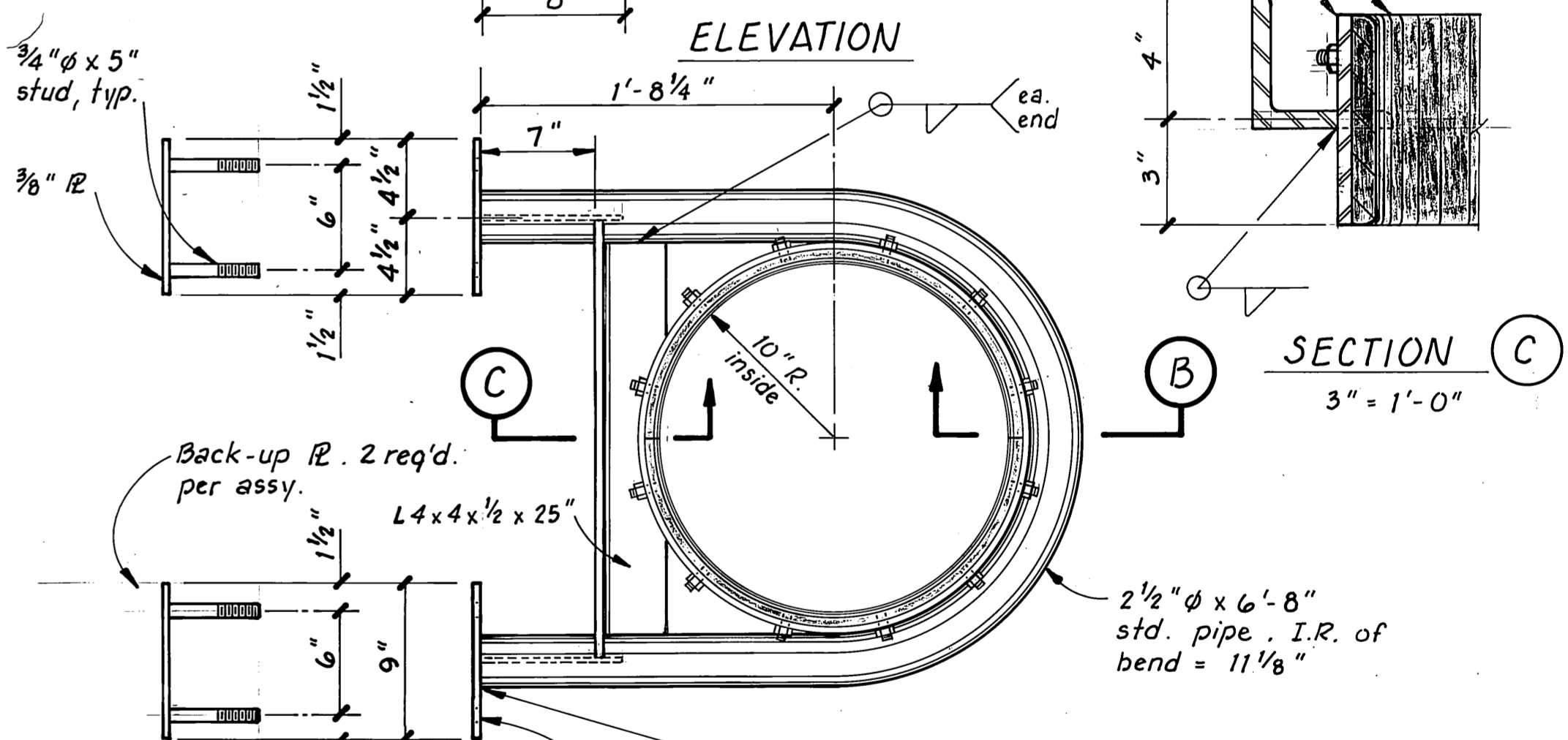
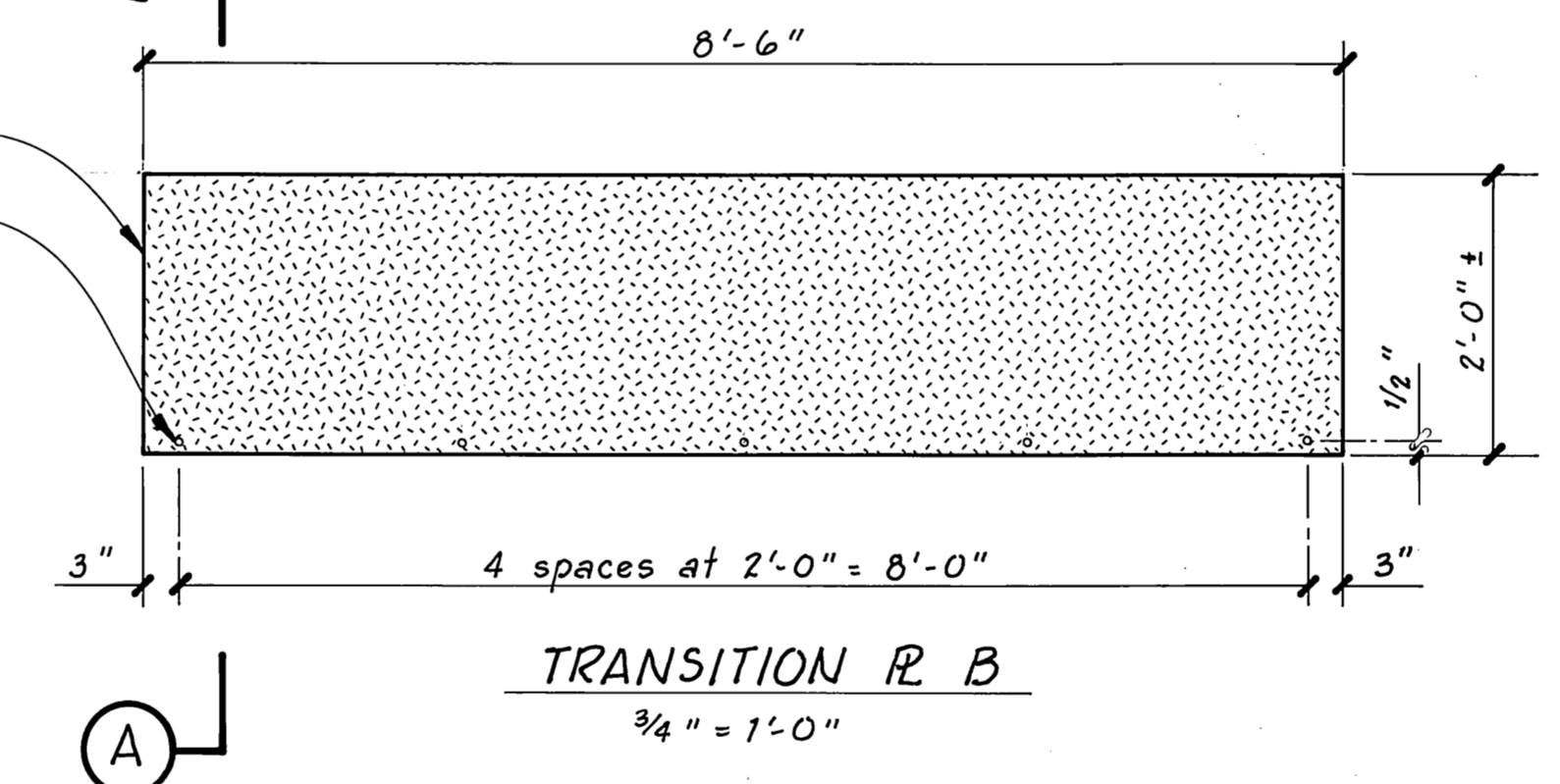
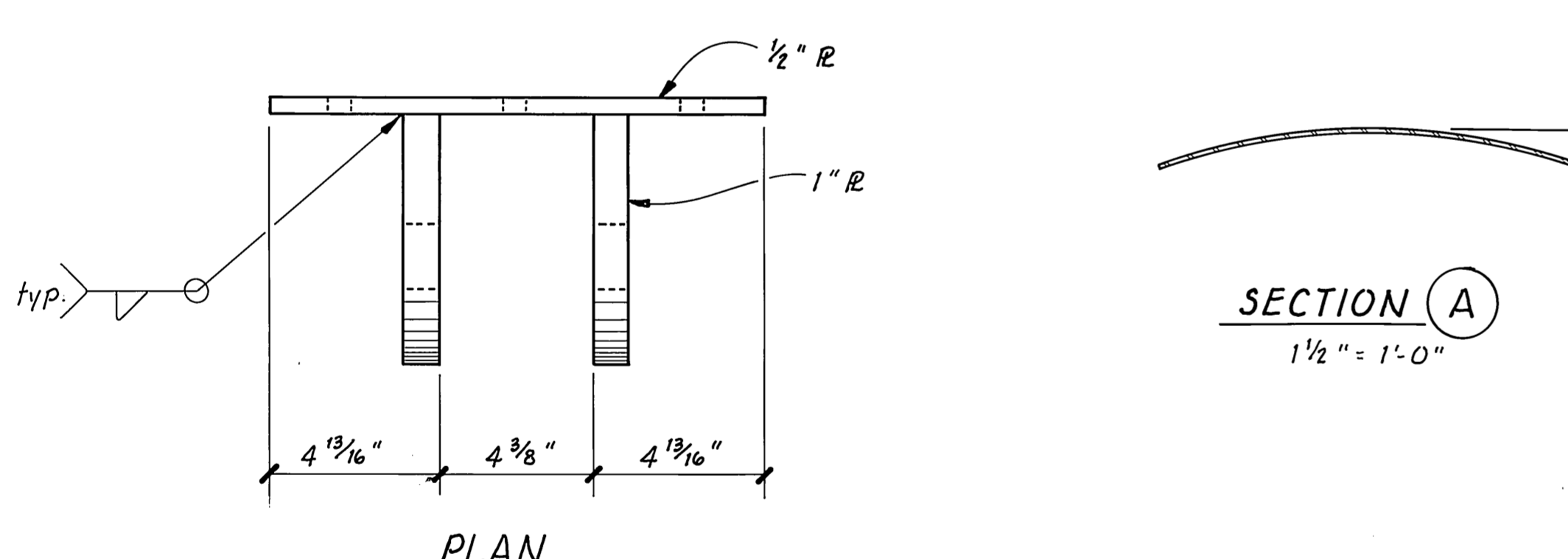
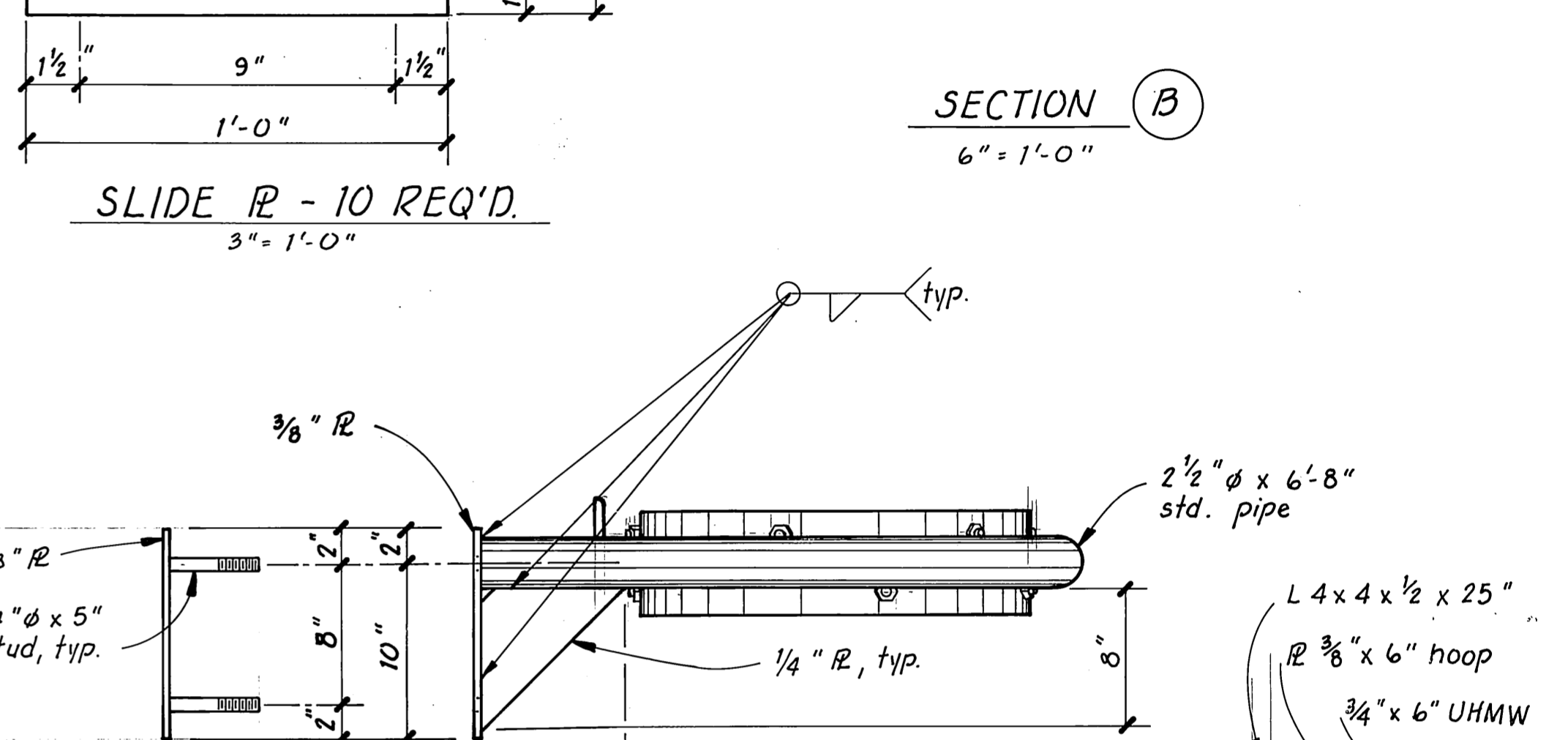
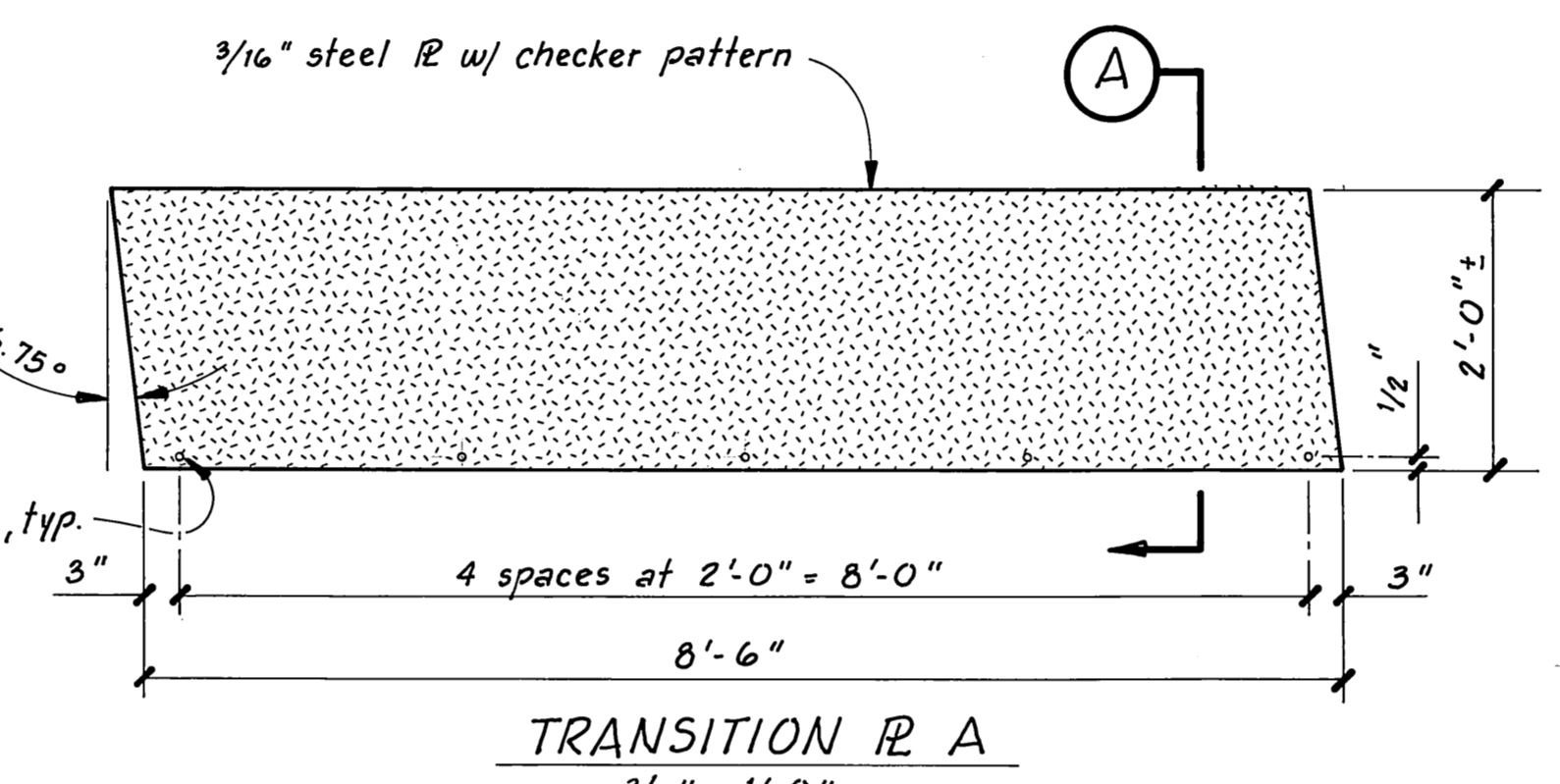
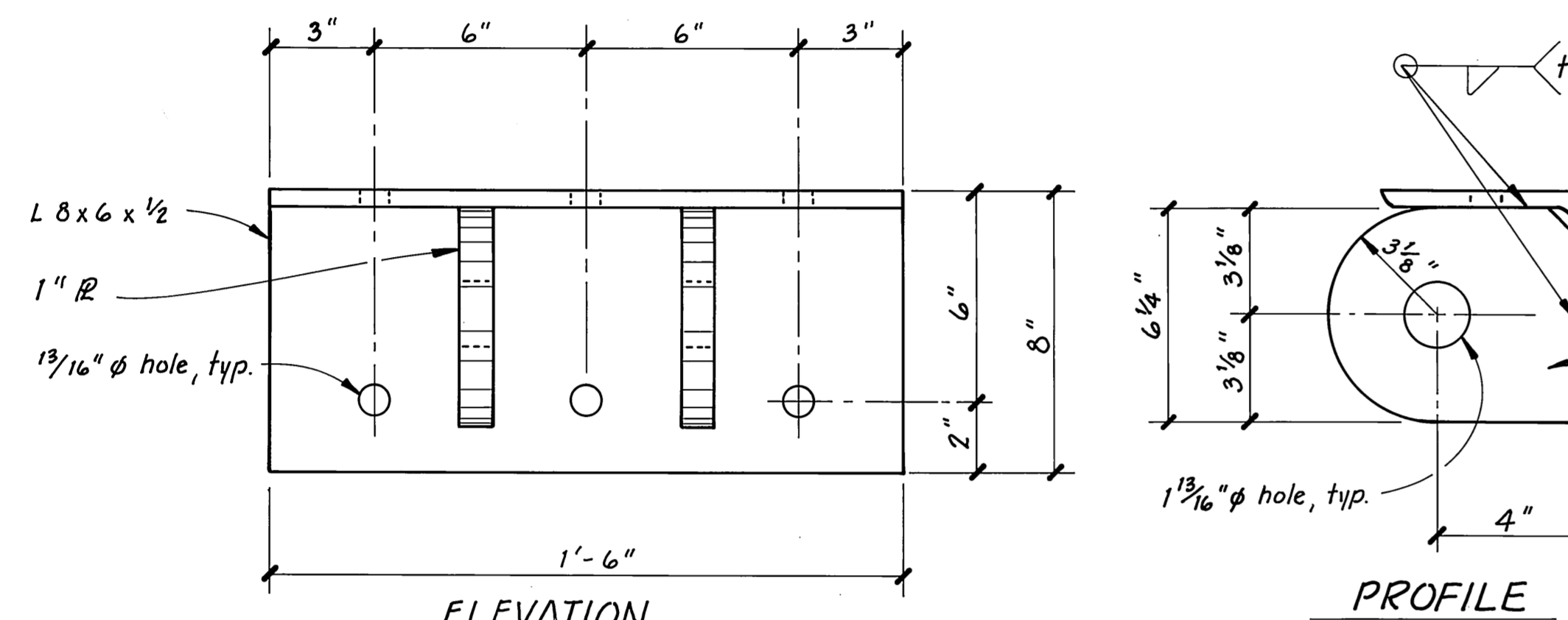
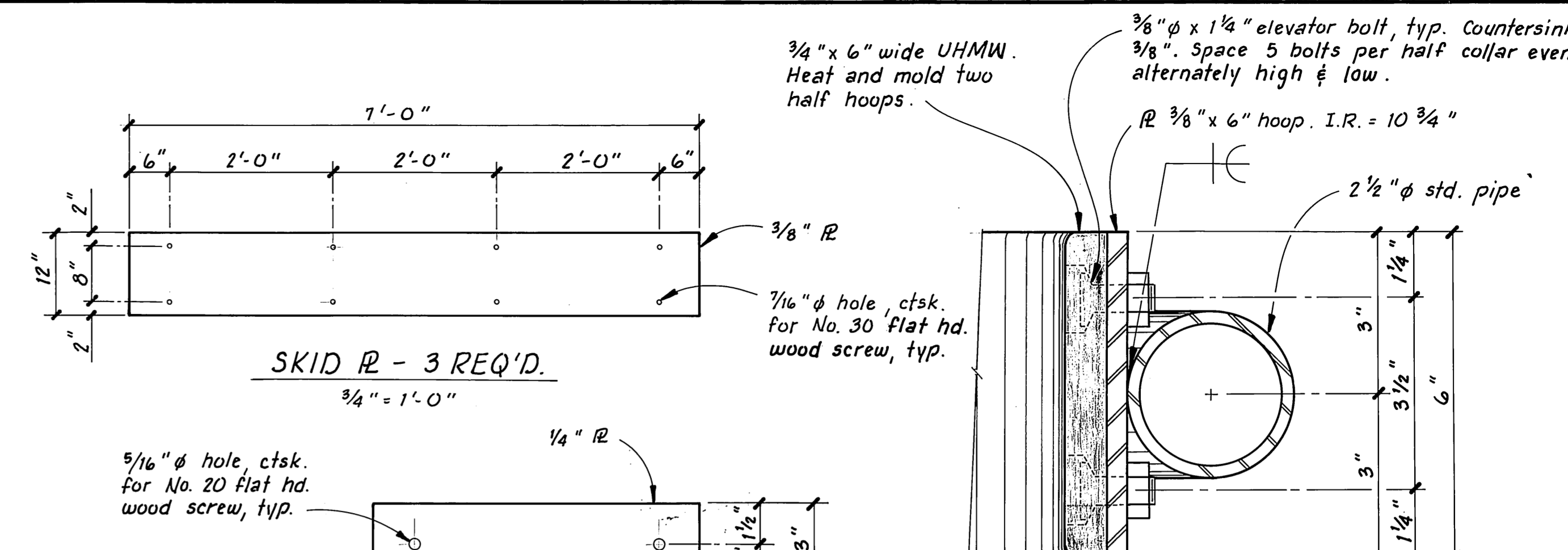
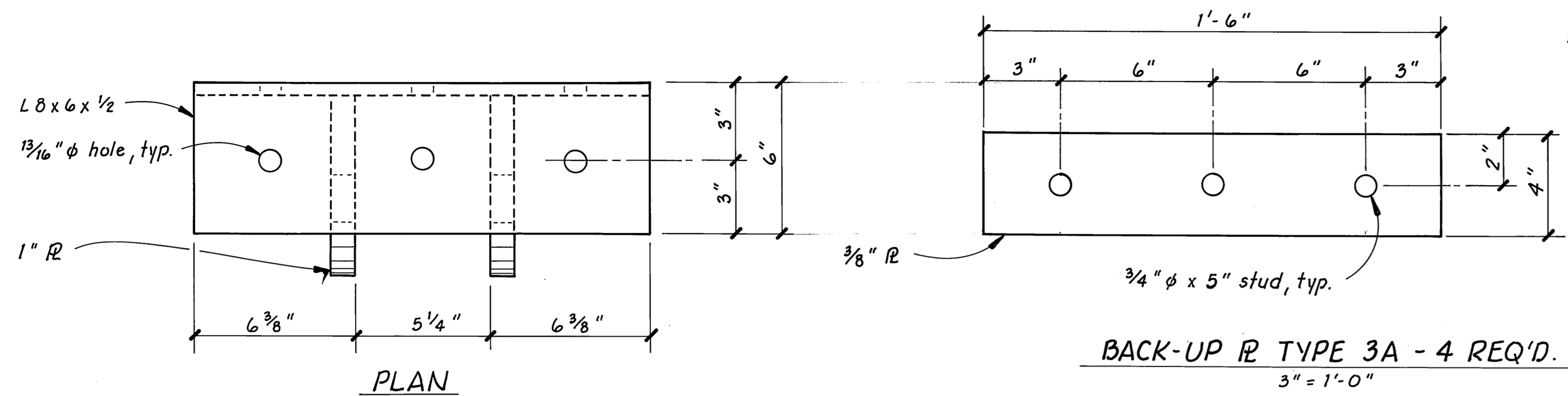
SECTIONAL VIEW
1/2" = 1'-0"
(TYPICAL OF 17' & 23' STALLS)

NOTES:

1. Space 2x10 milled decking 1/2" apart. Stagger splices in decking over stringers except second stringer out from main float.
2. Countersink all stringers w/ bolts in contact with decking.
3. All material S45 except decking (milled S152E).
4. All bolts called out shall include nuts. Provide washers as per specs. All connections are bolted using 5/8" econ. hd bolts w/ lugs unless noted otherwise.

STAMP		DO NOT SCALE THIS DRAWING - USE DIMENSIONS	
STATE OF ALASKA			
DEPARTMENT OF TRANSPORTATION AND PUBLIC FACILITIES			
Coffman Cove		Alaska	
17' & 23' STALL FLOAT DETAILS			
DESIGNED	RAM	CHECKED	
DRAWN	TS	DATE	3/85
PROJECT NUMBER	K-31031	SHEET	7 OF 8

As Constructed w/n 1/8/86



NOTE:
Back-up R Type 2A is similar to Hinge Weldment Type 2 except that there are 3/4" x 5" studs in place of the 1 3/16" holes and they have no 1" R's.

NOTE: All welds on inside of steel ring shall be ground smooth.

	DO NOT SCALE THIS DRAWING - USE DIMENSIONS		
	STATE OF ALASKA DEPARTMENT OF TRANSPORTATION AND PUBLIC FACILITIES		
	Coffman Cove Alaska		
	MISC. HARDWARE		
DESIGNED <u>RAM</u>	CHECKED _____	DRAWN <u>TS</u>	DATE <u>2-85</u>
PROJECT NUMBER <u>K-31031</u>	SHEET <u>8</u> OF <u>8</u>		